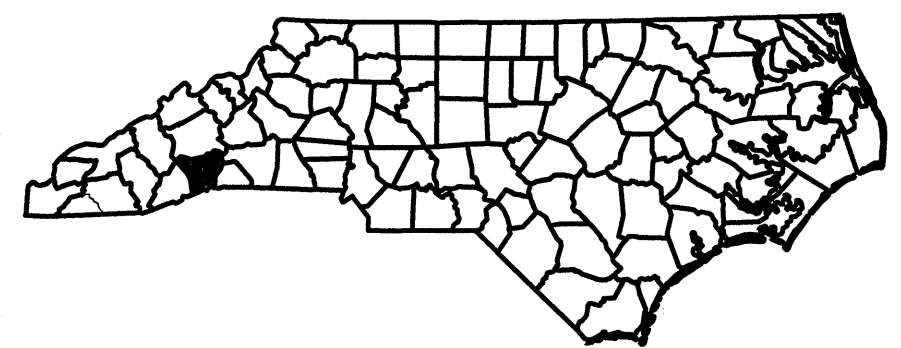
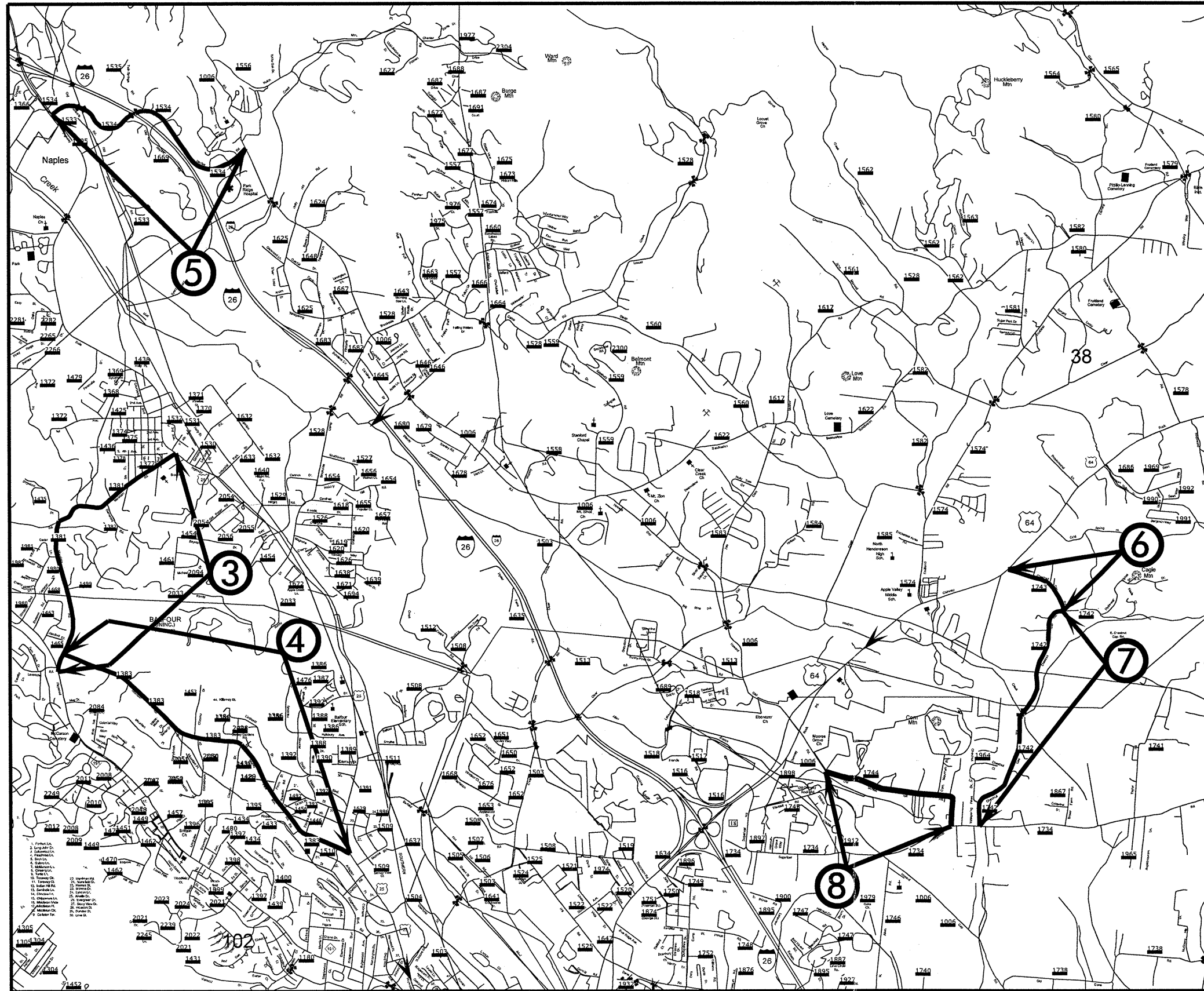


# HENDERSON COUNTY

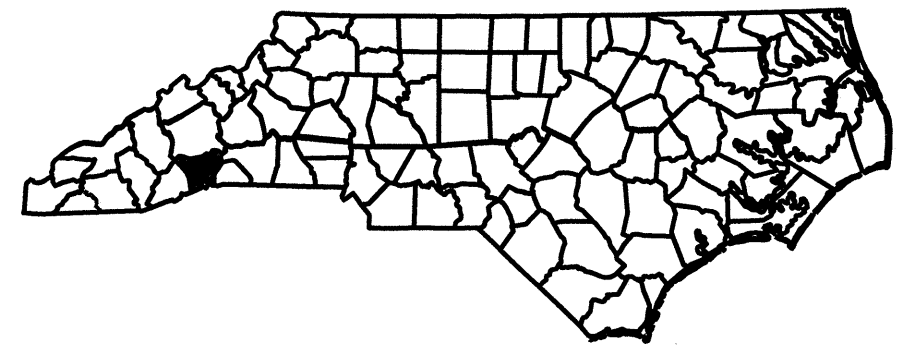
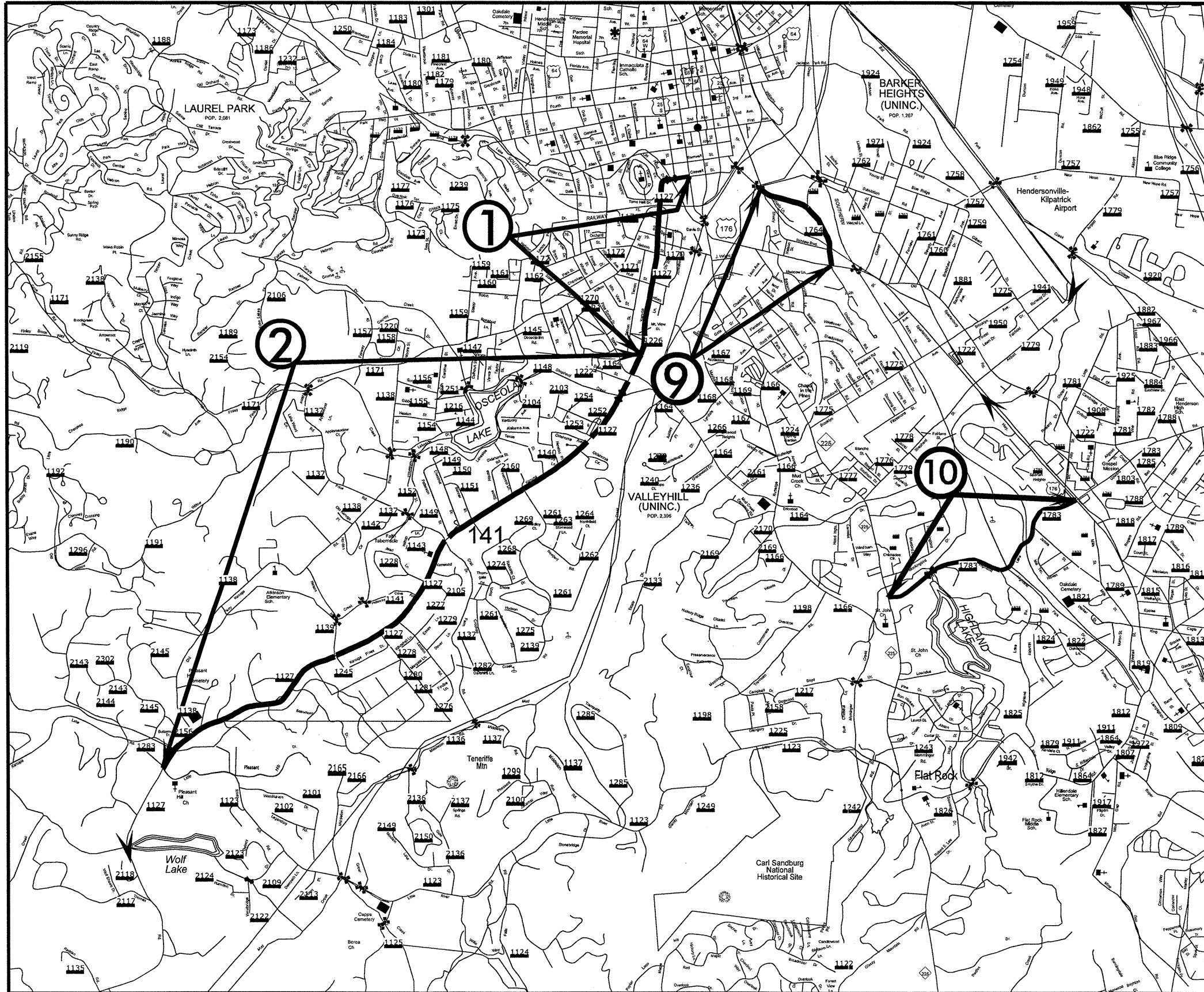
|                       |                  |             |
|-----------------------|------------------|-------------|
| PROJECT REFERENCE NO. |                  | SHEET NO.   |
| 14CR.20451.12         |                  | 1           |
| STATE PROJECT         | F.A. PROJECT NO. | DESCRIPTION |
| 14CR.20451.12         |                  |             |
|                       |                  |             |



050197

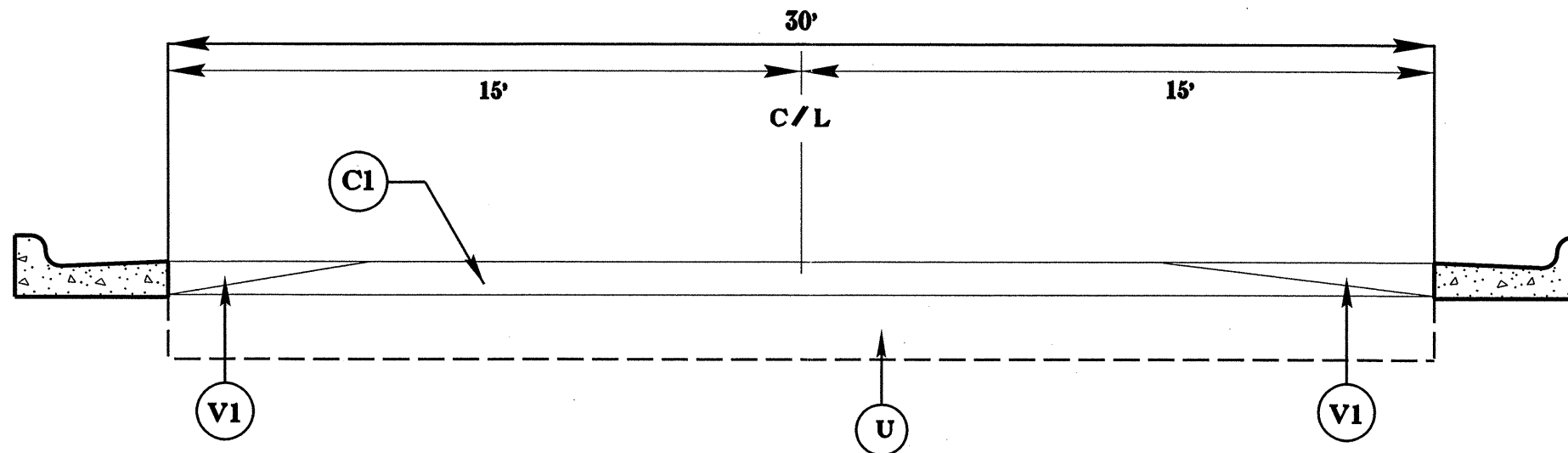
# HENDERSON COUNTY

|                       |                  |             |  |
|-----------------------|------------------|-------------|--|
| PROJECT REFERENCE NO. |                  | SHEET NO.   |  |
| 14CR.20451.12         |                  | 2           |  |
| STATE PROJECT         | F.A. PROJECT NO. | DESCRIPTION |  |
| 14CR.20451.12         |                  |             |  |



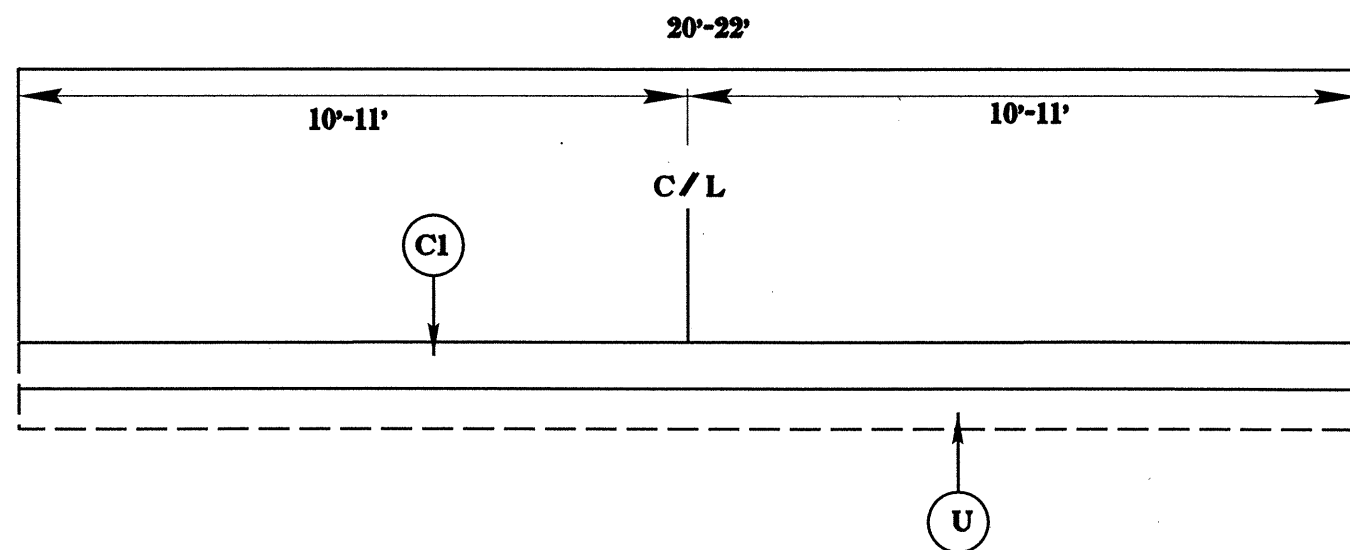
# TYPICAL 1

|                       |                  |             |
|-----------------------|------------------|-------------|
| PROJECT REFERENCE NO. |                  | SHEET NO.   |
| 14CR.20451.12         |                  | 3           |
| STATE PROJECT         | F.A. PROJECT NO. | DESCRIPTION |
| 14CR.20451.12         |                  |             |
|                       |                  |             |
|                       |                  |             |



NOTE: VARIABLE MILLING WIDTH AS DIRECTED BY PROJECT ENGINEER

# TYPICAL 2



## SURFACING SCHEDULE

| ITEM NO | DESCRIPTION                                                                                                 |
|---------|-------------------------------------------------------------------------------------------------------------|
| C1      | ASPHALT CONCRETE SURFACE COURSE, TYPE S9.5B, AT AN AVERAGE RATE OF 168 LBS. PER SQ. YD (1 1/2").            |
| D1      | ASPHALT CONCRETE INTERMEDIATE COURSE, TYPE I19.0B, AT AN AVERAGE RATE OF 342 LBS. PER SQ. YD (3").          |
| V1      | MILLING ASPHALT PAVEMENT 0" TO 2" IN DEPTH AS DIRECTED BY PROJECT ENGINEER - SEE PROJECT SPECIAL PROVISIONS |
| V2      | MILLING ASPHALT PAVEMENT 3" IN DEPTH AS DIRECTED BY PROJECT ENGINEER - SEE PROJECT SPECIAL PROVISIONS       |
| U       | EXISTING PAVEMENT                                                                                           |

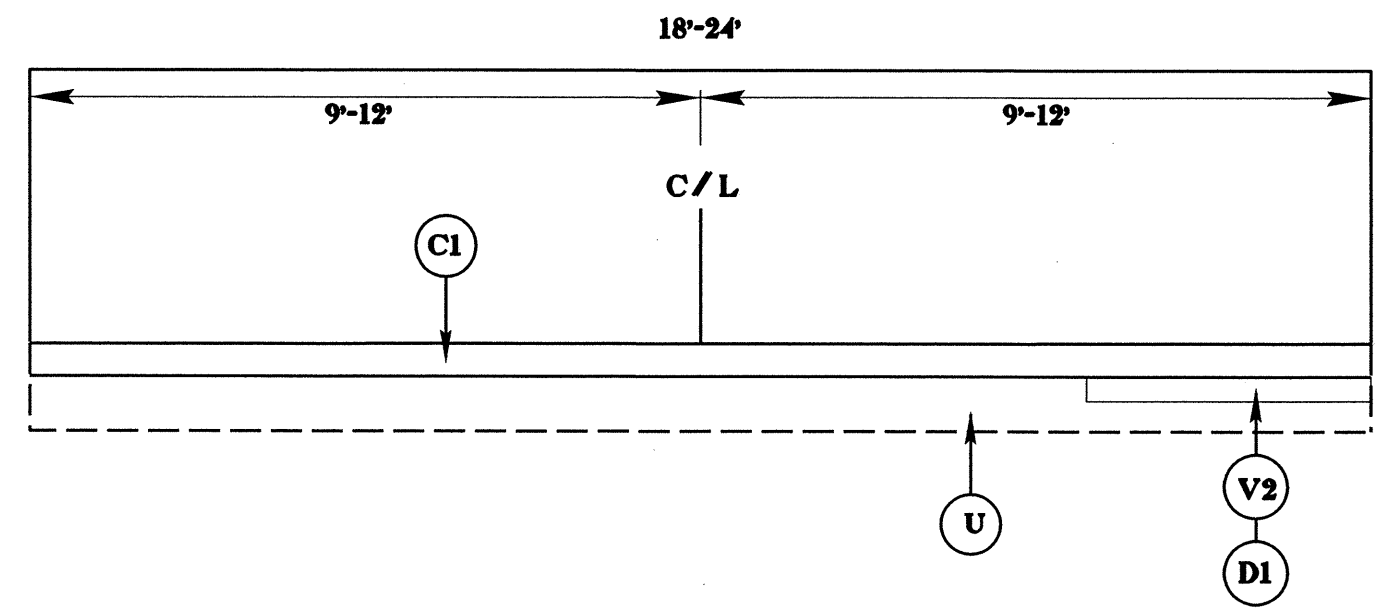
050187

|                       |                  |             |
|-----------------------|------------------|-------------|
| PROJECT REFERENCE NO. |                  | SHEET NO.   |
| 14CR.20451.12         |                  | 4           |
| STATE PROJECT         | F.A. PROJECT NO. | DESCRIPTION |
| 14CR.20451.12         |                  |             |
|                       |                  |             |
|                       |                  |             |

### SURFACING SCHEDULE

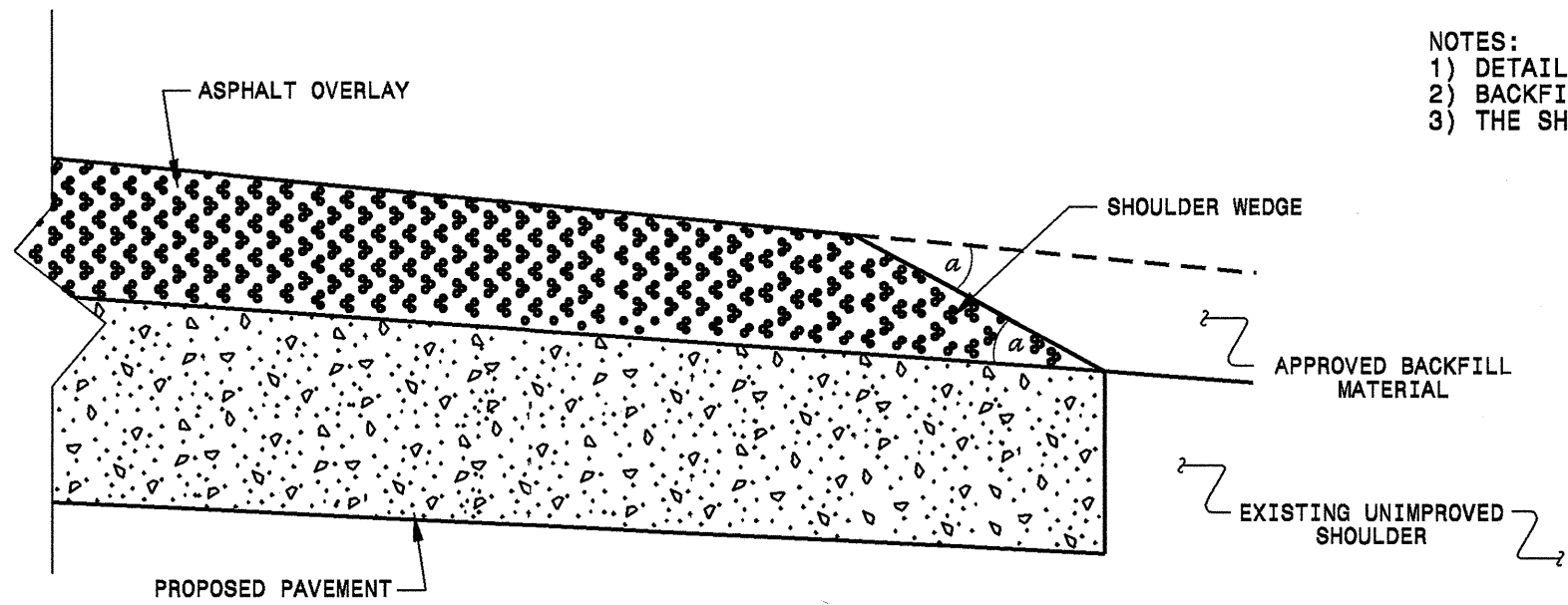
| ITEM NO | DESCRIPTION                                                                                                 |
|---------|-------------------------------------------------------------------------------------------------------------|
| C1      | ASPHALT CONCRETE SURFACE COURSE, TYPE S9.5B, AT AN AVERAGE RATE OF 168 LBS. PER SQ. YD (1 1/2").            |
| D1      | ASPHALT CONCRETE INTERMEDIATE COURSE, TYPE I19.0B, AT AN AVERAGE RATE OF 342 LBS. PER SQ. YD (3").          |
| V1      | MILLING ASPHALT PAVEMENT 0" TO 2" IN DEPTH AS DIRECTED BY PROJECT ENGINEER - SEE PROJECT SPECIAL PROVISIONS |
| V2      | MILLING ASPHALT PAVEMENT 3" IN DEPTH AS DIRECTED BY PROJECT ENGINEER - SEE PROJECT SPECIAL PROVISIONS       |
| U       | EXISTING PAVEMENT                                                                                           |

## TYPICAL 3

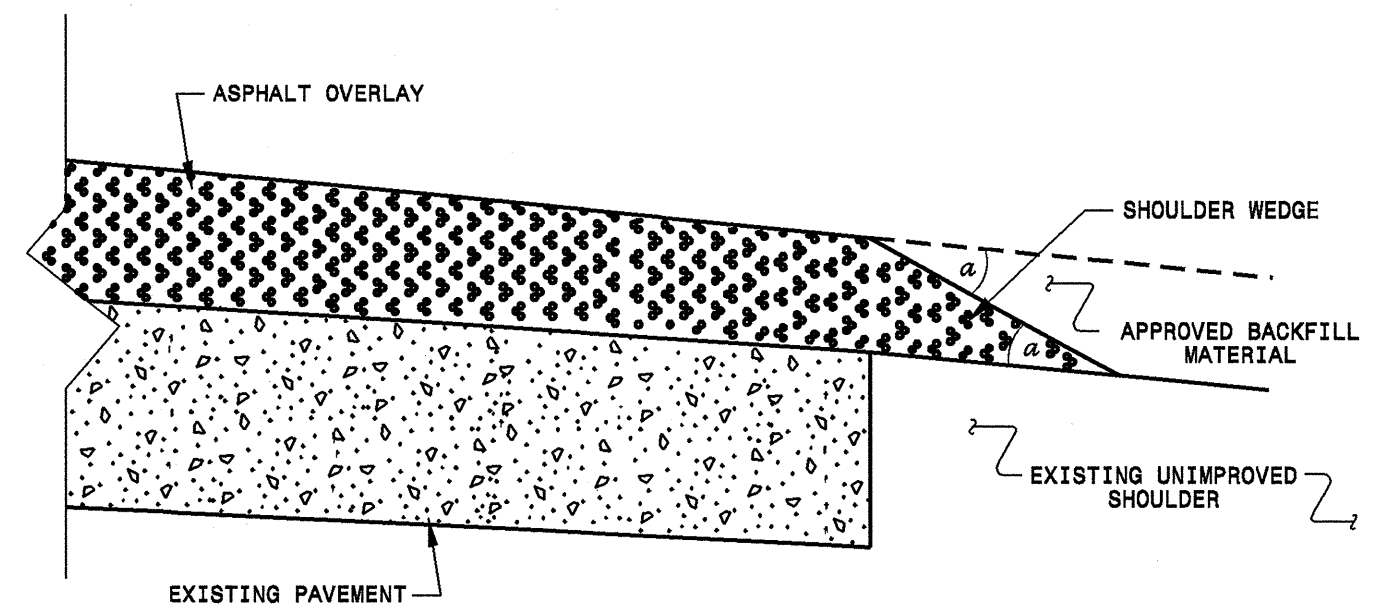




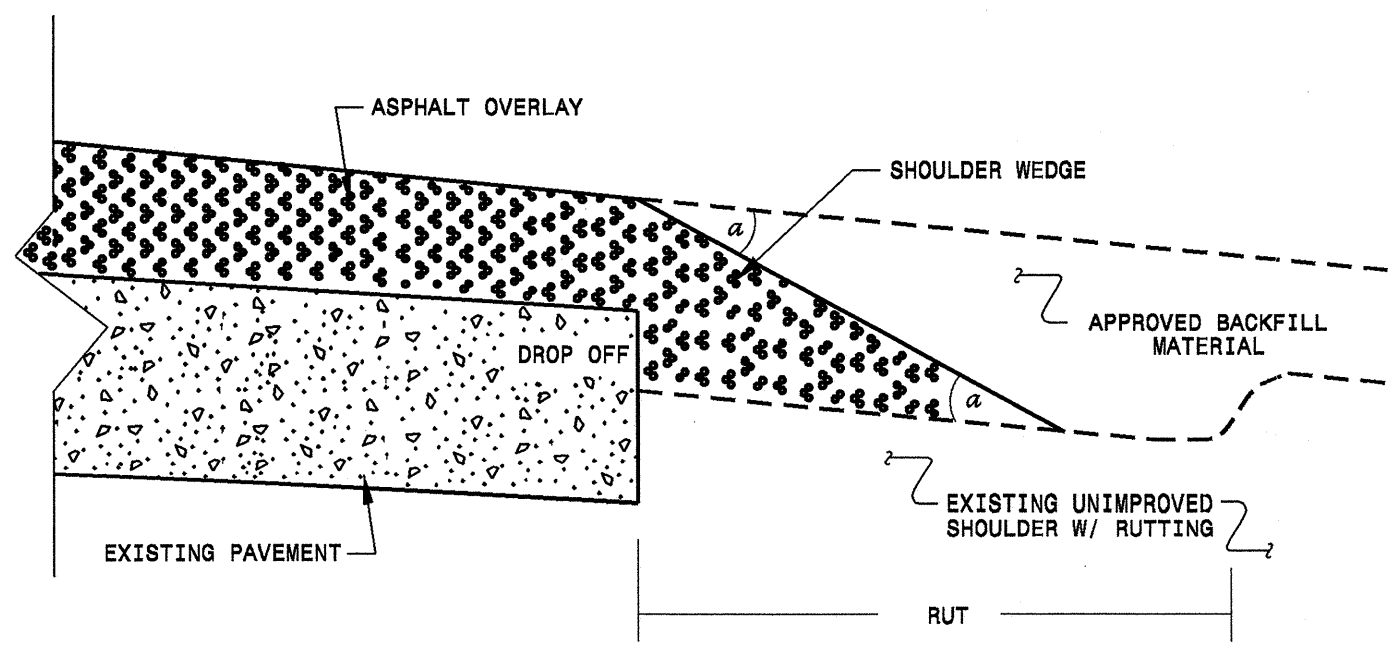
- NOTES:
- 1) DETAIL DOES NOT APPLY TO OGAFB AND ULTRA-THIN BONDED WEARING COURSE.
  - 2) BACKFILL SHOULDER WITH APPROVED MATERIAL.
  - 3) THE SHOULDER WEDGE DEVICE MAY BE DISENGAGED AT PAVED DRIVEWAYS AND SIDE STREETS.



**SHOULDER WEDGE DETAIL**  
 (Resurfacing Projects w/ Widening or  
 with Existing Paved Shoulder having no dropoffs)



**SHOULDER WEDGE DETAIL**  
 (Resurfacing Projects w/ NO Widening)



**SHOULDER WEDGE DETAIL**  
 (Resurfacing Adjacent to  
 Rutted Shoulder)

- SHOULDER WEDGE ANGLE = 30°

|                                                    |                                             |                  |          |
|----------------------------------------------------|---------------------------------------------|------------------|----------|
| <b>CONTRACT STANDARDS<br/>AND DEVELOPMENT UNIT</b> |                                             |                  |          |
| Office 919-707-6950                                |                                             | FAX 919-250-4119 |          |
| <b>SHOULDER WEDGE<br/>DETAILS</b>                  |                                             |                  |          |
| ORIGINAL BY:                                       | T. SPELL                                    | DATE:            | 7-19-11  |
| MODIFIED BY:                                       |                                             | DATE:            | 10/18/12 |
| CHECKED BY:                                        |                                             | DATE:            |          |
| FILE SPEC.:                                        | s:\uac\details\stand\shouderwedgedetail.dgn |                  |          |

CR:\MAR-2012\10456\Documents\Revised Shoulder Wedge Detail.dgn  
 \$\$\$USERNAME\$\$\$

|               |           |           |
|---------------|-----------|-----------|
| PROJECT NO.   | SHEET NO. | TOTAL NO. |
| 14CR.20451.12 | 6         | 6         |

### SUMMARY OF QUANTITIES

| PROJECT NO                              | COUNTY    | MAP NO | ROUTE                | DESCRIPTION                      | TYP | FINAL SURFACE TESTING REQUIRED | WARM MIX ASPHALT REQUIRED | LENGTH MI    | WIDTH FT | 3" MILLING SY | 0" TO 2" MILLING SY | INCIDENTAL MILLING SY | INTERMEDIATE COURSE, I19.0B TONS | SURFACE COURSE, S9.5B TONS | ASPHALT BINDER FOR PLANT MIX TONS | ADJ. OF MANHOLES EA | ADJ. OF METER OR VALVE BOX EA | INDUCTIVE LOOP LF |
|-----------------------------------------|-----------|--------|----------------------|----------------------------------|-----|--------------------------------|---------------------------|--------------|----------|---------------|---------------------|-----------------------|----------------------------------|----------------------------|-----------------------------------|---------------------|-------------------------------|-------------------|
| 14CR.20451.12                           | Henderson | 1      | SR-1127 CURB SECTION | FROM US 25 TO STA 46+00          | 1   | NO                             | NO                        | 0.87         | 30       |               | 7,500               | 100                   |                                  | 1,408                      | 84                                | 20                  | 6                             | 482               |
| <b>TOTAL FOR MAP NO. 1</b>              |           |        |                      |                                  |     |                                |                           | <b>0.87</b>  |          |               | <b>7,500</b>        | <b>100</b>            |                                  | <b>1,408</b>               | <b>84</b>                         | <b>20</b>           | <b>6</b>                      | <b>482</b>        |
| 14CR.20451.12                           | Henderson | 2      | SR-1127              | FROM STA.46+00 TO SR-1323        | 3   | NO                             | NO                        | 3.04         | 22       | 4,700         |                     | 100                   | 850                              | 3,646                      | 260                               |                     | 18                            | 582               |
| <b>TOTAL FOR MAP NO. 2</b>              |           |        |                      |                                  |     |                                |                           | <b>3.04</b>  |          | <b>4,700</b>  |                     | <b>100</b>            | <b>850</b>                       | <b>3,646</b>               | <b>260</b>                        |                     | <b>18</b>                     | <b>582</b>        |
| 14CR.20451.12                           | Henderson | 3      | SR-1381              | FROM US 25 TO NC 191             | 2   | NO                             | NO                        | 1.62         | 20       |               |                     |                       |                                  | 1,719                      | 103                               |                     | 1                             | 582               |
| <b>TOTAL FOR MAP NO. 3</b>              |           |        |                      |                                  |     |                                |                           | <b>1.62</b>  |          |               |                     |                       | <b>1,719</b>                     | <b>103</b>                 |                                   | <b>1</b>            | <b>582</b>                    |                   |
| 14CR.20451.12                           | Henderson | 4      | SR-1383              | FROM US 25 TO SR-1381            | 3   | NO                             | NO                        | 1.98         | 24       | 7,000         |                     |                       | 1,320                            | 2,542                      | 216                               | 1                   | 3                             |                   |
| <b>TOTAL FOR MAP NO. 4</b>              |           |        |                      |                                  |     |                                |                           | <b>1.98</b>  |          | <b>7,000</b>  |                     |                       | <b>1,320</b>                     | <b>2,542</b>               | <b>216</b>                        | <b>1</b>            | <b>3</b>                      |                   |
| 14CR.20451.12                           | Henderson | 5      | SR-1534              | FROM US 25 TO SR-1006            | 3   | NO                             | NO                        | 1.33         | 22       | 4,700         |                     |                       | 886                              | 1,566                      | 136                               |                     |                               |                   |
| <b>TOTAL FOR MAP NO. 5</b>              |           |        |                      |                                  |     |                                |                           | <b>1.33</b>  |          | <b>4,700</b>  |                     |                       | <b>886</b>                       | <b>1,566</b>               | <b>136</b>                        |                     |                               |                   |
| 14CR.20451.12                           | Henderson | 6      | SR-1742              | FROM US 64 TO SR-1742            | 2   | NO                             | NO                        | 0.4          | 20       |               |                     |                       |                                  | 428                        | 26                                |                     |                               |                   |
| <b>TOTAL FOR MAP NO. 6</b>              |           |        |                      |                                  |     |                                |                           | <b>0.4</b>   |          |               |                     |                       | <b>428</b>                       | <b>26</b>                  |                                   |                     |                               |                   |
| 14CR.20451.12                           | Henderson | 7      | SR-1743              | FROM SR-1743 TO SR-1734          | 2   | NO                             | NO                        | 0.9          | 20       |               |                     |                       |                                  | 964                        | 58                                |                     |                               |                   |
| <b>TOTAL FOR MAP NO. 7</b>              |           |        |                      |                                  |     |                                |                           | <b>0.9</b>   |          |               |                     |                       | <b>964</b>                       | <b>58</b>                  |                                   |                     |                               |                   |
| 14CR.20451.12                           | Henderson | 8      | SR-1744              | FROM SR-1006 TO SR-1734          | 3   | NO                             | NO                        | 0.86         | 18       | 2,500         |                     |                       | 471                              | 830                        | 72                                |                     |                               |                   |
| <b>TOTAL FOR MAP NO. 8</b>              |           |        |                      |                                  |     |                                |                           | <b>0.86</b>  |          | <b>2,500</b>  |                     |                       | <b>471</b>                       | <b>830</b>                 | <b>72</b>                         |                     |                               |                   |
| 14CR.20451.12                           | Henderson | 9      | SR-1764              | FROM US 176 TO BEG. CURB SECTION | 2   | NO                             | NO                        | 0.4          | 20       |               |                     |                       |                                  | 428                        | 26                                |                     |                               |                   |
| <b>TOTAL FOR MAP NO. 9</b>              |           |        |                      |                                  |     |                                |                           | <b>0.4</b>   |          |               |                     |                       | <b>428</b>                       | <b>26</b>                  |                                   |                     |                               |                   |
| 14CR.20451.12                           | Henderson | 10     | SR-1783              | FROM NC 225 TO US 176            | 2   | NO                             | NO                        | 1.12         | 20       |               |                     |                       |                                  | 1,200                      | 72                                |                     |                               |                   |
| <b>TOTAL FOR MAP NO. 10</b>             |           |        |                      |                                  |     |                                |                           | <b>1.12</b>  |          |               |                     |                       | <b>1,200</b>                     | <b>72</b>                  |                                   |                     |                               |                   |
| <b>TOTAL FOR PROJ NO. 14CR.20451.12</b> |           |        |                      |                                  |     |                                |                           | <b>12.52</b> |          | <b>18,900</b> | <b>7,500</b>        | <b>200</b>            | <b>3,527</b>                     | <b>14,731</b>              | <b>1,053</b>                      | <b>21</b>           | <b>28</b>                     | <b>1,064</b>      |
| <b>GRAND TOTAL</b>                      |           |        |                      |                                  |     |                                |                           | <b>12.52</b> |          | <b>18,900</b> | <b>7,500</b>        | <b>200</b>            | <b>3,527</b>                     | <b>14,731</b>              | <b>1,053</b>                      | <b>21</b>           | <b>28</b>                     | <b>1,064</b>      |

### THERMOPLASTIC AND PAINT QUANTITIES

| PROJECT NO                              | COUNTY    | MAP NO | ROUTE                | DESCRIPTION                      | TYP | LENGTH | WIDTH | 4399000000-N                 | 4810000000-E      | 4820000000-E       | 4830000000-E       | 4835000000-E       | 4840000000-N       | 4845000000-N     | 4905000000-N      |                          |            |
|-----------------------------------------|-----------|--------|----------------------|----------------------------------|-----|--------|-------|------------------------------|-------------------|--------------------|--------------------|--------------------|--------------------|------------------|-------------------|--------------------------|------------|
|                                         |           |        |                      |                                  |     |        |       | TEMPORARY TRAFFIC CONTROL LS | 4" WHITE PAINT LF | 4" YELLOW PAINT LF | 8" YELLOW PAINT LF | 16" WHITE PAINT LF | 24" WHITE PAINT LF | PAINT MSG RXR EA | PAINT LT ARROW EA | SNOW PLOWABLE MARKERS EA |            |
| 14CR.20451.12                           | Henderson | 1      | SR-1127 CURB SECTION | FROM US 25 TO STA 46+00          | 1   | 0.87   | 30    | 1                            | 1,000             | 19,000             | 110                | 200                | 600                | 8                | 40                | 58                       |            |
| <b>TOTAL FOR MAP NO. 1</b>              |           |        |                      |                                  |     |        |       | <b>1</b>                     | <b>1,000</b>      | <b>19,000</b>      | <b>110</b>         | <b>200</b>         | <b>600</b>         | <b>8</b>         | <b>40</b>         | <b>58</b>                |            |
| 14CR.20451.12                           | Henderson | 2      | SR-1127              | FROM STA.46+00 TO SR-1323        | 3   | 3.04   | 22    |                              | 65,421            | 65,000             |                    |                    | 240                |                  |                   | 202                      |            |
| <b>TOTAL FOR MAP NO. 2</b>              |           |        |                      |                                  |     |        |       |                              | <b>65,421</b>     | <b>65,000</b>      |                    |                    | <b>240</b>         |                  | <b>202</b>        |                          |            |
| 14CR.20451.12                           | Henderson | 3      | SR-1381              | FROM US 25 TO NC 191             | 2   | 1.62   | 20    |                              | 34,862            | 34,862             |                    |                    | 40                 |                  |                   | 113                      |            |
| <b>TOTAL FOR MAP NO. 3</b>              |           |        |                      |                                  |     |        |       |                              | <b>34,862</b>     | <b>34,862</b>      |                    |                    | <b>40</b>          |                  | <b>113</b>        |                          |            |
| 14CR.20451.12                           | Henderson | 4      | SR-1383              | FROM US 25 TO SR-1381            | 3   | 1.98   | 24    |                              | 42,610            | 42,610             |                    |                    | 48                 |                  |                   | 139                      |            |
| <b>TOTAL FOR MAP NO. 4</b>              |           |        |                      |                                  |     |        |       |                              | <b>42,610</b>     | <b>42,610</b>      |                    |                    | <b>48</b>          |                  | <b>139</b>        |                          |            |
| 14CR.20451.12                           | Henderson | 5      | SR-1534              | FROM US 25 TO SR-1006            | 3   | 1.33   | 22    |                              | 28,622            | 28,662             |                    |                    | 44                 |                  |                   | 93                       |            |
| <b>TOTAL FOR MAP NO. 5</b>              |           |        |                      |                                  |     |        |       |                              | <b>28,622</b>     | <b>28,662</b>      |                    |                    | <b>44</b>          |                  | <b>93</b>         |                          |            |
| 14CR.20451.12                           | Henderson | 6      | SR-1742              | FROM US 64 TO SR-1742            | 2   | 0.4    | 20    |                              | 8,608             | 8,608              |                    |                    | 20                 |                  |                   |                          |            |
| <b>TOTAL FOR MAP NO. 6</b>              |           |        |                      |                                  |     |        |       |                              | <b>8,608</b>      | <b>8,608</b>       |                    |                    | <b>20</b>          |                  |                   |                          |            |
| 14CR.20451.12                           | Henderson | 7      | SR-1743              | FROM SR-1743 TO SR-1734          | 2   | 0.9    | 20    |                              | 19,368            | 19,368             |                    |                    | 20                 |                  |                   |                          |            |
| <b>TOTAL FOR MAP NO. 7</b>              |           |        |                      |                                  |     |        |       |                              | <b>19,368</b>     | <b>19,368</b>      |                    |                    | <b>20</b>          |                  |                   |                          |            |
| 14CR.20451.12                           | Henderson | 8      | SR-1744              | FROM SR-1006 TO SR-1734          | 3   | 0.86   | 18    |                              | 18,507            | 18,705             |                    |                    | 36                 |                  |                   |                          |            |
| <b>TOTAL FOR MAP NO. 8</b>              |           |        |                      |                                  |     |        |       |                              | <b>18,507</b>     | <b>18,705</b>      |                    |                    | <b>36</b>          |                  |                   |                          |            |
| 14CR.20451.12                           | Henderson | 9      | SR-1764              | FROM US 176 TO BEG. CURB SECTION | 2   | 0.4    | 20    |                              | 8,608             | 8,608              |                    |                    |                    |                  |                   |                          |            |
| <b>TOTAL FOR MAP NO. 9</b>              |           |        |                      |                                  |     |        |       |                              | <b>8,608</b>      | <b>8,608</b>       |                    |                    |                    |                  |                   |                          |            |
| 14CR.20451.12                           | Henderson | 10     | SR-1783              | FROM NC 225 TO US 176            | 2   | 1.12   | 20    |                              | 24,102            | 24,102             |                    | 200                | 140                | 8                |                   |                          |            |
| <b>TOTAL FOR MAP NO. 10</b>             |           |        |                      |                                  |     |        |       |                              | <b>24,102</b>     | <b>24,102</b>      |                    | <b>200</b>         | <b>140</b>         | <b>8</b>         |                   |                          |            |
| <b>TOTAL FOR PROJ NO. 14CR.20451.12</b> |           |        |                      |                                  |     |        |       | <b>12.52</b>                 | <b>1</b>          | <b>251,708</b>     | <b>269,525</b>     | <b>110</b>         | <b>400</b>         | <b>1,188</b>     | <b>16</b>         | <b>40</b>                | <b>605</b> |
| <b>GRAND TOTAL</b>                      |           |        |                      |                                  |     |        |       | <b>12.52</b>                 | <b>1</b>          | <b>251,708</b>     | <b>269,525</b>     | <b>110</b>         | <b>400</b>         | <b>1,188</b>     | <b>16</b>         | <b>40</b>                | <b>605</b> |