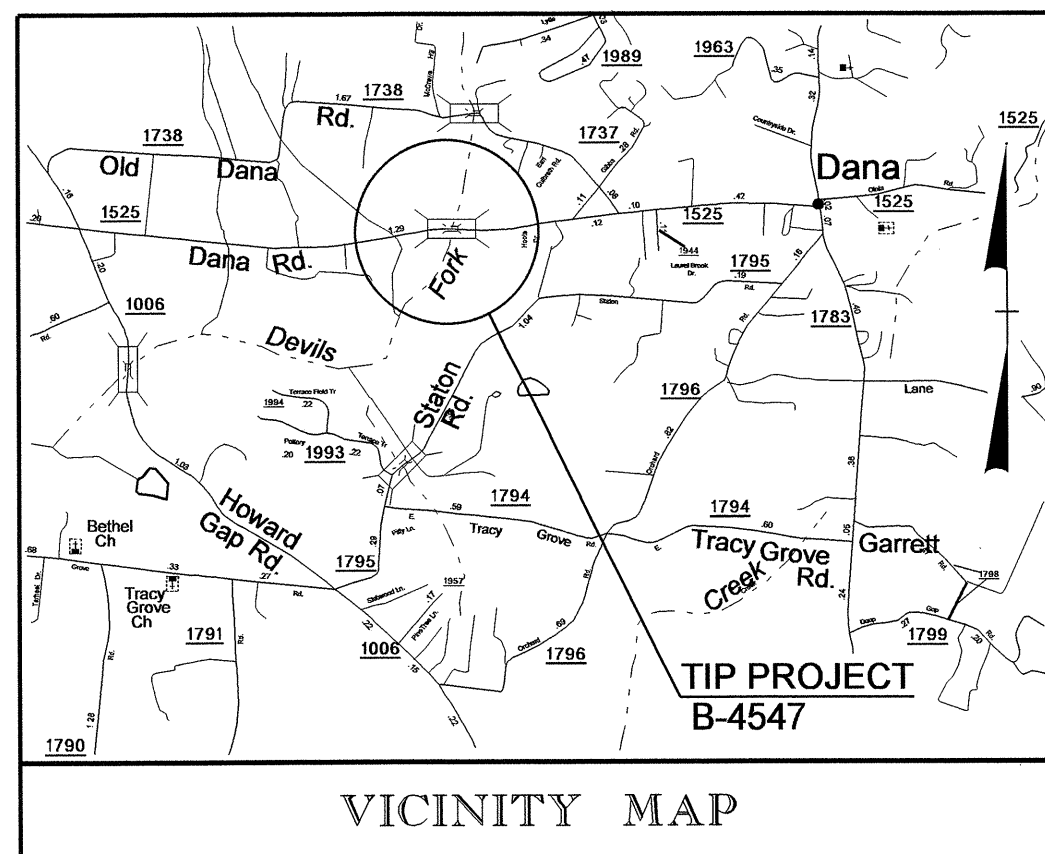


See Sheet 1-A For Index of Sheets

T.I.P. NO.	SHEET NO.
B-4547	UO-1



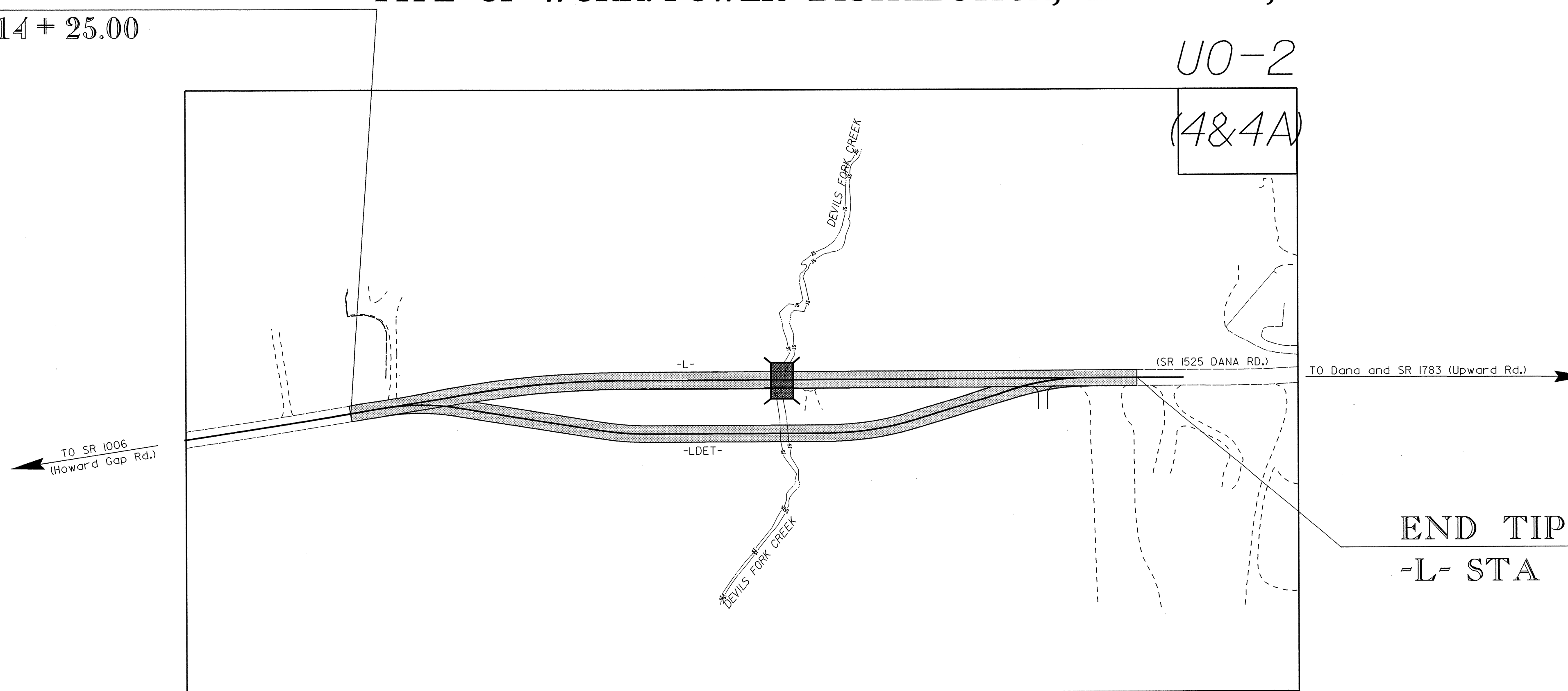
VICINITY MAP

STATE OF NORTH CAROLINA
DIVISION OF HIGHWAYS

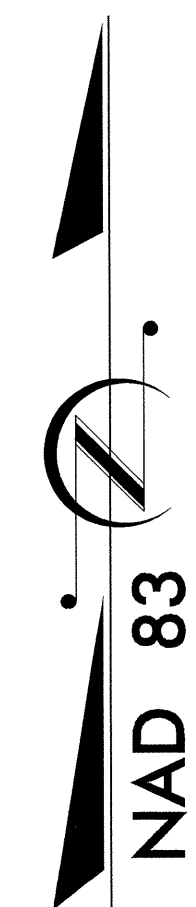
**UTILITIES BY OTHERS PLANS
HENDERSON COUNTY**

**LOCATION: BRIDGE NO. 45 OVER DEVILS FORK CREEK
ON SR 1525 (DANA RD.)**

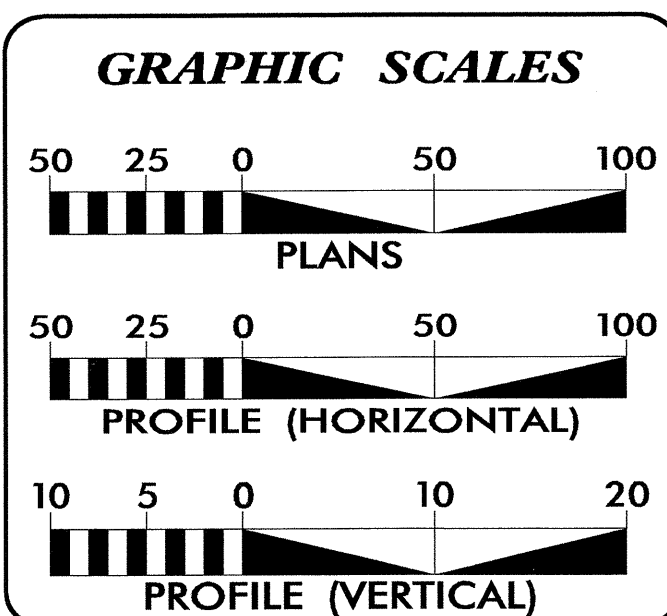
BEGIN TIP PROJECT B-4547 **TYPE OF WORK: POWER DISTRIBUTION, TELEPHONE, CATV**
-L- STA 14+25.00



END TIP PROJECT B-4547
-L- STA 25+25.00



TIP PROJECT: B-4547



INDEX OF SHEETS	
SHEET NO.	DESCRIPTION
UO-1	TITLE SHEET
UO-2	UTILITIES BY OTHERS PLAN SHEET

UTILITY OWNERS ON PROJECT	
(1)	Power Distribution - Duke Energy
(2)	Telephone - AT&T
(3)	CATV - Morris Broadband

PREPARED IN THE OFFICE OF:
**DIVISION OF HIGHWAYS
UTILITIES UNIT
UTILITIES ENGINEERING**

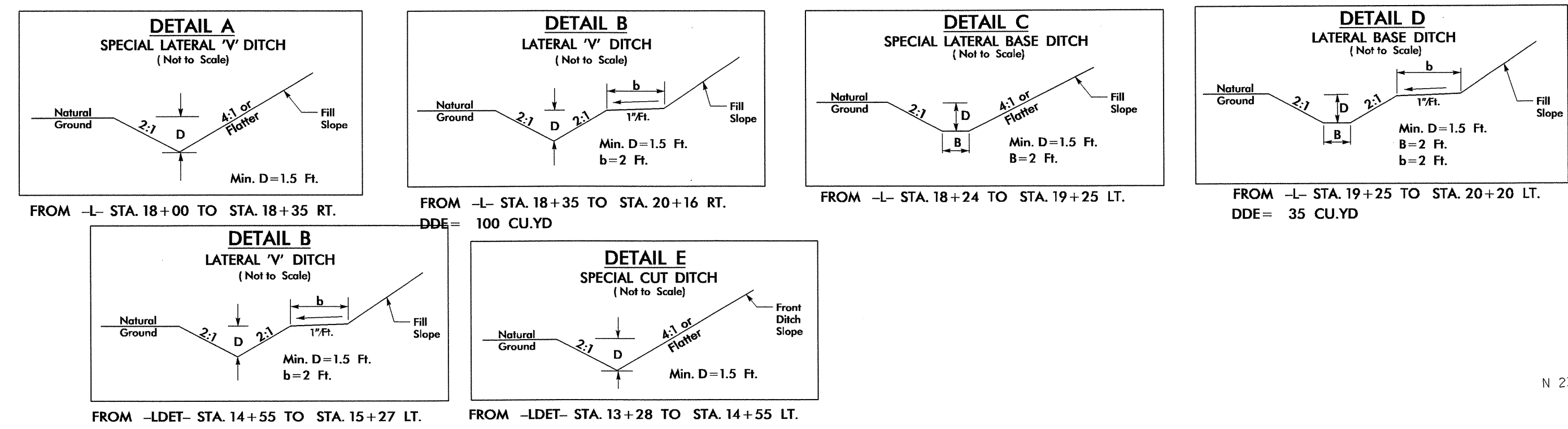
1591 MAIL SERVICES CENTER
RALEIGH, NC 27699-1591
PHONE (919) 707-6690
FAX (919) 250-4151

Roger Worthington, P.E.	UTILITIES SECTION ENGINEER
Carl Barclay, P.E.	UTILITIES SQUAD LEADER PROJECT ENGINEER
Bo Hemphill, P.E.	UTILITIES PROJECT DESIGNER

05-FEB-2013 12:35
R:\Utilities\RDY\UT\Proj\B4547_ut_title_uol.psh.dgn
\$\$\$\$\$USERNAME\$\$\$\$\$

UTILITIES BY OTHERS

NOTE:
 ALL PROPOSED UTILITY WORK
 SHOWN ON THIS SHEET WILL
 BE DONE BY OTHERS

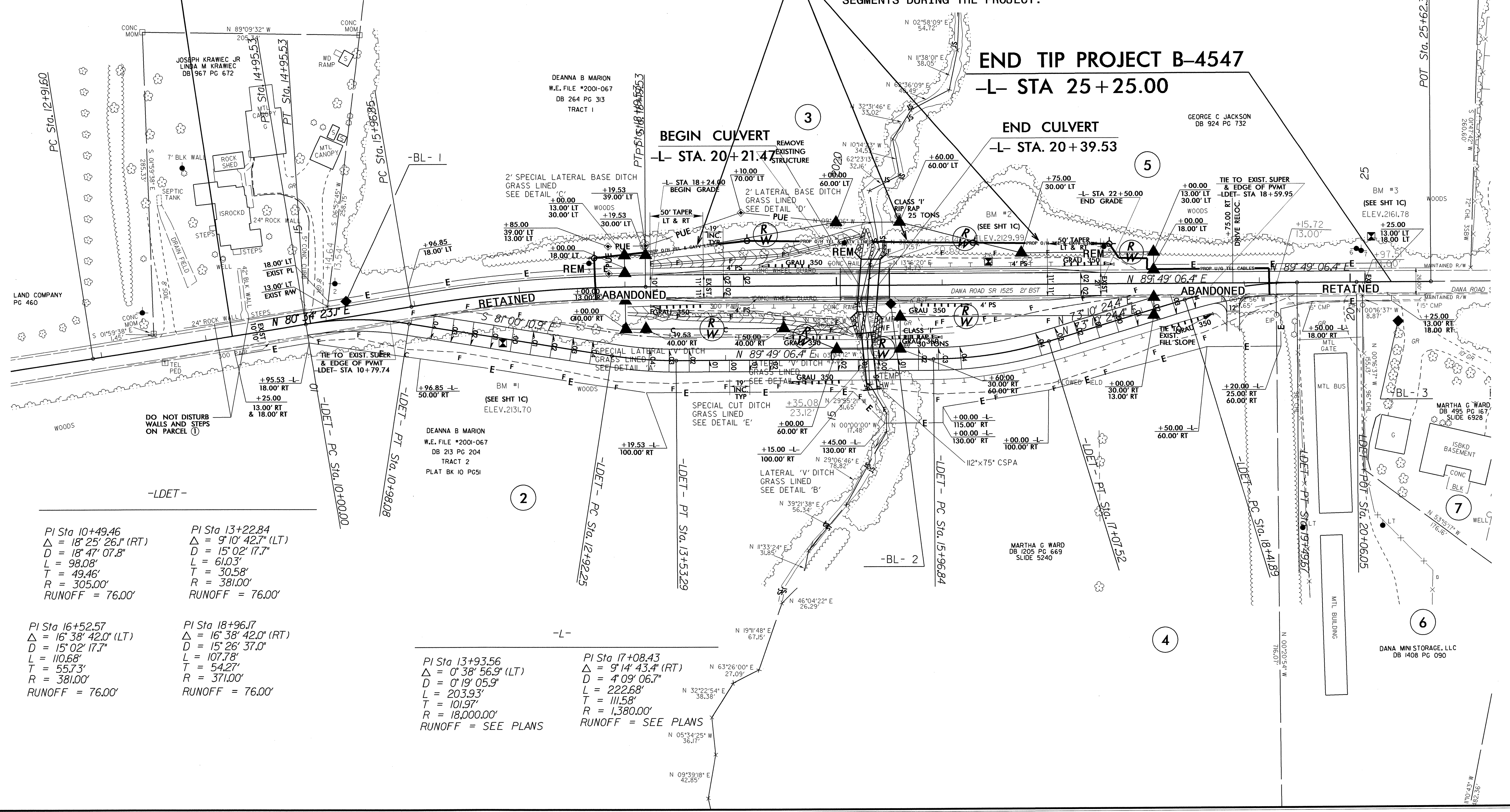


BEGIN TIP PROJECT B-4547
-L- STA 14+25.00

END TIP PROJECT B-4547
-L- STA 25+25.00

BEGIN CULVERT
-L- STA 20+21.47

END CULVERT
-L- STA 20+39.53



PI Sta 10+49.46
 $\Delta = 18^{\circ} 25' 26.1''$ (RT)
 $D = 18^{\circ} 47' 07.8''$
 $L = 98.08'$
 $T = 49.46'$
 $R = 305.00'$
 RUNOFF = 76.00'

PI Sta 13+22.84
 $\Delta = 9^{\circ} 10' 42.7''$ (LT)
 $D = 15^{\circ} 02' 17.7''$
 $L = 61.03'$
 $T = 30.58'$
 $R = 381.00'$
 RUNOFF = 76.00'

PI Sta 13+93.56
 $\Delta = 0^{\circ} 38' 56.9''$ (LT)
 $D = 0^{\circ} 19' 05.9''$
 $L = 203.93'$
 $T = 101.97'$
 $R = 18,000.00'$
 RUNOFF = SEE PLANS

PI Sta 17+08.43
 $\Delta = 9^{\circ} 14' 43.4''$ (RT)
 $D = 4^{\circ} 09' 06.7''$
 $L = 222.68'$
 $T = 111.58'$
 $R = 1,380.00'$
 RUNOFF = SEE PLANS

POWER LINES WILL BE CONSTRUCTED ON THESE SEGMENTS AFTER COMPLETION OF THE PROJECT. THERE WILL BE NO POWER LINES ON THESE SEGMENTS DURING THE PROJECT.

05-FEB-2013 13:10 R:\Utilities\Bldg\Projects\B4547\ut_4_uo2_psh.dgn
 5/14/99