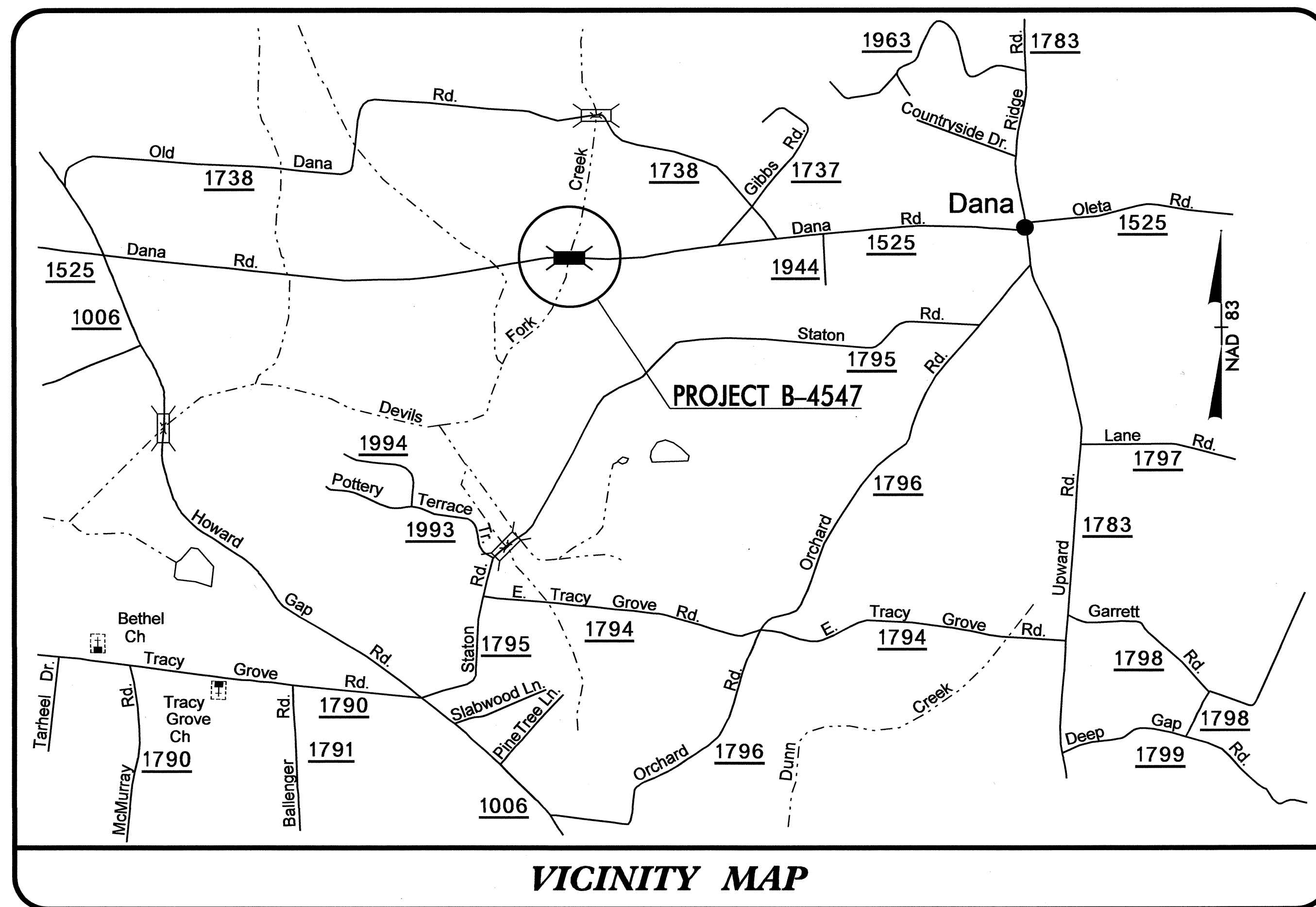
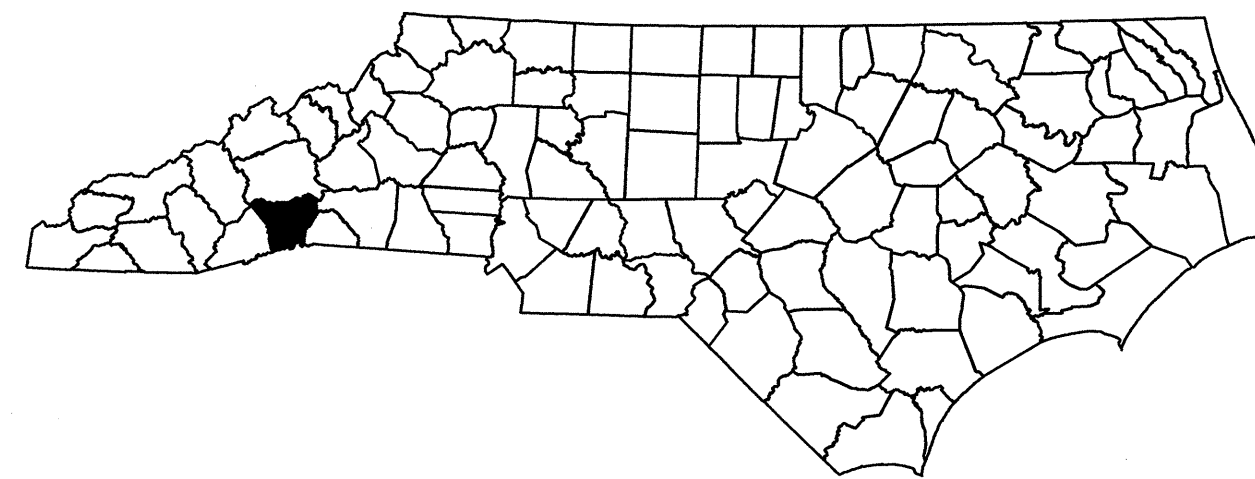


STATE OF NORTH CAROLINA
DIVISION OF HIGHWAYS

TRANSPORTATION MANAGEMENT PLAN

HENDERSON COUNTY



VICINITY MAP

INDEX OF SHEETS

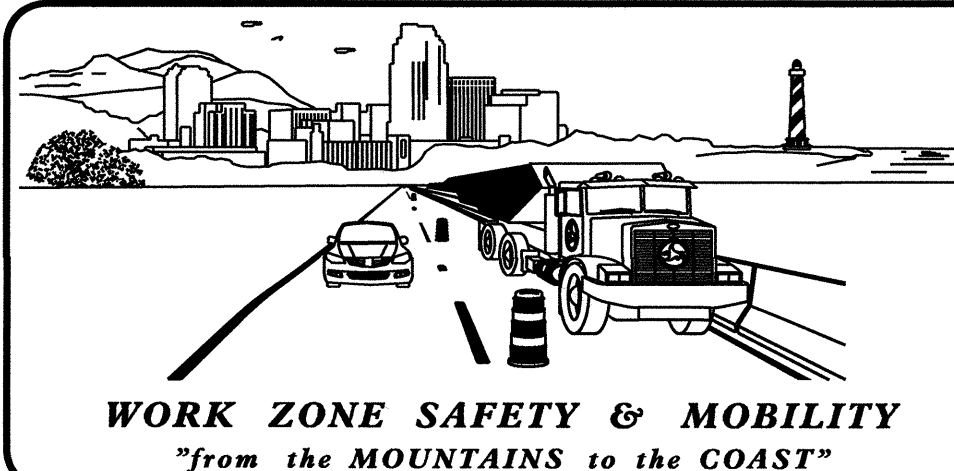
SHEET NO.	TITLE
TMP-1	TITLE SHEET, AND INDEX OF SHEETS
TMP-1A	LIST OF APPLICABLE ROADWAY STANDARD DRAWINGS, LEGEND, AND TEMPORARY PAVEMENT MARKINGS
TMP-1B	TRANSPORTATION OPERATIONS PLAN: (TRANSPORTATION OPERATIONS AND GENERAL NOTES)
TMP-2	PHASING AND PHASE I DETAILS
TMP-3	PHASE II DETAILS
TMP-4	PHASE III DETAILS

SHEET NO.
TMP-1

B-4547

TIP PROJECT:

22-JAN-2013 11:33
\\dot\dfsroot\proj\TIP\Projects-B\B4547\TrafficControl\TCP\B4547-TC-TMP01.dgn
scotts AT 12265846



N.C.D.O.T. WORK ZONE TRAFFIC CONTROL
1561 MAIL SERVICE CENTER (MSC) RALEIGH, NC 27699-1561
750 N. GREENFIELD PARKWAY, GARNER, NC 27529 (DELIVERY)
PHONE: (919) 773-2800 FAX: (919) 771-2745

J. S. BOURNE, P.E. STATE TRAFFIC MANAGEMENT ENGINEER
G. L. GETTIER, P.E. TRAFFIC CONTROL PROJECT ENGINEER
J. W. WOOLARD, P.E. TRAFFIC CONTROL PROJECT DESIGN ENGINEER
S. B. COATS TRAFFIC CONTROL DESIGN ENGINEER



APPROVED: _____
DATE: _____

SEAL

ROADWAY STANDARD DRAWINGS

THE FOLLOWING ROADWAY STANDARDS AS SHOWN IN "ROADWAY STANDARD DRAWINGS" - PROJECT SERVICES UNIT - N.C. DEPARTMENT OF TRANSPORTATION - RALEIGH, N.C., DATED JANUARY 2012 ARE APPLICABLE TO THIS PROJECT AND BY REFERENCE HEREBY ARE CONSIDERED A PART OF THESE PLANS:

STD. NO.	TITLE
1101.01	WORK ZONE WARNING SIGNS
1101.02	TEMPORARY LANE CLOSURES
1101.03	TEMPORARY ROAD CLOSURES
1101.05	WORK ZONE VEHICLE ACCESSES
1101.11	TRAFFIC CONTROL DESIGN TABLES
1110.01	STATIONARY WORK ZONE SIGNS
1110.02	PORTABLE WORK ZONE SIGNS
1130.01	DRUMS
1135.01	CONES
1145.01	BARRICADES
1150.01	FLAGGING DEVICES
1180.01	SKINNY - DRUM
1205.01	PAVEMENT MARKINGS - LINE TYPES AND OFFSETS
1205.02	PAVEMENT MARKINGS - TWO LANE AND MULTILANE ROADWAYS
1250.01	RAISED PAVEMENT MARKERS - INSTALLATION SPACING
1251.01	RAISED PAVEMENT MARKERS - (PERMANENT AND TEMPORARY)
1261.01	GUARDRAIL AND BARRIER DELINEATORS - INSTALLATION SPACING
1261.02	GUARDRAIL AND BARRIER DELINEATORS - TYPES AND MOUNTING
1262.01	GUARDRAIL END DELINEATION

LEGEND

GENERAL

- DIRECTION OF TRAFFIC FLOW
- DIRECTION OF PEDESTRIAN TRAFFIC FLOW
- EXIST. PVMT.
- NORTH ARROW
- PROPOSED PVMT.

- WORK AREA
- REMOVAL
- USER DEFINED (IF NEEDED)
- USER DEFINED (IF NEEDED)

TRAFFIC CONTROL DEVICES

- BARRICADE (TYPE III)
- CONE
- DRUM SKINNY DRUM TUBULAR MARKER
- TEMPORARY CRASH CUSHION
- FLASHING ARROW BOARD
- FLAGGER
- LAW ENFORCEMENT
- TRUCK MOUNTED ATTENUATOR (TMA)
- CHANGEABLE MESSAGE SIGN

TEMPORARY SIGNING

- PORTABLE SIGN
- STATIONARY SIGN
- STATIONARY OR PORTABLE SIGN

SIGNALS

- EXISTING
- PROPOSED
- TEMPORARY

PAVEMENT MARKINGS

- EXISTING LINES
- TEMPORARY LINES

PAVEMENT MARKERS

- CRYSTAL/CRYSTAL
- CRYSTAL/RED
- YELLOW/YELLOW

PAVEMENT MARKING SYMBOLS

- PAVEMENT MARKING SYMBOLS

TEMPORARY PAVEMENT MARKINGS

- PA - 4" WHITE EDGELINE (PAINT)
- PI - 4" YELLOW DOUBLE CENTER (PAINT)

22-JAN-2013 11:34 \\dot\dfsroot\Proj\TIP\Projects-B\4547\TrafficControl\TCP\B4547_TC_TMP01A.dgn scgts AT TE26846

APPROVED: SEAL	DATE: 1/23/13		ROADWAY STANDARD DRAWINGS & LEGEND
-------------------	---------------	--	---

GENERAL NOTES

CHANGES MAY BE REQUIRED WHEN PHYSICAL DIMENSIONS IN THE DETAIL DRAWINGS, STANDARD DETAILS, AND ROADWAY DETAILS ARE NOT ATTAINABLE TO MEET FIELD CONDITIONS OR RESULT IN DUPLICATE OR UNDESIRABLE OVERLAPPING OF DEVICES. MODIFICATION MAY INCLUDE: MOVING, SUPPLEMENTING, COVERING, OR REMOVAL OF DEVICES AS DIRECTED BY THE ENGINEER.

THE FOLLOWING GENERAL NOTES APPLY AT ALL TIMES FOR THE DURATION OF THE CONSTRUCTION PROJECT EXCEPT WHEN OTHERWISE NOTED IN THE PLAN OR DIRECTED BY THE ENGINEER.

LANE AND SHOULDER CLOSURE REQUIREMENTS

- A) REMOVE LANE CLOSURE DEVICES FROM THE LANE WHEN WORK IS NOT BEING PERFORMED BEHIND THE LANE CLOSURE OR WHEN A LANE CLOSURE IS NO LONGER NEEDED OR AS DIRECTED BY THE ENGINEER.
- B) WHEN PERSONNEL AND/OR EQUIPMENT ARE WORKING WITHIN 15 FT OF AN OPEN TRAVEL LANE, CLOSE THE NEAREST OPEN SHOULDER USING ROADWAY STANDARD DRAWING NO. 1101.04 UNLESS THE WORK AREA IS PROTECTED BY BARRIER OR GUARDRAIL OR A LANE CLOSURE IS INSTALLED.
- C) WHEN PERSONNEL AND/OR EQUIPMENT ARE WORKING ON THE SHOULDER ADJACENT TO AN UNDIVIDED FACILITY AND WITHIN 5 FT OF AN OPEN TRAVEL LANE, CLOSE THE NEAREST OPEN TRAVEL LANE USING ROADWAY STANDARD DRAWING NO. 1101.02 UNLESS THE WORK AREA IS PROTECTED BY BARRIER OR GUARDRAIL.
- WHEN PERSONNEL AND/OR EQUIPMENT ARE WORKING ON THE SHOULDER ADJACENT TO A DIVIDED FACILITY AND WITHIN 10 FT OF AN OPEN TRAVEL LANE, CLOSE THE NEAREST OPEN TRAVEL LANE USING ROADWAY STANDARD DRAWING NO. 1101.02 UNLESS THE WORK AREA IS PROTECTED BY BARRIER OR GUARDRAIL.
- D) WHEN PERSONNEL AND/OR EQUIPMENT ARE WORKING WITHIN A LANE OF TRAVEL OF AN UNDIVIDED OR DIVIDED FACILITY, CLOSE THE LANE ACCORDING TO THE TRAFFIC CONTROL PLANS, ROADWAY STANDARD DRAWINGS, OR AS DIRECTED BY THE ENGINEER. CONDUCT THE WORK SO THAT ALL PERSONNEL AND/OR EQUIPMENT REMAIN WITHIN THE CLOSED TRAVEL LANE.
- E) DO NOT WORK SIMULTANEOUSLY WITHIN 15 FT ON BOTH SIDES OF AN OPEN TRAVELWAY, RAMP, OR LOOP WITHIN THE SAME LOCATION UNLESS PROTECTED WITH GUARDRAIL OR BARRIER.

PAVEMENT EDGE DROP OFF REQUIREMENTS

- F) BACKFILL AT A 6:1 SLOPE UP TO THE EDGE AND ELEVATION OF EXISTING PAVEMENT IN AREAS ADJACENT TO AN OPENED TRAVEL LANE THAT HAS AN EDGE OF PAVEMENT DROP-OFF AS FOLLOWS:
- BACKFILL DROP-OFFS THAT EXCEED 2 INCHES ON ROADWAYS WITH POSTED SPEED LIMITS OF 45 MPH OR GREATER.
- BACKFILL DROP-OFFS THAT EXCEED 3 INCHES ON ROADWAYS WITH POSTED SPEED LIMITS LESS THAN 45 MPH.
- BACKFILL WITH SUITABLE COMPACTED MATERIAL, AS APPROVED BY THE ENGINEER, AT NO EXPENSE TO THE DEPARTMENT.

TRAFFIC PATTERN ALTERATIONS

- G) NOTIFY THE ENGINEER TWENTY ONE (21) CALENDAR DAYS PRIOR TO ANY TRAFFIC PATTERN ALTERATION.

SIGNING

- H) INSTALL ADVANCE WORK ZONE WARNING SIGNS WHEN WORK IS WITHIN 40 FT FROM THE EDGE OF TRAVEL LANE AND NO MORE THAN THREE (3) DAYS PRIOR TO THE BEGINNING OF CONSTRUCTION.
- I) ENSURE ALL NECESSARY SIGNING IS IN PLACE PRIOR TO ALTERING ANY TRAFFIC PATTERN.

TRAFFIC CONTROL DEVICES

- J) WHEN LANE CLOSURES ARE NOT IN EFFECT SPACE CHANNELIZING DEVICES IN WORK AREAS NO GREATER IN FEET THAN TWICE THE POSTED SPEED LIMIT (MPH) EXCEPT, 10 FT ON-CENTER IN RADII, AND 3 FT OFF THE EDGE OF AN OPEN TRAVELWAY. REFER TO STANDARD SPECIFICATIONS FOR ROADS AND STRUCTURES SECTIONS 1130 (DRUMS), 1135 (CONES) AND 1180 (SKINNY DRUMS) FOR ADDITIONAL REQUIREMENTS.
- K) PLACE TYPE III BARRICADES, WITH "ROAD CLOSED" SIGN R11-2 ATTACHED, OF SUFFICIENT LENGTH TO CLOSE ENTIRE ROADWAY.

PAVEMENT MARKINGS AND MARKERS

- L) INSTALL TEMPORARY PAVEMENT MARKINGS AND TEMPORARY PAVEMENT MARKERS ON INTERIM LAYERS OF PAVEMENT AS FOLLOWS:

ROAD NAME	MARKING	MARKER
SR 1525	PAINT	N/A
-LDET-	PAINT	TEMPORARY

- M) PLACE ONE APPLICATION OF PAINT FOR TEMPORARY TRAFFIC PATTERNS. PLACE A SECOND APPLICATION OF PAINT SIX (6) MONTHS AFTER THE INITIAL APPLICATION AND EVERY SIX MONTHS AS DIRECTED BY THE ENGINEER.
- N) TIE PROPOSED PAVEMENT MARKING LINES TO EXISTING PAVEMENT MARKING LINES.

TRANSPORTATION OPERATIONS

PROJ. REFERENCE NO.	SHEET NO.
B-4547	TMP-1B

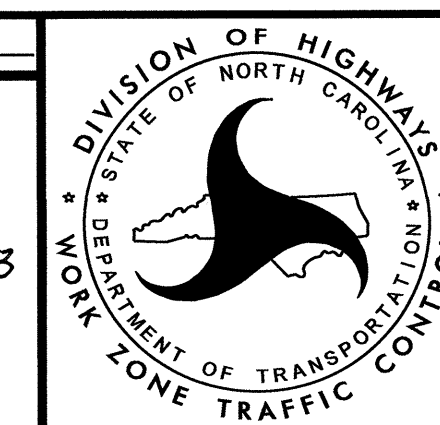
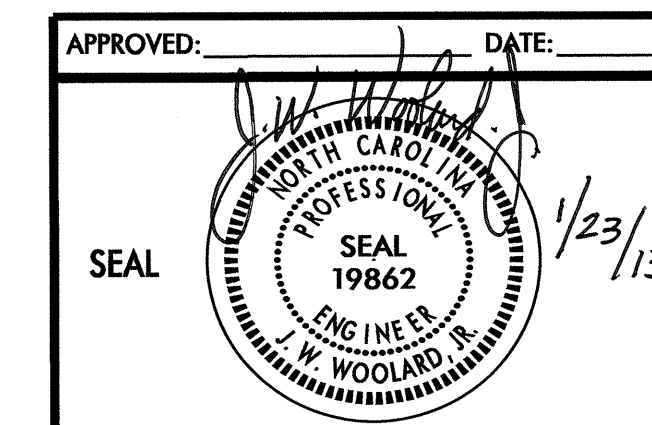
CONSTRUCTION

CONSTRUCT ON-SITE DETOUR INCLUDING TEMPORARY PIPE CULVERT AND HEADWALLS. SHIFT EXISTING TRAFFIC TO ON-SITE DETOUR. CONSTRUCT SR 1525 (DANA RD.) INCLUDING NEW CULVERT AND ROADWAY APPROACHES AS SHOWN IN THE CONSTRUCTION PLANS. OBLITERATE ON-SITE DETOUR AND TEMPORARY PAVEMENT AS SHOWN IN THE CONSTRUCTION PLANS.

TMP DESIGN PARAMETERS

UTILIZE FLAGGERS, TEMPORARY SIGNAGE, TRAFFIC CONTROL DEVICES, AND TEMPORARY GUARDRAIL TO CONSTRUCT ON-SITE DETOUR AND SR 1525 (DANA RD.) (SEE SHEET TMP-2 THRU TMP-4).

22-JAN-2013 11:34
\\dot\dfsroot\Projects\B-4547\TrafficControl\TIP\Projects\B-4547\TrafficControl\TIP\B4547-TC-TMP01B.dgn
SC015 AT 12265836



TRANSPORTATION
OPERATIONS
PLAN

PHASING

PHASE I

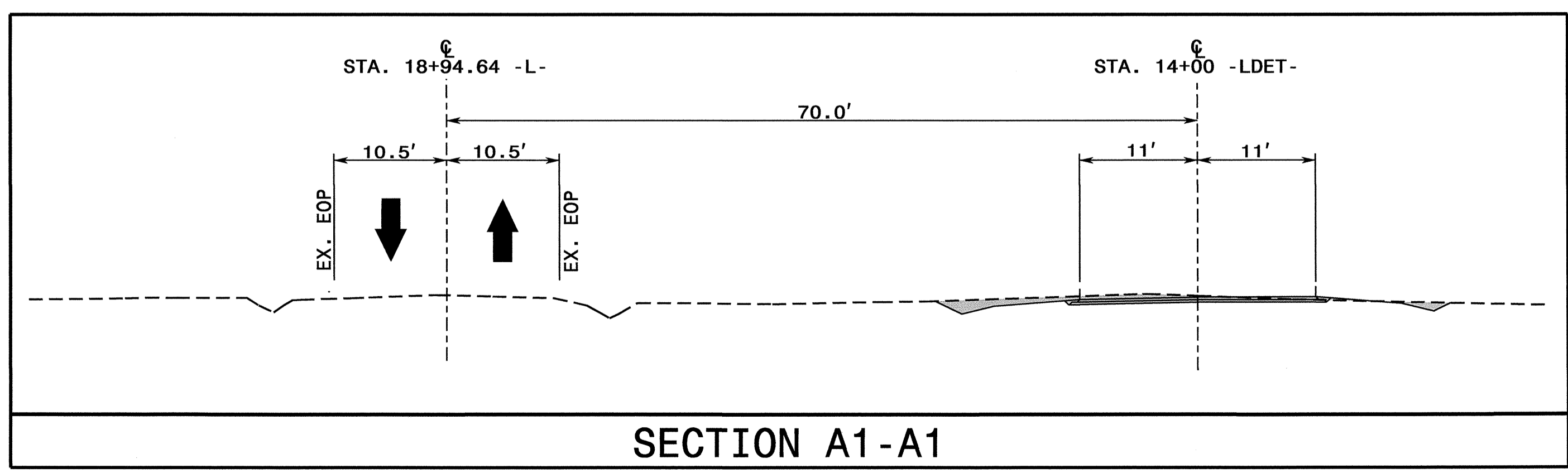
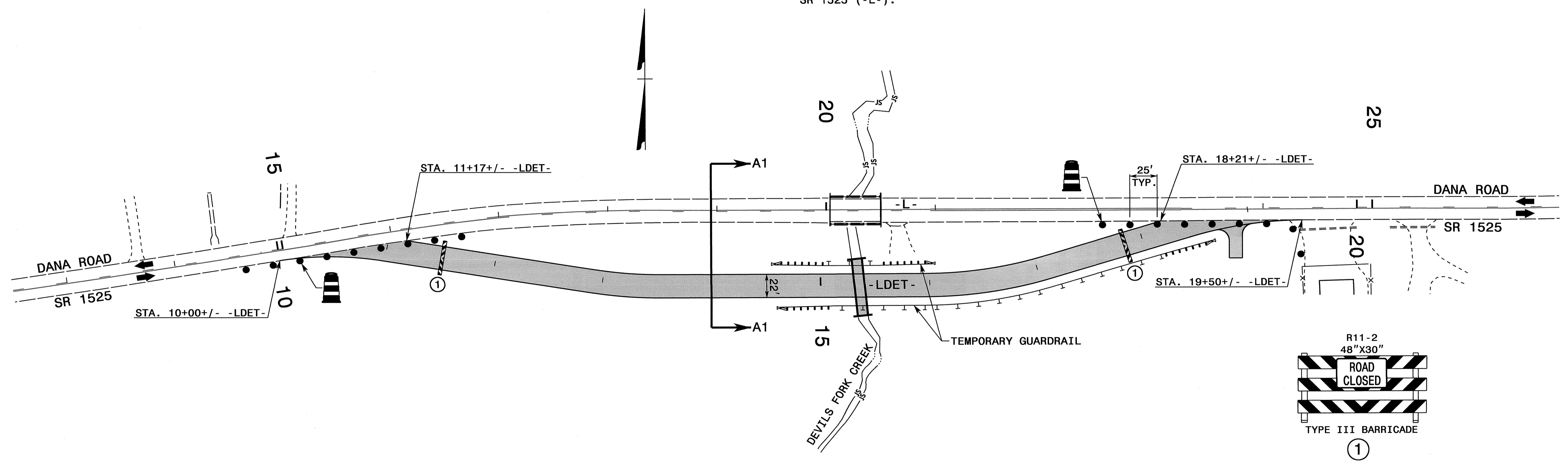
- STEP 1. INSTALL ALL ADVANCE WORK ZONE SIGNS ON SR 1525 (DANA RD.), SEE RSD 1101.01 (SHEET 3 OF 3).
- STEP 2. USING RSD NO. 1101.02 (SHEET 1 OF 15), CONSTRUCT -LDET- LINE, INCLUDING CULVERT PIPE, TEMPORARY DRAINAGE, AND TEMPORARY GUARDRAIL, UP TO EDGE AND ELEVATION OF THE EXISTING PAVEMENT AS FOLLOWS (SEE CONSTRUCTION PLANS AND TMP-2):
- STA. 10+00+/- -LDET- TO STA. 19+50+/- -LDET-

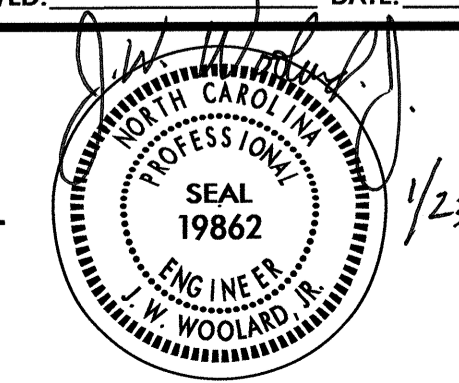
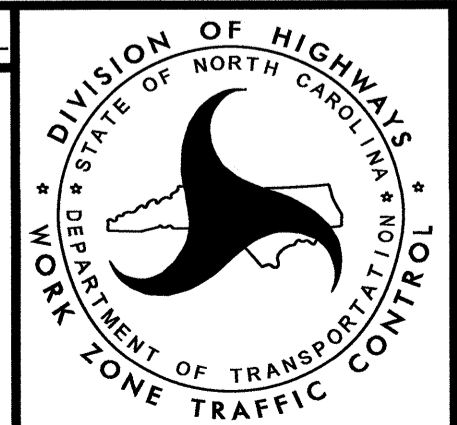
PHASE II

- STEP 1. USING RSD NO. 1101.02 (SHEET 1 OF 15), PLACE TEMPORARY PAVEMENT MARKINGS AND MARKERS AS FOLLOWS (SEE CONSTRUCTION PLANS AND TMP-3):
- STA. 9+95+/- -L- TO STA. 27+71+/- -L-
- SHIFT TRAFFIC FROM A TWO-LANE, TWO-WAY TRAFFIC TO A TWO-LANE, TWO-WAY TRAFFIC PATTERN ON -DET- LINE.
- STEP 2. USING RSD NO. 1101.03 (SHEET 3 OF 9), CONSTRUCT -L- LINE, INCLUDING NEW CULVERT, DRAINAGE, AND GUARDRAIL UP TO BUT NOT INCLUDING THE FINAL LAYER OF SURFACE COURSE AS FOLLOWS (SEE CONSTRUCTION PLANS AND TMP-3):
- STA. 18+24+/- -L- TO STA. 22+50+/- -L-

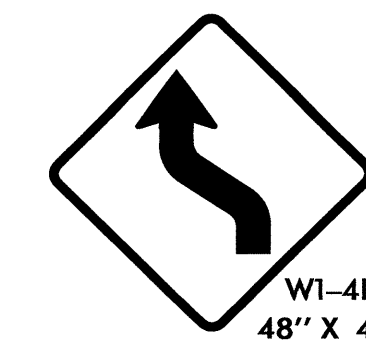
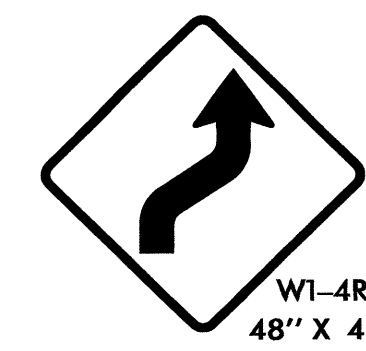
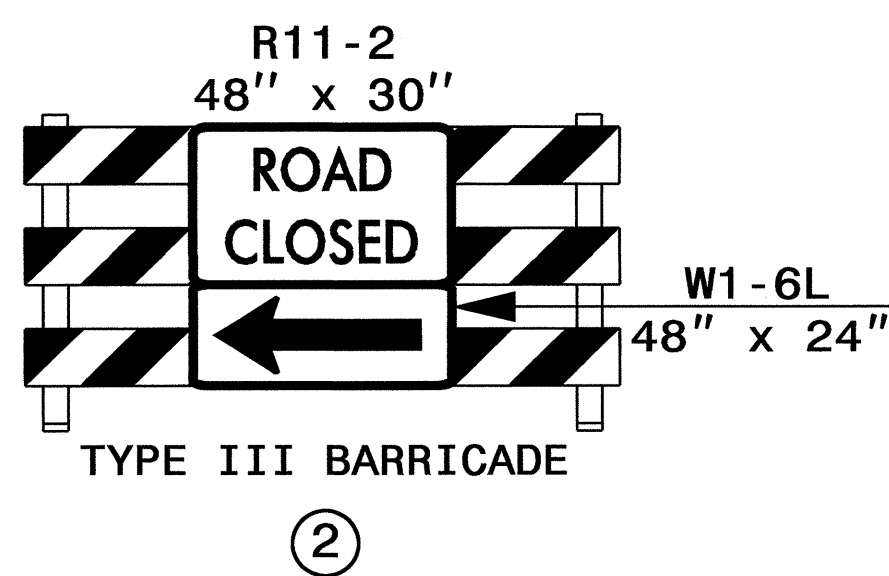
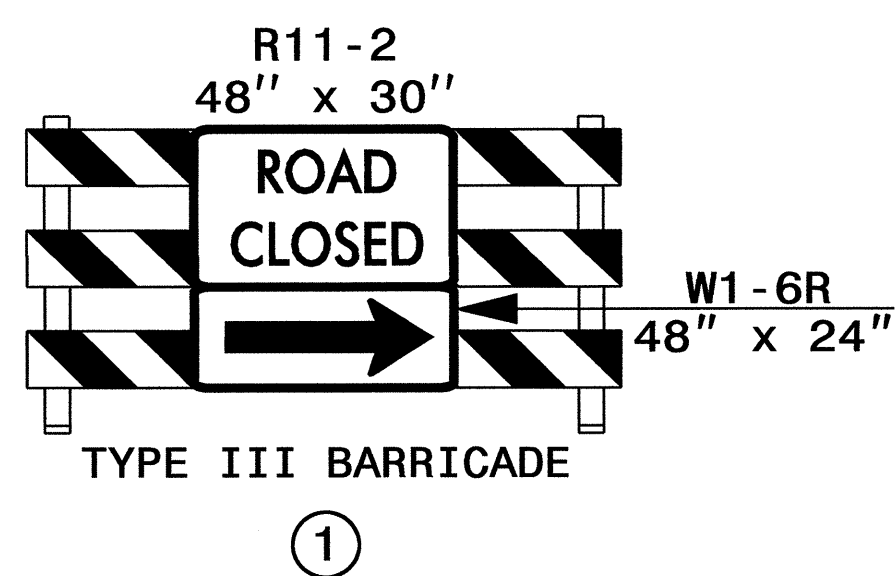
PHASE III

- STEP 1. USING RSD NO. 1101.02 (SHEET 1 OF 15), PAVE/WEDGE -L- LINE UP TO BUT NOT INCLUDING THE FINAL SURFACE COURSE AS FOLLOWS (SEE CONSTRUCTION PLANS AND TMP-4):
- STA. 14+25+/- -L- TO STA. 18+24+/- -L-
 - STA. 22+50+/- -L- TO STA. 25+25+/- -L-
- PLACE TEMPORARY PAVEMENT MARKINGS AND MARKERS AS FOLLOWS (SEE CONSTRUCTION PLANS AND TMP-4):
- STA. 14+25+/- -L- TO STA. 25+25+/- -L-
- SHIFT TRAFFIC TO FINAL TRAFFIC PATTERN ON -L- LINE.
- STEP 2. USING RSD NO. 1101.02 (SHEET 1 OF 15), REMOVE TEMPORARY PAVEMENT, CULVERT PIPE, TEMPORARY GUARDRAIL, AND CONSTRUCT DRIVEWAY AS SHOWN ON TMP-4.
- STEP 3. USING RSD NO. 1101.02 (SHEET 1 OF 15), PAVE/WEDGE UP TO AND INCLUDING THE FINAL LAYER OF SURFACE COURSE AS FOLLOWS (SEE CONSTRUCTION PLANS):
- STA. 14+25+/- -L- TO STA. 25+25+/- -L-
- USING RSD 1101.02 (SHEET 1 OF 15), PLACE FINAL PAVEMENT MARKINGS AS FOLLOWS (SEE FINAL PAVEMENT MARKING PLANS):
- STA. 14+25+/- -L- TO STA. 25+25+/- -L-
- REMOVE ALL TRAFFIC CONTROL DEVICES AND ADVANCE WARNING SIGNS FROM SR 1525 (-L-).



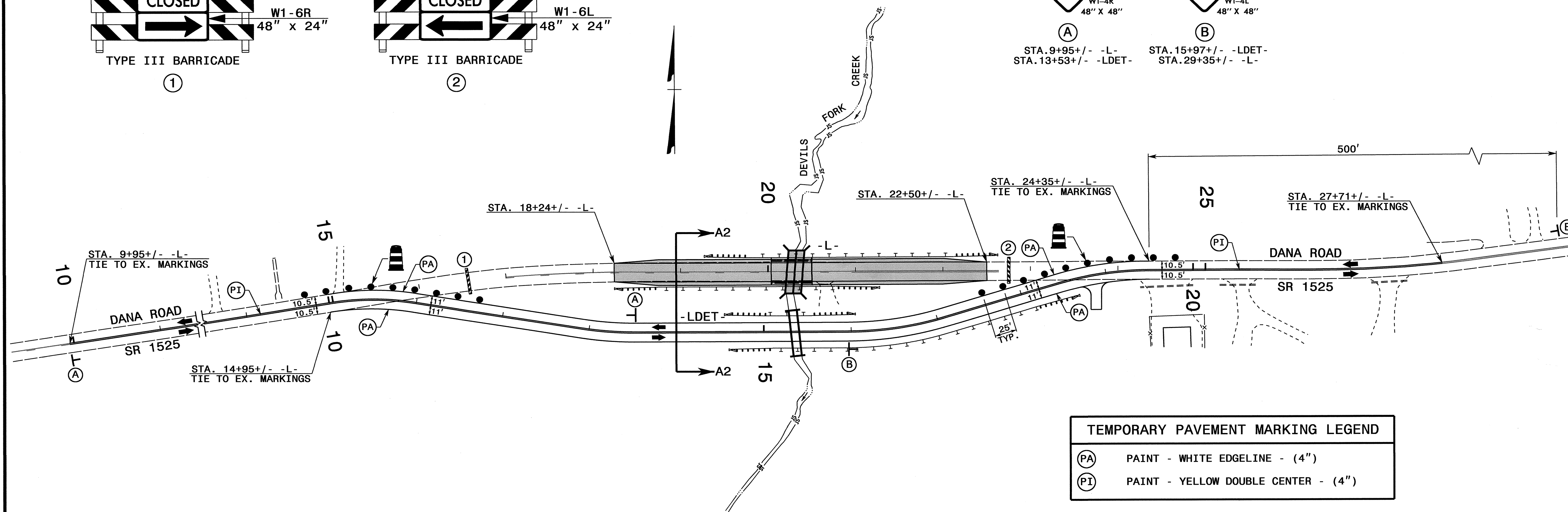
APPROVED: 	DATE: 1/23/13		<h2 style="margin: 0;">PHASING AND PHASE I DETAILS</h2>
---	---------------	---	---

22-JAN-2013 11:35 \\dot\dfsroot\Pro\TIP\Projects-B\4547\TrafficControl\TCP\4547_TC_TMP02.dgn
 scotts AT 1E265846



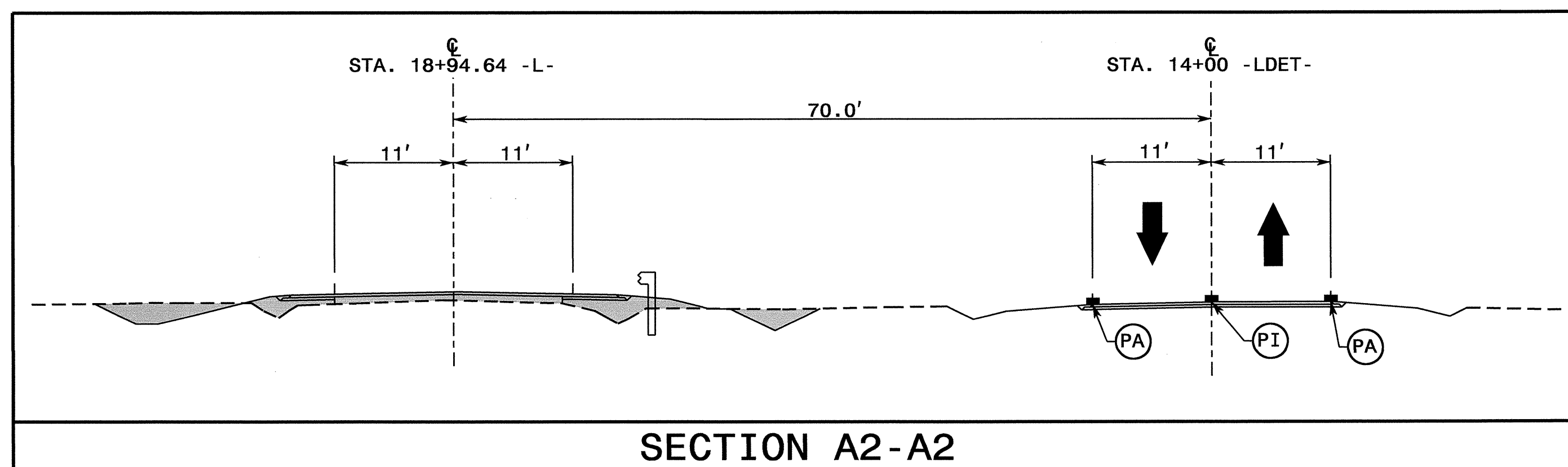
①
STA. 9+95+/- -L-
STA. 13+53+/- -LDET-

②
STA. 15+97+/- -LDET-
STA. 29+35+/- -L-



TEMPORARY PAVEMENT MARKING LEGEND	
(PA)	PAINT - WHITE EDGELINE - (4")
(PI)	PAINT - YELLOW DOUBLE CENTER - (4")

REFER TO RSD NOS. 1205.01, 1205.02, 1250.01, AND 1251.01 FOR PLACEMENT OF TEMPORARY PAVEMENT MARKINGS AND MARKERS UNLESS NOTED OTHERWISE.



SECTION A2-A2

APPROVED: _____ DATE: 1/23/13

PHASE II DETAILS

22-JAN-2013 11:35
 \\dot\dfs\root\Proj\TIP\Projects-B\4547\TrafficControl\TCP\B4547_TC_TMP03.dgn
 scotts AT TE265846

