

NOTES

Assumed Live Load H20-S16 (44)

End Bent 1 to be carried through the roadway fill

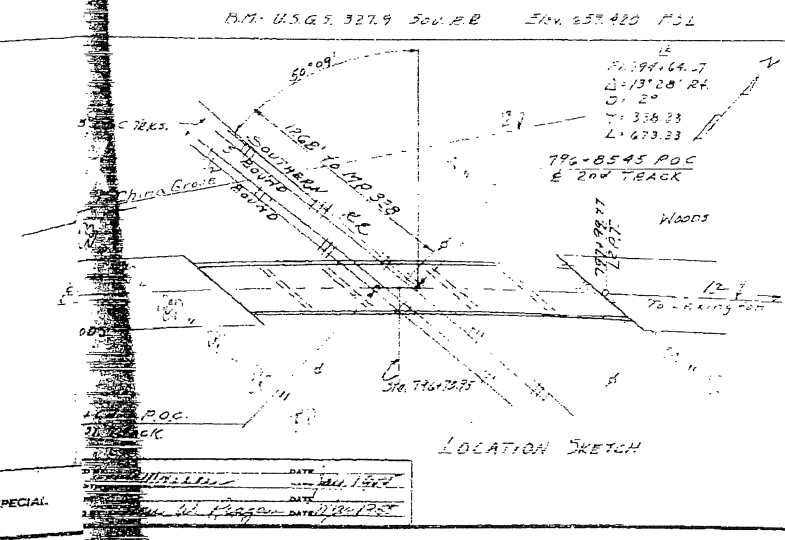
Footings for Bent 1 etc. to be carried at least 6' into rock with minimum thickness as shown.

For road traffic requirements see Section A-A

Test ends will not carry less than 10' to be based on p. 49 30 feet and footing to 4' 3.5 feet long for End Bent #2

At all points where steel is used the water table should be a factor in the design and the steel should be of high yield point steel conforming to the requirements of A.S.T.M. Specification A 7-50 T with a minimum yield point of 36,000 psi and a minimum tensile strength of 58,000 psi.

The steel design data and test load notes see sheet 3-11.



TOTAL BILL OF MATERIAL - FIVE SPANS

	Class A Concrete	Reinf. Steel	Struct. Steel	1/4" H.S.B. Steel Plates	W.C. Mass. Str. Encasement	Water Proof
	Cu. Yds.	Lbs.	Approx. Lbs.	Sq. Ft.	Cu. Yds.	Sq. Yds.
Superstructure	222.6	43925	147900	232.0		2676.28
End Bent #1	18.1	3945	9	370		
Bent #1	37.30	3911		473.95		
Bent #2	45.07	9672		488.91		
Bent #3	49.17	9962		554.45		
Bent #4	146.26	10281		2868.45		
End Bent #4	19.9	4457	10	350		
Approach Curb	3.2	76				
TOTAL	489.6	71227	147900	19,520	12,000	2676.28
	4420		5186		2676	

See Book No. 2; Pages 44-51

I hereby certify that this structure was built as shown on these plans.
Date: 3-12-57 Signed: [Signature] Res. Engr.

PART 18

PROJECT NO. 6734

ROUNDTOWN COUNTY

LOCATION: 196 + 73.95 & Span C

STATE OF NORTH CAROLINA
STATE HIGHWAY AND PUBLIC WORKS COMMISSION

GENERAL DRAWING
BRIDGE OVER SOUTHERN R.R.
ON F.E.D. U.S. 29 - No. ROUND TOWN
SALISBURY BY-PASS
JAN 1957

REVISIONS

DATE

BY

NO.

1

2

3

4

5

6

7

8

9

10

11

12

13

14

15

16

17

18

19

20

21

22

23

24

25

26

27

28

29

30

31

32

33

34

35

36

37

38

39

40

41

42

43

44

45

46

47

48

49

50

51

52

53

54

55

56

57

58

59

60

61

62

63

64

65

66

67

68

69

70

71

72

73

74

75

76

77

78

79

80

81

82

83

84

85

86

87

88

89

90

91

92

93

94

95

96

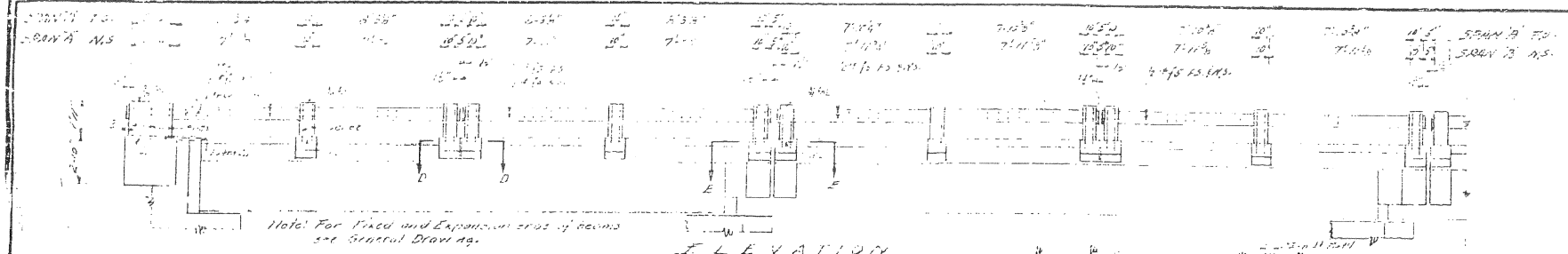
97

98

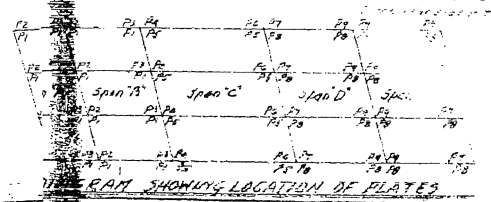
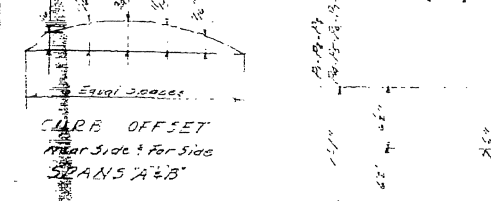
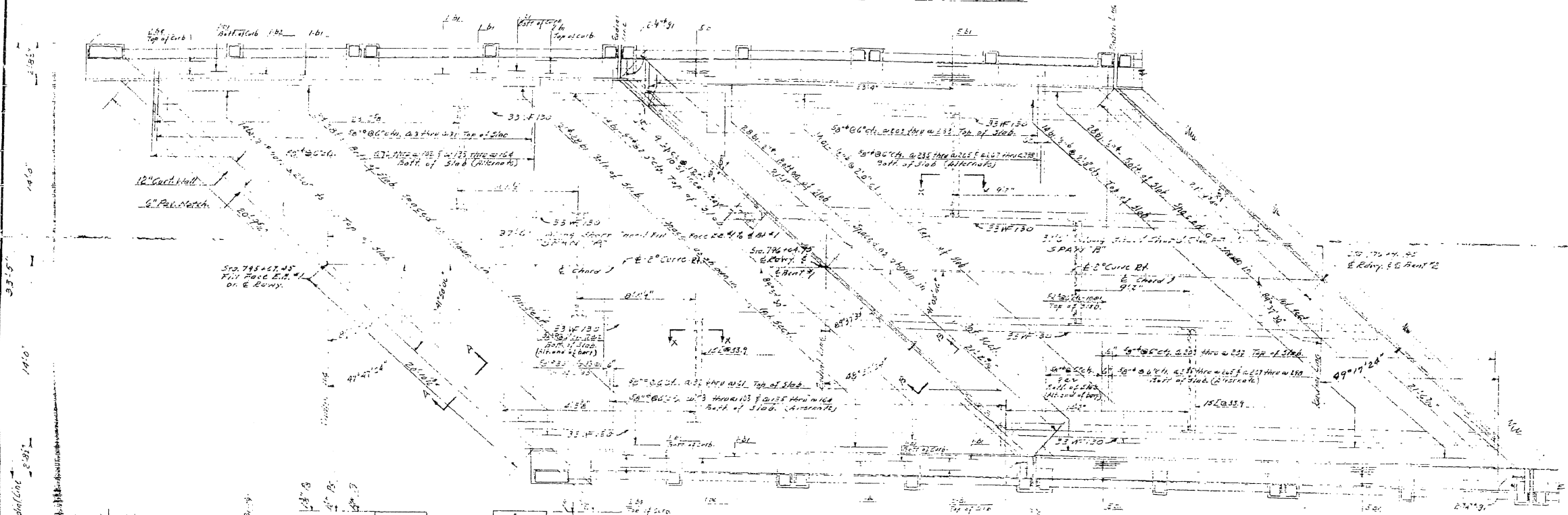
99

100

NO. 1	DATE	PROJECT NO.
3	N.C.	6734
FA Proj. 1706(C)		

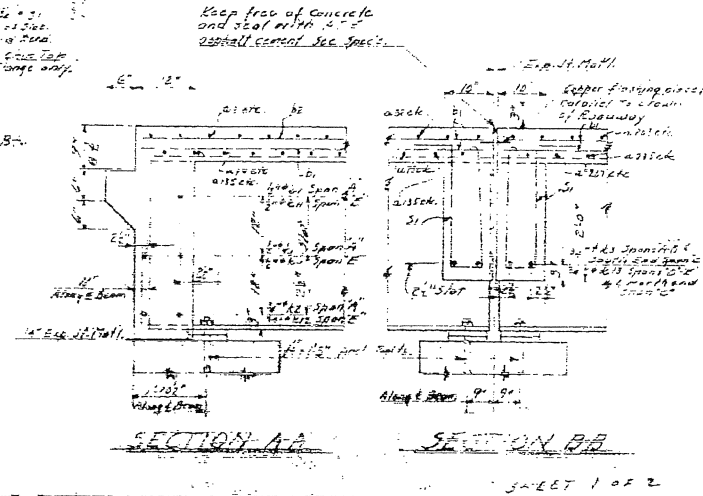
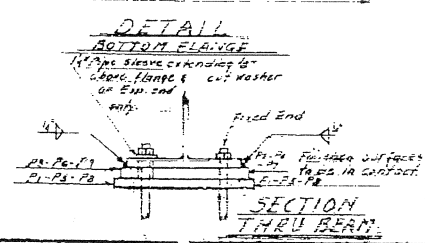


Note: Two ply roofing felt sand be placed over joints in expansion joint material



BEARING PLATE DETAILS

REQUIRED	PLATE	SIZE
R.P. 10	6" x 12" x 1/2"	6" x 12" x 1/2"
R.P. 8	6" x 12" x 1/2"	6" x 12" x 1/2"
R.P. 4	6" x 12" x 1/2"	6" x 12" x 1/2"
R.P. 2	6" x 12" x 1/2"	6" x 12" x 1/2"
R.P. 1	6" x 12" x 1/2"	6" x 12" x 1/2"



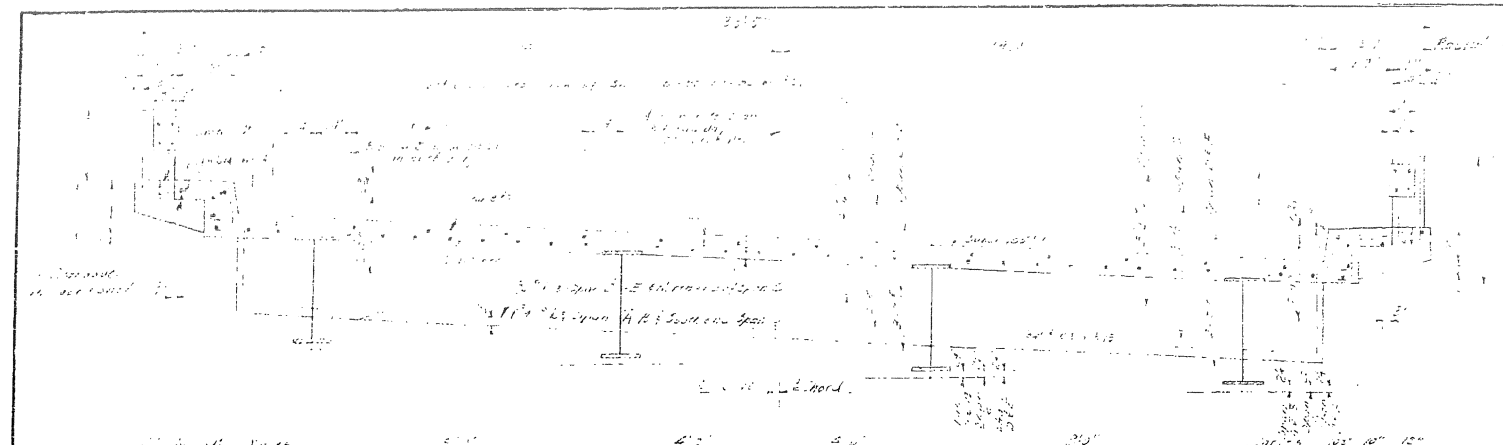
PART B
PROJECT NO. 6734
ROWAN-DANFORTH COUNTY
STATION: 796 + 73.95 (Junc)
SPANS A & B

STATE OF NORTH CAROLINA
STATE HIGHWAY AND
PUBLIC WORKS COMMISSION
RALEIGH
SUPERSTRUCTURE

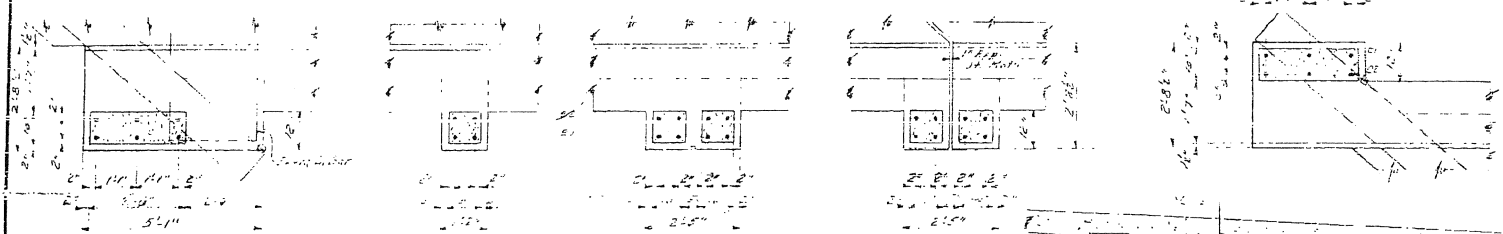
DECEMBER 1954

REVISED	DATE	BY	REASON

SPECIAL
By: *[Signature]* DATE: Dec 1954
Checked: *[Signature]* DATE: Dec 1954

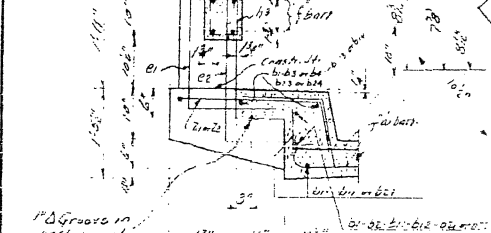


TYPICAL INT. VIEW
ON RADIAL LINE



205 DETAIL

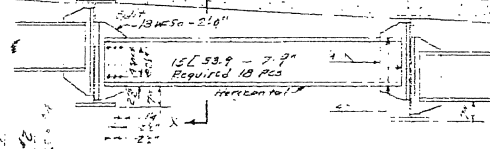
- 48'-5 1/2" Bent #1
- 42'-11 1/4" Bent #2
- 44'-0 1/2" Bent #3
- 44'-11 1/4" Bent #4



SECTION THRU RAIL

COPPER FLASHING

- Required
- 1 Pc 10" x 44" @ Bent #1
 - 1 Pc 10" x 44" @ Bent #2
 - 1 Pc 10" x 44" @ Bent #3
 - 1 Pc 10" x 44" @ Bent #4



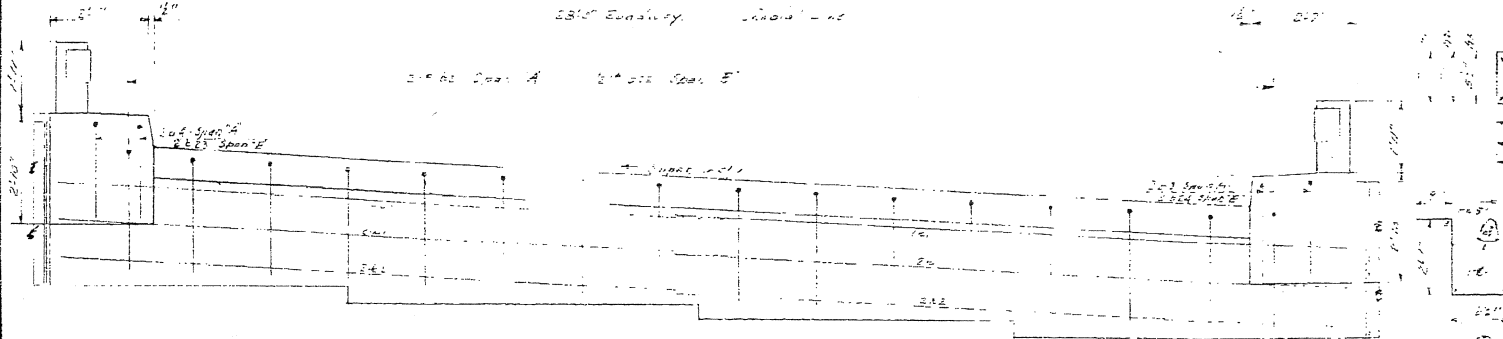
PART INT. SECTION

Note: Field connections of diaphragms to beams shall be bolted using 3/4" turnbuckle bolts, or 3/4" over strength bolts in accordance with AASHO Specs.

Note: At the Contractor's option the connection of channel to angles may be either welded or riveted using 3/4" rivets.

Bill of Materials - Part A

Qty	Desc	Spec	Unit	Weight	Vol	Area	Remarks
1	Steel Deck	A-1	Sq Ft	1000			
2	Beam	A-2	Lbs	10000			
...



TYPICAL END VIEW

SPECIAL
 DESIGNED BY: J.P. Mason DATE: Dec 1934
 TRACED BY: _____ DATE: _____
 CHECKED BY: _____ DATE: _____

Bill of Materials - Part B

Qty	Desc	Spec	Unit	Weight	Vol	Area	Remarks
1	Steel Deck	A-1	Sq Ft	1000			
2	Beam	A-2	Lbs	10000			
...

PART B

PROJECT NO. 6735

BOWEN-DANFORTH COUNTY

ST. ON: 796-73.95

SPANS A & B

STATE OF NORTH CAROLINA
 STATE HIGHWAY AND
 PUBLIC WORKS COMMISSION

DATE OF STRUCTURE

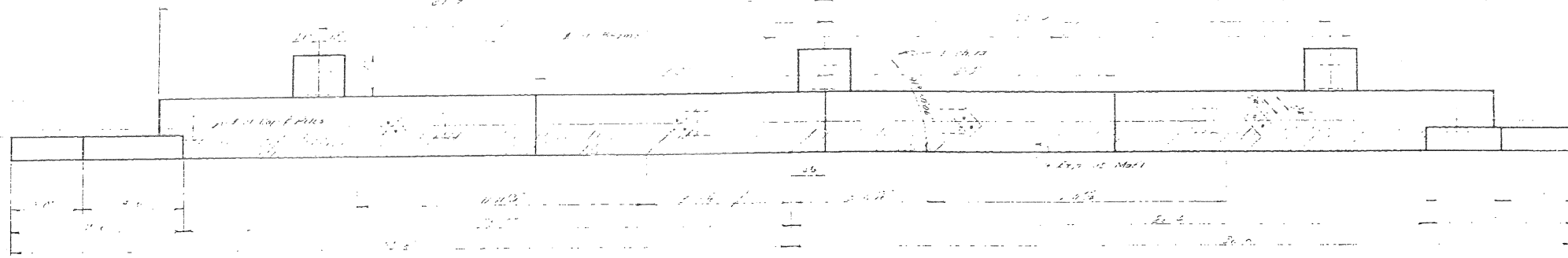
DECEMBER 1934

APPROVED BY: _____ DATE: _____

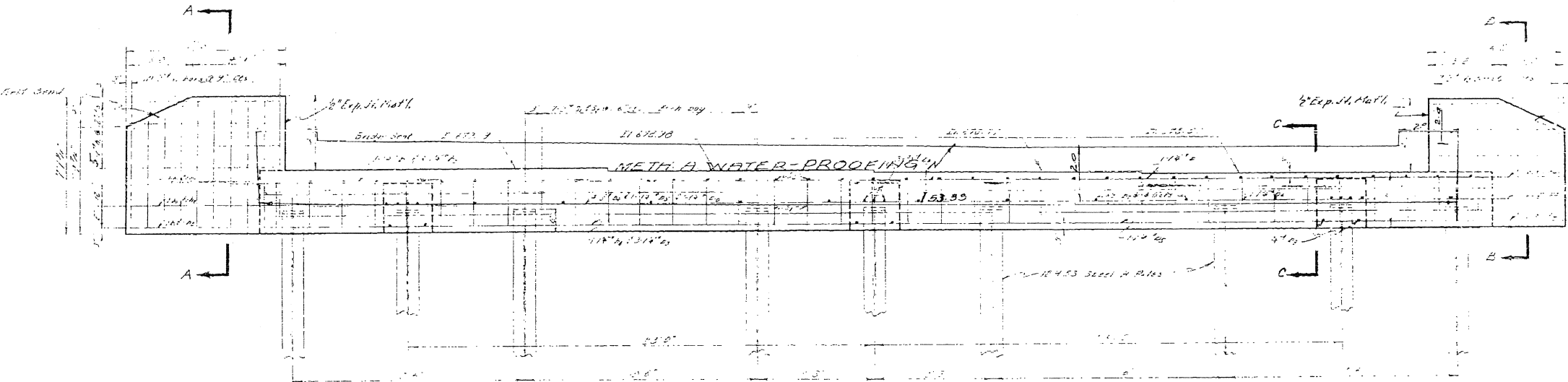
DESIGNED BY: _____ DATE: _____

CHECKED BY: _____ DATE: _____

NO.	DATE	PROJECT NO.
3	NC	1754
		708 C12

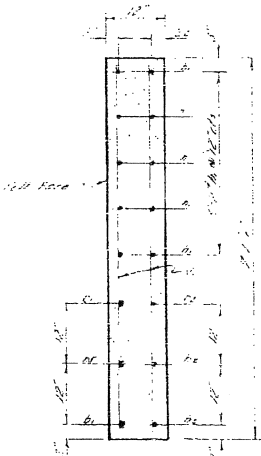


PLAN OF CAP

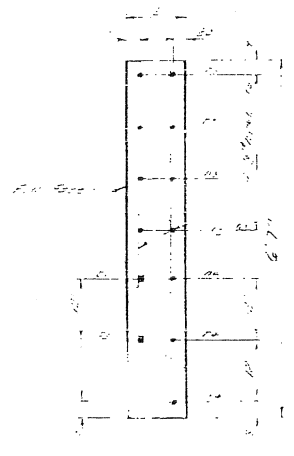


ELEVATION

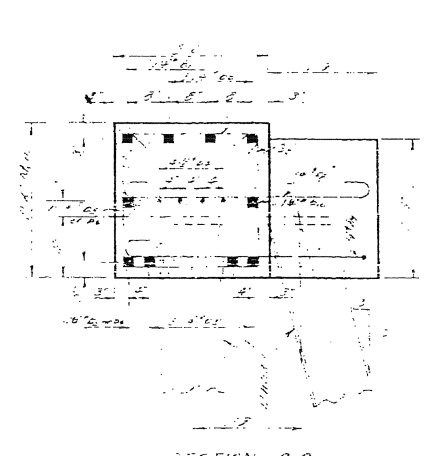
METH A WATER-PROOFING
 59.33 X 20 = 10666 #
 20 X 20 = 800
 TOTAL = 11466 # = 12,475.9 Yds.



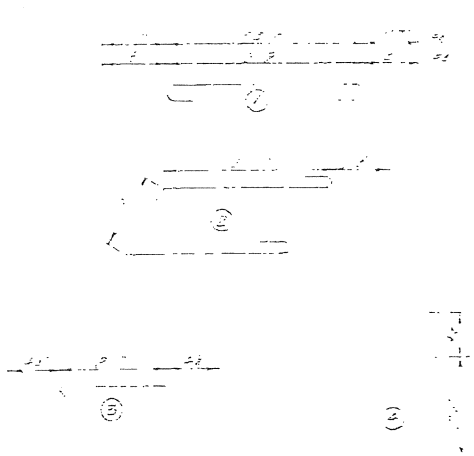
SECTION A-A



SECTION B-B



SECTION C-C



BAR TYPES

ALL BAR DIMENSIONS ARE IN INCHES UNLESS NOTED OTHERWISE

TOTAL QUANTITY OF MATERIAL

NO.	DESCRIPTION	QUANTITY
1	20\"/>	

PART 17
 PROJECT NO. 1754
 RICHMOND COUNTY
 STATION: 726+73.75
 END BENT NO. 1

STATE OF NORTH CAROLINA
 STATE HIGHWAY AND
 PUBLIC WORKS COMMISSION
 SUBSTRUCTURE

DECEMBER 1954

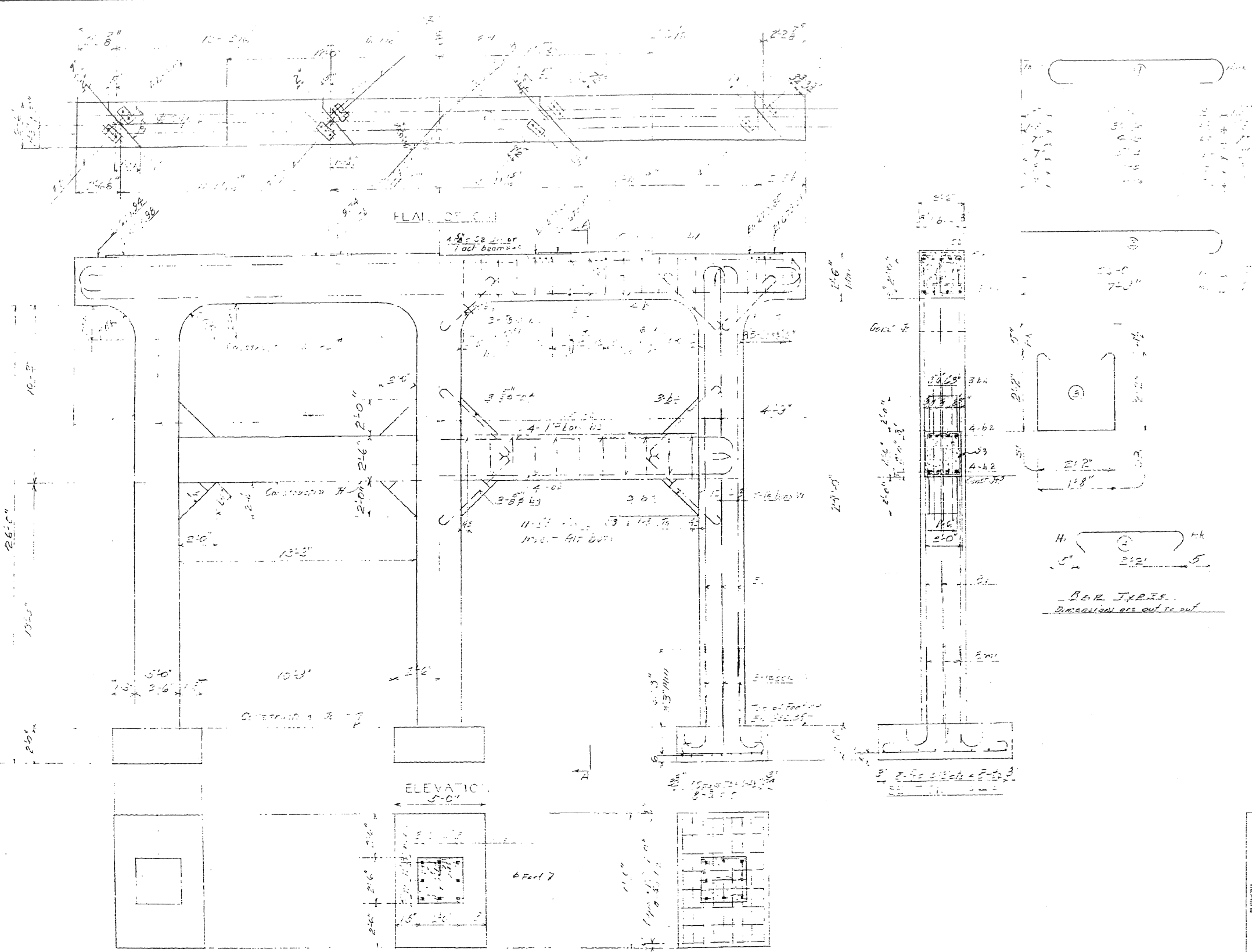
SPECIAL

DESIGNED BY	DATE
DRAWN BY	DATE
CHECKED BY	DATE

REVISIONS	DATE	BY	REASON

NO.	DATE	BY	PROJECT NO.
1		H.C.	6734

51	10	1	1	20.38
61	10	1	1	952
63	10	1	1	156
64	10	1	1	155
65	10	1	1	17.35
66	10	1	1	3716
67	10	1	1	306
68	10	1	1	11
69	10	1	1	40
70	10	1	1	310
71	10	1	1	192



BAR TYPES
 DIRECTION OUT TO OUT

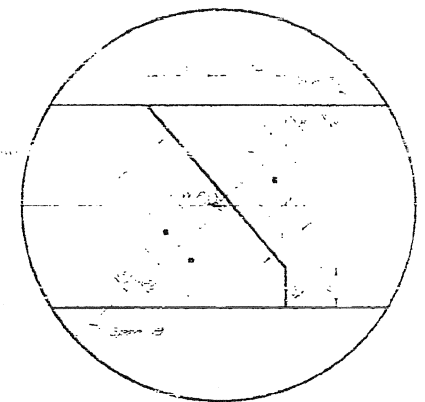
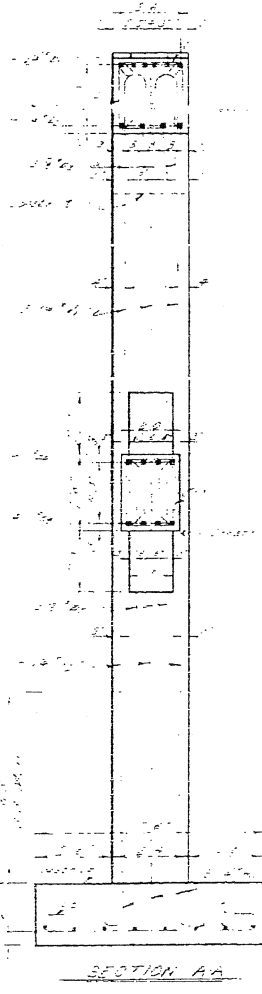
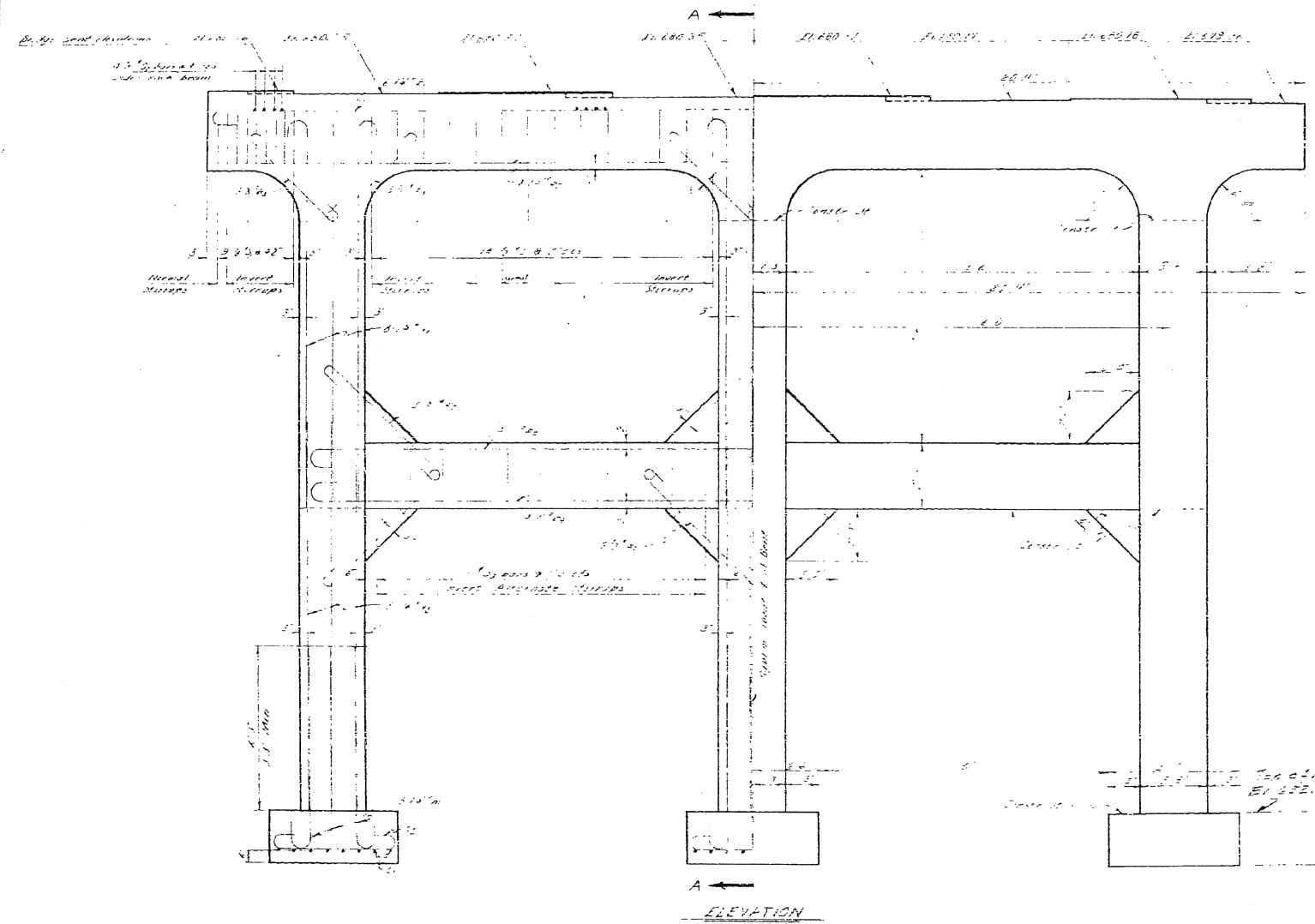
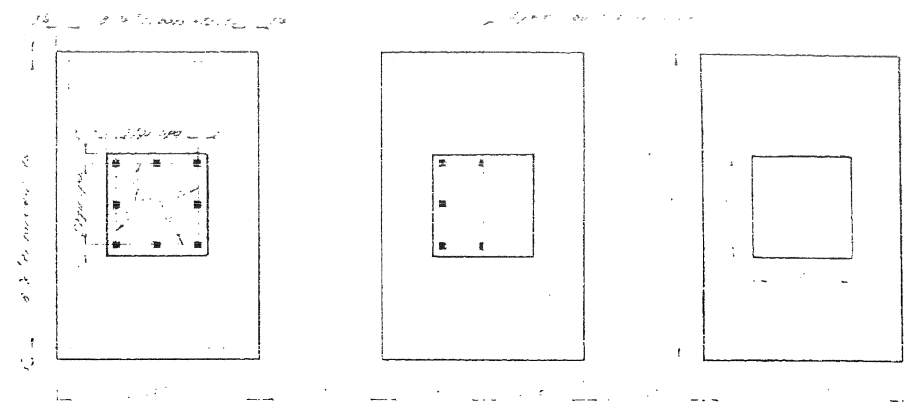
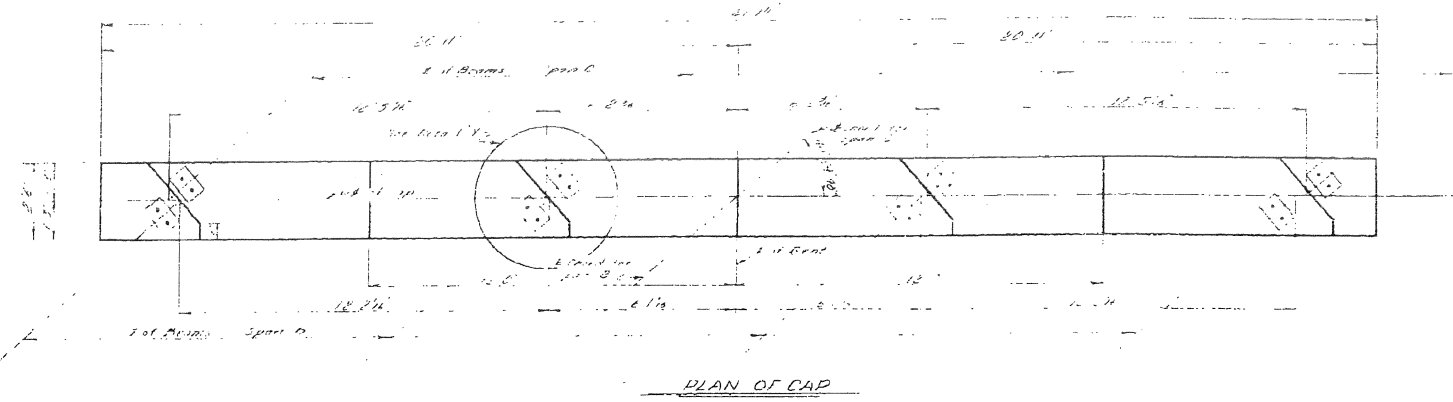
PART A
 PROJECT NO. 6734
 FAYETTEVILLE COUNTY
 STATION: 796.79.05

STATE OF NORTH CAROLINA	
STATE HIGHWAY AND PUBLIC WORKS COMMISSION	
SPECIAL	
APPROVED: [Signature] DATE: 1-26-55	
APPROVED: [Signature] DATE: 1-26-55	

DESIGNED BY: [Signature] DATE: 1-15-55
 CHECKED BY: [Signature] DATE: Feb. 1955

PLAN OF FOOTING

NO. OF SHEETS	DATE	PROJECT NO.
3	11-1-55	6734
FA. (11) (1) (1955)		



DETAIL 1
 1
 2
 3
 4
 5
 6
 7
 8
 9
 10
 11
 12
 13
 14
 15
 16
 17
 18
 19
 20
 21
 22
 23
 24
 25
 26
 27
 28
 29
 30
 31
 32
 33
 34
 35
 36
 37
 38
 39
 40
 41
 42
 43
 44
 45
 46
 47
 48
 49
 50
 51
 52
 53
 54
 55
 56
 57
 58
 59
 60
 61
 62
 63
 64
 65
 66
 67
 68
 69
 70
 71
 72
 73
 74
 75
 76
 77
 78
 79
 80
 81
 82
 83
 84
 85
 86
 87
 88
 89
 90
 91
 92
 93
 94
 95
 96
 97
 98
 99
 100

BILL OF MATERIAL

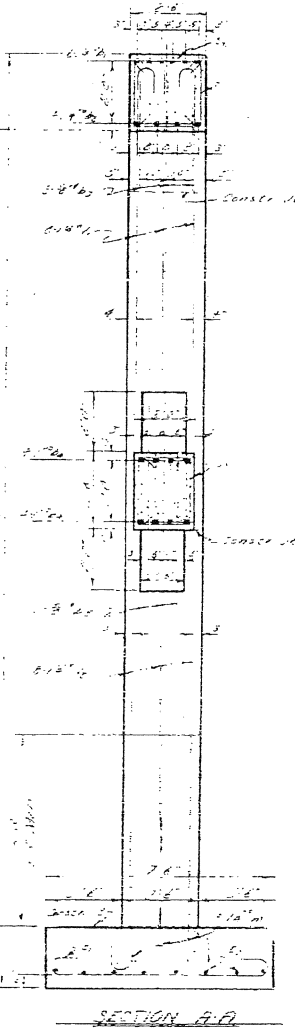
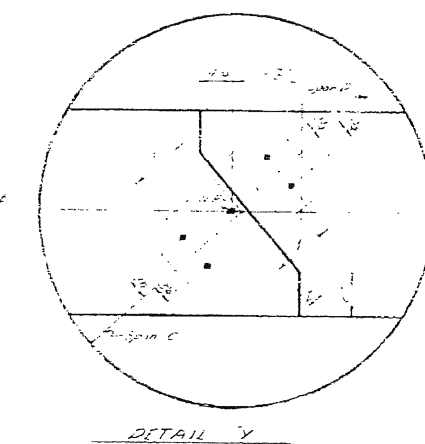
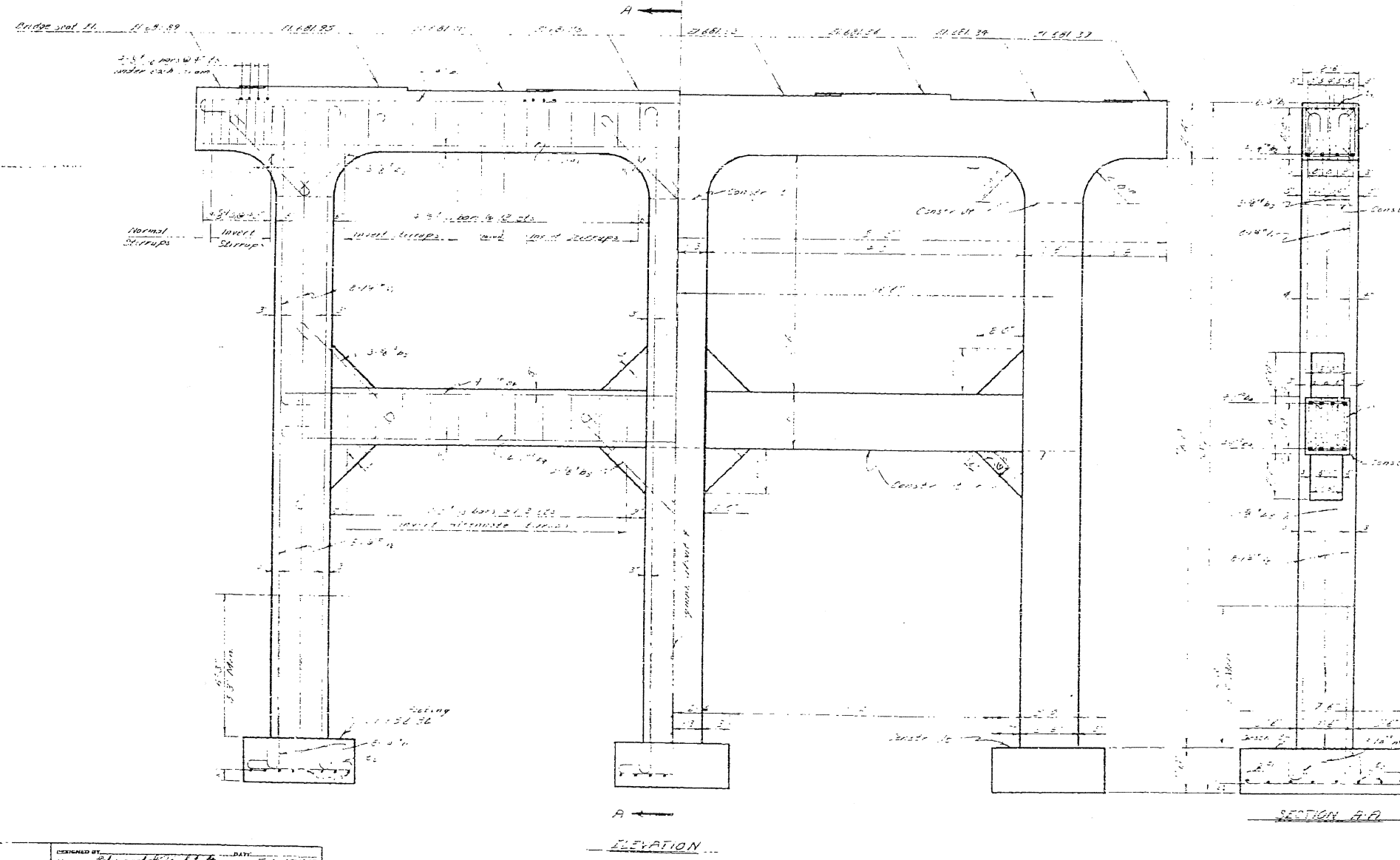
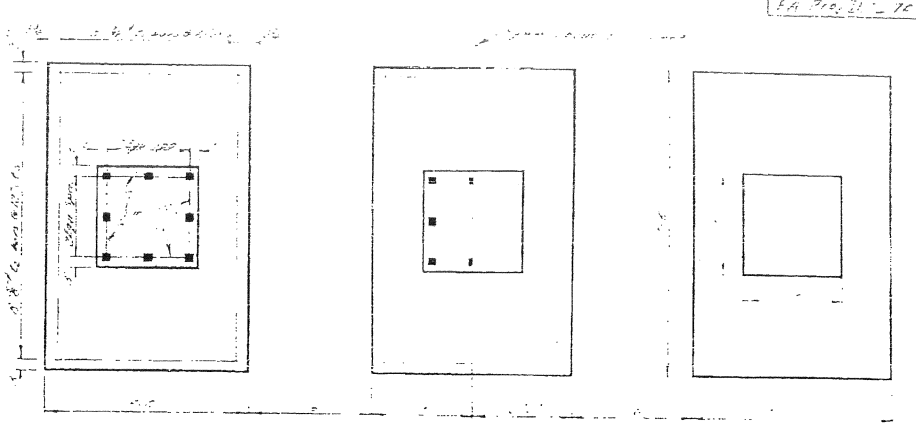
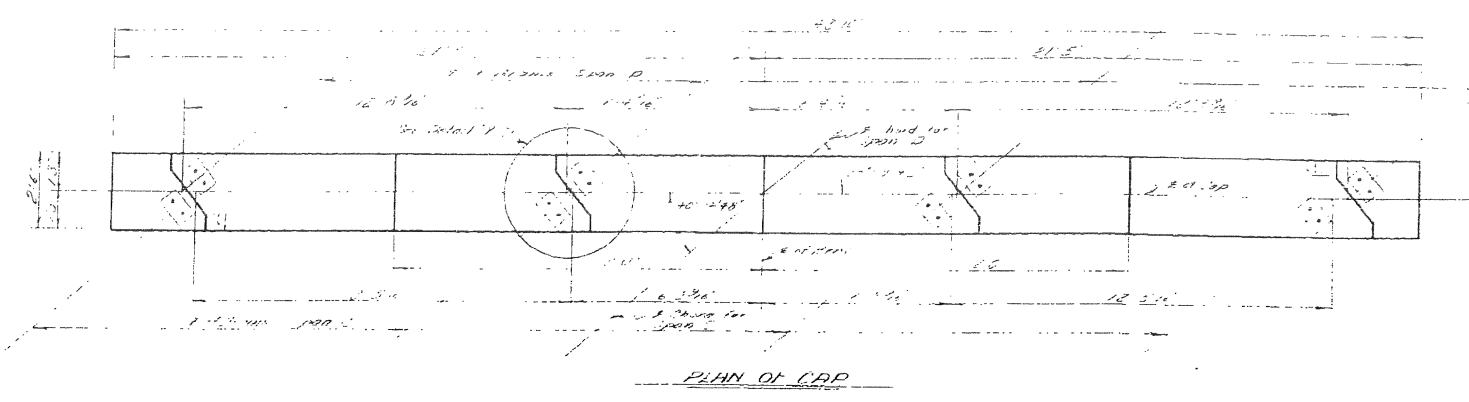
NO.	DESCRIPTION	QTY.	UNIT
1
2
3
4
5
6
7
8
9
10
11
12
13
14
15
16
17
18
19
20
21
22
23
24
25
26
27
28
29
30
31
32
33
34
35
36
37
38
39
40
41
42
43
44
45
46
47
48
49
50
51
52
53
54
55
56
57
58
59
60
61
62
63
64
65
66
67
68
69
70
71
72
73
74
75
76
77
78
79
80
81
82
83
84
85
86
87
88
89
90
91
92
93
94
95
96
97
98
99
100

PART 'B'
 PROJECT NO. 6734
 WATH WASHINGTON COUNTY
 STATION: 786+73.95 to Span C
 BENT NO. 2

STATE OF NORTH CAROLINA STATE HIGHWAY AND PUBLIC WORKS COMMISSION RALEIGH SUBSTRUCTURE	
JANUARY 1955	
DESIGNED BY	DATE
DRAWN BY	DATE
CHECKED BY	DATE
APPROVED BY	DATE

SPECIAL
 DESIGNED BY: [Signature]
 DATE: 11-1-55
 DRAWN BY: [Signature]
 DATE: 11-1-55
 CHECKED BY: [Signature]
 DATE: 11-1-55

NO.	REV.	DATE
1	HC	5/34
EA Proj. 75-734 (1)		



BILL OF MATERIAL

NO.	DESCRIPTION	QTY.	UNIT
1	CONCRETE	100	CU YD
2	STEEL	100	LB
3	FORMWORK	100	SQ YD
4	PAINT	100	GA
5	REINFORCEMENT	100	LB
6	BRICK	100	1000
7	CEMENT	100	BA
8	SAND	100	CY
9	GRAVEL	100	CY
10	AGGREGATE	100	CY
11	WOOD	100	CU YD
12	IRON	100	LB
13	STEEL	100	LB
14	PAINT	100	GA
15	REINFORCEMENT	100	LB
16	BRICK	100	1000
17	CEMENT	100	BA
18	SAND	100	CY
19	GRAVEL	100	CY
20	AGGREGATE	100	CY
21	WOOD	100	CU YD
22	IRON	100	LB
23	STEEL	100	LB
24	PAINT	100	GA
25	REINFORCEMENT	100	LB
26	BRICK	100	1000
27	CEMENT	100	BA
28	SAND	100	CY
29	GRAVEL	100	CY
30	AGGREGATE	100	CY
31	WOOD	100	CU YD
32	IRON	100	LB
33	STEEL	100	LB
34	PAINT	100	GA
35	REINFORCEMENT	100	LB
36	BRICK	100	1000
37	CEMENT	100	BA
38	SAND	100	CY
39	GRAVEL	100	CY
40	AGGREGATE	100	CY
41	WOOD	100	CU YD
42	IRON	100	LB
43	STEEL	100	LB
44	PAINT	100	GA
45	REINFORCEMENT	100	LB
46	BRICK	100	1000
47	CEMENT	100	BA
48	SAND	100	CY
49	GRAVEL	100	CY
50	AGGREGATE	100	CY
51	WOOD	100	CU YD
52	IRON	100	LB
53	STEEL	100	LB
54	PAINT	100	GA
55	REINFORCEMENT	100	LB
56	BRICK	100	1000
57	CEMENT	100	BA
58	SAND	100	CY
59	GRAVEL	100	CY
60	AGGREGATE	100	CY
61	WOOD	100	CU YD
62	IRON	100	LB
63	STEEL	100	LB
64	PAINT	100	GA
65	REINFORCEMENT	100	LB
66	BRICK	100	1000
67	CEMENT	100	BA
68	SAND	100	CY
69	GRAVEL	100	CY
70	AGGREGATE	100	CY
71	WOOD	100	CU YD
72	IRON	100	LB
73	STEEL	100	LB
74	PAINT	100	GA
75	REINFORCEMENT	100	LB
76	BRICK	100	1000
77	CEMENT	100	BA
78	SAND	100	CY
79	GRAVEL	100	CY
80	AGGREGATE	100	CY
81	WOOD	100	CU YD
82	IRON	100	LB
83	STEEL	100	LB
84	PAINT	100	GA
85	REINFORCEMENT	100	LB
86	BRICK	100	1000
87	CEMENT	100	BA
88	SAND	100	CY
89	GRAVEL	100	CY
90	AGGREGATE	100	CY
91	WOOD	100	CU YD
92	IRON	100	LB
93	STEEL	100	LB
94	PAINT	100	GA
95	REINFORCEMENT	100	LB
96	BRICK	100	1000
97	CEMENT	100	BA
98	SAND	100	CY
99	GRAVEL	100	CY
100	AGGREGATE	100	CY

DESIGNED BY: *[Signature]* DATE: Feb 1955
 DRAWN BY: *[Signature]* DATE: Feb 1955
 CHECKED BY: *[Signature]* DATE: Feb 1955

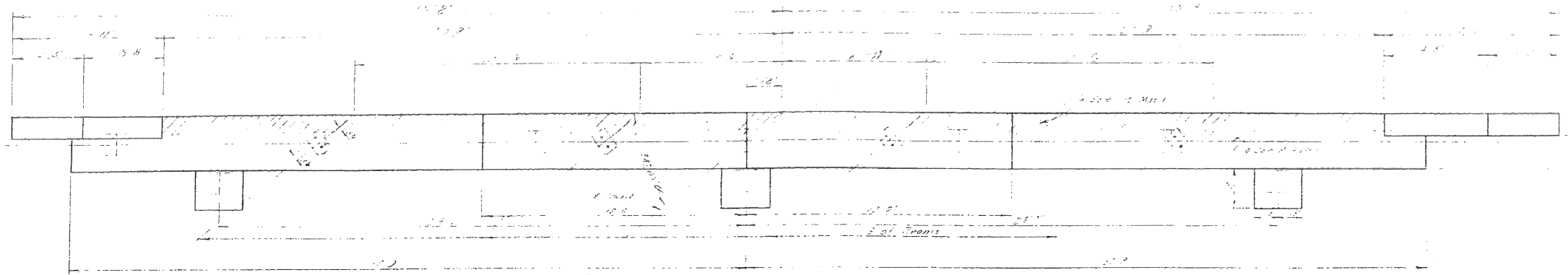
PROJECT NO. ^{PART 13} 6734
 LENOIR COUNTY
 STATION: 75+73.95 E Span C
 DEPT NO 3

STATE OF NORTH CAROLINA
 STATE HIGHWAY AND
 PUBLIC WORKS COMMISSION
 BRIDGE
 SUBSTRUCTURE

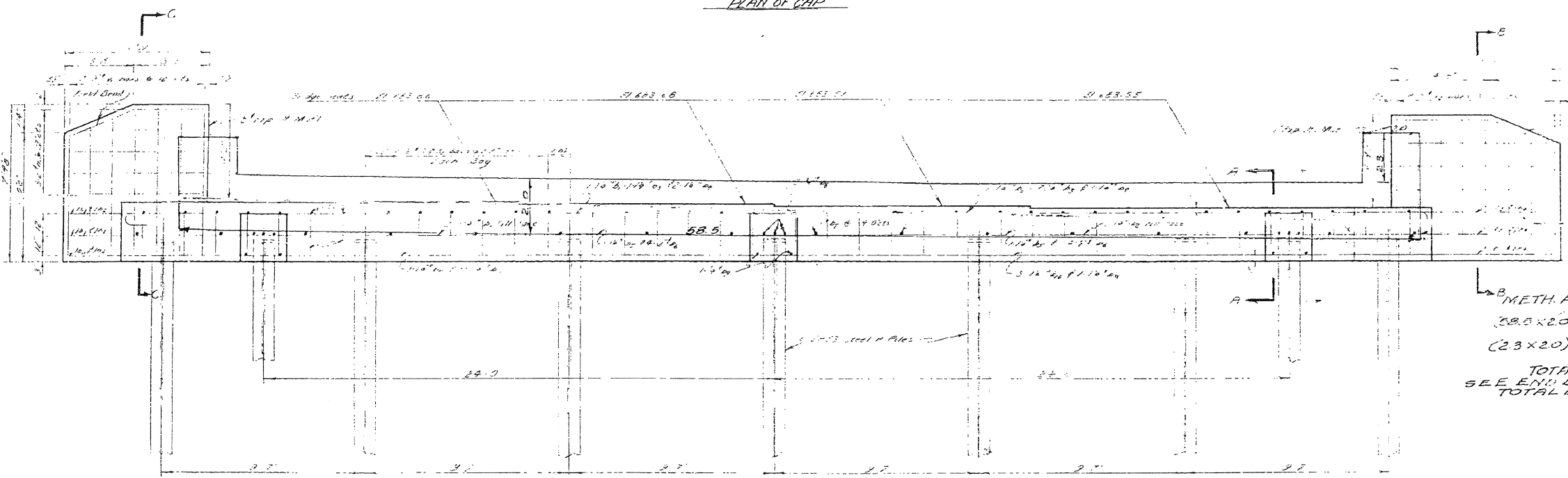
FEBRUARY 1955

PREPARED BY: *[Signature]* DATE: 5-55
 CHECKED BY: *[Signature]* DATE: 5-55

NO.	REV.	DATE
3	1	7-24
F.A. [unclear]		768(1)

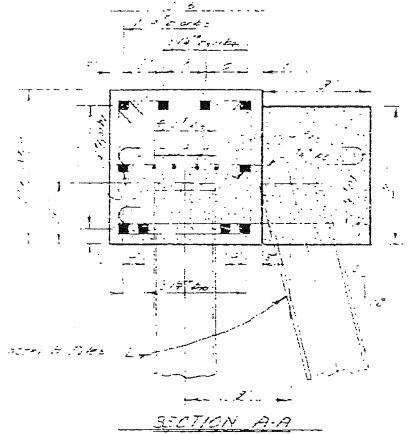


PLAN OF CAP

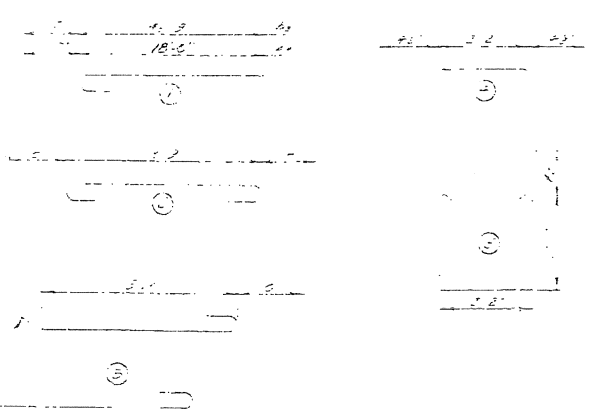


ELEVATION

METH. A WATER-PROOFING
 (28x20) = 1170 #
 (23x20) 2 = 92 #
 TOTAL = 1262 # = 1402 SY
 SEE END BENT NO 1 = 1272 SY
 TOTAL BOTH BENTS = 2674 SY



SECTION A-A



BAR TYPES

TOTAL BILL OF MATERIAL

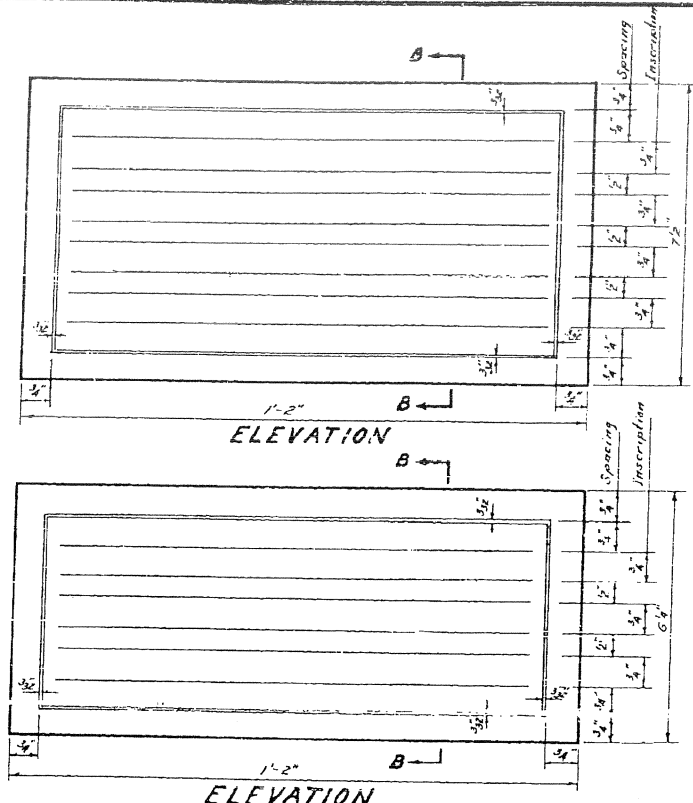
NO.	DESCRIPTION	AMOUNT	REMARKS
30	1/2" dia. steel rods	1170	
31	3/8" dia. steel rods	92	
32	1/4" dia. steel rods	1262	
33	1/2" dia. steel rods	1170	
34	3/8" dia. steel rods	92	
35	1/4" dia. steel rods	1262	
36	1/2" dia. steel rods	1170	
37	3/8" dia. steel rods	92	
38	1/4" dia. steel rods	1262	
39	1/2" dia. steel rods	1170	
40	3/8" dia. steel rods	92	
41	1/4" dia. steel rods	1262	
42	1/2" dia. steel rods	1170	
43	3/8" dia. steel rods	92	
44	1/4" dia. steel rods	1262	
45	1/2" dia. steel rods	1170	
46	3/8" dia. steel rods	92	
47	1/4" dia. steel rods	1262	
48	1/2" dia. steel rods	1170	
49	3/8" dia. steel rods	92	
50	1/4" dia. steel rods	1262	

PART 13
 PROJECT NO. 104
 WYOMING DAVIDSON COUNTY
 STATION: 794+73.35
 5 BENT NO 2

STATE OF NORTH CAROLINA
 STATE HIGHWAY AND
 PUBLIC WORKS COMMISSION
 STRUCTURE

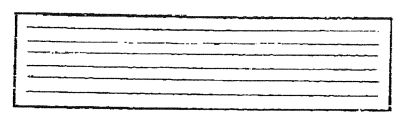
FEBRUARY 1955
 DRAWN BY: [Signature]
 CHECKED BY: [Signature]
 DATE: 2-1-55

SPECIAL
 DRAWN BY: [Signature]
 CHECKED BY: [Signature]
 DATE: 2-1-55



DAVIDSON COUNTY
STATE PROJECT 6734
FEDERAL AID
1953

DETAIL SHOWING CORRECT WORDING
NAME PLATE USING FOUR LINES



DETAIL SHOWING CORRECT WORDING
NAME PLATE USING THREE LINES

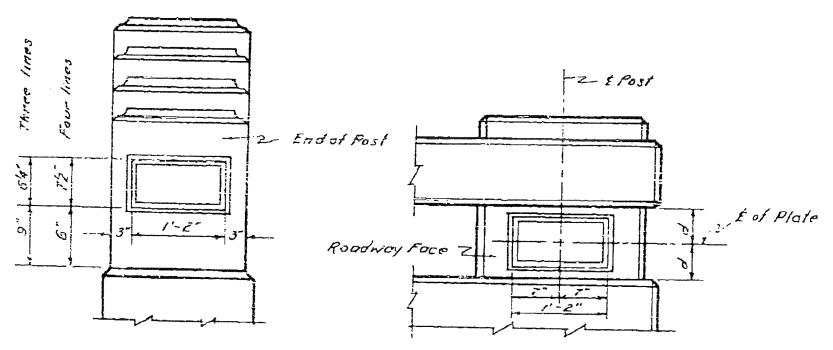
GENERAL NOTE

Two name plates are required for each bridge: one on each right hand end post approaching the bridge. See Location Detail.

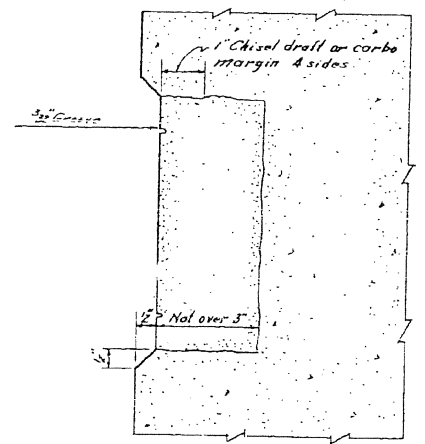
The name plates are to be made of granite. Granite shall be light gray, fine or medium grained, sound in quality and free from defects that would mar its appearance. Exposed face of plates to have a fine rubbed finish.

Lettering shall be sandblast sunk, 3/8" high, vertical, Modern Roman style. The wording shall be as shown in the "Detail Showing the Correct Wording."

The entire cost of the name plates, complete in place shall be included in the contract price bid for class "A" concrete.

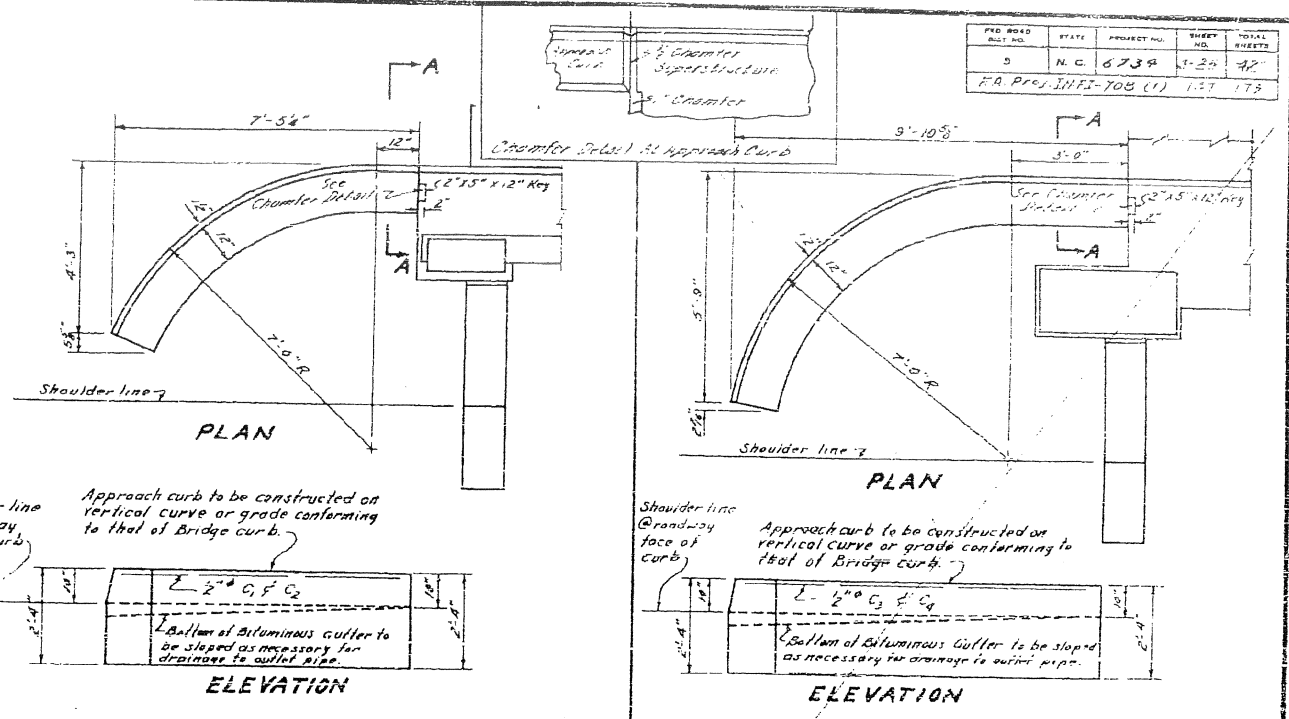


LOCATION DETAIL FOR NAME PLATES



SECTION B-B

**NAME
PLATES**



BILL OF MATERIAL FOR 4 CURBS

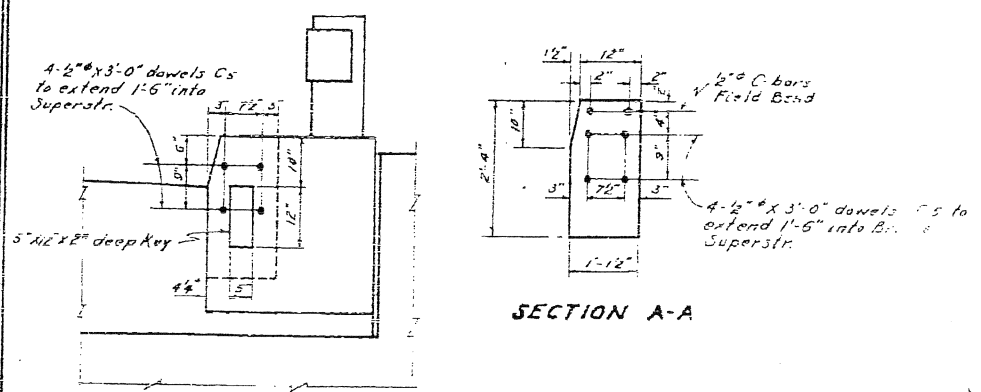
Bar No.	Size	Length	Weight
C ₁	2"	7'-9"	21
C ₂	4"	8'-6"	23
C ₃	1/2"	3'-0"	32
Reinforcing Steel, Lbs.			76
Class "A" Concrete, C.Y.			3.2

TO BE USED WITH 12" & 18" CURBS

BILL OF MATERIAL FOR 4 CURBS

Bar No.	Size	Length	Weight
C ₁	4"	11'-0"	29
C ₂	4"	12'-0"	32
C ₃	1/2"	3'-0"	32
Reinforcing Steel, Lbs.			93
Class "A" Concrete, C.Y.			4.6

TO BE USED WITH 2' & 3' WALKS



END ELEVATION SHOWING
KEY IN SUPERSTRUCTURE

**APPROACH
CURBS**

NOTE: The excavation for curbs will not be measured and paid for as a separate item. The entire cost for same is to be included in the unit price bid for Class "A" concrete.

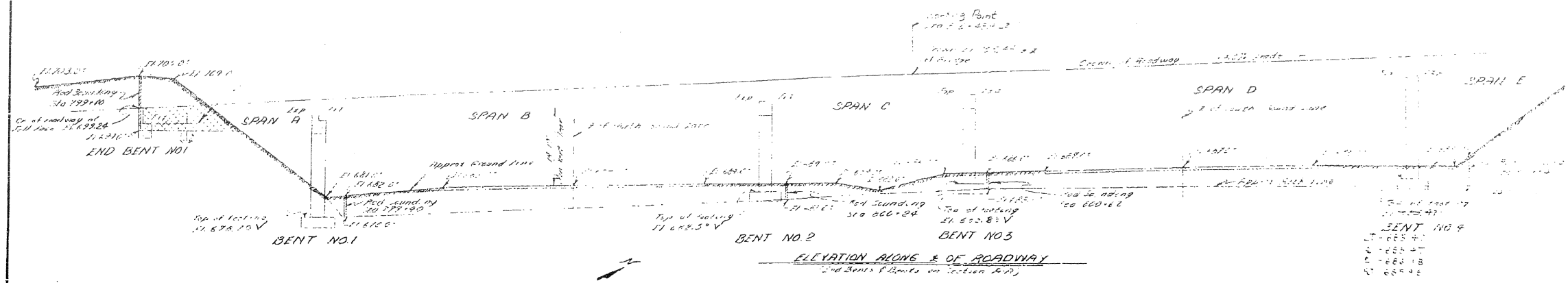
Drains and Bituminous surfacing of ends of Bridge to be furnished and placed by Roadway Contractor.

PROJECT NO. 6734
DAVIDSON COUNTY
STATION: 796+11.14 L
795+73.25 L
800+50.5 L

STATE OF NORTH CAROLINA
STATE HIGHWAY AND
PUBLIC WORKS COMMISSION
MADE BY
**STANDARD
APPROACH CURBS
AND
NAME PLATES**
SEPT. 1953

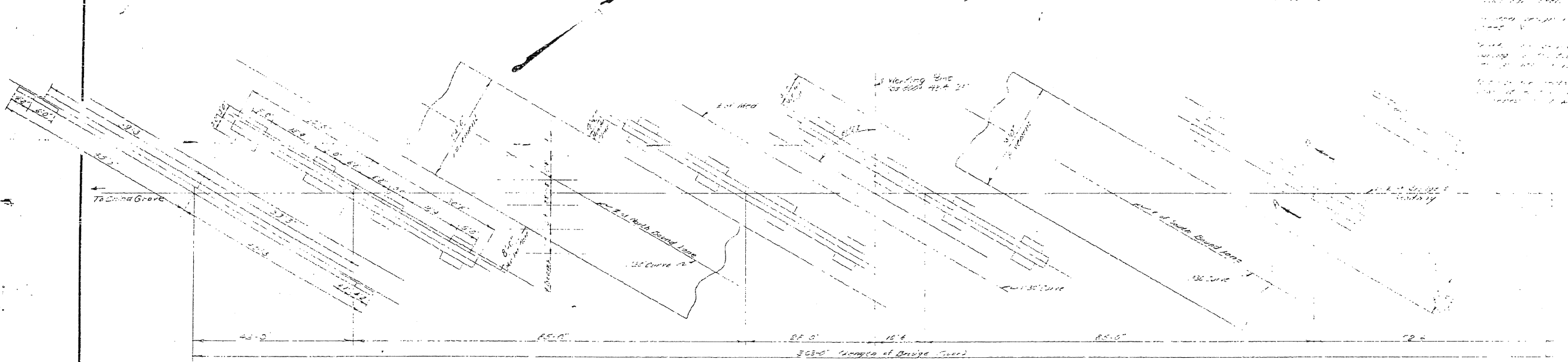
SPECIAL	APPROVED BY: <i>Clayton D. Smith</i>	DATE: Dec. 1953
	DESIGNED BY: <i>Clayton D. Smith</i>	DATE: Dec. 1953
STANDARD	DRAWN BY: <i>Clayton D. Smith</i>	DATE: Dec. 1953
	CHECKED BY: <i>Clayton D. Smith</i>	DATE: Dec. 1953

Note: Elevation of the reconstructed ground at End Bents
 Not to be for a distance of 150' from center line of
 roadway & work area 1/2 of roadway shall be measured
 and used for all purposes. From this measure, etc.,
 will also include a condition for the end bent caps

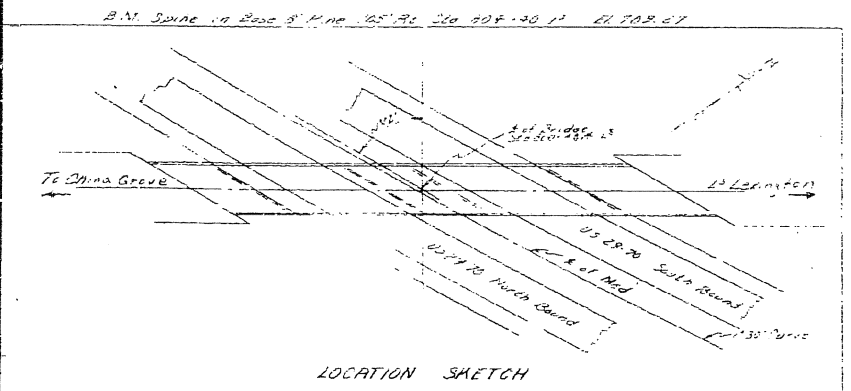


ELEVATION ALONG & OF ROADWAY
 (End Bents & Points on Section 4-7)

Required...
 1. 20' 00" 00"
 2. 20' 00" 00"
 3. 20' 00" 00"
 4. 20' 00" 00"
 5. 20' 00" 00"
 6. 20' 00" 00"
 7. 20' 00" 00"
 8. 20' 00" 00"
 9. 20' 00" 00"
 10. 20' 00" 00"



PLAN



LOCATION SKETCH

TOTAL BILL OF MATERIAL					
	Class A Concrete	Reinforcing Steel	Structural Steel	Grass	Other
Span A	11.7	1715	1715		1715
Span B & D	23.3	37500	37500		37500
Span C	23.5	6576	33555		33555
Span E	23.5	2141	43220		43220
End Bent No. 1	3755.2	5715			
Bent No. 2	3755.2	2559	561		
Bent No. 3	3755.2	2559	561		
Bent No. 4	3755.2	2559	561		
End Bent No. 2	3755.2	2559	561		
Approach Curb	3.2	76			
Totals	508.14	50814	1079	3465	

See Book No. 2; Pages 23-26

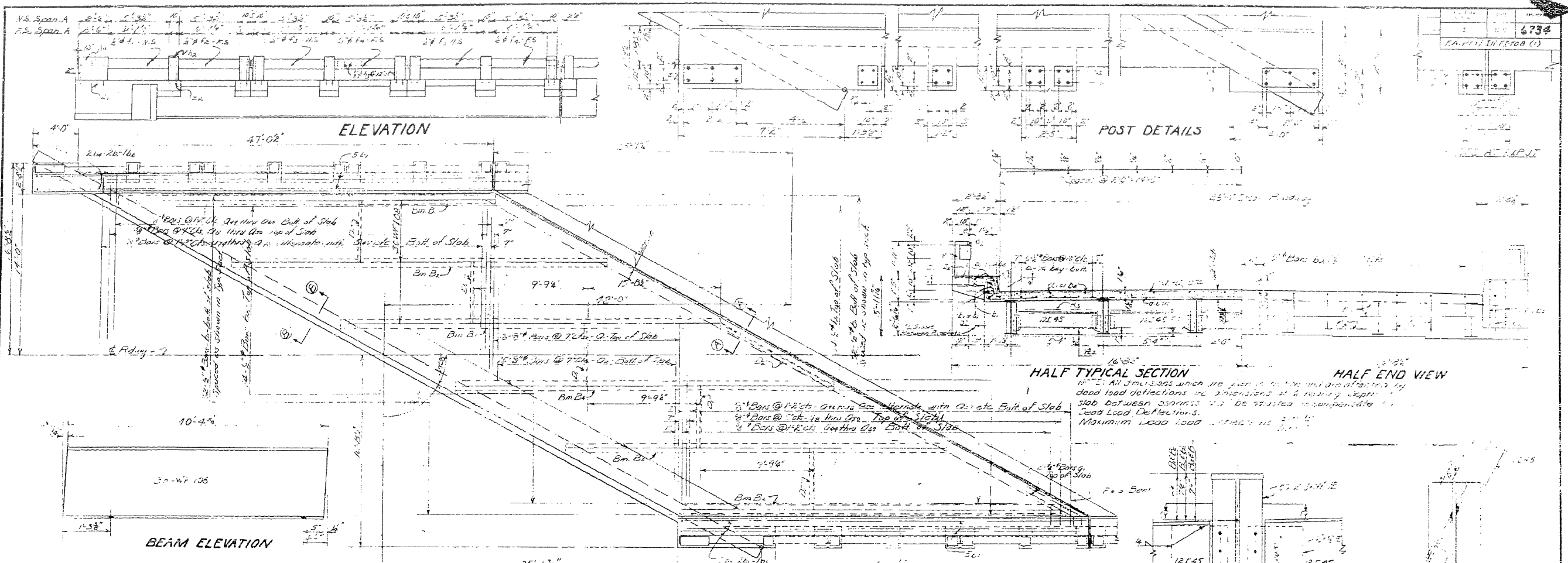
I hereby certify that the structure was built as shown on these plans.
 Date: _____ Signed: Res. Engr.

PROJECT NO. 2427
 COUNTY: DAVIDSON
 STATION: 6601+55.5

STATE OF NORTH CAROLINA
 STATE HIGHWAY AND PUBLIC WORKS COMMISSION
 GENERAL DRAWING
 FEBRUARY 1955

SPECIAL
 DESIGNED BY: [Signature]
 CHECKED BY: [Signature]
 DATE: 1955

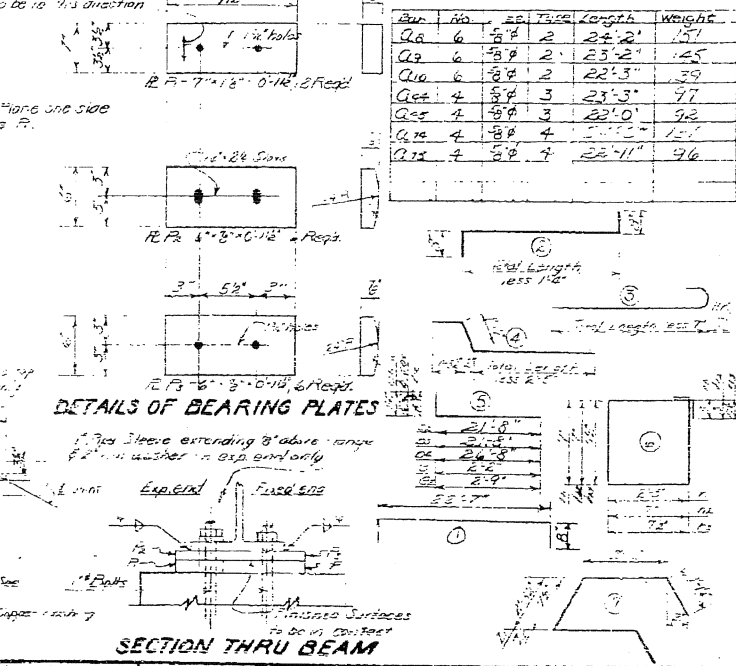
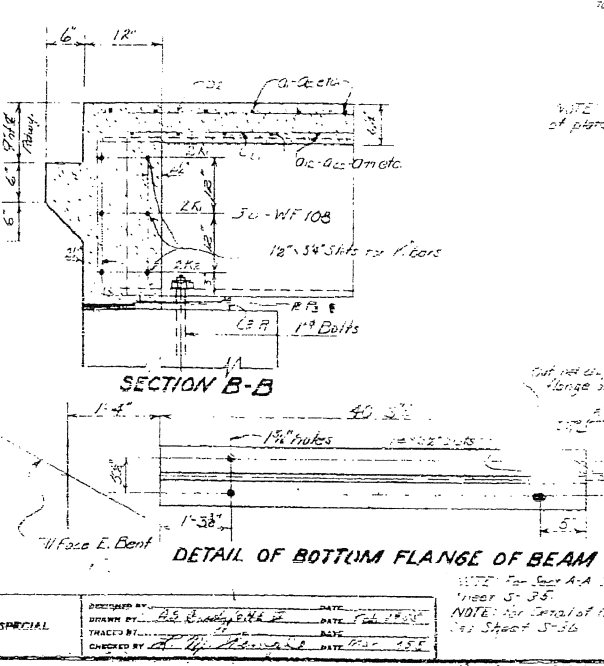
Revision No. 2: Change from 25' to 22' Spans



Bar	No.	Size	Length	Weight
Qa	6	3/8"	24'-2"	157
Qb	6	3/8"	23'-2"	145
Qc	6	3/8"	22'-3"	139
Qd	4	5/8"	23'-3"	97
Qe	4	5/8"	22'-0"	92
Qf	4	5/8"	22'-0"	92
Qg	4	5/8"	22'-11"	96

BILL OF MATERIALS FOR ONE SPAN AT 42'-0"

Bar	No.	Size	Length	Weight	Bar	No.	Size	Length	Weight
Qa	6	3/8"	24'-2"	157	Qa	6	3/8"	24'-2"	157
Qb	6	3/8"	23'-2"	145	Qb	6	3/8"	23'-2"	145
Qc	6	3/8"	22'-3"	139	Qc	6	3/8"	22'-3"	139
Qd	4	5/8"	23'-3"	97	Qd	4	5/8"	23'-3"	97
Qe	4	5/8"	22'-0"	92	Qe	4	5/8"	22'-0"	92
Qf	4	5/8"	22'-0"	92	Qf	4	5/8"	22'-0"	92
Qg	4	5/8"	22'-11"	96	Qg	4	5/8"	22'-11"	96



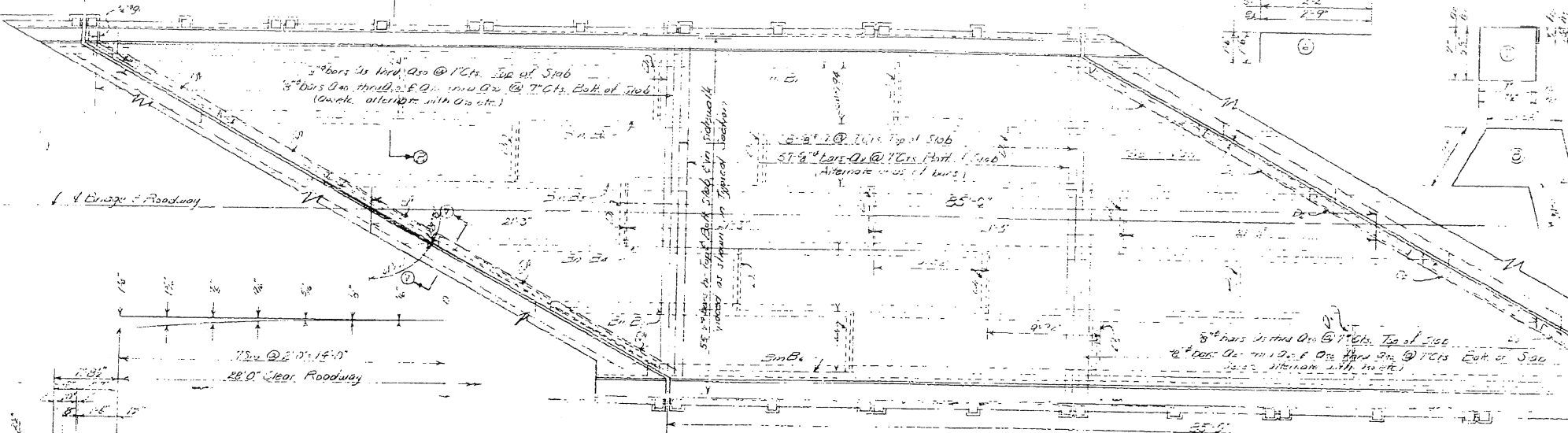
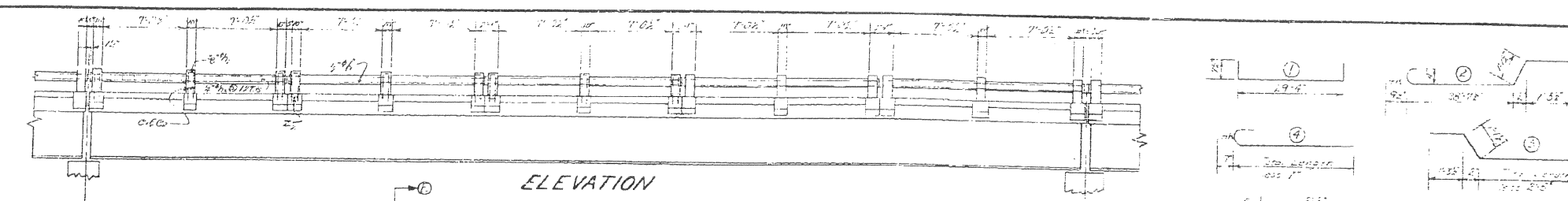
PROJECT NO. 6734
 ROWAN-DAVIDSON COUNTY
 STATION 800+48.4
 SPAN A
 STATE OF NORTH CAROLINA
 STATE HIGHWAY AND
 PUBLIC WORKS COMMISSION
 SUPERSTRUCTURE
 FEB. 1955

DESIGNED BY: R. S. BENTLEY, CIVIL ENGINEER
 CHECKED BY: A. W. BENTLEY, CIVIL ENGINEER
 DATE: FEB. 1955

Revised to show Bridge Deck P. 1 T-22-55 F.H.C.

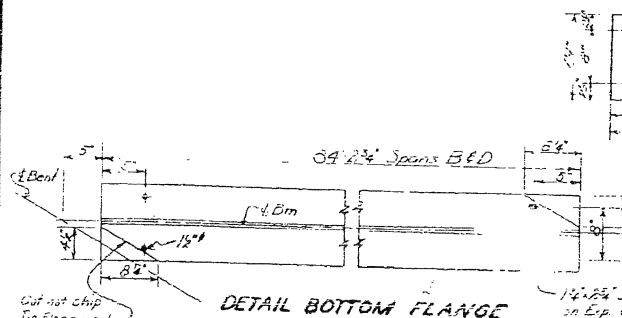
BILL OF MATERIALS FOR 2 SPANS @ 85'

NO.	QTY.	TYPE	LENGTH	WEIGHT	NO.	QTY.	TYPE	LENGTH	WEIGHT
1	1	1	30.7	3707	1	1	3	4.4	86
2	2	1	21.0	2185	2	2	3	5.0	63
3	1	1	3	1	3	4.1	57
4	1	1	4	1	3	5.1	54
5	1	1	5	1	3
6	1	1	6	1	3
7	1	1	7	1	3
8	1	1	8	1	3
9	1	1	9	1	3
10	1	1	10	1	3
11	1	1	11	1	3
12	1	1	12	1	3
13	1	1	13	1	3
14	1	1	14	1	3
15	1	1	15	1	3
16	1	1	16	1	3
17	1	1	17	1	3
18	1	1	18	1	3
19	1	1	19	1	3
20	1	1	20	1	3
21	1	1	21	1	3
22	1	1	22	1	3
23	1	1	23	1	3
24	1	1	24	1	3
25	1	1	25	1	3
26	1	1	26	1	3
27	1	1	27	1	3
28	1	1	28	1	3
29	1	1	29	1	3
30	1	1	30	1	3

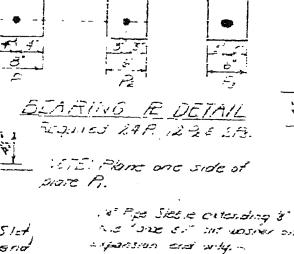


HALF TYPICAL SECTION

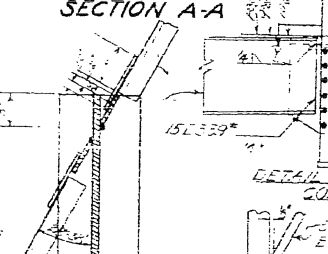
NOTE: All dimensions shown are in feet and inches and are affected by dead load deflections and are dimensions of bearing depth of slab between bearings shall be adjusted to compensate for dead load deflections and actual beam camber. Maximum Dead Load Deflection = 1/16" (These deflections include 1/2" in Int. to weight of beam.)



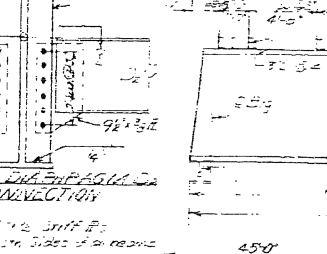
BEARING & DETAIL



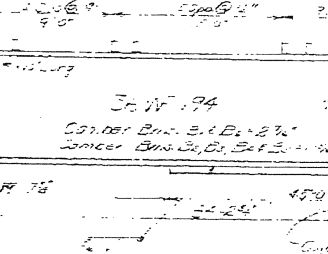
SECTION A-A



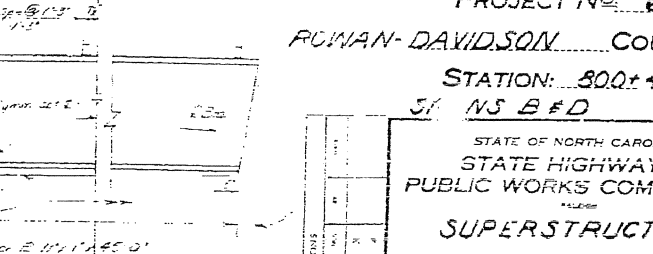
SECTION B-B



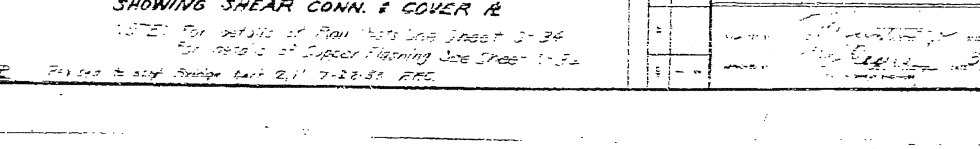
SECTION X-X



DETAIL DIAPHRAGM D, CONNECTION



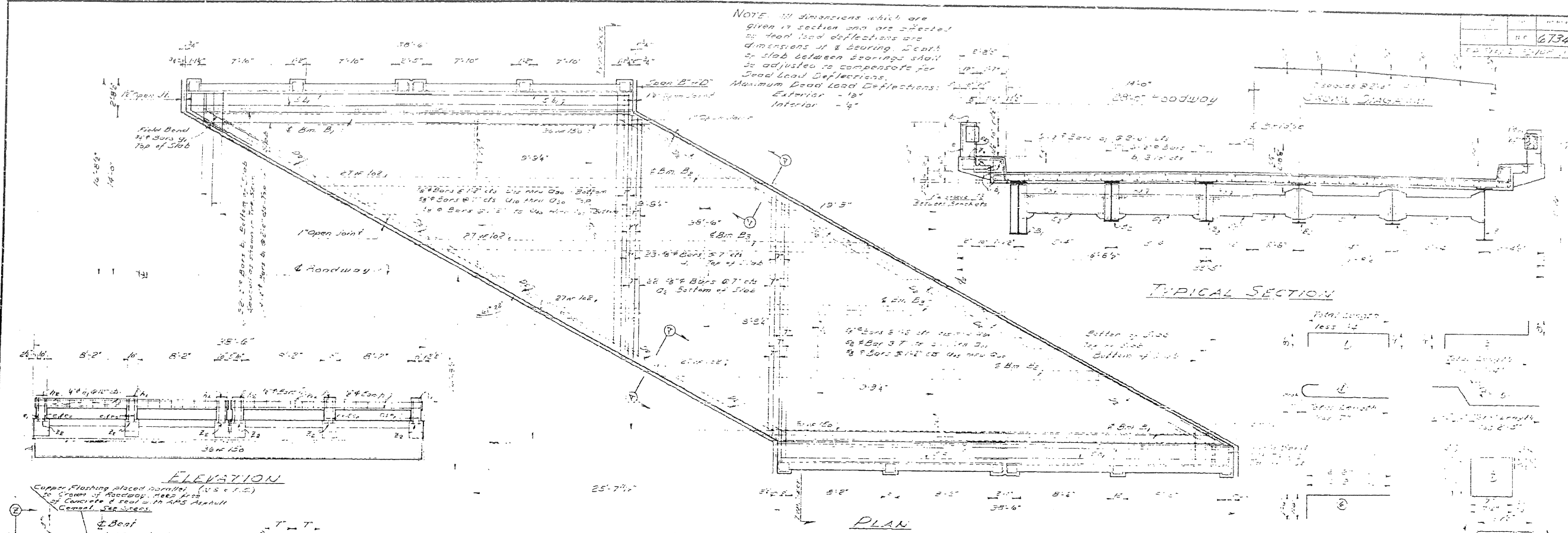
ELEVATION OF BEAM SHOWING SHEAR CONN. & COVER PLATE



DRAWN BY: *H. D. ...* DATE: 2-1-55
 CHECKED BY: *C. J. ...* DATE: FEB. 1955

PART II
 PROJECT NO. 6734
 ROWAN-DAVIDSON COUNTY
 STATION: 500+48.4
 SUPERSTRUCTURE
 FEB 1955

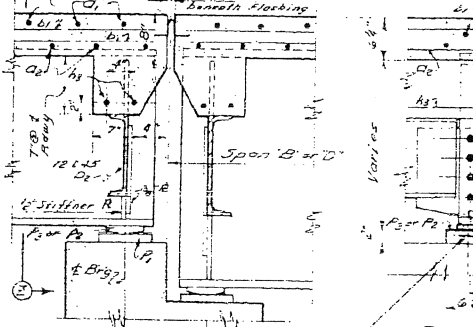
NOTE: All dimensions which are given in section and are affected by dead load deflections are to be adjusted to compensate for dead load deflections.
 Maximum Dead Load Deflections:
 Exterior - 1/4"
 Interior - 1/8"



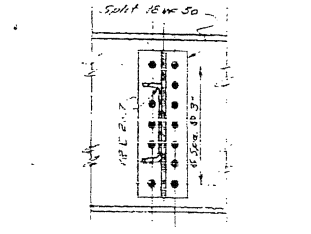
TYPICAL SECTION

PLAN

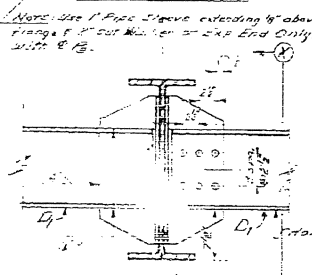
ELEVATION



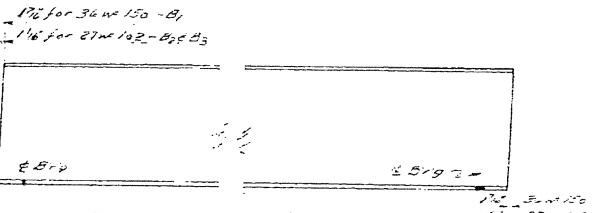
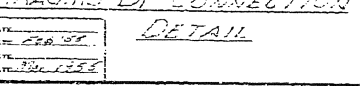
SECTION 'A-A'



SECTION 'Z-Z'

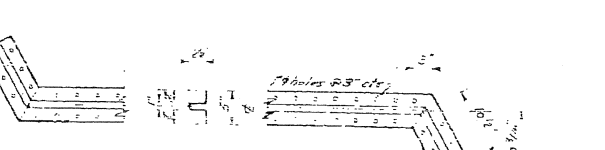


SECTION 'X-X'

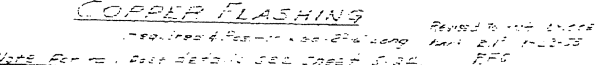


ELEVATION OF BEAMS

DETAIL OF BOTTOM FLANGE OF BEAMS



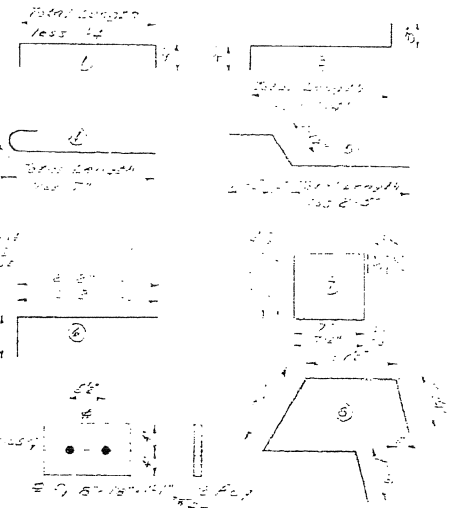
DETAIL OF DIAPHRAGM CONNECTION



NOTE: For Fixed & Expansion Ends see Gen. Dwg.

SILL OF MATERIALS OF ONE 38'-6" SPAN

Bar No	Size	Type	Length	Height	Bar No	Size	Type	Length	Height	Bar No	Size	Type	Length	Height
D1	35	3/8"	132	42	D11	4	3/8"	112	42	D21	4	3/8"	112	42
D2	22	3/8"	132	42	D12	6	3/8"	112	42	D22	6	3/8"	112	42
D3	6	3/8"	132	42	D13	6	3/8"	112	42	D23	6	3/8"	112	42
D4	6	3/8"	132	42	D14	6	3/8"	112	42	D24	6	3/8"	112	42
D5	6	3/8"	132	42	D15	6	3/8"	112	42	D25	6	3/8"	112	42
D6	6	3/8"	132	42	D16	6	3/8"	112	42	D26	6	3/8"	112	42
D7	6	3/8"	132	42	D17	6	3/8"	112	42	D27	6	3/8"	112	42
D8	6	3/8"	132	42	D18	6	3/8"	112	42	D28	6	3/8"	112	42
D9	6	3/8"	132	42	D19	6	3/8"	112	42	D29	6	3/8"	112	42
D10	6	3/8"	132	42	D20	6	3/8"	112	42	D30	6	3/8"	112	42
D11	6	3/8"	132	42	D21	6	3/8"	112	42	D31	6	3/8"	112	42
D12	6	3/8"	132	42	D22	6	3/8"	112	42	D32	6	3/8"	112	42
D13	6	3/8"	132	42	D23	6	3/8"	112	42	D33	6	3/8"	112	42
D14	6	3/8"	132	42	D24	6	3/8"	112	42	D34	6	3/8"	112	42
D15	6	3/8"	132	42	D25	6	3/8"	112	42	D35	6	3/8"	112	42
D16	6	3/8"	132	42	D26	6	3/8"	112	42	D36	6	3/8"	112	42
D17	6	3/8"	132	42	D27	6	3/8"	112	42	D37	6	3/8"	112	42
D18	6	3/8"	132	42	D28	6	3/8"	112	42	D38	6	3/8"	112	42
D19	6	3/8"	132	42	D29	6	3/8"	112	42	D39	6	3/8"	112	42
D20	6	3/8"	132	42	D30	6	3/8"	112	42	D40	6	3/8"	112	42



DETAILS OF BEARING

PROJECT NO. 6734

HARRIS, DAVIDSON COUNTY

STATION: 220+00

STATE OF NORTH CAROLINA
 STATE HIGHWAY AND
 PUBLIC WORKS COMMISSION

SUPERSTRUCTURE

APPROVED: FEBRUARY 1955

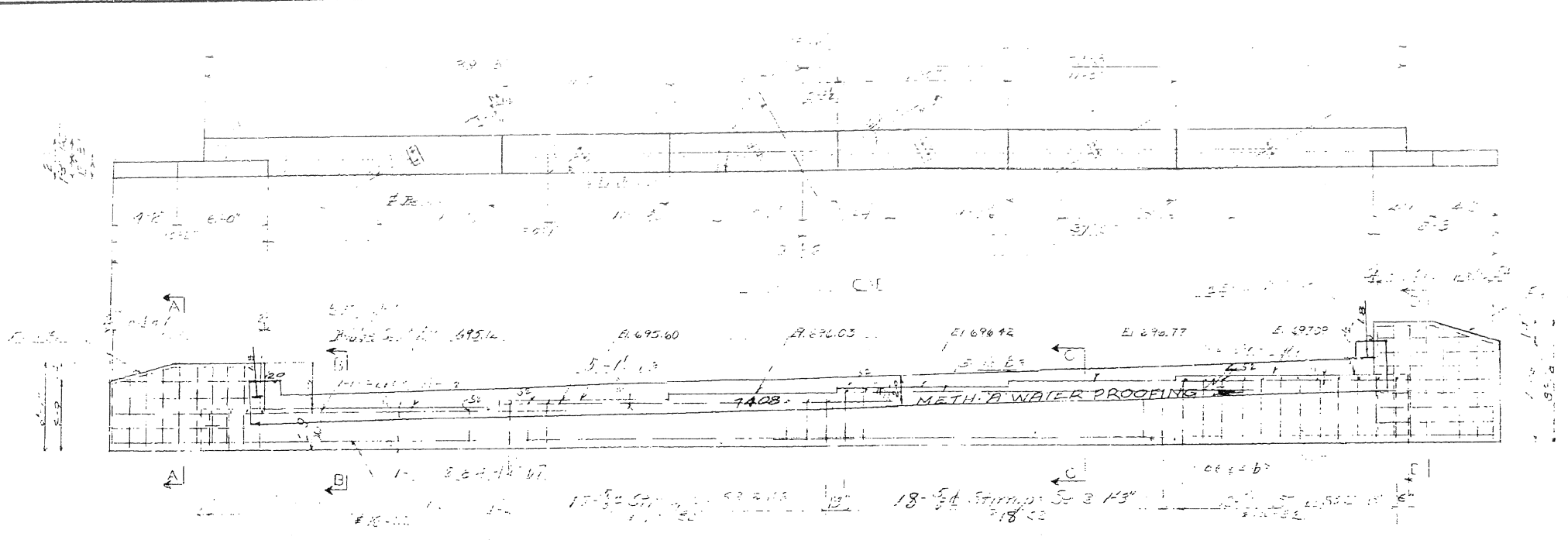
DRAWN BY: Mitchell A. Gandy DATE: SEP 27 1955
 CHECKED BY: J. H. Sample DATE: OCT 10 1955

REVISIONS: 1. 10/10/55
 2. 11/10/55

COPPER FLASHING
 REQUIRED TO BE 3" WIDE AND 1/2" THICK

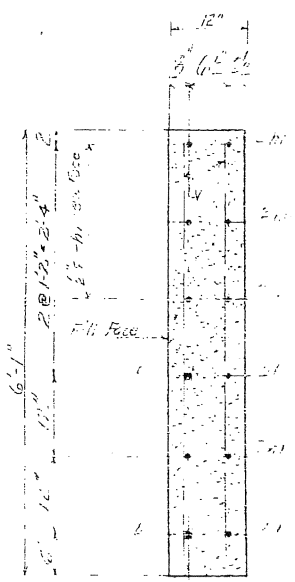
REVISIONS: 1. 10/10/55
 2. 11/10/55

NO.	DATE	BY
1	HC	6734
FA/PA 100-108 (1)		

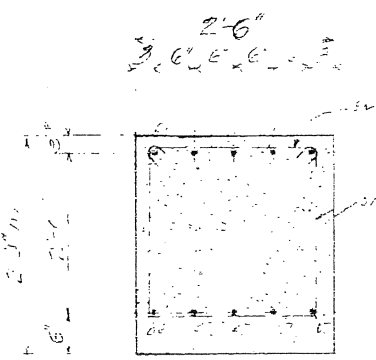


NO.	DESCRIPTION	AMOUNT
1	CONCRETE	1715.65 YDS
2	REINFORCEMENT	154.35 YDS
3	WATER PROOFING	1715.65 YDS
4	FORMWORK	1715.65 YDS
5	BRICK	1715.65 YDS
6	PAINT	1715.65 YDS
7	PLASTER	1715.65 YDS
8	INSULATION	1715.65 YDS
9	GLASS	1715.65 YDS
10	DOORS	1715.65 YDS
11	WINDOWS	1715.65 YDS
12	ROOFING	1715.65 YDS
13	CEILING	1715.65 YDS
14	FLOORING	1715.65 YDS
15	MECHANICAL	1715.65 YDS
16	ELECTRICAL	1715.65 YDS
17	LANDSCAPING	1715.65 YDS
18	UTILITIES	1715.65 YDS
19	CONCRETE	1715.65 YDS
20	REINFORCEMENT	154.35 YDS
21	WATER PROOFING	1715.65 YDS
22	FORMWORK	1715.65 YDS
23	BRICK	1715.65 YDS
24	PAINT	1715.65 YDS
25	PLASTER	1715.65 YDS
26	INSULATION	1715.65 YDS
27	GLASS	1715.65 YDS
28	DOORS	1715.65 YDS
29	WINDOWS	1715.65 YDS
30	ROOFING	1715.65 YDS
31	CEILING	1715.65 YDS
32	FLOORING	1715.65 YDS
33	MECHANICAL	1715.65 YDS
34	ELECTRICAL	1715.65 YDS
35	LANDSCAPING	1715.65 YDS
36	UTILITIES	1715.65 YDS
37	CONCRETE	1715.65 YDS
38	REINFORCEMENT	154.35 YDS
39	WATER PROOFING	1715.65 YDS
40	FORMWORK	1715.65 YDS
41	BRICK	1715.65 YDS
42	PAINT	1715.65 YDS
43	PLASTER	1715.65 YDS
44	INSULATION	1715.65 YDS
45	GLASS	1715.65 YDS
46	DOORS	1715.65 YDS
47	WINDOWS	1715.65 YDS
48	ROOFING	1715.65 YDS
49	CEILING	1715.65 YDS
50	FLOORING	1715.65 YDS
51	MECHANICAL	1715.65 YDS
52	ELECTRICAL	1715.65 YDS
53	LANDSCAPING	1715.65 YDS
54	UTILITIES	1715.65 YDS
55	CONCRETE	1715.65 YDS
56	REINFORCEMENT	154.35 YDS
57	WATER PROOFING	1715.65 YDS
58	FORMWORK	1715.65 YDS
59	BRICK	1715.65 YDS
60	PAINT	1715.65 YDS
61	PLASTER	1715.65 YDS
62	INSULATION	1715.65 YDS
63	GLASS	1715.65 YDS
64	DOORS	1715.65 YDS
65	WINDOWS	1715.65 YDS
66	ROOFING	1715.65 YDS
67	CEILING	1715.65 YDS
68	FLOORING	1715.65 YDS
69	MECHANICAL	1715.65 YDS
70	ELECTRICAL	1715.65 YDS
71	LANDSCAPING	1715.65 YDS
72	UTILITIES	1715.65 YDS
73	CONCRETE	1715.65 YDS
74	REINFORCEMENT	154.35 YDS
75	WATER PROOFING	1715.65 YDS
76	FORMWORK	1715.65 YDS
77	BRICK	1715.65 YDS
78	PAINT	1715.65 YDS
79	PLASTER	1715.65 YDS
80	INSULATION	1715.65 YDS
81	GLASS	1715.65 YDS
82	DOORS	1715.65 YDS
83	WINDOWS	1715.65 YDS
84	ROOFING	1715.65 YDS
85	CEILING	1715.65 YDS
86	FLOORING	1715.65 YDS
87	MECHANICAL	1715.65 YDS
88	ELECTRICAL	1715.65 YDS
89	LANDSCAPING	1715.65 YDS
90	UTILITIES	1715.65 YDS
91	CONCRETE	1715.65 YDS
92	REINFORCEMENT	154.35 YDS
93	WATER PROOFING	1715.65 YDS
94	FORMWORK	1715.65 YDS
95	BRICK	1715.65 YDS
96	PAINT	1715.65 YDS
97	PLASTER	1715.65 YDS
98	INSULATION	1715.65 YDS
99	GLASS	1715.65 YDS
100	DOORS	1715.65 YDS

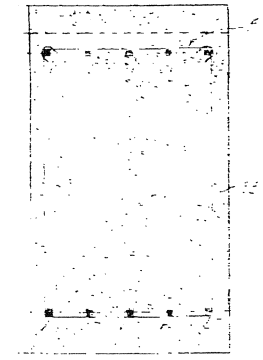
METH-A WATER-PROOFING
 1408 X 80 = 112,640
 20 X 18 = 360
 20 X 18 = 360
 TOTAL = 115,360



SECTION A-A



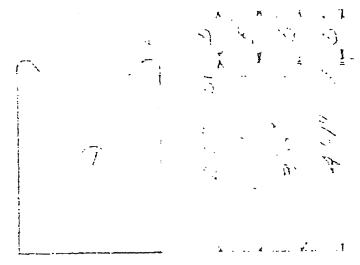
SECTION B-B



SECTION C-C



SECTION D-D



FOR DETAILS
 See drawings and specifications

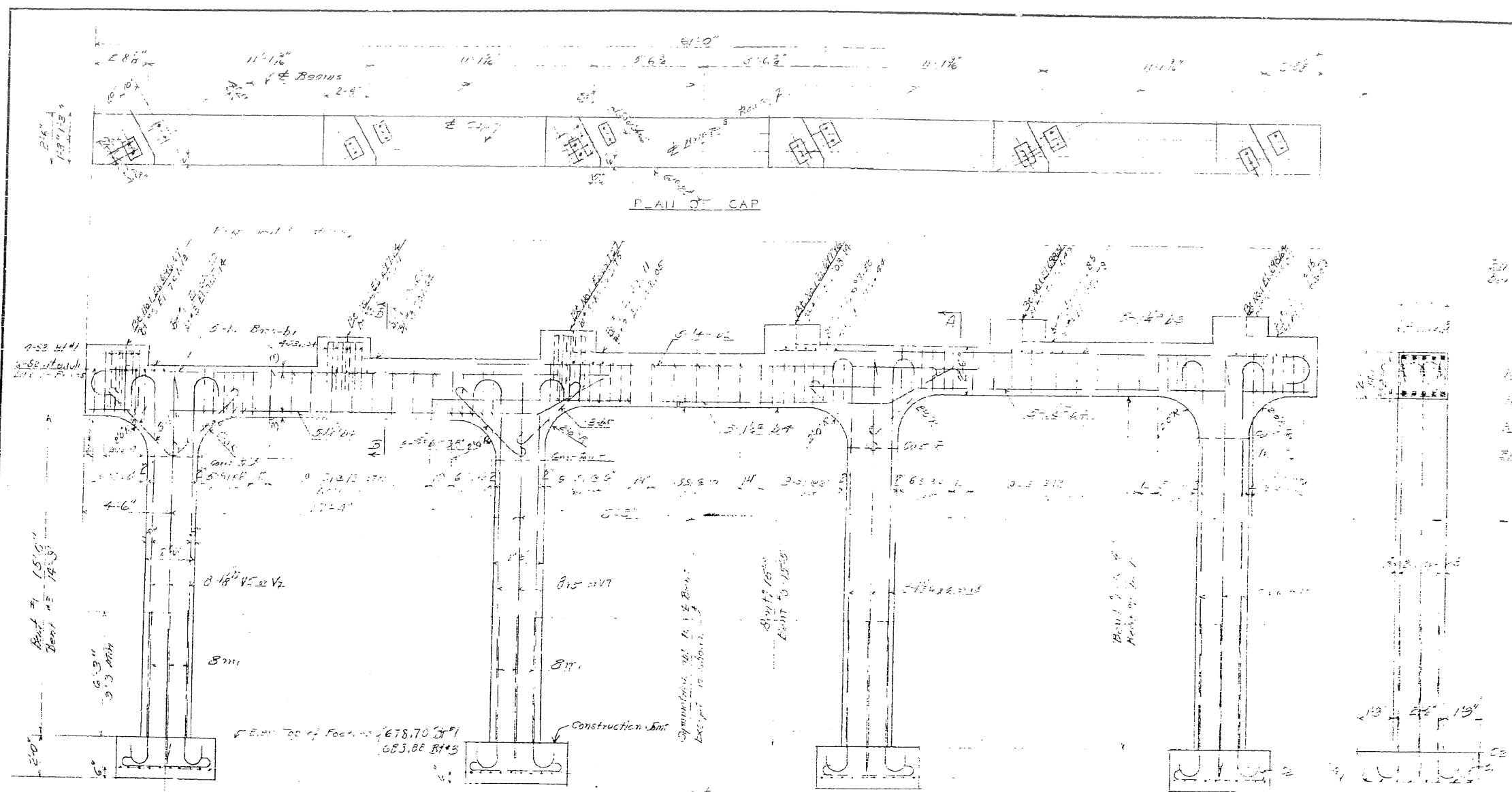
PART B
 PROJECT NO. 6734
 COUNTY
 STATION: EQ. 454.2

STATE OF NORTH CAROLINA STATE HIGHWAY AND PUBLIC WORKS COMMISSION	
DATE: 1955	
DESIGNED BY: J. H. ...	SCALE: 1/4" = 1'-0"
DRAWN BY: J. H. ...	DATE: 1955
CHECKED BY: J. H. ...	DATE: 1955

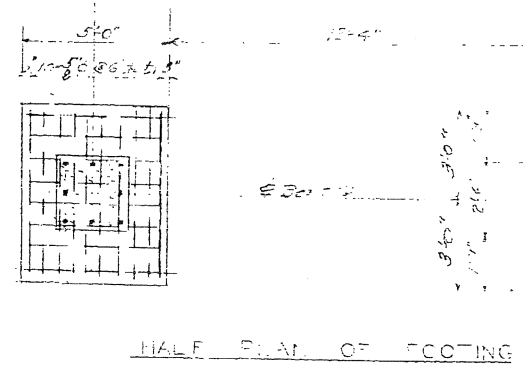
SPECIAL
 DRAWN BY: J. H. ...
 CHECKED BY: J. H. ...
 DATE: 1955

REVISION NO. 1 TO BE MADE IN THE DRAWING BOOK AND IN LOWER SECTIONS ACCORDING TO THE REVISIONS IN THIS SHEET AND IN THE REVISIONS IN THE SPECIFICATIONS.

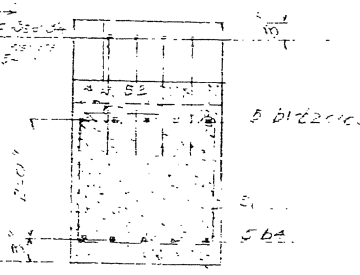
REVISED NO.	DATE	REVISION
3	11-17-55	6734
FA.Plan. 2. 0-7-55 (C)		



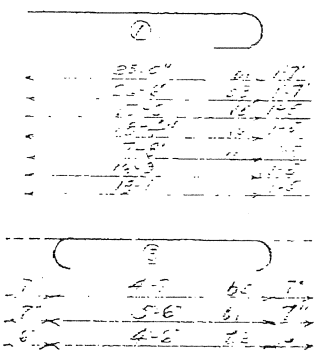
NO.	DESCRIPTION	AMOUNT	UNIT	TOTAL
1	Concrete	1733	cu yd	1733
2	Reinforcing Steel	117	tons	117
3	Formwork	573	sq ft	573
4	Other	70	sq ft	70
5	Other	76	sq ft	76
6	Other	274	sq ft	274
7	Other	117	sq ft	117
8	Other	125	sq ft	125
9	Other	125	sq ft	125
10	Other	125	sq ft	125
11	Other	125	sq ft	125
12	Other	125	sq ft	125
13	Other	125	sq ft	125
14	Other	125	sq ft	125
15	Other	125	sq ft	125
16	Other	125	sq ft	125
17	Other	125	sq ft	125
18	Other	125	sq ft	125
19	Other	125	sq ft	125
20	Other	125	sq ft	125
21	Other	125	sq ft	125
22	Other	125	sq ft	125
23	Other	125	sq ft	125
24	Other	125	sq ft	125
25	Other	125	sq ft	125
26	Other	125	sq ft	125
27	Other	125	sq ft	125
28	Other	125	sq ft	125
29	Other	125	sq ft	125
30	Other	125	sq ft	125
31	Other	125	sq ft	125
32	Other	125	sq ft	125
33	Other	125	sq ft	125
34	Other	125	sq ft	125
35	Other	125	sq ft	125
36	Other	125	sq ft	125
37	Other	125	sq ft	125
38	Other	125	sq ft	125
39	Other	125	sq ft	125
40	Other	125	sq ft	125
41	Other	125	sq ft	125
42	Other	125	sq ft	125
43	Other	125	sq ft	125
44	Other	125	sq ft	125
45	Other	125	sq ft	125
46	Other	125	sq ft	125
47	Other	125	sq ft	125
48	Other	125	sq ft	125
49	Other	125	sq ft	125
50	Other	125	sq ft	125
51	Other	125	sq ft	125
52	Other	125	sq ft	125
53	Other	125	sq ft	125
54	Other	125	sq ft	125
55	Other	125	sq ft	125
56	Other	125	sq ft	125
57	Other	125	sq ft	125
58	Other	125	sq ft	125
59	Other	125	sq ft	125
60	Other	125	sq ft	125
61	Other	125	sq ft	125
62	Other	125	sq ft	125
63	Other	125	sq ft	125
64	Other	125	sq ft	125
65	Other	125	sq ft	125
66	Other	125	sq ft	125
67	Other	125	sq ft	125
68	Other	125	sq ft	125
69	Other	125	sq ft	125
70	Other	125	sq ft	125
71	Other	125	sq ft	125
72	Other	125	sq ft	125
73	Other	125	sq ft	125
74	Other	125	sq ft	125
75	Other	125	sq ft	125
76	Other	125	sq ft	125
77	Other	125	sq ft	125
78	Other	125	sq ft	125
79	Other	125	sq ft	125
80	Other	125	sq ft	125
81	Other	125	sq ft	125
82	Other	125	sq ft	125
83	Other	125	sq ft	125
84	Other	125	sq ft	125
85	Other	125	sq ft	125
86	Other	125	sq ft	125
87	Other	125	sq ft	125
88	Other	125	sq ft	125
89	Other	125	sq ft	125
90	Other	125	sq ft	125
91	Other	125	sq ft	125
92	Other	125	sq ft	125
93	Other	125	sq ft	125
94	Other	125	sq ft	125
95	Other	125	sq ft	125
96	Other	125	sq ft	125
97	Other	125	sq ft	125
98	Other	125	sq ft	125
99	Other	125	sq ft	125
100	Other	125	sq ft	125



ELEVATION
BEAM NO. 1 OR 10 5



SECTION B-B



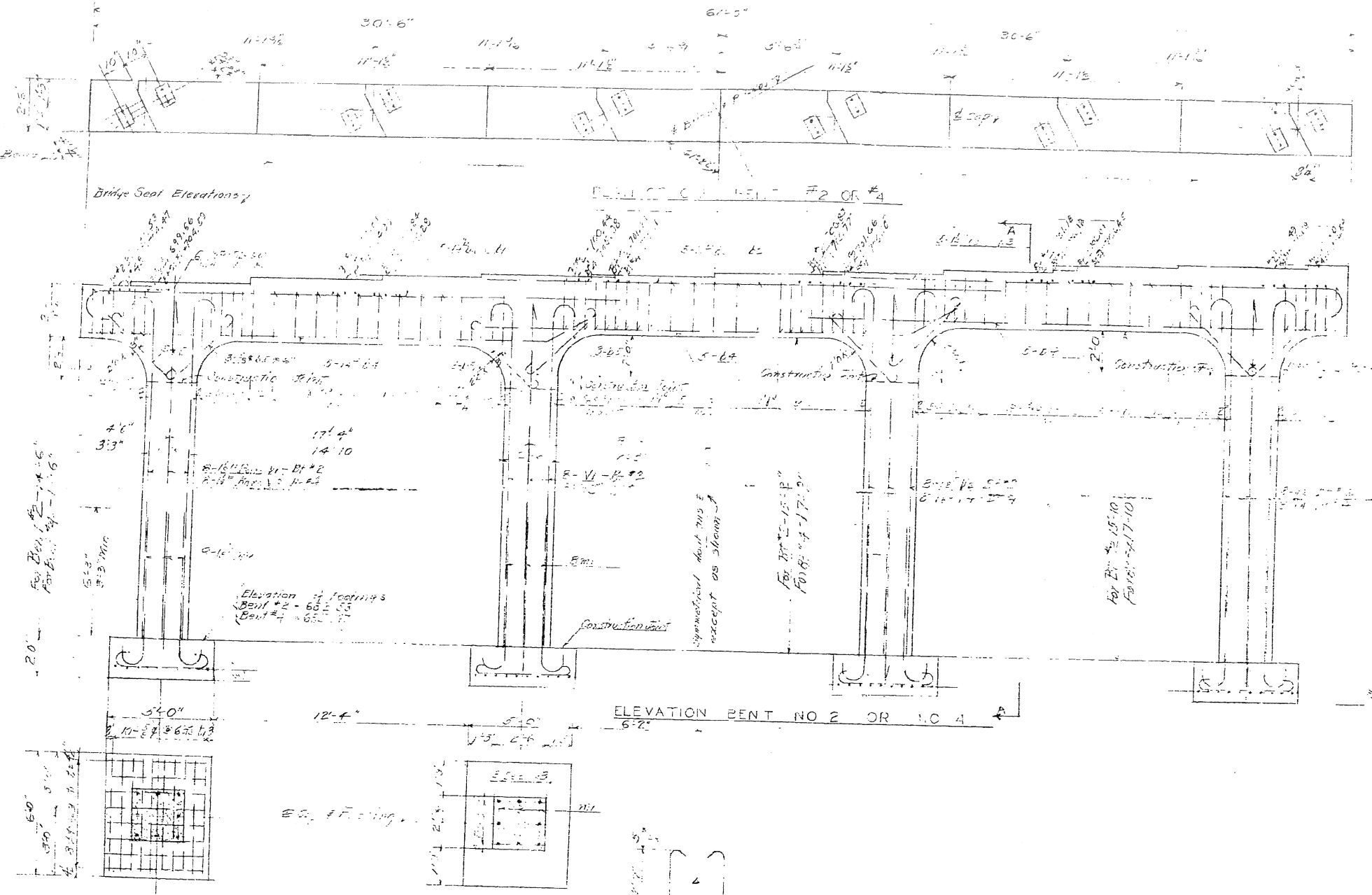
BAR TYPES

Reinforcing steel to be used in this structure shall be of the type specified in the contract and shall conform to the specifications of the American Institute of Steel Construction, Inc., and shall be tested according to the specifications of the American Institute of Steel Construction, Inc.

PART 13
PROJECT NO. 6734
COUNTY
STATION: 200+48.4
REVISED 11-17-55

STATE OF NORTH CAROLINA STATE HIGHWAY AND PUBLIC WORKS COMMISSION	
SUBSTRUCTURE	
FEB 1955	
DESIGNED BY	DATE
DRAWN BY	DATE
CHECKED BY	DATE
APPROVED BY	DATE

SPECIAL
DESIGNED BY: [Signature]
DRAFTSMAN: [Signature]
CHECKED BY: [Signature]
DATE: 11-17-55



FOOTING		BENT	
NO.	AREA	NO.	AREA
1	12.00	1	12.00
2	12.00	2	12.00
3	12.00	3	12.00
4	12.00	4	12.00
5	12.00	5	12.00
6	12.00	6	12.00
7	12.00	7	12.00
8	12.00	8	12.00
9	12.00	9	12.00
10	12.00	10	12.00
11	12.00	11	12.00
12	12.00	12	12.00
13	12.00	13	12.00
14	12.00	14	12.00
15	12.00	15	12.00
16	12.00	16	12.00
17	12.00	17	12.00
18	12.00	18	12.00
19	12.00	19	12.00
20	12.00	20	12.00
21	12.00	21	12.00
22	12.00	22	12.00
23	12.00	23	12.00
24	12.00	24	12.00
25	12.00	25	12.00
26	12.00	26	12.00
27	12.00	27	12.00
28	12.00	28	12.00
29	12.00	29	12.00
30	12.00	30	12.00
31	12.00	31	12.00
32	12.00	32	12.00
33	12.00	33	12.00
34	12.00	34	12.00
35	12.00	35	12.00
36	12.00	36	12.00
37	12.00	37	12.00
38	12.00	38	12.00
39	12.00	39	12.00
40	12.00	40	12.00
41	12.00	41	12.00
42	12.00	42	12.00
43	12.00	43	12.00
44	12.00	44	12.00
45	12.00	45	12.00
46	12.00	46	12.00
47	12.00	47	12.00
48	12.00	48	12.00
49	12.00	49	12.00
50	12.00	50	12.00
51	12.00	51	12.00
52	12.00	52	12.00
53	12.00	53	12.00
54	12.00	54	12.00
55	12.00	55	12.00
56	12.00	56	12.00
57	12.00	57	12.00
58	12.00	58	12.00
59	12.00	59	12.00
60	12.00	60	12.00
61	12.00	61	12.00
62	12.00	62	12.00
63	12.00	63	12.00
64	12.00	64	12.00
65	12.00	65	12.00
66	12.00	66	12.00
67	12.00	67	12.00
68	12.00	68	12.00
69	12.00	69	12.00
70	12.00	70	12.00
71	12.00	71	12.00
72	12.00	72	12.00
73	12.00	73	12.00
74	12.00	74	12.00
75	12.00	75	12.00
76	12.00	76	12.00
77	12.00	77	12.00
78	12.00	78	12.00
79	12.00	79	12.00
80	12.00	80	12.00
81	12.00	81	12.00
82	12.00	82	12.00
83	12.00	83	12.00
84	12.00	84	12.00
85	12.00	85	12.00
86	12.00	86	12.00
87	12.00	87	12.00
88	12.00	88	12.00
89	12.00	89	12.00
90	12.00	90	12.00
91	12.00	91	12.00
92	12.00	92	12.00
93	12.00	93	12.00
94	12.00	94	12.00
95	12.00	95	12.00
96	12.00	96	12.00
97	12.00	97	12.00
98	12.00	98	12.00
99	12.00	99	12.00
100	12.00	100	12.00

PART B
PROJECT NO. 3734
HONOLULU COUNTY
STATION: 270+48.4
BENTS NO 2 AND 4

STATE OF NORTH CAROLINA
STATE HIGHWAY AND
PUBLIC WORKS COMMISSION
FEB 1955

DESIGNED BY: [Signature]
CHECKED BY: [Signature]

DESIGNED BY: [Signature]
CHECKED BY: [Signature]
DATE: 6-5-54

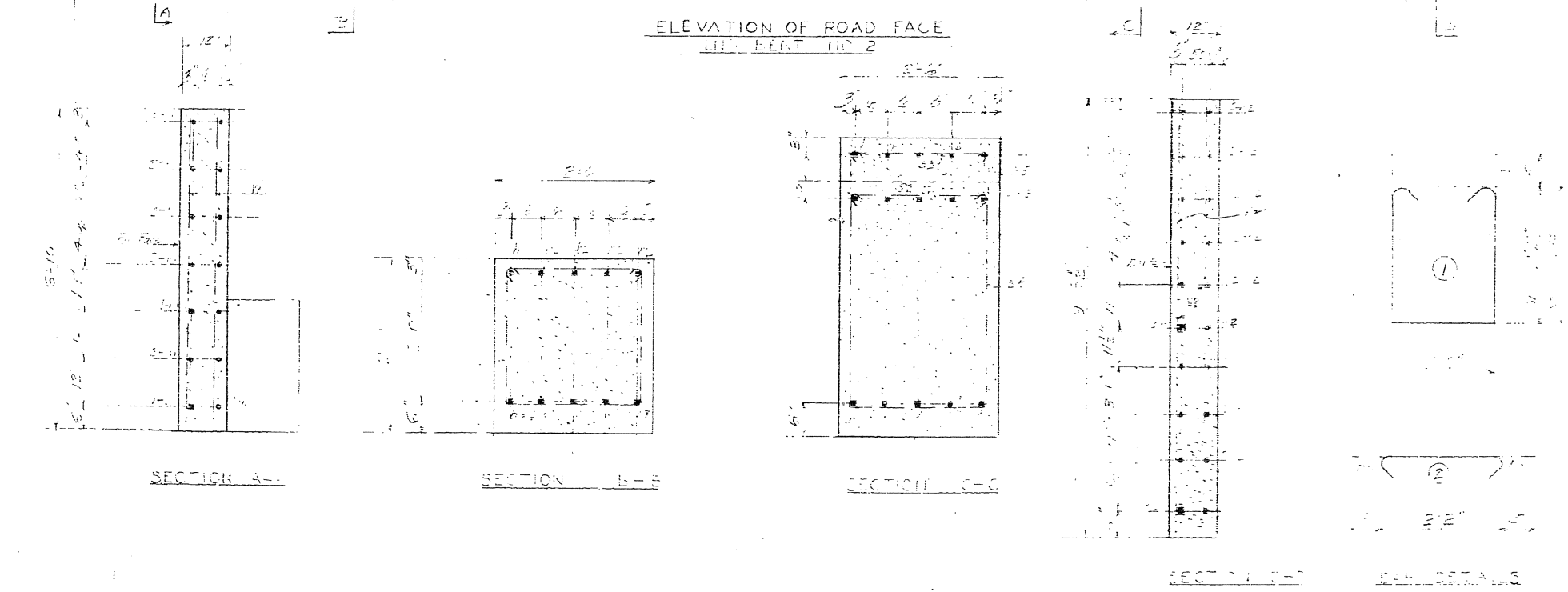
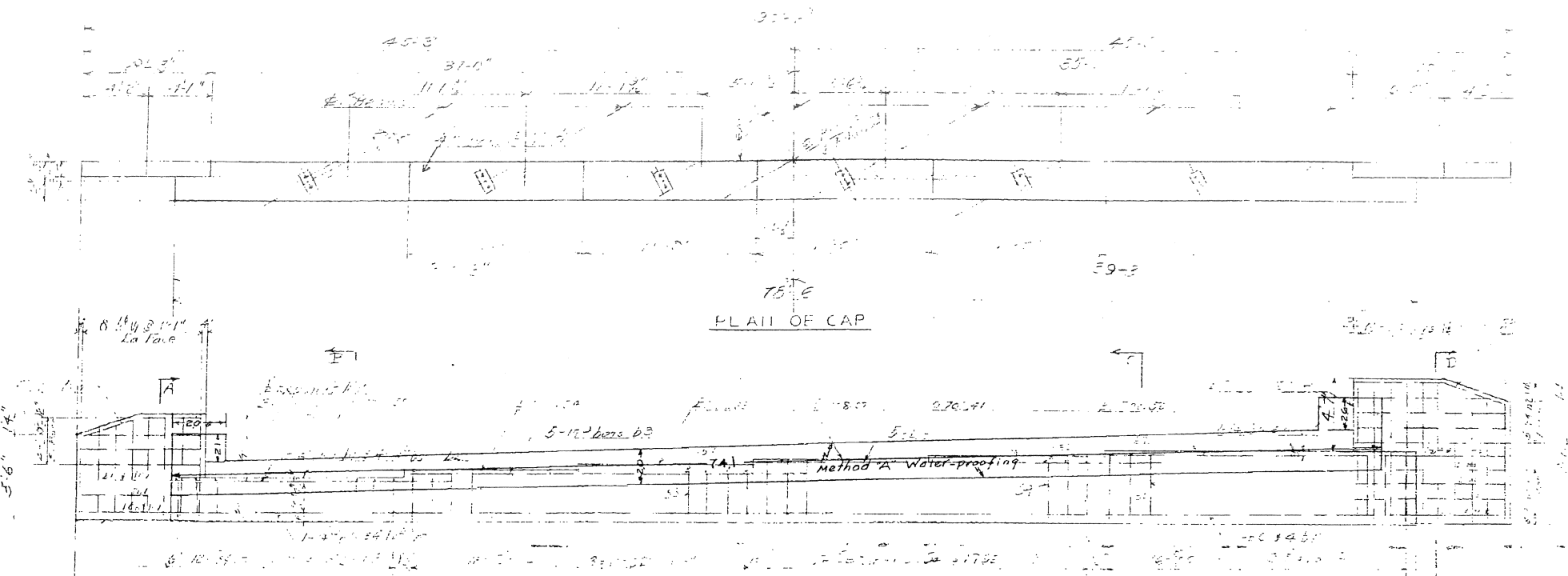
Refer to left Bridge Deck Elevation and change Elevation accordingly.

NO. OF SHEETS	NO.	DATE
3	734	7-21-27

SA. Proj. No. 6734

BILL OF MATERIAL		QUANTITY	
20 X 741	1825	1825	1825
21 X 20	42	42	42
26 X 20	52	52	52
Bent Total		1576	1755 yds.

Method "A" Water-Proofing
 20 X 741 = 1825 Sq. Ft.
 21 X 20 = 42 " "
 26 X 20 = 52 " "
 Bent Total = 1576 = 1755 yds.

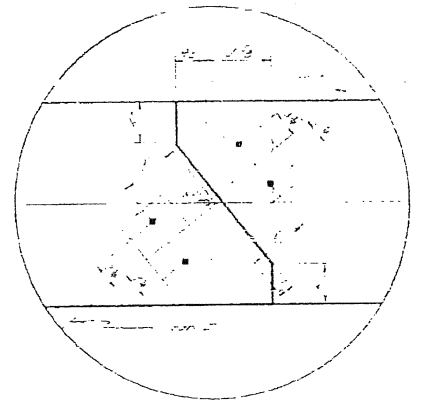
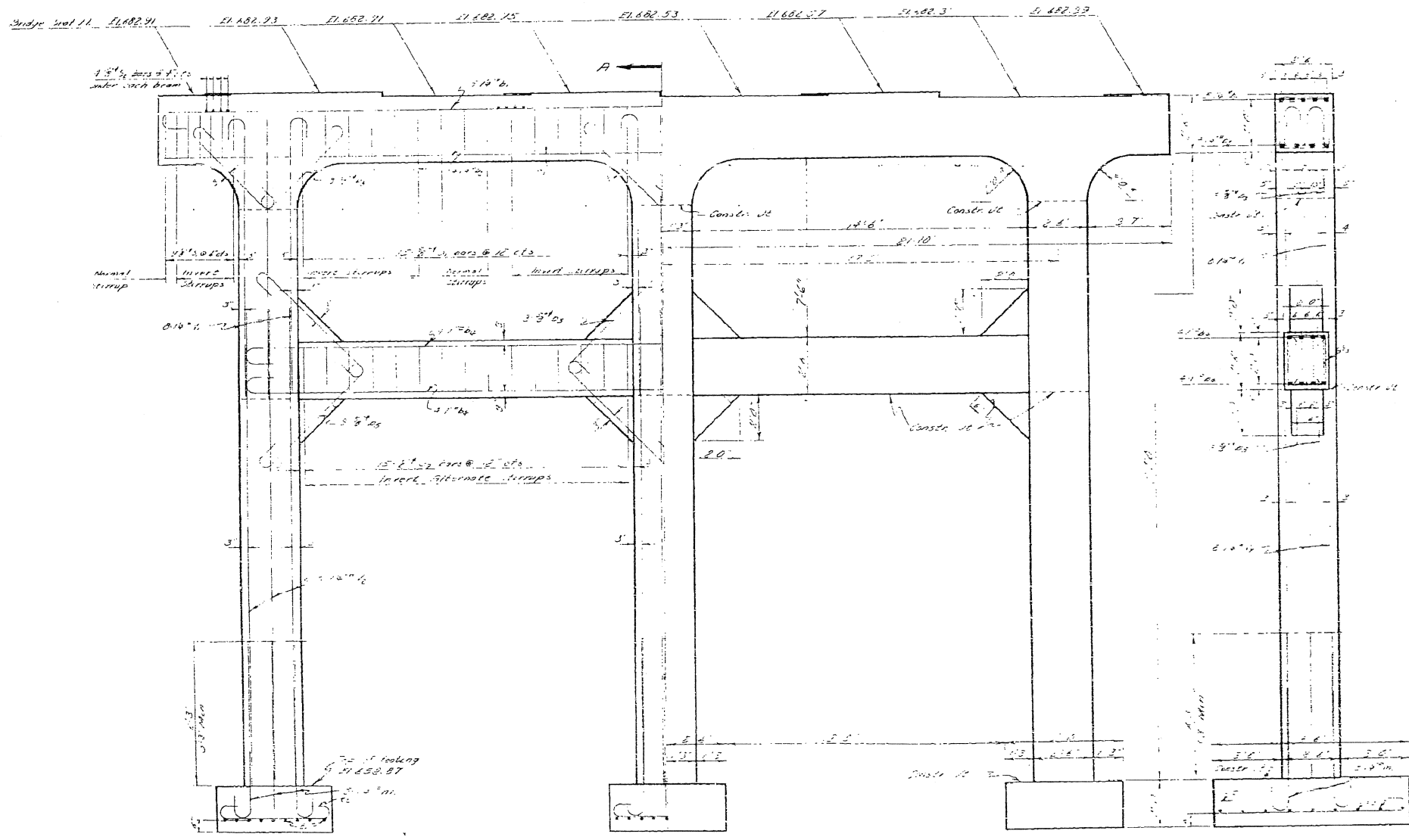
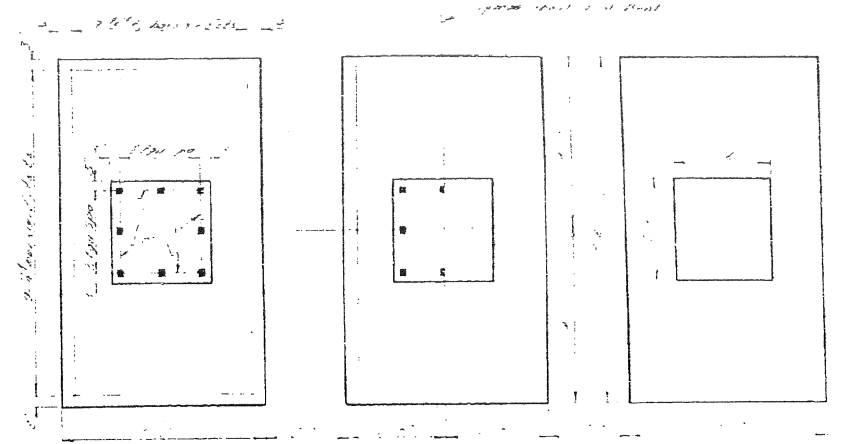
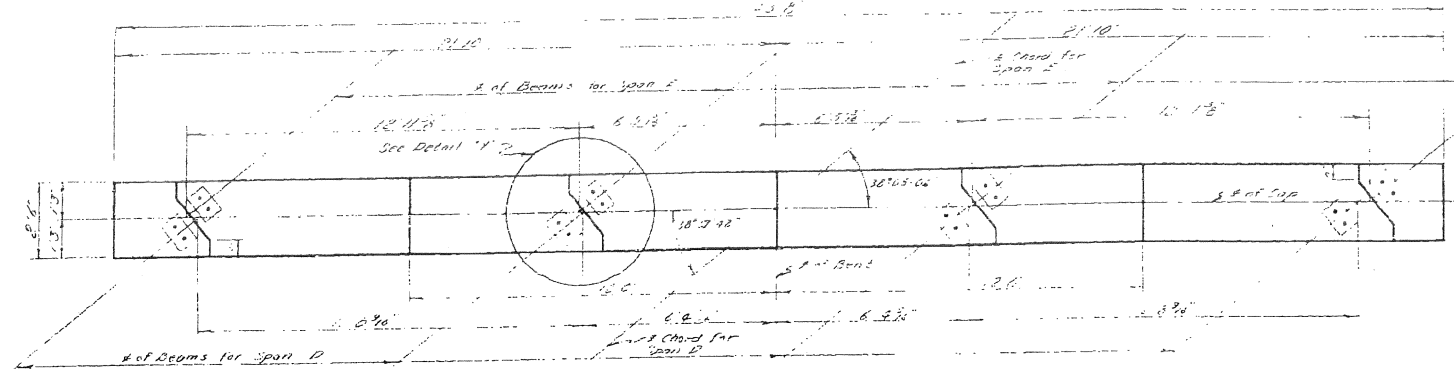


PART B
 PROJECT NO. 6734
 W. ALLEN COUNTY
 STATION: 800+54.8

STATE OF NORTH CAROLINA	
STATE HIGHWAY AND PUBLIC WORKS COMMISSION	
SUPERSTRUCTURE	
BRIDGE	
DATE	7-21-27
DESIGNED BY	W. ALLEN COUNTY
DRAWN BY	W. ALLEN COUNTY
CHECKED BY	W. ALLEN COUNTY
APPROVED BY	W. ALLEN COUNTY

SPECIAL
 DRAWN BY: W. ALLEN COUNTY
 DATE: 7-21-27
 CHECKED BY: W. ALLEN COUNTY
 DATE: 7-21-27

NO. FILE	DATE	PROJECT NO.
3	NC	4737
E.A. B. J. 12-768 (1)		

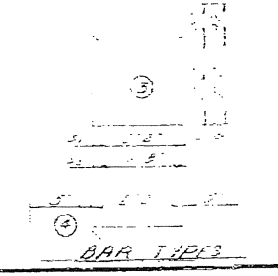


TOTAL BILL OF MATERIAL

NO.	DESCRIPTION	QUANTITY	UNIT	PRICE	TOTAL
1	Concrete	100	cu yd	1.50	150.00
2	Reinforcing Steel	100	lbs	0.10	10.00
3	Formwork	100	sq ft	0.05	5.00
4	Gravel	100	cu yd	1.00	100.00
5	Sand	100	cu yd	0.50	50.00
6	Oil	100	gals	0.10	10.00
7	Paint	100	sq ft	0.05	5.00
8	Other	100	sq ft	0.05	5.00
TOTAL					335.00

1	2.00	100	200.00
2	1.50	100	150.00
3	1.00	100	100.00
4	0.50	100	50.00
5	0.20	100	20.00
6	0.10	100	10.00
7	0.05	100	5.00
8	0.05	100	5.00
TOTAL			540.00

1	2.00	100	200.00
2	1.50	100	150.00
3	1.00	100	100.00
4	0.50	100	50.00
5	0.20	100	20.00
6	0.10	100	10.00
7	0.05	100	5.00
8	0.05	100	5.00
TOTAL			540.00



STATE OF NORTH CAROLINA
STATE HIGHWAY AND
PUBLIC WORKS COMMISSION
SECTION
SUBSTRUCTURE

FEBRUARY 1955

PROJECT NO. 2734
COUNTY ROWAN-DIVISION
STATION: 726+73.95 to 850+00
BENT NO 4

DESIGNED BY: H. B. ...
DATE: 12/26/53
CHECKED BY: H. B. ...
DATE: 1/26/54

REVISIONS

NO.	DATE	DESCRIPTION
1	12/26/53	...
2	1/26/54	...

DESIGNED BY: H. B. ... DATE: 12/26/53
CHECKED BY: H. B. ... DATE: 1/26/54