

**STATE OF NORTH CAROLINA
DEPARTMENT OF TRANSPORTATION**

**PAVEMENT MARKING PLAN
CLEVELAND COUNTY**

**LOCATION: US 74 (SHELBY BYPASS) FROM WEST OF SR 1162 (PEACHTREE RD)
TO WEST OF SR 1313 (WASHBURN SWITCH RD)**

T.I.P.: R-2707AA

CONTRACT:

ROADWAY STANDARD DRAWINGS

THE FOLLOWING ROADWAY STANDARDS AS APPEAR IN "ROADWAY STANDARD DRAWINGS" - PROJECT SERVICES UNIT - N.C. DEPARTMENT OF TRANSPORTATION - RALEIGH, N.C., DATED JANUARY 2012 ARE APPLICABLE TO THIS PROJECT AND BY REFERENCE HEREBY ARE CONSIDERED A PART OF THESE PLANS:

STD. NO.	TITLE
1205.01	PAVEMENT MARKINGS - LINE TYPES AND OFFSETS
1205.02	PAVEMENT MARKINGS - 2 LANE AND MULTI LANE ROADWAYS
1205.03	PAVEMENT MARKINGS - EXIT AND ENTRANCE RAMP
1205.04	PAVEMENT MARKINGS - INTERSECTIONS
1205.05	PAVEMENT MARKINGS - TURN LANES
1205.06	PAVEMENT MARKINGS - LANE DROPS
1205.08	PAVEMENT MARKINGS - SYMBOL AND WORD MESSAGES
1205.09	PAVEMENT MARKINGS - PAINTED ISLANDS
1205.12	PAVEMENT MARKINGS - BRIDGES
1205.13	PAVEMENT MARKINGS - LANE REDUCTIONS
1250.01	RAISED PAVEMENT MARKERS - INSTALLATION SPACING
1251.01	RAISED PAVEMENT MARKERS - PERMANENT & TEMPORARY
1253.01	RAISED PAVEMENT MARKERS - SNOWPLOWABLE
1261.01	GUARDRAIL AND BARRIER DELINEATORS - INSTALLATION SPACING
1261.02	GUARDRAIL AND BARRIER DELINEATORS - TYPES & MOUNTING
1262.01	GUARDRAIL END DELINEATION
1264.01	OBJECT MARKERS - TYPES
1264.02	OBJECT MARKERS - INSTALLATION
1267.01	FLEXIBLE DELINEATORS - INSTALLATION
1267.02	FLEXIBLE DELINEATORS - SPACING TABLES
1267.03	FLEXIBLE DELINEATORS - INTERCHANGE PLACEMENT

INDEX

SHEET NO.	DESCRIPTION
PMP-1	PAVEMENT MARKING PLAN COVER SHEET
PMP-1A	PAVEMENT MARKING LEGEND & SCHEDULE
PMP-02 THRU PMP-14	PAVEMENT MARKING DETAILS

GENERAL NOTES

THE FOLLOWING GENERAL NOTES APPLY AT ALL TIMES FOR THE DURATION OF THE CONSTRUCTION PROJECT, EXCEPT WHEN OTHERWISE NOTED IN THE PLAN, OR DIRECTED BY THE ENGINEER.

A) INSTALL PAVEMENT MARKINGS AND PAVEMENT MARKERS ON THE FINAL SURFACE AS FOLLOWS:

ROAD NAME	MARKING	MARKER
US 74 (-L-) -Y2- & -Y6-	POLYUREA (HIGHLY REFLECTIVE ELEMENTS)	SNOWPLOWABLE
ALL OTHER ROADS	POLYUREA (HIGHLY REFLECTIVE ELEMENTS)	NONE
BRIDGES	POLYUREA (HIGHLY REFLECTIVE ELEMENTS)	RAISED

- B) SIX-INCH WIDE MARKINGS INCLUDING BUT NOT LIMITED TO LANE LINES, EDGE LINES AND SKIPS SHALL BE USED ON ALL US ROUTES WITH CONTROLLED ACCESS.
- C) ON ASPHALT SURFACES USE HEATED-IN-PLACE THERMOPLASTIC OR EXTRUDED THERMOPLASTIC MARKINGS FOR STOP BARS, SYMBOLS, CHARACTERS AND DIAGONALS.
- D) REMOVE ALL RESIDUE AND SURFACE LANTAGE BY WATER BLASTING OR GRINDING ON BRIDGE DECK(S) PRIOR TO PLACING POLYUREA PAVEMENT MARKINGS.
- E) TIE PROPOSED PAVEMENT MARKING LINES TO EXISTING PAVEMENT MARKING LINES.
- F) PASSING ZONE(S) WILL BE DETERMINED IN THE FIELD AND MUST BE APPROVED BY THE ENGINEER.
- G) MARKERS SHALL BE INSTALLED ACCORDING TO THE NCDOT ROADWAY STANDARD DRAWING 1250.01.
- H) STOPBARS AT NON-SIGNALIZED INTERSECTIONS MAY BE ADJUSTED AS DIRECTED BY THE ENGINEER.

HNTB HNTB NORTH CAROLINA, P.C.
343 E. Six Forks Road, Suite 200
Raleigh, North Carolina 27609
C-1554

PLAN REVIEWED BY: N.C.D.O.T. SIGNING AND DELINEATION UNIT

<u>K. Jordan</u>	SIGNING & DELINEATION REGIONAL ENGINEER
<u>D. Beard</u>	SIGNING & DELINEATION PROJECT DESIGN ENGINEER

PLAN PREPARED BY: HNTB NORTH CAROLINA

<u>R. B. Early, PE</u>	PROJECT ENGINEER
<u>A. R. Landis, PE</u>	PROJECT DESIGNER

Q&QC STAGE: _____
 REVIEW: _____
 CONCUR: _____
 REVISE: _____
 VERIFY: _____

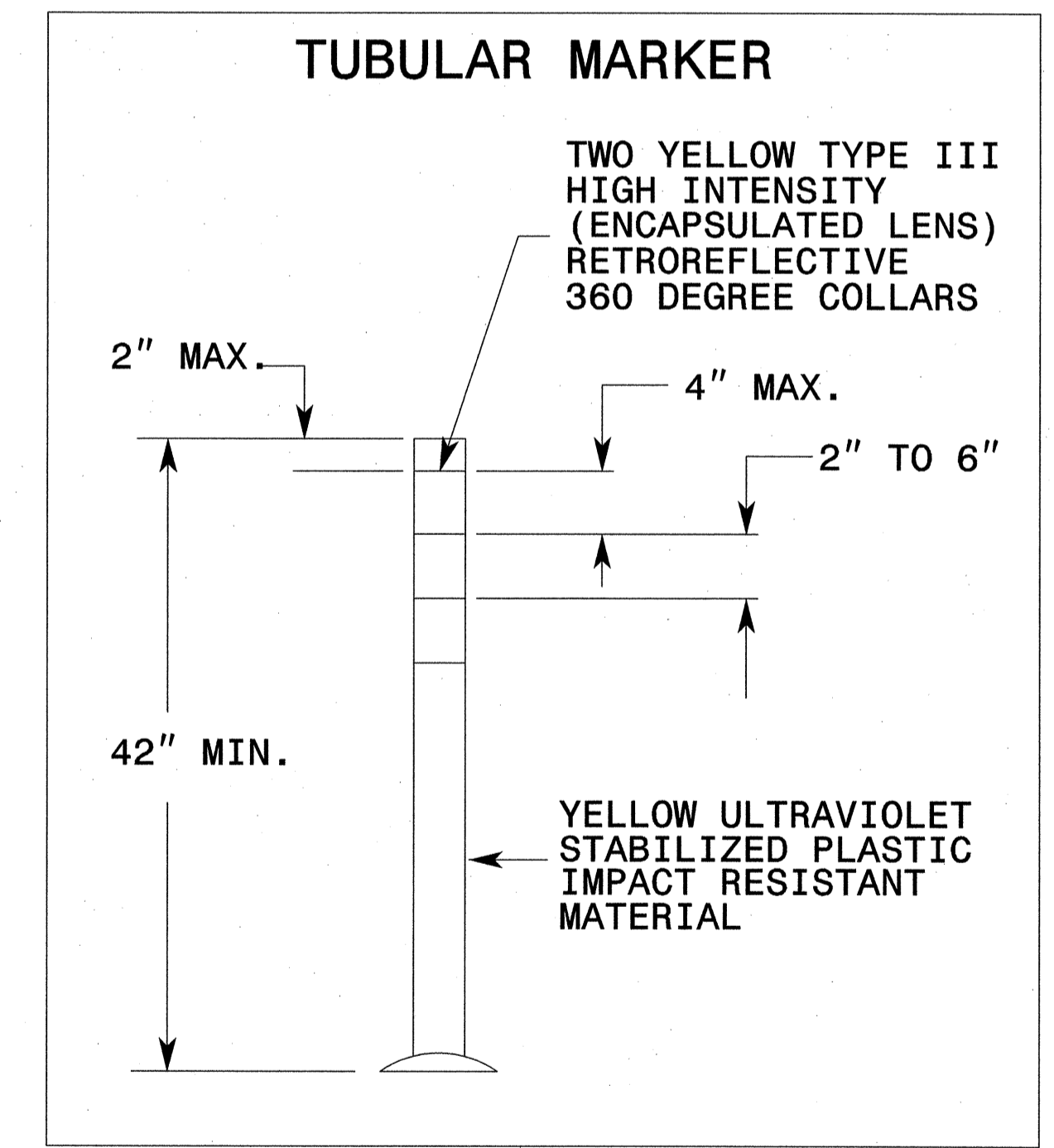
FINAL PAVEMENT MARKING SCHEDULE

MATERIAL	SYMBOL	DESCRIPTION
PAVEMENT MARKING		
POLYUREA (4")		
	VA	WHITE EDGELINE
	VB	YELLOW EDGELINE
	VC	10' WHITE SKIP
	VD	3' WHITE MINISKIP (9' SPACE)
	VE	WHITE SOLID LANE LINE
	VI	YELLOW DOUBLE CENTER
	V8	2' WHITE MINISKIP (6' SPACE)
POLYUREA (6")		
	V6	WHITE EDGELINE
	V7	YELLOW EDGELINE
	VJ	10' WHITE SKIP
	VK	3' WHITE MINISKIP (9' SPACE)
	VL	WHITE SOLID LANE LINE
THERMOPLASTIC (8", 90 MIL)		
	TP	YELLOW DIAGONAL
THERMOPLASTIC (12", 90 MIL)		
	TU	WHITE DIAGONAL
	TV	YELLOW DIAGONAL
POLYUREA (12")		
	VS	WHITE GORELINE
THERMOPLASTIC (24", 120 MIL)		
	T2	WHITE STOP BAR
THERMOPLASTIC SYMBOL		
	UA	LEFT TURN ARROW
	UB	RIGHT TURN ARROW
	UC	STRAIGHT ARROW
	UE	STRAIGHT/RIGHT ARROW
	UP	MERGE ARROW
PERMANENT RAISED PAVEMENT MARKERS		
	MA	YELLOW & YELLOW
	MB	CRYSTAL & RED
SNOWPLOWABLE RAISED PAVEMENT MARKERS		
	ME	YELLOW & YELLOW
	MF	TYPE 3 CRYSTAL & RED

LEGEND

- GENERAL**
- DIRECTION OF TRAFFIC FLOW
 - NORTH ARROW
 - PROPOSED PVMT. EXIST. PVMT.

- PAVEMENT MARKINGS**
- PAVEMENT MARKING SYMBOLS
 - YELLOW/YELLOW PAVEMENT MARKER
 - CRYSTAL/RED PAVEMENT MARKER



8/17/99

REVISIONS

QA/QC STAGE: _____

REVIEW: _____

CONCUR: _____

REVISE: _____

VERIFY: _____

APPROVED: *[Signature]* DATE: 11.2.12

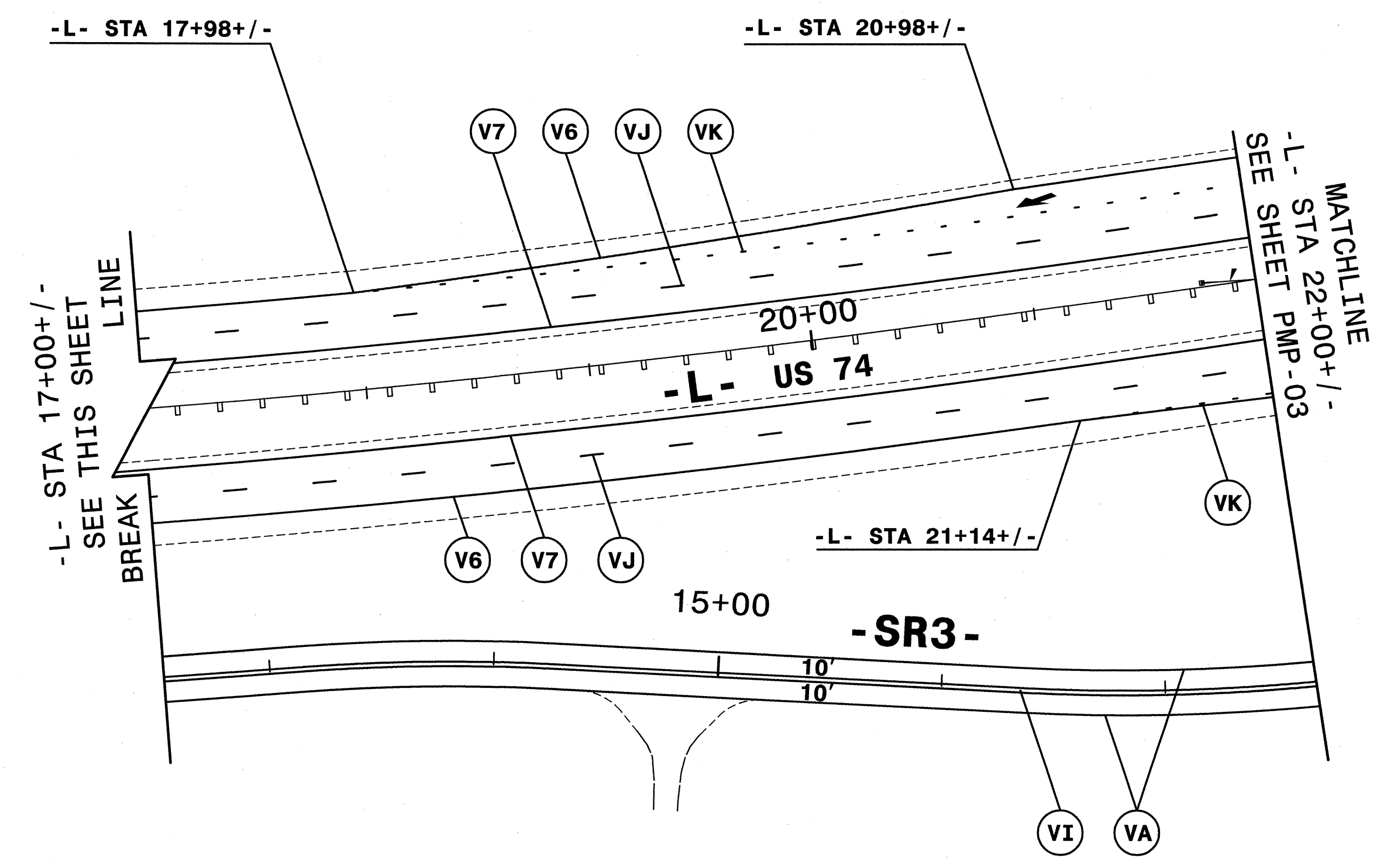
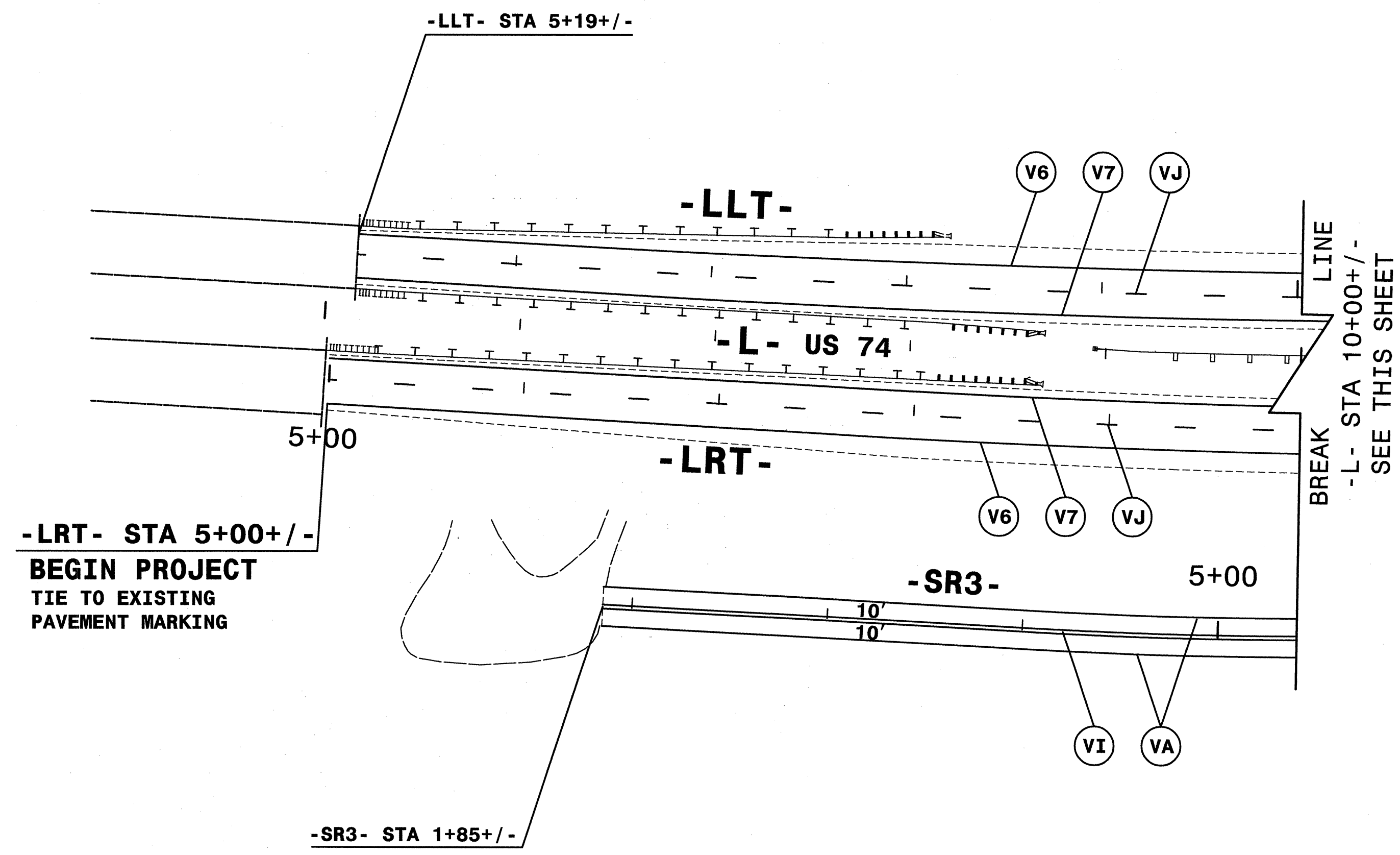
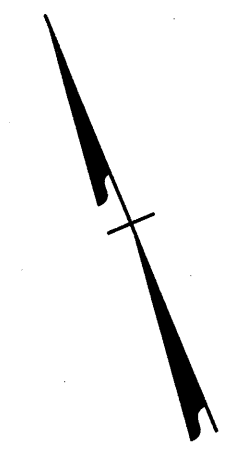
SEAL

SIGNING AND DELINEATION

FINAL PAVEMENT MARKING PLANS

HNTB

HNTB NORTH CAROLINA, P.C.
343 E. Six Forks Road, Suite 200
Raleigh, North Carolina 27609
NC License No: C-1554



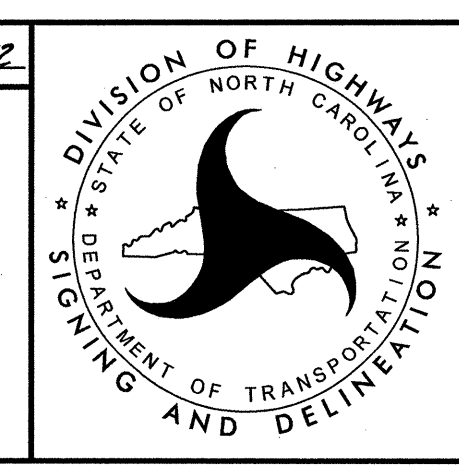
REVISIONS

QA/QC STAGE:
 REVIEW:
 CONCUR:
 REVISE:
 VERIFY:

REFER TO SHEET PMP-1A FOR PAVEMENT MARKING SCHEDULE.
 ALL LANE WIDTHS ARE 12' UNLESS OTHERWISE SHOWN.

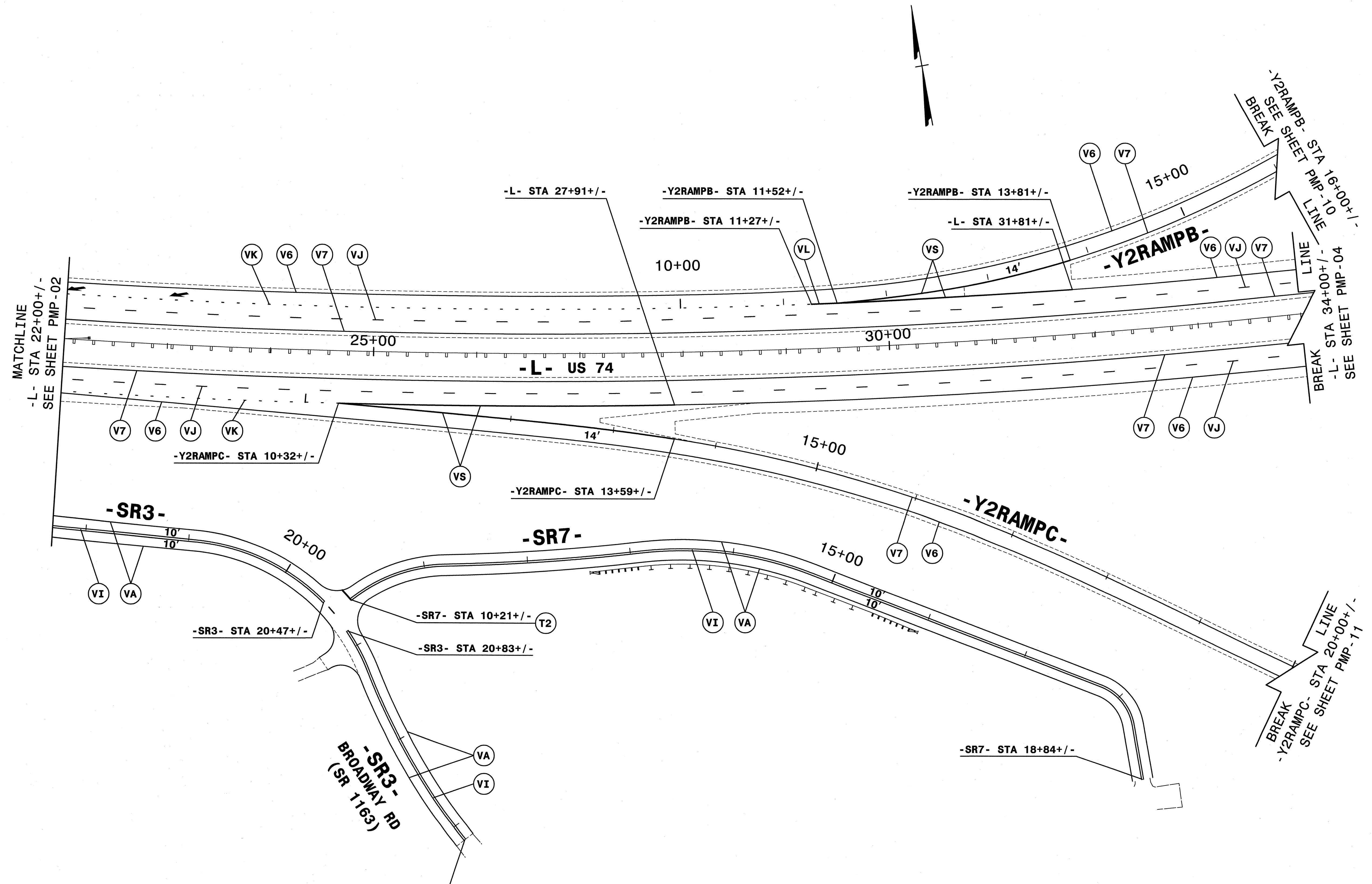
HNTB HNTB NORTH CAROLINA, P.C.
 343 E. Six Forks Road, Suite 200
 Raleigh, North Carolina 27609
 NC License No: C-1554

APPROVED: *[Signature]* DATE: 8-27-12
 SEAL
 NORTH CAROLINA PROFESSIONAL ENGINEER
 RONDA B. EIRLY



SIGNING AND DELINEATION
FINAL PAVEMENT MARKING PLANS

8/17/99



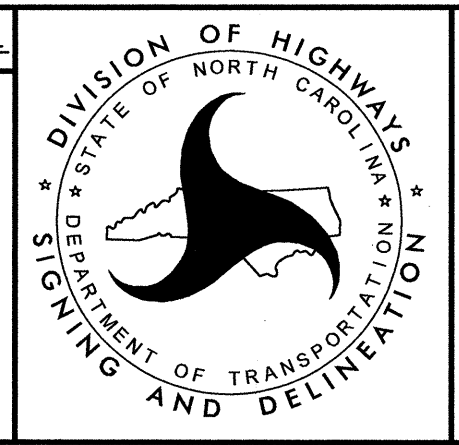
REVISIONS

QA/QC STAGE:
REVIEW:
CONCUR:
REVISE:
VERIFY:

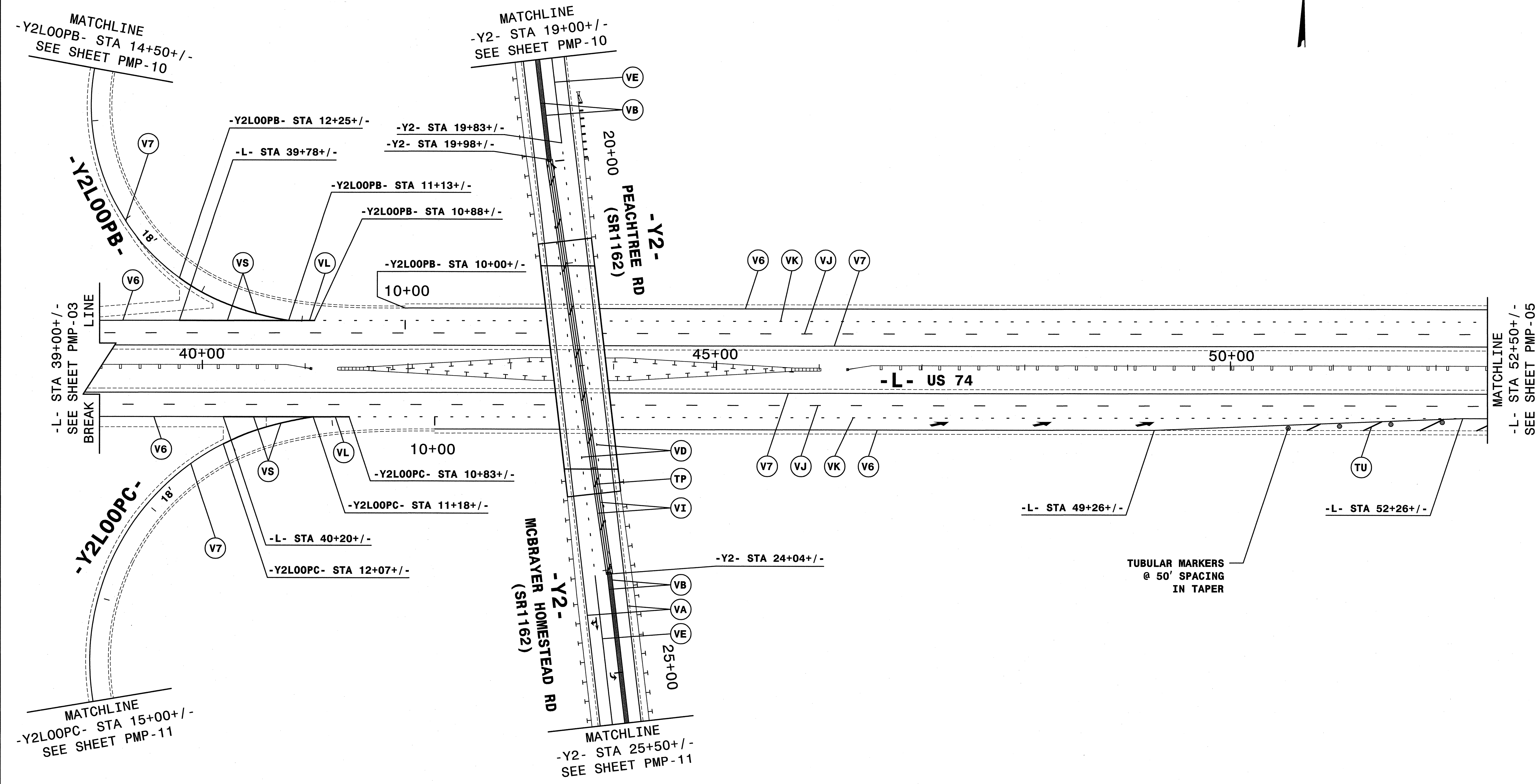
REFER TO SHEET PMP-1A FOR PAVEMENT MARKING SCHEDULE.
ALL LANE WIDTHS ARE 12' UNLESS OTHERWISE SHOWN.

HNTB
HNTB NORTH CAROLINA, P.C.
343 E. SIX FORKS ROAD, SUITE 200
RALEIGH, NORTH CAROLINA 27609
NC LICENSE NO: C-1554

APPROVED: *[Signature]* DATE: 8-22-12
SEAL
NORTH CAROLINA PROFESSIONAL ENGINEER
PIRONDA B. EARLY



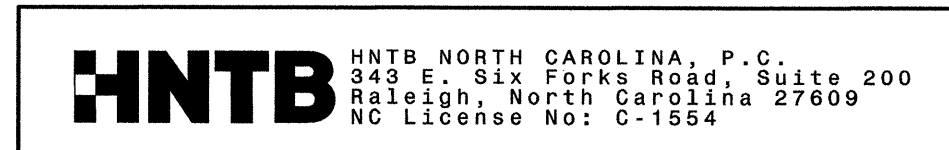
SIGNING AND DELINEATION
FINAL PAVEMENT MARKING PLANS



REVISIONS

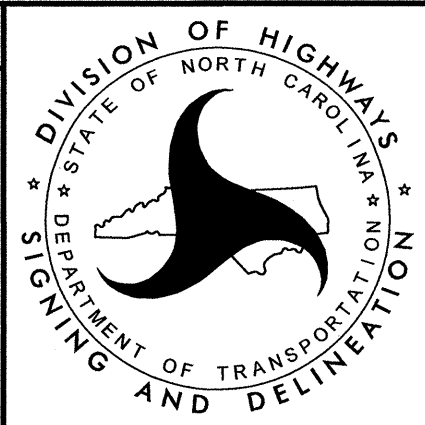
GAQC STAGE: _____
 REVIEW: _____
 CONCUR: _____
 REVISE: _____
 VERIFY: _____

REFER TO SHEET PMP-1A FOR PAVEMENT MARKING SCHEDULE.
 ALL LANE WIDTHS ARE 12' UNLESS OTHERWISE SHOWN.



APPROVED: *[Signature]* DATE: 8.27.12

SEAL

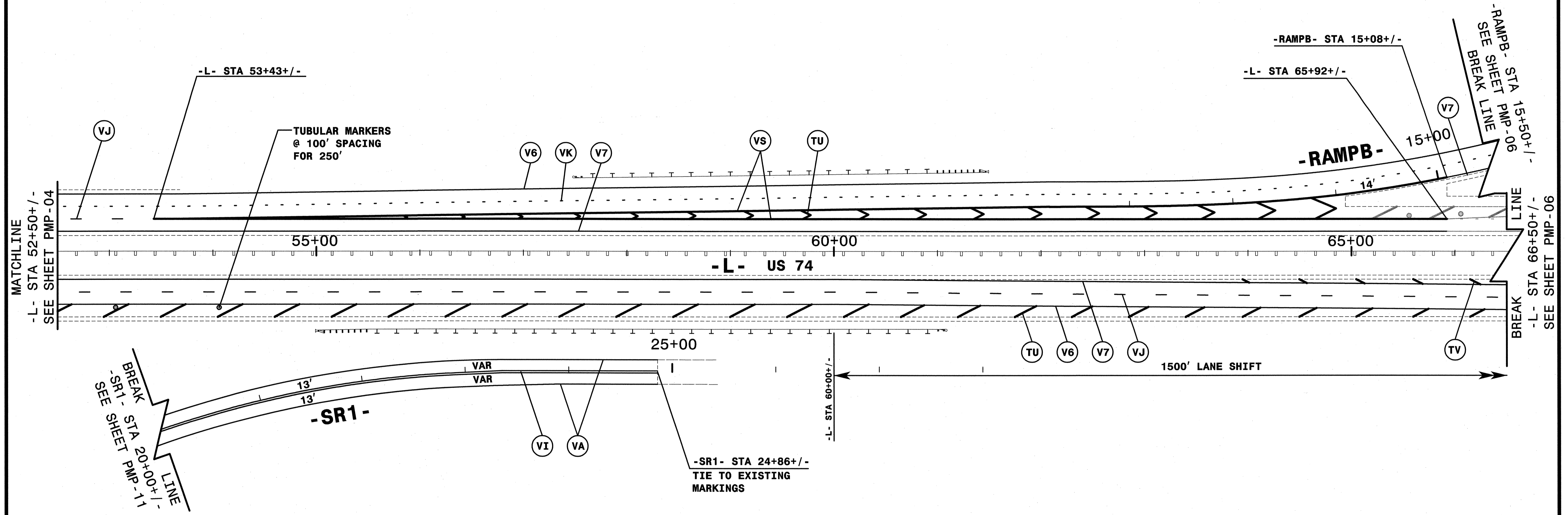


SIGNING AND DELINEATION

FINAL PAVEMENT MARKING PLANS



8/17/99



REVISIONS

QA/QC STAGE:	
REVIEW:	
CONCUR:	
REVISE:	
VERIFY:	

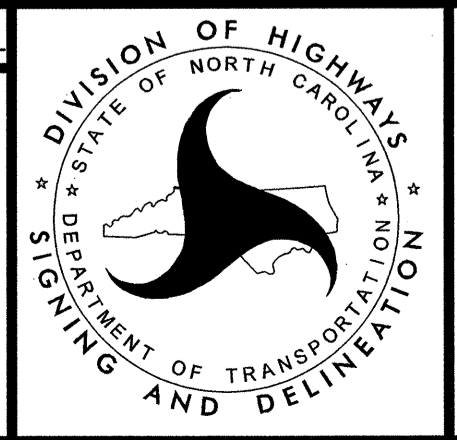
REFER TO SHEET PMP-1A FOR PAVEMENT MARKING SCHEDULE.

ALL LANE WIDTHS ARE 12' UNLESS OTHERWISE SHOWN.

HNTB HNTB NORTH CAROLINA, P.C.
343 E. Six Forks Road, Suite 200
Raleigh, North Carolina 27609
NC License No: C-1554

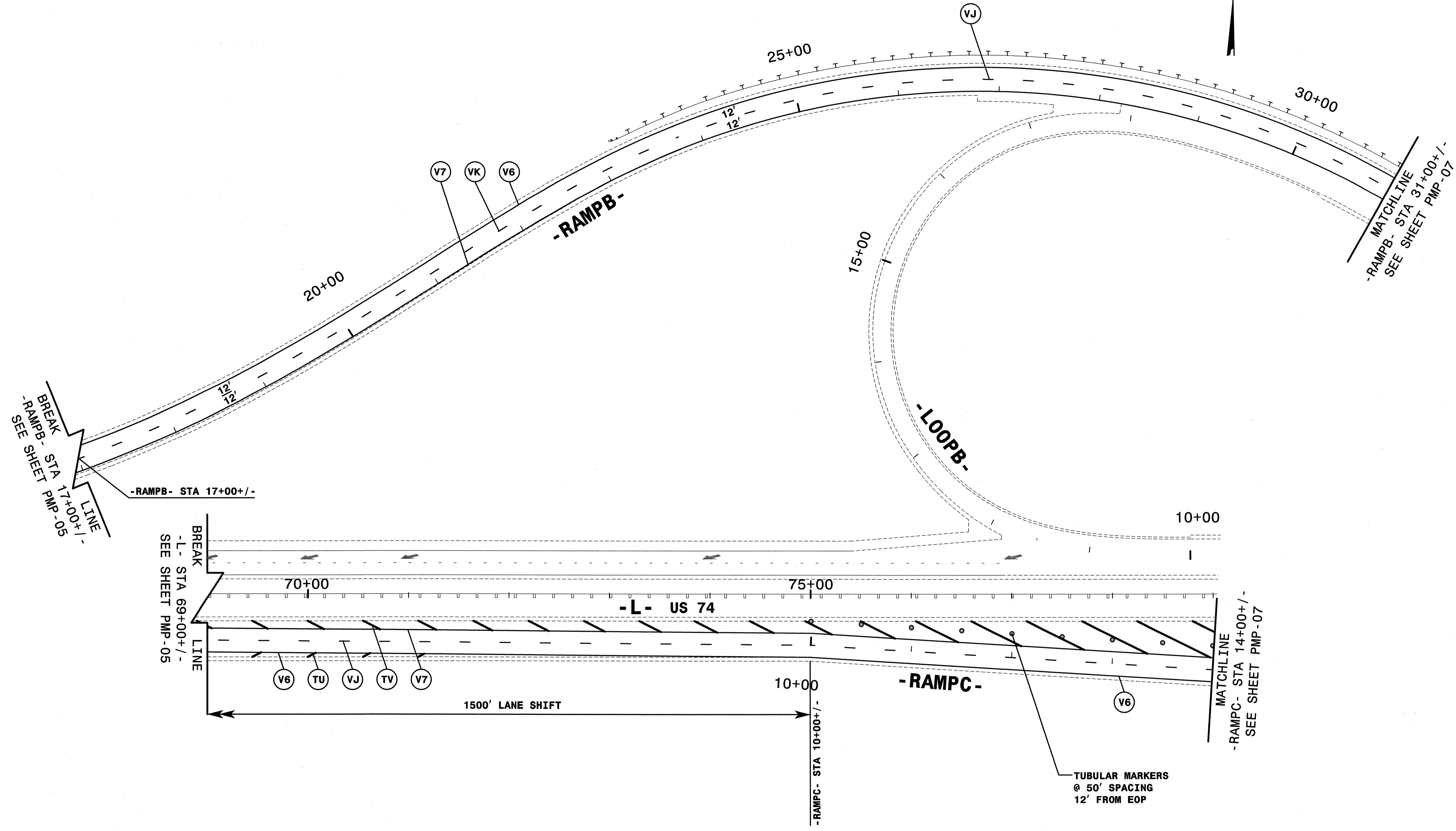
APPROVED: *Wanda A. Early* DATE: 10-30-12

SEAL
NORTH CAROLINA
PROFESSIONAL
ENGINEER
WANDA B. EARLY
023521



SIGNING AND DELINEATION

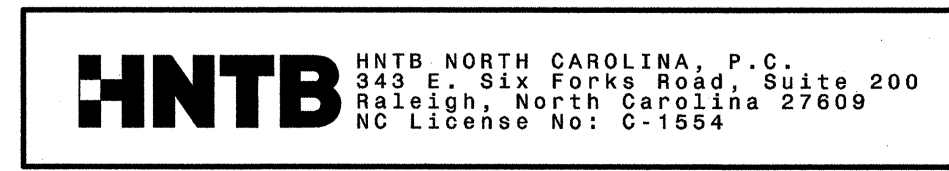
FINAL PAVEMENT MARKING PLANS



REVISIONS

QA/QC STAGE: _____
 REVIEW: _____
 CONCUR: _____
 REVISE: _____
 VERIFY: _____

REFER TO SHEET PMP-1A FOR PAVEMENT MARKING SCHEDULE.
 ALL LANE WIDTHS ARE 12' UNLESS OTHERWISE SHOWN.



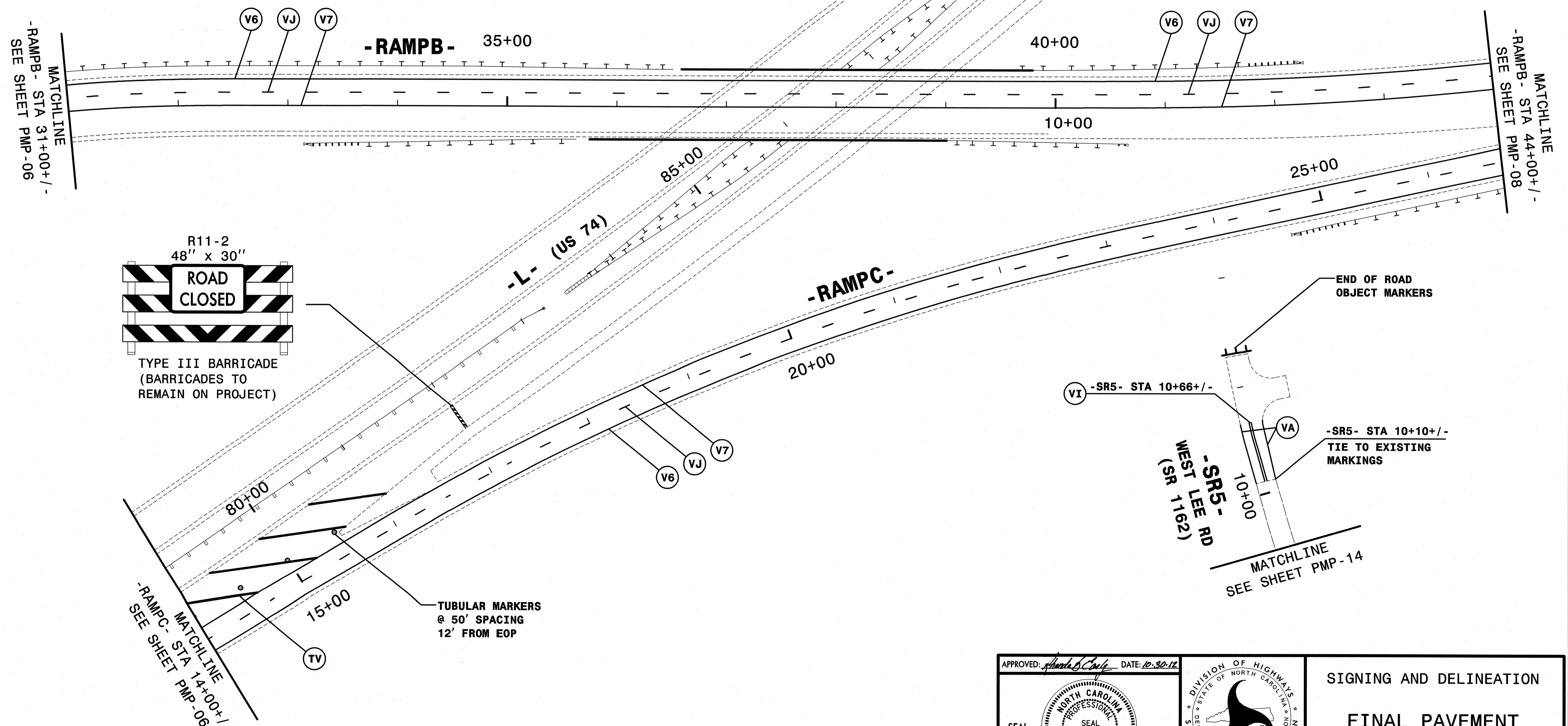
APPROVED: *[Signature]* DATE: 10.30.12

SEAL
 NORTH CAROLINA
 PROFESSIONAL
 ENGINEER
 BIONDA B. EARLY
 023521



SIGNING AND DELINEATION
FINAL PAVEMENT MARKING PLANS

8/17/99



REVISIONS

QA/QC STAGE:
REVIEW:
CONCUR:
REVISE:
VERIFY:

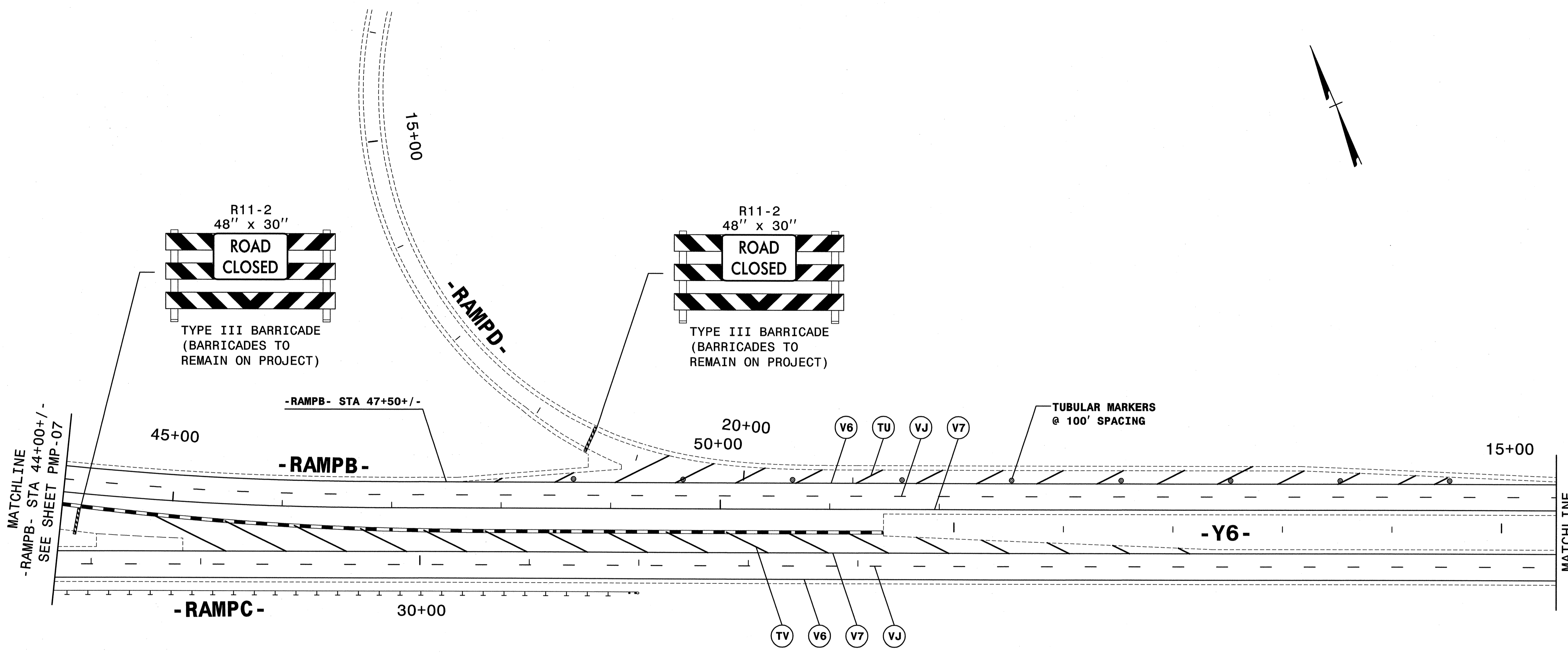
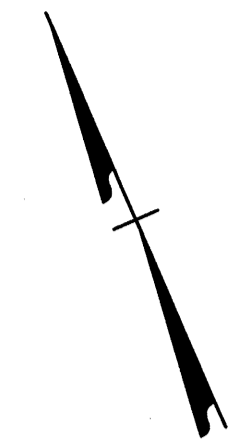
REFER TO SHEET PMP-1A FOR PAVEMENT MARKING SCHEDULE.
ALL LANE WIDTHS ARE 12' UNLESS OTHERWISE SHOWN.

HNTB
HNTB NORTH CAROLINA, P.C.
343 E. SIX FORKS ROAD, SUITE 200
RALEIGH, NORTH CAROLINA 27609
NC LICENSE NO: C-1554

APPROVED: *[Signature]* DATE: 12-30-12
SEAL
NORTH CAROLINA PROFESSIONAL ENGINEER
PIRONDA B. EARLY
023521

DIVISION OF HIGHWAYS
STATE OF NORTH CAROLINA
DEPARTMENT OF TRANSPORTATION
SIGNING AND DELINEATION

SIGNING AND DELINEATION
FINAL PAVEMENT MARKING PLANS



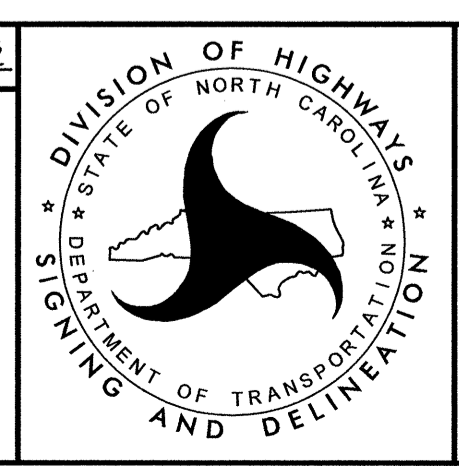
MATCHLINE
-RAMPB- STA 44+00+/-
SEE SHEET PMP-07

MATCHLINE
-Y6- STA 15+50+/-
SEE SHEET PMP-09

REFER TO SHEET PMP-1A FOR PAVEMENT MARKING SCHEDULE.
ALL LANE WIDTHS ARE 12' UNLESS OTHERWISE SHOWN.

HNTB
HNTB NORTH CAROLINA, P.C.
343 E. Six Forks Road, Suite 200
Raleigh, North Carolina 27609
NC License No: C-1554

APPROVED: *[Signature]* DATE: 8-27-12
SEAL
NORTH CAROLINA PROFESSIONAL ENGINEER
RICHMOND B. EARLY
SEAL 023521

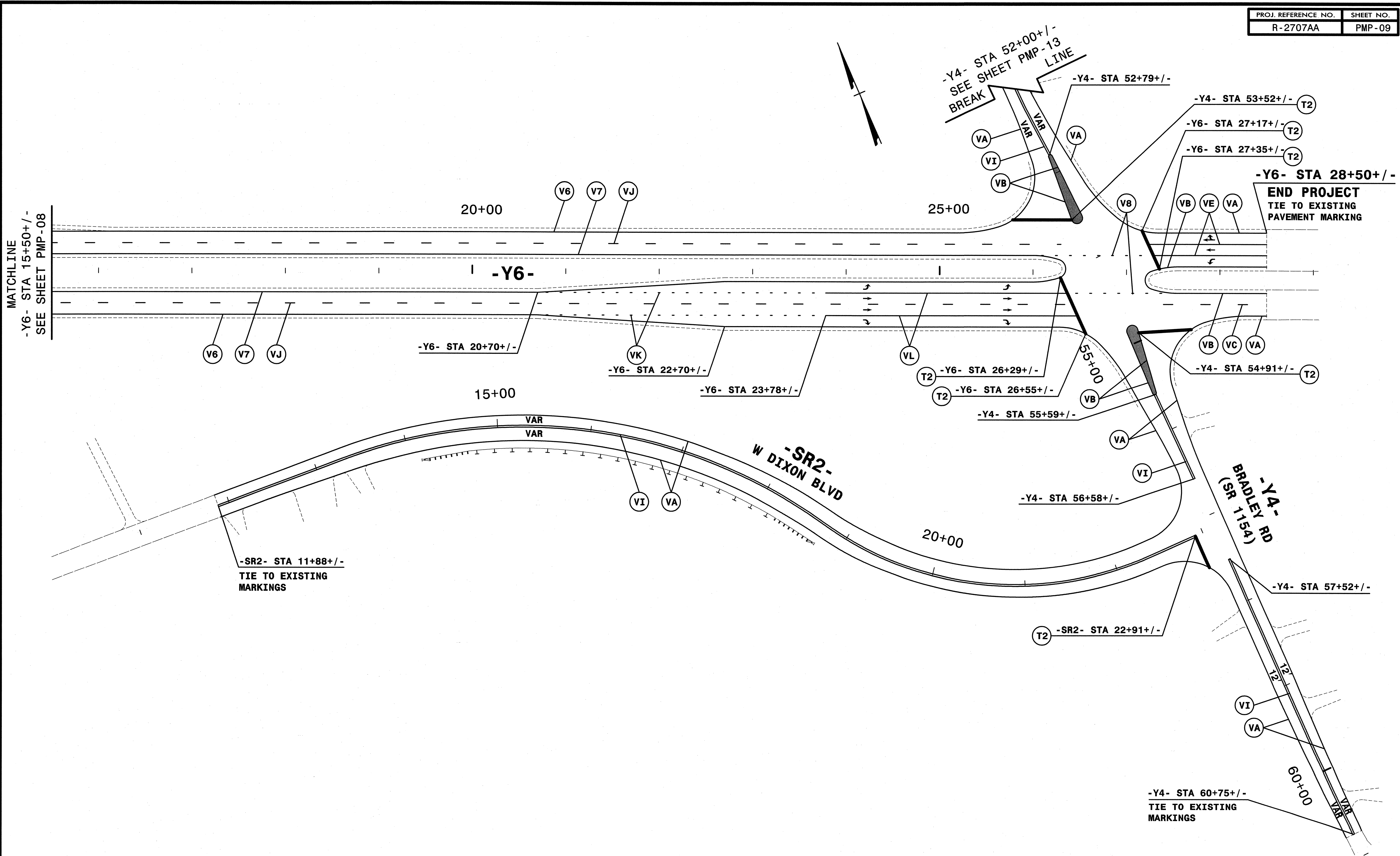


SIGNING AND DELINEATION
FINAL PAVEMENT MARKING PLANS

REVISIONS
 GAQC STAGE:
 REVIEW:
 CONCUR:
 REVISE:
 VERIFY:

8/17/99

8/17/99



MATCHLINE
-Y6- STA 15+50+/-
SEE SHEET PMP-08

END PROJECT
TIE TO EXISTING
PAVEMENT MARKING

-SR2- STA 11+88+/-
TIE TO EXISTING
MARKINGS

-Y4- STA 60+75+/-
TIE TO EXISTING
MARKINGS

REVISIONS

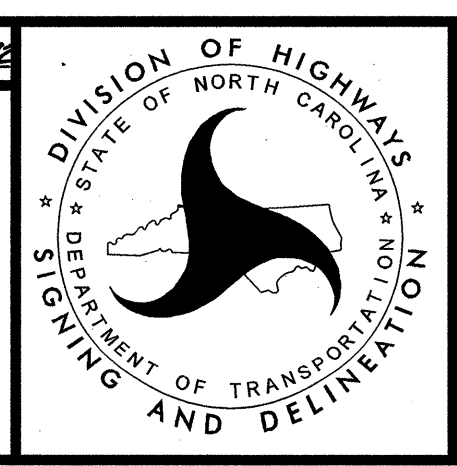
QA/QC STAGE:
REVIEW:
CONCUR:
REVISE:
VERIFY:

REFER TO SHEET PMP-1A FOR PAVEMENT MARKING SCHEDULE.

ALL LANE WIDTHS ARE 12' UNLESS OTHERWISE SHOWN.

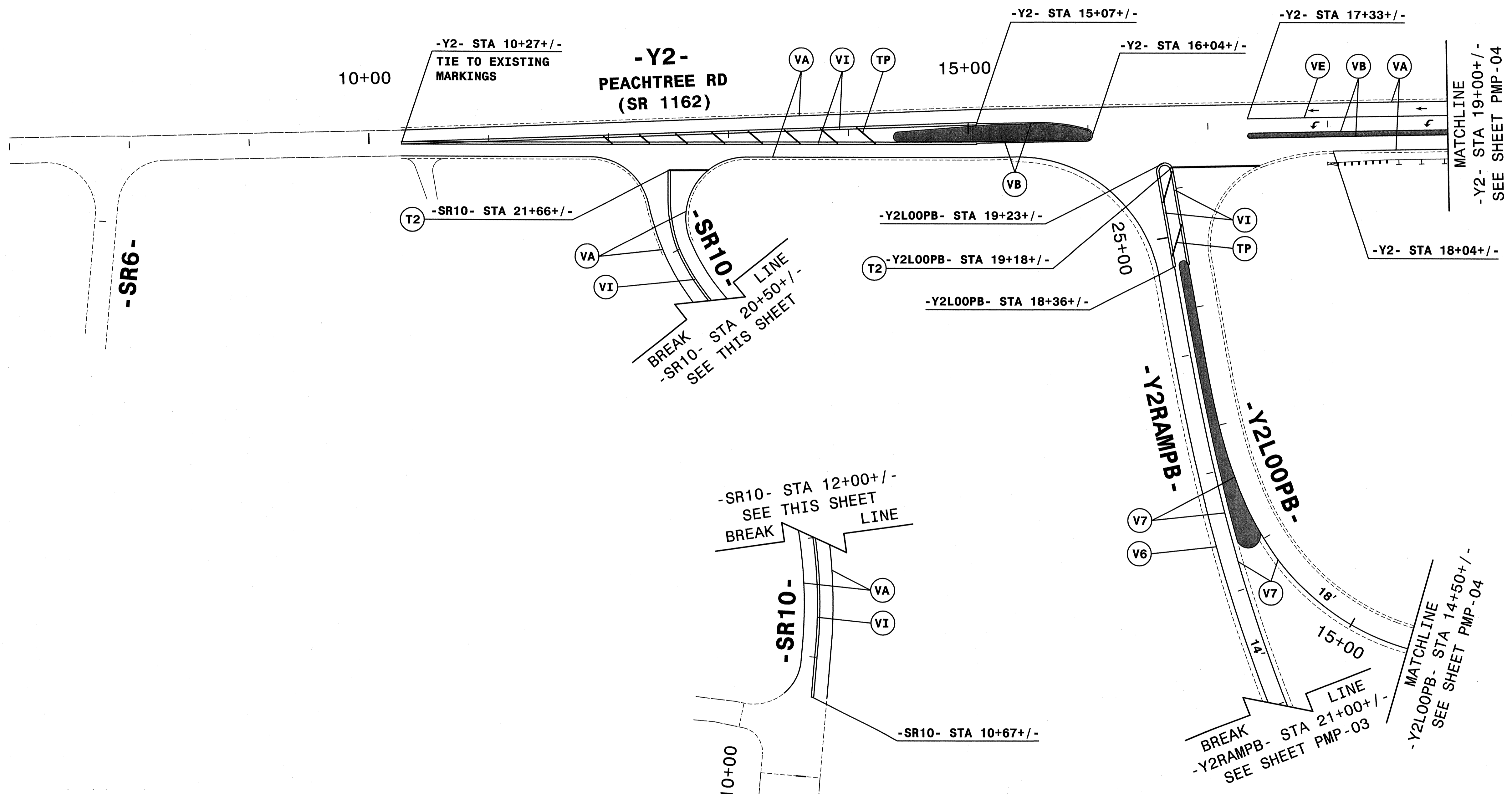
HNTB
HNTB NORTH CAROLINA, P.C.
343 E. SIX FORKS ROAD, SUITE 200
RALEIGH, NORTH CAROLINA 27609
NC LICENSE NO: C-1554

APPROVED: *[Signature]* DATE: 10-30-12
SEAL
NORTH CAROLINA
PROFESSIONAL
ENGINEER
PRIONDA B. EARLY



SIGNING AND DELINEATION
**FINAL PAVEMENT
MARKING PLANS**

8/17/99



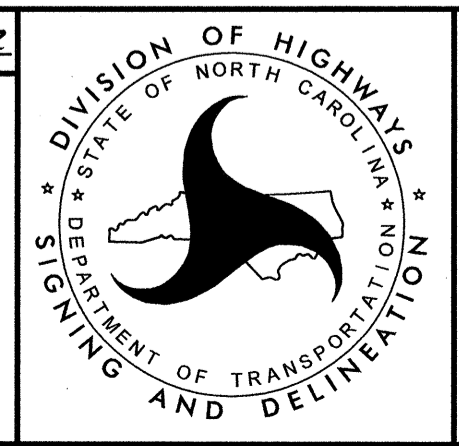
REVISIONS

QA/QC STAGE: _____
 REVIEW: _____
 CONCUR: _____
 REVISE: _____
 VERIFY: _____

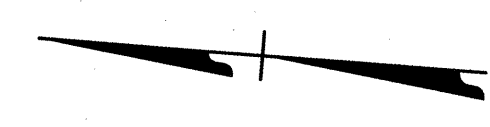
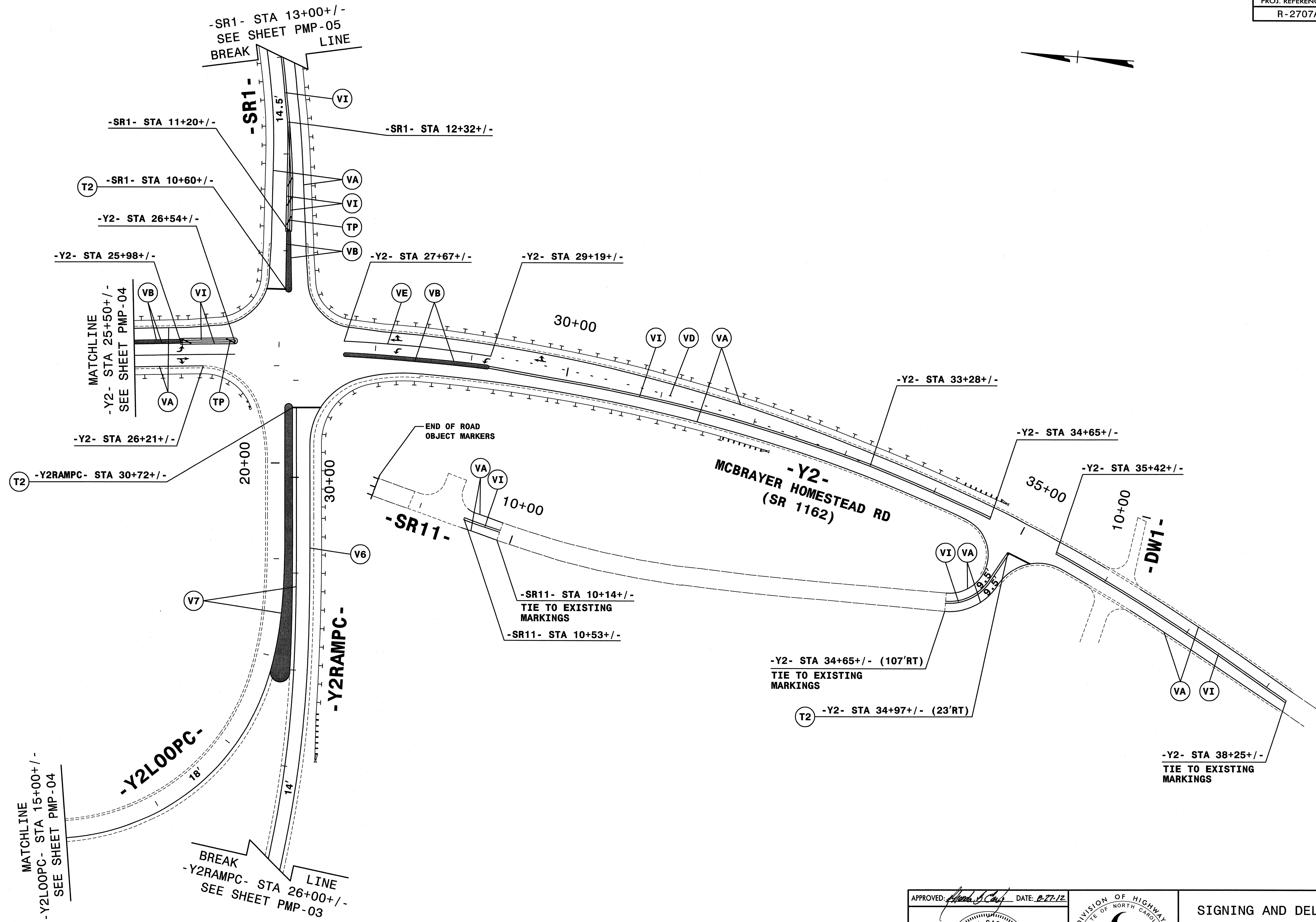
REFER TO SHEET PMP-1A FOR PAVEMENT MARKING SCHEDULE.
 ALL LANE WIDTHS ARE 12' UNLESS OTHERWISE SHOWN.

HNTB
 HNTB NORTH CAROLINA, P.C.
 343 E. SIX FORKS ROAD, SUITE 200
 RALEIGH, NORTH CAROLINA 27609
 NC LICENSE NO: C-1554

APPROVED: *[Signature]* DATE: 8/22/12
 SEAL
 NORTH CAROLINA PROFESSIONAL ENGINEER
 RYAN B. EARLY
 023521



SIGNING AND DELINEATION
FINAL PAVEMENT MARKING PLANS



REVISIONS

QA/QC STAGE:

REVIEW:
CONCUR:
REVISE:
VERIFY:

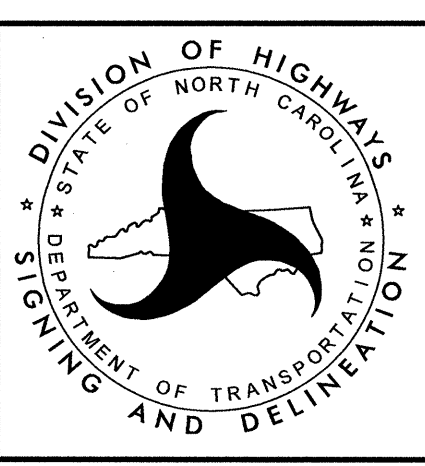
REFER TO SHEET PMP-1A FOR PAVEMENT MARKING SCHEDULE.

ALL LANE WIDTHS ARE 12' UNLESS OTHERWISE SHOWN.

HNTB HNTB NORTH CAROLINA, P.C.
243 E. Six Forks Road, Suite 200
Raleigh, North Carolina 27609
NC License No: C-1554

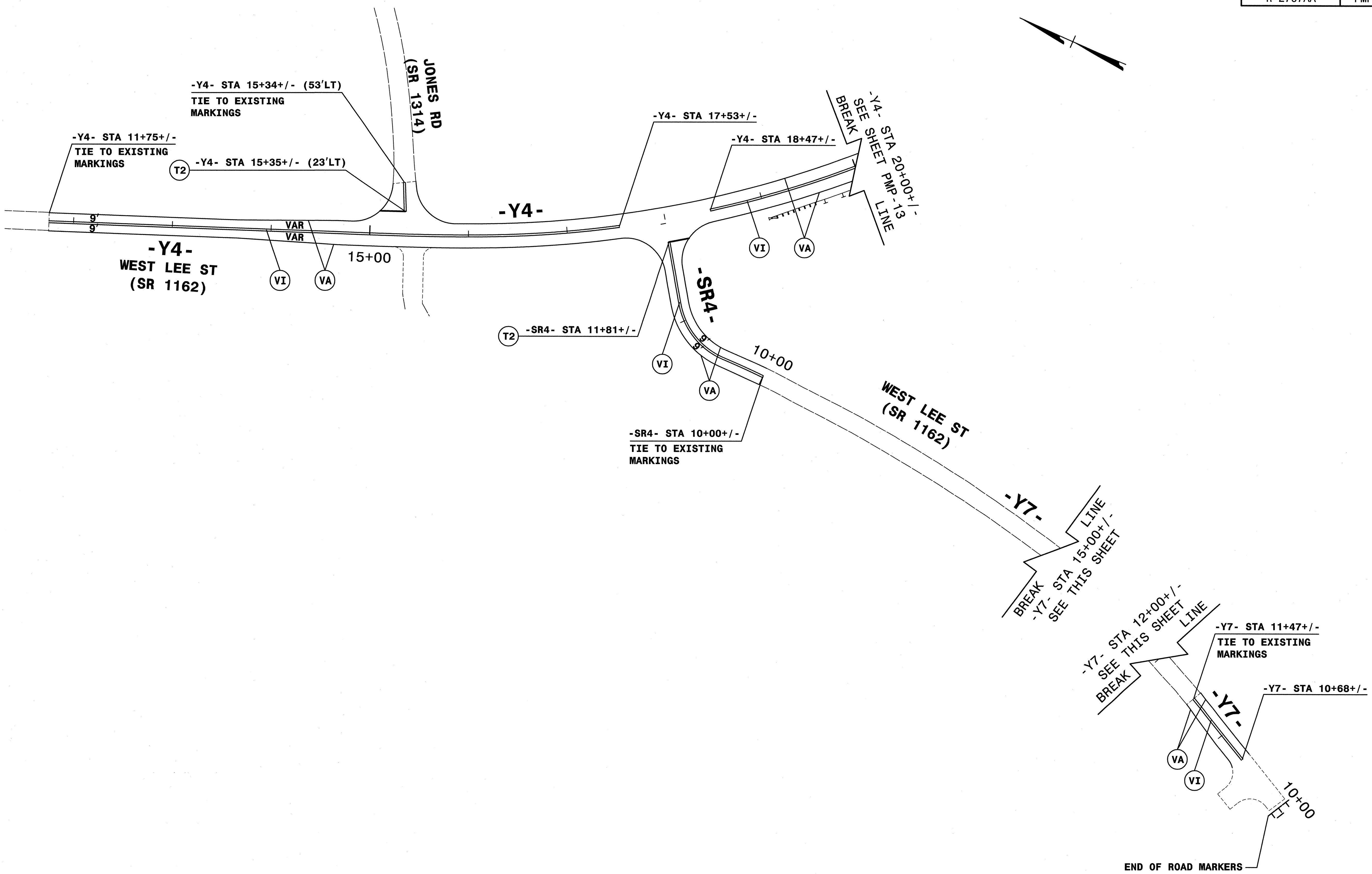
APPROVED: *[Signature]* DATE: 8-27-12

SEAL
NORTH CAROLINA
PROFESSIONAL
ENGINEER
023521
RIONDA B. EARLY



SIGNING AND DELINEATION
FINAL PAVEMENT MARKING PLANS

8/17/99



REVISIONS

QA/QC STAGE:
 REVIEW:
 CONCUR:
 REVISE:
 VERIFY:

REFER TO SHEET PMP-1A FOR PAVEMENT MARKING SCHEDULE.
 ALL LANE WIDTHS ARE 12' UNLESS OTHERWISE SHOWN.

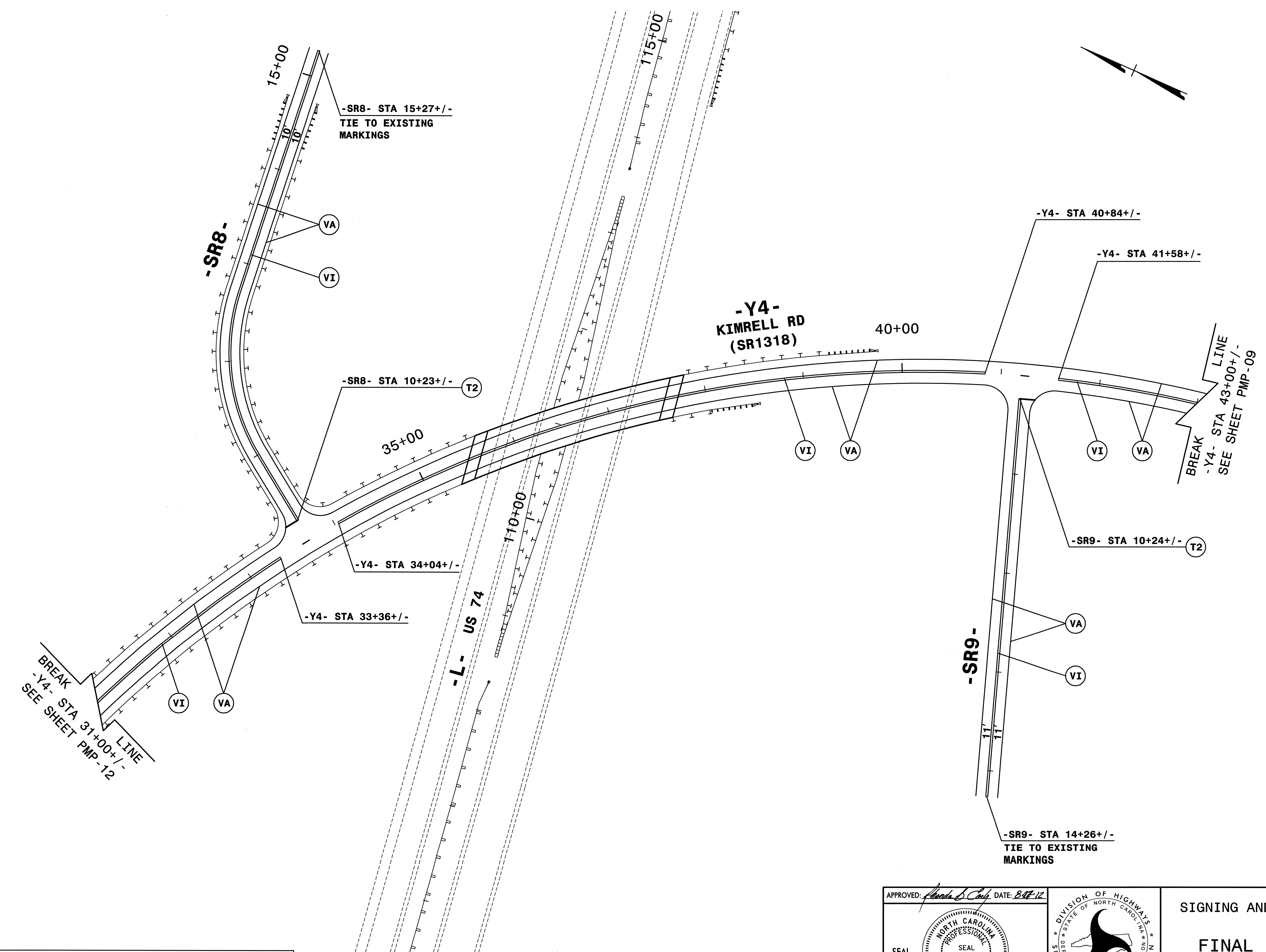
HNTB HNTB NORTH CAROLINA, P.C.
 343 E. Six Forks Road, Suite 200
 Raleigh, North Carolina 27609
 NC License No: C-1554

APPROVED: *Mark S. Early* DATE: 8-27-12
 SEAL
 NORTH CAROLINA PROFESSIONAL ENGINEER
 023521
 WYONDA B. EARLY



SIGNING AND DELINEATION
FINAL PAVEMENT MARKING PLANS

8/17/99



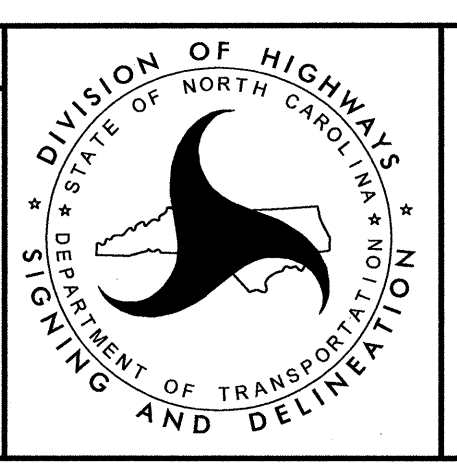
REVISIONS

QA/QC STAGE: _____
 REVIEW: _____
 CONCUR: _____
 REVISE: _____
 VERIFY: _____

REFER TO SHEET PMP-1A FOR PAVEMENT MARKING SCHEDULE.
 ALL LANE WIDTHS ARE 12' UNLESS OTHERWISE SHOWN.

HNTB HNTB NORTH CAROLINA, P.C.
 343 E. Six Forks Road, Suite 200
 Raleigh, North Carolina 27609
 NC License No: C-1554

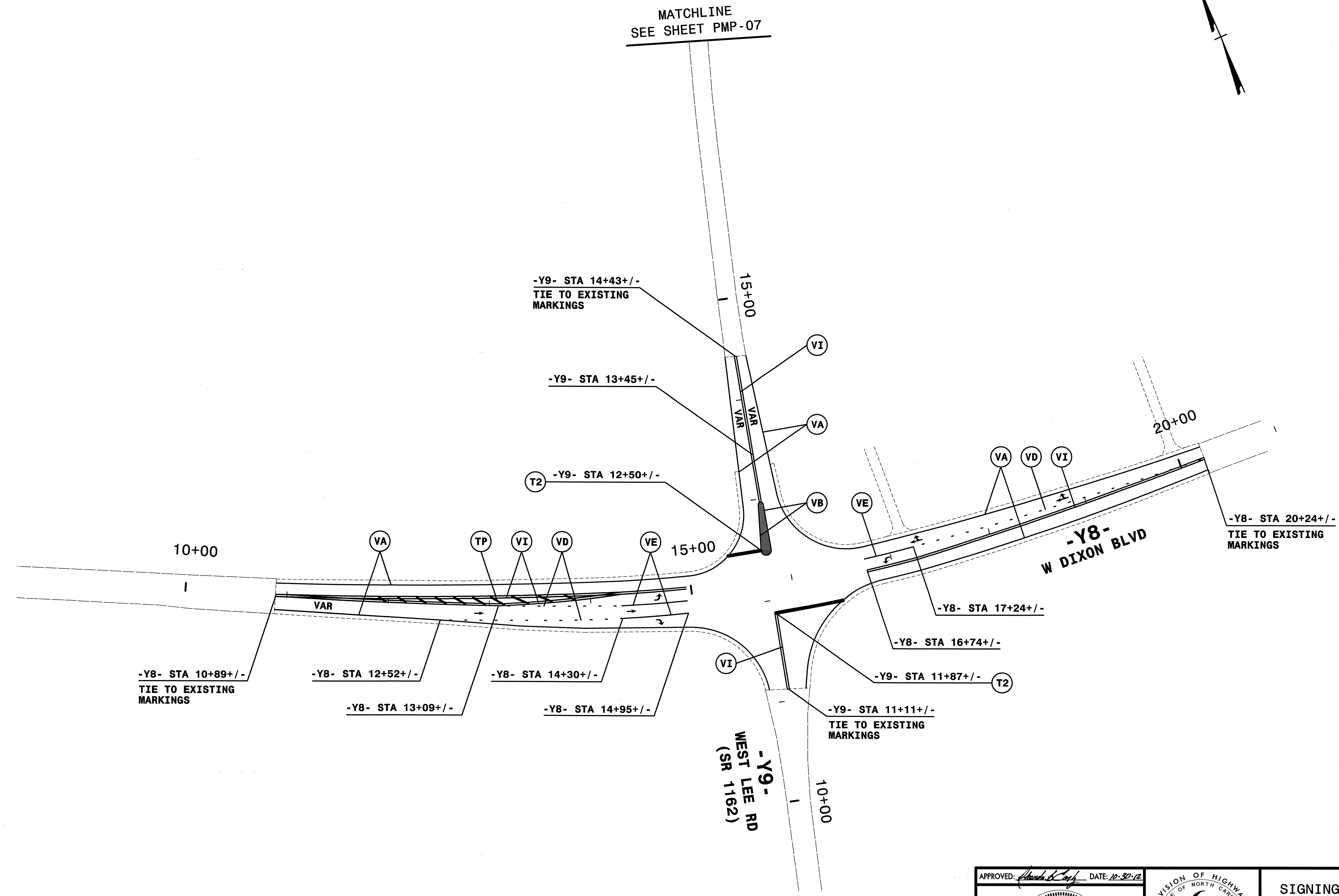
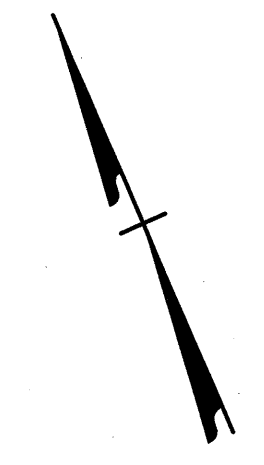
APPROVED: *Aranda S. Early* DATE: *8-17-12*
 SEAL
 NORTH CAROLINA PROFESSIONAL ENGINEER
 SEAL 023521
 WYONDA B. EARLY



SIGNING AND DELINEATION
FINAL PAVEMENT MARKING PLANS

8/17/99

MATCHLINE
SEE SHEET PMP-07



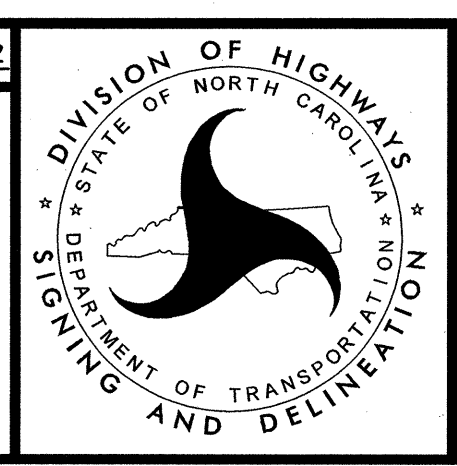
REVISIONS

QA/QC STAGE: _____
 REVIEW: _____
 CONCUR: _____
 REVISE: _____
 VERIFY: _____

REFER TO SHEET PMP-1A FOR PAVEMENT MARKING SCHEDULE.
 ALL LANE WIDTHS ARE 12' UNLESS OTHERWISE SHOWN.

HNTB
 HNTB NORTH CAROLINA, P.C.
 343 E. SIX FORKS ROAD, SUITE 200
 RALEIGH, NORTH CAROLINA 27609
 NC LICENSE NO: C-1554

APPROVED: *Handwritten Signature* DATE: 12-30-12
 SEAL
 NORTH CAROLINA PROFESSIONAL ENGINEER
 PIONDA B. EARLY
 SEAL 023521



SIGNING AND DELINEATION
FINAL PAVEMENT MARKING PLANS