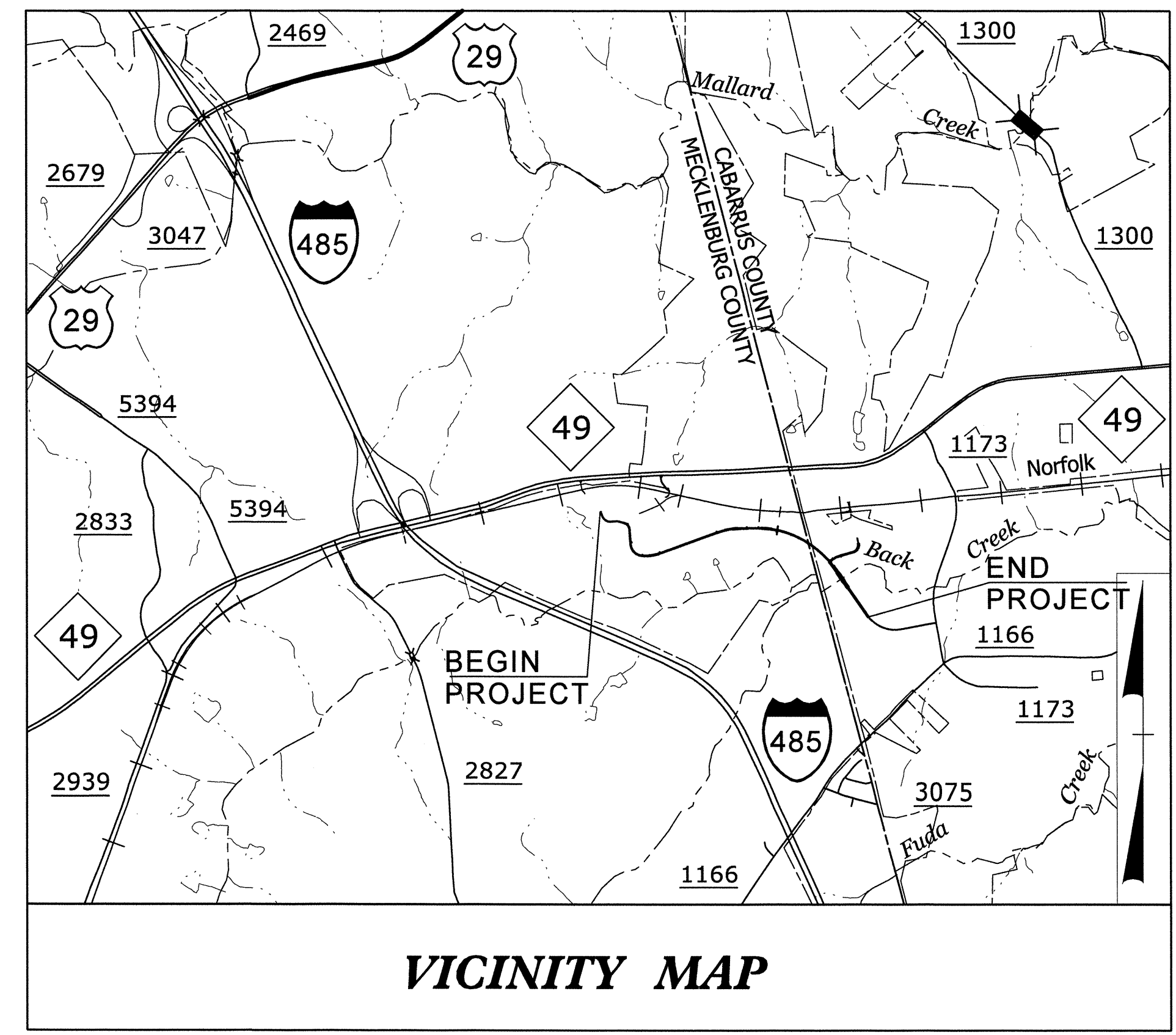
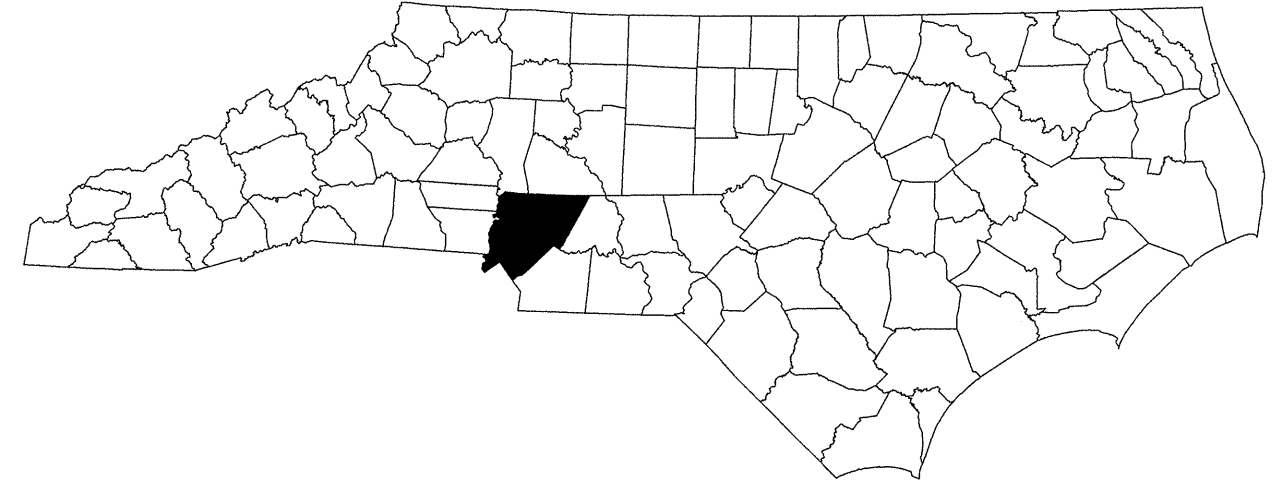


STATE OF NORTH CAROLINA
DIVISION OF HIGHWAYS



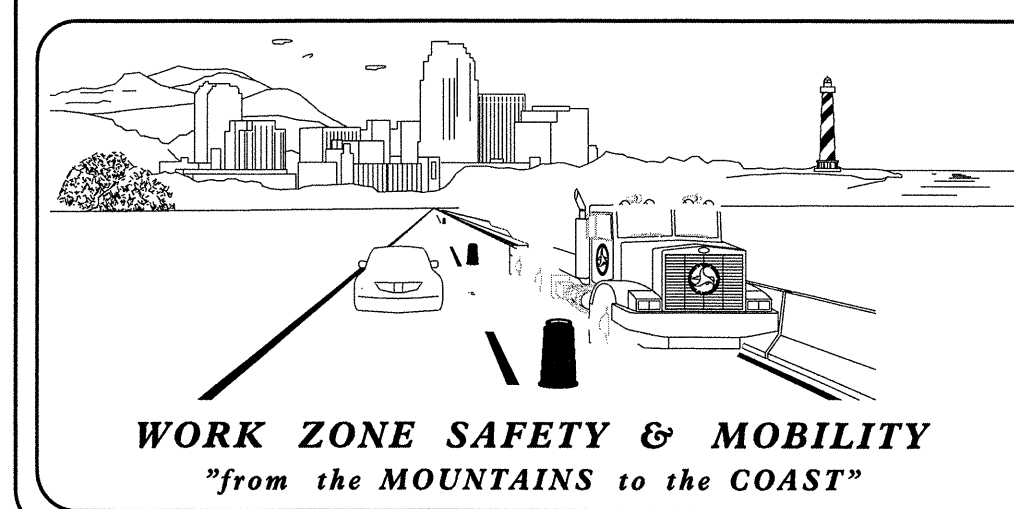
TRANSPORTATION MANAGEMENT PLAN
MECKLENBURG & CABARRUS COUNTIES



INDEX OF SHEETS

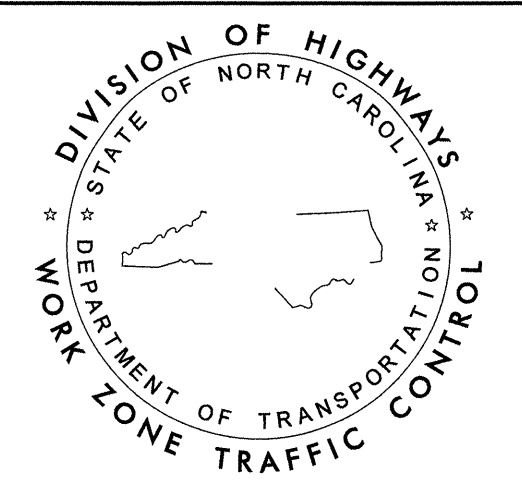
SHEET NO.	TITLE
TMP-1	TITLE SHEET, AND INDEX OF SHEETS
TMP-1A	LIST OF APPLICABLE ROADWAY STANDARD DRAWINGS, LEGEND, AND TEMPORARY PAVEMENT MARKING
TMP-2	GENERAL NOTES
TMP-3	PHASE I
TMP-4	PHASE II

2/5/2013 P:\TIP\5208e\TrafficControl\CP\5208e_tmp_title.dgn Florence & Hutcheson



N.C.D.O.T. WORK ZONE TRAFFIC CONTROL
 1561 MAIL SERVICE CENTER (MSC) RALEIGH, NC 27699-1561
 750 N. GREENFIELD PARKWAY, GARNER, NC 27529 (DELIVERY)
 PHONE: (919) 773-2800 FAX: (919) 771-2745

J. S. BOURNE, P.E. STATE TRAFFIC MANAGEMENT ENGINEER
 G. L. GETTIER, P.E. TRAFFIC CONTROL PROJECT ENGINEER
 J. W. GILSTRAP TRAFFIC CONTROL PROJECT DESIGN ENGINEER
 TRAFFIC CONTROL DESIGN ENGINEER



Florence & Hutcheson
 CONSULTING ENGINEERS
 5121 Kingdom Way, Suite 100 Raleigh, NC 27607
 NC License No: P-0258

APPROVED: *[Signature]*
 DATE: 2-5-13

SEAL

ROADWAY STANDARD DRAWINGS

THE FOLLOWING ROADWAY STANDARDS AS SHOWN IN "ROADWAY STANDARD DRAWINGS" - PROJECT SERVICES UNIT - N.C. DEPARTMENT OF TRANSPORTATION - RALEIGH, N.C., DATED JANUARY 2012 ARE APPLICABLE TO THIS PROJECT AND BY REFERENCE HEREBY ARE CONSIDERED A PART OF THESE PLANS:

STD. NO.	TITLE
1101.01	WORK ZONE ADVANCE WARNING SIGNS
1101.02	TEMPORARY LANE CLOSURES
1101.03	TEMPORARY ROAD CLOSURES
1101.04	TEMPORARY SHOULDER CLOSURES
1101.05	WORK ZONE VEHICLE ACCESSES
1101.11	TRAFFIC CONTROL DESIGN TABLES
1110.01	STATIONARY WORK ZONE SIGNS
1110.02	PORTABLE WORK ZONE SIGNS
1130.01	DRUMS
1135.01	CONES
1145.01	BARRICADES
1150.01	FLAGGING DEVICES
1180.01	SKINNY-DRUM
1205.01	PAVEMENT MARKINGS - LINE TYPES & OFFSETS
1205.02	PAVEMENT MARKINGS - 2 LANE & MULTILANE ROADWAYS
1205.12	PAVEMENT MARKINGS - BRIDGES
1250.01	PAVEMENT MARKER SPACING
1251.01	RAISED PAVEMENT MARKERS - (TEMPORARY)

LEGEND

GENERAL

- DIRECTION OF TRAFFIC FLOW
- DIRECTION OF PEDESTRIAN TRAFFIC FLOW
- EXIST. PVMT.
- NORTH ARROW
- PROPOSED PVMT.

- WORK AREA
- WORK CONTINUED
- REMOVAL

TRAFFIC CONTROL DEVICES

- BARRICADE (TYPE III)
- CONE
- DRUM SKINNY DRUM TUBULAR MARKER
- TEMPORARY CRASH CUSHION
- FLASHING ARROW PANEL (TYPE C)
- FLAGGER
- LAW ENFORCEMENT
- TRUCK MOUNTED IMPACT ATTENUATOR (TMIA)
- CHANGEABLE MESSAGE SIGN

TEMPORARY SIGNING

- PORTABLE SIGN
- STATIONARY SIGN
- STATIONARY OR PORTABLE SIGN

SIGNALS

- EXISTING
- PROPOSED
- TEMPORARY

PAVEMENT MARKINGS

- EXISTING LINES
- TEMPORARY LINES

PAVEMENT MARKERS

- CRYSTAL/CRYSTAL
- CRYSTAL/RED
- YELLOW/YELLOW

PAVEMENT MARKING SYMBOLS

- PAVEMENT MARKING SYMBOLS

TEMPORARY PAVEMENT MARKING

SYMBOL	DESCRIPTION
PAINT (4")	
PA	WHITE EDGELINE
PI	DOUBLE YELLOW CENTERLINE
P8	2' - 6' WHITE MINISKIP
PAINT (24")	
P4	WHITE STOP BAR
REMOVABLE TAPE (4")	
CA	WHITE EDGELINE
CI	DOUBLE YELLOW CENTERLINE
TEMPORARY RAISED MARKERS	
MH	YELLOW/YELLOW

APPROVED: DATE: 2-5-13 		<h3>ROADWAY STANDARD DRAWINGS & LEGEND</h3>
-----------------------------	--	---

GENERAL NOTES



PROJ. REFERENCE NO.	SHEET NO.
P-5208E	TMP-2

CHANGES MAY BE REQUIRED WHEN PHYSICAL DIMENSIONS IN THE DETAIL DRAWINGS, STANDARD DETAILS, AND ROADWAY DETAILS ARE NOT ATTAINABLE TO MEET FIELD CONDITIONS OR RESULT IN DUPLICATE OR UNDESIRED OVERLAPPING OF DEVICES. MODIFICATION MAY INCLUDE: MOVING, SUPPLEMENTING, COVERING, OR REMOVAL OF DEVICES AS DIRECTED BY THE ENGINEER.

THE FOLLOWING GENERAL NOTES APPLY AT ALL TIMES FOR THE DURATION OF THE CONSTRUCTION PROJECT EXCEPT WHEN OTHERWISE NOTED IN THE PLAN OR DIRECTED BY THE ENGINEER.

LANE AND SHOULDER CLOSURE REQUIREMENTS

- A) REMOVE LANE CLOSURE DEVICES FROM THE LANE WHEN WORK IS NOT BEING PERFORMED BEHIND THE LANE CLOSURE OR WHEN A LANE CLOSURE IS NO LONGER NEEDED OR AS DIRECTED BY THE ENGINEER.
- B) WHEN PERSONNEL AND/OR EQUIPMENT ARE WORKING WITHIN 15 FT OF AN OPEN TRAVEL LANE, CLOSE THE NEAREST OPEN SHOULDER USING ROADWAY STANDARD DRAWING NO. 1101.04 UNLESS THE WORK AREA IS PROTECTED BY BARRIER OR GUARDRAIL OR A LANE CLOSURE IS INSTALLED.
- C) WHEN PERSONNEL AND/OR EQUIPMENT ARE WORKING ON THE SHOULDER ADJACENT TO AN UNDIVIDED FACILITY AND WITHIN 5 FT OF AN OPEN TRAVEL LANE, CLOSE THE NEAREST OPEN TRAVEL LANE USING ROADWAY STANDARD DRAWING NO. 1101.02 UNLESS THE WORK AREA IS PROTECTED BY BARRIER OR GUARDRAIL.

WHEN PERSONNEL AND/OR EQUIPMENT ARE WORKING ON THE SHOULDER ADJACENT TO A DIVIDED FACILITY AND WITHIN 10 FT OF AN OPEN TRAVEL LANE, CLOSE THE NEAREST OPEN TRAVEL LANE USING ROADWAY STANDARD DRAWING NO. 1101.02 UNLESS THE WORK AREA IS PROTECTED BY BARRIER OR GUARDRAIL.
- D) WHEN PERSONNEL AND/OR EQUIPMENT ARE WORKING WITHIN A LANE OF TRAVEL OF AN UNDIVIDED OR DIVIDED FACILITY, CLOSE THE LANE ACCORDING TO THE TRAFFIC CONTROL PLANS, ROADWAY STANDARD DRAWINGS, OR AS DIRECTED BY THE ENGINEER. CONDUCT THE WORK SO THAT ALL PERSONNEL AND/OR EQUIPMENT REMAIN WITHIN THE CLOSED TRAVEL LANE.

TRAFFIC PATTERN ALTERATIONS

- E) NOTIFY THE ENGINEER TWENTY ONE (21) CALENDAR DAYS PRIOR TO ANY TRAFFIC PATTERN ALTERATION.

SIGNING

- F) INSTALL ADVANCE WORK ZONE WARNING SIGNS WHEN WORK IS WITHIN 40 FT FROM THE EDGE OF TRAVEL LANE AND NO MORE THAN THREE (3) DAYS PRIOR TO THE BEGINNING OF CONSTRUCTION.
- G) PROVIDE SIGNING AND DEVICES REQUIRED TO CLOSE THE ROAD ACCORDING TO THE ROADWAY STANDARD DRAWINGS AND TRAFFIC CONTROL PLANS.

PROVIDE SIGNING REQUIRED FOR THE OFF-SITE DETOUR ROUTE AS SHOWN IN THE TRAFFIC CONTROL PLANS.
- H) COVER OR REMOVE ALL SIGNS AND DEVICES REQUIRED TO CLOSE THE ROAD WHEN ROAD CLOSURE IS NOT IN OPERATION.

COVER OR REMOVE ALL SIGNS REQUIRED FOR THE OFF-SITE DETOUR WHEN THE DETOUR IS NOT IN OPERATION.
- I) ENSURE ALL NECESSARY SIGNING IS IN PLACE PRIOR TO ALTERING ANY TRAFFIC PATTERN.

TRAFFIC CONTROL DEVICES

- J) WHEN LANE CLOSURES ARE NOT IN EFFECT, SPACE CHANNELIZING DEVICES IN WORK AREAS NO GREATER IN FEET THAN TWICE THE POSTED SPEED LIMIT (MPH) EXCEPT, 10 FT ON-CENTER IN RADII, AND 3 FT OFF THE EDGE OF AN OPEN TRAVELWAY. REFER TO STANDARD SPECIFICATIONS FOR ROADS AND STRUCTURES SECTIONS 1130 (DRUMS), 1180 (SKINNY DRUMS) FOR ADDITIONAL REQUIREMENTS.
- K) PLACE TYPE III BARRICADES, WITH "ROAD CLOSED" SIGN R11-2 ATTACHED, OF SUFFICIENT LENGTH TO CLOSE ENTIRE ROADWAY.

PAVEMENT MARKINGS AND MARKERS

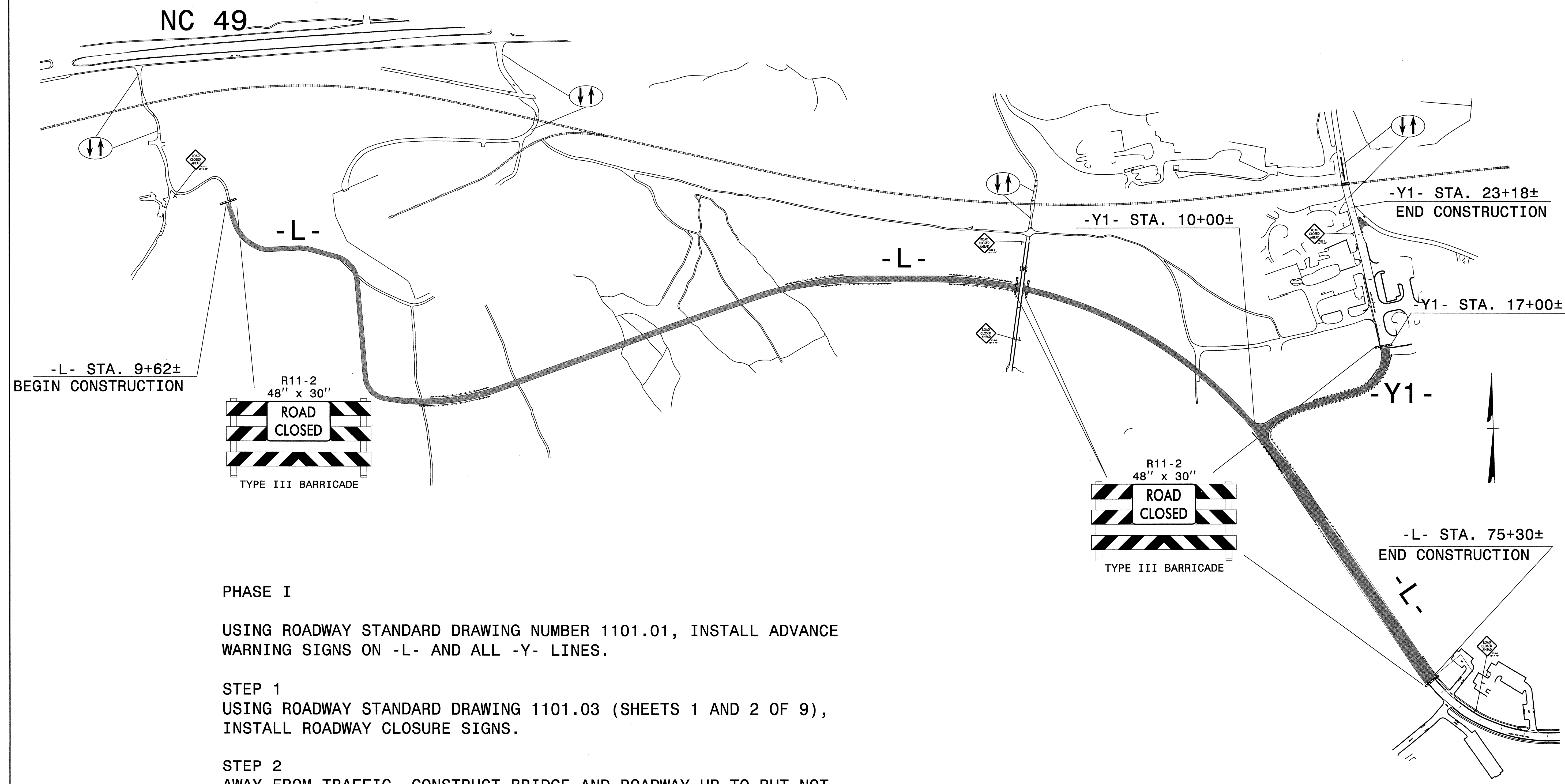
- L) INSTALL PAVEMENT MARKINGS AND PAVEMENT MARKERS ON THE FINAL SURFACE AS SHOWN IN THE PAVEMENT MARKING PLAN.
- M) INSTALL TEMPORARY PAVEMENT MARKINGS AND TEMPORARY PAVEMENT MARKERS ON INTERIM LAYERS OF PAVEMENT AS FOLLOWS:

ROAD NAME	MARKING	MARKER
ALL ROADS BRIDGES	PAINT REMOVABLE TAPE	TEMPORARY RAISED TEMPORARY RAISED

- N) TIE PROPOSED PAVEMENT MARKING LINES TO EXISTING PAVEMENT MARKING LINES.
- O) REMOVE/REPLACE ANY CONFLICTING/DAMAGED PAVEMENT MARKINGS AND MARKERS BY THE END OF EACH DAY'S OPERATION.

APPROVED: <i>[Signature]</i> DATE: 2-5-13	GENERAL NOTES									
	SCALE: NONE									
	DATE: JAN-13									
	DWG. BY: TAG									
	DESIGN BY: TAG									
	REVIEWED BY: MTR									
		<table border="1"> <tr> <th colspan="2">REVISIONS</th> </tr> <tr> <td> </td> <td> </td> </tr> <tr> <td> </td> <td> </td> </tr> <tr> <td> </td> <td> </td> </tr> </table>	REVISIONS							
REVISIONS										

0503DEL_P21a1



PHASE I

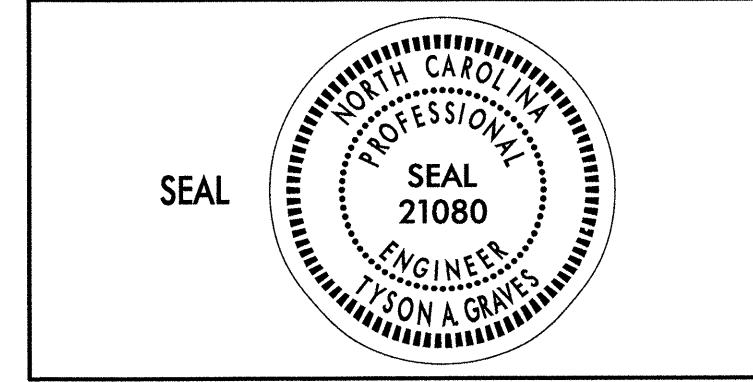
USING ROADWAY STANDARD DRAWING NUMBER 1101.01, INSTALL ADVANCE WARNING SIGNS ON -L- AND ALL -Y- LINES.

STEP 1
 USING ROADWAY STANDARD DRAWING 1101.03 (SHEETS 1 AND 2 OF 9), INSTALL ROADWAY CLOSURE SIGNS.

STEP 2
 AWAY FROM TRAFFIC, CONSTRUCT BRIDGE AND ROADWAY UP TO BUT NOT INCLUDING THE FINAL LAYER OF SURFACE COURSE FROM:

- L- STA. 9+62± TO -L- STA. 75+30±
- Y1- STA. 10+00± TO -Y1- STA. 17+00±
- Driveway near -Y1- STA. 22+00±

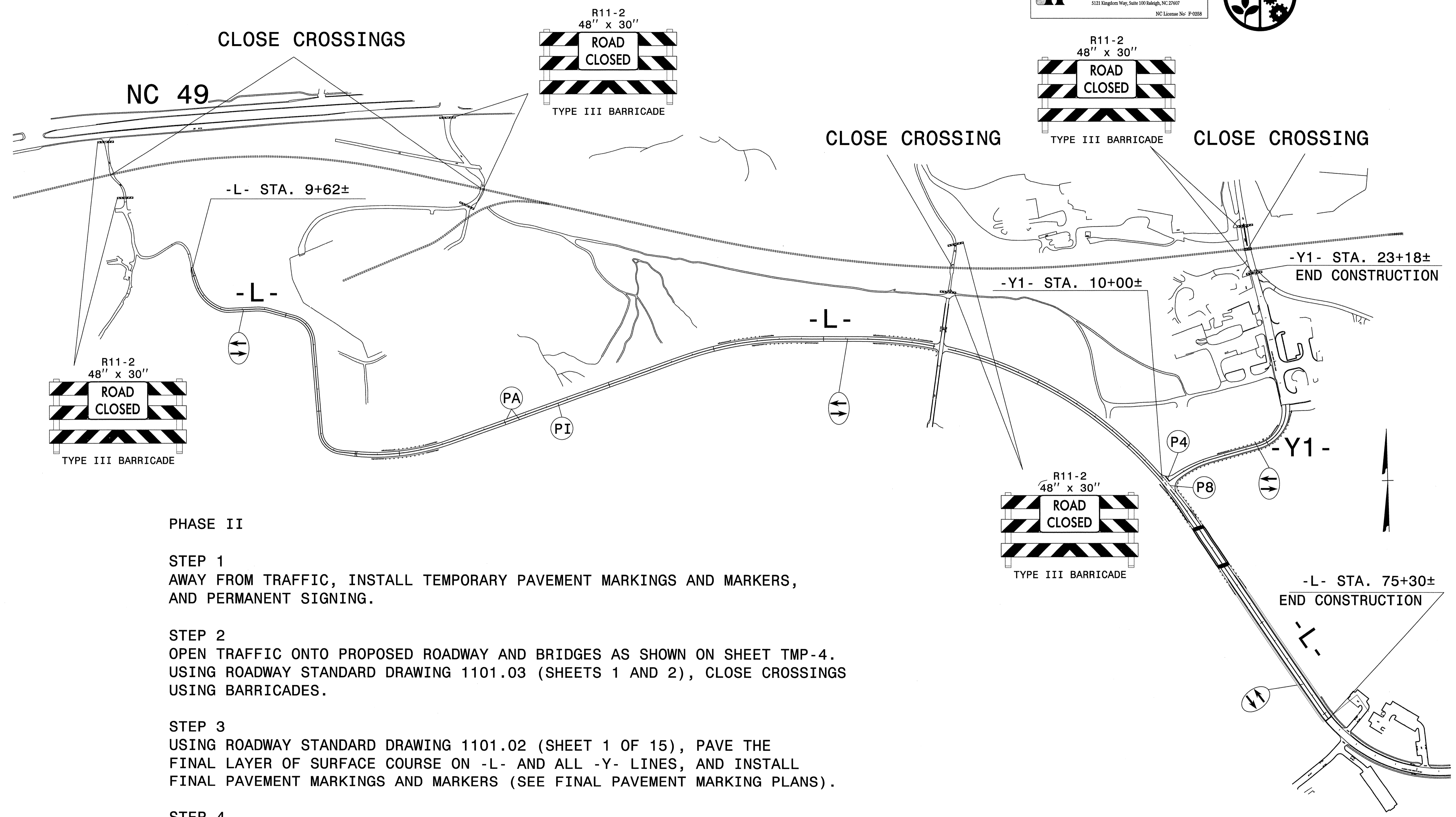
APPROVED: *[Signature]* DATE: 2-5-13



PHASE I OVERVIEW

SCALE: NONE		REVISIONS
DATE: JAN-13		
DWG. BY: TAG		
DESIGN BY: TAG		
REVIEWED BY: MTR		

2/5/2013
 P:\TIP\5208E\TrafficControl\CPA\5208e_tmp_pi_ovr.dgn
 Florence & Hutcheson



PHASE II

- STEP 1**
AWAY FROM TRAFFIC, INSTALL TEMPORARY PAVEMENT MARKINGS AND MARKERS, AND PERMANENT SIGNING.
- STEP 2**
OPEN TRAFFIC ONTO PROPOSED ROADWAY AND BRIDGES AS SHOWN ON SHEET TMP-4. USING ROADWAY STANDARD DRAWING 1101.03 (SHEETS 1 AND 2), CLOSE CROSSINGS USING BARRICADES.
- STEP 3**
USING ROADWAY STANDARD DRAWING 1101.02 (SHEET 1 OF 15), PAVE THE FINAL LAYER OF SURFACE COURSE ON -L- AND ALL -Y- LINES, AND INSTALL FINAL PAVEMENT MARKINGS AND MARKERS (SEE FINAL PAVEMENT MARKING PLANS).
- STEP 4**
REMOVE TEMPORARY DEVICES AS DIRECTED BY THE ENGINEER, AND OPEN TO TRAFFIC.

2/5/2013
 P:\TIP\05208e\TrafficControl\TCP\05208e_tmp_pii.ovl.dgn
 Florence & Hutcheson

APPROVED: <i>[Signature]</i> DATE: 2-5-13	PHASE II OVERVIEW	
SEAL 	SCALE: NONE	
	DATE: JAN-13	
	DWG. BY: TAG	
	DESIGN BY: TAG	
REVIEWED BY: MTR	REVISIONS	