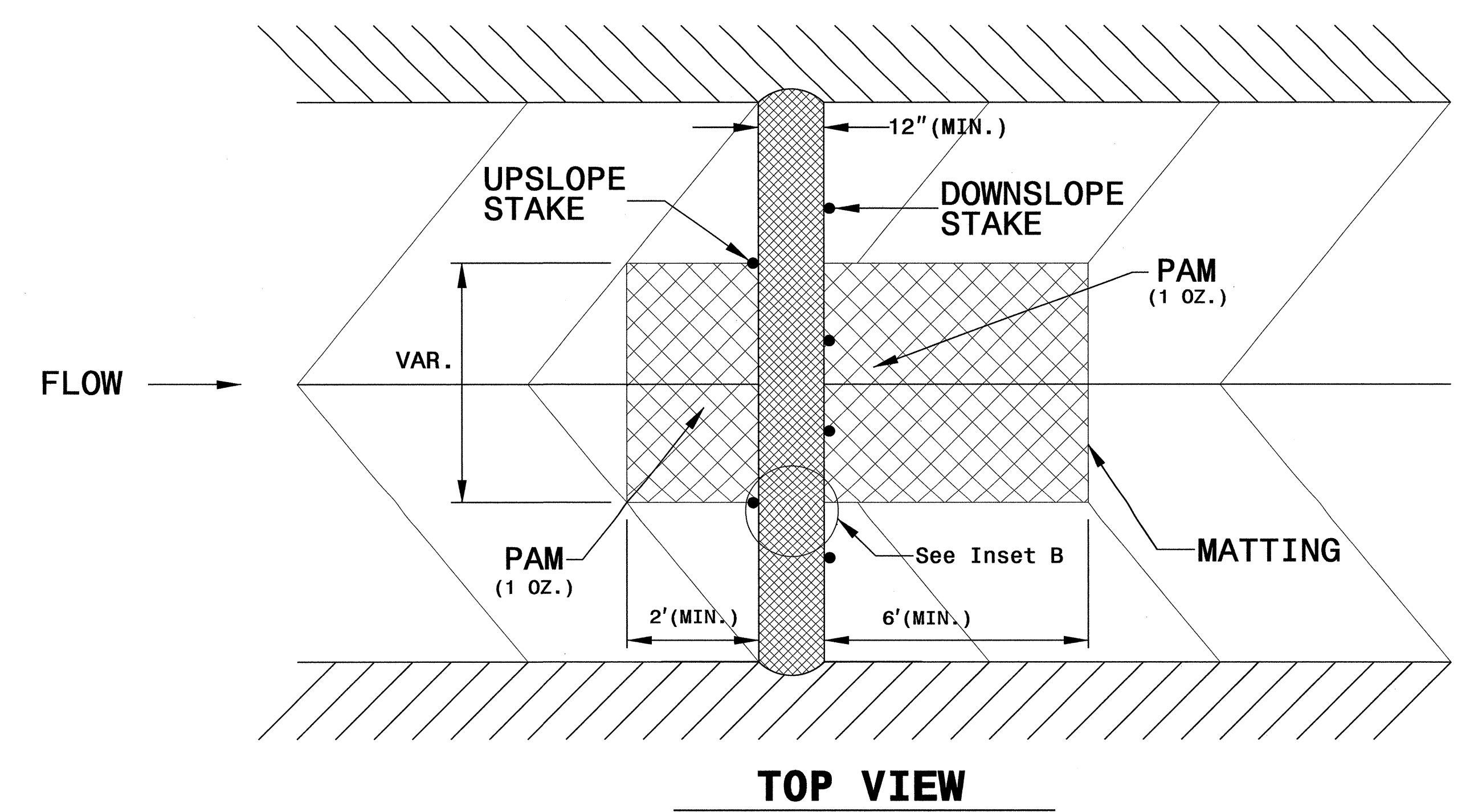
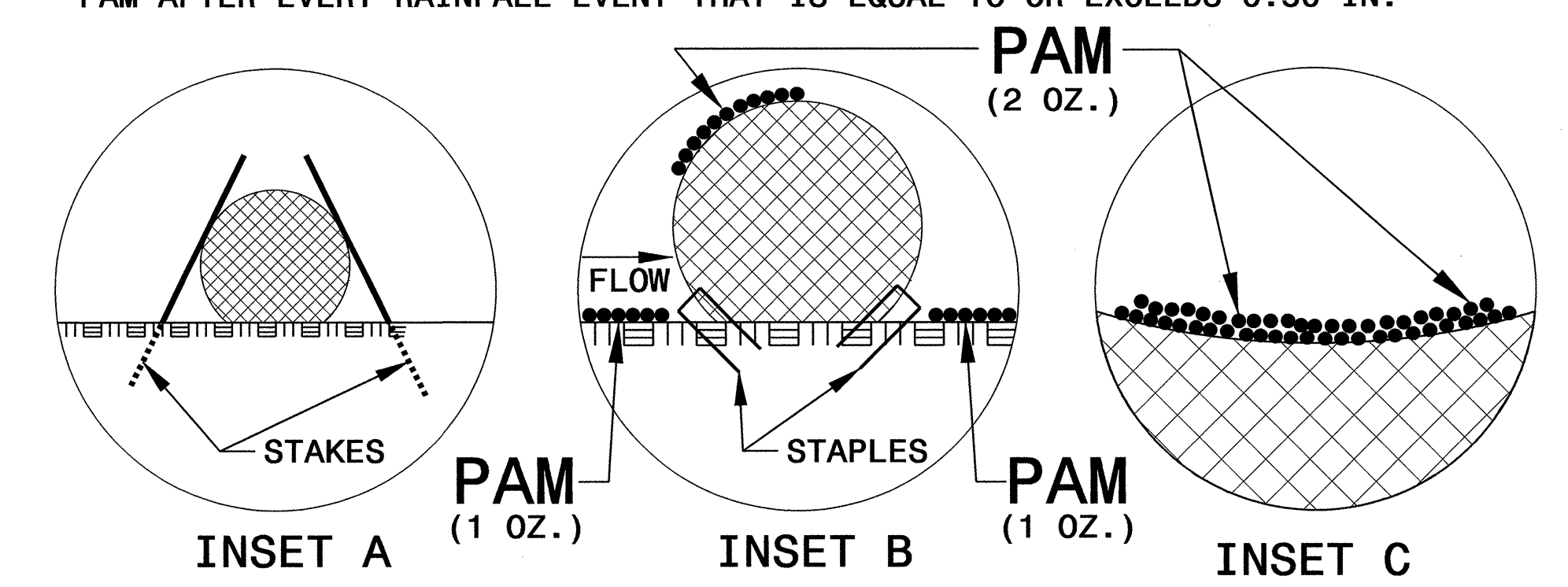
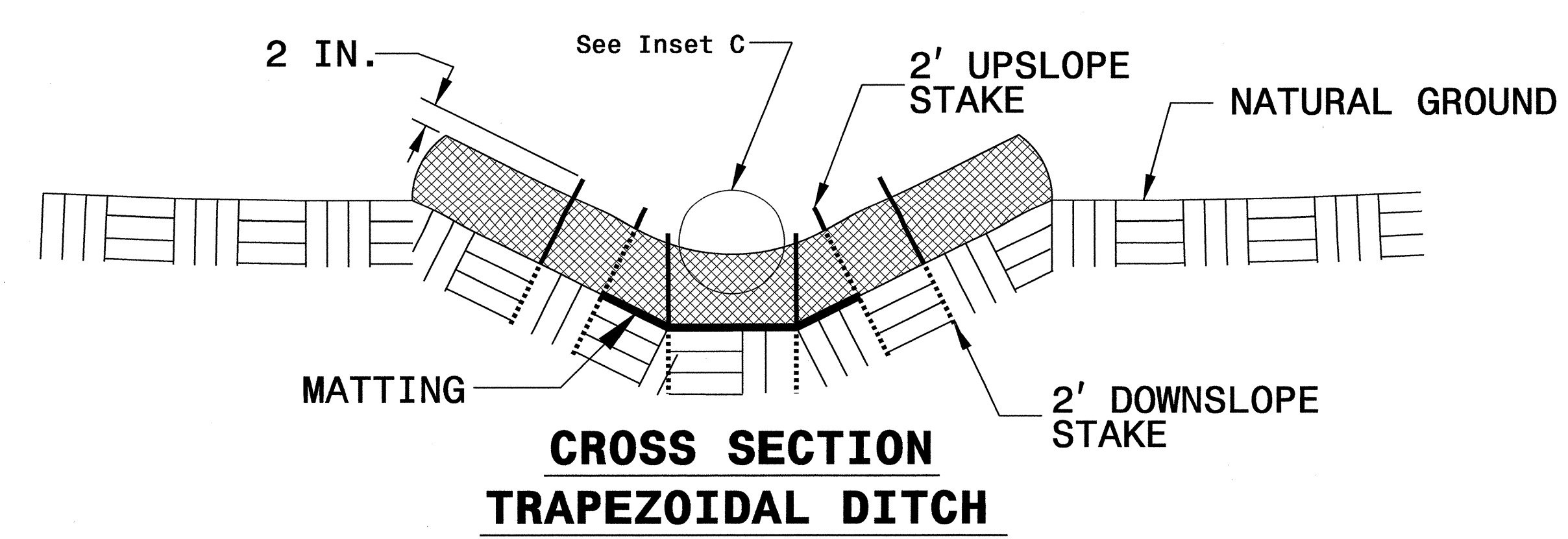
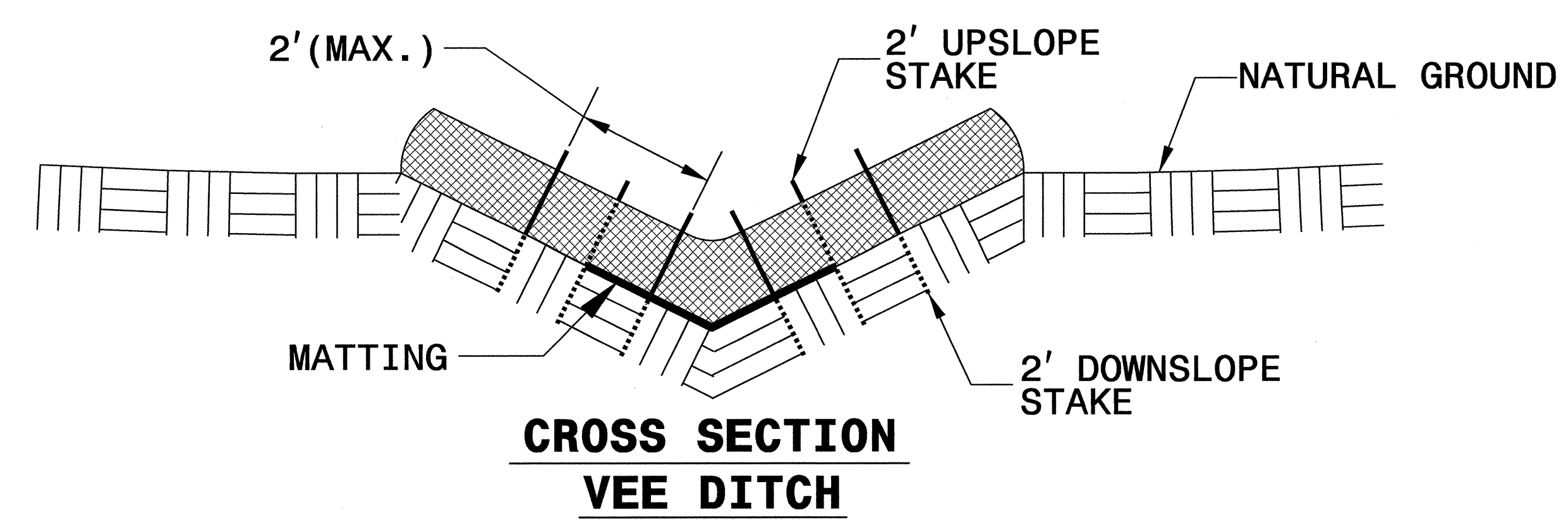
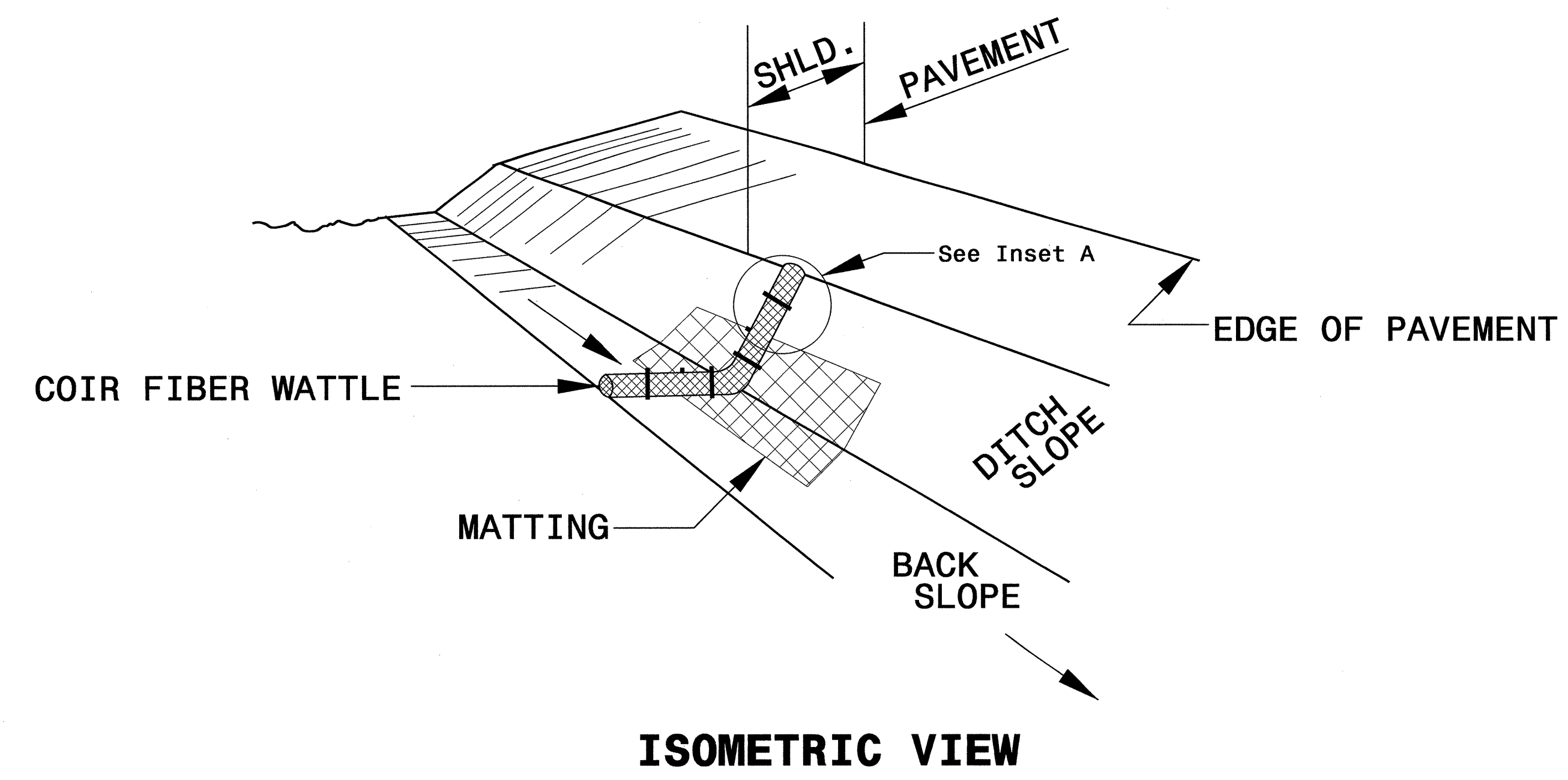


PROJECT REFERENCE NO. B-4561	SHEET NO. EC-2
RW SHEET NO.	
ROADWAY DESIGN ENGINEER	HYDRAULICS ENGINEER

COIR FIBER WATTLE WITH POLYACRYLAMIDE (PAM) DETAIL

NOTES:

- USE MINIMUM 12 IN. DIAMETER COIR FIBER (COCONUT FIBER) WATTLE.
- USE 2 FT. WOODEN STAKES WITH A 2 IN. BY 2 IN. NOMINAL CROSS SECTION.
- ONLY INSTALL WATTLE(S) TO A HEIGHT IN DITCH SO FLOW WILL NOT WASH AROUND WATTLE AND SCOUR DITCH SLOPES AND AS DIRECTED.
- INSTALL A MINIMUM OF 2 UPSLOPE STAKES AND 4 DOWNSLOPE STAKES AT AN ANGLE TO WEDGE WATTLE TO BOTTOM OF DITCH.
- PROVIDE STAPLES MADE OF 0.125 IN. DIAMETER STEEL WIRE FORMED INTO A U SHAPE NOT LESS THAN 12" IN LENGTH.
- INSTALL STAPLES APPROXIMATELY EVERY 1 LINEAR FOOT ON BOTH SIDES OF WATTLE AND AT EACH END TO SECURE IT TO THE SOIL.
- INSTALL MATTING IN ACCORDANCE WITH SECTION 1631 OF THE STANDARD SPECIFICATIONS.
- PRIOR TO POLYACRYLAMIDE (PAM) APPLICATION, OBTAIN A SOIL SAMPLE FROM PROJECT LOCATION, AND FROM OFFSITE MATERIAL, AND ANALYZE FOR APPROPRIATE PAM FLOCCULANT TO BE APPLIED TO EACH WATTLE.
- INITIALLY APPLY 2 OUNCES OF ANIONIC OR NEUTRALLY CHARGED PAM OVER WATTLE WHERE WATER WILL FLOW AND 1 OUNCE OF PAM ON MATTING ON EACH SIDE OF WATTLE. REAPPLY PAM AFTER EVERY RAINFALL EVENT THAT IS EQUAL TO OR EXCEEDS 0.50 IN.

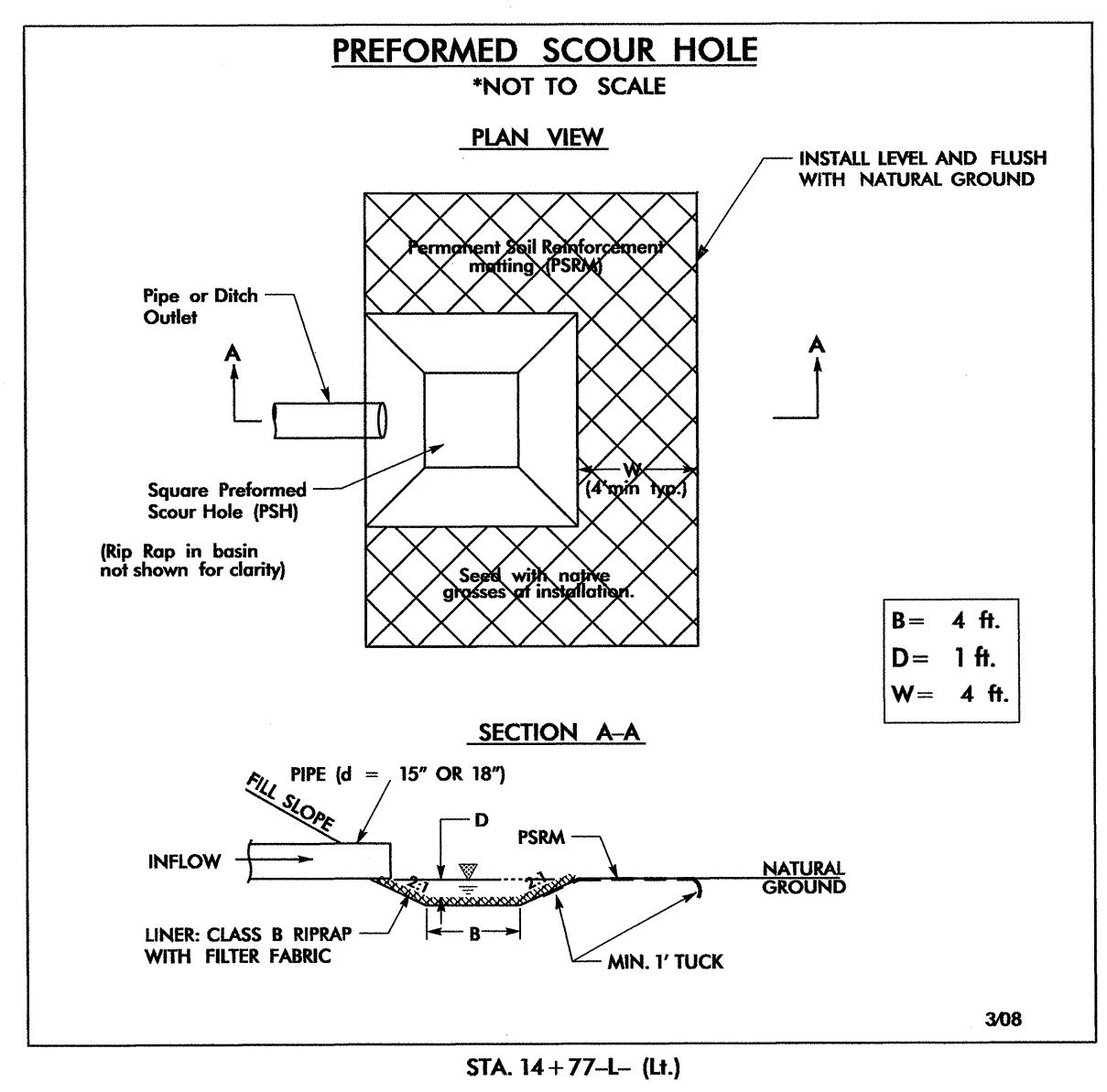
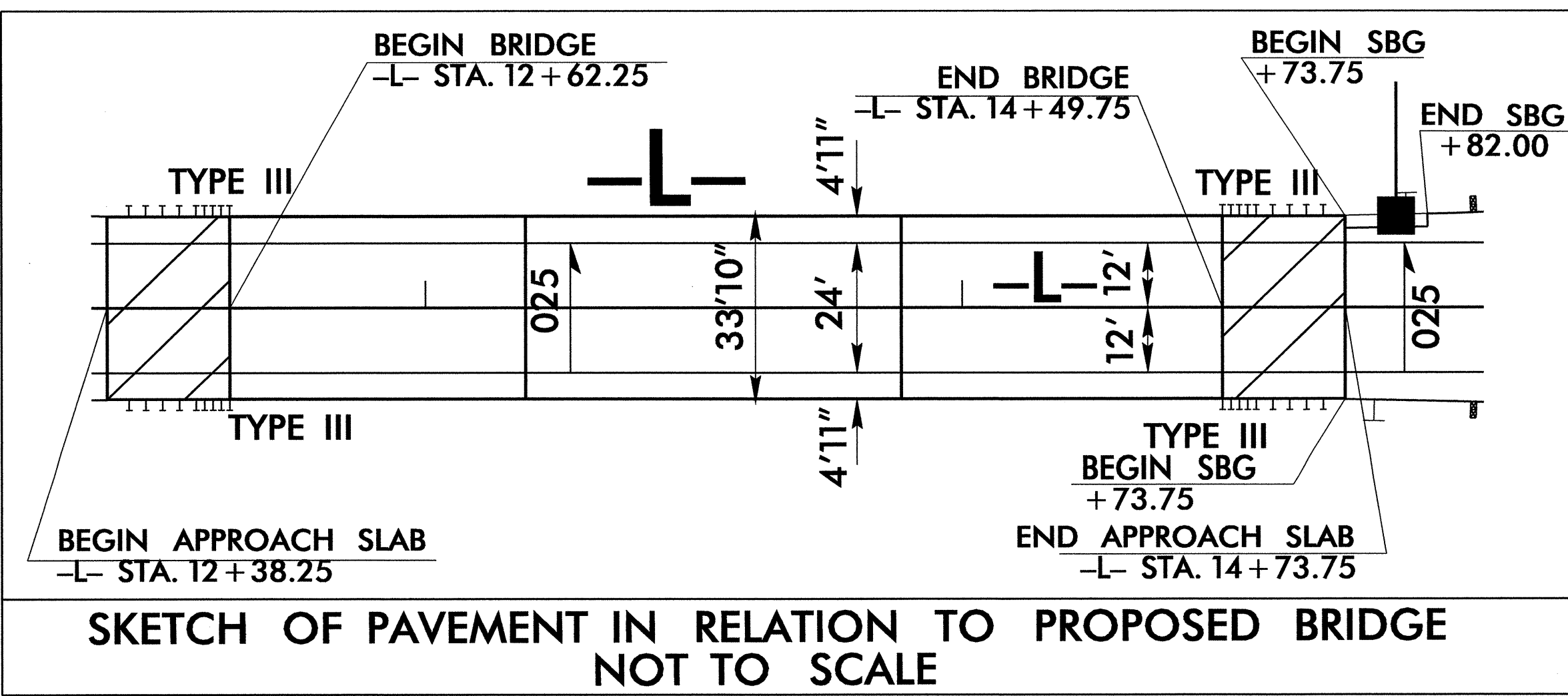


DIVISION OF HIGHWAYS
STATE OF NORTH CAROLINA

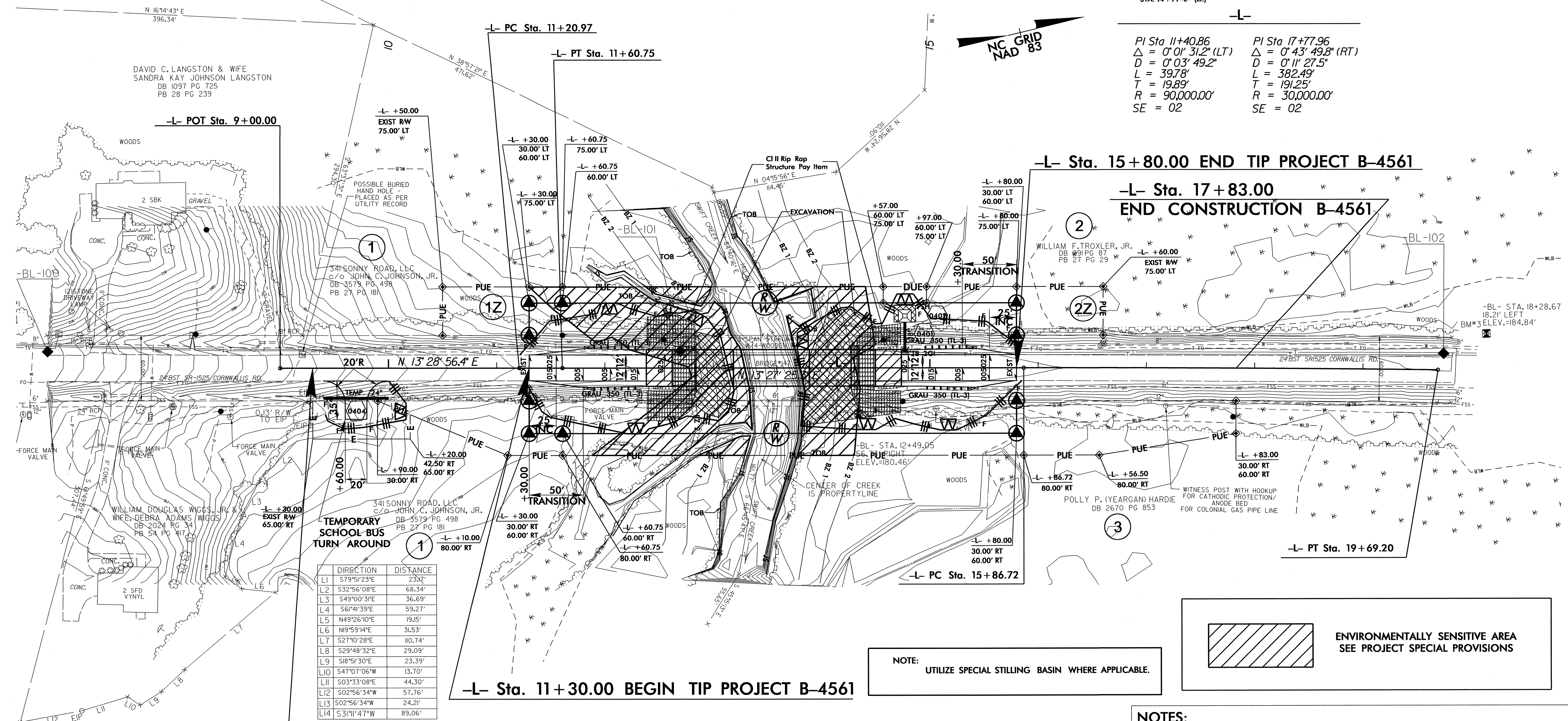
PROJECT REFERENCE NO. <i>B-4561</i>	SHEET NO. <i>EC-3</i>
ROADWAY DESIGN ENGINEER	HYDRAULICS ENGINEER

SOIL STABILIZATION TIMEFRAMES

<i>SITE DESCRIPTION</i>	<i>STABILIZATION TIME</i>	<i>TIMEFRAME EXCEPTIONS</i>
PERIMETER DIKES, SWALES, DITCHES AND SLOPES	7 DAYS	NONE
HIGH QUALITY WATER (HQW) ZONES	7 DAYS	NONE
SLOPES STEEPER THAN 3:1	7 DAYS	IF SLOPES ARE 10' OR LESS IN LENGTH AND ARE NOT STEEPER THAN 2:1, 14 DAYS ARE ALLOWED.
SLOPES 3:1 OR FLATTER	14 DAYS	7 DAYS FOR SLOPES GREATER THAN 50' IN LENGTH.
ALL OTHER AREAS WITH SLOPES FLATTER THAN 4:1	14 DAYS	NONE, EXCEPT FOR PERIMETERS AND HQW ZONES.



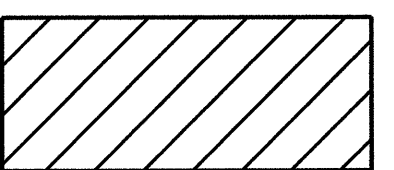
CLEARING AND GRUBBING
EROSION CONTROL FOR
CONSTRUCTION SHEET 4



PI Sta 11+40.86
 $\Delta = 0' 01' 31.2" (LT)$
 $D = 0' 03' 49.2"$
 $L = 39.78'$
 $T = 19.89'$
 $R = 90,000.00'$
 $SE = 02$

PI Sta 17+77.96
 $\Delta = 0' 43' 49.8" (RT)$
 $D = 0' 11' 27.5"$
 $L = 382.49'$
 $T = 191.25'$
 $R = 30,000.00'$
 $SE = 02$

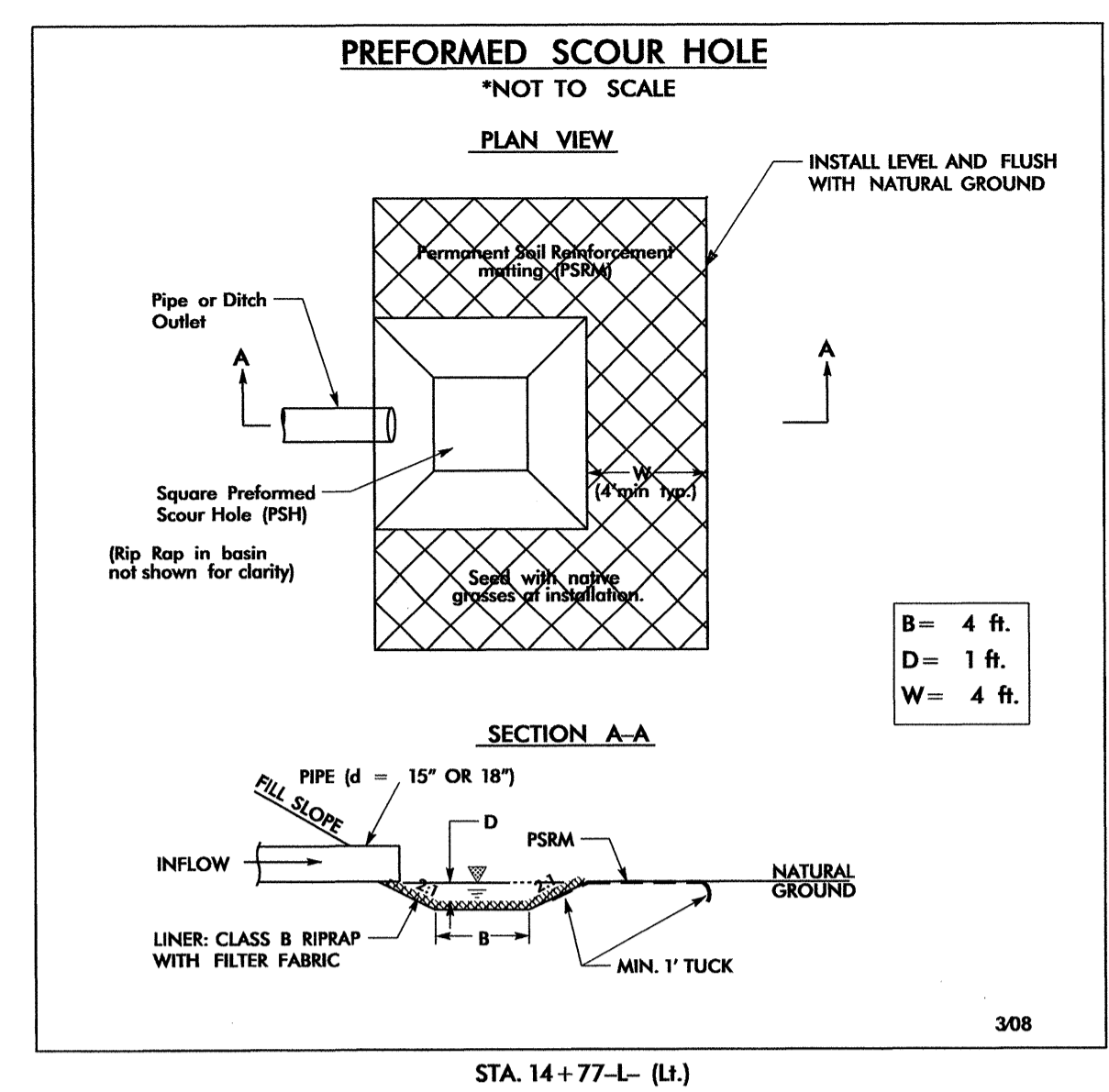
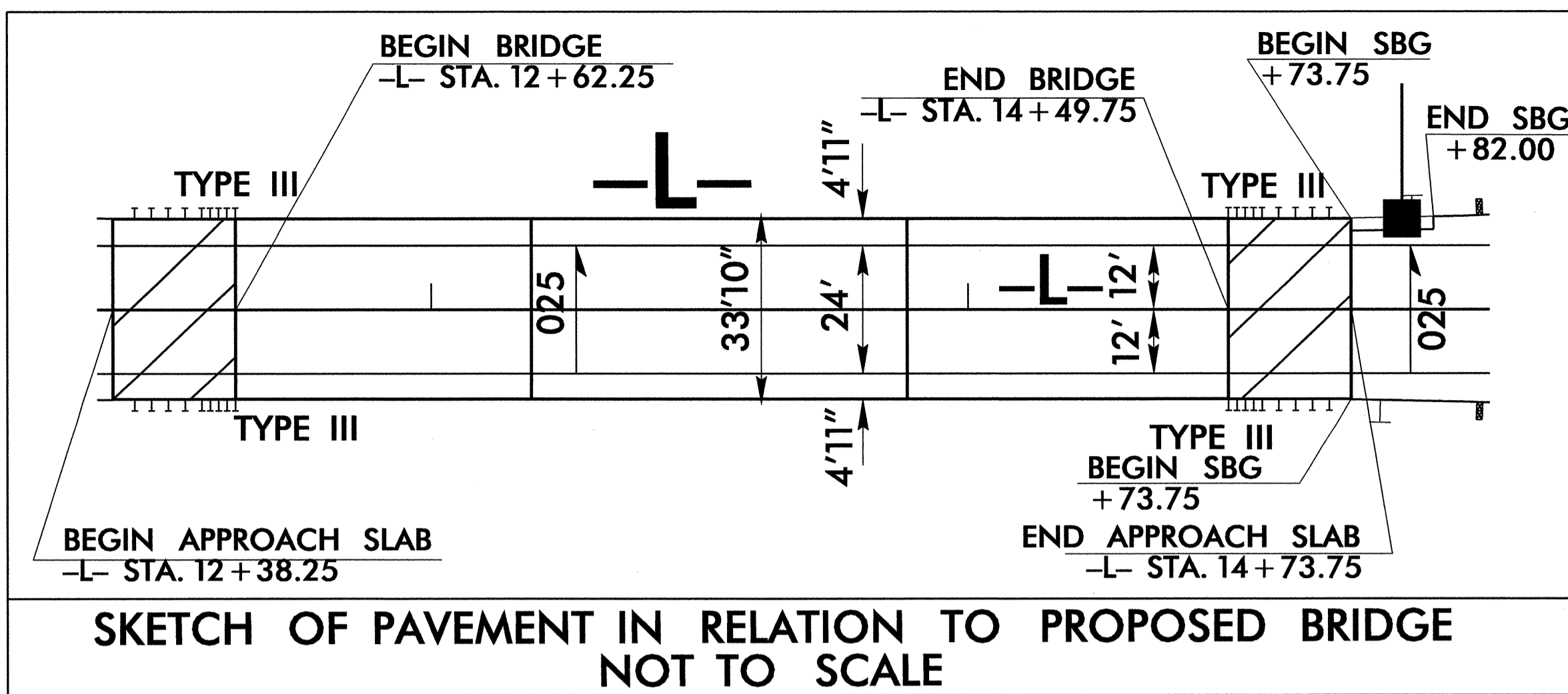
NOTE:
UTILIZE SPECIAL STILLING BASIN WHERE APPLICABLE.

 ENVIRONMENTALLY SENSITIVE AREA
SEE PROJECT SPECIAL PROVISIONS

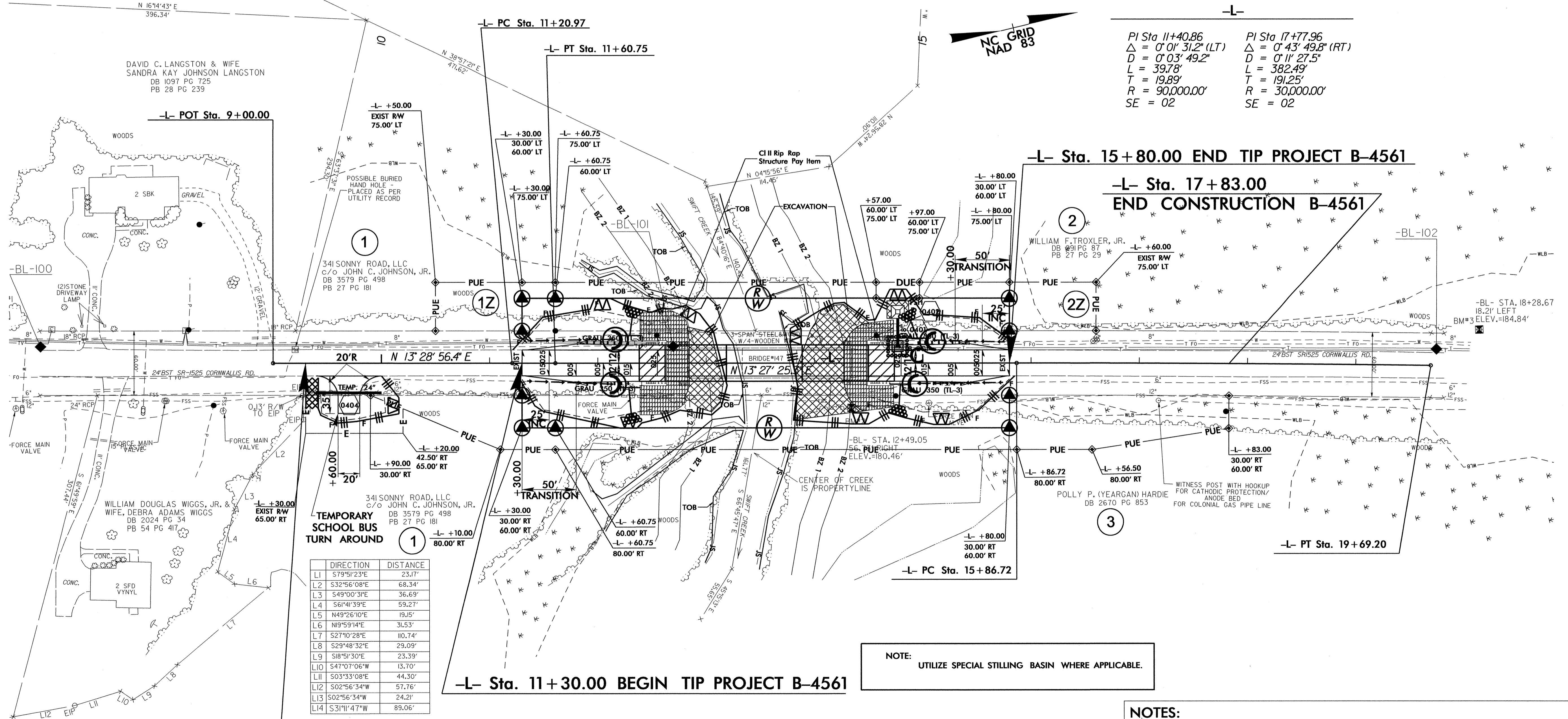
NOTE:
PLACE TEMPORARY ROCK SEDIMENT DAMS TYPE - B
AND TEMPORARY ROCK SILT CHECKS TYPE - A AT
DRAINAGE OUTLETS.

NOTES:
1. SEE SHEET 5 FOR -L- PROFILE.
2. SEE SHEETS S-1 THROUGH S-?? FOR STRUCTURE PLANS.

8/17/09
13-DEC-2012 08:42: R:\Environmentals\B-4561\EC-psh.dgn
13-DEC-2012 08:42: R:\Environmentals\B-4561\EC-psh.dgn



Place Matting for Erosion Control on Fill Slopes as Work Allows.



PI Sta 11+40.86
 $\Delta = 0' 01' 31.2''$ (LT)
 $D = 0' 03' 49.2''$
 $L = 397.8'$
 $T = 19.89'$
 $R = 90,000.00'$
 $SE = 02$

PI Sta 17+77.96
 $\Delta = 0' 43' 49.8''$ (RT)
 $D = 0' 11' 27.5''$
 $L = 382.49'$
 $T = 19.25'$
 $R = 30,000.00'$
 $SE = 02$

DIRECTION	DISTANCE
L1	S79°51'23"E 23.17'
L2	S32°56'08"E 68.34'
L3	S49°00'31"E 36.69'
L4	S61°41'39"E 59.27'
L5	N49°26'10"E 19.15'
L6	N19°59'14"E 31.53'
L7	S27°10'28"E 110.74'
L8	S29°48'32"E 29.09'
L9	S18°51'30"E 23.39'
L10	S47°07'06"W 13.70'
L11	S03°33'08"E 44.30'
L12	S02°56'34"W 57.76'
L13	S02°56'34"W 24.21'
L14	S31°11'47"W 89.06'

NOTE: UTILIZE SPECIAL STILLING BASIN WHERE APPLICABLE.

NOTES:
 1. SEE SHEET 5 FOR -L- PROFILE.
 2. SEE SHEETS S-1 THROUGH S-?? FOR STRUCTURE PLANS.

8/17/99
 13-DEC-2012 08:41
 R:\Environmental\Design\B4561_EC_psh.dgn
 richard.t...
 AT PENN24778