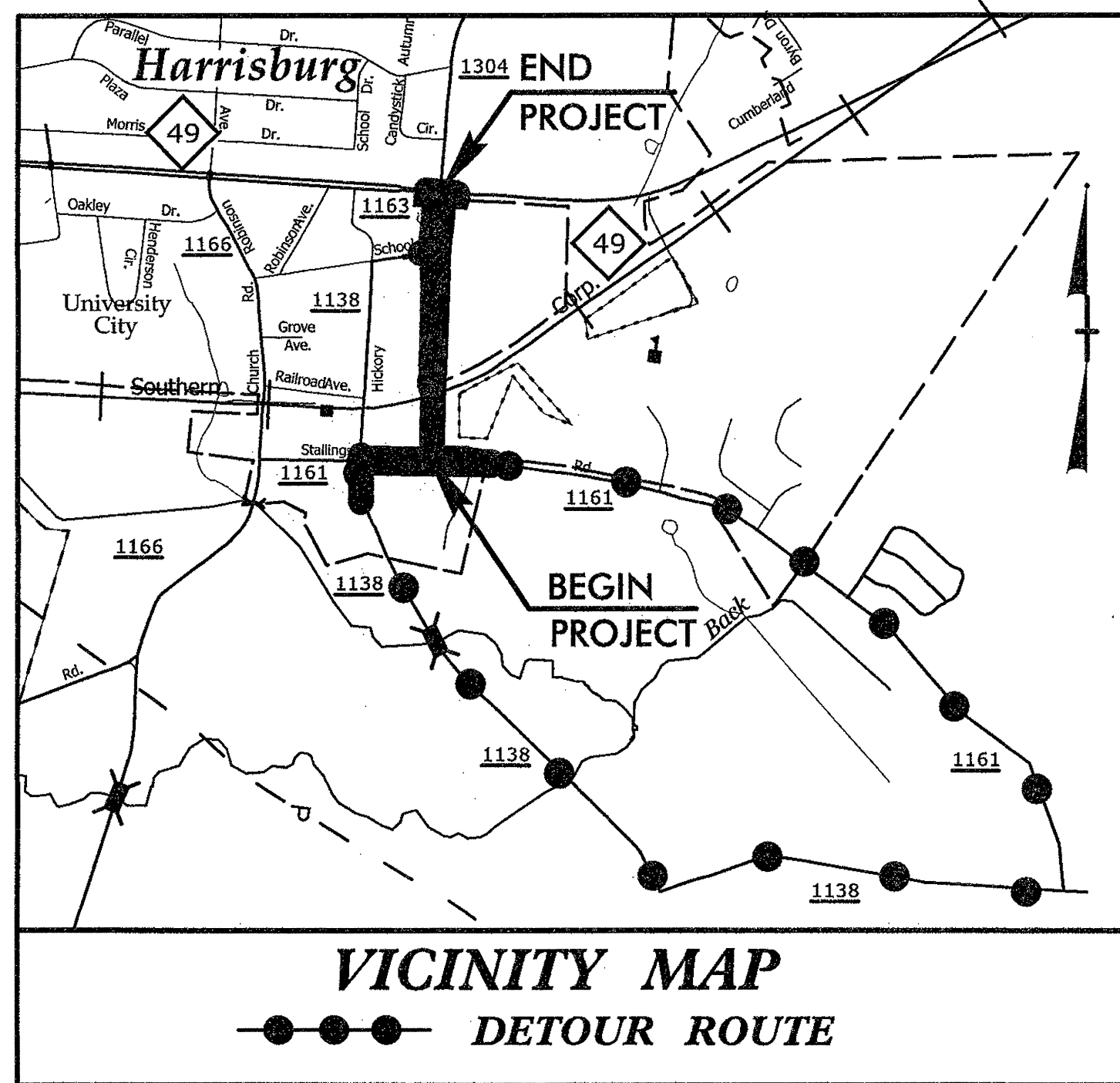


TIP PROJECT: P-5208D



**VICINITY MAP**  
●●●● DETOUR ROUTE

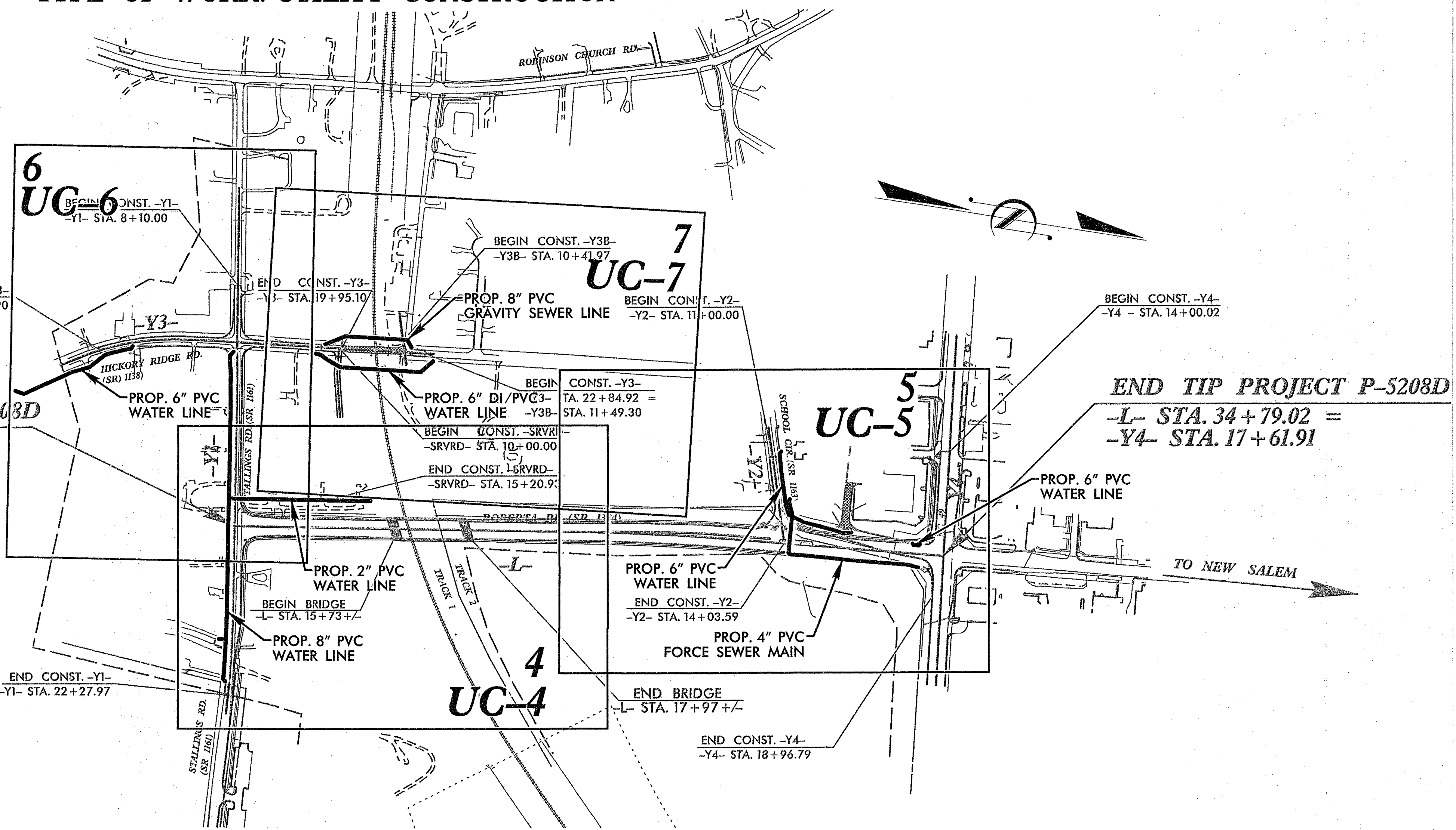
STATE OF NORTH CAROLINA  
DIVISION OF HIGHWAYS

**UTILITY CONSTRUCTION PLANS  
CABARRUS COUNTY**

LOCATION: ROBERTA RD. EXTENSION OVER NS/NCRR FROM  
STALLINGS RD. (SR 1161) TO NC49

TYPE OF WORK: UTILITY CONSTRUCTION

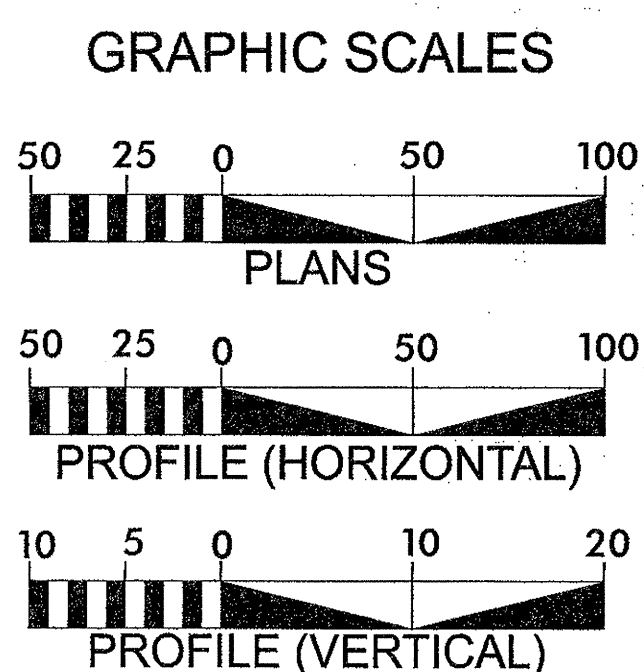
T.I.P. NO.	SHEET NO.
P-5208D	UC-1



BEGIN TIP PROJECT P-5208D  
-L- STA. 10+00.00 =  
-Y1- STA. 16+40.18

END TIP PROJECT P-5208D  
-L- STA. 34+79.02 =  
-Y4- STA. 17+61.91

CONTRACT:



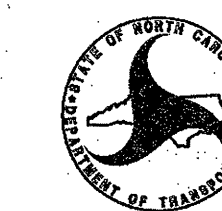
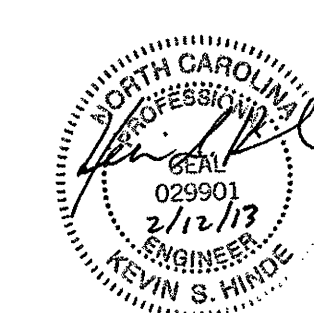
**INDEX OF SHEETS**

SHEET NO.	DESCRIPTION
UC-1	TITLE SHEET
UC-2	UTILITY SYMBOLOGY SHEET
UC-3	GENERAL NOTES SHEET
UC-4 THRU UC-7	UTILITY CONSTRUCTION SHEETS
UC-8 THRU UC-9	PROFILE SHEETS

**WATER AND SEWER OWNERS ON PROJECT**

- (1) WATER - TOWN OF HARRISBURG
- (2) SEWER - TOWN OF HARRISBURG

SEAL



NC DEPARTMENT OF  
TRANSPORTATION  
**RAIL DIVISION**

ENGINEERING AND SAFETY BRANCH  
CAPITAL YARD  
154 MAIL SERVICE CENTER  
RALEIGH, NC 27699-1544



STATE OF NORTH CAROLINA  
DIVISION OF HIGHWAYS



PROJECT REFERENCE NO. P-5208D	SHEET NO. UC-2
DESIGNED BY: KSH	
DRAWN BY: CLS	
CHECKED BY: KSH	
APPROVED BY:	
REVISED:	
NORTH CAROLINA DEPARTMENT OF TRANSPORTATION UTILITIES ENGINEERING SEC. PHONE: (919) 707-6690 FAX: (919) 250-4151	
UTILITY CONSTRUCTION PLANS ONLY	

**UTILITIES PLAN SHEET SYMBOLS**

**PROPOSED WATER SYMBOLS**

Water Line (Sized as Shown)	-----12" WL-----
11¼ Degree Bend	-----+-----
22½ Degree Bend	-----+-----
45 Degree Bend	-----+X-----
90 Degree Bend	-----+-----
Plug	-----+-----
Tee	-----+-----
Cross	-----+-----
Reducer	-----▶-----
Gate Valve	-----GV-----
Butterfly Valve	-----BV-----
Tapping Valve	-----TV-----
Line Stop	-----LS-----
Line Stop with Bypass	-----LS/BP-----
Blow Off	-----BO-----
Fire Hydrant	-----FH-----
Relocate Fire Hydrant	-----REH-----
Remove Fire Hydrant	-----REM FH-----
Water Meter	-----PMM-----
Relocate Water Meter	-----RWM-----
Remove Water Meter	-----REM WM-----
Water Pump Station	-----PST(W)-----
RPZ Backflow Preventer	-----RPZ-----
DCV Backflow Preventer	-----DBP-----
Relocate RPZ Backflow Preventer	-----RRPZ-----
Relocate DCV Backflow Preventer	-----RDBP-----

**PROPOSED SEWER SYMBOLS**

Gravity Sewer Line (Sized as Shown)	-----12" SS-----
Force Main Sewer Line (Sized as Shown)	-----12" FSS-----
Manhole (Sized per Note)	-----●-----
Sewer Pump Station	-----PST(SS)-----

**PROPOSED MISCELLANEOUS UTILITIES SYMBOLS**

Power Pole	-----○-----
Telephone Pole	-----○-----
Joint Use Pole	-----○-----
Telephone Pedestal	-----TEL PED-----
Utility Line by Others (Type as Shown)	-----PROP O/H POW LINES-----
Trenchless Installation	-----12" TL INSTALL-----
Encasement by Open Cut	-----24" ENCAS BY OC-----
Encasement	-----24" ENCASMENT-----

Thrust Block	-----I-----
Air Release Valve	-----AR-----
Utility Vault	-----UV-----
Concrete Pier	-----CP-----
Steel Pier	-----SP-----
Plan Note	-----NOTE-----
Pay Item Note	-----PAY ITEM-----

**UTILITY CONSTRUCTION**



**EXISTING UTILITIES SYMBOLS**

Power Pole	-----●-----
Telephone Pole	-----●-----
Joint Use Pole	-----●-----
Utility Pole	-----●-----
Utility Pole with Base	-----□-----
H-Frame Pole	-----●-----
Power Transmission Line Tower	-----⊠-----
Water Manhole	-----⊙-----
Power Manhole	-----⊙-----
Telephone Manhole	-----⊙-----
Sanitary Sewer Manhole	-----⊙-----
Hand Hole for Cable	-----⊠-----
Power Transformer	-----⊠-----
Telephone Pedestal	-----⊠-----
CATV Pedestal	-----⊠-----
Gas Valve	-----◇-----
Gas Meter	-----◇-----
Located Miscellaneous Utility Object	-----○-----
Abandoned According to Utility Records	-----AATUR-----
End of Information	-----E.O.I.-----

*Underground Power Line	-----P-----
*Underground Telephone Cable	-----T-----
*Underground Telephone Conduit	-----TC-----
*Underground Fiber Optics Telephone Cable	-----TF-----
*Underground TV Cable	-----TV-----
*Underground Fiber Optics TV Cable	-----TV FO-----
*Underground Gas Pipeline	-----G-----
Aboveground Gas Pipeline	-----A/G Gas-----
*Underground Water Line	-----W-----
Aboveground Water Line	-----A/G Water-----
*Underground Gravity Sanitary Sewer Line	-----SS-----
Aboveground Gravity Sanitary Sewer Line	-----A/G Sanitary Sewer-----
*Underground SS Forced Main Line	-----FSS-----
Underground Unknown Utility Line	-----?UL-----
SUE Test Hole	-----●-----
Water Meter	-----○-----
Water Valve	-----○-----
Fire Hydrant	-----◇-----
Sanitary Sewer Cleanout	-----⊙-----

\*For Existing Utilities  
Utility Line Drawn from Record (Type as Shown) -----  
Designated Utility Line (Type as Shown) -----

LOCATION: ROBERTA ROAD EXTENSION OVER NS/NCRR FROM STALLINGS ROAD (SR 1161) TO NC 49
TIP NO.: P-5208D COUNTY: CABARRUS
DESIGNED BY: CLS
CHECKED BY: KSH DATE: 2-12-2013

# UTILITY CONSTRUCTION



PROJECT REFERENCE NO. P-5208D	SHEET NO. UC-3
DESIGNED BY: KSH	
DRAWN BY: CLS	
CHECKED BY: KSH	
APPROVED BY:	
REVISED:	
NORTH CAROLINA DEPARTMENT OF TRANSPORTATION UTILITIES ENGINEERING SEC. PHONE: (919) 707-6690 FAX: (919) 250-4151	

## UTILITY CONSTRUCTION



### GENERAL NOTES:

1. THE PROPOSED UTILITY CONSTRUCTION SHALL MEET THE APPLICABLE REQUIREMENTS OF THE NC DEPARTMENT OF TRANSPORTATION'S "STANDARD SPECIFICATIONS FOR ROADS AND STRUCTURES" DATED JANUARY 2012.
2. THE EXISTING WATER AND SEWER FACILITIES BELONG TO THE TOWN OF HARRISBURG.
3. ALL WATER LINES TO BE INSTALLED WITHIN COMPLIANCE OF THE RULES AND REGULATIONS OF THE NORTH CAROLINA DEPARTMENT OF ENVIRONMENTAL AND NATURAL RESOURCES, DIVISION OF ENVIRONMENTAL HEALTH. ALL SEWER LINES TO BE INSTALLED WITHIN COMPLIANCE OF THE RULES AND REGULATIONS OF THE NORTH CAROLINA DEPARTMENT OF ENVIRONMENT AND NATURAL RESOURCES, DIVISION OF WATER QUALITY. PERFORM ALL WORK IN ACCORDANCE WITH THE APPLICABLE PLUMBING CODES.
4. THE UTILITY OWNER OWNS THE EXISTING UTILITY FACILITIES AND WILL OWN THE NEW UTILITY FACILITIES AFTER ACCEPTANCE BY THE DEPARTMENT. THE DEPARTMENT OWNS THE CONSTRUCTION CONTRACT AND HAS ADMINISTRATIVE AUTHORITY. COMMUNICATIONS AND DECISIONS BETWEEN THE CONTRACTOR AND UTILITY OWNER ARE NOT BINDING UPON THE DEPARTMENT OR THIS CONTRACT UNLESS AUTHORIZED BY THE ENGINEER. AGREEMENTS BETWEEN THE UTILITY OWNER AND CONTRACTOR FOR THE WORK THAT IS NOT PART OF THIS CONTRACT OR IS SECONDARY TO THIS CONTRACT ARE ALLOWED, BUT ARE NOT BINDING UPON THE DEPARTMENT.
5. PROVIDE ACCESS FOR THE DEPARTMENT PERSONNEL AND THE OWNER'S REPRESENTATIVES TO ALL PHASES OF CONSTRUCTION. NOTIFY DEPARTMENT PERSONNEL AND THE UTILITY OWNER TWO WEEKS PRIOR TO COMMENCEMENT OF ANY WORK AND ONE WEEK PRIOR TO SERVICE INTERRUPTION. KEEP UTILITY OWNERS' REPRESENTATIVES INFORMED OF WORK PROGRESS AND PROVIDE OPPORTUNITY FOR INSPECTION OF CONSTRUCTION AND TESTING.

6. THE PLANS DEPICT THE BEST AVAILABLE INFORMATION FOR THE LOCATION, SIZE, AND TYPE OF MATERIAL FOR ALL EXISTING UTILITIES. MAKE INVESTIGATIONS FOR DETERMINING THE EXACT LOCATION, SIZE, AND TYPE MATERIAL OF THE EXISTING FACILITIES AS NECESSARY FOR THE CONSTRUCTION OF THE PROPOSED UTILITIES AND FOR AVOIDING DAMAGE TO EXISTING FACILITIES. REPAIR ANY DAMAGE INCURRED TO EXISTING FACILITIES TO THE ORIGINAL OR BETTER CONDITION AT NO ADDITIONAL COST TO THE DEPARTMENT.
7. MAKE FINAL CONNECTIONS OF THE NEW WORK TO THE EXISTING SYSTEM WHERE INDICATED ON THE PLANS, AS REQUIRED TO FIT THE ACTUAL CONDITIONS, OR AS DIRECTED.
8. MAKE CONNECTIONS BETWEEN EXISTING AND PROPOSED UTILITIES AT TIMES MOST CONVENIENT TO THE PUBLIC, WITHOUT ENDANGERING THE UTILITY SERVICE, AND IN ACCORDANCE WITH THE UTILITY OWNER'S REQUIREMENTS. MAKE CONNECTIONS ON WEEKENDS, AT NIGHT, AND ON HOLIDAYS IF NECESSARY.
9. ALL UTILITY MATERIALS SHALL BE APPROVED PRIOR TO DELIVERY TO THE PROJECT. SEE 1500-7, " SUBMITTALS AND RECORDS" IN SECTION 1500 OF THE STANDARD SPECIFICATIONS.

### PROJECT SPECIFIC NOTES:

1. THE PROPOSED UTILITY CONSTRUCTION SHALL MEET THE APPLICABLE REQUIREMENTS OF THE WATER & SEWER AUTHORITY OF CABARRUS COUNTY "STANDARD SPECIFICATIONS" DATED AUGUST 2006.
2. FOR THE FIRE HYDRANTS TO BE REMOVED, THE CONTRACTOR SHALL CONTACT THE TOWN OF HARRISBURG PUBLIC WORKS TO DETERMINE A SUITABLE LOCATION TO STOCKPILE THE FIRE HYDRANT AND ASSOCIATED ITEMS.
3. ALL WORK WITHIN NCRR R/W TO BE PERFORMED IN ACCORDANCE WITH NORTH CAROLINA RAILROAD SPECIFICATIONS NCR 101, 102 AND 103.

### LIST OF STANDARD DRAWINGS

- 1515.01 WATER METER
- 1515.02 FIRE HYDRANT
- 1520.01 SEWER CLEAN OUT

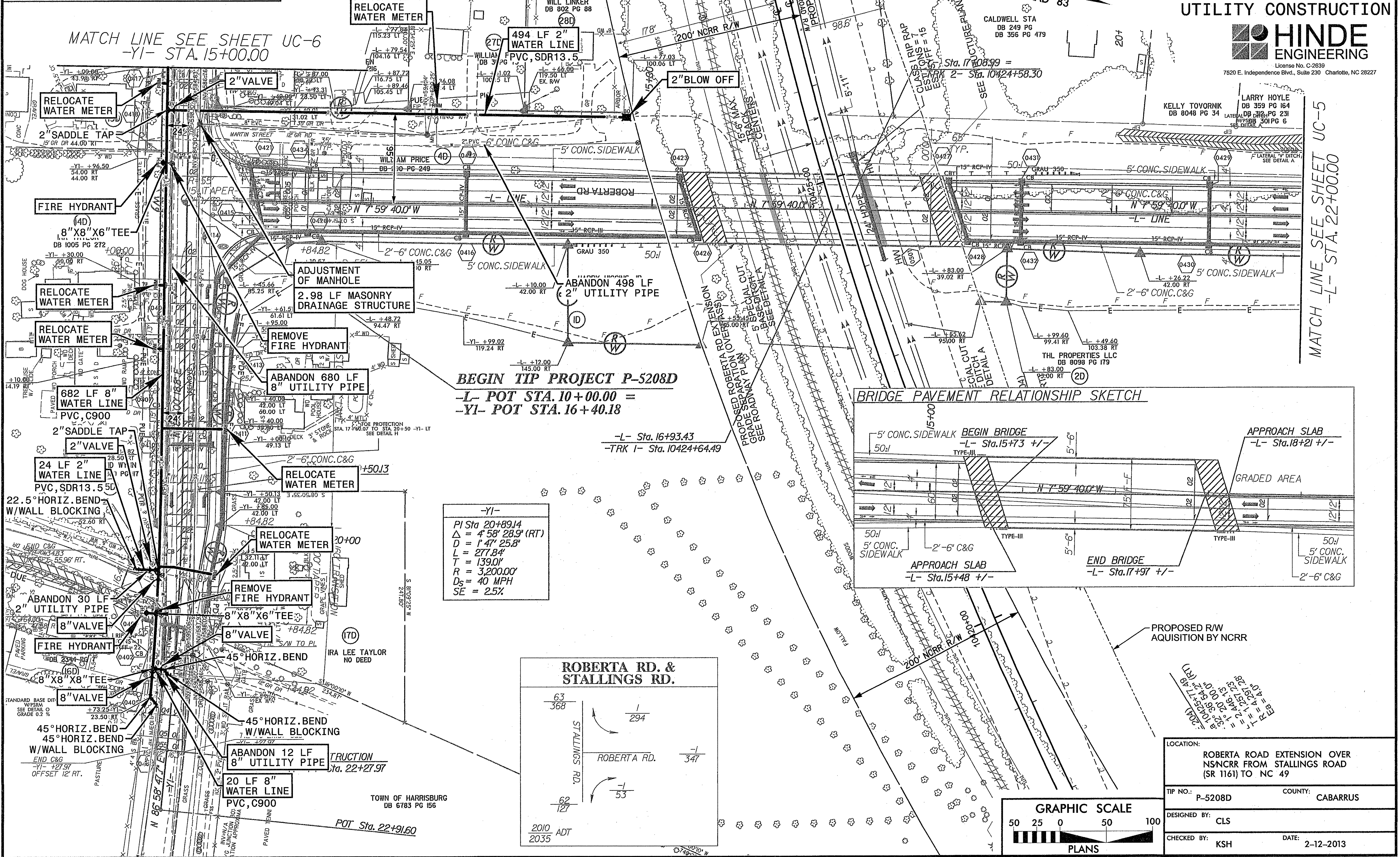
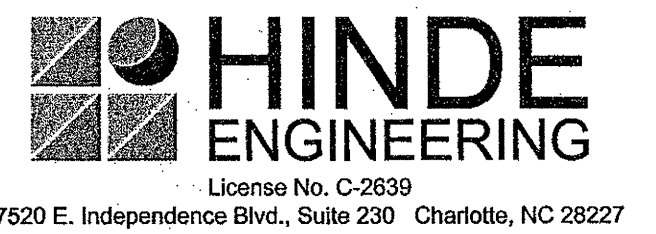
LOCATION: ROBERTA ROAD EXTENSION OVER NS/NCRR FROM STALLINGS ROAD (SR 1161) TO NC 49	
TIP NO.: P-5208D	COUNTY: CABARRUS
DESIGNED BY: CLS	
CHECKED BY: KSH	DATE: 2-12-2013

REVISIONS	

PROJECT REFERENCE NO. P-5208D	SHEET NO. UC-4
DESIGNED BY: KSH	
DRAWN BY: CLS	
CHECKED BY: KSH	
APPROVED BY:	
REVISED:	
NORTH CAROLINA DEPARTMENT OF TRANSPORTATION UTILITIES ENGINEERING SEC. PHONE: (919) 707-6690 FAX: (919) 250-4151	
UTILITY CONSTRUCTION PLANS ONLY	



UTILITY CONSTRUCTION

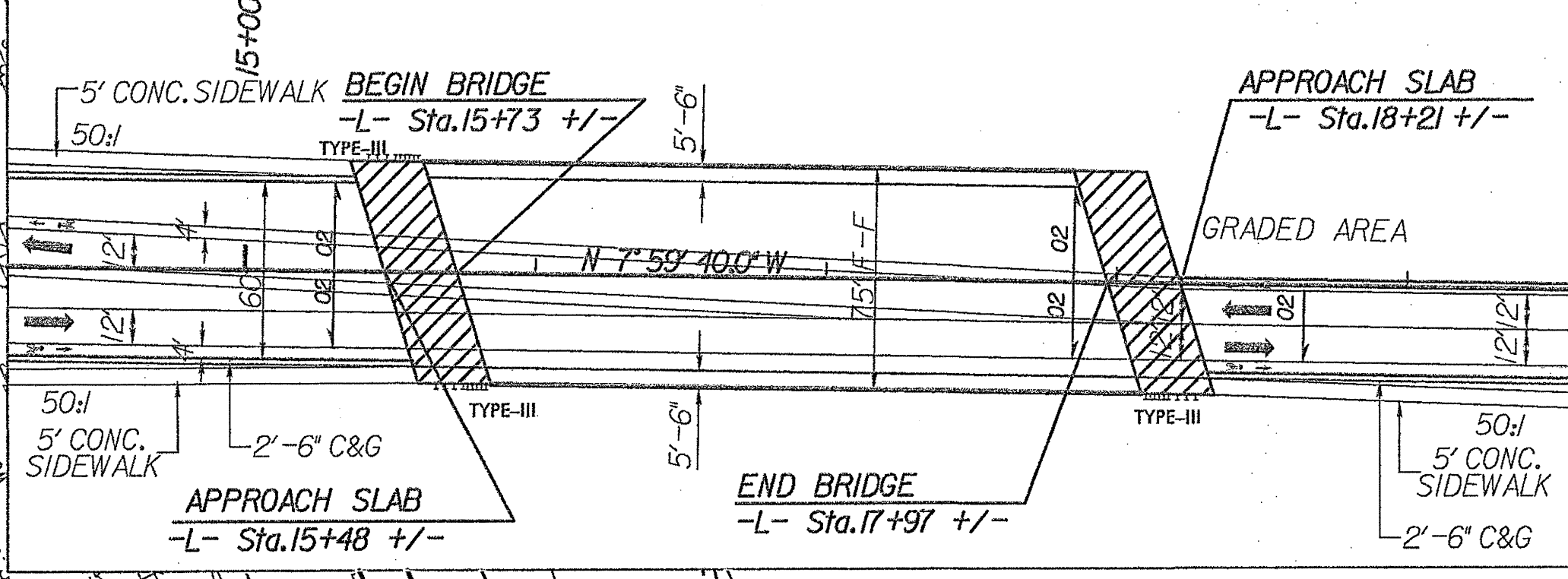


MATCH LINE SEE SHEET UC-6  
-YI- STA. 15+00.00

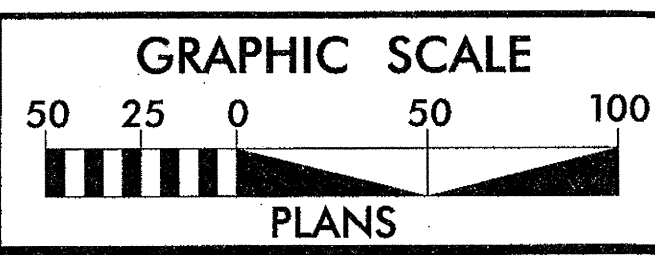
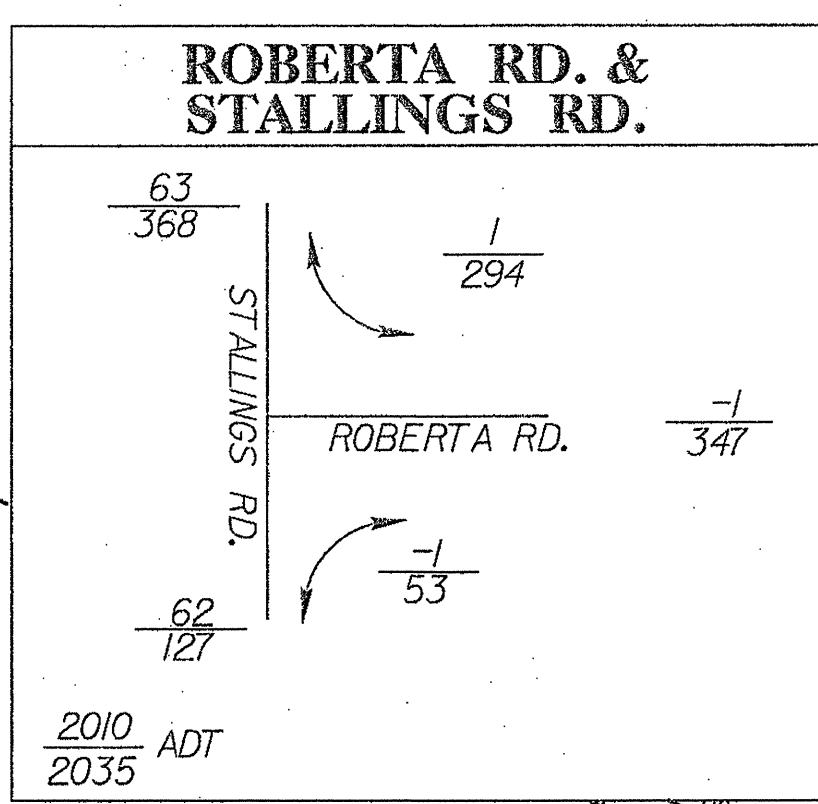
MATCH LINE SEE SHEET UC-5  
-L- STA. 22+00.00

**BEGIN TIP PROJECT P-5208D**  
 -L- POT STA. 10+00.00 =  
 -YI- POT STA. 16+40.18

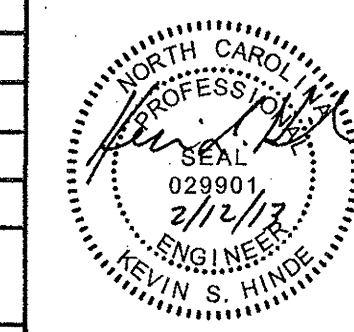
BRIDGE PAVEMENT RELATIONSHIP SKETCH



-YI-  
 PI Sta 20+89.14  
 $\Delta = 4' 58'' 28.9'' (RT)$   
 $D = 1' 47'' 25.8''$   
 $L = 277.84'$   
 $T = 139.0'$   
 $R = 3,200.00'$   
 $D_s = 40 \text{ MPH}$   
 $SE = 2.5\%$



LOCATION: ROBERTA ROAD EXTENSION OVER NSNCR FROM STALLINGS ROAD (SR 1161) TO NC 49
TIP NO.: P-5208D      COUNTY: CABARRUS
DESIGNED BY: CLS
CHECKED BY: KSH      DATE: 2-12-2013



# UTILITY CONSTRUCTION

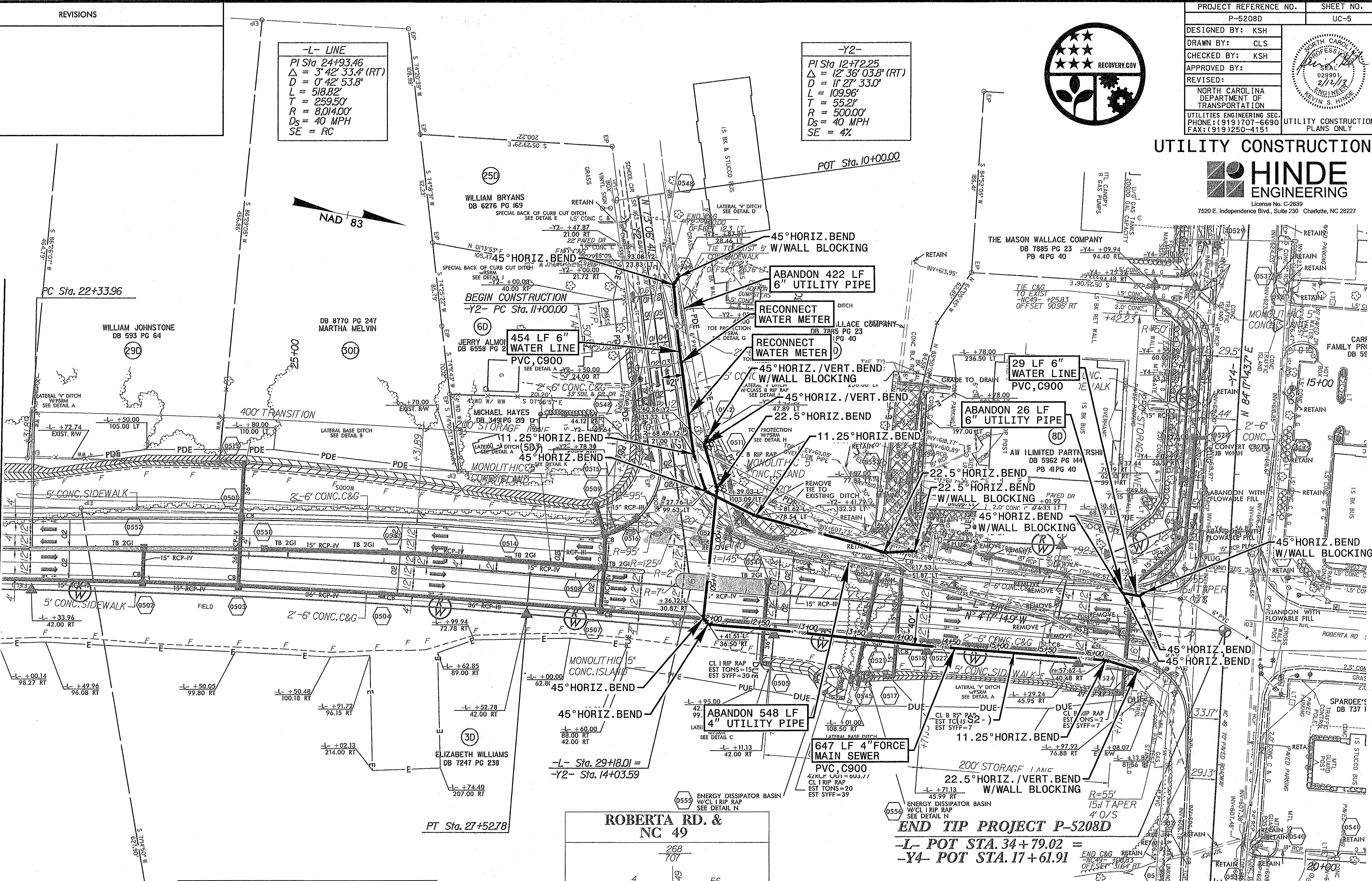


License No. C-2639  
7520 E. Independence Blvd., Suite 230 Charlotte, NC 28227

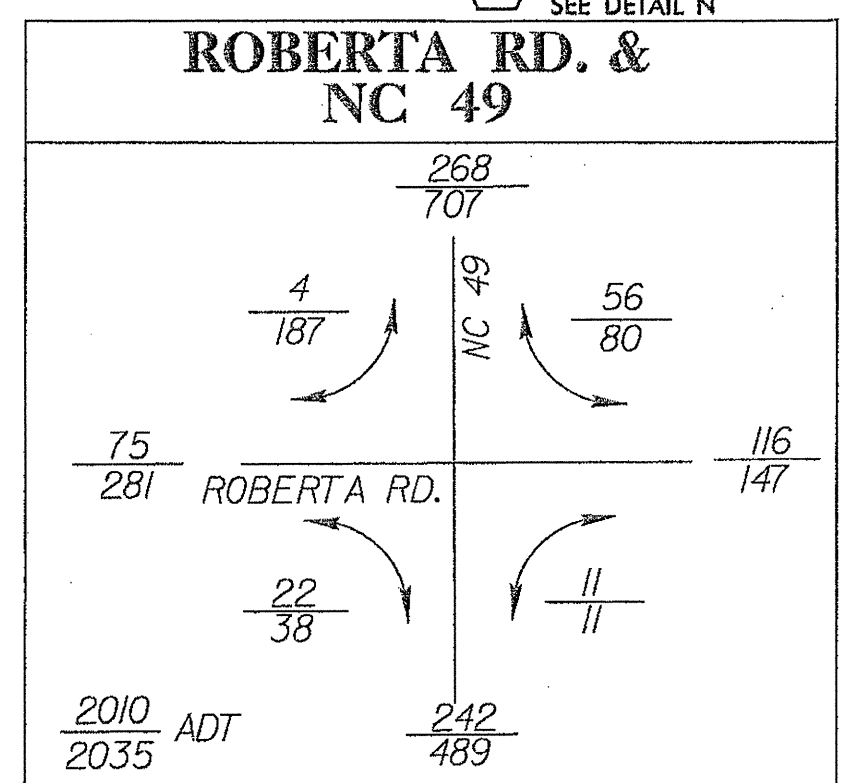
**-L- LINE**  
PI Sta. 24+93.46  
 $\Delta = 3^{\circ} 42' 33.4" (RT)$   
 $D = 0^{\circ} 42' 53.8"$   
 $L = 518.82'$   
 $T = 259.50'$   
 $R = 8,014.00'$   
 $D_s = 40 \text{ MPH}$   
 $SE = RC$

**-Y2-**  
PI Sta. 12+72.25  
 $\Delta = 12^{\circ} 36' 03.8" (RT)$   
 $D = 1^{\circ} 27' 33.0"$   
 $L = 109.96'$   
 $T = 55.21'$   
 $R = 500.00'$   
 $D_s = 40 \text{ MPH}$   
 $SE = 4\%$

MATCH LINE SEE SHEET UC-4  
-L- STA. 22+00.00

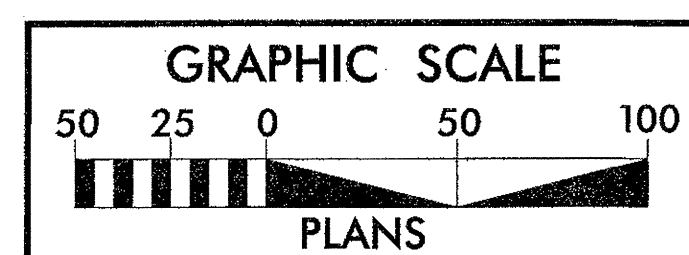


NOTE: CONCRETE TRANSITION SECTION FOR D.I. AT LOCATIONS WHERE G.I.'S ARE PLACED IN MONOLITHIC ISLAND.



**END TIP PROJECT P-5208D**  
-L- POT STA. 34+79.02 =  
-Y4- POT STA. 17+61.91

PAVEMENT REMOVAL



LOCATION:	ROBERTA ROAD EXTENSION OVER NS/NCR FROM STALLINGS ROAD (SR 1161) TO NC 49
TIP NO.:	P-5208D
COUNTY:	CABARRUS
DESIGNED BY:	CLS
CHECKED BY:	KSH
DATE:	2-12-2013

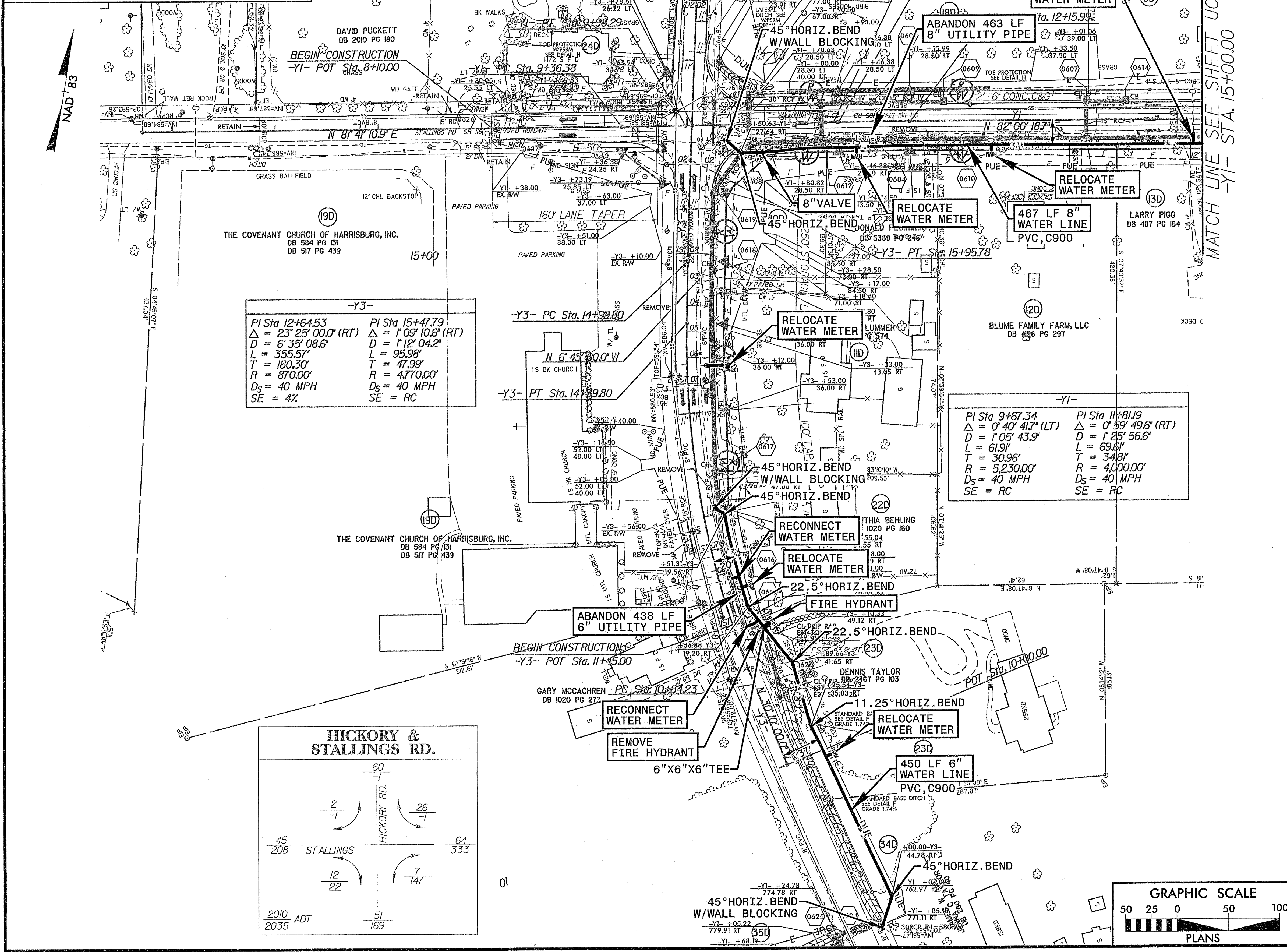
REVISIONS	

MATCH LINE SEE SHEET UC-7  
-Y3- STA. 18+50.00

PROJECT REFERENCE NO. P-5208D	SHEET NO. UC-6
DESIGNED BY: KSH	
DRAWN BY: CLS	
CHECKED BY: KSH	
APPROVED BY: KSH	
REVISED:	NORTH CAROLINA DEPARTMENT OF TRANSPORTATION UTILITIES ENGINEERING SEC. PHONE: (919) 707-6690 FAX: (919) 250-4151
UTILITY CONSTRUCTION PLANS ONLY	

UTILITY CONSTRUCTION

**HINDE ENGINEERING**  
License No. C-2639  
7520 E. Independence Blvd., Suite 230 Charlotte, NC 28227

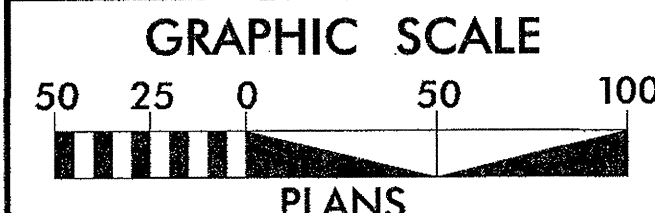
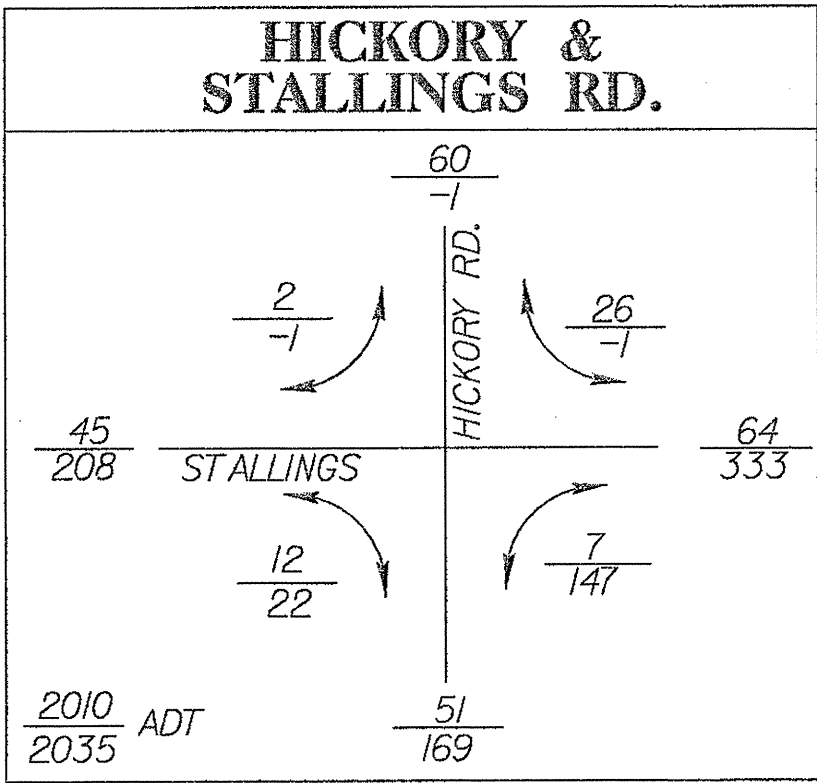


-Y3-

PI Sta 12+64.53	PI Sta 15+47.79
$\Delta = 23^{\circ} 25' 00.0''$ (RT)	$\Delta = 1^{\circ} 09' 10.6''$ (RT)
D = 6' 35' 08.6"	D = 1' 12' 04.2"
L = 355.57'	L = 95.98'
T = 180.30'	T = 47.99'
R = 870.00'	R = 4770.00'
D <sub>s</sub> = 40 MPH	D <sub>s</sub> = 40 MPH
SE = 4%	SE = RC

-Y1-

PI Sta 9+67.34	PI Sta 11+81.19
$\Delta = 0^{\circ} 40' 41.7''$ (LT)	$\Delta = 0^{\circ} 59' 49.6''$ (RT)
D = 1' 05' 43.9"	D = 1' 25' 56.6"
L = 61.9'	L = 69.8'
T = 30.96'	T = 34.8'
R = 5,230.00'	R = 4,000.00'
D <sub>s</sub> = 40 MPH	D <sub>s</sub> = 40 MPH
SE = RC	SE = RC



LOCATION: ROBERTA ROAD EXTENSION OVER NS/NCR FROM STALLINGS ROAD (SR 1161) TO NC 49	
TIP NO.: P-5208D	COUNTY: CABARRUS
DESIGNED BY: CLS	DATE: 2-12-2013
CHECKED BY: KSH	

REVISIONS

ALL WORK WITHIN NCRR R/W TO BE PERFORMED IN ACCORDANCE WITH NORTH CAROLINA RAILROAD SPECIFICATIONS NCR 101, 102 AND 103.

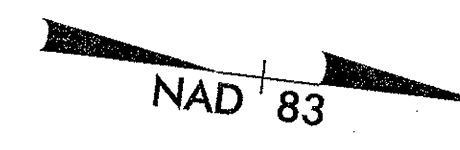
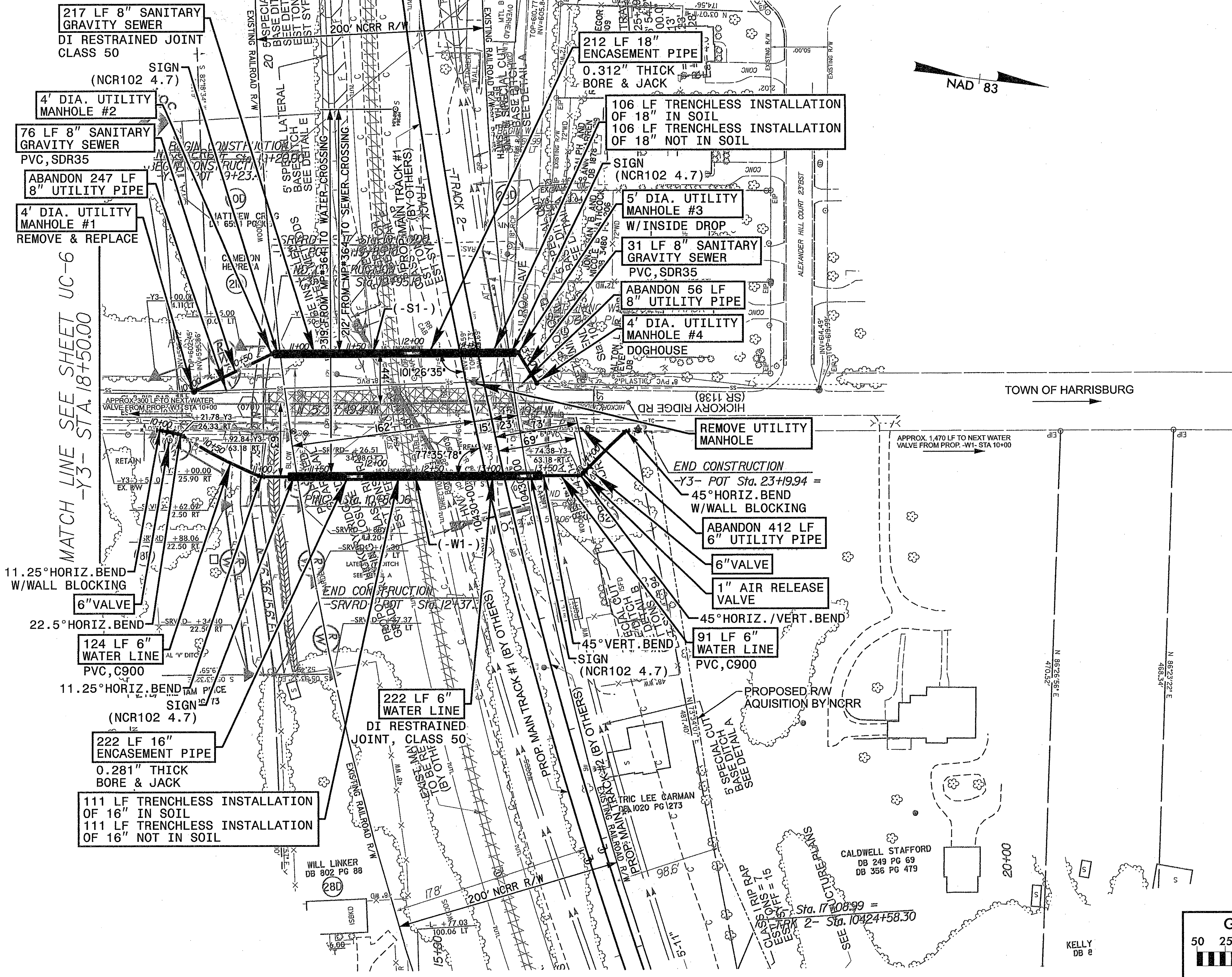
AAR/DOT# - 715-330H



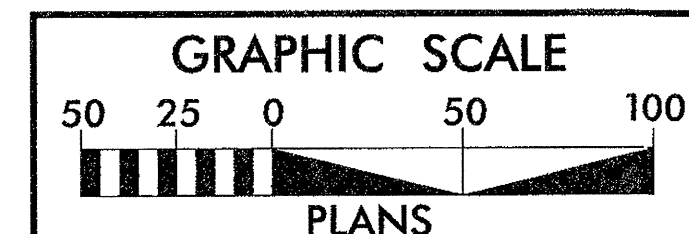
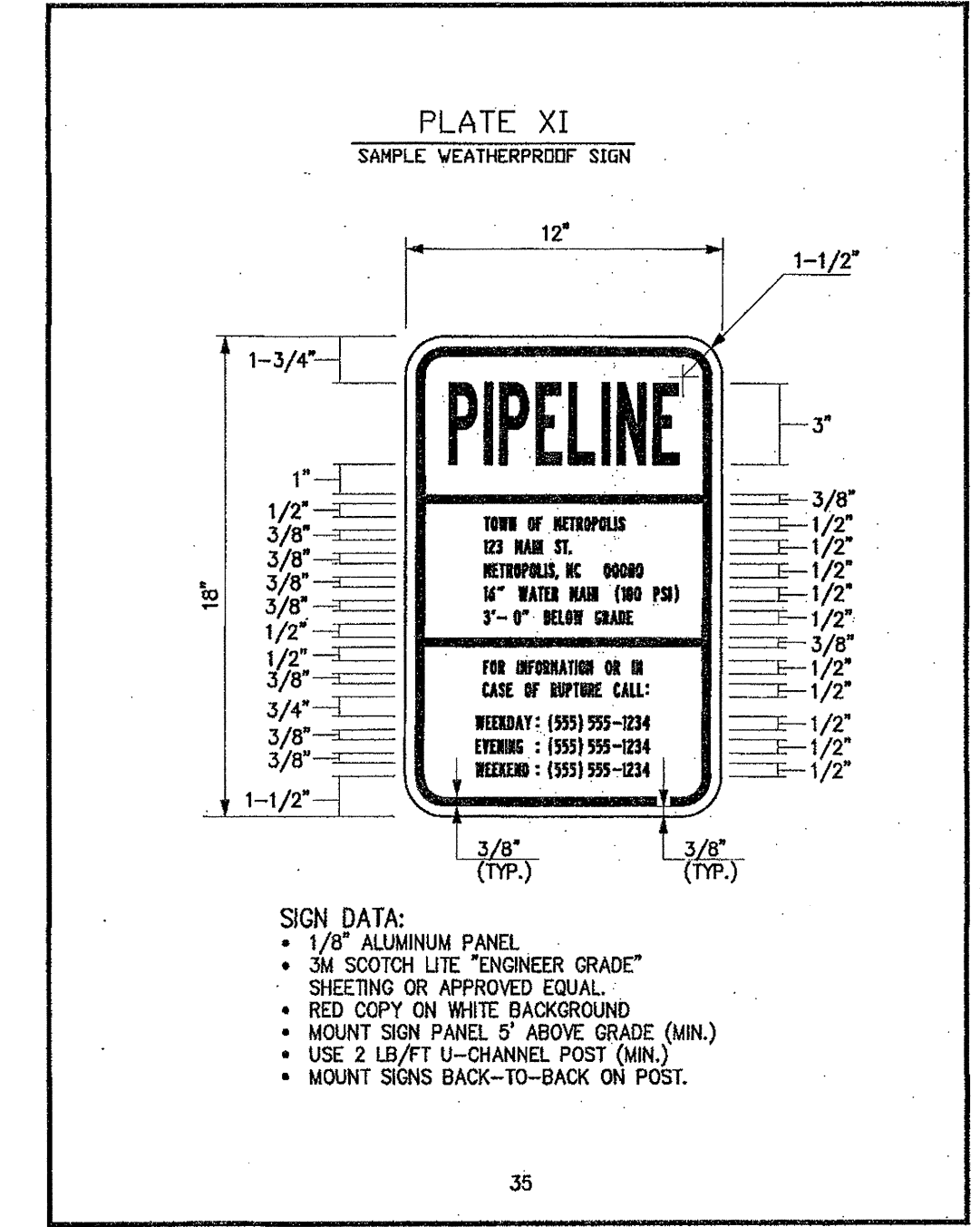
PROJECT REFERENCE NO. P-5208D	SHEET NO. UC-7
DESIGNED BY: KSH	
DRAWN BY: CLS	
CHECKED BY: KSH	
APPROVED BY:	
REVISED:	UTILITY CONSTRUCTION PLANS ONLY

UTILITY CONSTRUCTION

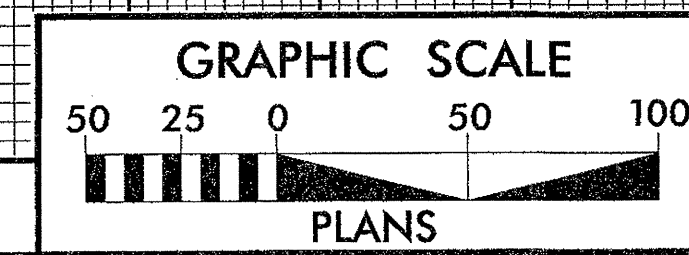
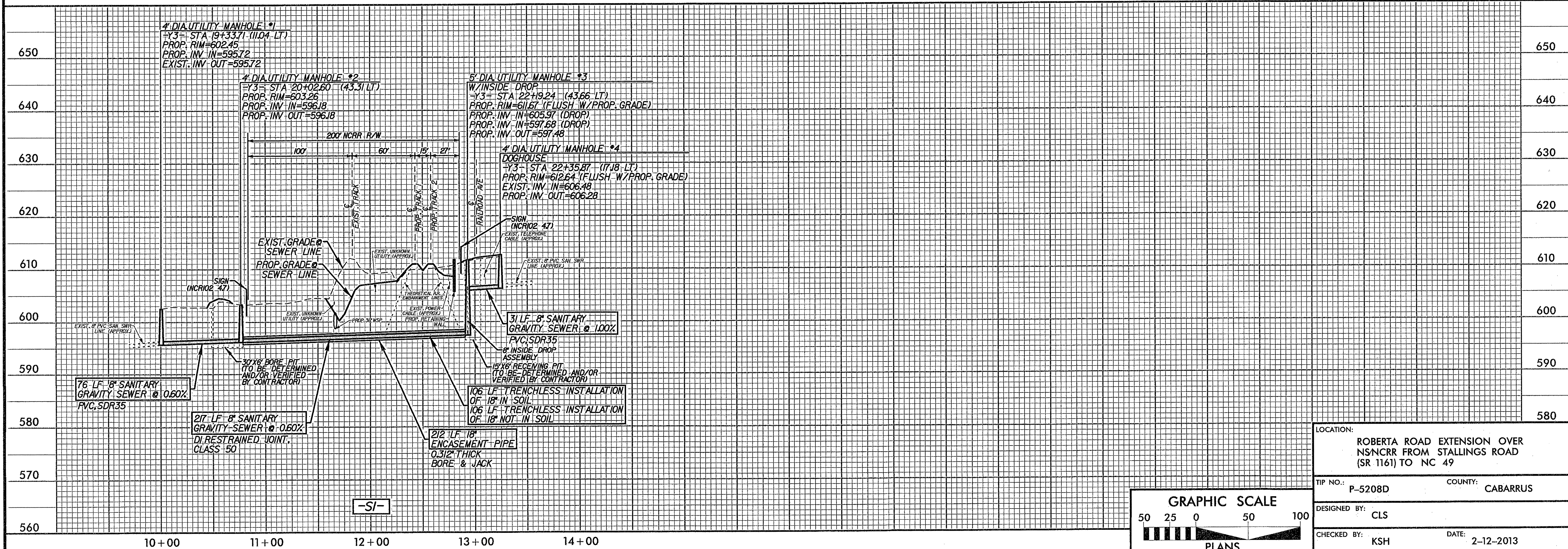
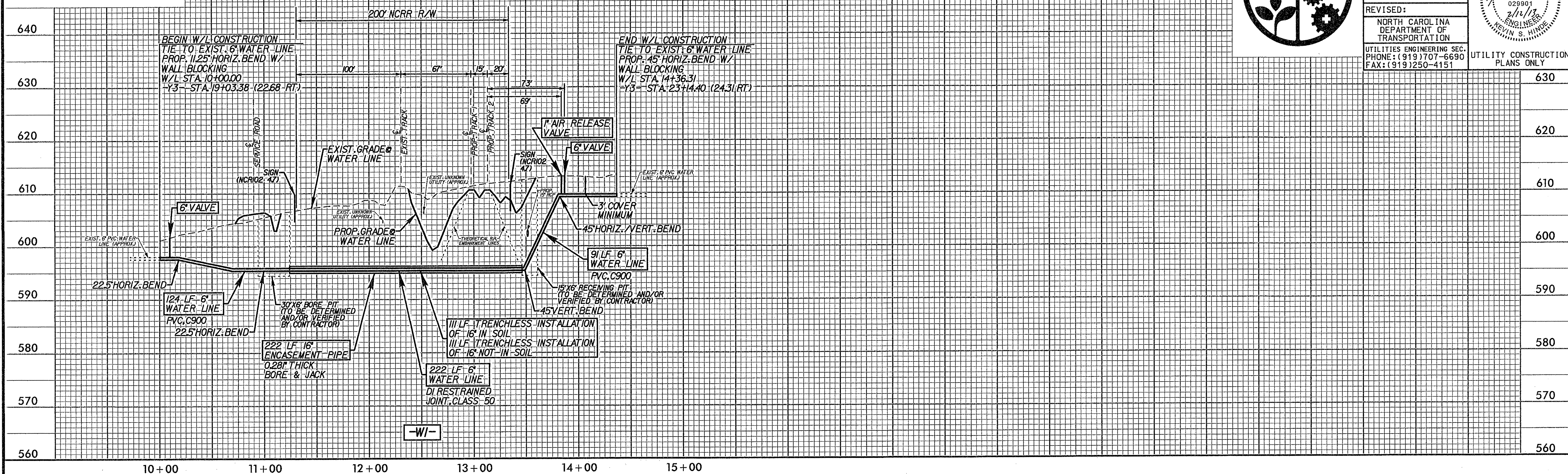
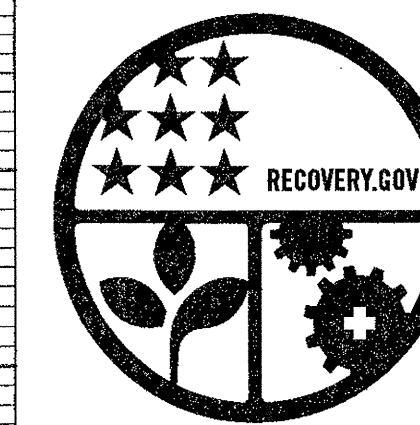
**HINDE ENGINEERING**  
 License No. C-2839  
 7520 E. Independence Blvd., Suite 230 Charlotte, NC 28227



NCRR STANDARD DETAIL



LOCATION: ROBERTA ROAD EXTENSION OVER NS/NCRR FROM STALLINGS ROAD (SR 1161) TO NC 49
TIP NO.: P-5208D COUNTY: CABARRUS
DESIGNED BY: CLS
CHECKED BY: KSH DATE: 2-12-2013



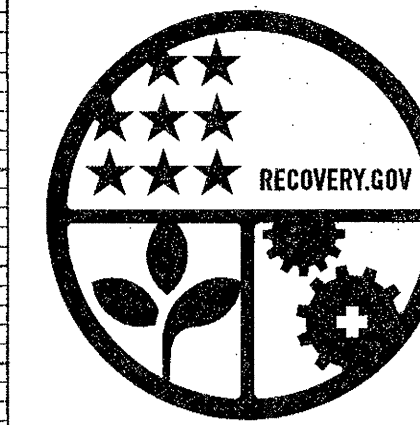
LOCATION: ROBERTA ROAD EXTENSION OVER NSNCR FROM STALLINGS ROAD (SR 1161) TO NC 49

TIP NO.: P-5208D COUNTY: CABARRUS

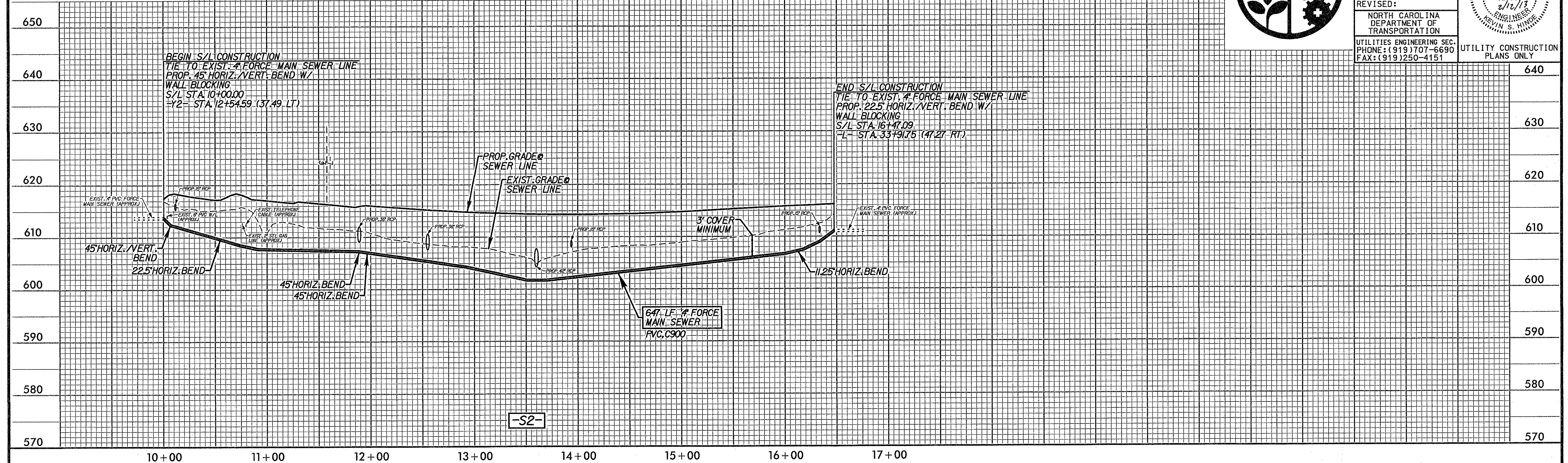
DESIGNED BY: CLS

CHECKED BY: KSH DATE: 2-12-2013



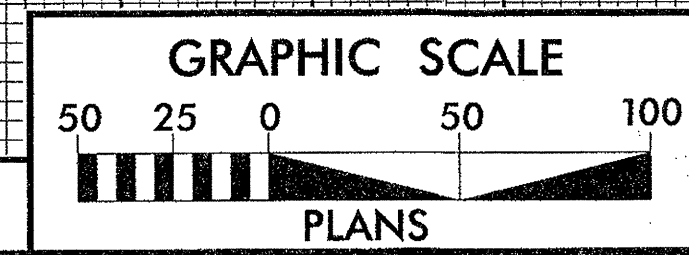


PROJECT REFERENCE NO. P-5208D	SHEET NO. UC-9
DESIGNED BY: CLS	
DRAWN BY: JNA	
CHECKED BY: KSH	
APPROVED BY:	
REVISED:	
NORTH CAROLINA DEPARTMENT OF TRANSPORTATION UTILITIES ENGINEERING SEC. PHONE: (919) 707-6690 FAX: (919) 250-4151	



-S2-

LOCATION: ROBERTA ROAD EXTENSION OVER NSNCR FROM STALLINGS ROAD (SR 1161) TO NC 49	
TIP NO.: P-5208D	COUNTY: CABARRUS
DESIGNED BY: CLS	
CHECKED BY: KSH	DATE: 2-12-2013



DCN  
0077DEL P10a4

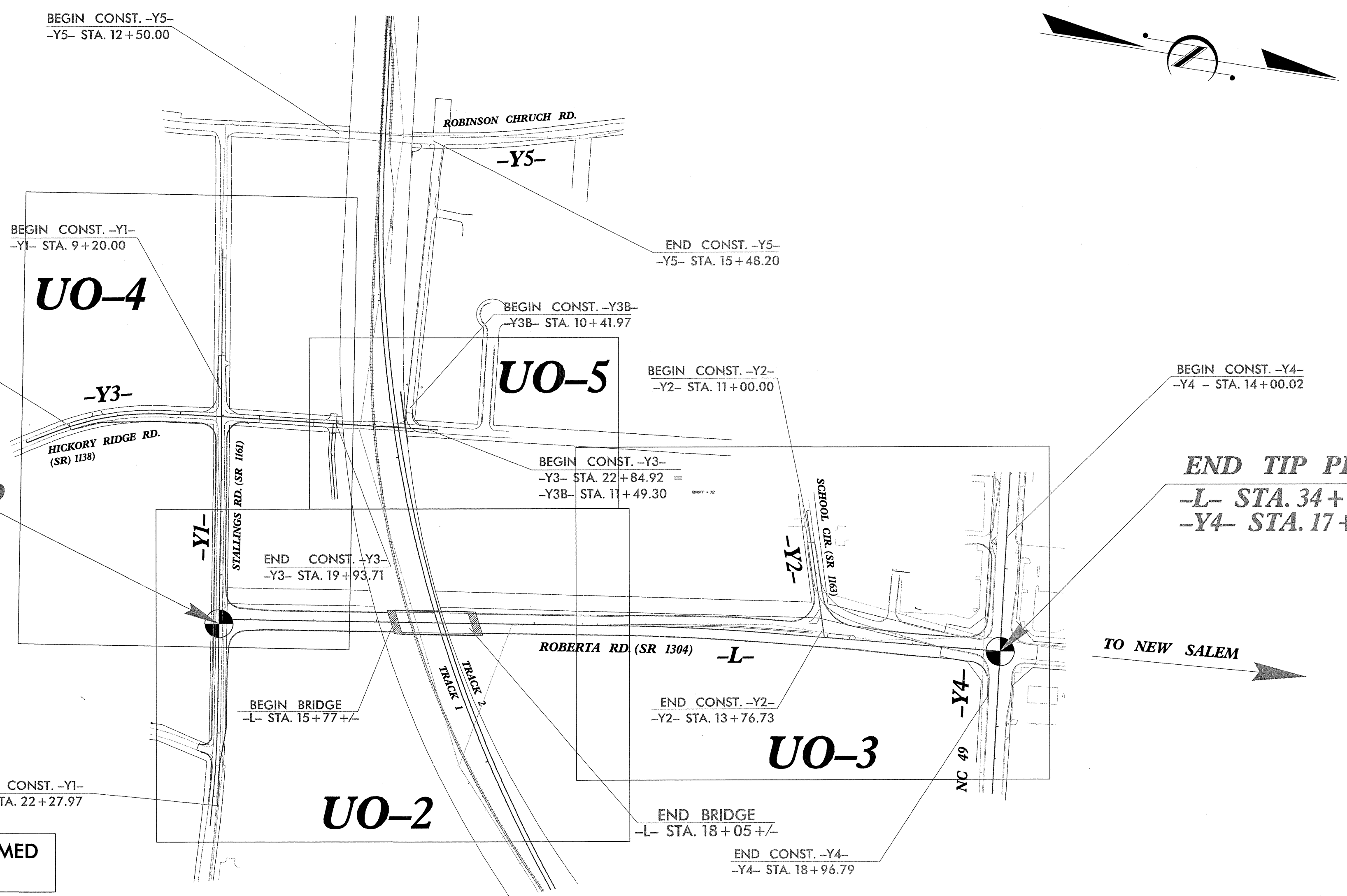
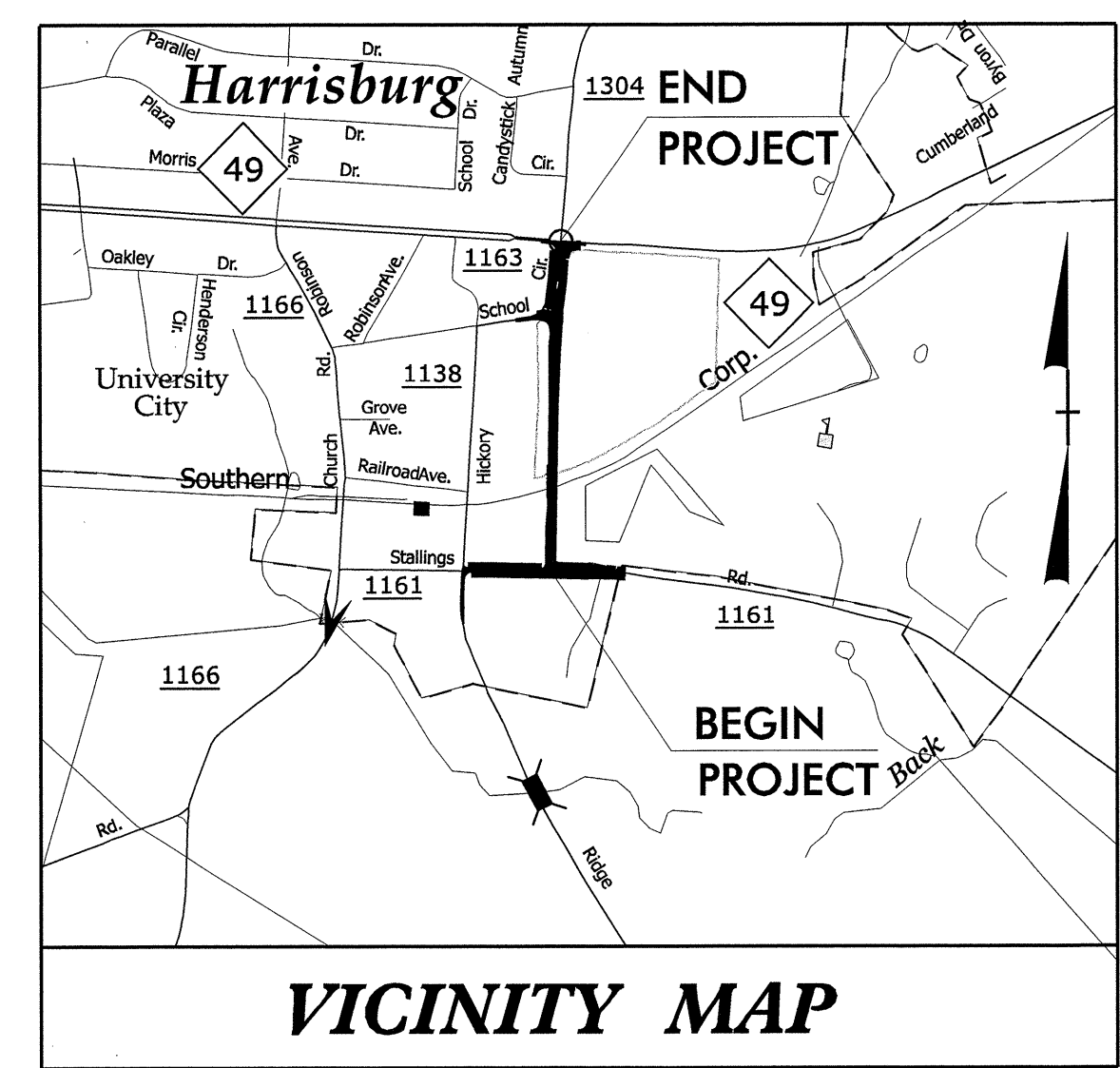
CONTRACT: C203146 TIP PROJECT: P-5208D

STATE OF NORTH CAROLINA  
NCDOT RAIL DIVISION

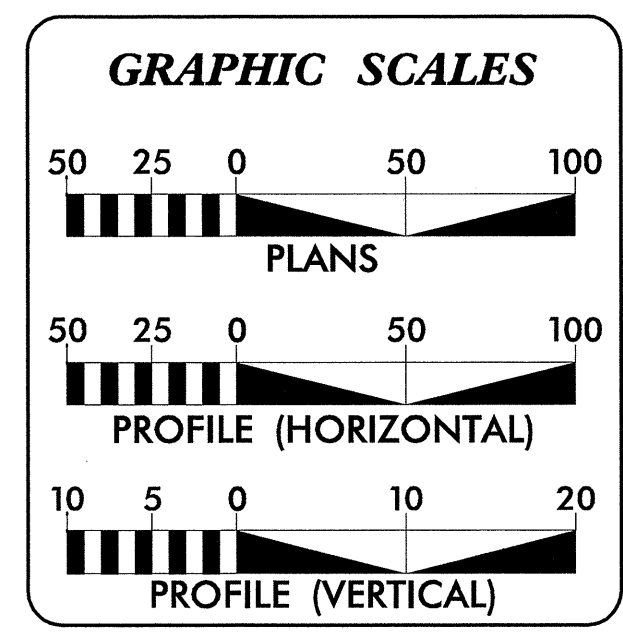
T.I.P. NO.	SHEET NO.
P-5208D	UO-1

**UTILITIES BY OTHERS PLAN  
CABARRUS COUNTY**

**ROBERTA RD. EXTENSION OVER NSNCRR FROM  
NC 49 TO STALLING RD. (SR 1161).  
GRADING, PAVING, DRAINAGE, STRUCTURES,  
SIGNALING, SIGNALS AND GUARDRAIL & PAVEMENT MARKINGS.**



CLEARING ON THIS PROJECT SHALL BE PERFORMED TO THE LIMITS ESTABLISHED BY METHOD



SHEET NO.	DESCRIPTION
UO-1	TITLE SHEET
UO-2 TO UO-5	UTILITIES BY OTHERS PLAN SHEETS

- UTILITY OWNERS ON PROJECT**
- (1) Duke Energy (Power Distribution)
  - (2) Windstream (Telecommunications)
  - (3) Time Warner Cable (Cable Television)
  - (4) PSNC (Distribution Gas)
  - (5) Town of Harrisburg (Water/Sewer)

PREPARED IN THE OFFICE OF:  
**DIVISION OF HIGHWAYS  
UTILITIES ENGINEERING  
SECTION**

1591 MAIL SERVICES CENTER  
RALEIGH, NC 27699-1591  
PHONE (919) 250-4128  
FAX (919) 250-4119

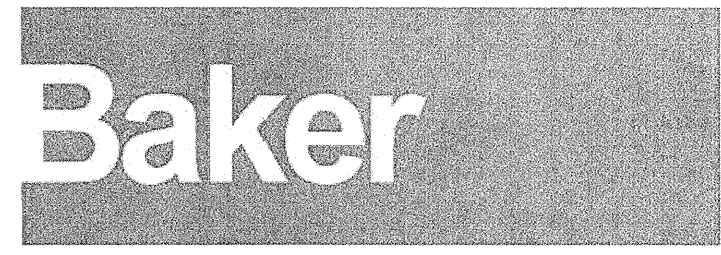
\_\_\_\_\_  
UTILITIES SECTION ENGINEER

\_\_\_\_\_  
UTILITIES SQUAD LEADER PROJECT ENGINEER

\_\_\_\_\_  
UTILITIES COORDINATION CONSULTANT

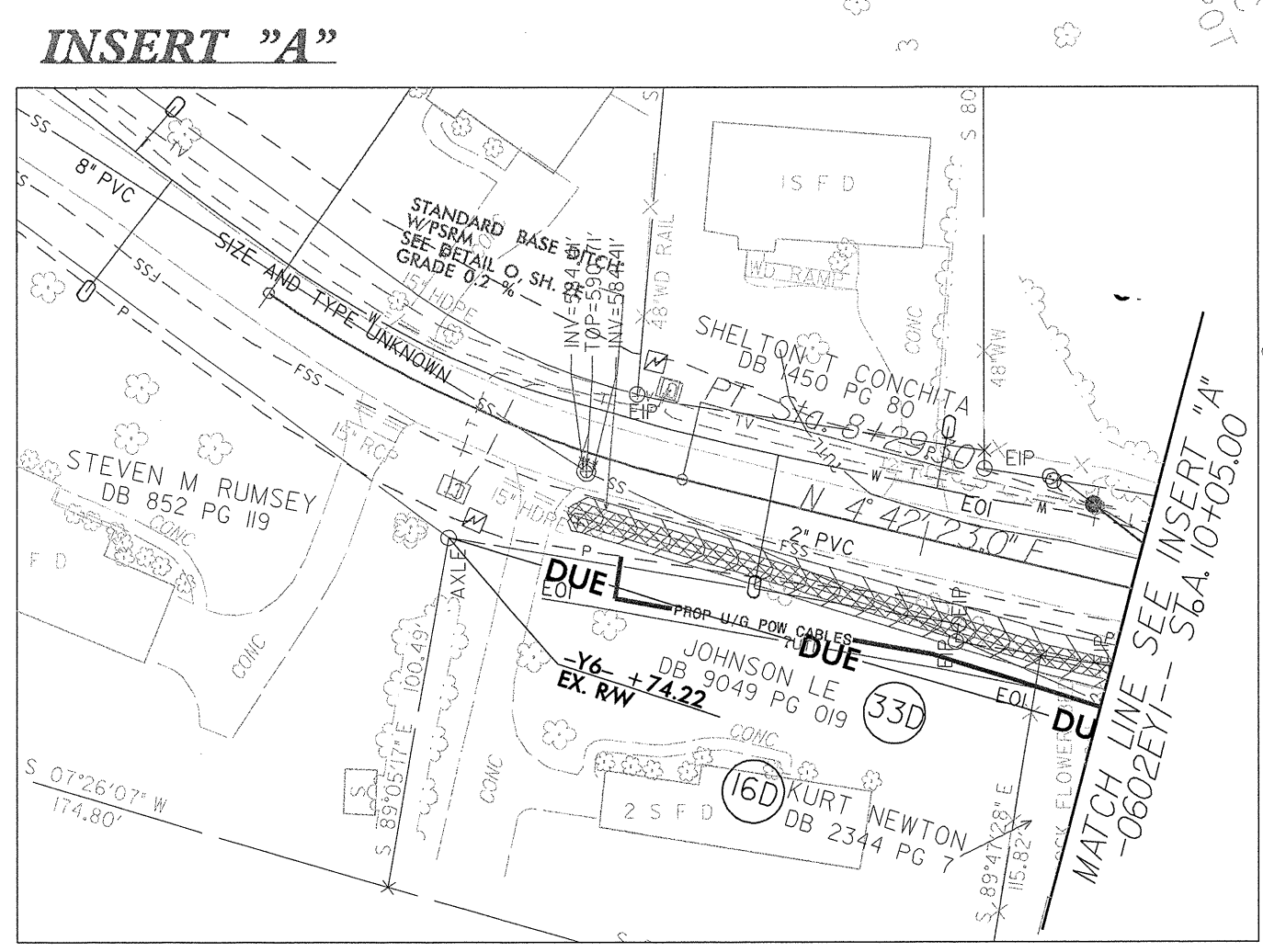
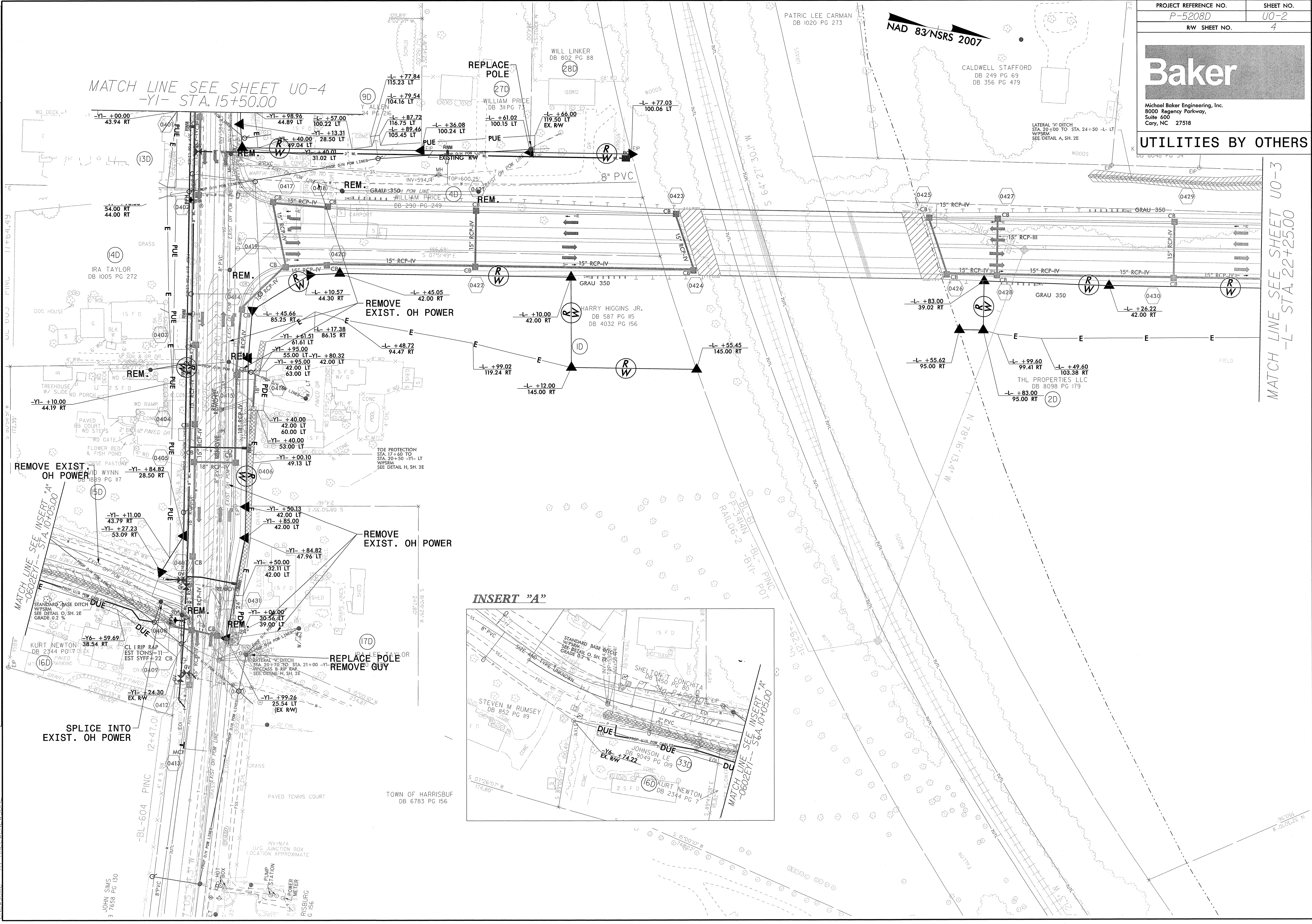
DCN  
0077DEL P10c4

PROJECT REFERENCE NO.	SHEET NO.
P-5208D	U0-2
RW SHEET NO.	4



Michael Baker Engineering, Inc.  
8000 Regency Parkway,  
Suite 600  
Cary, NC 27518

### UTILITIES BY OTHERS



REVISIONS

01-MAR-2013 14:43  
Y:\Projects\NC001\_P-5208D\DISCIPLINE\Utilities\5208D-Coord-U0-02.dgn  
Newsome AT RAJ E:\NEWSOME

JOHN SIMS  
3 7658 PG 130

MATCH LINE SEE SHEET U0-4  
-YI- STA. 15+50.00

MATCH LINE SEE SHEET U0-3  
-L- STA. 22+25.00

MATCH LINE SEE INSERT "A"  
-0602EVI-- STA. 10+05.00

MATCH LINE SEE INSERT "A"  
-0602EVI-- STA. 10+05.00

**UTILITIES BY OTHERS**

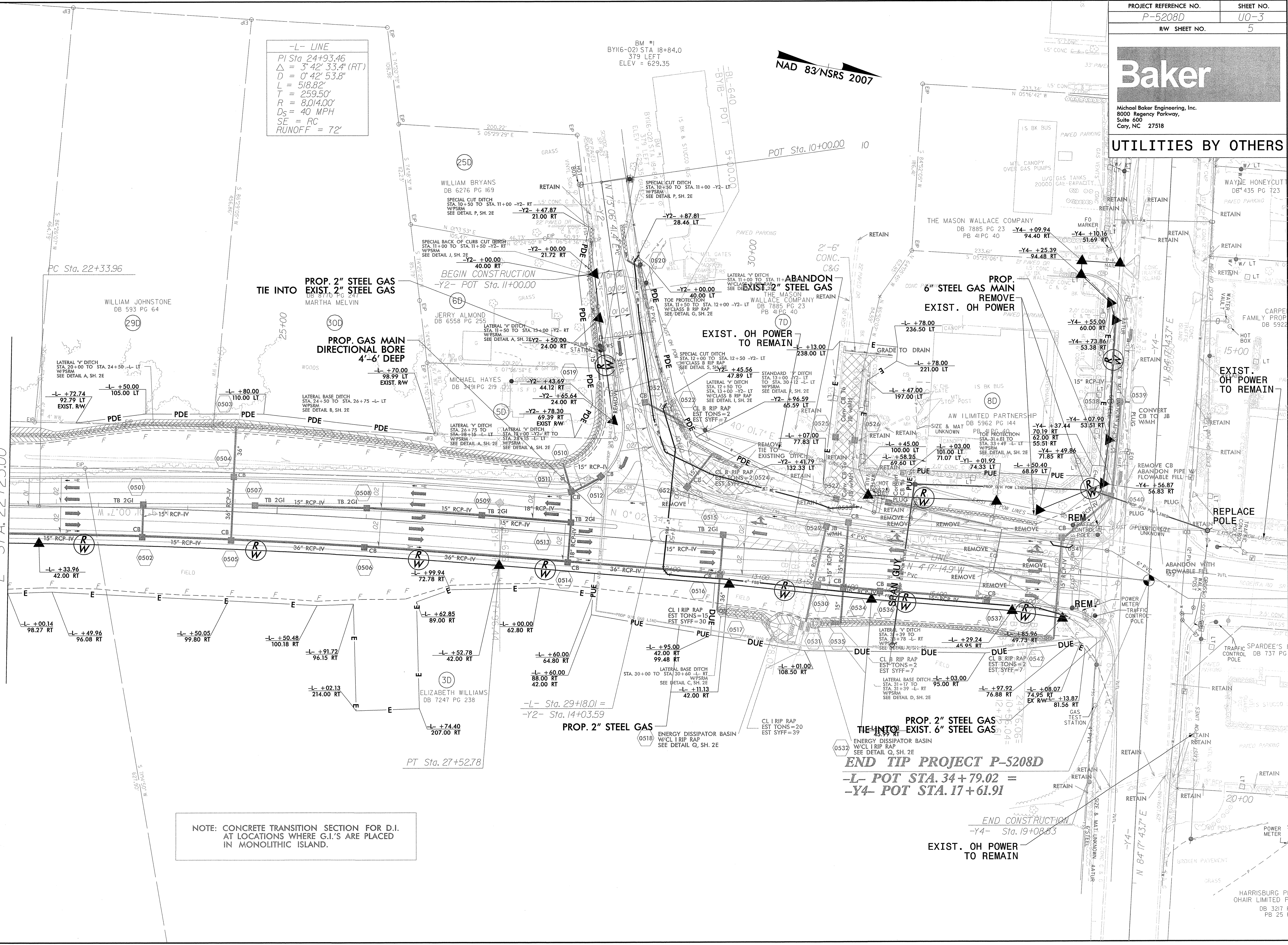
DCN  
0077DEL P10a4

**-L- LINE**  
 PI Sta. 24+93.46  
 $\Delta = 3' 42" 33.4" (RT)$   
 $D = 0' 42" 53.8"$   
 $L = 518.82'$   
 $T = 259.50'$   
 $R = 8,014.00'$   
 $D_s = 40 MPH$   
 $SE = RC$   
 $RUNOFF = 72'$

BM #1  
 BY16-02) STA 18+84.0  
 379 LEFT  
 ELEV = 629.35

NAD 83/NSRS 2007

MATCH LINE SEE SHEET U0-2  
 -L- STA. 22+25.00



NOTE: CONCRETE TRANSITION SECTION FOR D.I. AT LOCATIONS WHERE G.I.'S ARE PLACED IN MONOLITHIC ISLAND.

**END TIP PROJECT P-5208D**  
 -L- POT STA. 34+79.02 =  
 -Y4- POT STA. 17+61.91

END CONSTRUCTION  
 -Y4- Sta. 19+08.83  
 EXIST. OH POWER TO REMAIN

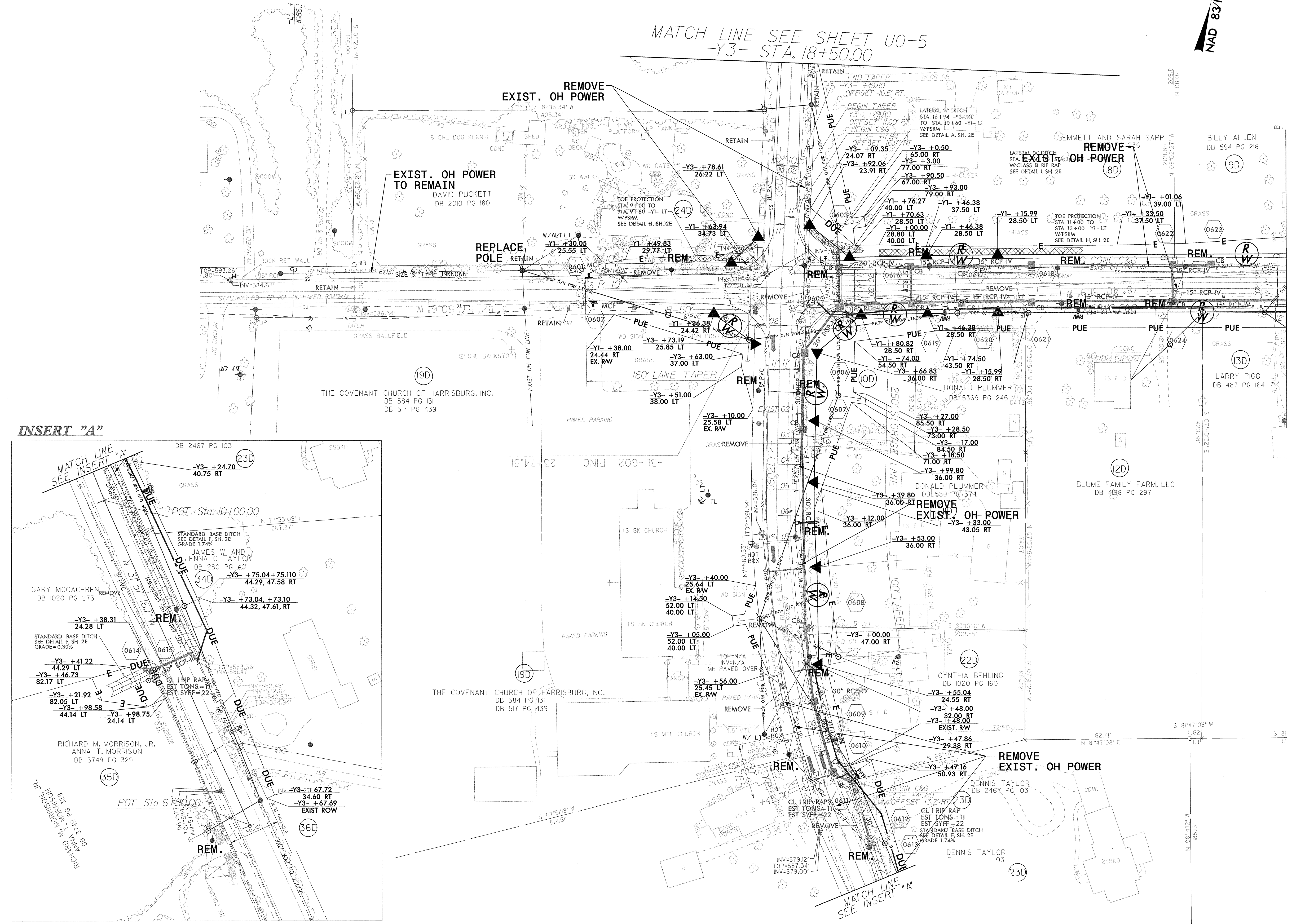
REVISIONS

01-MAR-2013 14:22  
 S:\Projects\5208D\DISCIPLINE\Utilities\5208D\_pcoord-U0-03.dgn  
 C:\Users\RALEWNE\Documents

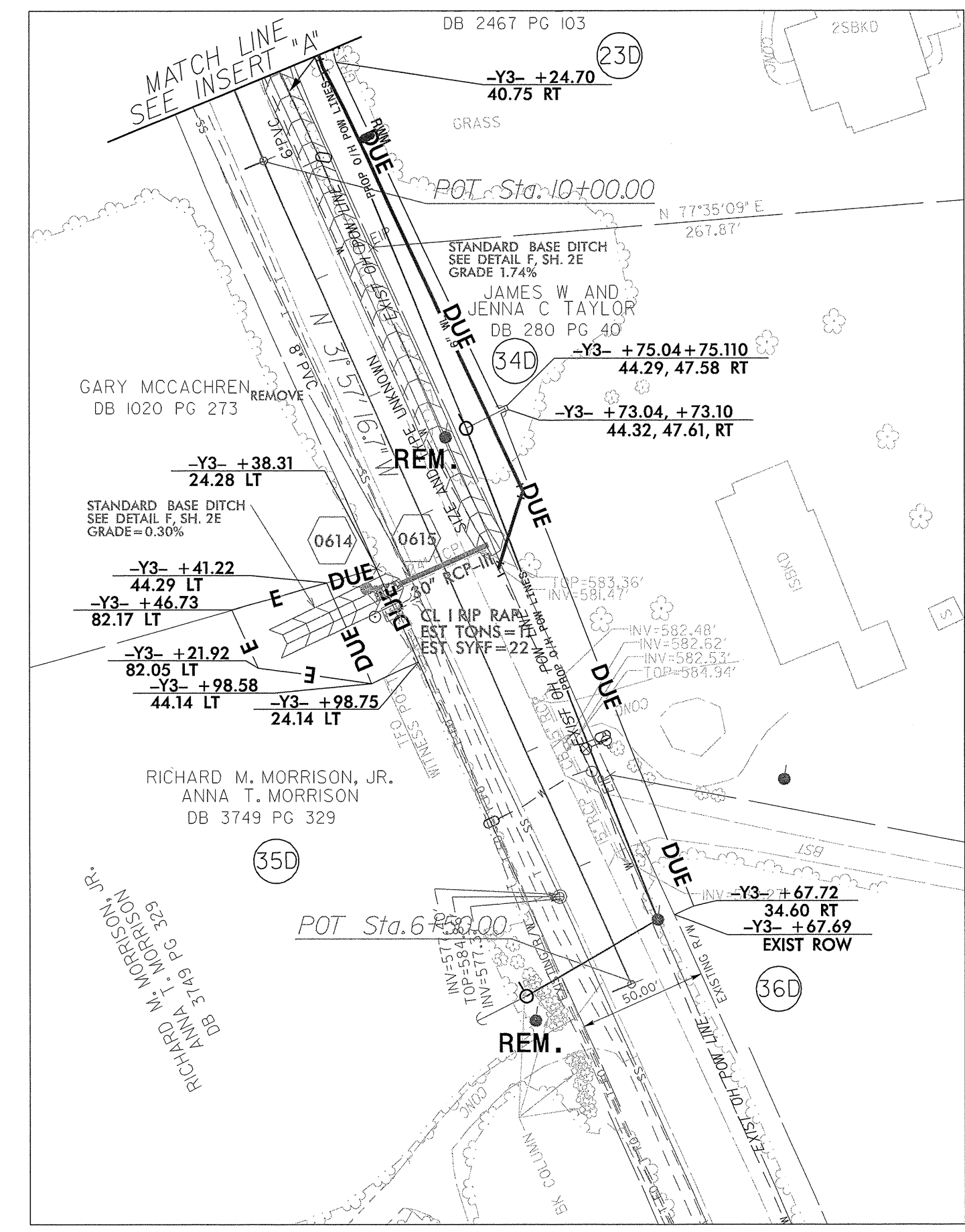
NAD 83 NRS 2007

MATCH LINE SEE SHEET U0-5  
-Y3- STA. 18+50.00

MATCH LINE SEE SHEET U0-2  
-Y1- STA. 15+50.00



INSERT "A"



REVISIONS

DCN  
0077DEL P10a4

0:\MAR-2013\431\Projects\5208D\DISCIPLINE\Utilities\pcoord-U0-04.dgn  
 Newsome  
 RICHARD M. MORRISON, JR.  
 ANNA T. MORRISON  
 DB 3749 PG 329

DCN  
0077DEL P10a4

PROJECT REFERENCE NO. P-5208D	SHEET NO. U0-5
RW SHEET NO. 7	
<b>Baker</b>	
Michael Baker Engineering, Inc. 8000 Regency Parkway, Suite 600 Cary, NC 27518	
<b>UTILITIES BY OTHERS</b>	



REVISIONS



MATCH LINE SEE SHEET U0-4  
-Y3- STA. 18+50.00

PI  
D  
L  
T  
R  
D  
S  
S  
E  
R  
U

TIE INT

01-MAR-2013 14:43  
X:\Projects\NC\DOT\_P-5208D\DISCIPLINE\Utilities\5208D-Coord-U0-05.dgn  
Newsome AT RAL E:\NEWSOME