

DCN: 0053DEL_P10a2

T.I.P.: P-5208B

CONTRACT: C203145

STATE OF NORTH CAROLINA
DEPARTMENT OF TRANSPORTATION

PAVEMENT MARKING PLAN
CABARRUS COUNTY

LOCATION: PHARR MILL ROAD /BLACKWELDER
ROAD GRADE SEPARATION OVER NCRR /NS

TIP NO. P - 5208B	SHEET NO. PMP - 1
APPROVED: _____	
DATE: _____	
SEAL	

INDEX

SHEET NO.	DESCRIPTION
PMP - 1	PAVEMENT MARKING PLAN COVER SHEET
PMP - 2	PAVEMENT MARKING SCHEDULE
PMP - 3 THRU 8	PAVEMENT MARKING DETAIL

GENERAL NOTES

THE FOLLOWING GENERAL NOTES APPLY AT ALL TIMES FOR THE DURATION OF THE CONSTRUCTION PROJECT, EXCEPT WHEN OTHERWISE NOTED IN THE PLAN, OR DIRECTED BY THE ENGINEER.

- A) INSTALL PAVEMENT MARKINGS AND PAVEMENT MARKERS ON THE FINAL SURFACE AS FOLLOWS:

ROAD NAME	MARKING	MARKER
ALL	THERMOPLASTIC	RAISED SNOWPLOWABLE
- B) TIE PROPOSED PAVEMENT MARKING LINES TO EXISTING PAVEMENT MARKING LINES.
- C) REMOVE/REPLACE ANY CONFLICTING/DAMAGED PAVEMENT MARKINGS AND MARKERS.
- D) STOP BAR LOCATION AT NON-SIGNALIZED INTERSECTIONS MAY BE ADJUSTED AS DIRECTED BY THE ENGINEER.
- E) REMOVE ALL RESIDUE AND SURFACE LAITANCE BY ACCEPTABLE METHODS ON THE CONCRETE SURFACES PRIOR TO PLACING THERMO PAVEMENT MARKING MATERIAL.
- F) ON ASPHALT SURFACES, USE HEATED-IN-PLACE THERMOPLASTIC OR EXTRUDED THERMOPLASTIC FOR STOP BARS, SYMBOLS, CHARACTERS AND DIAGONALS.
- G) ON CONCRETE SURFACES, USE HEATED-IN-PLACE THERMOPLASTIC OR COLD APPLIED PLASTIC FOR STOP BARS, SYMBOLS, CHARACTERS AND DIAGONALS.
- H) MARKERS SHALL BE INSTALLED ACCORDING TO THE NCDOT ROADWAY STANDARD DRAWING 1250.01.

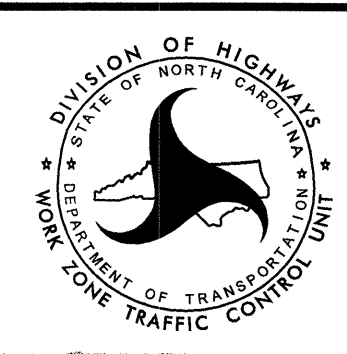
ROADWAY STANDARD DRAWING

THE FOLLOWING ROADWAY STANDARDS AS APPEAR IN "ROADWAY STANDARD DRAWINGS" - PROJECT SERVICES UNIT - N.C. DEPARTMENT OF TRANSPORTATION - RALEIGH, N.C., DATED JANUARY 2012 ARE APPLICABLE TO THIS PROJECT AND BY REFERENCE HEREBY ARE CONSIDERED A PART OF THESE PLANS:

STD. NO.	TITLE
1205.01	PAVEMENT MARKINGS - LINE TYPES AND OFFSETS
1205.02	PAVEMENT MARKINGS - TWO-LANE AND MULTILANE ROADWAYS
1205.04	PAVEMENT MARKINGS - INTERSECTIONS
1205.05	PAVEMENT MARKINGS - TURN LANES
1205.08	PAVEMENT MARKINGS - SYMBOLS AND WORD MESSAGES
1205.09	PAVEMENT MARKINGS - PAINTED ISLANDS
1205.11	PAVEMENT MARKINGS - RAILROAD CROSSINGS
1205.12	PAVEMENT MARKINGS - BRIDGES
1250.01	RAISED PAVEMENT MARKERS - INSTALLATION SPACING
1251.01	RAISED PAVEMENT MARKERS - PERMANENT AND TEMPORARY
1253.01	RAISED PAVEMENT MARKERS - SNOWPLOWABLE
1261.01	GUARDRAIL AND BARRIER DELINEATOR - SPACING
1261.02	GUARDRAIL AND BARRIER DELINEATOR - TYPES
1262.01	GUARDRAIL END DELINEATION
1264.01	OBJECT MARKERS - TYPES
1264.02	OBJECT MARKERS - INSTALLATION

PLAN REVIEWED BY: N.C.D.O.T. SIGNING AND DELINEATION UNIT

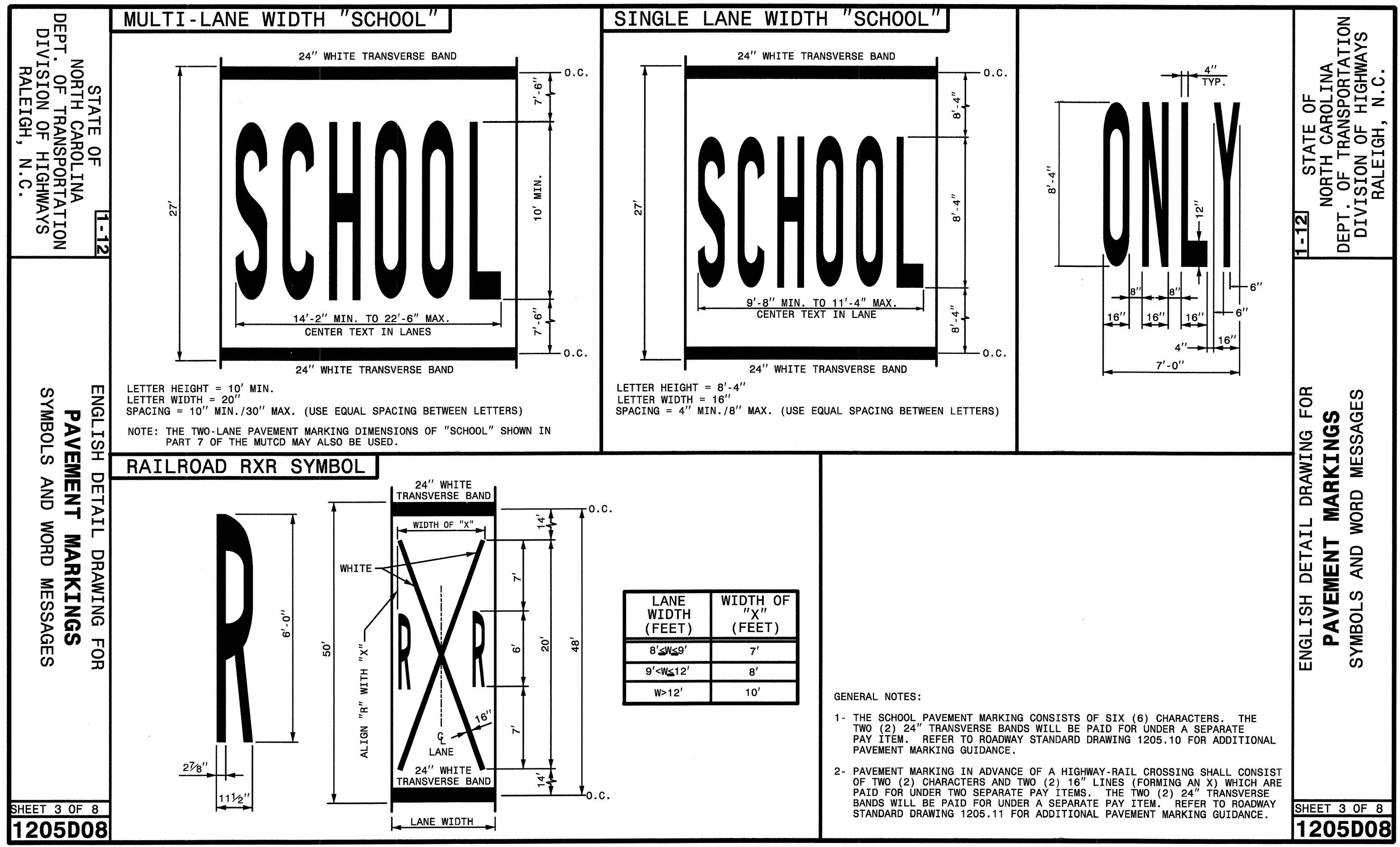
KELVIN L. JORDAN SIGNING & DELINEATION REGIONAL ENGINEER
JOSE G. MARTINEZ SIGNING & DELINEATION PROJECT DESIGN ENGINEER



PLAN PREPARED BY: SEPI ENGINEERING & CONST.

JEFFREY HOCHANADEL, PE TRANSPORTATION ENGINEER
JOSEPH KOPASKIE, PE DESIGN ENGINEER





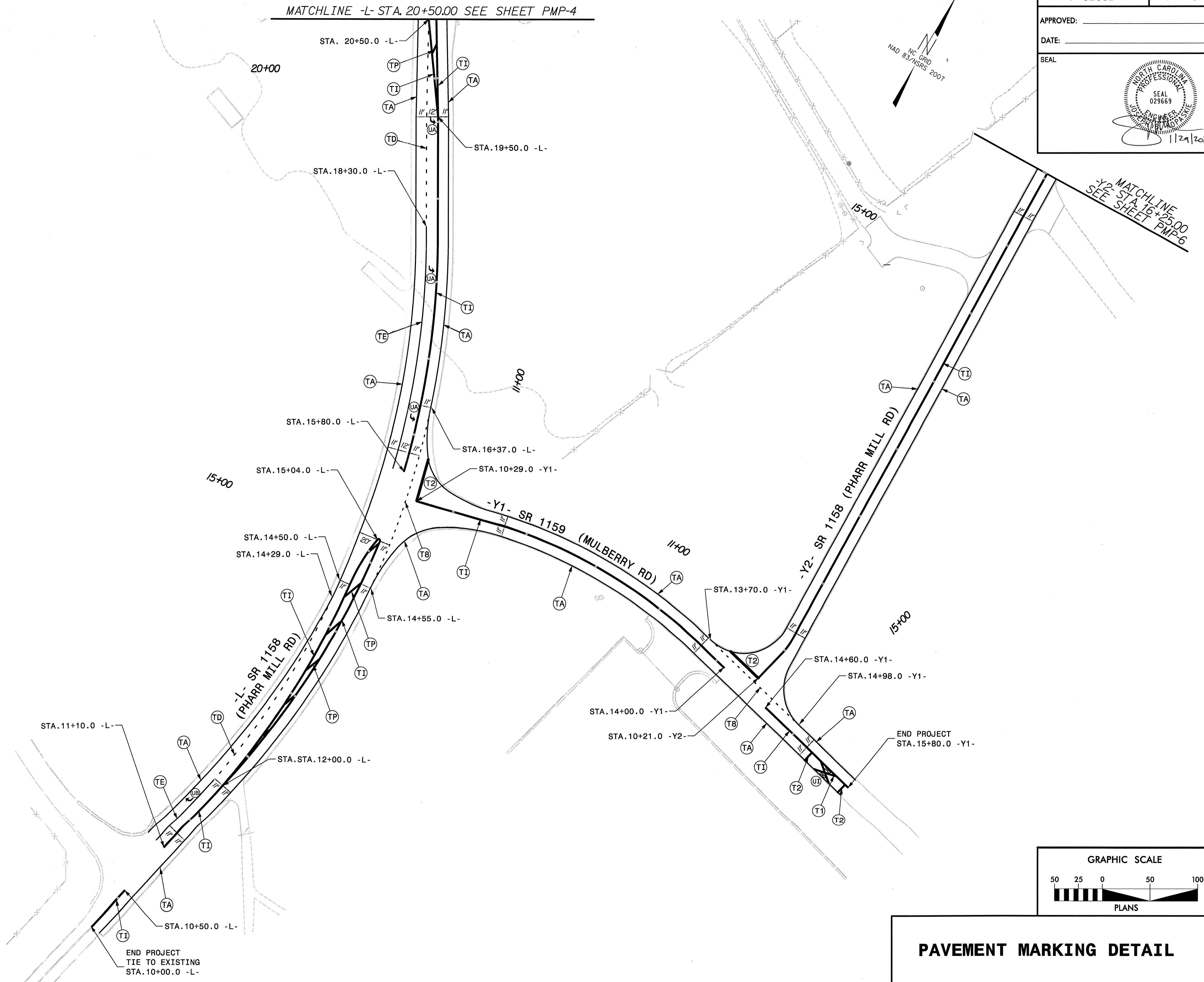
PAVEMENT MARKING SCHEDULE

SYMBOL	DESCRIPTION
	THERMOPLASTIC (4", 90 MILS)
TA	WHITE EDGELINE
TB	YELLOW EDGELINE
	THERMOPLASTIC (4", 120 MILS)
TC	10 FT. WHITE SKIP
TD	3 FT. - 9 FT./SP WHITE MINISKIP
TE	WHITE SOLID LANE LINE
TF	10 FT. YELLOW SKIP
TH	YELLOW SINGLE CENTER
TI	YELLOW DOUBLE CENTER
T8	2 FT. - 6 FT./SP WHITE MINISKIP
	THERMOPLASTIC (8", 90 MILS)
TN	WHITE GORELINE
TO	WHITE DIAGONAL
TP	YELLOW DIAGONAL
	THERMOPLASTIC (16", 120 MILS)
T1	RR X
	THERMOPLASTIC (24", 120 MILS)
T2	WHITE STOPBAR
	THERMOPLASTIC PAVEMENT MARKING SYMBOLS (90 MILS)
UA	LEFT TURN ARROW
UB	RIGHT TURN ARROW
UC	STRAIGHT ARROW
UE	COMBO. STRAIGHT/RIGHT
UT	U-TURN ARROW
	THERMOPLASTIC PAVEMENT MARKING SYMBOLS (120 MILS)
UI	ALPHA-NUMERIC CHARACTER
	PERMANENT RAISED PAVEMENT MARKERS
◻	CRYSTAL AND RED
◼	YELLOW AND YELLOW

STATE OF NORTH CAROLINA DEPARTMENT OF TRANSPORTATION DIVISION OF HIGHWAYS RALEIGH, N.C.

DCN: 0053DEL_P10a2

TIP NO. P-5208B	SHEET NO. PMP-3
APPROVED: _____	
DATE: _____	
SEAL	



SEPI
ENGINEERING & CONSTRUCTION

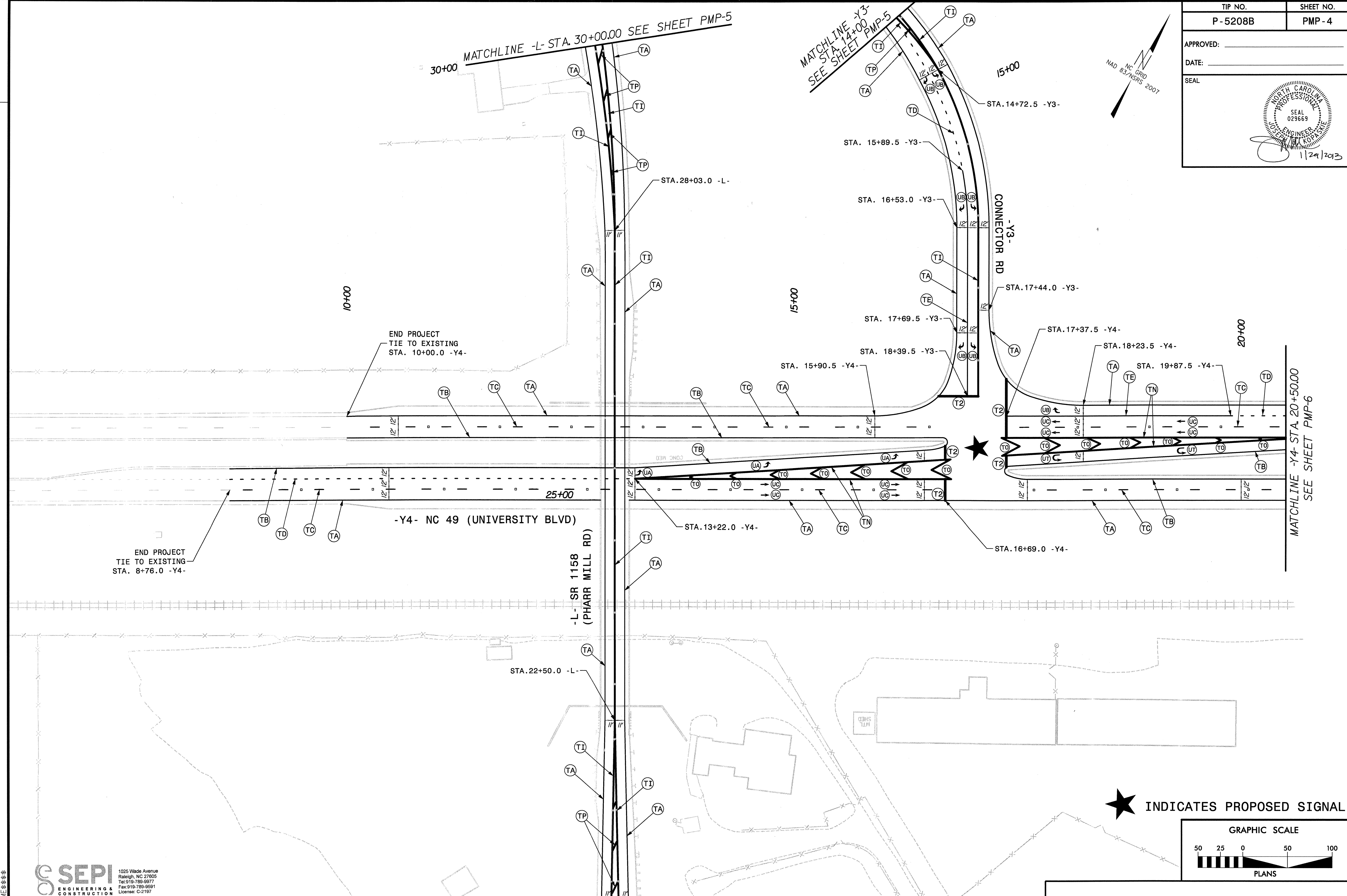
1025 Wade Avenue
Raleigh, NC 27605
Tel: 919-789-9577
Fax: 919-789-9591
License: C-2197

\$\$\$\$\$SYTIME\$\$\$\$\$
\$\$\$\$\$DCN\$\$\$\$\$
\$\$\$\$\$SUBSERNAME\$\$\$\$\$

PAVEMENT MARKING DETAIL

DCN: 0053DEL P10a2

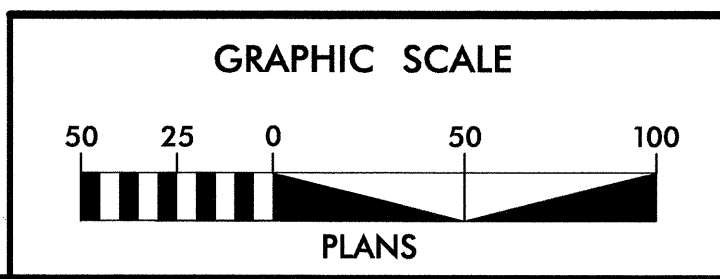
TIP NO. P - 5208B	SHEET NO. PMP - 4
APPROVED: _____	
DATE: _____	
SEAL	



END PROJECT TIE TO EXISTING STA. 8+76.0 -Y4-

END PROJECT TIE TO EXISTING STA. 10+00.0 -Y4-

★ INDICATES PROPOSED SIGNAL



SEPI
ENGINEERING & CONSTRUCTION

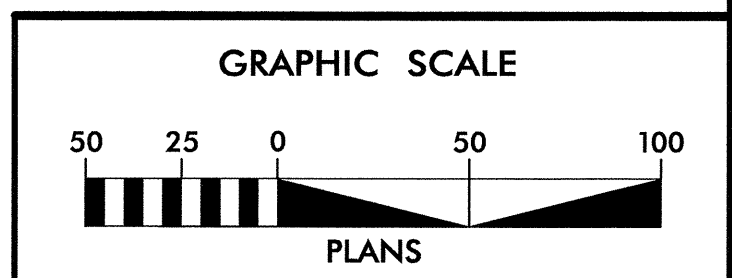
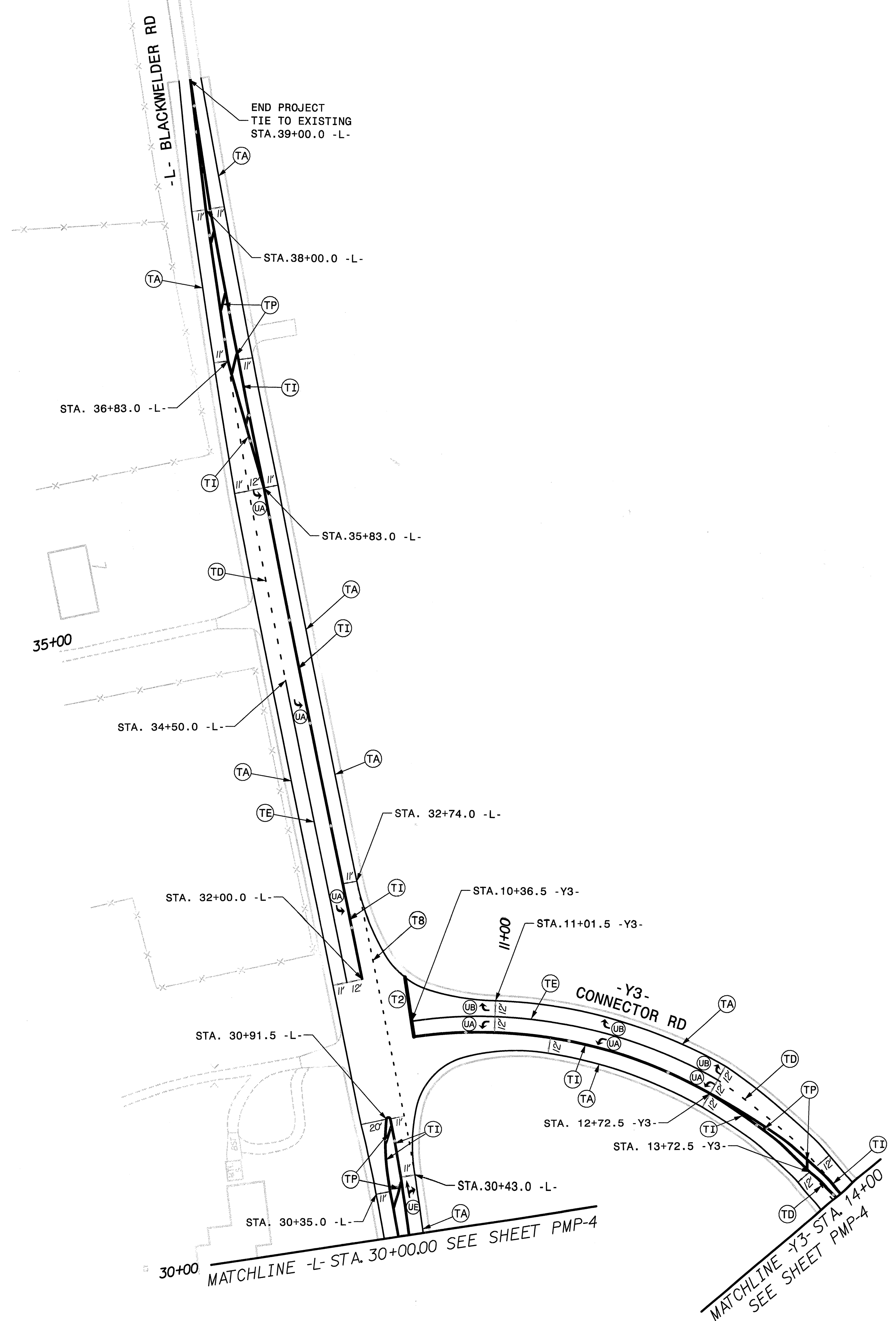
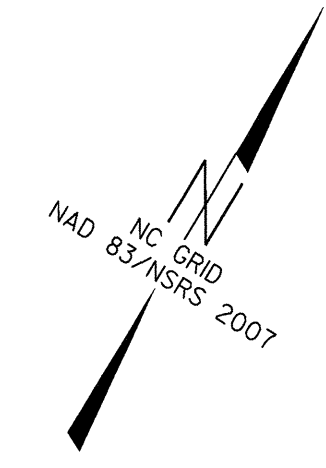
1025 Wade Avenue
Raleigh, NC 27605
Tel: 919-789-9977
Fax: 919-789-9591
License: C-2197

PAVEMENT MARKING DETAIL

\$\$\$\$\$SYTIME\$\$\$\$\$
\$\$\$\$\$DONS\$\$\$\$\$
\$\$\$\$\$SERNAME\$\$\$\$\$

DCN:
0053DEL P10a2

TIP NO. P-5208B	SHEET NO. PMP-5
APPROVED: _____	
DATE: _____	
SEAL	



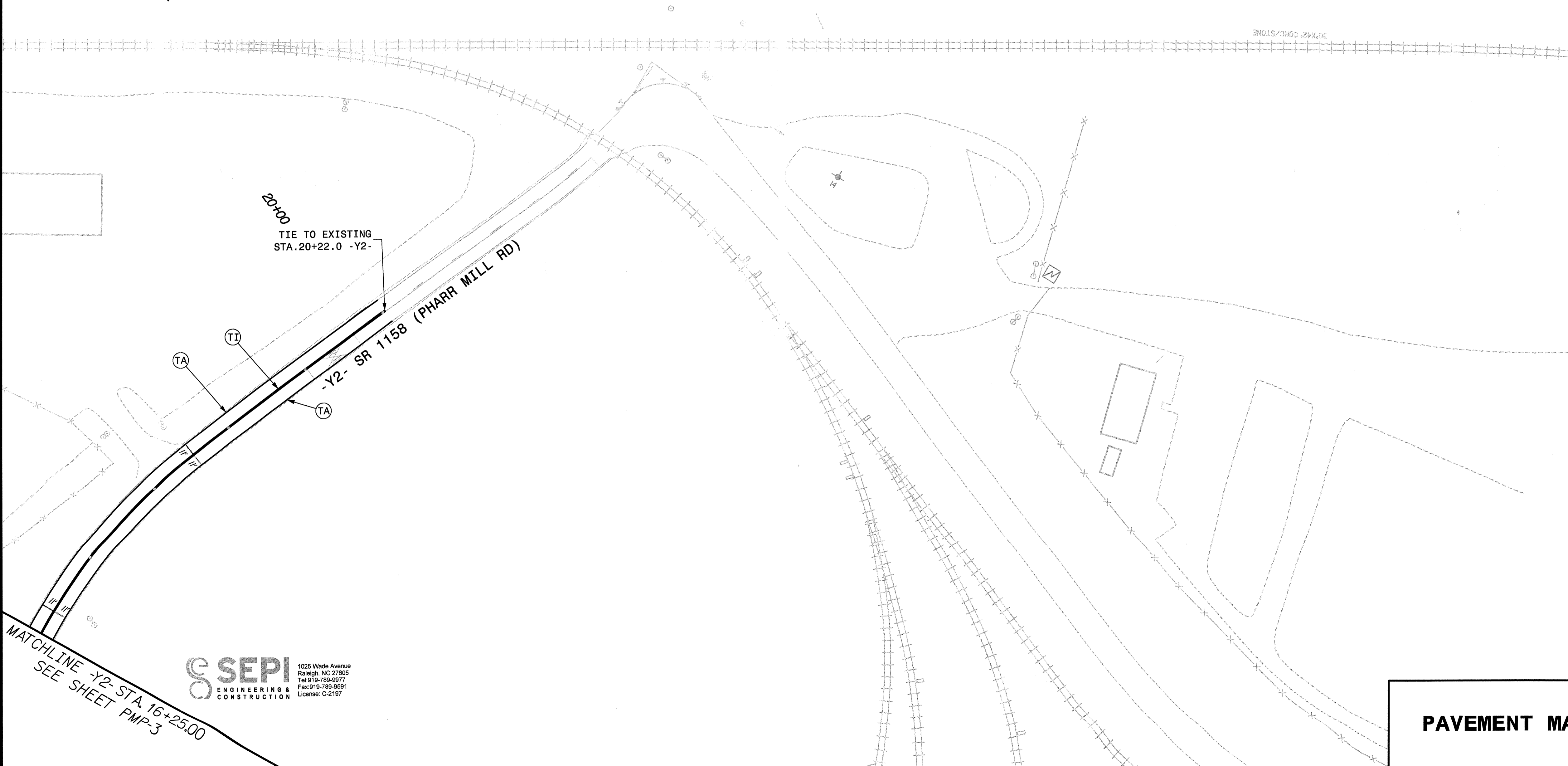
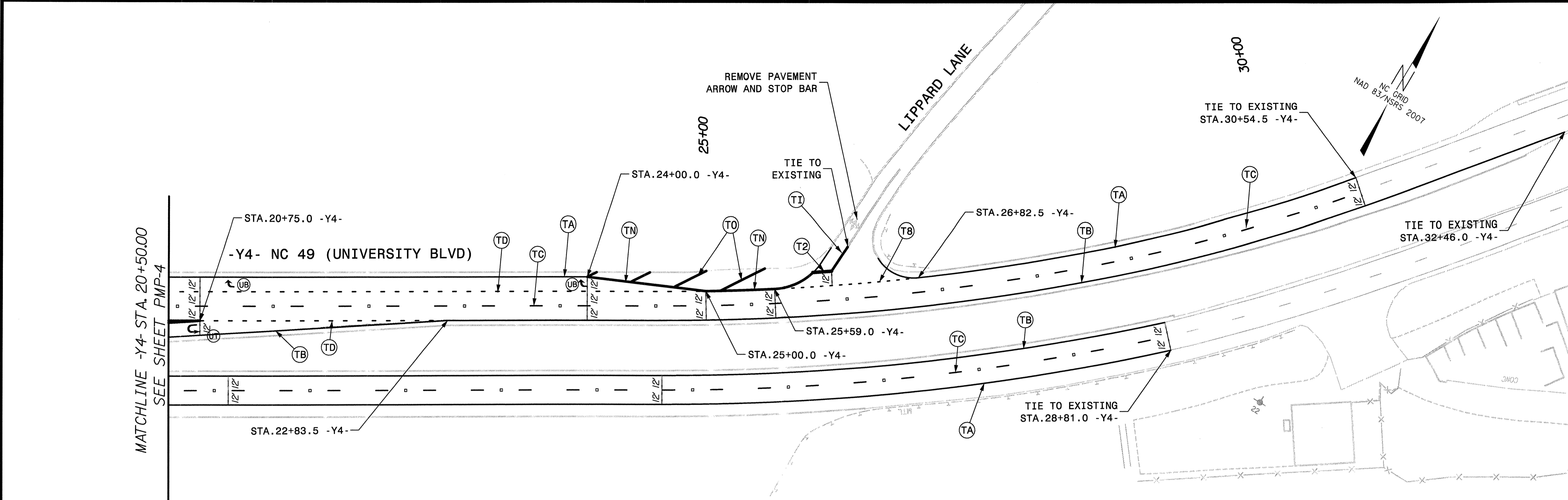
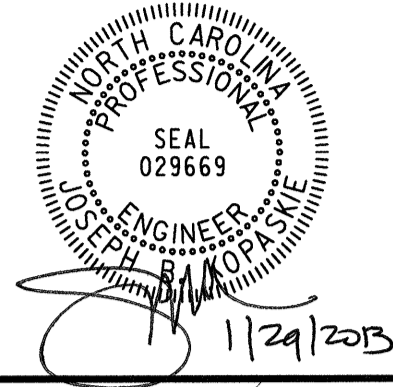
PAVEMENT MARKING DETAIL

SEPI
ENGINEERING & CONSTRUCTION
1025 Wade Avenue
Raleigh, NC 27605
Tel: 919-788-9977
Fax: 919-788-9591
License: C-2197

\$\$\$\$\$SYTIME\$\$\$\$\$DCN\$\$\$\$\$SUBSERIAL\$\$\$\$\$

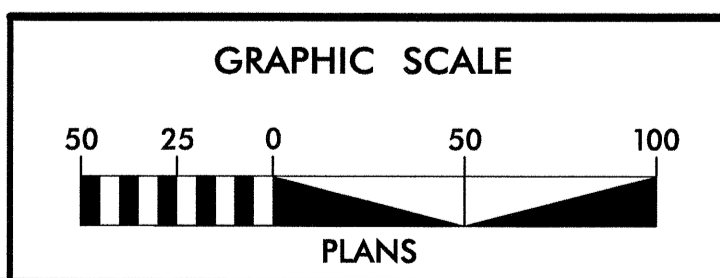
DCN:
0053DEL_P10a2

TIP NO. P - 5208B	SHEET NO. PMP - 6
APPROVED: _____	
DATE: _____	
SEAL	



SEPI
ENGINEERING & CONSTRUCTION


1025 Wade Avenue
Raleigh, NC 27605
Tel: 919-789-9977
Fax: 919-789-9591
License: C-2197

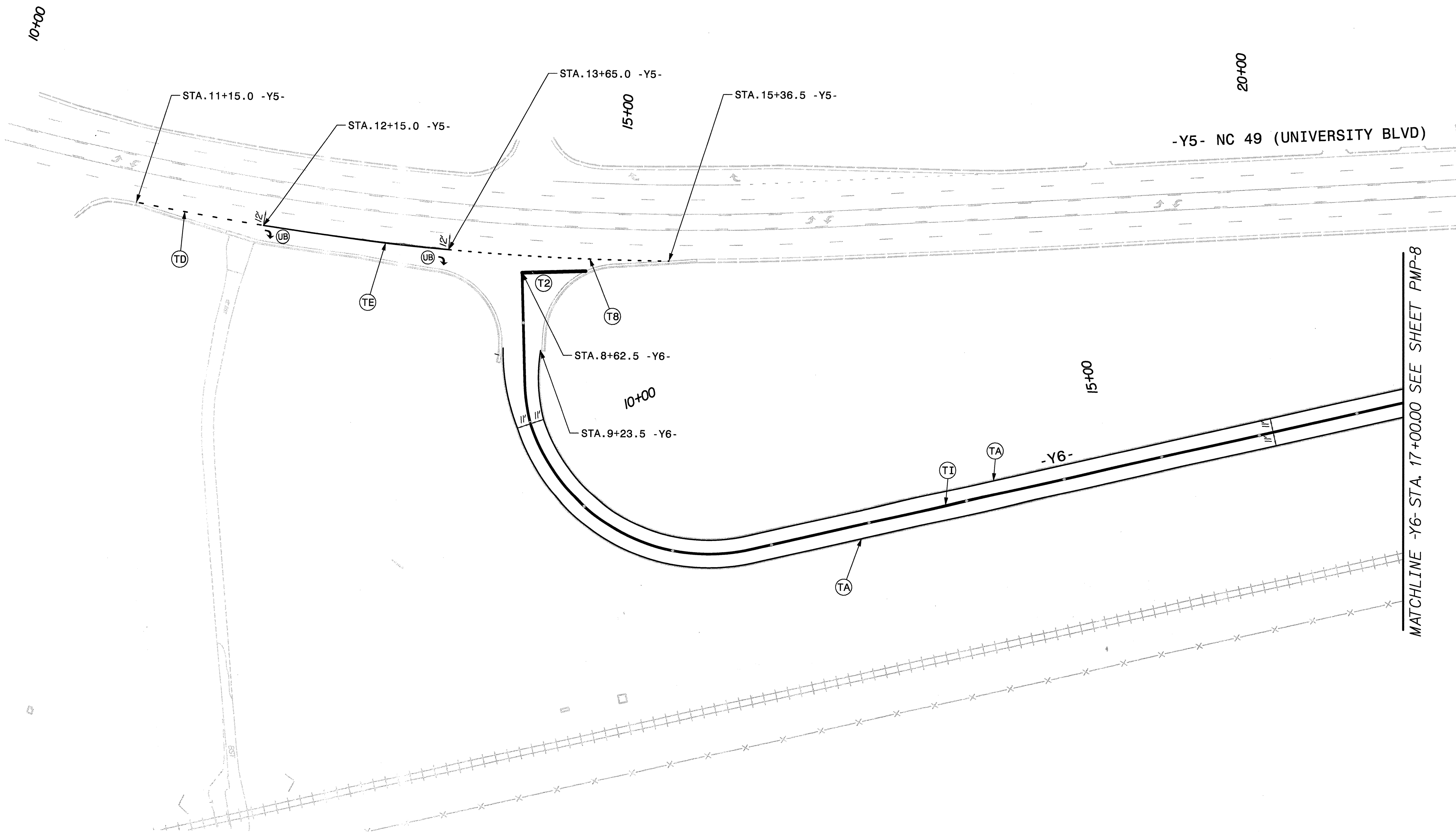
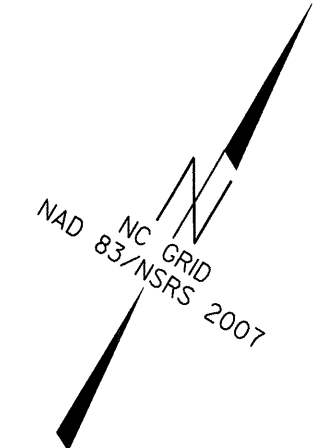


PAVEMENT MARKING DETAIL

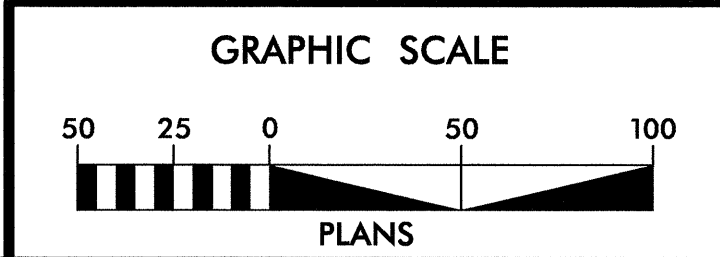
\$\$\$\$\$SYTIME\$\$\$\$\$
\$\$\$\$\$DCN\$\$\$\$\$
\$\$\$\$\$SERNAME\$\$\$\$\$

DCN:
0053DEL_P10a2

TIP NO.	SHEET NO.
P - 5208B	PMP - 7
APPROVED: _____	
DATE: _____	
SEAL	
	
1/29/2013	



SEPI
ENGINEERING &
CONSTRUCTION
1025 Wade Avenue
Raleigh, NC 27605
Tel: 919-789-9977
Fax: 919-789-9591
License: C-2197



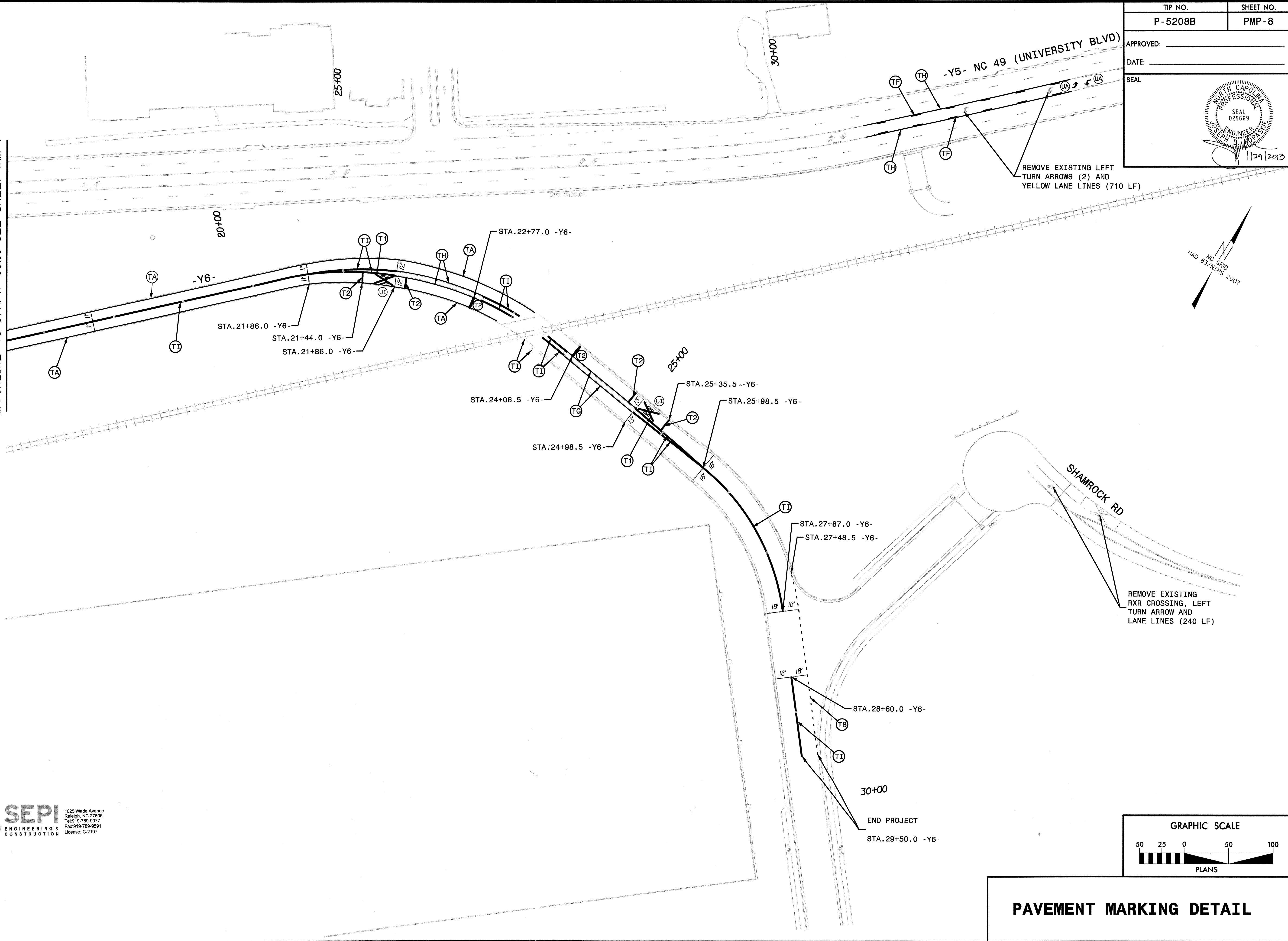
PAVEMENT MARKING DETAIL

\$\$\$\$\$SYTIME\$\$\$\$\$
\$\$\$\$\$DCN\$\$\$\$\$
\$\$\$\$\$USERNAME\$\$\$\$\$

DCN: 0053DEL P10a2

TIP NO. P - 5208B	SHEET NO. PMP - 8
APPROVED: _____	
DATE: _____	
SEAL	

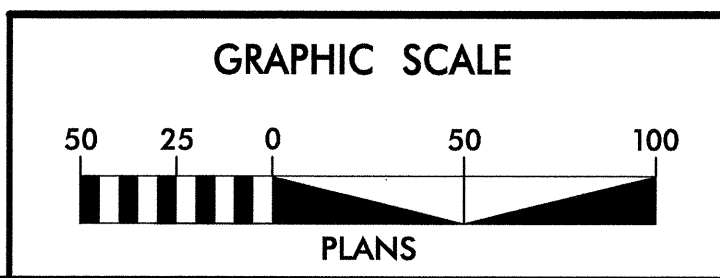
MATCHLINE -Y6- STA. 17+00.00 SEE SHEET PMP-7



REMOVE EXISTING LEFT TURN ARROWS (2) AND YELLOW LANE LINES (710 LF)

REMOVE EXISTING RXR CROSSING, LEFT TURN ARROW AND LANE LINES (240 LF)

SEPI
ENGINEERING & CONSTRUCTION
1025 Wade Avenue
Raleigh, NC 27605
Tel: 919-789-9977
Fax: 919-789-9991
License: C-2197



PAVEMENT MARKING DETAIL

\$\$\$\$\$SYTIME\$\$\$\$\$
\$\$\$\$\$DCN\$\$\$\$\$
\$\$\$\$\$USERNAME\$\$\$\$\$