

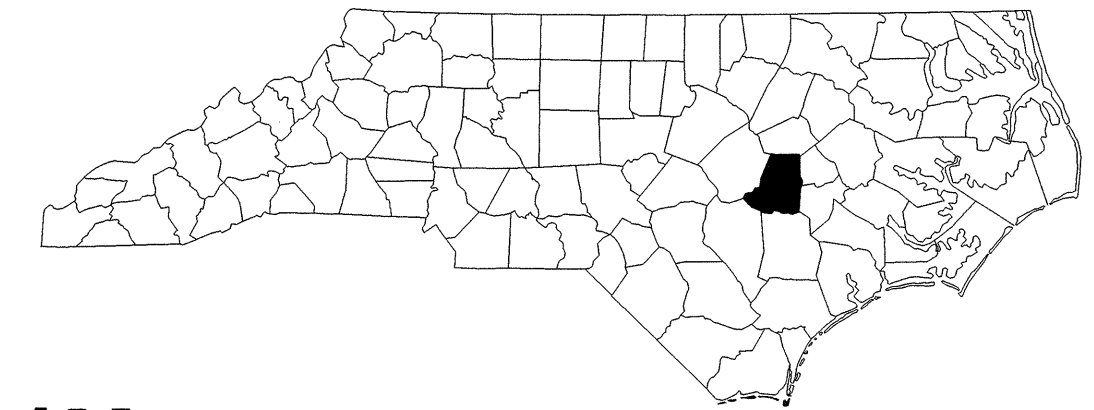
09/08/99

TIP PROJECT: B-4841

T.I.P. NO.	SHEET NO.
B-4841	UO-1

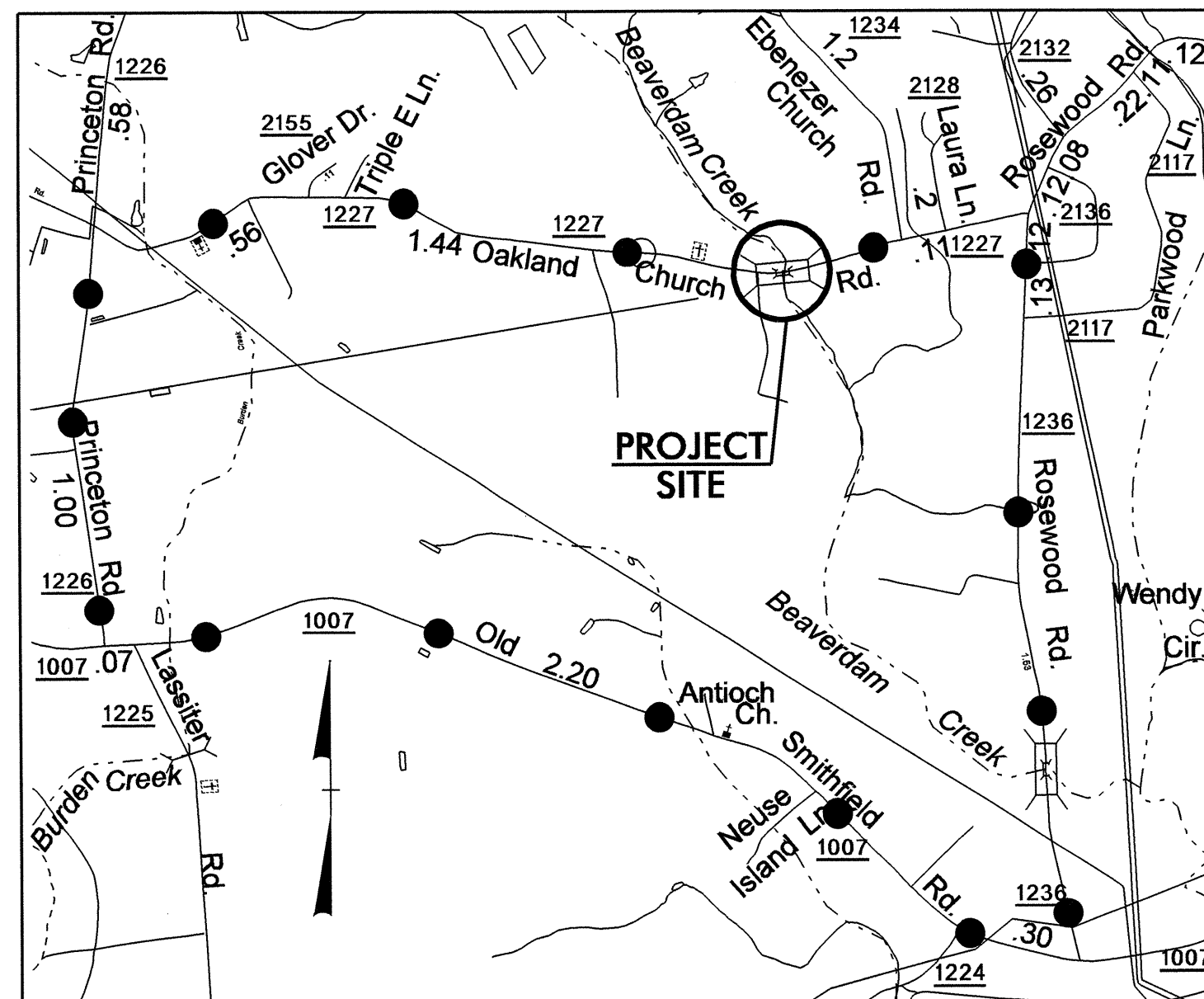
STATE OF NORTH CAROLINA
DIVISION OF HIGHWAYS

**UTILITIES BY OTHERS PLANS
WAYNE COUNTY**



LOCATION: BRIDGE NO. 215 AND APPROACHES OVER BEAVERDAM CREEK ON SR 1227 (OAKLAND CHURCH RD)

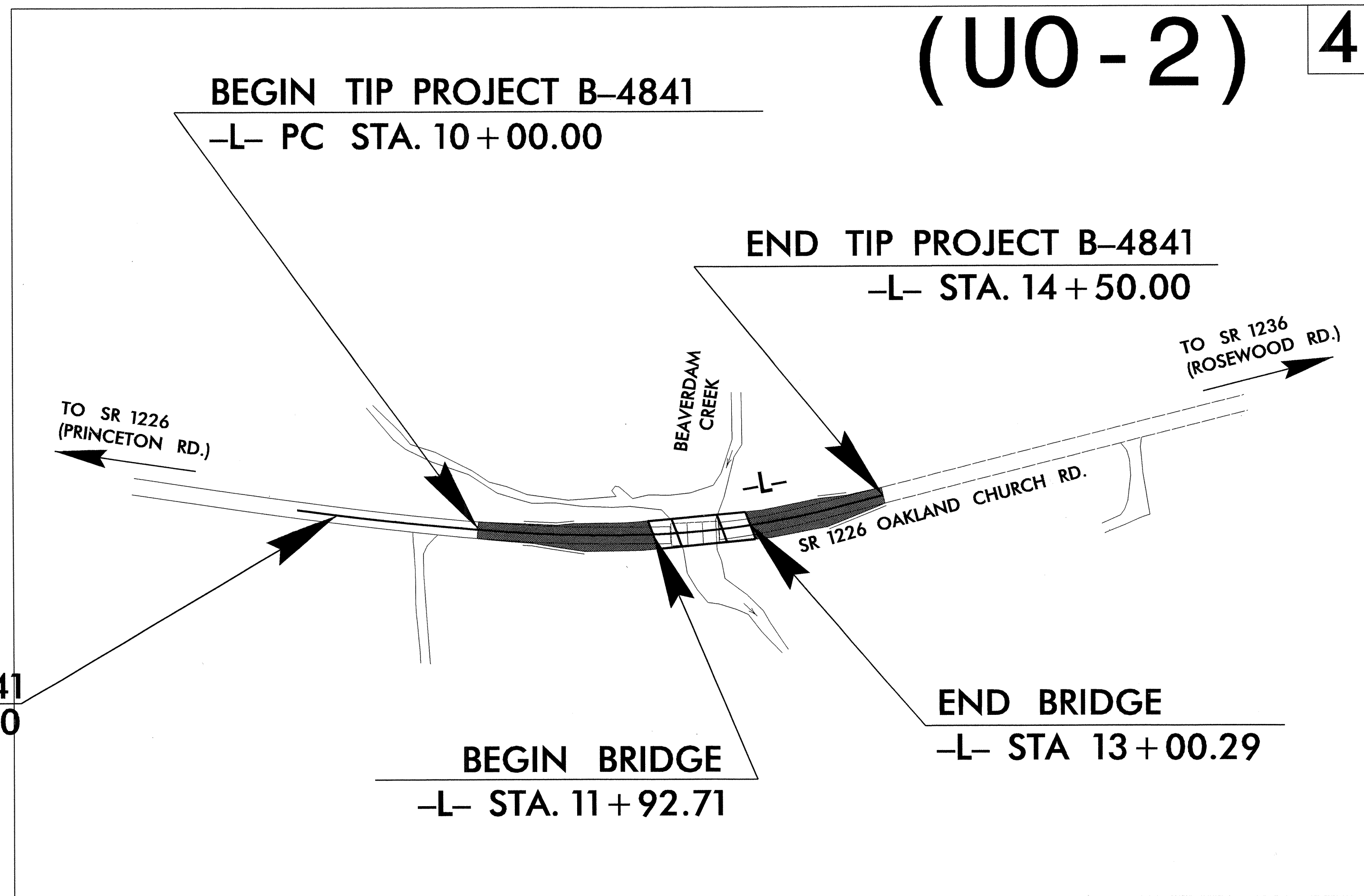
TYPE OF WORK: UTILITIES RELOCATION



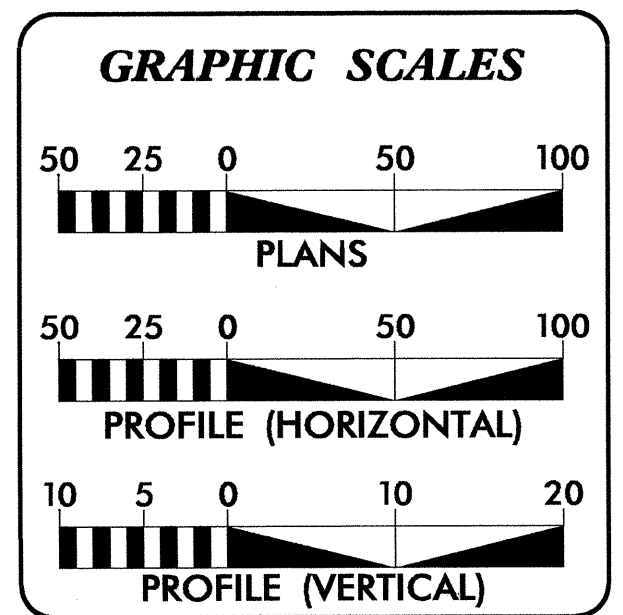
VICINITY MAP

● — ● — ● OFF-SITE DETOUR

(UO-2) 4



BEGIN CONSTRUCTION TIP B-4841
-L- POC STA. 8+30.00



INDEX OF SHEETS

SHEET NO.	DESCRIPTION
UO-1	TITLE SHEET
UO-2	PLAN SHEET

UTILITY OWNERS ON PROJECT

- Tri- County EMC (Power)
- AT&T (Telephone)
- Fork Township Sanitary District (Water)

PREPARED IN THE OFFICE OF:
**DIVISION OF HIGHWAYS
UTILITIES ENGINEERING SECTION**

1591 MAIL SERVICES CENTER
RALEIGH, NC 27699-1591
PHONE (919) 707-6690
FAX (919) 250-4151

Roger Worthington, P.E. UTILITIES SECTION ENGINEER
Corey Bousquet, P.E. UTILITIES SQUAD LEADER PROJECT ENGINEER
Nabil Hamdan UTILITIES PROJECT DESIGNER

23-AUG-2012 14:04
P:\Utilities\RDY-UT\Proj\B4841.Rdy-tsh_u01.dgn
\$\$\$\$\$USERNAME\$\$\$\$\$

