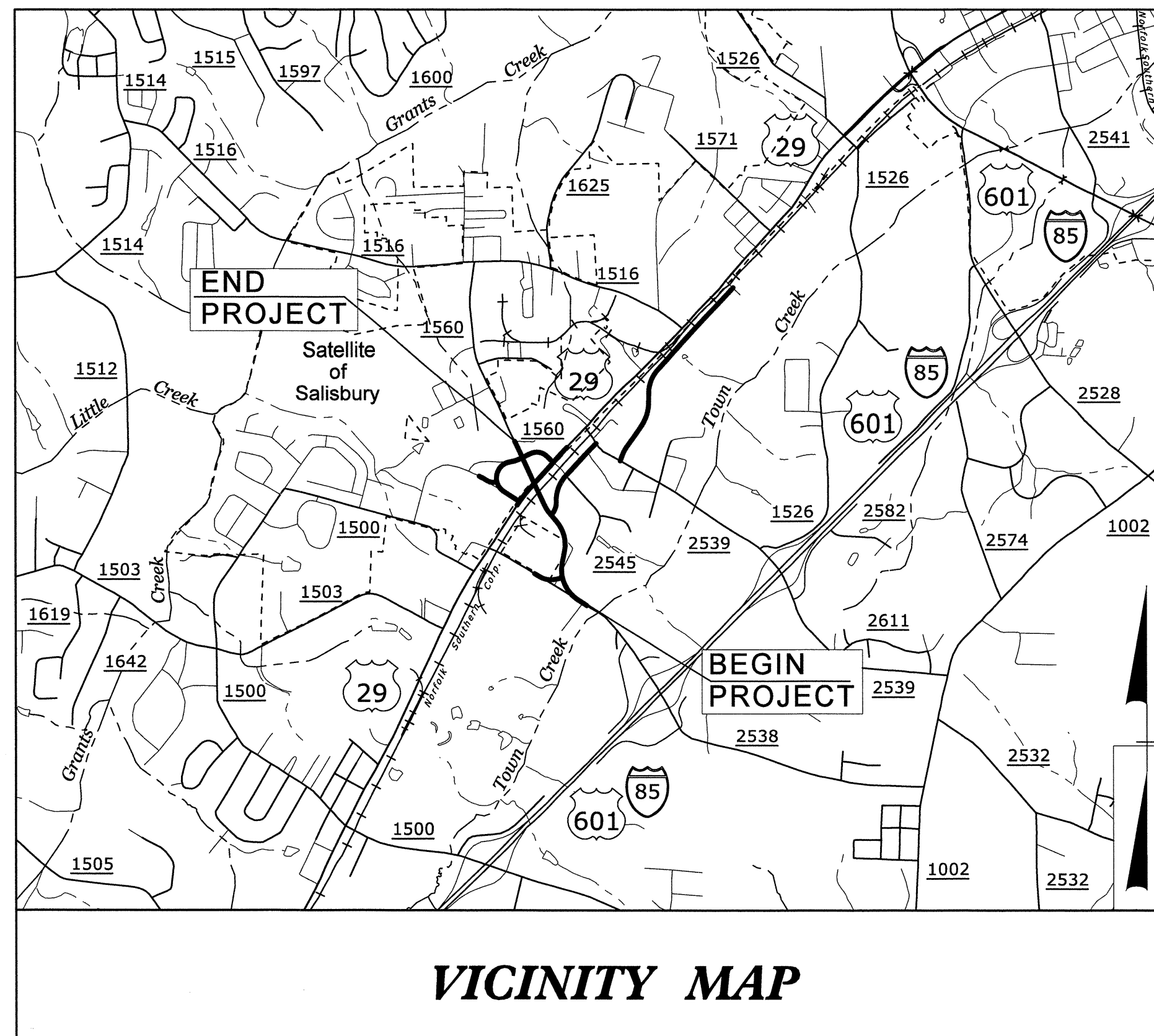
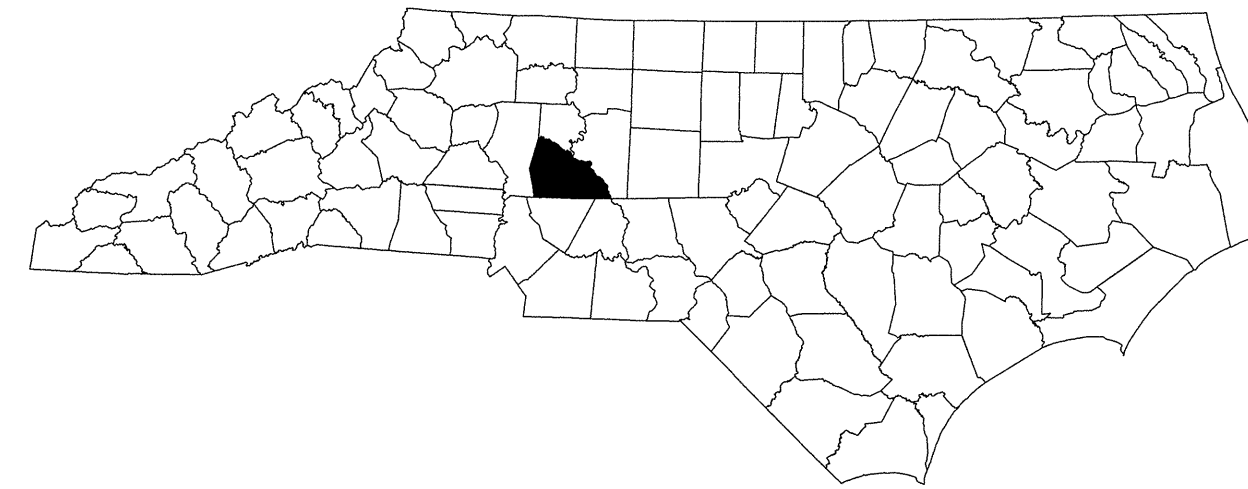


STATE OF NORTH CAROLINA
DIVISION OF HIGHWAYS



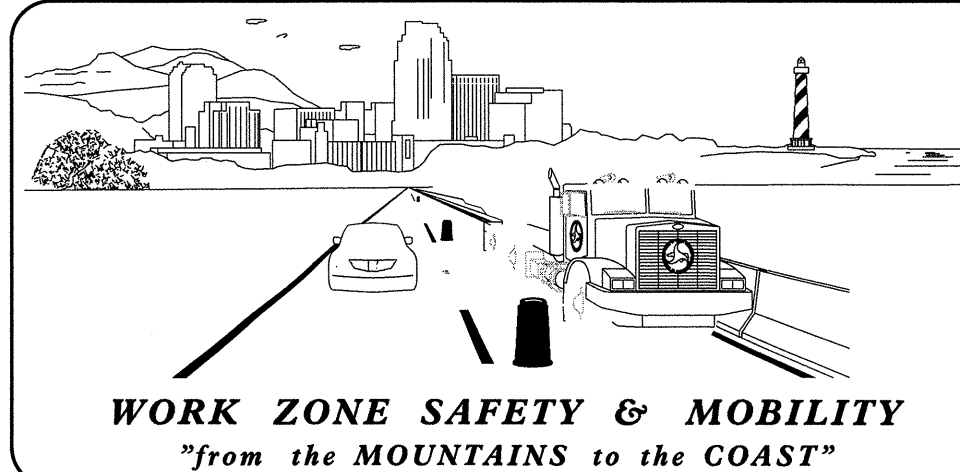
TRANSPORTATION MANAGEMENT PLAN

ROWAN COUNTY



VICINITY MAP

SHEET NO.	TITLE
TMP-1	TITLE SHEET, AND INDEX OF SHEETS
TMP-1A	LIST OF APPLICABLE ROADWAY STANDARD DRAWINGS, LEGEND, AND TEMPORARY PAVEMENT MARKING
TMP-2	GENERAL NOTES
TMP-3	PHASING
TMP-4	PHASE I OVERVIEW
TMP-5	PHASE I DETAIL
TMP-6	DETOUR
TMP-7	PHASE II OVERVIEW
TMP-8 THRU 10	PHASE II DETAILS
TMP-11	PHASE III OVERVIEW
TMP-12	PHASE IV OVERVIEW



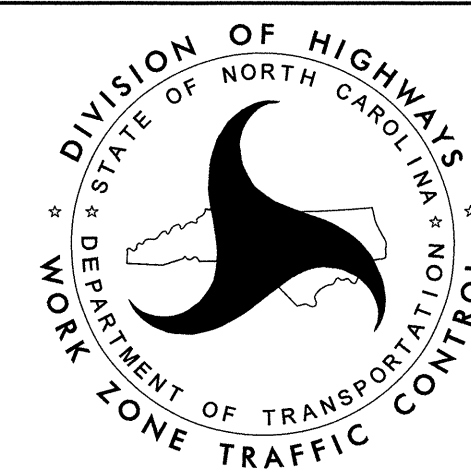
N.C.D.O.T. WORK ZONE TRAFFIC CONTROL
1561 MAIL SERVICE CENTER (MSC) RALEIGH, NC 27699-1561
750 N. GREENFIELD PARKWAY, GARNER, NC 27529 (DELIVERY)
PHONE: (919) 773-2800 FAX: (919) 771-2745

J. S. BOURNE, P.E. STATE TRAFFIC MANAGEMENT ENGINEER

TRAFFIC CONTROL PROJECT ENGINEER

TRAFFIC CONTROL PROJECT DESIGN ENGINEER

TRAFFIC CONTROL DESIGN ENGINEER



FH Florence & Hutcheson
CONSULTING ENGINEERS
5121 Kingdom Way, Suite 100 Raleigh, NC 27607
NC License No: P-0258

APPROVED: *[Signature]*
DATE: 1-8-13

SEAL

ROADWAY STANDARD DRAWINGS

THE FOLLOWING ROADWAY STANDARDS AS SHOWN IN "ROADWAY STANDARD DRAWINGS" - PROJECT SERVICES UNIT - N.C. DEPARTMENT OF TRANSPORTATION - RALEIGH, N.C., DATED JULY 2006 ARE APPLICABLE TO THIS PROJECT AND BY REFERENCE HEREBY ARE CONSIDERED A PART OF THESE PLANS:

STD. NO.	TITLE
1101.01	WORK ZONE ADVANCE WARNING SIGNS
1101.02	TEMPORARY LANE CLOSURES
1101.03	TEMPORARY ROAD CLOSURES
1101.04	TEMPORARY SHOULDER CLOSURES
1101.05	WORK ZONE VEHICLE ACCESSES
1101.11	TRAFFIC CONTROL DESIGN TABLES
1110.01	STATIONARY WORK ZONE SIGNS
1110.02	PORTABLE WORK ZONE SIGNS
1130.01	DRUMS
1135.01	CONES
1145.01	BARRICADES
1150.01	FLAGGING DEVICES
1160.01	TEMPORARY CRASH CUSHION
1165.01	TRUCK MOUNTED IMPACT ATTENUATOR
1170.01	PORTABLE CONCRETE BARRIER
1180.01	SKINNY-DRUM
1205.01	PAVEMENT MARKINGS - LINE TYPES & OFFSETS
1205.02	PAVEMENT MARKINGS - 2 LANE & MULTILANE ROADWAYS
1205.12	PAVEMENT MARKINGS - BRIDGES
1250.01	PAVEMENT MARKER SPACING
1251.01	RAISED PAVEMENT MARKERS - (TEMPORARY)

LEGEND

GENERAL

- DIRECTION OF TRAFFIC FLOW
- DIRECTION OF PEDESTRIAN TRAFFIC FLOW
- EXIST. PVMT.
- NORTH ARROW
- PROPOSED PVMT.

- WORK AREA
- WORK CONTINUED
- REMOVAL

TRAFFIC CONTROL DEVICES

- BARRICADE (TYPE III)
- CONE
- DRUM SKINNY DRUM TUBULAR MARKER
- TEMPORARY CRASH CUSHION
- FLASHING ARROW PANEL (TYPE C)
- FLAGGER
- LAW ENFORCEMENT
- TRUCK MOUNTED IMPACT ATTENUATOR (TMIA)
- CHANGEABLE MESSAGE SIGN

TEMPORARY SIGNING

- PORTABLE SIGN
- STATIONARY SIGN
- STATIONARY OR PORTABLE SIGN

SIGNALS

- EXISTING
- PROPOSED
- TEMPORARY

PAVEMENT MARKINGS

- EXISTING LINES
- TEMPORARY LINES

PAVEMENT MARKERS

- CRYSTAL/CRYSTAL
- CRYSTAL/RED
- YELLOW/YELLOW

PAVEMENT MARKING SYMBOLS

- PAVEMENT MARKING SYMBOLS

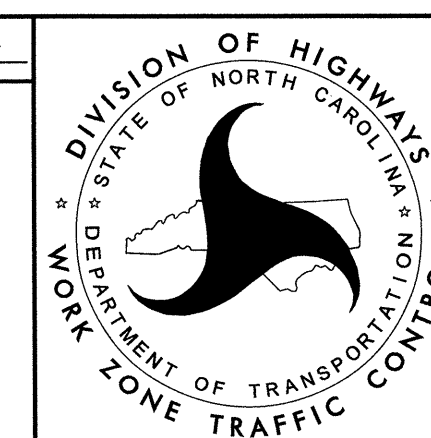
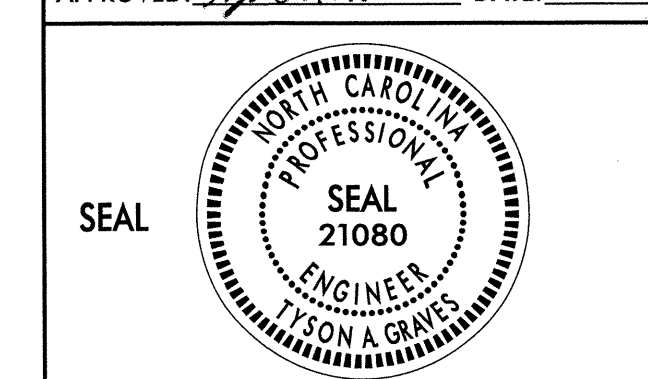
TEMPORARY PAVEMENT MARKING

SYMB	DESCRIPTION
PAINT (4")	
PA	WHITE EDGELINE
PC	10 FT. WHITE SKIP
PD	3 FT. - 9 FT./SP WHITE MINISKIP
PE	WHITE SOLID LANE LINE
PF	10 FT. YELLOW SKIP
PH	YELLOW SINGLE CENTER
PI	YELLOW DOUBLE CENTER

PAINT MARKING SYMBOLS

- QA LEFT TURN ARROW
- QB RIGHT TURN ARROW

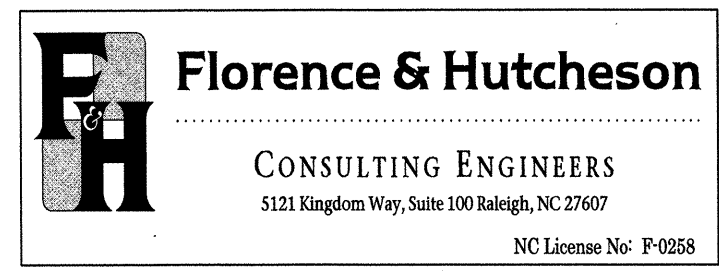
APPROVED: *[Signature]* DATE: 1-8-13



ROADWAY STANDARD DRAWINGS & LEGEND

0151DEL_P10b1

GENERAL NOTES



Florence & Hutcheson
CONSULTING ENGINEERS
5121 Kingdom Way, Suite 100 Raleigh, NC 27607
NC License No. P-0258



PROJ. REFERENCE NO. P-5206A	SHEET NO. TMP-2
---------------------------------------	---------------------------

CHANGES MAY BE REQUIRED WHEN PHYSICAL DIMENSIONS IN THE DETAIL DRAWINGS, STANDARD DETAILS, AND ROADWAY DETAILS ARE NOT ATTAINABLE TO MEET FIELD CONDITIONS OR RESULT IN DUPLICATE OR UNDESIRE OVERLAPPING OF DEVICES. MODIFICATION MAY INCLUDE: MOVING, SUPPLEMENTING, COVERING, OR REMOVAL OF DEVICES AS DIRECTED BY THE ENGINEER.

THE FOLLOWING GENERAL NOTES APPLY AT ALL TIMES FOR THE DURATION OF THE CONSTRUCTION PROJECT EXCEPT WHEN OTHERWISE NOTED IN THE PLAN OR DIRECTED BY THE ENGINEER.

TIME RESTRICTIONS

A) DO NOT CLOSE OR NARROW TRAVEL LANES DURING HOLIDAYS AND SPECIAL EVENTS AS FOLLOWS:

ROAD NAME

ALL ROADS

HOLIDAY

1. FOR ANY UNEXPECTED OCCURRENCE THAT CREATES UNUSUALLY HIGH TRAFFIC VOLUMES, AS DIRECTED BY THE ENGINEER.
2. FOR NEW YEAR'S, BETWEEN THE HOURS OF 4:00PM DECEMBER 31st TO 9:00AM JANUARY 2ND. IF NEW YEAR'S DAY IS ON A FRIDAY, SATURDAY, SUNDAY, OR MONDAY THEN UNTIL 9:00AM THE FOLLOWING TUESDAY.
3. FOR EASTER, BETWEEN THE HOURS OF 4:00PM THURSDAY AND 9:00AM MONDAY.
4. FOR MEMORIAL DAY, BETWEEN THE HOURS OF 4:00PM FRIDAY TO 9:00AM TUESDAY.
5. FOR INDEPENDENCE DAY, BETWEEN THE HOURS OF 4:00PM THE DAY BEFORE INDEPENDENCE DAY AND 9:00AM THE DAY AFTER INDEPENDENCE DAY.

IF INDEPENDENCE DAY IS ON A FRIDAY, SATURDAY, SUNDAY OR MONDAY THEN BETWEEN THE HOURS OF 4:00PM THE THURSDAY BEFORE INDEPENDENCE DAY AND 9:00AM THE TUESDAY AFTER INDEPENDENCE DAY.

6. FOR LABOR DAY, BETWEEN THE HOURS OF 4:00PM FRIDAY AND 9:00AM TUESDAY.
7. FOR THANKSGIVING DAY, BETWEEN THE HOURS OF 4:00 PM TUESDAY TO 9:00AM MONDAY.
8. FOR CHRISTMAS, BETWEEN THE HOURS OF 4:00PM THE FRIDAY BEFORE THE WEEK OF CHRISTMAS DAY AND 9:00AM THE FOLLOWING TUESDAY AFTER THE WEEK OF CHRISTMAS.

B) DO NOT STOP TRAFFIC AS FOLLOWS:

ROAD NAME	DAY AND TIME RESTRICTIONS	DURATION AND OPERATION
US 29	SUNDAY TO SATURDAY 6:00 A.M. TO MIDNIGHT	30 MINUTES GIRDER INSTALLATION

LANE AND SHOULDER CLOSURE REQUIREMENTS

- C) REMOVE LANE CLOSURE DEVICES FROM THE LANE WHEN WORK IS NOT BEING PERFORMED BEHIND THE LANE CLOSURE OR WHEN A LANE CLOSURE IS NO LONGER NEEDED OR AS DIRECTED BY THE ENGINEER.
- D) WHEN PERSONNEL AND/OR EQUIPMENT ARE WORKING WITHIN 15 FT OF AN OPEN TRAVEL LANE, CLOSE THE NEAREST OPEN SHOULDER USING ROADWAY STANDARD DRAWING NO. 1101.04 UNLESS THE WORK AREA IS PROTECTED BY BARRIER OR GUARDRAIL OR A LANE CLOSURE IS INSTALLED.

- E) WHEN PERSONNEL AND/OR EQUIPMENT ARE WORKING ON THE SHOULDER ADJACENT TO AN UNDIVIDED FACILITY AND WITHIN 5 FT OF AN OPEN TRAVEL LANE, CLOSE THE NEAREST OPEN LANE USING ROADWAY STANDARD DRAWING NO. 1101.02 UNLESS THE WORK AREA IS PROTECTED BY BARRIER OR GUARDRAIL.
- F) WHEN PERSONNEL AND/OR EQUIPMENT ARE WORKING WITHIN A LANE OF TRAVEL OF AN UNDIVIDED OR DIVIDED FACILITY, CLOSE THE LANE ACCORDING TO THE TRAFFIC CONTROL PLANS, ROADWAY STANDARD DRAWINGS, OR AS DIRECTED BY THE ENGINEER. CONDUCT THE WORK SO THAT ALL PERSONNEL AND/OR EQUIPMENT REMAIN WITHIN THE CLOSED TRAVEL LANE.

PAVEMENT EDGE DROP OFF REQUIREMENTS

- G) BACKFILL AT A 6:1 SLOPE UP TO THE EDGE AND ELEVATION OF EXISTING PAVEMENT IN AREAS ADJACENT TO AN OPENED TRAVEL LANE THAT HAS AN EDGE OF PAVEMENT DROP-OFF AS FOLLOWS:
- BACKFILL DROP-OFFS THAT EXCEED 2 INCHES ON ROADWAYS WITH POSTED SPEED LIMITS OF 45 MPH OR GREATER.
- BACKFILL DROP-OFFS THAT EXCEED 3 INCHES ON ROADWAYS WITH POSTED SPEED LIMITS LESS THAN 45 MPH.
- BACKFILL WITH SUITABLE COMPACTED MATERIAL, AS APPROVED BY THE ENGINEER, AT NO EXPENSE TO THE DEPARTMENT.
- H) DO NOT EXCEED A DIFFERENCE OF 2 INCHES IN ELEVATION BETWEEN OPEN LANES OF TRAFFIC FOR NOMINAL LIFTS OF 1.5 INCHES. INSTALL ADVANCE WARNING "UNEVEN LANES" SIGNS (W8-11) IN ADVANCE AND A MINIMUM OF EVERY HALF MILE THROUGHOUT THE UNEVEN AREA.

TRAFFIC PATTERN ALTERATIONS

- I) NOTIFY THE ENGINEER TWENTY-ONE (21) CALENDAR DAYS PRIOR TO ANY ROAD CLOSURES OR TRAFFIC PATTERN ALTERATION.

SIGNING

- J) INSTALL ADVANCE WORK ZONE WARNING SIGNS WHEN WORK IS WITHIN 40 FT FROM THE EDGE OF TRAVEL LANE AND NO MORE THAN THREE (3) DAYS PRIOR TO THE BEGINNING OF CONSTRUCTION.
- K) PROVIDE SIGNING AND DEVICES REQUIRED TO CLOSE THE ROAD ACCORDING TO THE ROADWAY STANDARD DRAWINGS AND TRAFFIC CONTROL PLANS.
- PROVIDE THE SIGNING REQUIRED FOR THE OFF-SITE DETOUR ROUTE AS SHOWN IN THE TRAFFIC CONTROL PLANS.
- L) COVER OR REMOVE ALL SIGNS AND DEVICES REQUIRED TO CLOSE THE ROAD WHEN CLOSURE IS NOT IN OPERATION.
- COVER OR REMOVE ALL THE SIGNS REQUIRED FOR THE OFF-SITE DETOUR WHEN THE DETOUR IS NOT IN OPERATION.
- M) ENSURE ALL NECESSARY SIGNING IS IN PLACE PRIOR TO ALTERING ANY TRAFFIC PATTERN.

TRAFFIC BARRIER

- N) INSTALL TEMPORARY BARRIER ACCORDING TO THE TRAFFIC CONTROL PLANS A MAXIMUM OF TWO (2) WEEKS PRIOR TO BEGINNING WORK IN ANY LOCATION. ONCE TEMPORARY BARRIER IS INSTALLED AT ANY LOCATION PROCEED IN A CONTINUOUS MANNER TO COMPLETE THE PROPOSED WORK IN THAT LOCATION UNLESS OTHERWISE STATED IN THE TRAFFIC CONTROL PLANS OR AS DIRECTED BY THE ENGINEER.
- DO NOT PLACE BARRIER DIRECTLY ON ANY SURFACE OTHER THAN ASPHALT OR CONCRETE.

ONCE TEMPORARY BARRIER IS INSTALLED AT ANY LOCATION AND NO WORK IS PERFORMED BEHIND THE TEMPORARY BARRIER FOR A PERIOD LONGER THAN TWO (2) MONTHS, REMOVE/RESET TEMPORARY BARRIER AT NO COST TO THE DEPARTMENT UNLESS OTHERWISE STATED IN THE TRAFFIC CONTROL PLANS, TEMPORARY BARRIER IS PROTECTING A HAZARD, OR AS DIRECTED BY THE ENGINEER.

INSTALL TEMPORARY BARRIER WITH THE TRAFFIC FLOW BEGINNING WITH THE UPSTREAM SIDE OF TRAFFIC. REMOVE TEMPORARY BARRIER AGAINST THE TRAFFIC FLOW BEGINNING WITH THE DOWNSTREAM SIDE OF TRAFFIC.

INSTALL AND SPACE DRUMS NO GREATER THAN TWICE THE POSTED SPEED LIMIT (MPH) TO CLOSE OR KEEP THE SECTION OF THE ROADWAY CLOSED UNTIL THE TEMPORARY BARRIER CAN BE PLACED OR AFTER THE TEMPORARY BARRIER IS REMOVED.

- O) PROTECT THE APPROACH END OF MOVABLE/PORTABLE CONCRETE BARRIER AT ALL TIMES DURING THE INSTALLATION AND REMOVAL OF THE BARRIER BY EITHER A TRUCK MOUNTED IMPACT ATTENUATOR (MAXIMUM 72 HOURS) OR A TEMPORARY CRASH CUSHION.

PROTECT THE APPROACH END OF MOVABLE/PORTABLE CONCRETE BARRIER FROM ONCOMING TRAFFIC AT ALL TIMES BY A TEMPORARY CRASH CUSHION UNLESS THE APPROACH END OF MOVABLE/PORTABLE CONCRETE BARRIER IS OFFSET FROM ONCOMING TRAFFIC AS FOLLOWS OR AS SHOWN IN THE PLANS:

POSTED SPEED LIMIT	MINIMUM OFFSET
40 OR LESS	15 FT
45 - 50	20 FT
55	25 FT
60 MPH or HIGHER	30 FT

TRAFFIC CONTROL DEVICES

- P) SPACE CHANNELIZING DEVICES IN WORK AREAS NO GREATER IN FEET THAN TWICE THE POSTED SPEED LIMIT (MPH), EXCEPT 10 FT ON-CENTER IN RADII, AND 3 FT OFF THE EDGE OF AN OPEN TRAVELWAY WHEN LANE CLOSURES ARE NOT IN EFFECT. WHEN SKINNY DRUMS ARE ALLOWED REFER TO SECTION 1180 OF STANDARD SPECIFICATIONS FOR ROADS AND STRUCTURES OR AS SHOWN IN THE PLANS.

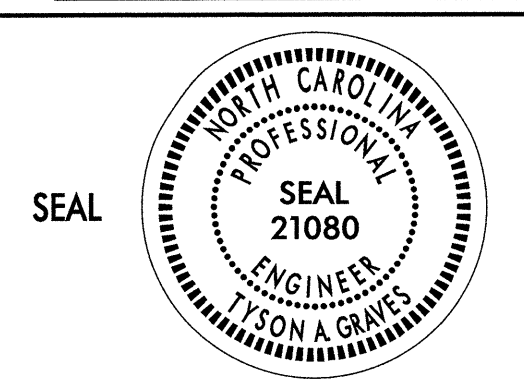
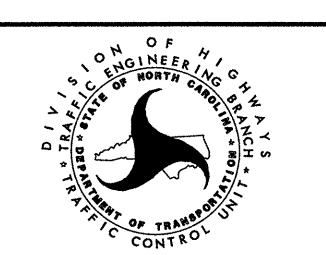
- Q) PLACE TYPE III BARRICADES, WITH "ROAD CLOSED" SIGN R11-2 ATTACHED, OF SUFFICIENT LENGTH TO CLOSE ENTIRE ROADWAY.

PAVEMENT MARKINGS AND MARKERS

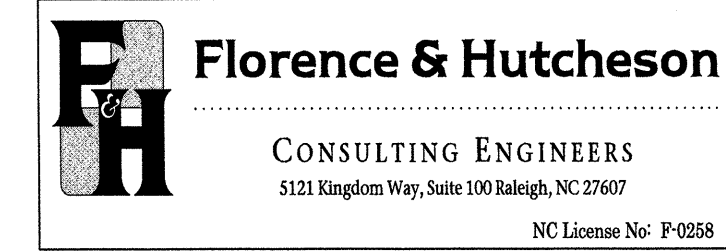
- R) INSTALL PAVEMENT MARKINGS AND PAVEMENT MARKERS ON THE FINAL SURFACE AS SHOWN IN THE PAVEMENT MARKING PLAN.
- S) INSTALL TEMPORARY PAVEMENT MARKINGS AND TEMPORARY PAVEMENT MARKERS ON INTERIM LAYERS OF PAVEMENT AS FOLLOWS:

ROAD NAME	MARKING	MARKER
ALL ROADS	PAINT	TEMPORARY RAISED

- T) PLACE AT LEAST TWO APPLICATIONS OF PAINT FOR TEMPORARY TRAFFIC PATTERNS THAT WILL REMAIN IN PLACE OVER THREE (3) MONTHS. PLACE ADDITIONAL APPLICATIONS OF PAINT UPON SUFFICIENT DRYING TIME, AS DETERMINED BY THE ENGINEER.
- U) TIE PROPOSED PAVEMENT MARKING LINES TO EXISTING PAVEMENT MARKING LINES.
- V) REMOVE/REPLACE ANY CONFLICTING/DAMAGED PAVEMENT MARKINGS AND MARKERS BY THE END OF EACH DAY'S OPERATION.
- W) TRACE THE MONOLITHIC ISLAND LOCATIONS WITH PROPER COLOR PAVEMENT MARKINGS PRIOR TO PLACEMENT.

APPROVED: <i>[Signature]</i>	DATE: 1-8-13	GENERAL NOTES		
	SCALE: NONE			
	DATE: DEC-12			REVISIONS
	DWG. BY: TAG			
	DESIGN BY: TAG			
	REVIEWED BY: MTR			

PHASING



PROJ. REFERENCE NO. P-5206A	SHEET NO. TMP-3
---------------------------------------	---------------------------

PHASE I

STEP 1
USING ROADWAY STANDARD DRAWING NUMBER 1101.01, INSTALL ADVANCE WARNING SIGNS ON *L- AND ALL *Y- LINES.

STEP 2
USING ROADWAY STANDARD DRAWING 1101.02 (SHEET 1 OF 15) AS NECESSARY, BEGIN CONSTRUCTION OF THE FOLLOWING AWAY FROM TRAFFIC UP TO BUT NOT INCLUDING THE FINAL LAYER OF SURFACE COURSE (SEE SHEET TMP-4):

- Y2- STA. 16+50+/- TO -Y2- STA. 44+00+/- (INCLUDES PART OF BRIDGE)
- Y3- STA. 10+00+/- TO -Y3- STA. 13+50+/-
- Y21- STA. 20+20+/- TO -Y21- STA. 30+15+/-
- Y20- STA. 33+50+/- TO -Y20- STA. 60+25+/-
- Y23- STA. 10+20+/- TO -Y23- STA. 17+50+/-
- Y23- STA. 23+00+/- TO -Y23- STA. 28+50+/-

STEP 3
USING ROADWAY STANDARD DRAWING 1101.02 (SHEETS 1 & 2 OF 15), REVISE PAVEMENT MARKINGS ON -YB- AND INSTALL PORTABLE CONCRETE BARRIER (PCB) AS SHOWN ON SHEET TMP-5.

STEP 4
USING ROADWAY STANDARD DRAWING 1101.03 (SHEET 2 OF 9) AND DETOUR ROUTE SHOWN ON SHEET TMP-6, CLOSE -Y2- BETWEEN -Y23- AND -YB-. BEGIN CONSTRUCTION -Y2- FROM -Y2- STA. 44+00+/- AND -Y2- STA. 50+80+/-, INCLUDING BRIDGE, UP TO BUT NOT INCLUDING THE FINAL LAYER OF SURFACE COURSE. (SEE TMP-4)

STEP 5
USING ROADWAY STANDARD DRAWING 1101.02 (SHEET 1 OF 15), BEGIN CONSTRUCTION OF RIGHT TURN LANE UP TO THE EDGE AND ELEVATION OF EXISTING PAVEMENT ON -YB- FROM -YB- STA. 11+00+/- TO -YB- STA. 16+50+/- (SEE TMP-4)

STEP 6
USING ROADWAY STANDARD DRAWING 1101.03 (SHEET 1 OF 9) TO ALLOW LOCAL TRAFFIC ONLY, BEGIN CONSTRUCTION OF -Y21- STA. 10+00+/- TO -Y21- STA. 20+20+/- UP TO BUT NOT INCLUDING THE FINAL LAYER OF SURFACE COURSE. (SEE TMP-4)

PHASE II

PERFORM THE WORK IN STEP 1 IN 14 CALENDAR DAYS. (SEE INTERMEDIATE CONTRACT TIMES AND LIQUIDATED DAMAGES)

NOTE: COORDINATE CLOSURE OF -Y23- IN STEP 1 WITH THE LIBERTY COMMONS NURSING CENTER TO ENSURE EMERGENCY ACCESS IS MAINTAINED.

STEP 1
WHILE -Y2- DETOUR TRAFFIC REMAINS IN THE TRAFFIC PATTERN FROM PHASE I STEP 4, USING ROADWAY STANDARD DRAWING 1102.03 (SHEETS 1 & 2 OF 9), CLOSE SOUTHWARK DR AND LONGMEADOW DR, AND CONSTRUCT THE FOLLOWING UP TO BUT NOT INCLUDING THE FINAL LAYER OF SURFACE COURSE (SEE TMP-7):

- Y23- FROM -Y23- STA. 17+50+/- TO -Y23- STA. 23+00+/-
- Y23A- FROM -Y23A- STA. 11+25+/- TO -Y23A- STA. 13+55+/-

PERFORM THE WORK IN STEP 2 IN 14 CALENDAR DAYS. (SEE INTERMEDIATE CONTRACT TIMES AND LIQUIDATED DAMAGES)

STEP 2
MOVE CLOSURE OF -Y2- TO STA. 56+00+/- . CONSTRUCT -Y2- FROM -Y2- STA. 50+80+/- TO -Y2- STA. 55+80+/- UP TO BUT NOT INCLUDING THE FINAL LAYER OF SURFACE COURSE (SEE TMP-7).

STEP 3
COMPLETE CONSTRUCTION ON -Y23- BEGUN IN PHASE 1, STEP 2 FROM -Y23- STA. 10+20+/- TO STA. 17+50+/-, AND CONSTRUCTION ON -YB- BEGUN IN PHASE I, STEP 5. MOVE -Y2- CLOSURE POINT BACK TO -Y2- STA. 50+80+/- (SEE TMP-8)

STEP 4
CLOSE LONGMEADOW DRIVE USING ROADWAY STANDARD DRAWING 1102.03 (SHEETS 1 & 2 OF 9) TO ALLOW LOCAL TRAFFIC ONLY, AND OPEN -Y23- AND -Y23A- TO THE TRAFFIC PATTERN SHOWN ON SHEET TMP-9 AND TMP-10.

STEP 5
AWAY FROM TRAFFIC CONSTRUCT, -Y23- FROM STA. 28+50+/- TO -Y23- STA. 32+00+/- UP TO BUT NOT INCLUDING THE FINAL LAYER OF SURFACE COURSE. KEEPING LONGMEADOW DR TRAFFIC CLOSED TO THRU TRAFFIC, MOVE CLOSURE TO -Y23- STA. 32+00+/- . (SEE SHEET TMP-10)

PHASE III

STEP 1
USING ROADWAY STANDARD DRAWING 1101.02 (SHEETS 3 & 7 OF 15) AS NECESSARY, BEGIN CONSTRUCTION OF -YB- UP TO BUT NOT INCLUDING THE FINAL LAYER OF SURFACE COURSE FROM -YB- STA. 11+00+/- TO STA. 31+25+/-, AND CONSTRUCT -Y23- FROM -Y23- STA. 32+00+/- TO -Y23- STA. 34+61+/- UP TO BUT NOT INCLUDING THE FINAL LAYER OF SURFACE COURSE. (SEE SHEET TMP-11)

STEP 2
COMPLETE CONSTRUCTION BEGUN IN PHASE I, STEPS 2, 4 AND 6 OF THOSE ITEMS NOT ALREADY COMPLETED, AND COMPLETE CONSTRUCTION BEGUN IN PHASE III, STEP 1.

PHASE IV

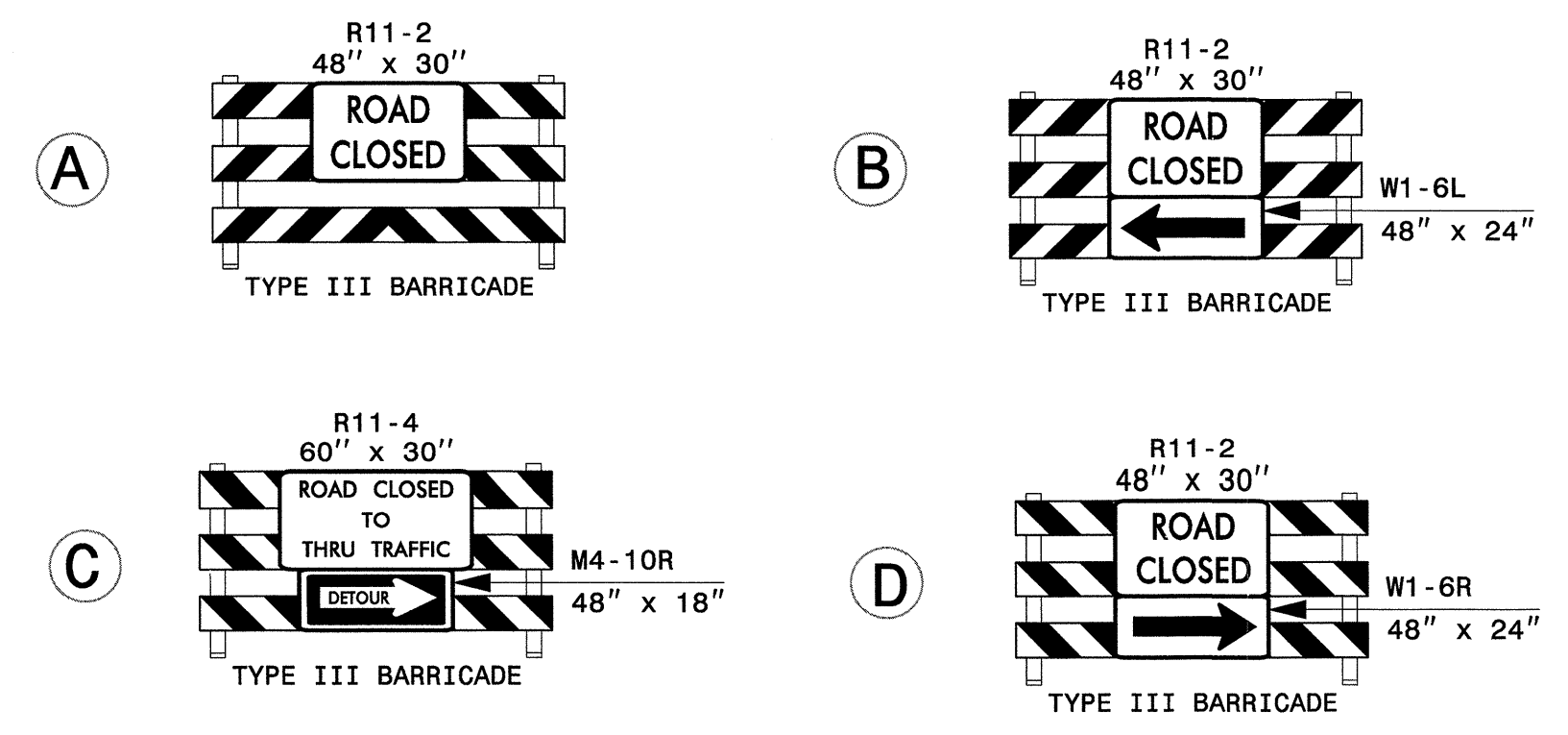
STEP 1
USING ROADWAY STANDARD DRAWING 1101.02 (SHEET 1 OF 15) TO CONSTRUCT THE TIE-INS OF -Y2- AND -Y3- UP TO BUT NOT INCLUDING THE FINAL LAYER OF SURFACE COURSE AS FOLLOWS (SEE SHEET TMP-12):

- Y2- STA. 11+50+/- TO -Y2- STA. 16+50+/-
- Y3- STA. 13+50+/- TO -Y3- STA. 17+00+/-

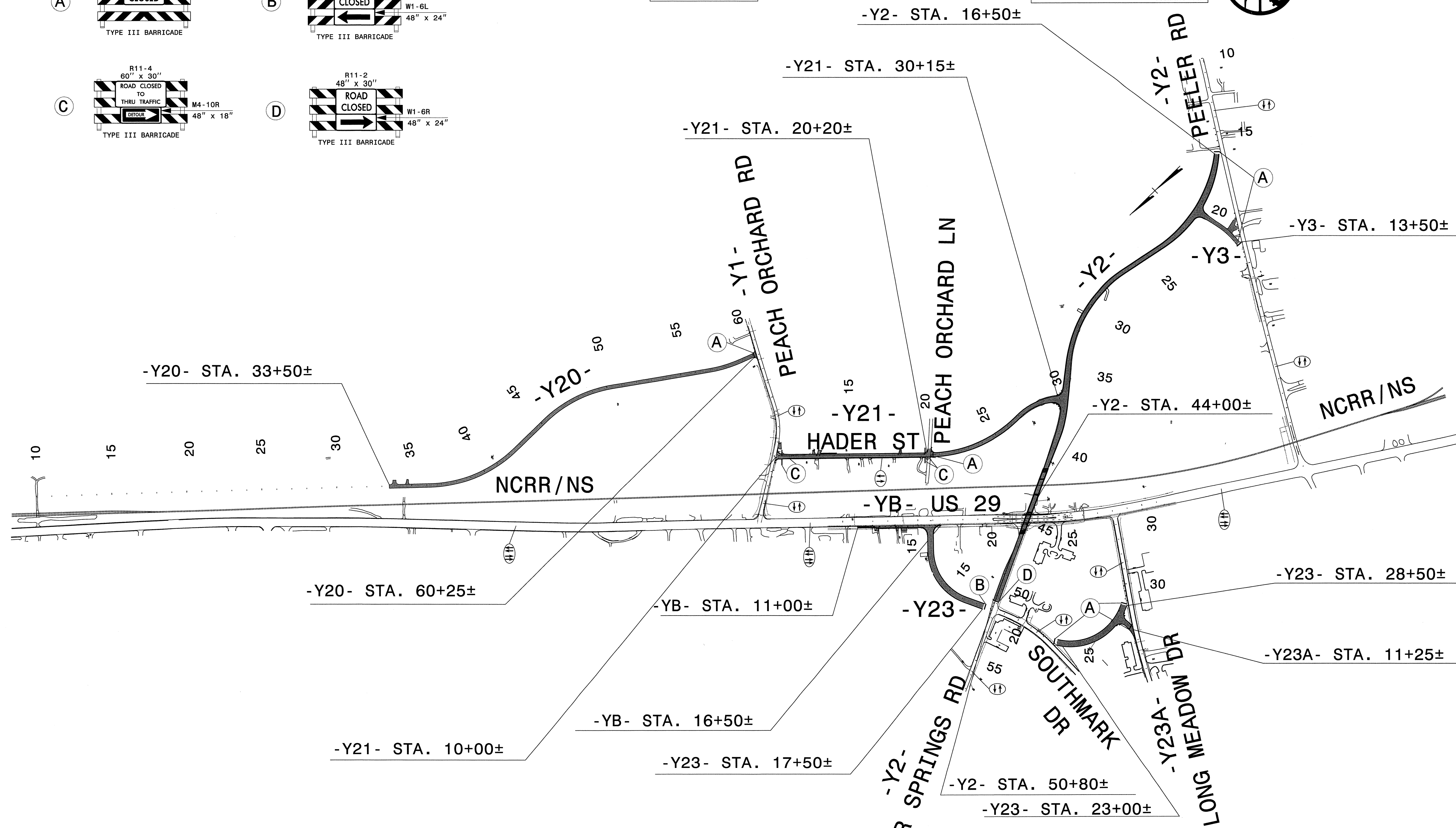
STEP 2
USING ROADWAY STANDARD DRAWING 1101.02 (SHEETS 3 & 7 OF 15) AS NEEDED, PAVE THE FINAL LAYER OF SURFACE COURSE, AND INSTALL THE FINAL MARKINGS ON ALL *Y- LINES AS SHOWN IN THE FINAL PAVEMENT MARKING PLANS.

STEP 3
CLOSE EXISTING AT GRADE RAILROAD CROSSINGS ON THE PROJECT, REMOVE TEMPORARY TRAFFIC CONTROL DEVICES, AND OPEN ALL ROADS TO FINAL TRAFFIC PATTERN. (SEE SHEET TMP-12)

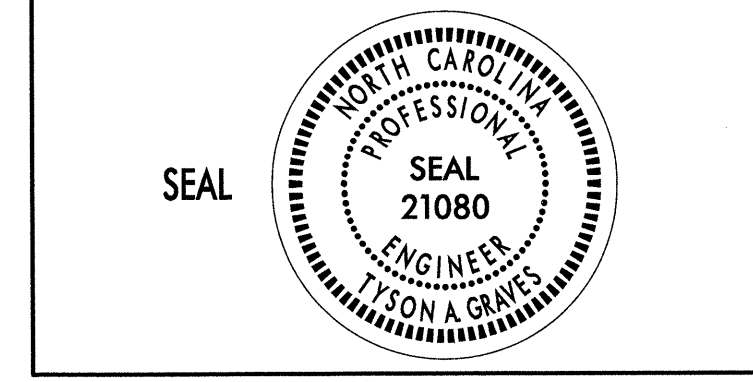
APPROVED: <i>[Signature]</i>	DATE: 1-22-13	PHASING	
SEAL 	SCALE: NONE		REVISIONS
	DATE: DEC-12		
	DWG. BY: TAG		
	DESIGN BY: TAG		
	REVIEWED BY: MTR		



PHASE I



APPROVED: *[Signature]* DATE: 1-8-13



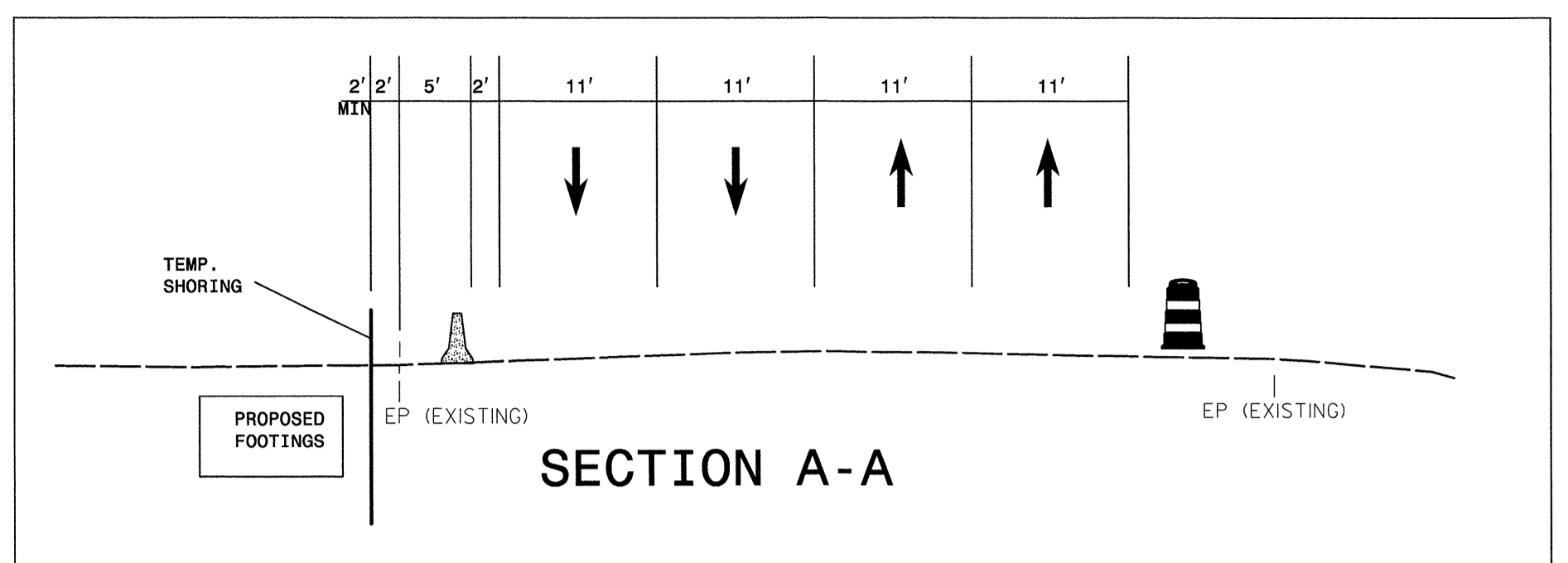
PHASE I	
SCALE: NONE	REVISIONS
DATE: DEC-12	
DWG. BY: TAG	
DESIGN BY: TAG	
REVIEWED BY: MTR	

0151DEL_P10b1

Florence & Hutcherson
 CONSULTING ENGINEERS
 5121 Kingdom Way, Suite 100 Raleigh, NC 27607
 NC License No: P-0258



PROJ. REFERENCE NO. P-5206A	SHEET NO. TMP-5
--------------------------------	--------------------



-YB- STA. 22+10±
 BEGIN TEMP. SHORING

-YB- STA. 22+00±
 BEGIN PCB

-YB- STA. 20+00±
 TIE TO EXISTING

-YB- STA. 22+75±
 END TEMP. SHORING

US 29 -YB-

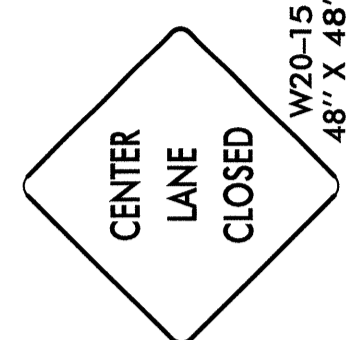
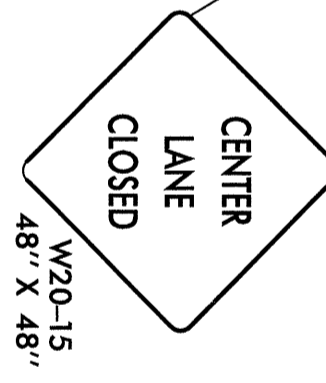
-YB- STA. 25+31±
 TIE TO EXISTING

-YB- STA. 23+50±
 END PCB

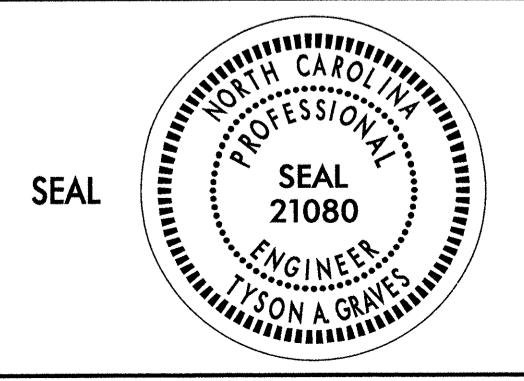
TEMPORARY SHORING

TOTAL UNIT WEIGHT: 120 pcf
 BOUYANT UNIT WEIGHT: 58 pcf
 FRICTION ANGLE: 20 degrees
 COHESION, c: 250 psf

NOTE: AT THE CONTRACTOR'S OPTION, USE STANDARD TEMPORARY SHORING FROM -YB- STA. 22+08± TO STA. 22+83± SEE STANDARD DRAWING NUMBER 1801.01 FOR TEMPORARY SHORING.



APPROVED: *[Signature]* DATE: 1-5-13



-YB- TEMP. MARKINGS

SCALE: NONE		REVISIONS _____ _____ _____ _____ _____
DATE: DEC-12		
DWG. BY: TAG		
DESIGN BY: TAG		
REVIEWED BY: MTR		

I:\8_2013\1\1\IP\5206A\5206A\TrafficControl\TCP\5206a.tmp.p1.dtl.dgn
 Florence & Hutcherson



0151DEL_P10b1

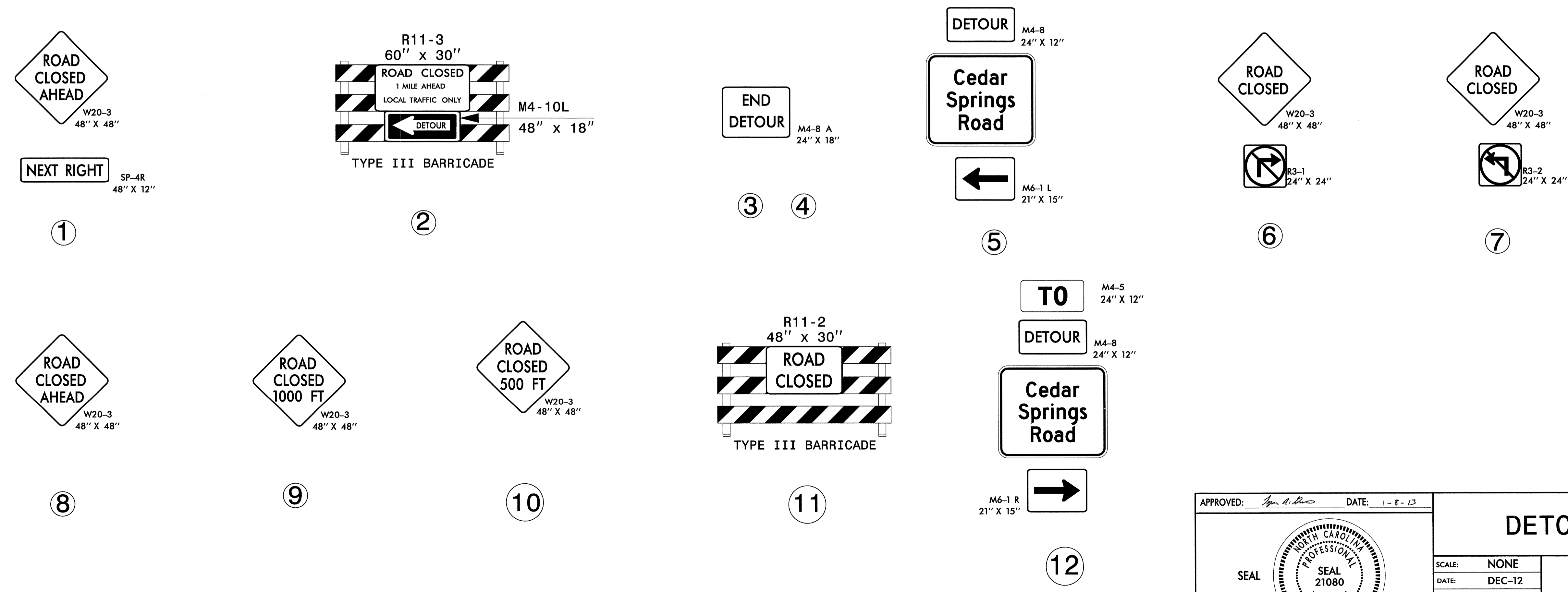
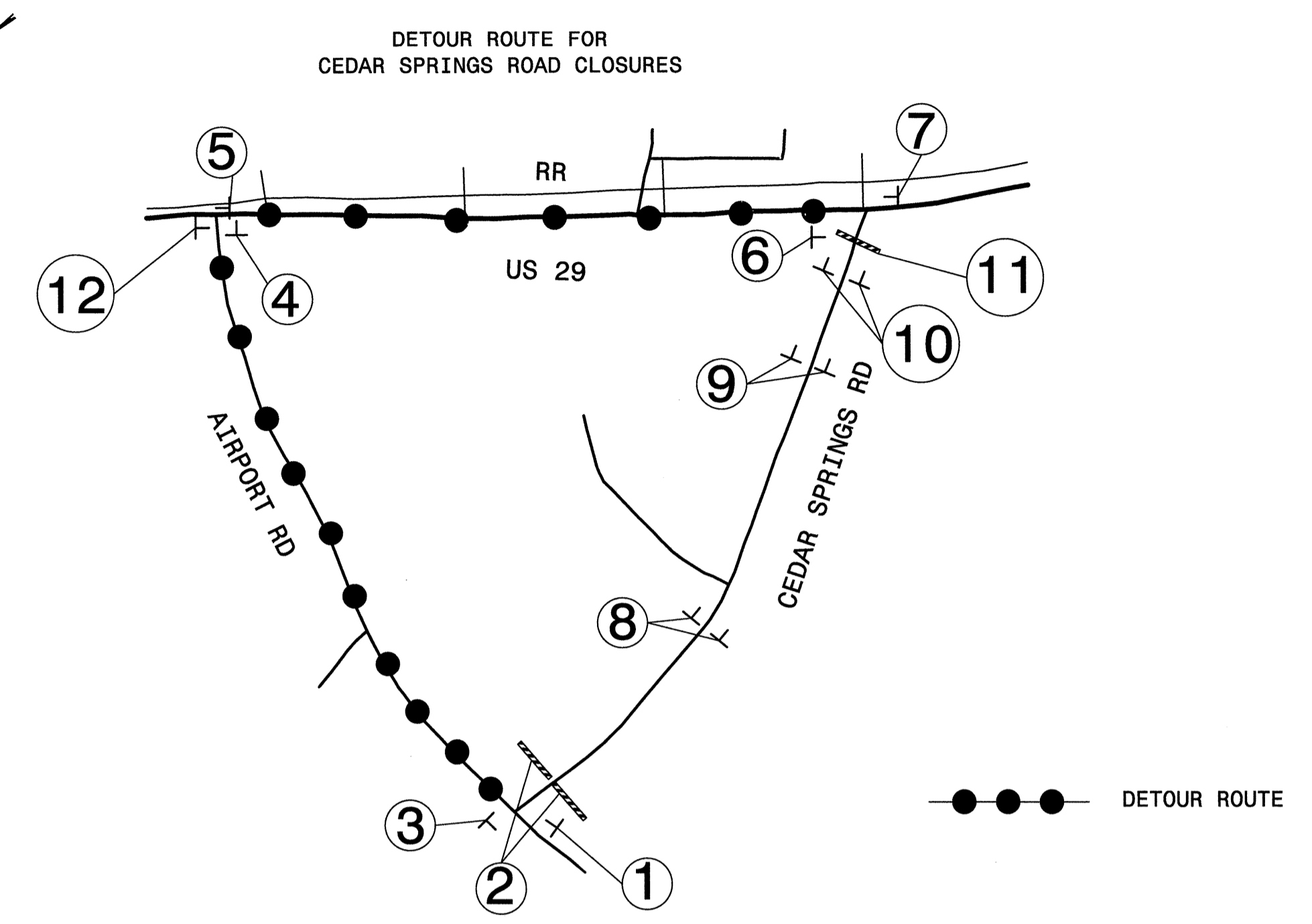
SIGN NUMBER: name	BACKG COLOR: Fluorescent Orange	DESIGN BY: TAG	CHECKED BY:	DATE: Nov 07, 2012
TYPE: STATIONARY	COPY COLOR: Black	PROJECT ID: P-5206A	DIV: DIV 9	
QUANTITY: SEE PLANS				
SIGN WIDTH: 3'-6"				
HEIGHT: 3'-0"				
TOTAL AREA: 10.5 Sq.Ft.				
BORDER TYPE: INSET				
RECESS: 0.75"				
WIDTH: 0.75"				
RADII: 3"				
NO. Z BARS:	MAT'L: 0.080" (2.0 mm) ALUMINUM			
LENGTH:				

BORDER
R=3"
TH=0.75"
IN=0.75"

Spacing Factor is 1 unless specified otherwise

LETTER POSITIONS												Series/Size
Letter spacings are to start of next letter												Text Length
C	e	d	a	r								D 2000
10.7	5	4.1	4.5	4.6	2.3	10.7						20.5
S	p	r	i	n	g	s						D 2000
7.8	5	4.6	3	2.2	4.4	4.4	2.8	7.8				26.4
R	o	a	d									D 2000
12.5	4.7	4.3	4.3	3.6	12.5							17

FILENAME: SIGN_DESIGNS NORTH CAROLINA D.O.T. SIGN DETAIL



APPROVED: <i>[Signature]</i>	DATE: 1-8-13	DETOUR ROUTE							
	SCALE: NONE								
	DATE: DEC-12								
	DWG. BY: TAG								
	DESIGN BY: TAG								
REVIEWED BY: MTR		<table border="1" style="width: 100%; border-collapse: collapse;"> <thead> <tr> <th colspan="2">REVISIONS</th> </tr> </thead> <tbody> <tr> <td style="width: 50%;"> </td> <td style="width: 50%;"> </td> </tr> <tr> <td> </td> <td> </td> </tr> </tbody> </table>		REVISIONS					
REVISIONS									

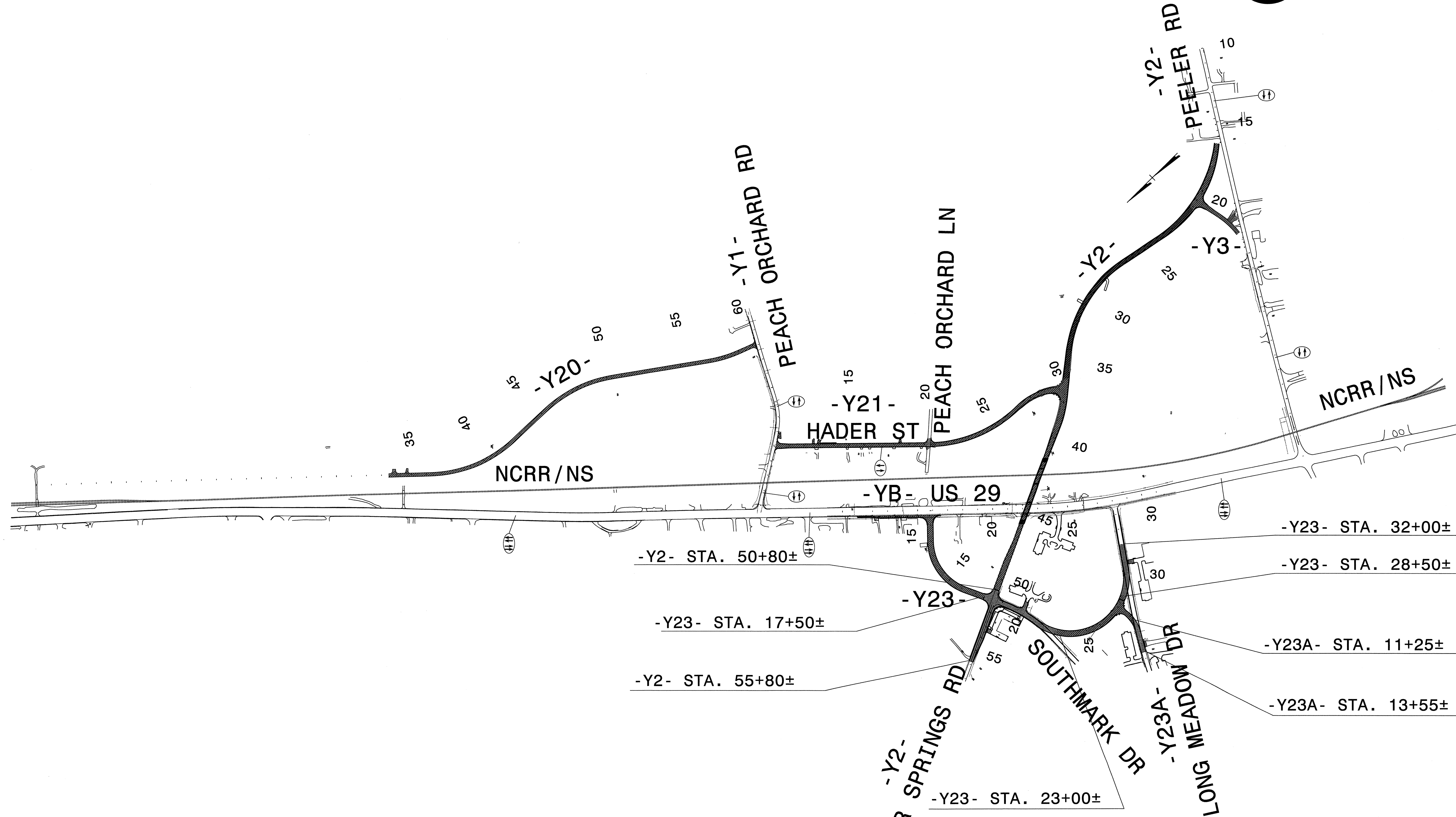
I:\8\2013\18\11\5206A\TrafficControl\TCP\5206a-tmp.pl-detour.dgn Florence & Hutcheson

PHASE II

Florence & Hutcheson
 CONSULTING ENGINEERS
 5121 Kingdom Way, Suite 100 Raleigh, NC 27607
 NC License No: P-0258



PROJ. REFERENCE NO.	SHEET NO.
P-5206A	TMP-7



NOTE: STEP 1 WILL REQUIRE AN INTERMEDIATE CONTRACT TIME

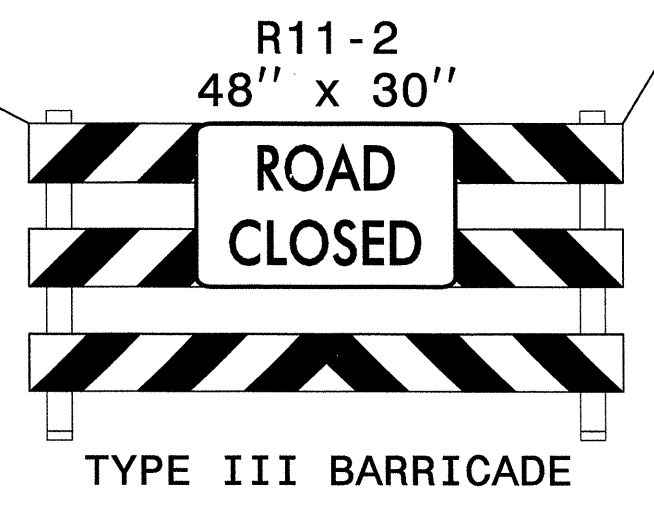
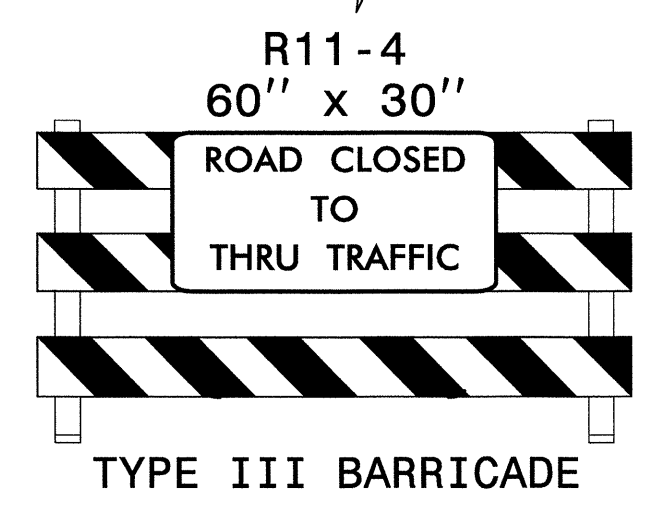
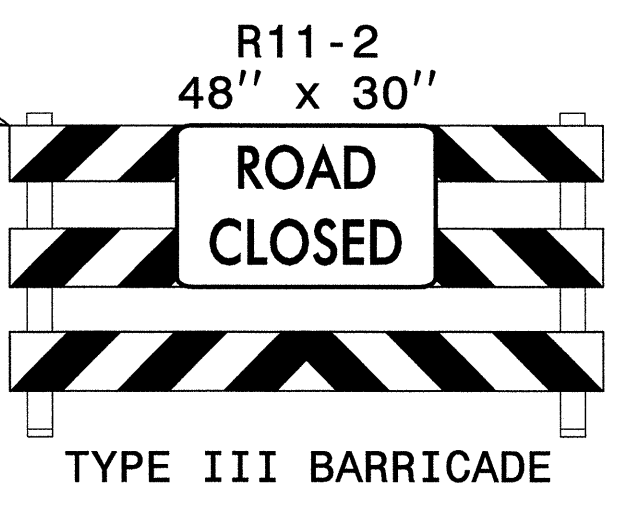
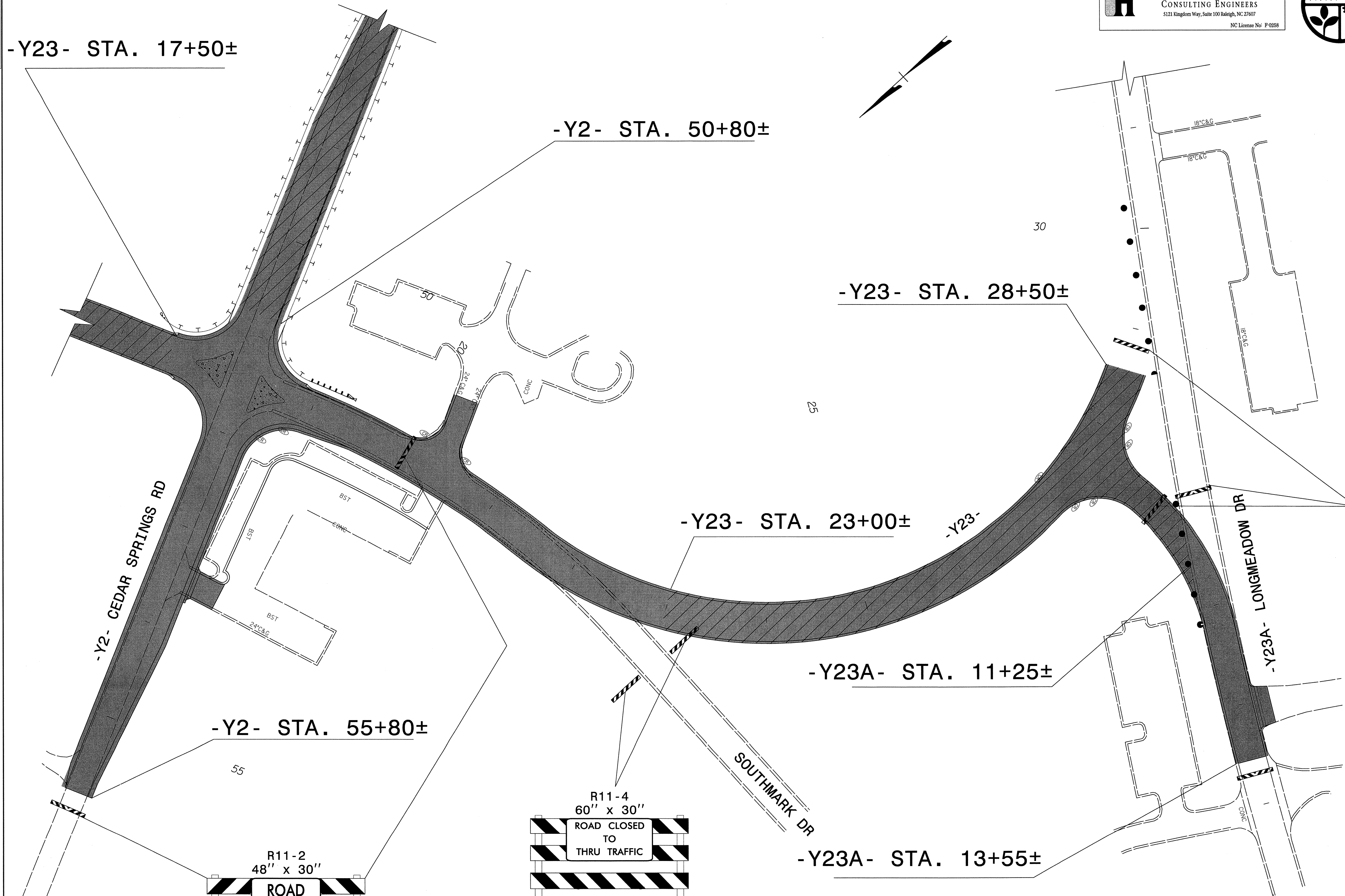
APPROVED: <i>[Signature]</i>	DATE: 1-5-13	PHASE II	
SEAL 	SCALE: NONE		REVISIONS
	DATE: DEC-12		
	DWG. BY: TAG		
	DESIGN BY: TAG		
REVIEWED BY: MTR			

0151DEL_P10b1

Florence & Hutcheson
 CONSULTING ENGINEERS
 5121 Kingdom Way, Suite 100 Raleigh, NC 27607
 NC License No. P-0258



PROJ. REFERENCE NO.	SHEET NO.
P-5206A	TMP-8

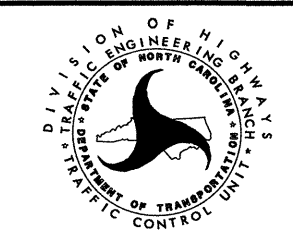


APPROVED: *[Signature]* DATE: 1-8-13

SEAL

-Y23- CONSTRUCTION

SCALE: NONE
 DATE: DEC-12
 DWG. BY: TAG
 DESIGN BY: TAG
 REVIEWED BY: MTR



REVISIONS	

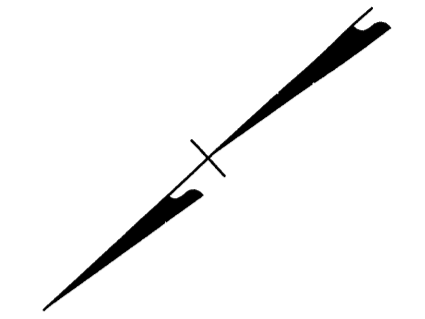
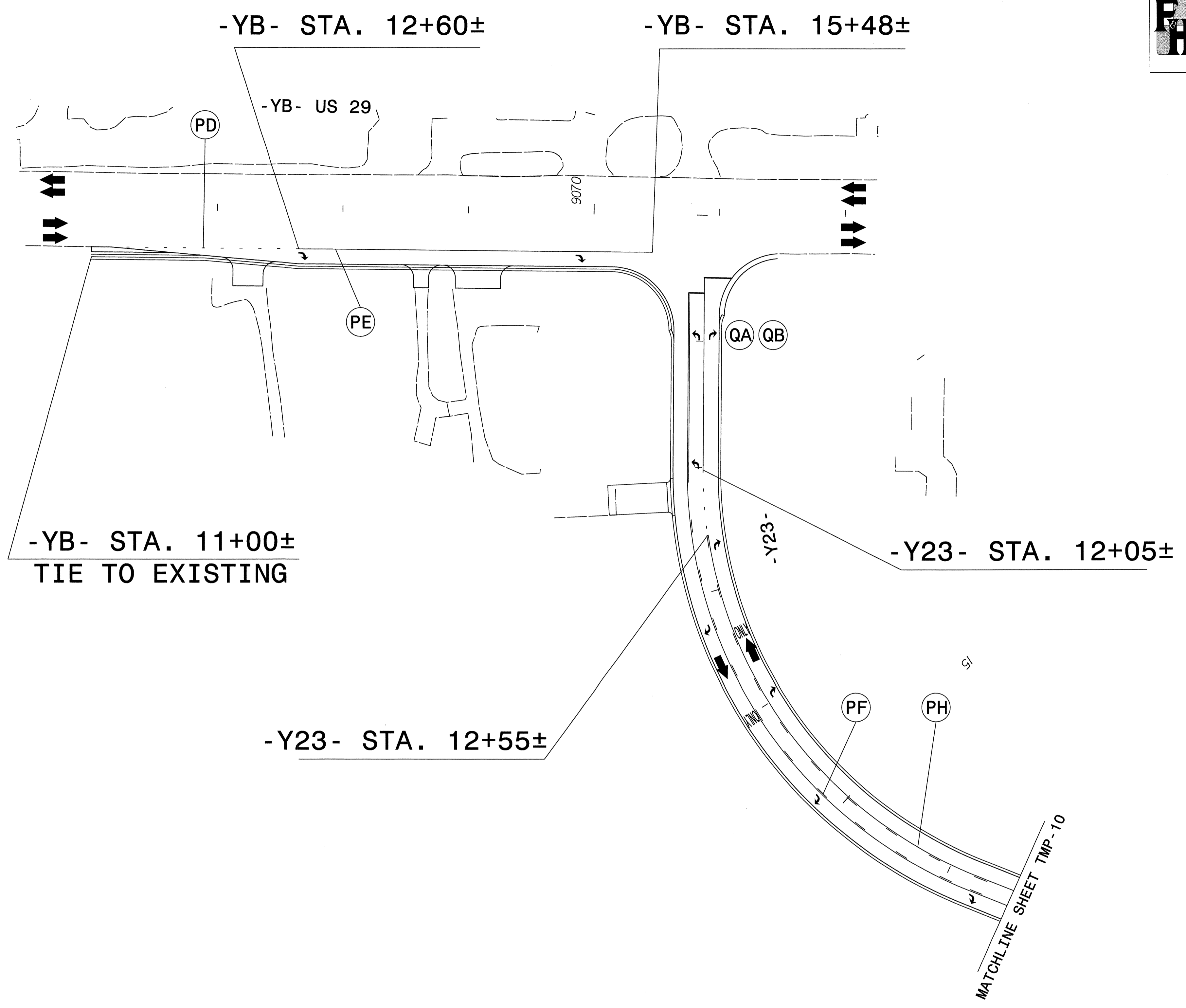
I:\8\293\1\8\293\5206A\TrafficControl\TOP\p5206a_tmp_pii.dtl.dgn
 Florence & Hutcheson

0151DEL_P10b1

FH Florence & Hutcheson
 CONSULTING ENGINEERS
 5121 Kingdom Way, Suite 100 Raleigh, NC 27607
 NC License No. P-0258

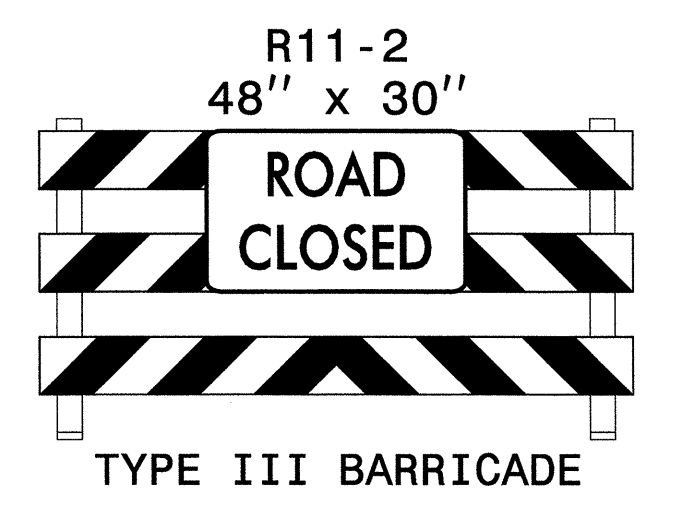
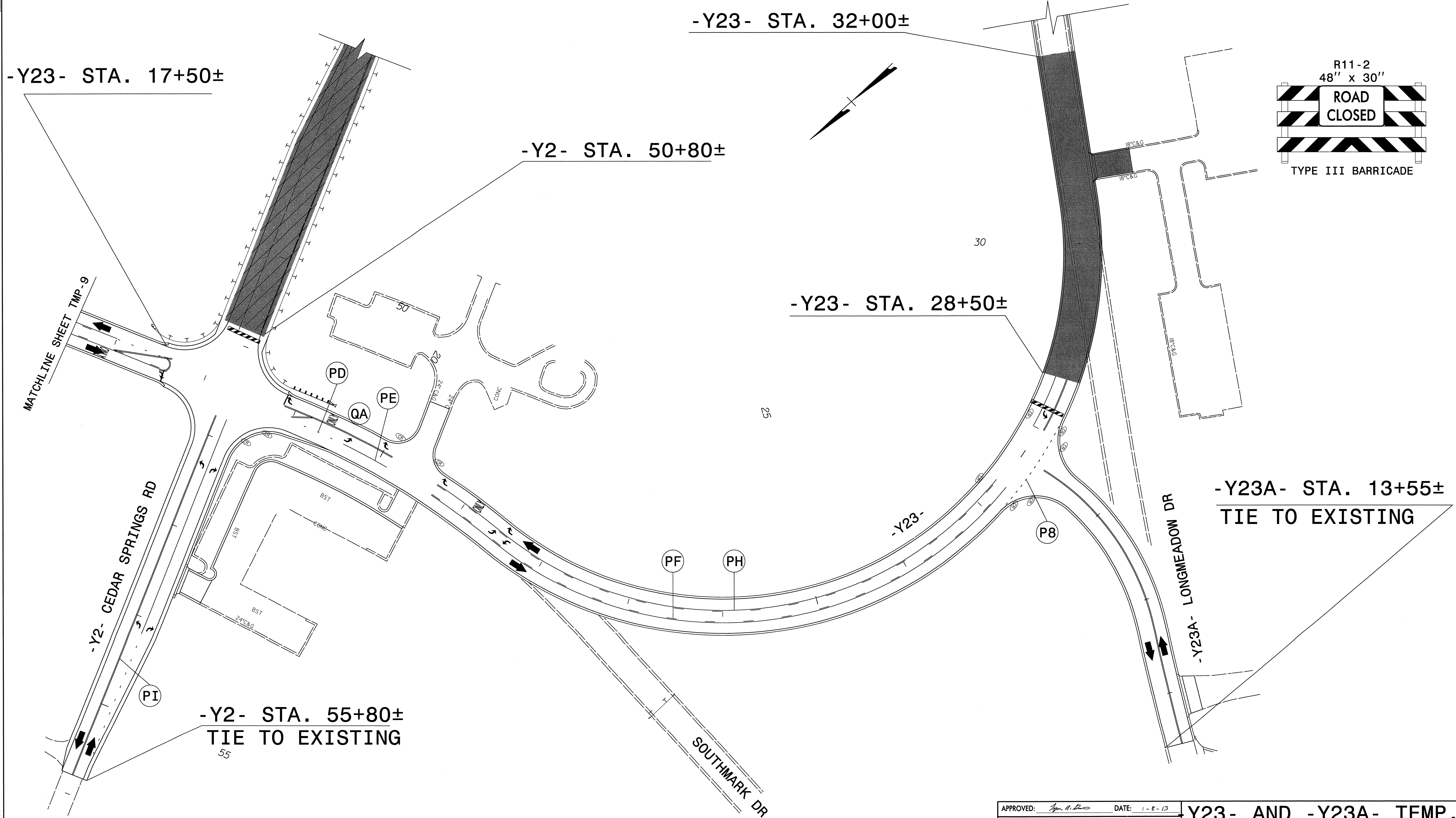


PROJ. REFERENCE NO.	SHEET NO.
P-5206A	TMP-9



1/8/2013
 P:\11\5206A\5206A\Traffic\TrafficControl\TCP\5206a-tmp-pli-dt12.dgn
 Florence & Hutcheson

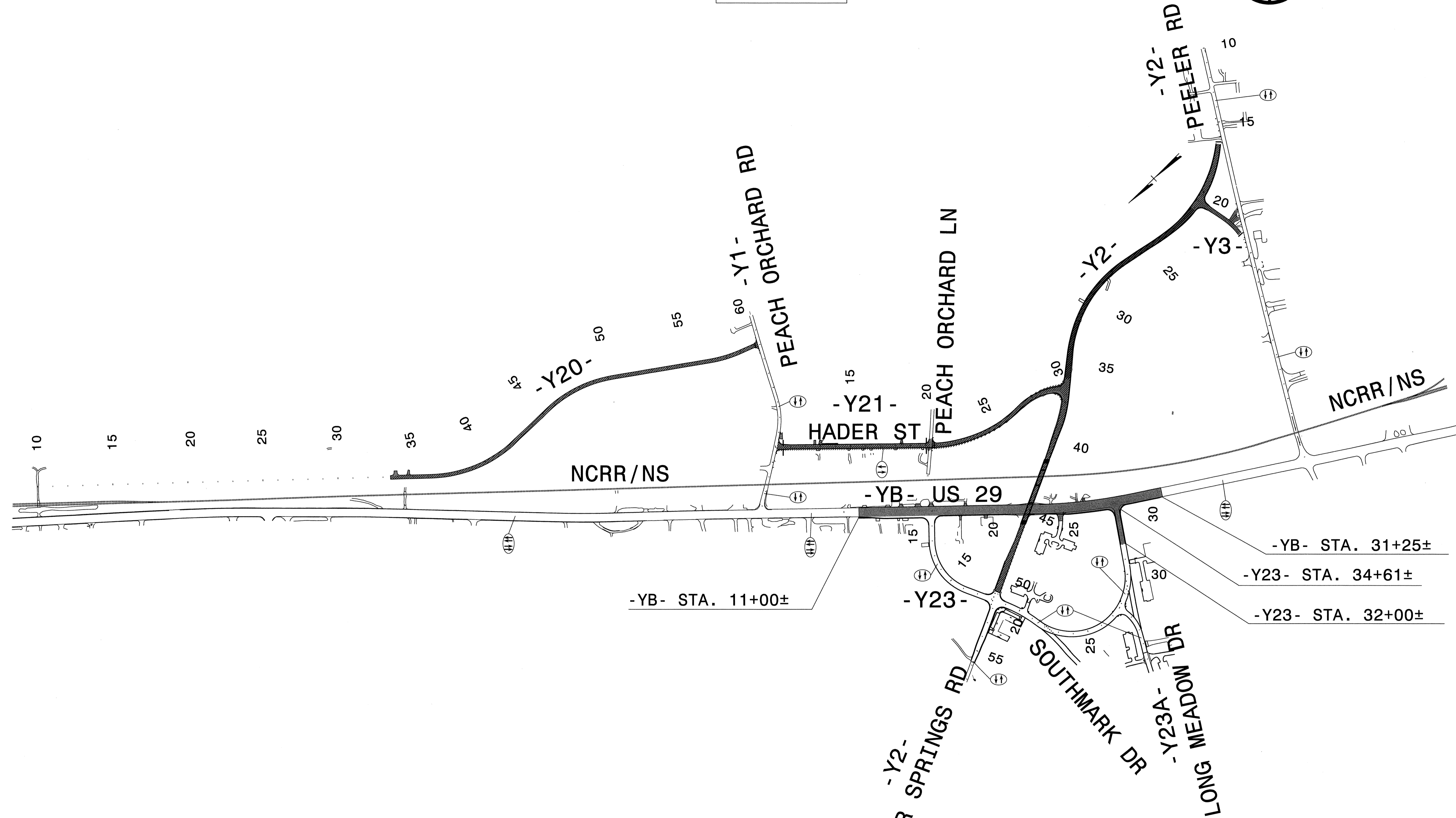
APPROVED: <i>[Signature]</i>	DATE: 1-8-13	-Y23- TEMPORARY TRAFFIC PATTERN	
SCALE: NONE	DATE: DEC-12		REVISIONS
DWG. BY: TAG	DESIGN BY: TAG		
REVIEWED BY: MTR			



APPROVED: <i>[Signature]</i>	DATE: 1-8-13	Y23- AND -Y23A- TEMP. TRAFFIC PATTERN	
	SCALE: NONE		REVISIONS
	DATE: DEC-12		
	DWG. BY: TAG		
	DESIGN BY: TAG		
REVIEWED BY: MTR			CADD FILE



PHASE III



APPROVED: <i>[Signature]</i>	DATE: 1-8-13	PHASE III		
	SCALE: NONE			
	DATE: DEC-12			REVISIONS
	DWG. BY: TAG			
	DESIGN BY: TAG			
REVIEWED BY: MTR				

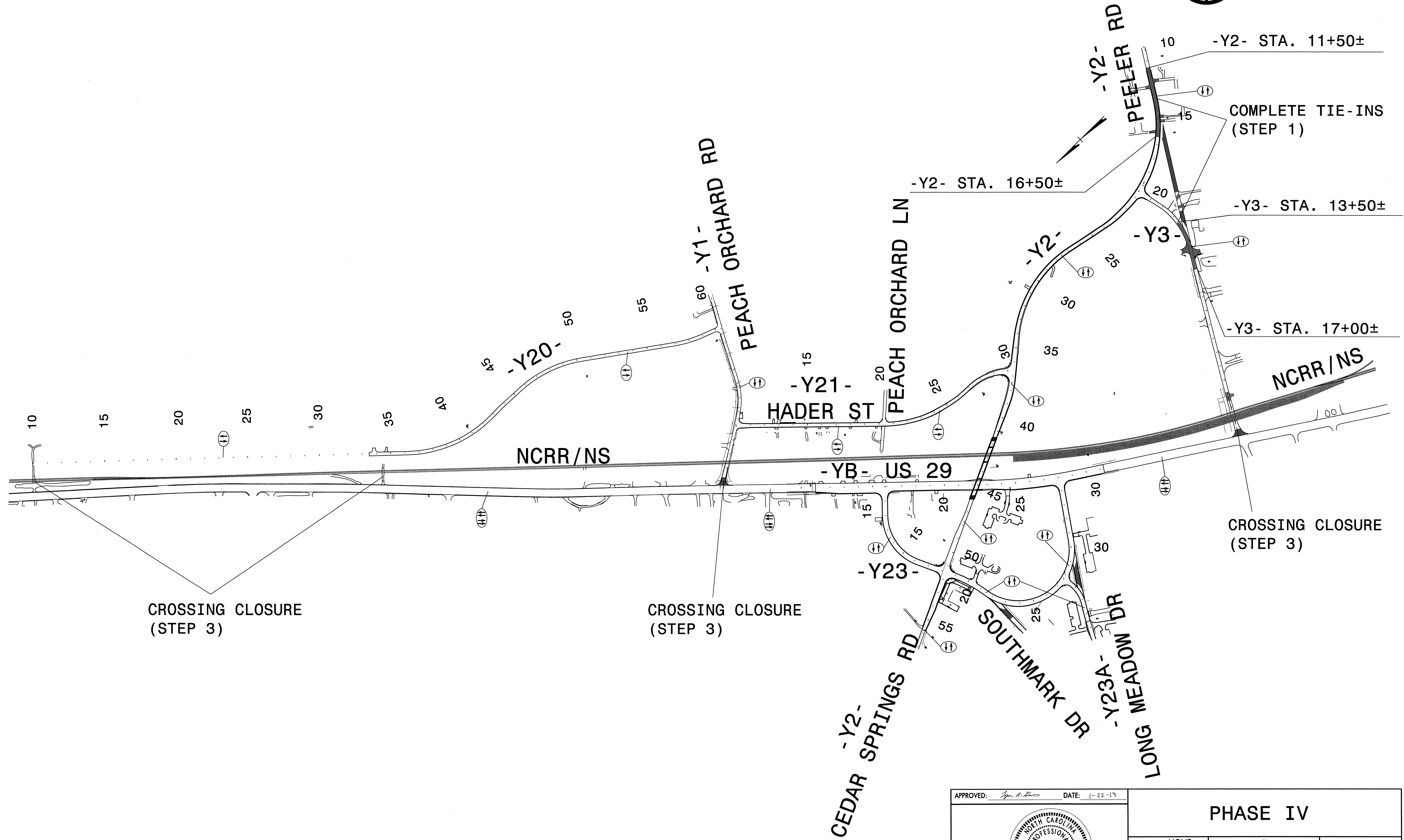
0151DEL_P10b1

PHASE IV

Florence & Hutcheson
 CONSULTING ENGINEERS
 5121 Kingdom Way, Suite 100 Raleigh, NC 27607
 NC License No. P-0258



PROJ. REFERENCE NO.	SHEET NO.
P-5206A	TMP-12



1/22/2013
 I:\XIP\5206A\5206A_TrafficControl\TCP\5206a_tmp_piv_ov.dgn
 Florence & Hutcheson

APPROVED: <i>[Signature]</i>	DATE: 1-22-13	PHASE IV	
	SCALE: NONE		
	DATE: DEC-12		
	DWG. BY: TAG		
	DESIGN BY: TAG		
REVIEWED BY: MTR		REVISIONS	