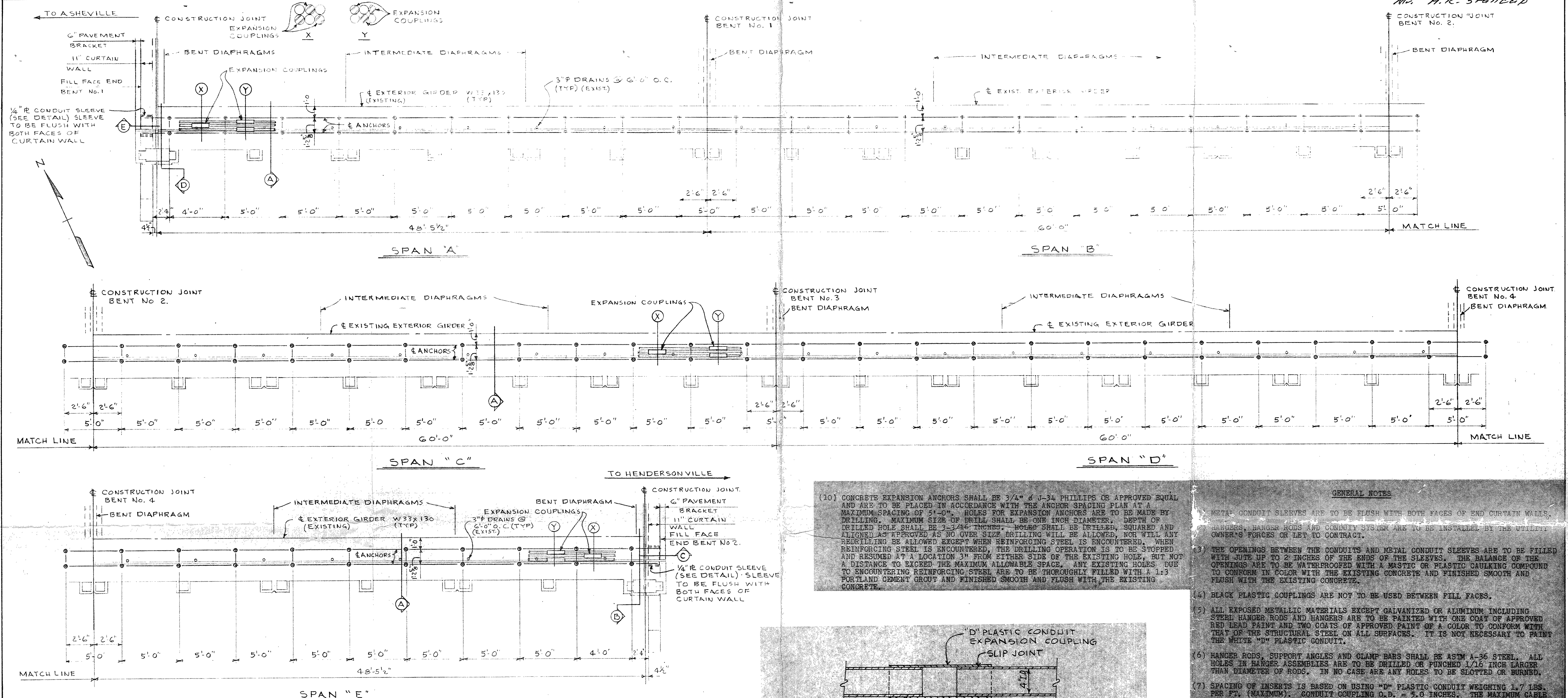


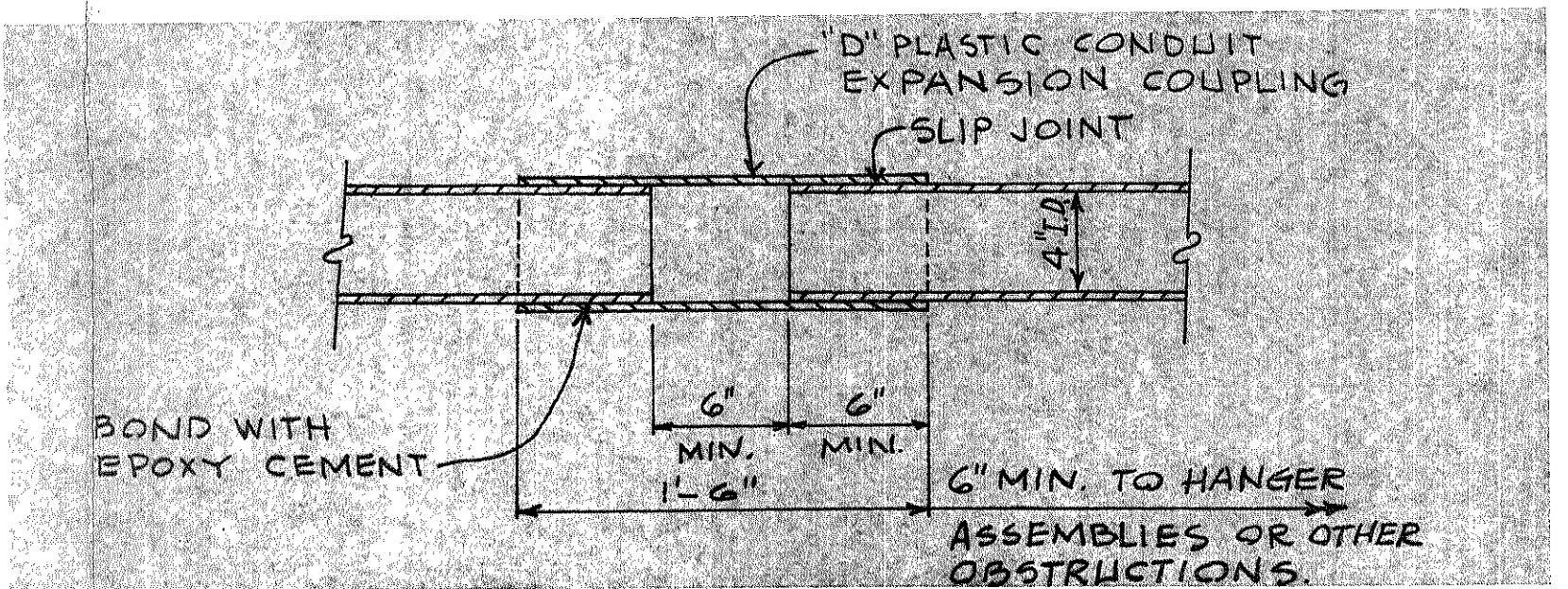
Mr. H.K. Stallcup



ANCHOR SPACING PLAN

Note: Anchor spacings and locations to be verified in the field

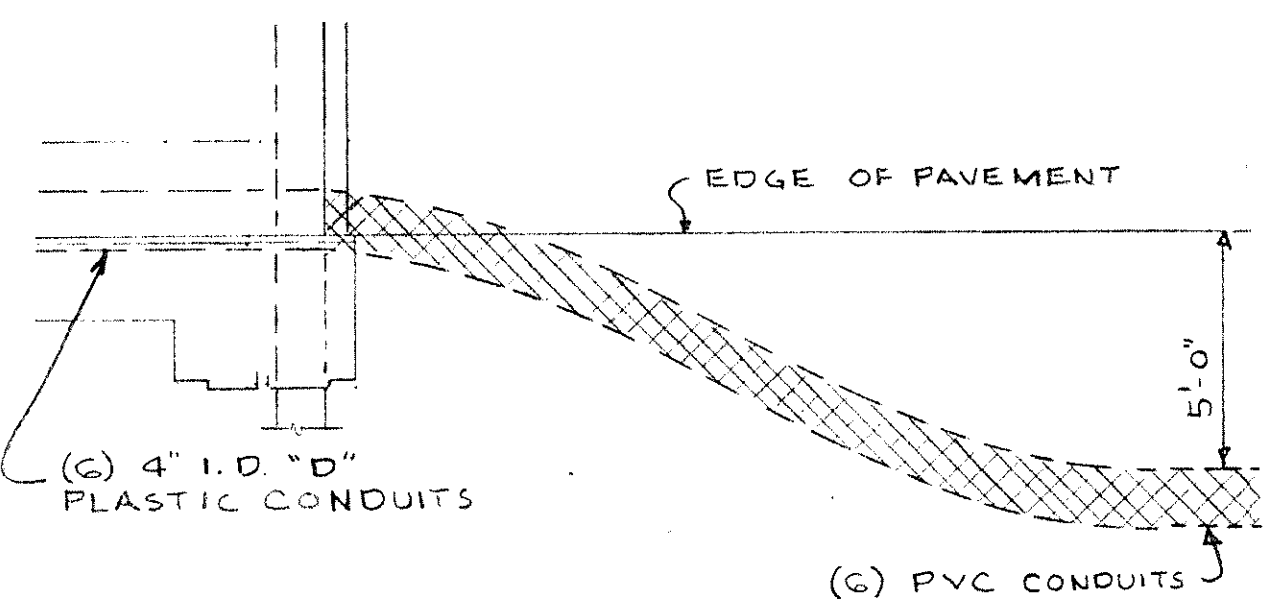
(10) CONCRETE EXPANSION ANCHORS SHALL BE 3/4" J-34 PHILLIPS OR APPROVED EQUAL AND ARE TO BE PLACED IN ACCORDANCE WITH THE ANCHOR SPACING PLAN AT A MAXIMUM SPACING OF 5'-0". HOLES FOR EXPANSION ANCHORS ARE TO BE MADE BY DRILLING. MAXIMUM SIZE OF DRILL SHALL BE ONE INCH DIAMETER. DEPTH OF DRILLED HOLE SHALL BE 3-3/16 INCHES. HOLES SHALL BE DRILLED, SQUARED AND ALIGNED AS APPROVED AS NO OVER SIZE DRILLING WILL BE ALLOWED, NOR WILL ANY RE-DRILLING BE ALLOWED EXCEPT WHEN REINFORCING STEEL IS ENCOUNTERED. WHEN REINFORCING STEEL IS ENCOUNTERED, THE DRILLING OPERATION IS TO BE STOPPED AND RESUMED AT A LOCATION 3" FROM EITHER SIDE OF THE EXISTING HOLE, BUT NOT A DISTANCE TO EXCEED THE MAXIMUM ALLOWABLE SPACE. ANY EXISTING HOLES DUE TO ENCOUNTERING REINFORCING STEEL ARE TO BE THOROUGHLY FILLED WITH A 1:3 PORTLAND CEMENT GROUT AND FINISHED SMOOTH AND FLUSH WITH THE EXISTING CONCRETE.



EXPANSION COUPLING DETAIL

NOTE: COUPLINGS ARE NOT TO BE PLACED ON HANGERS, AT DIAPHRAGMS, OR INSIDE CONDUIT SLEEVES. EXPANSION COUPLINGS TO BE USED ONLY WHERE SHOWN ON PLAN. ALL OTHER COUPLINGS TO BE STANDARD "D" PLASTIC COUPLINGS.

- GENERAL NOTES**
- METAL CONDUIT SLEEVES ARE TO BE FLUSH WITH BOTH FACES OF END CURTAIN WALLS. HANGERS, HANGER RODS AND CONDUIT SYSTEM ARE TO BE INSTALLED BY THE UTILITY OWNER'S FORCES OR LET TO CONTRACT.
 - THE OPENINGS BETWEEN THE CONDUITS AND METAL CONDUIT SLEEVES ARE TO BE FILLED WITH JUTE UP TO 2 INCHES OF THE ENDS OF THE SLEEVES. THE BALANCE OF THE OPENINGS ARE TO BE WATERPROOFED WITH A MASTIC OR PLASTIC GAITLING COMPOUND TO CONFORM IN COLOR WITH THE EXISTING CONCRETE AND FINISHED SMOOTH AND FLUSH WITH THE EXISTING CONCRETE.
 - BLACK PLASTIC COUPLINGS ARE NOT TO BE USED BETWEEN FILL FACES.
 - ALL EXPOSED METALLIC MATERIALS EXCEPT GALVANIZED OR ALUMINUM INCLUDING STEEL HANGER RODS AND HANGERS ARE TO BE PAINTED WITH ONE COAT OF APPROVED RED LEAD PAINT AND TWO COATS OF APPROVED PAINT OF A COLOR TO CONFORM WITH THAT OF THE STRUCTURAL STEEL ON ALL SURFACES. IT IS NOT NECESSARY TO PAINT THE WHITE "D" PLASTIC CONDUIT.
 - HANGER RODS, SUPPORT ANGLES AND CLAMP BARS SHALL BE ASTM A-36 STEEL. ALL HOLES IN HANGER ASSEMBLIES ARE TO BE DRILLED OR PUNCHED 1/16 INCH LARGER THAN DIAMETER OF RODS. IN NO CASE ARE ANY HOLES TO BE SLOTTED OR BURNED.
 - SPACING OF INSERTS IS BASED ON USING "D" PLASTIC CONDUIT WEIGHING 1.7 LBS. PER FT. (MAXIMUM); CONDUIT COUPLING O.D. = 5.0 INCHES. THE MAXIMUM CABLE WEIGHT SHALL NOT EXCEED 5.84 LBS. PER FT.
 - EACH "D" PLASTIC CONDUIT IS TO RUN FROM FILL FACE TO FILL FACE WHERE IT IS TO CONNECT TO A 4" I.D. "C" PLASTIC PVC ENCASED CONDUIT USING SOUTHERN BELL METHOD NO. 3. THE PVC CONDUIT IS TO GRADUALLY CURVE TO THE LOCATION SHOWN IN THE PARTIAL PLAN SHOWN ON THESE DRAWINGS ON BOTH ENDS OF THE BRIDGE.
 - OPENINGS BETWEEN END CURTAIN WALLS AND STEEL CONDUIT SLEEVES ARE TO BE FILLED WITH NON-SHRINKING GROUT TO BE FINISHED TO CONFORM IN COLOR WITH THE EXISTING CONCRETE AND TO BE RUBBED SMOOTH AND FLUSH WITH THE EXISTING CONCRETE.



PARTIAL PLAN (SIMILAR AT EA. END OF BRIDGE)

SEE SHEET A-24-2 FOR SECTIONS AND DETAILS

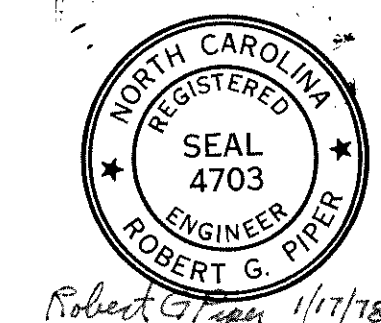
OLD STATE PROJECT No. 8415

APPROVED: DATE 11-26-78
 APPROVED AS NOTED: DATE
 BY: [Signature]
 FOR: [Signature]
 HEAD OF STRUCTURE DESIGN
 N. C. DEPT. OF TRANSPORTATION
 DIVISION OF HIGHWAYS

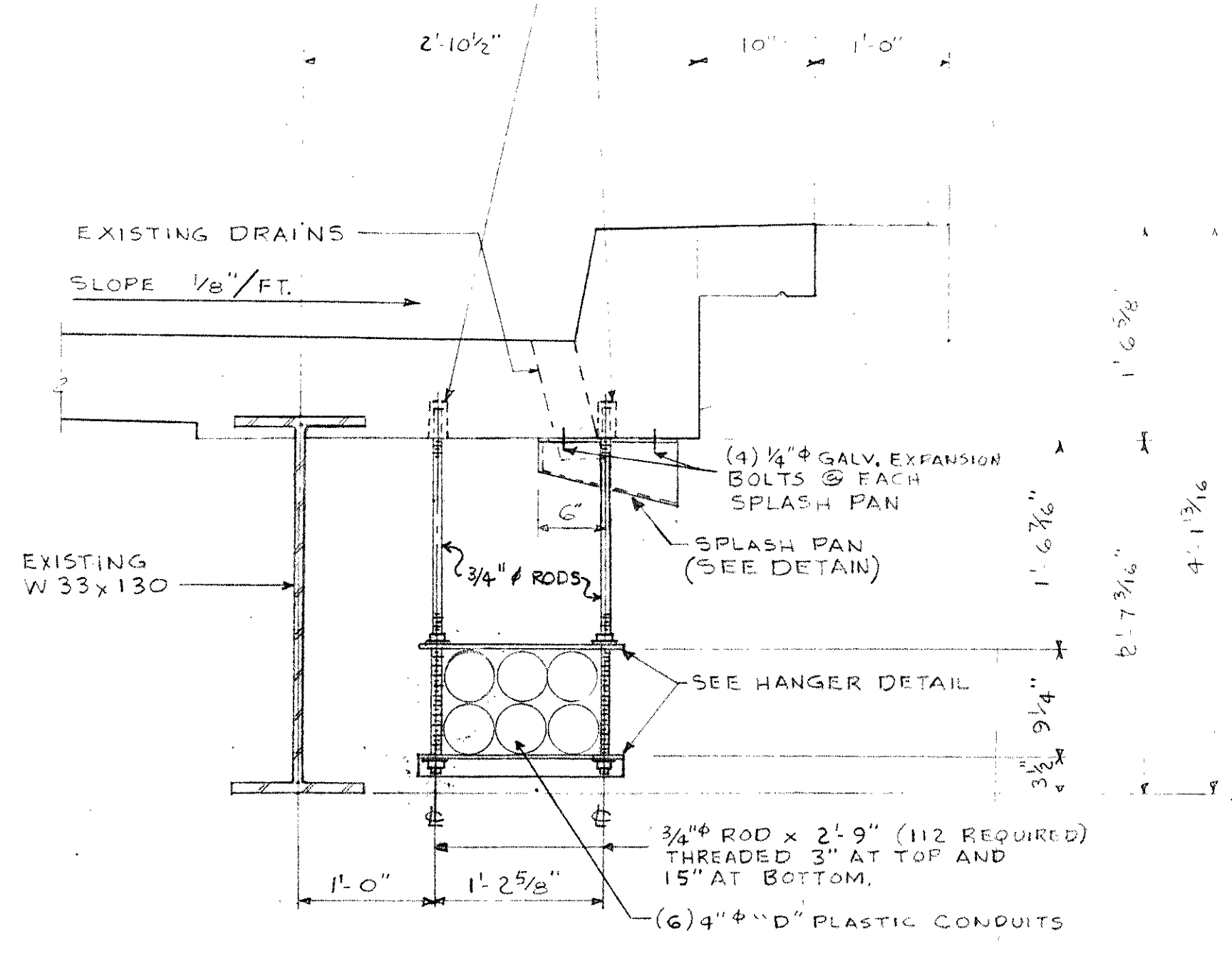
SOUTHERN BELL TELEPHONE & TELEGRAPH CO
 CONDUIT ATTACHMENT TO EXISTING BRIDGE
 NO. 191-95-30 CARRYING NC-191 OVER
 FRENCH BROAD RIVER BETWEEN ASHEVILLE
 AND HENDERSONVILLE, HENDERSON COUNTY, N. C.

ROBERT G. PIPER & ASSOCIATES
STRUCTURAL ENGINEERS
 ONE TEN THOMAS STREET, WINSTON-SALEM, N.C. 27101
 PHONE (919) 725-8292

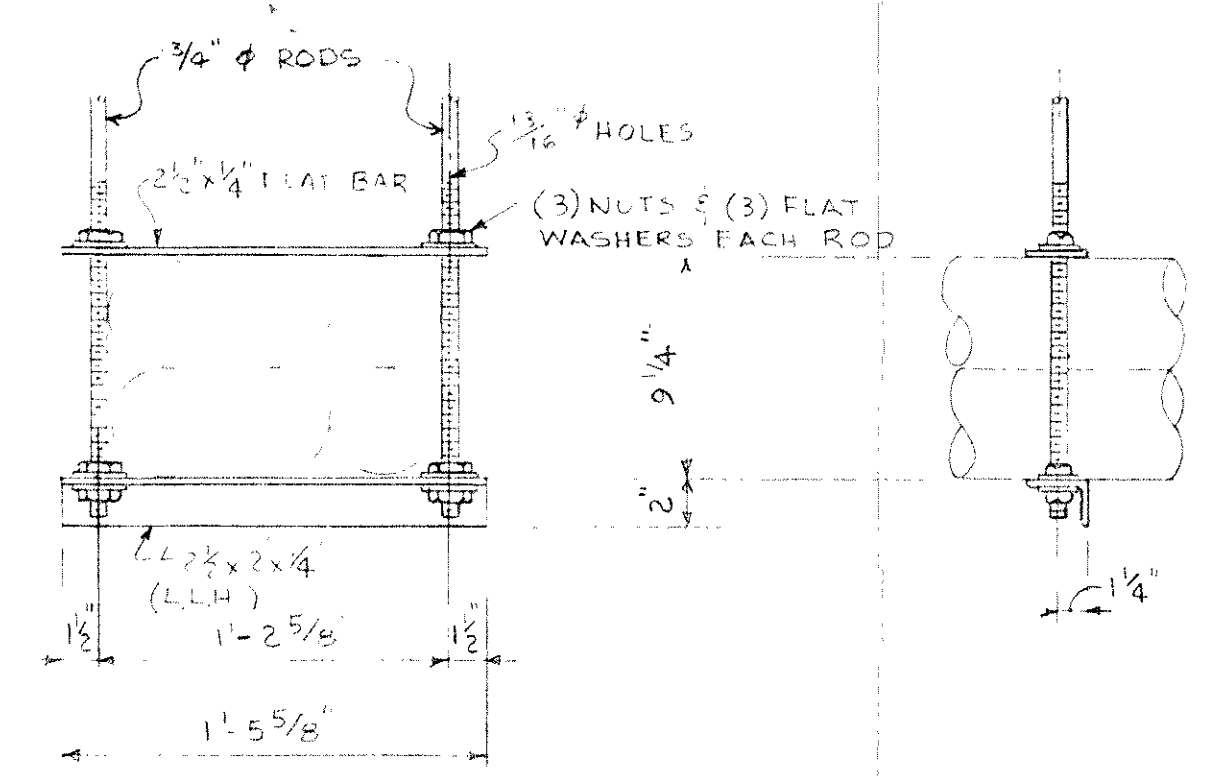
DRAWN A.H.	CHECKED M.S.
DATE 1/17/78	
PROJECT NO. A-24	
DRAWING NO. A-24-1	
OF 2	



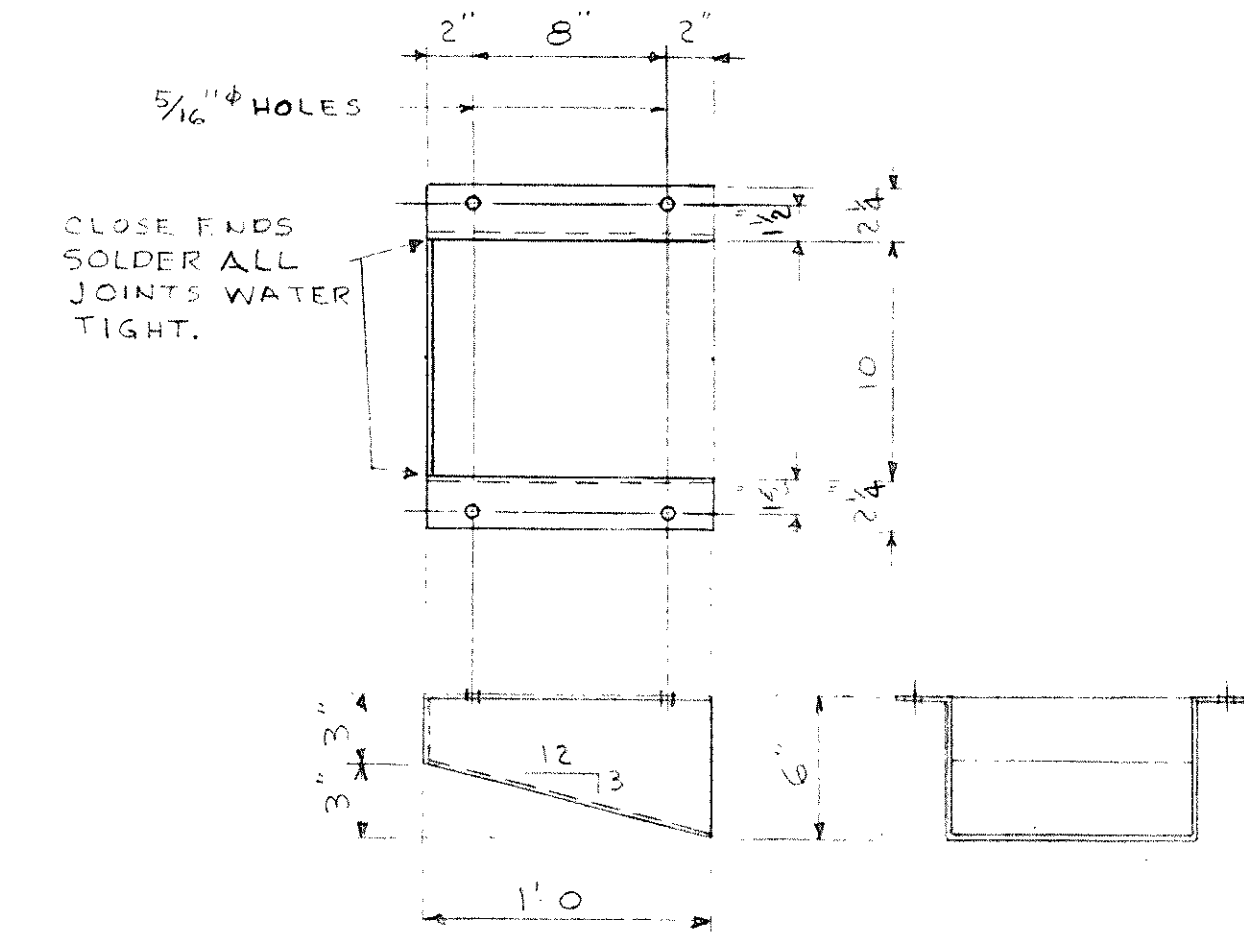
ANCHORS TO BE J-34 PHILLIPS ROUND EXPANSION CASES. AFTER HOLE FOR CASE IS DRILLED IN CONCRETE REMOVE ALL FINES & OTHER FOREIGN MATERIAL. SET EXPANSION CASE BY STRIKING PRIOR TO HANGING LOADS.



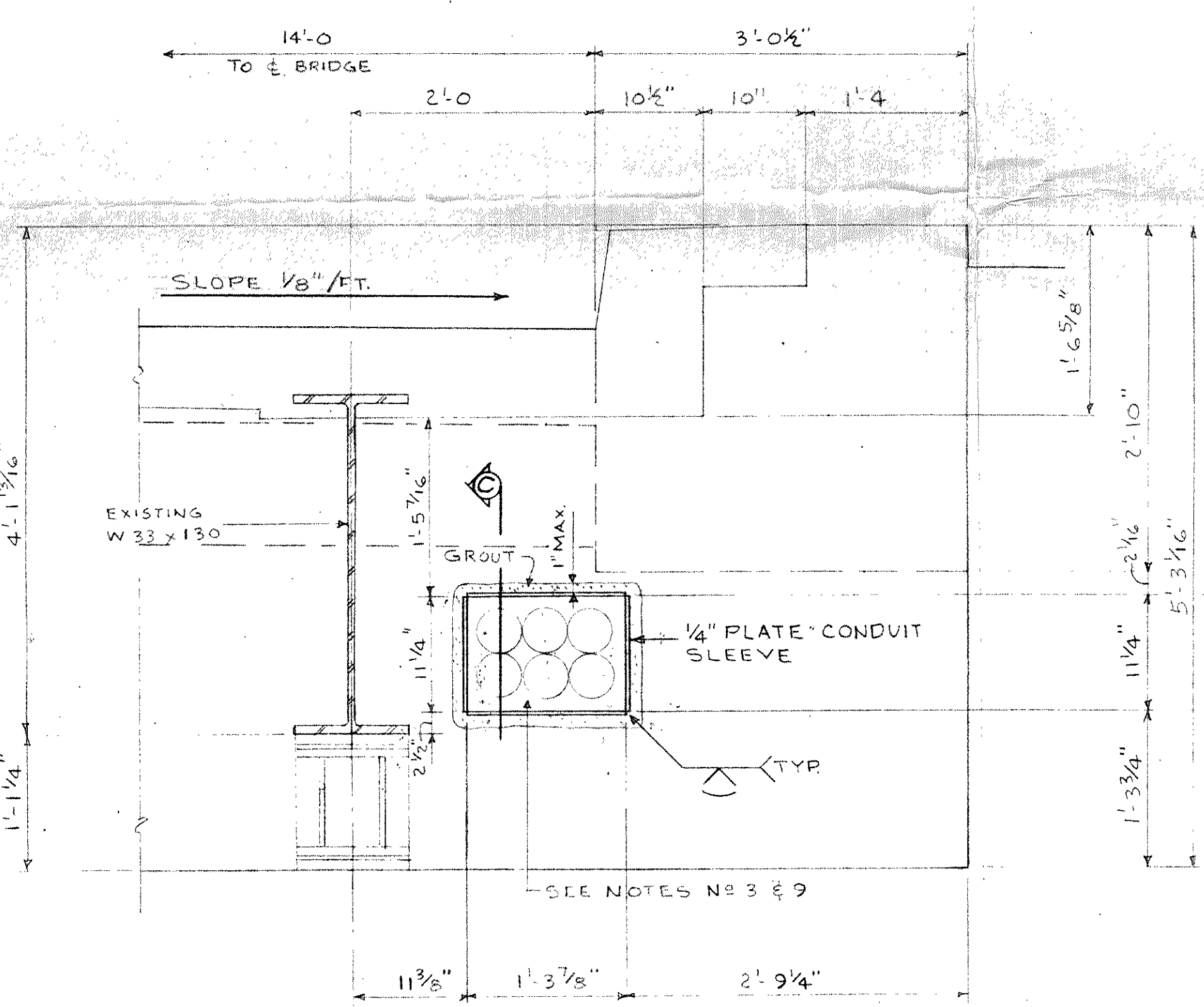
SECTION A



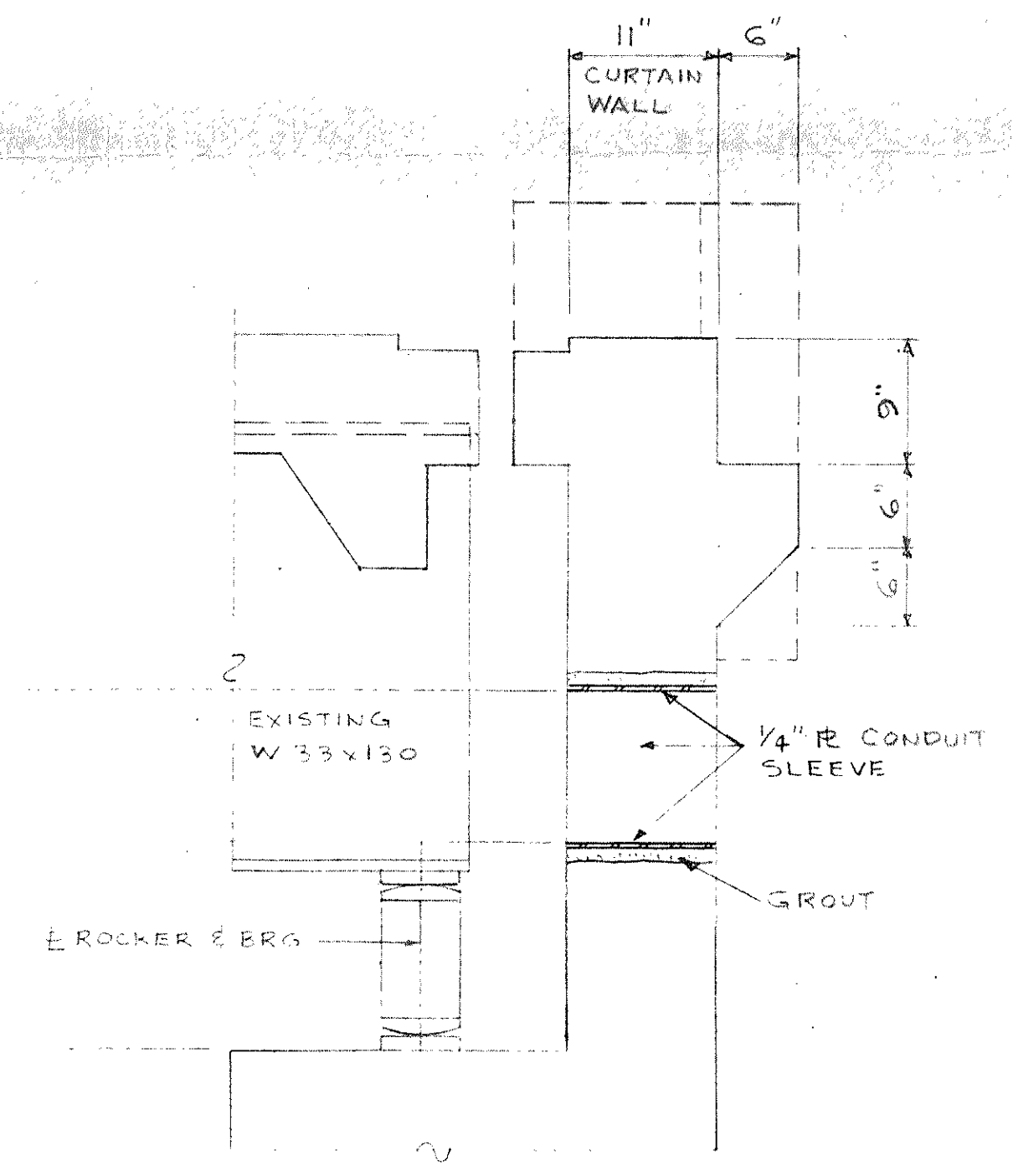
HANGER DETAIL
(56 REQUIRED)



SPLASH PAN DETAIL
SPLASH PANS TO BE GALV. 10 GA. STEEL CUT AND BENT TO DIMENSIONS SHOWN.
(46 REQUIRED)
NOTE: LOCATE DRAINS AND INSTALL SPLASH PANS UNDER DRAINS BEFORE INSTALLING HANGER ASSEMBLIES



SECTION B SHOWN @ END BENT NO. 2
SECTION D OPPOSITE @ END BENT NO. 1



SECTION C SHOWN @ CURTAIN WALL
SECTION E OPPOSITE

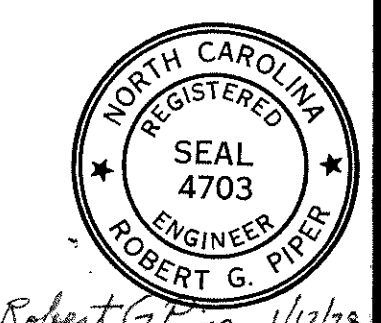


TOP & BOTTOM PLATES (4 REQUIRED)
END PLATES (4 REQUIRED)
CONDUIT SLEEVE DETAILS (2 SLEEVES REQUIRED)

SEE SHEET A-24-1 FOR HANGER SPACING PLAN AND GENERAL NOTES

OLD STATE PROJECT No. 8415

APPROVED: DATE 1-26-78
APPROVED AS NOTED: DATE
BY: [Signature]
FOR: L. M. TEMPLE
HEAD OF STRUCTURE DESIGN
N. C. DEPT. OF TRANSPORTATION
DIVISION OF HIGHWAYS



SOUTHERN BELL TELEPHONE & TELEGRAPH CO.
CONDUIT ATTACHMENT TO EXISTING BRIDGE
NO. 191-95-30 CARRYING NC-191 OVER
FRENCH BROAD RIVER BETWEEN ASHEVILLE
AND HENDERSONVILLE, HENDERSON COUNTY, N.C.

ROBERT G. PIPER & ASSOCIATES
STRUCTURAL ENGINEERS
ONE TEN THOMAS STREET, WINSTON-SALEM, N.C. 27101
PHONE (919) 725-9292

DRAWN A. H.	CHECKED U.S.
DATE 1/17/78	
PROJECT NO. A-24	
DRAWING NO. A-24-2	
OF 2	