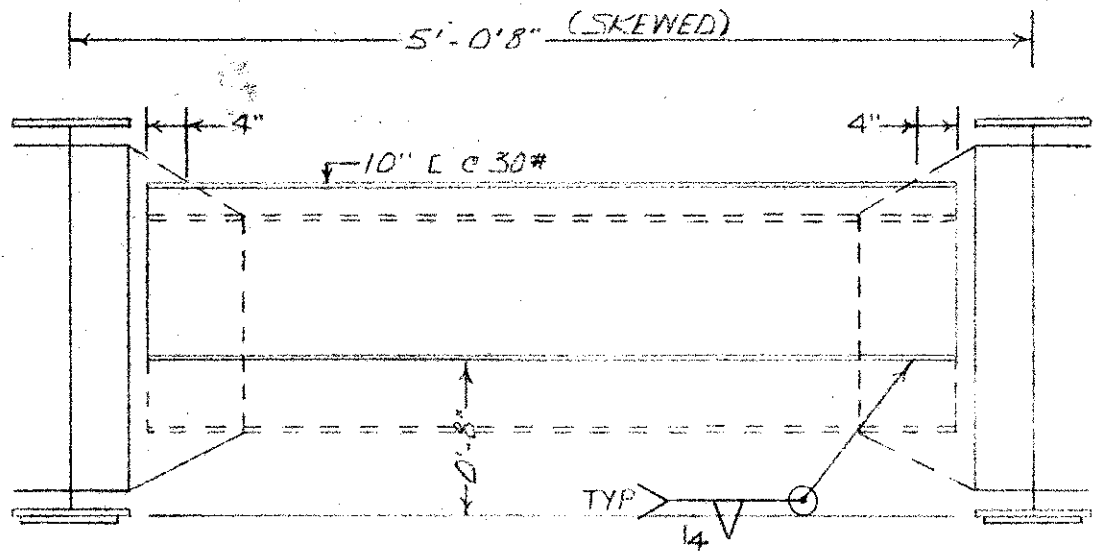


SOUTHERN BELL TELEPHONE AND TELEGRAPH COMPANY										APPROVED:	
ZONE	EXCH	NEWTON	OFF.	ENGR	DFTSMN	PROJ NO.			DISTRICT ENGINEER		
	DIST	LENDIR	STATE	L.I.S	PD	53066					
CODE	NATURE AND NECESSITY OF WORK:			APPD	DATE	EST-GR-JO			DIVISION ENGINEER		
	SPECIFICATION AND METHOD FOR BRIDGE ATTACHMENT			GRM	4/24/74	N-5620					
VOLTS GRD	NORTH CAROLINA HIGHWAY 16					DWG NO.			GR EXPND		
	NOT TO SCALE					1 OF 1			PLT RETD		
TAX DIST									SALVAGE		
RECORDS REF									MTCE		
	DATE	ENGR	APPD	NATURE OF REVISION					GR ADDS.		
									NY CAT.		

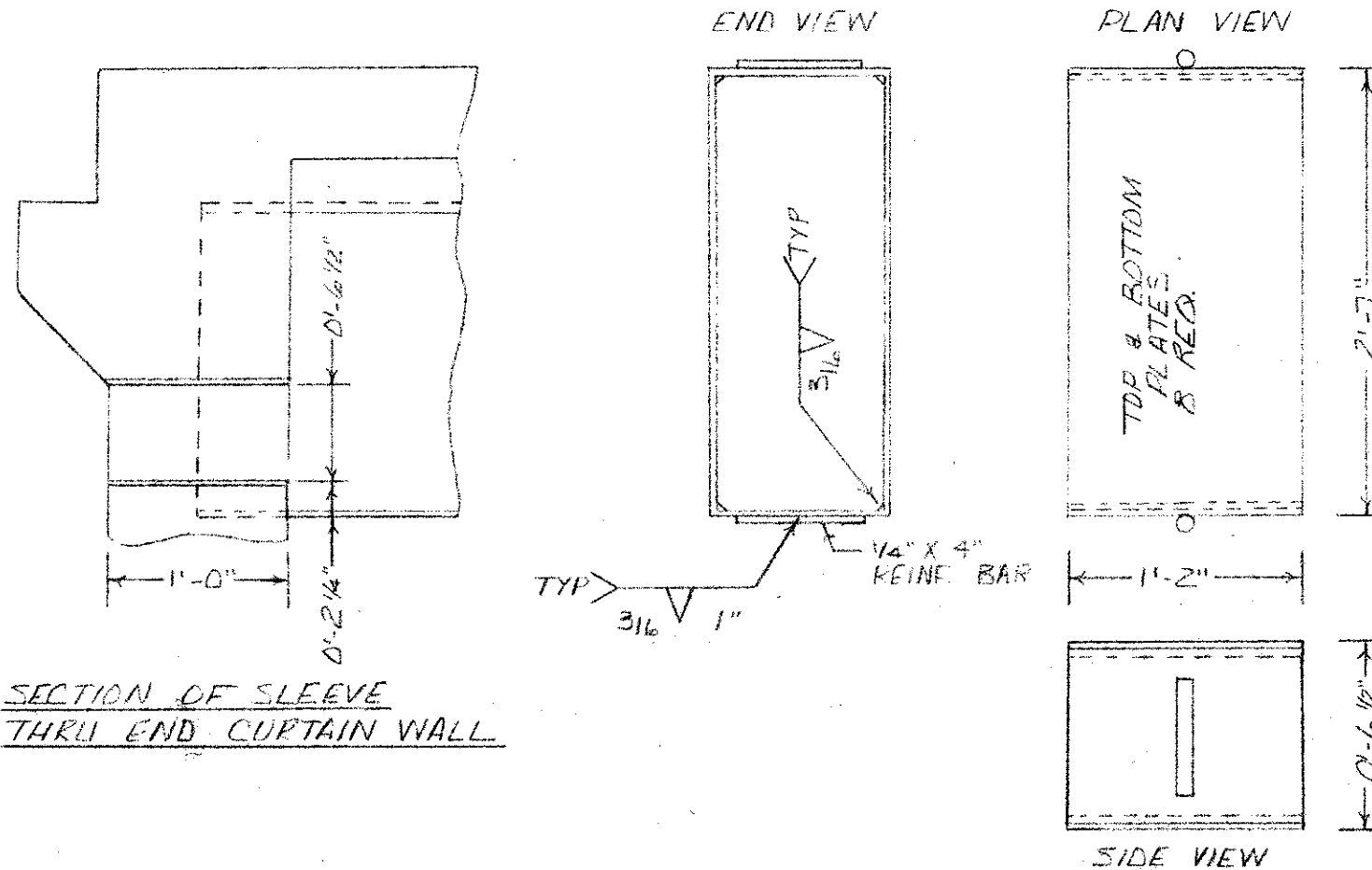
NOTES FOR ATTACHMENT OF TELEPHONE CONDUITS ON EXISTING CONCRETE GIRDER BRIDGES.

- Openings for metal conduit sleeves in end curtain walls to be made in a neat and workmanlike manner.
- Openings for metal conduit sleeves to be a maximum of 2" larger than outside of conduit sleeves.
- Openings for metal conduit sleeves to be made with electric power drill only, no hammer of any type to be used.
- Openings between ear walls and metal conduit sleeves to be filled with non-shrinking grout, to be finished to conform in color with existing concrete and is to be rubbed smooth and flush with the existing concrete.
- Metal conduit sleeves are to be flush with roadway faces of end curtain walls.
- All exposed metallic material, that is not galvanized or aluminum, attached to the structure is to be given one coat of approved red lead paint and two coats of approved aluminum paint on all surfaces.
- A 1/2" cork seal is to be placed in the openings between the conduits and metal conduit sleeves, filled with jute up to 2" of both ends of the sleeves. The balance of the openings are to be waterproofed with a mastic or plastic caulking compound to conform in color with the existing concrete and finished smooth and flush with the existing concrete.
- Holes for expansion anchors to be made with electric drill. Maximum size of drill to be 1 3/8". Holes for expansion anchors are to be drilled, squared and aligned as approved, as no over size drilling will be allowed, nor will any redrilling be allowed except when reinforcing steel is encountered. When reinforcing steel is encountered, the drilling operation is to be stopped and resumed at a location 3" from either side of the existing hole, but not at a distance to exceed the maximum allowable space. Any existing holes due to encountering reinforcing steel are to be thoroughly filled with a 1:3 portland cement grout and finished smooth and flush with the existing concrete.
- All holes in support angles and treated timbers are to be drilled 1/16" larger than outside diameter of hanger rods. In no case are holes to be slotted.
- Approved expansion anchors and hanger assemblies are to be placed on 5' maximum centers (except where indicated otherwise). Depth of holes for expansion cases to be 3 3/8".
- Black plastic couplings are not to be used.
- Hanger rods to be 1'-6" from nearest part of end of span and interior diaphragms and span length is not to exceed 6'-0".



INTERIOR DIAPHRAGM DETAIL

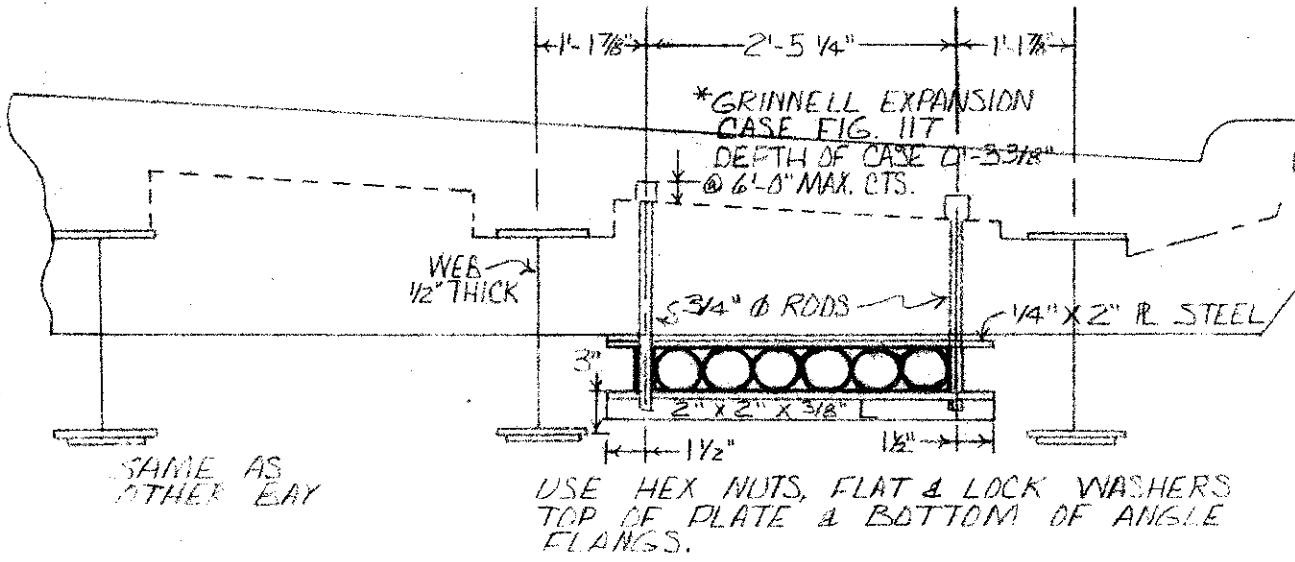
- REMOVE EXISTING 12" C x 25# x 4'-2 1/2" FROM CONNECTOR PLATES.
- REPAIR ANY UNDERCUTTING OF CONNECTORS, REMOVE DROSS AND GRIND SMOOTH.
- DETERMINE IN THE FIELD THE LENGTH OF THE PROPOSED 10" C x 30# NECESSARY TO PROVIDE FOR A MINIMUM OF 4" HORIZONTAL FILLET WELD ALONG THE TOP FLANGE OF THE CHANNEL AND TO PROVIDE A MINIMUM VERTICAL CLEARANCE OF 0'-8" TO THE BOTTOM FLANGE AS SHOWN ABOVE.
- AFTER THE NEW DIAPHRAGM HAS BEEN PLACED, IT IS TO BE CLEARED OF DROSS AND PAINTED IN ACCORDANCE WITH ITEM 6 OF NOTES.



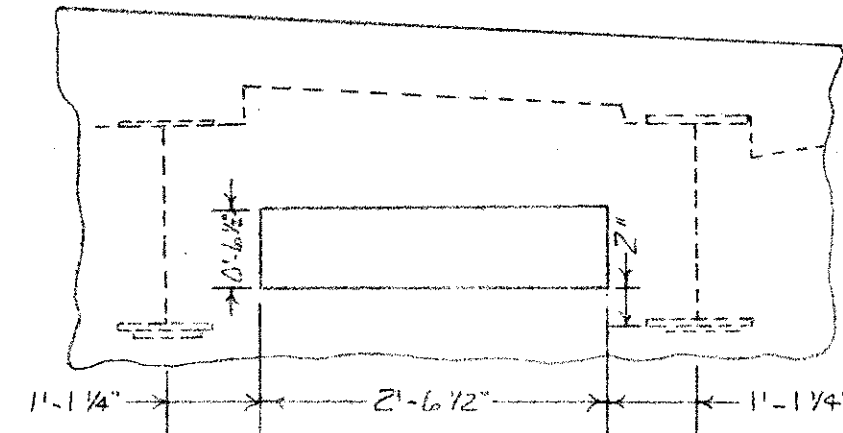
SECTION OF SLEEVE THRU END CURTAIN WALL

SLEEVE DETAIL

- OPENINGS THROUGH THE END CURTAIN WALLS ARE TO BE MADE PARALLEL TO THE BEAMS AND IN ACCORDANCE WITH ITEM 2 OF THE NOTES.
- FIELD CUT EXCESS SLEEVE STEEL ON THE ROADWAY FACE OF END CURTAIN WALLS BY USING HEAT SHIELD AND GRIND THE SLEEVE FLUSH WITH THE CONCRETE.

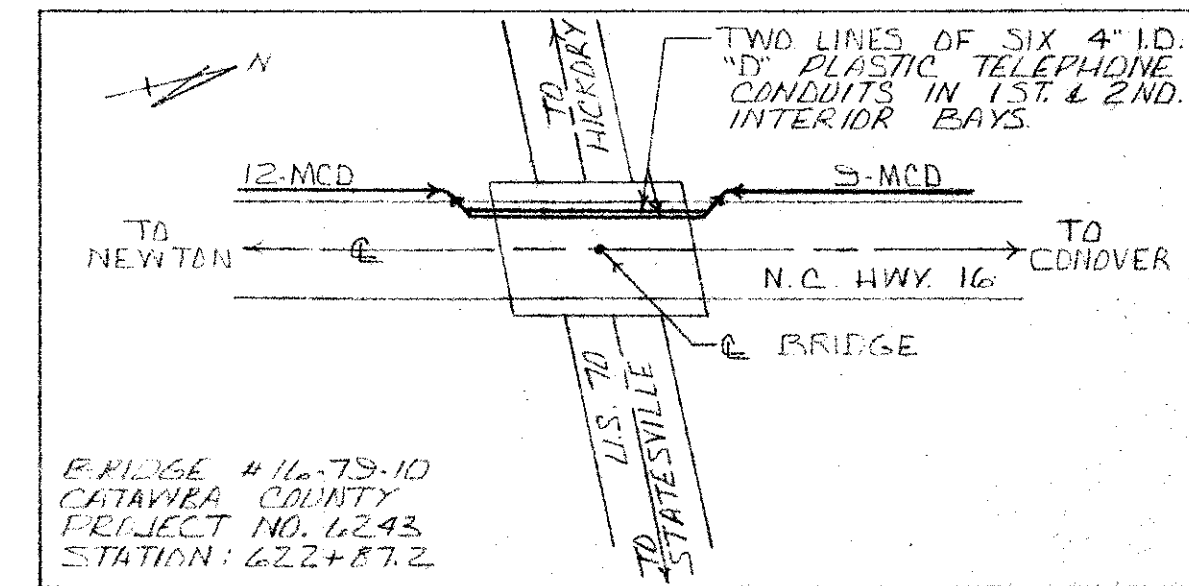


END OF SPAN DIAPHRAGM VIEW  
 \* WIDTH WITH COLLARS STAGGERED, NONE AT DIAPHRAGM OR ON HANGER ANGLES  
 6-4" I.D. "D" PLASTIC CONDUITS



END CURTAIN WALL VIEW  
 21-1/2" X 0'-6 1/2" X 1/4" (INSIDE DIMENSIONS)  
 CONDUIT SLEEVE TO BE FLUSH WITH ROADWAY FACE OF END CURTAIN WALLS

LOCATION SKETCH



BRIDGE #116-73-10  
 CATAWBA COUNTY  
 PROJECT NO. 6243  
 STATION: 622+87.2

APPROVED: DATE 5-15-74

APPROVED AS NOTED: DATE

BY W. J. K...  
 FOR: L. M. TEMPLE  
 HEAD OF STRUCTURE DESIGN  
 N. C. DEPT. OF TRANSPORTATION  
 DIVISION OF HIGHWAYS

