

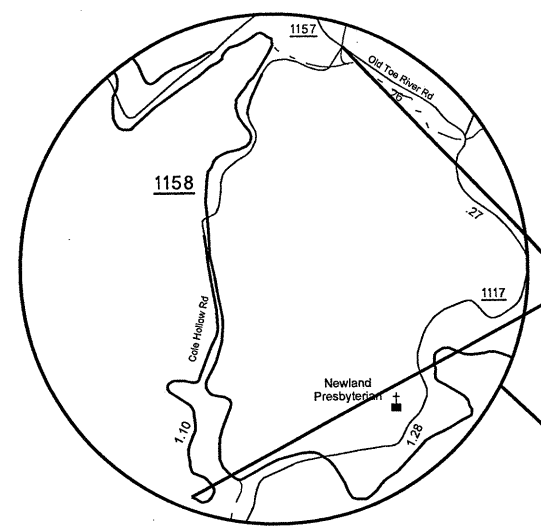
STATE OF NORTH CAROLINA  
DIVISION OF HIGHWAYS

**AVERY COUNTY**

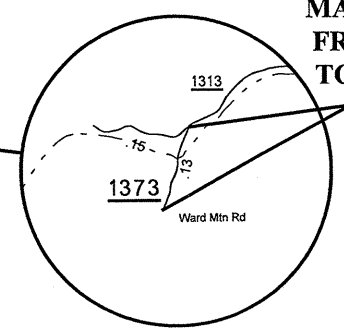
ASPHALT SURFACE TREATMENT

11C.014082  
11C.095096  
11C.095098  
11CR.20061.20  
11CR.20141.20  
11CR.20951.20

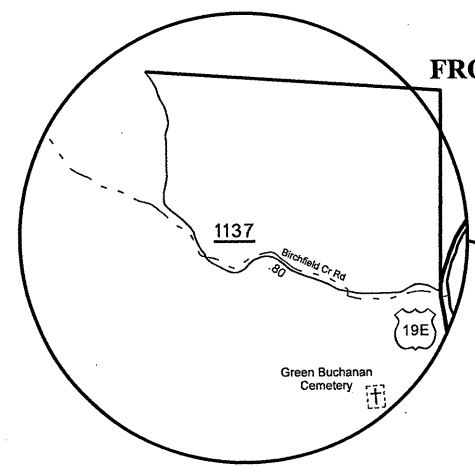
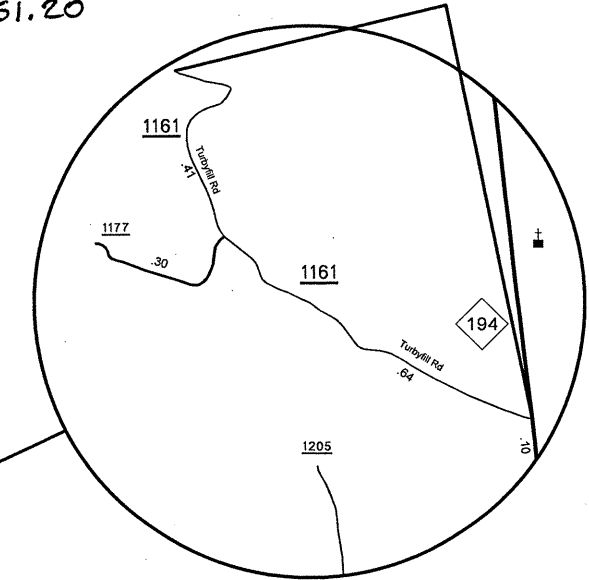
MAP #5 SR 1161  
FROM NC 194 TO DEAD END



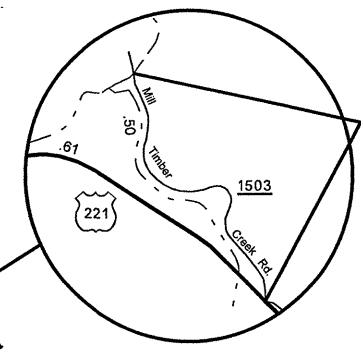
MAP #1 SR 1158  
FROM SR 1157 TO EOM



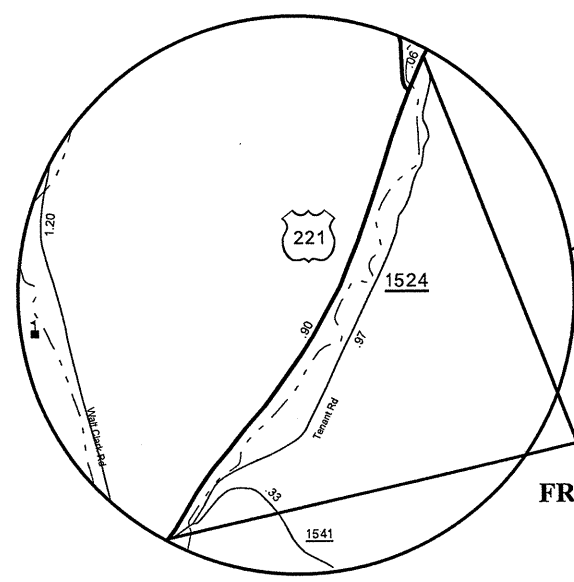
MAP #4 SR 1373  
FROM SR 1313  
TO DEAD END



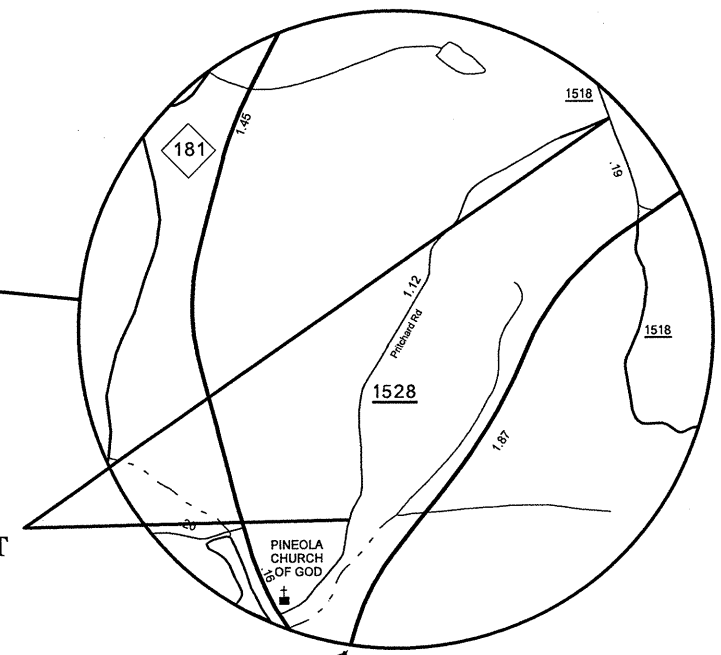
MAP #3 SR 1137  
FROM US 19E TO EOM



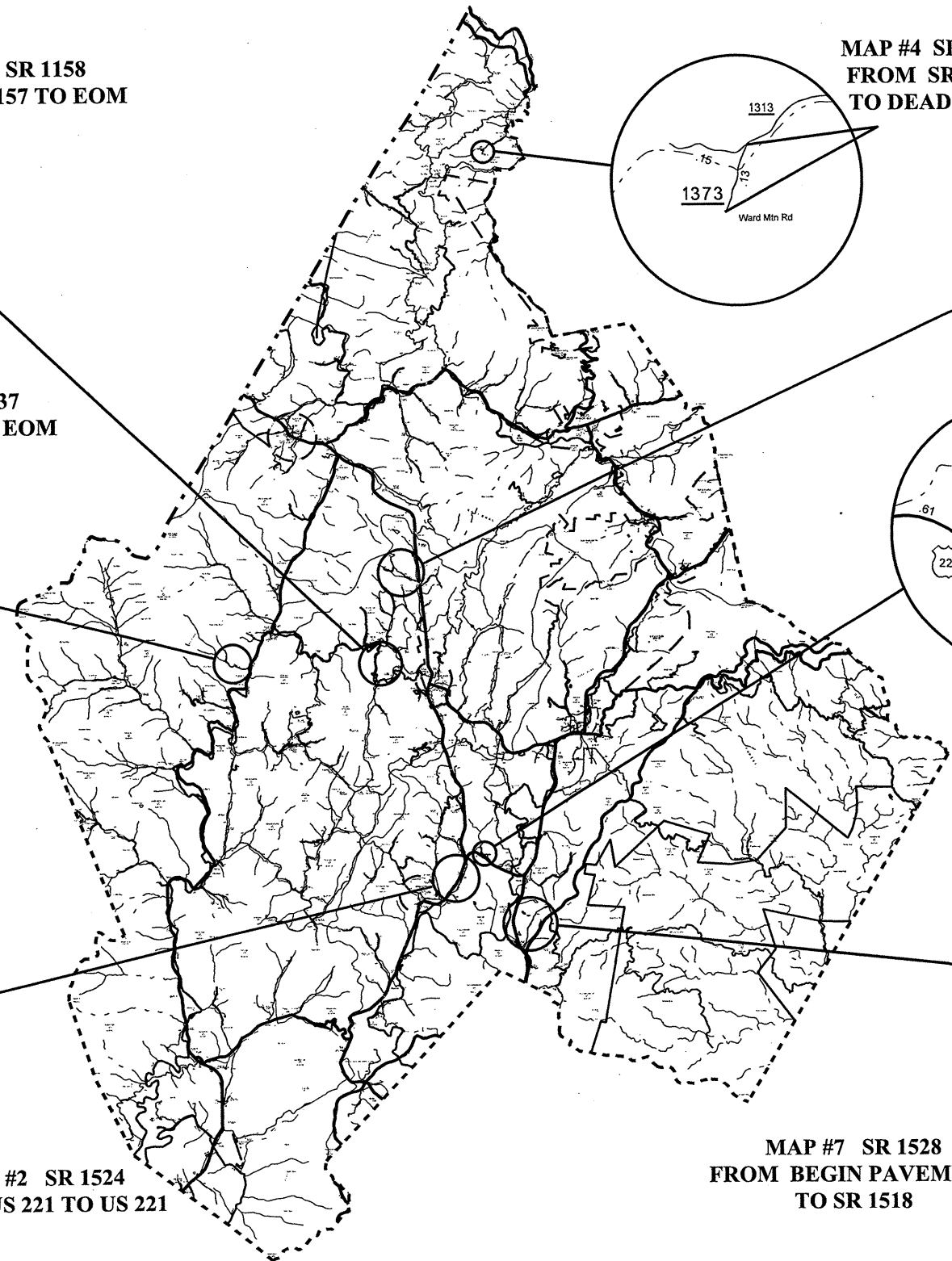
MAP #6 SR 1503  
FROM US 221 TO BRIDGE



MAP #2 SR 1524  
FROM US 221 TO US 221



MAP #7 SR 1528  
FROM BEGIN PAVEMENT  
TO SR 1518



8/17/99

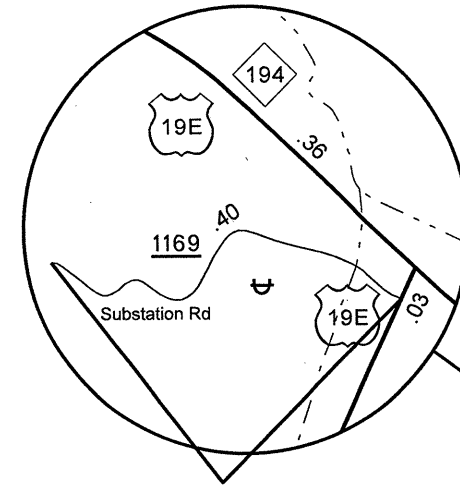
C:\Users\1036\Documents\Projects\Manager\Contracts\Resurfacing 2013\Dist 2 AST\2013 Avery AST Maps.dgn  
11/17/13 10:36 AM

STATE OF NORTH CAROLINA  
DIVISION OF HIGHWAYS

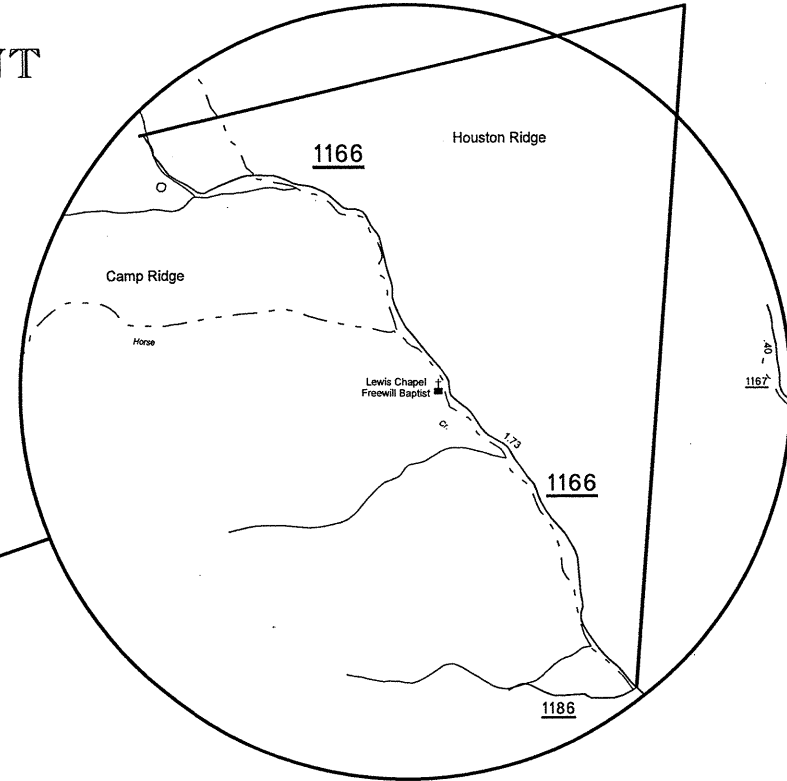
**AVERY COUNTY**

ASPHALT SURFACE TREATMENT

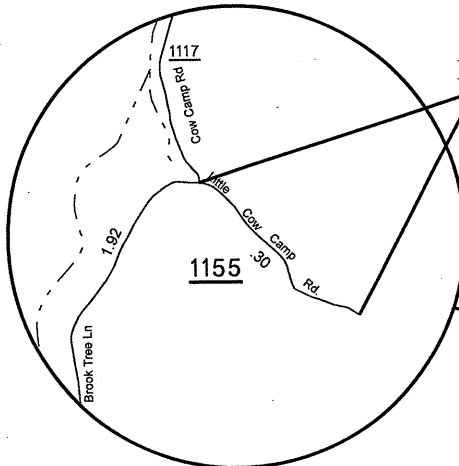
MAP #12 SR 1166  
FROM SR 1186 TO EOM



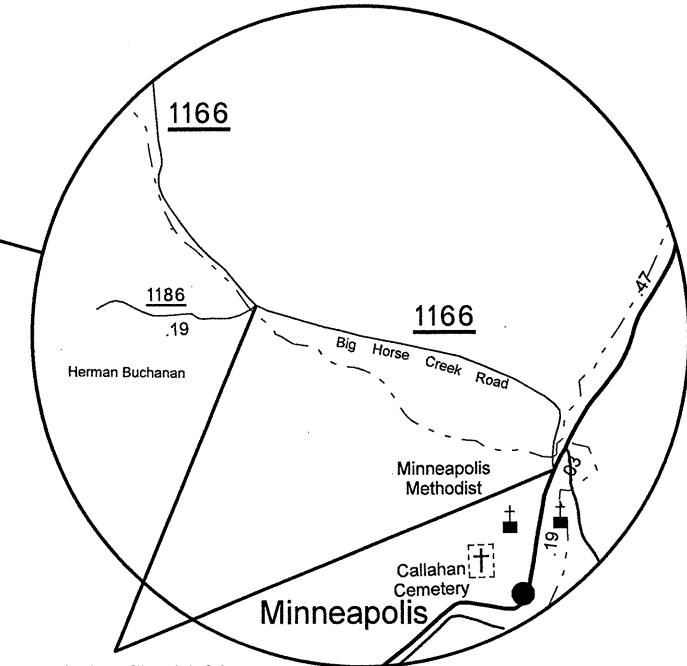
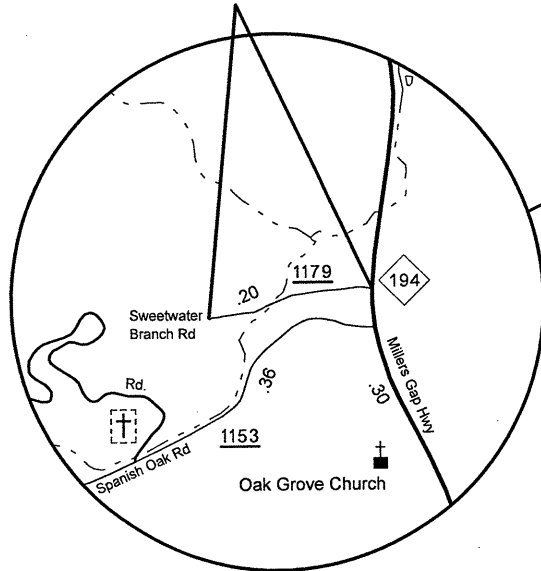
MAP #8 SR 1169  
FROM US 19E TO EOM



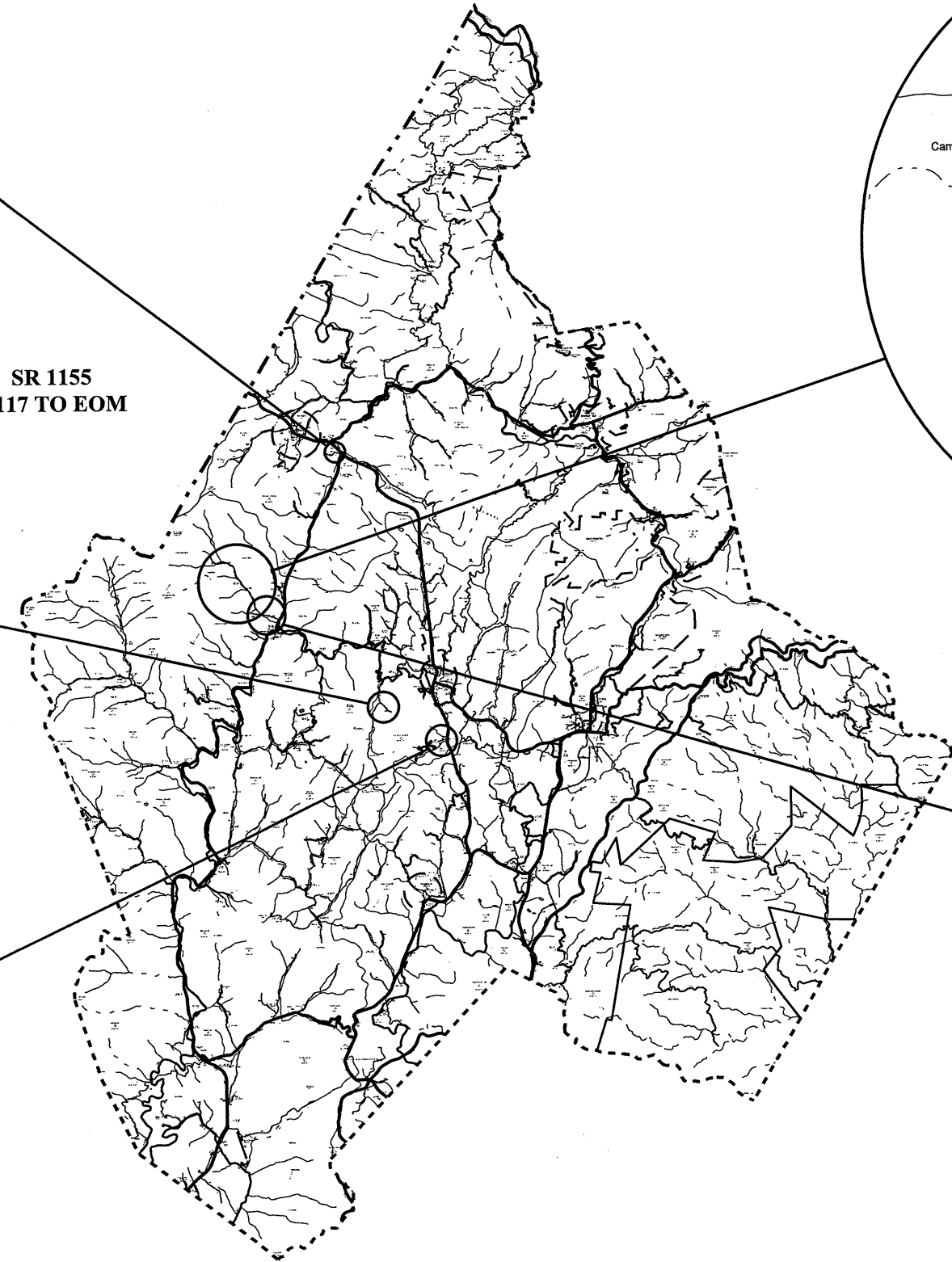
MAP #10 SR 1155  
FROM SR 1117 TO EOM



MAP #9 SR 1179  
FROM NC 194 TO EOM

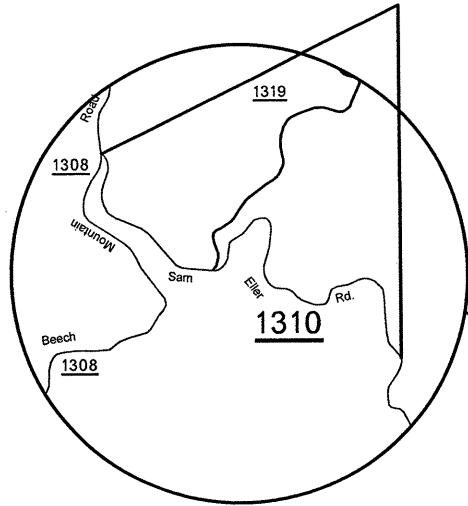


MAP #11 SR 1166  
FROM US 19E TO SR 1186



8/17/99  
04-JAN-2013 14:36 P... Manager\Contracta\Resurfacing\_2013\Dist. 2\_AST\2013 Avery AST Maps.dgn

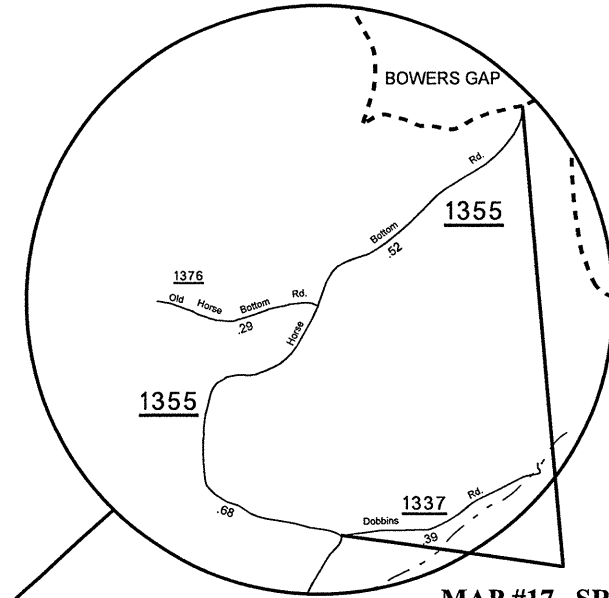
MAP #16 SR 1310  
FROM SR 1308 TO  
END PAVEMENT



STATE OF NORTH CAROLINA  
DIVISION OF HIGHWAYS

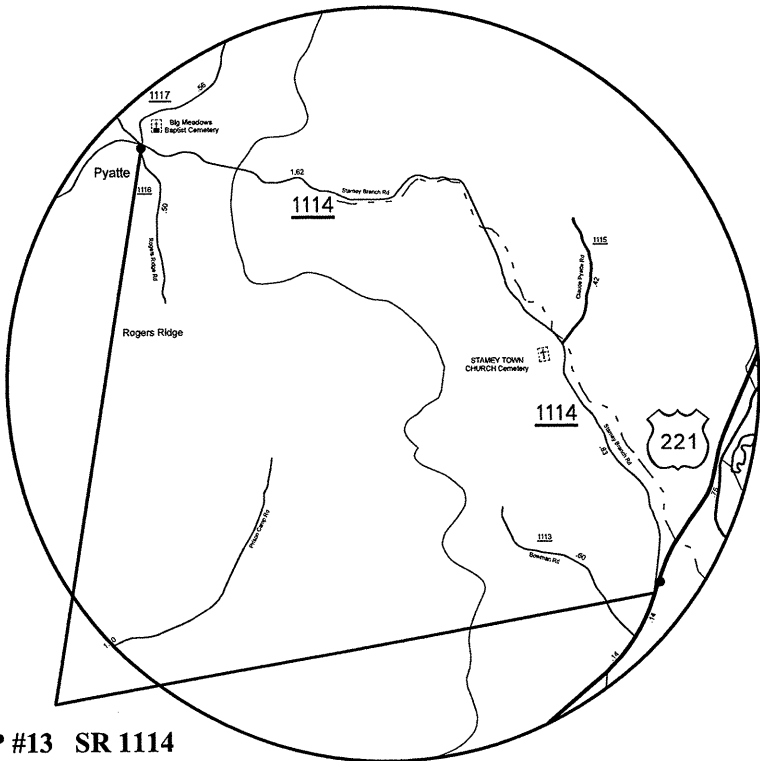
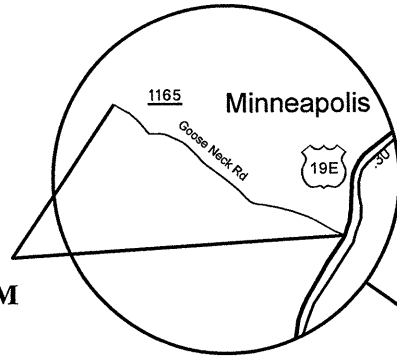
**AVERY COUNTY**

ASPHALT SURFACE TREATMENT

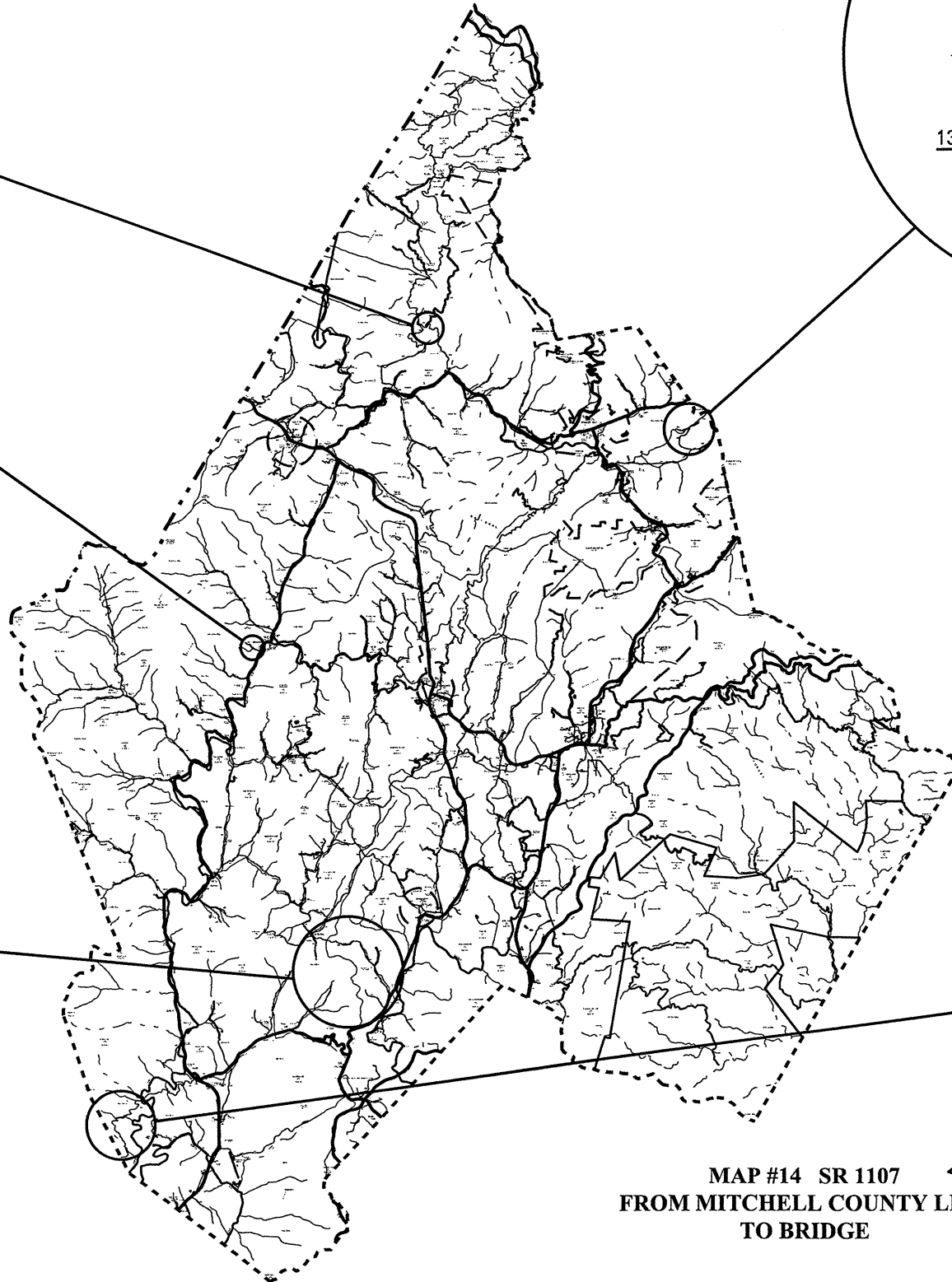


MAP #17 SR 1355  
FROM SR 1337 TO  
WATAUGA COUNTY LINE

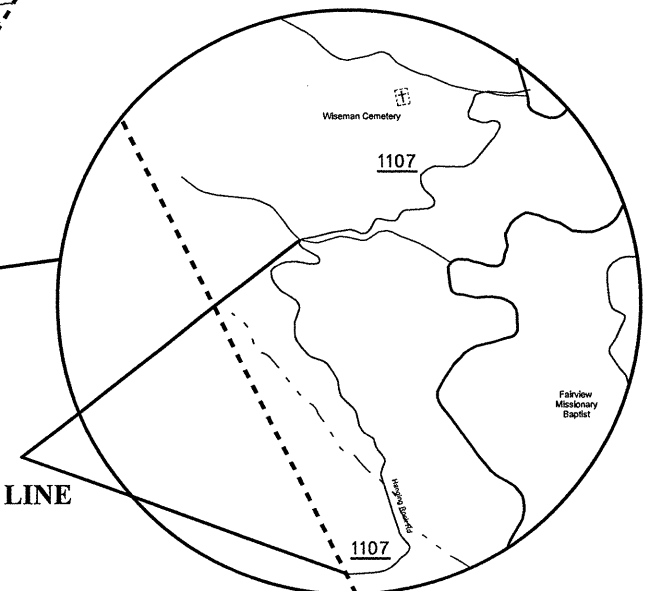
MAP #15 SR 1165  
FROM US 19E TO EOM



MAP #13 SR 1114  
FROM SR 1117 TO US 221

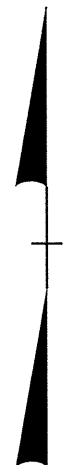


MAP #14 SR 1107  
FROM MITCHELL COUNTY LINE  
TO BRIDGE



8/17/99

C:\M\2013\4136\Project Manager\Contract\Resurfacing 2013\Dist 2 AST\2013 Avery AST Maps.dgn  
 8/17/2013 10:51:06 AM

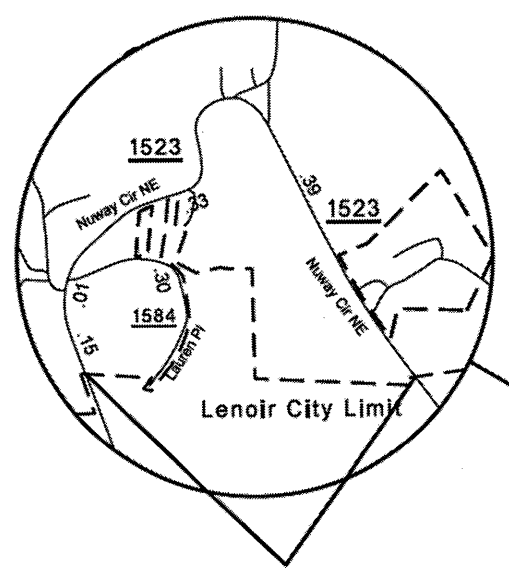


STATE OF NORTH CAROLINA  
DIVISION OF HIGHWAYS

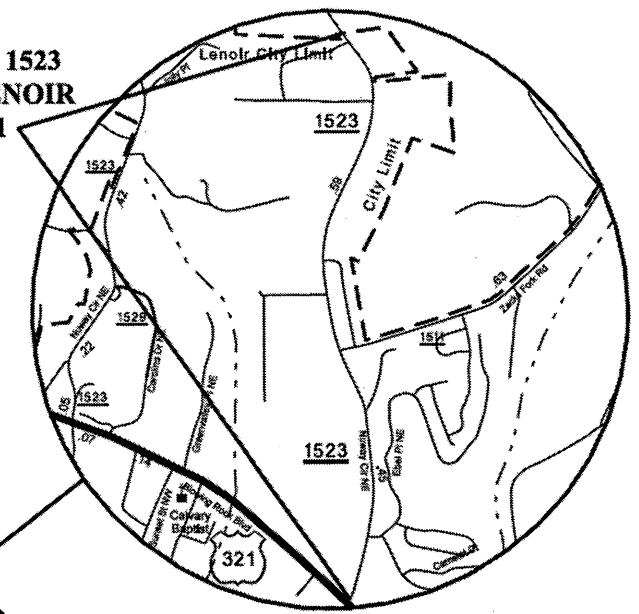
**CALDWELL COUNTY**

ASPHALT SURFACE TREATMENT

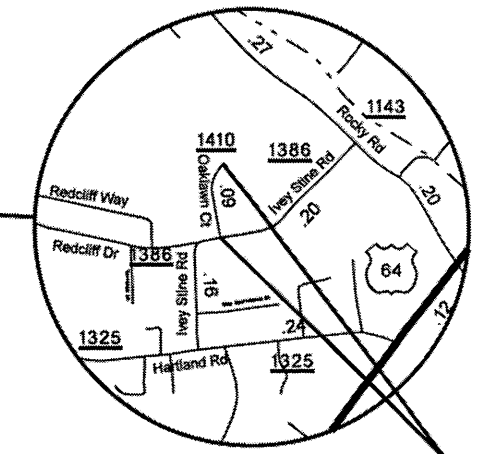
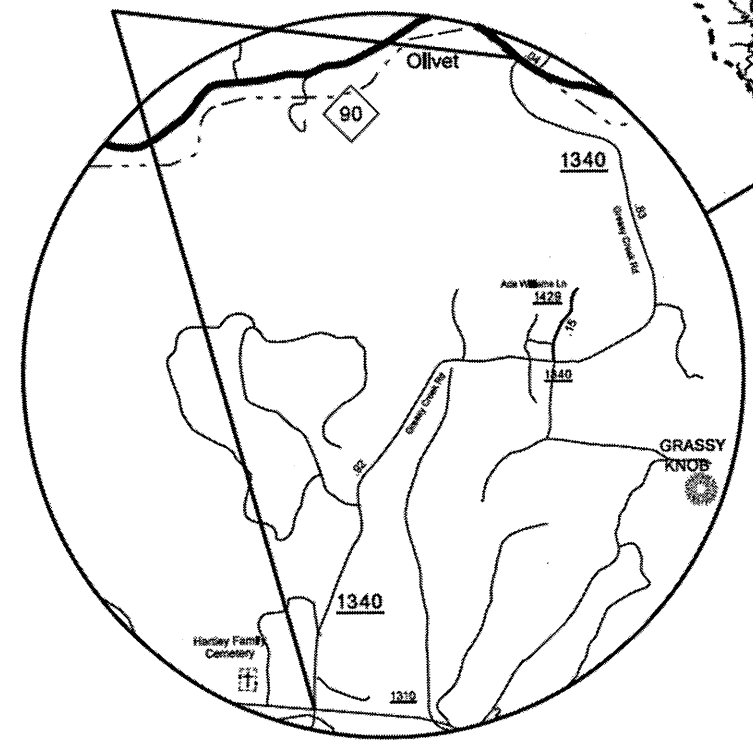
MAP #19 SR 1523  
FROM NCL LENOIR  
TO US 321



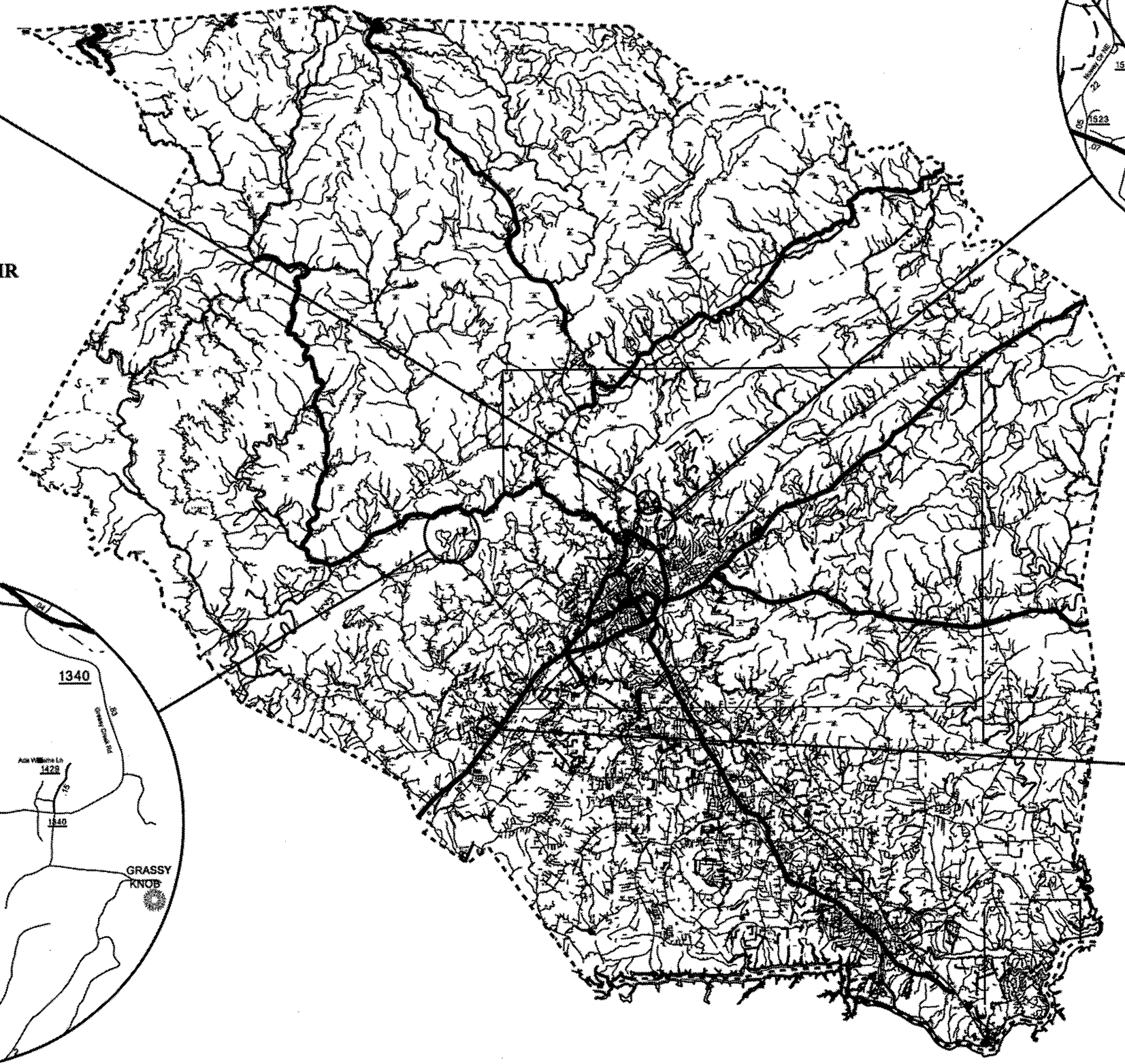
MAP #18 SR 1523  
FROM NCL LENOIR TO NCL LENOIR



MAP #20 SR 1340  
FROM SR 1310 TO NC 90



MAP #21 SR 1410  
FROM SR 1386 TO EOM



8/17/99  
 I:\JAN-2013 0152  
 C:\NW Document  
 Manager\Contractors\Resurfacing 2013\Dist 2 AST\2013 Caldwell AST Maps.dgn  
 1/11/2013 10:52 AM  
 1/11/2013 10:52 AM











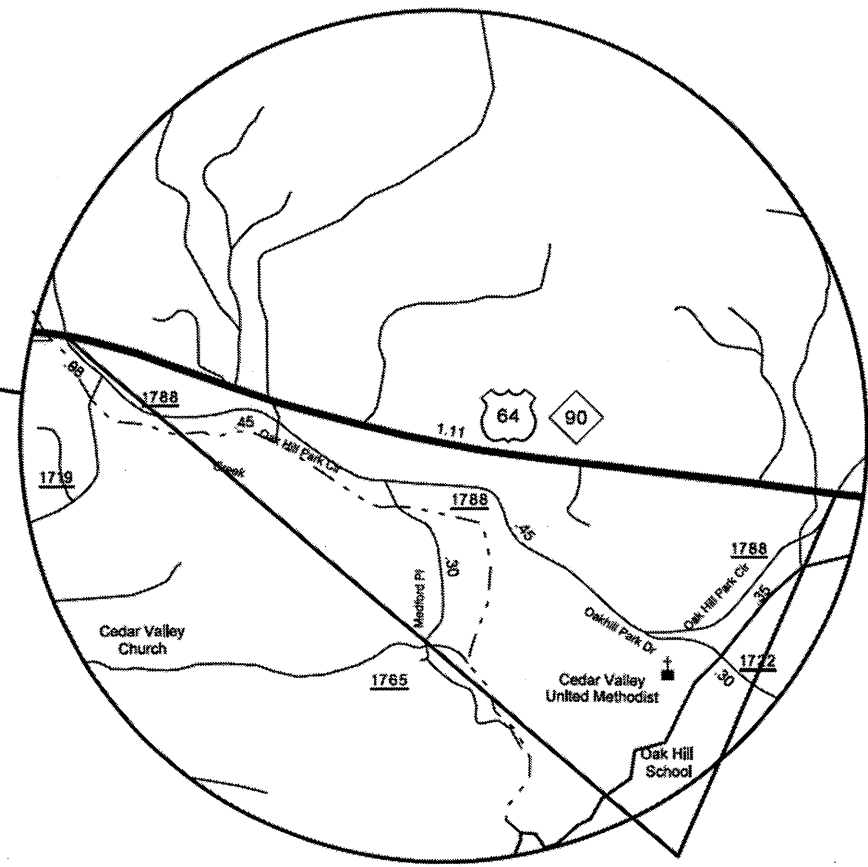
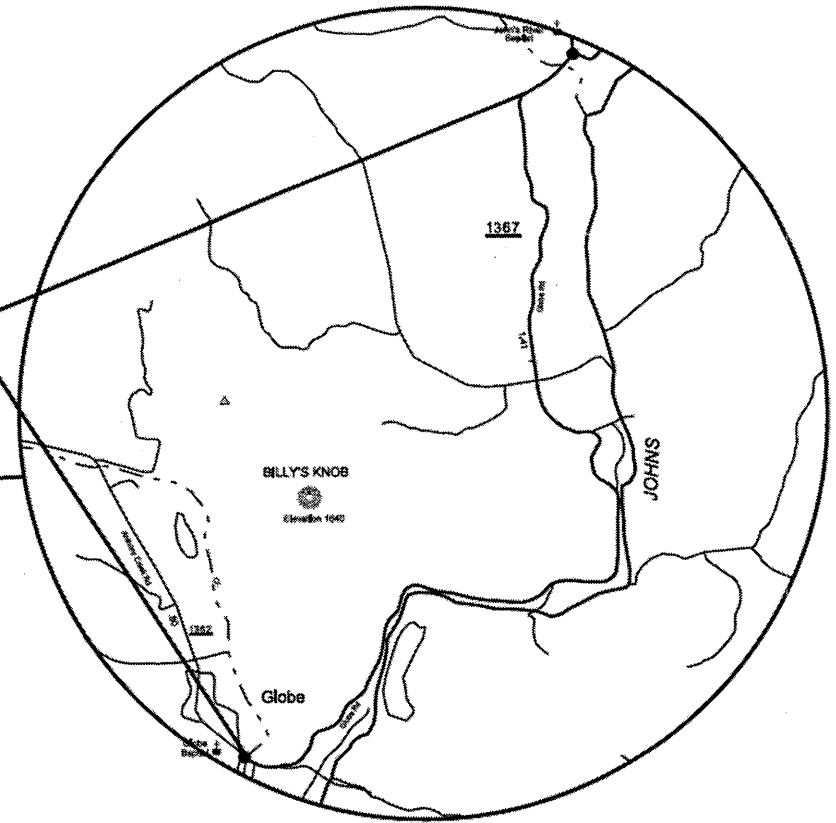


STATE OF NORTH CAROLINA  
DIVISION OF HIGHWAYS

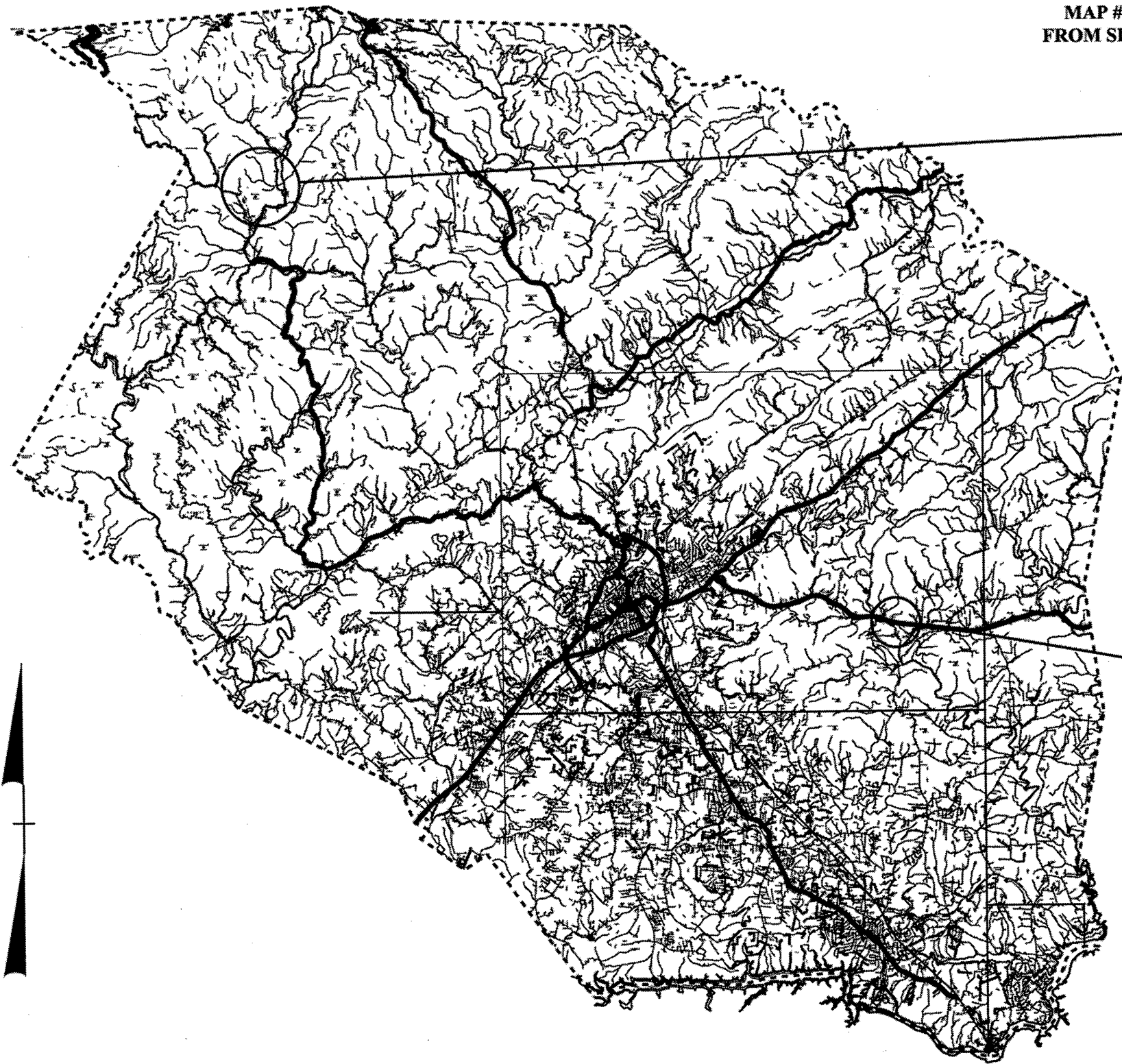
**CALDWELL COUNTY**

ASPHALT SURFACE TREATMENT

MAP #72 SR 1367  
FROM SR 1362 TO EOP



MAP #38 SR 1788  
FROM US 64 TO US 64

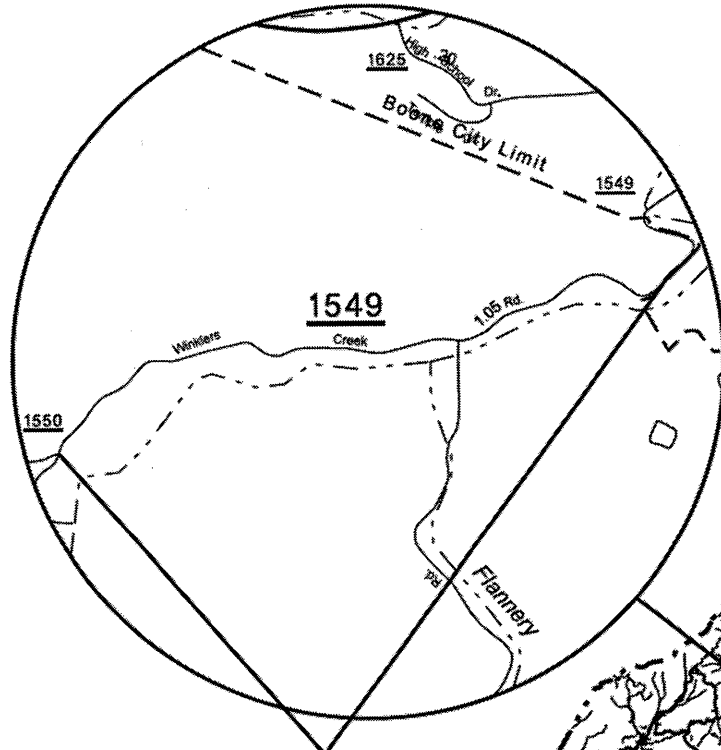


8/17/99  
 I:\JAN-2013 10:53  
 C:\My Documents\15-58-1994  
 Manager\Contractors\Resurfacing 2013\Dist 2 AST\2013 Caldwell AST Map.dgn  
 Last Modified: 12/21/2013

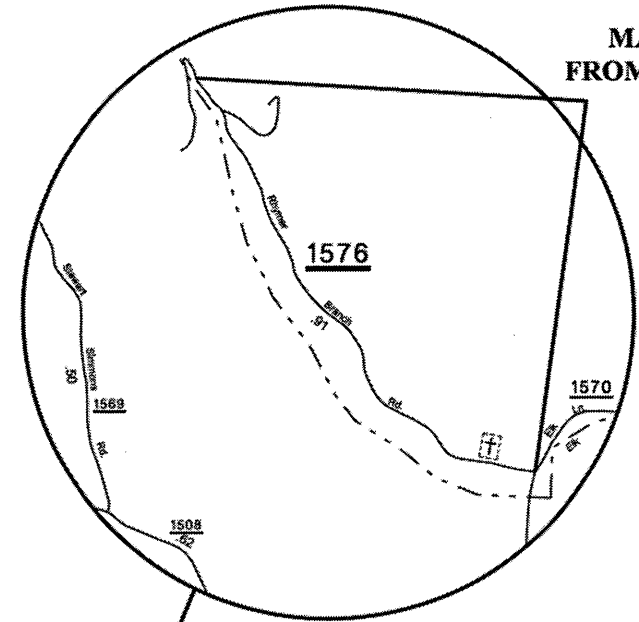
STATE OF NORTH CAROLINA  
DIVISION OF HIGHWAYS

**WATAUGA COUNTY**

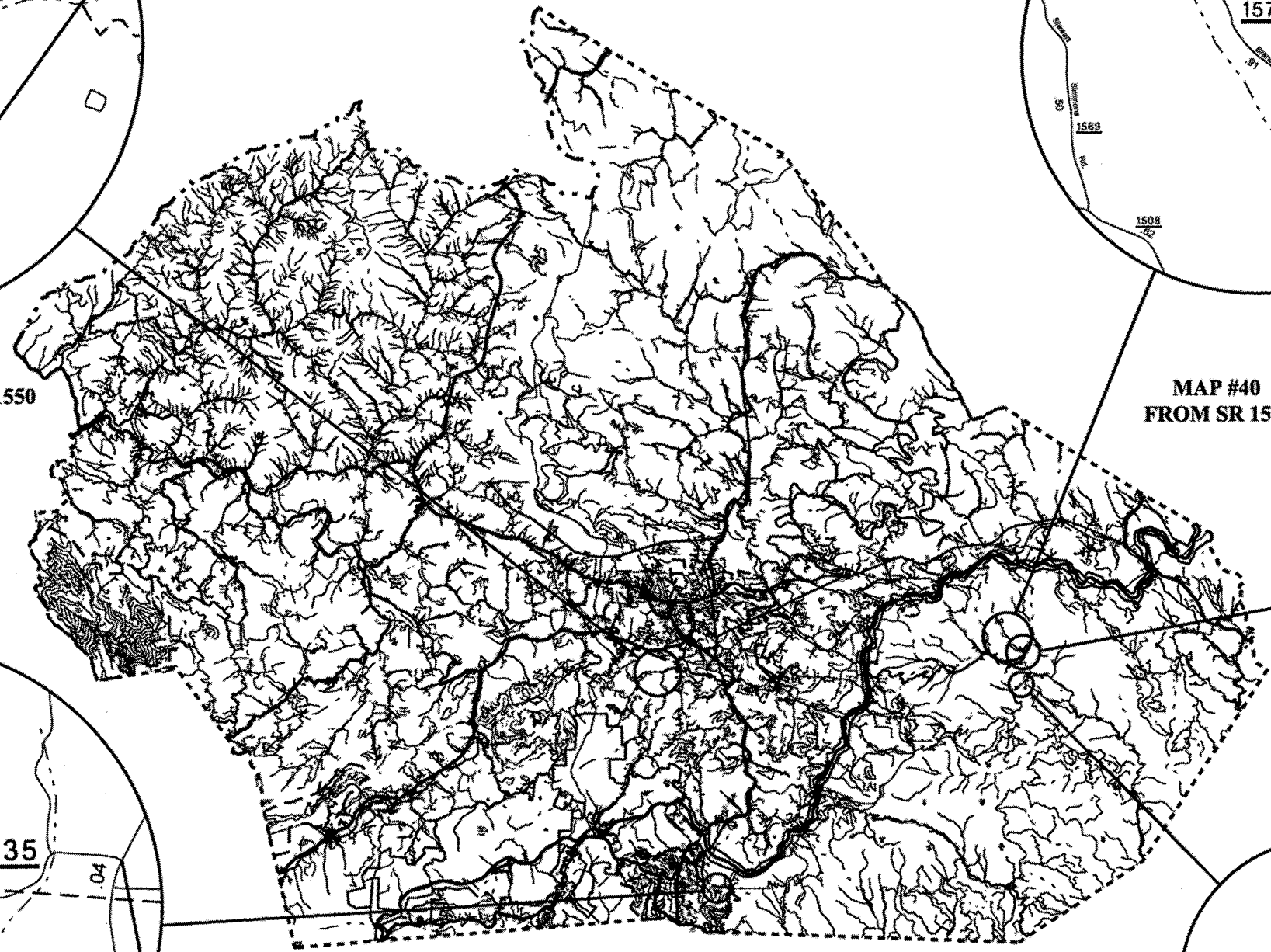
ASPHALT SURFACE TREATMENT



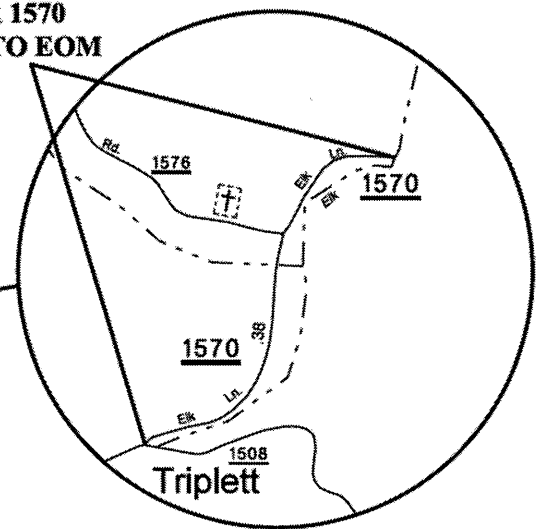
MAP #45 SR 1549  
FROM PAVEMENT CHANGE TO SR 1550



MAP #41 SR 1576  
FROM SR 1570 TO EOM

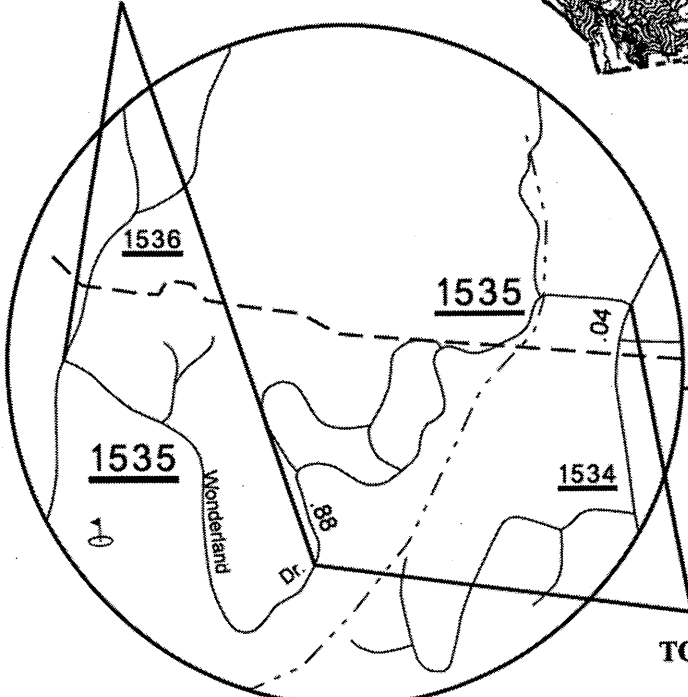


MAP #40 SR 1570  
FROM SR 1508 TO EOM

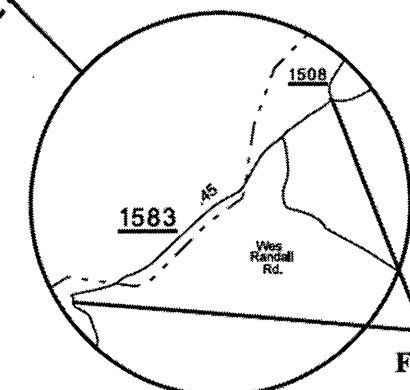


Triplet

MAP #47 SR 1535  
FROM PAVEMENT CHANGE  
TO SR 1536



MAP #46 SR 1535  
FROM SR 1534  
TO PAVEMENT CHANGE



MAP #42 SR 1583  
FROM SR 1508 TO EOM



8/17/99

08-JAN-2013 11:23 AM  
C:\My Documents\Projects\Map\Manager\Contractors\Resurfacing 2013\Dist 2 AST\2013 Watauga AST Mapadgn

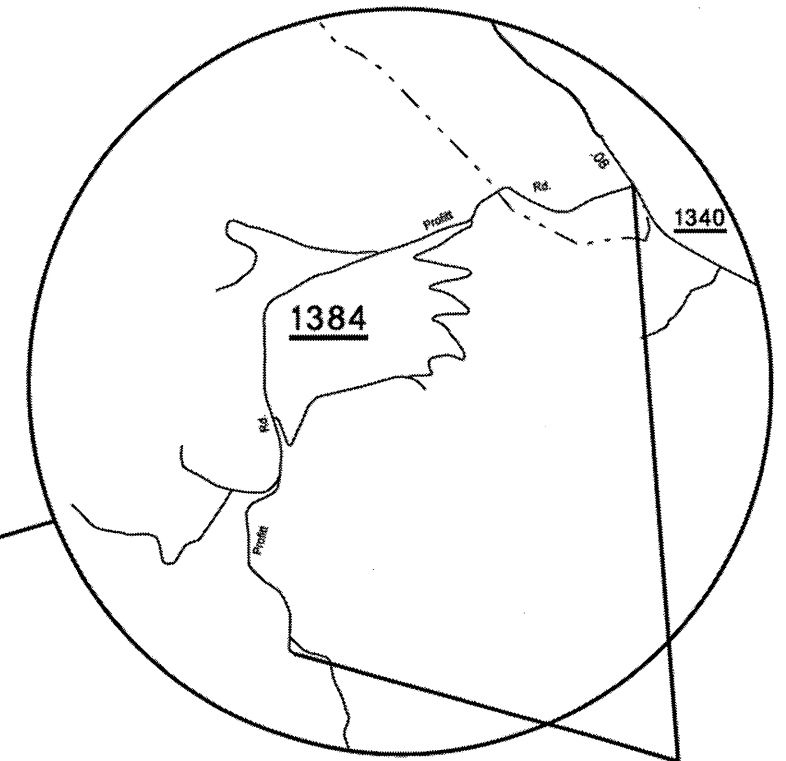
STATE OF NORTH CAROLINA  
DIVISION OF HIGHWAYS

**WATAUGA COUNTY**

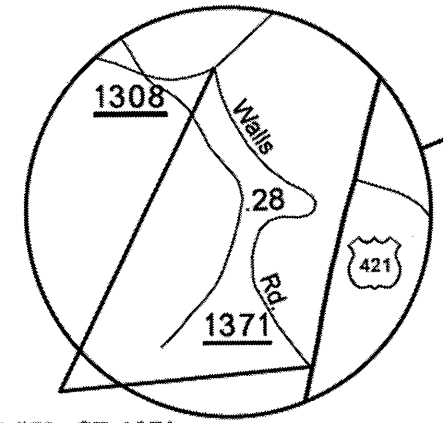
ASPHALT SURFACE TREATMENT



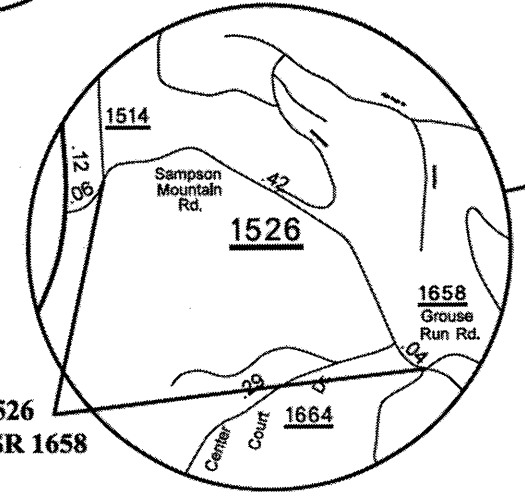
MAP #49 SR 1325  
FROM SR 1324 TO EOM



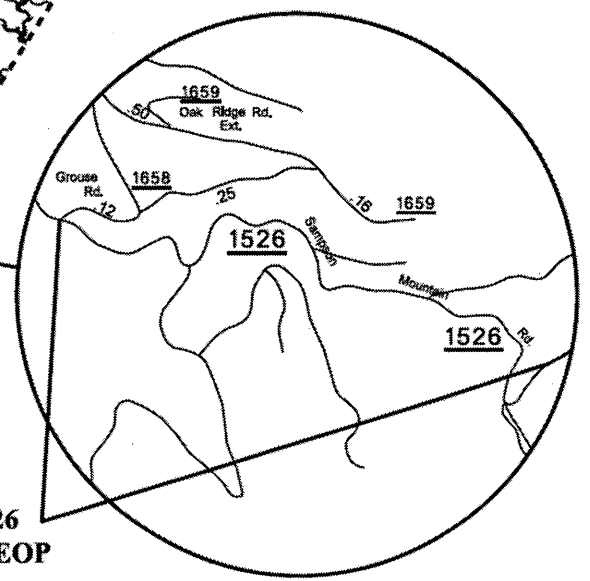
MAP #48 SR 1384  
FROM SR 1340 TO EOM



MAP #50 SR 1371  
FROM SR 1308 TO US 421



MAP #43 SR 1526  
FROM SR 1514 TO SR 1658

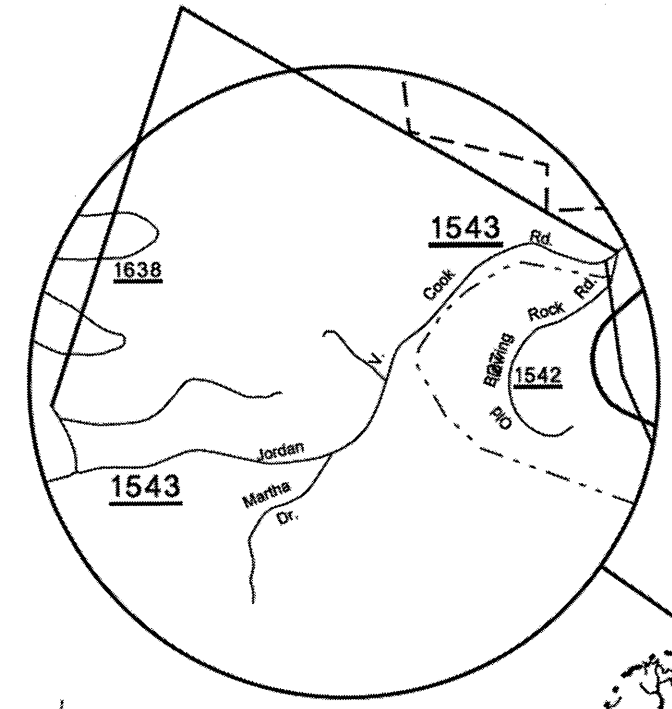


MAP #44 SR 1526  
FROM SR 1658 TO EOP

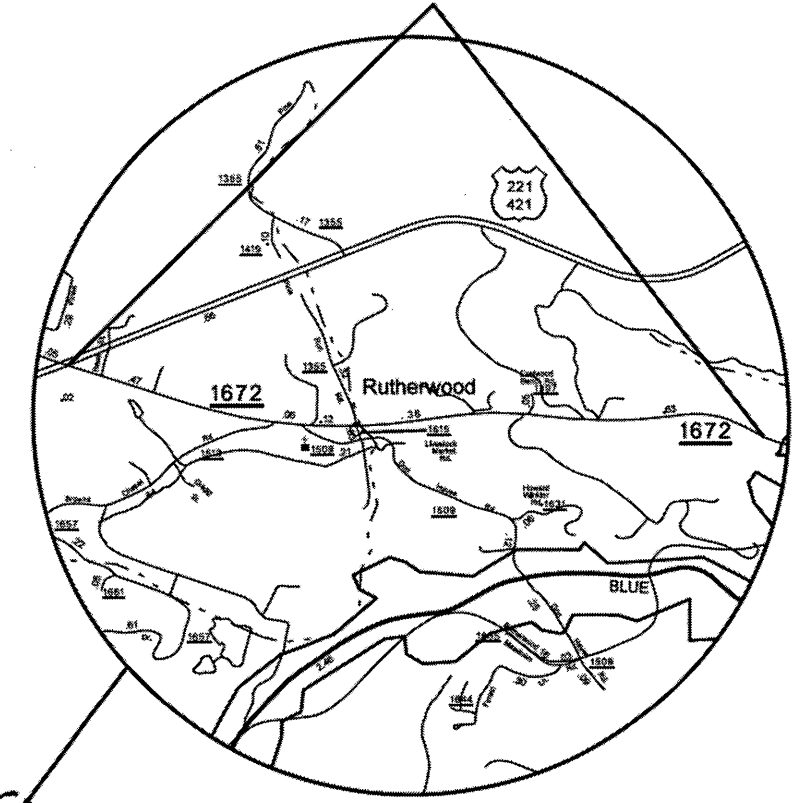


8/17/99  
 09-JAN-2013 14:23  
 C:\N\Documents\Projects\2013\2013 Metauge AST Map\dgn  
 Manager\Contractors\Resurfacing 2013\Dist 2 AST\2013 Metauge AST Map\dgn

MAP #56 SR 1543  
FROM SR 1542 TO EOM



MAP #51 SR 1672  
FROM US 221 TO BEGIN 3-LANE



STATE OF NORTH CAROLINA  
DIVISION OF HIGHWAYS

---

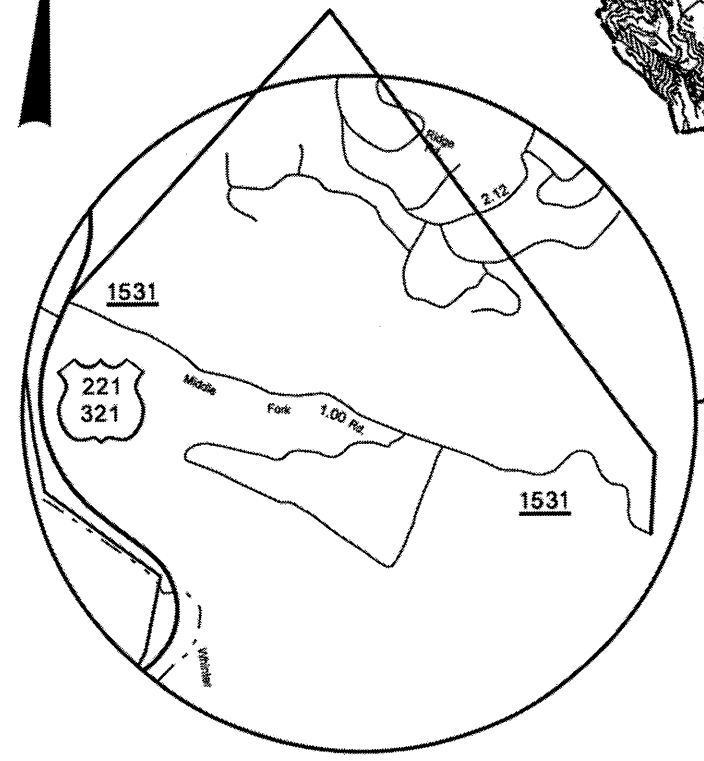
# WATAUGA COUNTY

---

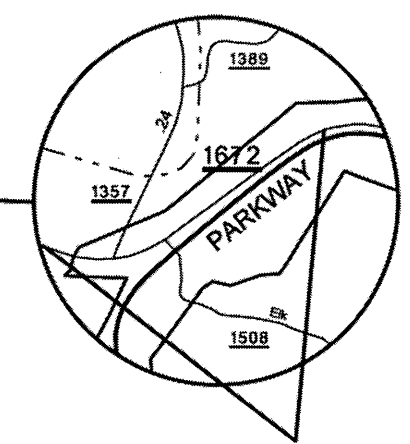
ASPHALT SURFACE TREATMENT



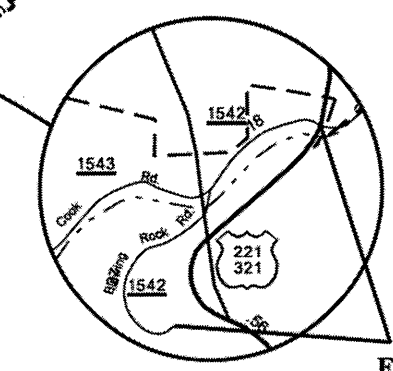
MAP #57 SR 1531  
FROM US 221 TO EOM



MAP #52 SR 1672  
FROM BEGIN 3-LANE  
TO END 3-LANE



MAP #55 SR 1542  
FROM US 321 TO EOM



8/17/99

09-MAR-2013 12:23  
 C:\My Documents\Projects\2013\Dist 2 AST\2013 Watauga AST Mapadgn



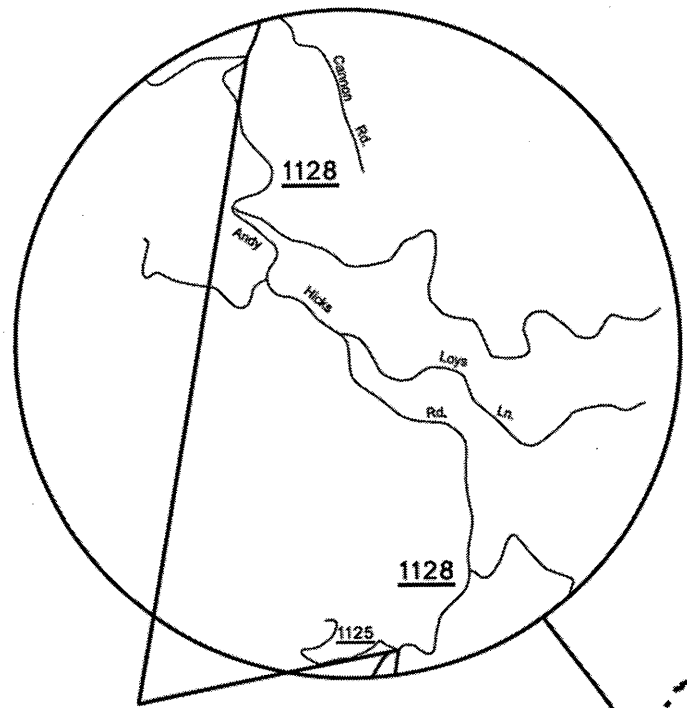


STATE OF NORTH CAROLINA  
DIVISION OF HIGHWAYS

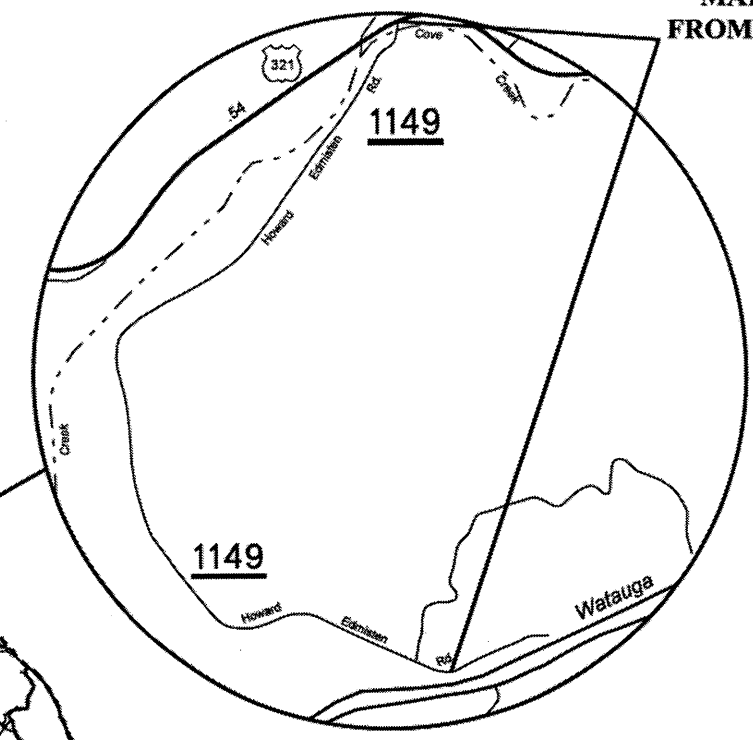
**WATAUGA COUNTY**

ASPHALT SURFACE TREATMENT

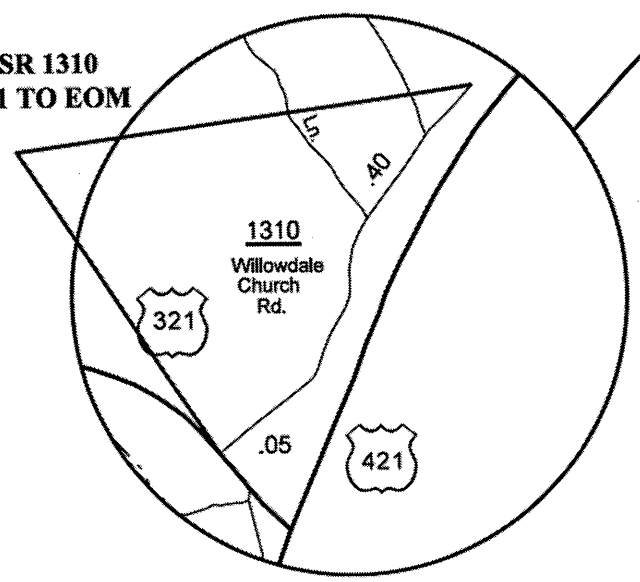
MAP #61 SR 1149  
FROM US 321 TO EOM



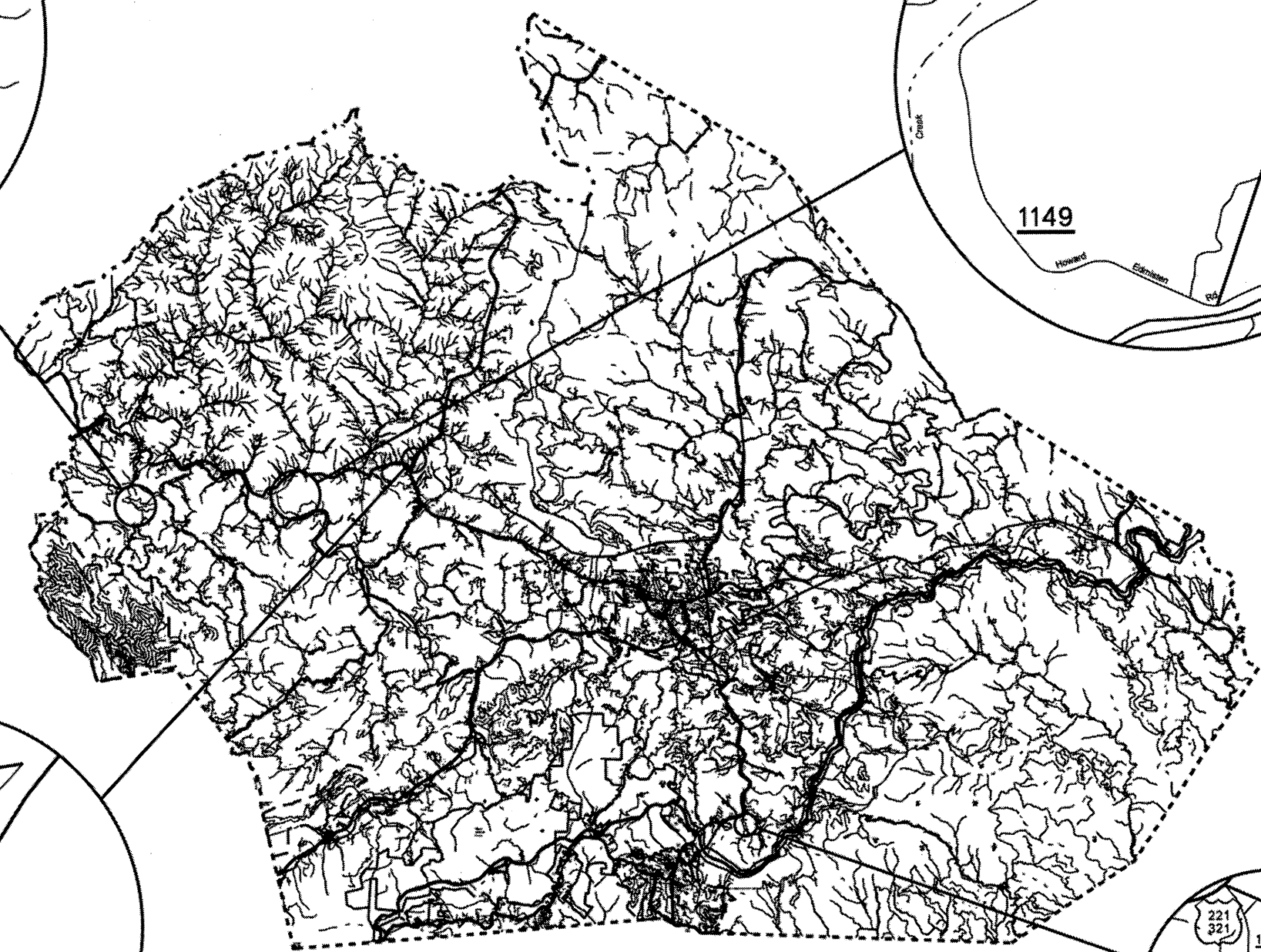
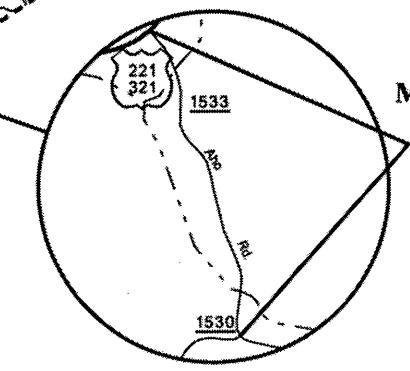
MAP #62 SR 1128  
FROM BEGIN PAVEMENT  
TO SR 1125



MAP #65 SR 1533  
FROM US 321  
TO SR 1530



MAP #60 SR 1310  
FROM US 321 TO EOM

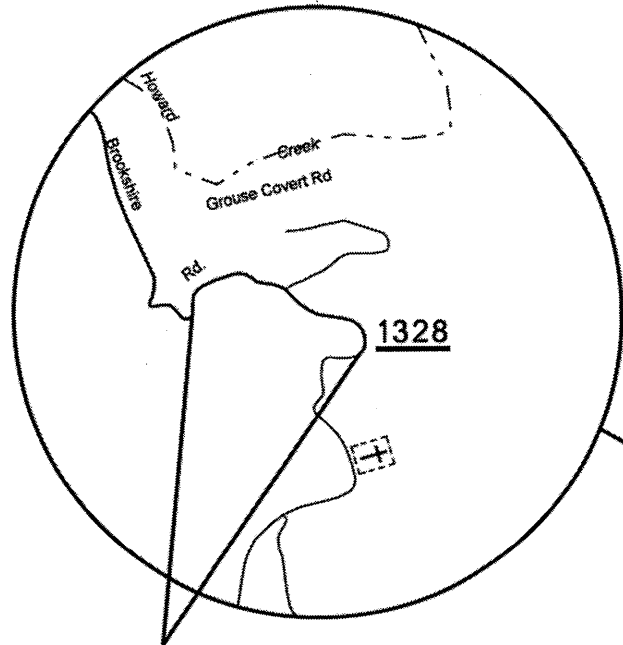


8/17/99  
C:\msd2013\224\p22\1061 Manager\Contractors\Resurfacing 2013\Dist 2 AST\2013 Watauga AST Mapadgn

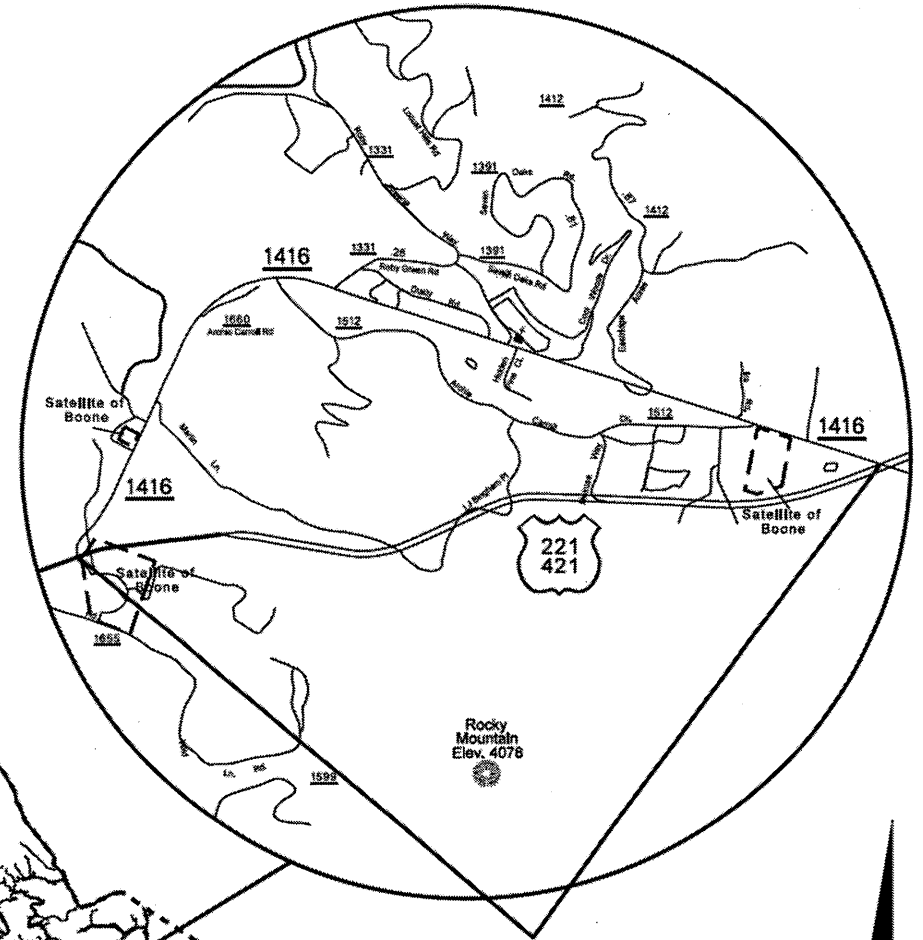
STATE OF NORTH CAROLINA  
DIVISION OF HIGHWAYS

**WATAUGA COUNTY**

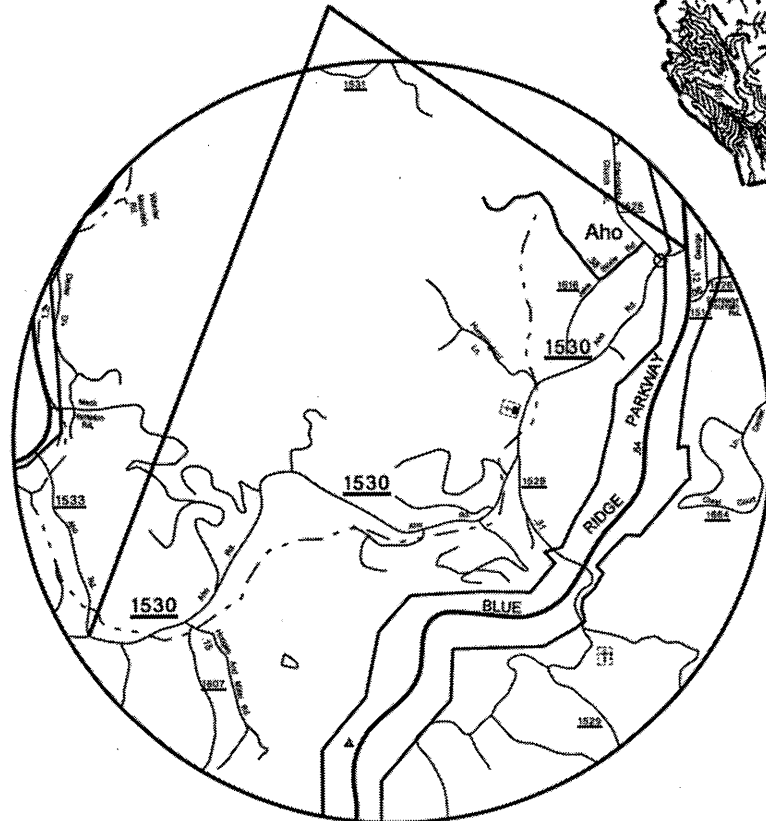
ASPHALT SURFACE TREATMENT



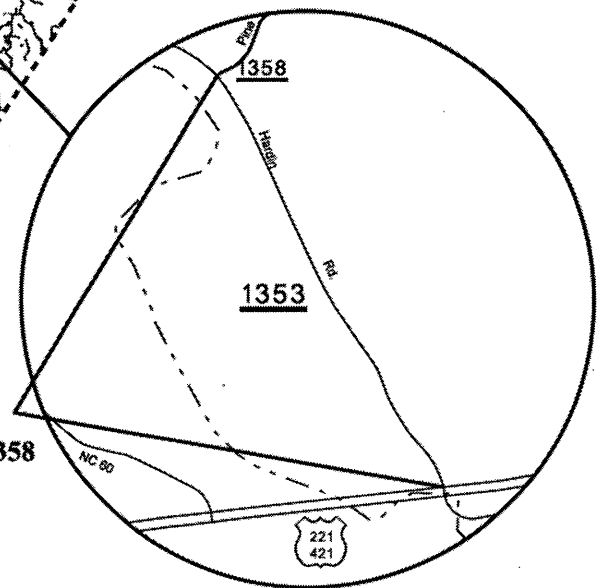
MAP #71 SR 1328  
FROM PAVEMENT CHANGE  
TO EOP



MAP #63 SR 1416  
FROM US 221 TO US 221



MAP #64 SR 1530  
FROM BLUE RIDGE PKWY  
TO SR 1533



MAP #69 SR 1353  
FROM US 421 TO SR 1358



8/17/99

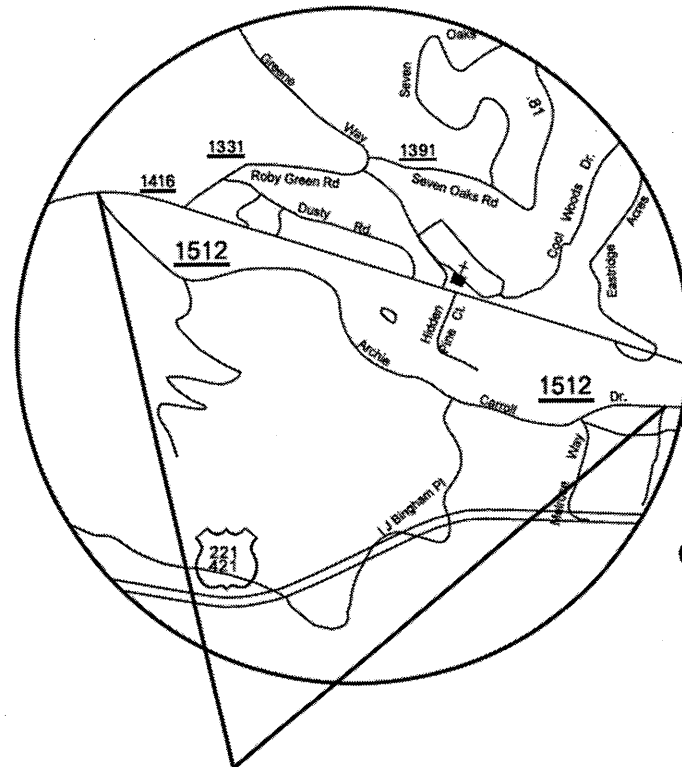
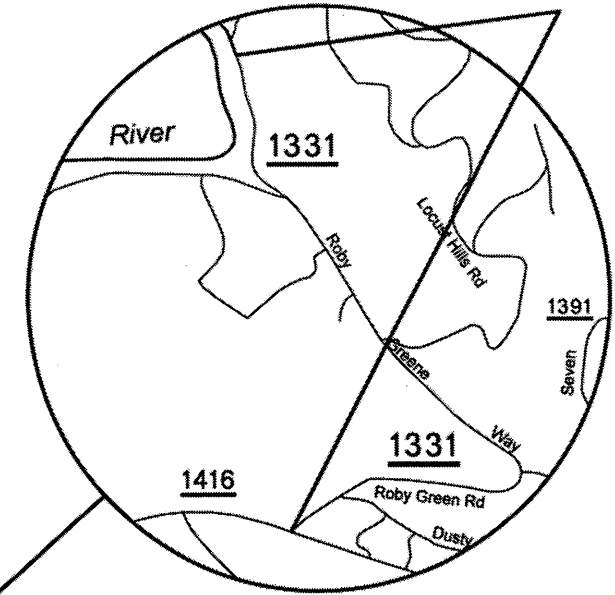
CR-MH-2013-124  
C:\Users\mcc\Documents\Projects\2013\2013 Metrauge AST Mapadgn  
Manager\Contractors\Resurfacing 2013\Dist 2 AST\2013 Metrauge AST Mapadgn

STATE OF NORTH CAROLINA  
DIVISION OF HIGHWAYS

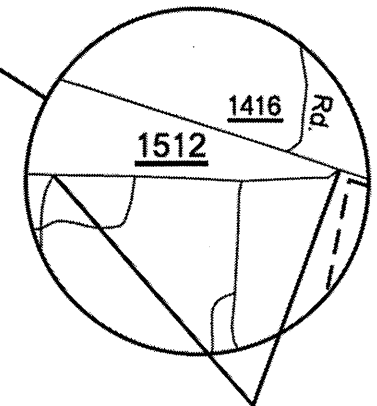
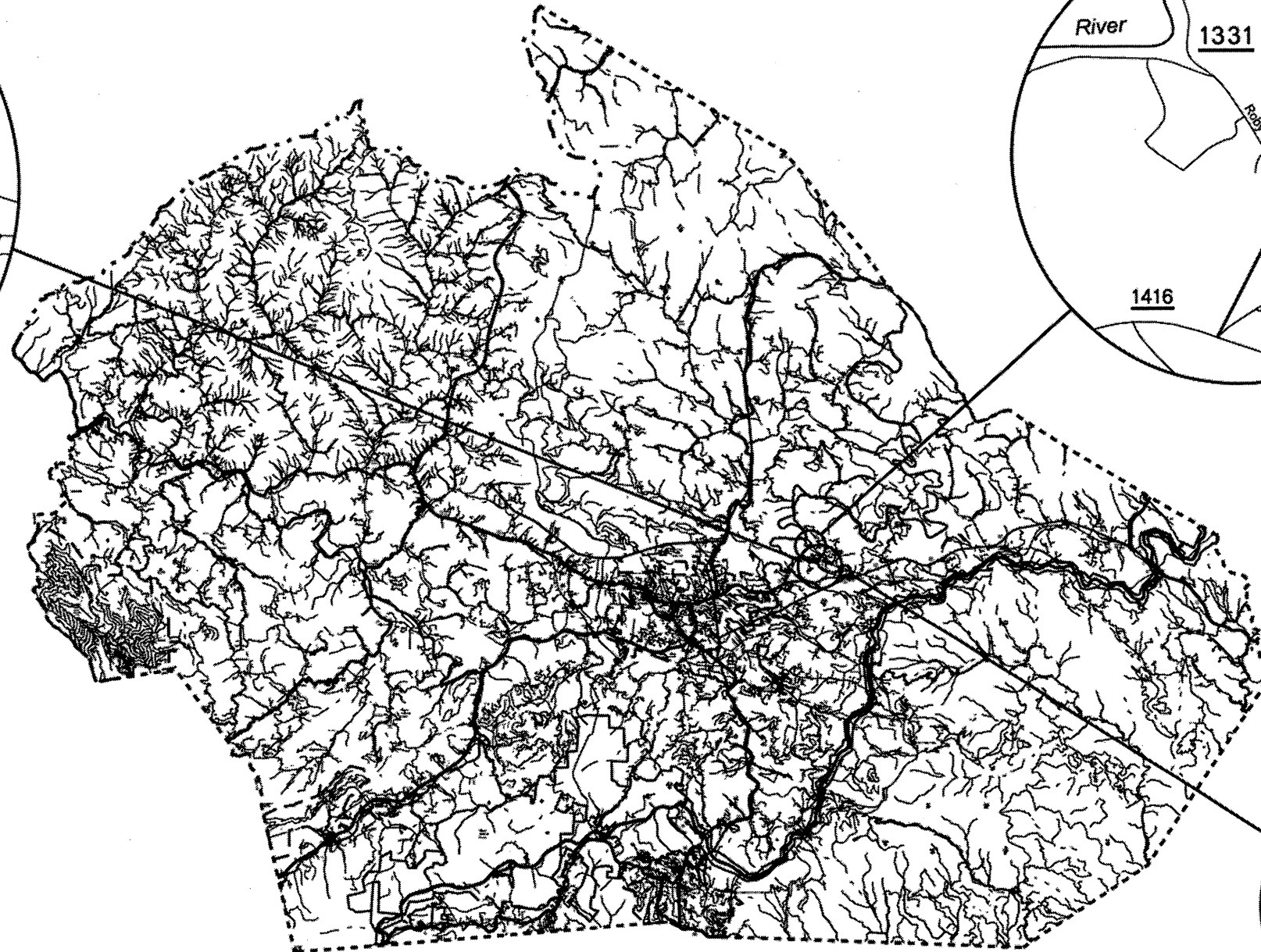
**WATAUGA COUNTY**

ASPHALT SURFACE TREATMENT

MAP #67 SR 1331  
FROM EOP TO SR 1416



MAP #68 SR 1512  
FROM SR 1416 TO  
PAVEMENT CHANGE



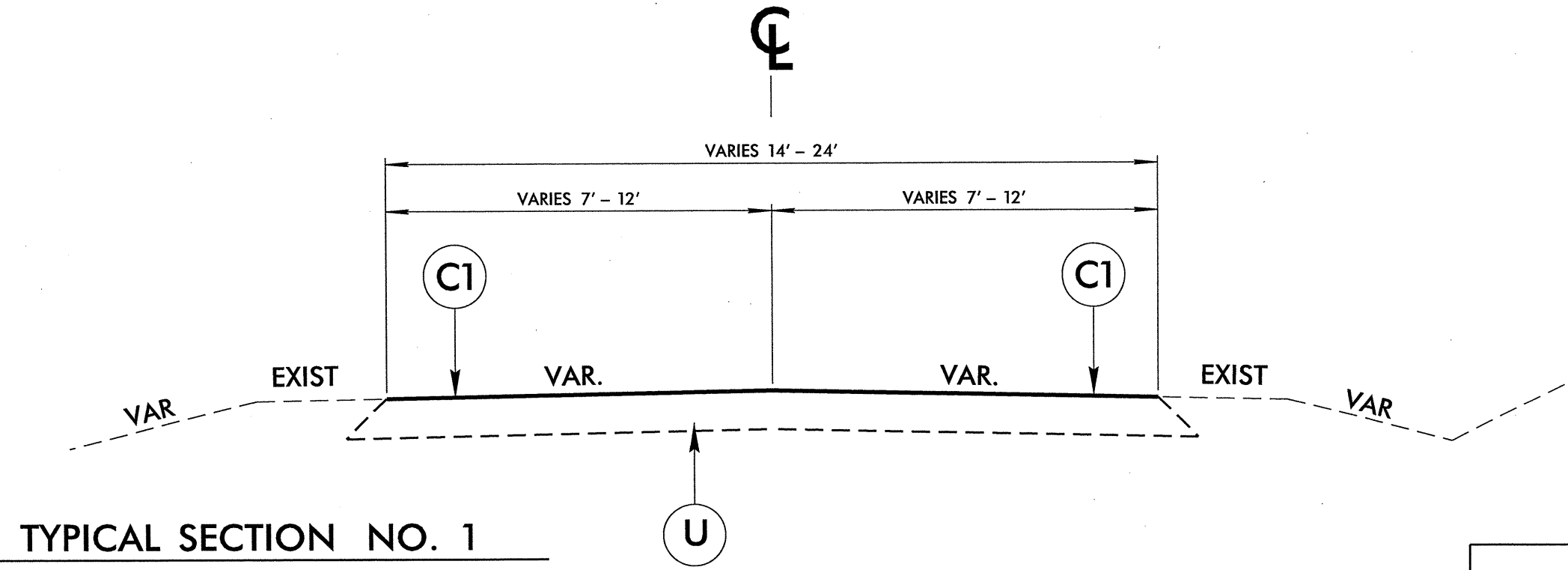
MAP #70 SR 1512  
FROM PAVEMENT CHANGE  
TO SR 1416



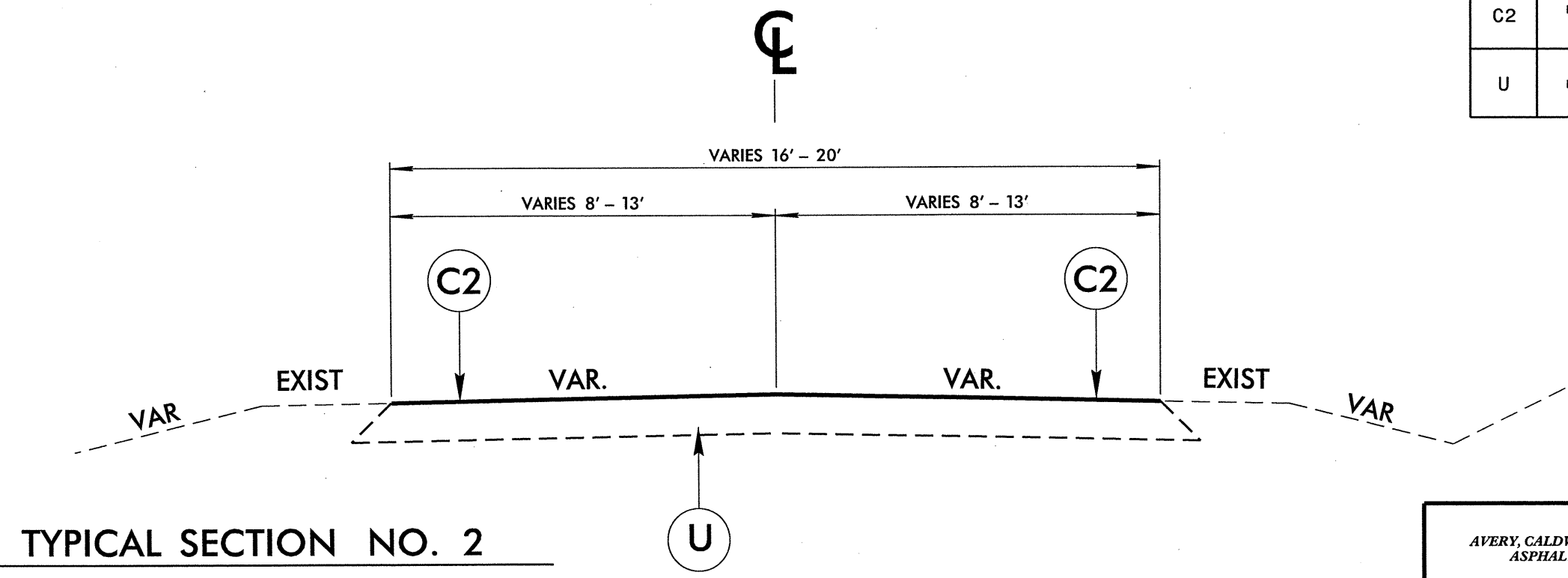
8/17/99

C:\Users\jw24\Documents\Projects\2013\Dist 2 AST\2013 Watauga AST Maps.dgn  
 08/17/2013 12:24 PM  
 User: jw24



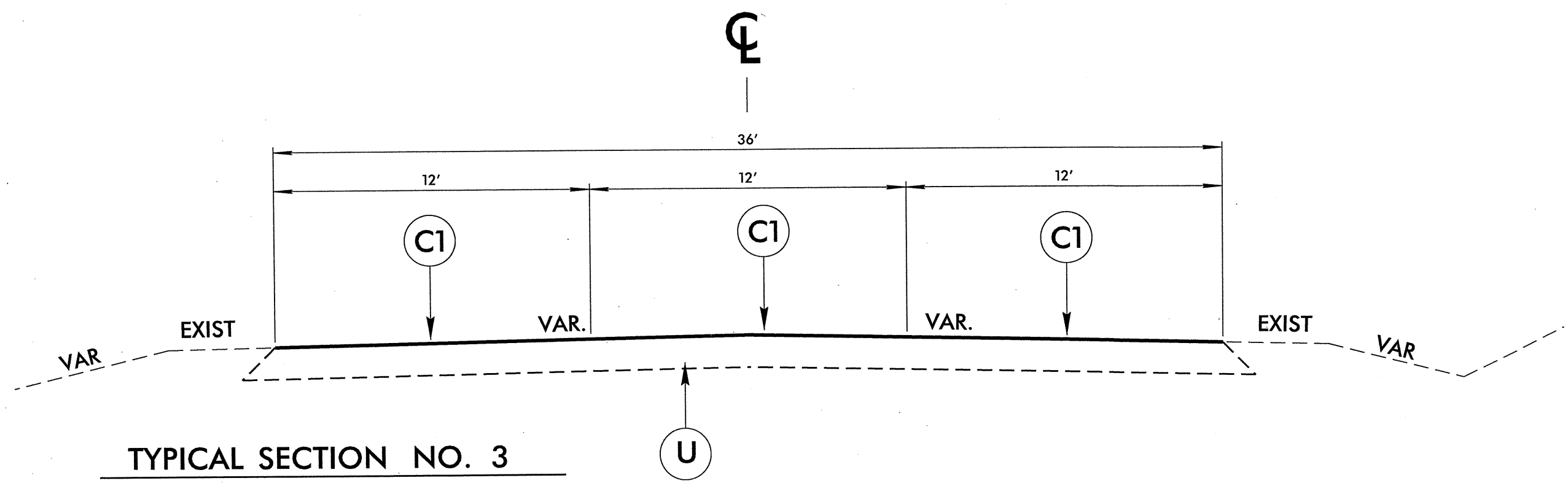


PAVEMENT SCHEDULE	
C1	PROP. ASPHALT SURFACE TREATMENT, TRIPLE SEAL
C2	PROP. ASPHALT SURFACE TREATMENT, TRIPLE SEAL (LIGHTWEIGHT AGGREGATE)
U	EXISTING PAVEMENT



AVERY, CALDWELL, & WATAUGA COUNTIES ASPHALT SURFACE TREATMENT RESURFACING		
DIVISION II		
REVISIONS	INIT.	DATE
N.C. DEPARTMENT of TRANSPORTATION DIVISION of HIGHWAYS DIVISION ELEVEN		SCALE: N/A    DATE: 12/2012 PREPARED BY: J. L. LAWS REVIEWED BY: REVIEWED BY:

8/17/99



PAVEMENT SCHEDULE	
C1	PROP. ASPHALT SURFACE TREATMENT, TRIPLE SEAL
C2	PROP. ASPHALT SURFACE TREATMENT, TRIPLE SEAL (LIGHTWEIGHT AGGREGATE)
U	EXISTING PAVEMENT

<b>AVERY, CALDWELL, &amp; WATAUGA COUNTIES</b> ASPHALT SURFACE TREATMENT RESURFACING			
DIVISION II			
REVISIONS	INIT.	DATE	SCALE: N/A    DATE: 12/2012 PREPARED BY: J. L. LAWS REVIEWED BY: REVIEWED BY:
N.C. DEPARTMENT of TRANSPORTATION DIVISION of HIGHWAYS DIVISION ELEVEN			

PROJECT NO.	SHEET NO.	TOTAL NO.
11CR.20061.20, ETC.	19	

### SUMMARY OF QUANTITIES

PROJECT NO	COUNTY	MAP NO	ROUTE	DESCRIPTION	TYP	FINAL SURFACE TESTING REQUIRED	LENGTH MI	WIDTH FT	ASPHALT SURFACE TREATMENT, TRIPLE SEAL SY	ASPHALT SURFACE TREATMENT, TRIPLE SEAL (LIGHTWEIGHT AGGREGATE) SY
11CR.20061.20	Avery	1	SR 1158	FROM SR 1157 TO EOM	1	NO	1.1	16	10,325	
		2	SR 1524	FROM US 221 TO US 221	1	NO	1.02	14	8,378	
		3	SR 1137	FROM US 19E TO EOM	1	NO	0.6	18	6,336	
		4	SR 1373	FROM SR 1313 TO DEAD END	1	NO	0.13	16	1,220	
		5	SR 1161	FROM NC 194 TO DEAD END	1	NO	1.05	18	11,088	
		6	SR 1503	FROM US 221 TO BRIDGE	1	NO	0.5	16	4,693	
		7	SR 1528	FROM BEGIN PAVEMENT TO SR 1518	1	NO	0.92	18	9,715	
		8	SR 1169	FROM US 19E TO EOM	1	NO	0.4	16	3,755	
		9	SR 1179	FROM NC 194 TO EOM	1	NO	0.4	16	3,755	
		10	SR 1155	FROM SR 1117 TO EOM	1	NO	0.3	18	3,168	
		11	SR 1166	FROM US 19E TO SR 1186	1	NO	0.49	16	4,600	
		12	SR 1166	FROM SR 1186 TO EOM	1	NO	1.75	16	16,427	
		13	SR 1114	FROM SR 1117 TO US 221	1	NO	2.46	17	24,534	
		14	SR 1107	FROM MITCHELL COUNTY LINE TO BRIDGE	1	NO	2.12	18	22,387	
		15	SR 1165	FROM US 19E TO EOM	1	NO	0.39	16	3,661	
		16	SR 1310	FROM SR 1308 TO END PAVEMENT	1	NO	0.69	18	7,286	
		17	SR 1355	FROM SR 1337 TO WATAUGA COUNTY LINE	1	NO	1.2	20	14,080	
<b>TOTAL FOR PROJ NO. 11CR.20061.20</b>							<b>15.52</b>		<b>155,408</b>	

PROJECT NO	COUNTY	MAP NO	ROUTE	DESCRIPTION	TYP	FINAL SURFACE TESTING REQUIRED	LENGTH MI	WIDTH FT	ASPHALT SURFACE TREATMENT, TRIPLE SEAL SY	ASPHALT SURFACE TREATMENT, TRIPLE SEAL (LIGHTWEIGHT AGGREGATE) SY
11CR.20141.20	Caldwell	18	SR 1523	FROM NCL LENOIR TO NCL LENOIR	2	NO	0.82	20		9,621
		19	SR 1523	FROM NCL LENOIR TO US 321	2	NO	0.77	20		9,035
		20	SR 1340	FROM SR 1310 TO NC 90	2	NO	1.75	20		20,533
		21	SR 1410	FROM SR 1386 TO EOM	2	NO	0.09	20		1,056
		22	SR 1386	FROM SR 1143 TO SR 1325	2	NO	0.37	20		4,341
		23	SR 1591	FROM SR 1571 TO EOM	2	NO	0.39	18		4,118
		24	SR 1571	FROM SR 1552 TO EOM	2	NO	0.35	18		3,696
		25	SR 1760	FROM US 321 TO SR 1777	2	NO	0.2	18		2,112
		26	SR 1776	FROM SR 1778 TO EOM	2	NO	0.2	16		1,877
		27	SR 1777	FROM SR 1778 TO EOM	2	NO	0.29	16		2,722
		28	SR 1778	FROM SR 1776 TO SR 1777	2	NO	0.1	16		939
		29	SR 1401	FROM SR 1316 TO EOM	2	NO	0.39	18		4,118
		30	SR 1416	FROM SR 1303 TO EOM	2	NO	0.36	18		3,802
		31	SR 1417	FROM SR 1310 TO EOM	2	NO	0.35	16		3,285
		32	SR 1362	FROM SR 1361 TO SR 1367	2	NO	1.34	20		15,723
		33	SR 1718	FROM SR 1748 TO SR 1844	2	NO	0.83	20		9,739
		34	SR 1718	FROM SR 1844 TO SR 1770	2	NO	1.24	20		14,549
		35	SR 1320	FROM SR 1387 TO SR 1190	2	NO	0.73	18		7,709
		36	SR 1380	FROM SR 1387 TO SR 1320	2	NO	0.51	18		5,386
		37	SR 1706	FROM NC 18 TO NC 18	2	NO	2.03	20		23,819
		38	SR 1788	FROM US 64 TO US 64	2	NO	1.34	18		14,150
		39	SR 1328	FROM SR 1327 TO SR 1327	2	NO	0.93	20		10,912
<b>TOTAL FOR PROJ NO. 11CR.20141.20</b>							<b>15.38</b>		<b>173,242</b>	

PROJECT NO.	SHEET NO.	TOTAL NO.
11CR.20061.20, ETC.	20	

**SUMMARY OF QUANTITIES**

PROJECT NO	COUNTY	MAP NO	ROUTE	DESCRIPTION	TYP	FINAL SURFACE TESTING REQUIRED	LENGTH MI	WIDTH FT	ASPHALT SURFACE TREATMENT, TRIPLE SEAL SY	ASPHALT SURFACE TREATMENT, TRIPLE SEAL (LIGHTWEIGHT AGGREGATE) SY
11CR.20951.20	Watauga	40	SR 1570	FROM SR 1508 TO EOM	1	NO	0.7	18	7,392	
		41	SR 1576	FROM SR 1570 TO EOM	1	NO	0.91	16	8,542	
		42	SR 1583	FROM SR 1508 TO EOM	1	NO	0.46	16	4,318	
		43	SR 1526	FROM SR 1514 TO SR 1658	1	NO	0.46	20	5,397	
		44	SR 1526	FROM SR 1658 TO EOP	1	NO	0.86	18	9,082	
		45	SR 1549	FROM PAVEMENT CHANGE TO SR 1550	1	NO	1.46	20	17,131	
		46	SR 1535	FROM SR 1534 TO PAVEMENT CHANGE	1	NO	0.58	18	6,125	
		47	SR 1535	FROM PAVEMENT CHANGE TO SR 1536	1	NO	0.33	18	3,485	
		48	SR 1384	FROM SR 1340 TO EOM	1	NO	1.18	16	11,076	
		49	SR 1325	FROM SR 1324 TO EOM	1	NO	1.37	18	14,467	
		50	SR 1371	FROM SR 1308 TO US 421	1	NO	0.29	18	3,062	
		51	SR 1672	FROM US 221 TO BEGIN 3-LANE	1	NO	1.48	24	20,838	
		52	SR 1672	FROM BEGIN 3-LANE TO END 3-LANE	3	NO	0.42	36	8,870	
		53	SR 1672	FROM END 3-LANE TO SR 1673	1	NO	1.52	24	21,402	
		54	SR 1672	FROM SR 1673 TO US 221	1	NO	2.4	24	33,792	
		55	SR 1542	FROM US 321 TO EOM	1	NO	0.48	18	5,069	
		56	SR 1543	FROM SR 1542 TO EOM	1	NO	0.76	20	8,917	
		57	SR 1531	FROM US 221 TO EOM	1	NO	1.01	16	9,481	
		58	SR 1385	FROM US 321 TO BEGIN 16' PAVEMENT	1	NO	0.32	18	3,379	
		59	SR 1385	FROM BEGIN 16' PAVEMENT TO EOM	1	NO	0.23	16	2,159	
		60	SR 1310	FROM US 321 TO EOM	1	NO	0.4	16	3,755	
		61	SR 1149	FROM US 321 TO EOM	1	NO	1.41	16	13,235	
		62	SR 1128	FROM BEGIN PAVEMENT TO SR 1125	1	NO	1.07	18	11,299	
		63	SR 1416	FROM US 221 TO US 221	1	NO	1.97	22	25,426	
		64	SR 1530	FROM BLUE RIDGE PKWY TO SR 1533	1	NO	1.94	18	20,486	
		65	SR 1533	FROM US 321 TO SR 1530	1	NO	0.44	18	4,646	
		66	SR 1614	FROM SR 1514 TO EOM	1	NO	0.22	20	2,581	
		67	SR 1331	FROM EOP TO SR 1416	1	NO	0.78	20	9,152	
		68	SR 1512	FROM SR 1416 TO PAVEMENT CHANGE	1	NO	0.89	18	9,398	
		69	SR 1353	FROM US 421 TO SR 1358	1	NO	0.64	18	6,758	
<b>TOTAL FOR PROJ NO. 11CR.20951.20</b>							<b>26.98</b>		<b>310,720</b>	

PROJECT NO	COUNTY	MAP NO	ROUTE	DESCRIPTION	TYP	FINAL SURFACE TESTING REQUIRED	LENGTH MI	WIDTH FT	ASPHALT SURFACE TREATMENT, TRIPLE SEAL SY	ASPHALT SURFACE TREATMENT, TRIPLE SEAL (LIGHTWEIGHT AGGREGATE) SY
11C.095096	Watauga	70	SR 1512	FROM PAVEMENT CHANGE TO SR 1416	1	NO	0.21	20	2,464	
<b>TOTAL FOR PROJ NO. 11C.095096</b>							<b>0.21</b>		<b>2,464</b>	
11C.095098	Watauga	71	SR 1328	FROM PAVEMENT CHANGE TO EOP	1	NO	0.27	20	3,168	
<b>TOTAL FOR PROJ NO. 11C.095098</b>							<b>0.27</b>		<b>3,168</b>	
11C.014082	Caldwell	72	SR 1367	FROM SR1362 TO EOP	1	NO	2.4	21	29,568	
<b>TOTAL FOR PROJ NO. 11C.014082</b>							<b>2.4</b>		<b>29,568</b>	
<b>GRAND TOTAL</b>							<b>60.76</b>		<b>501,328</b>	<b>173,242</b>



PROJECT NO.	SHEET NO.	TOTAL NO.
11CR.20061.20, 11CR.20141.20 11CR.20951.20, ETC.	21	

## THERMOPLASTIC AND PAINT QUANTITIES

PROJECT NO	COUNTY	MAP NO	ROUTE	DESCRIPTION	LENGTH	WIDTH	4810000000-E		4820000000-E	4835000000-E	4840000000-N	4845000000-N
							4" WHITE PAINT LF	4" YELLOW PAINT LF	8" YELLOW PAINT LF	24" WHITE PAINT LF	PAINT MSG SCHOOL EA	PAINT LT ARROW EA
11CR.20061.20	Avery	1	SR 1158	FROM SR 1157 TO EOM	1.1	16	23,232	23,232				
		2	SR 1524	FROM US 221 TO US 221	1.02	14	21,542	21,542				
		3	SR 1137	FROM US 19E TO EOM	0.6	18						
		4	SR 1373	FROM SR 1313 TO DEAD END	0.13	16						
		5	SR 1161	FROM NC 194 TO DEAD END	1.05	18	22,176	22,176				
		6	SR 1503	FROM US 221 TO BRIDGE	0.5	16	10,560	10,560				
		7	SR 1528	FROM BEGIN PAVEMENT TO SR 1518	0.92	18	19,430	19,430				
		8	SR 1169	FROM US 19E TO EOM	0.4	16						
		9	SR 1179	FROM NC 194 TO EOM	0.4	16						
		10	SR 1155	FROM SR 1117 TO EOM	0.3	18						
		11	SR 1166	FROM US 19E TO SR 1186	0.49	16	10,349	10,349				
		12	SR 1166	FROM SR 1186 TO EOM	1.75	16	36,960	36,960				
		13	SR 1114	FROM SR 1117 TO US 221	2.46	17	51,955	51,955				
		14	SR 1107	FROM MITCHELL COUNTY LINE TO BRIDGE	2.12	18	44,774	44,774				
		15	SR 1165	FROM US 19E TO EOM	0.39	16						
		16	SR 1310	FROM SR 1308 TO END PAVEMENT	0.69	18	14,573	14,573				
		17	SR 1355	FROM SR 1337 TO WATAUGA COUNTY LINE	1.2	20	25,344	25,344				
<b>TOTAL FOR PROJ NO. 11CR.20061.20</b>					<b>15.52</b>		<b>280,895</b>	<b>280,895</b>				
							<b>561,790</b>					
11CR.20141.20	Caldwell	18	SR 1523	FROM NCL LENOIR TO NCL LENOIR	0.82	20	17,318	17,318				
		19	SR 1523	FROM NCL LENOIR TO US 321	0.77	20	16,262	16,262				
		20	SR 1340	FROM SR 1310 TO NC 90	1.75	20	36,960	36,960				
		21	SR 1410	FROM SR 1386 TO EOM	0.09	20						
		22	SR 1386	FROM SR 1143 TO SR 1325	0.37	20	7,814	7,814				
		23	SR 1591	FROM SR 1571 TO EOM	0.39	18						
		24	SR 1571	FROM SR 1552 TO EOM	0.35	18						
		25	SR 1760	FROM US 321 TO SR 1777	0.2	18						
		26	SR 1776	FROM SR 1778 TO EOM	0.2	16						
		27	SR 1777	FROM SR 1778 TO EOM	0.29	16						
		28	SR 1778	FROM SR 1776 TO SR 1777	0.1	16						
		29	SR 1401	FROM SR 1316 TO EOM	0.39	18						
		30	SR 1416	FROM SR 1303 TO EOM	0.36	18						
		31	SR 1417	FROM SR 1310 TO EOM	0.35	16						
		32	SR 1362	FROM SR 1361 TO SR 1367	1.34	20	28,301	28,301				
		33	SR 1718	FROM SR 1748 TO SR 1844	0.83	20	17,530	17,530				
		34	SR 1718	FROM SR 1844 TO SR 1770	1.24	20	26,189	26,189				
		35	SR 1320	FROM SR 1387 TO SR 1190	0.73	18	15,418	15,418				
		36	SR 1380	FROM SR 1387 TO SR 1320	0.51	18	10,771	10,771				
37	SR 1706	FROM NC 18 TO NC 18	2.03	20	42,874	42,874						
38	SR 1788	FROM US 64 TO US 64	1.34	18	28,301	28,301						
39	SR 1328	FROM SR 1327 TO SR 1327	0.93	20	19,642	19,642						
<b>TOTAL FOR PROJ NO. 11CR.20141.20</b>					<b>15.38</b>		<b>267,380</b>	<b>267,380</b>				
							<b>534,760</b>					

PROJECT NO.	SHEET NO.	TOTAL NO.
11CR.20061.20, 11CR.20141.20 11CR.20951.20, ETC.	22	

## THERMOPLASTIC AND PAINT QUANTITIES

PROJECT NO	COUNTY	MAP NO	ROUTE	DESCRIPTION	LENGTH	WIDTH	4810000000-E		4820000000-E	4835000000-E	4840000000-N	4845000000-N
							4" WHITE PAINT LF	4" YELLOW PAINT LF	8" YELLOW PAINT LF	24" WHITE PAINT LF	PAINT MSG SCHOOL EA	PAINT LT ARROW EA
11CR.20951.20	Watauga	40	SR 1570	FROM SR 1508 TO EOM	0.7	18						
		41	SR 1576	FROM SR 1570 TO EOM	0.91	16						
		42	SR 1583	FROM SR 1508 TO EOM	0.46	16						
		43	SR 1526	FROM SR 1514 TO SR 1658	0.46	20	9,715	9,715				
		44	SR 1526	FROM SR 1658 TO EOP	0.86	18	18,163	18,163				
		45	SR 1549	FROM PAVEMENT CHANGE TO SR 1550	1.46	20	30,835	30,835				
		46	SR 1535	FROM SR 1534 TO PAVEMENT CHANGE	0.58	18	12,250	12,250				
		47	SR 1535	FROM PAVEMENT CHANGE TO SR 1536	0.33	18	6,970	6,970				
		48	SR 1384	FROM SR 1340 TO EOM	1.18	16	24,922	24,922				
		49	SR 1325	FROM SR 1324 TO EOM	1.37	18	28,934	28,934				
		50	SR 1371	FROM SR 1308 TO US 421	0.29	18	6,125	6,125				
		51	SR 1672	FROM US 221 TO BEGIN 3-LANE	1.48	24	31,258	31,258				
		52	SR 1672	FROM BEGIN 3-LANE TO END 3-LANE	0.42	36	9,650	17,740	800			6
		53	SR 1672	FROM END 3-LANE TO SR 1673	1.52	24	32,102	32,102		96	12	
		54	SR 1672	FROM SR 1673 TO US 221	2.4	24	50,688	50,688				
		55	SR 1542	FROM US 321 TO EOM	0.48	18						
		56	SR 1543	FROM SR 1542 TO EOM	0.76	20	16,051	16,051				
		57	SR 1531	FROM US 221 TO EOM	1.01	16	21,331	21,331				
		58	SR 1385	FROM US 321 TO BEGIN 16' PAVEMENT	0.32	18						
		59	SR 1385	FROM BEGIN 16' PAVEMENT TO EOM	0.23	16						
		60	SR 1310	FROM US 321 TO EOM	0.4	16						
		61	SR 1149	FROM US 321 TO EOM	1.41	16	29,779	29,779				
		62	SR 1128	FROM BEGIN PAVEMENT TO SR 1125	1.07	18	22,598	22,598				
		63	SR 1416	FROM US 221 TO US 221	1.97	22	41,606	41,606				
		64	SR 1530	FROM BLUE RIDGE PKWY TO SR 1533	1.94	18	40,973	40,973				
		65	SR 1533	FROM US 321 TO SR 1530	0.44	18	9,293	9,293				
		66	SR 1614	FROM SR 1514 TO EOM	0.22	20						
		67	SR 1331	FROM EOP TO SR 1416	0.78	20	16,474	16,474				
		68	SR 1512	FROM SR 1416 TO PAVEMENT CHANGE	0.89	18	18,797	18,797		72	6	
		69	SR 1353	FROM US 421 TO SR 1358	0.64	18	13,517	13,517				
<b>TOTAL FOR PROJ NO. 11CR.20951.20</b>					<b>26.98</b>		<b>492,031</b>	<b>500,121</b>	<b>800</b>	<b>168</b>	<b>18</b>	<b>6</b>
							<b>992,152</b>					
11C.095096	Watauga	70	SR 1512	FROM PAVEMENT CHANGE TO SR 1416	0.21	20	4,435	4,435		80	6	
<b>TOTAL FOR PROJ NO. 11C.095096</b>					<b>0.21</b>		<b>4,435</b>	<b>4,435</b>		<b>80</b>	<b>6</b>	
							<b>8,870</b>					
11C.095098	Watauga	71	SR 1328	FROM PAVEMENT CHANGE TO EOP	0.27	20						
<b>TOTAL FOR PROJ NO. 11C.095098</b>					<b>0.27</b>							
11C.014082	Caldwell	72	SR 1367	FROM SR1362 TO EOP	2.4	21	50,688	50,688				
<b>TOTAL FOR PROJ NO. 11C.014082</b>					<b>2.4</b>		<b>50,688</b>	<b>50,688</b>				
							<b>101,376</b>					
<b>GRAND TOTAL</b>					<b>60.76</b>		<b>1,095,429</b>	<b>1,103,519</b>	<b>800</b>	<b>248</b>	<b>24</b>	<b>6</b>
							<b>2,198,948</b>					