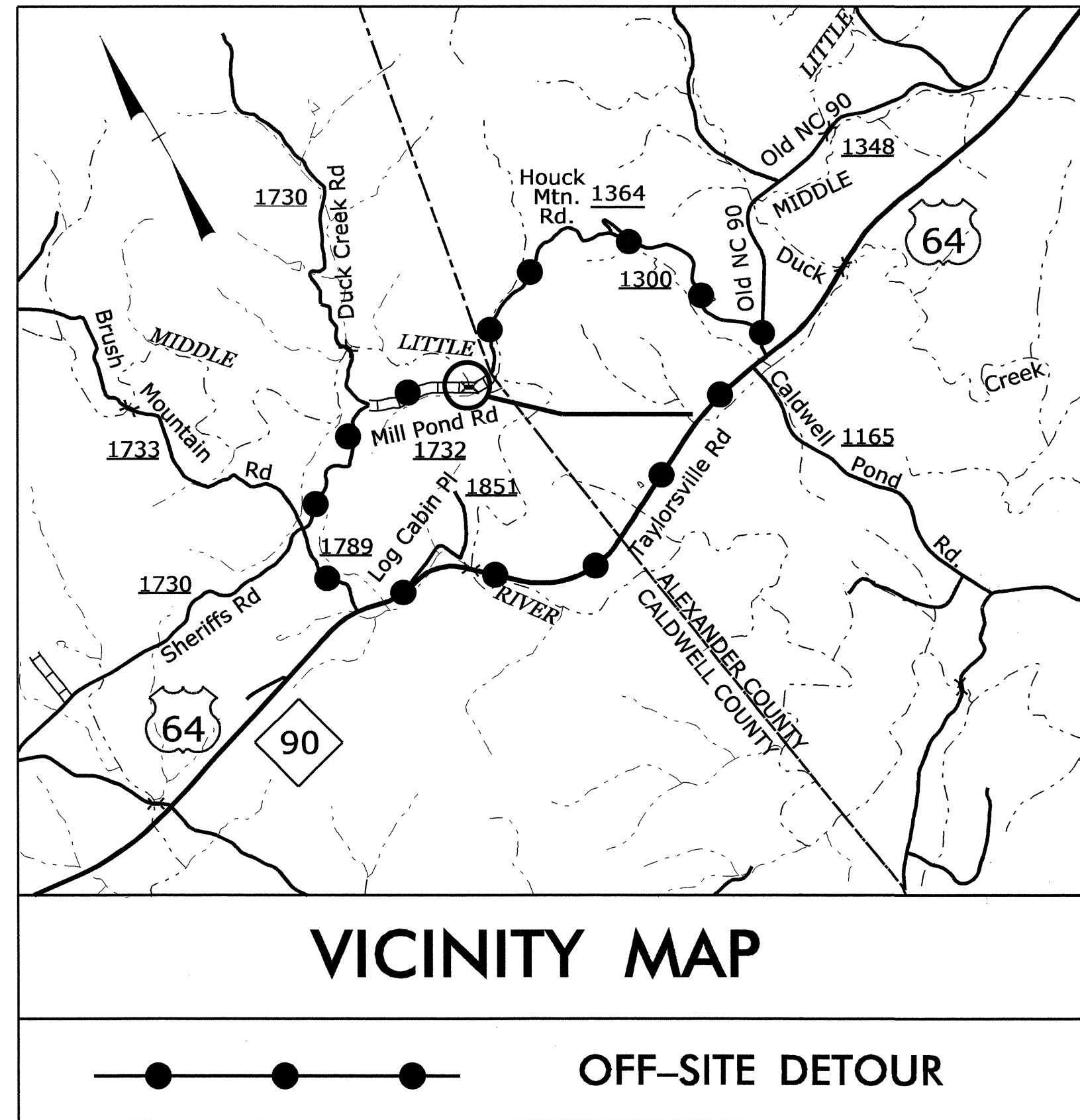


09/08/99

STATE OF NORTH CAROLINA
DIVISION OF HIGHWAYS

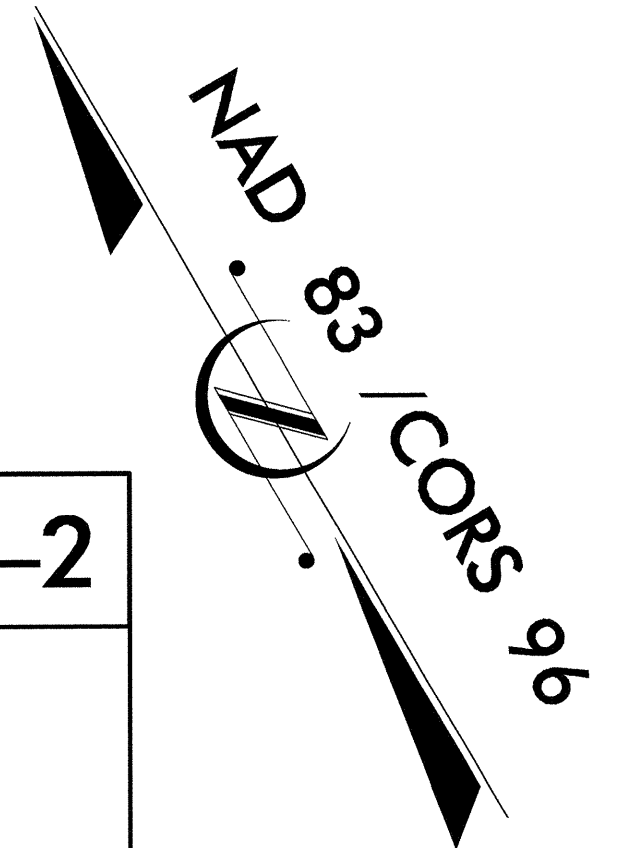
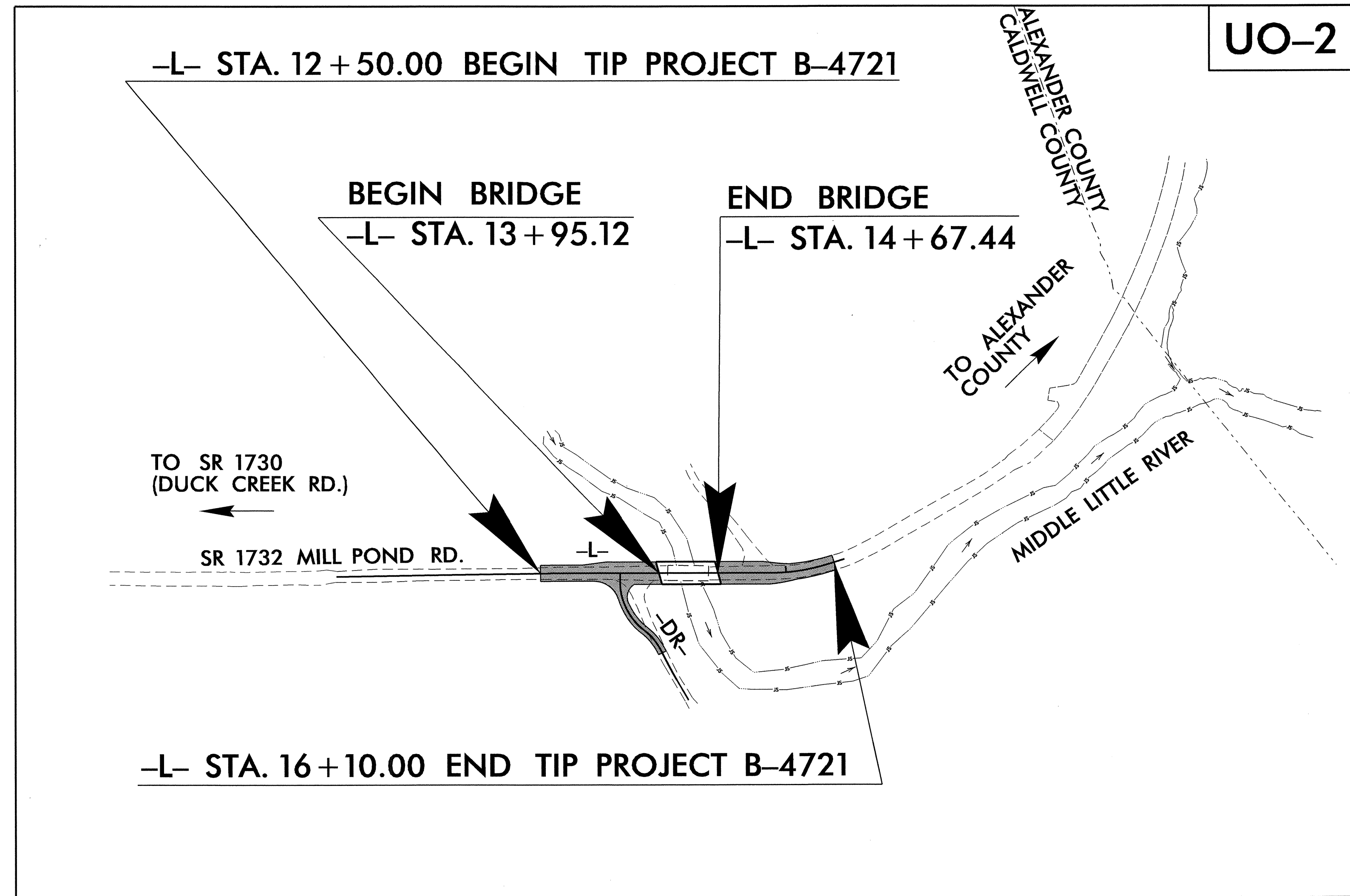
T.I.P. NO.	SHEET NO.
B-4721	UO-1

TIP PROJECT: B-4721

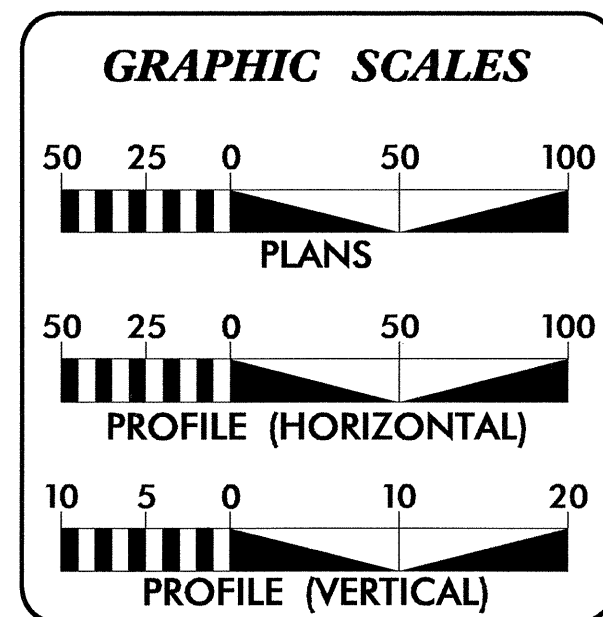


UTILITIES BY OTHERS PLANS CALDWELL COUNTY

**LOCATION: REPLACE BRIDGE NO. 57 OVER THE
MIDDLE LITTLE RIVER ON SR 1732**
TYPE OF WORK: AERIAL AND BURRIED TELEPHONE



04-FEB-2013 11:58
R:\UTILITIES\RDY\UT\Pro1\B-4721\UT_TITL\UO1.psh.dgn
\$\$\$USERNAME\$\$\$

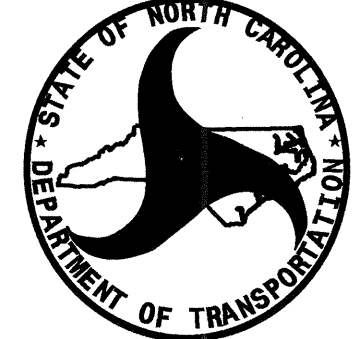


INDEX OF SHEETS

SHEET NO.	DESCRIPTION
UO-1	TITLE SHEET
UO-2	UTILITY BY OTHERS PLAN SHEET

UTILITY OWNERS ON PROJECT

(1) TELEPHONE - AT&T



PREPARED IN THE OFFICE OF:
**DIVISION OF HIGHWAYS
UTILITIES UNIT
UTILITIES ENGINEERING**

1555 MAIL SERVICES CENTER
RALEIGH, NC 27699-1555
PHONE (919) 707-6600
FAX (919) 250-4151

Roger Worthington, P.E. UTILITIES SECTION ENGINEER
Carl A. Barclay, P.E. UTILITIES SQUAD LEADER PROJECT ENGINEER
James E. Swinson UTILITIES PROJECT DESIGNER

UTILITIES BY OTHERS

NOTE:
ALL PROPOSED UTILITY WORK
SHOWN ON THIS SHEET WILL
BE DONE BY OTHERS

-L-
PI Sta 12+67.05 PI Sta 15+67.63
Δ = 0° 53' 33.4" (RT) Δ = 17° 37' 15.7" (LT)
D = 5' 00' 00.0" D = 25' 00' 00.0"
L = 17.85' L = 70.48'
T = 8.93' T = 35.52'
R = 1,445.92' R = 229.18'
SE = SEE PLANS SE = SEE PLANS
RO = SEE PLANS RO = SEE PLANS
DS = 55 MPH DS < 15 MPH

-DR-
PI Sta 10+47.48 PI Sta 10+96.97
Δ = 52° 26' 19.0" (LT) Δ = 26° 40' 54.1" (RT)
D = 76' 23' 39.7" D = 76' 23' 39.7"
L = 68.64' L = 34.93'
T = 36.94' T = 17.79'
R = 75.00' R = 75.00'
SE = SEE PLANS SE = SEE PLANS
RO = SEE PLANS RO = SEE PLANS
① = S 30° 08' 50.9" W

**NOTE: CLASS II RIP RAP
TO ABOVE NORMAL
WATER SURFACE ONLY
(STRUCTURE PAY ITEM)**

**-L- POT Sta. 13+47.00 =
-DR- POT Sta. 10+00.00**
-DR- PC Sta. 10+10.54

-L- PT Sta. 12+75.97
-L- PC Sta. 12+58.12

-L- STA. 12+50.00 BEGIN TIP PROJECT B-4721

-L- POT Sta. 10+00.00

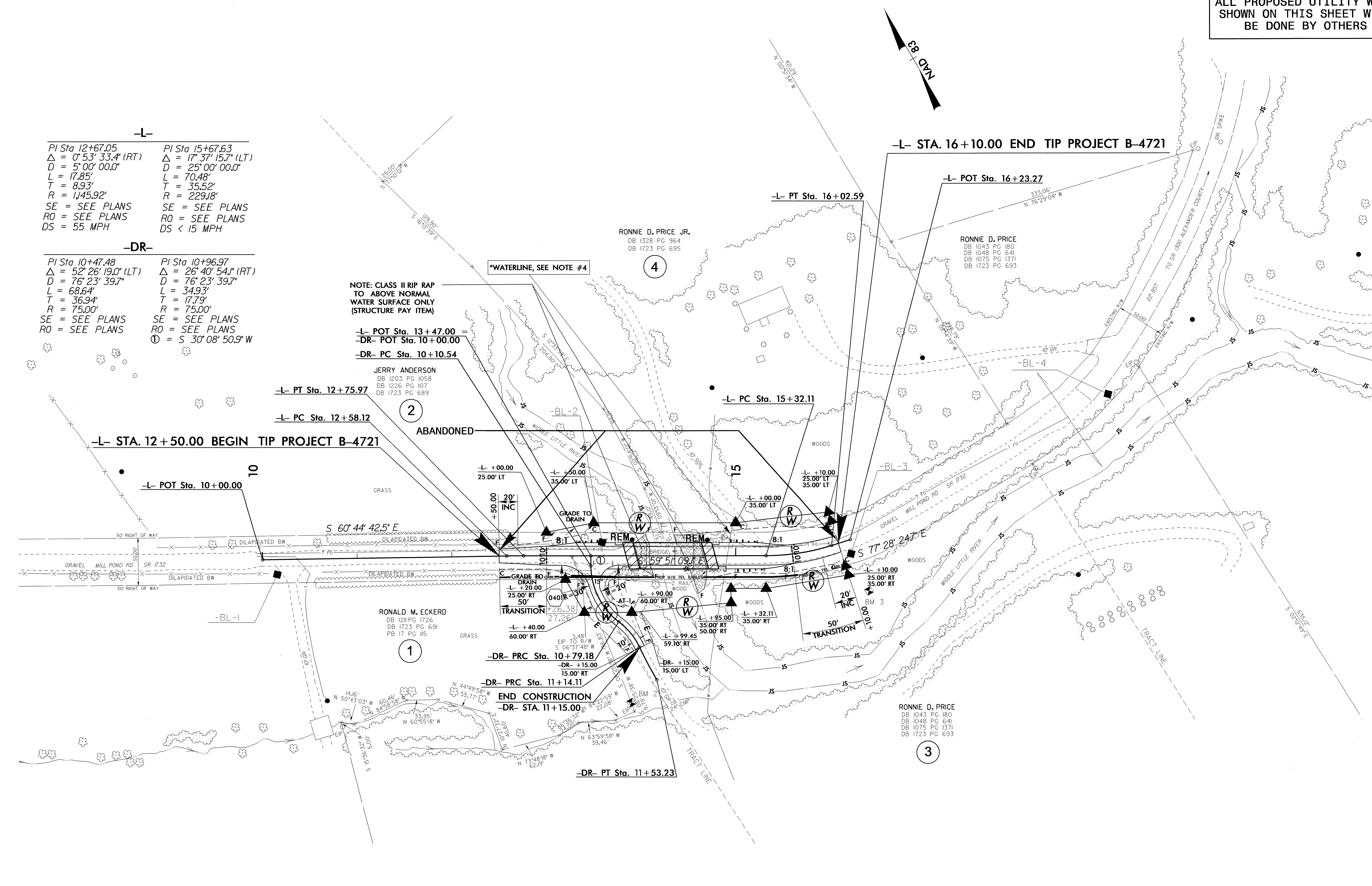
JERRY ANDERSON
DB 1203 PG 1058
DB 1226 PG 107
DB 1723 PG 689

RONNIE D. PRICE JR.
DB 1328 PG 964
DB 1723 PG 695

RONNIE D. PRICE
DB 1043 PG 180
DB 1048 PG 641
DB 1075 PG 1371
DB 1723 PG 693

RONALD M. ECKERD
DB 1211 PG 1726
DB 1723 PG 691
PB 17 PG 115

RONNIE D. PRICE
DB 1043 PG 180
DB 1048 PG 641
DB 1075 PG 1371
DB 1723 PG 693



5/14/09
 R:\U\1\04-FEB-2013 13:40 \B-4721\Ut-4_L02.psh.dgn