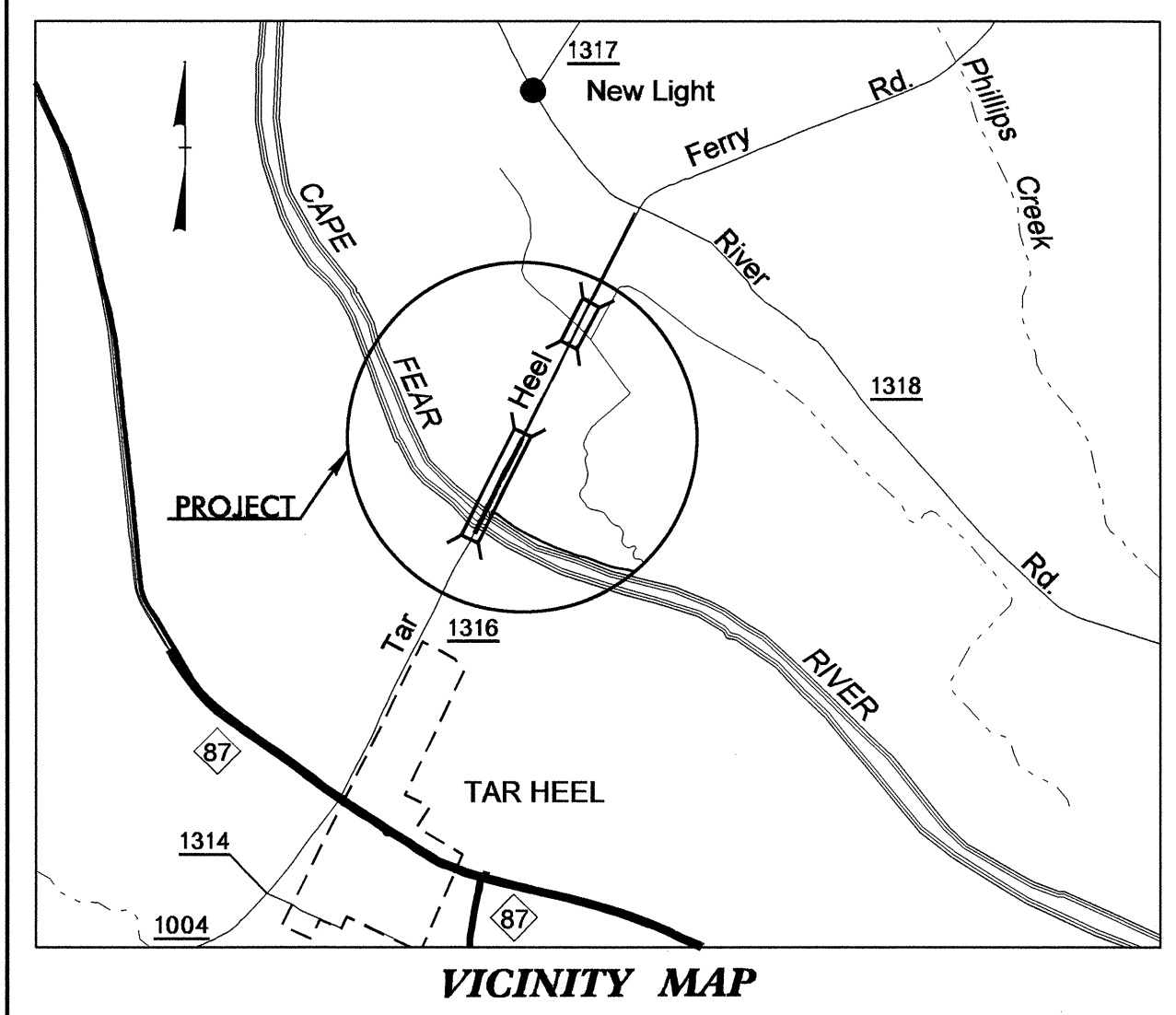
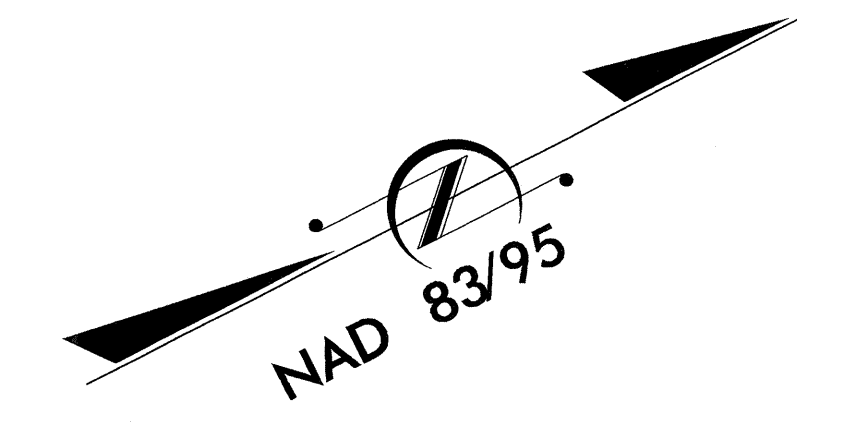


T.I.P. NO.	SHEET NO.
B-4712	UO-1

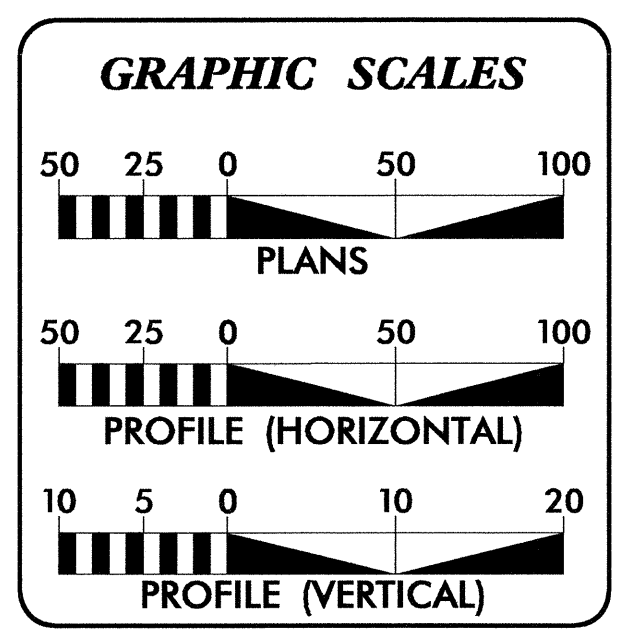
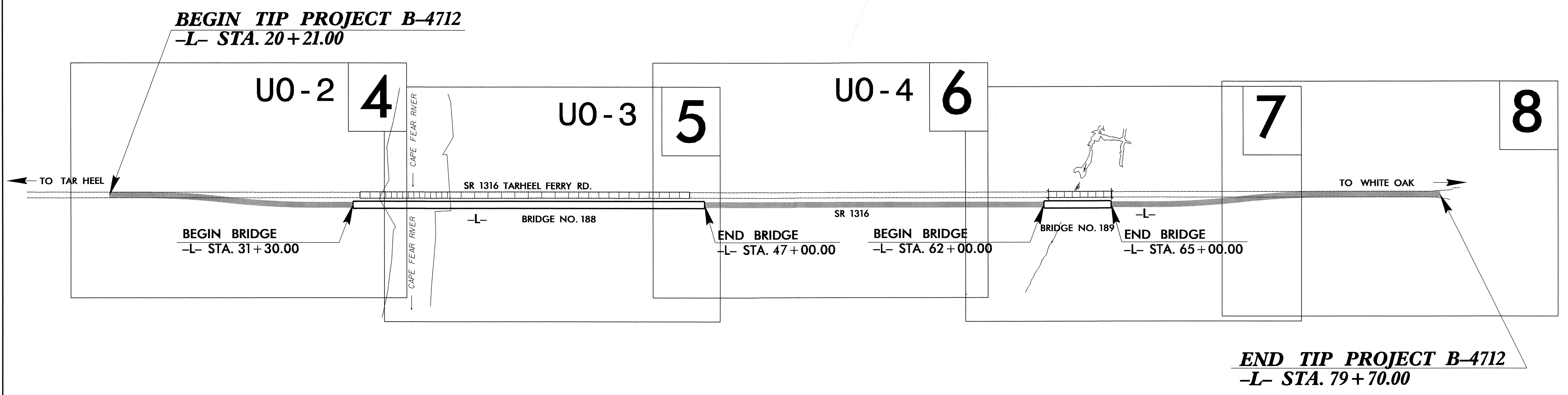
STATE OF NORTH CAROLINA
DIVISION OF HIGHWAYS

**UTILITIES BY OTHERS PLANS
BLADEN COUNTY**

**LOCATION: BRIDGE NO. 188 AND NO. 189 OVER
THE CAPE FEAR RIVER ON SR 1316**
**TYPE OF WORK: RELOCATION OF TRANSMISSION
POWER LINES**



TIP PROJECT: B-4712



INDEX OF SHEETS	
SHEET NO.	DESCRIPTION
UO-1	TITLE SHEET
UO-2 THRU UO-4	UTILITY BY OTHERS PLAN SHEETS

UTILITY OWNERS ON PROJECT
(1) FOUR COUNTY EMC (POWER)

PREPARED IN THE OFFICE OF:
**DIVISION OF HIGHWAYS
UTILITIES UNIT
UTILITIES ENGINEERING**

1591 MAIL SERVICES CENTER
RALEIGH NC 27699-1591
PHONE (919) 707-6690
FAX (919) 250-4151

<u>Roger Worthington, P.E.</u>	UTILITIES SECTION ENGINEER
<u>Corey Bousquet, P.E.</u>	UTILITIES SQUAD LEADER PROJECT ENGINEER
<u>Mariko Hafeez</u>	UTILITIES PROJECT DESIGNER

29-OCT-2012 07:48 F:\Utilities\RDY\UT\Proj\U4751\Ut_Ttle_UO1.psh_MEH.dgn \$\$\$USERNAME\$\$\$

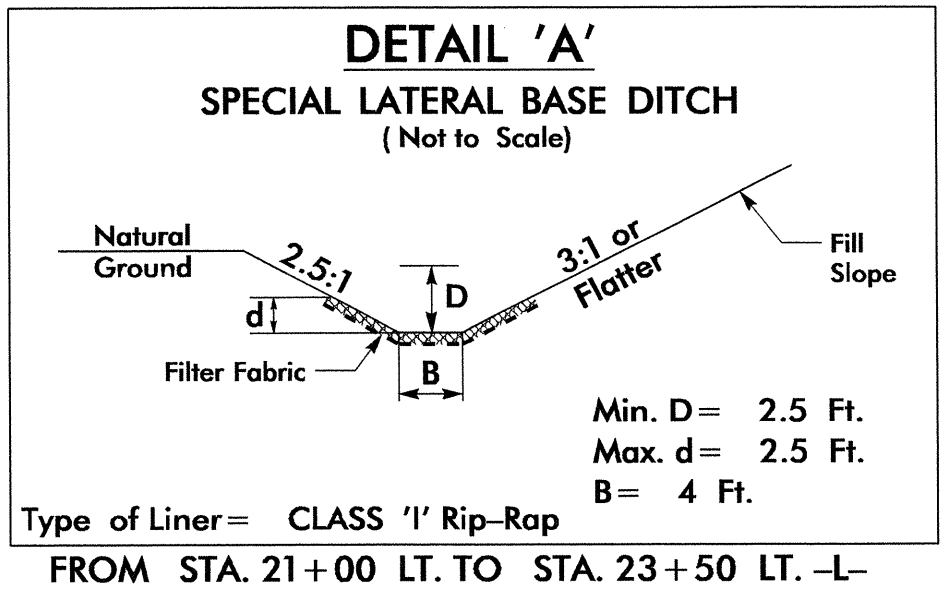
UTILITIES BY OTHERS

NOTE:
ALL PROPOSED UTILITY WORK SHOWN ON THIS SHEET WILL BE DONE BY OTHERS

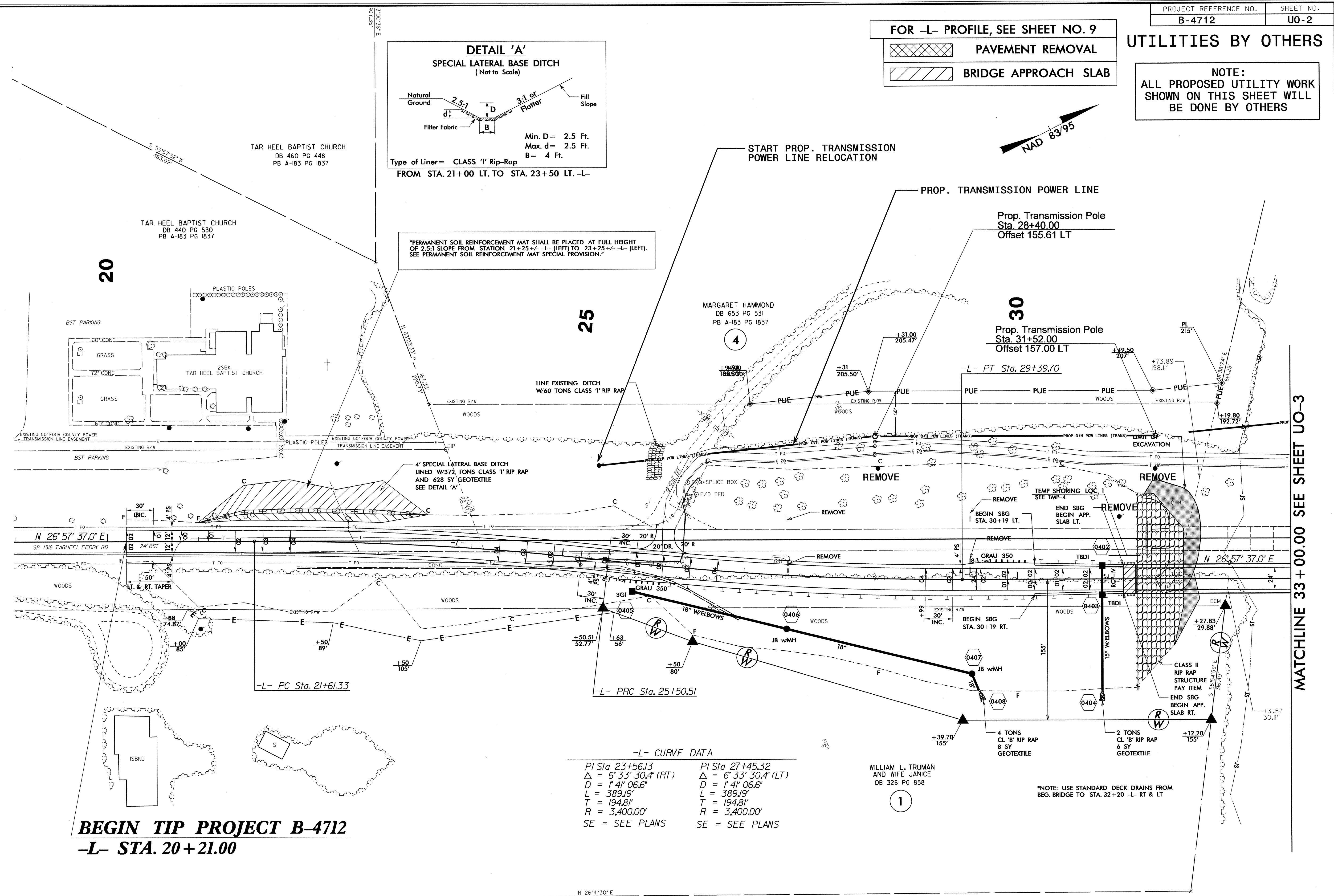
FOR -L- PROFILE, SEE SHEET NO. 9

PAVEMENT REMOVAL

BRIDGE APPROACH SLAB



PERMANENT SOIL REINFORCEMENT MAT SHALL BE PLACED AT FULL HEIGHT OF 2.5:1 SLOPE FROM STATION 21+25 +/- -L- (LEFT) TO 23+25 +/- -L- (LEFT). SEE PERMANENT SOIL REINFORCEMENT MAT SPECIAL PROVISION.



-L- CURVE DATA

PI Sta 23+56.13	PI Sta 27+45.32
$\Delta = 6^{\circ} 33' 30.4''$ (RT)	$\Delta = 6^{\circ} 33' 30.4''$ (LT)
$D = 1^{\circ} 41' 06.6''$	$D = 1^{\circ} 41' 06.6''$
$L = 389.19'$	$L = 389.19'$
$T = 194.81'$	$T = 194.81'$
$R = 3,400.00'$	$R = 3,400.00'$
SE = SEE PLANS	SE = SEE PLANS

WILLIAM L. TRUMAN AND WIFE JANICE
DB 326 PG 858

*NOTE: USE STANDARD DECK DRAINS FROM BEG. BRIDGE TO STA. 32+20 -L- RT & LT

BEGIN TIP PROJECT B-4712
-L- STA. 20+21.00

MATCHLINE 33 + 00.00 SEE SHEET U0-3

5/14/99
29-OCT-2012 16:51
R:\Utilities\Projects\B4712-U0-U0_pah2.dgn
P:\Utilities\Projects\B4712-U0-U0_pah2.dgn

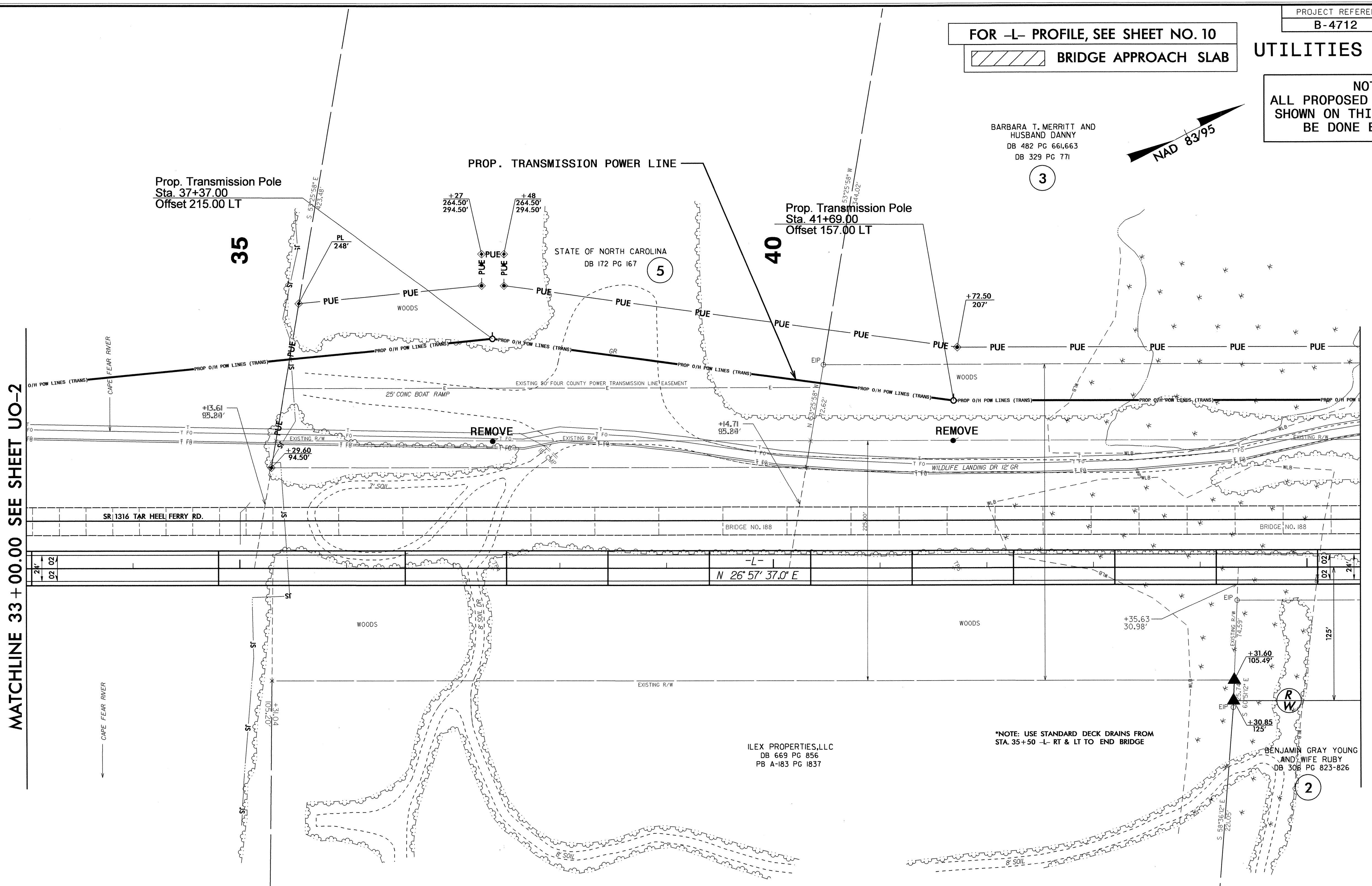
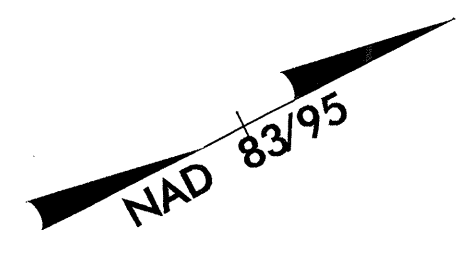
FOR -L- PROFILE, SEE SHEET NO. 10

BRIDGE APPROACH SLAB

UTILITIES BY OTHERS

NOTE:
ALL PROPOSED UTILITY WORK
SHOWN ON THIS SHEET WILL
BE DONE BY OTHERS

BARBARA T. MERRITT AND
HUSBAND DANNY
DB 482 PG 661,663
DB 329 PG 771



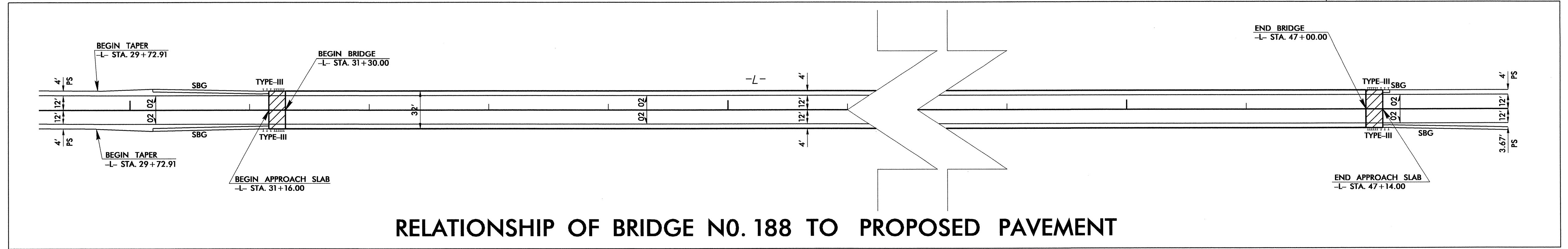
MATCHLINE 33 + 00.00 SEE SHEET UO-2

MATCHLINE 45 + 50.00 SEE SHEET UO-4

ILEX PROPERTIES, LLC
DB 669 PG 856
PB A-183 PG 1837

*NOTE: USE STANDARD DECK DRAINS FROM
STA. 35+50 -L- RT & LT TO END BRIDGE

BENJAMIN GRAY YOUNG
AND WIFE RUBY
DB 308 PG 823-826

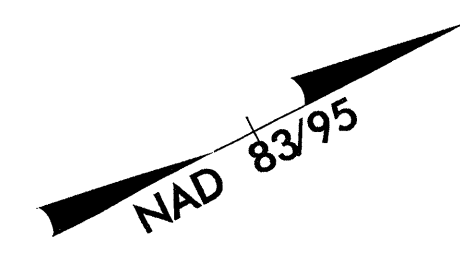


RELATIONSHIP OF BRIDGE NO. 188 TO PROPOSED PAVEMENT

5/14/09
R:\U0-3\29-OCT-2012\11:00\B4712-U0-U0-psht3.dgn

UTILITIES BY OTHERS

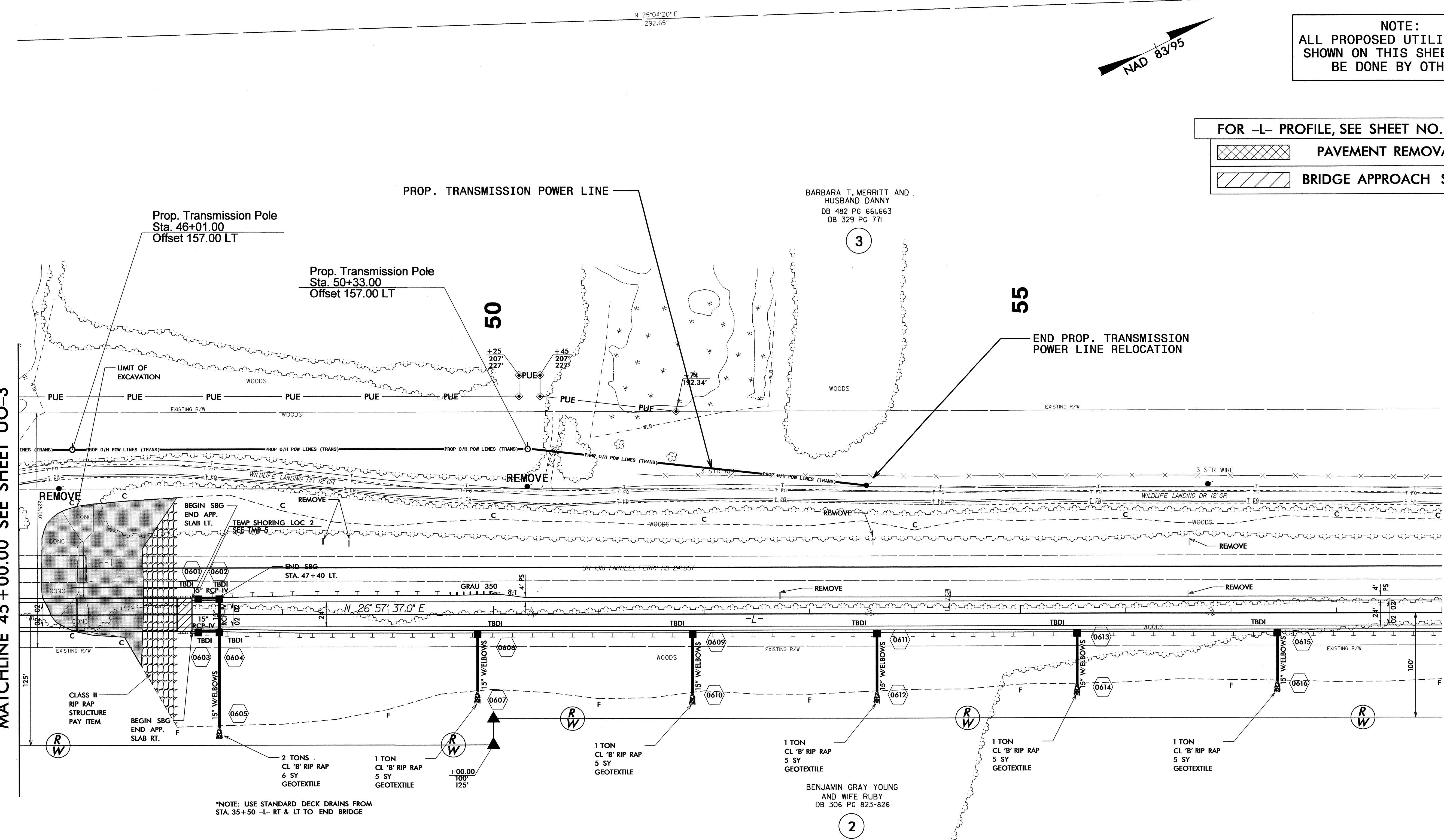
NOTE:
ALL PROPOSED UTILITY WORK SHOWN ON THIS SHEET WILL BE DONE BY OTHERS



FOR -L- PROFILE, SEE SHEET NO. 11

	PAVEMENT REMOVAL
	BRIDGE APPROACH SLAB

MATCHLINE 45 + 00.00 SEE SHEET UO-3



*NOTE: USE STANDARD DECK DRAINS FROM STA. 35+50 -L- RT & LT TO END BRIDGE

5/14/99

R:\u30-OCT-2012 12:37 01\B4712.Ut.U0.psh4.dgn