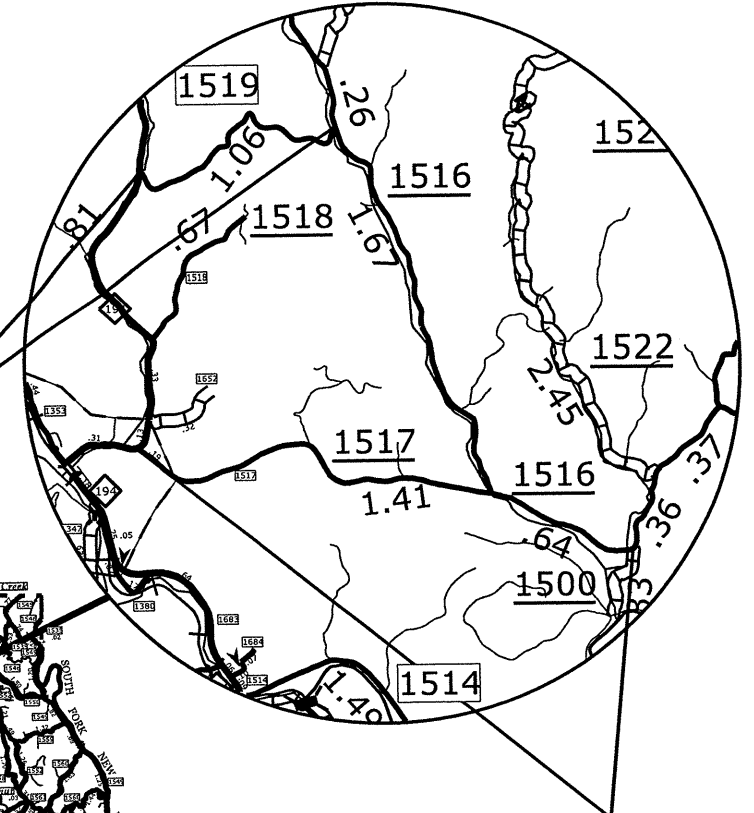
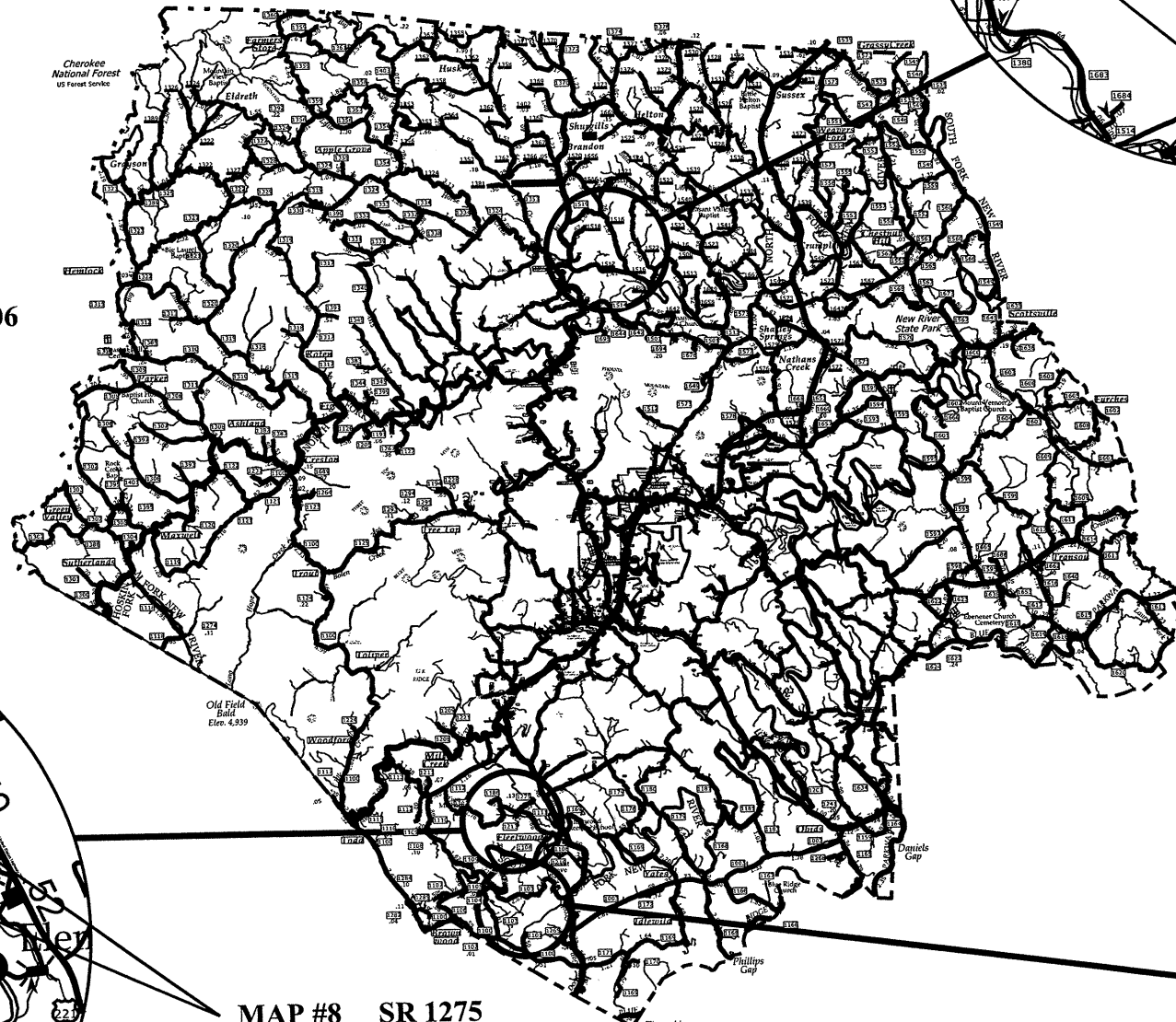


STATE OF NORTH CAROLINA  
DIVISION OF HIGHWAYS

**ASHE COUNTY**

ASPHALT SURFACE TREATMENT



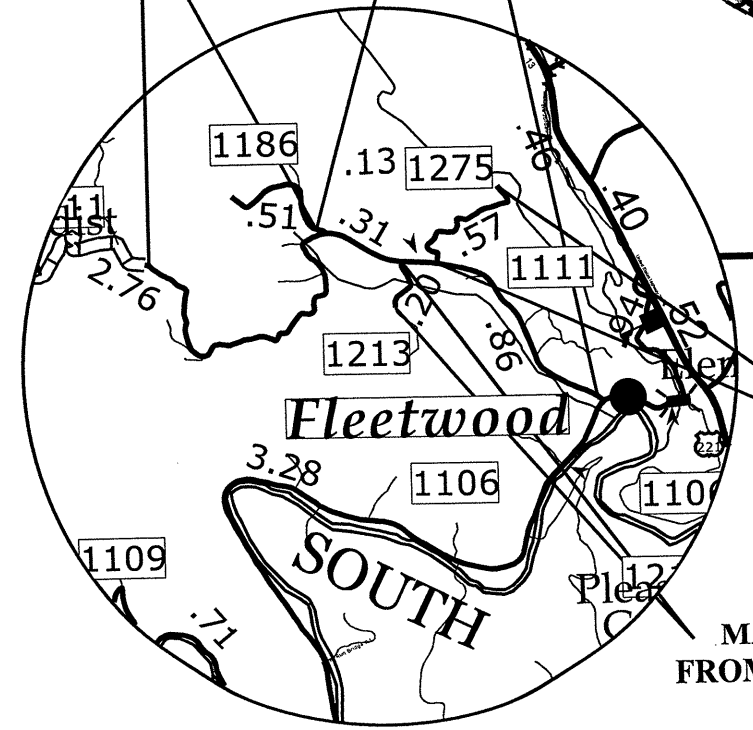
MAP #11 SR 1519  
FROM NC 194 TO SR 1516

MAP #10 SR 1517  
FROM SR 1500 TO NC 194

MAP #3 SR 1111  
FROM SR 1186 TO SR 1106

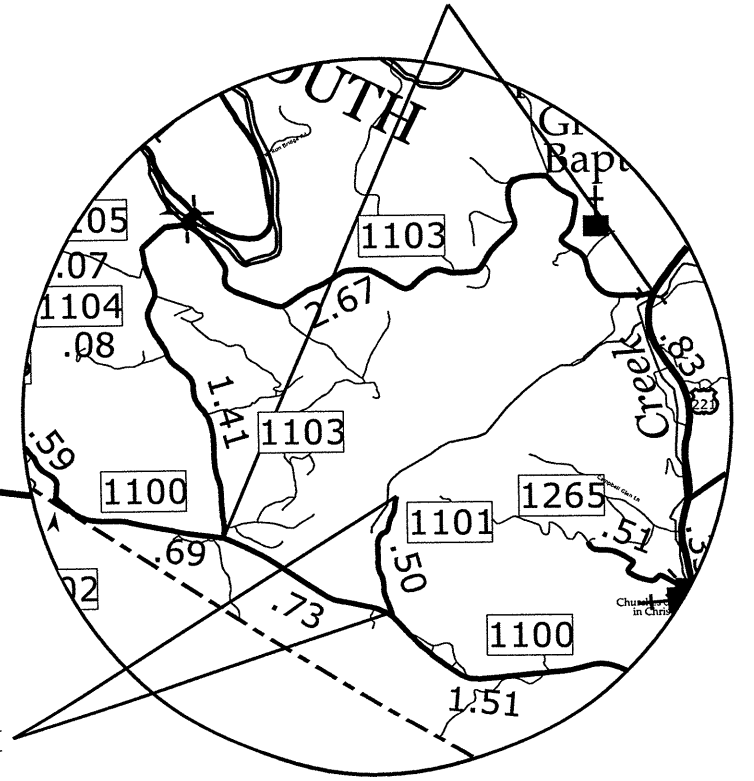
MAP #4 SR 1111  
FROM BEGIN PAVEMENT  
TO SR 1186

MAP #2 SR 1103  
FROM SR 1100 TO US 221



MAP #8 SR 1275  
FROM SR 1111 TO EOM

MAP #7 SR 1213  
FROM SR 1111 TO EOM



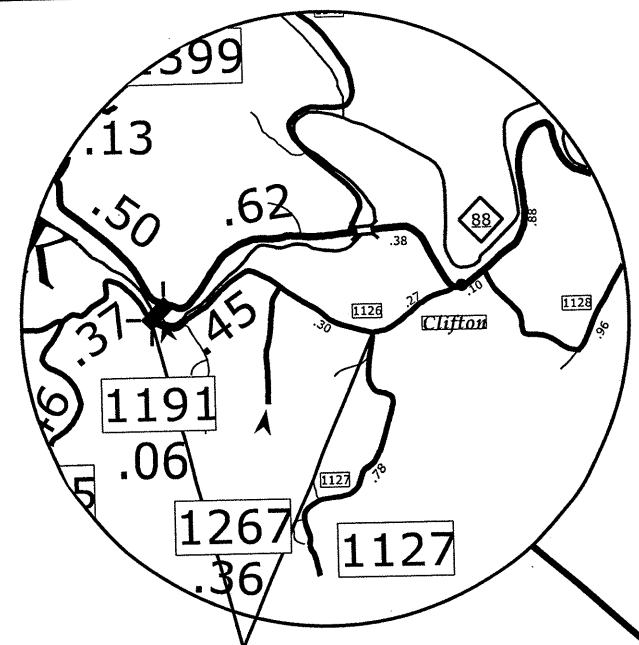
MAP #1 SR 1101  
FROM SR 1100 TO EOM

8/17/99

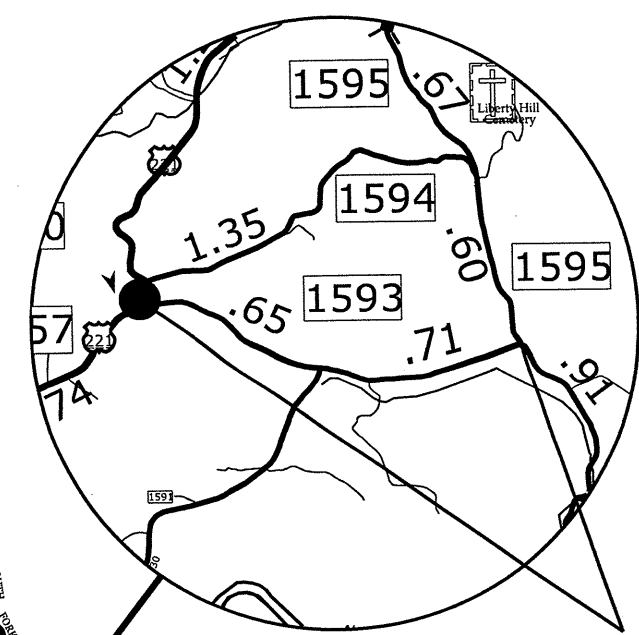
STATE OF NORTH CAROLINA  
DIVISION OF HIGHWAYS

**ASHE COUNTY**

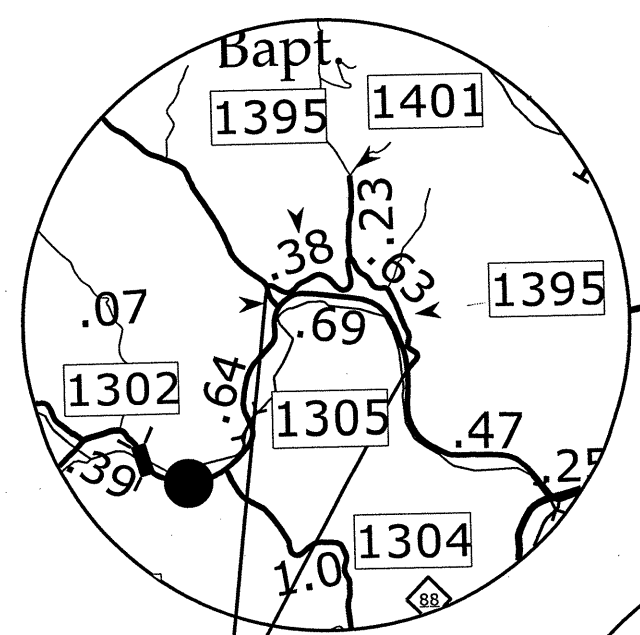
ASPHALT SURFACE TREATMENT



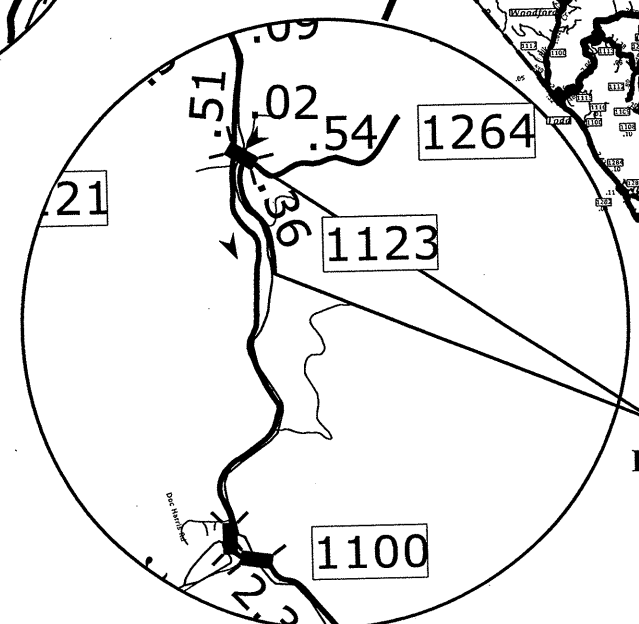
MAP #6 SR 1126  
FROM SR 1127 TO SR 1191



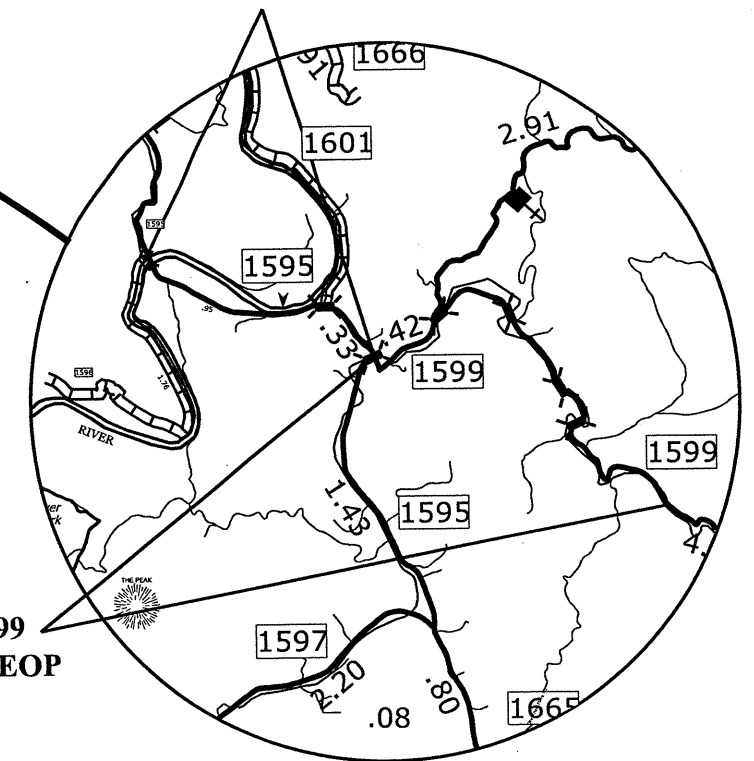
MAP #12 SR 1593  
FROM US 221 TO SR 1595



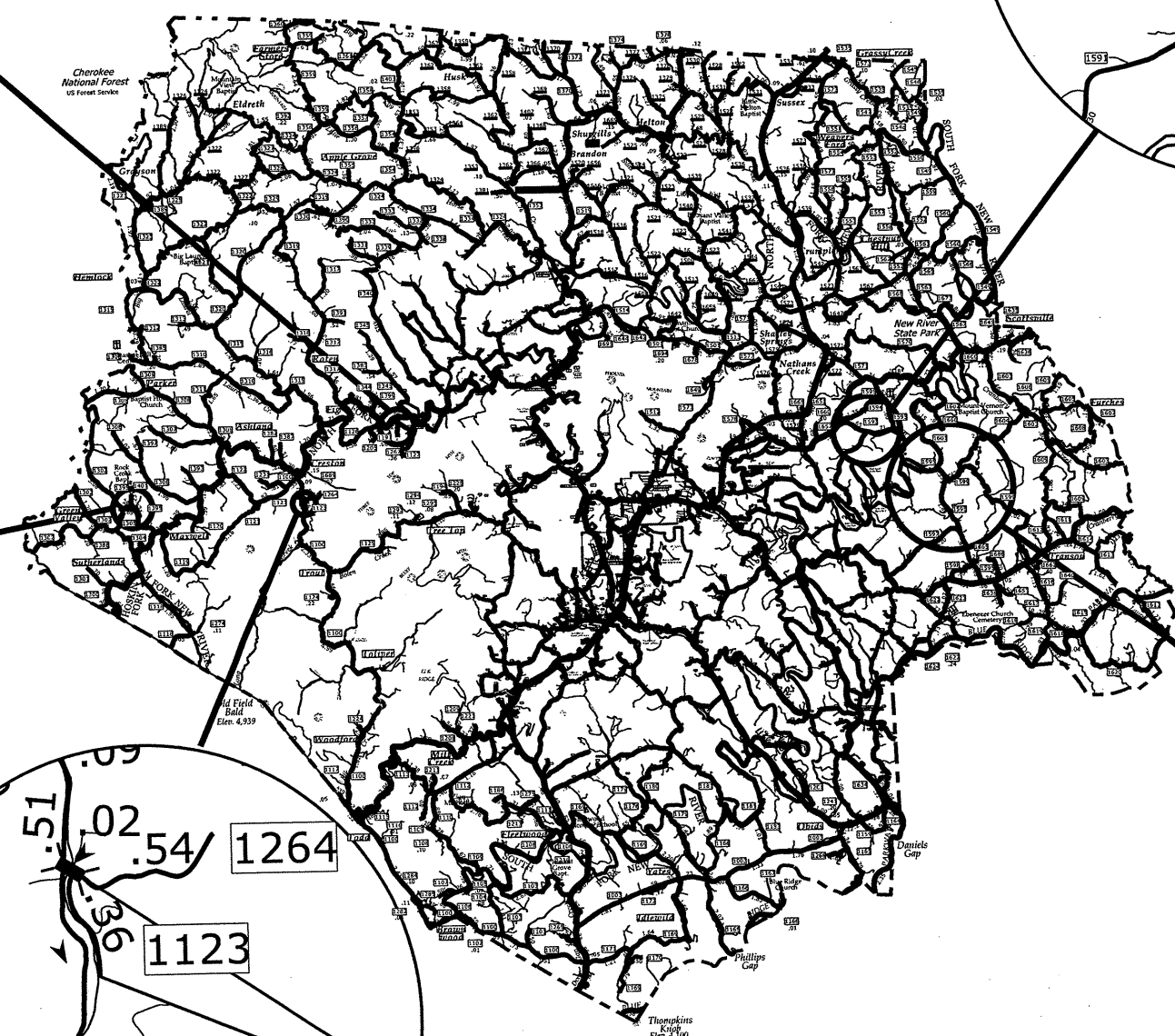
MAP #9 SR 1395  
FROM SR 1302 TO SR 1305



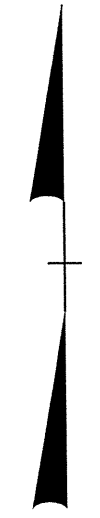
MAP #5 SR 1123  
FROM SR 1100 TO EOM



MAP #14 SR 1599  
FROM SR 1595 TO EOP



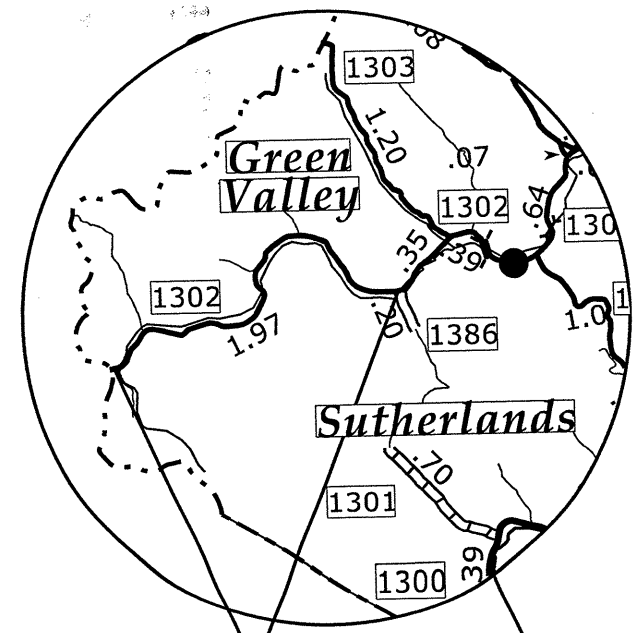
8/17/99



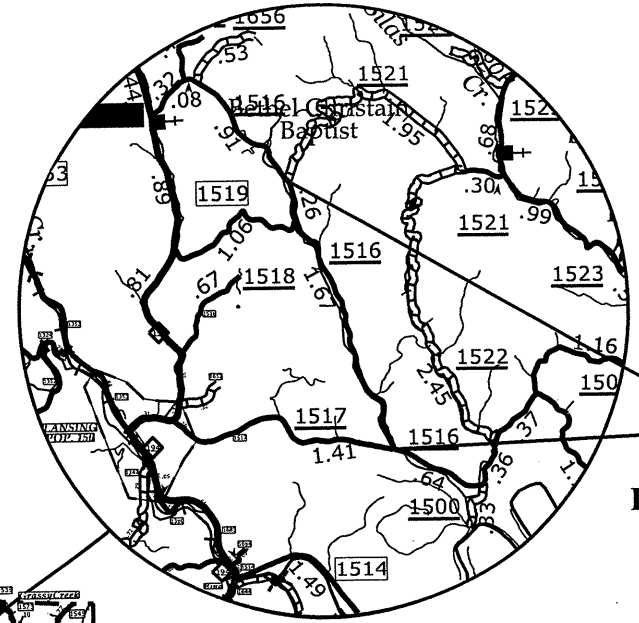
STATE OF NORTH CAROLINA  
DIVISION OF HIGHWAYS

**ASHE COUNTY**

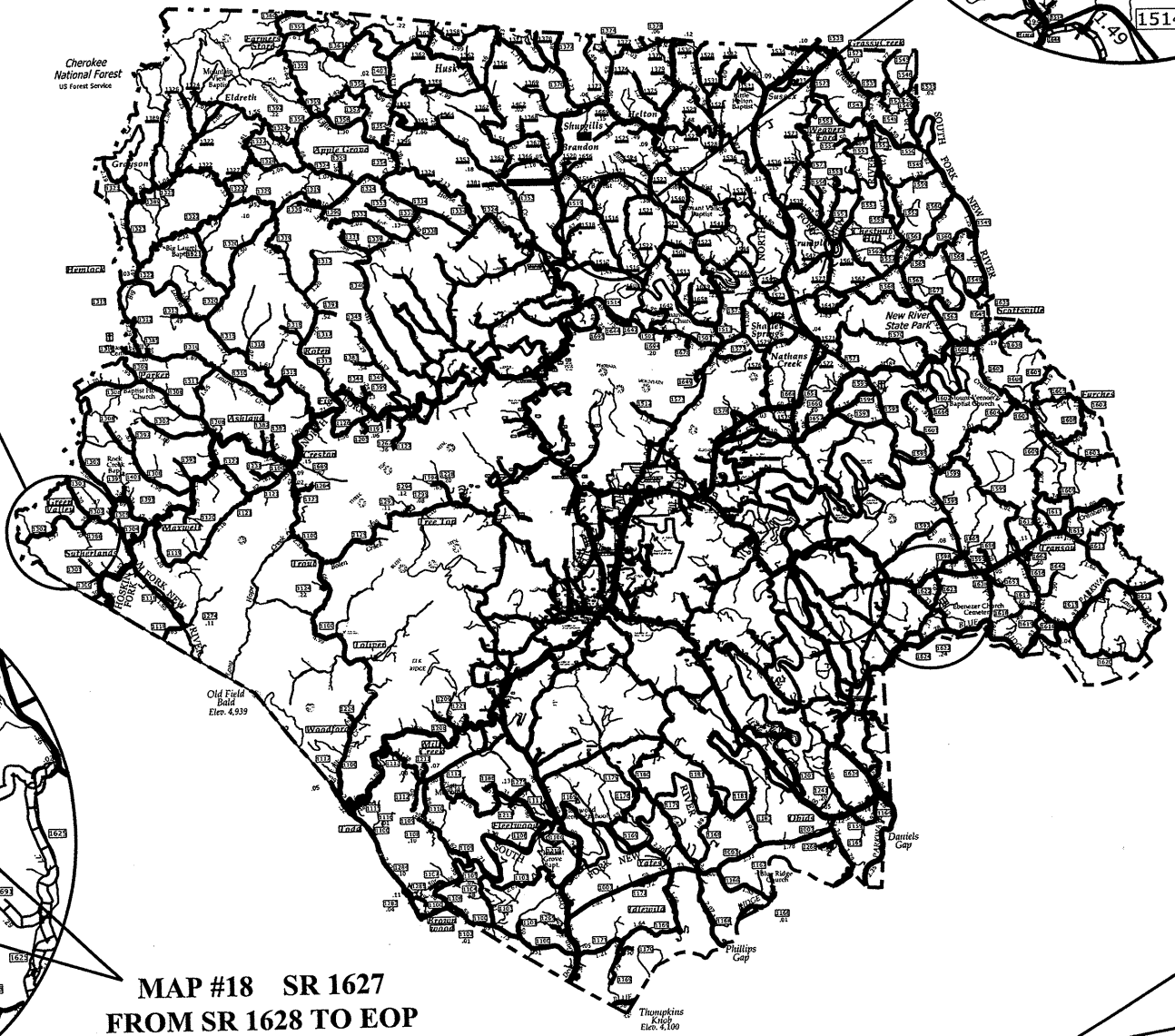
ASPHALT SURFACE TREATMENT



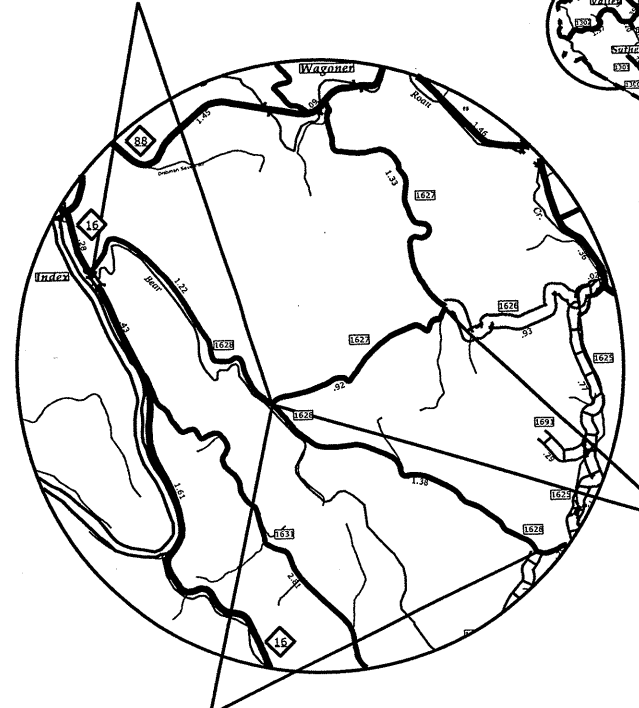
MAP #15 SR 1302  
FROM TN STATE LINE  
TO SR 1386



MAP #16 SR 1516  
FROM SR 1517 TO SR 1521



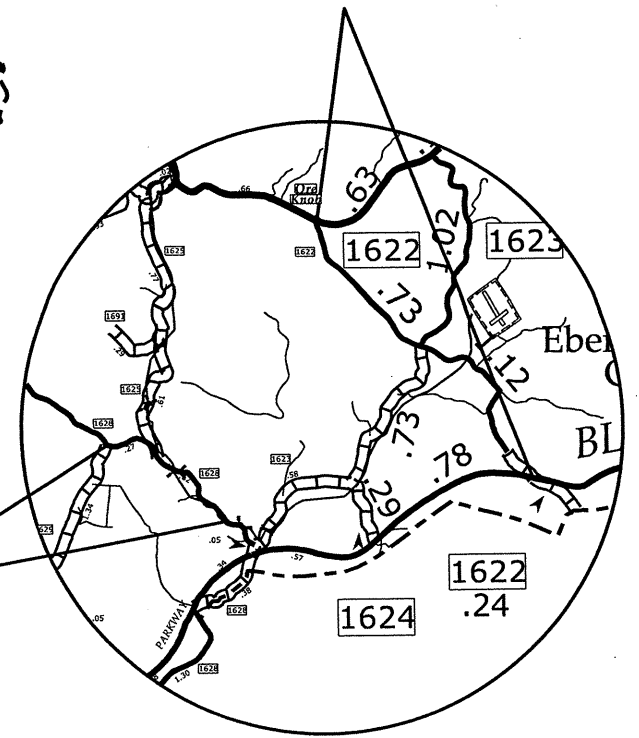
MAP #20 SR 1628  
FROM NC 16 TO SR 1627



MAP #21 SR 1628  
FROM SR 1627 TO SR 1629

MAP #18 SR 1627  
FROM SR 1628 TO EOP

MAP #19 SR 1628  
FROM SR 1629 TO EOP



MAP #17 SR 1622  
FROM BLUE RIDGE PARKWAY  
TO NC 88

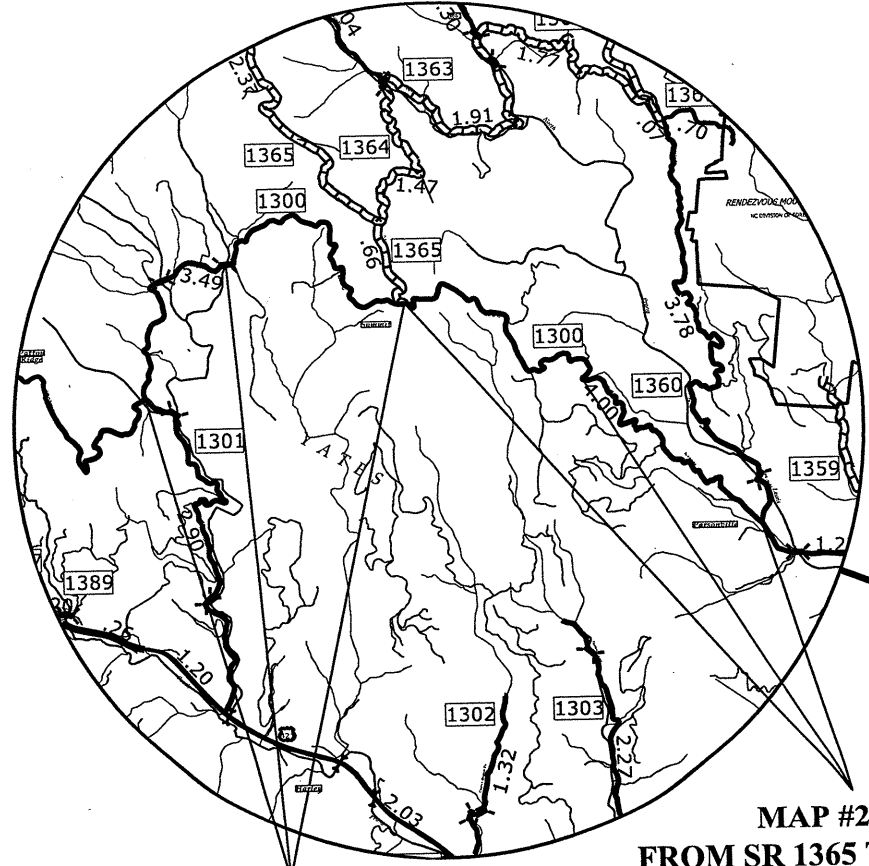


8/17/99

STATE OF NORTH CAROLINA  
DIVISION OF HIGHWAYS

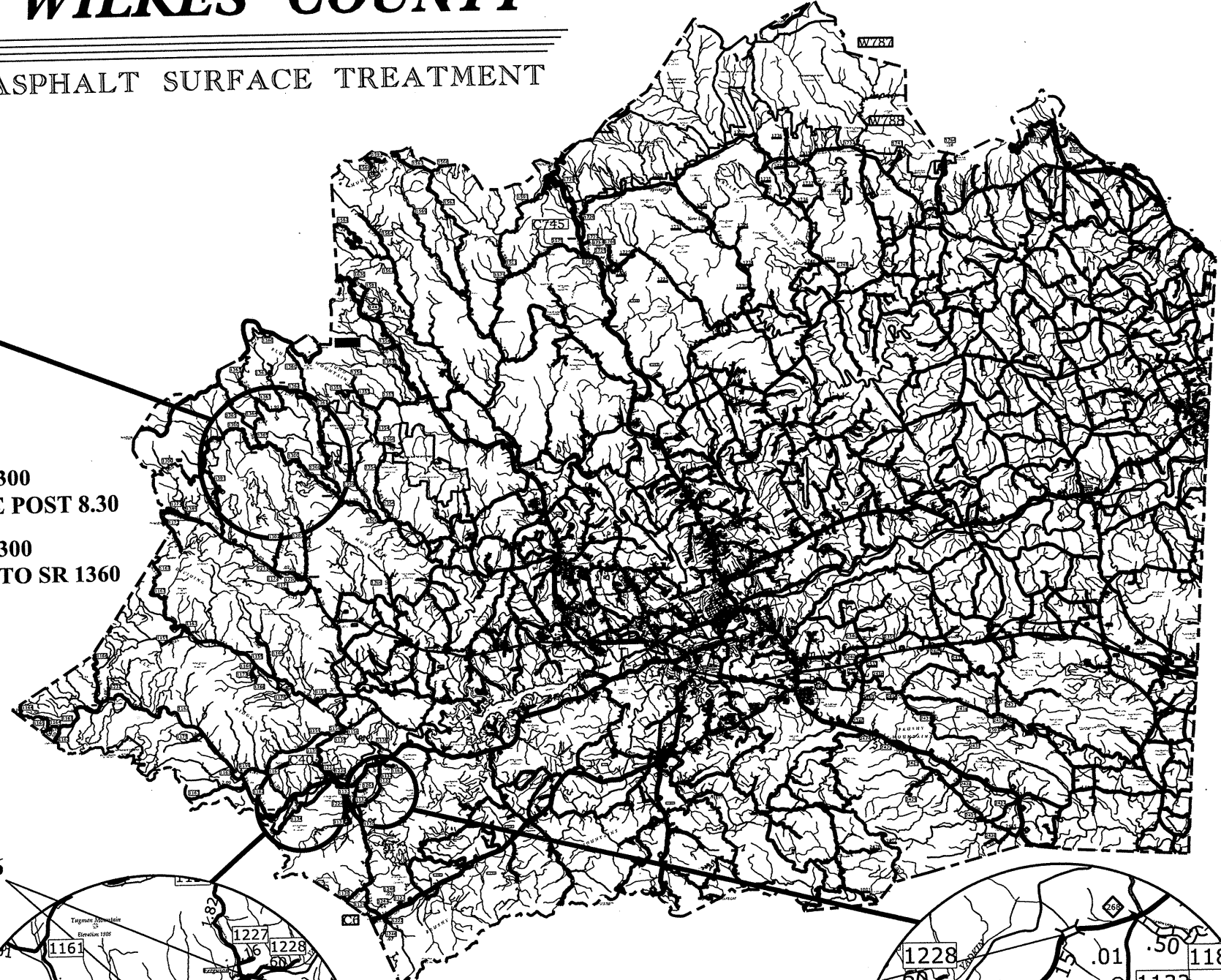
**WILKES COUNTY**

ASPHALT SURFACE TREATMENT



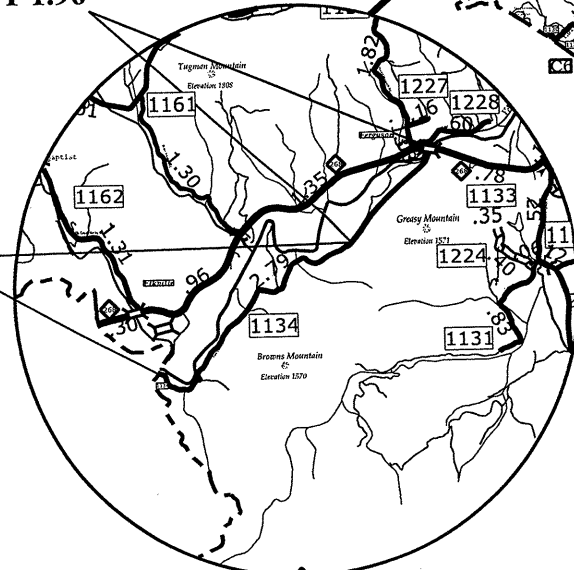
MAP #26 SR 1300  
FROM SR 1301 TO BRIDGE #628  
MAP #27 SR 1300  
FROM BRIDGE #628 TO SR 1365

MAP #28 SR 1300  
FROM SR 1365 TO MILE POST 8.30  
MAP #29 SR 1300  
FROM MILE POST 8.30 TO SR 1360



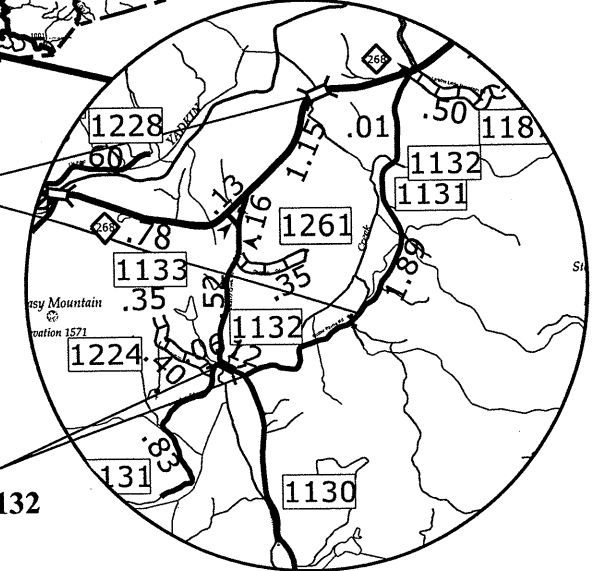
MAP #25 SR 1134  
FROM MILE POST 1.96  
TO NC 268

MAP #24 SR 1134  
FROM CALDWELL COUNTY LINE  
TO MILE POST 1.96

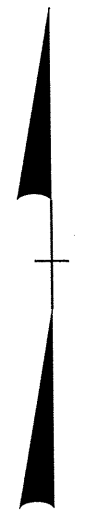


MAP #22 SR 1131  
FROM NC 268 TO EOP

MAP #23 SR 1131  
FROM SR 1130 TO SR 1132



8/17/99

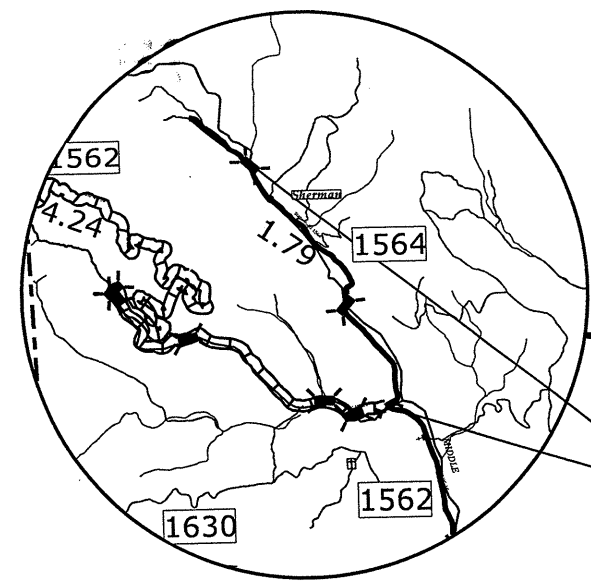


STATE OF NORTH CAROLINA  
DIVISION OF HIGHWAYS

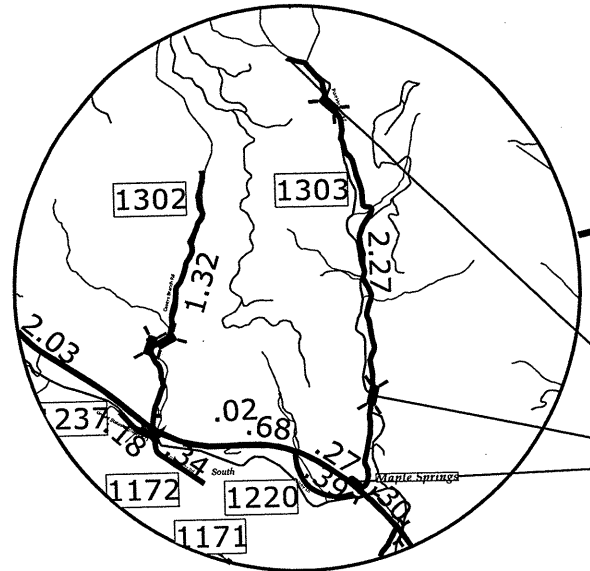
**WILKES COUNTY**

ASPHALT SURFACE TREATMENT

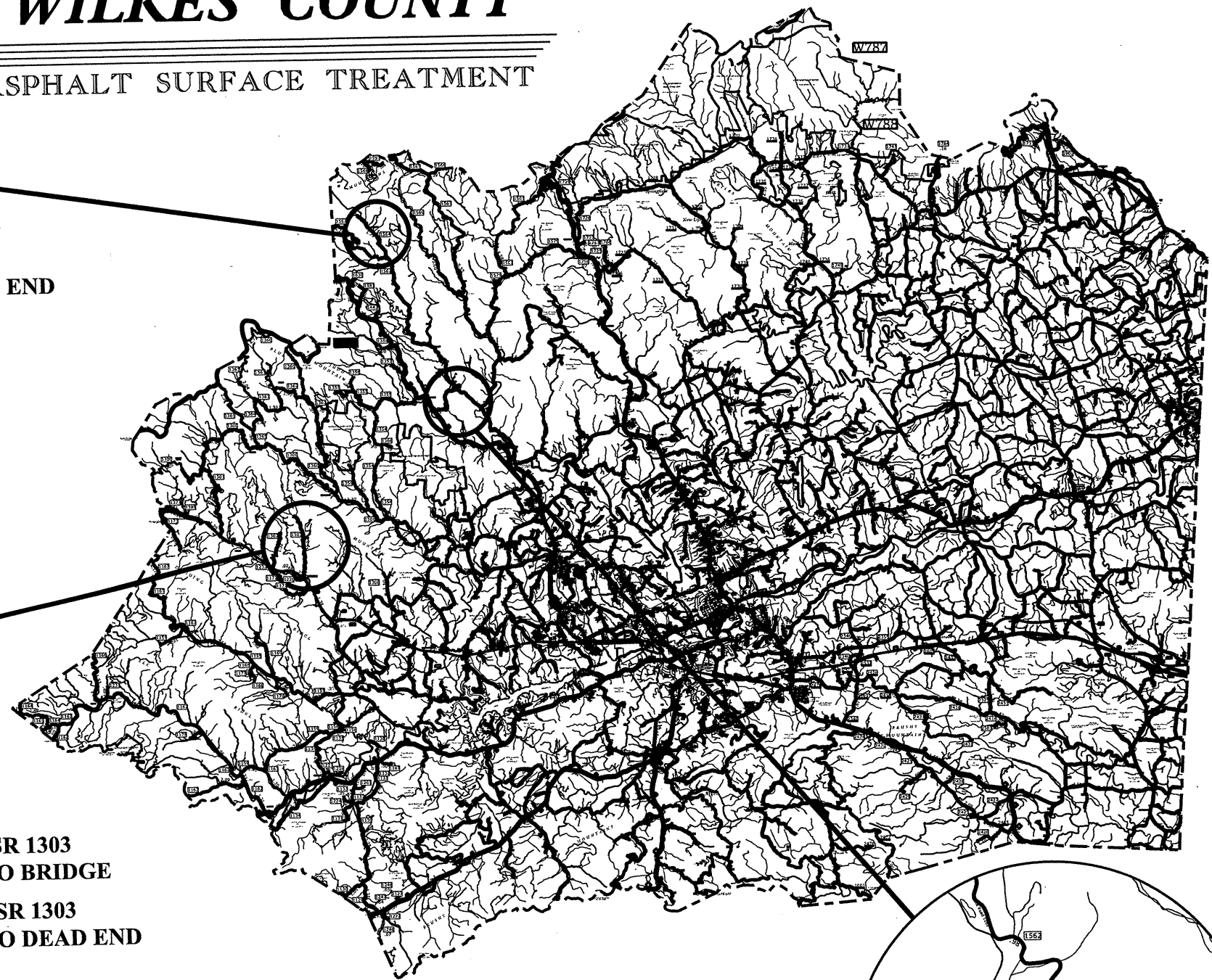
8/17/99



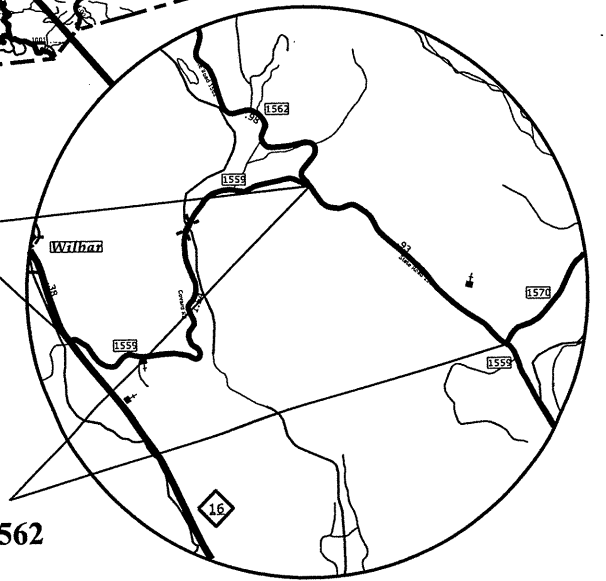
MAP #39 SR 1564  
FROM SR 1562 TO DEAD END



MAP #30 SR 1303  
FROM US 421 TO BRIDGE  
MAP #31 SR 1303  
FROM BRIDGE TO DEAD END



MAP #38 SR 1559  
FROM SR 1562 TO NC 16



MAP #37 SR 1559  
FROM SR 1570 TO SR 1562

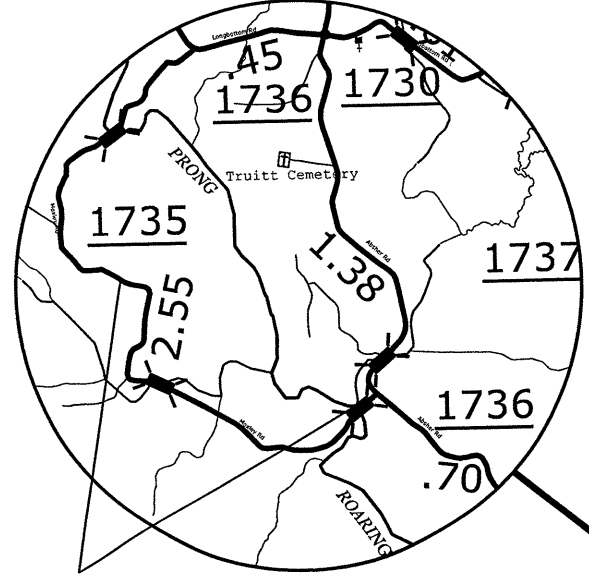




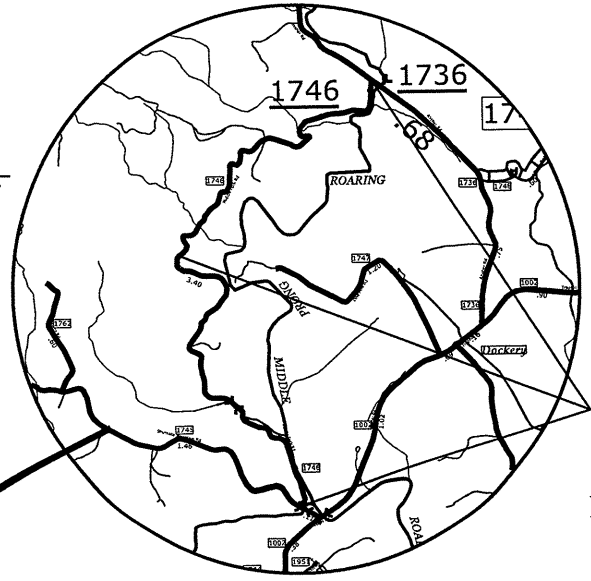
STATE OF NORTH CAROLINA  
DIVISION OF HIGHWAYS

**WILKES COUNTY**

ASPHALT SURFACE TREATMENT

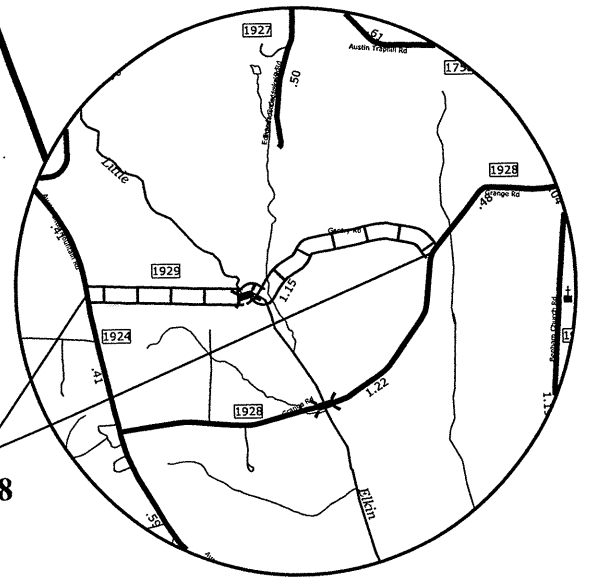
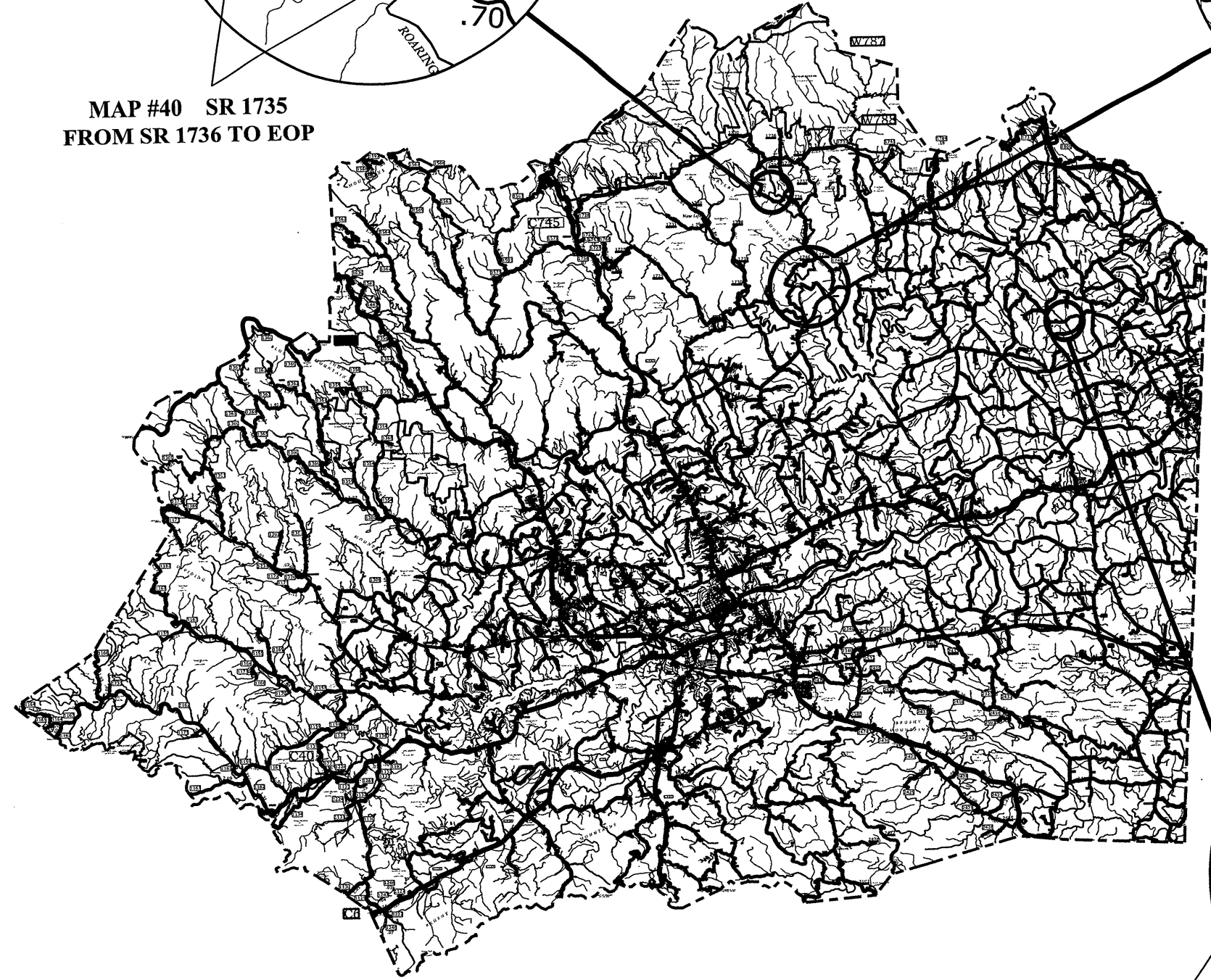


MAP #40 SR 1735  
FROM SR 1736 TO EOP

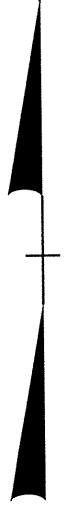


MAP #41 SR 1746  
FROM SR 1736  
TO MILE POST 1.73

MAP #42 SR 1746  
FROM MILE POST 1.73  
TO SR 1745



MAP #43 SR 1929  
FROM SR 1924 TO SR 1928



8/17/99

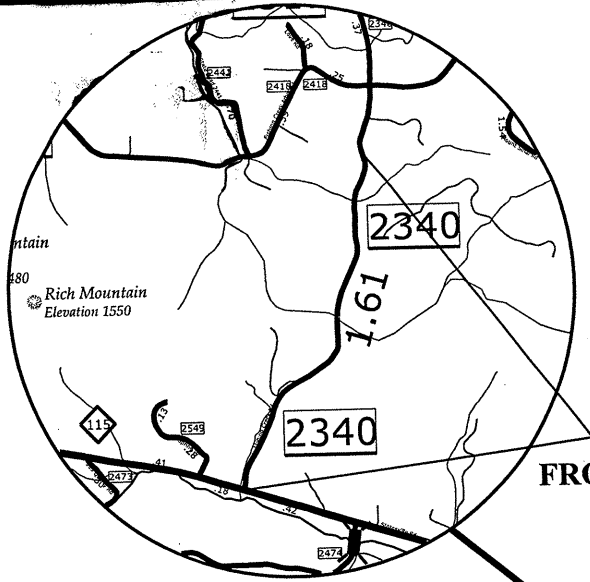




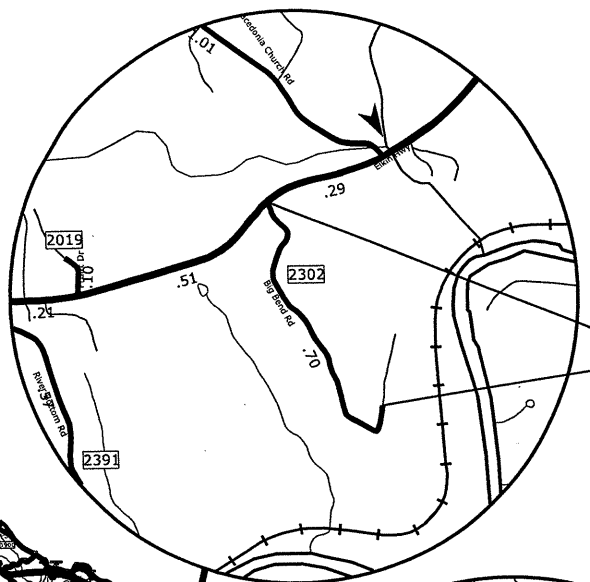
STATE OF NORTH CAROLINA  
DIVISION OF HIGHWAYS

**WILKES COUNTY**

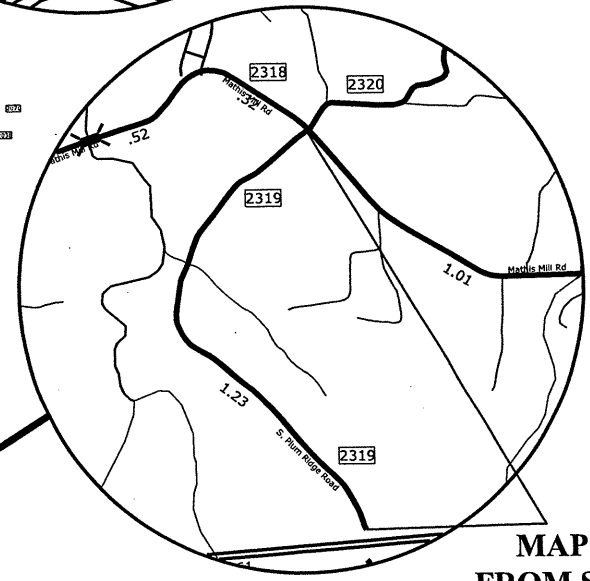
ASPHALT SURFACE TREATMENT



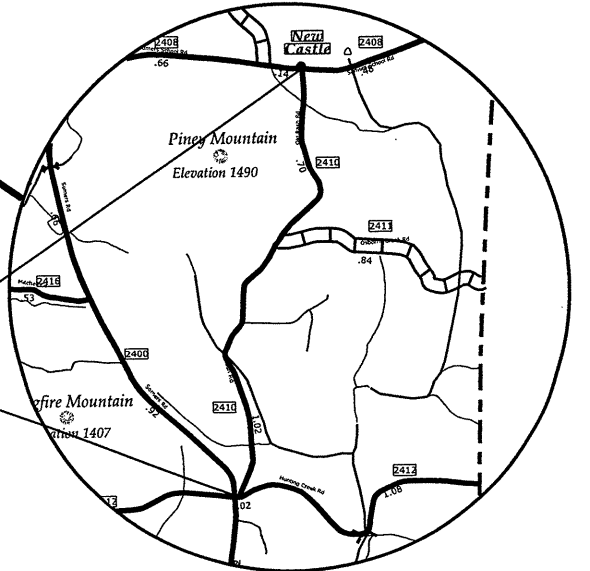
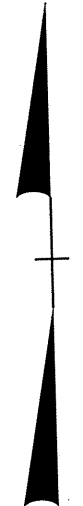
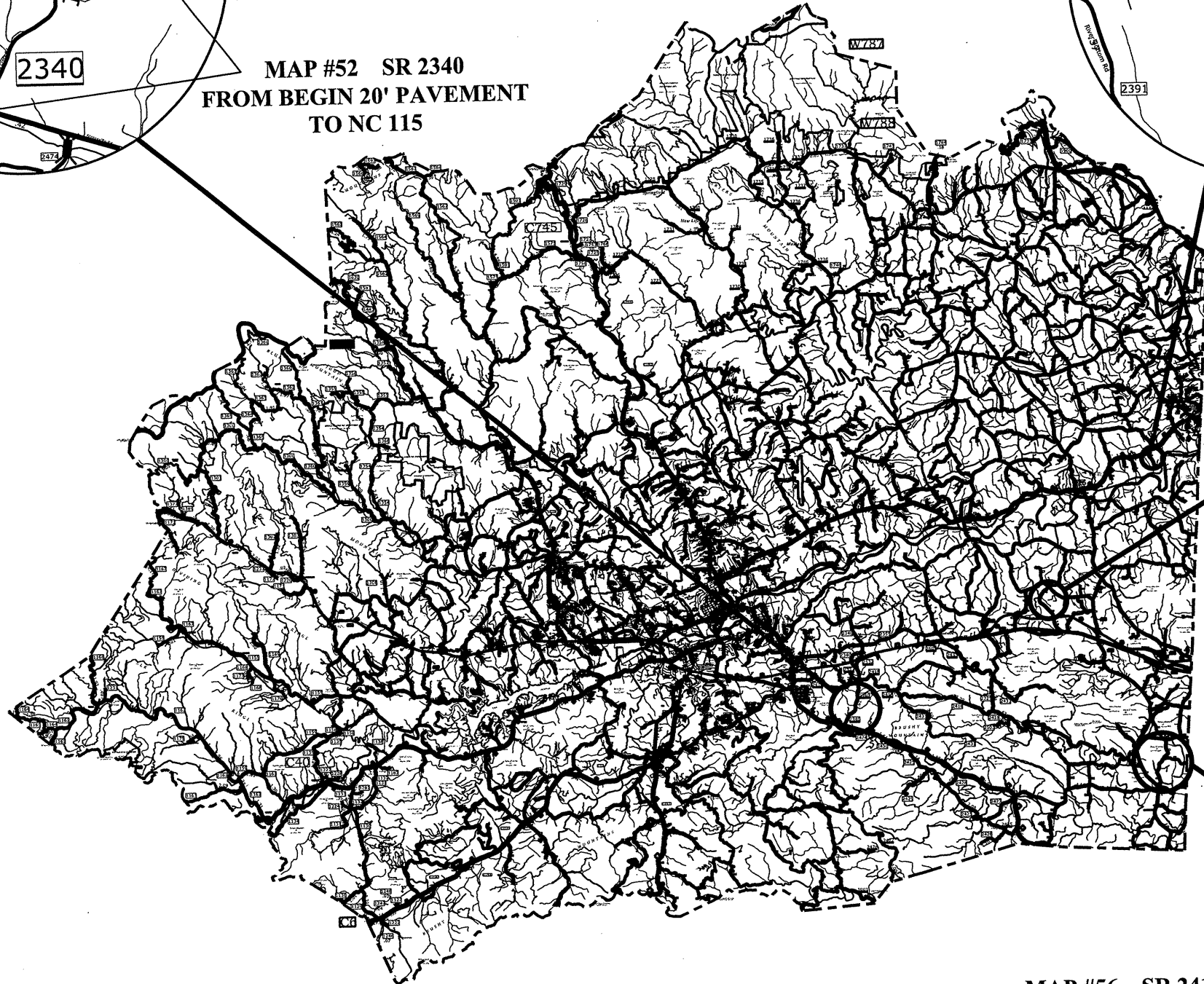
MAP #52 SR 2340  
FROM BEGIN 20' PAVEMENT  
TO NC 115



MAP #50 SR 2302  
FROM NC 268 TO EOM



MAP #51 SR 2319  
FROM SR 2318 TO EOM



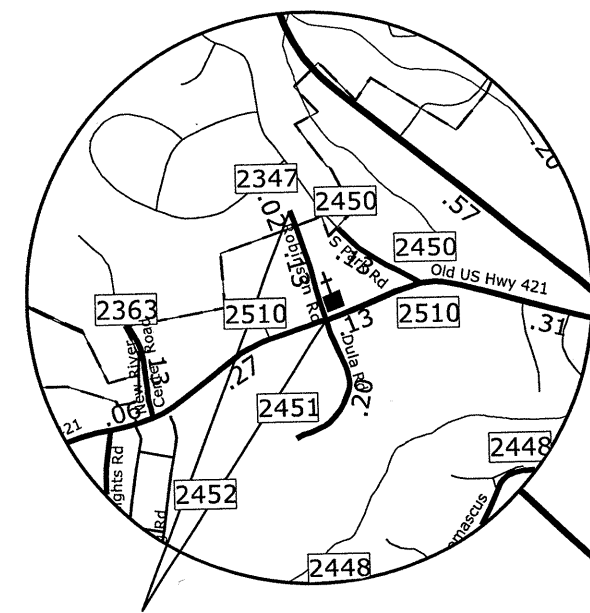
MAP #56 SR 2410  
FROM SR 2408 TO SR 2412

8/17/99

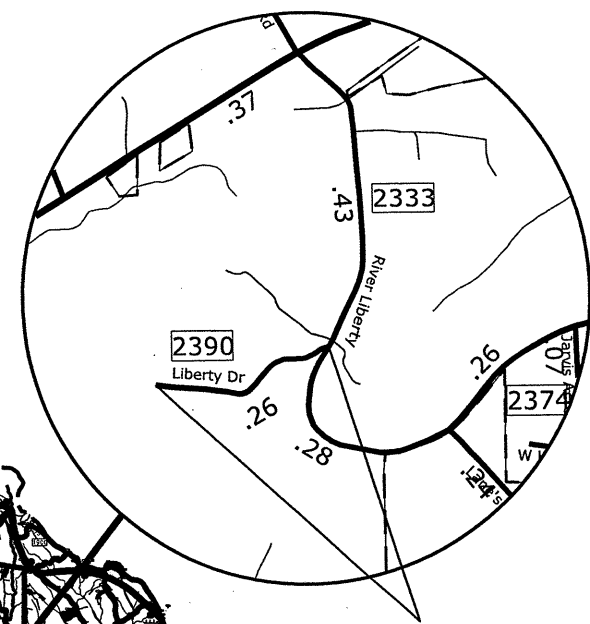
STATE OF NORTH CAROLINA  
DIVISION OF HIGHWAYS

**WILKES COUNTY**

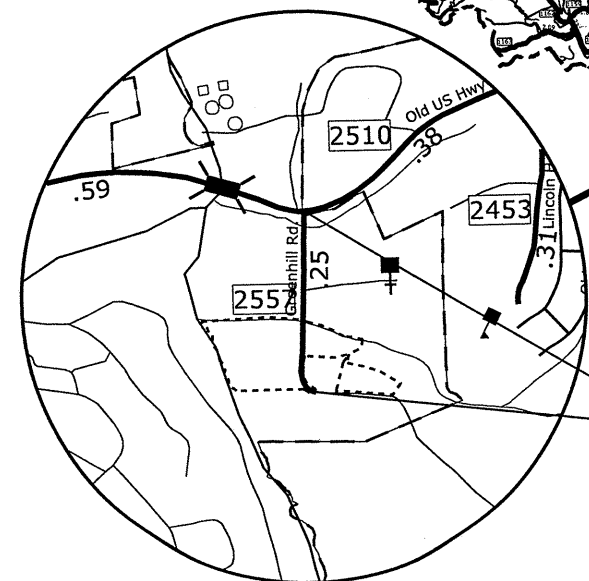
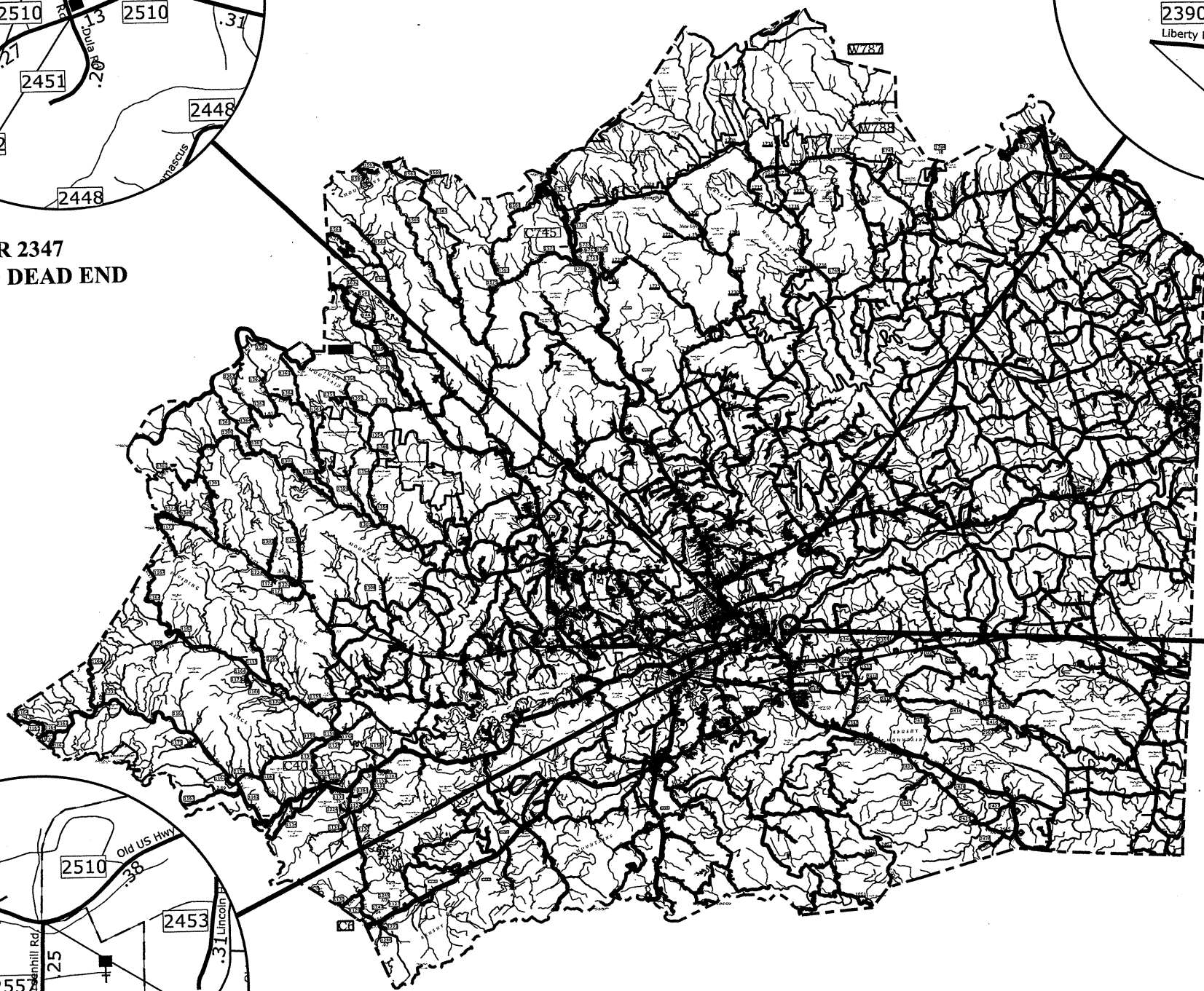
ASPHALT SURFACE TREATMENT



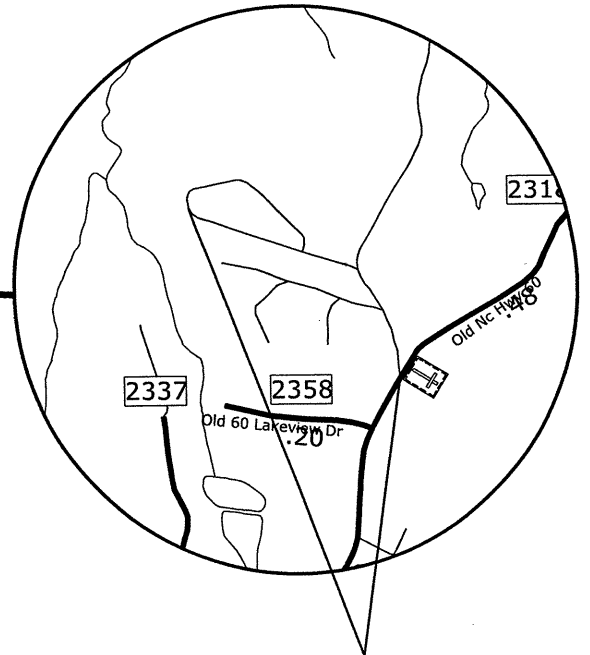
MAP #53 SR 2347  
FROM SR 2510 TO DEAD END



MAP #55 SR 2390  
FROM SR 2333 TO EOM



MAP #57 SR 2557  
FROM SR 2510 TO DEAD END



MAP #58 SR 2609  
FROM SR 2318 TO EOM

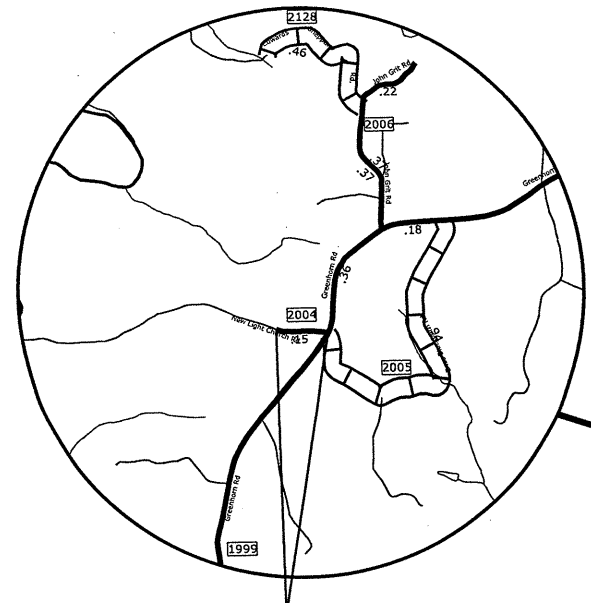


8/17/99

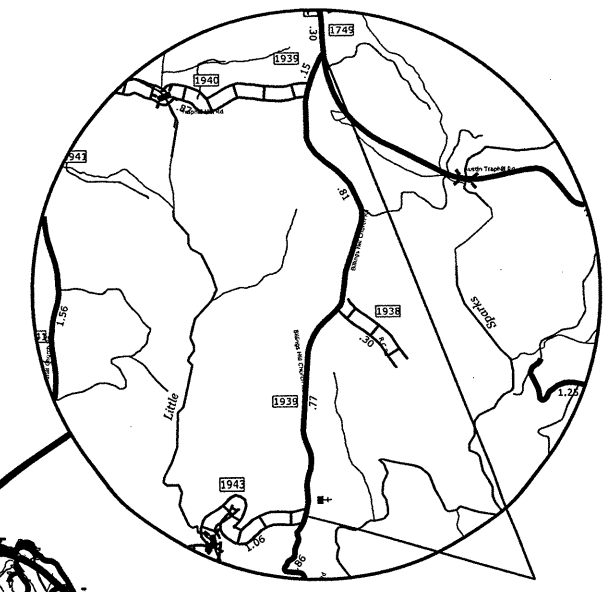
STATE OF NORTH CAROLINA  
DIVISION OF HIGHWAYS

**WILKES COUNTY**

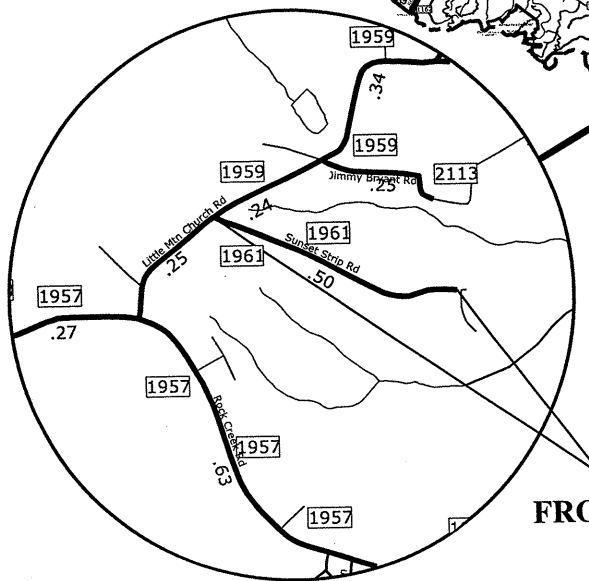
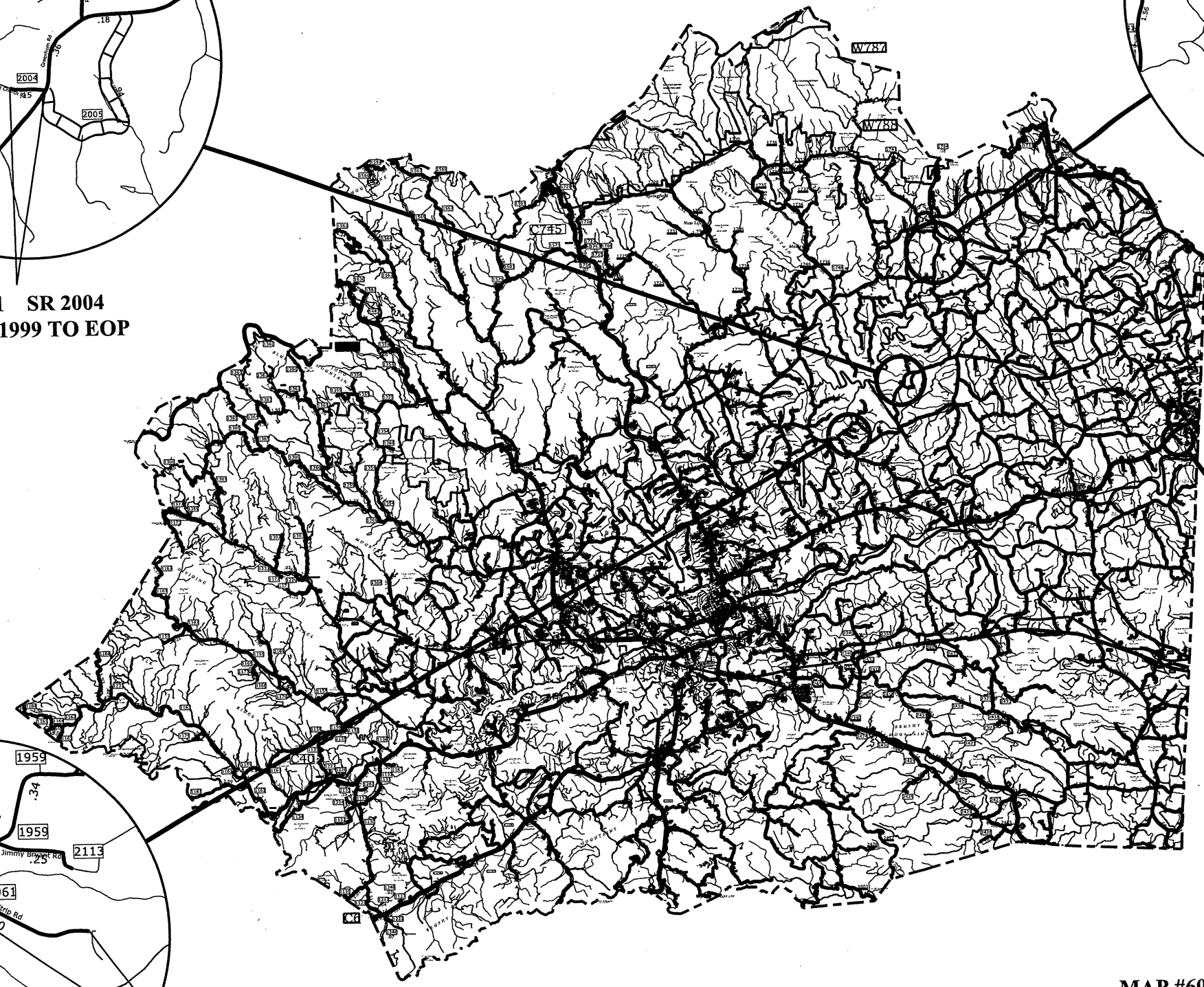
ASPHALT SURFACE TREATMENT



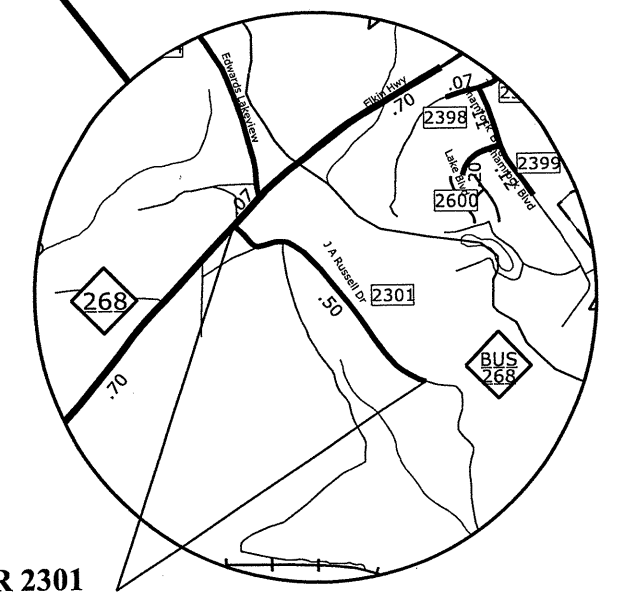
MAP #61 SR 2004  
FROM SR 1999 TO EOP



MAP #62 SR 1939  
FROM SR 1943 TO SR 1749



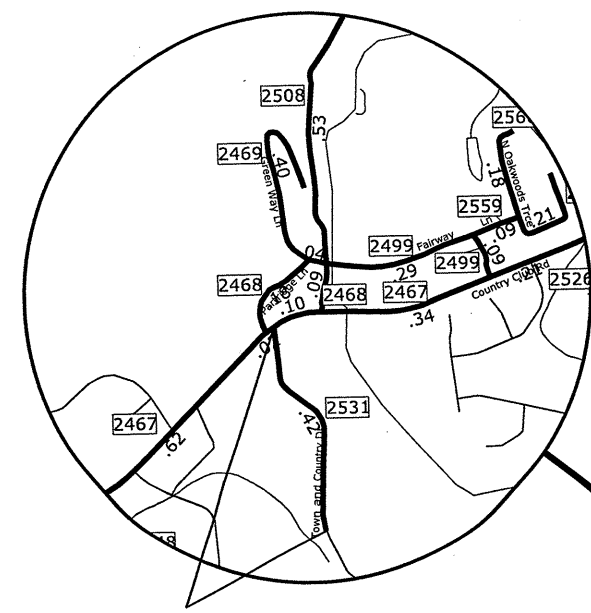
MAP #59 SR 1961  
FROM SR 1959 TO DEAD END



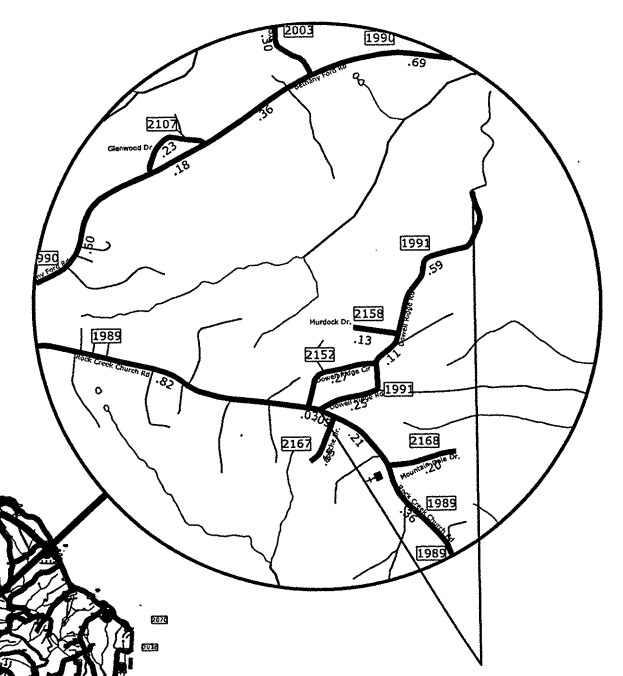
MAP #60 SR 2301  
FROM NC 268 TO DEAD END

8/17/99

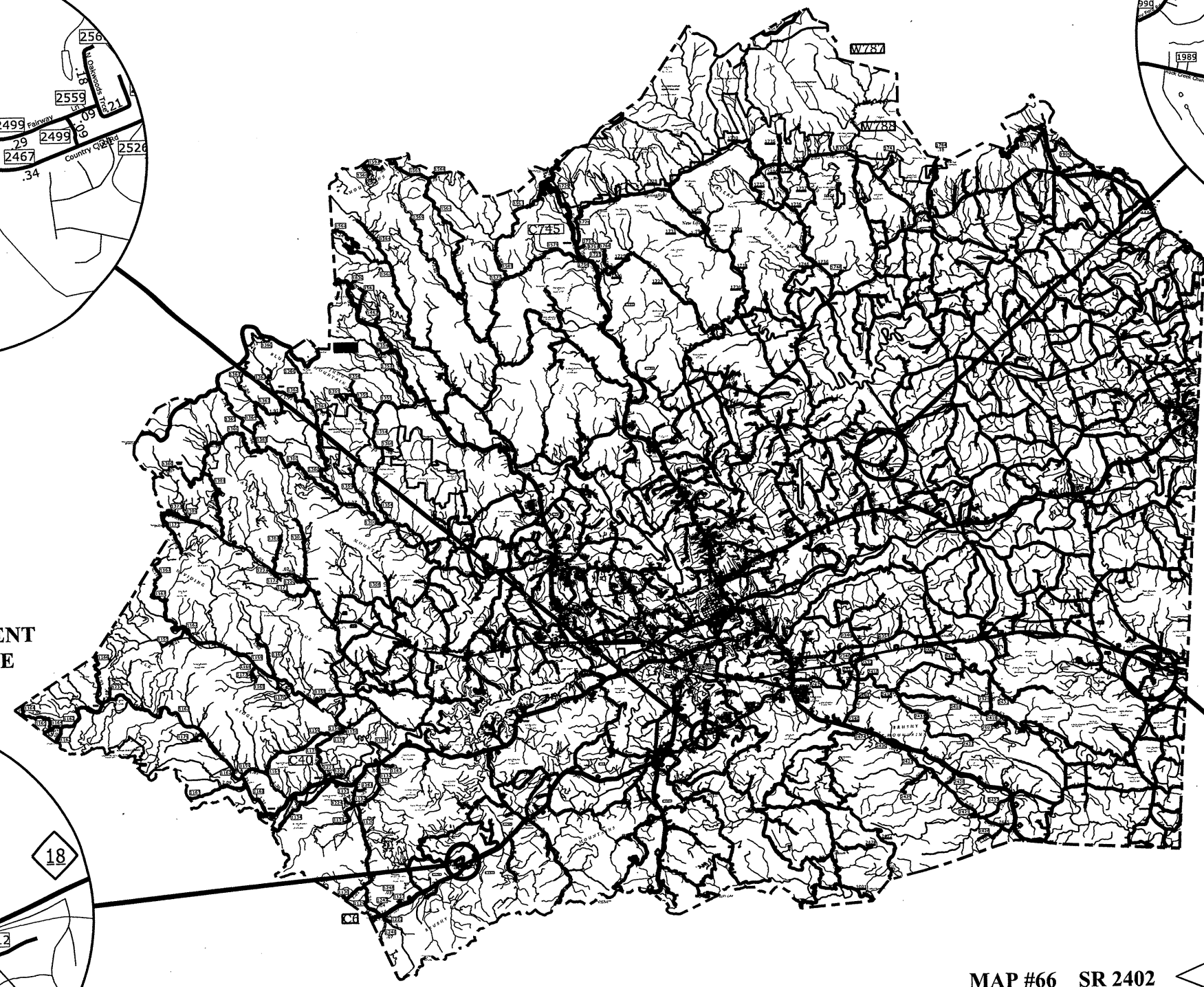
STATE OF NORTH CAROLINA  
DIVISION OF HIGHWAYS  
**WILKES COUNTY**  
ASPHALT SURFACE TREATMENT



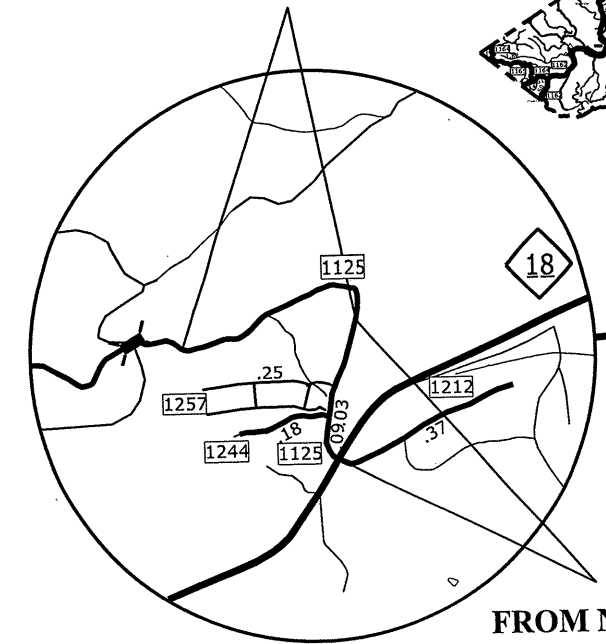
MAP #63 SR 2531  
FROM SR 2467 TO EOM



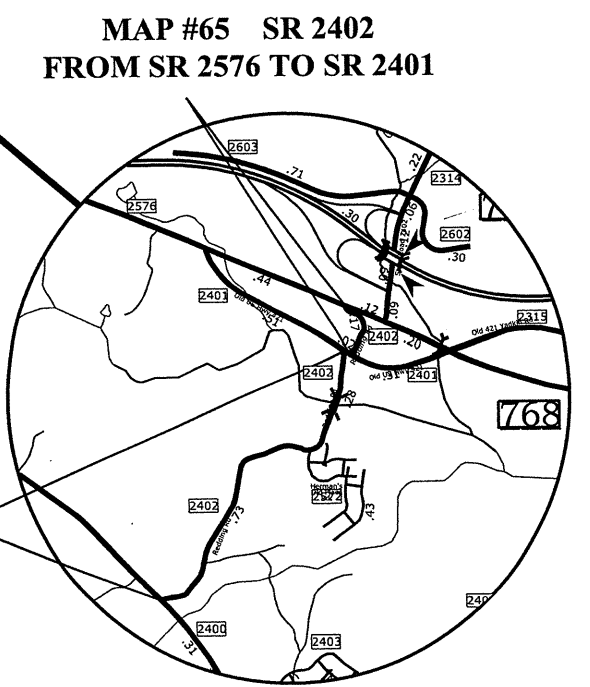
MAP #64 SR 1991  
FROM SR 1989 TO DEAD END



MAP #68 SR 1125  
FROM BEGIN 18' PAVEMENT  
TO PAVEMENT CHANGE



MAP #67 SR 1125  
FROM NC 18 TO END 16' PAVEMENT



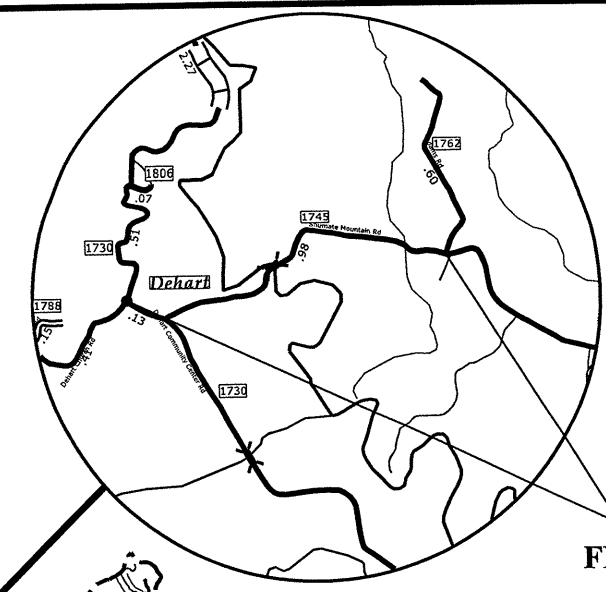
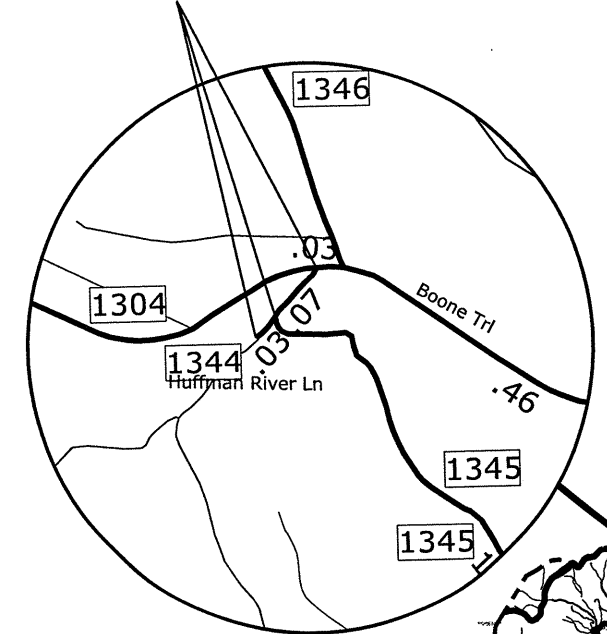
MAP #66 SR 2402  
FROM SR 2401 TO SR 2400

MAP #65 SR 2402  
FROM SR 2576 TO SR 2401

STATE OF NORTH CAROLINA  
DIVISION OF HIGHWAYS  
**WILKES COUNTY**  
ASPHALT SURFACE TREATMENT

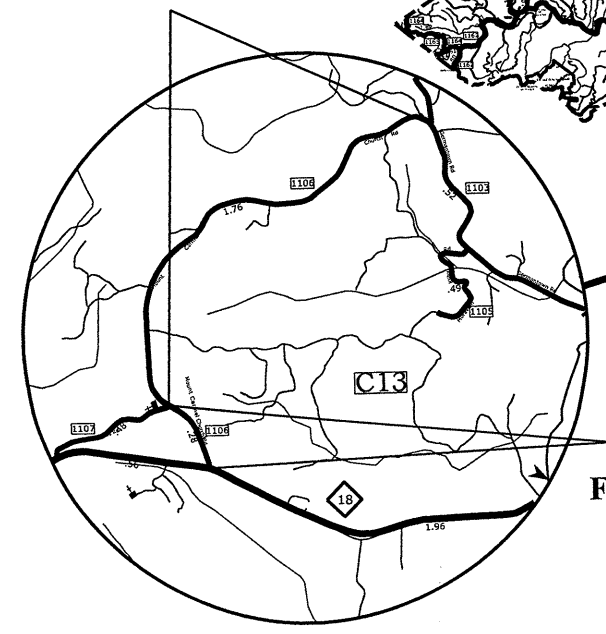
MAP #71 SR 1344  
FROM SR 1304 TO SR 1345

MAP #72 SR 1344  
FROM SR 1345 TO EOM



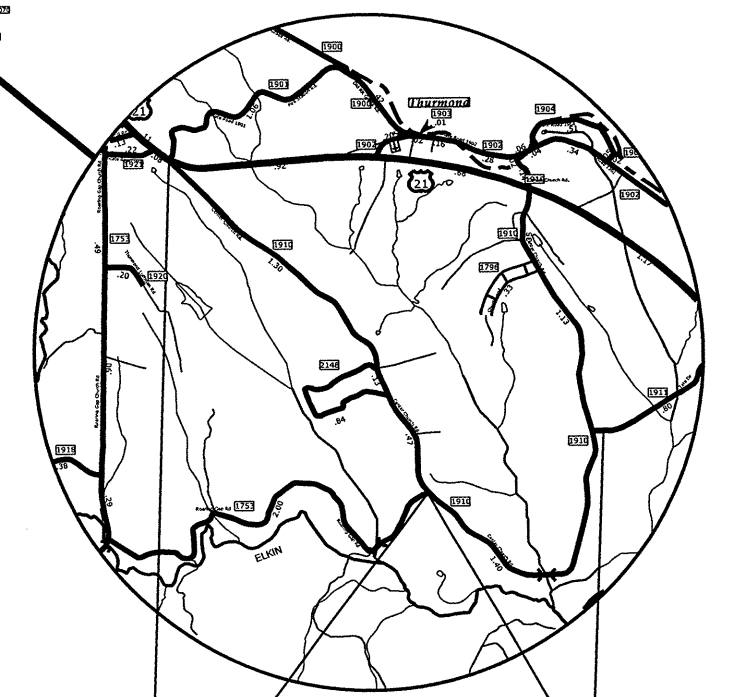
MAP #73 SR 1745  
FROM SR 1730 TO SR 1762

MAP #70 SR 1106  
FROM SR 1107 TO SR 1103

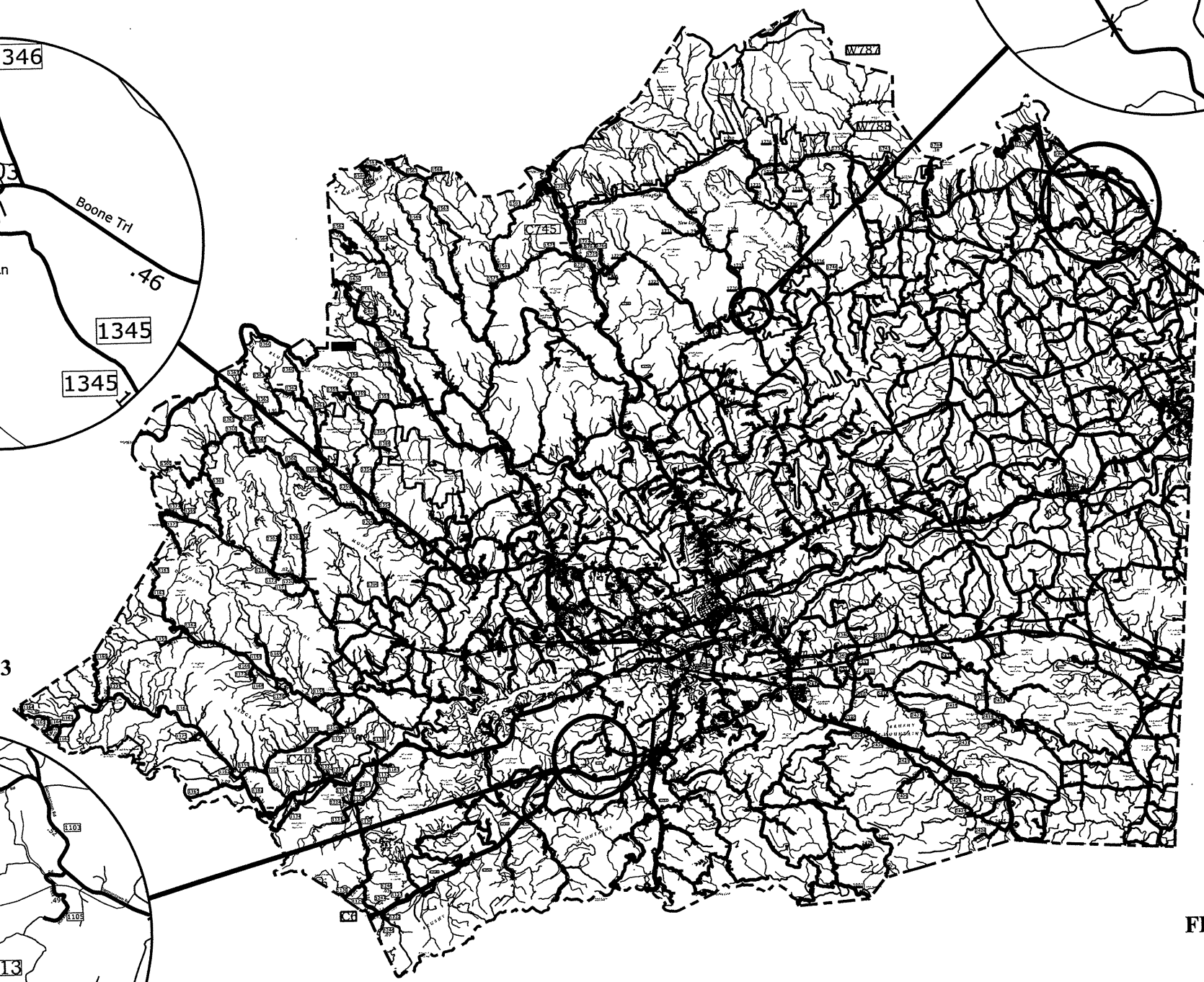


MAP #69 SR 1106  
FROM NC 18 TO SR 1107

MAP #74 SR 1910  
FROM US 21 TO SR 1917



MAP #75 SR 1910  
FROM SR 1917 TO SR 1911

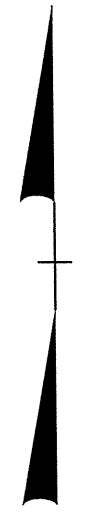


8/17/99

STATE OF NORTH CAROLINA  
DIVISION OF HIGHWAYS

**WILKES COUNTY**

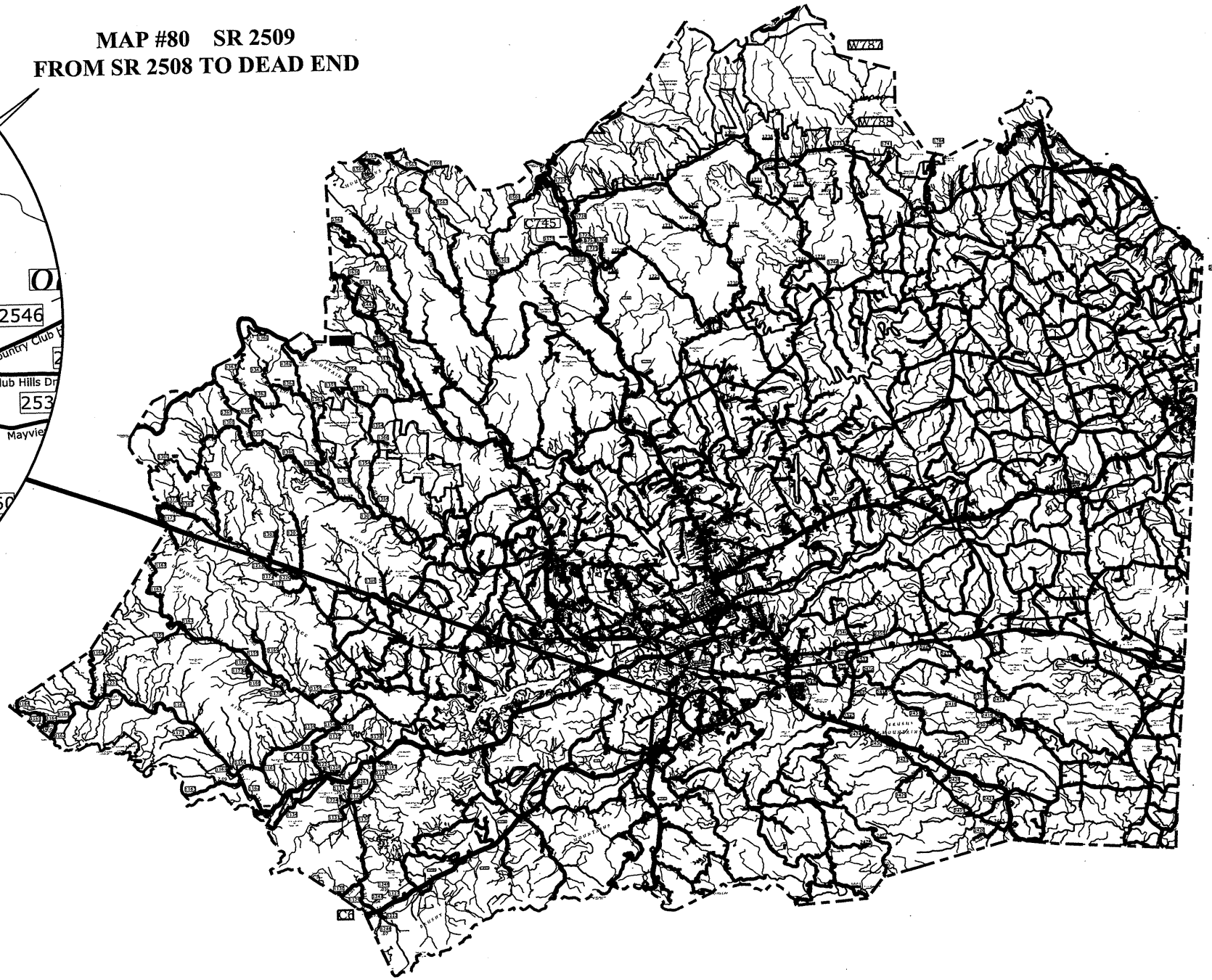
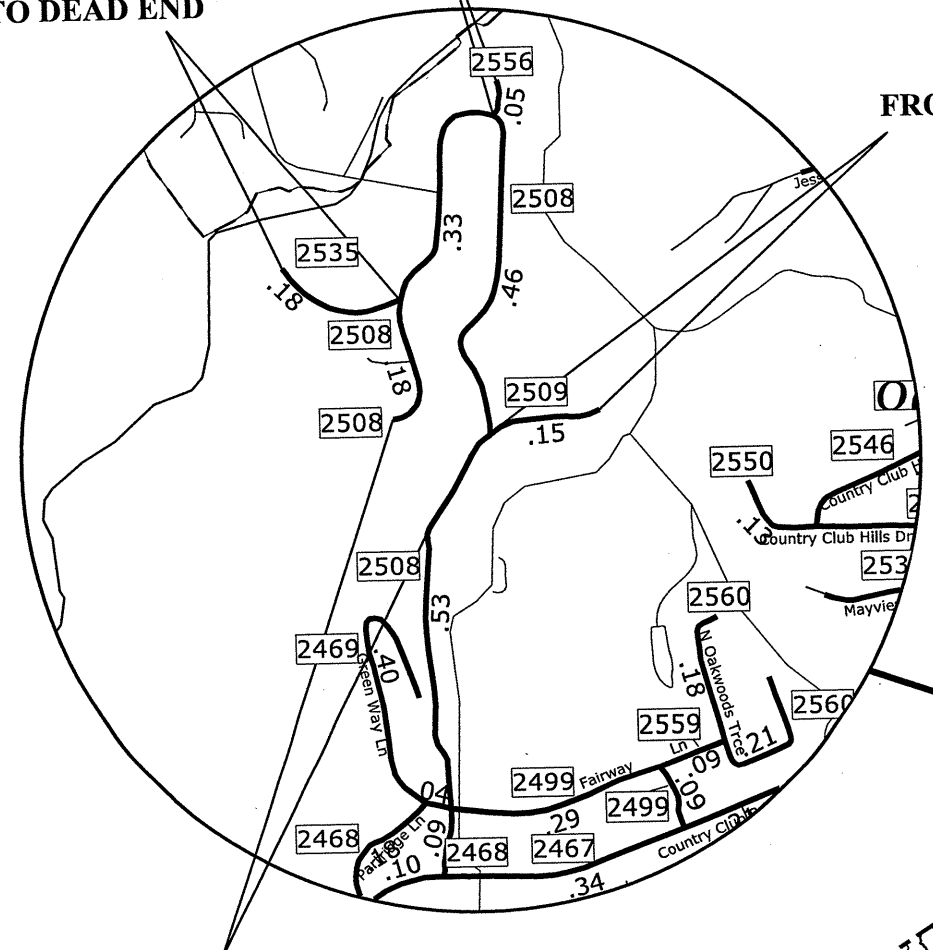
ASPHALT SURFACE TREATMENT



MAP #81 SR 2556  
FROM SR 2508  
TO DEAD END

MAP #82 SR 2535  
FROM SR 2508  
TO DEAD END

MAP #80 SR 2509  
FROM SR 2508 TO DEAD END



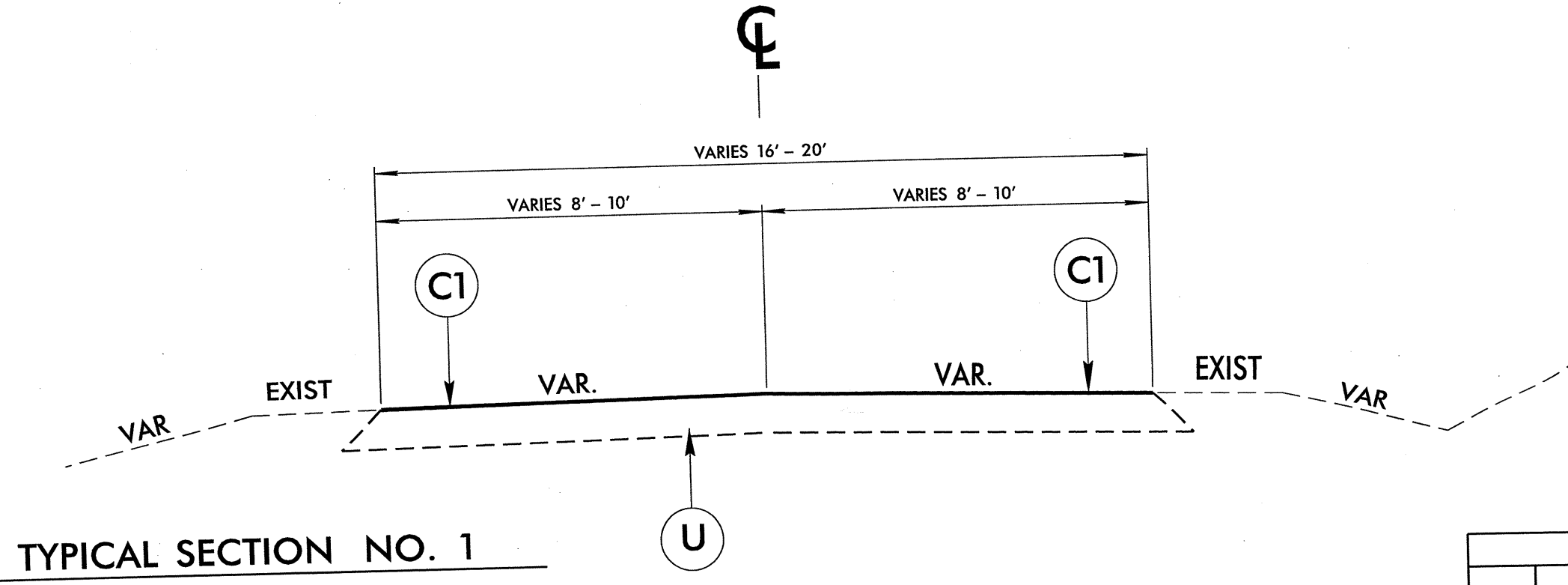
MAP #76 SR 2508  
FROM MP 0.43  
TO END 20' PAVEMENT

MAP #77 SR 2508  
FROM END 20' PAVEMENT  
TO END 18' PAVEMENT

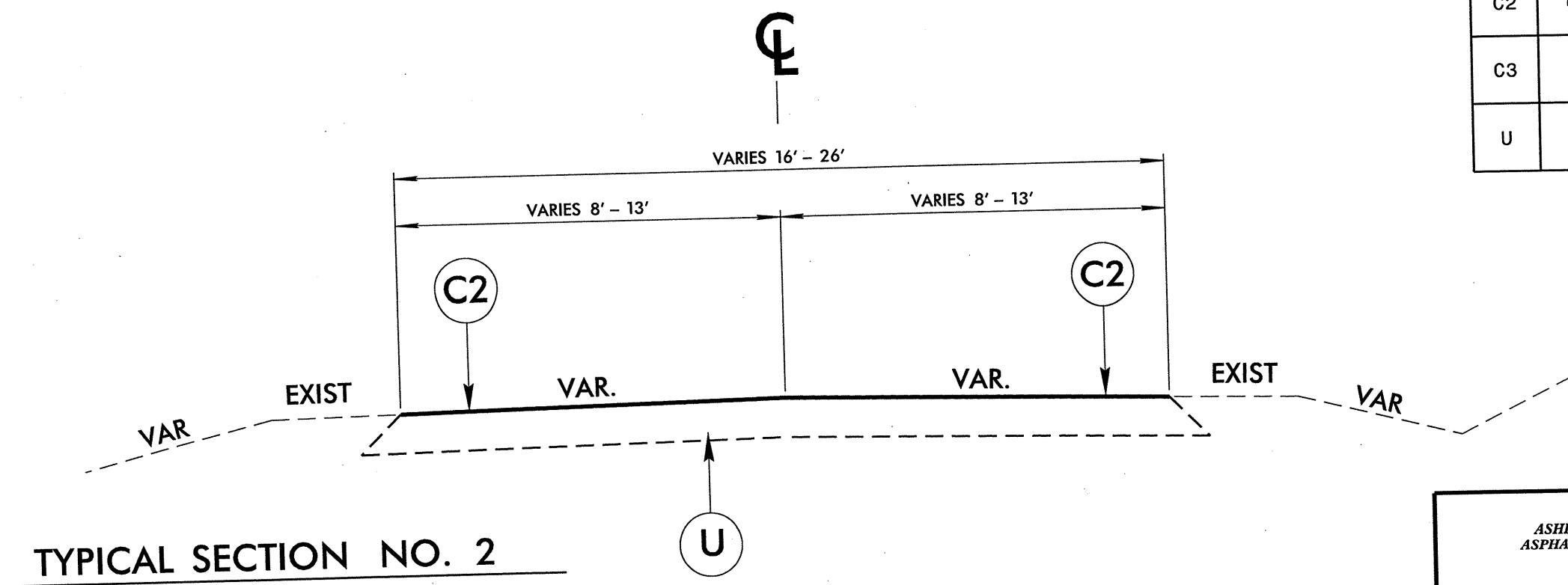
MAP #78 SR 2508  
FROM END 18' PAVEMENT  
TO END 26' PAVEMENT

MAP #79 SR 2508  
FROM BEGIN 20' PAVEMENT  
TO DEAD END

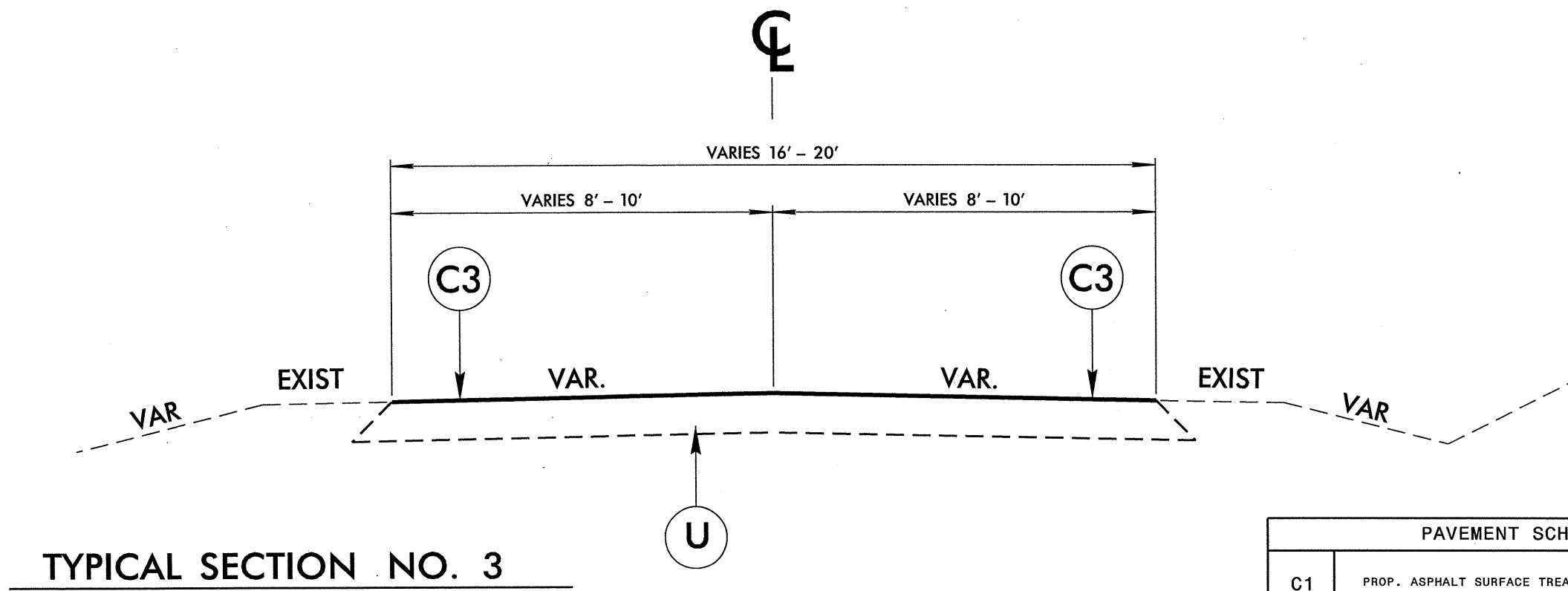
8/17/99



PAVEMENT SCHEDULE	
C1	PROP. ASPHALT SURFACE TREATMENT, MAT & SEAL
C2	PROP. ASPHALT SURFACE TREATMENT, TRIPLE SEAL
C3	PROP. ASPHALT SURFACE TREATMENT, SPLIT SEAL
U	EXISTING PAVEMENT



<b>ASHE &amp; WILKES COUNTIES ASPHALT SURFACE TREATMENT RESURFACING</b>			
DIVISION II			
REVISIONS	INT.	DATE	
N.C. DEPARTMENT of TRANSPORTATION DIVISION of HIGHWAYS DIVISION ELEVEN			SCALE: N/A    DATE: 1/2013 PREPARED BY: J. L. LAWS REVIEWED BY: REVIEWED BY:



PAVEMENT SCHEDULE	
C1	PROP. ASPHALT SURFACE TREATMENT, MAT & SEAL
C2	PROP. ASPHALT SURFACE TREATMENT, TRIPLE SEAL
C3	PROP. ASPHALT SURFACE TREATMENT, SPLIT SEAL
U	EXISTING PAVEMENT

<b>ASHE &amp; WILKES COUNTIES</b> <b>ASPHALT SURFACE TREATMENT</b> <b>RESURFACING</b>		
DIVISION II		
REVISIONS	INT.	DATE
<b>N.C. DEPARTMENT of TRANSPORTATION</b> <b>DIVISION of HIGHWAYS</b> <b>DIVISION ELEVEN</b>		SCALE: N/A    DATE: 1/2013 PREPARED BY: J. L. LAWS REVIEWED BY: REVIEWED BY:



PROJECT NO.	SHEET NO.	TOTAL NO.
11CR.20051.20, 11CR.20971.20		

### SUMMARY OF QUANTITIES

PROJECT NO	COUNTY	MAP NO	ROUTE	DESCRIPTION	TYP	FINAL SURFACE TESTING REQUIRED	LENGTH MI	WIDTH FT	ASPHALT SURFACE TREATMENT, MAT AND SEAL SY	ASPHALT SURFACE TREATMENT, SPLIT SEAL SY	ASPHALT SURFACE TREATMENT, TRIPLE SEAL SY
11CR.20051.20	Ashe	1	SR 1101	FROM SR 1100 TO EOM	1	NO	0.5	18	5,280		
		2	SR1103	FROM SR 1100 TO US 221	1	NO	4.09	20	47,989		
		3	SR 1111	FROM SR 1186 TO SR 1106	1	NO	1.32	20	15,488		
		4	SR 1111	FROM BEGIN PAVEMENT TO SR 1186	1	NO	1.4	18	14,784		
		5	SR 1123	FROM SR 1100 TO EOM	2	NO	0.39	16			3,661
		6	SR 1126	FROM SR 1127 TO SR 1191	1	NO	0.75	18	7,920		
		7	SR 1213	FROM SR 1111 TO EOM	1	NO	0.22	16	2,065		
		8	SR 1275	FROM SR 1111 TO EOM	1	NO	0.57	18	6,019		
		9	SR 1395	FROM SR 1302 TO SR 1305	1	NO	0.76	18	8,026		
		10	SR 1517	FROM SR 1500 TO NC 194	1	NO	2.18	18	23,021		
		11	SR 1519	FROM NC 194 TO SR 1516	1	NO	1.07	18	11,299		
		12	SR 1593	FROM US 221 TO SR 1595	1	NO	1.36	18	14,362		
		13	SR 1595	FROM SR 1596 TO SR 1599	2	NO	1.3	18			13,728
		14	SR 1599	FROM SR 1595 TO EOP	2	NO	1.7	20			19,947
		15	SR 1302	FROM TENNESSEE STATE LINE TO SR 1386	1	NO	1.96	18	20,698		
		16	SR 1516	FROM SR 1517 TO SR 1521	1	NO	1.94	18	20,486		
		17	SR 1622	FROM BLUE RIDGE PKWY TO NC 88	1	NO	1.49	20	17,483		
		18	SR 1627	FROM SR 1628 TO EOP	1	NO	0.93	18	9,821		
		19	SR 1628	FROM SR 1629 TO EOP	1	NO	0.68	20	7,979		
		20	SR 1628	FROM NC 16 TO SR 1627	2	NO	1.24	20			14,549
		21	SR 1628	FROM SR 1627 TO SR 1629	1	NO	1.37	20	16,075		
TOTAL FOR PROJ NO. 11CR.20051.20							27.22		248,795		51,885
11CR.20971.20	Wilkes	22	SR 1131	FROM NC 268 TO EOP	3	NO	1.08	18		11,405	
		23	SR 1131	FROM SR 1130 TO SR 1132	3	NO	0.12	20		1,408	
		24	SR 1134	FROM CALDWELL COUNTY LINE TO MP 1.96	3	NO	1.96	18	20,698		
		25	SR 1134	FROM MP 1.96 TO NC 268	3	NO	0.83	20		9,739	
		26	SR 1300	FROM SR 1301 TO BRIDGE	3	NO	1.5	18		15,840	
		27	SR 1300	FROM BRIDGE TO SR 1365	3	NO	2.01	18		21,226	
		28	SR 1300	FROM SR 1365 TO MP 8.30	3	NO	1.73	18		18,269	
		29	SR 1300	FROM MP 8.30 TO SR 1360	3	NO	2.3	18		24,288	
		30	SR 1303	FROM US 421 TO BRIDGE	3	NO	1.24	18		13,094	
		31	SR 1303	FROM BRIDGE TO DEAD END	3	NO	1.04	18		10,982	
		32	SR 1312	FROM SR 1311 TO US 421	3	NO	0.89	18		9,398	
		33	SR 1332	FROM SR 1372 TO SR 1333	3	NO	0.61	18		6,442	
		34	SR 1339	FROM SR 1372 TO SR 1337	2	NO	0.78	20			9,152
		35	SR 1428	FROM SR 1339 TO DEAD END	3	NO	0.1	16		939	
		36	SR 1540	FROM SR 1541 TO SR 1535	2	NO	2.61	18			27,562
		37	SR 1559	FROM SR 1570 TO SR 1562	3	NO	0.94	20		11,029	
		38	SR 1559	FROM SR 1562 TO NC 16	3	NO	1.54	18		16,262	
		39	SR 1564	FROM SR 1562 TO DEAD END	3	NO	1.79	16		16,802	
		40	SR 1735	FROM SR 1736 TO EOP	2	NO	1.36	18			14,362

PROJECT NO	COUNTY	MAP NO	ROUTE	DESCRIPTION	TYP	FINAL SURFACE TESTING REQUIRED	LENGTH MI	WIDTH FT	ASPHALT SURFACE TREATMENT, MAT AND SEAL SY	ASPHALT SURFACE TREATMENT, SPLIT SEAL SY	ASPHALT SURFACE TREATMENT, TRIPLE SEAL SY
11CR.20971.20	Wilkes	41	SR 1746	FROM SR 1736 TO MP 1.73	3	NO	1.73	18			18,269
		42	SR 1746	FROM MP 1.73 TO SR 1745	3	NO	1.69	18			17,846
		43	SR 1929	FROM SR 1924 TO SR 1928	3	NO	1.14	18			12,038
		44	SR 1965	FROM SR 1957 TO SR 1966	3	NO	1	18			10,560
		45	SR 1968	FROM SR 1966 TO DEAD END	3	NO	0.9	20			10,560
		46	SR 2027	FROM SR 2026 TO PAVEMENT CHANGE	3	NO	0.3	20			3,520
		47	SR 2027	FROM PAVEMENT CHANGE TO DEAD END	3	NO	0.3	16			2,816
		48	SR 2055	FROM SR 2051 TO SR 2026	3	NO	0.18	16			1,690
		49	SR 2157	FROM SR 1966 TO DEAD END	3	NO	0.16	18			1,690
		50	SR 2302	FROM NC 268 TO EOM	3	NO	0.7	18			7,392
		51	SR 2319	FROM SR 2318 TO EOM	3	NO	1.23	18			12,989
		52	SR 2340	FROM BEGIN 20' PAVEMENT TO NC 115	3	NO	1.48	20			17,365
		53	SR 2347	FROM SR 2510 TO DEAD END	3	NO	0.15	16			1,408
		54	SR 2380	FROM SR 2300 TO EOM	3	NO	0.1	20			1,173
		55	SR 2390	FROM SR 2333 TO EOM	3	NO	0.26	16			2,441
		56	SR 2410	FROM SR 2408 TO SR 2412	3	NO	1.72	18			18,163
		57	SR 2557	FROM SR 2510 TO DEAD END	3	NO	0.25	12			1,760
		58	SR 2609	FROM SR 2318 TO EOM	3	NO	0.62	18			6,547
		59	SR 1961	FROM SR 1959 TO DEAD END	3	NO	0.5	18			5,280
		60	SR 2301	FROM NC 268 TO DEAD END	3	NO	0.5	20			5,867
		61	SR 2004	FROM SR 1999 TO EOP	3	NO	0.15	18			1,584
		62	SR 1939	FROM SR 1943 TO SR 1749	3	NO	1.73	20			20,299
		63	SR 2531	FROM SR 2467 TO EOM	3	NO	0.42	18			4,435
		64	SR 1991	FROM SR 1989 TO DEAD END	3	NO	0.89	18			9,398
		65	SR 2402	FROM SR 2576 TO SR 2401	3	NO	0.17	18			1,795
		66	SR 2402	FROM SR 2401 TO SR 2400	3	NO	1.02	18			10,771
		67	SR 1125	FROM NC 18 TO END 16' PAVEMENT	3	NO	0.2	16			1,877
		68	SR 1125	FROM BEGIN 18' PAVEMENT TO PAVEMENT CHANGE	3	NO	0.5	18			5,280
		69	SR 1106	FROM NC 18 TO SR 1107	3	NO	0.28	18			2,957
		70	SR 1106	FROM SR 1107 TO SR 1103	3	NO	1.77	18			18,691
		71	SR 1344	FROM SR 1304 TO SR 1345	3	NO	0.07	18			739
		72	SR 1344	FROM SR 1345 TO EOM	3	NO	0.03	16			282
		73	SR 1745	FROM SR 1730 TO SR 1762	3	NO	0.98	18			10,349
		74	SR 1910	FROM US 21 TO SR 1753	3	NO	1.91	20			22,411
		75	SR 1910	FROM SR 1917 TO SR 1911	3	NO	1.4	20			16,427
		76	SR 2508	FROM MP 0.43 TO END 20' PAVEMENT	2	NO	0.25	20			2,933
		77	SR 2508	FROM END 20' PAVEMENT TO END 18' PAVEMENT	2	NO	0.24	18			2,534
		78	SR 2508	FROM END 18' PAVEMENT TO END 26' PAVEMENT	2	NO	0.43	26			6,559
		79	SR 2508	FROM BEGIN 20' PAVEMENT TO DEAD END	2	NO	0.15	20			1,760
		80	SR 2509	FROM SR 2508 TO DEAD END	3	NO	0.15	18			1,584
		81	SR 2556	FROM SR 2508 TO DEAD END	3	NO	0.05	20			821
		82	SR 2535	FROM SR 2508 TO DEAD END	3	NO	0.18	20			2,112
TOTAL FOR PROJ NO. 11CR.20971.20							52.31		0	499,007	64,862
GRAND TOTAL							79.53		248,795	499,007	116,747

PROJECT NO.	SHEET NO.	TOTAL NO.
11CR.20051.20, 11CR.2097		

### THERMOPLASTIC AND PAINT QUANTITIES

PROJECT NO	COUNTY	MAP NO	ROUTE	DESCRIPTION	LENGTH	WIDTH	481000000-E	481000000-E
							4" WHITE PAINT LF	4" YELLOW PAINT LF
11CR.20051.20	Ashe	1	SR 1101	FROM SR 1100 TO EOM	0.5	18		
		2	SR1103	FROM SR 1100 TO US 221	4.09	20	86,381	86,381
		3	SR 1111	FROM SR 1186 TO SR 1106	1.32	20	27,878	27,878
		4	SR 1111	FROM BEGIN PAVEMENT TO SR 1186	1.4	18	29,568	29,568
		5	SR 1123	FROM SR 1100 TO EOM	0.39	16		
		6	SR 1126	FROM SR 1127 TO SR 1191	0.75	18	15,840	15,840
		7	SR 1213	FROM SR 1111 TO EOM	0.22	16		
		8	SR 1275	FROM SR 1111 TO EOM	0.57	18		
		9	SR 1395	FROM SR 1302 TO SR 1305	0.76	18	16,051	16,051
		10	SR 1517	FROM SR 1500 TO NC 194	2.18	18	46,042	46,042
		11	SR 1519	FROM NC 194 TO SR 1516	1.07	18	22,598	22,598
		12	SR 1593	FROM US 221 TO SR 1595	1.36	18	28,723	28,723
		13	SR 1595	FROM SR 1596 TO SR 1599	1.3	18	27,456	27,456
		14	SR 1599	FROM SR 1595 TO EOP	1.7	20	35,904	35,904
		15	SR 1302	FROM TENNESSEE STATE LINE TO SR 1386	1.96	18	41,395	41,395
		16	SR 1516	FROM SR 1517 TO SR 1521	1.94	18	40,973	40,973
		17	SR 1622	FROM BLUE RIDGE PKWY TO NC 88	1.49	20	31,469	31,469
		18	SR 1627	FROM SR 1628 TO EOP	0.93	18		
		19	SR 1628	FROM SR 1629 TO EOP	0.68	20	14,362	14,362
		20	SR 1628	FROM NC 16 TO SR 1627	1.24	20	26,189	26,189
		21	SR 1628	FROM SR 1627 TO SR 1629	1.37	20	28,934	28,934
TOTAL FOR PROJ NO. 11CR.20051.20					27.22		519,763	519,763

PROJECT NO	COUNTY	MAP NO	ROUTE	DESCRIPTION	LENGTH	WIDTH	481000000-E	481000000-E
							4" WHITE PAINT LF	4" YELLOW PAINT LF
11CR.20971.20	Wilkes	22	SR 1131	FROM NC 268 TO EOP	1.08	18	22,810	22,810
		23	SR 1131	FROM SR 1130 TO SR 1132	0.12	20	2,534	2,534
		24	SR 1134	FROM CALDWELL COUNTY LINE TO MP 1.96	1.96	18	41,395	41,395
		25	SR 1134	FROM MP 1.96 TO NC 268	0.83	20	17,530	17,530
		26	SR 1300	FROM SR 1301 TO BRIDGE	1.5	18	31,680	31,680
		27	SR 1300	FROM BRIDGE TO SR 1365	2.01	18	42,451	42,451
		28	SR 1300	FROM SR 1365 TO MP 8.30	1.73	18	36,538	36,538
		29	SR 1300	FROM MP 8.30 TO SR 1360	2.3	18	48,576	48,576
		30	SR 1303	FROM US 421 TO BRIDGE	1.24	18	26,189	26,189
		31	SR 1303	FROM BRIDGE TO DEAD END	1.04	18	21,965	21,965
		32	SR 1312	FROM SR 1311 TO US 421	0.89	18	18,797	18,797
		33	SR 1332	FROM SR 1372 TO SR 1333	0.61	18	12,883	12,883
		34	SR 1339	FROM SR 1372 TO SR 1337	0.78	20	16,474	16,474
		35	SR 1428	FROM SR 1339 TO DEAD END	0.1	16		
		36	SR 1540	FROM SR 1541 TO SR 1535	2.61	18	55,123	55,123
		37	SR 1559	FROM SR 1570 TO SR 1562	0.94	20	19,853	19,853
		38	SR 1559	FROM SR 1562 TO NC 16	1.54	18	32,525	32,525
		39	SR 1564	FROM SR 1562 TO DEAD END	1.79	16	37,805	37,805
		40	SR 1735	FROM SR 1736 TO EOP	1.36	18	28,723	28,723
		41	SR 1746	FROM SR 1736 TO MP 1.73	1.73	18	36,538	36,538
		42	SR 1746	FROM MP 1.73 TO SR 1745	1.69	18	35,693	35,693
		43	SR 1929	FROM SR 1924 TO SR 1928	1.14	18	24,077	24,077
		44	SR 1965	FROM SR 1957 TO SR 1966	1	18	21,120	21,120
		45	SR 1968	FROM SR 1966 TO DEAD END	0.9	20	19,008	19,008
		46	SR 2027	FROM SR 2026 TO PAVEMENT CHANGE	0.3	20		
		47	SR 2027	FROM PAVEMENT CHANGE TO DEAD END	0.3	16		
		48	SR 2055	FROM SR 2051 TO SR 2026	0.18	16		
		49	SR 2157	FROM SR 1966 TO DEAD END	0.16	18		
		50	SR 2302	FROM NC 268 TO EOM	0.7	18		
		51	SR 2319	FROM SR 2318 TO EOM	1.23	18	25,978	25,978
		52	SR 2340	FROM BEGIN 20' PAVEMENT TO NC 115	1.48	20	31,258	31,258
		50	SR 2302	FROM NC 268 TO EOM	0.7	18		
		51	SR 2319	FROM SR 2318 TO EOM	1.23	18	25,978	25,978
		52	SR 2340	FROM BEGIN 20' PAVEMENT TO NC 115	1.48	20	31,258	31,258

PROJECT NO	COUNTY	MAP NO	ROUTE	DESCRIPTION	LENGTH	WIDTH	481000000-E	481000000-E
							4" WHITE PAINT LF	4" YELLOW PAINT LF
11CR.20971.20	Wilkes	53	SR 2347	FROM SR 2510 TO DEAD END	0.15	16		
		54	SR 2380	FROM SR 2300 TO EOM	0.1	20		
		55	SR 2390	FROM SR 2333 TO EOM	0.26	16		
		56	SR 2410	FROM SR 2408 TO SR 2412	1.72	18	36,326	36,326
		57	SR 2557	FROM SR 2510 TO DEAD END	0.25	12		
		58	SR 2609	FROM SR 2318 TO EOM	0.62	18		
		59	SR 1961	FROM SR 1959 TO DEAD END	0.5	18	10,560	10,560
		60	SR 2301	FROM NC 268 TO DEAD END	0.5	20		
		61	SR 2004	FROM SR 1999 TO EOP	0.15	18		
		62	SR 1939	FROM SR 1943 TO SR 1749	1.73	20	36,538	36,538
		63	SR 2531	FROM SR 2467 TO EOM	0.42	18		
		64	SR 1991	FROM SR 1989 TO DEAD END	0.89	18	18,797	18,797
		65	SR 2402	FROM SR 2576 TO SR 2401	0.17	18	3,590	3,590
		66	SR 2402	FROM SR 2401 TO SR 2400	1.02	18	21,542	21,542
		67	SR 1125	FROM NC 18 TO END 16' PAVEMENT	0.2	16	4,224	4,224
		68	SR 1125	FROM BEGIN 18' PAVEMENT TO PAVEMENT CHANGE	0.5	18	10,560	10,560
		69	SR 1106	FROM NC 18 TO SR 1107	0.28	18	5,914	5,914
		70	SR 1106	FROM SR 1107 TO SR 1103	1.77	18	37,382	37,382
		71	SR 1344	FROM SR 1304 TO SR 1345	0.07	18	1,478	1,478
		72	SR 1344	FROM SR 1345 TO EOM	0.03	16		
		73	SR 1745	FROM SR 1730 TO SR 1762	0.98	18	20,698	20,698
		74	SR 1910	FROM US 21 TO SR 1753	1.91	20	40,339	40,339
		75	SR 1910	FROM SR 1917 TO SR 1911	1.4	20	29,568	29,568
		76	SR 2508	FROM MP 0.43 TO END 20' PAVEMENT	0.25	20	5,280	5,280
		77	SR 2508	FROM END 20' PAVEMENT TO END 18' PAVEMENT	0.24	18	5,069	5,069
		78	SR 2508	FROM END 18' PAVEMENT TO END 26' PAVEMENT	0.43	26		9,082
		79	SR 2508	FROM BEGIN 20' PAVEMENT TO DEAD END	0.15	20	3,168	3,168
		80	SR 2509	FROM SR 2508 TO DEAD END	0.15	18		
		81	SR 2556	FROM SR 2508 TO DEAD END	0.05	28		
		82	SR 2535	FROM SR 2508 TO DEAD END	0.18	20		
TOTAL FOR PROJ NO. 11CR.20971.20					52.31		998,556	1,007,638
GRAND TOTAL					79.53		1,518,319	1,527,401