

09/08/99

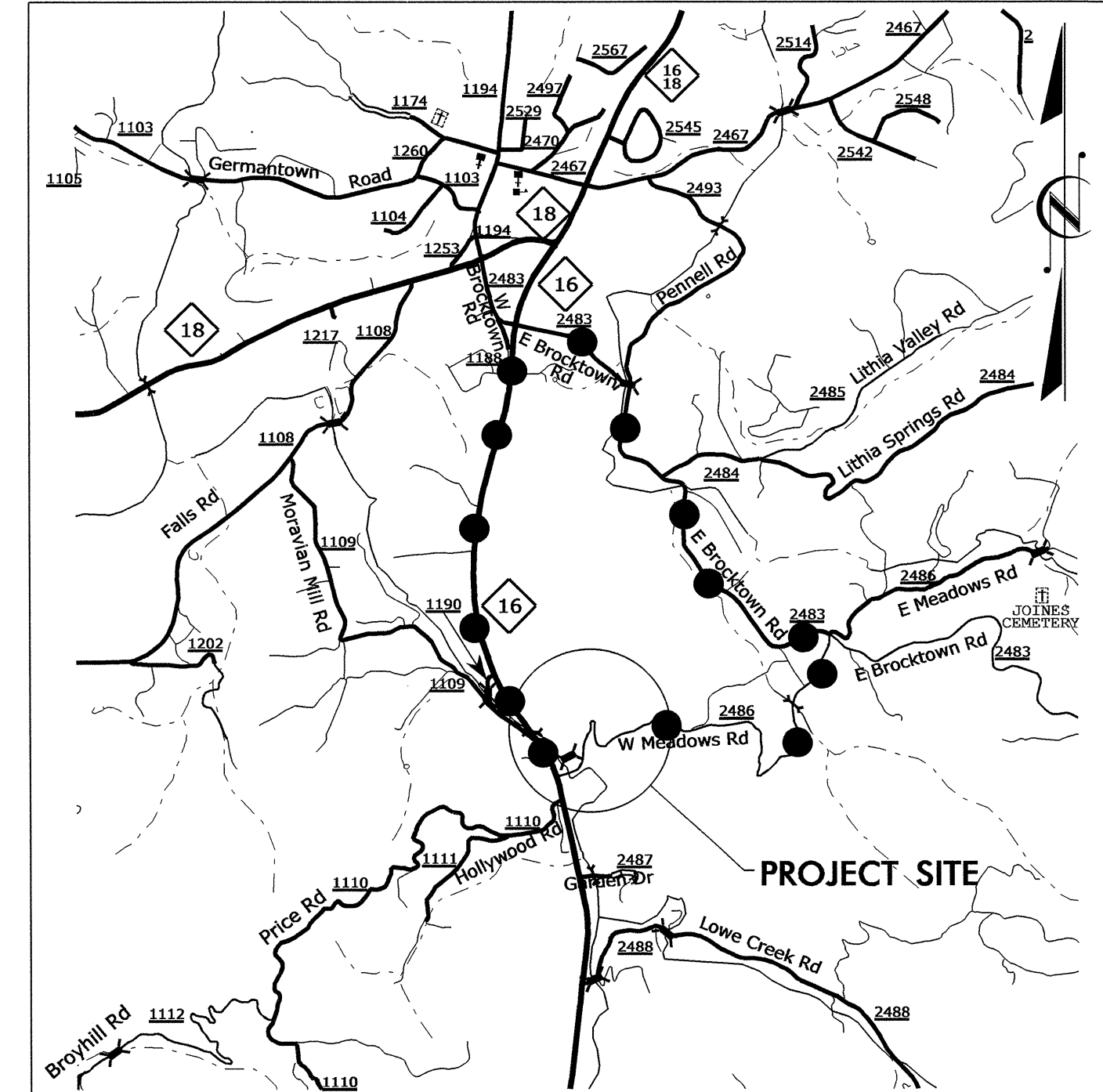
T.I.P. NO.	SHEET NO.
B-4847	UO-1

STATE OF NORTH CAROLINA
DIVISION OF HIGHWAYS

**UTILITIES BY OTHERS PLANS
WILKES COUNTY**

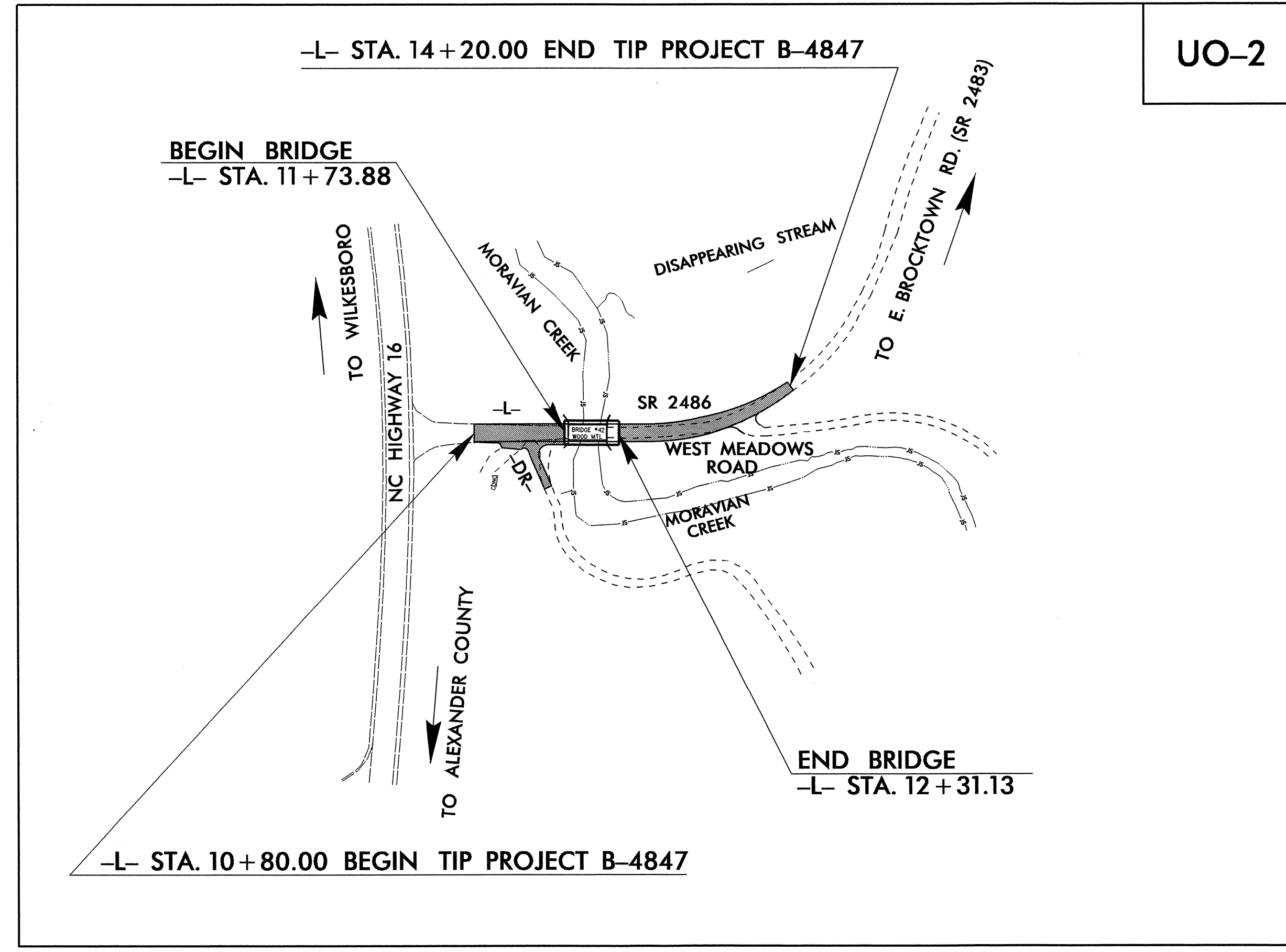
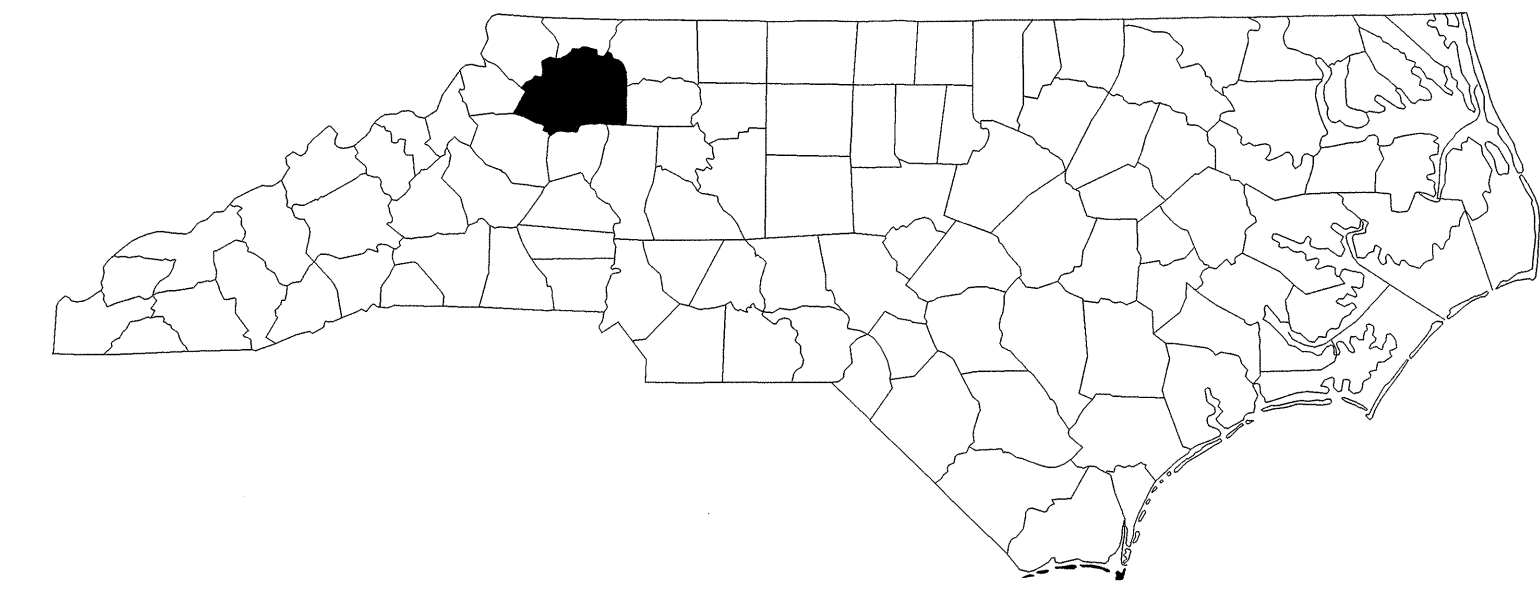
LOCATION: REPLACE BRIDGE 42 OVER MORAVIAN CREEK ON SR 2486
TYPE OF WORK: AERIAL TELEPHONE RELOCATION

TIP PROJECT: B-4847

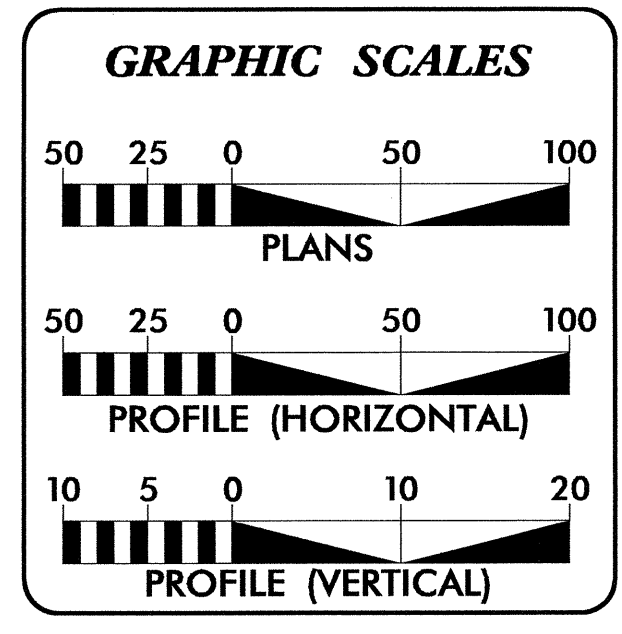
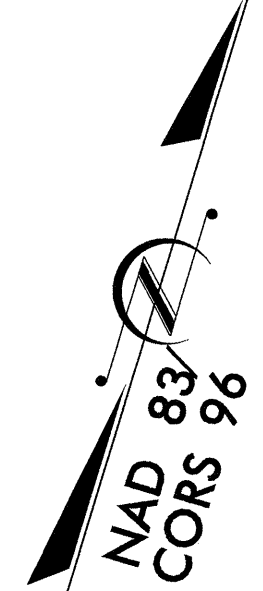


VICINITY MAP

OFFSITE DETOUR



UO-2

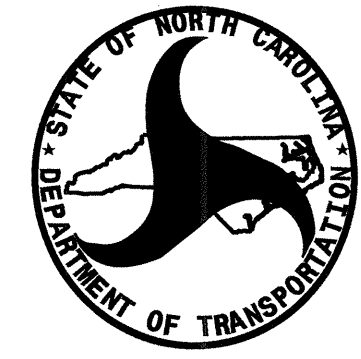


INDEX OF SHEETS

SHEET NO.	DESCRIPTION
UO-1	TITLE SHEET
UO-2	UTILITY BY OTHERS PLAN SHEET

UTILITY OWNER ON PROJECT

(1) TELEPHONE - CENTURY LINK



PREPARED IN THE OFFICE OF:
**DIVISION OF HIGHWAYS
UTILITIES ENGINEERING
SECTION**

1555 MAIL SERVICES CENTER
RALEIGH NC 27699-1555
PHONE (919) 707-6690
FAX (919) 250-4151

Roger Worthington, P.E. UTILITIES SECTION ENGINEER
Carl A. Barclay, P.E. UTILITIES SQUAD LEADER PROJECT ENGINEER
James E. Swinson UTILITIES PROJECT DESIGNER

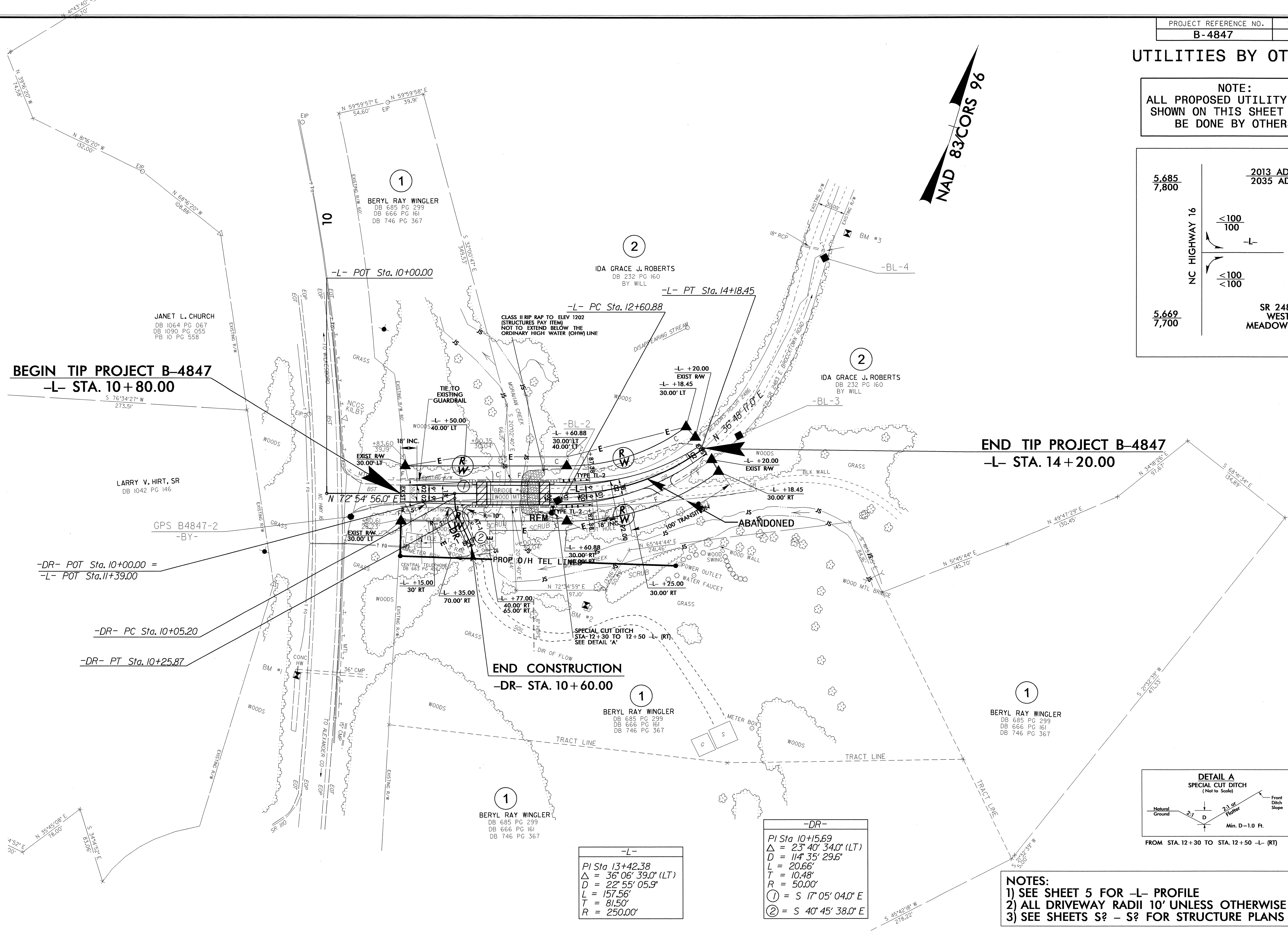
27-SEP-2012 13:52 R:\Utilities\RDV\Ut\Proj\B-4847_Ut_Title_UO1.psh.dgn \$\$\$USERNAME\$\$\$

UTILITIES BY OTHERS

NOTE:
ALL PROPOSED UTILITY WORK SHOWN ON THIS SHEET WILL BE DONE BY OTHERS

NC HIGHWAY 16	5,685 7,800	2013 ADT 2035 ADT
	<100 100	<100 100
	<100 <100	<100 100
	5,669 7,700	SR 2486 WEST MEADOWS RD.

NAD 83 CORRS 96



BEGIN TIP PROJECT B-4847
-L- STA. 10+80.00

END TIP PROJECT B-4847
-L- STA. 14+20.00

END CONSTRUCTION
-DR- STA. 10+60.00

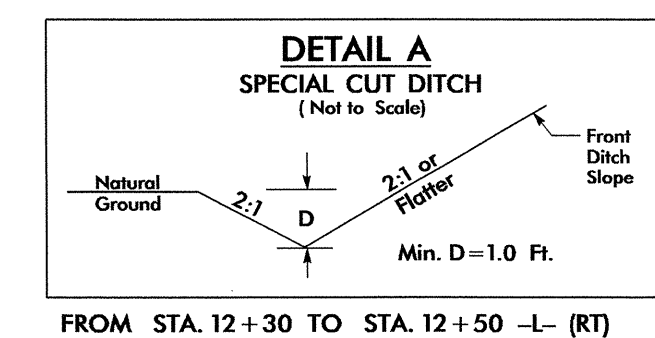
-DR- POT Sta. 10+00.00 =
-L- POT Sta. 11+39.00

-DR- PC Sta. 10+05.20

-DR- PT Sta. 10+25.87

-L-
PI Sta 13+42.38
Δ = 36° 06' 39.0" (LT)
D = 22° 55' 05.9"
L = 157.56'
T = 81.50'
R = 250.00'

-DR-
PI Sta 10+15.69
Δ = 23° 40' 34.0" (LT)
D = 114° 35' 29.6"
L = 20.66'
T = 10.48'
R = 50.00'
① = S 17° 05' 04.0" E
② = S 40° 45' 38.0" E



NOTES:
1) SEE SHEET 5 FOR -L- PROFILE
2) ALL DRIVEWAY RADII 10' UNLESS OTHERWISE NOTED
3) SEE SHEETS S? - S? FOR STRUCTURE PLANS

5/14/99
27-SEP-2012 12:26
R:\Utilities\Projects\B-4847_UO-2.psh.dgn
B-4847_UO-2.dwg