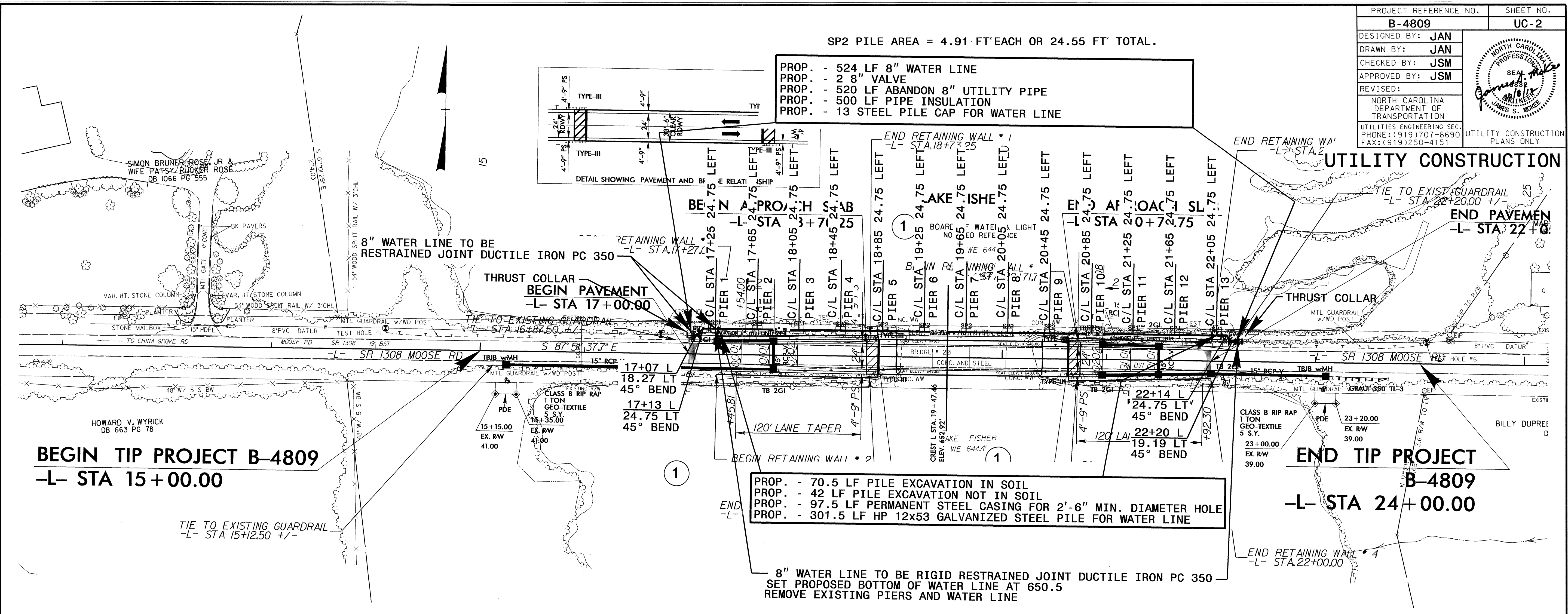


| | |
|--|-------------|
| PROJECT REFERENCE NO. | SHEET NO. |
| B-4809 | UC-2 |
| DESIGNED BY: JAN | |
| DRAWN BY: JAN | |
| CHECKED BY: JSM | |
| APPROVED BY: JSM | |
| REVISED: | |
| NORTH CAROLINA DEPARTMENT OF TRANSPORTATION | |
| UTILITIES ENGINEERING SEC. PHONE: (919)707-6690 FAX: (919)250-4151 | |
| UTILITY CONSTRUCTION PLANS ONLY | |

SP2 PILE AREA = 4.91 FT' EACH OR 24.55 FT' TOTAL.

- PROP. - 524 LF 8" WATER LINE
- PROP. - 2 8" VALVE
- PROP. - 520 LF ABANDON 8" UTILITY PIPE
- PROP. - 500 LF PIPE INSULATION
- PROP. - 13 STEEL PILE CAP FOR WATER LINE

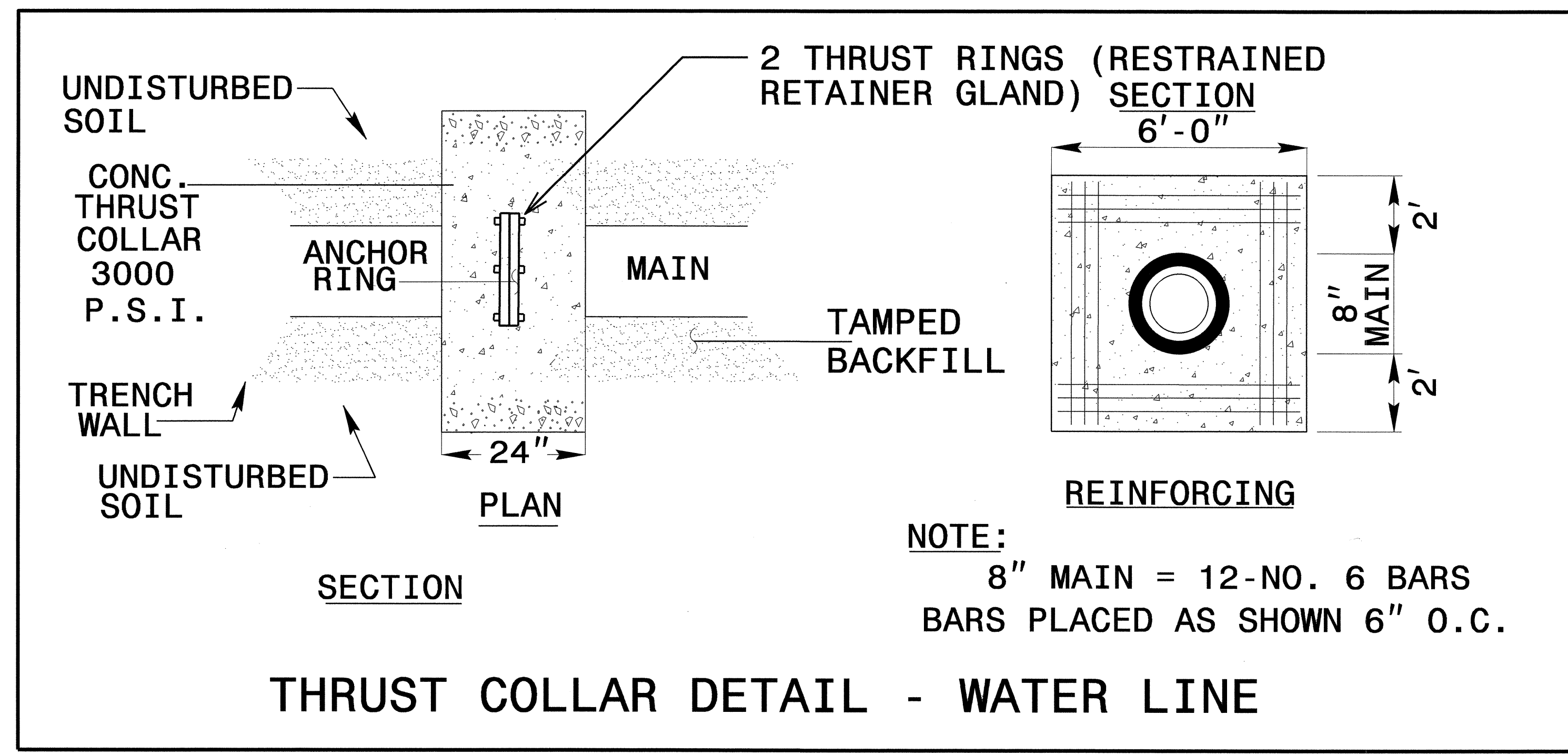


BEGIN TIP PROJECT B-4809
 -L- STA 15+00.00

END TIP PROJECT B-4809
 -L- STA 24+00.00

- PROP. - 70.5 LF PILE EXCAVATION IN SOIL
- PROP. - 42 LF PILE EXCAVATION NOT IN SOIL
- PROP. - 97.5 LF PERMANENT STEEL CASING FOR 2'-6" MIN. DIAMETER HOLE
- PROP. - 301.5 LF HP 12x53 GALVANIZED STEEL PILE FOR WATER LINE

8" WATER LINE TO BE RIGID RESTRAINED JOINT DUCTILE IRON PC 350
 SET PROPOSED BOTTOM OF WATER LINE AT 650.5
 REMOVE EXISTING PIERS AND WATER LINE

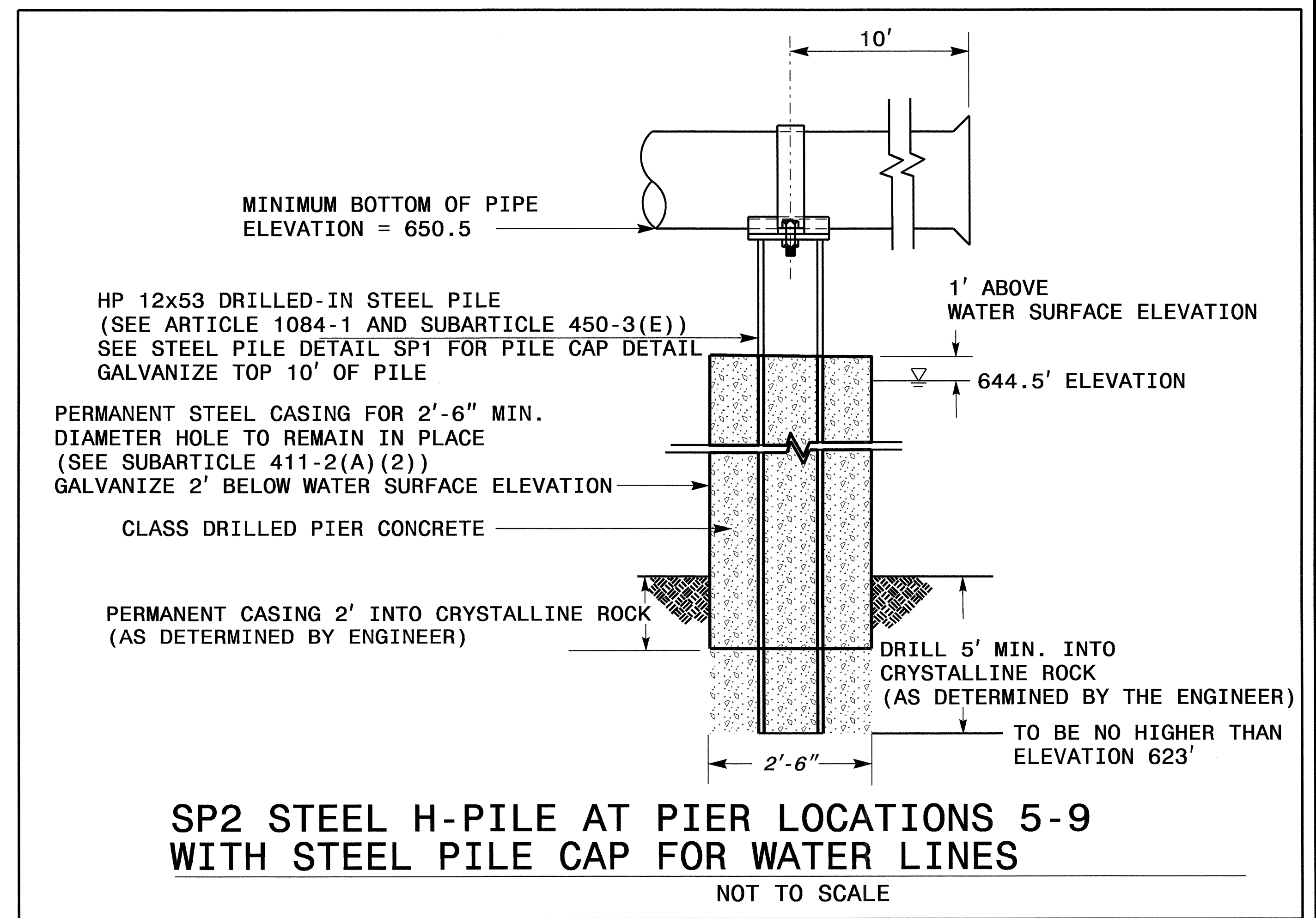
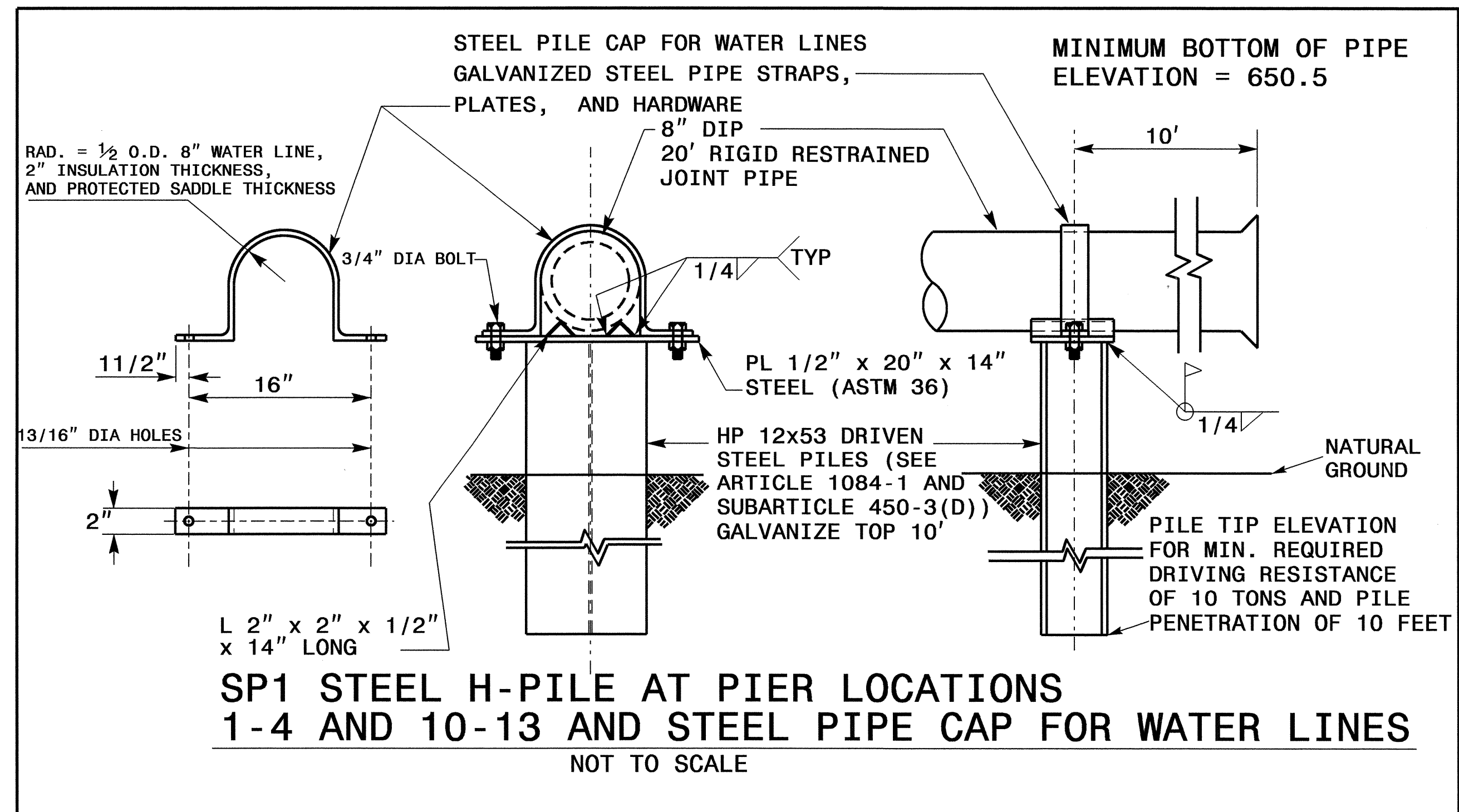
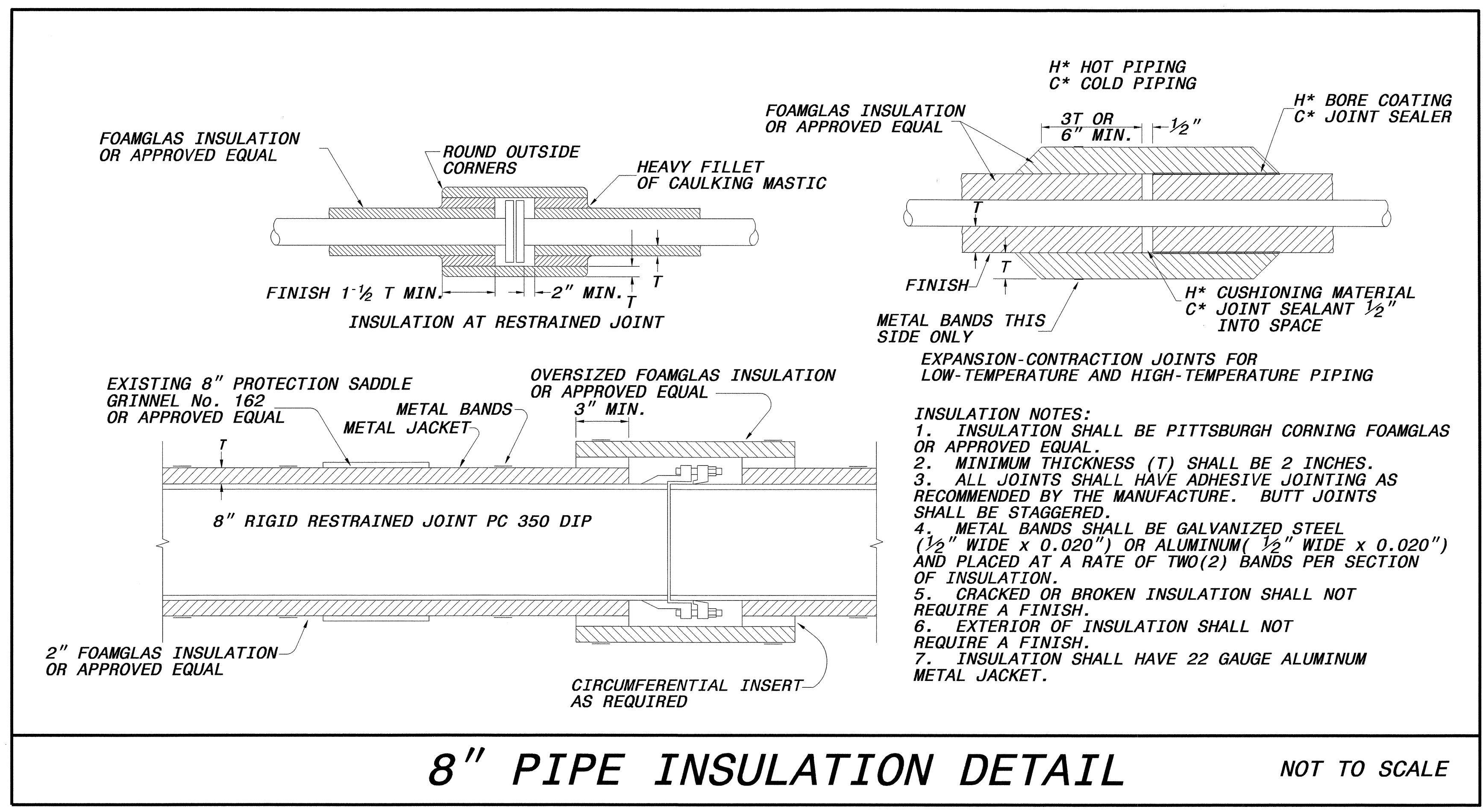


5/14/99
 08-OCT-2012 Hill
 R:\Utilities\B-4809-Ut-4-UC2.dgn

5/14/98

| | |
|--|-----------|
| PROJECT REFERENCE NO. | SHEET NO. |
| B-4809 | UC-3 |
| DESIGNED BY: JAN | |
| DRAWN BY: JAN | |
| CHECKED BY: JSM | |
| APPROVED BY: JSM | |
| REVISED: | |
| NORTH CAROLINA DEPARTMENT OF TRANSPORTATION | |
| UTILITIES ENGINEERING SEC. PHONE: (919) 707-6690 FAX: (919) 250-4151 | |
| UTILITY CONSTRUCTION PLANS ONLY | |

UTILITY CONSTRUCTION



08-OCT-2012 14:10 R:\Utility\B4809\Ut-4\UC2.dgn