

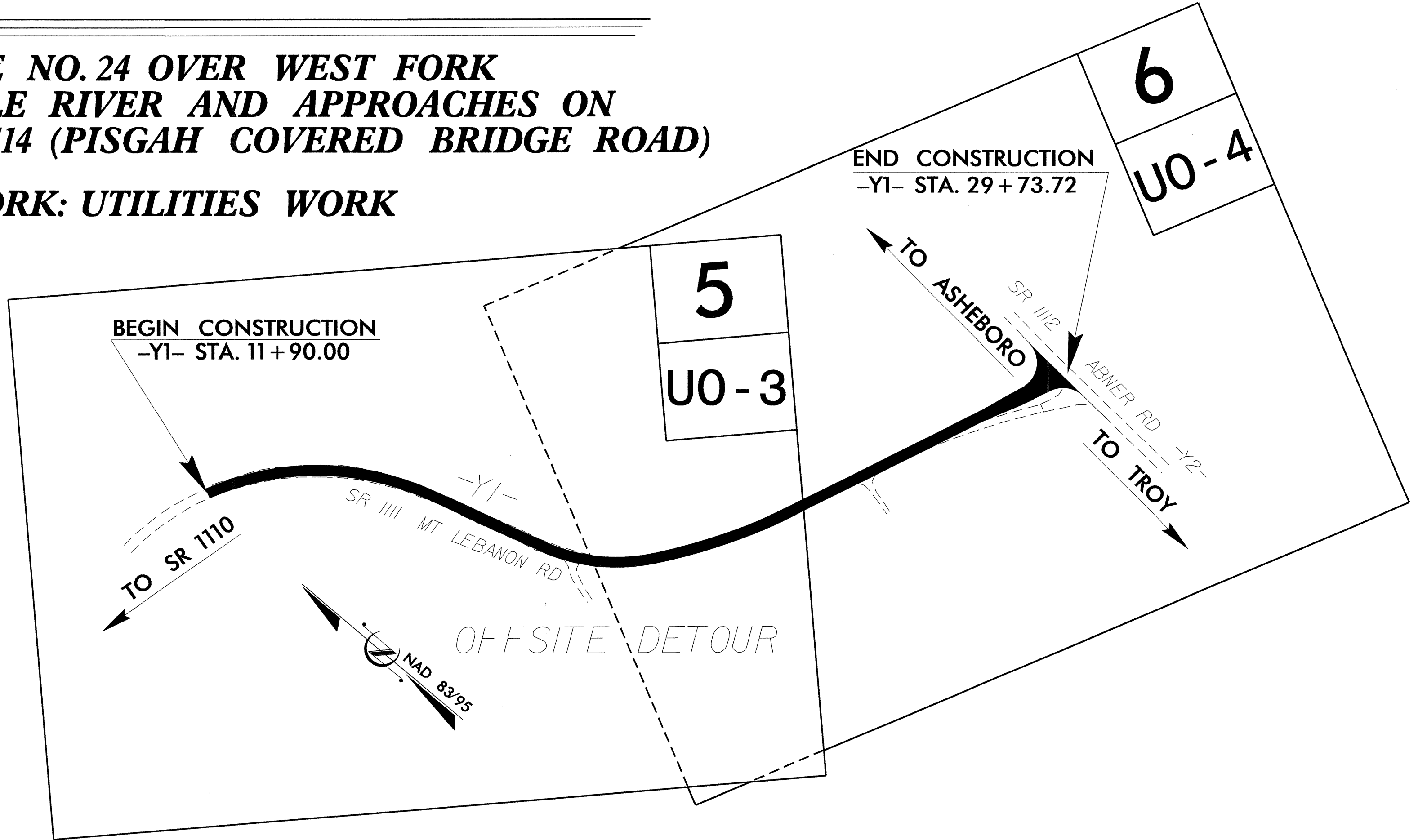
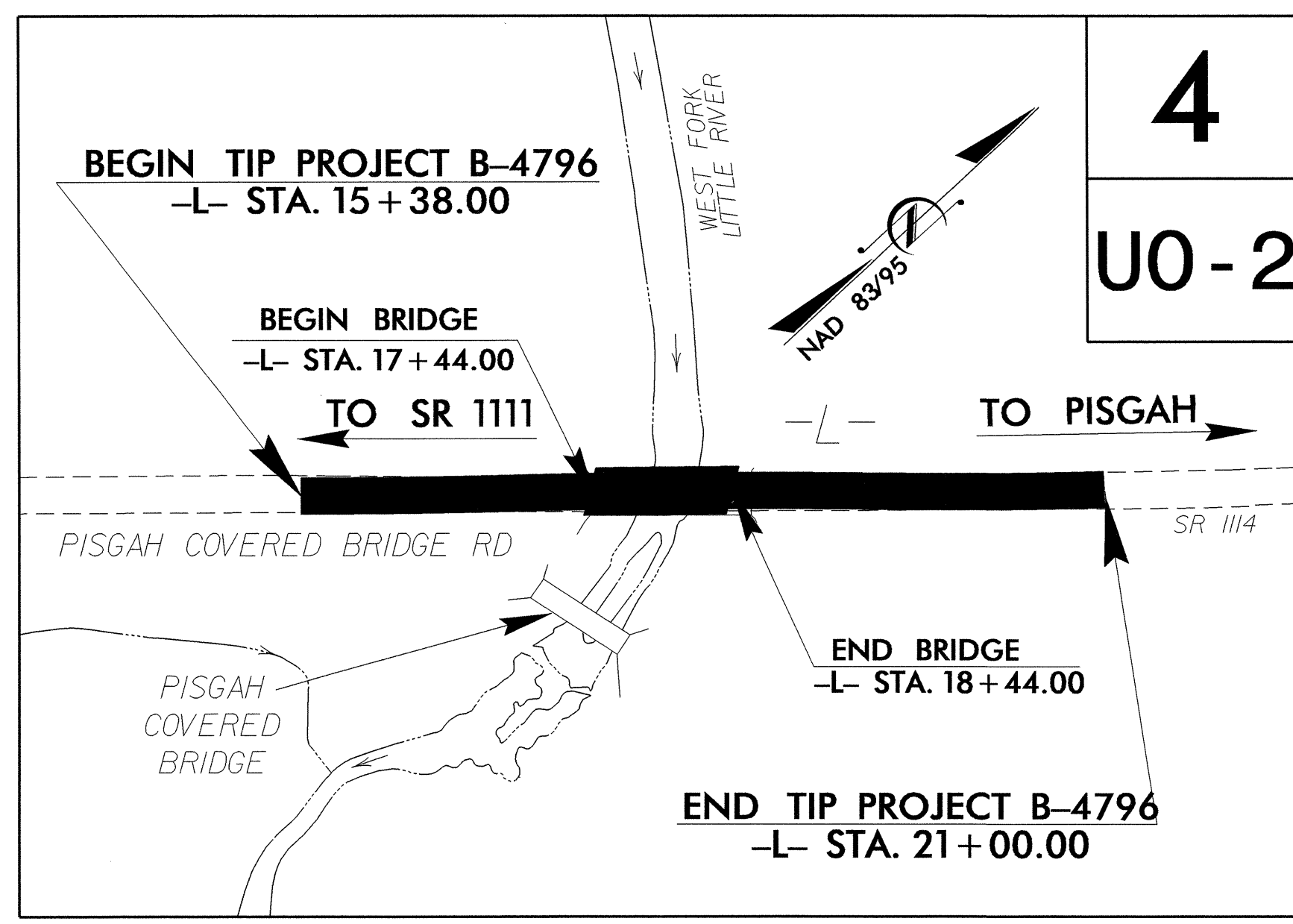
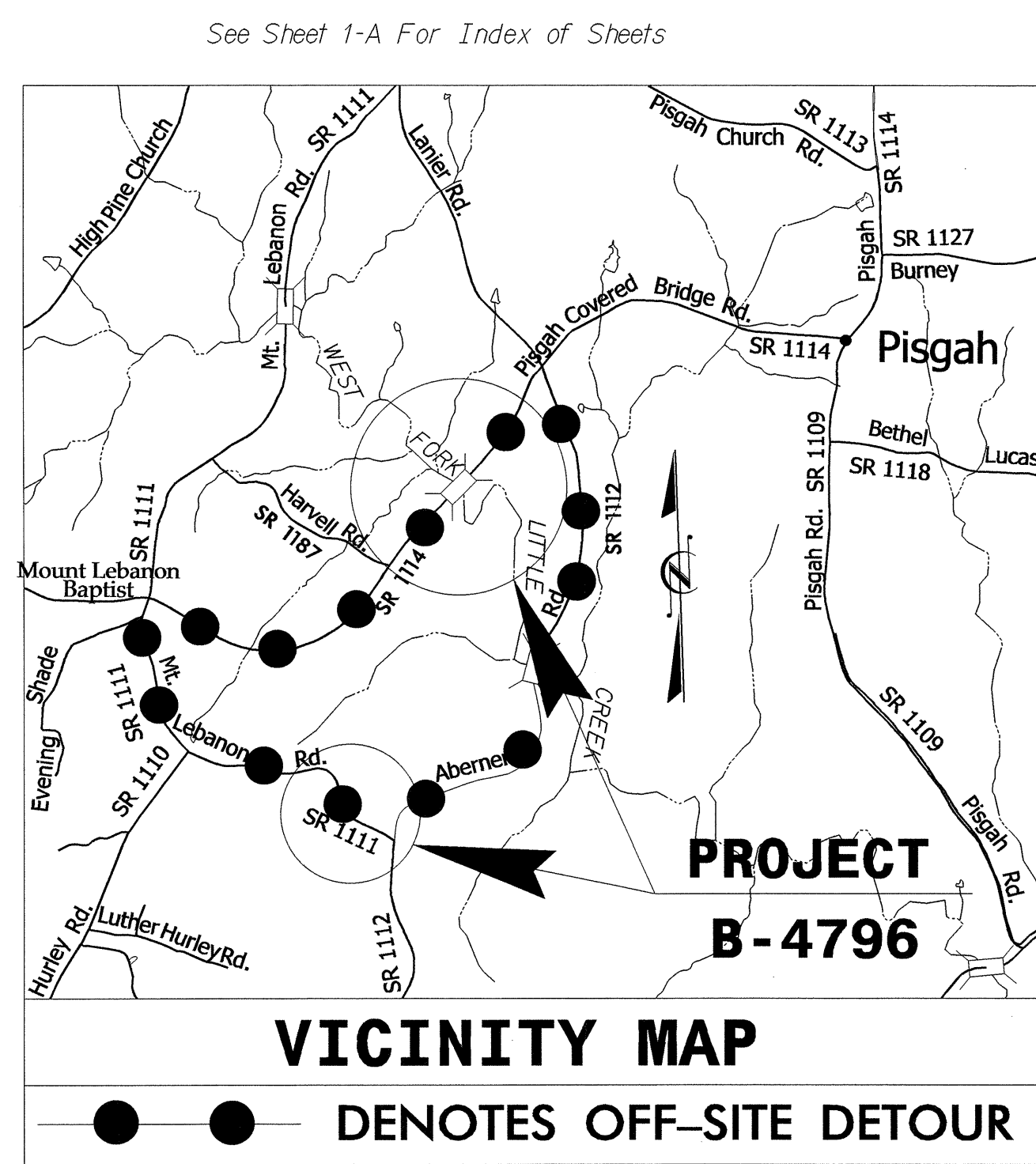
STATE OF NORTH CAROLINA
DIVISION OF HIGHWAYS

**UTILITIES BY OTHERS PLANS
RANDOLPH COUNTY**

**LOCATION: BRIDGE NO. 24 OVER WEST FORK
LITTLE RIVER AND APPROACHES ON
SR 1114 (PISGAH COVERED BRIDGE ROAD)**

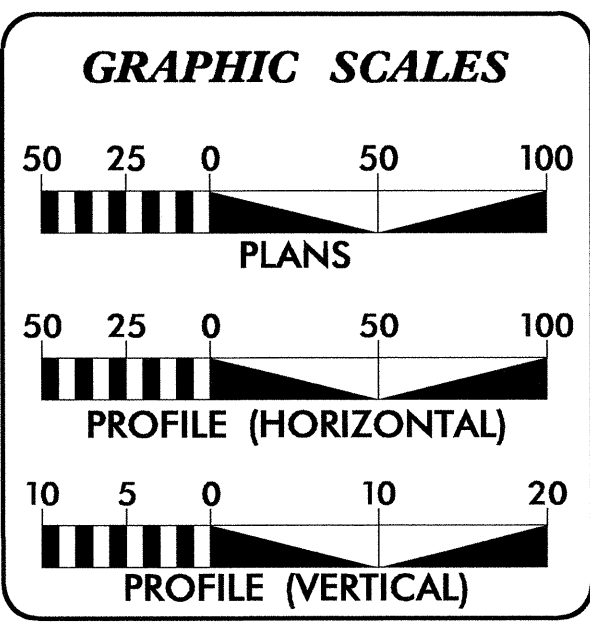
TYPE OF WORK: UTILITIES WORK

TIP PROJECT: B-4796



This project is not within any municipal boundaries.
Clearing on this project shall be performed to the limits established by Method III

Design Exception for vertical alignment is required



INDEX OF SHEETS

SHEET NO.	DESCRIPTION
UO-1	TITLE SHEET
UO-2 THRU UO-4	UTILITY BY OTHERS PLAN SHEETS

UTILITY OWNERS ON PROJECT

- (1) Randolph Electric -- POWER
- (2) Randolph Telephone Membership Corp. TELEPHONE

PREPARED IN THE OFFICE OF:
**DIVISION OF HIGHWAYS
UTILITIES UNIT
UTILITIES ENGINEERING**

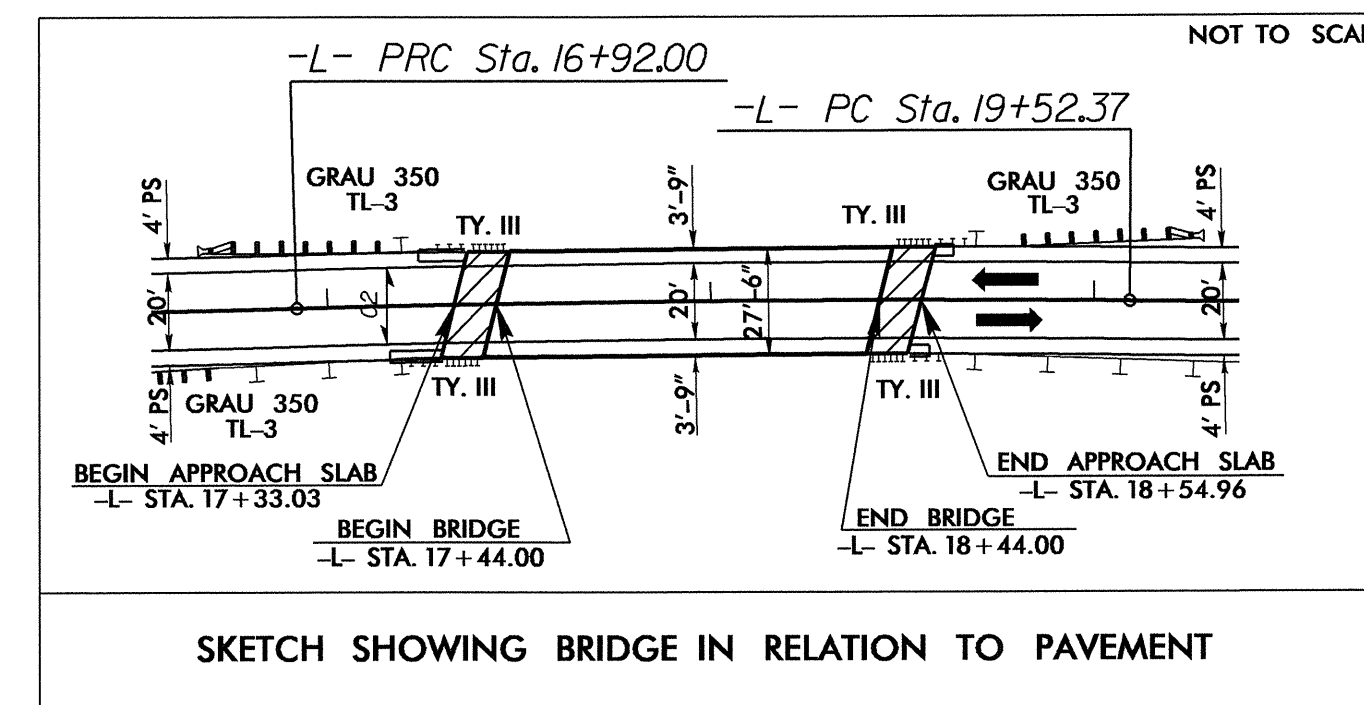
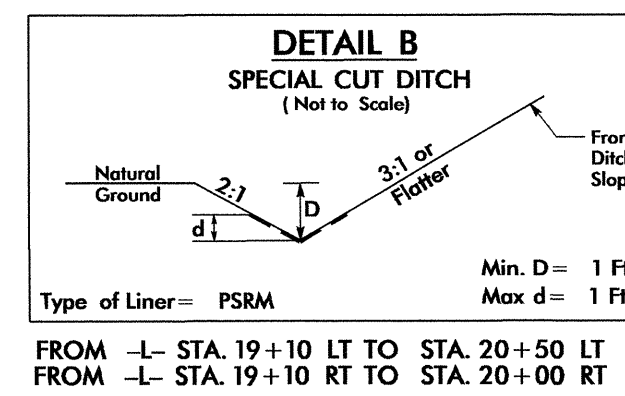
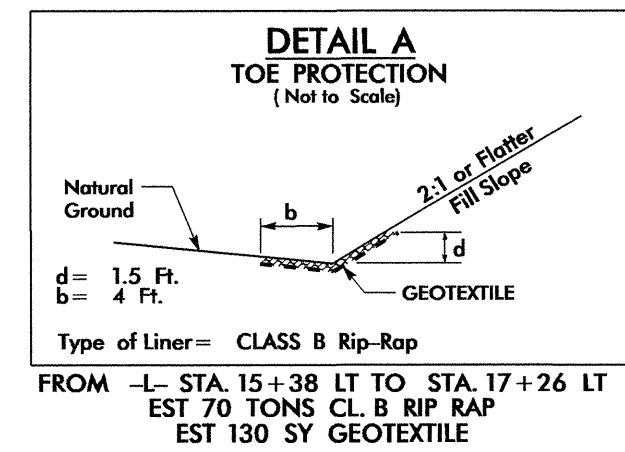
1591 MAIL SERVICES CENTER
RALEIGH, NC 27699-1591
PHONE (919) 767-6690
FAX (919) 250-4151

Roger Worthington, P.E. UTILITIES SECTION ENGINEER
Steve McKee, P.E. UTILITIES SQUAD LEADER PROJECT ENGINEER
Jamshid Hafshejani UTILITIES PROJECT DESIGNER

UTILITIES BY OTHERS

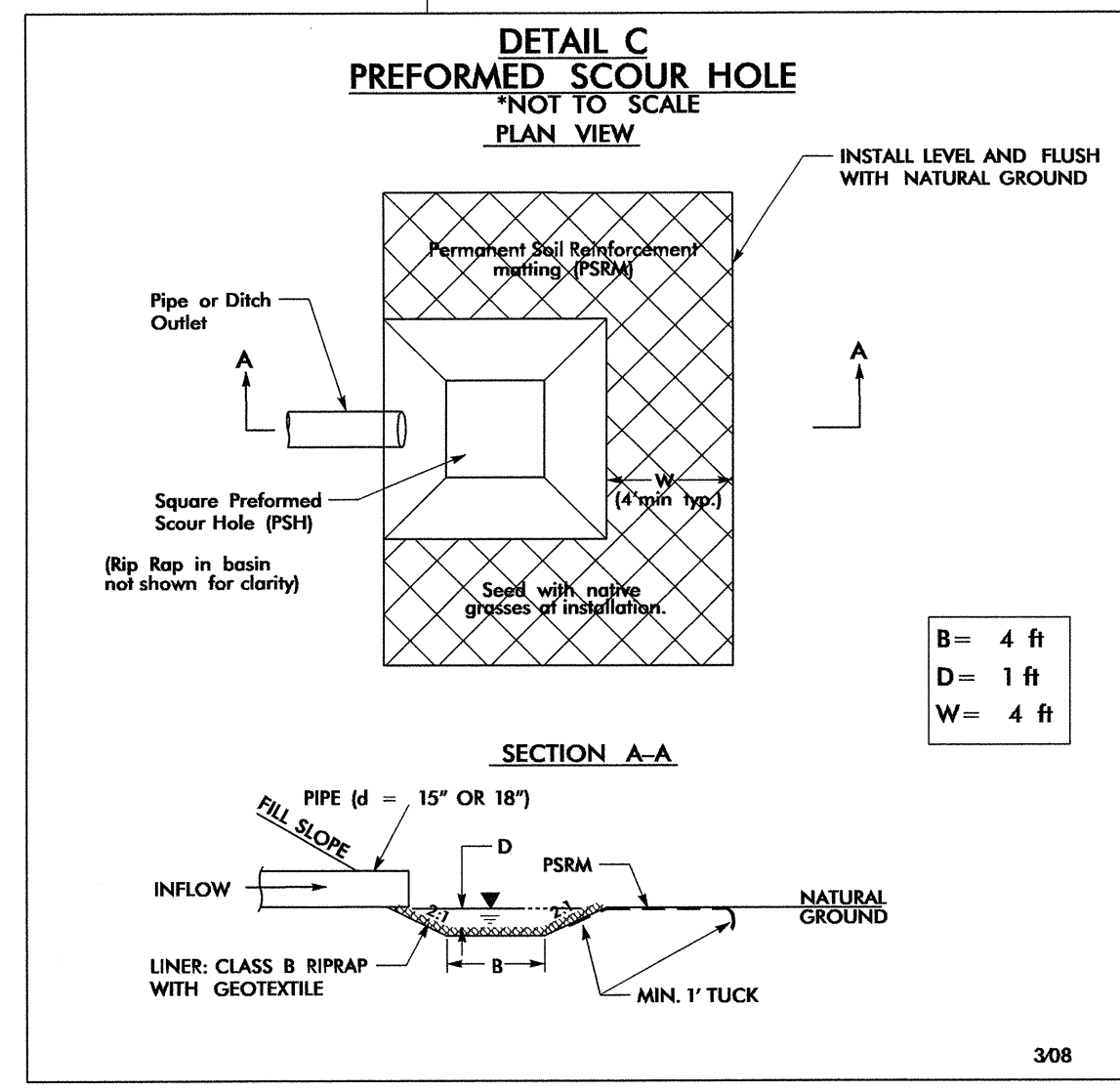
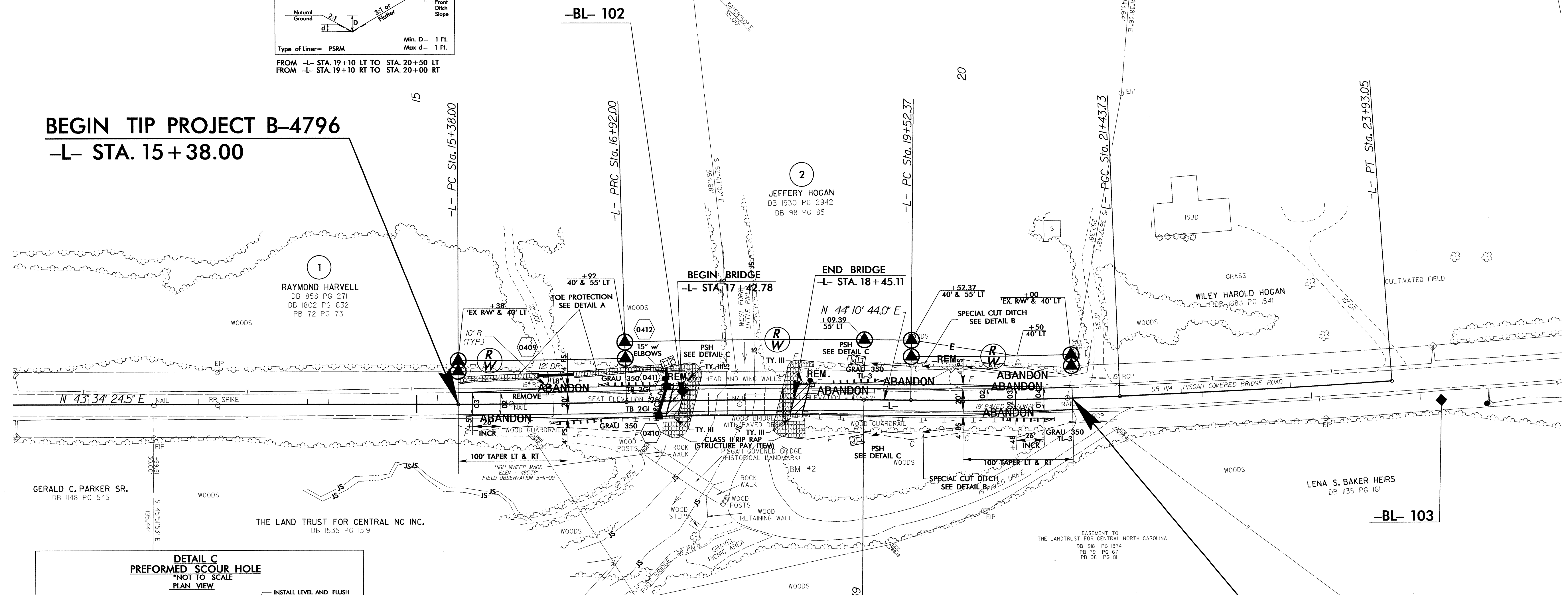
NOTE:
 ALL PROPOSED UTILITY WORK
 SHOWN ON THIS SHEET WILL
 BE DONE BY OTHERS

Note:
 According to Mr. Allen Shaw letter
 dated September 11, 2012 Randolph
 Telephone Membership Corp. will abandon
 all facilities in the project area.



BEGIN TIP PROJECT B-4796
 -L- STA. 15+38.00

END TIP PROJECT B-4796
 -L- STA. 21+00.00



PI Sta 16+15.00 $\Delta = 1' 28'' 14.0''$ (LT) $D = 0' 57'' 17.7''$ $L = 154.00'$ $T = 77.00'$ $R = 6,000.00'$ $SE = NC$	PI Sta 18+00.71 $\Delta = 2' 04'' 33.5''$ (RT) $D = 0' 57'' 17.7''$ $L = 174.00'$ $T = 108.71'$ $R = 6,000.00'$ $SE = NC$	PI Sta 20+48.07 $\Delta = 2' 50'' 52.2''$ (LT) $D = 1' 29'' 17.5''$ $L = 191.36'$ $T = 95.70'$ $R = 3,850.00'$ $SE = NC$	PI Sta 22+68.40 $\Delta = 1' 51'' 18.7''$ (LT) $D = 0' 44'' 38.8''$ $L = 249.32'$ $T = 124.67'$ $R = 7,700.00'$
--	---	--	--

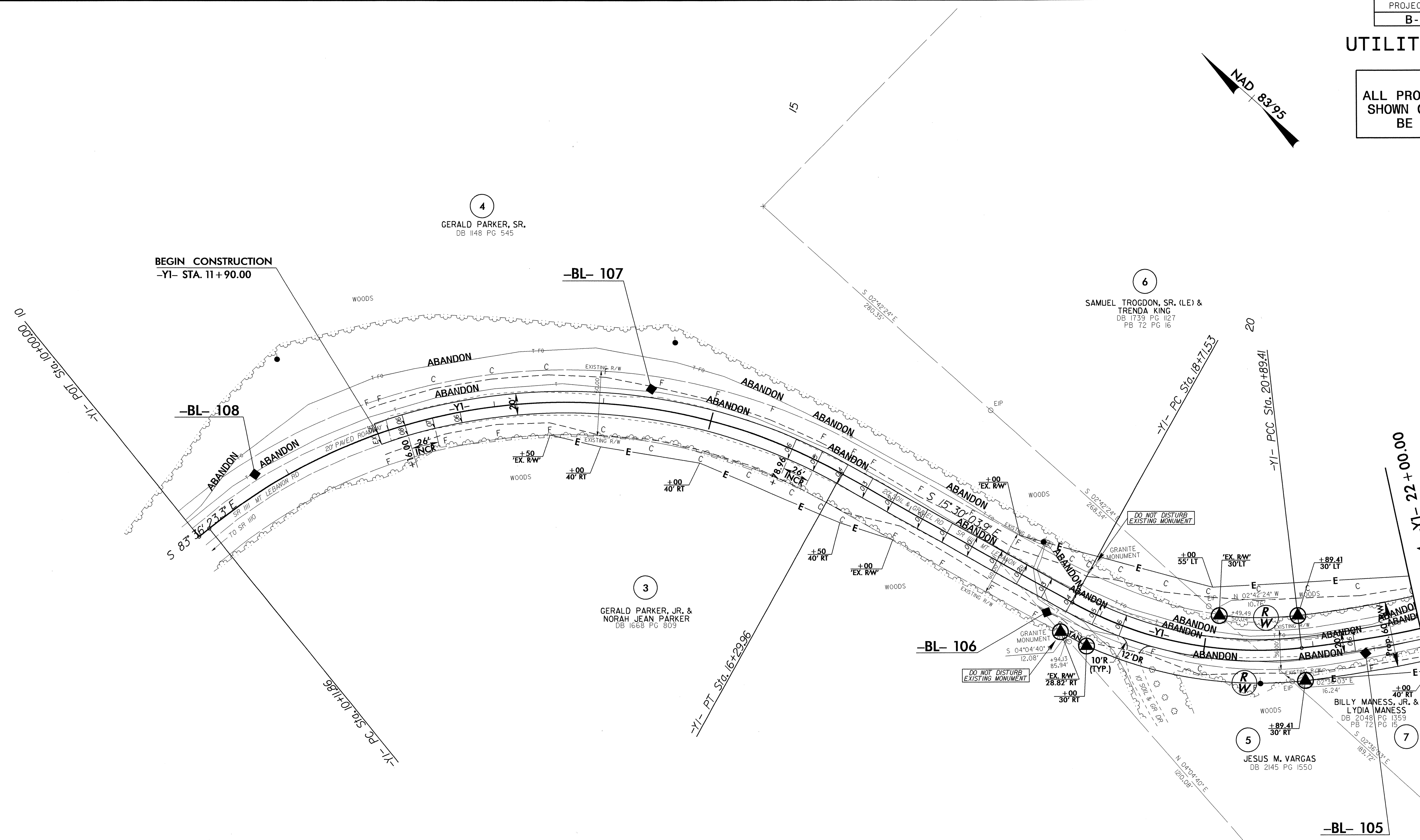
SEE SHEET 7 FOR -L- PROFILE

5/14/09

28-SEP-2012 12:50 p.m. by Others Sht#1_psh.dgn

UTILITIES BY OTHERS

NOTE:
ALL PROPOSED UTILITY WORK
SHOWN ON THIS SHEET WILL
BE DONE BY OTHERS



-YI-

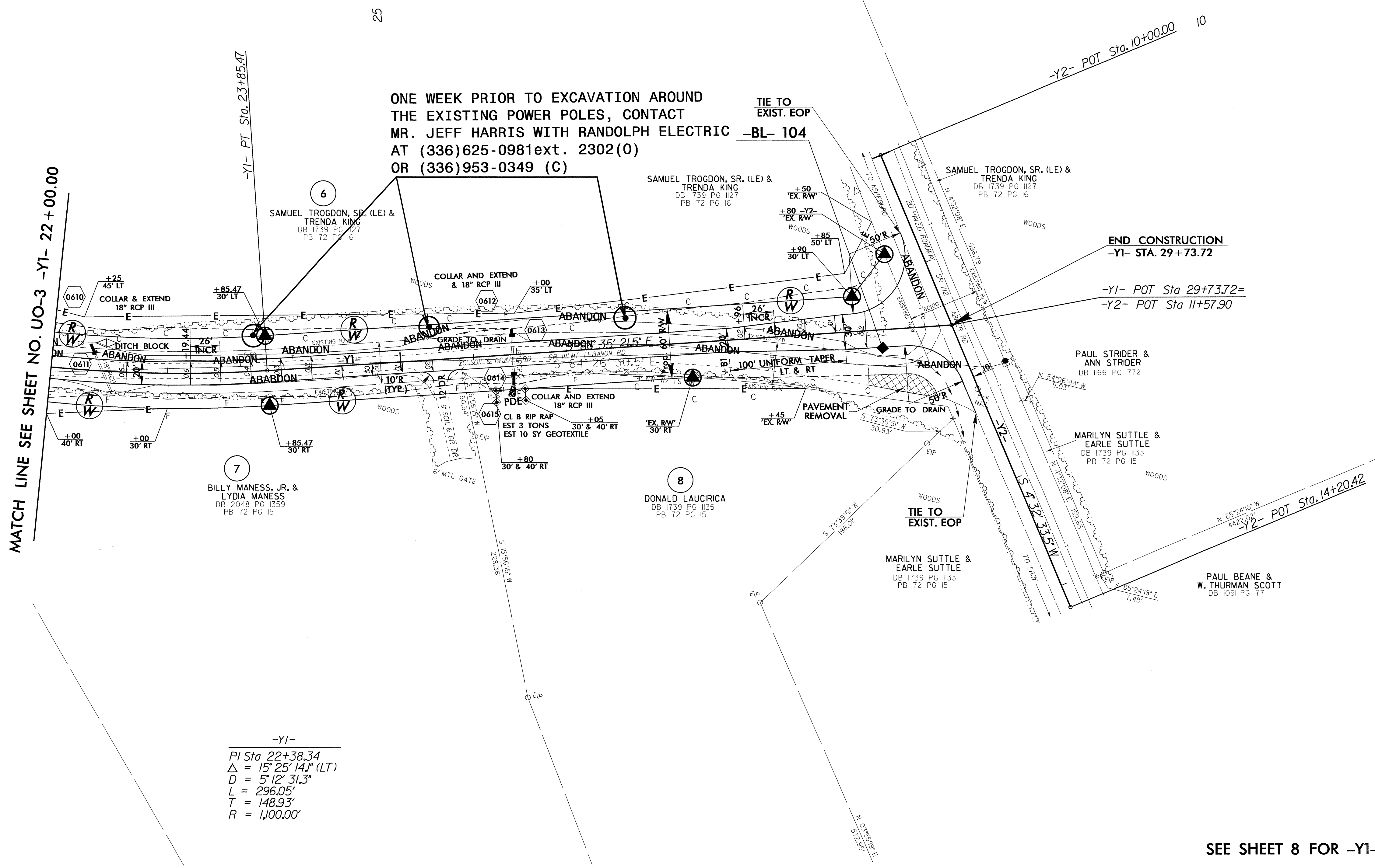
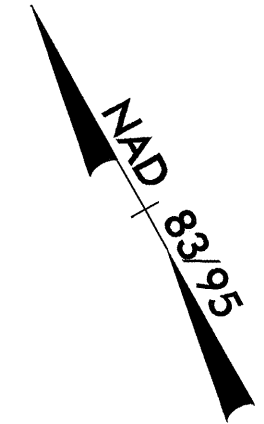
PI Sta 13+63.30	PI Sta 19+84.13	PI Sta 22+38.34
$\Delta = 68^{\circ} 06' 19.3" (RT)$	$\Delta = 35^{\circ} 40' 03.5" (LT)$	$\Delta = 15^{\circ} 25' 14" (LT)$
$D = 11^{\circ} 01' 06.3"$	$D = 16^{\circ} 22' 12.8"$	$D = 5^{\circ} 12' 31.3"$
$L = 618.10'$	$L = 217.88'$	$L = 296.05'$
$T = 351.44'$	$T = 112.60'$	$T = 148.93'$
$R = 520.00'$	$R = 350.00'$	$R = 1,100.00'$
SE= SEE PLANS	SE= SEE PLANS	SE= SEE PLANS

SEE SHEET 8 FOR -YI- PR

5/14/99
28-SEP-2012 12:31
C:\p00\B4796\Utility\rdy_sht\U03\U03.dwg
U:\p00\B4796\Utility\rdy_sht\U03\U03.dwg
U:\p00\B4796\Utility\rdy_sht\U03\U03.dwg

UTILITIES BY OTHERS

NOTE:
ALL PROPOSED UTILITY WORK
SHOWN ON THIS SHEET WILL
BE DONE BY OTHERS



SEE SHEET 8 FOR -Y1- PROFILE

5/14/99
 28-SEP-2002 12:33
 Rdy_Ut_Plan.dwg
 C:\CONSTRUCTION\U04\ut1 by Others Sht*.psh.dgn
 \$\$\$\$SERNAM\$\$\$\$