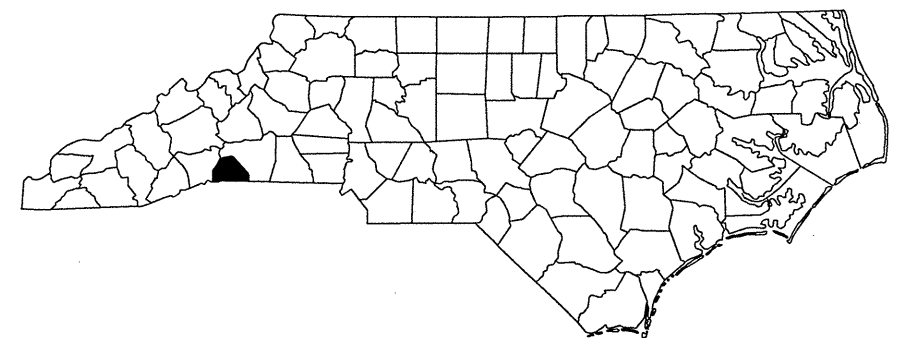
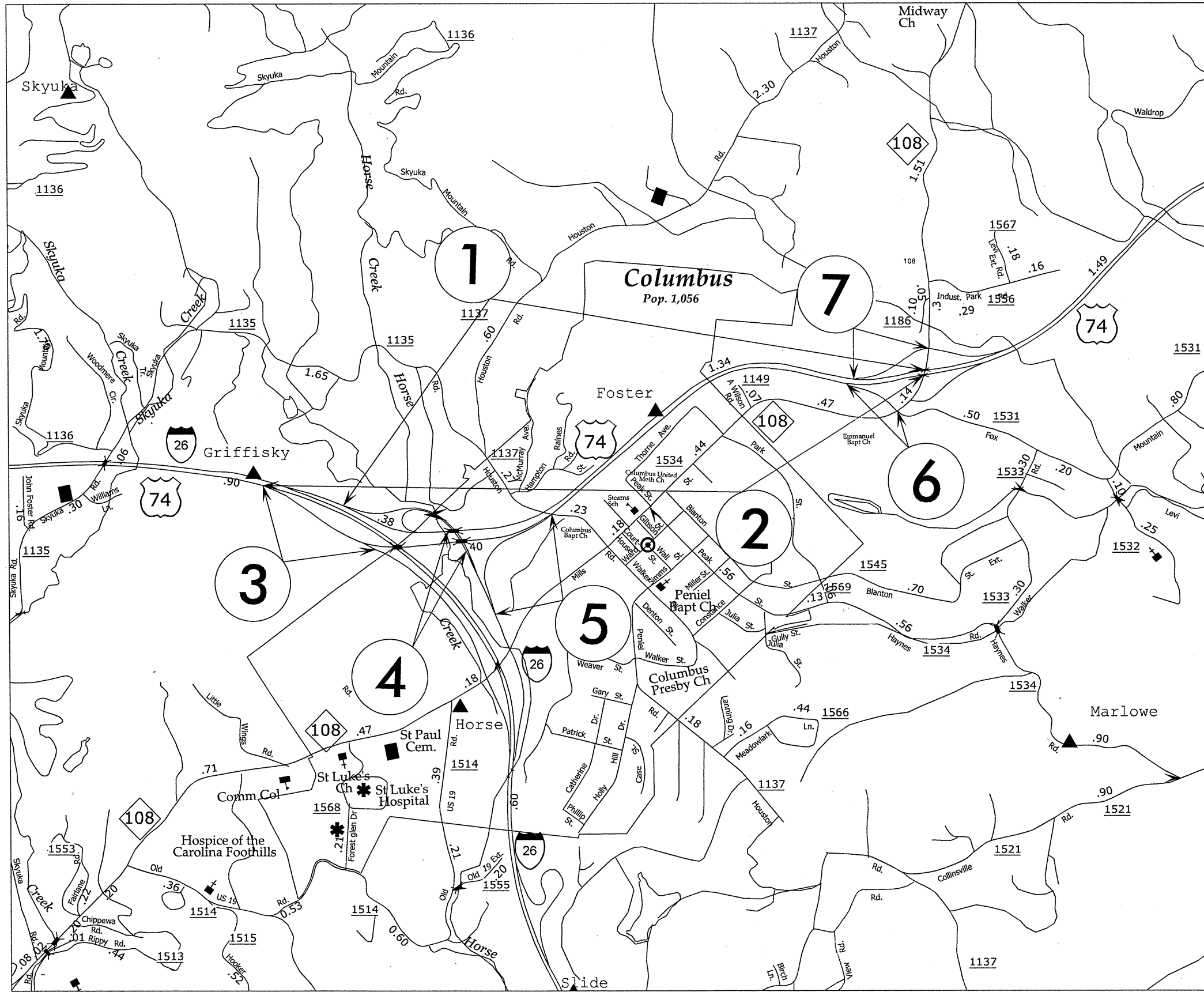


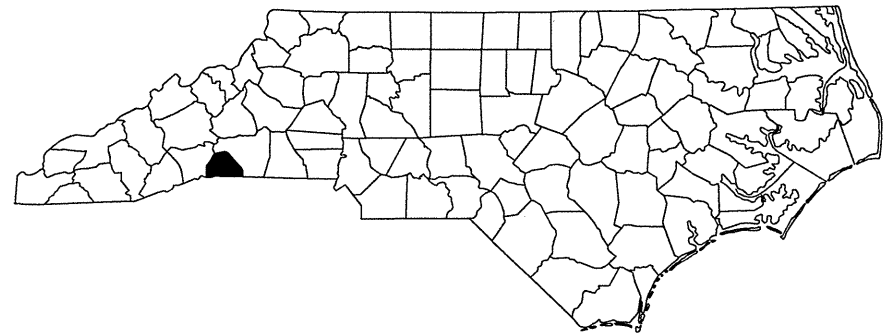
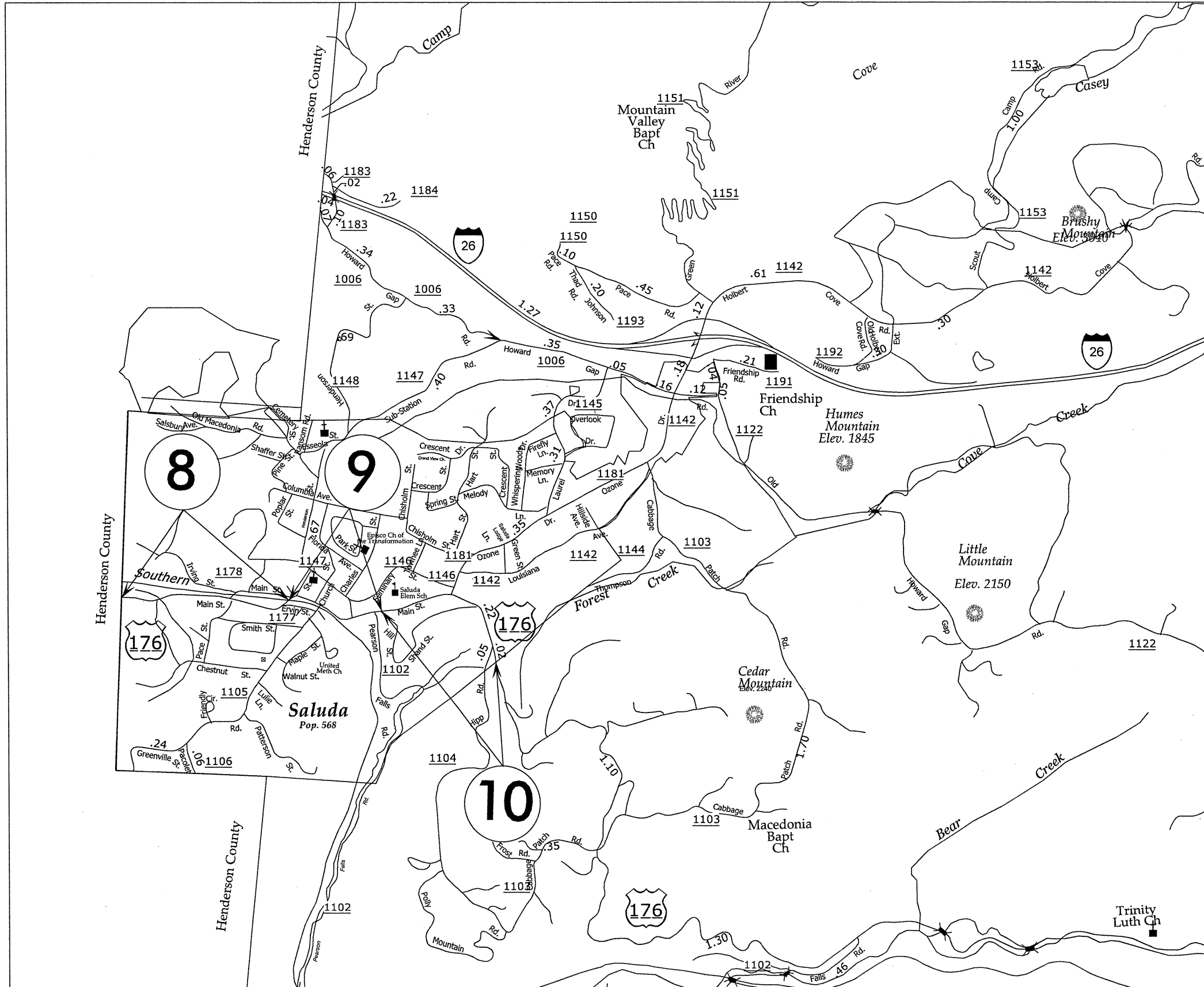
POLK COUNTY

PROJECT REFERENCE NO.		SHEET NO.
14CR.10751.4, etc.		1
STATE PROJECT	F.A. PROJECT NO.	DESCRIPTION
14CR.10751.4		



PROJECT REFERENCE NO.		SHEET NO.
14CR.10751.4, etc.		2
STATE PROJECT	F.A. PROJECT NO.	DESCRIPTION
14CR.10751.4		

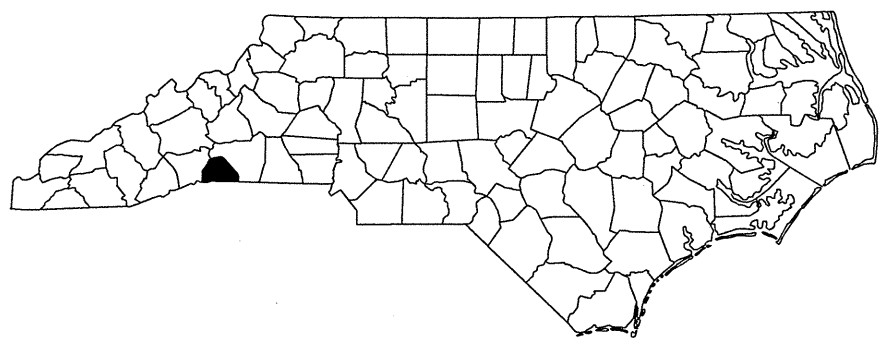
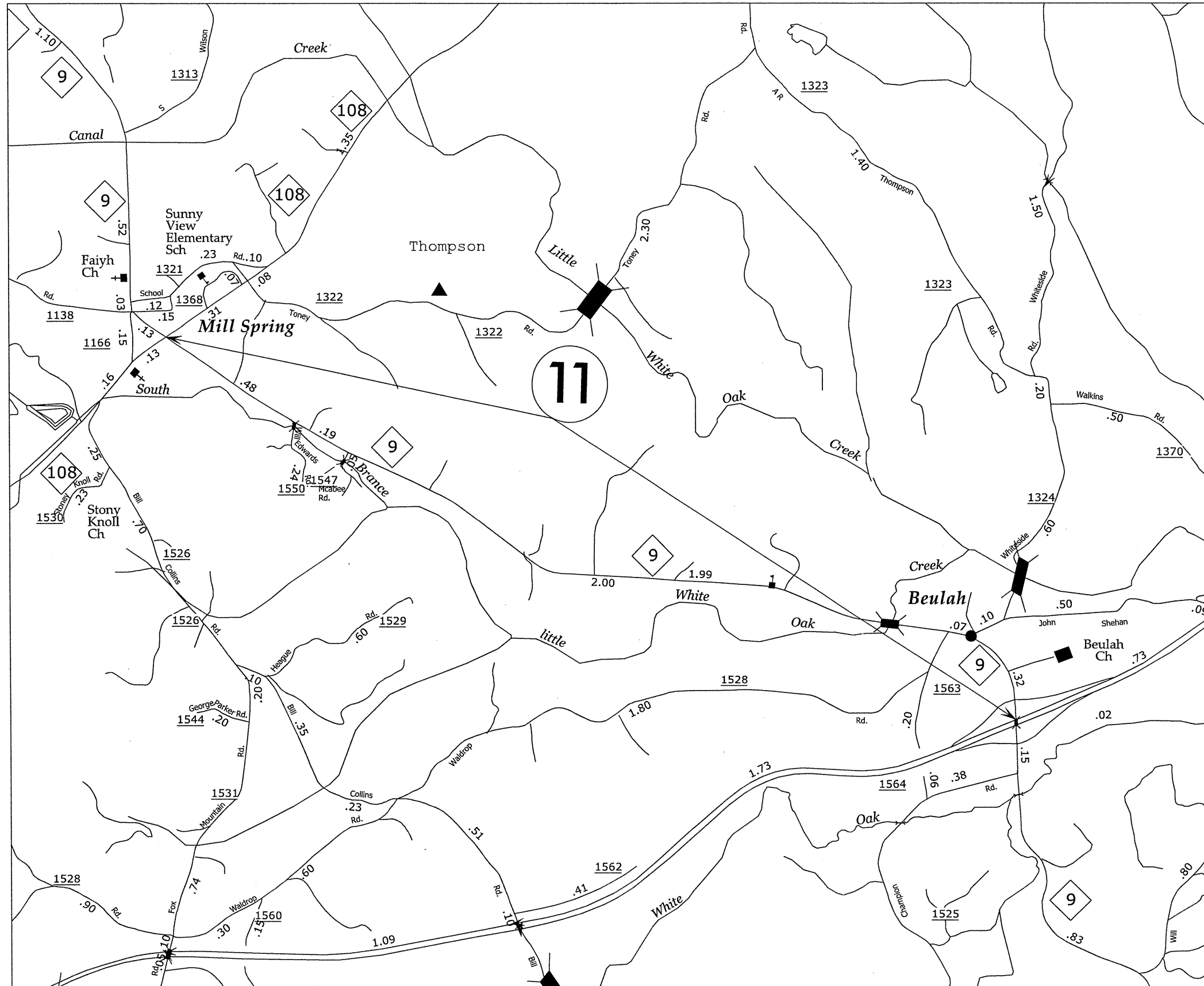
POLK COUNTY



050197

POLK COUNTY

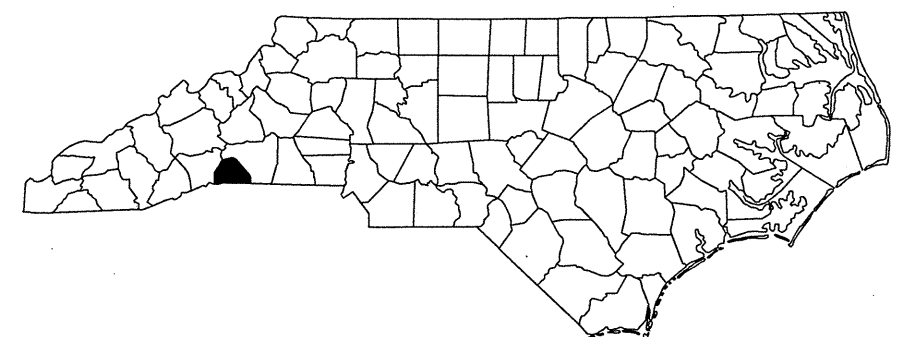
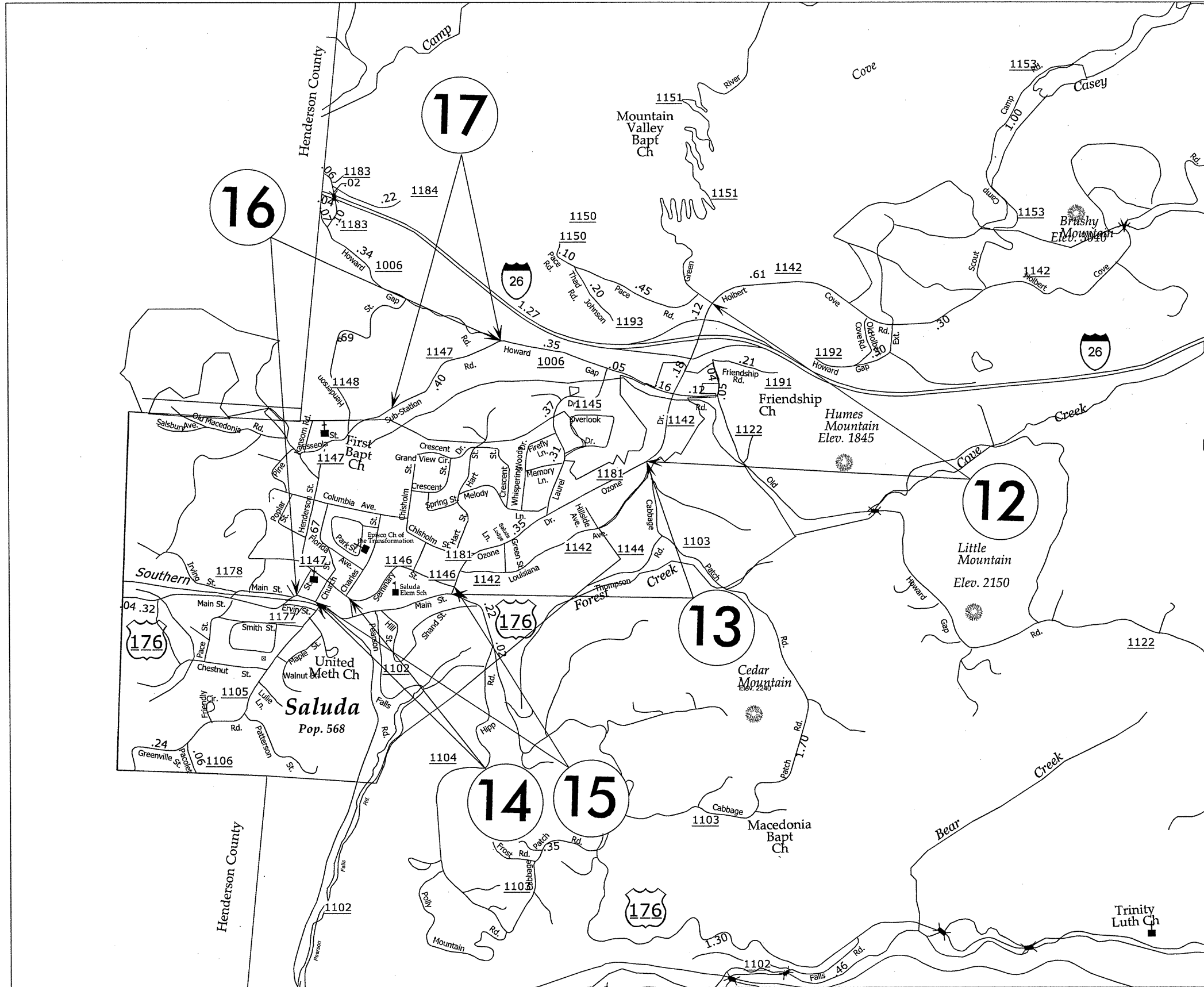
PROJECT REFERENCE NO.		SHEET NO.
14CR.10751.4, etc.		3
STATE PROJECT	F.A. PROJECT NO.	DESCRIPTION
14CR.10751.4		



*****SYTIME*****
 *****DCN*****
 *****USERNAME*****

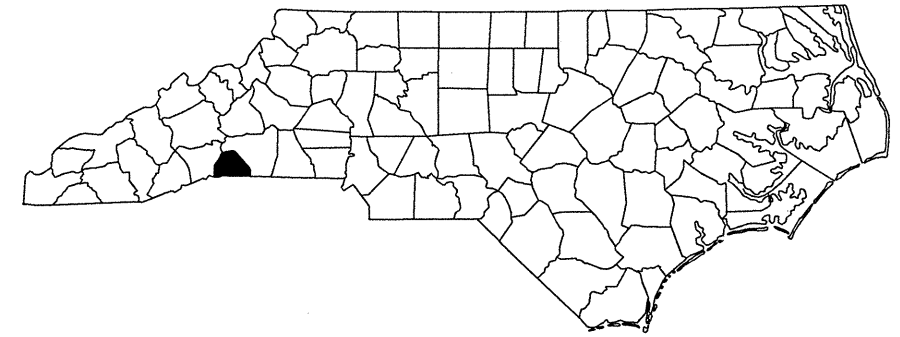
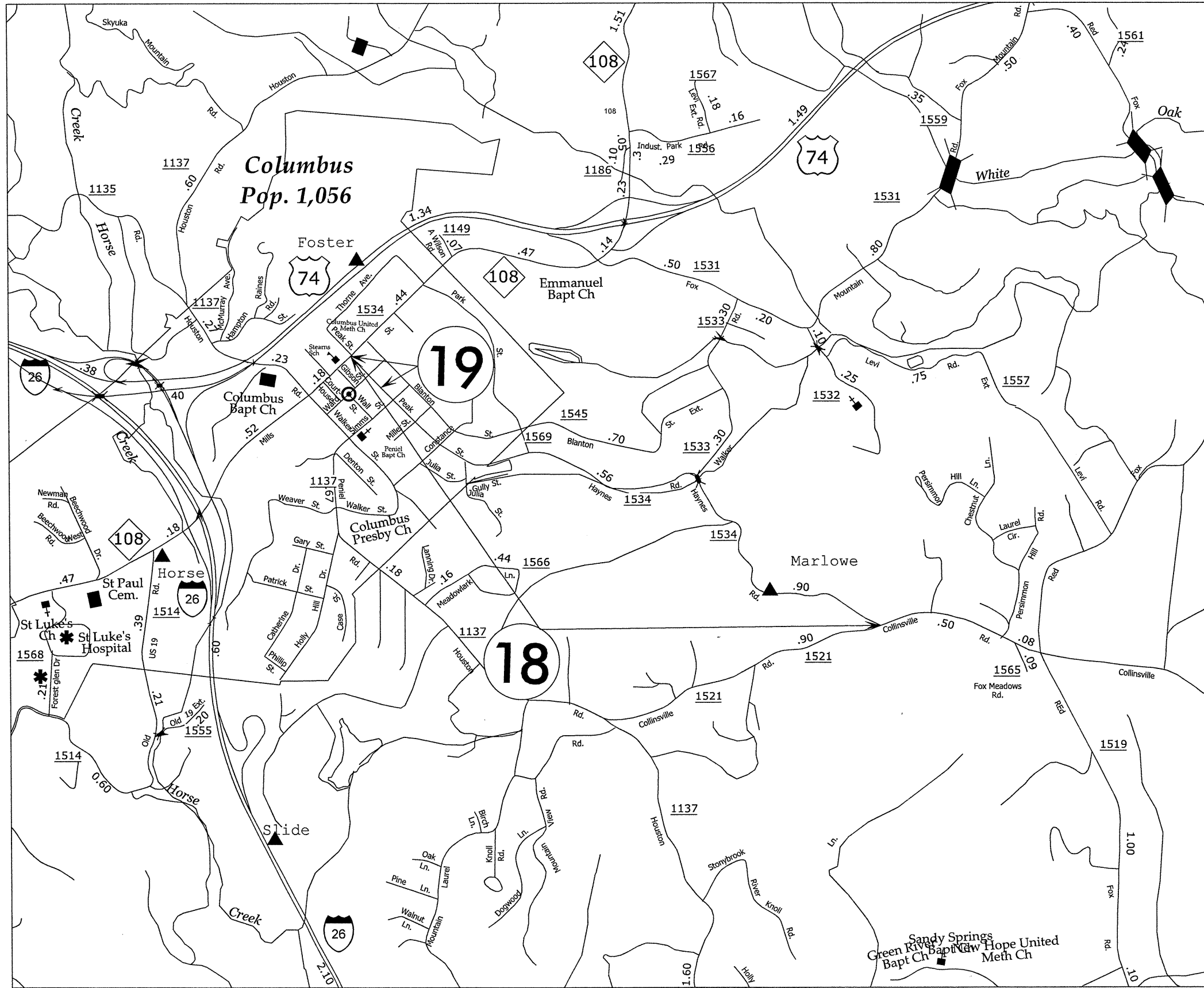
POLK COUNTY

PROJECT REFERENCE NO.		SHEET NO.
14CR.10751.4, etc.		4
STATE PROJECT	F.A. PROJECT NO.	DESCRIPTION
14CR.20751.11		



POLK COUNTY

PROJECT REFERENCE NO.		SHEET NO.
14CR.10751.4, etc.		5
STATE PROJECT	F.A. PROJECT NO.	DESCRIPTION
14CR.20751.11		

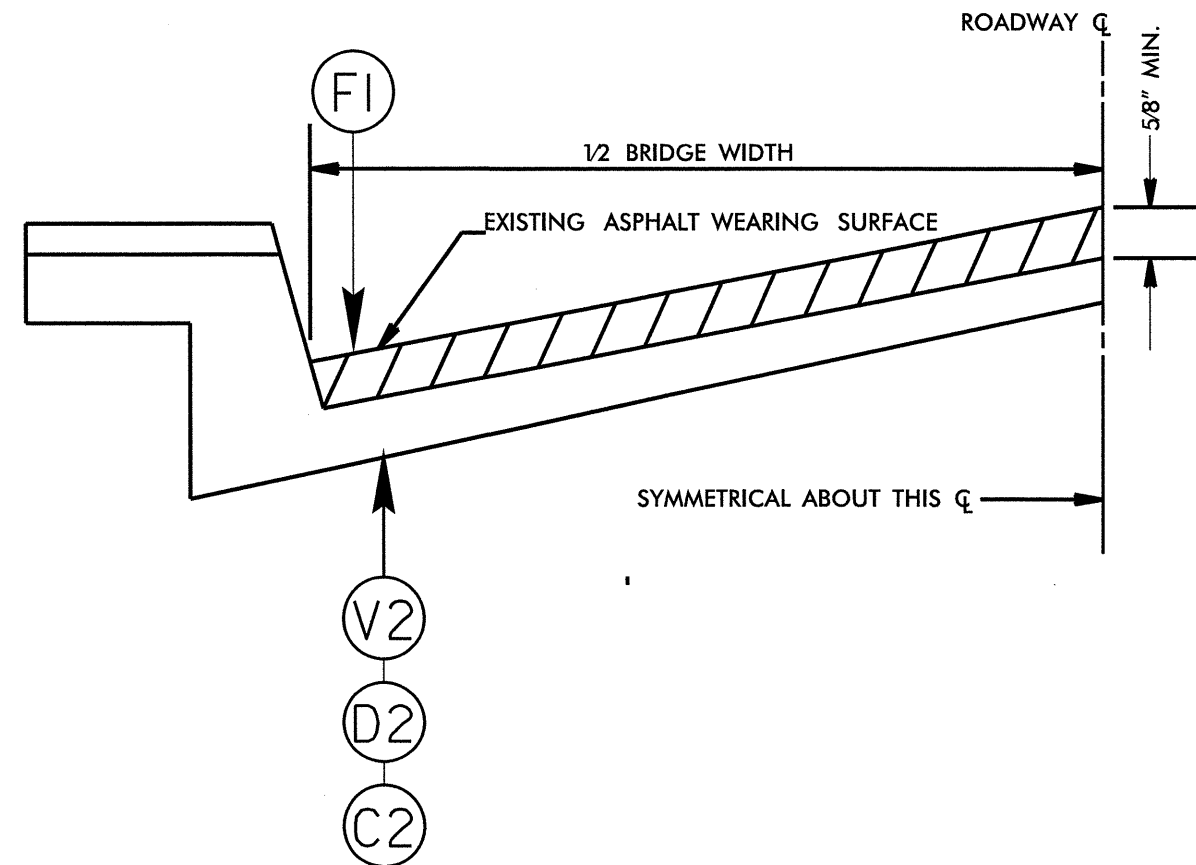


050187

SURFACING SCHEDULE

PROJECT REFERENCE NO.		SHEET NO.
14CR.10751.4, etc.		6
STATE PROJECT	F.A. PROJECT NO.	DESCRIPTION
14CR.10751.4		
14CR.20751.11		

ITEM NO	DESCRIPTION
C1	ASPHALT CONCRETE SURFACE COURSE, TYPE S9.5B, AT AN AVERAGE RATE OF 168 LBS. PER SQ. YD. (1 1/2")
C2	ASPHALT CONCRETE SURFACE COURSE, TYPE S9.5C, AT AN AVERAGE RATE OF 168 LBS. PER SQ. YD. (1 1/2")
D1	ASPHALT CONCRETE INTERMEDIATE COURSE, TYPE I19.0B, AT AN AVERAGE RATE OF 342 LBS. PER SQ. YD. (3")
D2	ASPHALT CONCRETE INTERMEDIATE COURSE, TYPE I19.0C, AT AN AVERAGE RATE OF 342 LBS. PER SQ. YD. (3")
F1	OPEN GRADED ASPHALT FRICTION COURSE, TYPE FC-1 MOD, AT AN AVERAGE RATE OF 70 LBS. PER SQ. YD.
R	MILLED RUMBLE STRIPS
V1	MILLING ASPHALT PAVEMENT 1 1/2" IN DEPTH IN DISTRESSED AREAS AS DIRECTED BY PROJECT ENGINEER. SEE PROJECT SPECIAL PROVISIONS.
V2	MILLING ASPHALT PAVEMENT 0" to 4" IN DEPTH AS DIRECTED BY PROJECT ENGINEER.
T	SHOULDER RECONSTRUCTION SEE PROJECT SPECIAL PROVISIONS
U	EXISTING PAVEMENT

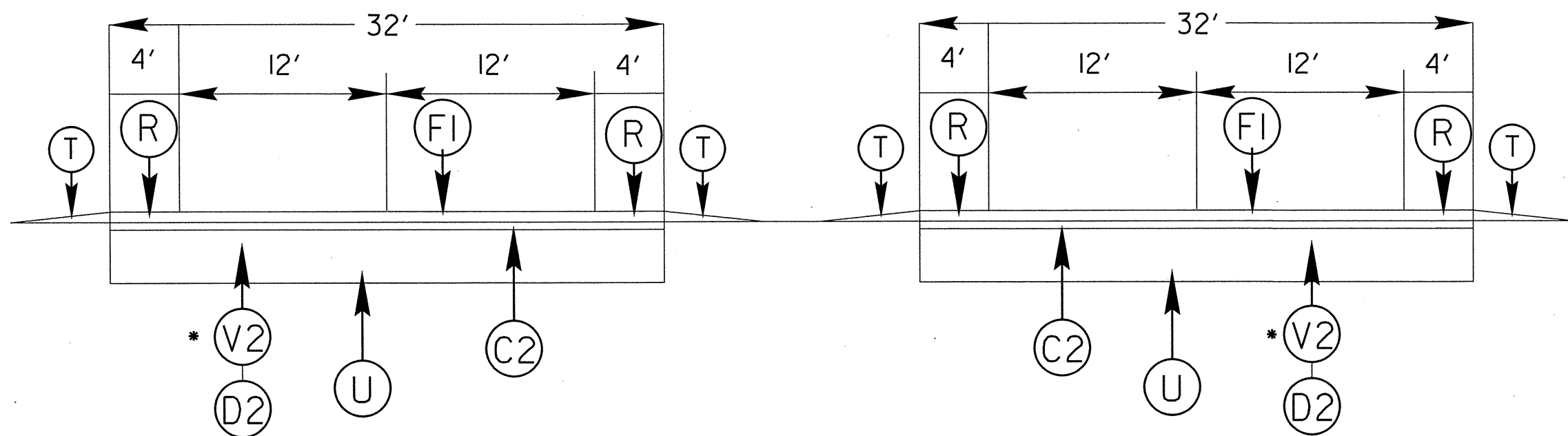


050197

PROJECT REFERENCE NO.		SHEET NO.
14CR.10751.4, etc.		7
STATE PROJECT	F.A. PROJECT NO.	DESCRIPTION
14CR.10751.4		

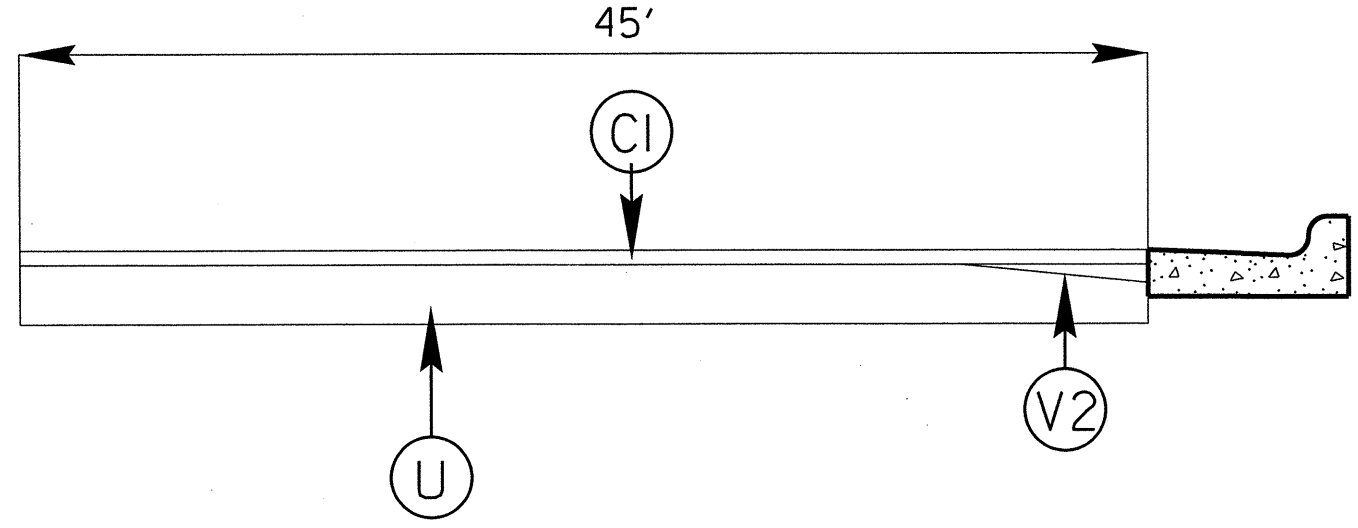
TYPICAL 1

US 74



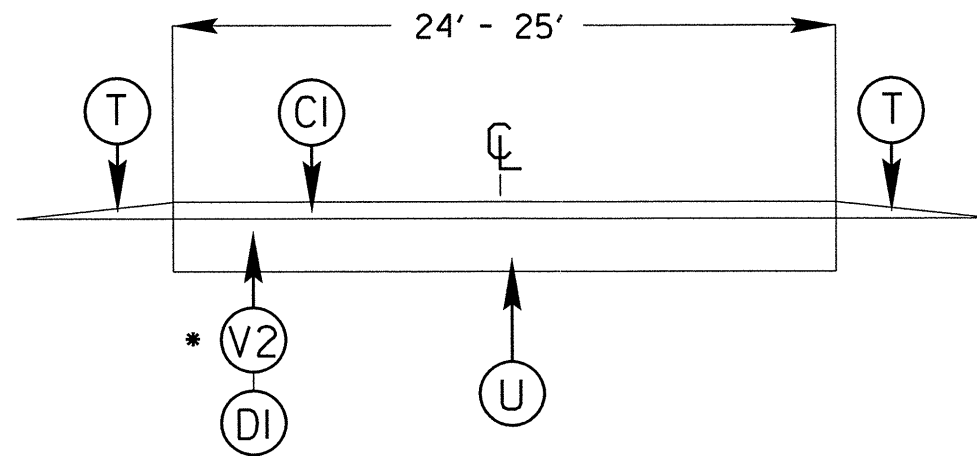
TYPICAL 2

US 176

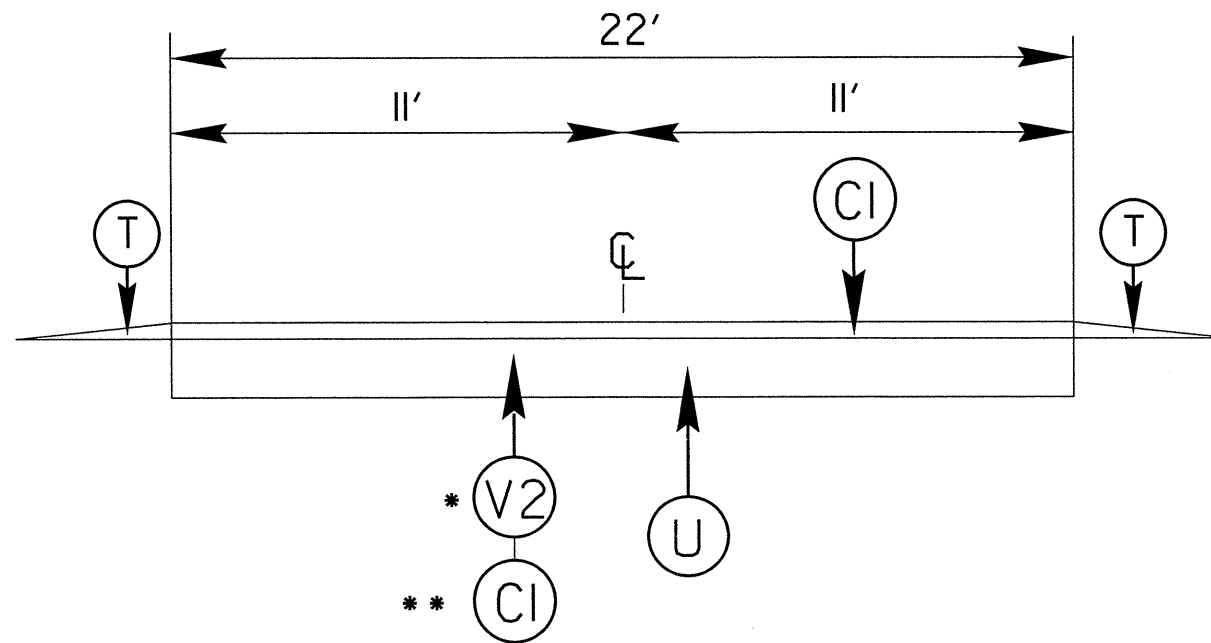


PROJECT REFERENCE NO.		SHEET NO.
14CR.10751.4, etc.		8
STATE PROJECT	F.A. PROJECT NO.	DESCRIPTION
14CR.10751.4		

TYPICAL 3 US 176



TYPICAL 4 NC 9

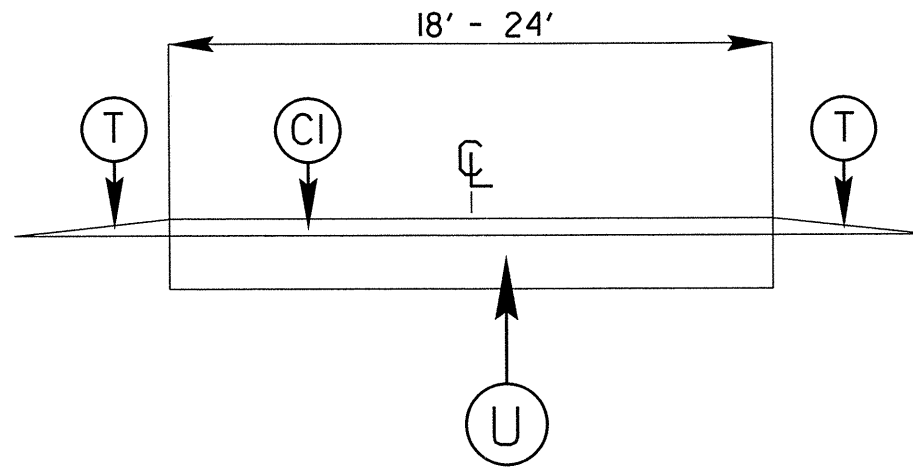


- * NOTE: MILLING IN DISTRESSED AREAS AS DIRECTED BY PROJECT ENGINEER.
- ** NOTE: C1 WILL BE PLACED IN SINGLE LIFT AT DEPTH (MIN 1.5", MAX 2") AS DIRECTED BY PROJECT ENGINEER DEPENDING ON MILLING DEPTH.
- NOTE: SF9.5A LEVELING REQUIRED AS DIRECTED BY PROJECT ENGINEER.

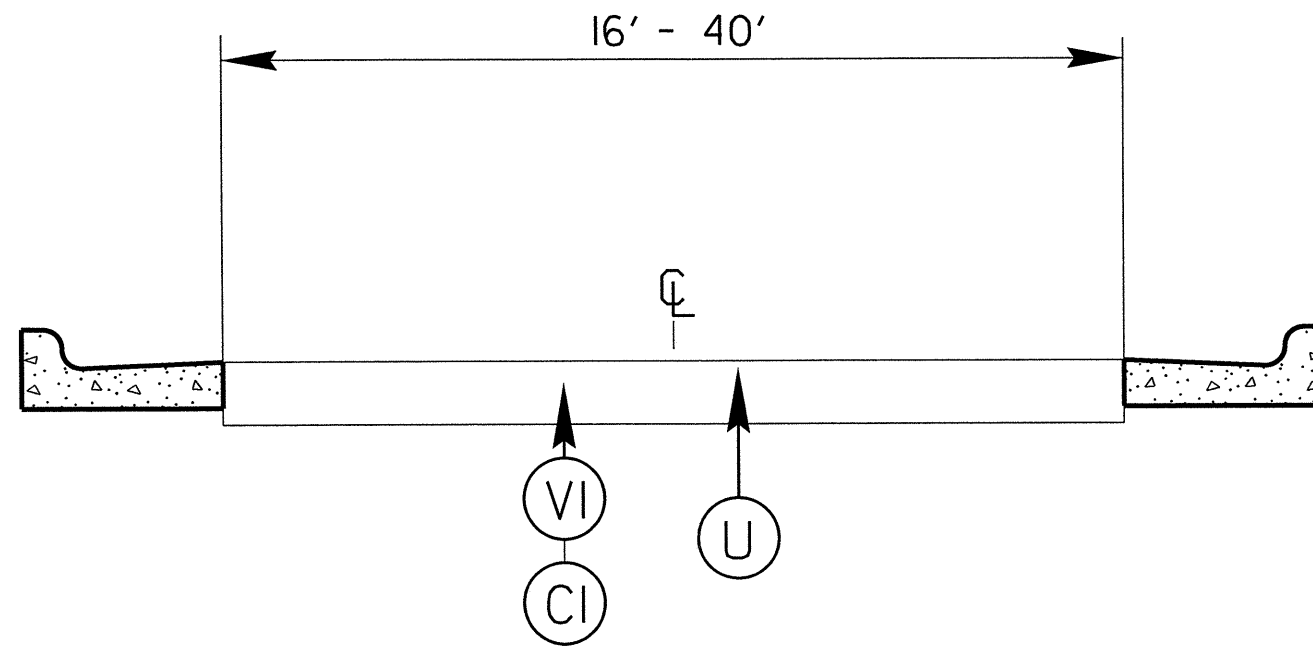
050197

PROJECT REFERENCE NO.		SHEET NO.
14CR.10751.4, etc.		9
STATE PROJECT	F.A. PROJECT NO.	DESCRIPTION
14CR.10751.4		
14CR.20751.11		

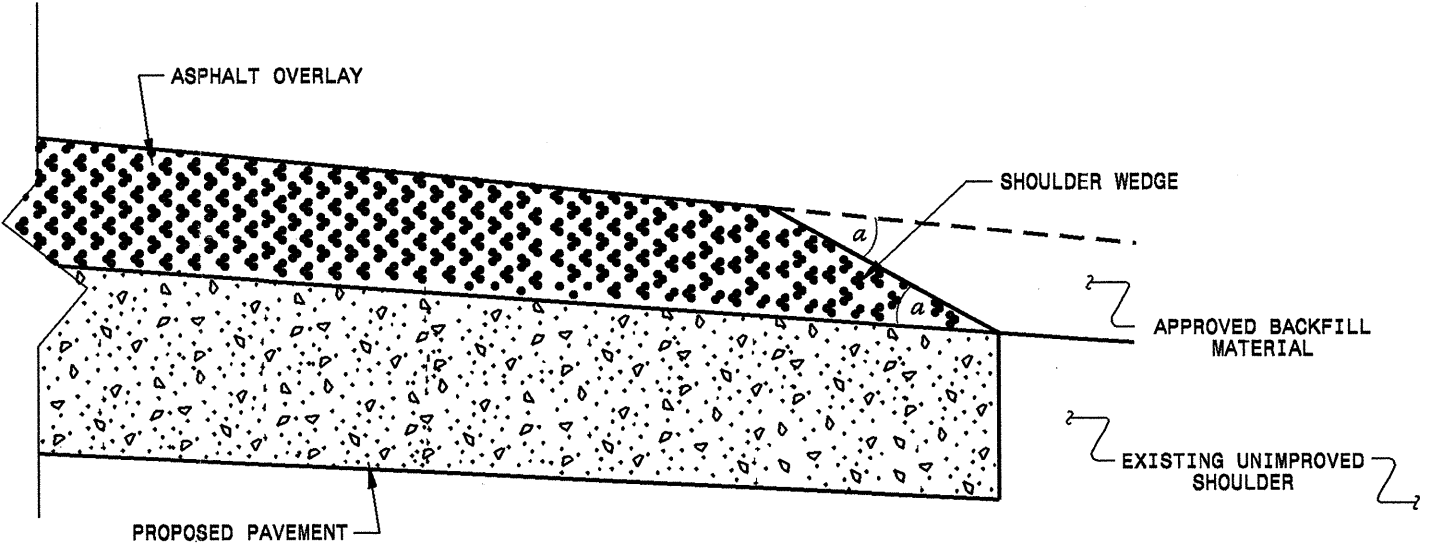
TYPICAL 5 RAMPS AND SR's



TYPICAL 6

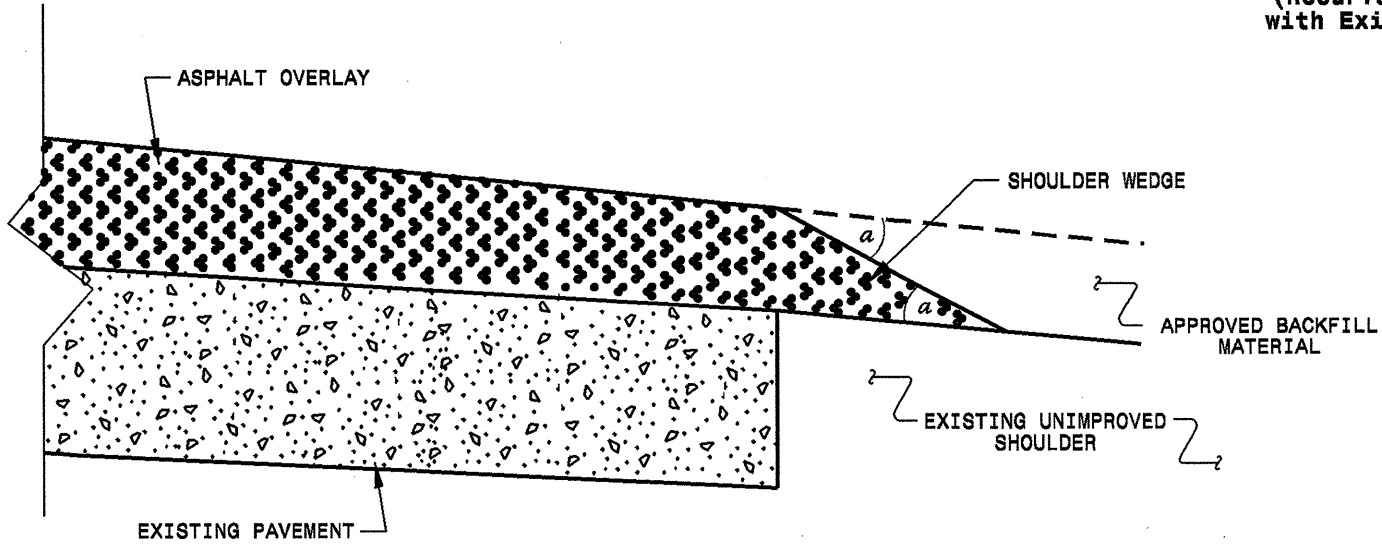


PROJECT REFERENCE NO.	SHEET NO.
14CR.10751.4, ETC	10



SHOULDER WEDGE DETAIL

(Resurfacing Projects w/ Widening or with Existing Paved Shoulder > 2 ft.)



SHOULDER WEDGE DETAIL

(Resurfacing Projects w/ NO Widening)

- NOTES:
- 1) DETAIL DOES NOT APPLY TO OGAFB AND ULTRA-THIN.
 - 2) BACKFILL SHOULDER WITH APPROVED MATERIAL.
 - 3) THE SHOULDER WEDGE DEVICE MAY BE DISENGAGED AT PAVED DRIVEWAYS AND SIDE STREETS.

a - SHOULDER WEDGE ANGLE = 30°

CONTRACT STANDARDS AND DEVELOPMENT UNIT	
Office 919-707-6950 FAX 919-250-4119	
SHOULDER WEDGE DETAILS	
ORIGINAL BY: T.SPELL	DATE: 7-18-11
MODIFIED BY:	DATE: 10/18/12
CHECKED BY:	DATE:
FILE SPEC.: s:\user\details\stand\shoulderwedgedetail.dgn	

24 OCT 2012 10:12 C:\Users\pjt\Documents\msc\Updated Shoulder Wedge Detail.dgn

PROJECT NO.	SHEET NO.	TOTAL NO.
14CR.10751.4, 14CR.20751.11	11	

SUMMARY OF QUANTITIES

PROJECT NO	COUNTY	MAP NO	ROUTE	DESCRIPTION	TYP NO	FINAL SURFACE TESTING REQUIRED	WARM MIX ASPHALT REQUIRED	LENGTH MI	WIDTH FT	REMOVAL OF EXISTING ASPHALT PAVEMENT SY	INCIDENTAL STONE BASE TONS	SHOULDER RECONSTRUCTION SMI	1 1/2" MILLING SY	0" TO 4" MILLING SY	INCIDENTAL MILLING SY	INTERMEDIATE COURSE, I19.0B TONS	INTERMEDIATE COURSE, I19.0C TONS	SURFACE COURSE, S9.5B TONS	SURFACE COURSE, S9.5C TONS	SURFACE COURSE (LEVELING), SF9.5A TONS	ASPHALT BINDER FOR PLANT MIX TONS	POLYMER MODIFIED ASPHALT BINDER FOR PLANT MIX TONS	OPEN-GRADED ASPHALT FRICTION COURSE, TYPE FC-1 MODIFIED TON	MILLED RUMBLE STRIPS LF	ADJ. OF MAN-HOLES EA	ADJ. OF METER OR VALVE BOX EA	PORTABLE LIGHTING LS	
14CR.10751.4	Polk	1	US 74 WEST	FROM NC-108 TO I-26	1	NO	NO	2.2	32			4.40		2,697	20		714		3,761		256	115	1,877	23,232				
		2	US 74 EAST	FROM I-26 TO NC-108	1	NO	NO	1.99	32			3.98		2,697	20		714		3,402		235	104	1,698	21,014				
		3	US-74 EXIT RAMP	FROM I-26 EAST TO US-74 EAST	5	NO	NO	0.15	24			0.30			10			191			11							
		4	US-74 EXIT RAMP	FROM US-74 WEST TO I-26 WEST	5	NO	NO	0.41	24			0.82			10			522			31							
		5	US-74 ACCESS RAMP	FROM I-26 WEST TO US-74 EAST	5	NO	NO	0.34	24			0.68			10			433			26							
		6	US-74 EXIT RAMP	FROM US-74 EAST TO NC-108	5	NO	NO	0.3	24	160		0.60			10			382			23							
		7	US-74 ACCESS RAMP	FROM NC-108 TO US-74 WEST	5	NO	NO	0.5	24			0.80			10			636			38							
		8	US-176	FROM HENDERSON COUNTY LINE TO BRIDGE BRIDGE #5	3	NO	NO	0.52	24		15	1.04		1,020	12	70		678			44							
		9	US-176	FROM BRIDGE #5 TO PVT. CHG. AT HILL STREET	2	NO	NO	0.21	45					1,760	14			500			30				6	4	*	
		10	US-176	FROM HILL STREET TO SOUTH SALUDA CITY LIMITS	3	NO	NO	0.58	25		15	1.16		1,980	12	511		843			75							
		11	NC-9	FROM US-74 TO NC-108	4	NO	NO	3	22			6.00		250	12			3,598		1,650	326							
TOTAL FOR PROJ NO. 14CR.10751.4								10.2		160	30	19.78		10,404	140	581	1,428	7,783	7,163	1,650	1,095	219	3,575	44,246	6	4	1	
14CR.20751.11	Polk	12	SR-1142	FROM SR-1151 TO INTERSECTION OF SR-1103 AND SR-1142 LOUISIANA AVE.	5	NO	NO	0.55	24		16	0.61			10			706		326	64							
		13	SR-1181	FROM SR-1142 TO US-176	5	NO	NO	0.75	24			1.13			10			963			58							
		14	SR-1146	FROM US-176 TO SR-1181	5	NO	NO	0.16	24			0.32			10			205			12							
		15	SR-1146 CURB SECTION	FROM US-176 TO SR-1181	6	NO	NO	0.39	16				3,661					335			20							
		16	SR-1147	US 176 TO SR-1006	5	NO	NO	0.9	18			1.80			10			868			52							
		17	SR-1147 CURB SECTION	FROM END CURB SECTION TO SR-1006	6	NO	NO	0.35	20				4,107		10			375			22							
		18	SR-1534	FROM NC-108 TO SR-1521	5	NO	NO	2.11	19			4.11			10			2,168			130							
		19	SR-1534 CURB SECTION	FROM NC-108 TO END OF CURB SECTION	6	NO	NO	0.1	40				2,347					214			13							
TOTAL FOR PROJ NO. 14CR.20751.11								5.31		16	7.97	10,115		60			5,834	326	371									
GRAND TOTAL								15.51		160	46	27.75	10,115	10,404	200	581	1,428	13,617	7,163	1,976	1,466	219	3,575	44,246	6	4	1	

PROJECT NO.	SHEET NO.	TOTAL NO.
14CR.10751.4, 14CR.20751.11	12	

THERMOPLASTIC AND PAINT QUANTITIES

PROJECT NO	COUNTY	MAP NO	ROUTE	DESCRIPTION	LENGTH	WIDTH	4415000000-N	4420000000-N	4430000000-N	4480000000-N	4516000000-N	4685000000-E		4686000000-E		4695000000-E	4697000000-E	4710000000-E	4721000000-E	4725000000-E	4810000000-E		4820000000-E	4835000000-E	4840000000-N	4845000000-N	4905000000-N					
							FLASHING ARROW BOARD EA	PORTABLE CHANGEABLE MESSAGE BOARD EA	DRUMS EA	TMA EA	SKINNY DRUMS EA	4" X 90 M WHITE THERMO LF	4" X 90 M YELLOW THERMO LF	4" X 120 M WHITE THERMO LF	4" X 120 M YELLOW THERMO LF	8" X 90 M WHITE THERMO LF	8" X 120 M WHITE THERMO LF	24" X 120 M WHITE THERMO LF	THERMO MSG SCHOOL 120 M EA	THERMO STR ARROW 90 M EA	4" WHITE PAINT LF	4" YELLOW PAINT LF	8" WHITE PAINT LF	24" WHITE PAINT LF	PAINT MSG SCHOOL EA	PAINT STR ARROW EA	SNOW PLOWABLE MARKERS EA					
14CR.10751.4	Polk	1	US 74 WEST	FROM NC-108 TO I-26	2.2	32	2	4	100	2	500	12,056	11,616	2,904							6	35,728	23,452	800					222			
		2	US 74 EAST	FROM I-26 TO NC-108	1.99	32							11,782	11,352	2,838							6	34,916	22,919	1,720					222		
		3	US-74 EXIT RAMP	FROM I-26 EAST TO US-74 EAST	0.15	24							792	592			200						792	592	200					40		
		4	US-74 EXIT RAMP	FROM US-74 WEST TO I-26 WEST	0.41	24							2,164	2,164			200						2,164	2,164	200					40		
		5	US-74 ACCESS RAMP	FROM I-26 WEST TO US-74 EAST	0.34	24							1,795	1,000			200					3	1,795	1,000	200			3		40		
		6	US-74 EXIT RAMP	FROM US-74 EAST TO NC-108	0.3	24							1,584	895			200						1,584	895	200					40		
		7	US-74 ACCESS RAMP	FROM NC-108 TO US-74 WEST	0.5	24							2,640	990			200					3	2,640	990	200			3		40		
		8	US-176	FROM HENDERSON COUNTY LINE TO BRIDGE BRIDGE #5	0.52	24							5,595										5,491	5,491						10		
		9	US-176	FROM BRIDGE #5 TO PVT. CHG. AT HILL STREET	0.21	45							2,260							40	160	6	2,260	5,544						14		
		10	US-176	FROM HILL STREET TO SOUTH SALUDA CITY LIMITS	0.58	25							6,241								110	6	6,336	6,336						38		
		11	NC-9	FROM US-74 TO NC-108	3	22																	64,560	64,560		550	24			240		
TOTAL FOR PROJ NO. 14CR.10751.4					10.2		2	4	100	2	500	46,909	28,609	5,742	14,388	1,000	1,716	2,466	12	18	158,266	133,943	3,520	550	24	6	946					
												75,518	20,130															292,209				
14CR.20751.11	Polk	12	SR-1142	FROM SR-1151 TO INTERSECTION OF SR-1103 AND SR-1142 LOUISIANA AVE.	0.55	24																11,836	11,616		80							
		13	SR-1181	FROM SR-1142 TO US-176	0.75	24																	16,140	15,840		80						
		14	SR-1146	FROM US-176 TO SR-1181	0.16	24																	3,443	3,379		80						
		15	SR-1146 CURB SECTION	FROM US-176 TO SR-1181	0.39	16																	8,393	8,237		80						
		16	SR-1147	US 176 TO SR-1006	0.9	18																	19,368	19,008		80						
		17	SR-1147 CURB SECTION	FROM END CURB SECTION TO SR-1006	0.35	20																	7,532	4,620		80						
		18	SR-1534	FROM NC-108 TO SR-1521	2.11	19																	45,407	44,563		200						
19	SR-1534 CURB SECTION	FROM NC-108 TO END OF CURB SECTION	0.1	40																	4,488	4,488		80								
TOTAL FOR PROJ NO. 14CR.20751.11					5.31																	116,607	111,751		760							
GRAND TOTAL					15.51		2	4	100	2	500	46,909	28,609	5,742	14,388	1,000	1,716	2,466	12	18	274,873	245,694	3,520	1,310	24	6	946					
												75,518	20,130															520,567				