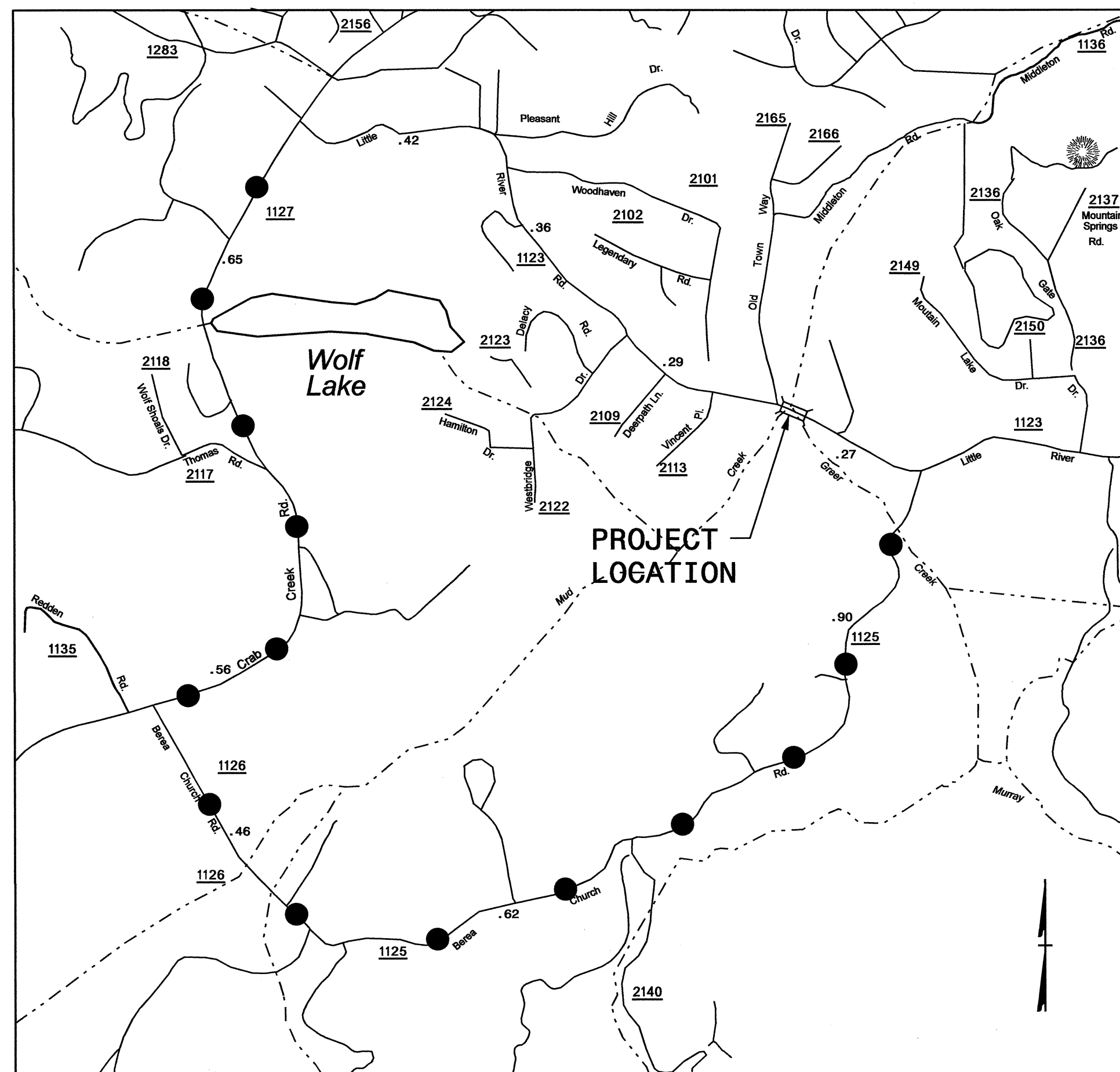


STATE OF NORTH CAROLINA  
DIVISION OF HIGHWAYS

**TRANSPORTATION MANAGEMENT PLAN**

**HENDERSON COUNTY**



**LOCATION: REPLACE BRIDGE #75 & #76 OVER MUD CR. & GREER CR. ON SR-1123**

**INDEX OF SHEETS**

SHEET NO.	TITLE
TMP-1	TITLE SHEET, LOCATION MAP AND INDEX OF SHEETS
TMP-1A	LIST OF APPLICABLE ROADWAY STANDARD DRAWINGS, LEGEND, AND TEMPORARY PAVEMENT MARKING SCHEDULE
TMP-1B	TRANSPORTATION OPERATIONS PLAN (MANAGEMENT STRATEGIES AND GENERAL NOTES)
TMP-2	SPECIAL SIGN DESIGN
TMP-3	PHASING
TMP-4	PLAN DETAILS
TMP-5	DETOUR ROUTE

SHEET NO.

TMP-1

**B-4147**

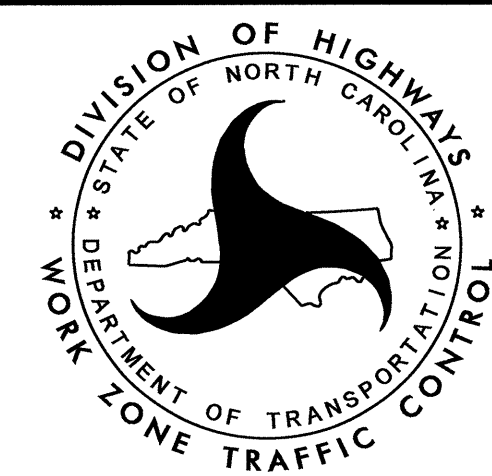
**TIP PROJECT:**

05-JAN-2012 10:42 \\dot\dfs\cot\Proj\TIP\Projects-B\B4147\Traffic\TrafficControl\TCP\TMP-1.dgn KBRoadwell AT 12244739



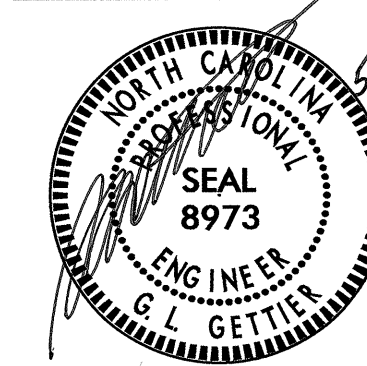
**N.C.D.O.T. WORK ZONE TRAFFIC CONTROL**  
1561 MAIL SERVICE CENTER (MSC) RALEIGH, NC 27699-1561  
750 N. GREENFIELD PARKWAY, GARNER, NC 27529 (DELIVERY)  
PHONE: (919) 713-2800 FAX: (919) 771-2745

J. S. BOURNE, P.E. STATE TRAFFIC MANAGEMENT ENGINEER  
G. L. GETTIER, P.E. TRAFFIC CONTROL PROJECT ENGINEER  
J. W. GILSTRAP TRAFFIC CONTROL PROJECT DESIGN ENGINEER  
KEN BROADWELL TRAFFIC CONTROL DESIGN ENGINEER



APPROVED: \_\_\_\_\_  
DATE: \_\_\_\_\_

SEAL



## ROADWAY STANDARD DRAWINGS

THE FOLLOWING ROADWAY STANDARDS AS SHOWN IN "ROADWAY STANDARD DRAWINGS" - PROJECT SERVICES UNIT - N.C. DEPARTMENT OF TRANSPORTATION - RALEIGH, N.C., DATED JANUARY 2012 ARE APPLICABLE TO THIS PROJECT AND BY REFERENCE HEREBY ARE CONSIDERED A PART OF THESE PLANS:

<u>STD. NO.</u>	<u>TITLE</u>
1101.01	ADVANCE WORK ZONE WARNING SIGNS
1101.02	TEMPORARY LANE CLOSURES
1101.03	TEMPORARY ROAD CLOSURES
1101.04	TEMPORARY SHOULDER CLOSURES
1101.05	WORK ZONE VEHICLE ACCESSES
1101.11	TRAFFIC CONTROL DESIGN TABLES
1110.01	STATIONARY WORK ZONE SIGNS
1110.02	PORTABLE WORK ZONE SIGNS
1130.01	DRUMS
1135.01	CONES
1145.01	BARRICADES - TYPE III
1150.01	FLAGGING DEVICES
1180.01	SKINNY DRUMS
1205.01	PAVEMENT MARKINGS - LINE TYPES AND OFFSETS
1205.02	PAVEMENT MARKINGS - TWO-LANE AND MULTI-LANE ROADWAYS
1205.04	PAVEMENT MARKINGS - INTERSECTIONS
1250.01	RAISED PAVEMENT MARKERS - INSTALLATION SPACING
1251.01	RAISED PAVEMENT MARKERS - PERMANENT AND TEMPORARY

### GENERAL

← DIRECTION OF TRAFFIC FLOW  
 ↖ NORTH ARROW

### TRAFFIC CONTROL DEVICES

▬ BARRICADE (TYPE III)  
 ▲ CONE  
 ● DRUM    ⊙ SKINNY DRUM

### TEMPORARY SIGNING

└ STATIONARY SIGN

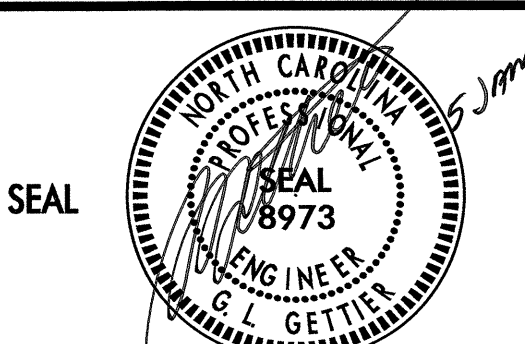
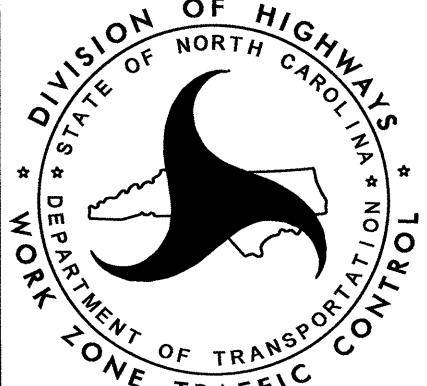
## LEGEND

### TEMPORARY PAVEMENT MARKINGS/MARKERS

PAINT 4"  
 PA WHITE EDGELINE  
 PD 2 FT. WHITE MINISKIP  
 PI YELLOW DOUBLE CENTER

PAVEMENT MARKERS  
 MH YELLOW / YELLOW TEMPORARY RAISED

05-JAN-2012 10:46  
 K:\Projects\11P\Projects-B\B4147\TrafficControl\TCP\TMP-1.dgn  
 K:\Projects\11P\Projects-B\B4147\TrafficControl\TCP\TMP-1.dgn

APPROVED: _____ DATE: _____ <div style="text-align: center;">  </div>		<h3>ROADWAY STANDARD DRAWINGS &amp; LEGEND</h3>
---	---	---

# GENERAL NOTES

## TRANSPORTATION OPERATIONS

### CONSTRUCTION

REMOVE AND REPLACE EXISTING STRUCTURES AND APPROACHES ALONG THE EXISTING ROADWAY ALIGNMENT AS SHOWN IN THE CONSTRUCTION PLANS.

### TMP DESIGN PARAMETERS

THE MAJORITY OF TRAFFIC WILL BE DETOURED OFF-SITE EXCEPT THAT LOCAL TRAFFIC WILL BE MAINTAINED TO SR 1136 (OLD TOWN WAY).

THE OFFSITE DETOUR WILL INCLUDE SR 1127, SR 1126, AND SR 1125 (SEE SHEET TMP-5).

CHANGES MAY BE REQUIRED WHEN PHYSICAL DIMENSIONS IN THE DETAIL DRAWINGS, STANDARD DETAILS AND ROADWAY DETAILS ARE NOT ATTAINABLE TO MEET FIELD CONDITIONS, OR RESULT IN DUPLICATE, OR UNDESIRED OVERLAPPING OF DEVICES. MODIFICATION MAY INCLUDE: MOVING, SUPPLEMENTING, COVERING OR REMOVAL OF DEVICES, AS DIRECTED BY THE ENGINEER.

THE FOLLOWING GENERAL NOTES APPLY AT ALL TIMES FOR THE DURATION OF THE CONSTRUCTION PROJECT EXCEPT WHEN OTHERWISE NOTED IN THE PLAN OR DIRECTED BY THE ENGINEER.

### TIME RESTRICTIONS

A) DO NOT STOP TRAFFIC AS FOLLOWS:

ROAD NAME	DAY AND TIME RESTRICTIONS	DURATION AND OPERATION
1. ALL ROADS	NONE	15 MIN. MAX. / TRAFFIC OPERATIONS

### LANE AND SHOULDER CLOSURE REQUIREMENTS

- B) REMOVE LANE CLOSURE DEVICES FROM THE LANE WHEN WORK IS NOT BEING PERFORMED BEHIND THE LANE CLOSURE OR WHEN A LANE CLOSURE IS NO LONGER NEEDED, OR AS DIRECTED BY THE ENGINEER.
- C) WHEN PERSONNEL AND/OR EQUIPMENT ARE WORKING WITHIN 15 FT OF AN OPEN TRAVEL LANE, CLOSE THE NEAREST OPEN SHOULDER USING ROADWAY STANDARD DRAWING NO. 1101.04 UNLESS THE WORK AREA IS PROTECTED BY BARRIER OR GUARDRAIL OR A LANE CLOSURE IS INSTALLED.
- D) WHEN PERSONNEL AND/OR EQUIPMENT ARE WORKING ON THE SHOULDER ADJACENT TO AN UNDIVIDED FACILITY AND WITHIN 5 FT OF AN OPEN TRAVEL LANE, CLOSE THE NEAREST OPEN TRAVEL LANE USING ROADWAY STANDARD DRAWING NO. 1101.02 UNLESS THE WORK AREA IS PROTECTED BY BARRIER OR GUARDRAIL.
- WHEN PERSONNEL AND/OR EQUIPMENT ARE WORKING ON THE SHOULDER ADJACENT TO A DIVIDED FACILITY AND WITHIN 10 FT OF AN OPEN TRAVEL LANE, CLOSE THE NEAREST OPEN TRAVEL LANE USING ROADWAY STANDARD DRAWING NO. 1101.02 UNLESS THE WORK AREA IS PROTECTED BY BARRIER OR GUARDRAIL.
- E) WHEN PERSONNEL AND/OR EQUIPMENT ARE WORKING WITHIN A LANE OF TRAVEL OF AN UNDIVIDED OR DIVIDED FACILITY, CLOSE THE LANE ACCORDING TO THE TRAFFIC CONTROL PLANS, ROADWAY STANDARD DRAWINGS OR AS DIRECTED BY THE ENGINEER. CONDUCT THE WORK SO THAT ALL PERSONNEL AND/OR EQUIPMENT REMAIN WITHIN THE CLOSED TRAVEL LANE.
- F) DO NOT WORK SIMULTANEOUSLY WITHIN 15 FT ON BOTH SIDES OF AN OPEN TRAVELWAY, RAMP OR LOOP WITHIN THE SAME LOCATION UNLESS PROTECTED WITH GUARDRAIL OR BARRIER.
- G) PROVIDE TRAFFIC CONTROL FOR APPROPRIATE LANE CLOSURES FOR SURVEYING DONE BY THE DEPARTMENT.

### PAVEMENT EDGE DROP OFF REQUIREMENTS

- H) BACKFILL AT A 6:1 SLOPE UP TO THE EDGE AND ELEVATION OF EXISTING PAVEMENT IN AREAS ADJACENT TO AN OPENED TRAVEL LANE THAT HAS A DROP-OFF AS FOLLOWS:
- BACKFILL DROP-OFFS THAT EXCEED 2 INCHES ON ROADWAYS WITH POSTED SPEED LIMITS OF 45 MPH OR GREATER.
- BACKFILL DROP-OFFS THAT EXCEED 3 INCHES ON ROADWAYS WITH POSTED SPEED LIMITS LESS THAN 45 MPH.
- BACKFILL WITH SUITABLE COMPACTED MATERIAL, AS APPROVED BY THE ENGINEER, AT NO EXPENSE TO THE DEPARTMENT.

### TRAFFIC PATTERN ALTERATIONS

- I) NOTIFY THE ENGINEER A MINIMUM OF THIRTY (30) CALENDAR DAYS PRIOR TO ANY TRAFFIC PATTERN ALTERATION.

### SIGNING

- J) INSTALL ADVANCE WORK ZONE WARNING SIGNS WHEN WORK IS WITHIN 40 FT FROM THE EDGE OF TRAVEL LANE AND NO MORE THAN THREE (3) DAYS PRIOR TO THE BEGINNING OF CONSTRUCTION.
- K) PROVIDE SIGNING AND DEVICES REQUIRED TO CLOSE THE ROAD ACCORDING TO THE ROADWAY STANDARD DRAWINGS AND TRAFFIC CONTROL PLANS.
- PROVIDE SIGNING REQUIRED FOR THE OFF-SITE DETOUR ROUTE AS SHOWN IN THE TRAFFIC CONTROL PLANS.
- L) COVER OR REMOVE ALL SIGNS AND DEVICES REQUIRED TO CLOSE THE ROAD WHEN ROAD CLOSURE IS NOT IN OPERATION.
- COVER OR REMOVE ALL SIGNS REQUIRED FOR THE OFF-SITE DETOUR WHEN THE DETOUR IS NOT IN OPERATION.
- M) ENSURE ALL NECESSARY SIGNING IS IN PLACE PRIOR TO ALTERING ANY TRAFFIC PATTERN.

### TRAFFIC CONTROL DEVICES

- N) WHEN LANE CLOSURES ARE NOT IN EFFECT SPACE CHANNELIZING DEVICES IN WORK AREAS NO GREATER IN FEET THAN TWICE THE POSTED SPEED LIMIT (MPH) EXCEPT, 10 FT ON-CENTER IN RADII, AND 3 FT OFF THE EDGE OF AN OPEN TRAVELWAY. REFER TO STANDARD SPECIFICATIONS FOR ROADS AND STRUCTURES SECTIONS 1130 (DRUMS), 1135 (CONES) AND 1180 (SKINNY DRUMS) FOR ADDITIONAL REQUIREMENTS.
- O) PLACE TYPE III BARRICADES WITH "ROAD CLOSED" SIGN R11-2 ATTACHED OF SUFFICIENT LENGTH TO CLOSE ENTIRE ROADWAY.

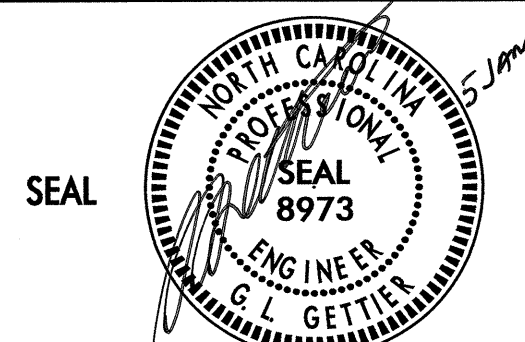
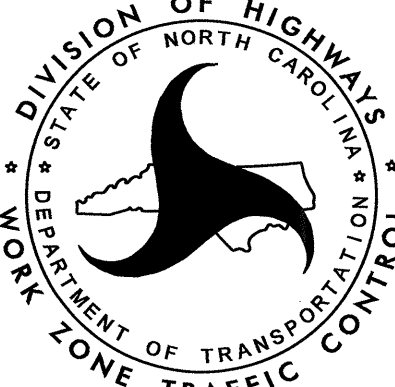
### PAVEMENT MARKINGS AND MARKERS

- P) INSTALL TEMPORARY PAVEMENT MARKINGS AND TEMPORARY PAVEMENT MARKERS ON INTERIM LAYERS OF PAVEMENT AS FOLLOWS:
- | ROAD NAME    | MARKING | MARKER           |
|--------------|---------|------------------|
| 1. ALL ROADS | PAINT   | TEMPORARY RAISED |
- Q) PLACE ONE APPLICATION OF PAINT FOR TEMPORARY TRAFFIC PATTERNS. PLACE A SECOND APPLICATION OF PAINT SIX (6) MONTHS AFTER THE INITIAL APPLICATION AND EVERY SIX MONTHS AS DIRECTED BY THE ENGINEER.
- R) TIE PROPOSED PAVEMENT MARKING LINES TO EXISTING PAVEMENT MARKING LINES.
- S) REMOVE/REPLACE ANY CONFLICTING/DAMAGED PAVEMENT MARKINGS AND MARKERS BY THE END OF EACH DAY'S OPERATION.

### MISCELLANEOUS

- T) IN THE EVENT A TIE-IN CANNOT BE MADE IN ONE DAYS TIME, BRING THE TIE-IN AREA TO AN APPROPRIATE ROADWAY ELEVATION, AS DETERMINED BY THE ENGINEER. PLACE BLACK ON ORANGE "LOOSE GRAVEL" SIGNS (W8-7) AND BLACK ON ORANGE "PAVEMENT ENDS" SIGNS (W8-3) 200 FT AND 400 FT RESPECTIVELY IN ADVANCE OF THE UNEVEN AREAS. USE DRUMS TO DELINEATE THE EDGE OF ROADWAY ALONG UNPAVED AREAS.

05-JAN-2012 10:44  
C:\Users\jg\Documents\Projects-B\B4147\Traffic\TrafficControl\TCP\TMP-1.dgn  
KDC\GOWEN AT TEL24739

APPROVED: _____ DATE: _____ 		<h2 style="margin: 0;">TRANSPORTATION OPERATIONS &amp; GENERAL NOTES</h2>
--	---	---





## PHASING

### PHASE I

- STEP 1: - CONTRACTOR SHALL INSTALL OFF-SITE DETOUR ROUTE SIGN ASSEMBLIES FOR THE CLOSING OF SR 1123 (LITTLE RIVER ROAD, -L-) TO THRU TRAFFIC (SEE SHEETS TMP-4 AND TMP-5).
- CONTRACTOR SHALL, USING ROADWAY STANDARD DRAWING NO. 1101.03, SHEET 1 OF 9 AND SHEET TMP-4, CLOSE SR 1123 (LITTLE RIVER ROAD, -L-), AND PLACE THRU TRAFFIC ONTO THE DETOUR.
  - CONTRACTOR SHALL, USING ROADWAY STANDARD DRAWING NO. 1101.01, SHEET 3 OF 3 AND SHEET TMP-4, INSTALL WORK ZONE ADVANCE WARNING SIGNS.

NOTE: TRAFFIC SHALL BE MAINTAINED TO AND ON SR 1136 (OLD TOWN WAY, -Y-) THROUGHOUT CONSTRUCTION.

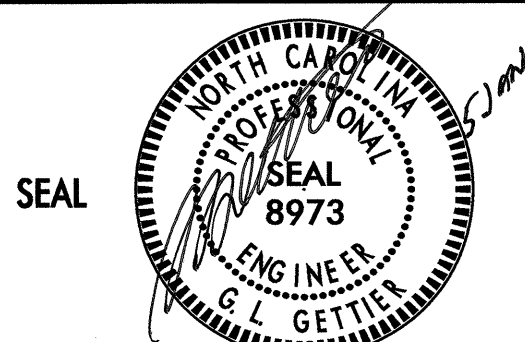
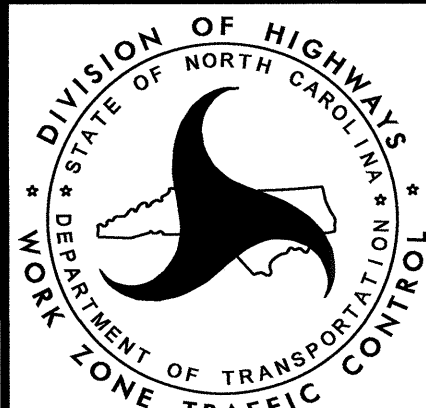
- STEP 2: - CONTRACTOR SHALL, AWAY FROM TRAFFIC, DEMOLISH THE EXISTING STRUCTURES AND CONSTRUCT THE PROPOSED STRUCTURE AND ROADWAY UP TO, BUT NOT INCLUDING THE FINAL LAYER OF SURFACE COURSE FROM STA. 19+92 +/- -L- TO STA. 26+00 -L- (SEE SHEET TMP-4 AND THE CONSTRUCTION PLANS).
- CONSTRUCTION OF THE ROADWAYS FROM STA. 15+50 -L- TO STA. 19+92 +/- -L- AND STA. 13+50 -Y- TO THE -L- INTERSECTION WILL REQUIRE A FILL SECTION ON EXISTING ROADWAYS. THE CONTRACTOR SHALL, AS DIRECTED BY THE ENGINEER, AND USING ROADWAY STANDARD DRAWING NO. 1101.02, SHEET 1 OF 15, CONSTRUCT PROPOSED ROADWAYS UP TO, BUT NOT INCLUDING THE FINAL LAYER OF SURFACE COURSE BY PLACING AGGREGATE BASE COURSE, INCIDENTAL STONE OR ASPHALT BASE COURSE AND BINDER COURSE TO MAINTAIN ACCESS. PLACE TEMPORARY PAVEMENT MARKINGS (PAINT) AND TEMPORARY RAISED PAVEMENT MARKERS AND OPEN TO TRAFFIC (SEE SHEET TMP-4 AND THE CONSTRUCTION PLANS).

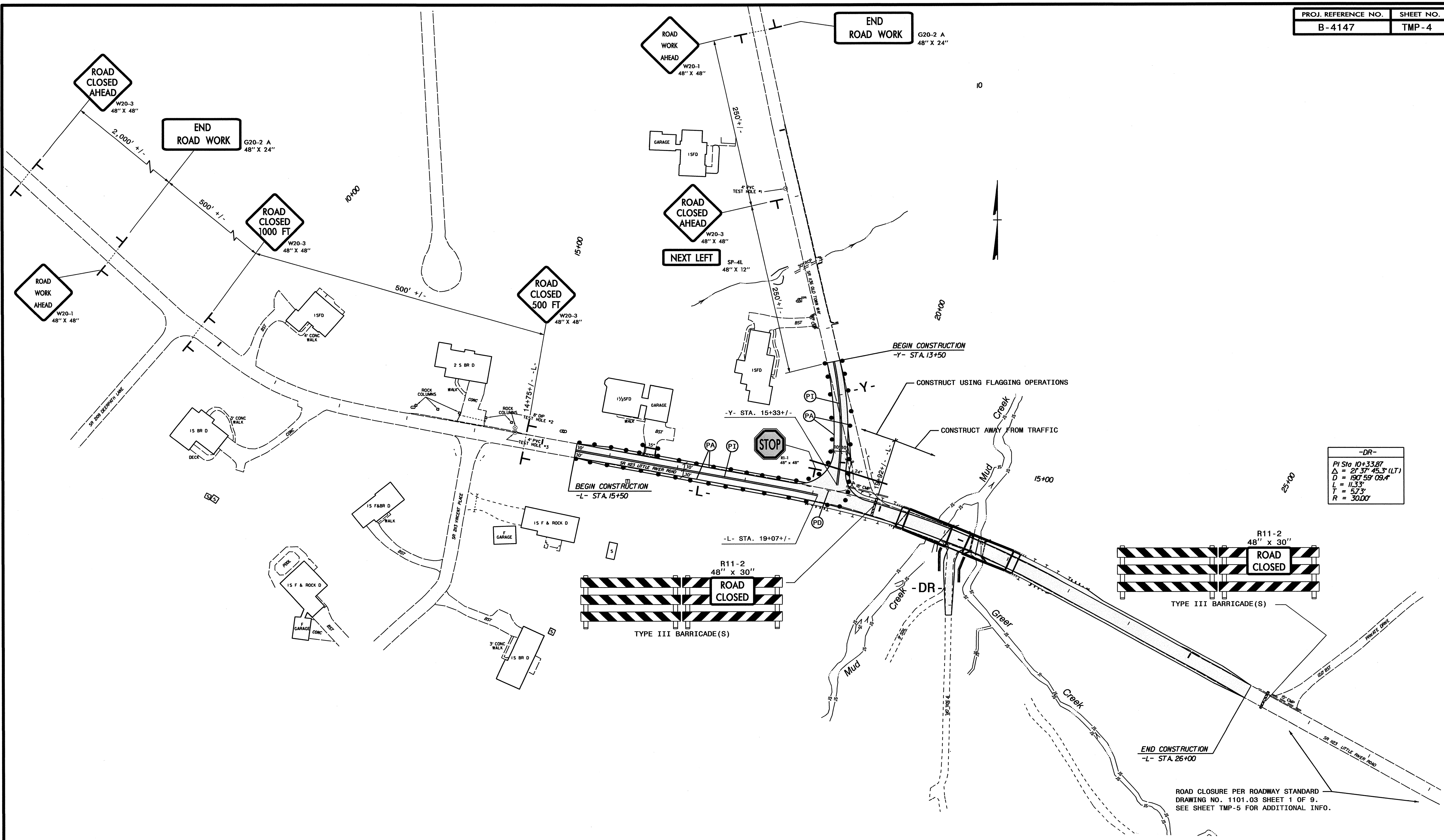
NOTE: CONTRACTOR SHALL PLACE TEMPORARY PAVEMENT MARKINGS (PAINT) ON ASPHALT BINDER/SURFACE COURSE OR DRUMS ON AGGREGATE BASE COURSE/INCIDENTAL STONE TO DELINEATE THE TRAVELWAYS DURING CONSTRUCTION.

### PHASE II

- STEP 1: - CONTRACTOR SHALL, AWAY FROM TRAFFIC AND USING FLAGGING OPERATIONS PER ROADWAY STANDARD DRAWING NO. 1101.02, SHEET 1 OF 15, PAVE THE FINAL LAYER OF SURFACE COURSE AND PLACE THE FINAL PAVEMENT MARKINGS (SEE THE CONSTRUCTION PLANS AND THE FINAL PAVEMENT MARKING PLANS).
- STEP 2: - CONTRACTOR SHALL REMOVE OFF-SITE DETOUR SIGN ASSEMBLIES, TRAFFIC CONTROL DEVICES AND OPEN ROADWAYS TO THE FINAL TRAFFIC PATTERN.

05-JAN-2012 12:43  
 \\dot\dfs\op\01\Proj\TIP\Projects-B\B4147\TrafficControl\TCP\TMP-3.dgn  
 kbroadwell AT TE244739

APPROVED: _____ DATE: _____ 		<h1 style="margin: 0;">PHASING</h1>
--	---	-------------------------------------



-DR-  
 PI Sta. 10+33.87  
 $\Delta = 21^\circ 31' 45.3" (LT)$   
 $D = 1907.59' 09.4"$   
 $L = 11.33'$   
 $T = 5.73'$   
 $R = 3000'$

ROAD CLOSURE PER ROADWAY STANDARD  
 DRAWING NO. 1101.03 SHEET 1 OF 9.  
 SEE SHEET TMP-5 FOR ADDITIONAL INFO.

01-OCT-2012 07:56  
 \\dot\dfs-00\ol\Pro\TIPProjects-B\4147\Traffic\TrafficControl\TCP\TMP-4.dgn  
 kbr\oodwell AT 12266004

APPROVED: \_\_\_\_\_ DATE: \_\_\_\_\_

SEAL

PLAN DETAILS

