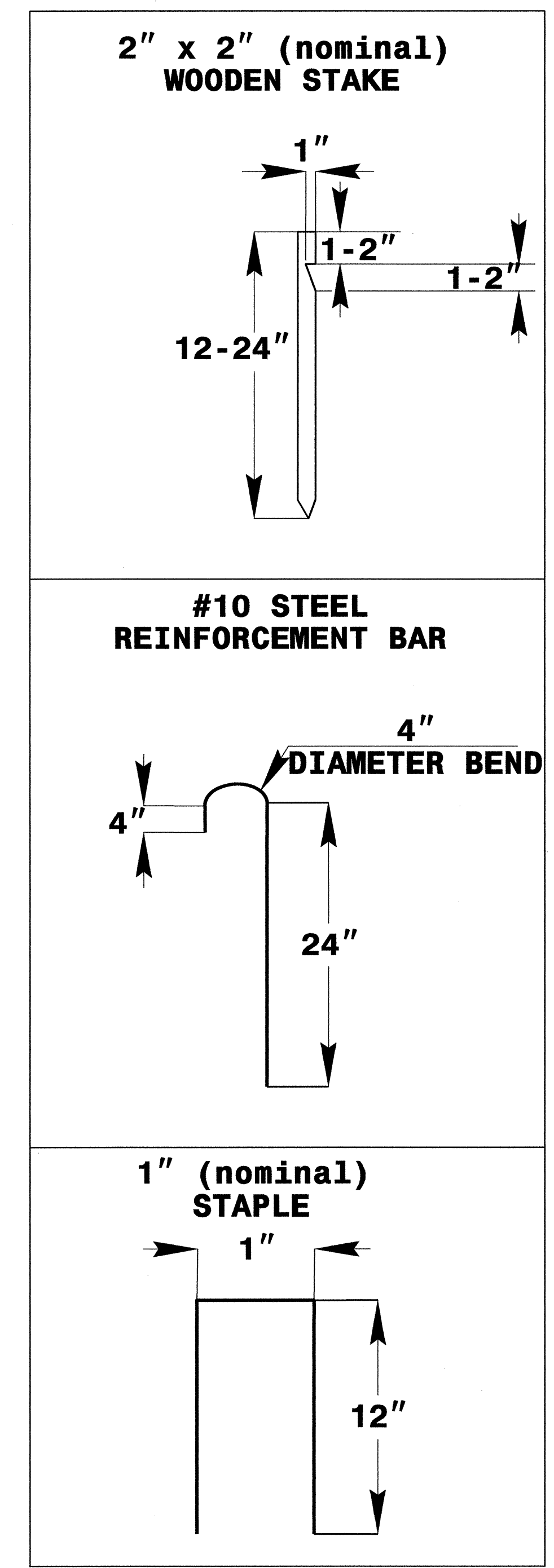
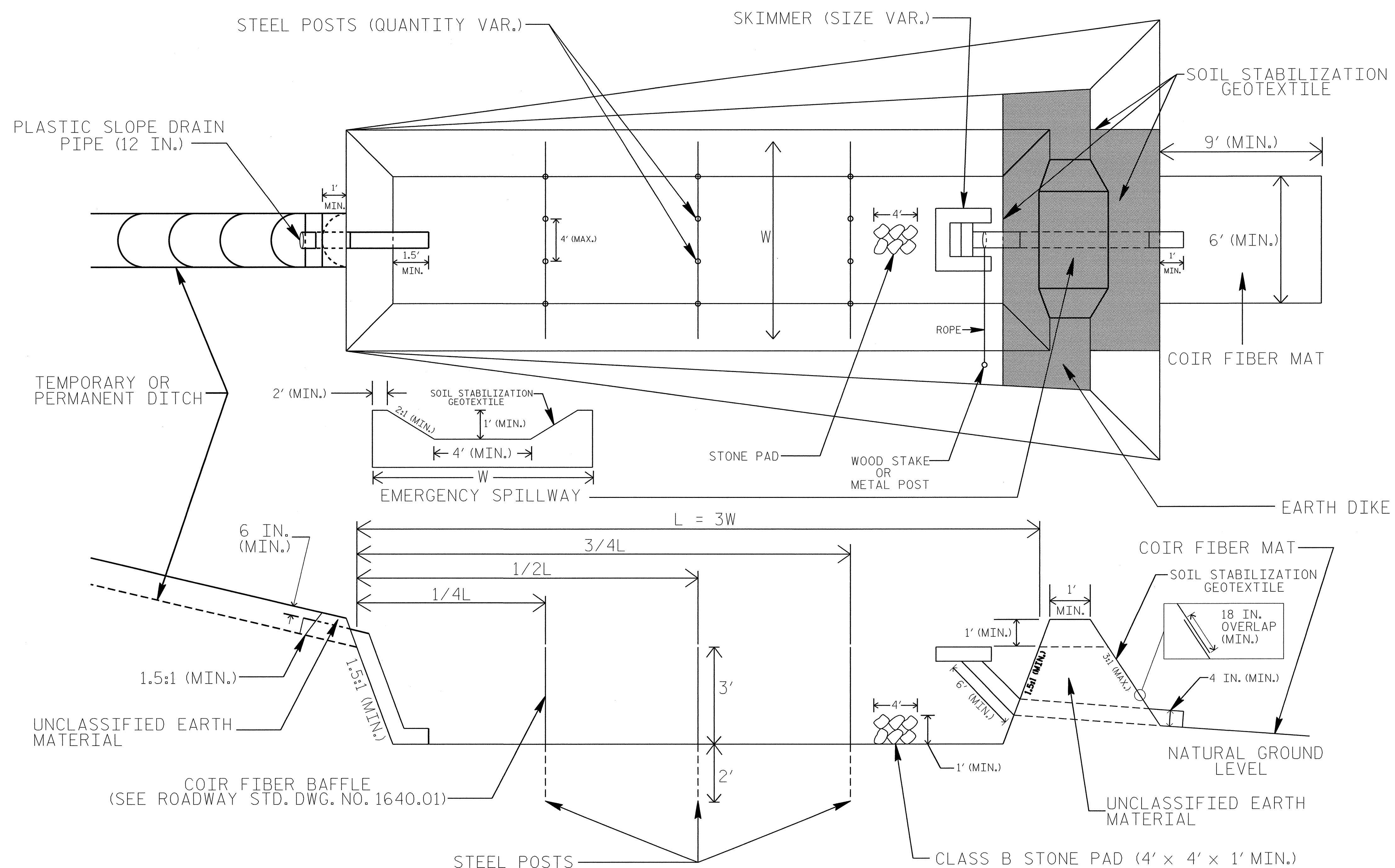




PROJECT REFERENCE NO. B-4147	SHEET NO. EC-2
RW SHEET NO.	
ROADWAY DESIGN ENGINEER	HYDRAULICS ENGINEER

# SKIMMER BASIN WITH BAFFLES DETAIL



## COIR FIBER MAT ANCHOR OPTIONS

### NOTES

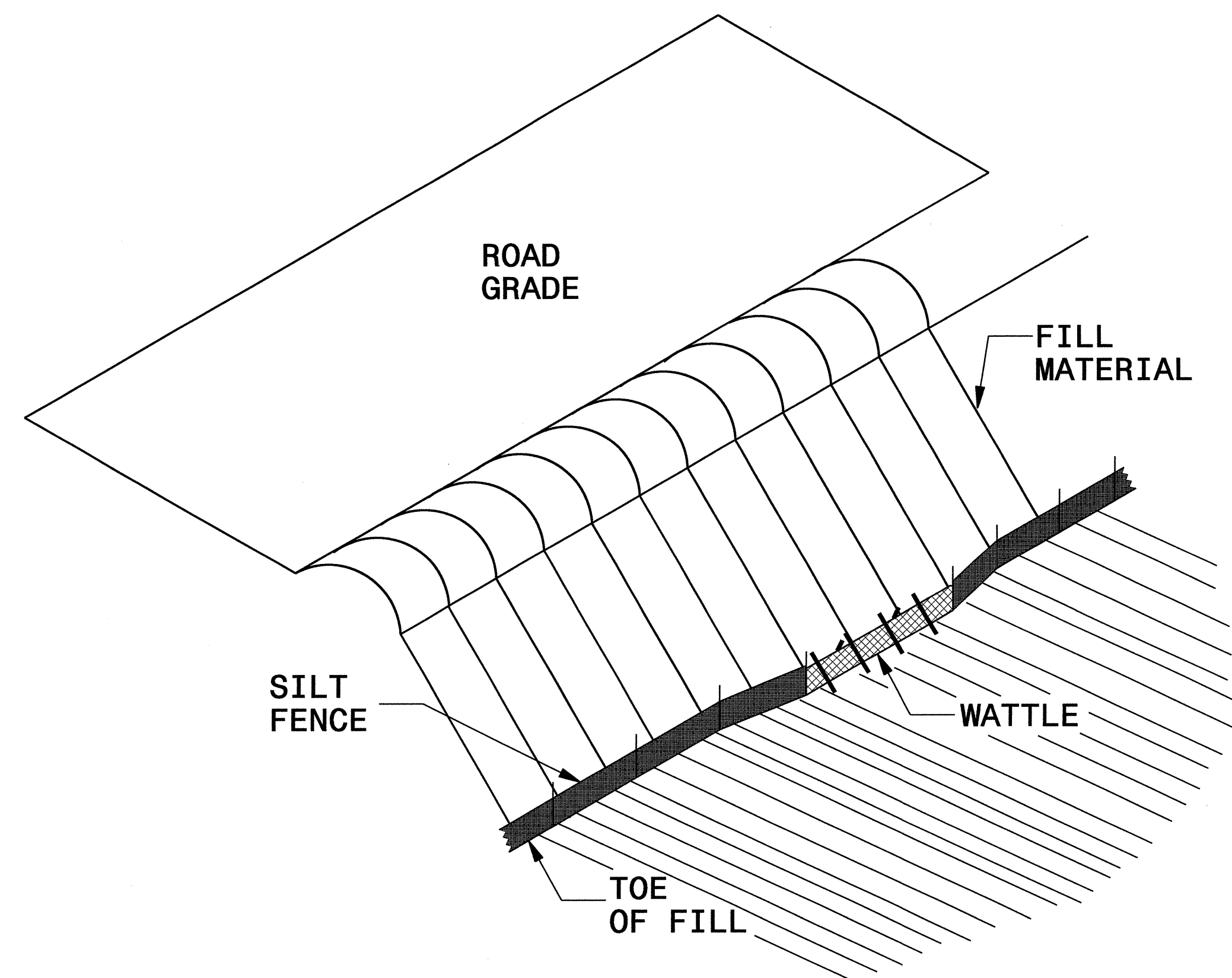
1. SEED AND PLACE MATTING FOR EROSION CONTROL ON INTERIOR AND EXTERIOR SIDESLOPES.
2. LIMIT EARTH DIKE HEIGHT TO 5 FT.
3. FOR BASIN DEPTH OF 3 FT., THE MINIMUM BASIN WIDTH SHALL BE 9 FT.
4. DETERMINE EMERGENCY SPILLWAY LENGTH (FT.) USING  $Q/0.8$ , WHERE Q IS FLOW RATE (CFS) INTO BASIN.
5. PLASTIC SLOPE DRAIN PIPE AT INLET OF BASIN MAY BE REPLACED BY FILTRATION GEOTEXTILE AS DIRECTED.
6. SOIL STABILIZATION GEOTEXTILE FOR EMERGENCY SPILLWAY SHALL BE ONE CONTINUOUS PIECE OF MATERIAL OR OVERLAPPED 18 IN. (MIN.).

NOT TO SCALE

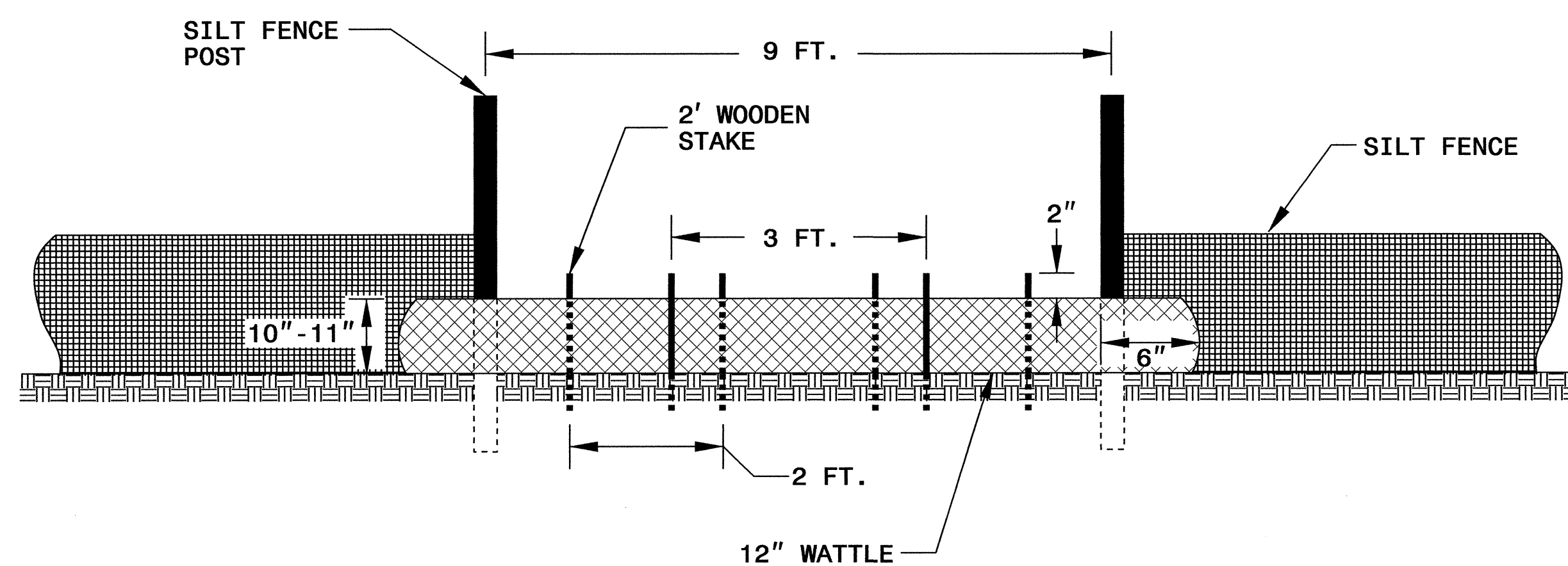


# SILT FENCE WATTLE BREAK DETAIL

PROJECT REFERENCE NO. B-4147	SHEET NO. EC-2A
RW SHEET NO.	
ROADWAY DESIGN ENGINEER	HYDRAULICS ENGINEER



**ISOMETRIC VIEW**

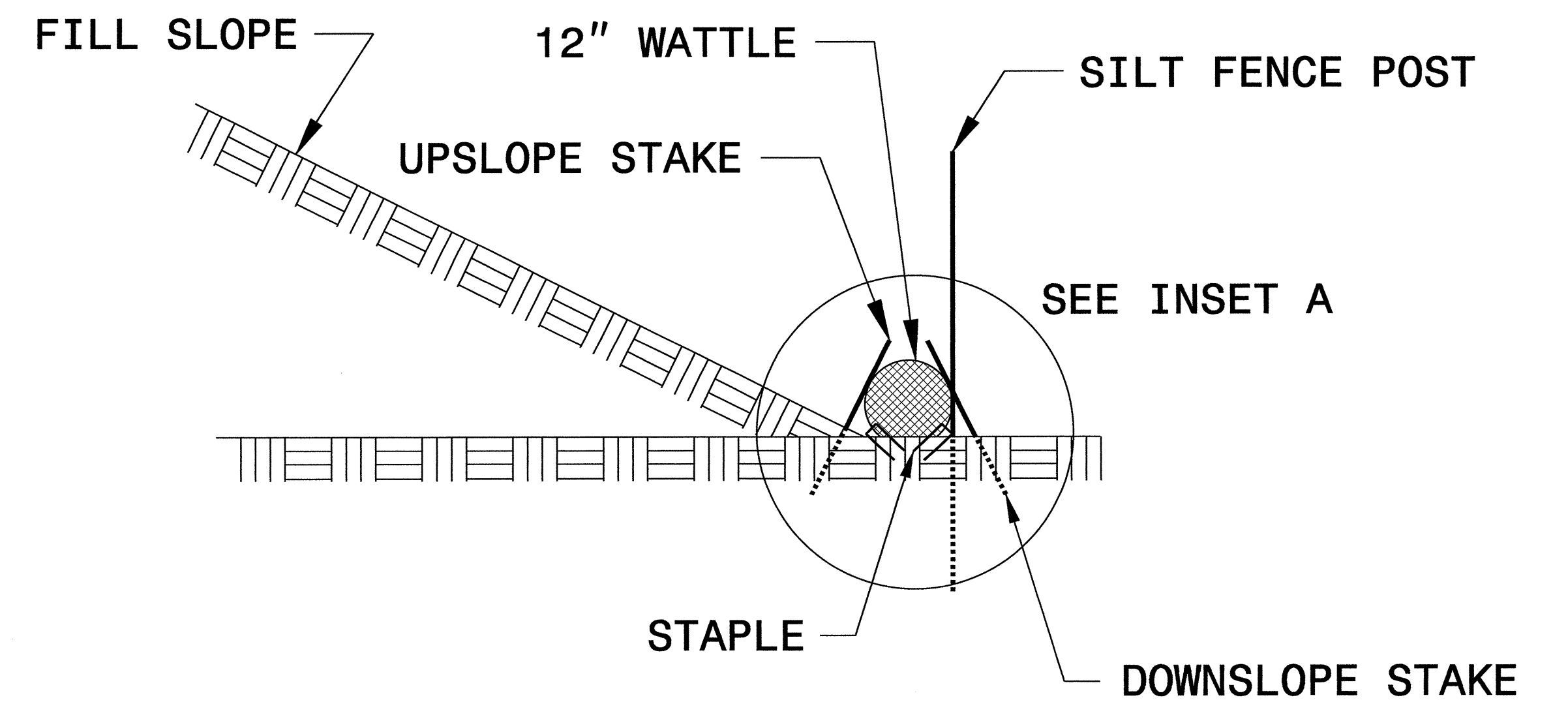
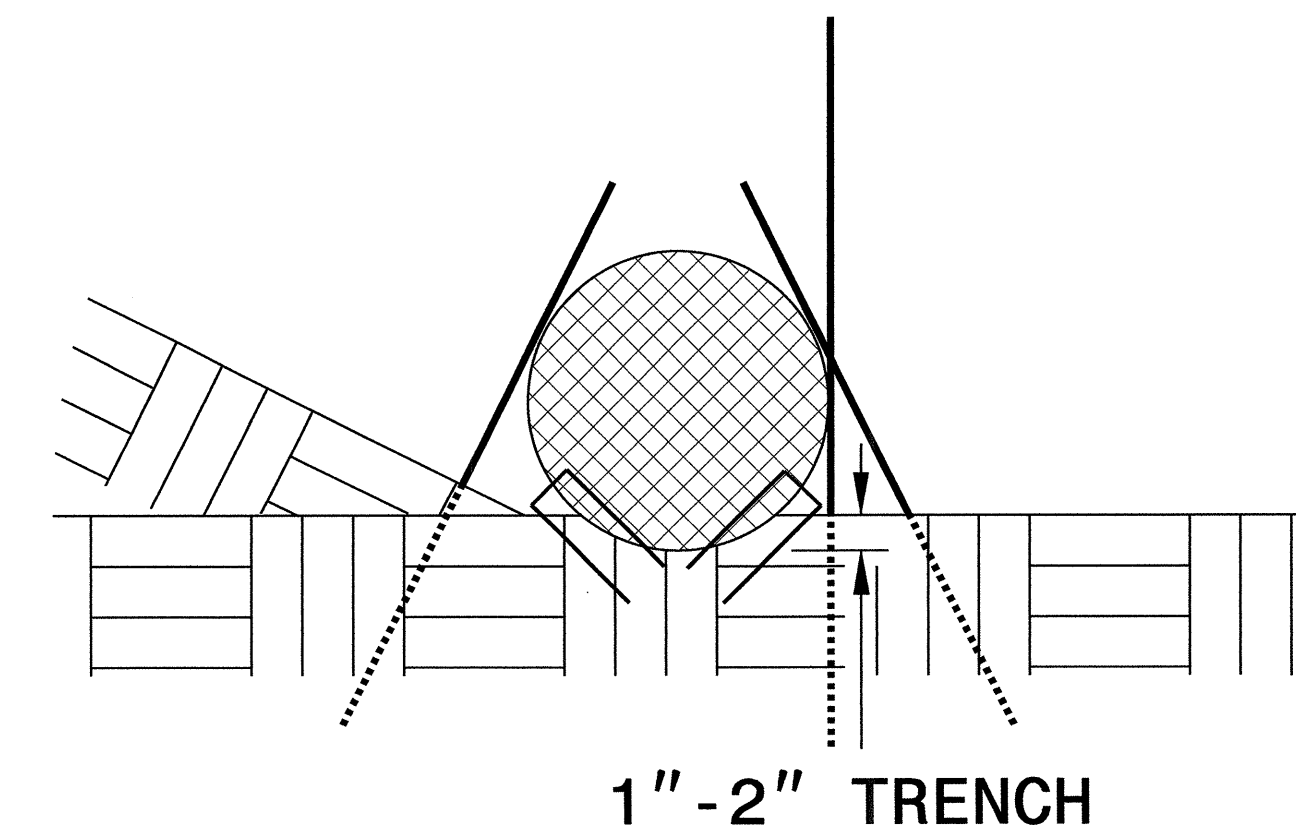


**VIEW FROM SLOPE**

**NOTES:**

- USE MINIMUM 12 IN. DIAMETER EXCELSIOR WATTLE AND LENGTH OF 10 FT.
- EXCAVATE A 1 TO 2 INCH TRENCH FOR WATTLE TO BE PLACED.
- DO NOT PLACE WATTLE ON TOE OF SLOPE.
- USE 2 FT. WOODEN STAKES WITH A 2 IN. BY 2 IN. NOMINAL CROSS SECTION.
- INSTALL A MINIMUM OF 2 UPSLOPE STAKES AND 4 DOWNSLOPE STAKES AT AN ANGLE TO WEDGE WATTLE TO GROUND.
- PROVIDE STAPLES MADE OF 0.125 IN. DIAMETER STEEL WIRE FORMED INTO A U SHAPE NOT LESS THAN 12" IN LENGTH.
- INSTALL STAPLES APPROXIMATELY EVERY 1 LINEAR FOOT ON BOTH SIDES OF WATTLE AND AT EACH END TO SECURE IT TO THE SOIL.
- WATTLE INSTALLATION CAN BE ON OUTSIDE OF THE SILT FENCE AS DIRECTED.
- INSTALL TEMPORARY SILT FENCE IN ACCORDANCE WITH SECTION 1605 OF THE STANDARD SPECIFICATIONS.

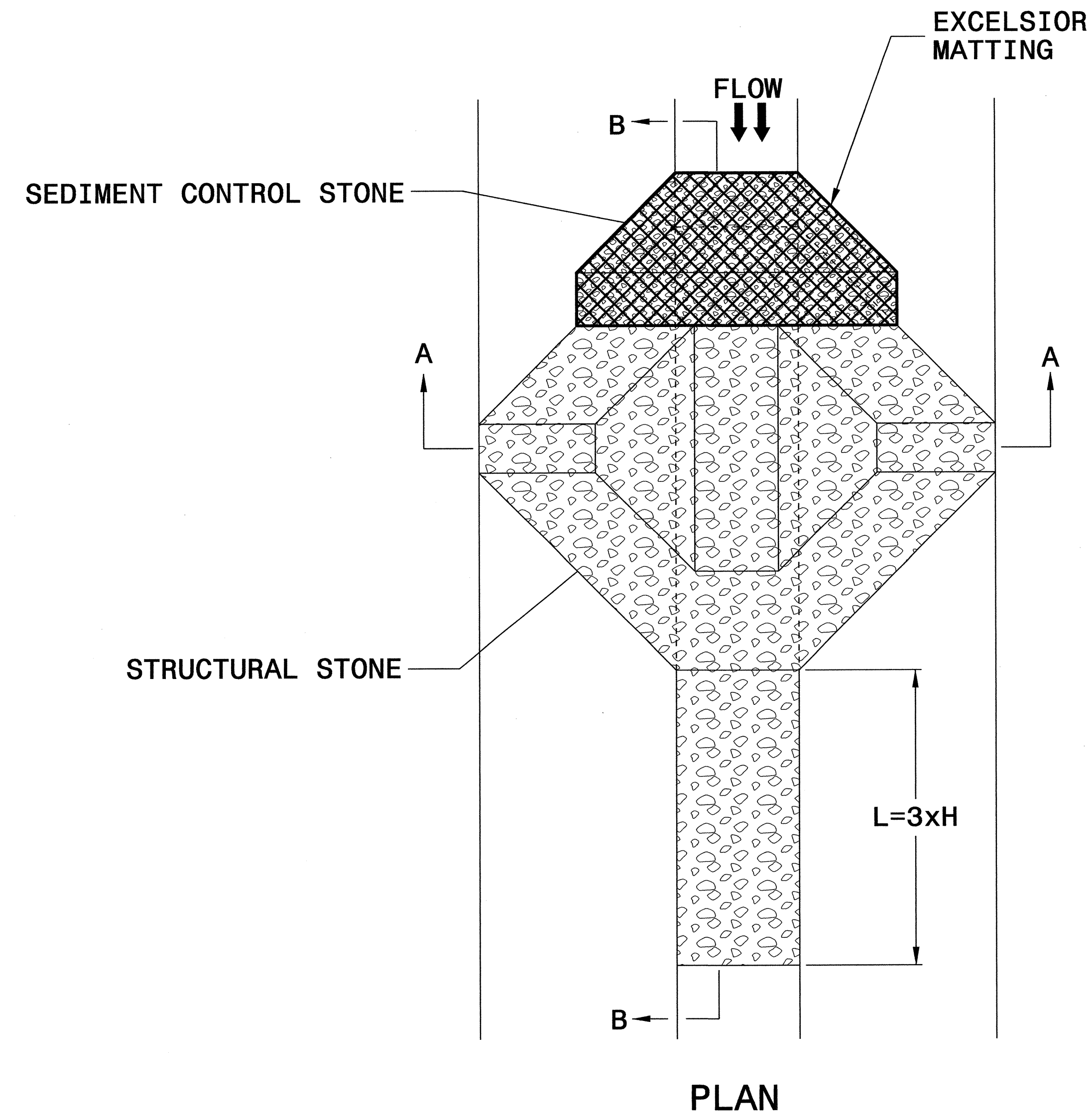
**INSET A**



**SIDE VIEW**

PROJECT REFERENCE NO. B-4147	SHEET NO. EC-2B
RW SHEET NO.	
ROADWAY DESIGN ENGINEER	HYDRAULICS ENGINEER

# TEMPORARY ROCK SILT CHECK TYPE 'A' WITH EXCELSIOR MATTING AND POLYACRYLAMIDE (PAM)

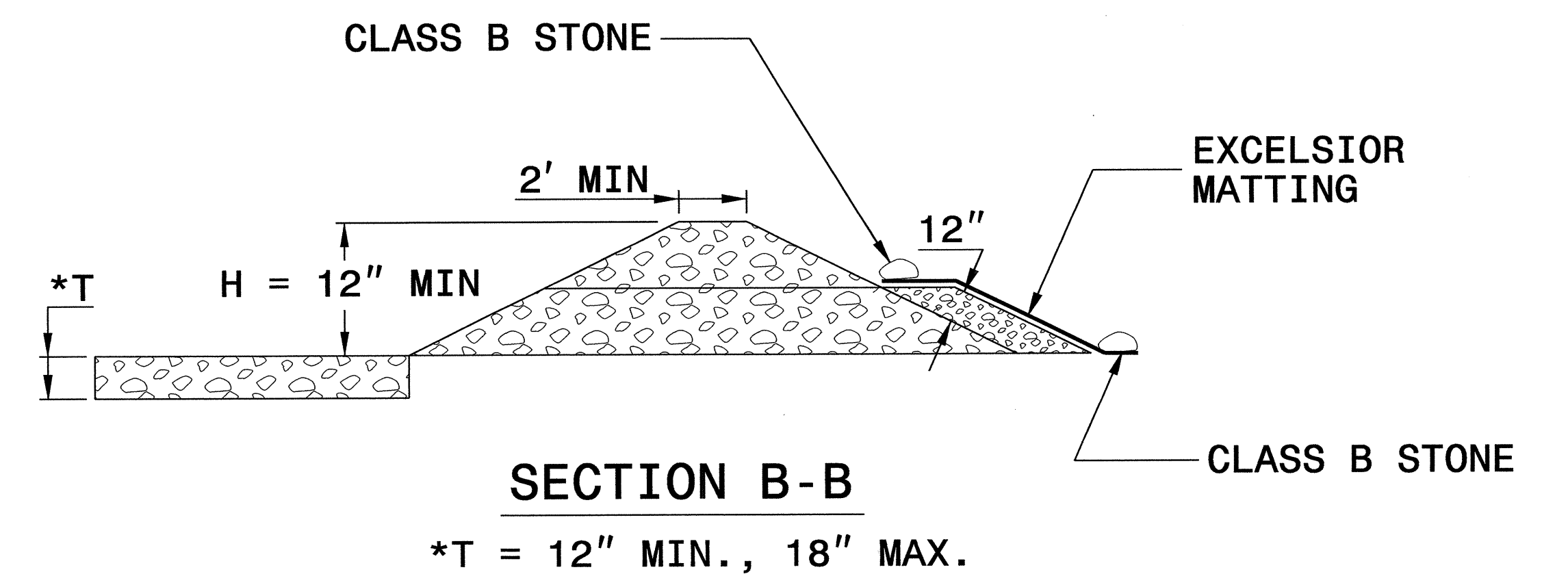
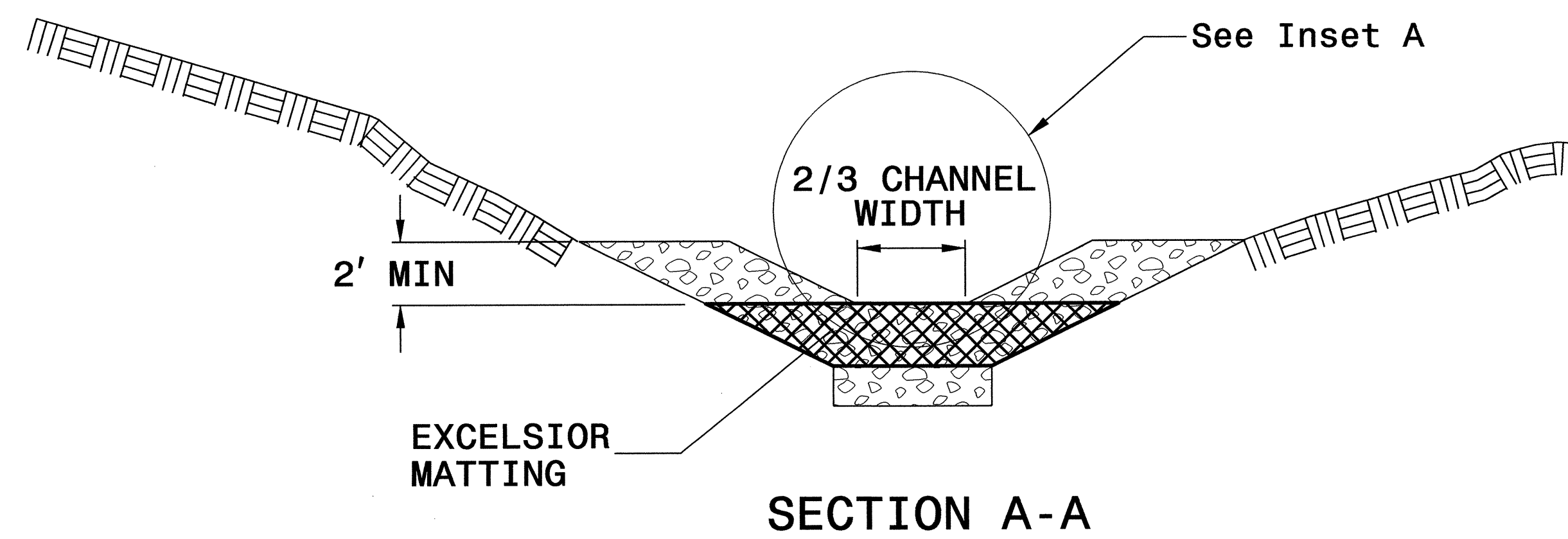
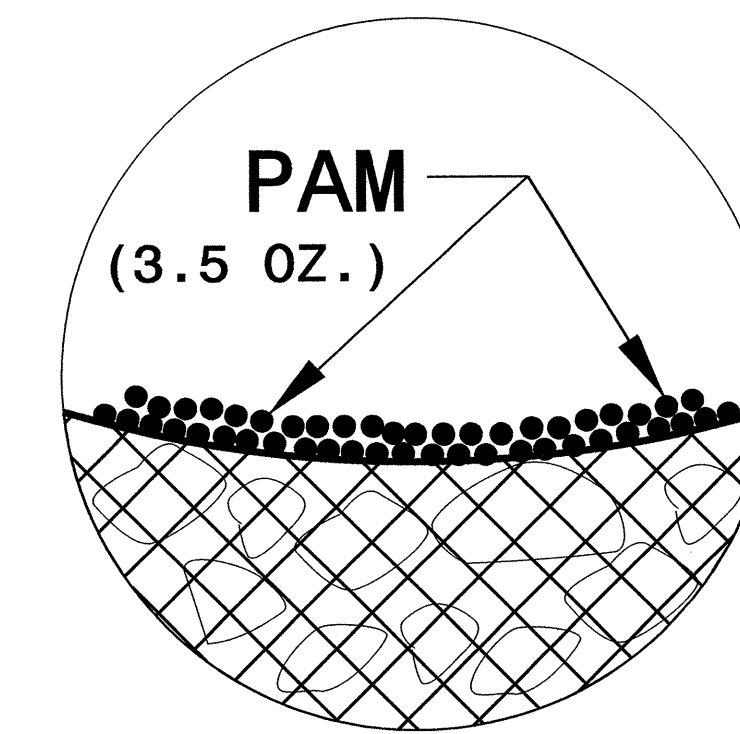


## NOTES

USE EXCELSIOR FOR MATTING MATERIAL AND ANCHOR MATTING SECTION AT TOP AND BOTTOM WITH CLASS B STONE.

PRIOR TO POLYACRYLAMIDE (PAM) APPLICATION, OBTAIN A SOIL SAMPLE FROM PROJECT LOCATION, AND FROM OFFSITE MATERIAL, AND ANALYZE FOR APPROPRIATE PAM FLOCCULANT TO BE APPLIED TO EACH ROCK SILT CHECK.

INITIALLY APPLY 3.5 OUNCES OF POLYACRYLAMIDE (PAM) TO TOP OF MATTING SECTION AND AFTER EVERY RAINFALL EVENT THAT EQUALS OR EXCEEDS 0.50 INCHES.



NOT TO SCALE



DIVISION OF HIGHWAYS  
STATE OF NORTH CAROLINA

---



---

PROJECT REFERENCE NO. <i>B-4147</i>	SHEET NO. <i>EC-3A</i>
ROADWAY DESIGN ENGINEER	HYDRAULICS ENGINEER

# ***SOIL STABILIZATION TIMEFRAMES***

<i>SITE DESCRIPTION</i>	<i>STABILIZATION TIME</i>	<i>TIMEFRAME EXCEPTIONS</i>
PERIMETER DIKES, SWALES, DITCHES AND SLOPES	7 DAYS	NONE
HIGH QUALITY WATER (HQW) ZONES	7 DAYS	NONE
SLOPES STEEPER THAN 3:1	7 DAYS	IF SLOPES ARE 10' OR LESS IN LENGTH AND ARE NOT STEEPER THAN 2:1, 14 DAYS ARE ALLOWED.
SLOPES 3:1 OR FLATTER	14 DAYS	7 DAYS FOR SLOPES GREATER THAN 50' IN LENGTH.
ALL OTHER AREAS WITH SLOPES FLATTER THAN 4:1	14 DAYS	NONE, EXCEPT FOR PERIMETERS AND HQW ZONES.

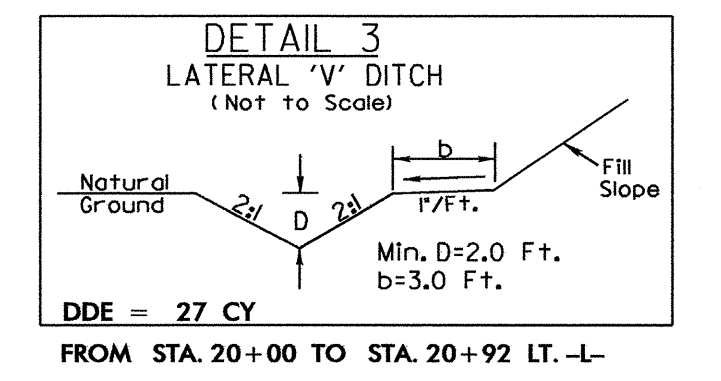
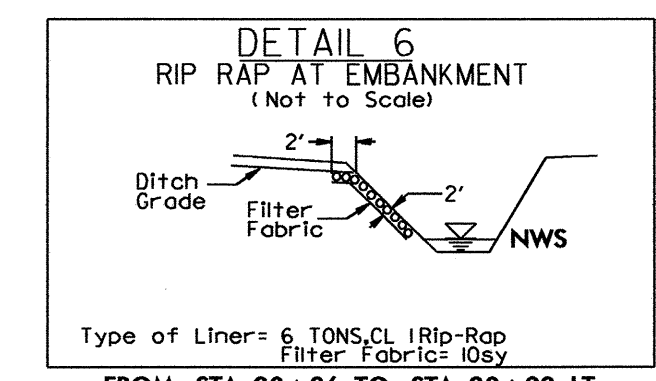
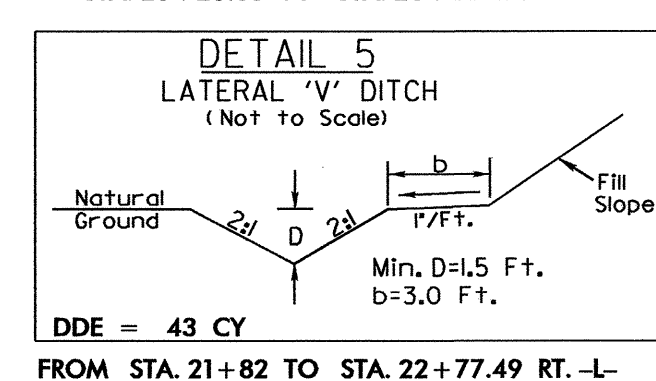
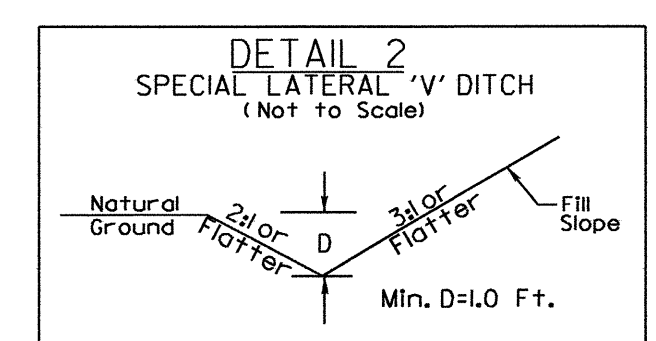
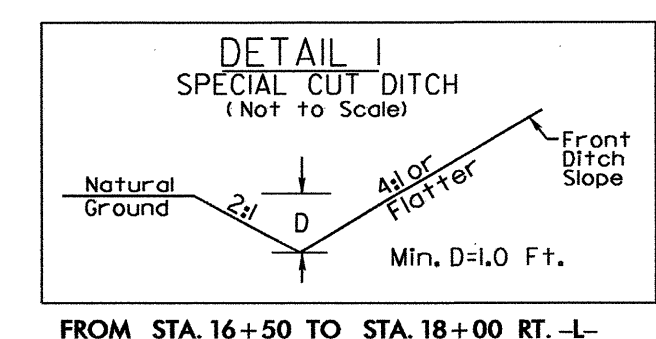


8/17/99

PROJECT REFERENCE NO.	SHEET NO.
B-4147	EC-4/CONST.4
RW SHEET NO.	
ROADWAY DESIGN ENGINEER	HYDRAULICS ENGINEER

**CLEARING AND GRUBBING EROSION CONTROL FOR CONSTRUCTION SHEET 4**

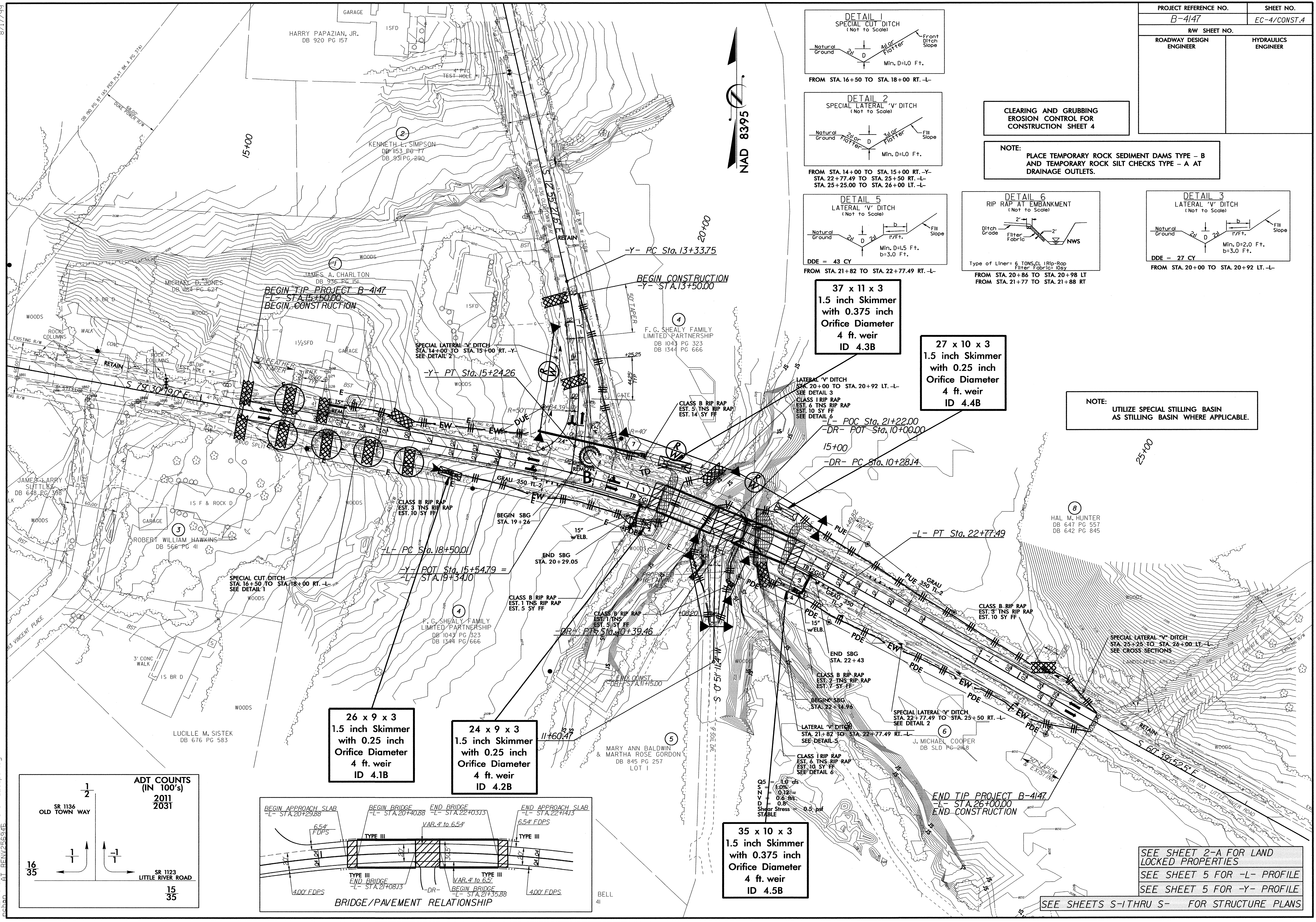
**NOTE:** PLACE TEMPORARY ROCK SEDIMENT DAMS TYPE - B AND TEMPORARY ROCK SILT CHECKS TYPE - A AT DRAINAGE OUTLETS.



**37 x 11 x 3  
1.5 inch Skimmer  
with 0.375 inch  
Orifice Diameter  
4 ft. weir  
ID 4.3B**

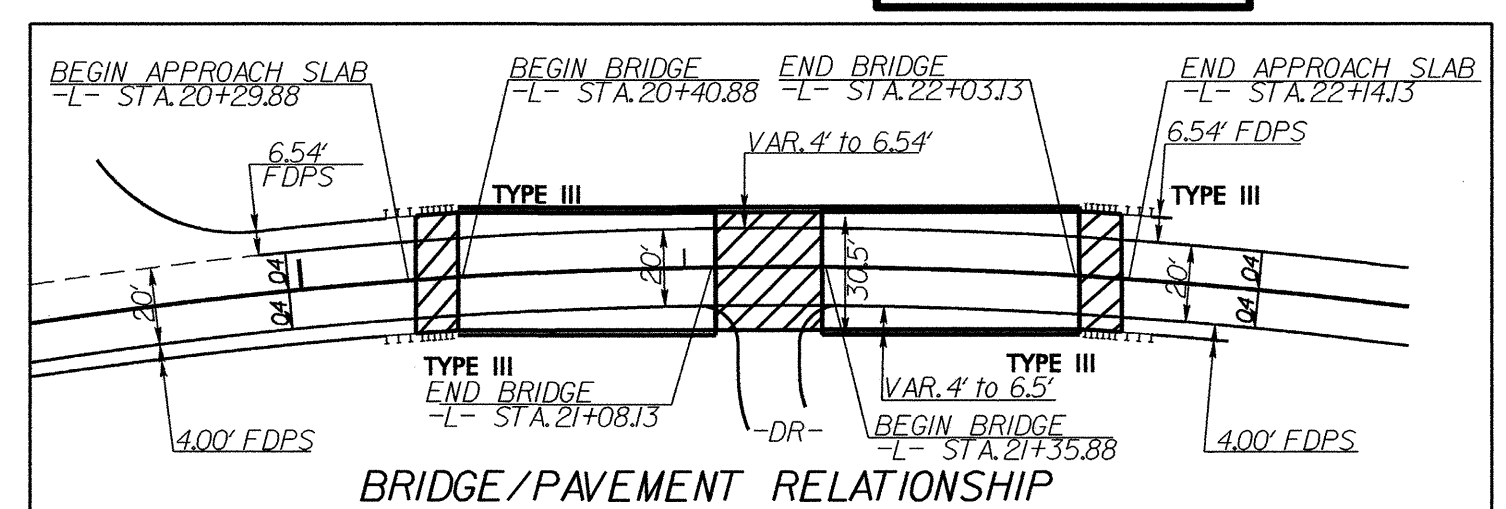
**27 x 10 x 3  
1.5 inch Skimmer  
with 0.25 inch  
Orifice Diameter  
4 ft. weir  
ID 4.4B**

**NOTE:** UTILIZE SPECIAL STILLING BASIN AS STILLING BASIN WHERE APPLICABLE.



**ADT COUNTS (IN 100's)**

SR 1136 OLD TOWN WAY	2011
	2031
SR 1123 LITTLE RIVER ROAD	15
	35



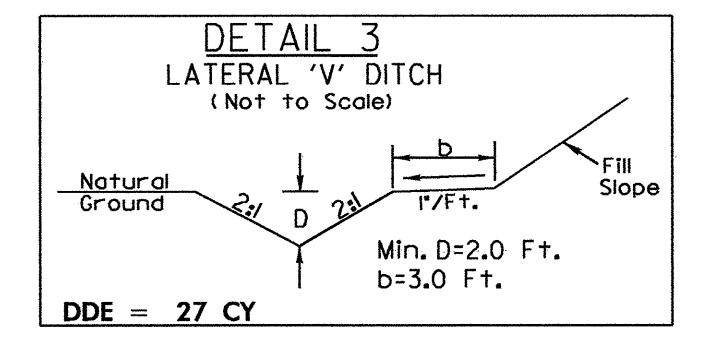
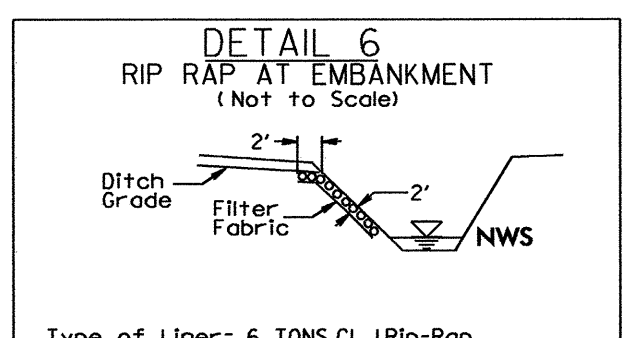
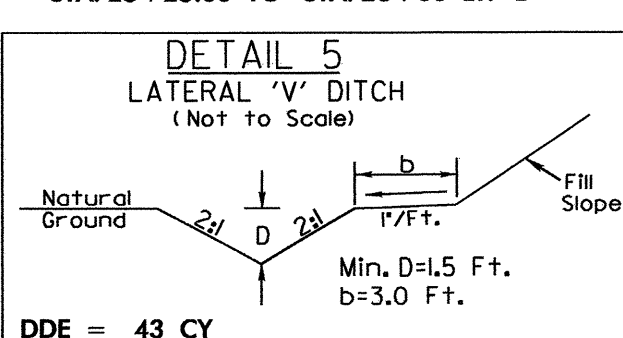
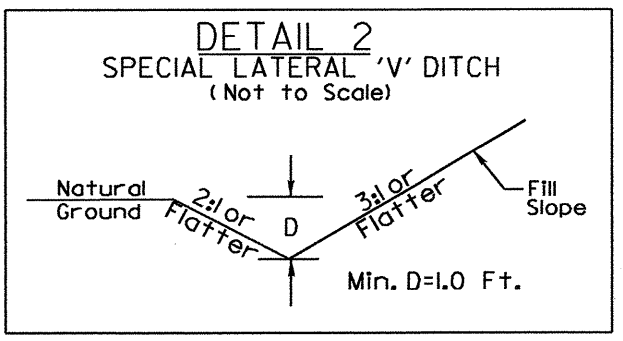
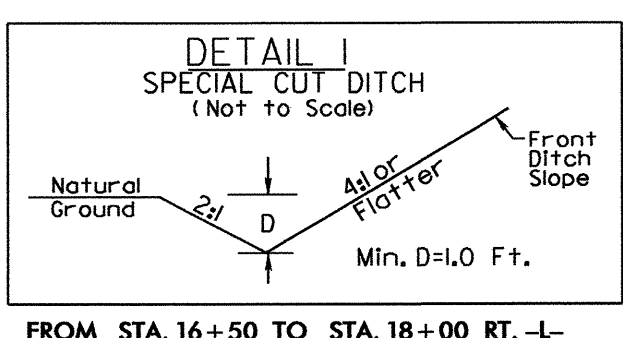
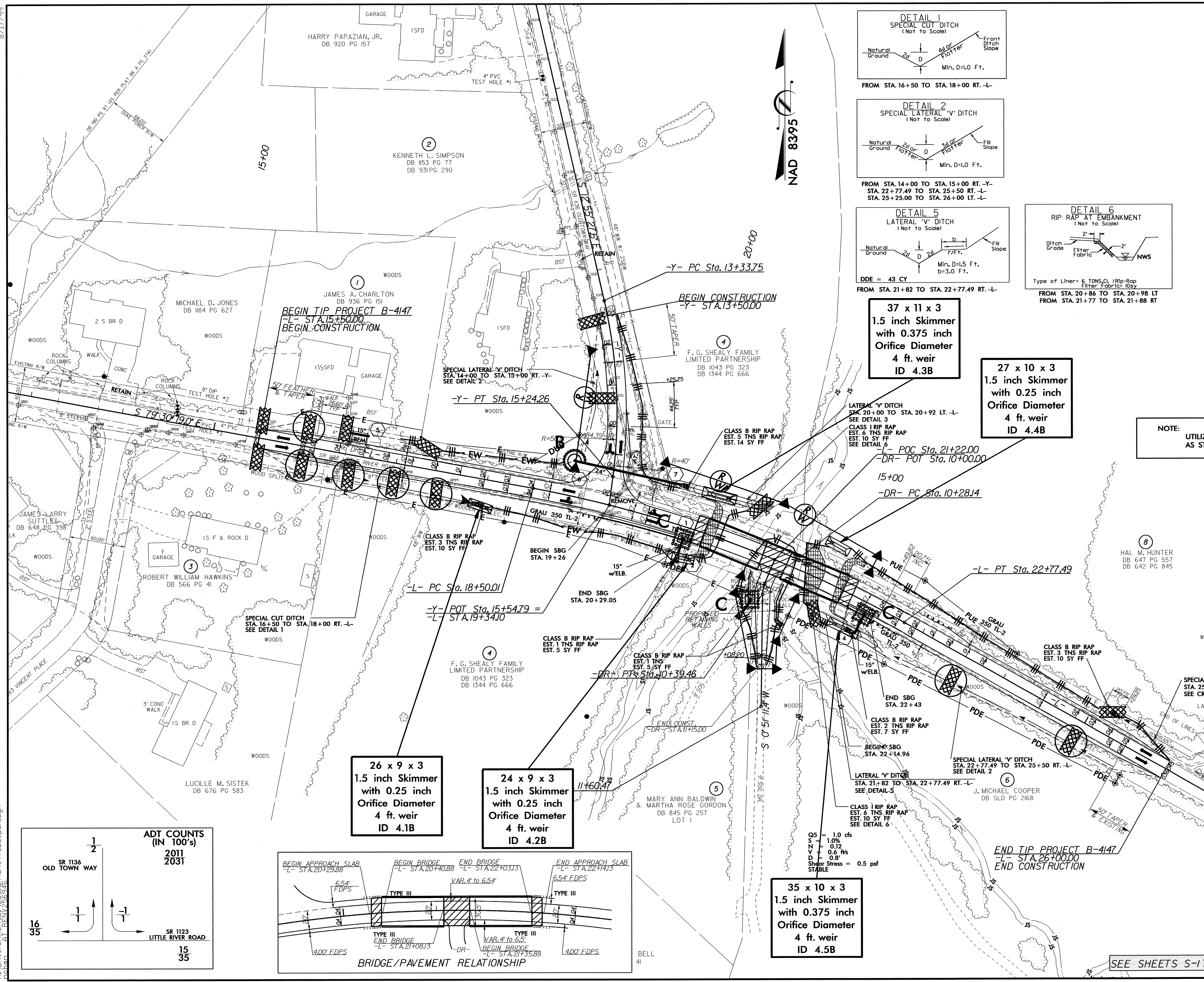
SEE SHEET 2-A FOR LAND LOCKED PROPERTIES  
SEE SHEET 5 FOR -L- PROFILE  
SEE SHEET 5 FOR -Y- PROFILE  
SEE SHEETS S-1 THRU S- FOR STRUCTURE PLANS

02-OCT-2012 14:35 C:\enviro\proj\ec\4147-EC.spc\sh.dgn  
11/17/2012 10:59:56 AM  
11/17/2012 10:59:56 AM



8/17/99

PROJECT REFERENCE NO.	SHEET NO.
B-4147	EC-5/CONST.4
RW SHEET NO.	
ROADWAY DESIGN ENGINEER	HYDRAULICS ENGINEER



**37 x 11 x 3**  
1.5 inch Skimmer  
with 0.375 inch  
Orifice Diameter  
4 ft. weir  
ID 4.3B

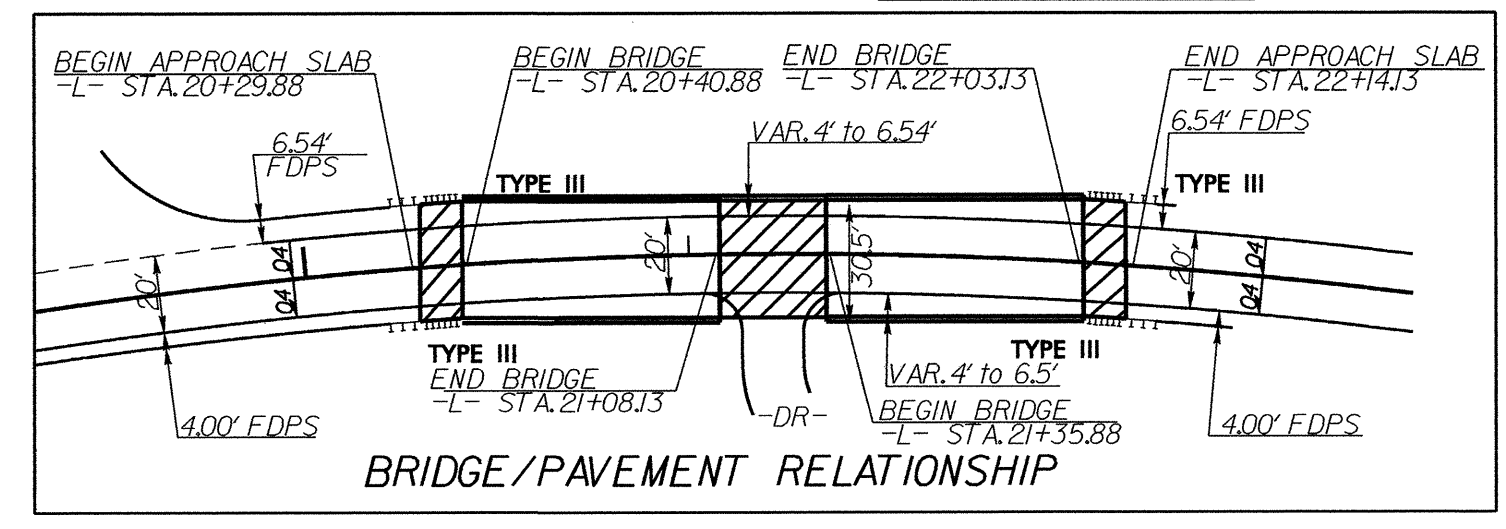
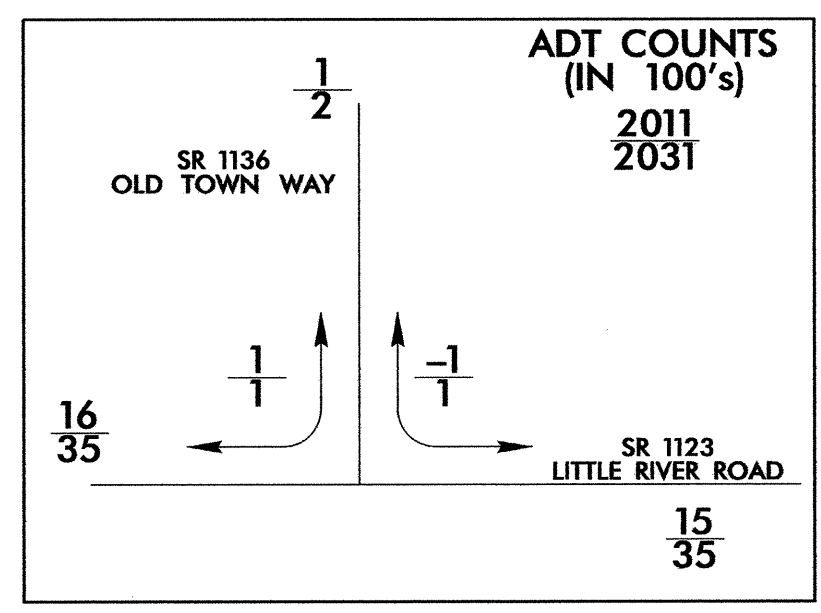
**27 x 10 x 3**  
1.5 inch Skimmer  
with 0.25 inch  
Orifice Diameter  
4 ft. weir  
ID 4.4B

NOTE:  
UTILIZE SPECIAL STILLING BASIN  
AS STILLING BASIN WHERE APPLICABLE.

**26 x 9 x 3**  
1.5 inch Skimmer  
with 0.25 inch  
Orifice Diameter  
4 ft. weir  
ID 4.1B

**24 x 9 x 3**  
1.5 inch Skimmer  
with 0.25 inch  
Orifice Diameter  
4 ft. weir  
ID 4.2B

**35 x 10 x 3**  
1.5 inch Skimmer  
with 0.375 inch  
Orifice Diameter  
4 ft. weir  
ID 4.5B



SEE SHEET 2-A FOR LAND  
LOCKED PROPERTIES  
SEE SHEET 5 FOR -L- PROFILE  
SEE SHEET 5 FOR -Y- PROFILE  
SEE SHEETS S-1 THRU S- FOR STRUCTURE PLANS

02-OCT-2012 14:36  
C:\Environment\Projects\B-4147-EC-psh.dgn  
BELL 41