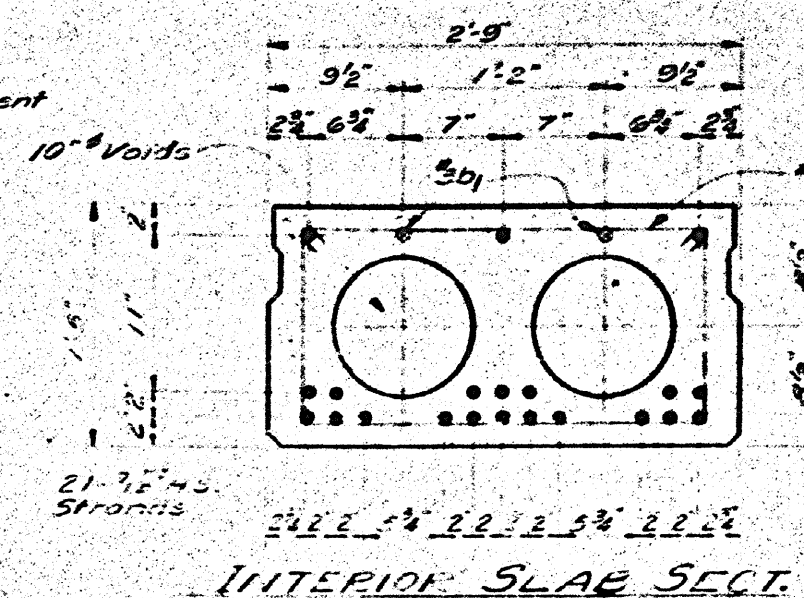
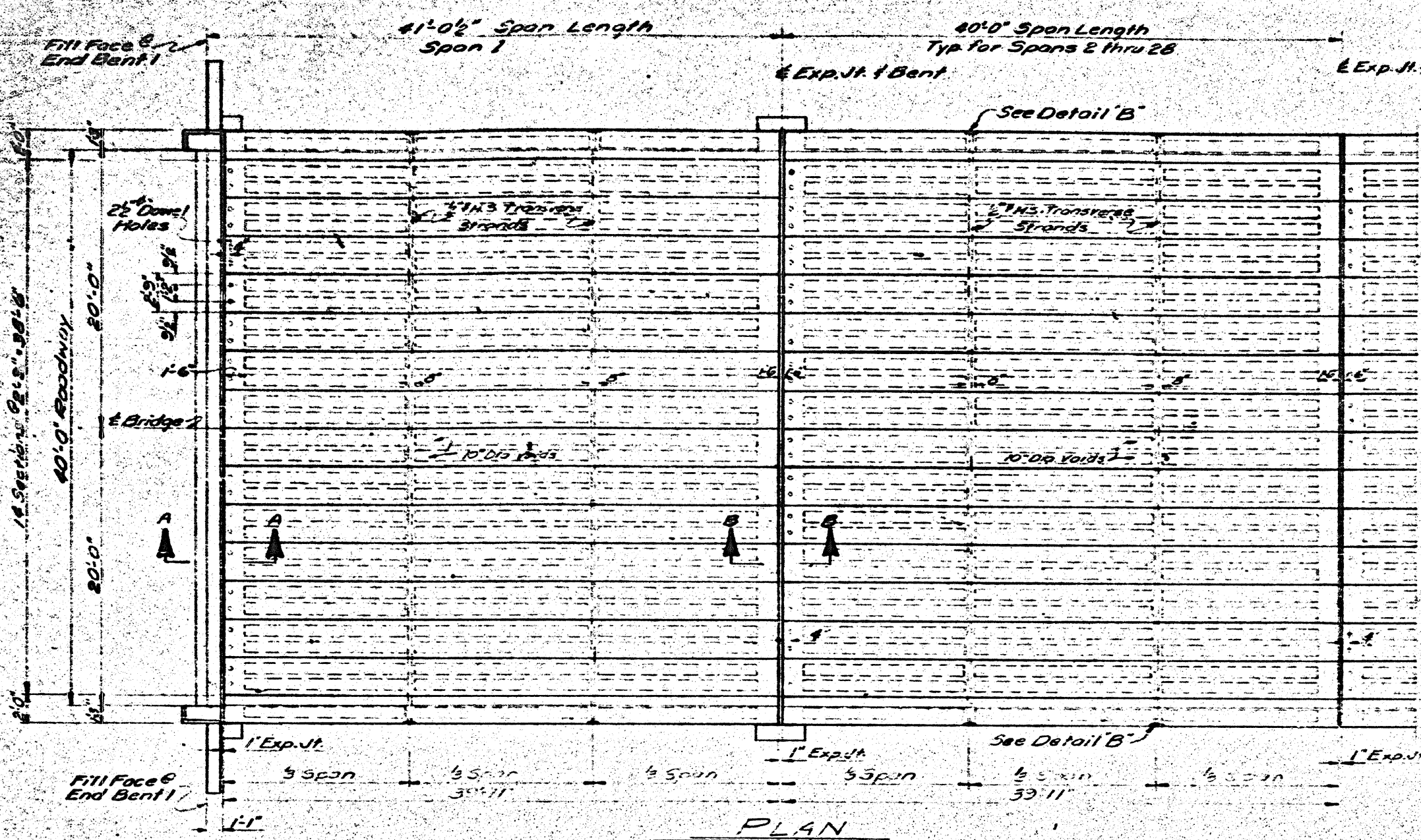
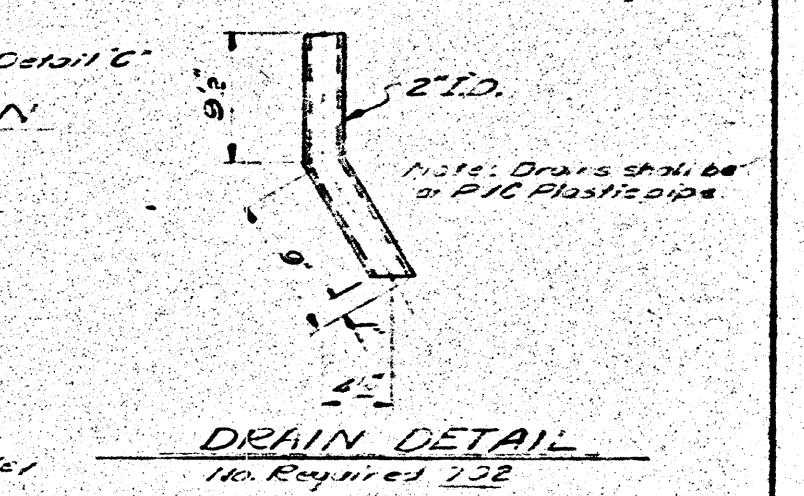
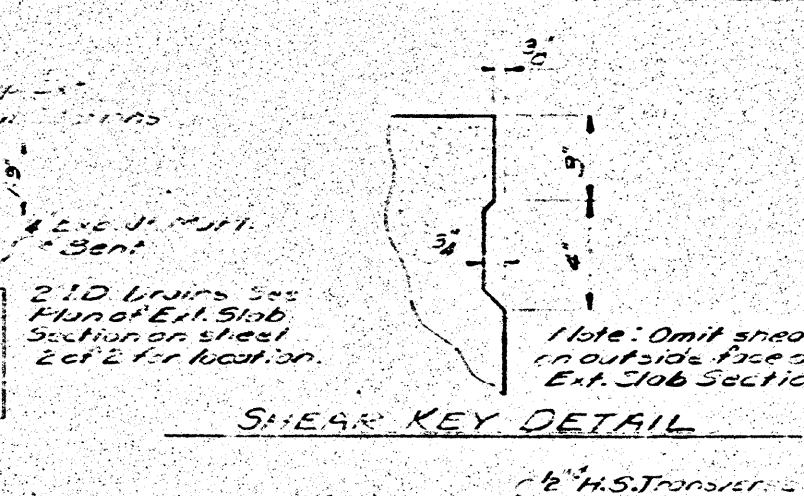
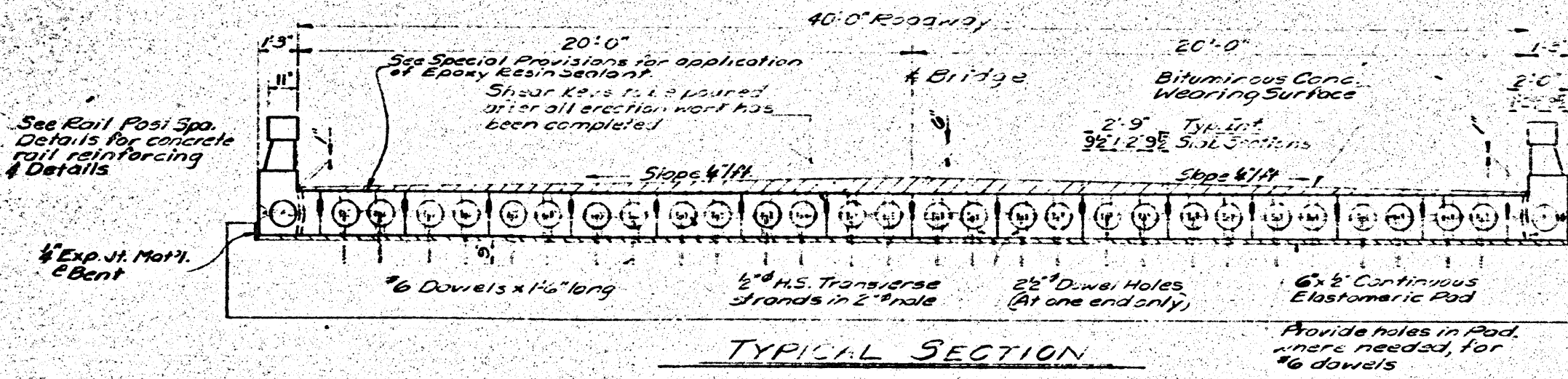
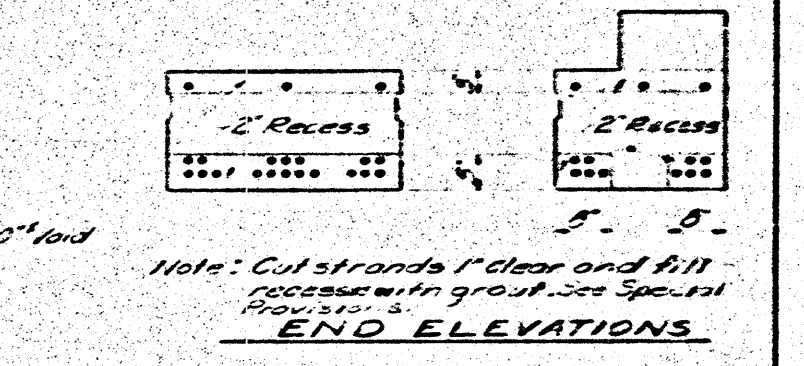
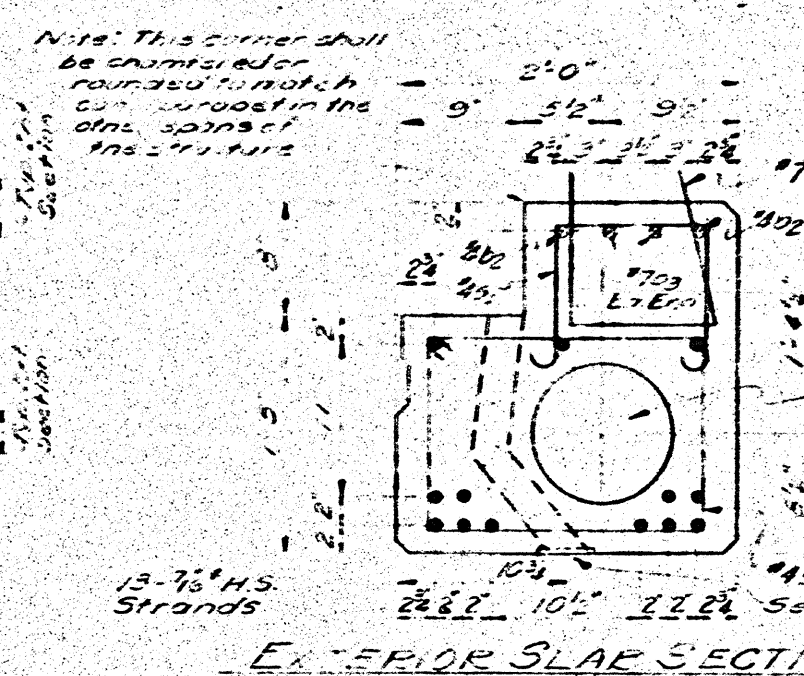


DATE	BY	REVISION
10/1/72	AC	10/1/72



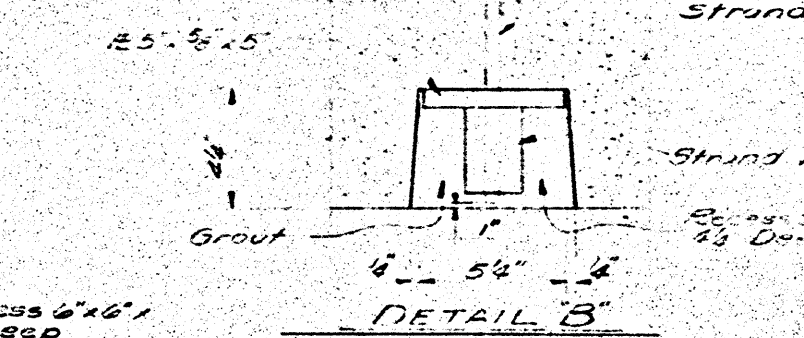
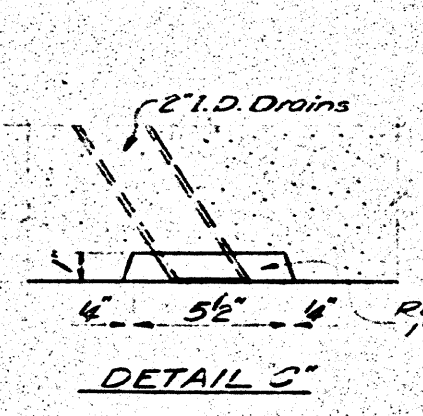
- NOTES:**
- ASSUMED LIVE LOAD: ESD-1 - 1972
  - ALL PRESTRESSING STRANDS SHALL MEET THE REQUIREMENTS OF A.S.T.M. - A416.
  - ALL PRESTRESSING STRANDS SHALL BE 7-WIRE STRANDS RATED HIGH STRENGTH CABLES IN ACCORDANCE WITH THE SPECIFICATIONS.
- | SIZE  | TYPE | AREA   | ULTIMATE STRENGTH | MINIMUM STRENGTH |
|-------|------|--------|-------------------|------------------|
| 7/16" | E.S. | 0.1153 | 31,000 P.S.I.     | 21,700 P.S.I.    |
| 1/2"  | E.S. | 0.1531 | 42,000 P.S.I.     | 28,500 P.S.I.    |
- CONCRETE: AT TIME OF TENSILING LOAD, THE CILINDER STRENGTH OF CONCRETE SHALL BE 4,000 P.S.I. MIN. THE 28 DAY CILINDER STRENGTH SHALL BE 5,000 P.S.I. MIN.
  - ALL REINFORCING STEEL SHALL BE INCLUDED IN THE CONTRACT UNIT PRICE FOR PRESTRESSED CORED SLABS.
  - RECESS FOR TRANSVERSE STRANDS TO BE GRouted AFTER FINISHING OF STRANDS. 2" x 6" LOGEL HOLES AT END OF SECTION TO BE GRouted. SPREAD KEY BETWEEN SLAB UNITS TO BE GRouted. SEE SPECIAL PROVISIONS FOR DETAIL.
  - Neoprene in 2" x 6" Continuous Elastomeric Pad shall have a Grade 70 durometer hardness. See Special Provisions.



	In. Sect. 2 & 3	In. Sect. 4 & 5
Comber (Slab alone in place)	3 1/2"	6"
Deflection due to Superimposed D.L.	6"	0"
Final deflection	4"	6"

Note: Span 23 has a down vertical curve ordinate of 1/8". Spans 24 thru 28 have a down vertical curve ordinate of 1/8".

Note: The contractor may be permitted to use two 1"x1"x3/4" Styro recess plugs on the end of each prestressing strand in the cored Slab Sections, provided the recesses are sand blasted prior to applying the epoxy grout in order to remove any residue from the melted plugs or burned prestressing strand and to assure a good bond between the epoxy grout and concrete. Approval is granted with the understanding there will be no additional cost to the Division of Highways. See letter from Mr. W.E. Latham dated Oct. 9, 1973.



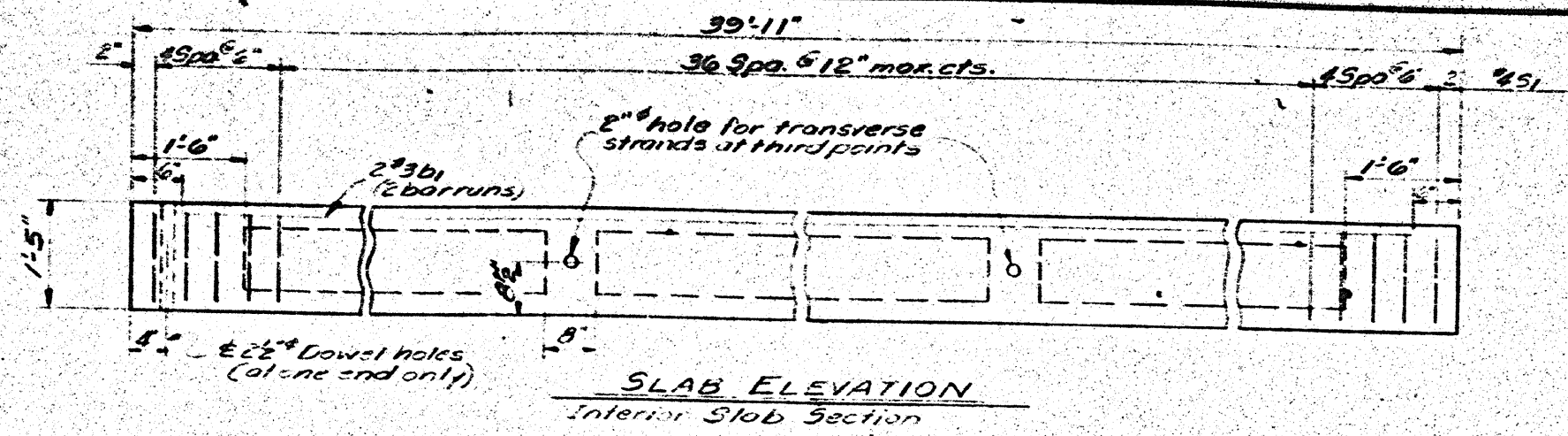
PROJECT No. 81313502  
 BRUNSWICK COUNTY  
 STATION 139+16.00  
 Sheet 1 of 2

STATE OF NORTH CAROLINA  
**STATE HIGHWAY COMMISSION**  
 BALDWIN

**SUPERSTRUCTURE  
 PRESTRESSED CORED  
 SLAB - SPANS 1 thru 28**

JULY 1972

REVISIONS					
NO.	BY	DATE	NO.	BY	DATE
1					
2					



**BILL OF MATERIAL FOR 1 EXTERIOR SLAB SECTION (56 REQUIRED)**

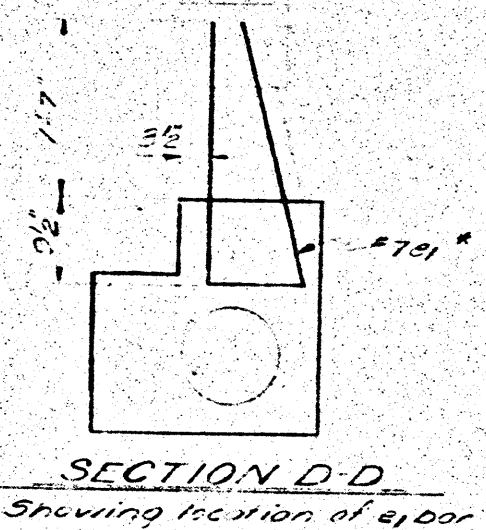
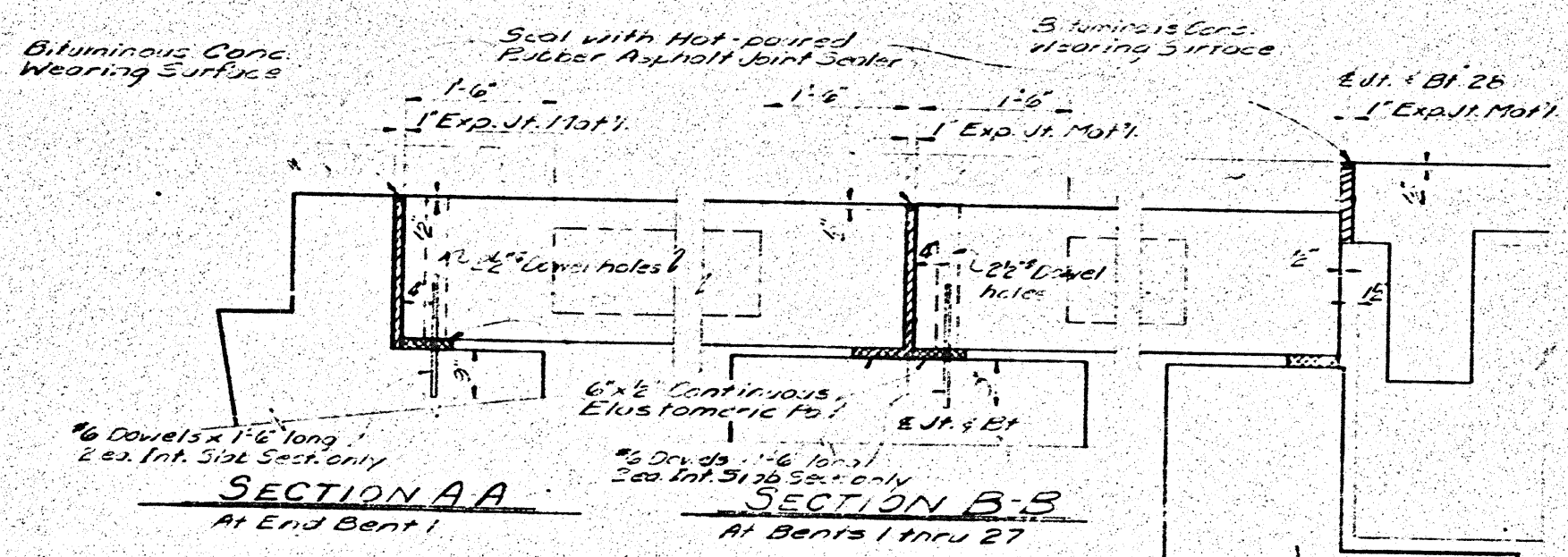
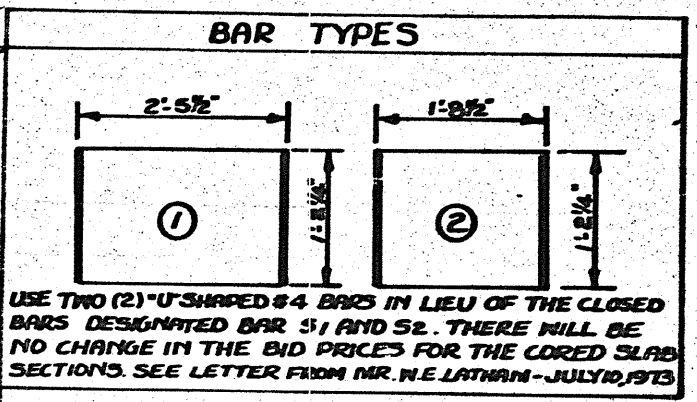
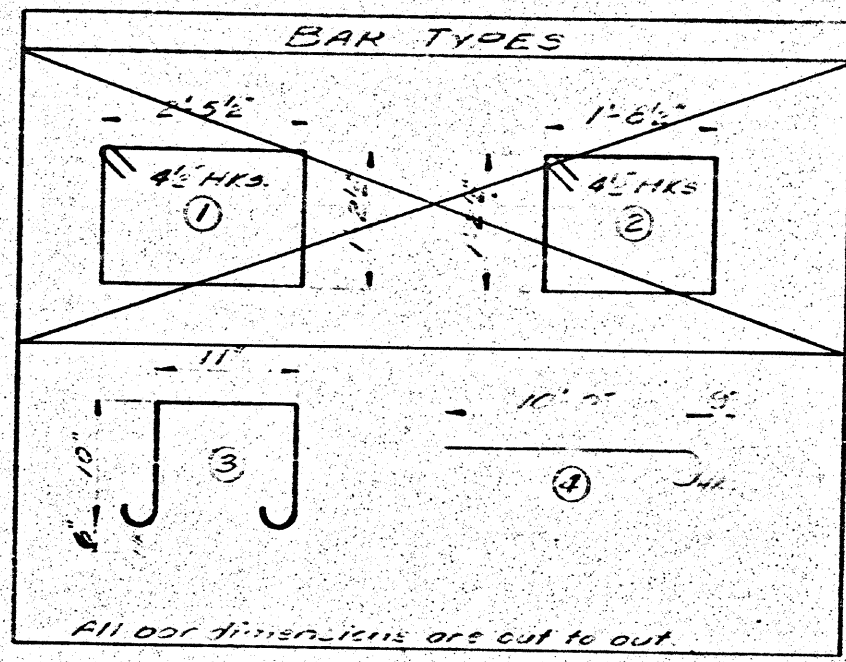
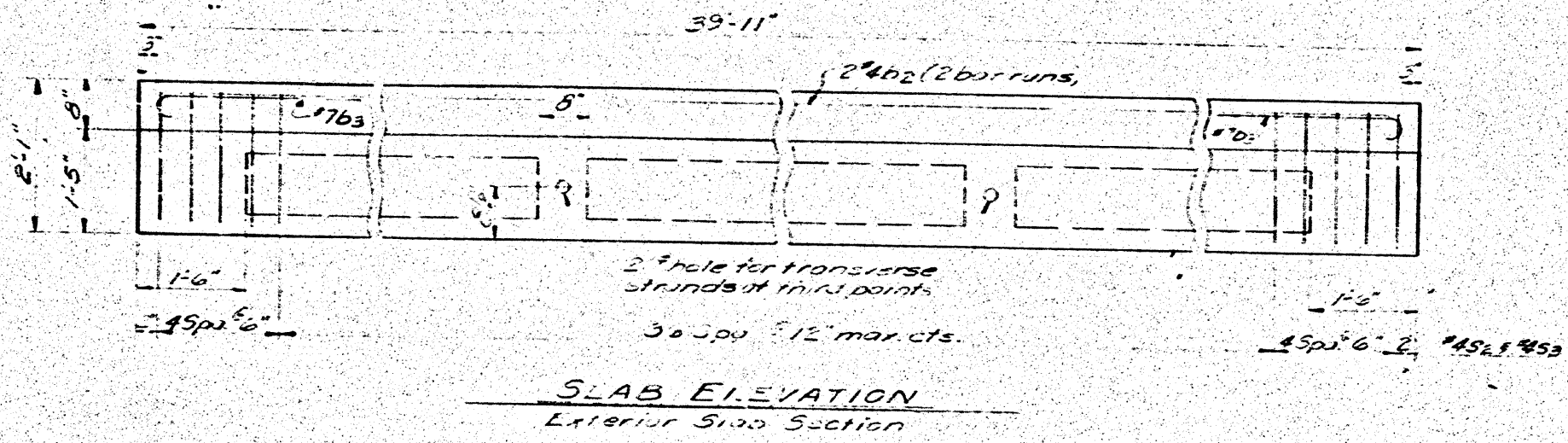
Bar No.	Size	Type	Length	Weight
B2	#4	Str.	20.4	54
B3	#7	4	10.9	55
B2	#4	2	6.7	195
B3	#4	3	3.7	105

Reinforcing Steel - Lbs. 43  
Concrete - Cu. Yds. 4.7

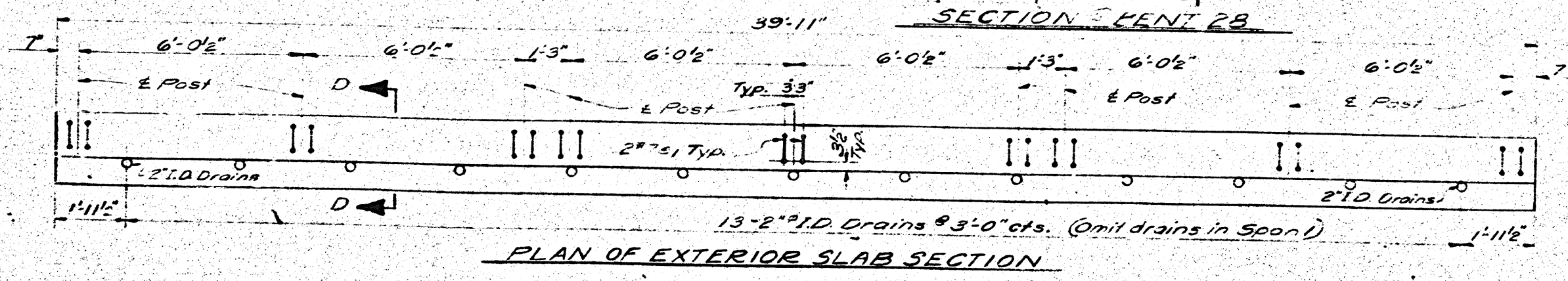
**BILL OF MATERIAL FOR 1 INTERIOR SLAB SECTION (392 REQUIRED)**

Bar No.	Size	Type	Length	Weight
D1	#3	Str.	20.4	53
S1	#4	1	0.1	243

Reinforcing Steel - Lbs. 273  
Concrete - Cu. Yds. 4.3



\* See Superstructure Concrete Rail for details of #1 bar.



PROJECT No. 8.1313502  
BRUNSWICK COUNTY  
STATION 159+16.00  
Sheet 2 of 2

STATE OF NORTH CAROLINA  
**STATE HIGHWAY COMMISSION**  
RALEIGH  
**SUPERSTRUCTURE PRESTRESSED CORED SLAB - SPANS 1 thru 28**  
JULY 1972

REVISIONS					
NO.	BY	DATE	NO.	BY	DATE
1			2		
3			4		