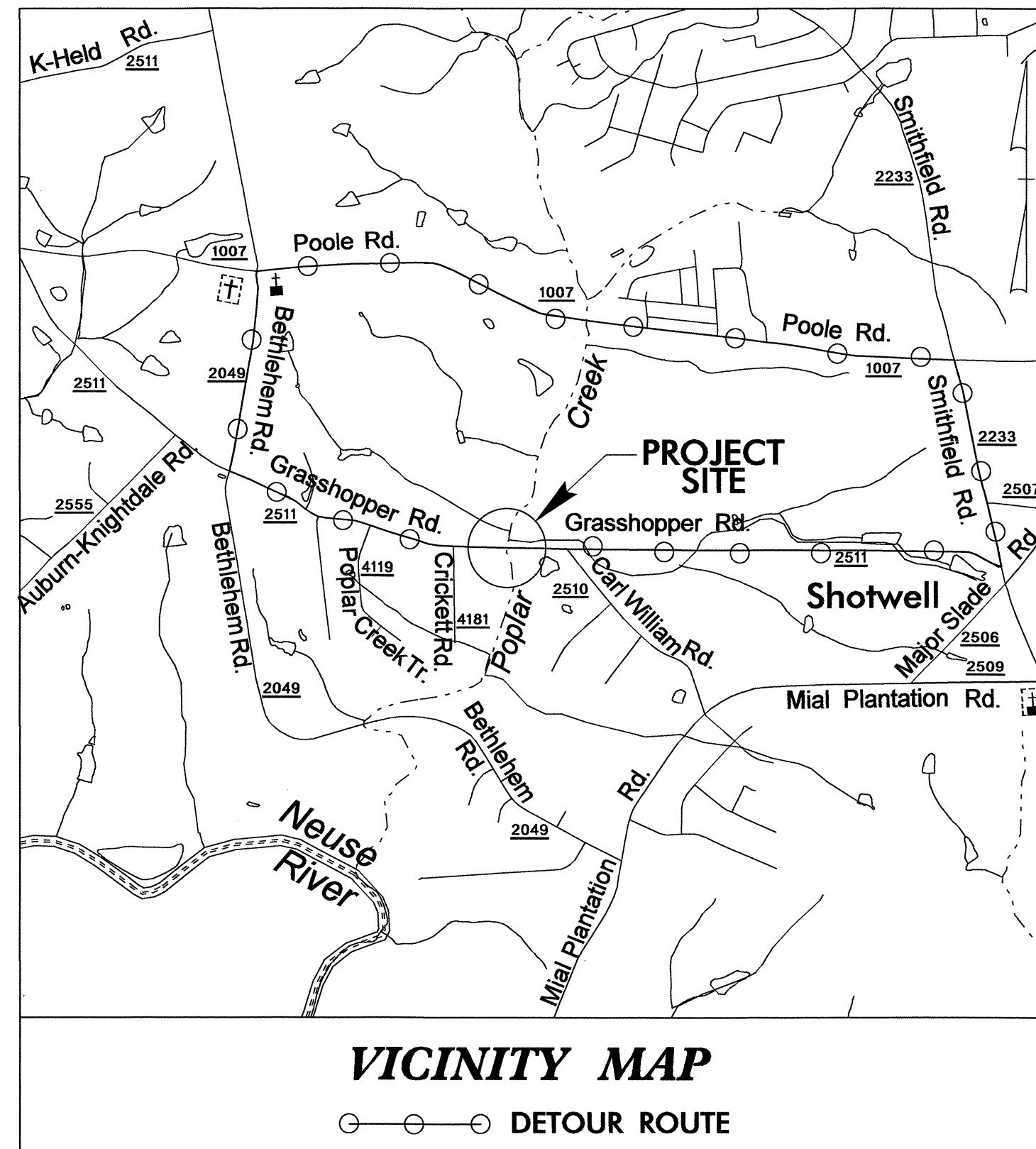
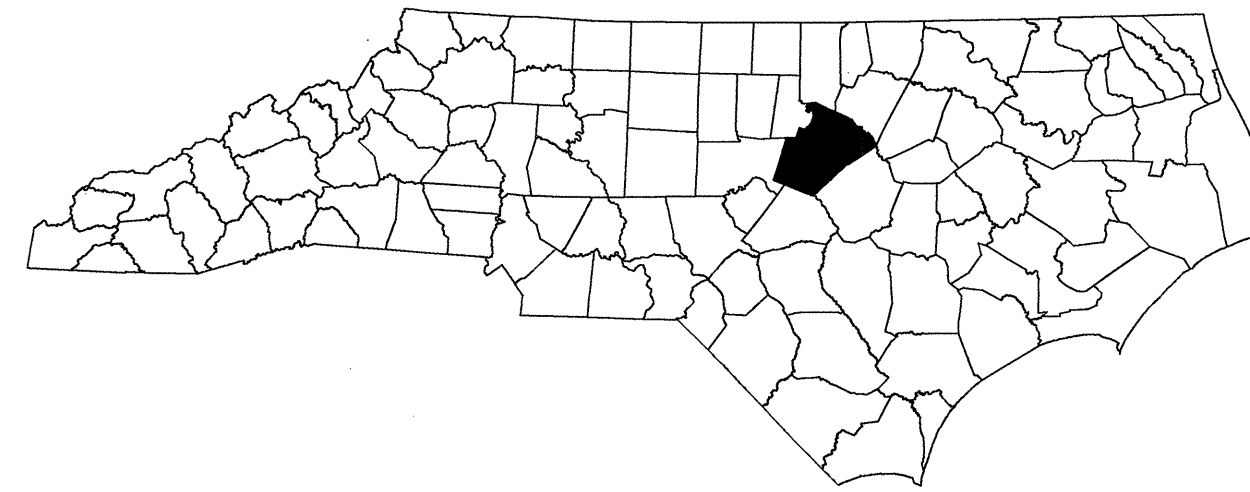


STATE OF NORTH CAROLINA
DIVISION OF HIGHWAYS

TRANSPORTATION MANAGEMENT PLAN

WAKE COUNTY



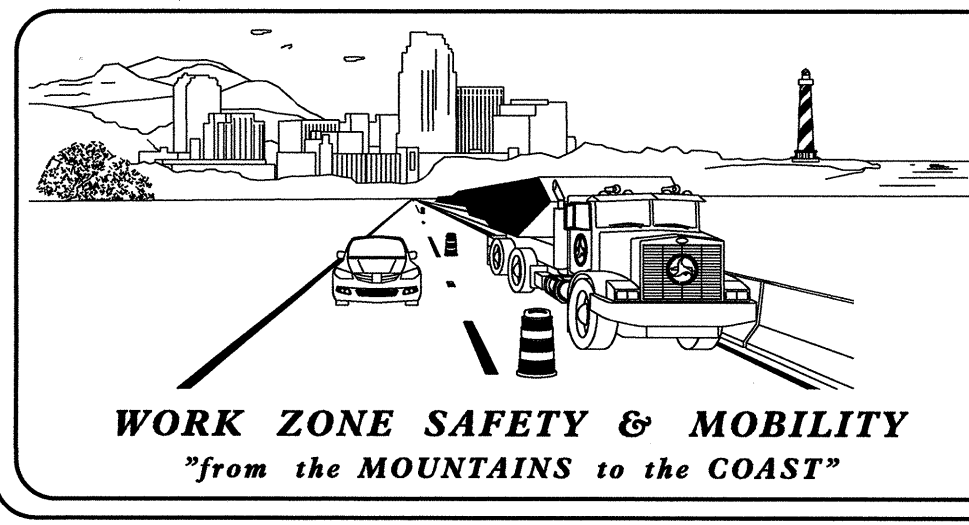
INDEX OF SHEETS

SHEET NO.	TITLE
TMP-1	TITLE SHEET, AND INDEX OF SHEETS
TMP-1A	LIST OF APPLICABLE ROADWAY STANDARD DRAWINGS, LEGEND, AND TEMPORARY PAVEMENT MARKING
TMP-1B	TRANSPORTATION OPERATIONS PLAN: (MANAGEMENT STRATEGIES, GENERAL NOTES AND LOCAL NOTES) AND PHASING
TMP-2	OFFSITE DETOUR AND BARRICADE PLACEMENT
SD -1	SPECIAL SIGN DESIGN

SHEET NO.
TMP-1
B-4832

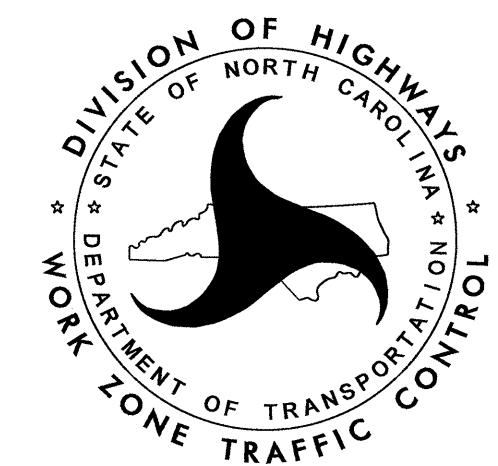
TIP PROJECT:

03-JUL-2012 08:40 \\dot\dfs\p0101\Proj\TIP\Projects-B\B4832\TrafficControl\TCP\B4832_TC_TMP_01.dgn shassan AT TE248373



N.C.D.O.T. WORK ZONE TRAFFIC CONTROL
1561 MAIL SERVICE CENTER (MSC) RALEIGH, NC 27699-1561
750 N. GREENFIELD PARKWAY, GARNER, NC 27529 (DELIVERY)
PHONE: (919) 773-2800 FAX: (919) 771-2745

J. S. BOURNE, P.E. STATE TRAFFIC MANAGEMENT ENGINEER
J. ISHAK, P.E. TRAFFIC CONTROL PROJECT ENGINEER
TRAFFIC CONTROL PROJECT DESIGN ENGINEER
S. HASSAN TRAFFIC CONTROL DESIGN ENGINEER



APPROVED: _____
DATE: _____

SEAL

ROADWAY STANDARD DRAWINGS

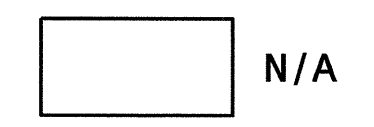
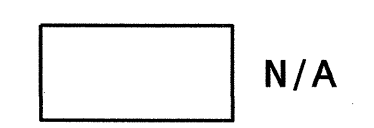
THE FOLLOWING ROADWAY STANDARDS AS SHOWN IN "ROADWAY STANDARD DRAWINGS" - PROJECT SERVICES UNIT - N.C. DEPARTMENT OF TRANSPORTATION - RALEIGH, N.C., DATED JANUARY 2012 ARE APPLICABLE TO THIS PROJECT AND BY REFERENCE HEREBY ARE CONSIDERED A PART OF THESE PLANS:

STD. NO.	TITLE
1101.03	TEMPORARY ROAD CLOSURES
1101.11	TRAFFIC CONTROL DESIGN TABLES
1110.01	STATIONARY WORK ZONE SIGNS
1145.01	BARRICADES

LEGEND

GENERAL

- DIRECTION OF TRAFFIC FLOW
- DIRECTION OF PEDESTRIAN TRAFFIC FLOW
- EXIST. PVMT.
- NORTH ARROW
- PROPOSED PVMT.



TEMPORARY PAVEMENT MARKING

N/A

TRAFFIC CONTROL DEVICES

- BARRICADE (TYPE III)
- CONE
- DRUM SKINNY DRUM TUBULAR MARKER
- TEMPORARY CRASH CUSHION
- FLASHING ARROW BOARD
- FLAGGER
- LAW ENFORCEMENT
- TRUCK MOUNTED ATTENUATOR (TMA)
- CHANGEABLE MESSAGE SIGN

TEMPORARY SIGNING

- PORTABLE SIGN
- STATIONARY SIGN
- STATIONARY OR PORTABLE SIGN

SIGNALS

- EXISTING
- PROPOSED
- TEMPORARY

PAVEMENT MARKINGS

- EXISTING LINES
- TEMPORARY LINES

PAVEMENT MARKERS

- CRYSTAL/CRYSTAL
- CRYSTAL/RED
- YELLOW/YELLOW

PAVEMENT MARKING SYMBOLS

- PAVEMENT MARKING SYMBOLS

03-JUL-2012 08:40 \\dot\dfsroot\0\Proj\TIP\Projects-B\4832\TrafficControl\TCP\B4832_TC_TMP_OIA.dgn shassan AT 12248373

APPROVED:	DATE: 7/3/2012		ROADWAY STANDARD DRAWINGS & LEGEND

MANAGEMENT STRATEGIES

THE FOLLOWING LISTED STRATEGIES DERIVE FROM DETAILED DESIGN LEVEL ASSESSMENTS OF THE WORK ZONE IMPACTS CONDUCTED DURING THE DEVELOPMENTAL STAGES OF THIS TRANSPORTATION MANAGEMENT PLAN (TMP).

RECOMMEND MANAGEMENT STRATEGIES RELATIVE TO THIS TMP ARE AS FOLLOWS:

- FULL ROAD CLOSURE

TRAFFIC TO BE MAINTAINED ON THE FOLLOWING OFFSITE DETOUR ROUTE THROUGHOUT THE DURATION OF THIS PROJECT.

SR 2049 (BETHLEHEM RD.), SR 1007 (POOLE RD.), AND SR 2233 (SMITHFIELD RD.)

PHASING

STEP 1: USING ROADWAY STANDARD DRAWING 1101.03, SHEET 1 OF 9; SHEET TMP-2, AND SHEET SD-1, INSTALL DETOUR SIGNS. PLACE TYPE III BARRICADES TO CLOSE SR 2511 (GRASSHOPPER RD.) TO THROUGH TRAFFIC, AND DETOUR TRAFFIC ONTO PROPOSED DETOUR ROUTE.

STEP 2: AWAY FROM TRAFFIC, COMPLETE THE FOLLOWING:

- 1) REMOVE EXISTING STRUCTURE NO. 230 AND CONSTRUCT PROPOSED STRUCTURE. SEE ROADWAY AND STRUCTURE PLANS.
- 2) CONSTRUCT PROPOSED ROADWAY UP TO AND INCLUDING THE FINAL SURFACE LAYER FROM STA. 15+72 +/- TO STA. 16+66 +/- . SEE ROADWAY PLANS.
- 3) PLACE FINAL PAVEMENT MARKINGS. SEE PAVEMENT MARKING PLANS.

STEP 3: REMOVE ALL TRAFFIC CONTROL DEVICES AND OPEN SR 2511 (GRASSHOPPER RD.) TO FINAL TRAFFIC PATTERN.

GENERAL NOTES / LOCAL NOTES

CHANGES MAY BE REQUIRED WHEN PHYSICAL DIMENSIONS IN THE DETAIL DRAWINGS, STANDARD DETAILS, AND ROADWAY DETAILS ARE NOT ATTAINABLE TO MEET FIELD CONDITIONS OR RESULT IN DUPLICATE OR UNDESIRED OVERLAPPING OF DEVICES. MODIFICATION MAY INCLUDE: MOVING, SUPPLEMENTING, COVERING, OR REMOVAL OF DEVICES AS DIRECTED BY THE ENGINEER.

THE FOLLOWING GENERAL NOTES APPLY AT ALL TIMES FOR THE DURATION OF THE CONSTRUCTION PROJECT EXCEPT WHEN OTHERWISE NOTED IN THE PLAN OR DIRECTED BY THE ENGINEER.

TRAFFIC PATTERN ALTERATIONS

- A) NOTIFY THE ENGINEER THIRTY-FIVE (35) CALENDAR DAYS PRIOR TO ANY TRAFFIC PATTERN ALTERATION.

SIGNING

- B) INSTALL ADVANCE WORK ZONE WARNING SIGNS WHEN WORK IS WITHIN 40 FT FROM THE EDGE OF TRAVEL LANE AND NO MORE THAN THREE (3) DAYS PRIOR TO THE BEGINNING OF CONSTRUCTION.
- C) PROVIDE SIGNING AND DEVICES REQUIRED TO CLOSE THE ROAD ACCORDING TO THE ROADWAY STANDARD DRAWINGS AND TRAFFIC CONTROL PLANS.

PROVIDE SIGNING REQUIRED FOR THE OFF-SITE DETOUR ROUTE AS SHOWN IN THE TRAFFIC CONTROL PLANS.

- D) COVER OR REMOVE ALL SIGNS AND DEVICES REQUIRED TO CLOSE THE ROAD WHEN ROAD CLOSURE IS NOT IN OPERATION.

COVER OR REMOVE ALL SIGNS REQUIRED FOR THE OFF-SITE DETOUR WHEN THE DETOUR IS NOT IN OPERATION.

- E) ENSURE ALL NECESSARY SIGNING IS IN PLACE PRIOR TO ALTERING ANY TRAFFIC PATTERN.

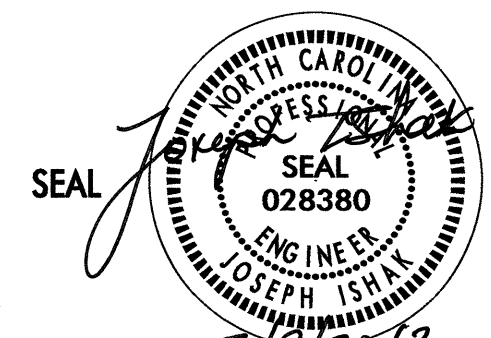
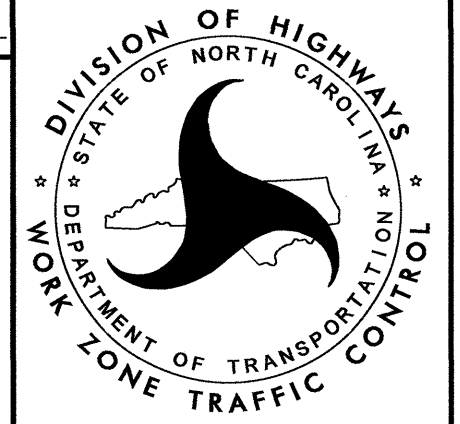
TRAFFIC CONTROL DEVICES

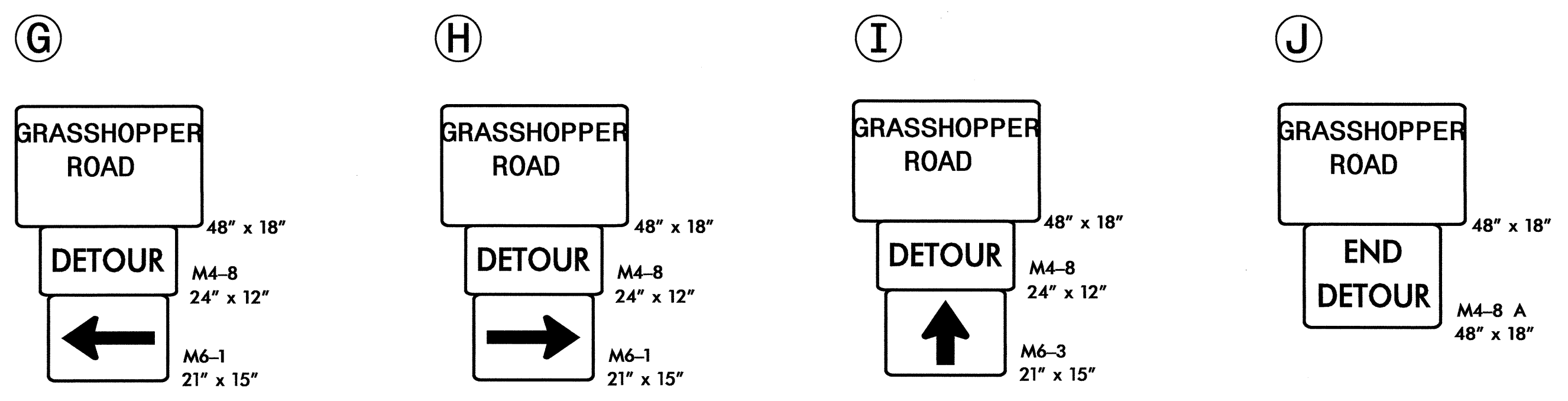
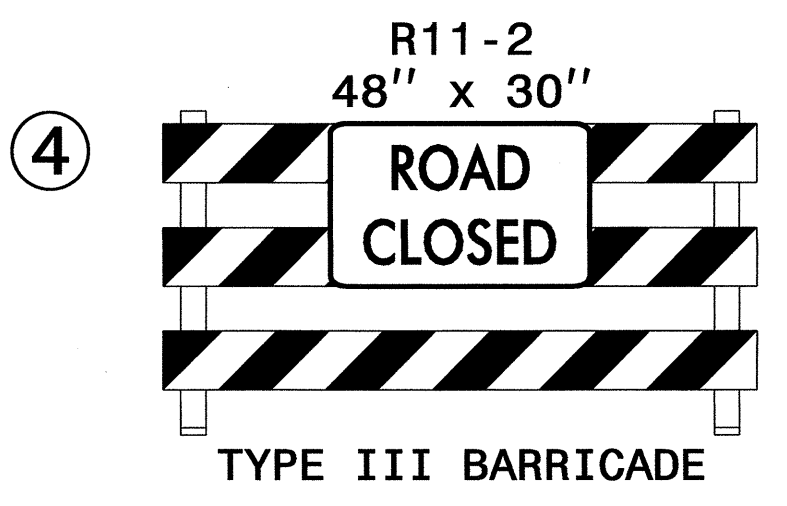
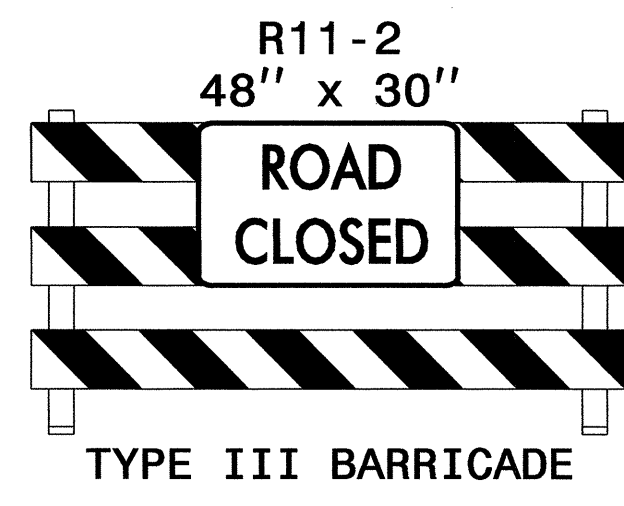
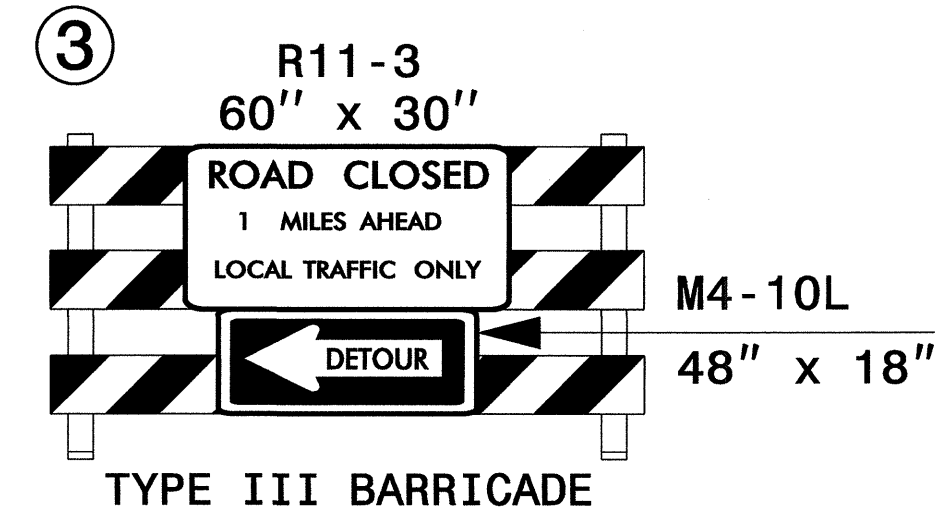
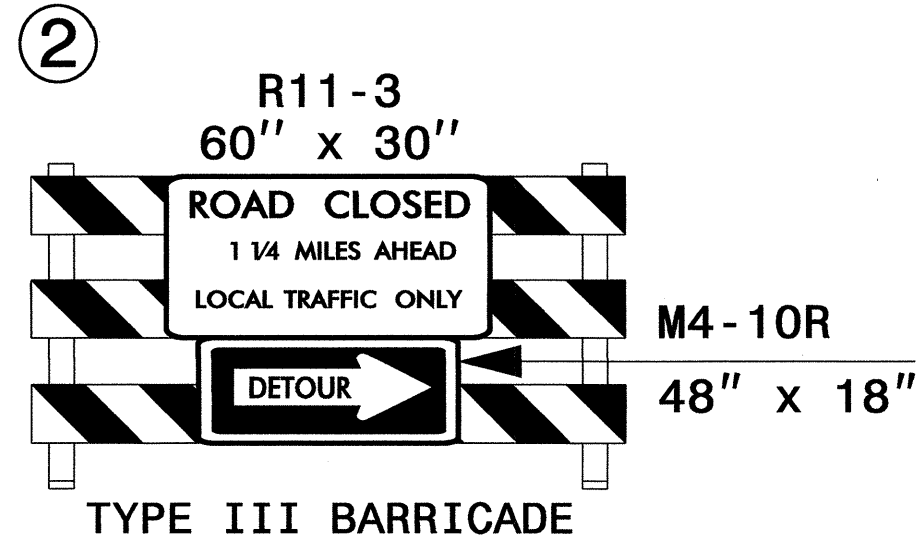
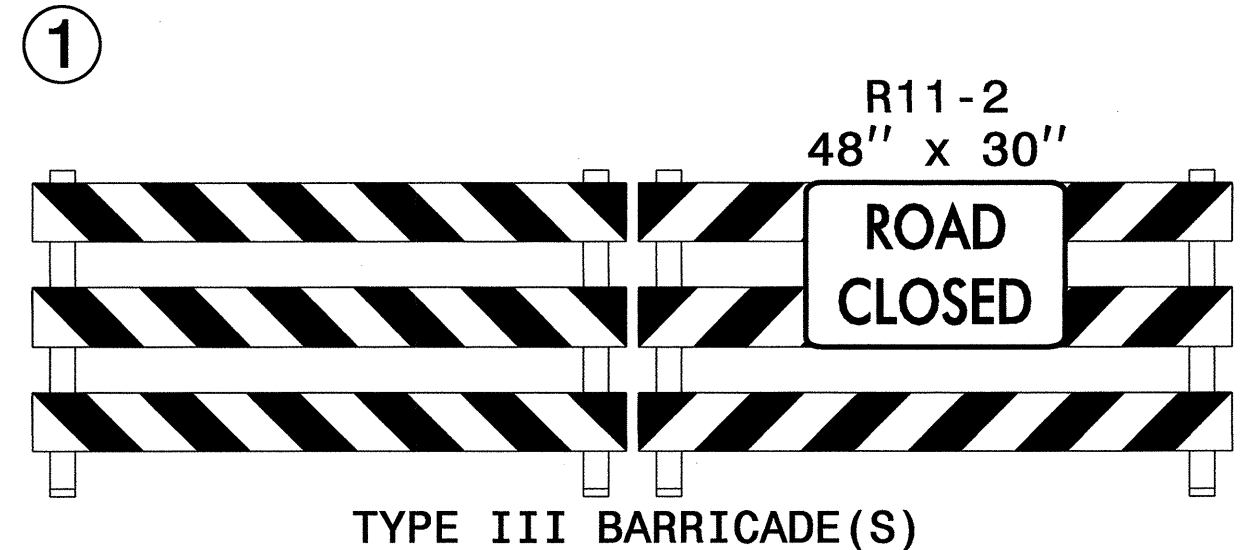
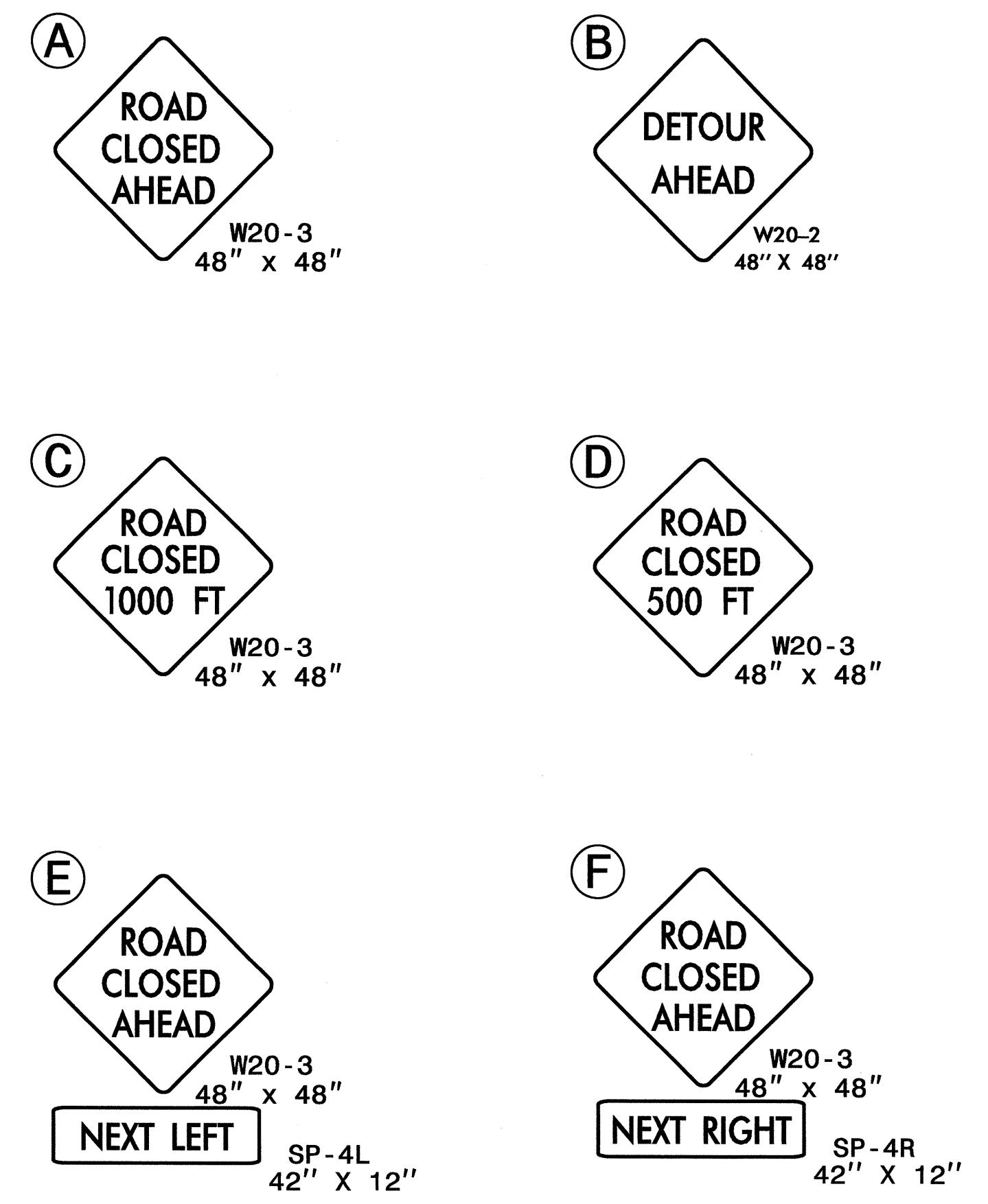
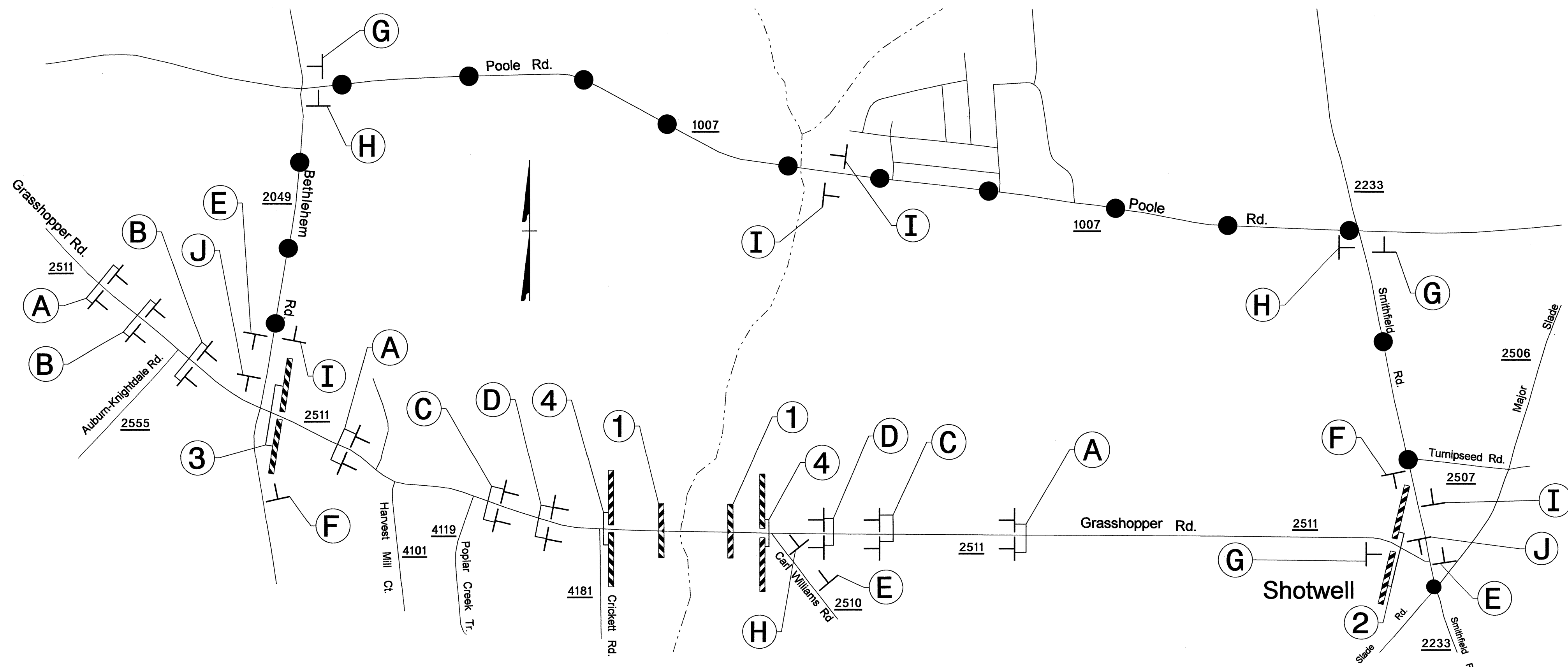
- F) PLACE TYPE III BARRICADES, WITH "ROAD CLOSED" SIGN R11-2 ATTACHED, OF SUFFICIENT LENGTH TO CLOSE ENTIRE ROADWAY.

PAVEMENT MARKINGS AND MARKERS

- G) INSTALL PAVEMENT MARKINGS AND PAVEMENT MARKERS ON THE FINAL SURFACE AS SHOWN IN THE PAVEMENT MARKING PLAN.
- H) TIE PROPOSED PAVEMENT MARKING LINES TO EXISTING PAVEMENT MARKING LINES.

03-JUL-2012 08:40 \\dot\dfs\c010\Proj\TIP\Projects-B\B4832\TrafficControl\TCP\B4832_TC_TMP_01B.dgn shanson AT TE248373

APPROVED: _____	DATE: _____			<h1 style="margin: 0;">TRANSPORTATION OPERATIONS PLAN</h1>
-----------------	-------------	---	---	--



NOTE:

- PLACE TYPE III BARRICADE '1' AT STATIONS 14+30 AND 17+75. PLACE TYPE III BARRICADES '4' AT STATIONS 10+00 AND 21+00.
- REFER TO SHEET SD-1 FOR SIGN DESIGN.
- REFER TO STANDARD DRAWING RSD 1101.03 SHEET 1 OF 9 FOR SIGNING DISTANCE.

OFFSITE DETOUR ROUTE = ● — ● — ●

APPROVED: _____ DATE: _____

OFFSITE DETOUR AND BARRICADE PLACEMENT

03-JUL-2012 08:46 \\dot\dfsroot\01\Proj\TipProjects-B\B4832\TrafficControl\B4832_TC_TMP_02.dgn shassan AT T248373