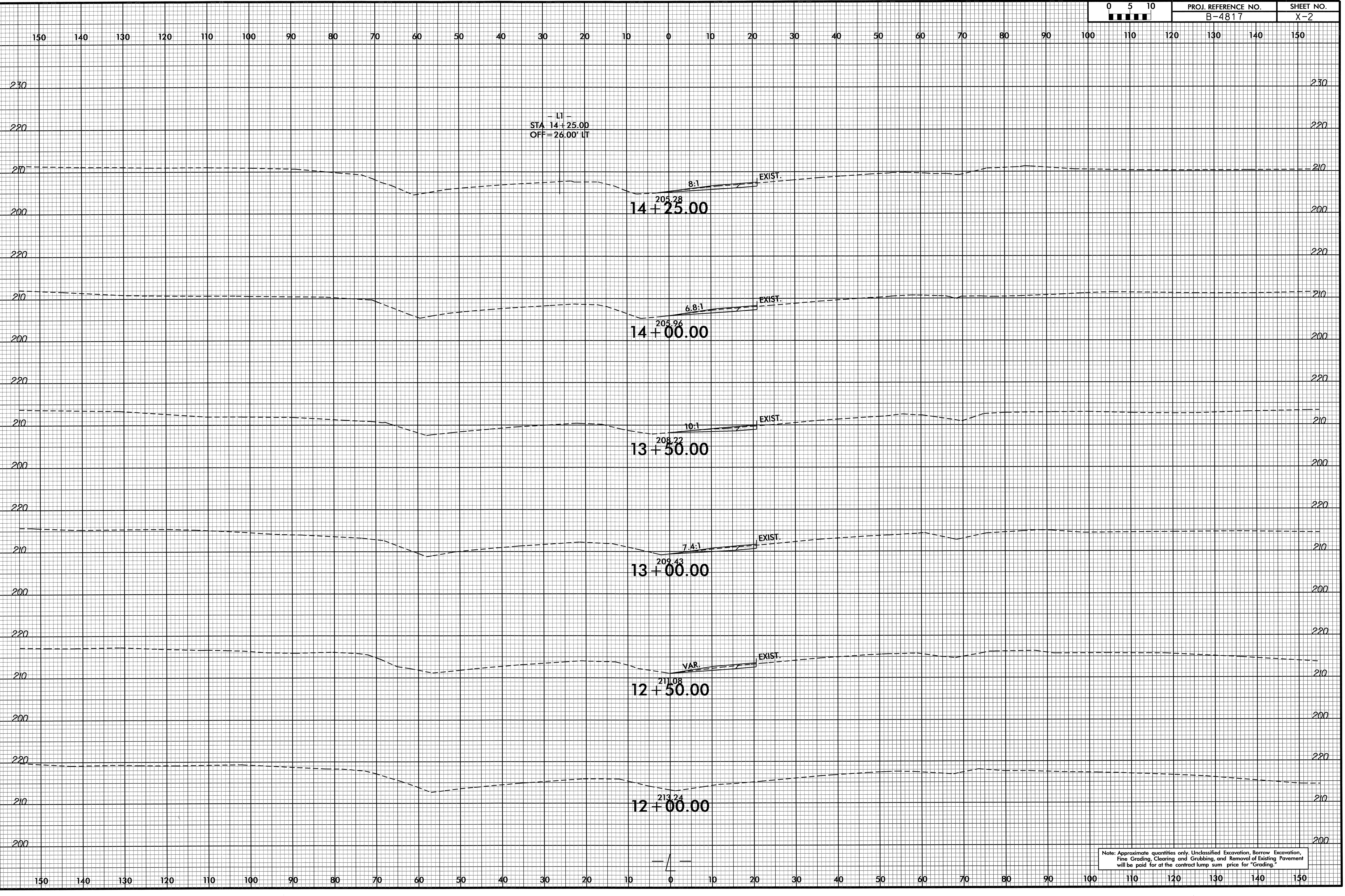


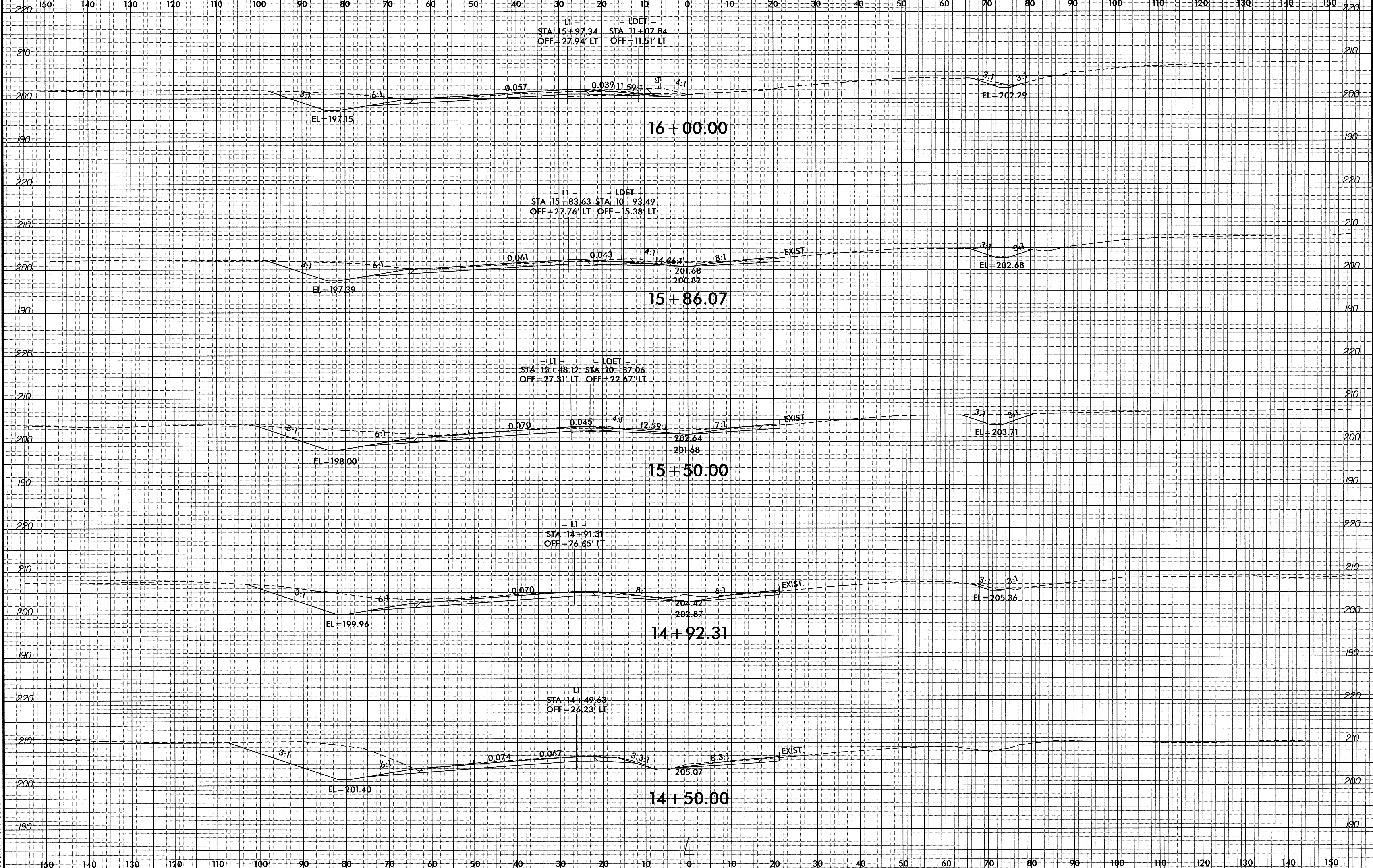


8/23/99



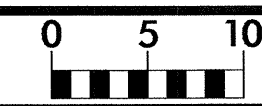
29-AUG-2012 09:05  
S:\PROJECTS\B-4817-rdu\xp1.lldgn

8/23/99

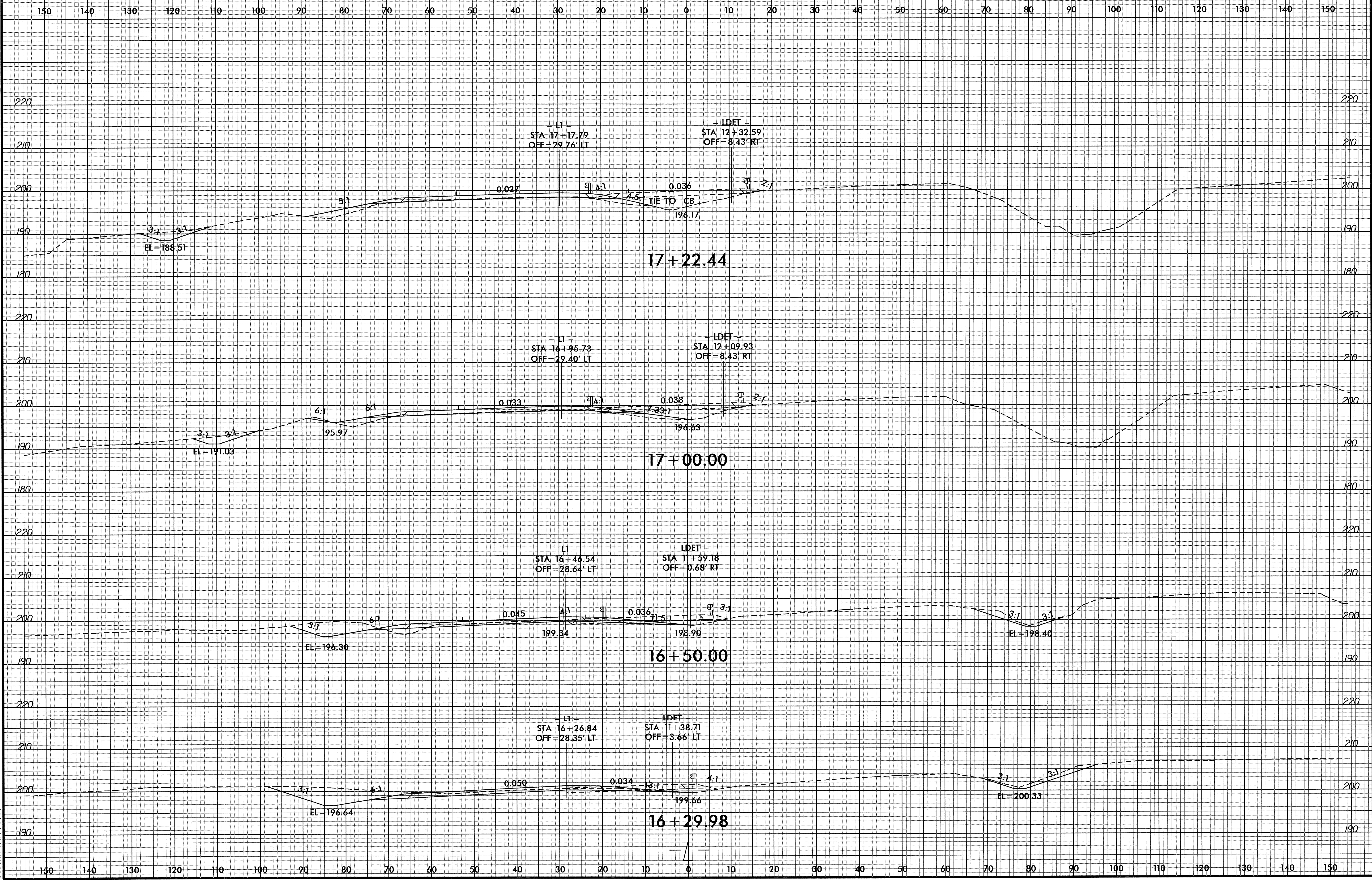


13-AUG-2002 15:36  
 P:\Roadway\150\B4817\_rdy\_xp1.dgn  
 \$\$\$USER\$\$\$

8/23/95

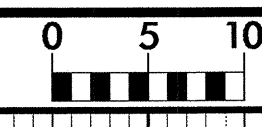


PROJ. REFERENCE NO.	SHEET NO.
B-4817	X-4

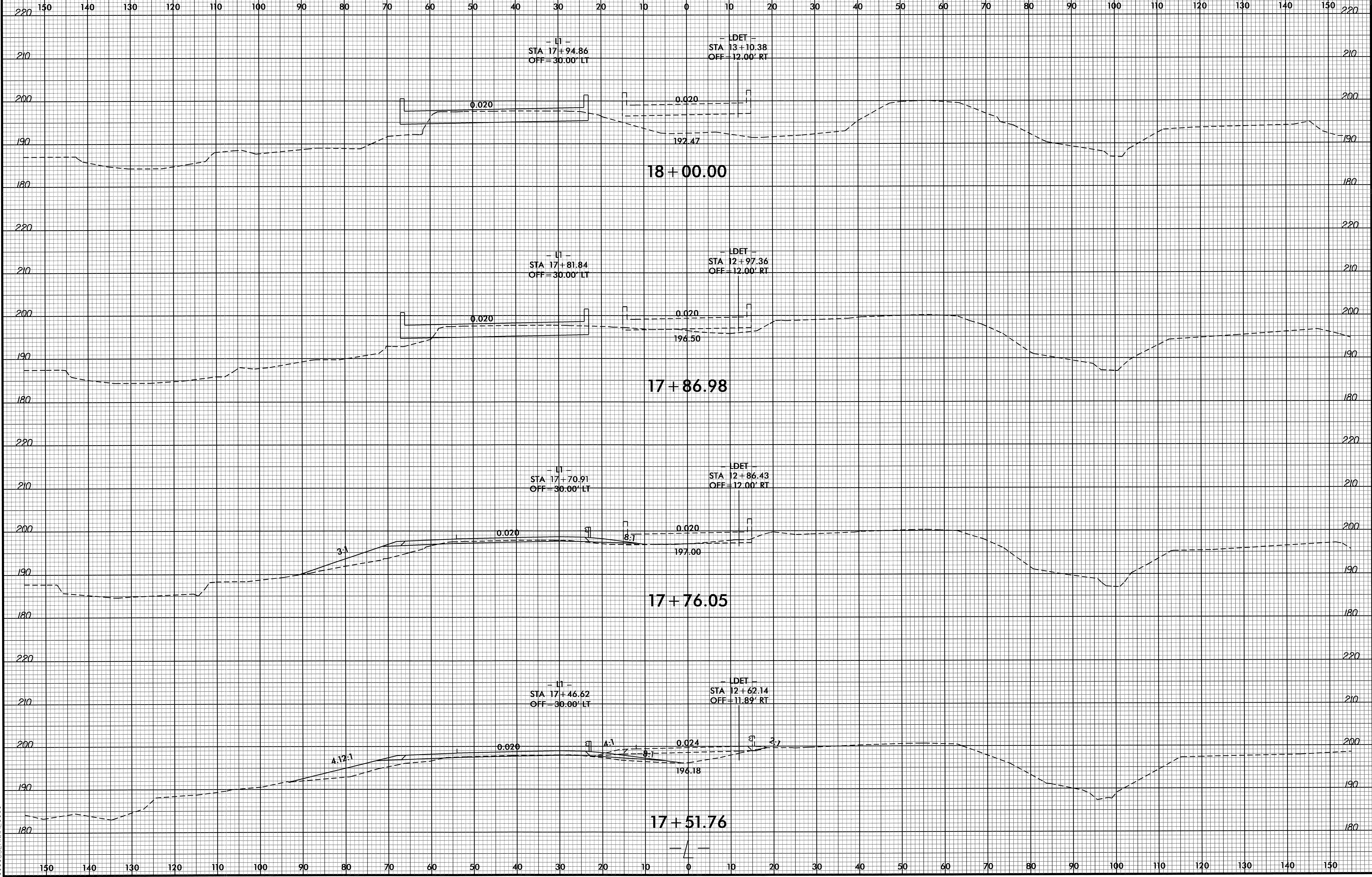


13-AUG-2012 15:36  
 R:\PROJECTS\X\B-4817\_rdu\_xpl.dgn  
 \$\$\$USERNAME\$\$\$

8/23/99

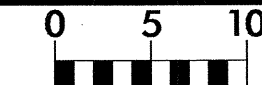


PROJ. REFERENCE NO.	SHEET NO.
B-4817	X-5



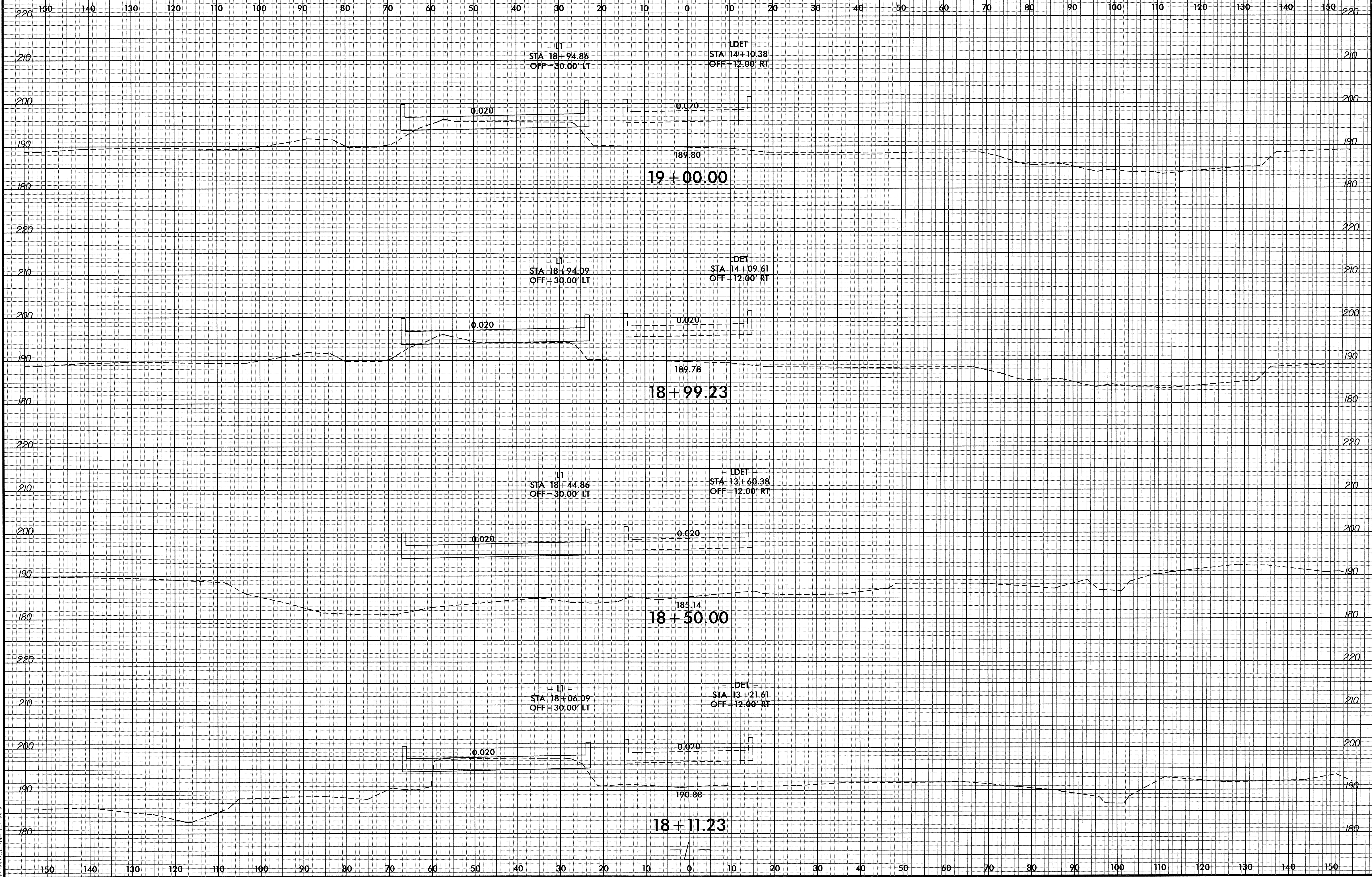
13-AUG-2002 15:36  
P:\Roadwork\X50\4817\_rdy\_xpl.dgn  
\$\$\$\$\$USER\$NAME\$\$\$\$\$

8/23/99



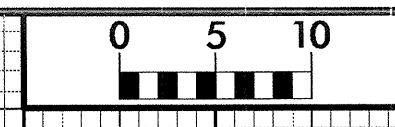
PROJ. REFERENCE NO.  
B-4817

SHEET NO.  
X-6

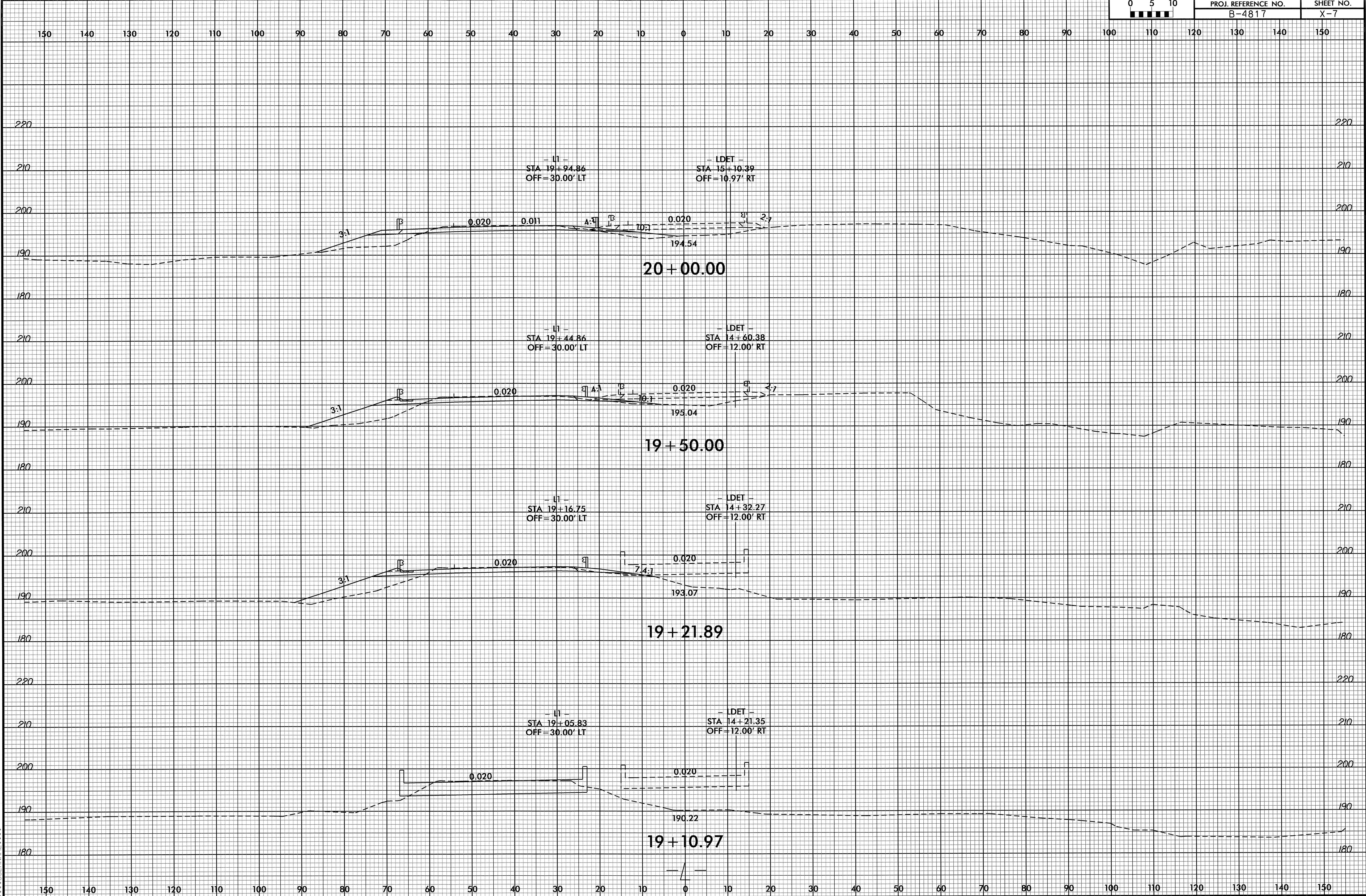


15 AUG 2012 15:56  
D:\PROJECTS\B4817\rdy\_xpl1.dgn  
\$\$\$\$\$

8/23/95



PROJ. REFERENCE NO. B-4817 SHEET NO. X-7



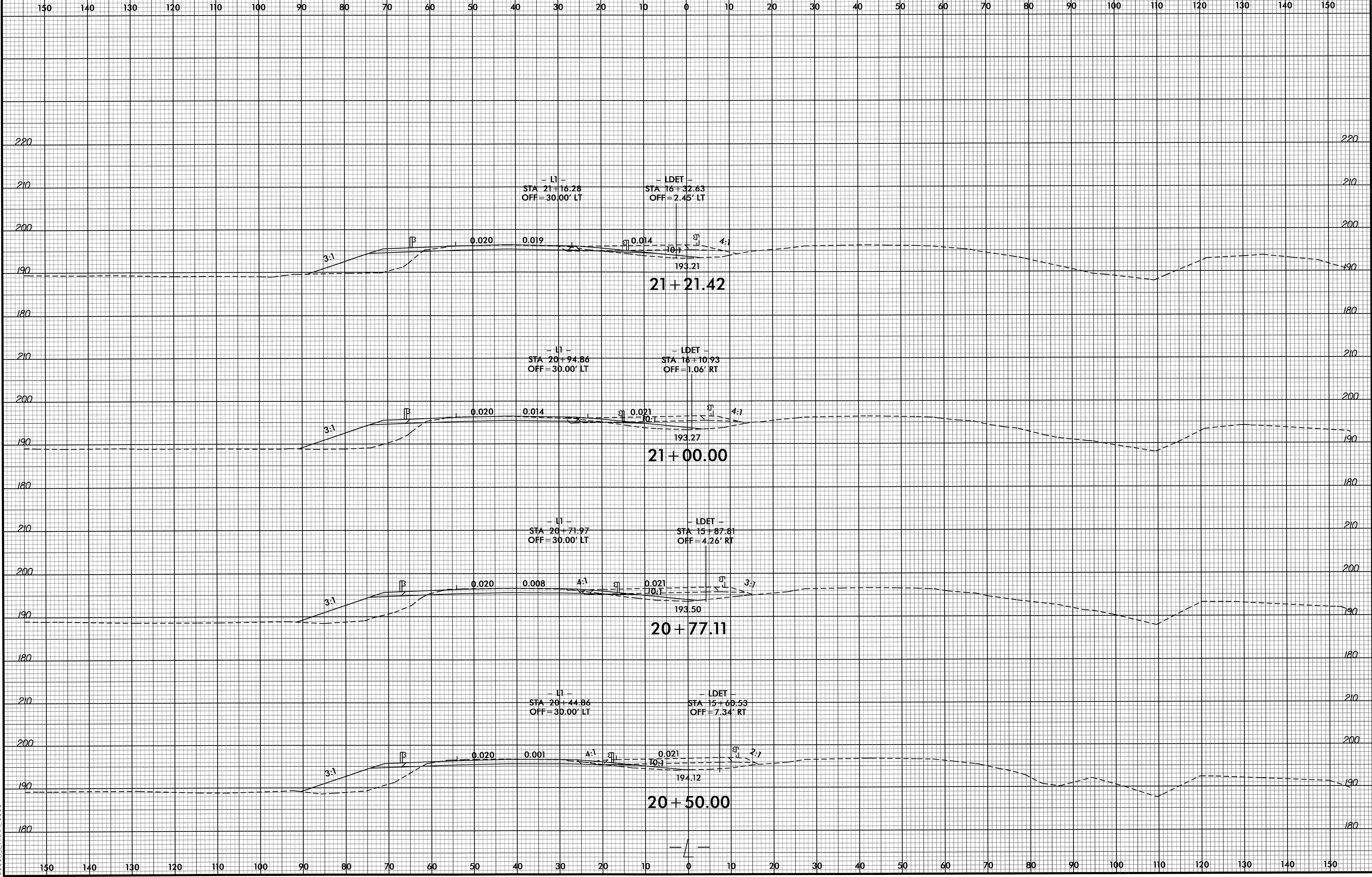
13-AUG-2012 15:36  
R:\Roadway\X\CC\B4817\_rdy\_xpl.dgn  
\$\$\$\$\$USERFRAME\$\$\$\$\$

B/23/99

0 5 10

PROJ. REFERENCE NO.  
B-4817

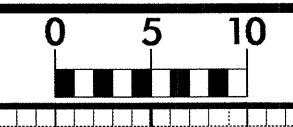
SHEET NO.  
X-8



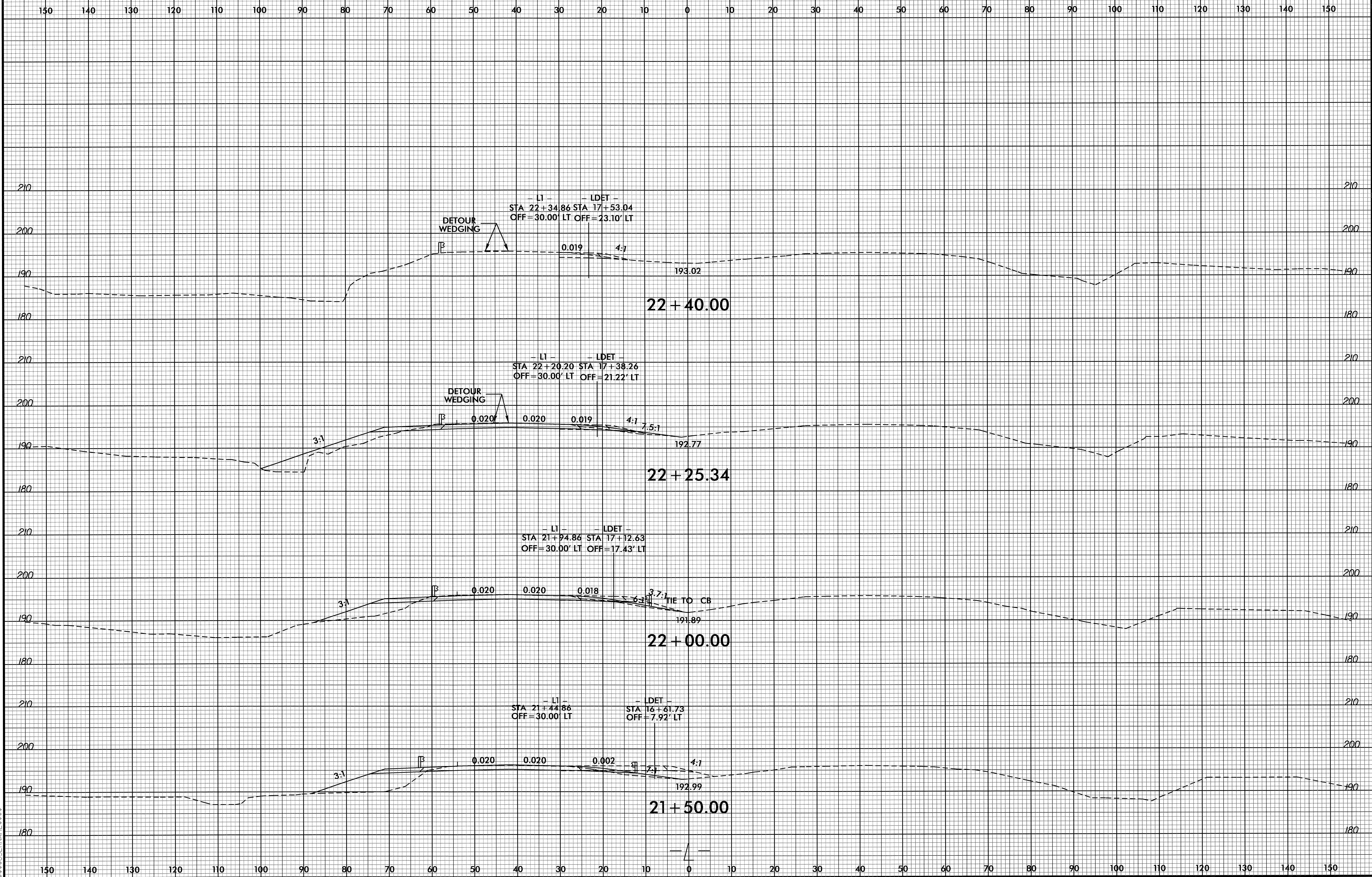
B:\AUC-2012\15136  
RA\PROJECTS\X-8\B-4817-rdy\_xpl.dgn  
\$\$\$\$USERNAME\$\$\$\$



8/23/99



PROJ. REFERENCE NO.	SHEET NO.
B-4817	X-9



- L1 - - LDET -  
 STA 22+34.86 STA 17+53.04  
 OFF=30.00' LT OFF=23.10' LT

22+40.00

- L1 - - LDET -  
 STA 22+20.20 STA 17+38.26  
 OFF=30.00' LT OFF=21.22' LT

22+25.34

- L1 - - LDET -  
 STA 21+94.86 STA 17+12.63  
 OFF=30.00' LT OFF=17.43' LT

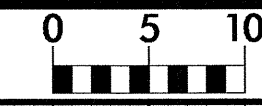
22+00.00

- L1 - - LDET -  
 STA 21+44.86 STA 16+61.73  
 OFF=30.00' LT OFF=7.92' LT

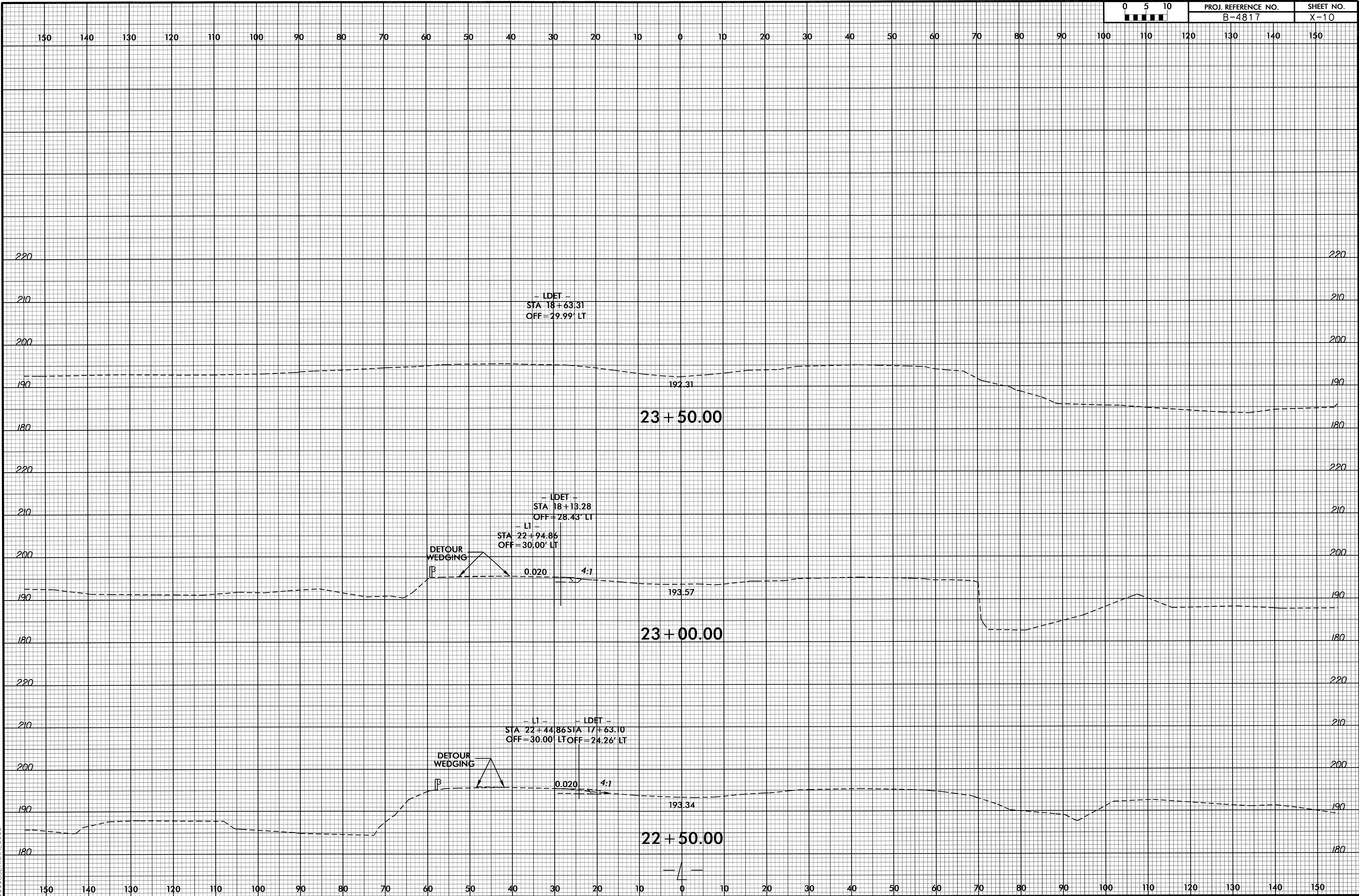
21+50.00

3-AUG-2002 05:55  
 P:\PROJECTS\2002\B-4817-rdy-xpl.dgn  
 \$\$\$SERIAL\$\$\$

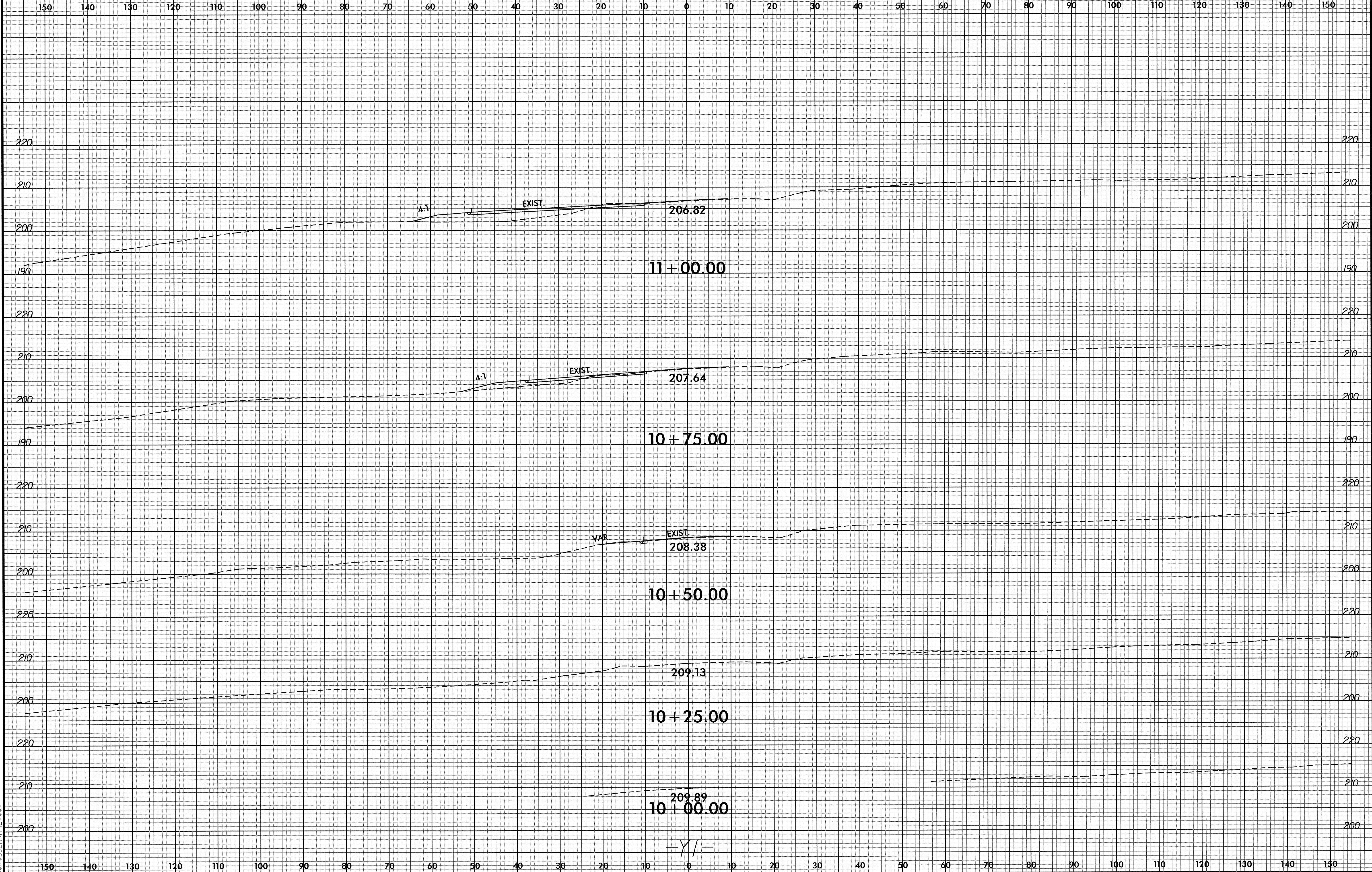
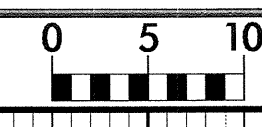
8/23/99

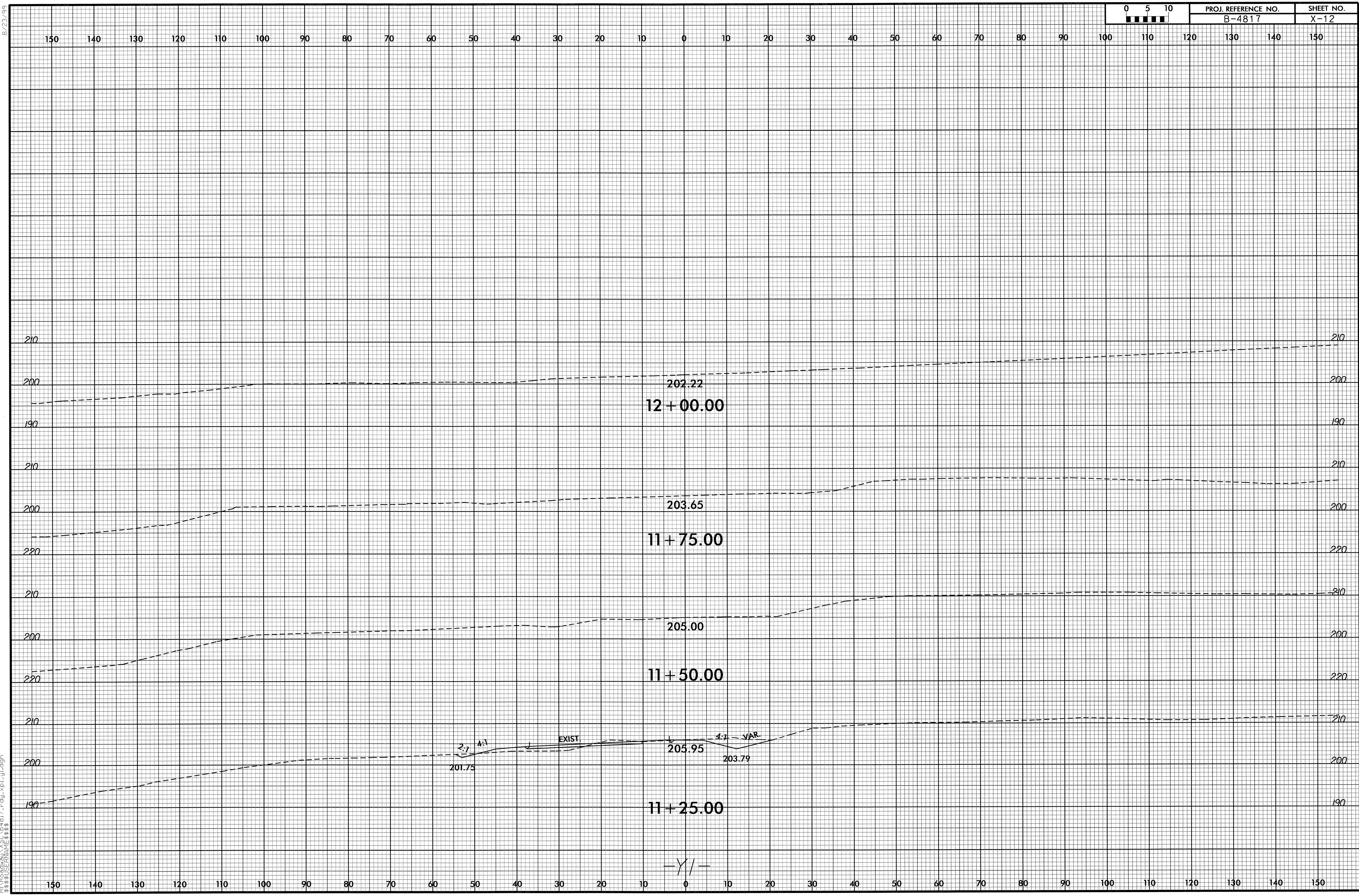


PROJ. REFERENCE NO.	SHEET NO.
B-4817	X-10



E:\AUG-2002\6555\PROJECTS\B-4817\817\_r.dwg

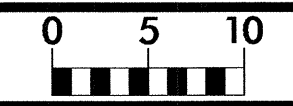




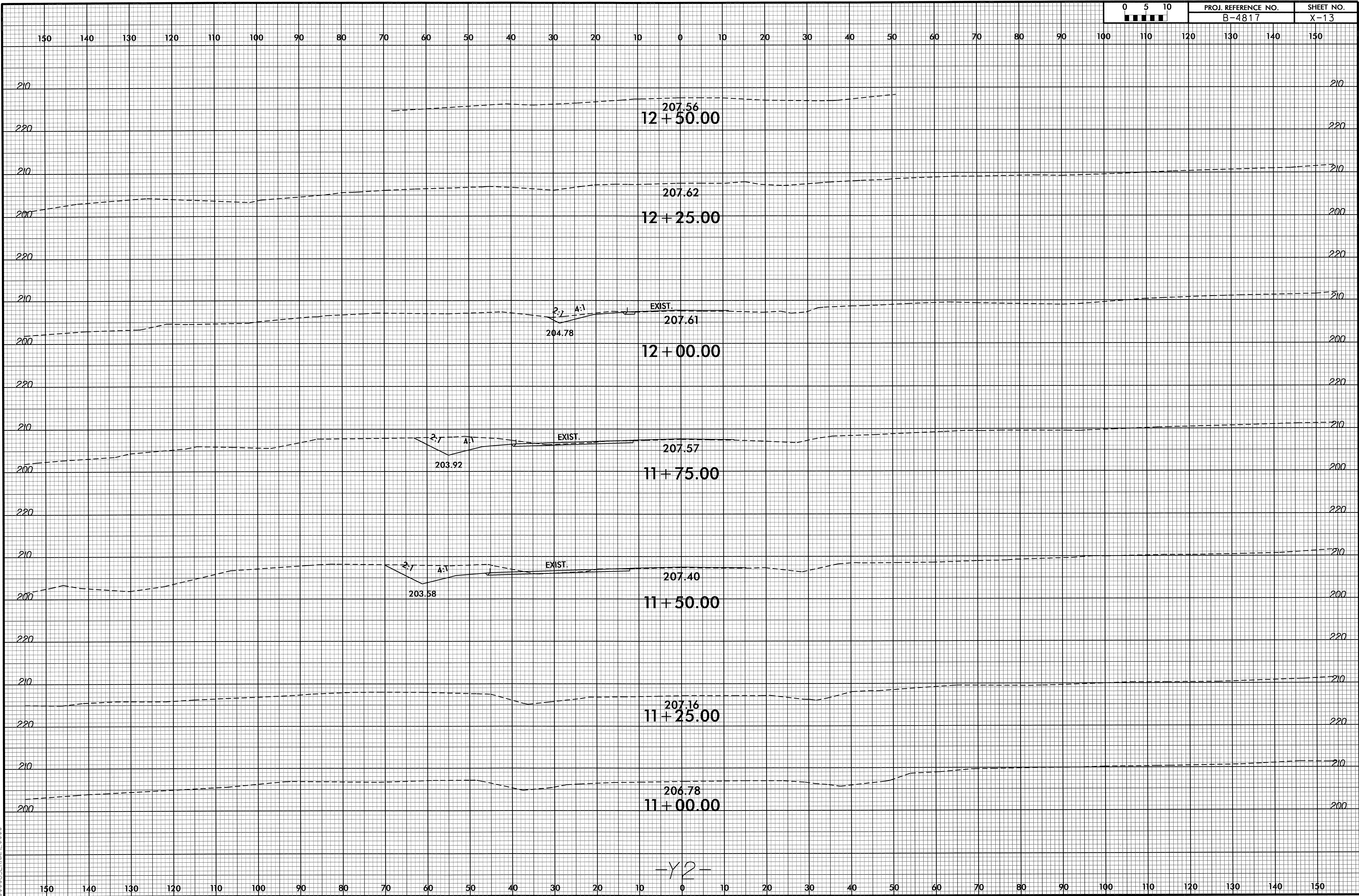
8/23/99

P:\AUG-2002\15\_35  
 P:\PROJECTS\1535\B4817\_rdy\_xpl.dgn  
 \$\$\$USERNAME\$\$\$

8/23/99



PROJ. REFERENCE NO.	SHEET NO.
B-4817	X-13



207.56  
12+50.00

207.62  
12+25.00

204.78  
2:1 4:1  
EXIST.  
207.61  
12+00.00

203.92  
2:1 4:1  
EXIST.  
207.57  
11+75.00

203.58  
2:1 4:1  
EXIST.  
207.40  
11+50.00

207.16  
11+25.00

206.78  
11+00.00

-Y2-

13-AUG-2002 15:55  
P:\505\350\B4817\_rdy\_xp1\_y2.dgn  
\$\$\$\$SERIAL\$\$\$\$