

**T.I.P.: U-3459**

**CONTRACT: C203127**

**STATE OF NORTH CAROLINA  
DEPARTMENT OF TRANSPORTATION**

**PAVEMENT MARKING PLAN  
ROWAN COUNTY**

**INDEX**

SHEET NO.	DESCRIPTION
PMP-1	PAVEMENT MARKING PLAN COVER SHEET
PMP-2	PAVEMENT MARKING SCHEDULE
PMP-3 THRU PMP-5	PAVEMENT MARKING DETAILS
PMP-6	CROSSWALK AND STOP BAR PAVEMENT MARKING DETAIL

**ROADWAY STANDARD DRAWING**

THE FOLLOWING ROADWAY STANDARDS AS APPEAR IN "ROADWAY STANDARD DRAWINGS" - PROJECT SERVICES UNIT - N.C. DEPARTMENT OF TRANSPORTATION - RALEIGH, N.C., DATED JANUARY 2012 ARE APPLICABLE TO THIS PROJECT AND BY REFERENCE HEREBY ARE CONSIDERED A PART OF THESE PLANS:

STD. NO.	TITLE
1205.01	PAVEMENT MARKINGS - LINE TYPES AND OFFSETS
1205.02	PAVEMENT MARKINGS - TWO-LANE AND MULTILANE ROADWAYS
1205.04	PAVEMENT MARKINGS - INTERSECTIONS
1205.05	PAVEMENT MARKINGS - TURN LANES
1205.06	PAVEMENT MARKINGS - LANE DROPS
1205.07	PAVEMENT MARKINGS - PEDESTRIAN CROSSWALKS
1205.08	PAVEMENT MARKINGS - SYMBOLS AND WORD MESSAGES
1205.09	PAVEMENT MARKINGS - PAINTED ISLANDS
1250.01	RAISED PAVEMENT MARKERS - INSTALLATION SPACING
1251.01	RAISED PAVEMENT MARKERS - PERMANENT AND TEMPORARY
1261.01	GUARDRAIL AND BARRIER DELINEATORS - INSTALLATION SPACING
1261.02	GUARDRAIL AND BARRIER DELINEATORS - TYPES AND MOUNTING
1262.01	GUARDRAIL END DELINEATION
1264.01	OBJECT MARKERS - TYPES
1264.02	OBJECT MARKERS - INSTALLATION

**GENERAL NOTES**

THE FOLLOWING GENERAL NOTES APPLY AT ALL TIMES FOR THE DURATION OF THE CONSTRUCTION PROJECT, EXCEPT WHEN OTHERWISE NOTED IN THE PLAN, OR DIRECTED BY THE ENGINEER.

A) INSTALL PAVEMENT MARKINGS AND PAVEMENT MARKERS ON THE FINAL SURFACE AS FOLLOWS:

ROAD NAME	MARKING	MARKER
ALL ROADS	THERMOPLASTIC	PERMANENT RAISED

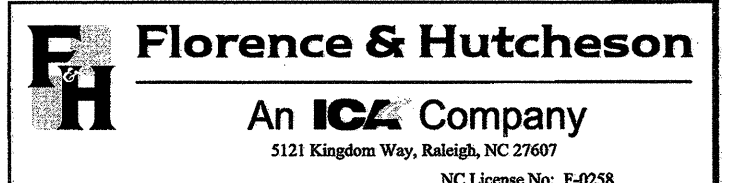
B) TIE PROPOSED PAVEMENT MARKING LINES TO EXISTING PAVEMENT MARKING LINES.

C) REMOVE/REPLACE ANY CONFLICTING/DAMAGED PAVEMENT MARKINGS AND MARKERS.

D) STOP BAR LOCATION AT NON-SIGNALIZED INTERSECTIONS MAY BE ADJUSTED AS DIRECTED BY THE ENGINEER.

E) UNLESS OTHERWISE SPECIFIED, HEATED-IN-PLACE THERMOPLASTIC MAY BE USED IN LIEU OF EXTRUDED THERMOPLASTIC FOR STOP BARS, SYMBOLS, CHARACTERS AND DIAGONALS. IF HEATED-IN-PLACE IS USED, IT SHALL BE PAID FOR USING THE EXTRUDED THERMOPLASTIC PAY ITEM.

F) SEE ROADWAY PLANS FOR ALTERNATE CURB RAMP DESIGNS WHEN INDICATED ON PAVEMENT MARKING DETAIL SHEETS.



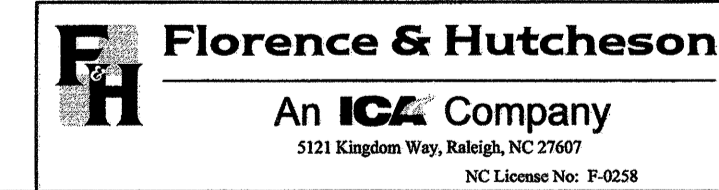
*Michael T. Kerna*  
  
 7-16-12

NORTH CAROLINA DEPARTMENT OF TRANSPORTATION  
  
**RAIL DIVISION**  
 PREPARED BY: **ENGINEERING & SAFETY BRANCH**  
 MAIL: 1556 MAIL SERVICE CENTER RALEIGH, NC 27609-1556  
 DELIVERY: 800 CAPITAL BOULEVARD RALEIGH, NC 27603  
 PHONE: (919) 715-8803 FAX: (919) 715-8804

PROJECT	U-3459 - KLUMAC ROAD		
TITLE	PAVEMENT MARKING PLAN COVER SHEET		
LOCATION	KLUMAC ROAD (SR 2541) IN SALISBURY, NC		
DGN BY	GEP	RAILROAD	NORTH CAROLINA RAILROAD/NORFOLK SOUTHERN
DWN BY	GEP	VAL SEC	
CHK BY	MTR	DATE	JULY 2012
		SCALE	
		MILE POST	MP 335.2
			<b>PMP-1</b>

### FINAL PAV'T MARKING SCHEDULE

<u>SYMBOL</u>	<u>DESCRIPTION</u>
PAVEMENT MARKING LINES	
<u>THERMOPLASTIC (4", 90 MILS)</u>	
TA	WHITE EDGELINE
<u>THERMOPLASTIC (4", 120 MILS)</u>	
TD	3 FT.-9FT./SP WHITE MINISKIP
TE	WHITE SOLID LANE LINE
TI	YELLOW DOUBLE CENTER LINE
T8	2 FT.-6 FT./SP WHITE MINISKIP
<u>THERMOPLASTIC (8", 90 MILS)</u>	
TP	YELLOW DIAGONAL
<u>THERMOPLASTIC (24", 120 MILS)</u>	
T2	WHITE STOP BAR
PAVEMENT MARKING SYMBOLS	
<u>THERMOPLASTIC SYMBOL (90 MILS)</u>	
UA	LEFT TURN ARROW
UB	RIGHT TURN ARROW
UE	COMBO RIGHT/STRAIGHT ARROW
UN	24" YIELD LINE TRIANGLE
PAVEMENT MARKERS	
<u>PERMANENT RAISED</u>	
MA	YELLOW & YELLOW
MB	CRYSTAL & RED



NO.	BY	DATE	REVISION

*Michael T. Ryznar*

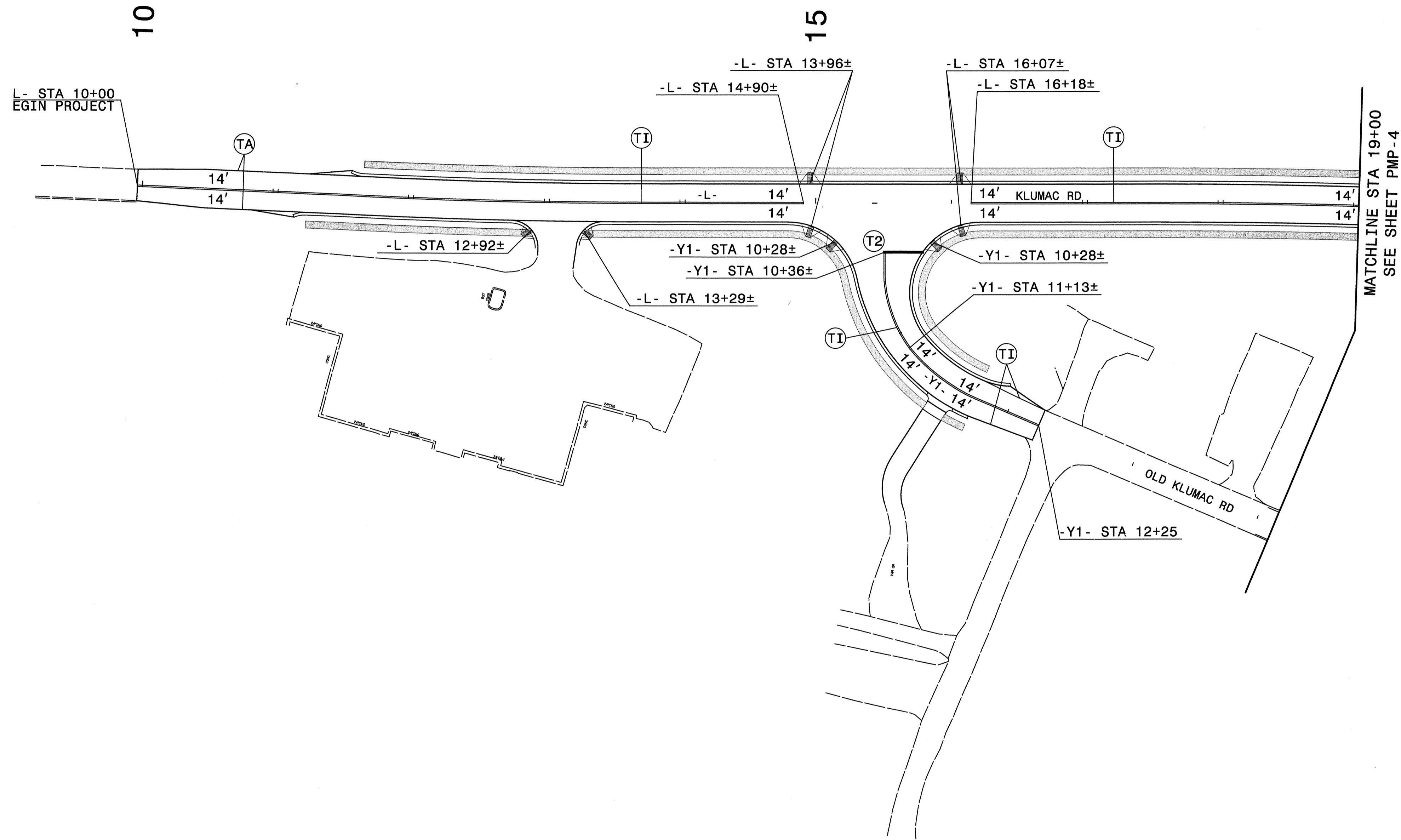
NORTH CAROLINA DEPARTMENT OF TRANSPORTATION

## RAIL DIVISION

PREPARED BY: **ENGINEERING & SAFETY BRANCH**

MAIL: 5535 MAIL SERVICE CENTER, RALEIGH, NC 27698-1556  
 DELIVERY: 900 CAPITAL BOULEVARD, RALEIGH, NC 27603  
 PHONE: (919) 715-8803, FAX: (919) 715-8804

<b>PROJECT</b> U-3459 - KLUMAC ROAD		<b>TITLE</b> FINAL PAVEMENT MARKING SCHEDULE	
<b>LOCATION</b> KLUMAC ROAD (SR 2541) IN SALISBURY, NC			
<b>DGN BY</b> GEP	<b>RAILROAD</b> NORTH CAROLINA RAILROAD/NORFOLK SOUTHERN	<b>MILE POST</b> MP 335.2	<b>PMP-2</b>
<b>DWN BY</b> GEP	<b>VAL SEC</b>		
<b>CHK BY</b> MTR	<b>DATE</b> JULY 2012	<b>SCALE</b>	

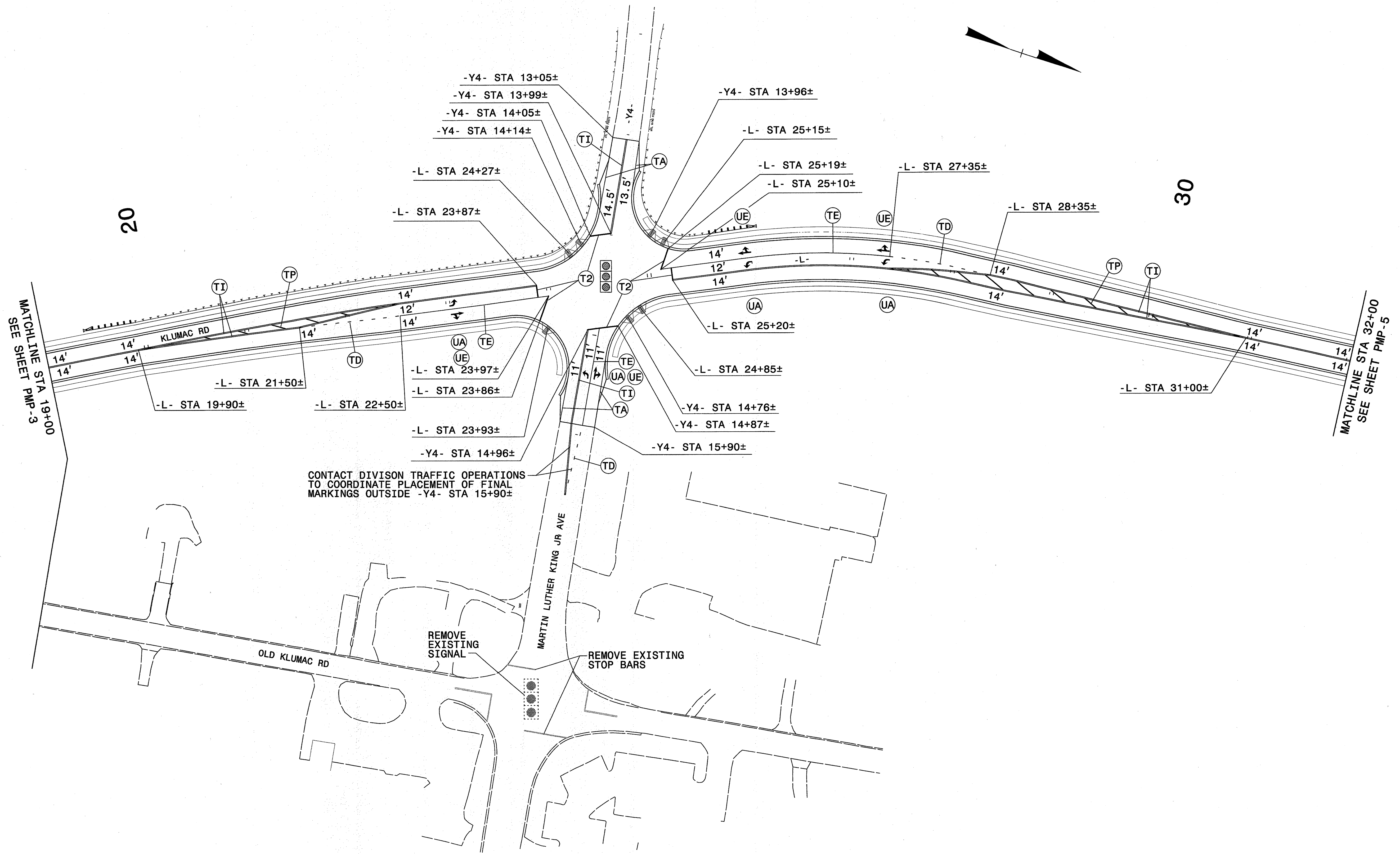


NO.	BY	DATE	REVISION

*Michael T. Riehma*  
 NORTH CAROLINA PROFESSIONAL ENGINEER  
 SEAL 15876  
 MICHAEL T. RIEHMA  
 8-1-12

NORTH CAROLINA DEPARTMENT OF TRANSPORTATION  
**RAIL DIVISION**  
 PREPARED BY: **ENGINEERING & SAFETY BRANCH**  
 MAIL: 1256 MAIL SERVICE CENTER, RALEIGH, NC 27639-1536  
 DELIVERY: 1800 CAPITAL BOULEVARD, RALEIGH, NC 27603  
 PHONE: (919) 715-8803  
 FAX: (919) 715-8804

PROJECT U-3459 - KLUMAC ROAD		TITLE PAVEMENT MARKING DETAIL	
LOCATION KLUMAC ROAD (SR 2541) IN SALISBURY, NC			
DGN BY GEP	RAILROAD NORTH CAROLINA RAILROAD/NORFOLK SOUTHERN	MILE POST MP 335.2	PMP-3
DWN BY GEP	VAL SEC		
CHK BY MTR	DATE JULY 2012	SCALE	



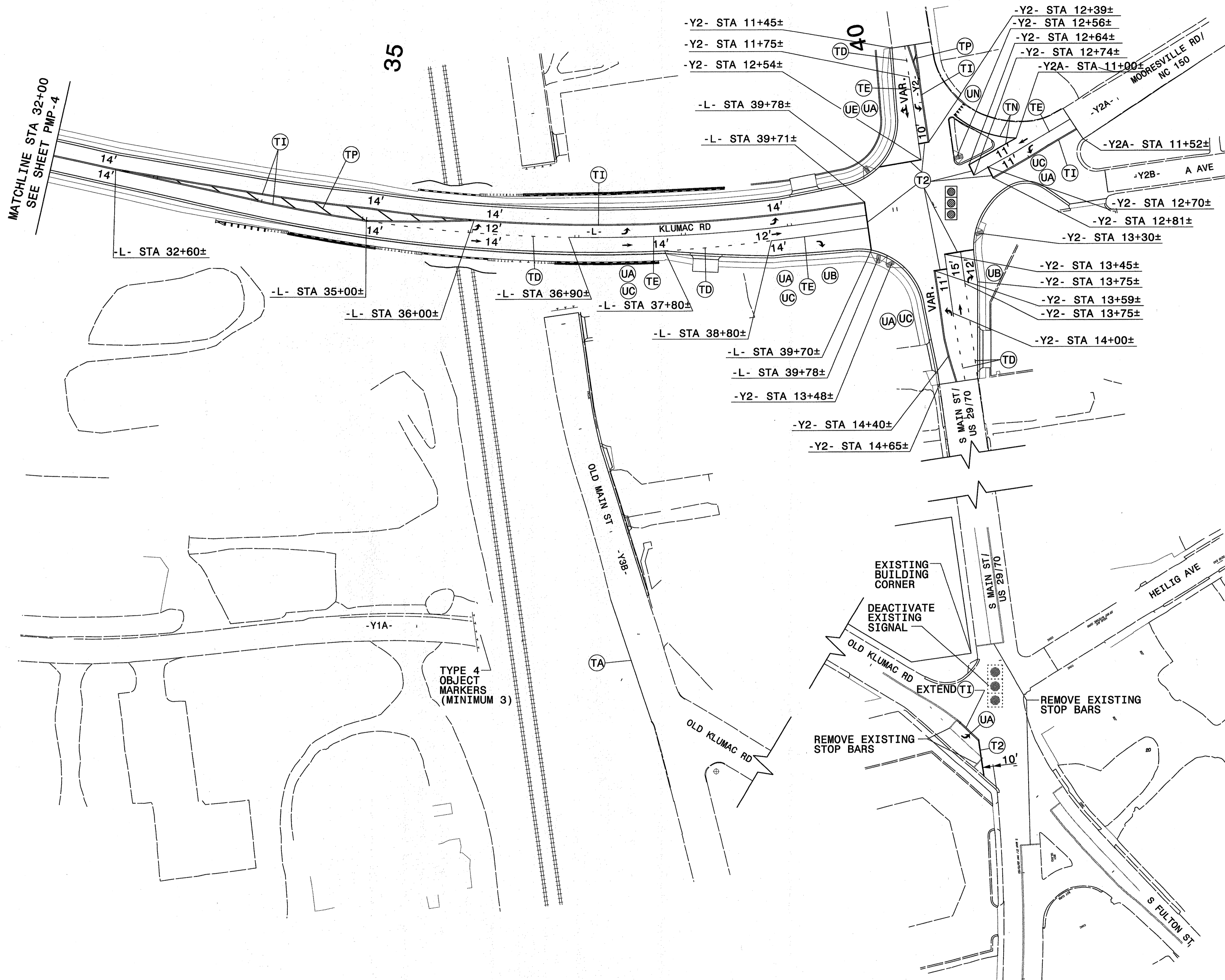
NO.	BY	DATE	REVISION

*Michael T. Kieran*  
 PROFESSIONAL ENGINEER  
 SEAL 15876  
 MICHAEL T. KIERAN  
 7-12-12

NORTH CAROLINA DEPARTMENT OF TRANSPORTATION  
**RAIL DIVISION**  
 PREPARED BY: **ENGINEERING & SAFETY BRANCH**  
 MAIL: 1556 MAIL SERVICE CENTER RALEIGH, NC 27699-1556  
 DELIVERY: 800 CAPITAL BOULEVARD RALEIGH, NC 27603  
 PHONE: (919) 715-8803 FAX: (919) 715-8804

PROJECT U-3459 - KLUMAC ROAD		TITLE PAVEMENT MARKING DETAIL	
LOCATION KLUMAC ROAD (SR 2541) IN SALISBURY, NC		MILE POST MP 335.2	
DGN BY GEP	RAILROAD NORTH CAROLINA RAILROAD/NORFOLK SOUTHERN	PMP-4	
DWN BY GEP	VAL SEC		
CHK BY MTR	DATE JULY 2012	SCALE	

**FH Florence & Hutcheson**  
 An ICA Company  
 5121 Kingdom Way, Raleigh, NC 27607  
 NC License No. F-0258



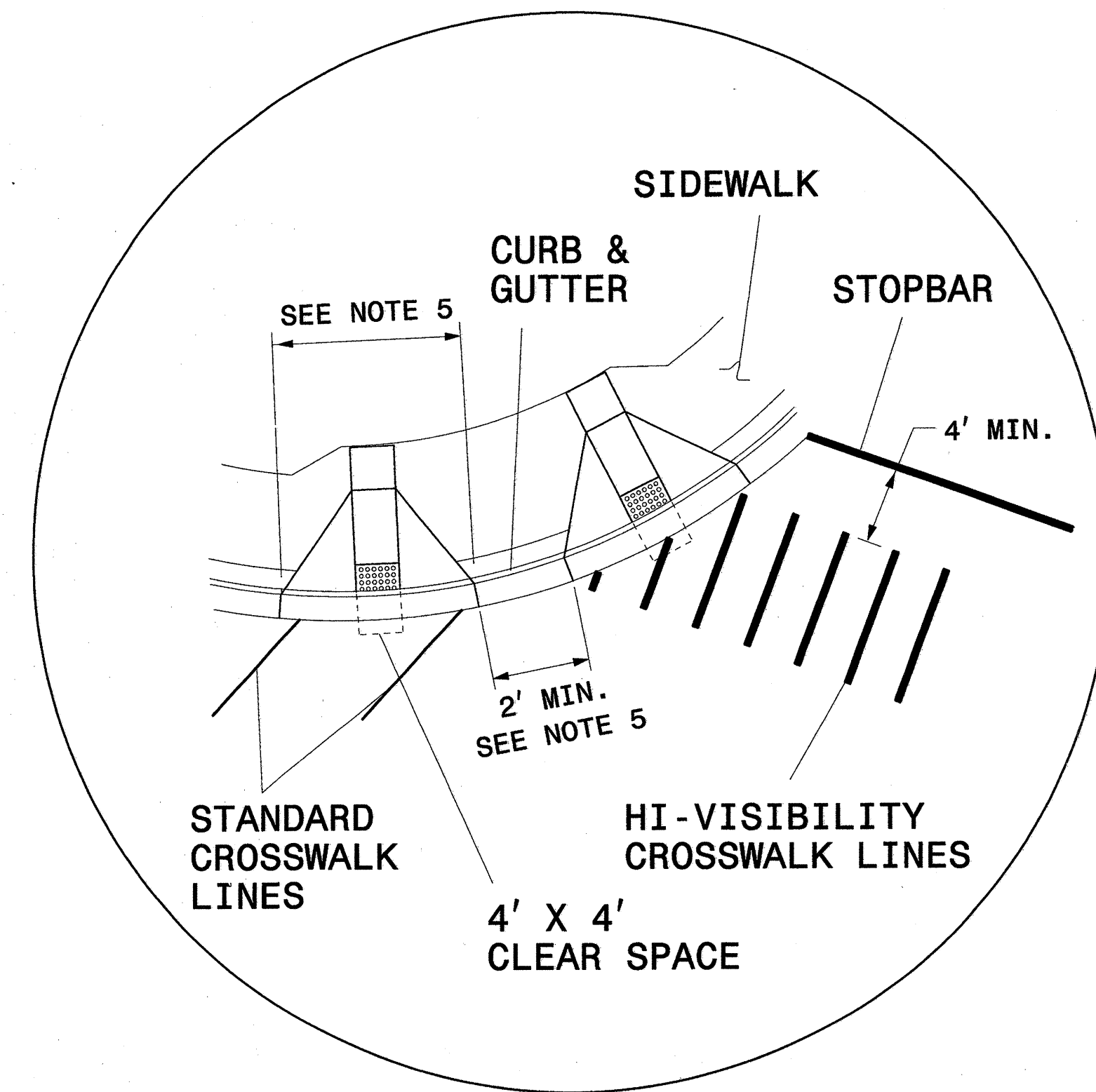
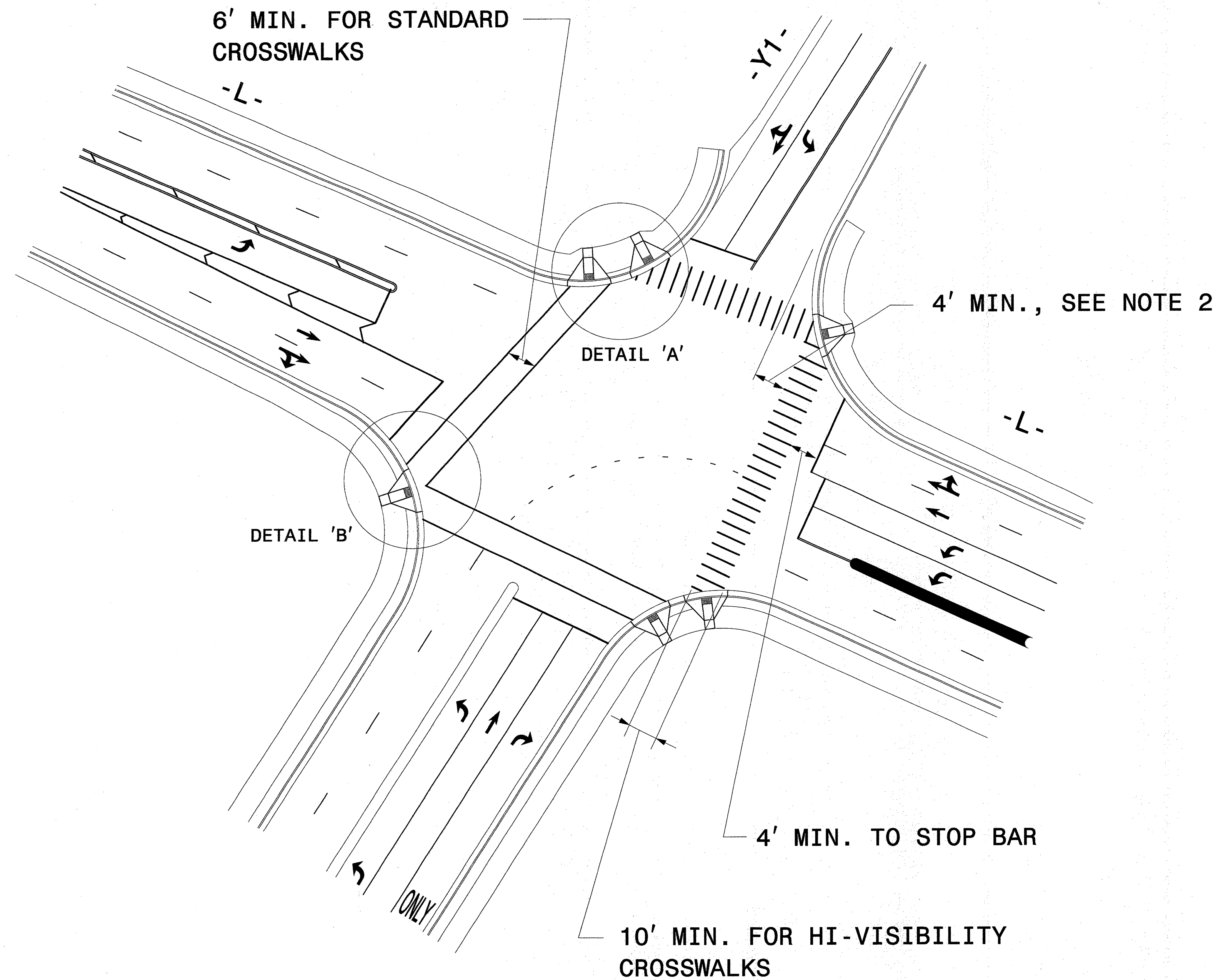
**FH** Florence & Hutcheson  
 An ICA Company  
 5121 Kingdom Way, Raleigh, NC 27607  
 NC License No. F-0258

NO.	BY	DATE	REVISION

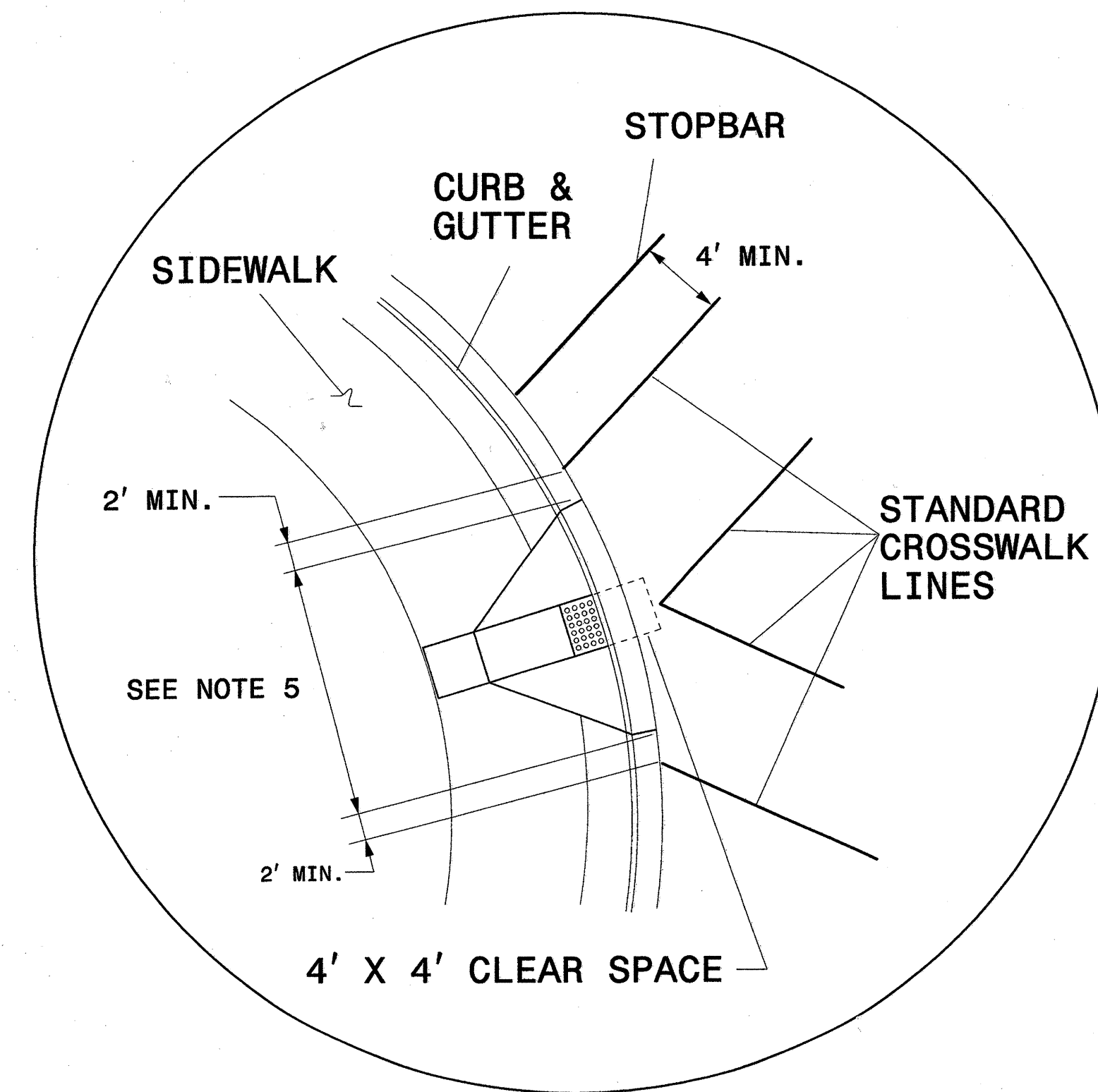
*Michael J. Rzepka*  
  
 MICHAEL J. RZEPKA  
 7-10-12

NORTH CAROLINA DEPARTMENT OF TRANSPORTATION  
  
**RAIL DIVISION**  
 PREPARED BY: **ENGINEERING & SAFETY BRANCH**  
 MAIL: 1556 MAIL SERVICE CENTER RALEIGH, NC 27639-1556  
 DELIVERY: 800 CAPITAL BOULEVARD RALEIGH, NC 27603  
 PHONE: (919) 715-8803 FAX: (919) 715-8804

PROJECT U-3459 - KLUMAC ROAD		MILE POST MP 335.2	
TITLE PAVEMENT MARKING DETAIL			
LOCATION KLUMAC ROAD (SR 2541) IN SALISBURY, NC			
DGN BY GEP	RAILROAD NORTH CAROLINA RAILROAD/NORFOLK SOUTHERN	MILE POST MP 335.2	
DWN BY GEP	VAL SEC		
CHK BY MTR	DATE JULY 2012	SCALE	PMP-5



DETAIL 'A'- DUAL CURB RAMPS



DETAIL 'B'- SINGLE DIAGONAL CURB RAMP

**GUIDANCE DETAIL FOR STANDARD AND HI-VISIBILITY CROSSWALKS AT SIGNALIZED OR STOP SIGN CONTROLLED INTERSECTIONS**

**NOTES:**

- USE DETAILS ABOVE AND THE FOLLOWING NOTES FOR GUIDANCE IN PLACING CROSSWALKS AND STOP BARS NOT STATIONED ON THE DETAIL SHEETS OR WHEN FIELD ADJUSTMENTS REQUIRED MOVING STATIONED MARKINGS AS DIRECTED BY THE ENGINEER. REFER TO NCDOT ROADWAY STANDARD DRAWINGS, MUTCD AND ADA STANDARDS FOR ADDITIONAL GUIDANCE.
- SET BACK DISTANCE FROM INSIDE CROSSWALK MARKING TO NEAREST EDGE OF TRAVEL IS 4' MIN.
- BEYOND THE BOTTOM GRADE BRAKE, A CLEAR SPACE OF 4' X 4' MINIMUM SHALL BE PROVIDED WITHIN THE WIDTH OF THE CROSSWALK.
- SINGLE DIAGONAL CURB RAMPS WITH FLARED SIDES SHALL HAVE A SEGMENT OF CURB 2 FEET LONG MINIMUM LOCATED ON EACH SIDE OF THE CURB RAMP AND WITHIN THE MARKED CROSSING, SEE DETAIL 'B'.
- CURB RAMPS SHALL BE CONSTRUCTED IN ACCORDANCE TO THE LATEST NCDOT ROADWAY STANDARD DRAWINGS.

**FH Florence & Hutcheson**  
An ICA Company  
5121 Kingdom Way, Raleigh, NC 27607  
NC License No. P-0258

R:\Traffic\Pavement Marking\Klumac\_r.dwg.pmp\_curbramps.dgn

Florence & Hutcheson 7/2012

NO.	BY	DATE	REVISION

*Michael T. Rzepka*  
  
 7-10-12

NORTH CAROLINA DEPARTMENT OF TRANSPORTATION  
  
**RAIL DIVISION**  
 PREPARED BY: **ENGINEERING & SAFETY BRANCH**  
 MAIL: MAIL SERVICE CENTER, RALEIGH, NC 27699-1556  
 DELIVERY: 960 CAPITAL BOULEVARD, RALEIGH, NC 27603  
 PHONE: (919) 715-8803  
 FAX: (919) 715-8804

PROJECT	U-3459 - KLUMAC ROAD		
TITLE	CROSSWALK AND STOP BAR PAVEMENT MARKING DETAIL		
LOCATION	KLUMAC ROAD (SR 2541) IN SALISBURY, NC		
DGN BY	GEP	RAILROAD	NORTH CAROLINA RAILROAD/NORFOLK SOUTHERN
DWN BY	GEP	VAL SEC	MILE POST MP 335.2
CHK BY	MTR	DATE	JULY 2012
		SCALE	
			<b>PMP-6</b>