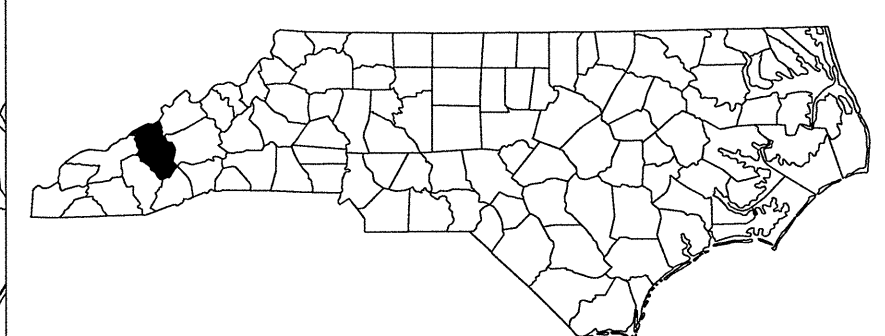
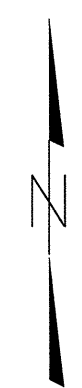
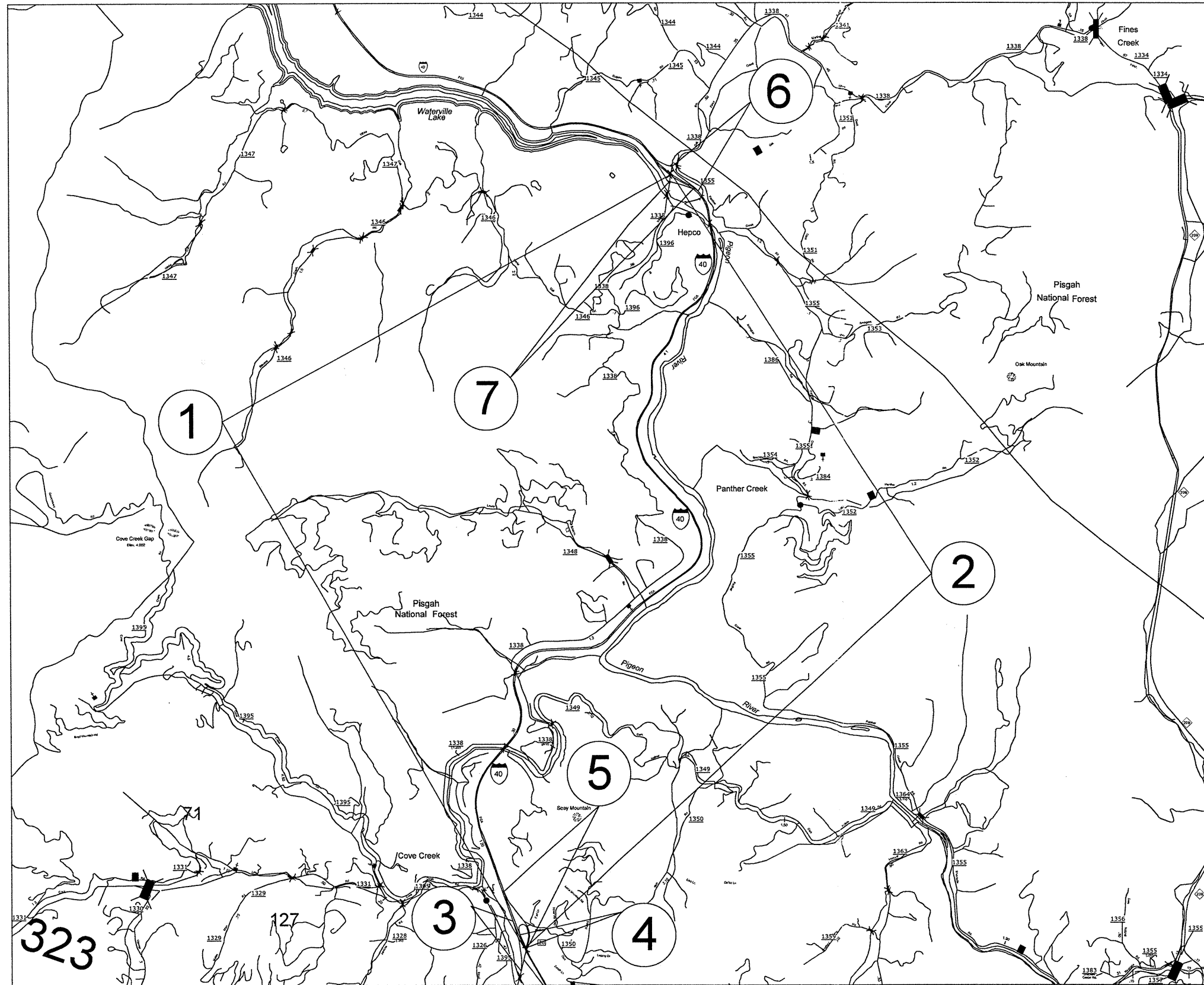


050197

HAYWOOD COUNTY

PROJECT REFERENCE NO.		SHEET NO.
I-5322		1
STATE PROJECT	F.A. PROJECT NO.	DESCRIPTION
I-5322		



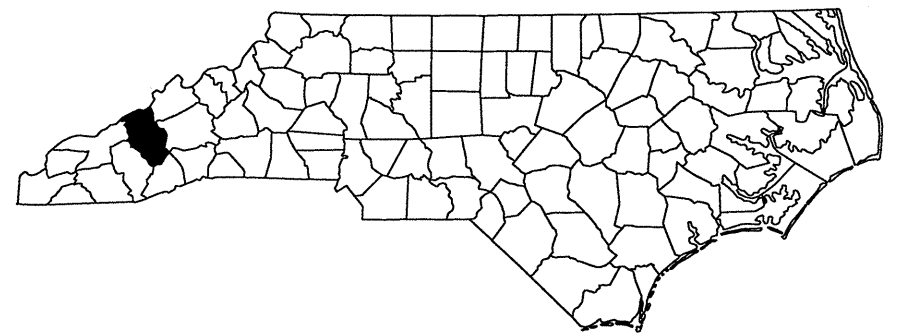
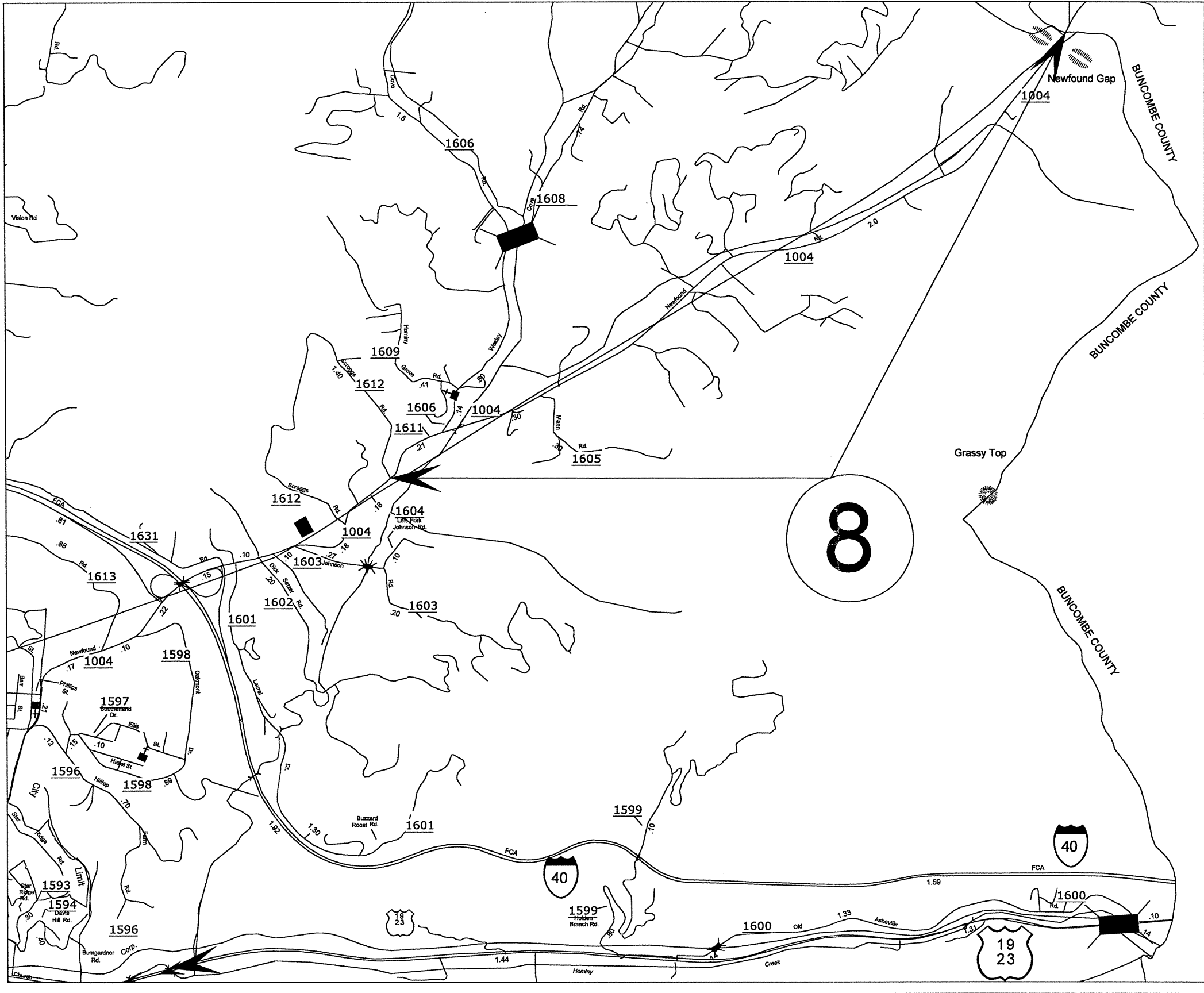
323

127

*****SYTIME*****
 *****SDGN*****
 *****USERNAME*****

HAYWOOD COUNTY

PROJECT REFERENCE NO.		SHEET NO.
14CR20441.9		2
STATE PROJECT	F.A. PROJECT NO.	DESCRIPTION
14CR20441.9		

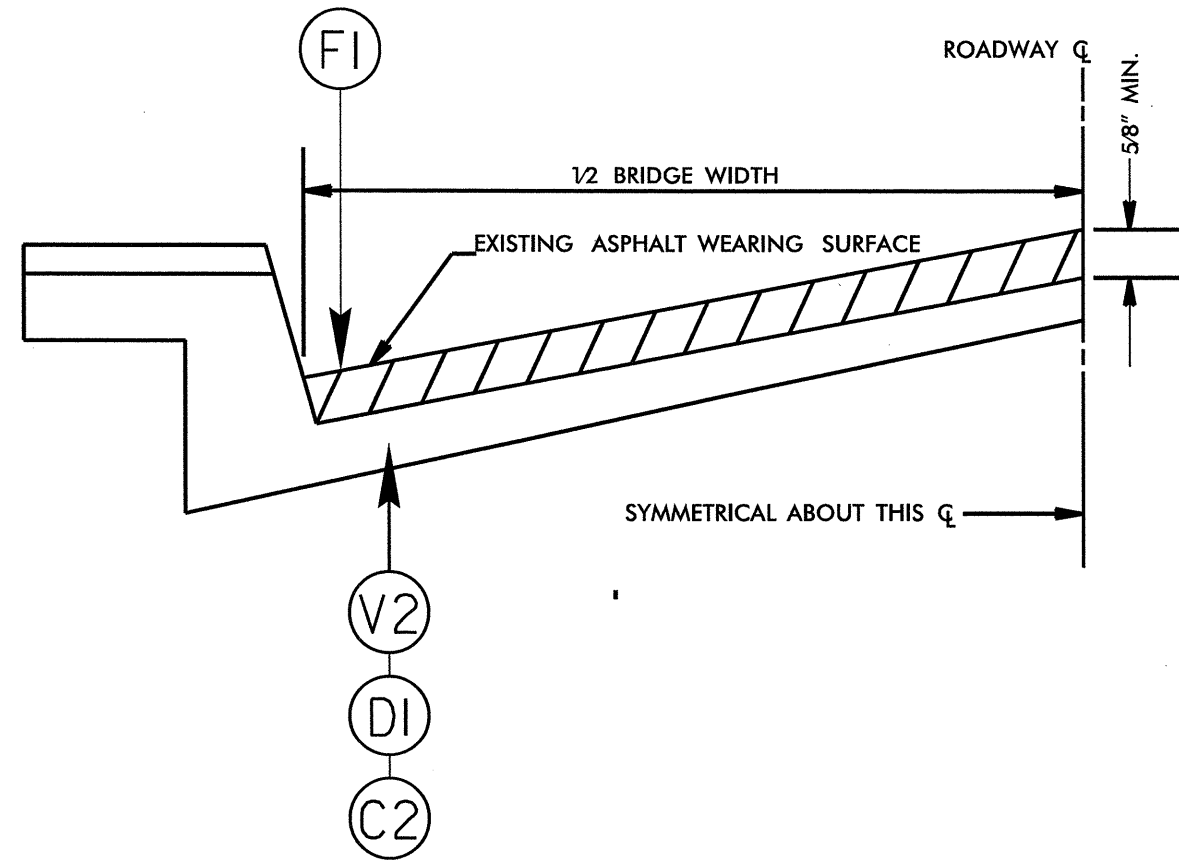


050157

SURFACING SCHEDULE

PROJECT REFERENCE NO.		SHEET NO.
I-5322		3
STATE PROJECT	F.A. PROJECT NO.	DESCRIPTION
I-5322		

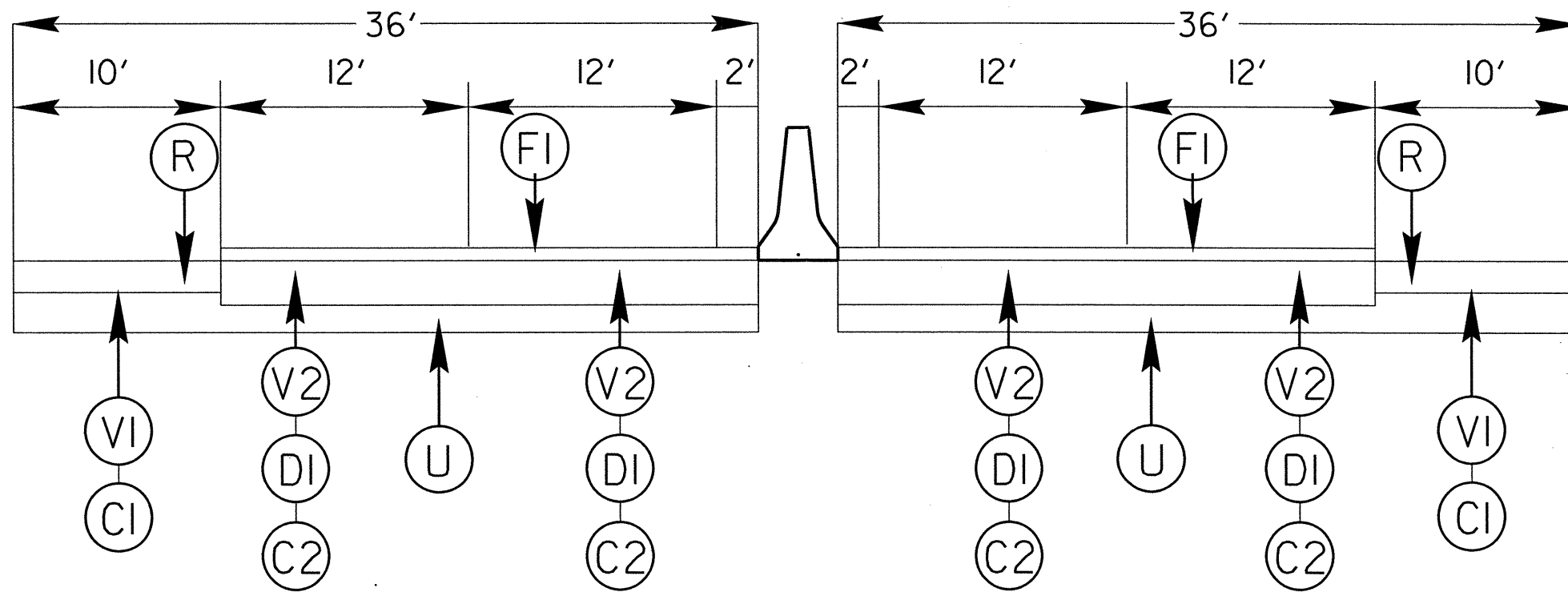
ITEM NO	DESCRIPTION
C1	ASPHALT CONCRETE SURFACE COURSE, TYPE S9.5B, AT AN AVERAGE RATE OF 168 LBS. PER SQ. YD. (1 1/2")
C2	ASPHALT CONCRETE SURFACE COURSE, TYPE S9.5D, AT AN AVERAGE RATE OF 168 LBS. PER SQ. YD. (1 1/2")
D1	ASPHALT CONCRETE INTERMEDIATE COURSE, TYPE I19.0D, AT AN AVERAGE RATE OF 342 LBS. PER SQ. YD. (3")
D2	ASPHALT CONCRETE INTERMEDIATE COURSE, TYPE I19.0B, AT AN AVERAGE RATE OF 342 LBS. PER SQ. YD. (3")
F1	OPEN GRADED ASPHALT FRICTION COURSE, TYPE FC-1 MOD, AT AN AVERAGE RATE OF 70 LBS. PER SQ. YD.
R	MILLED RUMBLE STRIPS
V1	MILLING ASPHALT PAVEMENT 1 1/2" IN DEPTH IN DISTRESSED AREAS AS DIRECTED BY PROJECT ENGINEER.
V2	MILLING ASPHALT PAVEMENT 4 1/2" IN DEPTH AS DIRECTED BY PROJECT ENGINEER.
V3	MILLING ASPHALT PAVEMENT 3" IN DEPTH AT LOCATIONS AS DIRECTED BY PROJECT ENGINEER.
U	EXISTING PAVEMENT



050197

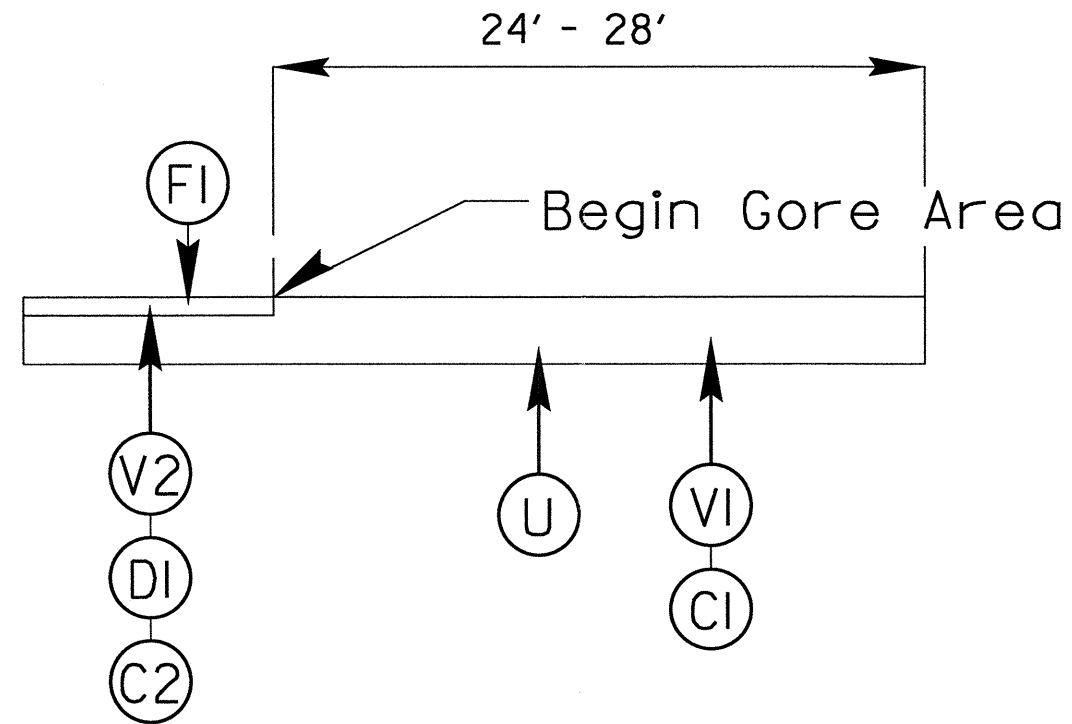
PROJECT REFERENCE NO.		SHEET NO.
I-5322		4
STATE PROJECT	F.A. PROJECT NO.	DESCRIPTION
I-5322		

TYPICAL 1

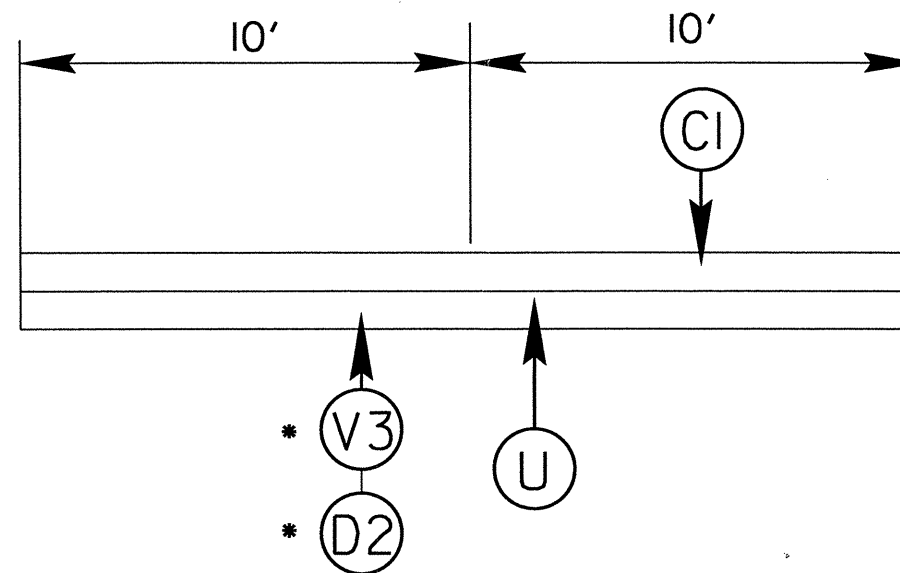


PROJECT REFERENCE NO.		SHEET NO.
I-5322		5
STATE PROJECT	F.A. PROJECT NO.	DESCRIPTION
I-5322		

TYPICAL 2 RAMP TIE IN DETAIL AND RAMP



TYPICAL 3



*** NOTE: MILLING IN DISTRESSED AREAS AS DIRECTED BY PROJECT ENGINEER.**

PROJECT NO.	SHEET NO.	TOTAL NO.
I-5322, 14CR.20441.9	6	

SUMMARY OF QUANTITIES

PROJECT NO	COUNTY	MAP NO	ROUTE	DESCRIPTION	TYP NO	FINAL SURFACE TESTING REQUIRED	LENGTH MI	WIDTH FT	PIPE CLEAN-OUT EA	1 1/2" MILLING SY	3" MILLING SY	4 1/2" MILLING SY	INTERMEDIATE COURSE, I19.0B TONS	INTERMEDIATE COURSE, I19.0D TONS	SURFACE COURSE, S9.5B TONS	SURFACE COURSE, S9.5D TONS
I-5322	Haywood	1	I-40 EAST	FROM MM 14.8 TO MM 20.5	1	YES	5.7	36	10	41,800		86,944		15,594	3,678	8,077
		2	I-40 WEST	FROM MM 14.8 TO MM 20.5	1	YES	5.7	36	10	41,800		86,944		15,594	3,678	8,077
		3	EASTBOUND EXIT RAMP	FROM I-40 EAST TO US 276	2	NO	0.28	24		5,942					602	
		4	WESTBOUND EXIT RAMP	FROM I-40 WEST TO US-276	2	NO	0.15	24		4,112					387	
		5	WESTBOUND ACCESS RAMP	FROM US 276 TO I-40 WEST	2	NO	0.31	24		6,365					698	
		6	WESTBOUND EXIT RAMP	FROM I-40 WEST TO SR-1338	2	NO	0.21	28		5,450					565	
		7	EASTBOND ACCESS RAMP	FROM SR-1338 TO I-40 EAST	2	NO	0.28	24		5,942					602	
TOTAL FOR PROJ NO. C203731							12.63		20	111,411		173,888		31,188	10,210	16,154
14CR.20441.9	Haywood	8	SR-1004	FROM BUNCOMBE COUNTY LINE TO .03 MILES SOUTH OF SR-1603	3	NO	2.91	20			1,557		293		3,117	
TOTAL FOR PROJ NO. 14CR.20441.9							2.91				1,557		293		3,117	
GRAND TOTAL							15.54		20	111,411	1,557	173,888	293	31,188	13,327	16,154

PROJECT NO	COUNTY	MAP NO	ROUTE	DESCRIPTION	TYP NO	FINAL SURFACE TESTING REQUIRED	LENGTH MI	WIDTH FT	ASPHALT CONC SURFACE COURSE, TYPE SF9.5A (LEVELING COURSE) TON	OGAFC, TYPE FC-1 MOD TONS	ASPHALT BINDER FOR PLANT MIX TONS	POLYMER MODIFIED ASPHALT BINDER FOR PLANT MIX TONS	MILLED RUMBLE STRIPS (ASPHALT CEMENT CONCRETE) LF	DRAINAGE STRUCTURE CLEAN-OUT EA	PORTABLE LIGHTING LS	
I-5322	Haywood	1	I-40 EAST	FROM MM 14.8 TO MM 20.5	1	YES	5.7	36		6,084	922	832	60,192	10	1	
		2	I-40 WEST	FROM MM 14.8 TO MM 20.5	1	YES	5.7	36		6,084	922	832	60,192	10		
		3	EASTBOUND EXIT RAMP	FROM I-40 EAST TO US 276	2	NO	0.28	24			36					
		4	WESTBOUND EXIT RAMP	FROM I-40 WEST TO US-276	2	NO	0.15	24			23					
		5	WESTBOUND ACCESS RAMP	FROM US 276 TO I-40 WEST	2	NO	0.31	24			42					
		6	WESTBOUND EXIT RAMP	FROM I-40 WEST TO SR-1338	2	NO	0.21	28			34					
		7	EASTBOND ACCESS RAMP	FROM SR-1338 TO I-40 EAST	2	NO	0.28	24			36					
TOTAL FOR PROJ NO. I-5322							12.63			12,168	2,015	1,664	120,384	20	1	
14CR.20441.9	Haywood	8	SR-1004	FROM BUNCOMBE COUNTY LINE TO .03 MILES SOUTH OF SR-1603	3	NO	2.91	20	1,439		305					
TOTAL FOR PROJ NO. 14CR.20441.9							2.91			1,439	305					
GRAND TOTAL							15.54			1,439	12,168	2,320	1,664	120,384	20	1

PROJECT NO.	SHEET NO.	TOTAL NO.
I-5322, 14CR.20441.9	7	

THERMOPLASTIC AND PAINT QUANTITIES

PROJECT NO	COUNTY	MAP NO	ROUTE	DESCRIPTION	LENGTH	WIDTH	4400000000-E	4405000000-E	4415000000-N	4420000000-N	4430000000-N	4480000000-N	4685000000-E		4688000000-E		4690000000-E	4702000000-E	
							STATIONARY WORK ZONE SIGN SF	PORTABLE WORK ZONE SIGN SF	FLASHING ARROW PANELS, TYPE C EA	CHANGEABLE MESSAGE SIGN EA	DRUMS EA	TMA EA	SKINNY DRUMS EA	4" X 90 M YELLOW THERMO LF	4" X 90 M WHITE THERMO LF	6" X 90 M WHITE THERMO LF	6" X 90 M YELLOW THERMO LF	6" X 120 M WHITE THERMO LF	12" X 120 M WHITE THERMO LF
I-5322	Haywood	1	I-40 EAST	FROM MM 14.8 TO MM 20.5	5.7	36	421	400	2	5	200	2	1,550			31,236	31,236	7,524	518
		2	I-40 WEST	FROM MM 14.8 TO MM 20.5	5.7	36										31,236	37,620	7,524	900
		3	EASTBOUND EXIT RAMP	FROM I-40 EAST TO US 276	0.28	24								737	1,508				
		4	WESTBOUND EXIT RAMP	FROM I-40 WEST TO US-276	0.15	24								300	800				
		5	WESTBOUND ACCESS RAMP	FROM US 276 TO I-40 WEST	0.31	24								775	1,655				
		6	WESTBOUND EXIT RAMP	FROM I-40 WEST TO SR-1338	0.21	28								499	1,125				
		7	EASTBOND ACCESS RAMP	FROM SR-1338 TO I-40 EAST	0.28	24								1,326	1,478				
FOR PROJ NO. C203731					12.63		421	400	2	5	200	2	1,550	3,637	6,566	62,472	68,856	15,048	1,418
														10,203		131,328			
14CR.20441.9	Haywood	8	SR-1004	FROM BUNCOMBE COUNTY LINE TO .03 MILES SOUTH OF SR-1603	2.91	20													
R PROJ NO. 14CR.20441.9					2.91														
GRAND TOTAL					15.54		421	400	2	5	200	2	1,550	3,637	6,566	62,472	68,856	15,048	1,418
														10,203		131,328			

PROJECT NO	COUNTY	MAP NO	ROUTE	DESCRIPTION	LENGTH	WIDTH	4721000000-E				4725000000-E	4810000000-E		4815000000-E		4825000000-E	4835000000-E	4905000000-N	4960000000-N	
							THERMO MSG. NO 120M EA	THERMO MSG. TRUCKS 120M EA	THERMO MSG. THIS 120M EA	THERMO MSG. LANE 120M EA	THERMO STR ARROW 90 M EA	4" WHITE PAINT LF	4" YELLOW PAINT LF	6" WHITE PAINT LF	6" YELLOW PAINT LF	12" WHITE PAINT LF	24" WHITE PAINT LF	SNOW PLOWABLE MARKERS EA	ALUMINUM CORRUGATED BARRIER DELINEATORS EA	
I-5322	Haywood	1	I-40 EAST	FROM MM 14.8 TO MM 20.5	5.7	36	6	18	12	12					45,144	31,680	600		356	75
		2	I-40 WEST	FROM MM 14.8 TO MM 20.5	5.7	36	6	18	12	12					45,144	31,680	600		356	75
		3	EASTBOUND EXIT RAMP	FROM I-40 EAST TO US 276	0.28	24						1,508	737						29	
		4	WESTBOUND EXIT RAMP	FROM I-40 WEST TO US-276	0.15	24						800	300						29	
		5	WESTBOUND ACCESS RAMP	FROM US 276 TO I-40 WEST	0.31	24				3		1,655	775						15	
		6	WESTBOUND EXIT RAMP	FROM I-40 WEST TO SR-1338	0.21	28						1,125	499						29	
		7	EASTBOND ACCESS RAMP	FROM SR-1338 TO I-40 EAST	0.28	24				3		1,326	1,478						29	
TOTAL FOR PROJ NO. C203731					12.63		12	36	24	24	6	6,414	3,789	90,288	63,360	1,200			843	150
								96				10,203		153,648						150
14CR.20441.9	Haywood	8	SR-1004	FROM BUNCOMBE COUNTY LINE TO .03 MILES SOUTH OF SR-1603	2.91	20						62,623	69,142					200	192	
TOTAL FOR PROJ NO. 14CR.20441.9					2.91							62,623	69,142					200	192	0
GRAND TOTAL					15.54		12	36	24	24	6	69,037	72,931	90,288	63,360	1,200	200	1,035	150	
								96				141,968		153,648					150	