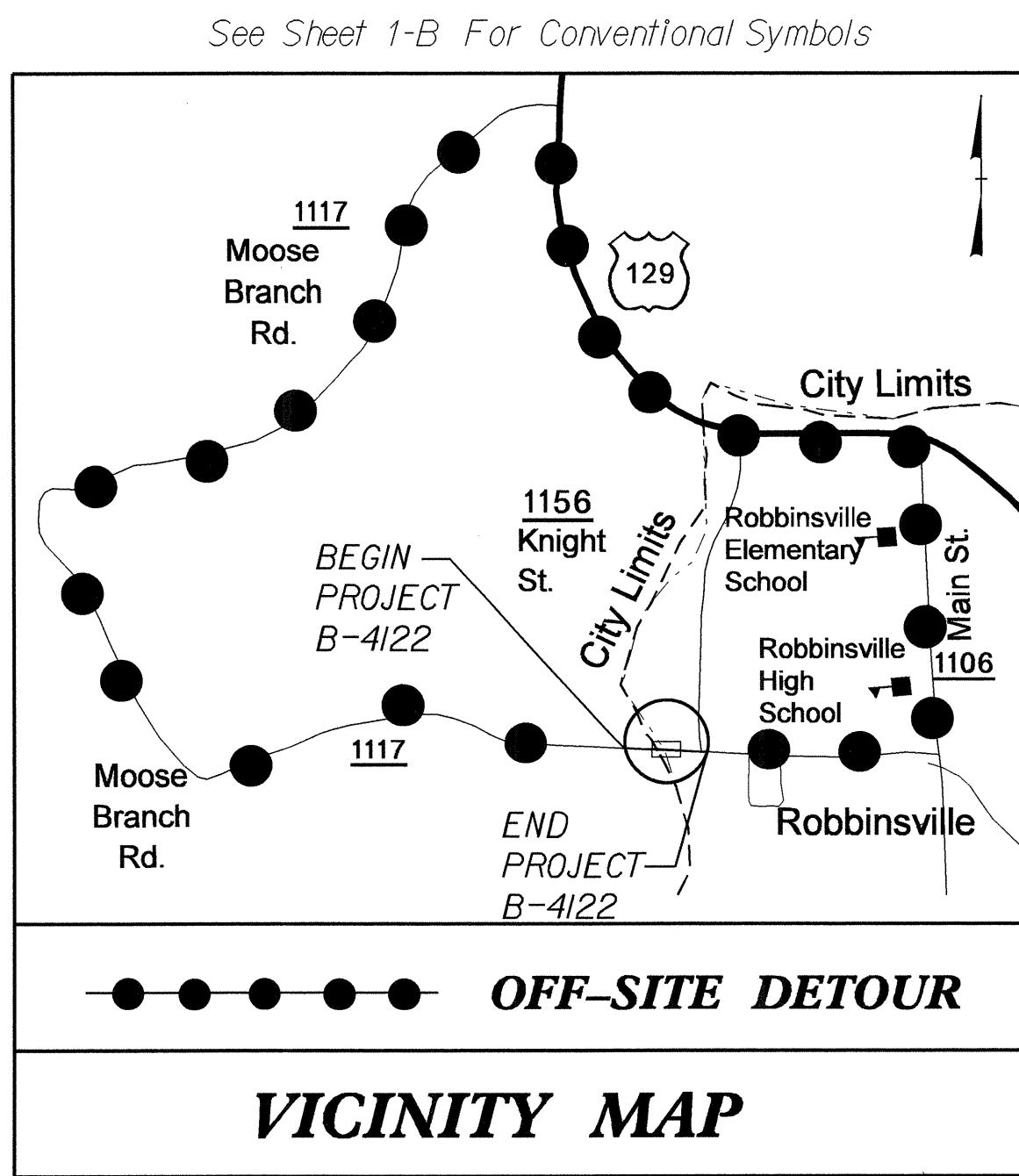


09/08/99

TIP PROJECT: B-4122

T.I.P. NO.	SHEET NO.
B-4122	UO-1

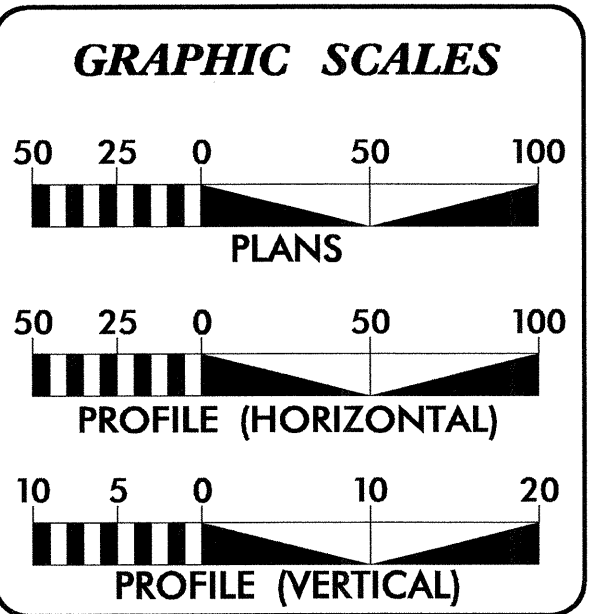
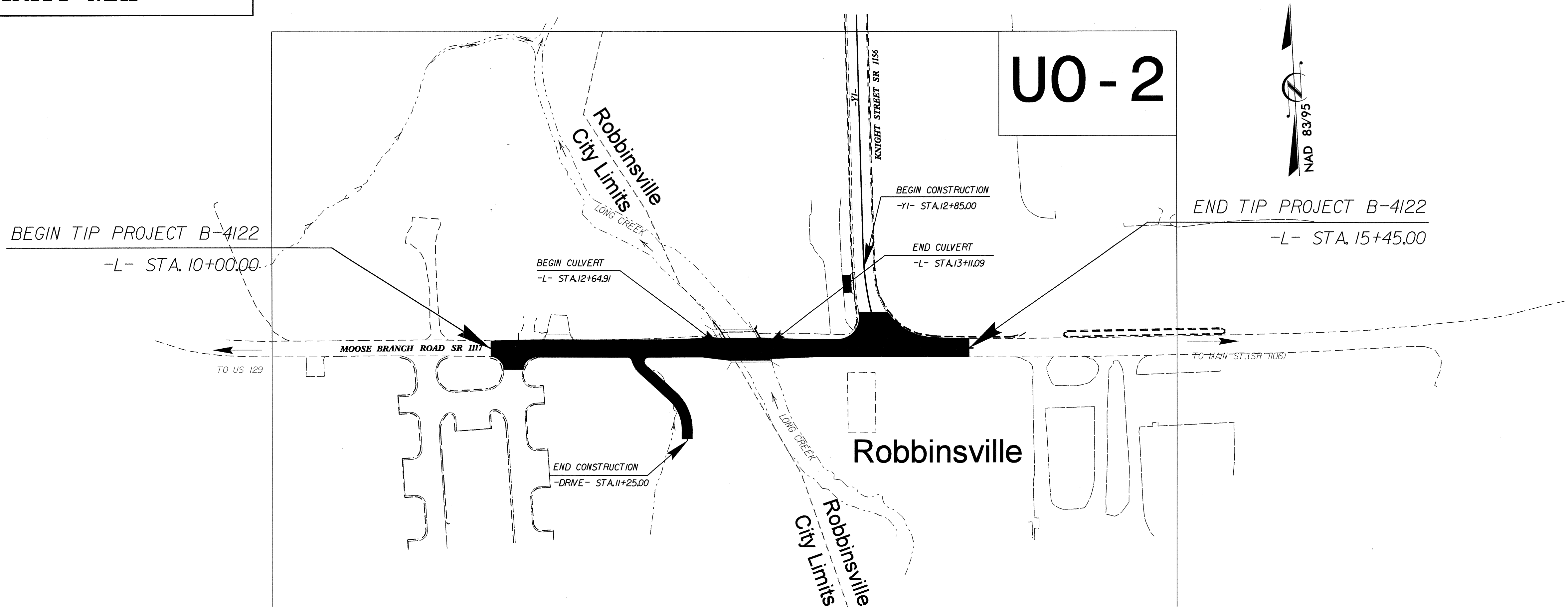


STATE OF NORTH CAROLINA
DIVISION OF HIGHWAYS

**UTILITIES BY OTHERS PLANS
GRAHAM COUNTY**

LOCATION: BRIDGE NO. 81 OVER LONG CREEK ON SR 1117

TYPE OF WORK: WATER, POWER, TELEPHONE, & CABLE



INDEX OF SHEETS

SHEET NO.	DESCRIPTION
UO-1	TITLE SHEET
UO-2	UTILITY BY OTHERS PLAN SHEETS

UTILITY OWNERS ON PROJECT

(1)	POWER: DUKE ENERGY
(2)	WATER: TOWN OF ROBBINSVILLE
(3)	SEWER: TOWN OF ROBBINSVILLE
(3)	CABLE: ZITO MEDIA INC.
(4)	TELEPHONE: FRONTIER COMMUNICATION

PREPARED IN THE OFFICE OF:
DIVISION OF HIGHWAYS
UTILITIES UNIT
UTILITIES ENGINEERING

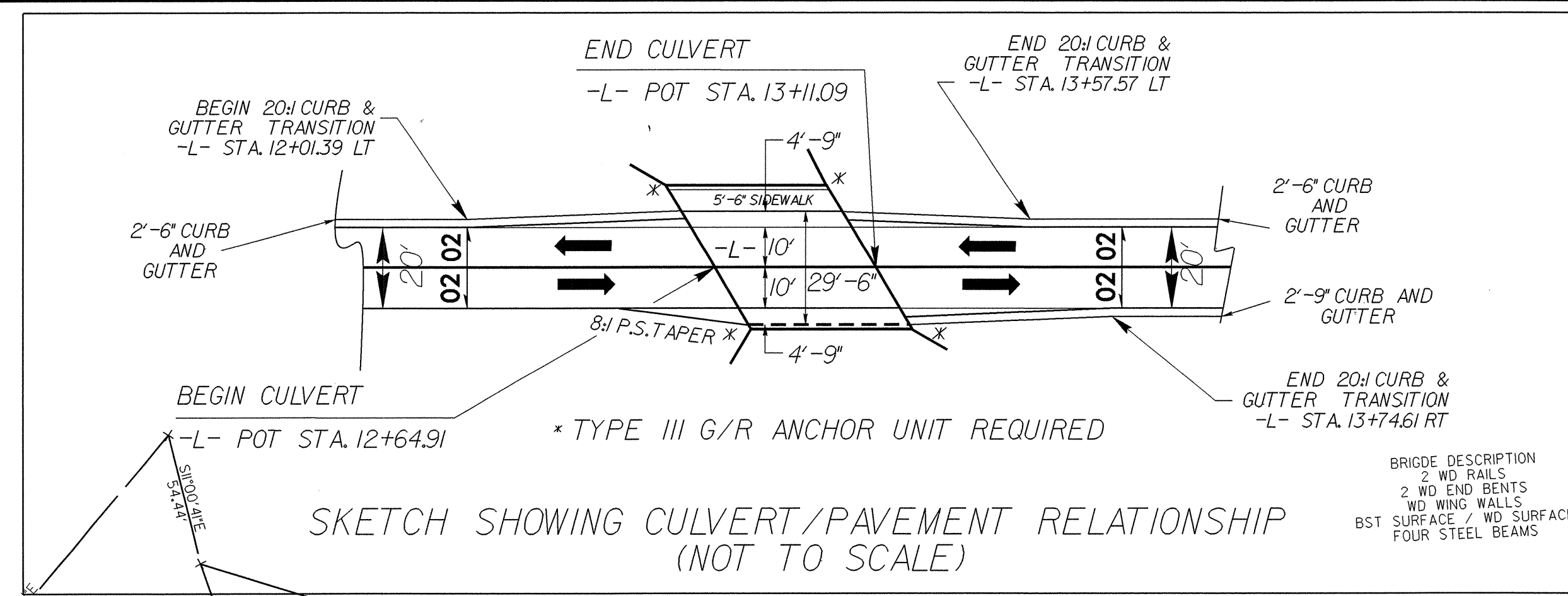
1591 MAIL SERVICES CENTER
RALEIGH NC 27699-1591
PHONE (919) 707-6690
FAX (919) 250-4151

Roger Worthington, P.E. UTILITIES SECTION ENGINEER
Carl Barclay, P.E. UTILITIES SQUAD LEADER PROJECT ENGINEER
Ali Kouchehi, P.E. UTILITIES PROJECT DESIGNER

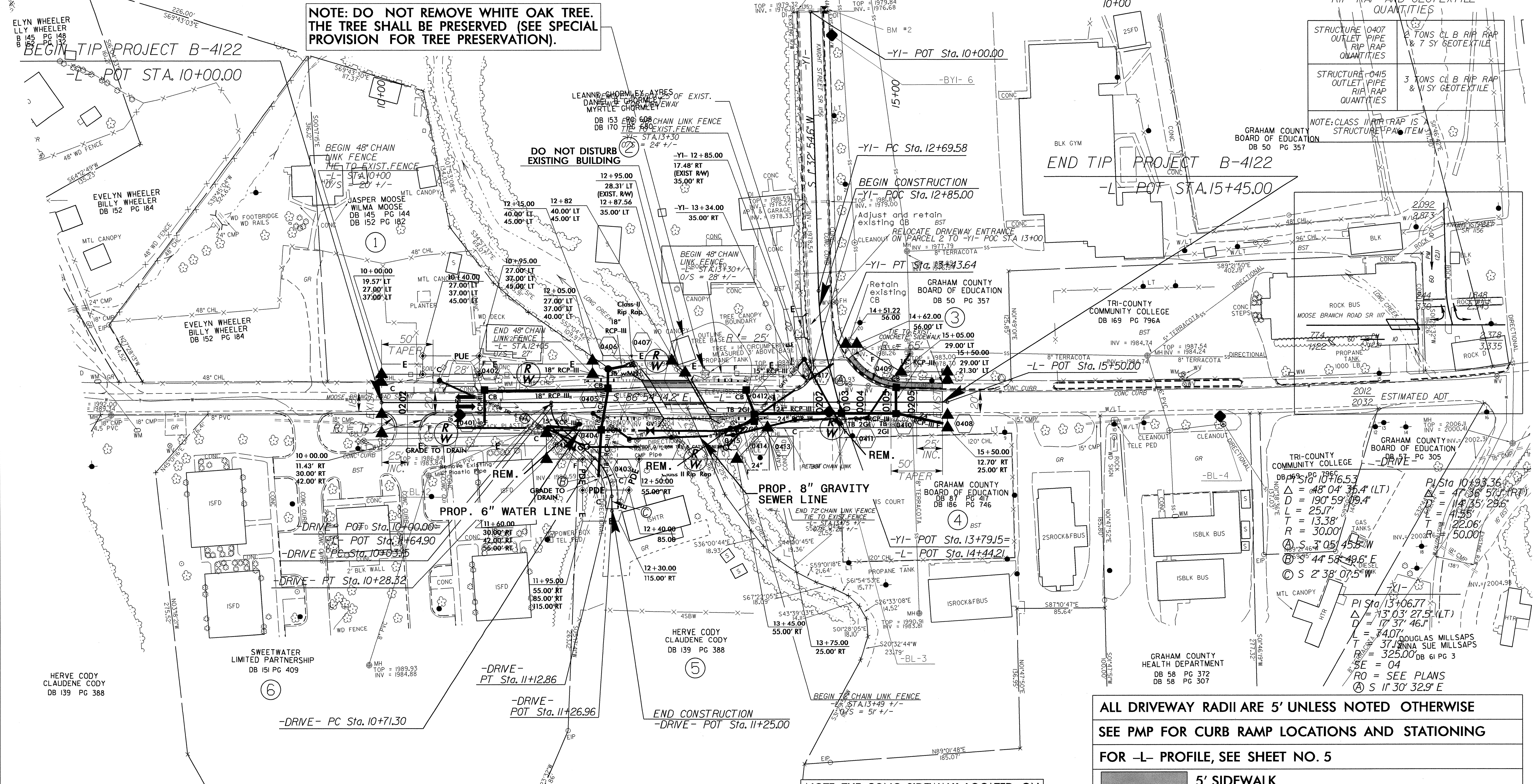
20-SEP-2012 10:59
R:\Utilities\rdy_uth\Proj\B-4122_UT_Title_U01_psh.dgn
\$\$\$\$\$USERNAME\$\$\$\$\$

UTILITIES BY OTHERS

NOTE:
ALL PROPOSED UTILITY WORK
SHOWN ON THIS SHEET WILL
BE DONE BY OTHERS



NOTE: DO NOT REMOVE WHITE OAK TREE.
THE TREE SHALL BE PRESERVED (SEE SPECIAL
PROVISION FOR TREE PRESERVATION).



RIP-RAP AND GEOTEXTILE QUANTITIES

STRUCTURE 0407 OUTLET PIPE RIP RAP QUANTITIES	2 TONS CL B RIP RAP & 7 SY GEOTEXTILE
STRUCTURE 0415 OUTLET PIPE RIP RAP QUANTITIES	3 TONS CL B RIP RAP & 11 SY GEOTEXTILE

NOTE: CLASS III RIP RAP IS A
STRUCTURE PAY ITEM

ALL DRIVEWAY RADII ARE 5' UNLESS NOTED OTHERWISE
SEE PMP FOR CURB RAMP LOCATIONS AND STATIONING
FOR -L- PROFILE, SEE SHEET NO. 5
5' SIDEWALK
FOR CULVERT PLANS, SEE SHEET NO. C-1 THRU C-12

NOTE: USE GRAU 350 TL-2 ANCHOR UNITS PER SUB REGIONAL TIER DESIGN GUIDELINES FOR GUARDRAIL

NOTE: THE CONC. SIDEWALK LOCATED ON
THE CULVERT IS A STRUCTURE PAY ITEM.

REVISIONS
 10 OCT 2021 14:24 P:\o\1\b-4122_rjd\psh.dgn
 10 OCT 2021 14:24 P:\o\1\b-4122_rjd\psh.dgn
 10 OCT 2021 14:24 P:\o\1\b-4122_rjd\psh.dgn