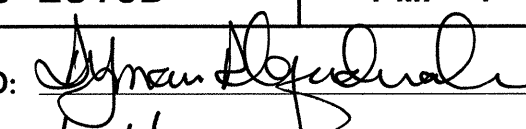



STATE OF NORTH CAROLINA
DEPARTMENT OF TRANSPORTATION

TIP NO.	SHEET NO.
U-2810B	PMP-1
APPROVED: 	
DATE: 8/24/12	
SEAL	
	

PAVEMENT MARKING PLAN
CUMBERLAND COUNTY

LOCATION: SR 1003 (CAMDEN ROAD) FROM HOPE MILLS
BYPASS TO SR 1290 (KING CHARLES ROAD)

T.I.P.: U-2810B

CONTRACT: C202243

ROADWAY STANDARD DRAWING

THE FOLLOWING ROADWAY STANDARDS AS APPEAR IN "ROADWAY STANDARD DRAWINGS" - PROJECT SERVICES UNIT - N.C. DEPARTMENT OF TRANSPORTATION - RALEIGH, N.C., DATED JANUARY 2012 ARE APPLICABLE TO THIS PROJECT AND BY REFERENCE HEREBY ARE CONSIDERED A PART OF THESE PLANS:

STD. NO.	TITLE
1205.01	PAVEMENT MARKINGS - LINE TYPES AND OFFSETS
1205.02	PAVEMENT MARKINGS - 2 LANE AND MULT-ILANE ROADWAYS
1205.04	PAVEMENT MARKINGS - INTERSECTIONS
1205.05	PAVEMENT MARKINGS - TURN LANES
1205.08	PAVEMENT MARKINGS - SYMBOL AND WORD MESSAGES
1205.09	PAVEMENT MARKINGS - PAINTED ISLANDS
1205.13	PAVEMENT MARKINGS - LANE REDUCTIONS
1250.01	RAISED PAVEMENT MARKERS - INSTALLATION SPACING
1251.01	RAISED PAVEMENT MARKERS - PERMANENT AND TEMPORARY
1261.01	GUARDRAIL AND BARRIER DELINEATORS - INSTALLATION SPACING
1261.02	GUARDRAIL AND BARRIER DELINEATORS - TYPES AND MOUNTING
1262.01	GUARDRAIL END DELINEATION

GENERAL NOTES

THE FOLLOWING GENERAL NOTES APPLY AT ALL TIMES FOR THE DURATION OF THE CONSTRUCTION PROJECT, EXCEPT WHEN OTHERWISE NOTED IN THE PLAN, OR DIRECTED BY THE ENGINEER.

- A) INSTALL PAVEMENT MARKINGS AND PAVEMENT MARKERS ON THE FINAL SURFACE AS FOLLOWS:

ROAD NAME	MARKING	MARKER
ALL	THERMOPLASTIC	RAISED
BRIDGE	COLD APPLIED PLASTIC TYPE III	RAISED
- B) TIE PROPOSED PAVEMENT MARKING LINES TO EXISTING PAVEMENT MARKING LINES.
- C) REMOVE/REPLACE ANY CONFLICTING/DAMAGED PAVEMENT MARKINGS AND MARKERS.
- D) PASSING ZONES WILL BE DETERMINED IN THE FIELD AND MUST BE APPROVED BY THE ENGINEER.
- E) STOP BAR LOCATION AT NON-SIGNALIZED INTERSECTIONS MAY BE ADJUSTED AS DIRECTED BY THE ENGINEER.
- F) REMOVE ALL RESIDUE AND SURFACE LAITANCE BY ACCEPTABLE METHODS ON CONCRETE BRIDGE DECKS PRIOR TO PLACING (insert marking material) PAVEMENT MARKING MATERIAL.
- G) UNLESS OTHERWISE SPECIFIED, HEATED-IN-PLACE THERMOPLASTIC MAY BE USED IN LIEU OF EXTRUDED THERMOPLASTIC FOR STOP BARS, SYMBOLS, CHARACTERS AND DIAGONALS. IF HEATED-IN-PLACE IS USED, IT SHALL BE PAID FOR USING THE EXTRUDED THERMOPLASTIC PAY ITEM.
- H) OUTLINE ALL MONOLITHIC CONCRETE ISLANDS WITH 4" YELLOW EDGELINE.

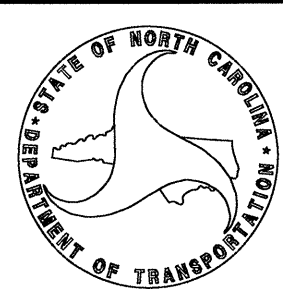
INDEX


SHEET NO.	DESCRIPTION
PMP-1	PAVEMENT MARKING PLAN TITLE AND SCHEDULE SHEET
PMP-2A	CROSSWALK AND STOP BAR PAVEMENT MARKING DETAIL
PMP-2B	PAVEMENT MARKING SCHEDULE
PMP-3-8	PAVEMENT MARKING DETAIL

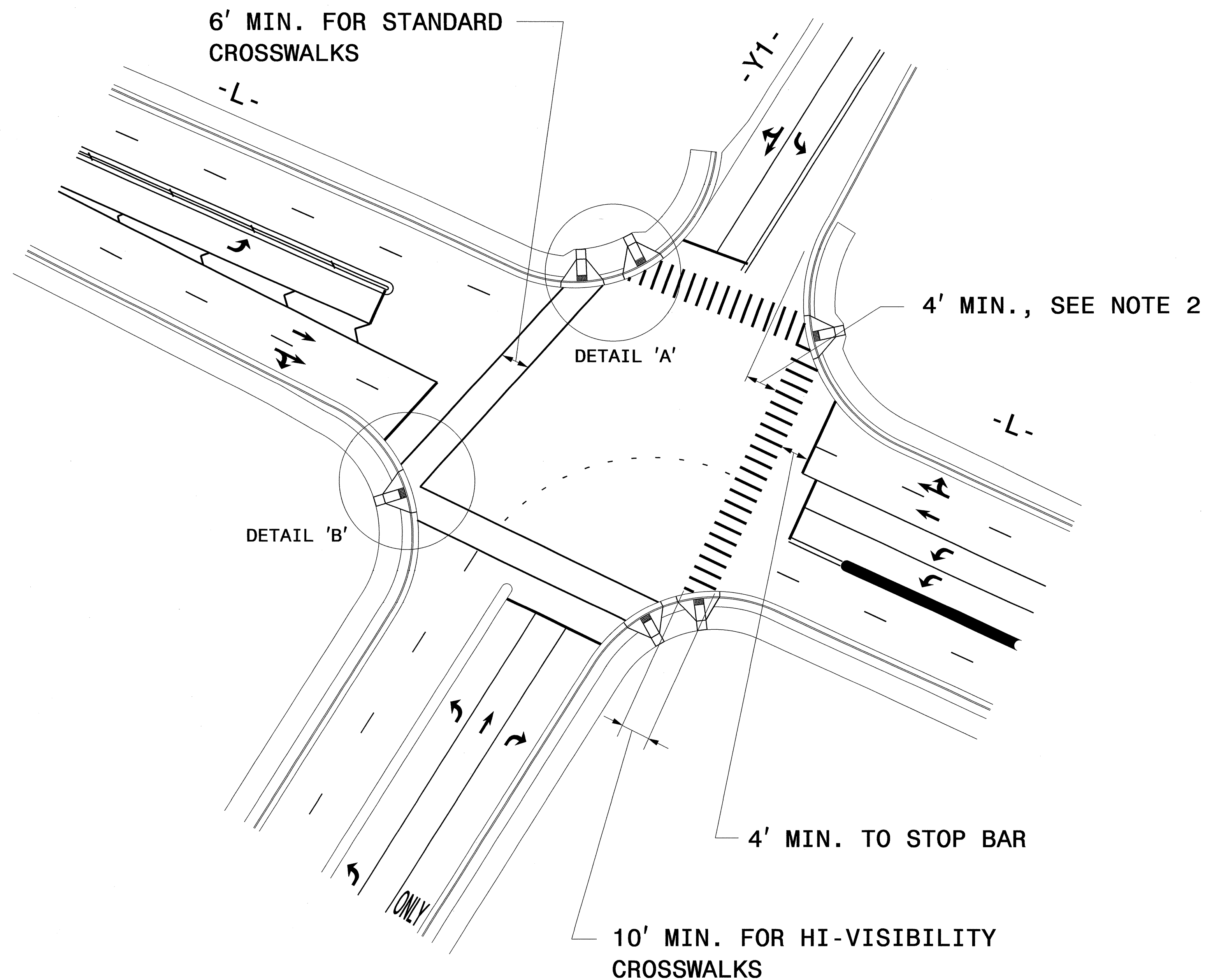
PLAN PREPARED BY: N.C.D.O.T. SIGNING AND DELINEATION UNIT

AYMAN I. ALQUDWAH, P.E. SIGNING & DELINEATION REGIONAL ENGINEER

ERIC WARD SIGNING & DELINEATION DESIGN ENGINEER



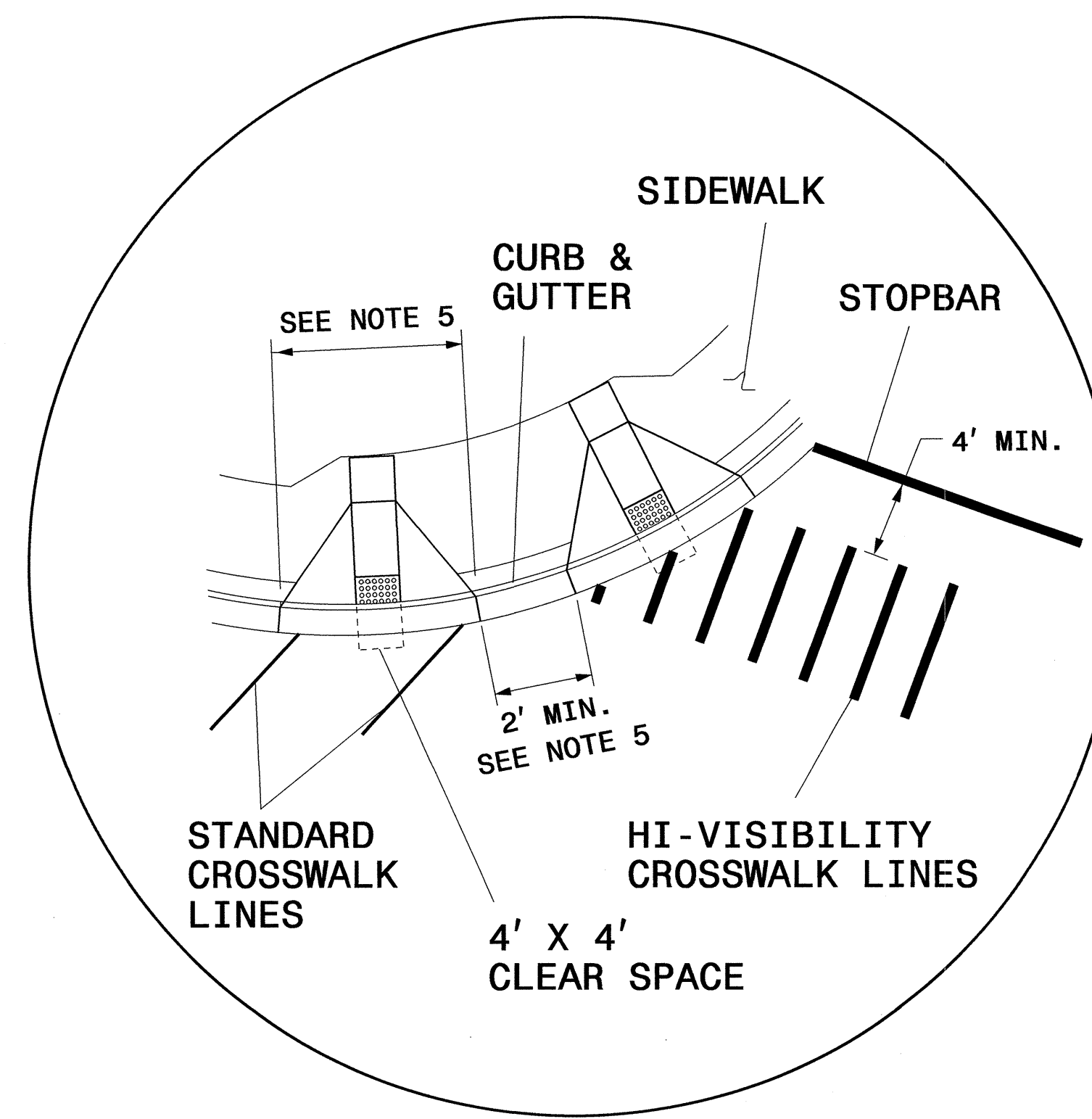
TIP NO. U-2810B	SHEET NO. PMP-2A
APPROVED: <i>[Signature]</i>	
DATE: 8/24/12	
SEAL	
	
REVISIONS	



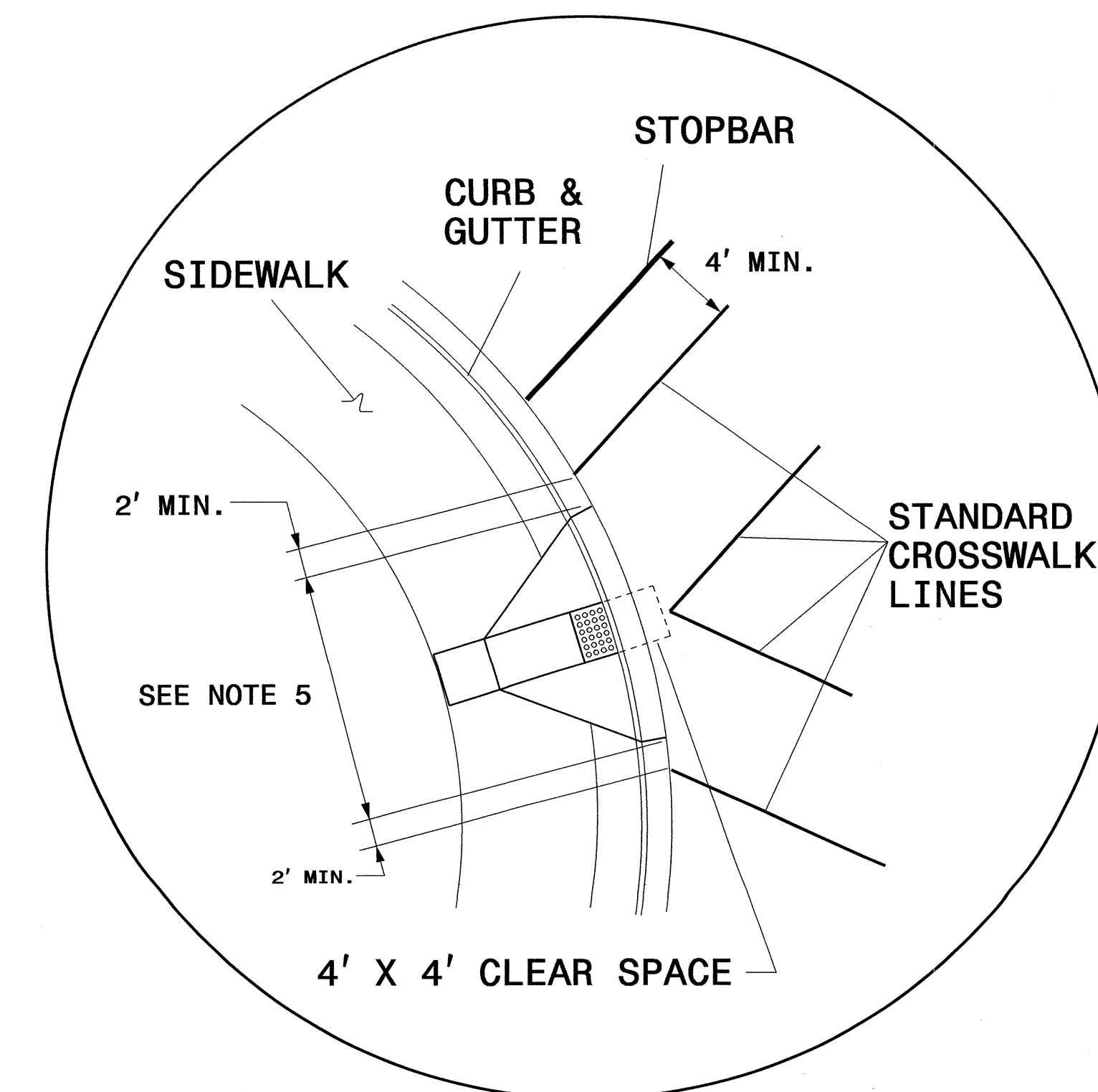
GUIDANCE DETAIL FOR STANDARD AND HI-VISIBILITY CROSSWALKS AT SIGNALIZED OR STOP SIGN CONTROLLED INTERSECTIONS

NOTES:

1. USE DETAILS ABOVE AND THE FOLLOWING NOTES FOR GUIDANCE IN PLACING CROSSWALKS AND STOP BARS NOT STATIONED ON THE DETAIL SHEETS OR WHEN FIELD ADJUSTMENTS REQUIRED MOVING STATIONED MARKINGS AS DIRECTED BY THE ENGINEER. REFER TO NCDOT ROADWAY STANDARD DRAWINGS, MUTCD AND ADA STANDARDS FOR ADDITIONAL GUIDANCE.
2. SET BACK DISTANCE FROM INSIDE CROSSWALK MARKING TO NEAREST EDGE OF TRAVEL IS 4' MIN.
3. BEYOND THE BOTTOM GRADE BRAKE, A CLEAR SPACE OF 4' X 4' MINIMUM SHALL BE PROVIDED WITHIN THE WIDTH OF THE CROSSWALK.
4. SINGLE DIAGONAL CURB RAMPS WITH FLARED SIDES SHALL HAVE A SEGMENT OF CURB 2 FEET LONG MINIMUM LOCATED ON EACH SIDE OF THE CURB RAMP AND WITHIN THE MARKED CROSSING, SEE DETAIL 'B'.
5. CURB RAMPS SHALL BE CONSTRUCTED IN ACCORDANCE TO THE LATEST NCDOT ROADWAY STANDARD DRAWINGS.




DETAIL 'A'- DUAL CURB RAMPS



DETAIL 'B'- SINGLE DIAGONAL CURB RAMP


CROSSWALK AND STOP BAR PAVEMENT MARKING DETAIL

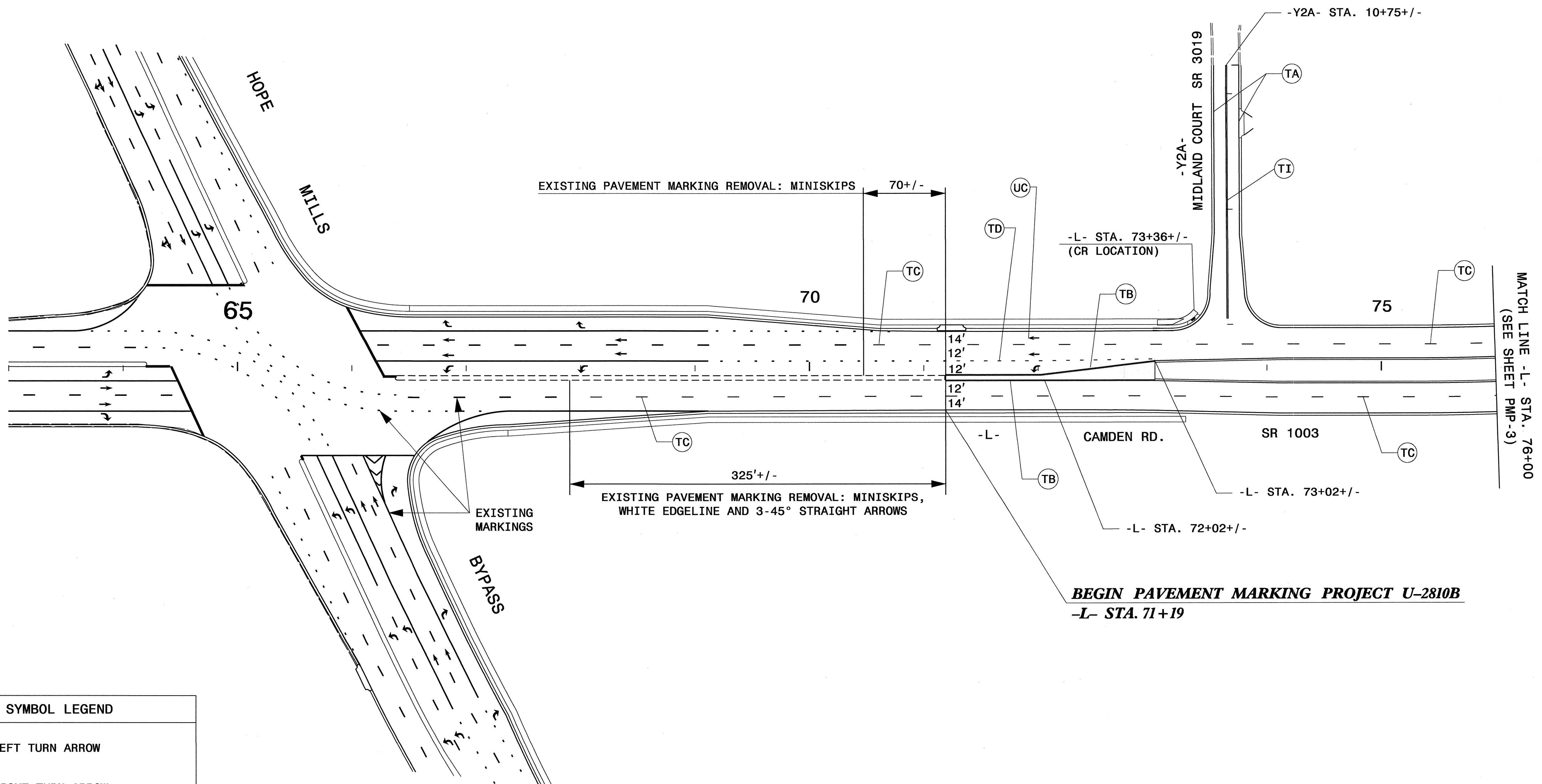
TIP NO.	SHEET NO.
U-2810B	PMP-2B
APPROVED: <i>[Signature]</i>	
DATE: 8/24/12	
SEAL	
	






PAVEMENT MARKING SCHEDULE

SYMBOL	DESCRIPTION
THERMOPLASTIC (24", 120 MILS)	
T2	WHITE STOPBAR
COLD APPLIED PLASTIC (4") TYPE 3 - PERMANENT WET REFLECTIVE	
CB	YELLOW EDGELINE
CC	10 FT. WHITE SKIP
THERMOPLASTIC (4", 120 MILS)	
T8	2 FT. - 8 FT./SP WHITE MINISKIP
T9	2 FT. - 8 FT./SP YELLOW MINISKIP
TC	10 FT. WHITE SKIP
TD	3 FT. - 9 FT./SP WHITE MINISKIP
TE	WHITE SOLID LANE LINE
TI	YELLOW DOUBLE CENTER
THERMOPLASTIC (4", 90 MILS)	
TA	WHITE EDGELINE
TB	YELLOW EDGELINE
THERMOPLASTIC (8", 90 MILS)	
TN	WHITE GORELINE
TO	WHITE DIAGONAL
TP	YELLOW DIAGONAL
THERMOPLASTIC PAVEMENT MARKING SYMBOLS (90 MILS)	
UA	LEFT TURN ARROW
UB	RIGHT TURN ARROW
UC	STRAIGHT ARROW
UE	COMBO STRAIGHT/RIGHT ARROW
UT	U-TURN ARROW
UP	MERGE ARROW

PAVEMENT MARKING SCHEDULE

TIP NO. U-2810B	SHEET NO. PMP-3
APPROVED: <i>[Signature]</i>	
DATE: 8/24/12	
SEAL	
	

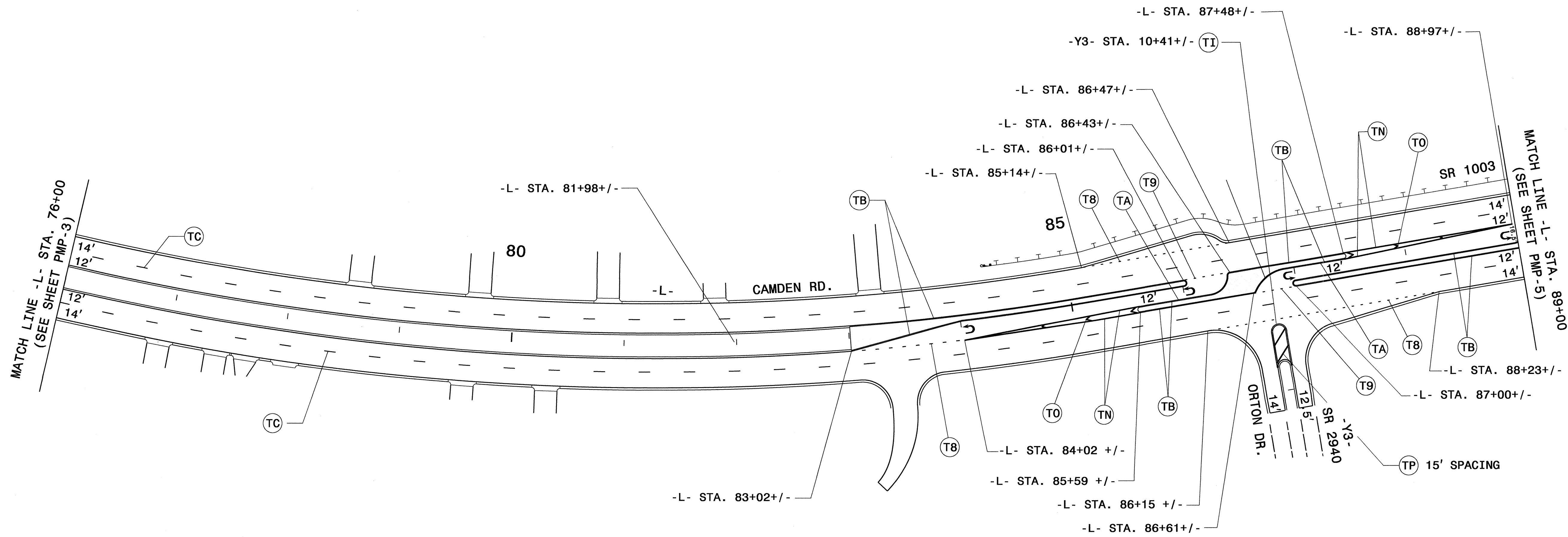


SYMBOL LEGEND	
	UA LEFT TURN ARROW
	UB RIGHT TURN ARROW
	UC STRAIGHT ARROW
	UE COMBO STRAIGHT/RIGHT ARROW
	UT U-TURN ARROW

PAVEMENT MARKING DETAIL

24-AUG-2012 11:17 AM
 U:\U2810B\Traffic\Signing\CADD\PM\U-2810b.tc.pmp_03.dgn
 erleford AL 7247905

TIP NO.	SHEET NO.
U-2810B	PMP-4
APPROVED: <i>[Signature]</i>	
DATE: 8/24/12	
SEAL	

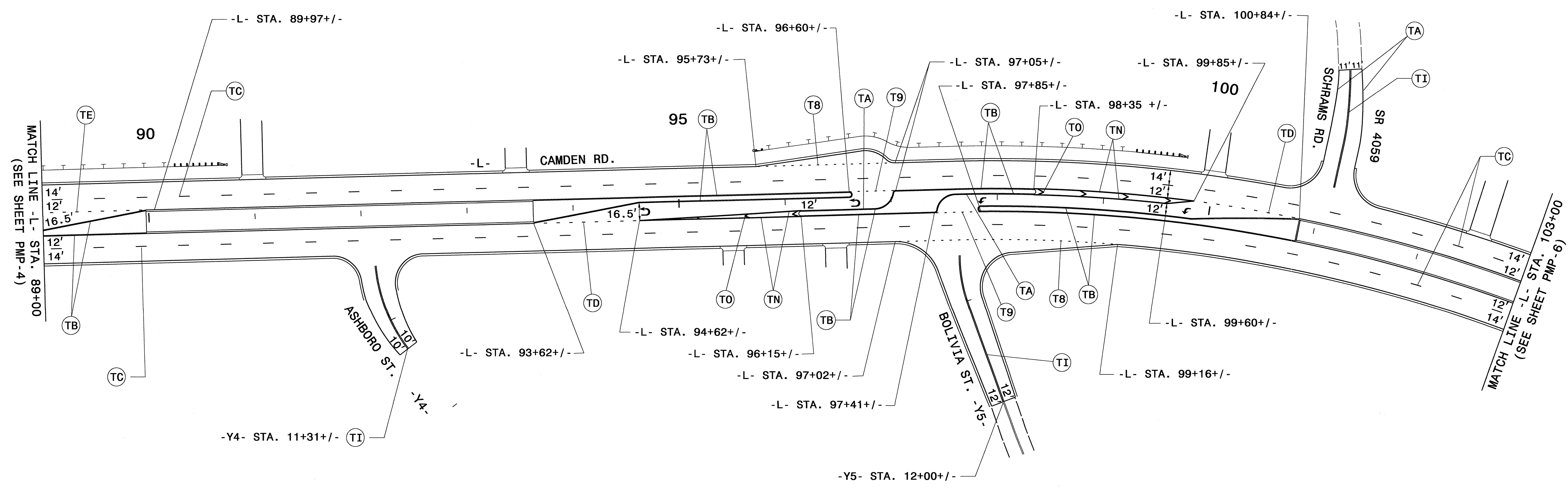
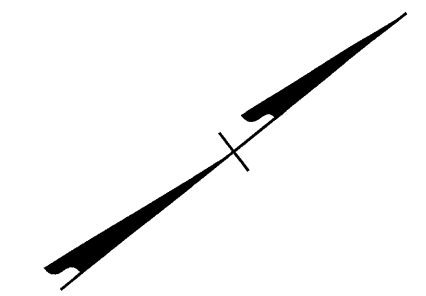


SYMBOL LEGEND	
	(UA) LEFT TURN ARROW
	(UB) RIGHT TURN ARROW
	(UC) STRAIGHT ARROW
	(UE) COMBO STRAIGHT/RIGHT ARROW
	(UT) U-TURN ARROW

PAVEMENT MARKING DETAIL

20-AUG-2012 12:01
 U:\Projects\U-2810B\Traffic\Signing\CADD\PMF\U-2810b.tc.pmp_04.dgn
 ereward AT TE247905

TIP NO. U-2810B	SHEET NO. PMP-5
APPROVED: <i>[Signature]</i>	
DATE: 8/24/12	
SEAL	

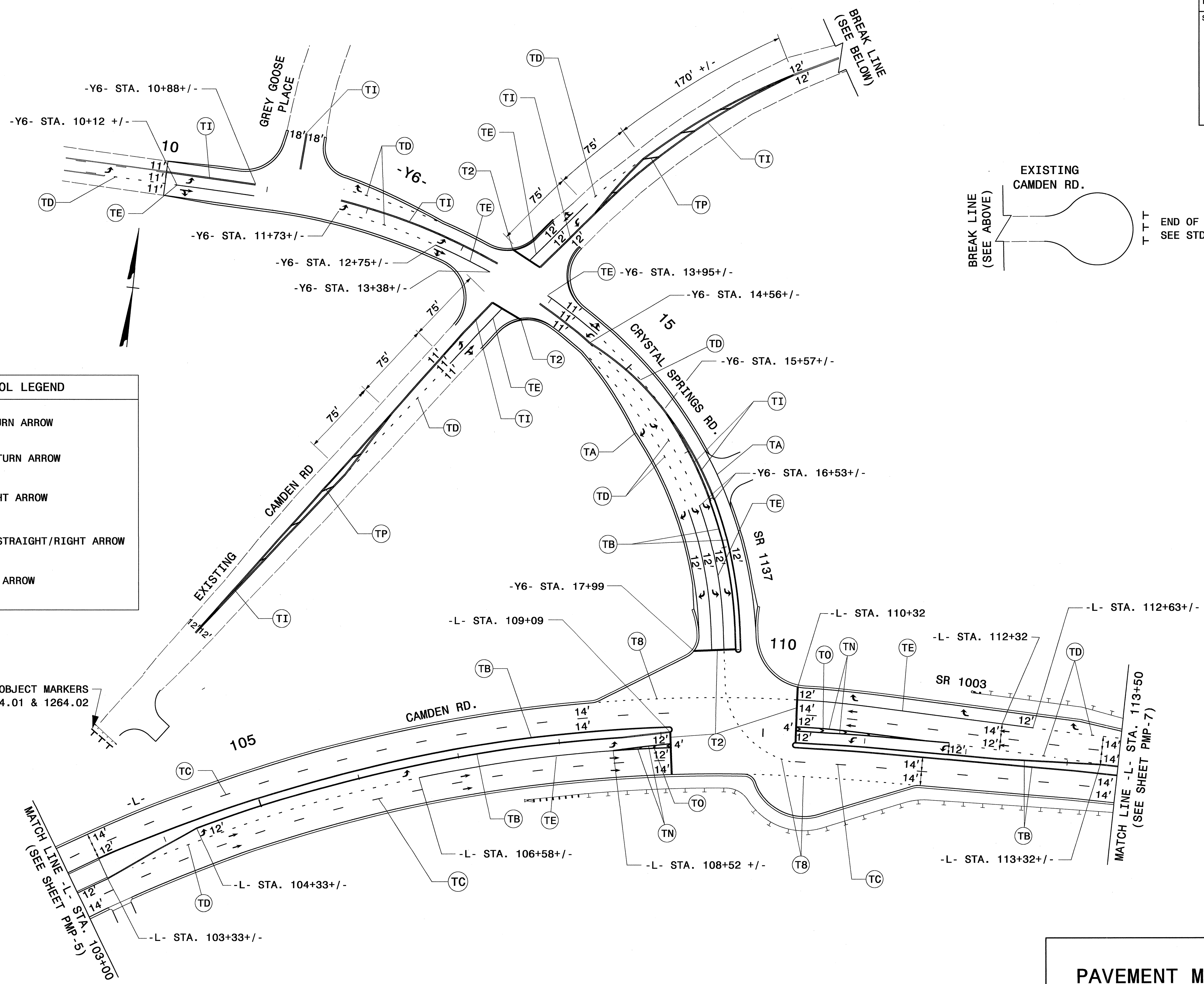


SYMBOL LEGEND	
	LEFT TURN ARROW
	RIGHT TURN ARROW
	STRAIGHT ARROW
	COMBO STRAIGHT/RIGHT ARROW
	U-TURN ARROW

PAVEMENT MARKING DETAIL

20-AUG-2012 13:48
 U:\Projects\U-2810B\Traffic\Signing\CADD\PMF\U-2810b.tc.pmp_05.dgn
 ericward AT 12/24/12

SYMBOL LEGEND	
	UA LEFT TURN ARROW
	UB RIGHT TURN ARROW
	UC STRAIGHT ARROW
	UE COMBO STRAIGHT/RIGHT ARROW
	UT U-TURN ARROW



EXISTING CAMDEN RD.
 BREAK LINE (SEE ABOVE)
 T T T T
 END OF ROAD OBJECT MARKERS
 SEE STD. 1264.01 & 1264.02

END OF ROAD OBJECT MARKERS
 SEE STD. 1264.01 & 1264.02

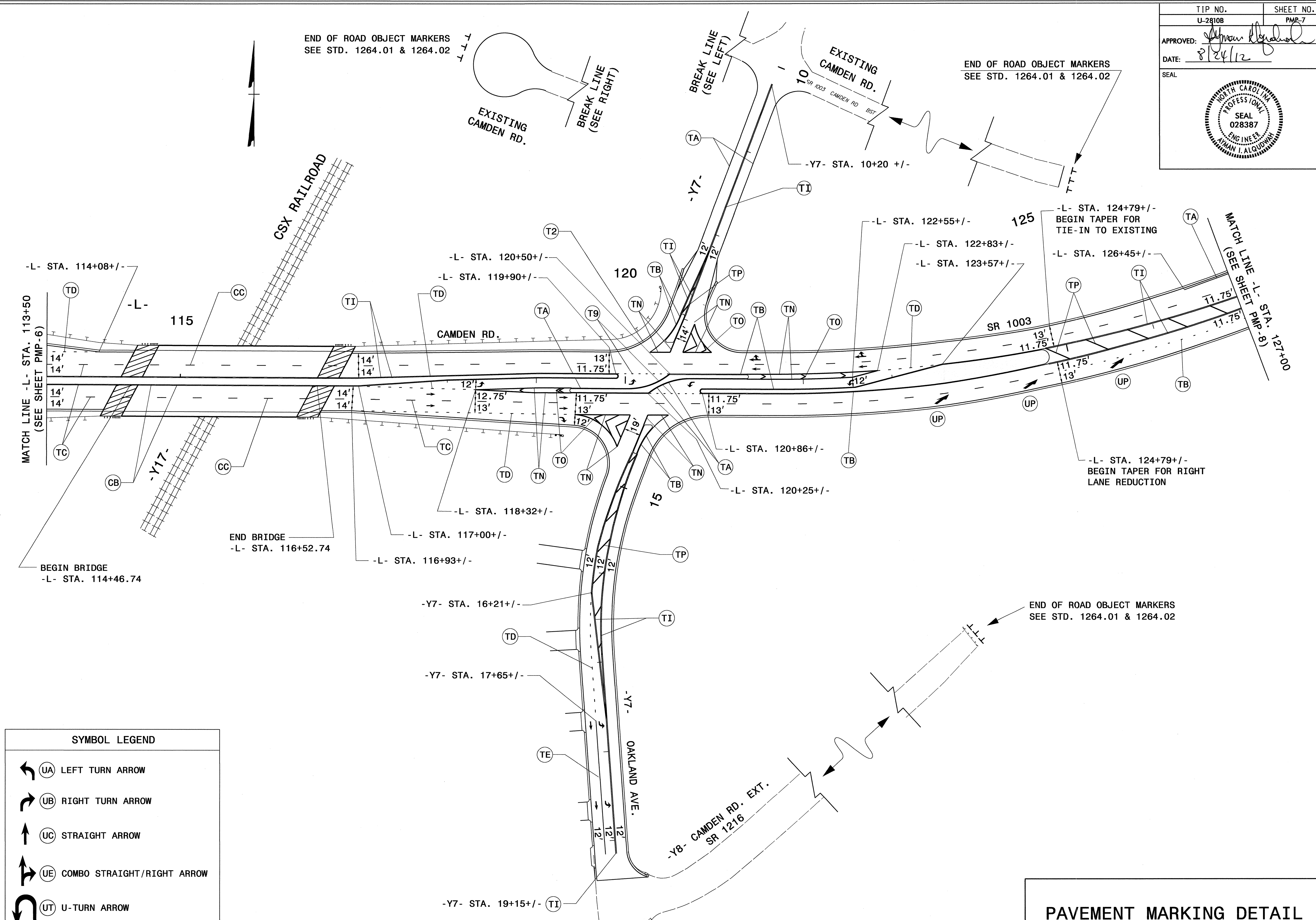
MATCH LINE - L- STA. 103+00
 (SEE SHEET PMP-5)

MATCH LINE - L- STA. 113+50
 (SEE SHEET PMP-7)

PAVEMENT MARKING DETAIL

20-AUG-2012 13:59
 P:\TIP\Projects\U-2810B\Traffic\Signing\CADD\PM\U-2810b.tc.pmp_06.dgn
 ereward AT 1E247905

TIP NO.	SHEET NO.
U-2810B	PME-7
APPROVED: <i>[Signature]</i>	
DATE: 8/24/12	
SEAL	

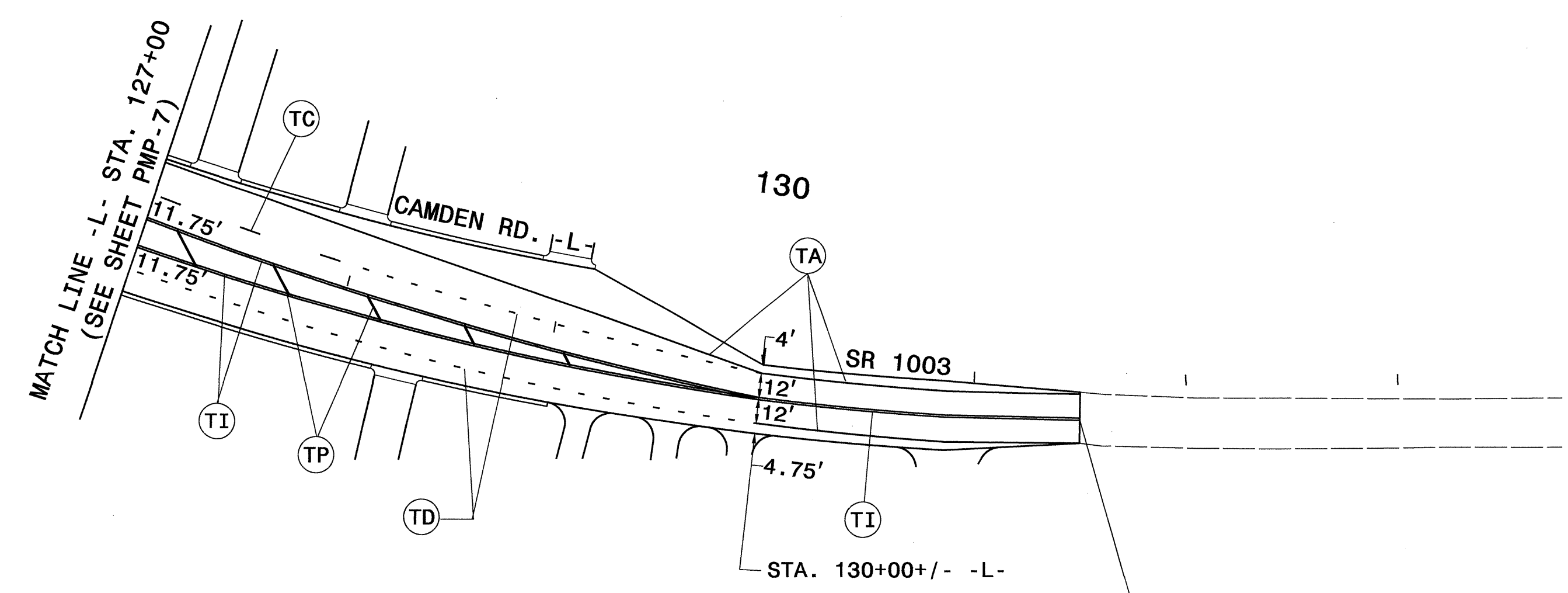


SYMBOL LEGEND	
	(UA) LEFT TURN ARROW
	(UB) RIGHT TURN ARROW
	(UC) STRAIGHT ARROW
	(UE) COMBO STRAIGHT/RIGHT ARROW
	(UT) U-TURN ARROW

PAVEMENT MARKING DETAIL

23 AUG 2012 15:47
 U:\2810B\Traffic\Signing\CADD\PM\U-2810b.tc.pmp_07.dgn
 erikvand AT 12/24/12

TIP NO. U-2810B	SHEET NO. PMP-8
APPROVED: <i>[Signature]</i>	
DATE: 10-2-12	
SEAL	



END PAVEMENT MARKING PROJECT U-2810B
-L- STA. 131+50

SYMBOL LEGEND	
	LEFT TURN ARROW
	RIGHT TURN ARROW
	STRAIGHT ARROW
	COMBO STRAIGHT/RIGHT ARROW
	U-TURN ARROW

PAVEMENT MARKING DETAIL

03-OCT-2012 14:53
 P:\TIP\Projects\U-2810B\Traffic\Signing\CADD\MP\U-2810b_tc_pmp_08.dgn
 ericward AT 11/27/2012