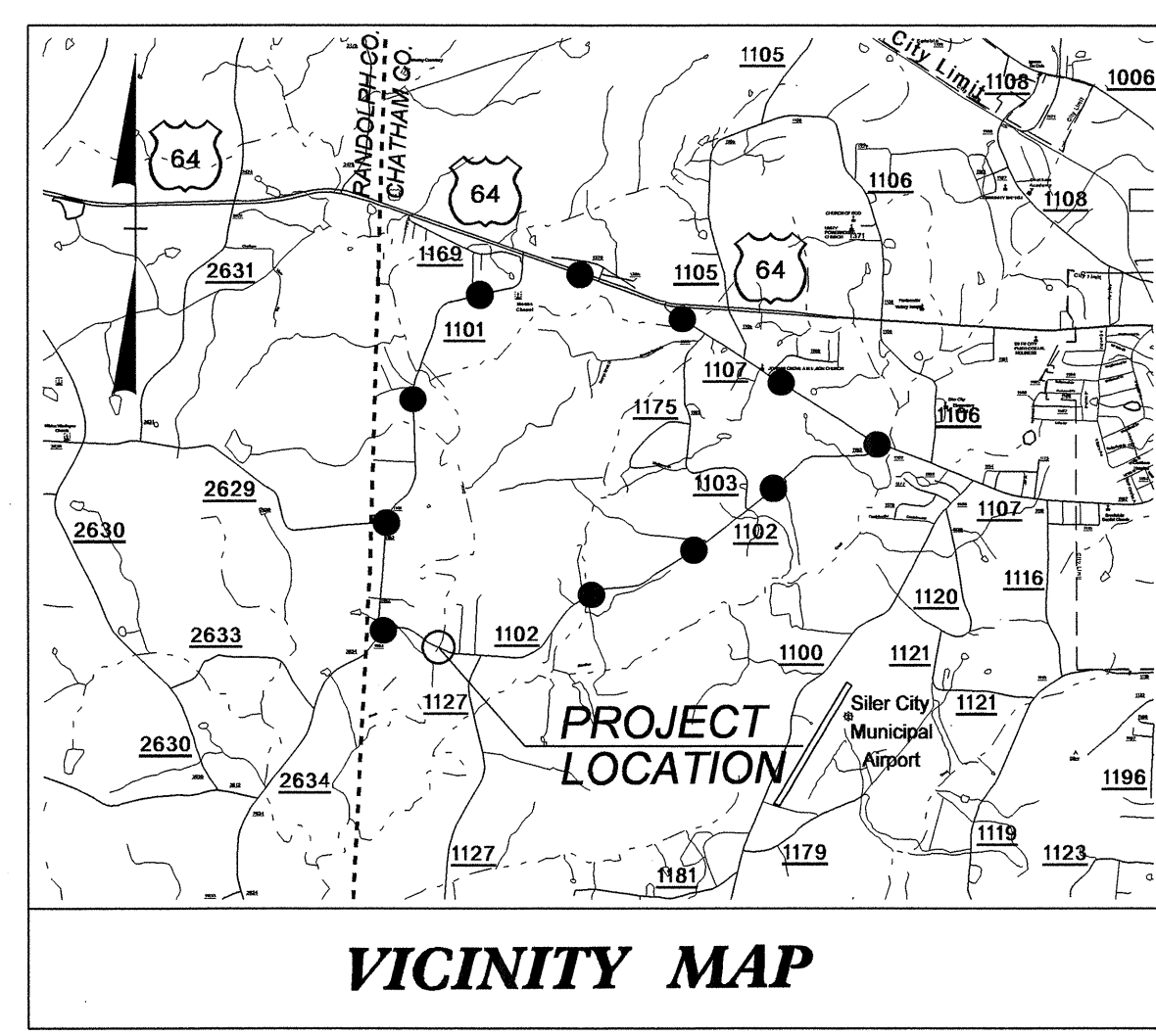


T.I.P. NO.	SHEET NO.
B-4728	UO-1

TIP PROJECT: B-4728



VICINITY MAP

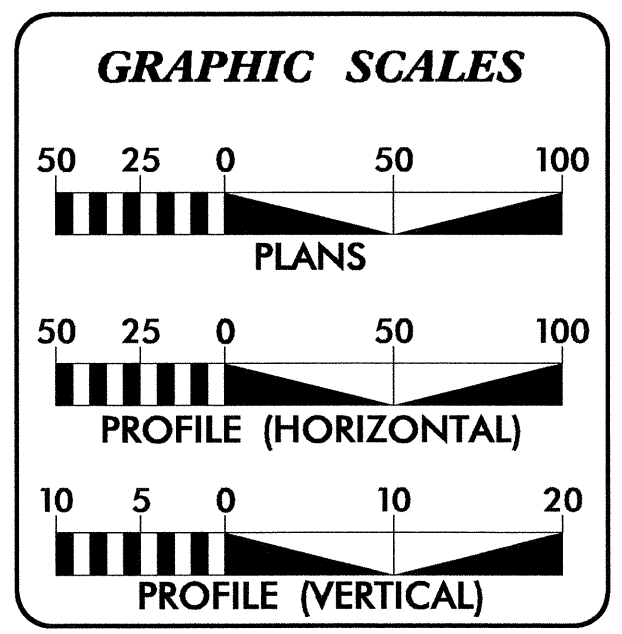
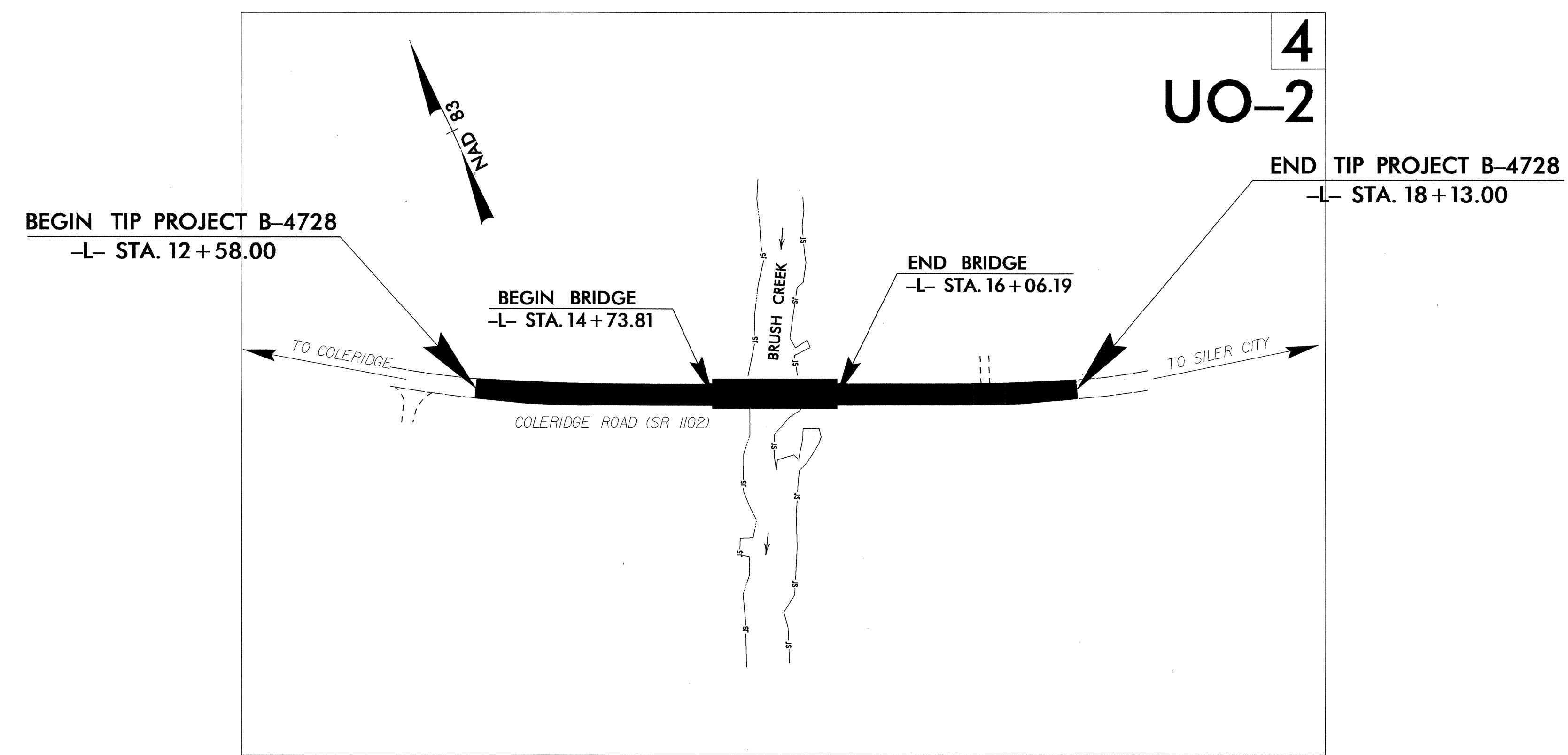
● — OFF-SITE DETOUR ROUTE

STATE OF NORTH CAROLINA
DIVISION OF HIGHWAYS

**UTILITIES BY OTHERS PLANS
CHATHAM COUNTY**

LOCATION: BRIDGE NO. 251 OVER BRUSH CREEK ON SR 1102, COLERIDGE RD.

TYPE OF WORK: UTILITIES BY OTHERS

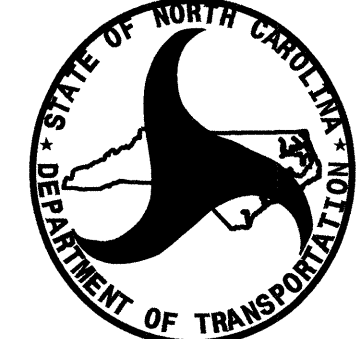


INDEX OF SHEETS

SHEET NO.	DESCRIPTION
UO-1	TITLE SHEET
UO-2	UTILITIES BY OTHERS PLAN SHEET

UTILITY OWNERS ON PROJECT

(A) CENTURYLINK - TELEPHONE



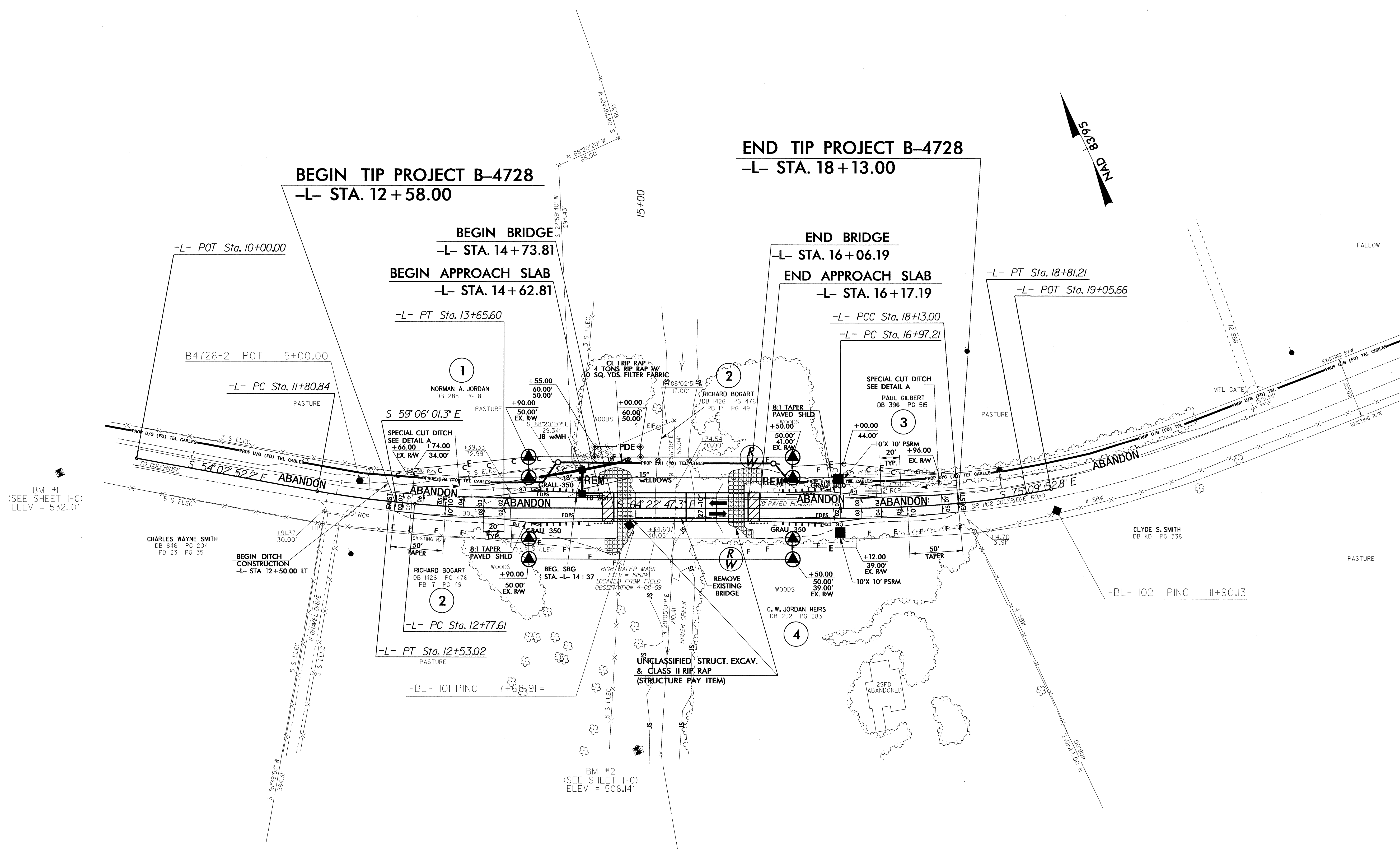
PREPARED IN THE OFFICE OF:
**DIVISION OF HIGHWAYS
UTILITIES UNIT
UTILITIES ENGINEERING**

1591 MAIL SERVICES CENTER
RALEIGH, NC 27699-1591
PHONE (919) 707-6690
FAX (919) 250-4151

Roger Worthington, P.E. UTILITIES SECTION ENGINEER
Steve Mckee, P.E. UTILITIES SQUAD LEADER PROJECT ENGINEER
Keely Lane UTILITIES PROJECT DESIGNER

UTILITIES BY OTHERS

NOTE:
ALL PROPOSED UTILITY WORK
SHOWN ON THIS SHEET WILL
BE DONE BY OTHERS



BM #1
(SEE SHEET I-C)
ELEV = 532.10'

BM #2
(SEE SHEET I-C)
ELEV = 508.14'

5/14/99

29-AUG-2012 11:07 AM
C:\B4728-Ur-4_U02.psh.dgn