

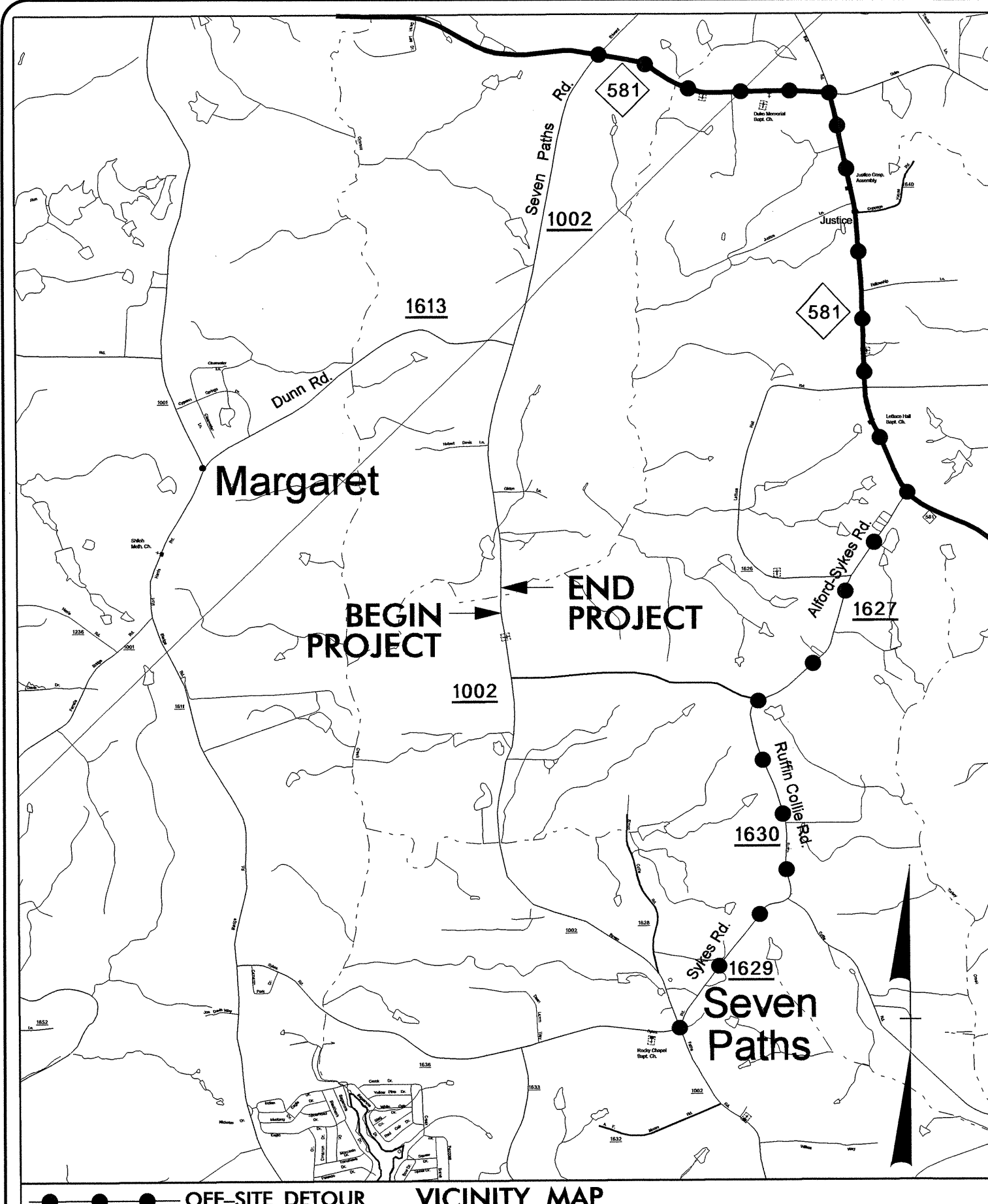
STATE OF NORTH CAROLINA
DIVISION OF HIGHWAYS

**UTILITIES BY OTHERS PLANS
FRANKLIN COUNTY**

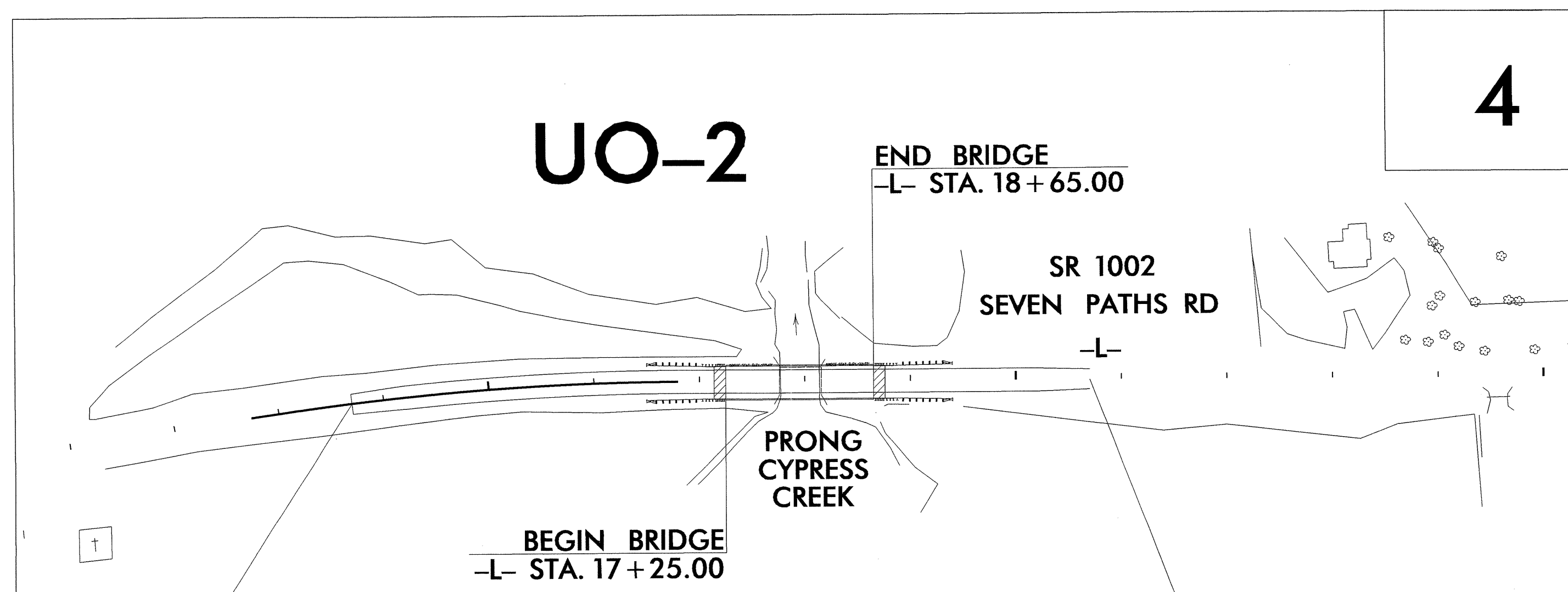
**LOCATION: BRIDGE NO. 73 OVER PRONG CYPRESS CREEK
ON SR 1002 (SEVEN PATHS ROAD)**

TYPE OF WORK: TELEPHONE AND POWER CONSTRUCTION BY OTHERS

TIP PROJECT: B-4513



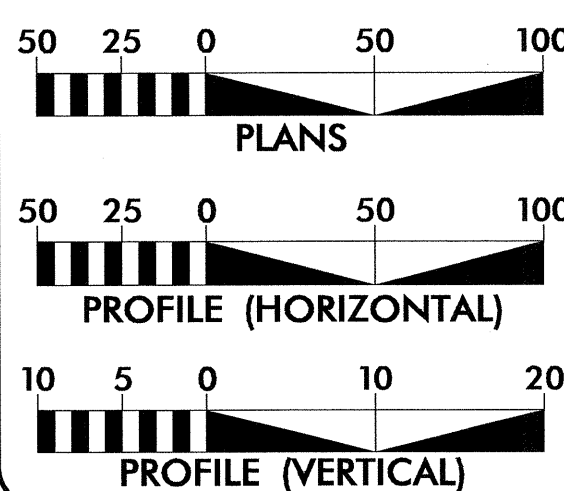
See Sheet 1-A For Index of Sheets
See Sheet 1-B For Conventional Symbols



BEGIN TIP PROJECT B-4513
-L- STA. 13+70.00

END TIP PROJECT B-4513
-L- STA. 20+70.00

GRAPHIC SCALES

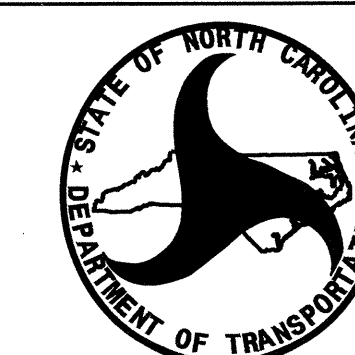


INDEX OF SHEETS

SHEET NO.	DESCRIPTION
UO-1	TITLE SHEET
UO-2	UTILITY BY OTHERS PLAN SHEET

UTILITY OWNERS ON PROJECT

- (A) PROGRESS ENERGY - POWER DISTRIBUTION
- (B) CENTURYLINK - TELEPHONE



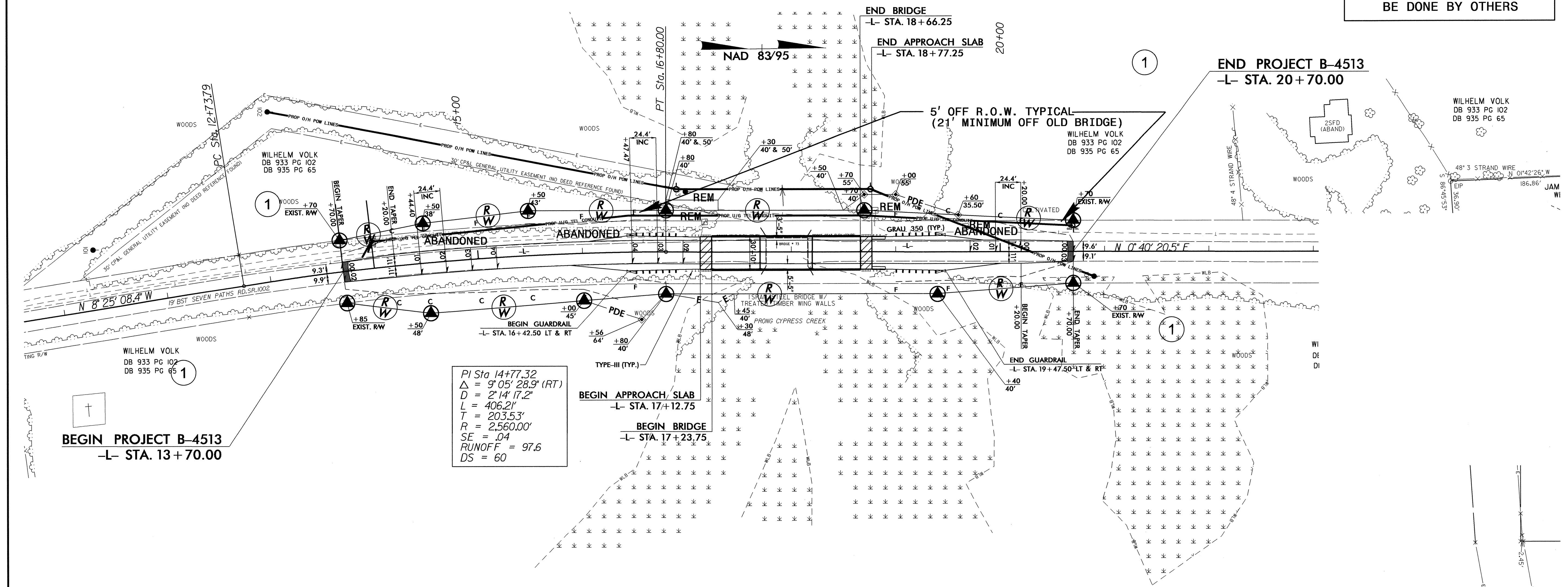
PREPARED IN THE OFFICE OF:
DIVISION OF HIGHWAYS
UTILITIES UNIT
UTILITIES ENGINEERING SECTION

1591 MAIL SERVICES CENTER
RALEIGH NC 27699-1591
PHONE (919) 707-6690
FAX (919) 250-4119

Roger Worthington, P.E. UTILITIES SECTION ENGINEER
Steve McKee, P.E. UTILITIES SQUAD LEADER PROJECT ENGINEER
John Nigro, P.E. UTILITIES PROJECT DESIGNER

UTILITIES BY OTHERS

NOTE:
 ALL PROPOSED UTILITY WORK
 SHOWN ON THIS SHEET WILL
 BE DONE BY OTHERS



BEGIN PROJECT B-4513
 -L- STA. 13+70.00

PI Sta 14+77.32
 $\Delta = 9^{\circ} 05' 28.9''$ (RT)
 $D = 2' 14' 17.2''$
 $L = 406.21'$
 $T = 203.53'$
 $R = 2,560.00'$
 $SE = .04$
 $RUNOFF = 97.6$
 $DS = 60$

5/14/99
 20-JUL-2012 16:28
 R:\Utilities\Projects\B4513-U0-4_U02_psh.dgn