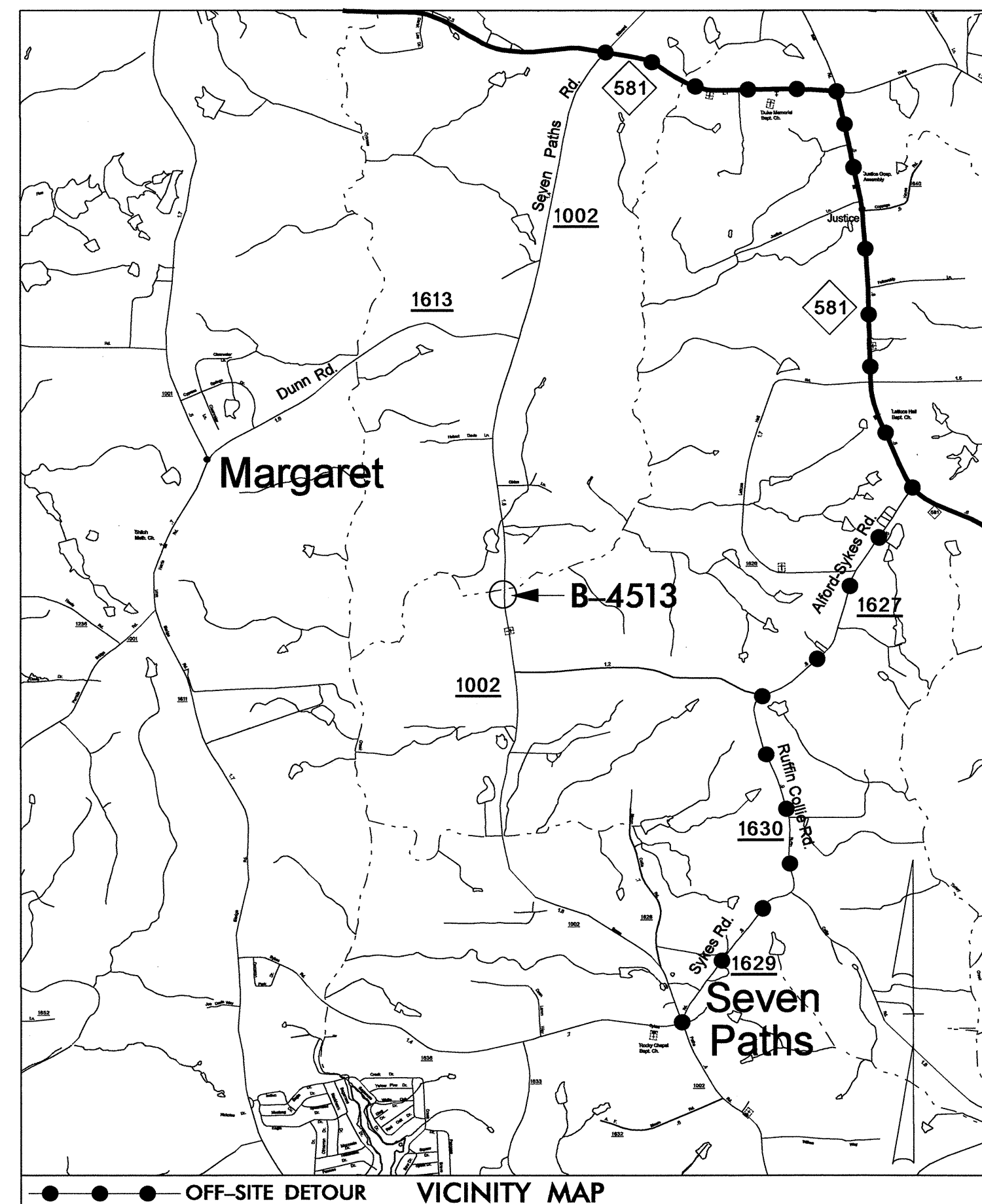
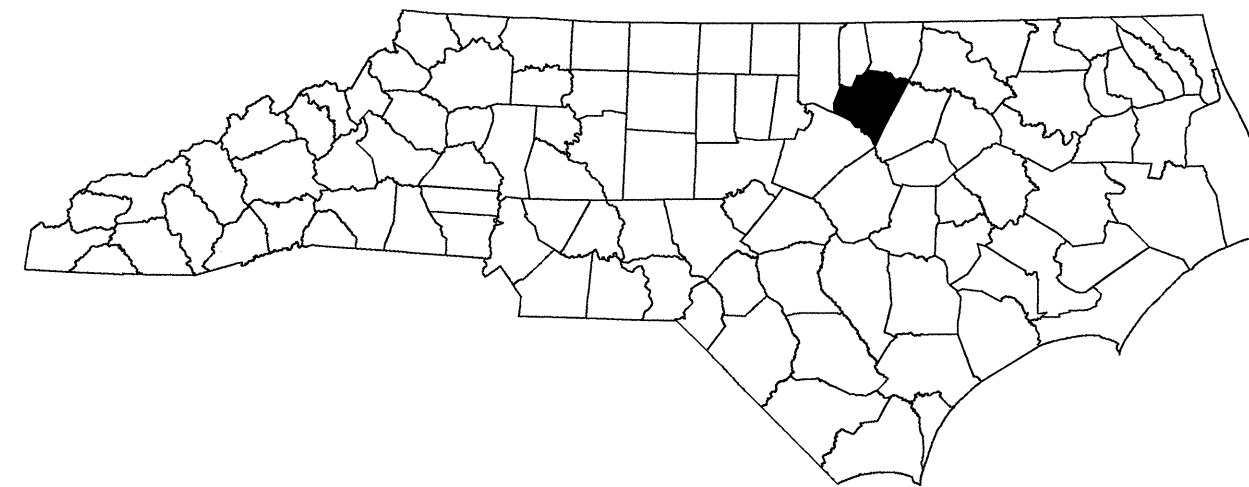


STATE OF NORTH CAROLINA
DIVISION OF HIGHWAYS

TRANSPORTATION MANAGEMENT PLAN

FRANKLIN COUNTY



INDEX OF SHEETS

SHEET NO.	TITLE
TMP-1	TITLE SHEET, AND INDEX OF SHEETS
TMP-1A	LIST OF APPLICABLE ROADWAY STANDARD DRAWINGS AND LEGEND
TMP-1B	TRANSPORTATION OPERATIONS PLAN: (MANAGEMENT STRATEGIES, GENERAL NOTES, AND PHASING)
TMP-2	OFFSITE DETOUR AND BARRICADE PLACEMENT
SD-1	SPECIAL SIGN DESIGN

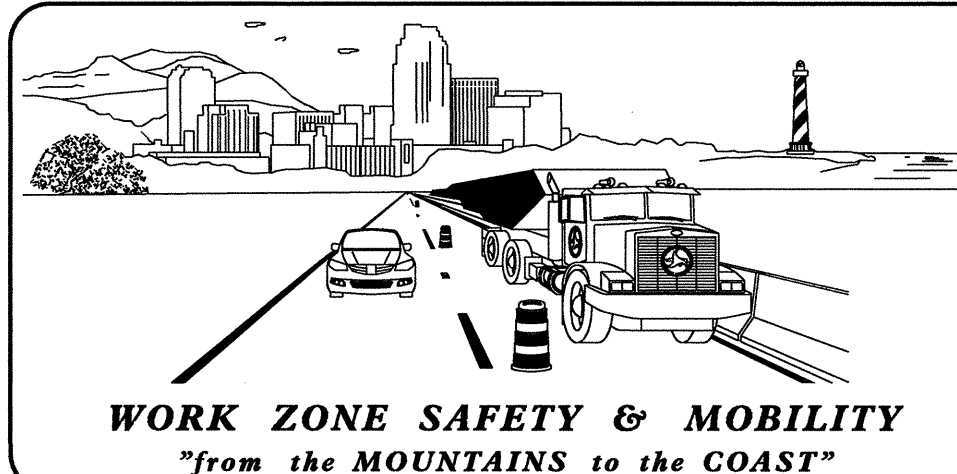
SHEET NO.

TMP-1

B-4513

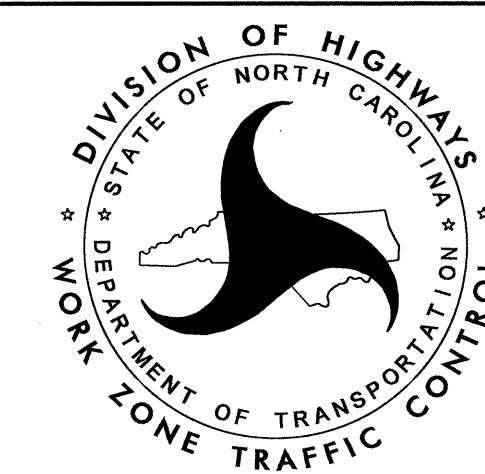
TIP PROJECT:

03-JUL-2012 08:00
V:\dot\dfs\07101\Proj\TIP\Projects-B\B4513\TrafficControl\TCP\B4513_TC_TMP_01.dgn
shossan AT 1E248373



N.C.D.O.T. WORK ZONE TRAFFIC CONTROL
1561 MAIL SERVICE CENTER (MSC) RALEIGH, NC 27699-1561
750 N. GREENFIELD PARKWAY, GARNER, NC 27529 (DELIVERY)
PHONE: (919) 773-2800 FAX: (919) 771-2745

J. S. BOURNE, P.E. STATE TRAFFIC MANAGEMENT ENGINEER
J. ISHAK, P.E. TRAFFIC CONTROL PROJECT ENGINEER
TRAFFIC CONTROL PROJECT DESIGN ENGINEER
S. HASSAN TRAFFIC CONTROL DESIGN ENGINEER



APPROVED: _____
DATE: _____

SEAL

ROADWAY STANDARD DRAWINGS

THE FOLLOWING ROADWAY STANDARDS AS SHOWN IN "ROADWAY STANDARD DRAWINGS" - PROJECT SERVICES UNIT - N.C. DEPARTMENT OF TRANSPORTATION - RALEIGH, N.C., DATED JANUARY 2012 ARE APPLICABLE TO THIS PROJECT AND BY REFERENCE HEREBY ARE CONSIDERED A PART OF THESE PLANS:

STD. NO.	TITLE
1101.03	TEMPORARY ROAD CLOSURES
1101.11	TRAFFIC CONTROL DESIGN TABLES
1110.01	STATIONARY WORK ZONE SIGNS
1145.01	BARRICADES

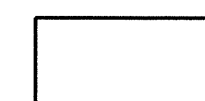
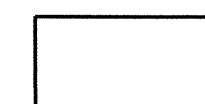
LEGEND

GENERAL

- DIRECTION OF TRAFFIC FLOW
- DIRECTION OF PEDESTRIAN TRAFFIC FLOW
- EXIST. PVMT.
- NORTH ARROW
- PROPOSED PVMT.

WORK AREA

REMOVAL



TRAFFIC CONTROL DEVICES

- BARRICADE (TYPE III)
- CONE
- DRUM SKINNY DRUM TUBULAR MARKER
- TEMPORARY CRASH CUSHION
- FLASHING ARROW BOARD
- FLAGGER
- LAW ENFORCEMENT
- TRUCK MOUNTED ATTENUATOR (TMA)
- CHANGEABLE MESSAGE SIGN

TEMPORARY SIGNING

- PORTABLE SIGN
- STATIONARY SIGN
- STATIONARY OR PORTABLE SIGN

SIGNALS

- EXISTING
- PROPOSED
- TEMPORARY

PAVEMENT MARKINGS

- EXISTING LINES
- TEMPORARY LINES

PAVEMENT MARKERS

- CRYSTAL/CRYSTAL
- CRYSTAL/RED
- YELLOW/YELLOW

PAVEMENT MARKING SYMBOLS

- PAVEMENT MARKING SYMBOLS

TEMPORARY PAVEMENT MARKING

N/A

03-JUL-2012 08:01 \\dot\dfs\proj\IP\Projects-B\4513\TrafficControl\TCP\4513_TC_TMP_01A.dgn shassan AT TE248373

APPROVED:	DATE: 7/7/2012			ROADWAY STANDARD DRAWINGS & LEGEND

MANAGEMENT STRATEGIES

THE FOLLOWING LISTED STRATEGIES DERIVE FROM DETAILED DESIGN LEVEL ASSESSMENTS OF THE WORK ZONE IMPACTS CONDUCTED DURING THE DEVELOPMENTAL STAGES OF THIS TRANSPORTATION MANAGEMENT PLAN (TMP).

RECOMMENDED MANAGEMENT STRATEGIES RELATIVE TO THIS TMP ARE AS FOLLOWS:

-FULL ROAD CLOSURE

TRAFFIC TO BE MAINTAINED ON THE FOLLOWING OFF-SITE DETOUR ROUTE DURING THE DURATION OF THE PROJECT:

NC 581, SR 1627 (ALFORD-SYKES RD), SR 1630 (RUFFIN COLLIE RD), AND SR 1629 (SYKES RD).

PHASING

STEP 1: USING RSD 1101.03, SHEET 1 OF 9; TMP-2; AND SD-1, INSTALL DETOUR SIGNS AND PLACE TYPE III BARRICADES TO CLOSE SR 1002 (SEVEN PATHS RD.) TO THROUGH TRAFFIC. PLACE TRAFFIC ONTO PROPOSED DETOUR.

STEP 2: AWAY FROM TRAFFIC, COMPLETE THE FOLLOWING:

- 1) REMOVE EXISTING STRUCTURE NO. 73 AND CONSTRUCT PROPOSED STRUCTURE. SEE ROADWAY AND STRUCTURE PLANS.
- 2) CONSTRUCT PROPOSED ROADWAY UP TO AND INCLUDING THE FINAL LAYER OF SURFACE COURSE FROM STA. 13+70 +/- TO -L- STA. 20+70 +/- . SEE ROADWAY PLANS.
- 3) PLACE FINAL PAVEMENT MARKINGS AS SHOWN ON FINAL PAVEMENT MARKING PLANS.

STEP 3: REMOVE ALL WORK ZONE TRAFFIC CONTROL DEVICES AND OPEN SR 1002 (SEVEN PATHS RD.) TO FINAL TRAFFIC PATTERN.

GENERAL NOTES

CHANGES MAY BE REQUIRED WHEN PHYSICAL DIMENSIONS IN THE DETAIL DRAWINGS, STANDARD DETAILS, AND ROADWAY DETAILS ARE NOT ATTAINABLE TO MEET FIELD CONDITIONS OR RESULT IN DUPLICATE OR UNDESIRED OVERLAPPING OF DEVICES. MODIFICATION MAY INCLUDE: MOVING, SUPPLEMENTING, COVERING, OR REMOVAL OF DEVICES AS DIRECTED BY THE ENGINEER.

THE FOLLOWING GENERAL NOTES APPLY AT ALL TIMES FOR THE DURATION OF THE CONSTRUCTION PROJECT EXCEPT WHEN OTHERWISE NOTED IN THE PLANS OR DIRECTED BY THE ENGINEER.

TRAFFIC PATTERN ALTERATIONS

- A) NOTIFY THE ENGINEER TWENTY ONE (21) CALENDAR DAYS PRIOR TO ANY TRAFFIC PATTERN ALTERATION.

SIGNING

- B) PROVIDE SIGNING AND DEVICES REQUIRED TO CLOSE THE ROAD ACCORDING TO THE ROADWAY STANDARD DRAWINGS AND TRAFFIC CONTROL PLANS.

PROVIDE SIGNING REQUIRED FOR THE OFF-SITE DETOUR ROUTE AS SHOWN IN THE TRAFFIC CONTROL PLANS.

- C) COVER OR REMOVE ALL SIGNS AND DEVICES REQUIRED TO CLOSE THE ROAD WHEN ROAD CLOSURE IS NOT IN OPERATION.

COVER OR REMOVE ALL SIGNS REQUIRED FOR THE OFF-SITE DETOUR WHEN THE DETOUR IS NOT IN OPERATION.

- D) ENSURE ALL NECESSARY SIGNING IS IN PLACE PRIOR TO ALTERING ANY TRAFFIC PATTERN.

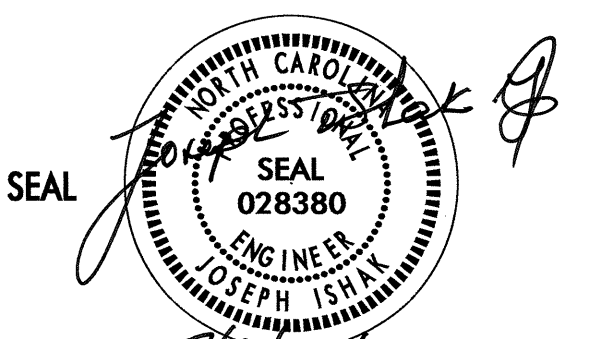
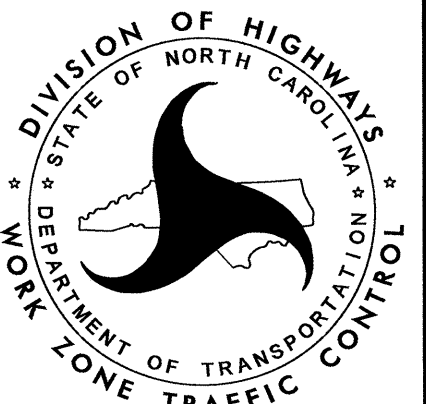
TRAFFIC CONTROL DEVICES

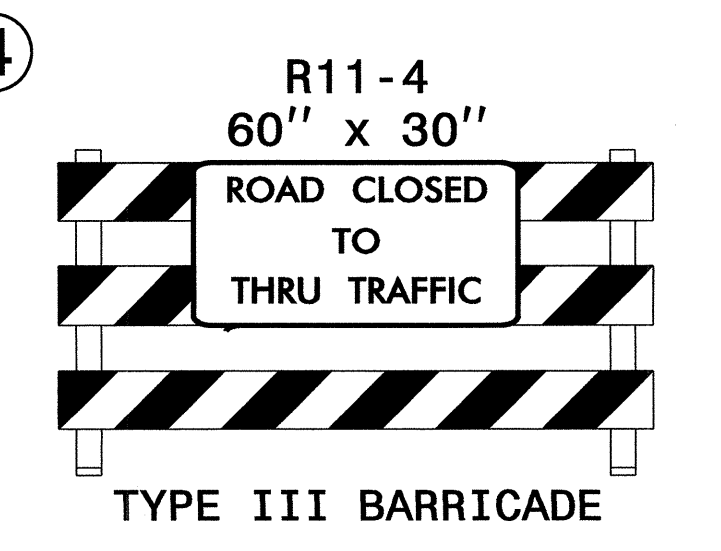
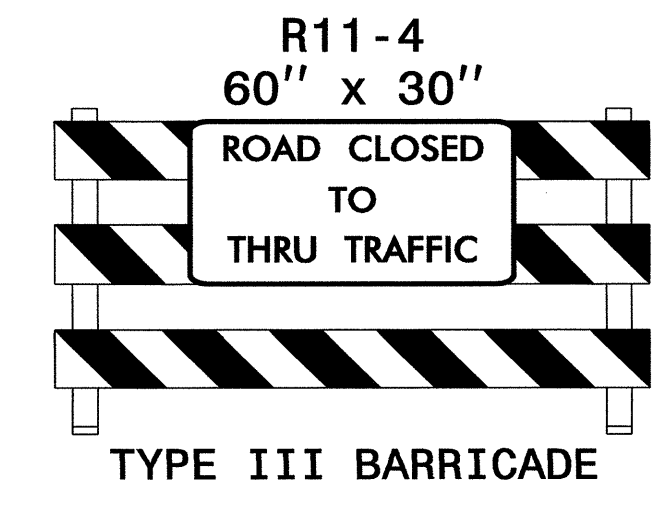
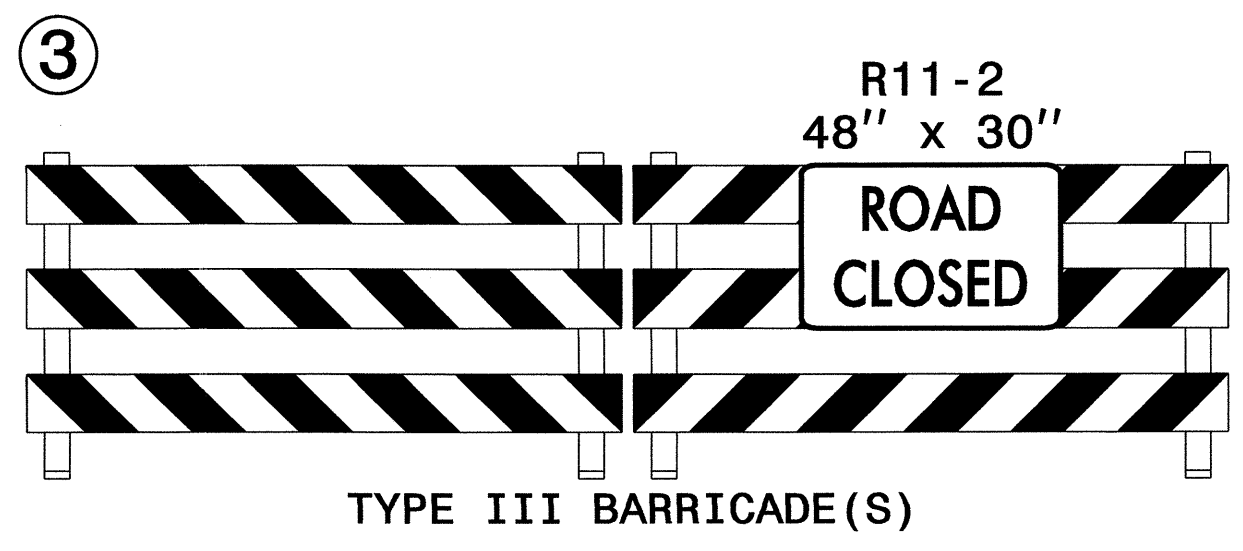
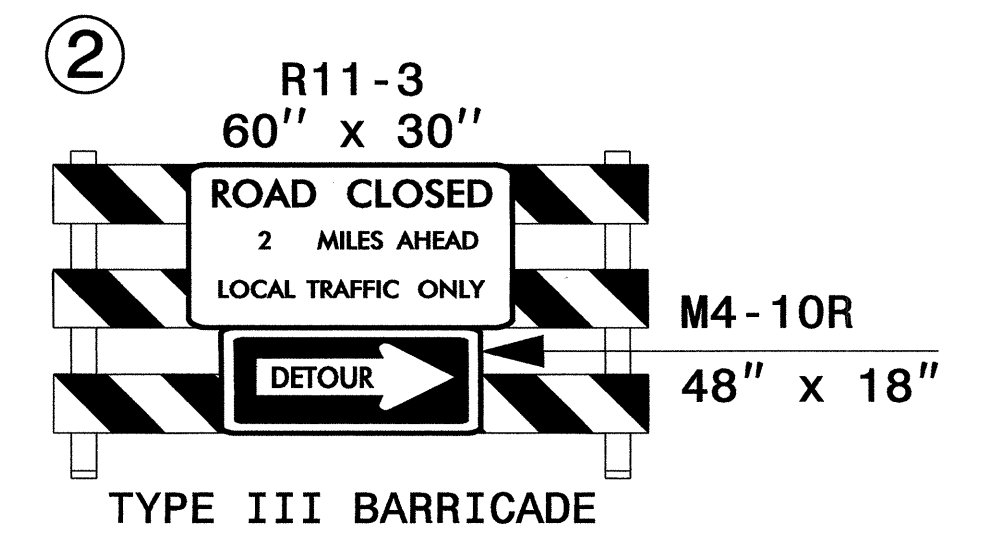
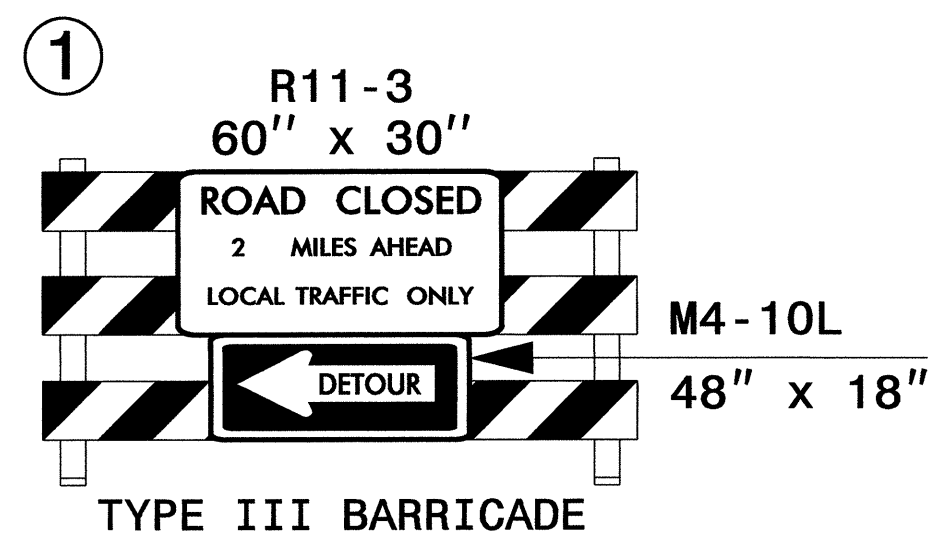
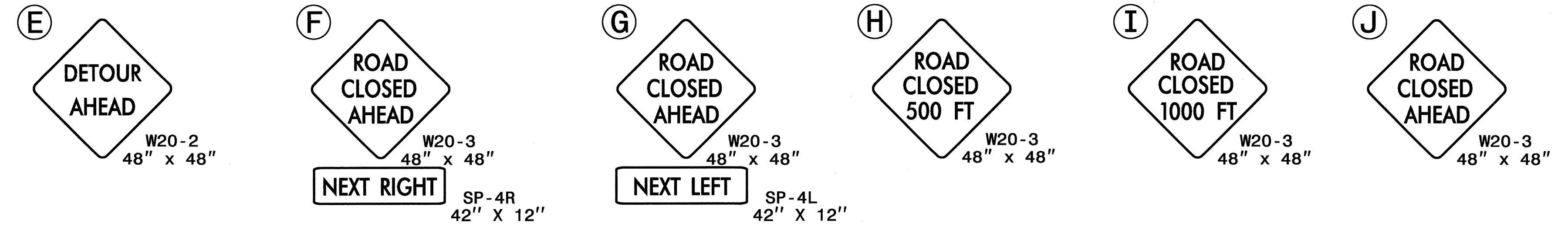
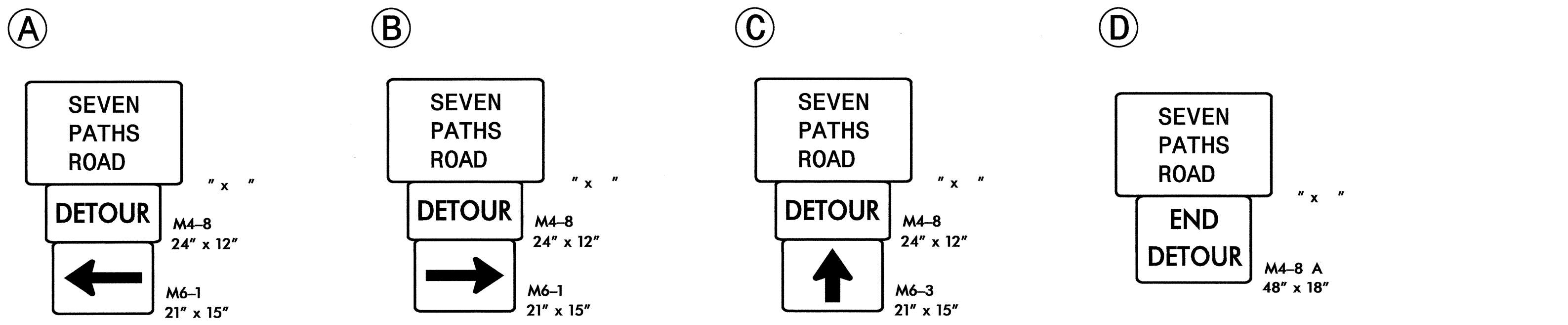
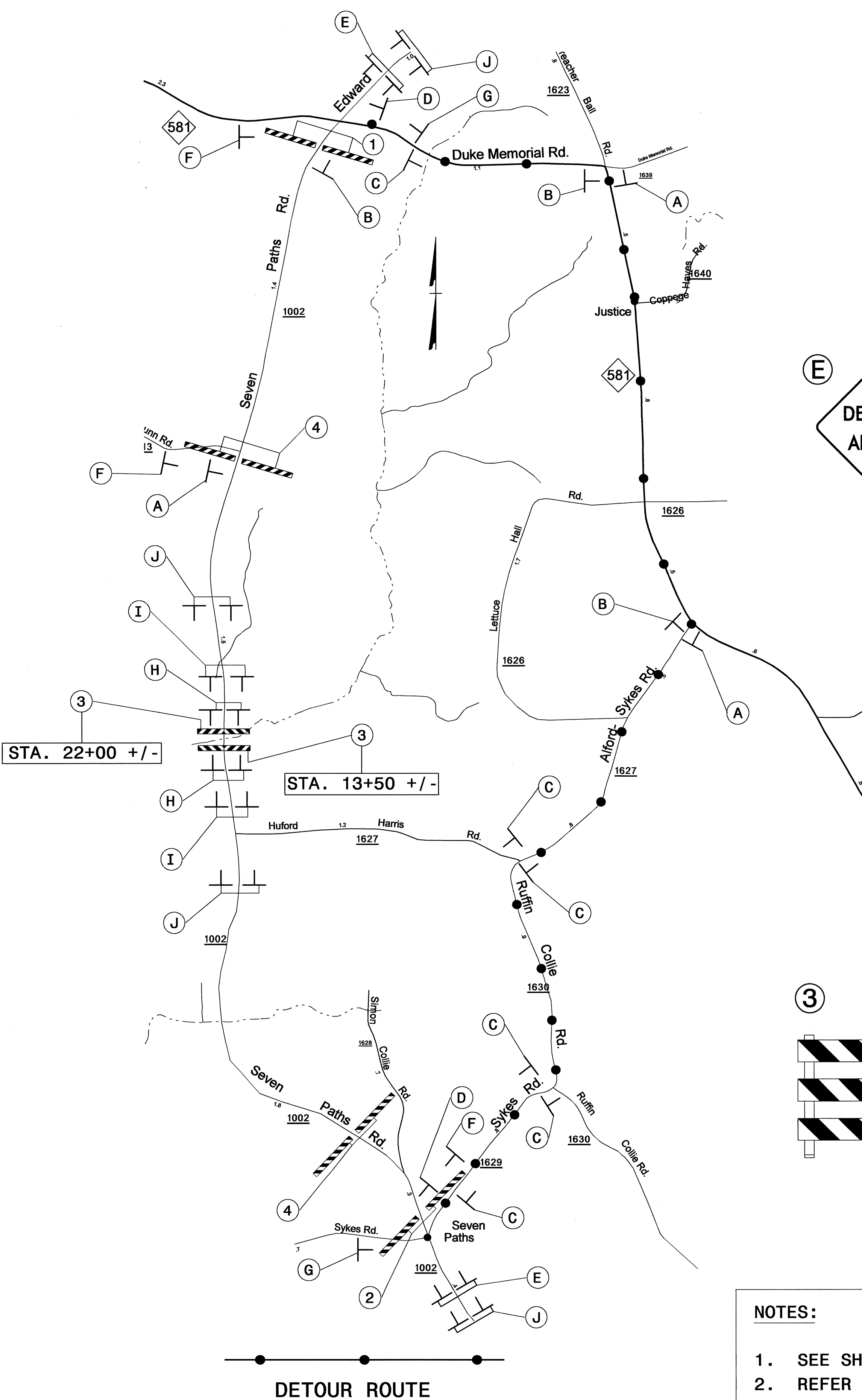
- E) PLACE TYPE III BARRICADES WITH "ROAD CLOSED" SIGN R11-2 ATTACHED OF SUFFICIENT LENGTH TO CLOSE ENTIRE ROADWAY.

PAVEMENT MARKINGS AND MARKERS

- F) TIE PROPOSED PAVEMENT MARKING LINES TO EXISTING PAVEMENT MARKING LINES.

03-JUL-2012 08:01 \\P:\Projects\B4513\TrafficControl\CP\B4513_TC_TMP_01B.dgn
 SHUSSON AT 11248373

APPROVED: _____ DATE: _____ 		<h1 style="margin: 0;">TRANSPORTATION OPERATIONS PLAN</h1>
--	---	--



NOTES:

- SEE SHEET SD-1 FOR SIGN DESIGN.
- REFER TO 1101.03, SHEET 1 OF 9 FOR SIGN DISTANCES.

APPROVED: _____ DATE: _____

SEAL

 7/3/2012

DIVISION OF HIGHWAYS
 STATE OF NORTH CAROLINA
 DEPARTMENT OF TRANSPORTATION
 WORK ZONE TRAFFIC CONTROL

**OFFSITE DETOUR
AND BARRICADE
PLACEMENT**

03-JUL-2012 08:01
 \\dot\dfs\01\Projects\TrafficControl\B4513\TC_TMP_02.dgn
 shassan AT 12248373