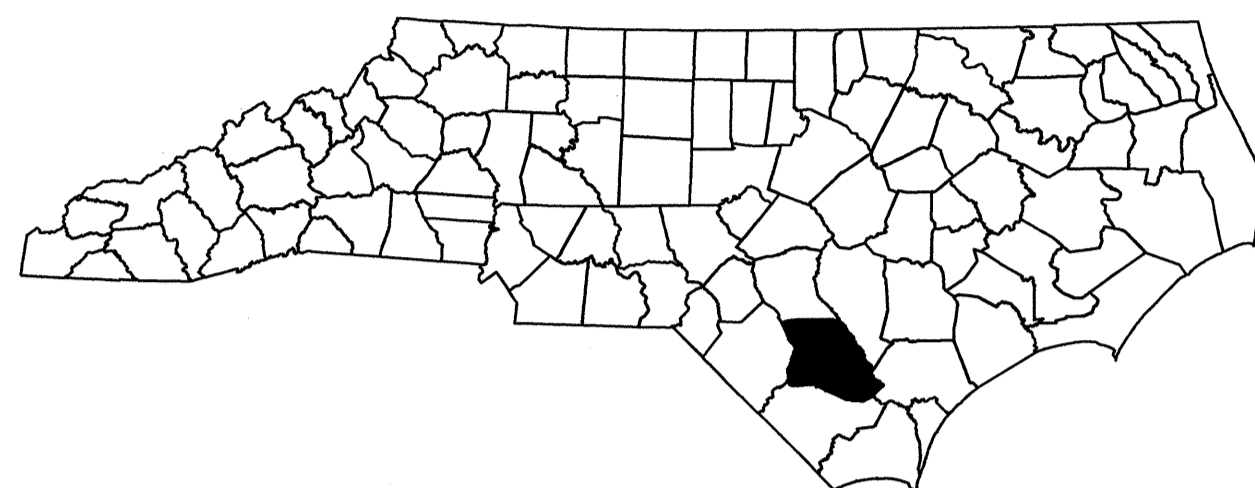


STATE OF NORTH CAROLINA  
DIVISION OF HIGHWAYS

**TRANSPORTATION MANAGEMENT PLAN**

**BLADEN COUNTY**



**ROADWAY STANDARD DRAWINGS**

THE FOLLOWING ROADWAY STANDARDS AS SHOWN IN "ROADWAY STANDARD DRAWINGS" - PROJECT SERVICES UNIT - N.C. DEPARTMENT OF TRANSPORTATION - RALEIGH, N.C., DATED JANUARY 2012 ARE APPLICABLE TO THIS PROJECT AND BY REFERENCE HEREBY ARE CONSIDERED A PART OF THESE PLANS:

STD. NO.	TITLE
1101.02	TEMPORARY LANE CLOSURES
1101.03	TEMPORARY ROAD CLOSURES
1110.01	STATIONARY WORK ZONE SIGNS
1110.02	PORTABLE WORK ZONE SIGNS
1130.01	DRUMS
1135.01	CONES
1145.01	BARRICADES
1150.01	FLAGGING DEVICES
1261.01	GUARDRAIL AND BARRIER DELINEATORS - INSTALLATION SPACING
1261.02	GUARDRAIL AND BARRIER DELINEATORS - TYPES AND MOUNTING
1262.01	GUARDRAIL END DELINEATION
1264.01	OBJECT MARKERS - TYPES
1264.02	OBJECT MARKERS - INSTALLATION

**LEGEND**

**GENERAL**

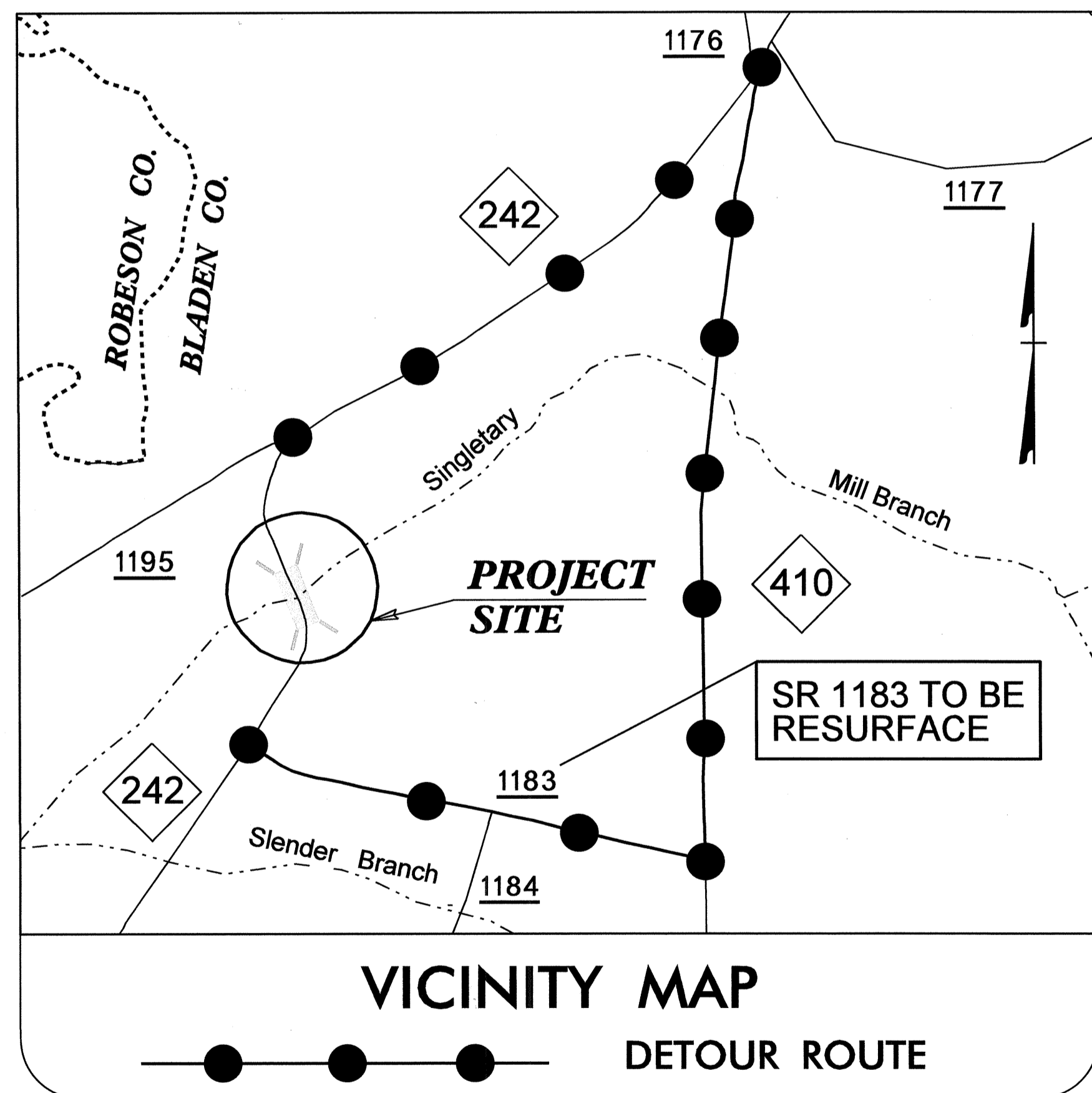
- NORTH ARROW
- WORK AREA

**TEMPORARY SIGNING**

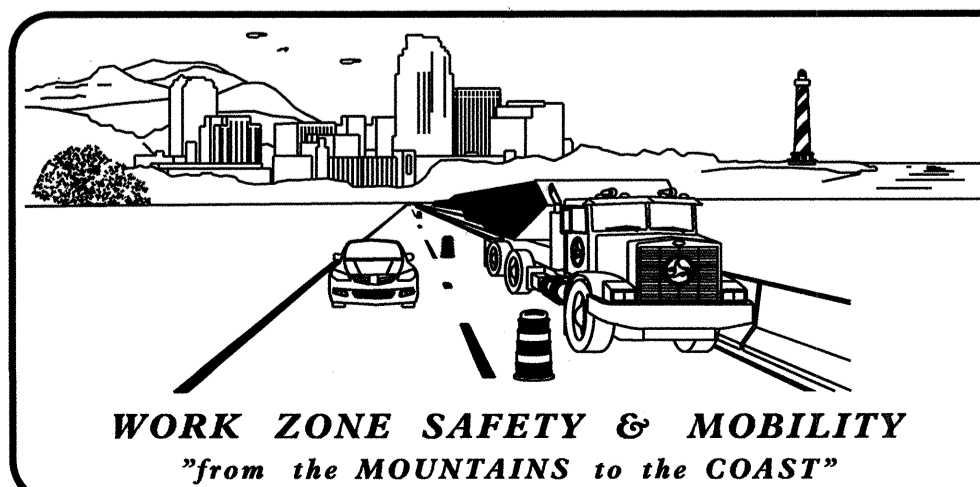
- PORTABLE SIGN
- STATIONARY SIGN
- STATIONARY OR PORTABLE SIGN

**TRAFFIC CONTROL DEVICES**

- BARRICADE (TYPE III)
- CONE
- DRUM
- FLAGGER

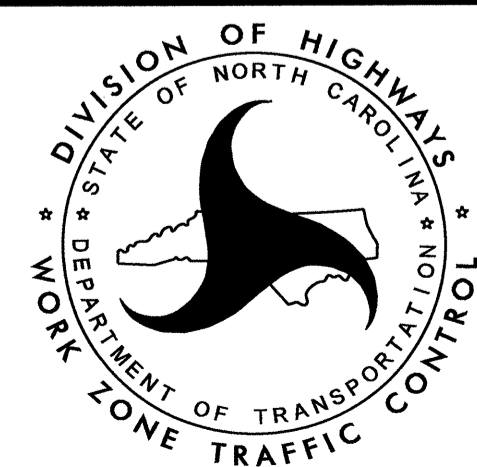


**VICINITY MAP**  
DETOUR ROUTE



**N.C.D.O.T. WORK ZONE TRAFFIC CONTROL**  
1561 MAIL SERVICE CENTER (MSC) RALEIGH, NC 27699-1561  
750 N. GREENFIELD PARKWAY, GARNER, NC 27529 (DELIVERY)  
PHONE: (919) 773-2800 FAX: (919) 771-2745

J. S. BOURNE, P.E. STATE TRAFFIC MANAGEMENT ENGINEER  
STEVE KITE, P.E. TRAFFIC CONTROL PROJECT ENGINEER  
DON PARKER TRAFFIC CONTROL PROJECT DESIGN ENGINEER  
ASHVIN PATEL, P.E. TRAFFIC CONTROL DESIGN ENGINEER



**INDEX OF SHEETS**

SHEET NO.	TITLE
TMP-1	TITLE SHEET, INDEX OF SHEETS, LIST OF APPLICABLE ROADWAY STANDARD DRAWINGS, GENERAL NOTES AND PROJECT PHASING
TMP-2	DETOUR ROUTE AND SIGNING

**GENERAL NOTES**

CHANGES MAY BE REQUIRED WHEN PHYSICAL DIMENSIONS IN THE DETAIL DRAWINGS, STANDARD DETAILS, AND ROADWAY DETAILS ARE NOT ATTAINABLE TO MEET FIELD CONDITIONS OR RESULT IN DUPLICATE OR UNDESIRED OVERLAPPING OF DEVICES. MODIFICATION MAY INCLUDE: MOVING, SUPPLEMENTING, COVERING, OR REMOVAL OF DEVICES AS DIRECTED BY THE ENGINEER.

THE FOLLOWING GENERAL NOTES APPLY AT ALL TIMES FOR THE DURATION OF THE CONSTRUCTION PROJECT EXCEPT WHEN OTHERWISE NOTED IN THE PLAN OR DIRECTED BY THE ENGINEER.

**TRAFFIC PATTERN ALTERATIONS**

- A) NOTIFY THE ENGINEER THIRTY (30) CALENDAR DAYS PRIOR TO ANY TRAFFIC PATTERN ALTERATION.

**SIGNING**

- B) PROVIDE SIGNING AND DEVICES REQUIRED TO CLOSE THE ROAD ACCORDING TO THE ROADWAY STANDARD DRAWINGS AND TRAFFIC CONTROL PLANS.

PROVIDE SIGNING REQUIRED FOR THE OFF-SITE DETOUR ROUTE AS SHOWN IN THE TRAFFIC CONTROL PLANS.

- C) COVER OR REMOVE ALL SIGNS AND DEVICES REQUIRED TO CLOSE THE ROAD WHEN ROAD CLOSURE IS NOT IN OPERATION.

COVER OR REMOVE ALL SIGNS REQUIRED FOR THE OFF-SITE DETOUR WHEN THE DETOUR IS NOT IN OPERATION.

- D) ENSURE ALL NECESSARY SIGNING IS IN PLACE PRIOR TO ALTERING ANY TRAFFIC PATTERN.

**TRAFFIC CONTROL DEVICES**

- E) PLACE TYPE III BARRICADES, WITH "ROAD CLOSED" SIGN R11-2 ATTACHED, OF SUFFICIENT LENGTH TO CLOSE ENTIRE ROADWAY.

**PROJECT PHASING**

- STEP 1: USING FLAGGERS, COMPLETE WIDENING AND RESURFACING OF SR 1183 AND PLACE FINAL PAVEMENT MARKINGS/MARKERS. (SEE RSD 1101.02, SHEET 1, ROADWAY PLANS AND PAVEMENT MARKING PLANS)
- STEP 2: USING ROADWAY STANDARD DRAWING 1101.03, SHEET 1 & 2 OF 9 AND TMP-2 CLOSE NC 242 AND DETOUR TRAFFIC.
- STEP 3: REMOVE EXISTING BRIDGE AND CONSTRUCT PROPOSED BRIDGE AND APPROACHES, UP TO AND INCLUDING THE FINAL LAYER OF SURFACE COURSE. PLACE FINAL PAVEMENT MARKINGS/MARKERS AND TIE IN WITH EXISTING MARKINGS.
- STEP 4: REMOVE ALL TRAFFIC CONTROL DEVICES AND RE-OPEN NC 242 TO TRAFFIC.

APPROVED:   
DATE: August 8, 2012

SEAL



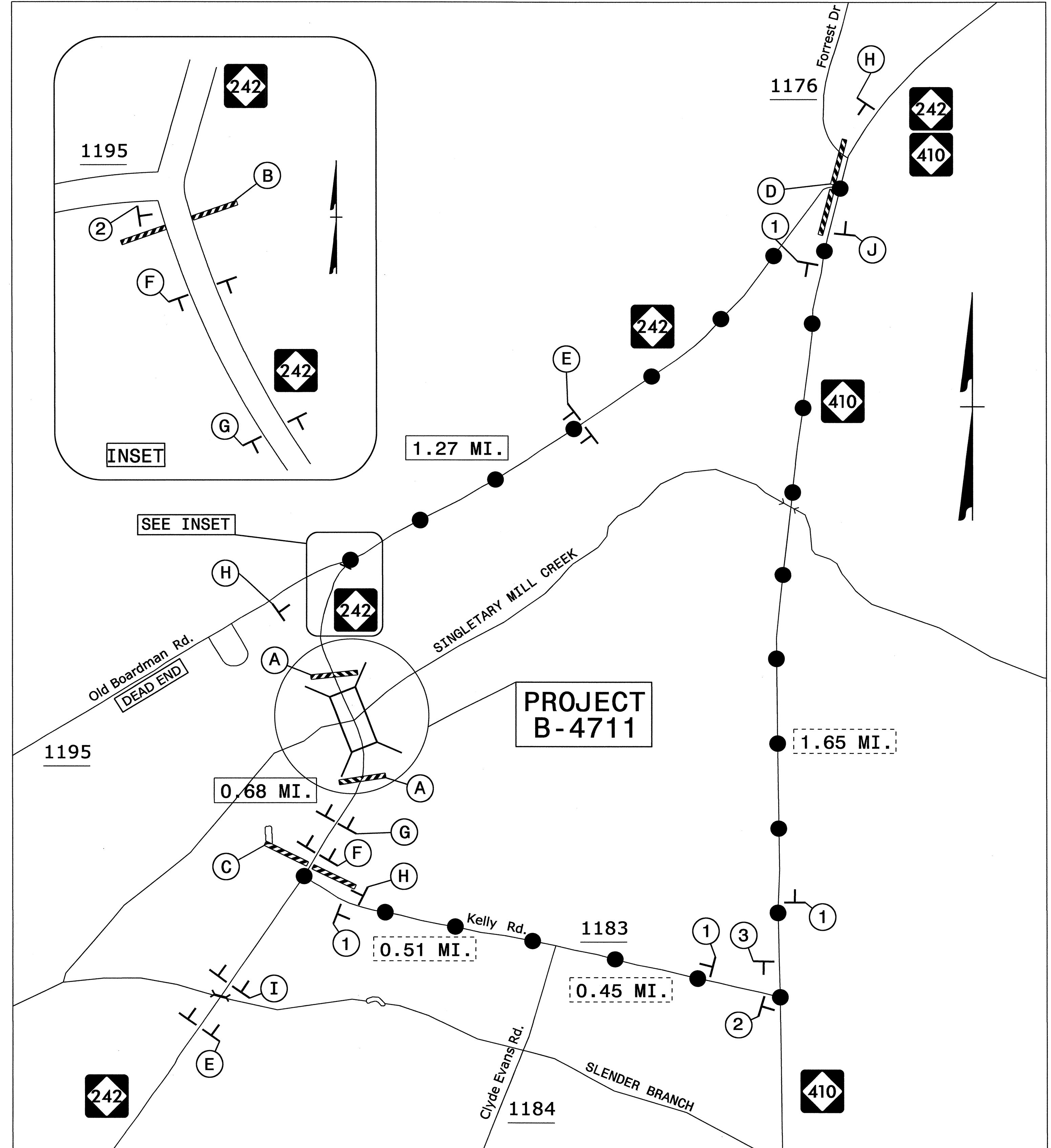
SHEET NO.

TMP-1

B-4711

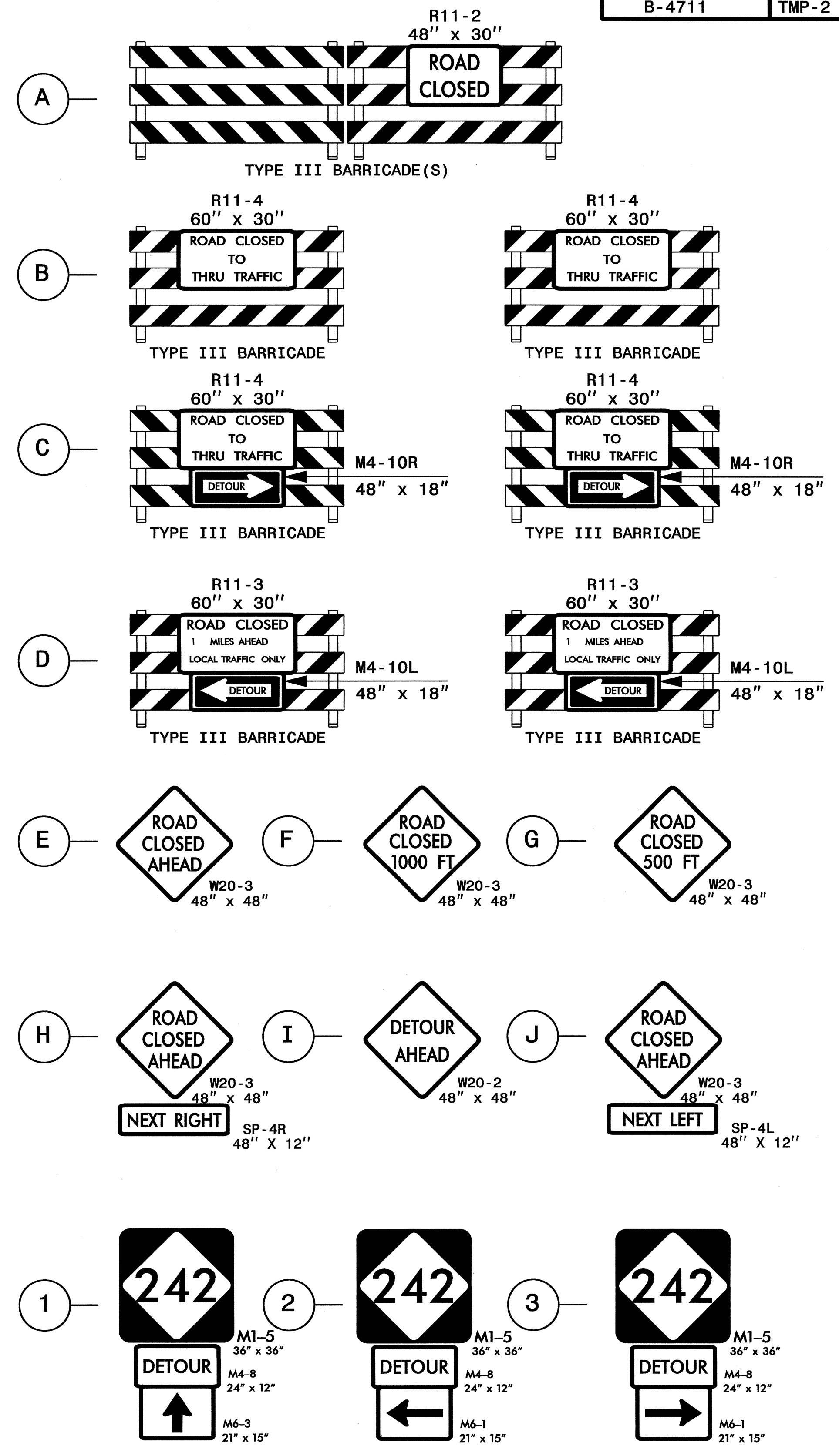
TIP PROJECT:

03-AUG-2012 14:46 \\D01-STOR06\Projects\Proj\TIPProjects\B\4711\TrafficControl\TCP\B-4711\_TC\_TMP\_01.dgn

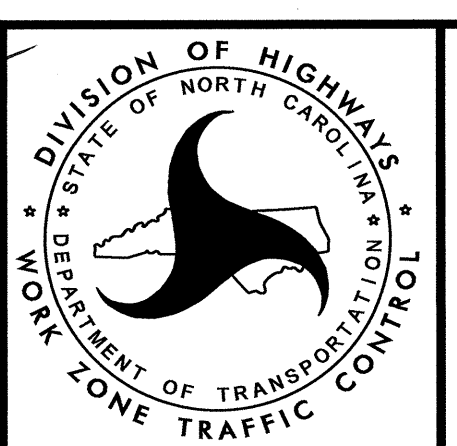


NOTE: SEE RSD 1101.03, SHEET 1 OF 9 FOR ADVANCE WARNING SIGNAGE AND BARRICADE PLACEMENT

●—●—●—●  
DENOTES DETOUR



APPROVED: *[Signature]* DATE: 7/12/12



DETOUR ROUTE AND SIGNING

I:\JUL\_2012\_16:09\DOT13 TOR06-22\Proj\Traffic\TrafficControl\TCP\B-4711\_TC\_TMP\_02.dgn