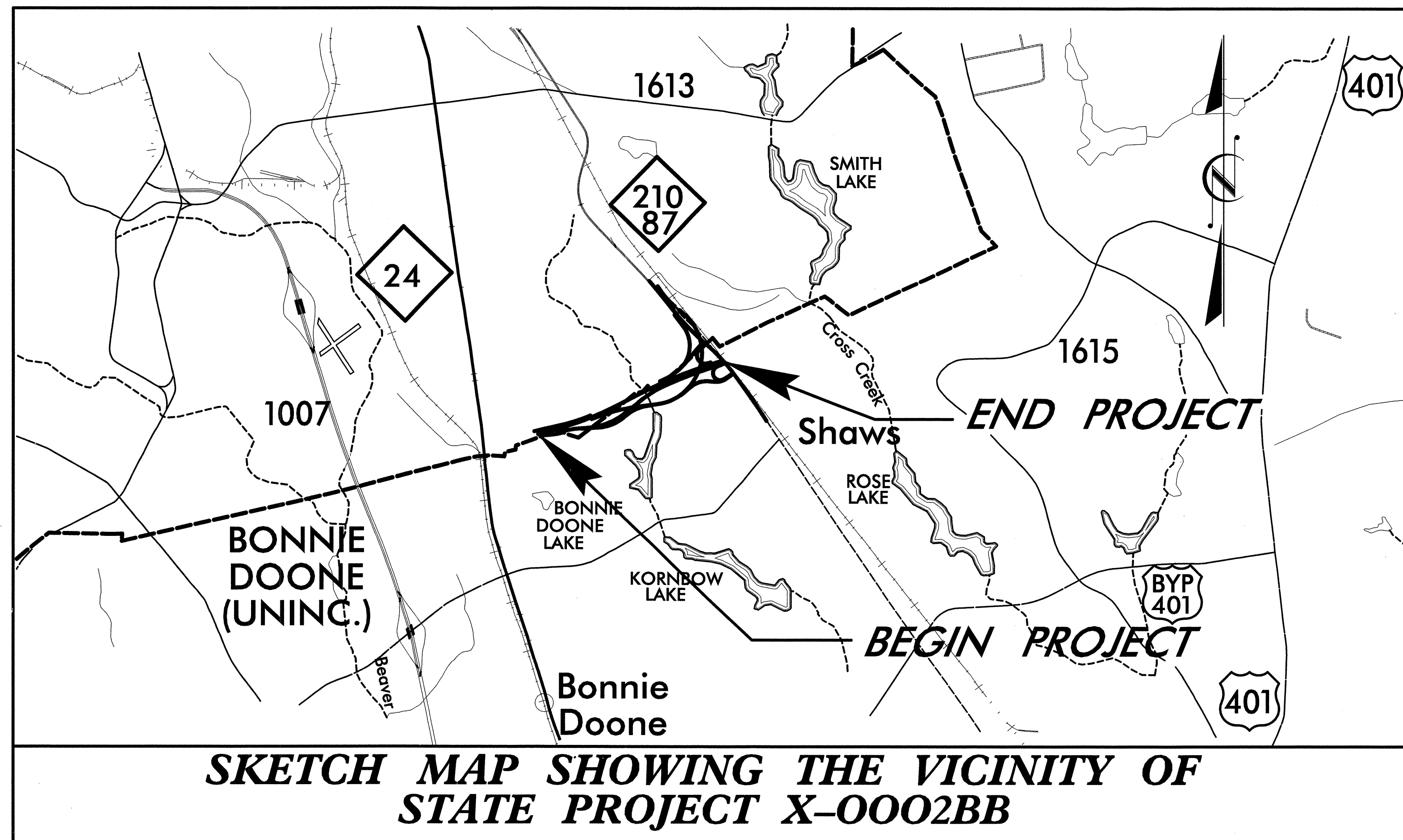
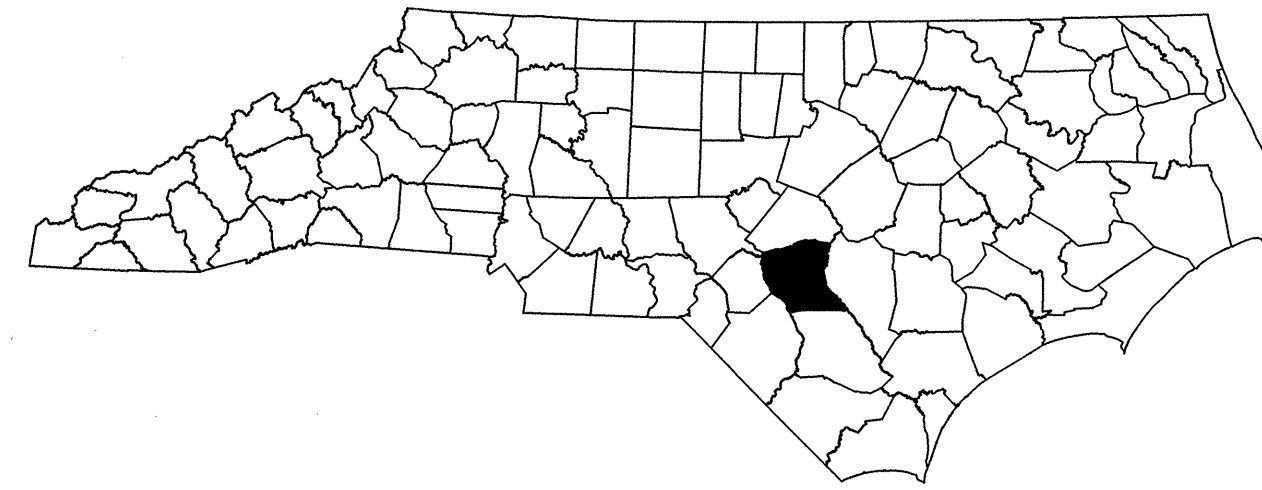


STATE OF NORTH CAROLINA
DIVISION OF HIGHWAYS

TRANSPORTATION MANAGEMENT PLAN
CUMBERLAND COUNTY



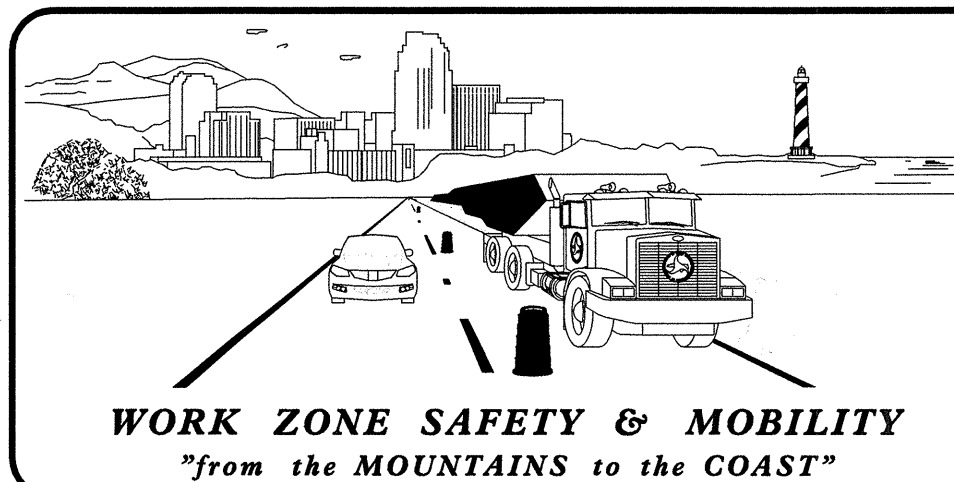
INDEX OF SHEETS	
<u>SHEET NO.</u>	<u>TITLE</u>
TMP-1	TITLE SHEET, AND INDEX OF SHEETS
TMP-1A	LIST OF APPLICABLE ROADWAY STANDARD DRAWINGS, AND LEGEND
TMP-1B	TRANSPORTATION OPERATIONS PLAN: (MANAGEMENT STRATEGIES, GENERAL NOTES AND LOCAL NOTES)
TMP-2A	ADVANCED WORK ZONE WARNING SIGNS FOR FREEWAYS (4 LANES OR GREATER)
TMP-2B	DETAIL DRAWING FOR ADVANCE WORK ZONE WARNING SIGN DESIGNS
TMP-3	PHASING
TMP-4 THRU 10	PHASE I DETAILS

SHEET NO.
TMP-1

X-0002BB

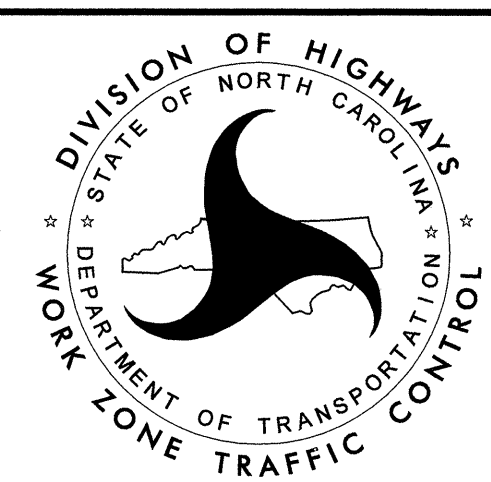
TIP PROJECT:

7/31/2012
P:\TRAFFIC\X-0002bb\X0002bb_tmp_1title.dgn
Florence & Hutcheson



N.C.D.O.T. WORK ZONE TRAFFIC CONTROL
1580 MAIL SERVICE CENTER (MSC) RALEIGH, NC 27699-1580
750 N. GREENFIELD PARKWAY, GARNER, NC 27529 (DELIVERY)
PHONE: (919) 773-2800 FAX: (919) 771-2745

J. S. BOURNE, P.E. STATE TRAFFIC MANAGEMENT ENGINEER
J. S. KITE, P.E. TRAFFIC CONTROL PROJECT ENGINEER
D. A. PARKER TRAFFIC CONTROL PROJECT DESIGN ENGINEER
TRAFFIC CONTROL DESIGN ENGINEER



FH Florence & Hutcheson
An ICA Company
5121 Kingston Way, Raleigh, NC 27607
NC License No. P-0228

APPROVED: *[Signature]*
DATE: 7-31-12

SEAL

ROADWAY STANDARD DRAWINGS

THE FOLLOWING ROADWAY STANDARDS AS SHOWN IN "ROADWAY STANDARD DRAWINGS" - PROJECT SERVICES UNIT - N.C. DEPARTMENT OF TRANSPORTATION - RALEIGH, N.C., DATED JULY 2006 ARE APPLICABLE TO THIS PROJECT AND BY REFERENCE HEREBY ARE CONSIDERED A PART OF THESE PLANS:

STD. NO.	TITLE
1101.02	TEMPORARY LANE CLOSURES
1101.03	TEMPORARY ROAD CLOSURES
1101.04	TEMPORARY SHOULDER CLOSURES
1101.11	TRAFFIC CONTROL DESIGN TABLES
1110.01	STATIONARY WORK ZONE SIGNS
1110.02	PORTABLE WORK ZONE SIGNS
1130.01	DRUMS
1135.01	CONES
1145.01	BARRICADES
1150.01	FLAGGERS DEVICES
1180.01	SKINNY - DRUM

LEGEND

GENERAL

- DIRECTION OF TRAFFIC FLOW
- DIRECTION OF PEDESTRIAN TRAFFIC FLOW
- EXIST. PVMT.
- NORTH ARROW
- PROPOSED PVMT.

- WORK AREA
- CONTINUING CONSTRUCTION
- REMOVAL

TRAFFIC CONTROL DEVICES

- BARRICADE (TYPE III)
- CONE
- DRUM SKINNY DRUM TUBULAR MARKER
- TEMPORARY CRASH CUSHION
- FLASHING ARROW PANEL (TYPE C)
- FLAGGER
- LAW ENFORCEMENT
- TRUCK MOUNTED IMPACT ATTENUATOR (TMIA)
- CHANGEABLE MESSAGE SIGN

TEMPORARY SIGNING

- PORTABLE SIGN
- STATIONARY SIGN
- STATIONARY OR PORTABLE SIGN

SIGNALS

- EXISTING
- PROPOSED
- TEMPORARY

PAVEMENT MARKINGS

- EXISTING LINES
- TEMPORARY LINES

PAVEMENT MARKERS

- CRYSTAL/CRYSTAL
- CRYSTAL/RED
- YELLOW/YELLOW

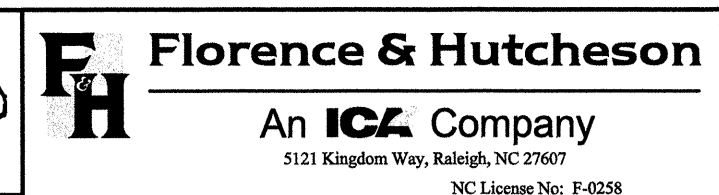
PAVEMENT MARKING SYMBOLS

- PAVEMENT MARKING SYMBOLS

APPROVED: DATE: 6-8-12			ROADWAY STANDARD DRAWINGS
SEAL			

GENERAL NOTES

PROJECT NOTES



PROJ. REFERENCE NO.	SHEET NO.
X-0002BB	TMP-1B

CHANGES MAY BE REQUIRED WHEN PHYSICAL DIMENSIONS IN THE DETAIL DRAWINGS, STANDARD DETAILS, AND ROADWAY DETAILS ARE NOT ATTAINABLE TO MEET FIELD CONDITIONS OR RESULT IN DUPLICATE OR UNDESIRED OVERLAPPING OF DEVICES. MODIFICATION MAY INCLUDE: MOVING, SUPPLEMENTING, COVERING, OR REMOVAL OF DEVICES AS DIRECTED BY THE ENGINEER.

THE FOLLOWING GENERAL NOTES APPLY AT ALL TIMES FOR THE DURATION OF THE CONSTRUCTION PROJECT EXCEPT WHEN OTHERWISE NOTED IN THE PLAN OR DIRECTED BY THE ENGINEER.

TIME RESTRICTIONS

A) DO NOT CLOSE OR NARROW TRAVEL LANES AS FOLLOWS:

ROAD NAME	DAY AND TIME RESTRICTIONS
-Y1- MURCHISON RD (NORTHBOUND)	7:00AM TO 9:00AM MONDAY-FRIDAY
-Y1- MURCHISON RD (SOUTHBOUND)	3:00PM TO 6:00PM MONDAY-FRIDAY
-Y2- BRAGG BLVD	6:00AM TO 8:00PM MONDAY-SUNDAY

B) DO NOT CLOSE OR NARROW TRAVEL LANES DURING HOLIDAYS AND SPECIAL EVENTS AS FOLLOWS:

ROAD NAME
-Y1- MURCHISON ROAD AND -Y2- BRAGG BLVD

HOLIDAY

- FOR ANY UNEXPECTED OCCURRENCE THAT CREATES UNUSUALLY HIGH TRAFFIC VOLUMES, AS DIRECTED BY THE ENGINEER.
- FOR NEW YEAR'S, BETWEEN THE HOURS OF 6:00 A.M. DECEMBER 31ST TO 8:00 P.M. JANUARY 2ND. IF NEW YEAR'S DAY IS ON A FRIDAY, SATURDAY, SUNDAY, OR MONDAY THEN UNTIL 8:00 P.M. THE FOLLOWING TUESDAY.
- FOR EASTER, BETWEEN THE HOURS OF 6:00 A.M. THURSDAY AND 8:00 P.M. MONDAY.
- FOR MEMORIAL DAY, BETWEEN THE HOURS OF 6:00 A.M. FRIDAY TO 8:00 P.M. TUESDAY.
- FOR INDEPENDENCE DAY, BETWEEN THE HOURS OF 6:00 A.M. THE DAY BEFORE INDEPENDENCE DAY AND 8:00 P.M. THE DAY AFTER INDEPENDENCE DAY.

IF INDEPENDENCE DAY IS ON A FRIDAY, SATURDAY, SUNDAY OR MONDAY THEN BETWEEN THE HOURS OF 6:00 A.M. THE THURSDAY BEFORE INDEPENDENCE DAY AND 8:00 P.M. THE TUESDAY AFTER INDEPENDENCE DAY.
- FOR LABOR DAY, BETWEEN THE HOURS OF 6:00 A.M. FRIDAY AND 8:00 P.M. TUESDAY.
- FOR THANKSGIVING DAY, BETWEEN THE HOURS OF 6:00 A.M. TUESDAY TO 8:00 P.M. MONDAY.
- FOR CHRISTMAS, BETWEEN THE HOURS OF 6:00 A.M. THE FRIDAY BEFORE THE WEEK OF CHRISTMAS DAY AND 8:00 P.M. THE FOLLOWING TUESDAY AFTER THE WEEK OF CHRISTMAS.
- FOR SPRING FEST AND OCTOBER FEST ON FORT BRAGG, BETWEEN THE HOURS OF 6:00 A.M. TWO DAYS PRIOR TO THE BEGINNING OF THE EVENT AND 8:00 P.M. THE FOLLOWING DAY AFTER THE END OF THE EVENT.

LANE AND SHOULDER CLOSURE REQUIREMENTS

- REMOVE LANE CLOSURE DEVICES FROM THE LANE WHEN WORK IS NOT BEING PERFORMED BEHIND THE LANE CLOSURE OR WHEN A LANE CLOSURE IS NO LONGER NEEDED OR AS DIRECTED BY THE ENGINEER.
- WHEN PERSONNEL AND/OR EQUIPMENT ARE WORKING ON THE SHOULDER ADJACENT TO AN UNDIVIDED FACILITY AND WITHIN 1.5 M OF AN OPEN TRAVEL LANE, CLOSE THE NEAREST OPEN TRAVEL LANE USING ROADWAY STANDARD DRAWING NO. 1101.02 UNLESS THE WORK AREA IS PROTECTED BY BARRIER OR GUARDRAIL.

WHEN PERSONNEL AND/OR EQUIPMENT ARE WORKING ON THE SHOULDER ADJACENT TO A DIVIDED FACILITY AND WITHIN 3 M OF AN OPEN TRAVEL LANE, CLOSE THE NEAREST OPEN TRAVEL LANE USING ROADWAY STANDARD DRAWING NO. 1101.02 UNLESS THE WORK AREA IS PROTECTED BY BARRIER OR GUARDRAIL.
- WHEN PERSONNEL AND/OR EQUIPMENT ARE WORKING WITHIN A LANE OF TRAVEL OF AN UNDIVIDED OR DIVIDED FACILITY, CLOSE THE LANE ACCORDING TO THE TRAFFIC CONTROL PLANS, ROADWAY STANDARD DRAWINGS, OR AS DIRECTED BY THE ENGINEER. CONDUCT THE WORK SO THAT ALL PERSONNEL AND/OR EQUIPMENT REMAIN WITHIN THE CLOSED TRAVEL LANE.

TRAFFIC PATTERN ALTERATIONS

- NOTIFY THE ENGINEER TWENTY ONE (21) CALENDAR DAYS PRIOR TO ANY TRAFFIC PATTERN ALTERATION.

SIGNING

- INSTALL ADVANCE WORK ZONE WARNING SIGNS WHEN WORK IS WITHIN 12 M FROM THE EDGE OF TRAVEL LANE AND NO MORE THAN THREE (3) DAYS PRIOR TO THE BEGINNING OF CONSTRUCTION.

TRAFFIC CONTROL DEVICES

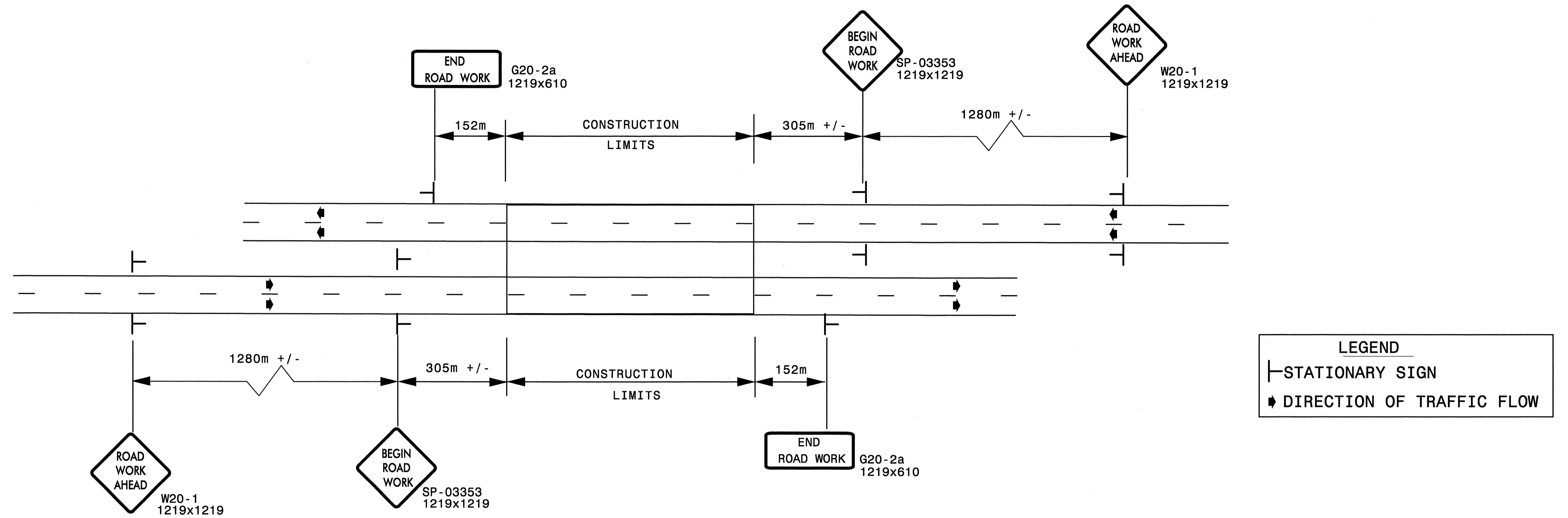
- PLACE TYPE III BARRICADES, WITH "ROAD CLOSED" SIGN R11-2 ATTACHED, OF SUFFICIENT LENGTH TO CLOSE ENTIRE ROADWAY.

APPROVED: <i>[Signature]</i> DATE: 7-31-12		PROJECT NOTES	
	SCALE: NONE		REVISIONS
	DATE: JUNE, '12		
	DWG. BY: GEP		
	DESIGN BY: GEP		
REVIEWED BY: TAG			

7/2012
 P:\TRAFFIC\X-0002bb\tmp-general notes.lb.dgn
 Florence & Hutcheson

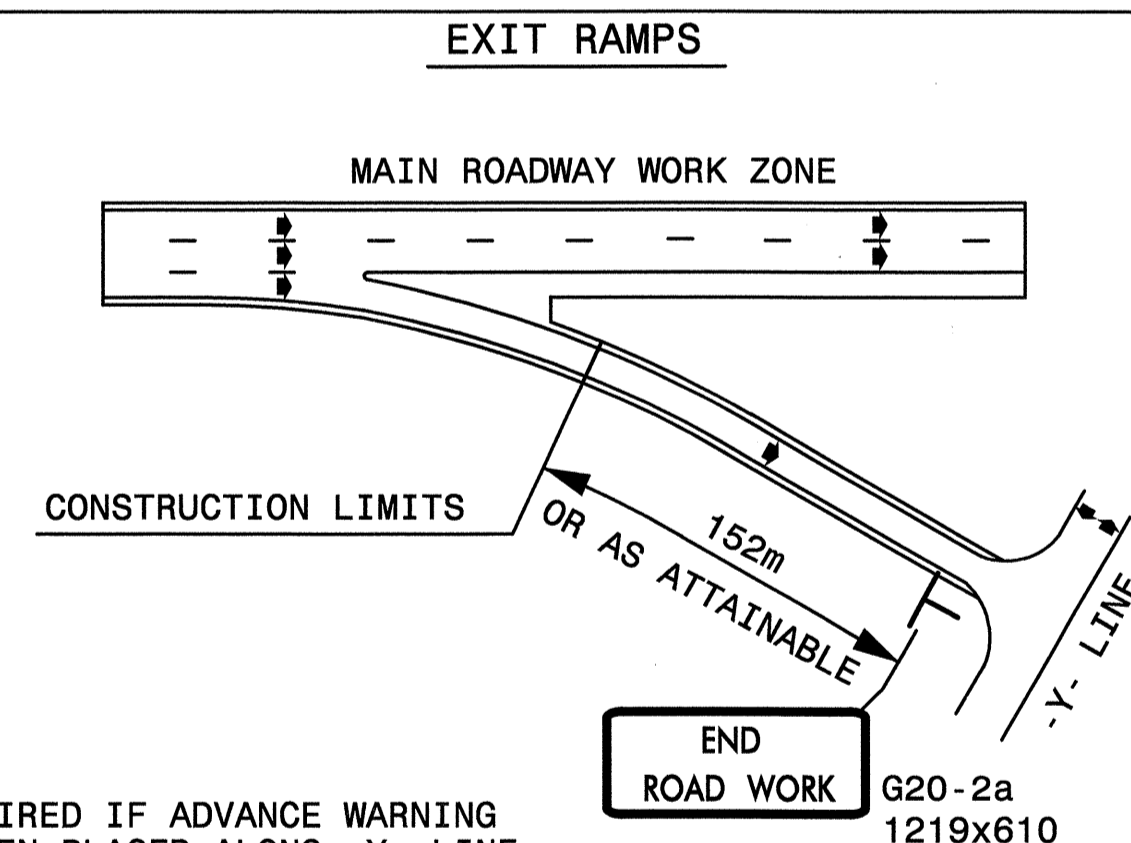
ADVANCED WORK ZONE WARNING SIGNING FOR FREEWAYS (4 LANES OR GREATER)

DETAIL A



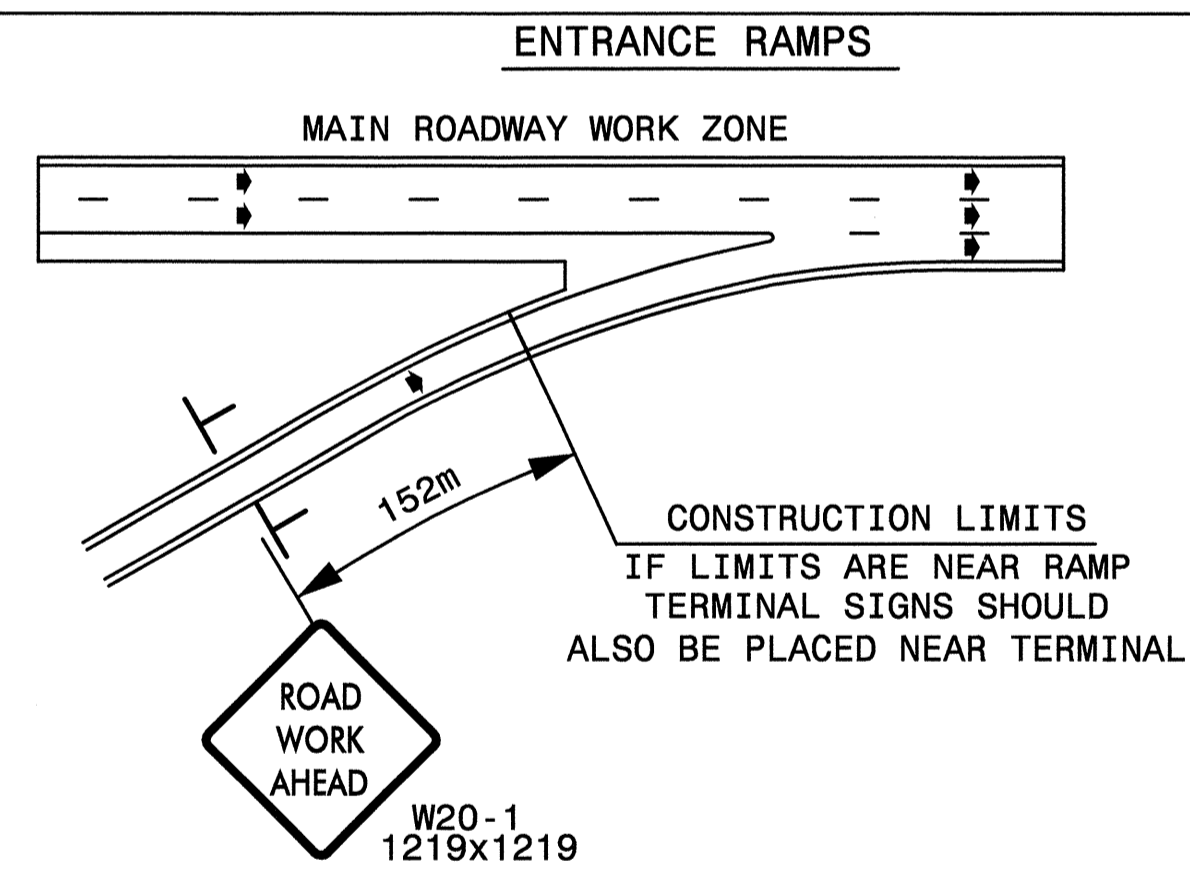
* USE THE "\$250 SPEEDING PENALTY" SIGN, SPEED LIMIT SIGN, AND ORANGE PANEL; ONLY WHEN A "\$250 SPEEDING PENALTY" ORDINANCE HAS BEEN ISSUED BY THE REGIONAL TRAFFIC ENGINEER.

DETAIL B

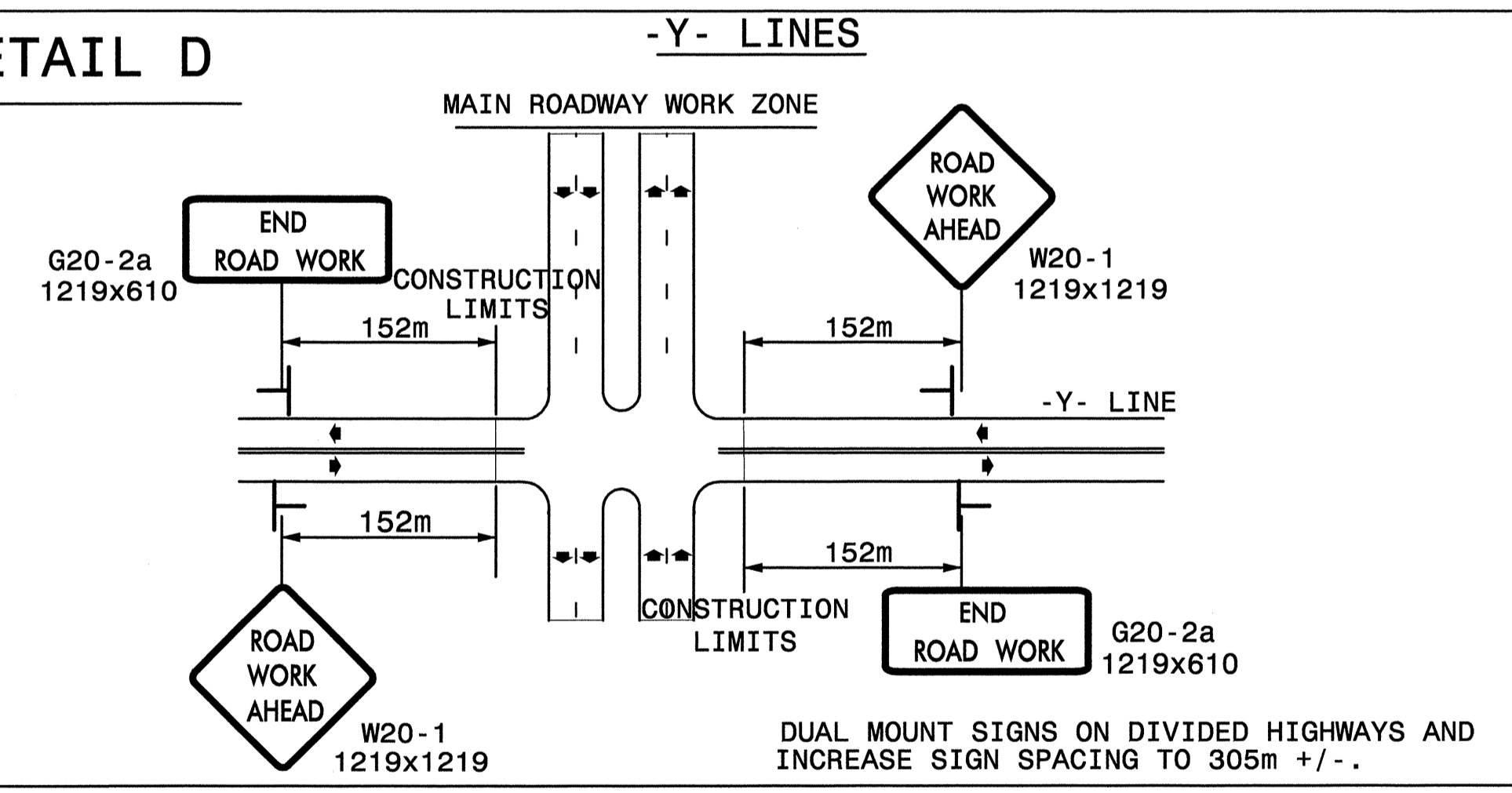


NOTE: SIGN NOT REQUIRED IF ADVANCE WARNING SIGNS HAVE BEEN PLACED ALONG -Y- LINE THAT RAMP INTERSECTS. IF CONSTRUCTION LIMITS ARE AT END OF RAMP, PLACE SIGN AT END OF RAMP.

DETAIL C



DETAIL D



GENERAL NOTES

- USE FLUORESCENT ORANGE SHEETING (TYPE VII OR HIGHER) ON ALL ADVANCED WORK ZONE SIGNS.
- DO NOT INSTALL ADVANCE WARNING SIGNS MORE THAN 3 DAYS PRIOR TO BEGINNING OF WORK.
- SIGNS SHOWN ARE REQUIRED FOR WORK ZONES THAT WILL REMAIN IN EFFECT OVERNIGHT. FOR SHORT-TERM DAILY MAINTENANCE TYPE OPERATIONS, THIS SIGNING APPLICATION IS OPTIONAL; MAY USE ONLY APPLICABLE ROADWAY STANDARD DRAWINGS INSTEAD. HOWEVER, IF THIS SIGNING APPLICATION IS USED, SIGNS MAY BE PORTABLE MOUNTED.
- ALL SIGN SPACING DIMENSIONS ARE APPROXIMATE, FIELD ADJUST AS NECESSARY OR AS DIRECTED.
- USE 1.4Kg STEEL U-CHANNEL POST OR 90mm X 90mm WOOD POST FOR ALL WORK ZONE SIGNS. 1.4Kg STEEL U-CHANNEL POSTS MUST MEET THE REQUIREMENTS OF STANDARD SPECIFICATION SECTION 1094-1(B); MAY BE GALVANIZED STEEL OR MAY BE PAINTED GREEN BY THE POST MANUFACTURER. SQUARE STEEL TUBING POSTS HAVING EQUIVALENT STRENGTH OF THE 1.4Kg STEEL U-CHANNEL POST ARE ALSO ACCEPTABLE FOR USE. ERECT SIGNS PER ROADWAY STANDARD DRAWING 1110.01. PAYMENT FOR WOOD POSTS, 1.4Kg STEEL U-CHANNEL AND SQUARE STEEL TUBING POSTS WITH SIGNS WILL BE MADE ACCORDING TO STANDARD SPECIFICATION "WORK ZONE SIGNS" SECTION 1110.
- WHEN NECESSARY, USE SPLICING IN ACCORDANCE WITH ROADWAY STANDARD DRAWING NO. 1110.01. REMOVE ENTIRE POST WHEN REMOVING SIGNS WITH SPLICED POSTS.
- DO NOT BACK BRACE SIGN SUPPORTS.

APPROVED: <i>[Signature]</i> DATE: 6-8-12	ADVANCED WORK ZONE WARNING SIGNS FOR FREEWAYS (4 LANES OR GREATER)															
	<table border="1" style="width: 100%; border-collapse: collapse;"> <tr> <td style="width: 30%;">SCALE: NONE</td> <td style="width: 40%; text-align: center;">REVISIONS</td> <td style="width: 30%;"></td> </tr> <tr> <td>DATE:</td> <td style="text-align: center;">03/04</td> <td></td> </tr> <tr> <td>DWG. BY:</td> <td></td> <td></td> </tr> <tr> <td>DESIGN BY:</td> <td></td> <td></td> </tr> <tr> <td>REVIEWED BY:</td> <td></td> <td></td> </tr> </table>	SCALE: NONE	REVISIONS		DATE:	03/04		DWG. BY:			DESIGN BY:			REVIEWED BY:		
SCALE: NONE	REVISIONS															
DATE:	03/04															
DWG. BY:																
DESIGN BY:																
REVIEWED BY:																

6/27/2012 P:\TRAFFIC\X-0002bb\Freeways_4lanes_or_greater_Met.dgn Florence & Hutcheson

SP 03353

SIGN NUMBER: SP-03353 TYPE: A QUANTITY: 1	BACKG COLOR: Fluorescent Orange COPY COLOR: Black	DESIGN BY: CLD PROJECT ID: ALL PROJECTS	CHECKED BY: CHECKED DIV: DIV	STD #: W20-1 DATE: Sep 19, 2003
---	--	--	---------------------------------	------------------------------------

SYMBOL	X	Y	WID	HT

SIGN WIDTH: 1219mm
HEIGHT: 1219mm
TOTAL AREA: 1.5 Sq.m

BORDER TYPE: FLUSH
RECESS: 13mm
WIDTH: 19mm
RADII: 35mm

NO. Z BARS: N/A
LENGTH: N/A

MAT'L:

USE NOTES: 2, 4

- Legend and border shall be direct applied Type VII reflective sheeting.
- Legend and border shall be direct applied non-reflective sheeting.
- Shields shall be Type VII reflective sheeting on 0.032" (0.8mm) aluminum and demountable.
- Background shall be Type VII reflective sheeting.
- Center arrow(s) vertically on sign.
- Bottom panel shall be yellow Type III sheeting. Legend shall be direct applied black non-reflective sheeting. Yellow panel is:

LETTER POSITIONS

Letter spacings are to start of next letter

Letter	B	E	G	I	N	Series/Size	Text Length
BEGIN	561	139	122	139	64	100	561
ROAD	R	O	A	D			
ROAD	586	130	136	145	100	586	
WORK	567	167	144	139	100	567	

Spacing Factor is 1 unless specified otherwise

FILENAME: COPY

GENERAL NOTES FOR THE "BEGIN ROAD WORK" SIGN

- SIGN SP-03353 "BEGIN ROAD WORK" ONLY APPLIES TO FULL CONTROL AND PARTIAL CONTROL OF ACCESS ROADWAYS
- WHEN USED, INSTALL SIGN SP-03353 "BEGIN ROAD WORK" ACCORDING TO DETAIL A ON SHEET TMP-2A.

STATE OF NORTH CAROLINA
 DEPT. OF TRANSPORTATION
 DIVISION OF HIGHWAYS
 RALEIGH, N.C.

DETAIL DRAWING FOR
 WORK ZONE SIGNS

6/27/2012
 P:\TRAFFIC\X-0002bb\Sign_Designs_Met.dgn
 Florence & Hutcheson

APPROVED: DATE: 6-8-12	DETAIL DRAWING FOR ADVANCED WORK ZONE WARNING SIGN DESIGNS	
	SCALE: NONE	REVISIONS
	DATE: 08/03	04/04
	DWG. BY:	
	DESIGN BY:	
REVIEWED BY:		CADD FILE



PHASING

STEP 1. USING ROADWAY STANDARD DRAWING NUMBER 1101.02 OR 1101.04, INSTALL ADVANCE WARNING SIGNS ON -Y1-, MURCHISON ROAD AND -Y2-, BRAGG BLVD. (SEE SHEETS 2A AND 2B)

STEP 2. AWAY FROM TRAFFIC, COMPLETE CONSTRUCTION UP TO AND INCLUDING FINAL FINAL LAYER OF SURFACE COURSE IN THE FOLLOWING AREAS:

- L- FROM STA. 48+50± TO STA. 57+12±
- L- FROM STA. 59+08± TO STA. 60+79±
- COL2- FROM STA. 39+40± TO STA. 47+87±
- LP2B- FROM STA. 10+00± TO STA. 12+33±
- SPUR2B- FROM STA. 10+00± TO STA. 10+54±
- LP2D- FROM STA. 12+04± TO STA. 12+47±
- SPUR2D- FROM STA. 10+00± TO STA. 10+41±
- RP2D- FROM STA. 10+88± TO STA. 14+07±
- CDR- FROM STA. 45+04± TO STA. 52+71±
- RPCDR- FROM STA. 11+65± TO STA. 16+25±
- FLYOVER- FROM STA. 14+79± TO STA. 15+89±
- FLYOVER- FROM STA. 17+54± TO STA. 21+37±
- FLYOVER- FROM STA. 26+27± TO STA. 30+00±
- RPB- FROM STA. 11+19± TO STA. 15+21±
- RPC- FROM STA. 11+23± TO STA. 15+33±
- SPURB- FROM STA. 13+27± TO STA. 16+79±

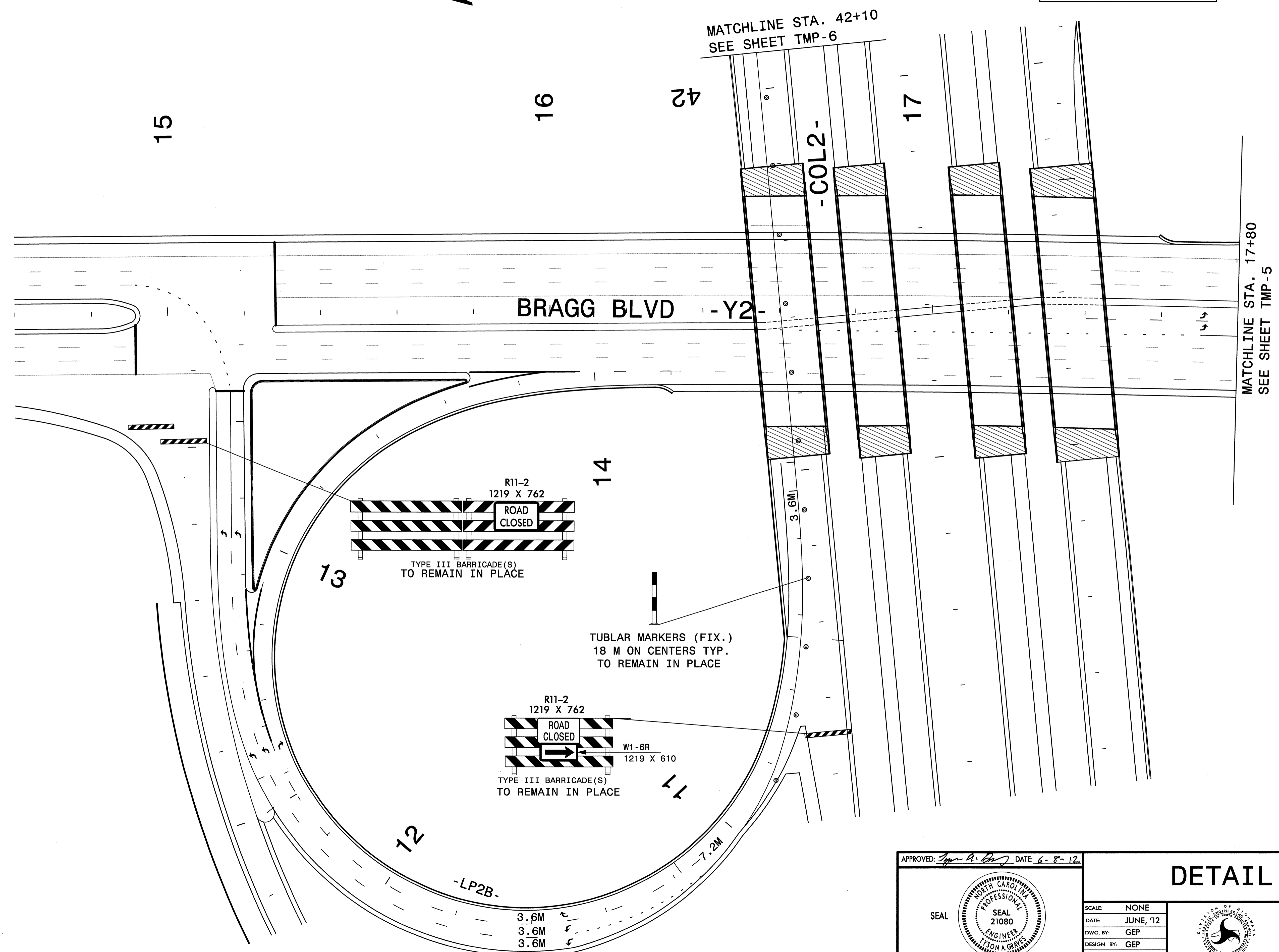
STEP 3. AWAY FROM TRAFFIC, PLACE FINAL PAVEMENT MARKING LINES AND SYMBOLS AS SHOWN IN PAVEMENT MARKING PLANS. PLACE TYPE III BARRICADES AND TUBULAR MARKERS (FIX.) AS SHOWN ON SHEETS TMP-4 THRU TMP-10 (WHICH ARE TO REMAIN IN PLACE UPON COMPLETION OF THIS PROJECT). USING ROADWAY STANDARD DRAWING 1101.02 SHEET 3 OF 9 AND 1101.03 SHEET 9 OF 9 AS NECESSARY, INSTALL OVERHEAD SIGN ASSEMBLIES ON -Y1-, MURCHISON ROAD AND -Y2-, BRAGG BLVD.

STEP 4. USING ROADWAY STANDARD DRAWING 1101.02, SHEET 3 OF 9, PLACE FINAL PAVEMENT MARKING LINES AND SYMBOLS ON -Y1-, MURCHISON ROAD AND -Y2-, BRAGG BLVD. (SEE PAVEMENT MARKING PLANS) REMOVE CONFLICTING EXISTING MARKINGS. OPEN PROJECT UP TO TRAFFIC.

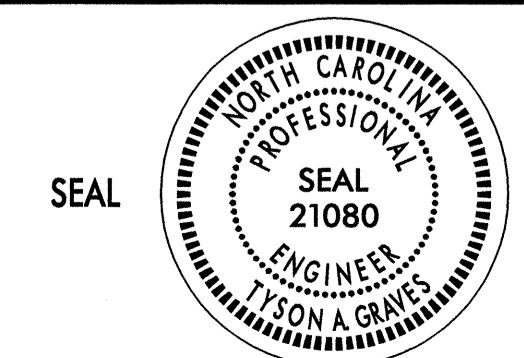
STEP 5. REMOVE ALL TRAFFIC CONTROL DEVICES EXCEPT FOR THE TYPE III BARRICADES AND TUBULAR MARKERS WHICH ARE TO REMAIN ON THE PROJECT.

7/31/2012
 P:\TRAFFIC\X-0002BB\X0002BB-TMP-Phasing-3.dgn
 Florence & Hutcheson

APPROVED:	DATE: 7-31-12	PHASING		
SEAL 	SCALE: NONE		REVISIONS	
	DATE: JUNE '12			
	DWG. BY: GEP			
	DESIGN BY: GEP			
REVIEWED BY: TAG			CADD FILE	

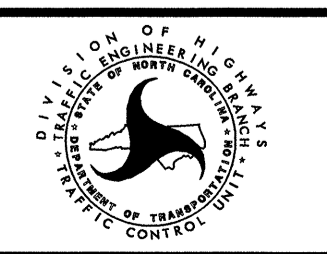


APPROVED: *[Signature]* DATE: 6-8-12



DETAIL

SCALE: NONE
 DATE: JUNE '12
 DWG. BY: GEP
 DESIGN BY: GEP
 REVIEWED BY: TAG



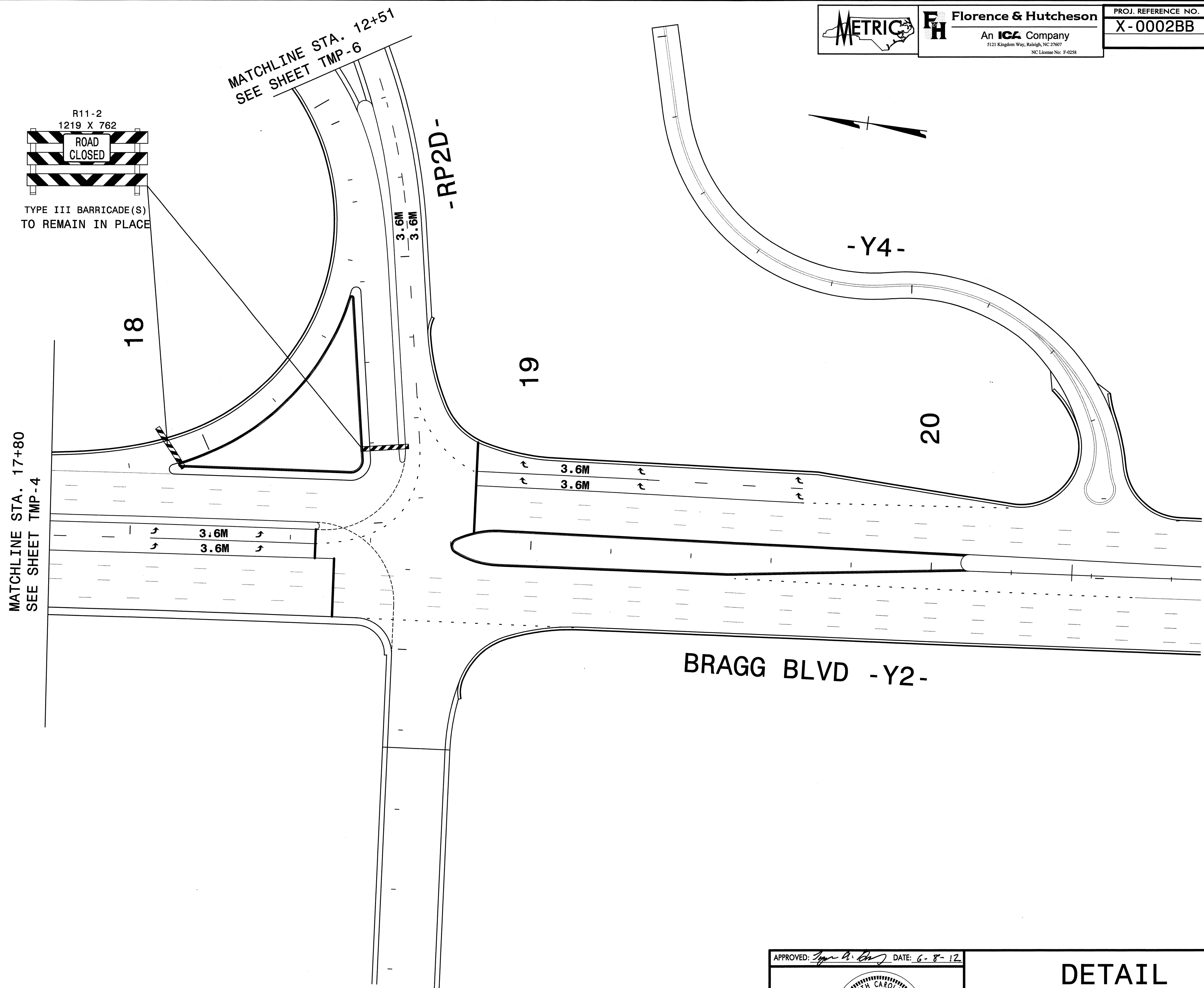
REVISIONS	

6/27/2012
 P:\TRAFFIC\X-0002BB\X-0002BB-TMP-TMP4.dgn
 Florence & Hutcheson



FH Florence & Hutcheson
 An ICA Company
 5121 Kingdom Way, Raleigh, NC 27607
 NC License No: F-4258

PROJ. REFERENCE NO.	SHEET NO.
X-0002BB	TMP-5



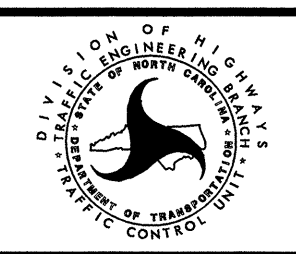
6/27/2012
 P:\TRAFFIC\X-0002bb\X-0002bb_tmp_5.dgn
 Florence & Hutcheson

APPROVED: *[Signature]* DATE: 6-8-12

SEAL

DETAIL

SCALE:	NONE
DATE:	JUNE, '12
DWG. BY:	GEP
DESIGN BY:	GEP
REVIEWED BY:	TAG

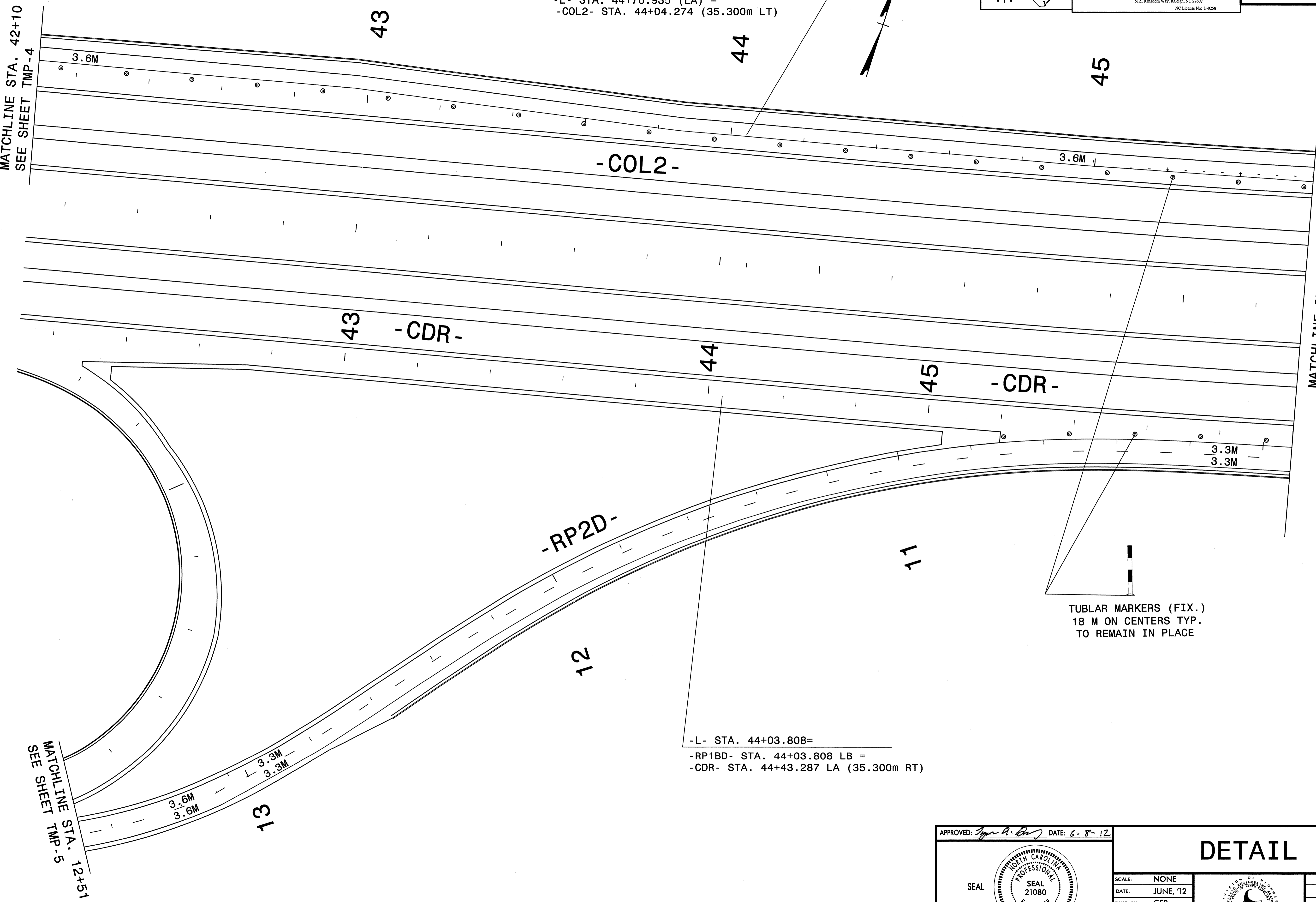


REVISIONS	

-L- STA. 44+04.273 (LB) =
 -L- STA. 44+76.935 (LA) =
 -COL2- STA. 44+04.274 (35.300m LT)

MATCHLINE STA. 42+10
 SEE SHEET TMP-4

MATCHLINE STA. 46+00
 SEE SHEET TMP-7

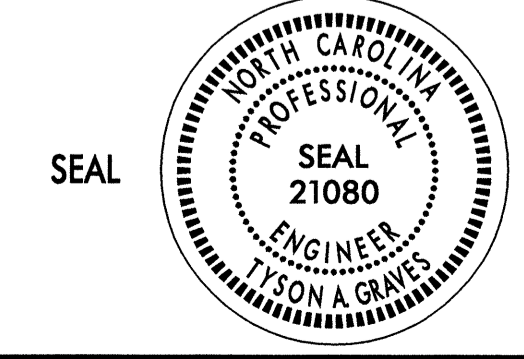


-L- STA. 44+03.808=
 -RP1BD- STA. 44+03.808 LB =
 -CDR- STA. 44+43.287 LA (35.300m RT)

MATCHLINE STA. 12+51
 SEE SHEET TMP-5

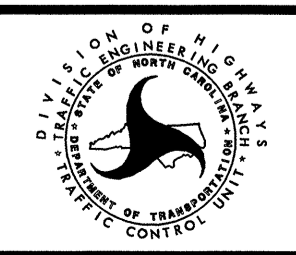
6/27/2012
 P:\TRAFFIC\X-0002BB\X0002BB-Tmp-TMP6.dgn
 Florence & Hutcheson

APPROVED: *[Signature]* DATE: 6-8-12

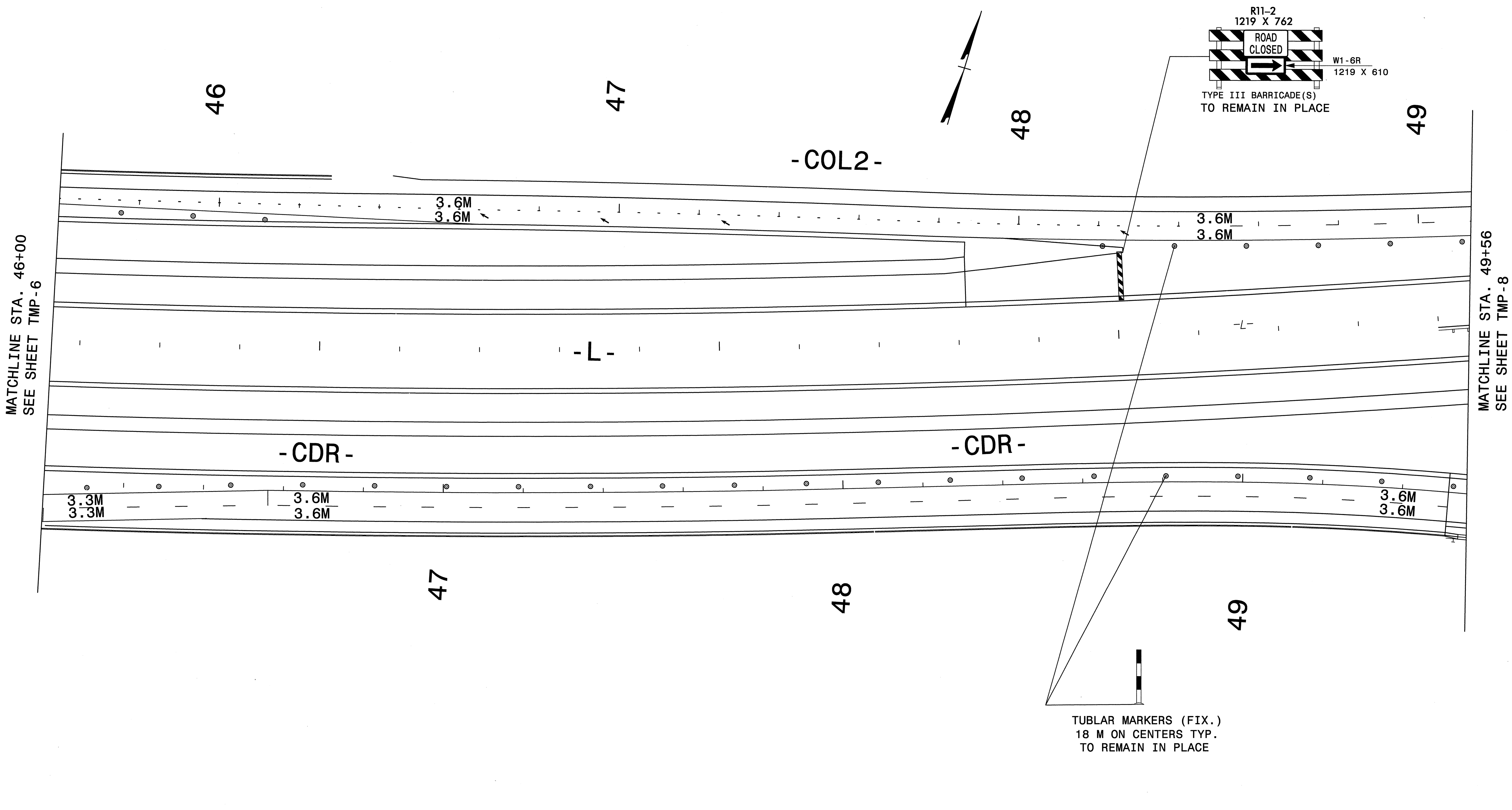


DETAIL

SCALE: NONE
 DATE: JUNE '12
 DWG. BY: GEP
 DESIGN BY: GEP
 REVIEWED BY: TAG



REVISIONS	



6/27/2012
 F:\TRAFFIC\X-0002bb\X0002bb_tmp TMP7.dgn
 Florence & Hutcheson

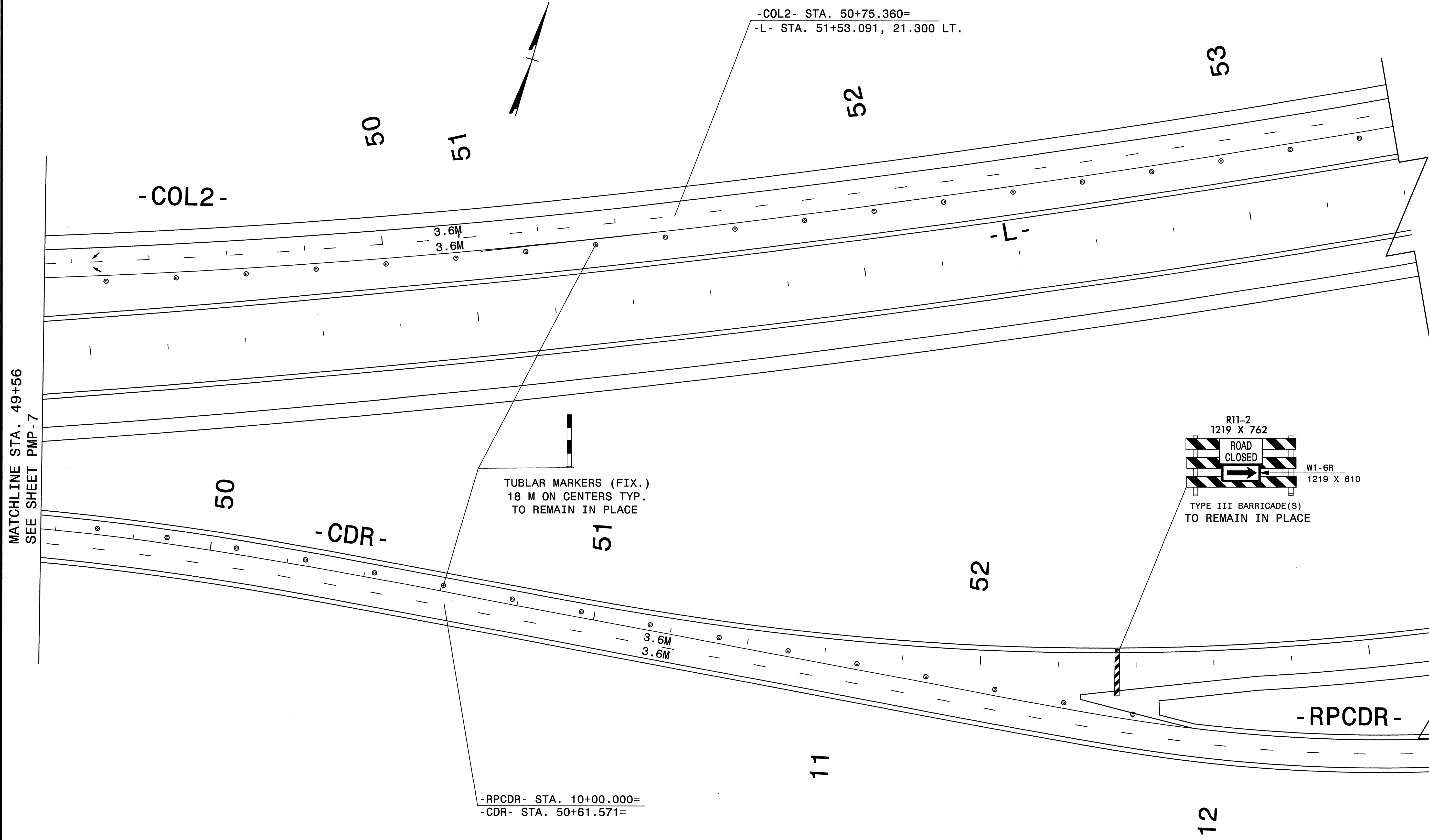
APPROVED: *[Signature]* DATE: **6-8-12**

SEAL

DETAIL

SCALE: NONE		REVISIONS
DATE: JUNE, '12		
DWG. BY: GEP		
DESIGN BY: GEP		
REVIEWED BY: TAG		

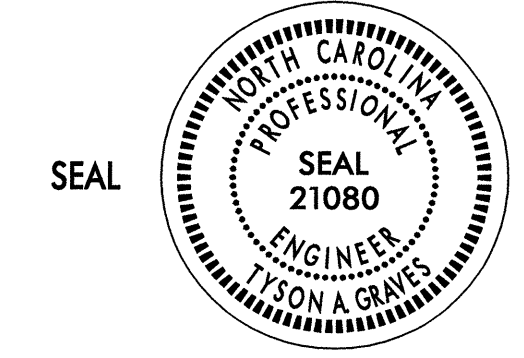
CADD FILE



TUBLAR MARKERS (FIX.)
 18 M ON CENTERS TYP.
 TO REMAIN IN PLACE

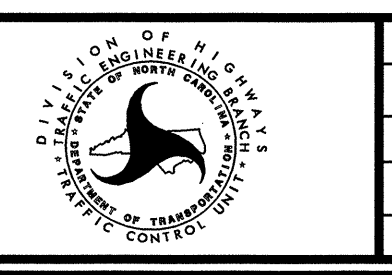
R11-2
 1219 X 762
 ROAD
 CLOSED
 W1-6R
 1219 X 610
 TYPE III BARRICADE(S)
 TO REMAIN IN PLACE

APPROVED: *[Signature]* DATE: 6-8-12

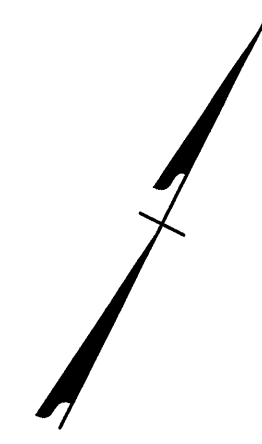
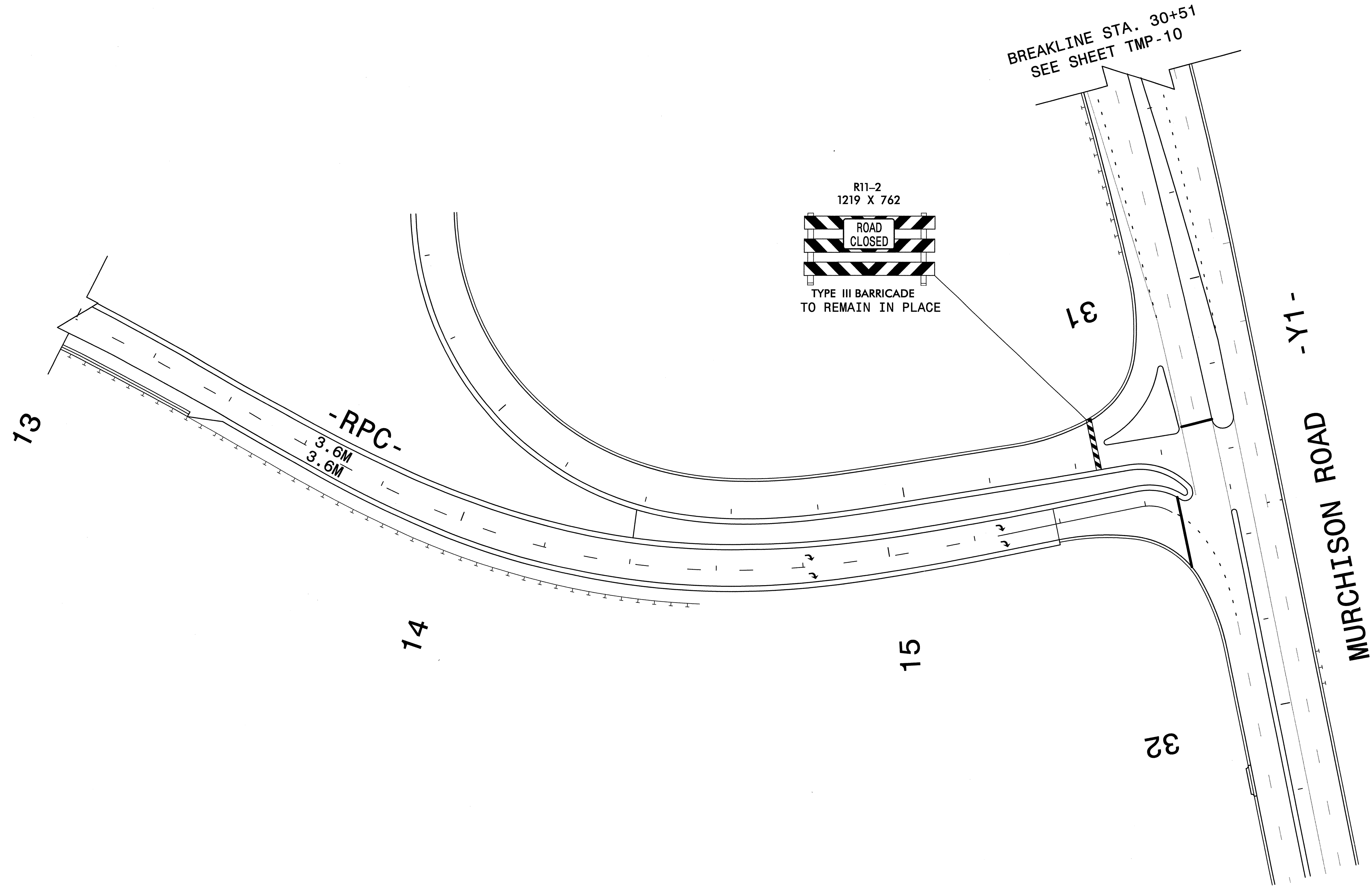


DETAIL

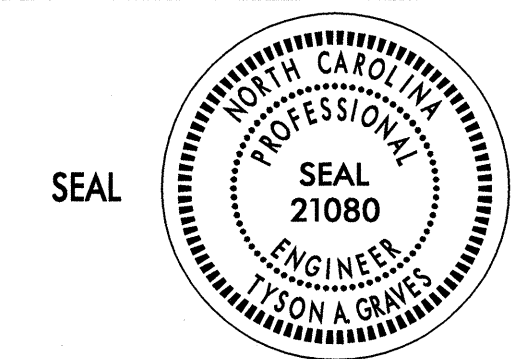
SCALE: NONE
 DATE: JUNE, '12
 DWG. BY: GEP
 DESIGN BY: GEP
 REVIEWED BY: TAG



REVISIONS	

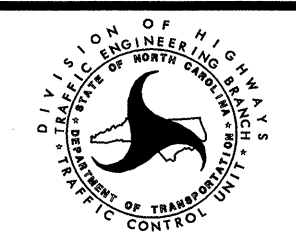


APPROVED: *[Signature]* DATE: 6-8-12

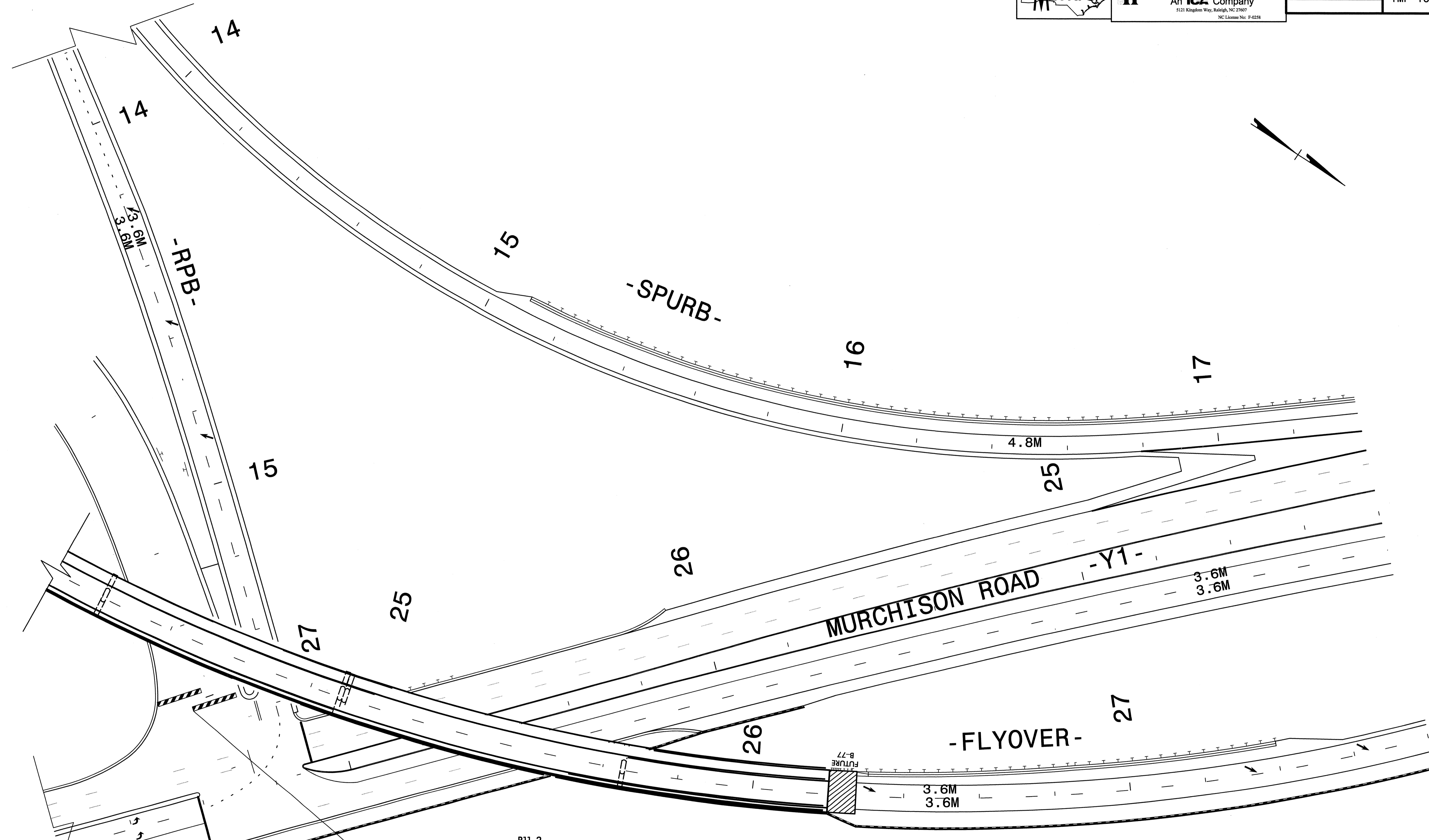


DETAIL

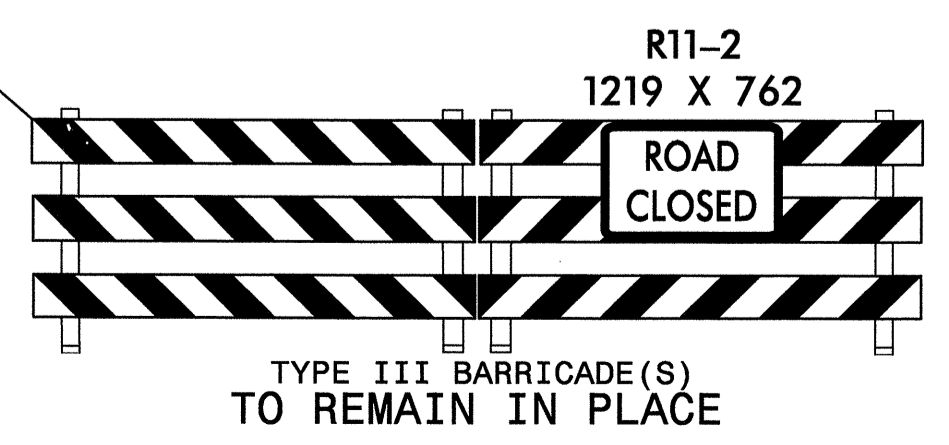
SCALE: NONE
 DATE: JUNE, '12
 DWG. BY: GEP
 DESIGN BY: GEP
 REVIEWED BY: TAG

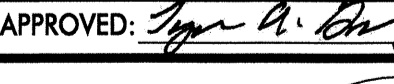

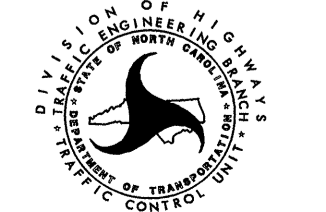


REVISIONS	



6/27/2012
 P:\TRAFFIC\X-0002bb\X0002bb.tmp_TMP10.dgn
 Florence & Hutcheson



APPROVED:  DATE: 6-8-12 	<h2>DETAIL</h2>	<table border="1"> <thead> <tr> <th colspan="2">REVISIONS</th> </tr> </thead> <tbody> <tr> <td> </td> <td> </td> </tr> <tr> <td> </td> <td> </td> </tr> </tbody> </table>	REVISIONS					
REVISIONS								
SCALE: NONE DATE: JUNE, 12 DWG. BY: GEP DESIGN BY: GEP REVIEWED BY: TAG		CAD FILE						