

PROJECT: 35579.1.1 ID: R-3405

STATE OF NORTH CAROLINA
DEPARTMENT OF TRANSPORTATION
DIVISION OF HIGHWAYS
GEOTECHNICAL ENGINEERING UNIT

CONTENTS

SHEET	DESCRIPTION
1	TITLE SHEET
2	LEGEND
3	SITE PLAN
4	PROFILE
5-6	CROSS SECTIONS
7-8	BORE LOGS

**STRUCTURE
SUBSURFACE INVESTIGATION**

PROJ. REFERENCE NO. R-3405 F.A. PROJ.

COUNTY WILKES

PROJECT DESCRIPTION NC 18 FROM SR 1002 (MOUNTAIN VIEW RD) TO SR 1717 (YELLOW BANKS RD.)

SITE DESCRIPTION RETAINING WALL FROM -L- STA. 118.50.36 TO STA. 120+07.32

CAUTION NOTICE

THE SUBSURFACE INFORMATION AND THE SUBSURFACE INVESTIGATION ON WHICH IT IS BASED WERE MADE FOR THE PURPOSE OF STUDY, PLANNING, AND DESIGN, AND NOT FOR CONSTRUCTION OR PAY PURPOSES. THE VARIOUS FIELD BORING LOGS, ROCK CORES, AND LOG TEST DATA AVAILABLE MAY BE REVIEWED OR INSPECTED IN RALEIGH BY CONTACTING THE N.C. DEPARTMENT OF TRANSPORTATION, GEOTECHNICAL ENGINEERING UNIT AT 1919 250-4088. NEITHER THE SUBSURFACE PLANS AND REPORTS, NOR THE FIELD BORING LOGS, ROCK CORES, OR LOG TEST DATA ARE PART OF THE CONTRACT.

GENERAL SOIL AND ROCK STRATA DESCRIPTIONS AND INDICATED BOUNDARIES ARE BASED ON A GEOTECHNICAL INTERPRETATION OF ALL AVAILABLE SUBSURFACE DATA AND MAY NOT NECESSARILY REFLECT THE ACTUAL SUBSURFACE CONDITIONS BETWEEN BORINGS OR BETWEEN SAMPLED STRATA WITHIN THE BOREHOLE. THE LABORATORY SAMPLE DATA AND THE IN SITU IN-PLACE TEST DATA CAN BE RELED ON ONLY TO THE DEGREE OF RELIABILITY INHERENT IN THE STANDARD TEST METHOD. THE OBSERVED WATER LEVELS OR SOIL MOISTURE CONDITIONS INDICATED IN THE SUBSURFACE INVESTIGATIONS ARE AS RECORDED AT THE TIME OF THE INVESTIGATION. THESE WATER LEVELS OR SOIL MOISTURE CONDITIONS MAY VARY CONSIDERABLY WITH TIME ACCORDING TO CLIMATIC CONDITIONS INCLUDING TEMPERATURES, PRECIPITATION, AND WIND, AS WELL AS OTHER NON-CLIMATIC FACTORS.

THE BIDDER OR CONTRACTOR IS CAUTIONED THAT DETAILS SHOWN ON THE SUBSURFACE PLANS ARE PRELIMINARY ONLY AND IN MANY CASES THE FINAL DESIGN DETAILS ARE DIFFERENT. FOR BIDDING AND CONSTRUCTION PURPOSES, REFER TO THE CONSTRUCTION PLANS AND DOCUMENTS FOR FINAL DESIGN INFORMATION ON THIS PROJECT. THE DEPARTMENT DOES NOT WARRANT OR GUARANTEE THE SUFFICIENCY OR ACCURACY OF THE INVESTIGATION MADE, NOR THE INTERPRETATIONS MADE, OR OPINION OF THE DEPARTMENT AS TO THE TYPE OF MATERIALS AND CONDITIONS TO BE ENCOUNTERED. THE BIDDER OR CONTRACTOR IS CAUTIONED TO MAKE SUCH INDEPENDENT SUBSURFACE INVESTIGATIONS AS HE DEEMS NECESSARY TO SATISFY HIMSELF AS TO CONDITIONS TO BE ENCOUNTERED ON THIS PROJECT. THE CONTRACTOR SHALL HAVE NO CLAIM FOR ADDITIONAL COMPENSATION OR FOR AN EXTENSION OF TIME FOR ANY REASON RESULTING FROM THE ACTUAL CONDITIONS ENCOUNTERED AT THE SITE DIFFERING FROM THOSE INDICATED IN THE SUBSURFACE INFORMATION.

PERSONNEL

D.C. ELLIOTT

C.J. COFFEY

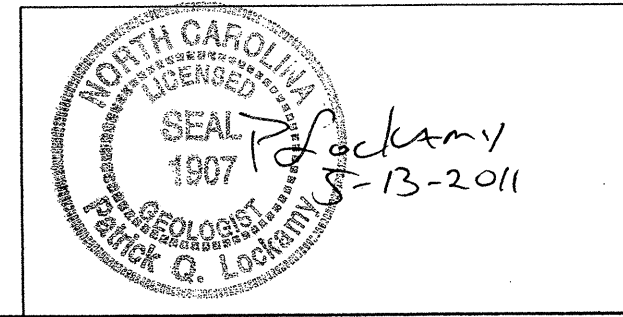
L.A. RIDDLE

INVESTIGATED BY P.Q. LOCKAMY

CHECKED BY W.D. FRYE

SUBMITTED BY W.D. FRYE

DATE 5.13.11



DRAWN BY:

NOTE - THE INFORMATION CONTAINED HEREIN IS NOT IMPLIED OR GUARANTEED BY THE N.C. DEPARTMENT OF TRANSPORTATION AS BEING ACCURATE NOR IT IS CONSIDERED TO BE PART OF THE PLANS, SPECIFICATIONS, OR CONTRACT FOR THE PROJECT.

NOTE - BY HAVING REQUESTED THIS INFORMATION THE CONTRACTOR SPECIFICALLY WAIVES ANY CLAIMS FOR INCREASED COMPENSATION OR EXTENSION OF TIME BASED ON DIFFERENCES BETWEEN THE CONDITIONS INDICATED HEREIN AND THE ACTUAL CONDITIONS AT THE PROJECT SITE.

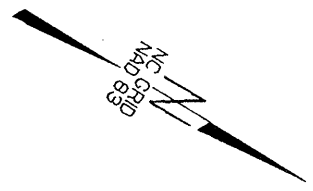
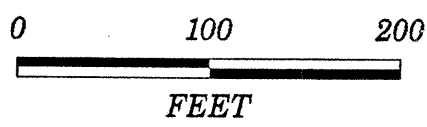
NORTH CAROLINA DEPARTMENT OF TRANSPORTATION
DIVISION OF HIGHWAYS
GEOTECHNICAL ENGINEERING UNIT

PROJECT REFERENCE NO. 35579.J.I R-3405 SHEET NO. 2 OF 8

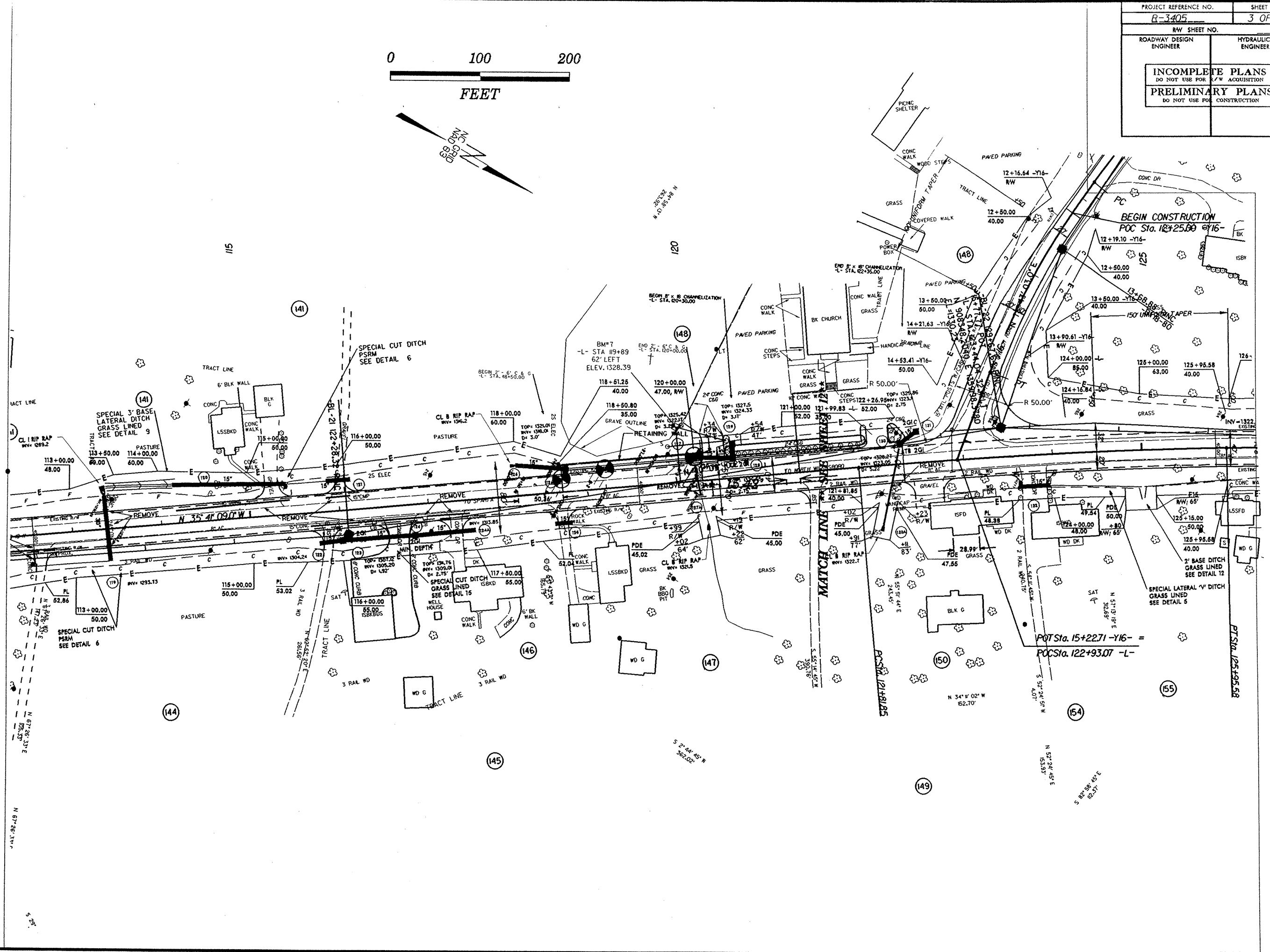
SUBSURFACE INVESTIGATION

SOIL AND ROCK LEGEND, TERMS, SYMBOLS, AND ABBREVIATIONS

SOIL DESCRIPTION		GRADATION		ROCK DESCRIPTION		TERMS AND DEFINITIONS	
<p>SOIL IS CONSIDERED TO BE THE UNCONSOLIDATED, SEMI-CONSOLIDATED, OR WEATHERED EARTH MATERIALS THAT CAN BE PENETRATED WITH A CONTINUOUS FLIGHT POWER AUGER, AND YIELD LESS THAN 100 BLOWS PER FOOT ACCORDING TO STANDARD PENETRATION TEST (AASHTO T206, ASTM D-1586). SOIL CLASSIFICATION IS BASED ON THE AASHTO SYSTEM. BASIC DESCRIPTIONS GENERALLY SHALL INCLUDE: CONSISTENCY, COLOR, TEXTURE, MOISTURE, AASHTO CLASSIFICATION, AND OTHER PERTINENT FACTORS SUCH AS MINERALOGICAL COMPOSITION, ANGULARITY, STRUCTURE, PLASTICITY, ETC. EXAMPLE:</p> <p style="text-align: center;"><i>VERY STIFF, GRAY, SILTY CLAY, MOST WITH INTERBEDDED FINE SAND LAYERS, MEDIUM PLASTIC, A-7-6</i></p>		<p>WELL GRADED - INDICATES A GOOD REPRESENTATION OF PARTICLE SIZES FROM FINE TO COARSE. UNIFORM - INDICATES THAT SOIL PARTICLES ARE ALL APPROXIMATELY THE SAME SIZE. (ALSO POORLY GRADED) GAP-GRADED - INDICATES A MIXTURE OF UNIFORM PARTICLES OF TWO OR MORE SIZES.</p> <p style="text-align: center;">ANGULARITY OF GRAINS</p> <p>THE ANGULARITY OR ROUNDNESS OF SOIL GRAINS IS DESIGNATED BY THE TERMS: ANGULAR, SUBANGULAR, SUBROUNDED, OR ROUNDED.</p>		<p>HARD ROCK IS NON-COASTAL PLAIN MATERIAL THAT IF TESTED, WOULD YIELD SPT REFUSAL. AN INFERRED ROCK LINE INDICATES THE LEVEL AT WHICH NON-COASTAL PLAIN MATERIAL WOULD YIELD SPT REFUSAL. SPT REFUSAL IS PENETRATION BY A SPLIT SPOON SAMPLER EQUAL TO OR LESS THAN 60 BLOWS, IN NON-COASTAL PLAIN MATERIAL. THE TRANSITION BETWEEN SOIL AND ROCK IS OFTEN REPRESENTED BY A ZONE OF WEATHERED ROCK. ROCK MATERIALS ARE TYPICALLY DIVIDED AS FOLLOWS:</p>		<p>ALLUVIUM (ALLUV.) - SOILS THAT HAVE BEEN TRANSPORTED BY WATER. ADUIFIER - A WATER BEARING FORMATION OR STRATA. ARENACEOUS - APPLIED TO ROCKS THAT HAVE BEEN DERIVED FROM SAND OR THAT CONTAIN SAND. ARGILLACEOUS - APPLIED TO ALL ROCKS OR SUBSTANCES COMPOSED OF CLAY MINERALS, OR HAVING A NOTABLE PROPORTION OF CLAY IN THEIR COMPOSITION, AS SHALE, SLATE, ETC. ARTESIAN - GROUND WATER THAT IS UNDER SUFFICIENT PRESSURE TO RISE ABOVE THE LEVEL AT WHICH IT IS ENCOUNTERED, BUT WHICH DOES NOT NECESSARILY RISE TO OR ABOVE THE GROUND SURFACE. CALCAREOUS (CALC.) - SOILS THAT CONTAIN APPRECIABLE AMOUNTS OF CALCIUM CARBONATE. COLLUVIUM - ROCK FRAGMENTS MIXED WITH SOIL DEPOSITED BY GRAVITY ON SLOPE OR AT BOTTOM OF SLOPE. CORE RECOVERY (REC.) - TOTAL LENGTH OF ALL MATERIAL RECOVERED IN THE CORE BARREL DIVIDED BY TOTAL LENGTH OF CORE RUN AND EXPRESSED AS A PERCENTAGE. DIKE - A TABULAR BODY OF IGNEOUS ROCK THAT CUTS ACROSS THE STRUCTURE OF ADJACENT ROCKS OR CUTS MASSIVE ROCK. DIP - THE ANGLE AT WHICH A STRATUM OR ANY PLANAR FEATURE IS INCLINED FROM THE HORIZONTAL. DIP DIRECTION (DIP AZIMUTH) - THE DIRECTION OR BEARING OF THE HORIZONTAL TRACE OF THE LINE OF DIP, MEASURED CLOCKWISE FROM NORTH. FAULT - A FRACTURE OR FRACTURE ZONE ALONG WHICH THERE HAS BEEN DISPLACEMENT OF THE SIDES RELATIVE TO ONE ANOTHER PARALLEL TO THE FRACTURE. FISSILE - A PROPERTY OF SPLITTING ALONG CLOSELY SPACED PARALLEL PLANES. FLOAT - ROCK FRAGMENTS ON SURFACE NEAR THEIR ORIGINAL POSITION AND DISLODGED FROM PARENT MATERIAL. FLOOD PLAIN (FP) - LAND BORDERING A STREAM, BUILT OF SEDIMENTS DEPOSITED BY THE STREAM. FORMATION (FM) - A MAPPABLE GEOLOGIC UNIT THAT CAN BE RECOGNIZED AND TRACED IN THE FIELD. JOINT - FRACTURE IN ROCK ALONG WHICH NO APPRECIABLE MOVEMENT HAS OCCURRED. LEDGE - A SHELF-LIKE RIDGE OR PROJECTION OF ROCK WHOSE THICKNESS IS SMALL COMPARED TO ITS LATERAL EXTENT. LENS - A BODY OF SOIL OR ROCK THAT THINS OUT IN ONE OR MORE DIRECTIONS. MOTTLED (MOT.) - IRREGULARLY MARKED WITH SPOTS OF DIFFERENT COLORS. MOTTLING IN SOILS USUALLY INDICATES POOR AERATION AND LACK OF GOOD DRAINAGE. PERCHED WATER - WATER MAINTAINED ABOVE THE NORMAL GROUND WATER LEVEL BY THE PRESENCE OF AN INTERVENING IMPERVIOUS STRATUM. RESIDUAL (RES.) SOIL - SOIL FORMED IN PLACE BY THE WEATHERING OF ROCK. ROCK QUALITY DESIGNATION (RQD) - A MEASURE OF ROCK QUALITY DESCRIBED BY TOTAL LENGTH OF ROCK SEGMENTS EQUAL TO OR GREATER THAN 4 INCHES DIVIDED BY THE TOTAL LENGTH OF CORE RUN AND EXPRESSED AS A PERCENTAGE. SAPROLITE (SAP.) - RESIDUAL SOIL THAT RETAINS THE RELIC STRUCTURE OR FABRIC OF THE PARENT ROCK. SILL - AN INTRUSIVE BODY OF IGNEOUS ROCK OF APPROXIMATELY UNIFORM THICKNESS AND RELATIVELY THIN COMPARED WITH ITS LATERAL EXTENT, THAT HAS BEEN EMPLACED PARALLEL TO THE BEDDING OR SCHISTOSITY OF THE INTRUDED ROCKS. SLICKENSIDE - POLISHED AND STRIATED SURFACE THAT RESULTS FROM FRICTION ALONG A FAULT OR SLIP PLANE. STANDARD PENETRATION TEST (PENETRATION RESISTANCE) (SPT) - NUMBER OF BLOWS (N OR BPF) OF A 140 LB. HAMMER FALLING 30 INCHES REQUIRED TO PRODUCE A PENETRATION OF 1 FOOT INTO SOIL WITH A 2 INCH OUTSIDE DIAMETER SPLIT SPOON SAMPLER. SPT REFUSAL IS PENETRATION EQUAL TO OR LESS THAN 60 BLOWS PER FOOT. STRATA CORE RECOVERY (SREC) - TOTAL LENGTH OF STRATA MATERIAL RECOVERED DIVIDED BY TOTAL LENGTH OF STRATUM AND EXPRESSED AS A PERCENTAGE. STRATA ROCK QUALITY DESIGNATION (SRQD) - A MEASURE OF ROCK QUALITY DESCRIBED BY TOTAL LENGTH OF ROCK SEGMENTS WITHIN A STRATUM EQUAL TO OR GREATER THAN 4 INCHES DIVIDED BY THE TOTAL LENGTH OF STRATA AND EXPRESSED AS A PERCENTAGE. TOPSOIL (TS) - SURFACE SOILS USUALLY CONTAINING ORGANIC MATTER.</p>	
SOIL LEGEND AND AASHTO CLASSIFICATION		MINERALOGICAL COMPOSITION		WEATHERING			
<p>GENERAL CLASS. GRANULAR MATERIALS (<= 35% PASSING #200) SILT-CLAY MATERIALS (> 35% PASSING #200) ORGANIC MATERIALS</p> <p>GROUP CLASS. A-1, A-3, A-2, A-4, A-5, A-6, A-7, A-1, A-2, A-3, A-4, A-5, A-6, A-7</p> <p>SYMBOL</p> <p>% PASSING #10, #40, #200</p> <p>LIQUID LIMIT, PLASTIC INDEX, GROUP INDEX</p> <p>USUAL TYPES OF MAJOR MATERIALS: STONE FRAGS, GRAVEL, SAND, FINE SAND, SILTY OR CLAYEY GRAVEL AND SAND, SILTY SOILS, CLAYEY SOILS</p> <p>GENERATING AS A SUBGRADE: EXCELLENT TO GOOD, FAIR TO POOR, FAIR TO POOR, POOR, UNSUITABLE</p> <p>PI OF A-7-5 SUBGROUP IS <= LL - 30; PI OF A-7-6 SUBGROUP IS > LL - 30</p>		<p>MINERAL NAMES SUCH AS QUARTZ, FELDSPAR, MICA, TALC, KAOLIN, ETC. ARE USED IN DESCRIPTIONS WHENEVER THEY ARE CONSIDERED OF SIGNIFICANCE.</p> <p style="text-align: center;">COMPRESSIBILITY</p> <p>SLIGHTLY COMPRESSIBLE, MODERATELY COMPRESSIBLE, HIGHLY COMPRESSIBLE</p> <p style="text-align: center;">PERCENTAGE OF MATERIAL</p> <p>ORGANIC MATERIAL, GRANULAR SOILS, SILT-CLAY SOILS, OTHER MATERIAL</p> <p>TRACE OF ORGANIC MATTER, LITTLE ORGANIC MATTER, MODERATELY ORGANIC, HIGHLY ORGANIC</p> <p style="text-align: center;">GROUND WATER</p> <p>WATER LEVEL IN BORE HOLE IMMEDIATELY AFTER DRILLING, STATIC WATER LEVEL AFTER 24 HOURS, PERCHED WATER, SATURATED ZONE, OR WATER BEARING STRATA, SPRING OR SEEP</p>		<p>WEATHERED ROCK (WR), CRYSTALLINE ROCK (CR), NON-CRYSTALLINE ROCK (NCR), COASTAL PLAIN SEDIMENTARY ROCK (CP)</p> <p>FRESH, VERY SLIGHT (V SL.), SLIGHT (SL.), MODERATE (MOD.), MODERATELY SEVERE (MOD. SEV.), SEVERE (SEV.), VERY SEVERE (V SEV.), COMPLETE</p>			
CONSISTENCY OR DENSENESS		MISCELLANEOUS SYMBOLS		ROCK HARDNESS			
<p>PRIMARY SOIL TYPE, COMPACTNESS OR CONSISTENCY, RANGE OF STANDARD PENETRATION RESISTANCE (N-VALUE), RANGE OF UNCONFINED COMPRESSIVE STRENGTH (TONS/FT²)</p>		<p>ROADWAY EMBANKMENT (RE) WITH SOIL DESCRIPTION, SOIL SYMBOL, ARTIFICIAL FILL (AF) OTHER THAN ROADWAY EMBANKMENT, INFERRED SOIL BOUNDARY, INFERRED ROCK LINE, ALLUVIAL SOIL BOUNDARY, DIP & DIP DIRECTION OF ROCK STRUCTURES, SOUNDING ROD</p>		<p>VERY HARD, HARD, MODERATELY HARD, MEDIUM HARD, SOFT, VERY SOFT</p>			
TEXTURE OR GRAIN SIZE		ABBREVIATIONS		EQUIPMENT USED ON SUBJECT PROJECT			
<p>U.S. STD. SIEVE SIZE OPENING (MM), BOULDER (BLDR.), COBBLE (COB.), GRAVEL (GR.), COARSE SAND (CSE, SD.), FINE SAND (F SD.), SILT (SL.), CLAY (CL.)</p>		<p>AR - AUGER REFUSAL, BT - BORING TERMINATED, CL - CLAY, CPT - CONE PENETRATION TEST, CSE - COARSE, DMT - DILATOMETER TEST, DPT - DYNAMIC PENETRATION TEST, e - VOID RATIO, F - FINE, FOSS. - FOSSILIFEROUS, FRAC. - FRACTURED, FRACTURES, FRAGS. - FRAGMENTS, HI - HIGHLY, MD. - MEDIUM, MICA - MICA, MICACEOUS, MOD. - MODERATELY, NP - NON PLASTIC, ORG. - ORGANIC, DPT - DYNAMIC PENETRATION TEST, PMT - PRESSUREMETER TEST, SAP. - SAPROLITIC, SD. - SAND, SANDY, SL. - SILT, SILTY, SPT - SPT N-VALUE, TCR - TRICONE REFUSAL</p>		<p>DRILL UNITS: MOBILE B-51, BK-51, CME-45C, CME-550, PORTABLE HOIST</p> <p>ADVANCING TOOLS: CLAY BITS, 6" CONTINUOUS FLIGHT AUGER, 8" HOLLOW AUGERS, HARD FACED FINGER BITS, TUNG-CARBIDE INSERTS, CASING w/ ADVANCER, TRICONE STEEL TEETH, TRICONE TUNG-CARB., CORE BIT</p> <p>HAMMER TYPE: AUTOMATIC, MANUAL</p> <p>CORE SIZE: B, N, H</p> <p>HAND TOOLS: POST HOLE DIGGER, HAND AUGER, SOUNDING ROD, VANE SHEAR TEST</p>			
SOIL MOISTURE - CORRELATION OF TERMS		FRACTURE SPACING		BEDDING			
<p>SOIL MOISTURE SCALE (ATTERBERG LIMITS), FIELD MOISTURE DESCRIPTION, GUIDE FOR FIELD MOISTURE DESCRIPTION</p> <p>LL - LIQUID LIMIT, PL - PLASTIC LIMIT, OM - OPTIMUM MOISTURE, SL - SHRINKAGE LIMIT</p> <p>- SATURATED - (SAT.) USUALLY LIQUID; VERY WET, USUALLY FROM BELOW THE GROUND WATER TABLE</p> <p>- WET - (W) SEMISOLID; REQUIRES DRYING TO ATTAIN OPTIMUM MOISTURE</p> <p>- MOIST - (M) SOLID; AT OR NEAR OPTIMUM MOISTURE</p> <p>- DRY - (D) REQUIRES ADDITIONAL WATER TO ATTAIN OPTIMUM MOISTURE</p>		<p>VERY WIDE, WIDE, MODERATELY CLOSE, CLOSE, VERY CLOSE</p>		<p>VERY THICKLY BEDDED, THICKLY BEDDED, THINLY BEDDED, VERY THINLY BEDDED, THICKLY LAMINATED, THINLY LAMINATED</p>			
PLASTICITY		INDURATION		INDURATION			
<p>NONPLASTIC, LOW PLASTICITY, MED. PLASTICITY, HIGH PLASTICITY</p> <p>PLASTICITY INDEX (PI), DRY STRENGTH</p>		<p>FOR SEDIMENTARY ROCKS, INDURATION IS THE HARDENING OF THE MATERIAL BY CEMENTING, HEAT, PRESSURE, ETC.</p> <p>FRIABLE, MODERATELY INDURATED, INDURATED, EXTREMELY INDURATED</p>		<p>RUBBING WITH FINGER FREES NUMEROUS GRAINS; GENTLE BLOW BY HAMMER DISINTEGRATES SAMPLE. GRAINS CAN BE SEPARATED FROM SAMPLE WITH STEEL PROBE; BREAKS EASILY WHEN HIT WITH HAMMER. GRAINS ARE DIFFICULT TO SEPARATE WITH STEEL PROBE; DIFFICULT TO BREAK WITH HAMMER. SHARP HAMMER BLOWS REQUIRED TO BREAK SAMPLE; SAMPLE BREAKS ACROSS GRAINS.</p>			
COLOR							
<p>DESCRIPTIONS MAY INCLUDE COLOR OR COLOR COMBINATIONS (TAN, RED, YELLOW-BROWN, BLUE-GRAY). MODIFIERS SUCH AS LIGHT, DARK, STREAKED, ETC. ARE USED TO DESCRIBE APPEARANCE.</p>							



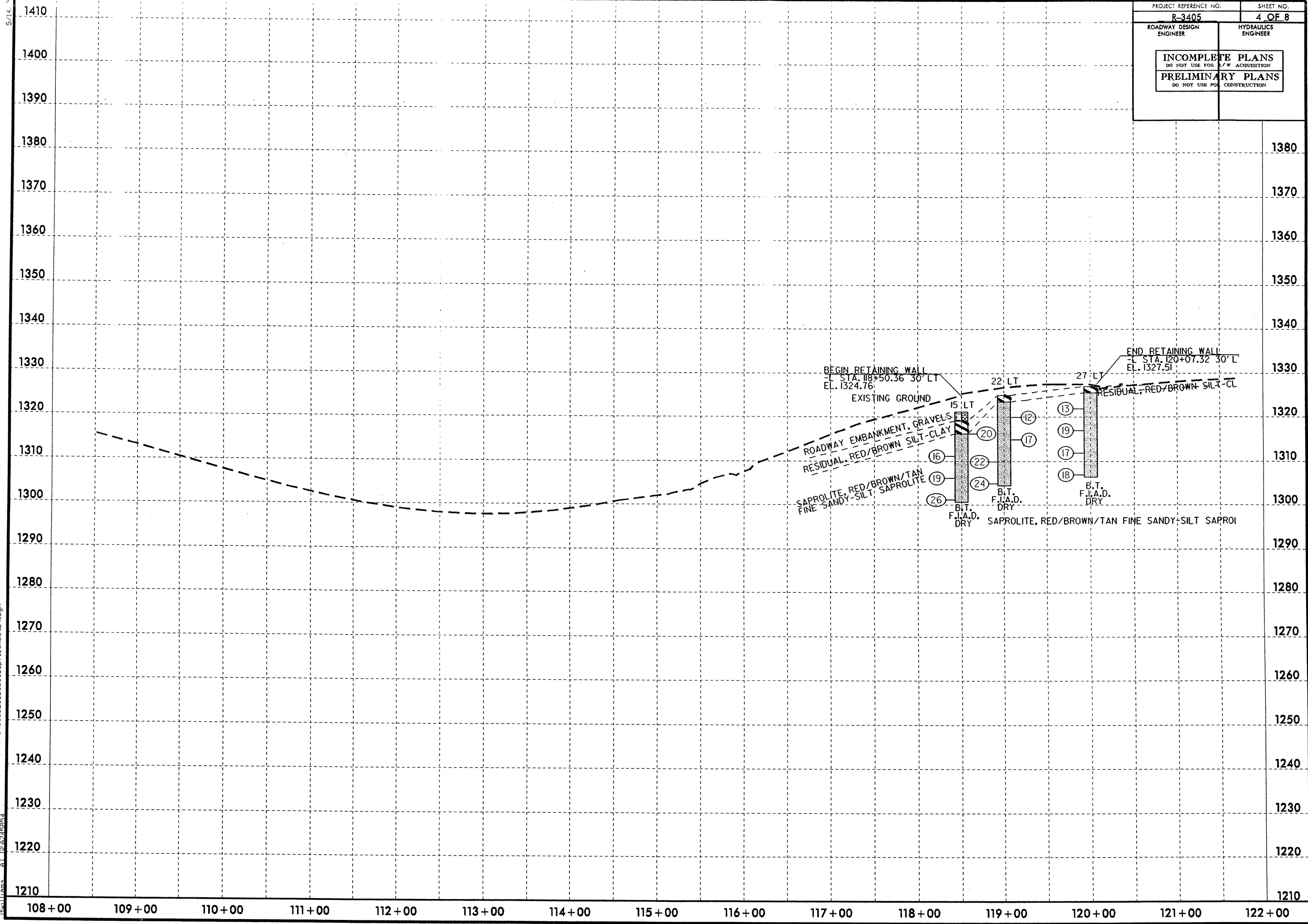
MATCH LINE ** SEE SHEET 10**



13 MAY 2011 10:48:40
 D:\PROJECTS\2011\3405\CADD\GEOTECH\PlanPr\of\13405_GEO_p.sh11_060530.dgn
 11/11/11

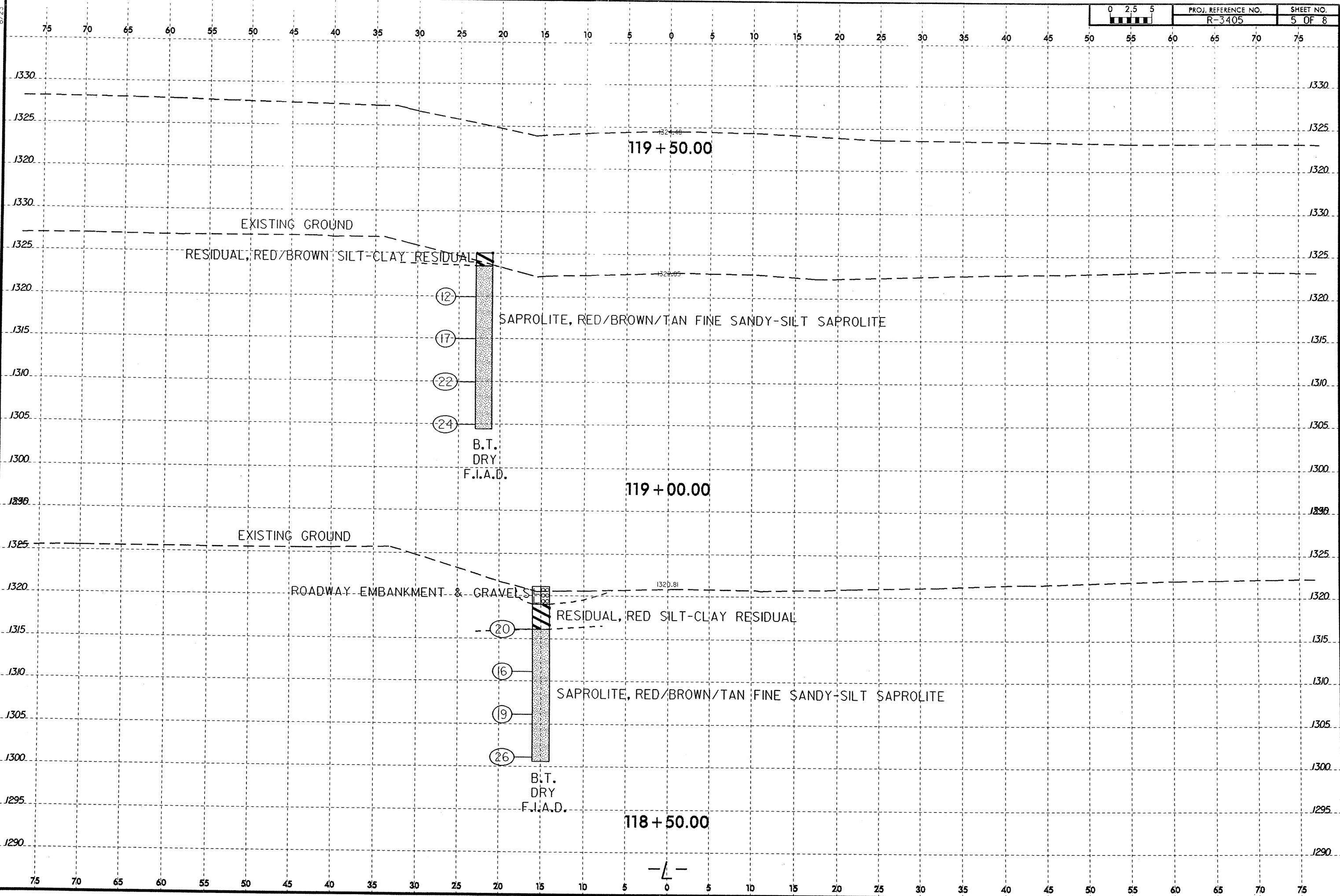
5/14/23

PROJECT REFERENCE NO. R-3405	SHEET NO. 4 OF 8
ROADWAY DESIGN ENGINEER	HYDRAULICS ENGINEER
INCOMPLETE PLANS DO NOT USE FOR ACQUISITION	
PRELIMINARY PLANS DO NOT USE FOR CONSTRUCTION	



I:\MAY-2011\1544\Projects\R3405\CADD_GEO\TECH\Plan\Pro\R-3405_GEO_060630.pfl_shee2.dgn

8/23
13-MAY-2011 14:12
D:\Projects\13405\CA00_GEO\TECH\Xsec_VR3405_Geo_xsi.dgn
13williams AT GE245854



-L-

WBS 35579.1.1		TIP R-3405		COUNTY WILKES		GEOLOGIST Elliott, D. C.										
SITE DESCRIPTION N.C. 18 north of Wilkesboro from S.R.-1002 to S.R.-1717 @ Baptist Home Church							GROUND WTR (ft)									
BORING NO. B-3		STATION 20+00		OFFSET 27 ft LT		ALIGNMENT -L-										
COLLAR ELEV. 1,327.0 ft		TOTAL DEPTH 20.5 ft		NORTHING 908,069		EASTING 1,359,401										
DRILL RIG/HAMMER EFF./DATE AFO0071 CME-550X 72% 09/03/2009				DRILL METHOD H.S. Augers		HAMMER TYPE Automatic										
DRILLER Coffey, Jr., C.		START DATE 02/22/11		COMP. DATE 02/22/11		SURFACE WATER DEPTH N/A										
ELEV (ft)	DRIVE ELEV (ft)	DEPTH (ft)	BLOW COUNT			BLOWS PER FOOT					SAMP. NO.	MOI	LOG	SOIL AND ROCK DESCRIPTION	DEPTH (ft)	
			0.5ft	0.5ft	0.5ft	0	25	50	75	100						
1330																
															1,327.0	GROUND SURFACE 0.0
															1,325.6	RESIDUAL Red/Brown Silt-Clay Residual 1.4
		1,323.0	4.0	4	6	7										
1320																
		1,318.0	9.0	5	9	10										
1315																
		1,313.0	14.0	5	7	10										
1310																
		1,308.0	19.0	6	8	10										
															1,306.5	20.5
Boring Terminated at Elevation 1,306.5 ft in Saprolite "Fine Sandy-Silt"																
All elevations assumed																

NCDOT BORE SINGLE R-3405.GPJ NC_DOT.GDT 5/13/11