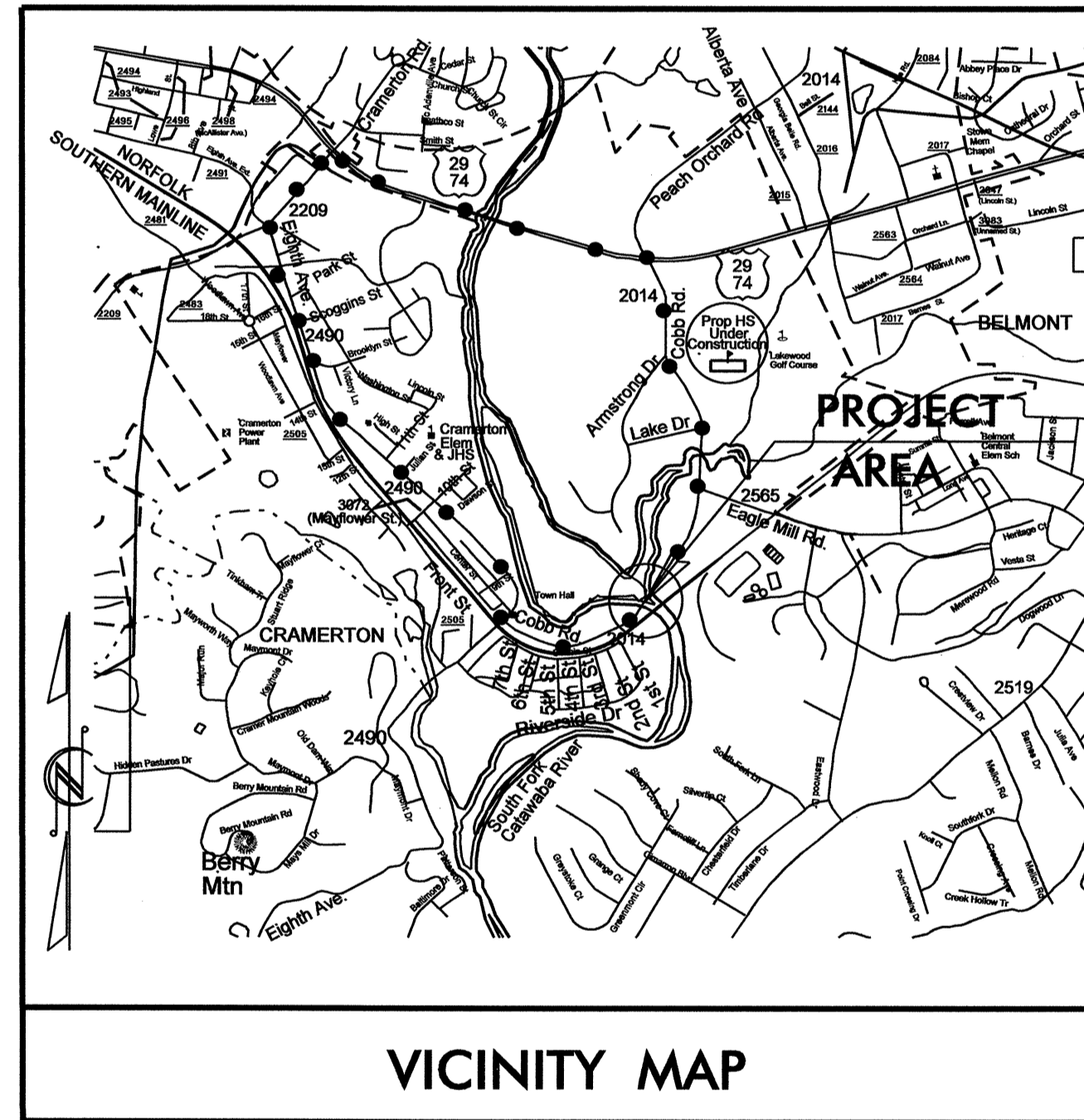
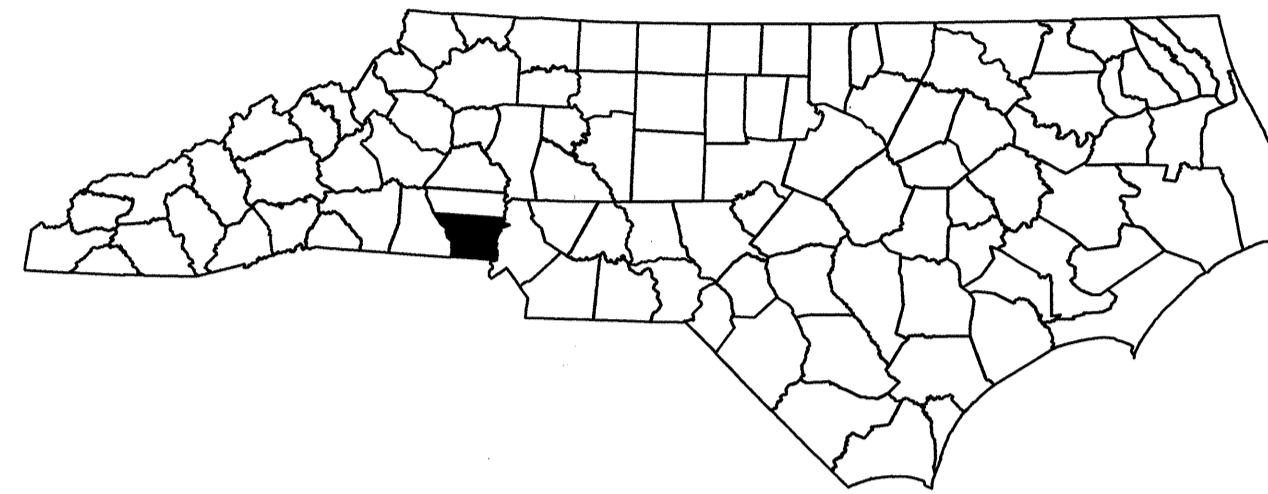


STATE OF NORTH CAROLINA
DIVISION OF HIGHWAYS

TRANSPORTATION MANAGEMENT PLAN

GASTON COUNTY



VICINITY MAP

OFF-SITE DETOUR ROUTE ●●●●

**LOCATION: BRIDGE NO. 6 OVER THE SOUTH FORK CATAWBA RIVER
ON SR 2014 (LAKEWOOD RD)**

INDEX OF SHEETS

SHEET NO.	TITLE
TMP-1	TITLE SHEET, AND INDEX OF SHEETS
TMP-1A	LIST OF APPLICABLE ROADWAY STANDARD DRAWINGS, LEGEND, AND TEMPORARY PAVEMENT MARKING
TMP-1B	TRANSPORTATION OPERATIONS PLAN AND PROJECT NOTES
TMP-2A	DETOUR SIGN DETAIL
TMP-3	TEMPORARY TRAFFIC CONTROL PHASING AND DETAIL

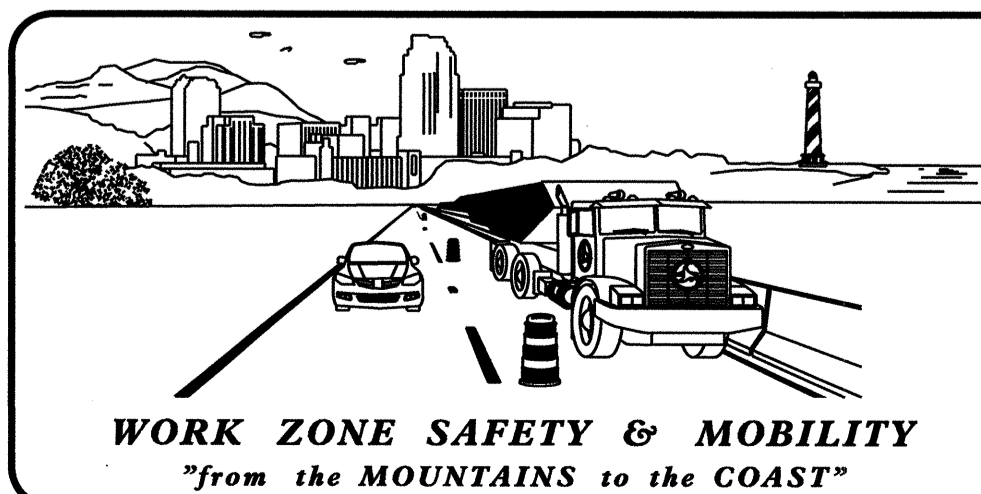
SHEET NO.

TMP-1

B-4752

TIP PROJECT:

24-FEB-2012 11:25 \\ydc1\dfs\91244752\TrafficControl\B4752-TCP\B4752-TC-TMP-01.dgn sngreen AT 12:44:33



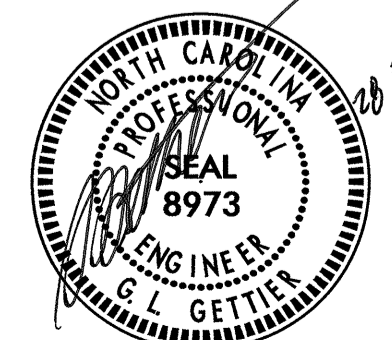
N.C.D.O.T. WORK ZONE TRAFFIC CONTROL
1580 MAIL SERVICE CENTER (MSC) RALEIGH, NC 27699-1580
1020 BIRCH RIDGE DRIVE, RALEIGH, NC 27610 (DELIVERY)
PHONE: (919) 250-4094 FAX: (919) 250-4098

J. S. BOURNE, P.E. STATE TRAFFIC MANAGEMENT ENGINEER
G. L. GETTIER, P.E. TRAFFIC CONTROL PROJECT ENGINEER
J. W. GILSTRAP *JWG* TRAFFIC CONTROL PROJECT DESIGN ENGINEER
S. GREEN TRAFFIC CONTROL DESIGN ENGINEER



APPROVED: _____
DATE: _____

SEAL



ROADWAY STANDARD DRAWINGS

THE FOLLOWING ROADWAY STANDARDS AS SHOWN IN "ROADWAY STANDARD DRAWINGS" - PROJECT SERVICES UNIT - N.C. DEPARTMENT OF TRANSPORTATION - RALEIGH, N.C., DATED JANUARY 2012 ARE APPLICABLE TO THIS PROJECT AND BY REFERENCE HEREBY ARE CONSIDERED A PART OF THESE PLANS:

<u>STD. NO.</u>	<u>TITLE</u>
1101.03	TEMPORARY ROAD CLOSURES
1101.05	WORK ZONE VEHICLE ACCESSES
1101.11	TRAFFIC CONTROL DESIGN TABLES
1110.01	STATIONARY WORK ZONE SIGNS
1130.01	DRUMS
1145.01	BARRICADES - TYPE III

LEGEND

GENERAL

- DIRECTION OF TRAFFIC FLOW
- NORTH ARROW

TRAFFIC CONTROL DEVICES

- BARRICADE (TYPE III)
- CONE
- DRUM SKINNY DRUM


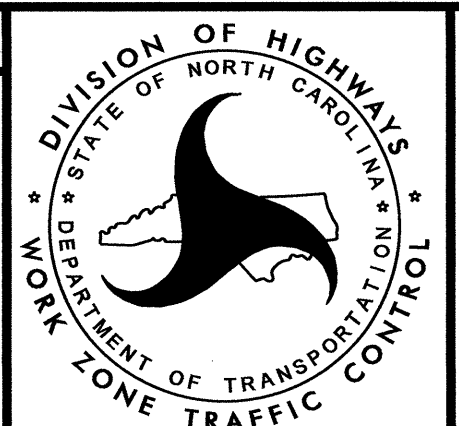
TEMPORARY SIGNING

- STATIONARY SIGN

TEMPORARY PAVEMENT MARKING

NONE

24-FEB-2012 11:05
 C:\cort\p01\TIP\Projects-B\B4752\TrafficControl\TCP\B4752-TC-TMP-01A.dgn
 sngreen AT 12:44:33

APPROVED: _____ DATE: _____ <div style="text-align: center;">  SEAL </div>	<div style="text-align: center;">  </div>	ROADWAY STANDARD DRAWINGS & LEGEND
---	--	---

TRANSPORTATION OPERATIONS

CONSTRUCTION

REMOVE AND REPLACE EXISTING STRUCTURE AND APPROACHES ALONG THE EXISTING ROADWAY ALIGNMENT AS SHOWN IN THE CONSTRUCTION PLANS.

TMP DESIGN PARAMETERS

TRAFFIC WILL BE DETOURED OFFSITE DURING THE CONSTRUCTION PERIOD.

THE OFFSITE DETOUR WILL INCLUDE SR 2490, SR 2209 AND US 29/74. (SEE SHEET TMP-3).

TRAFFIC WILL NEED TO BE MAINTAINED TO THE EXISTING DRIVEWAY LOCATED WITHIN THE PROJECT LIMITS. (SEE SHEET TMP-3).

GENERAL NOTES

CHANGES MAY BE REQUIRED WHEN PHYSICAL DIMENSIONS IN THE DETAIL DRAWINGS, STANDARD DETAILS AND ROADWAY DETAILS ARE NOT ATTAINABLE TO MEET FIELD CONDITIONS, OR RESULT IN DUPLICATE, OR UNDESIRE OVERLAPPING OF DEVICES. MODIFICATION MAY INCLUDE: MOVING, SUPPLEMENTING, COVERING, OF REMOVAL OF DEVICES, AS DIRECTED BY THE ENGINEER.

THE FOLLOWING GENERAL NOTES APPLY AT ALL TIMES FOR THE DURATION OF THE CONSTRUCTION PROJECT EXCEPT WHEN OTHERWISE NOTED IN THE PLAN OR AS DIRECTED BY THE ENGINEER.

PAVEMENT EDGE DROP OFF REQUIREMENTS

- A) BACKFILL AT A 6:1 SLOPE UP TO THE EDGE AND ELEVATION OF EXISTING PAVEMENT IN AREAS ADJACENT TO AN OPENED TRAVEL LANE THAT HAS A DROP-OFF AS FOLLOWS:

BACKFILL DROP-OFFS THAT EXCEED 2 INCHES ON ROADWAYS WITH POSTED SPEED LIMITS OF 45 MPH OR GREATER.

BACKFILL DROP-OFFS THAT EXCEED 3 INCHES ON ROADWAYS WITH POSTED SPEED LIMITS LESS THAN 45 MPH.

BACKFILL WITH SUITABLE COMPACTED MATERIAL, AS APPROVED BY THE ENGINEER, AT NO EXPENSE TO THE DEPARTMENT

- B) DO NOT EXCEED A DIFFERENCE OF 2 INCHES IN ELEVATION BETWEEN OPEN LANES OF TRAFFIC FOR NOMINAL LIFTS OF 1.5 INCHES. INSTALL ADVANCE WARNING "UNEVEN LANES" SIGNS (W8-11) 200 FT IN ADVANCE AND A MINIMUM OF ONCE EVERY HALF MILE THROUGHOUT THE UNEVEN AREA.

TRAFFIC PATTERN ALTERATIONS

- C) NOTIFY THE ENGINEER THIRTY (30) CALENDAR DAYS PRIOR TO ANY TRAFFIC PATTERN ALTERATION.

SIGNING

- D) PROVIDE SIGNING AND DEVICES REQUIRED TO CLOSE THE ROAD ACCORDING TO THE ROADWAY STANDARD DRAWINGS AND TRAFFIC CONTROL PLANS.

PROVIDE SIGNING REQUIRED FOR THE OFF-SITE DETOUR ROUTE AS SHOWN IN THE TRAFFIC CONTROL PLANS.

- E) COVER OR REMOVE ALL SIGNS AND DEVICES REQUIRED TO CLOSE THE ROAD WHEN ROAD CLOSURE IS NOT IN OPERATION.

COVER OR REMOVE ALL SIGNS REQUIRED FOR THE OFF-SITE DETOUR WHEN THE DETOUR IS NOT IN OPERATION.

- F) ENSURE ALL NECESSARY SIGNING IS IN PLACE PRIOR TO ALTERING ANY TRAFFIC PATTERN.

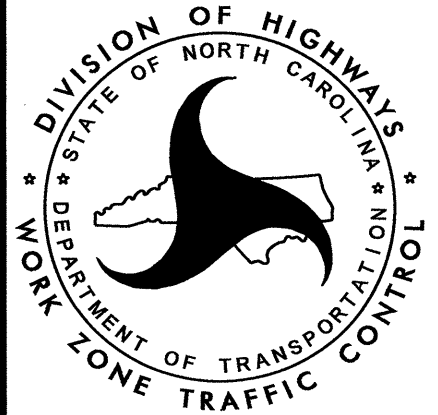
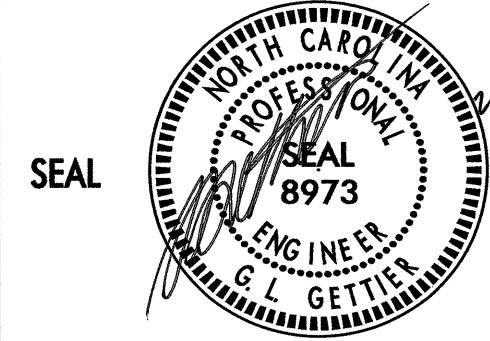
TRAFFIC CONTROL DEVICES

- G) PLACE TYPE III BARRICADES WITH "ROAD CLOSED" SIGN R-11-2 ATTACHED OF SUFFICIENT LENGTH TO CLOSE ENTIRE ROADWAY.

PAVEMENT MARKINGS AND MARKERS

- H) TIE PROPOSED PAVEMENT MARKING LINES TO EXISTING PAVEMENT MARKING LINES.

24-FEB-2012 11:06
 \\dot\dfs\co\01\proj\TIP\Projects-B\B4752\Traffic\TrafficControl\TCP\B4752_TC_TMP_01B.dgn
 sngreen AT 1E244733

APPROVED: _____	DATE: _____		TRANSPORTATION OPERATIONS & PROJECT NOTES
	FEB 12		

SIGN NUMBER: SP12002 BACKG COLOR: Fluorescent Orange
 TYPE: STATIONARY COPY COLOR: Black
 QUANTITY: SEE PLANS

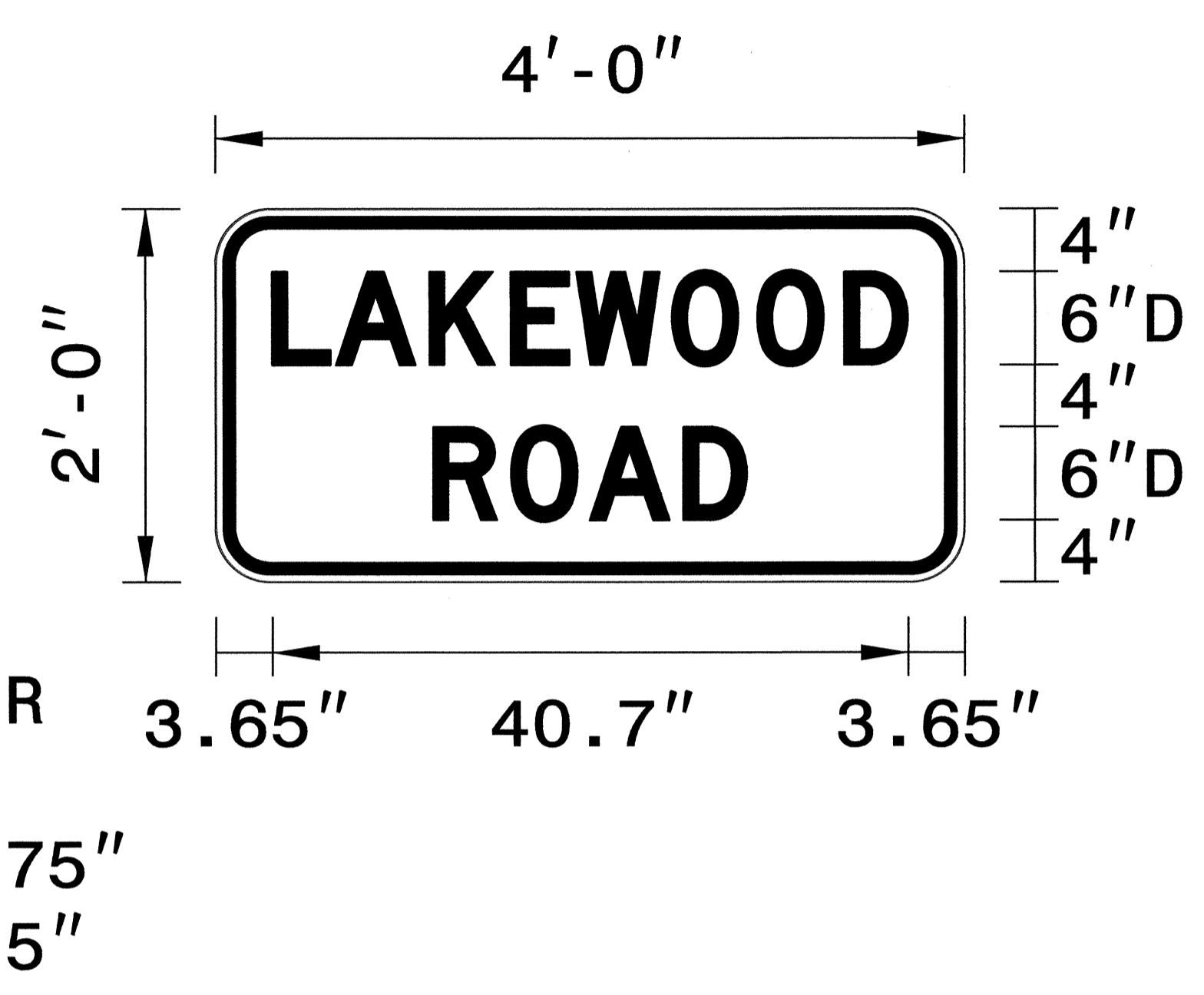
SYMBOL	X	Y	WID	HT

SIGN WIDTH: 4'-0"
 HEIGHT: 2'-0"
 TOTAL AREA: 8.0 Sq.Ft.

BORDER TYPE: INSET
 RECESS: 0.5"
 WIDTH: 0.75"
 RADII: 3"

NO. Z BARS: MAT'L: 0.080" (2.0 mm) ALUMINUM
 LENGTH:

DESIGN BY: W.Johnson CHECKED BY:
 PROJECT ID: B-4752 DIV: WZTC DATE: Jan 05, 2012



USE NOTES: 1,2

- Legend and border shall be direct applied black non-reflective sheeting.
- Background shall be Grade B fluorescent orange retroreflective sheeting.

Spacing Factor is 1 unless specified otherwise

LETTER POSITIONS

Letter spacings are to start of next letter

Letter Spacings																					Series/Size	
																					Text Length	
		L	A	K	E	W	O	O	D													D 2000
		3.6	4.1	6	5.2	4.2	6.1	5.5	5.6	4.1	3.6											40.7
		R	O	A	D																	D 2000
		14	5	5	6	4.1	14															20.1

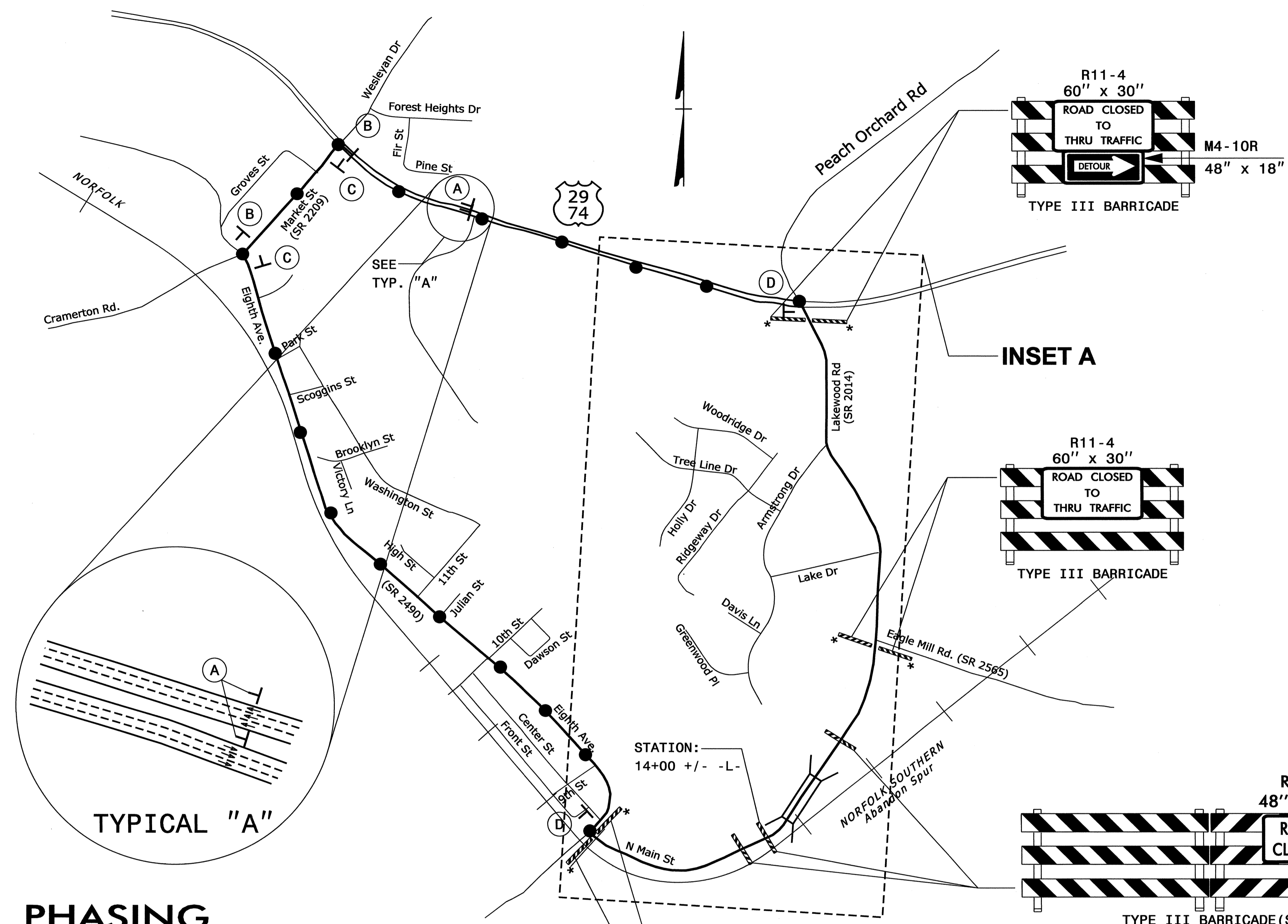
FILENAME: Lakewood Rd NORTH CAROLINA D.O.T. SIGN DETAIL

24-FEB-2012 11:09 AM
 \\dot\dfsroot\01\IPProjects\B\B4752\Traffic\TrafficControl\TCP\B4752_TC_TMP_02A.dgn
 sngreen AT TE244733

"The special sign designs shown on this sheet were provided through a sealed document from Signing and Delineation. The document was submitted to WZTC on 01-12-2012 and sealed by a Professional Engineer, Ronald W. King, license # 022959".

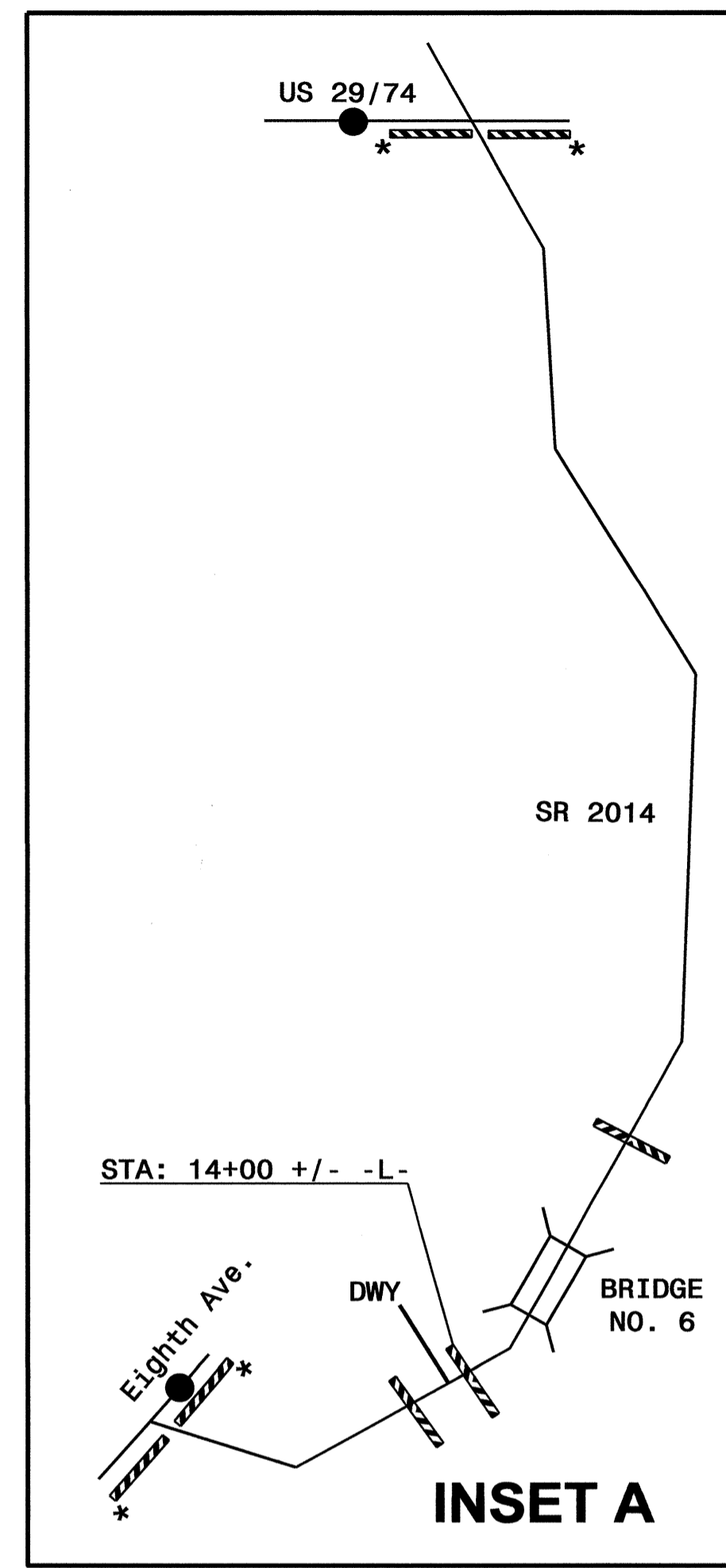
APPROVED: _____ DATE: _____

**DETOUR SIGN
DETAIL**

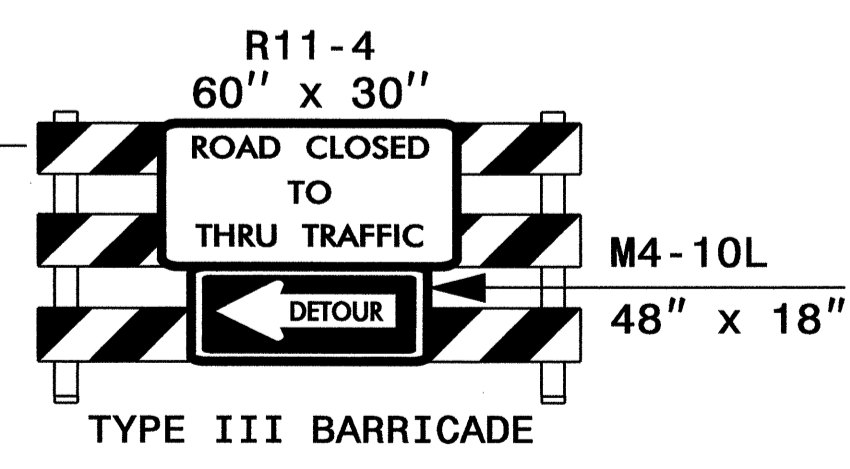
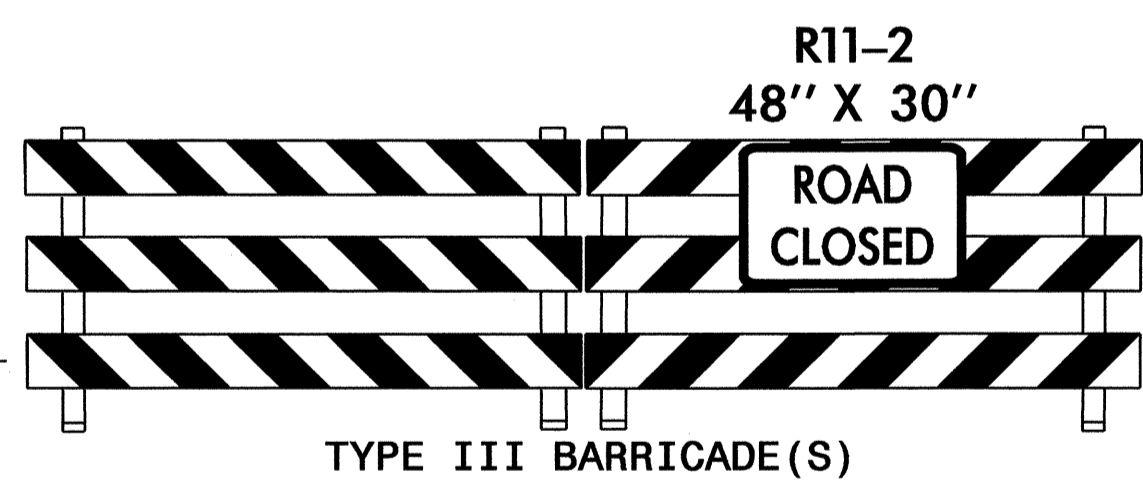
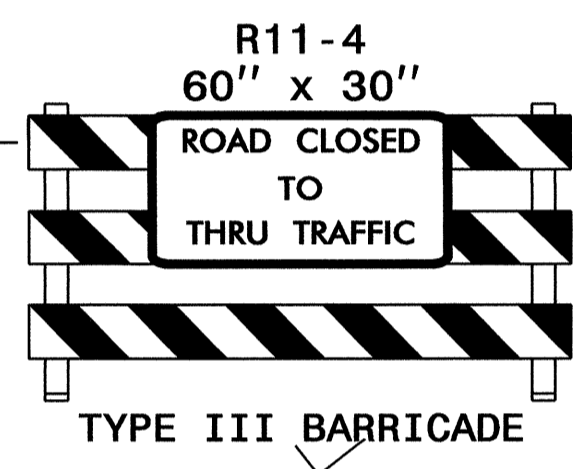
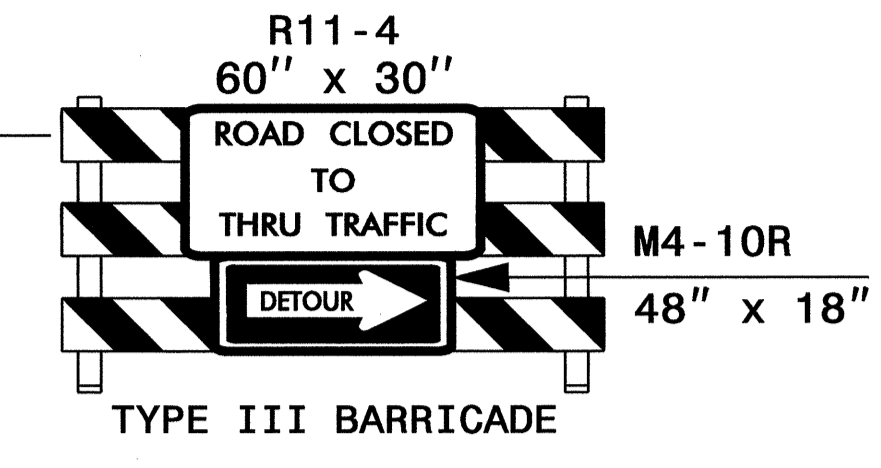


PHASING

- STEP 1:** - INSTALL OFF-SITE DETOUR ROUTE SIGNS AND ASSEMBLIES FOR THE CLOSING OF SR 2014 (LAKEWOOD RD., -L-).
- USING ROADWAY STANDARD DRAWING NO. 1101.03, SHEET 1 OF 9, CLOSE SR 2014 (LAKEWOOD RD., -L-) TO THRU TRAFFIC.
- NOTE:** INSTALL ADDITIONAL TYPE III BARRICADES AT STATION 14+00 +/- -L- AND UTILIZE DRUMS TO MAINTAIN ACCESS TO DRIVEWAY DURING CONSTRUCTION.
- STEP 2:** - REMOVE THE EXISTING STRUCTURE AND CONSTRUCT THE PROPOSED STRUCTURE AND ROADWAY UP TO AND INCLUDING THE FINAL LAYER OF SURFACE COURSE AND PLACE FINAL PAVEMENT MARKINGS AND MARKERS ON SR 2014 (LAKEWOOD RD., -L-) FROM STATION 12+50 +/- -L- TO STATION 26+50 +/- -L-. (SEE CONSTRUCTION PLANS AND PAVEMENT MARKING PLAN).
- STEP 3:** - REMOVE ALL TRAFFIC CONTROL DEVICES, SIGNING AND DETOUR ROUTE SIGNING.
- OPEN TO FINAL TRAFFIC PATTERN.



- DETOUR M4-8 24" X 12"
LAKEWOOD ROAD **
M5-1 21" X 15"
SIGN (A)
- DETOUR M4-8 24" X 12"
LAKEWOOD ROAD **
M6-1 L 21" X 15"
SIGN (B)
- DETOUR M4-8 24" X 12"
LAKEWOOD ROAD **
M6-1 21" X 15"
SIGN (C)
- END M4-8 A 24" X 18"
DETOUR SIGN (D)



NOTES:

- ALL DETOUR SIGN LOCATIONS ARE APPROXIMATE.
- ALL DETOUR SIGNS ARE BLACK ON ORANGE UNLESS OTHERWISE NOTED.
- * SEE ROADWAY STANDARD DRAWING NO. 1101.03, SHEET 1 OF 9, FOR ADDITIONAL WORK ZONE SIGNS.
- ** SEE TMP-2A FOR SIGN DESIGN.

24-FEB-2012 11:41 \\vdof\dfs\sr\projects-B\B4752\TrafficControl\CP\B4752.TC.TMP_03.dgn

APPROVED: _____ DATE: _____			<h3>TEMPORARY TRAFFIC CONTROL PHASING AND DETAIL</h3>
SEAL			