


STATE OF NORTH CAROLINA
DEPARTMENT OF TRANSPORTATION

PAVEMENT MARKING PLAN
CUMBERLAND COUNTY

LOCATION: I-95 BUS LOOP & US 301- REPLACE BRIDGE NO. 85
OVER CAPE FEAR RIVER, SR 1737 & SR1739 IN FAYETTEVILLE

TIP NO.	SHEET NO.
B-4091	PMP-1
APPROVED: <i>Ayman Alqudwah</i>	
DATE: 5/2/12	
SEAL	
	

ROADWAY STANDARD DRAWING

THE FOLLOWING ROADWAY STANDARDS AS APPEAR IN "ROADWAY STANDARD DRAWINGS" - PROJECT SERVICES UNIT - N.C. DEPARTMENT OF TRANSPORTATION - RALEIGH, N.C., DATED JANUARY 2012 ARE APPLICABLE TO THIS PROJECT AND BY REFERENCE HEREBY ARE CONSIDERED A PART OF THESE PLANS:

STD. NO.	TITLE
1205.01	PAVEMENT MARKINGS - LINE TYPES AND OFFSETS
1205.02	PAVEMENT MARKINGS - 2 LANE AND MULTILANE ROADWAYS
1205.05	PAVEMENT MARKINGS - TURN LANES
1205.06	PAVEMENT MARKINGS - THRU LANE DROPS
1205.08	PAVEMENT MARKINGS - SYMBOL AND WORD MESSAGES
1205.09	PAVEMENT MARKINGS - PAINTED ISLANDS
1205.12	PAVEMENT MARKINGS - BRIDGES
1205.13	PAVEMENT MARKINGS LANE REDUCTION
1250.01	PAVEMENT MARKER SPACING
1253.01	SNOWPLOWABLE RAISED PAVEMENT MARKERS
1261.01	GUARDRAIL AND BARRIER DELINEATOR SPACING
1261.02	GUARDRAIL AND BARRIER DELINEATOR TYPES
1262.01	GUARDRAIL END DELINEATION

B-4091 FINAL PAVEMENT MARKING SCHEDULE

SYMBOL	DESCRIPTION
FINAL PAVEMENT MARKINGS	
PAINT(4")	
PA	WHITE EDGELINE (2X)
PI	YELLOW DOUBLE CENTER (2X)
COLD APPLIED PLASTIC (4") Type III - Permanent Std	
CA	WHITE EDGELINE
CB	YELLOW EDGELINE
CC	10 FT. WHITE SKIP
THERMOPLASTIC(4", 120 MILS)	
TC	10 FT. WHITE SKIP
T8	2 FT.- 6 FT./SP WHITE SKIP (4", 120 MIL)
THERMOPLASTIC(4", 90 MILS)	
TA	WHITE EDGELINE
TB	YELLOW EDGELINE
TD	3 FT.-9 FT./SP WHITE MINISKIP (4", 120 MIL)
TE	WHITE SOLID LANE LINE (4", 120 MIL)
TN	WHITE GORELINE (8", 90 MIL)
TR	WHITE SOLID LANE LINE (8", 120 MIL)
T13	3 FT. 9 FT./SP WHITE MINISKIP (8", 120 MIL)
THERMOPLASTIC(90 MILS)	
UB	RIGHT TURN ARROW
THERMOPLASTIC(120 MILS)	
UJ	ALPHANUMERIC CHAR.
THERMOPLASTIC(90 MILS)	
UP	MERGE ARROW (90 MIL)
MARKERS	
PERMANENT RAISED PAVEMENT MARKERS	
PERMANENT RAISED SNOWPLOWABLE PAVEMENT MARKERS	
MB	CRYSTAL & RED

GENERAL NOTES

THE FOLLOWING GENERAL NOTES APPLY AT ALL TIMES FOR THE DURATION OF THE CONSTRUCTION PROJECT, EXCEPT WHEN OTHERWISE NOTED IN THE PLAN, OR DIRECTED BY THE ENGINEER.

- A) INSTALL PAVEMENT MARKINGS AND PAVEMENT MARKERS ON THE FINAL SURFACE AS FOLLOWS:
- | ROAD NAME | MARKING | MARKER |
|---------------|----------------------|---------------------|
| I-95 BUS LOOP | THERMOPLASTIC | RAISED SNOWPLOWABLE |
| BRIDGE DECK | COLD APPLIED PLASTIC | RAISED MARKERS |
| Y1 AND Y2 | PAINT | NONE |
- B) PLACE TWO APPLICATIONS OF PAINT PAVEMENT MARKINGS ON THE FINAL WEARING SURFACE. PLACE THE SECOND APPLICATION OF PAINT UPON SUFFICIENT DRYING TIME OF THE FIRST.
- C) TIE PROPOSED PAVEMENT MARKING LINES TO EXISTING PAVEMENT MARKING LINES.
- D) REMOVE/REPLACE ANY CONFLICTING/DAMAGED PAVEMENT MARKINGS AND MARKERS.
- E) PASSING ZONES WILL BE DETERMINED IN THE FIELD AND MUST BE APPROVED BY THE ENGINEER.
- F) REMOVE ALL RESIDUE AND SURFACE LAITANCE BY ACCEPTABLE METHODS ON THE BRIDGE DECK PRIOR TO PLACING COLD APPLIED PLASTIC PAVEMENT MARKING.

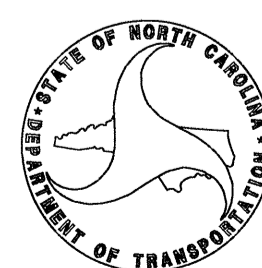
INDEX

SHEET NO.	DESCRIPTION
PMP-1	PAVEMENT MARKING PLAN TITLE SHEET
PMP-1A	PAVEMENT MARKING PLAN SCHEDULE SHEET
PMP-2-3	CROSSWALK AND STOP BAR PAVEMENT MARKING DETAIL
PMP-2-3	PAVEMENT MARKING DETAIL

PLAN PREPARED BY: N.C.D.O.T. SIGNING AND DELINEATION UNIT


AYMEN I. ALQUDWAH P.E. SIGNING & DELINEATION REGIONAL ENGINEER

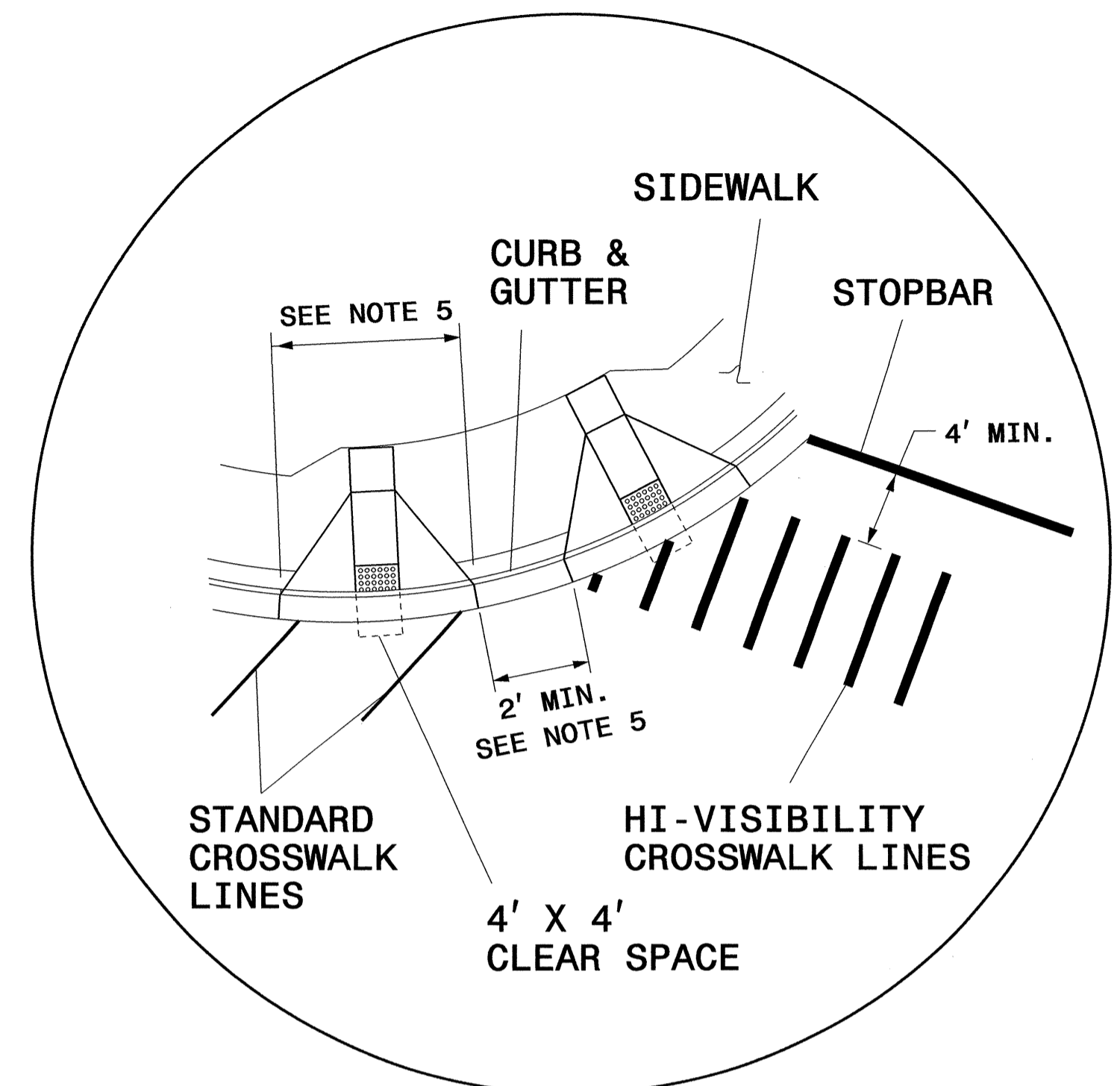
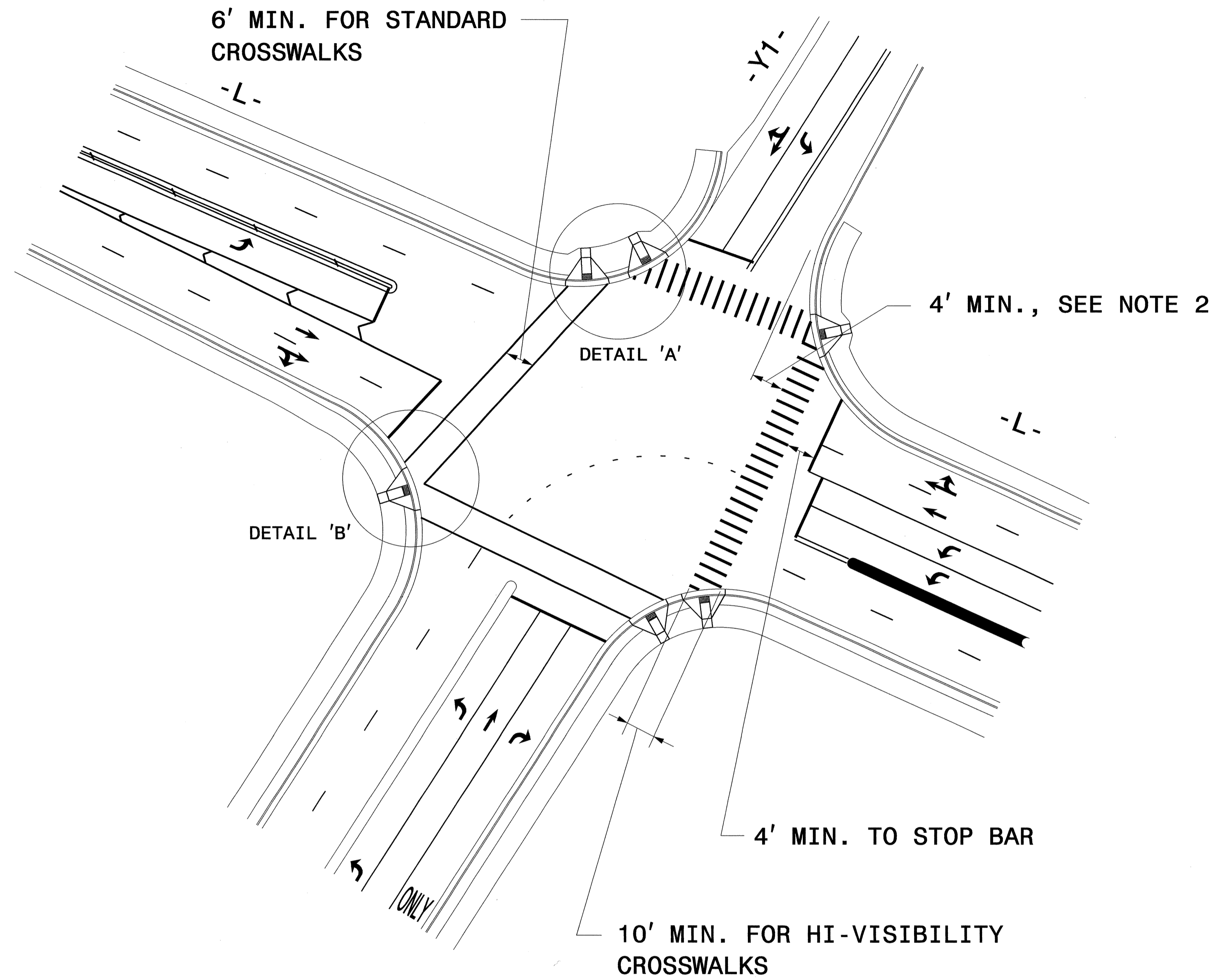
BARRY NOWLIN SIGNING & DELINEATION PROJECT DESIGN TECHNICIAN



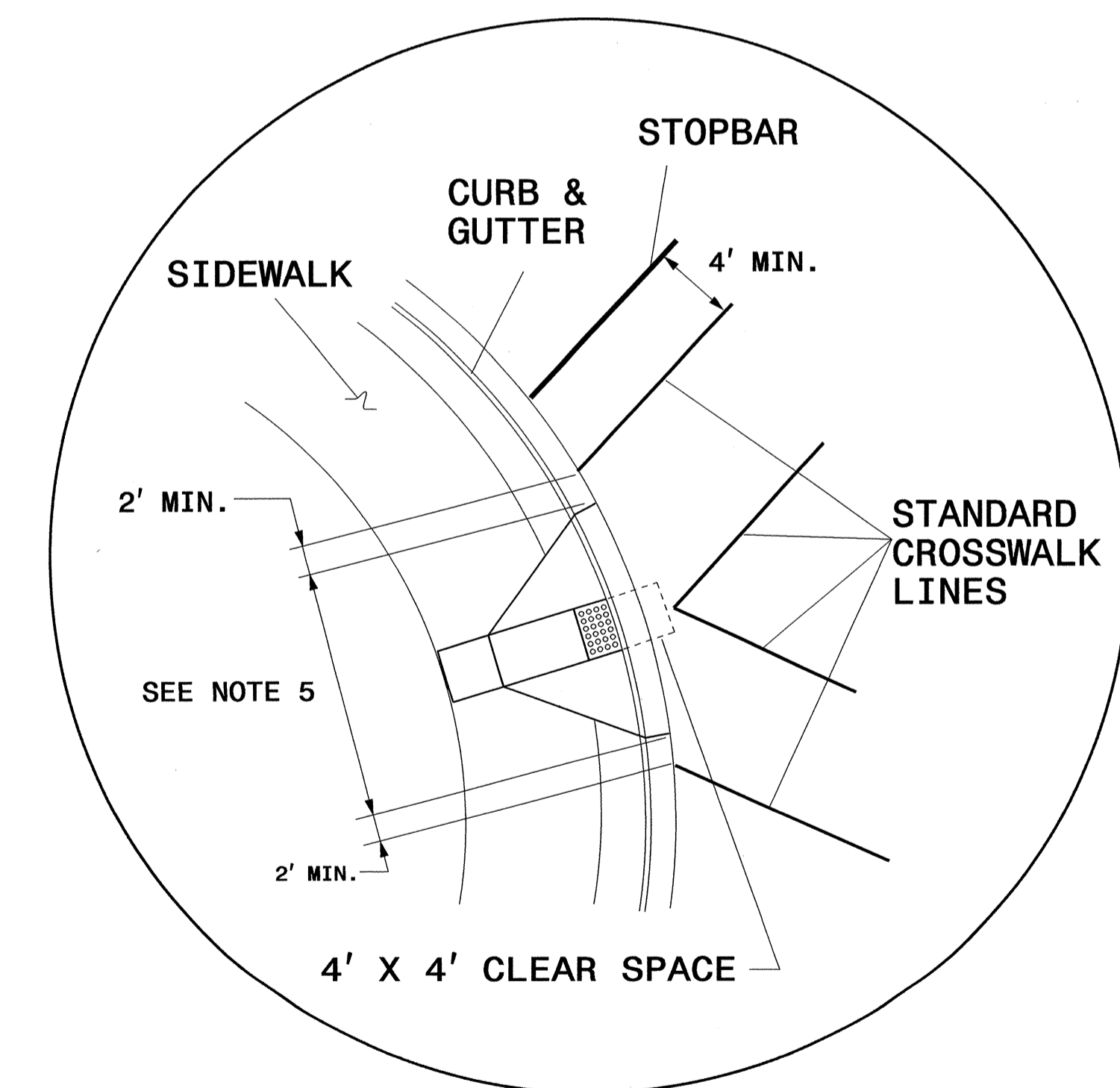
T.I.P.: B-4091

CONTRACT: C202879

TIP NO. B-4091	SHEET NO. PMP-1A
APPROVED: <i>RW</i>	
DATE: 6/22/12	
SEAL	
	
REVISIONS	



DETAIL 'A'- DUAL CURB RAMPS



DETAIL 'B'- SINGLE DIAGONAL CURB RAMP

GUIDANCE DETAIL FOR STANDARD AND HI-VISIBILITY CROSSWALKS AT SIGNALIZED OR STOP SIGN CONTROLLED INTERSECTIONS

NOTES:

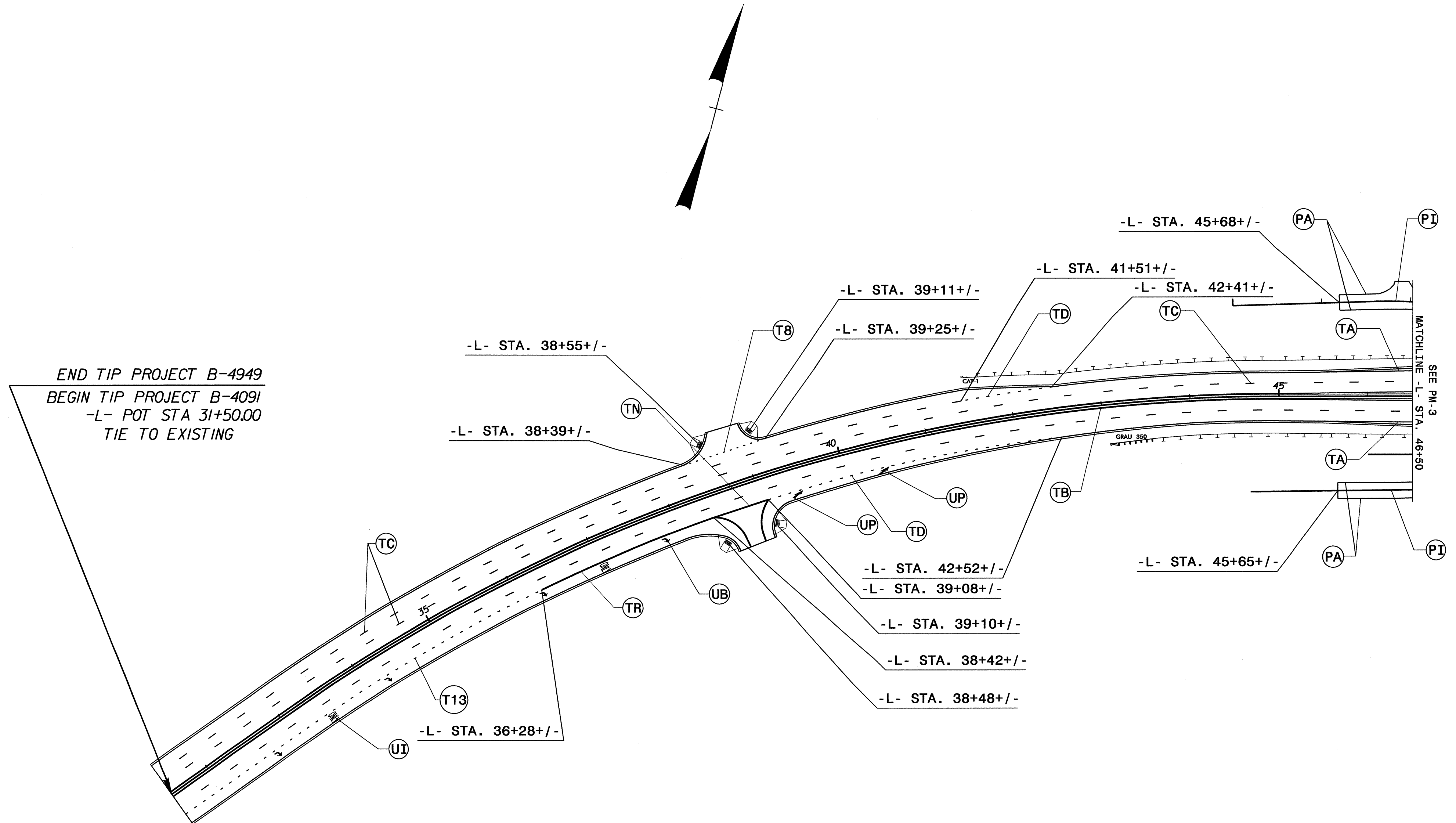
1. USE DETAILS ABOVE AND THE FOLLOWING NOTES FOR GUIDANCE IN PLACING CROSSWALKS AND STOP BARS NOT STATIONED ON THE DETAIL SHEETS OR WHEN FIELD ADJUSTMENTS REQUIRED MOVING STATIONED MARKINGS AS DIRECTED BY THE ENGINEER. REFER TO NCDOT ROADWAY STANDARD DRAWINGS, MUTCD AND ADA STANDARDS FOR ADDITIONAL GUIDANCE.
2. SET BACK DISTANCE FROM INSIDE CROSSWALK MARKING TO NEAREST EDGE OF TRAVEL IS 4' MIN.
3. BEYOND THE BOTTOM GRADE BRAKE, A CLEAR SPACE OF 4' X 4' MINIMUM SHALL BE PROVIDED WITHIN THE WIDTH OF THE CROSSWALK.
4. SINGLE DIAGONAL CURB RAMPS WITH FLARED SIDES SHALL HAVE A SEGMENT OF CURB 2 FEET LONG MINIMUM LOCATED ON EACH SIDE OF THE CURB RAMP AND WITHIN THE MARKED CROSSING, SEE DETAIL 'B'.
5. CURB RAMPS SHALL BE CONSTRUCTED IN ACCORDANCE TO THE LATEST NCDOT ROADWAY STANDARD DRAWINGS.

CROSSWALK AND STOP BAR PAVEMENT MARKING DETAIL

22-JUN-2012 09:22 P:\TIP\Projects\B-4091\Traffic\Signing\CADD\PMP\Curb Ramp and Crosswalk Guidance 2-10-12.dgn broshid AT TE247799

8/10/12

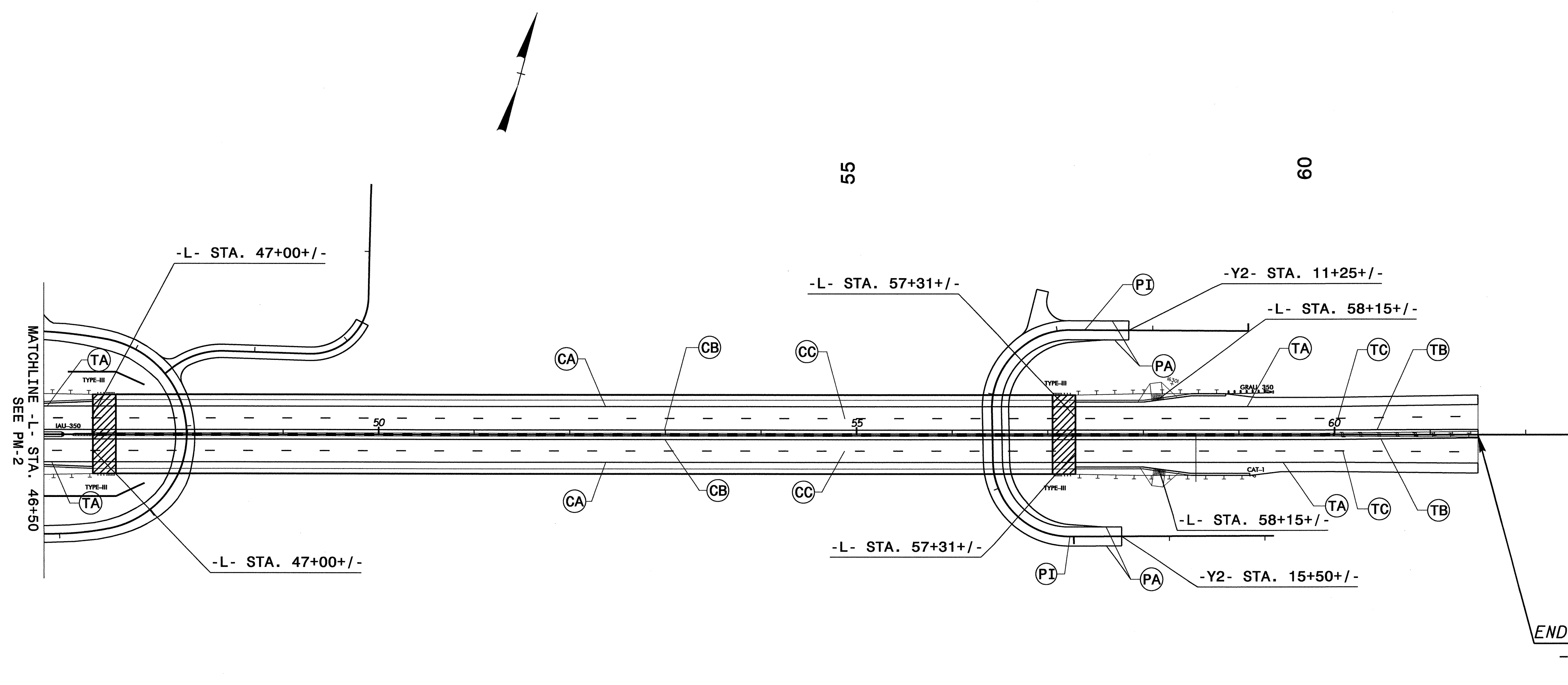
TIP NO. B-4091	SHEET NO. PMP-2
APPROVED: <i>[Signature]</i>	
DATE: 5/2/12	
SEAL	



END TIP PROJECT B-4949
 BEGIN TIP PROJECT B-4091
 -L- POT STA 31+50.00
 TIE TO EXISTING

PAVEMENT MARKING DETAIL

TIP NO. B-4091	SHEET NO. PMP-3
APPROVED: <i>[Signature]</i>	
DATE: 5/2/12	
SEAL	



END TIP PROJECT B-4091
 -L- POT STA 61+50.00
 TIE TO EXSITING

PAVEMENT MARKING DETAIL

02 MAY 2012 09:45
 C:\MATT\PROJECTS\CADD\B-4091\PM-3.dgn
 bnewlin