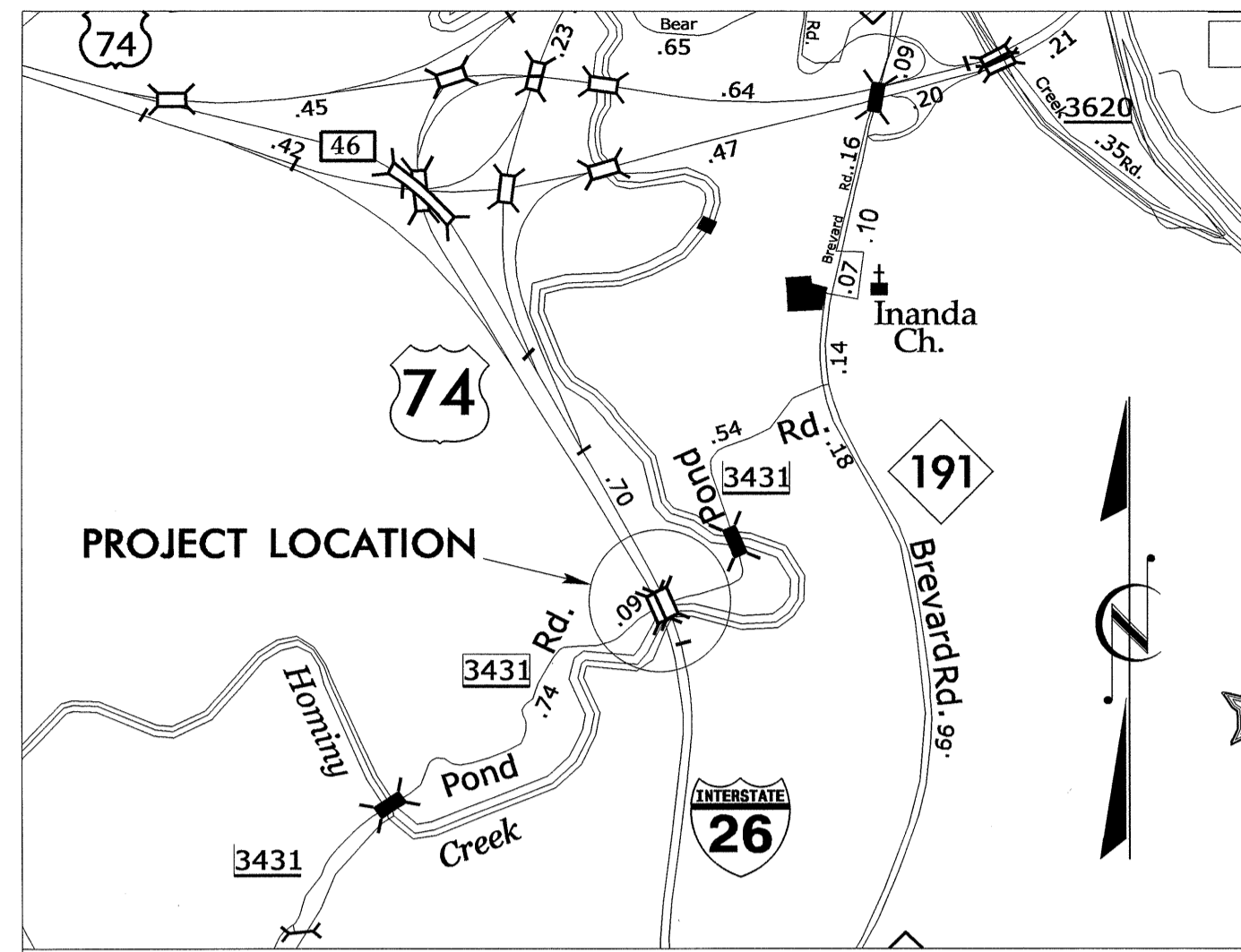
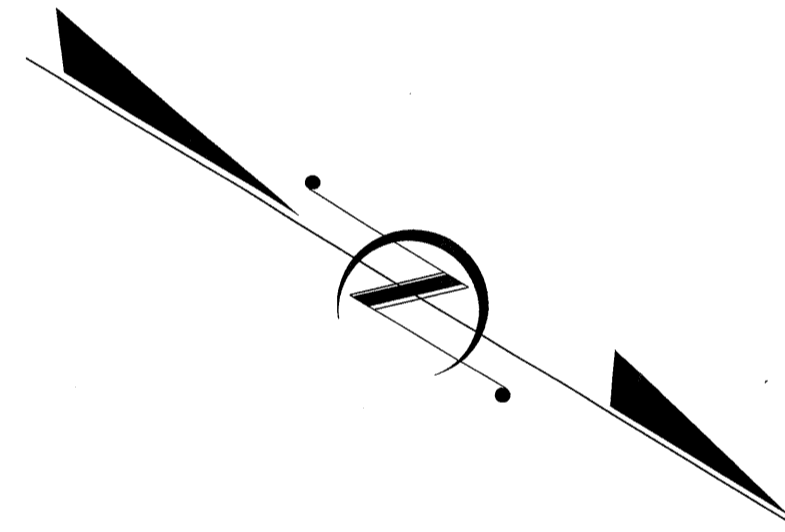


09/08/99

TIP PROJECT: B-5178



VICINITY MAP

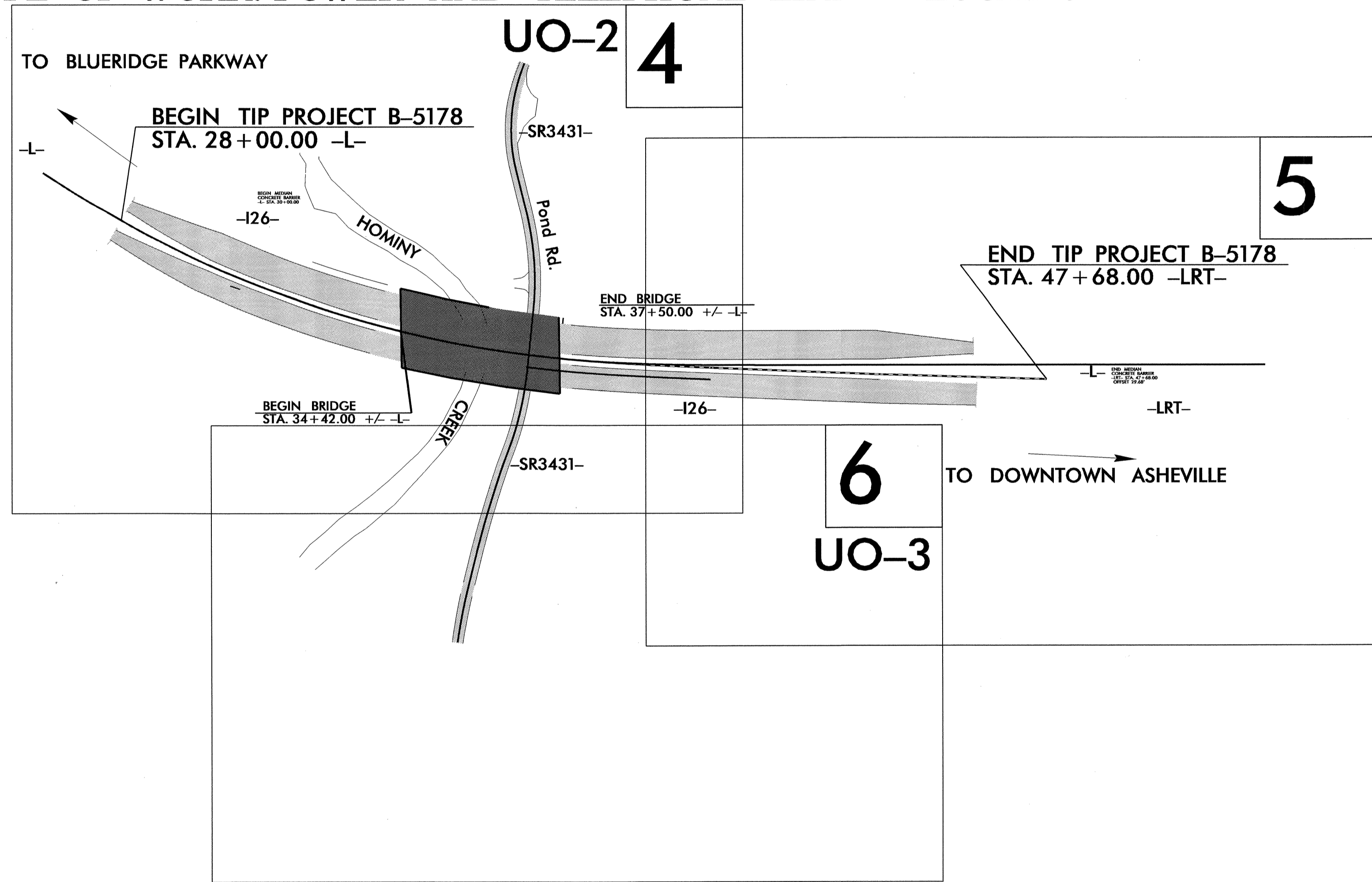


STATE OF NORTH CAROLINA
DIVISION OF HIGHWAYS

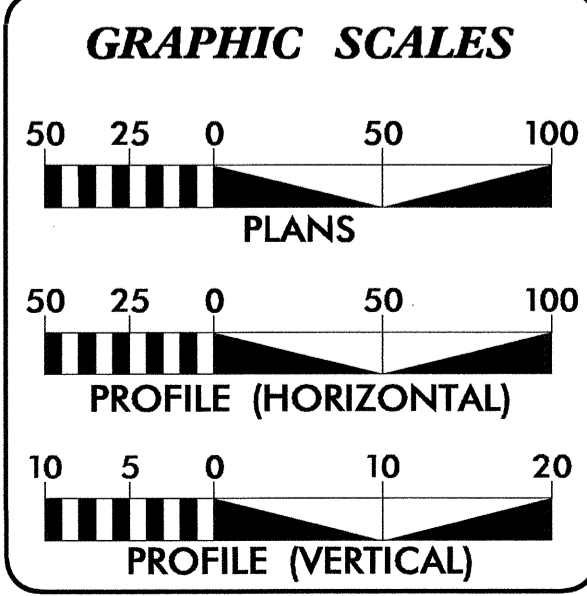
**UTILITIES BY OTHERS PLANS
BUNCOMBE COUNTY**

**LOCATION: REPLACEMENT OF BRIDGE NO. 235 AND
238 ON I-26 OVER SR 3431 (POND ROAD)**

TYPE OF WORK: POWER AND TELEPHONE LINE RELOCATION



T.I.P. NO.	SHEET NO.
B-5178	UO-1

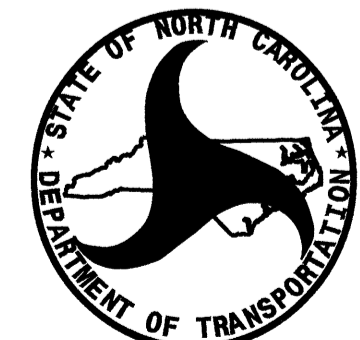


INDEX OF SHEETS

SHEET NO.	DESCRIPTION
UO-1	TITLE SHEET
UO-2	UTILITIES BY OTHERS PLAN SHEET

UTILITY OWNERS ON PROJECT

(1) PROGRESS ENERGY	POWER
(2) AT&T	TELEPHONE
(3) WATER	CITY OF ASHEVILLE
(4) METROPOLITAN SEWERAGE DISTRICT	SEWER



PREPARED IN THE OFFICE OF:
**DIVISION OF HIGHWAYS
UTILITIES ENGINEERING
SECTION**

1591 MAIL SERVICES CENTER
RALEIGH NC 27699-1591
PHONE (919) 707-6690
FAX (919) 250-4151

Roger Worthington, P.E. UTILITIES SECTION ENGINEER
Carl Barclay, P.E. UTILITIES SQUAD LEADER PROJECT ENGINEER
Ali Kouchehi, P.E. UTILITIES PROJECT DESIGNER

08-MAY-2012 16:05
P:\W\11-605-RC\11-605-RC\11-605-RC\Proj\B-5178-Rdy-tsh-UO1.dgn
\$\$\$\$\$USER\$NAME\$\$\$\$\$

UTILITIES BY OTHERS

NOTE:
ALL PROPOSED UTILITY WORK SHOWN ON THIS SHEET WILL BE DONE BY OTHERS

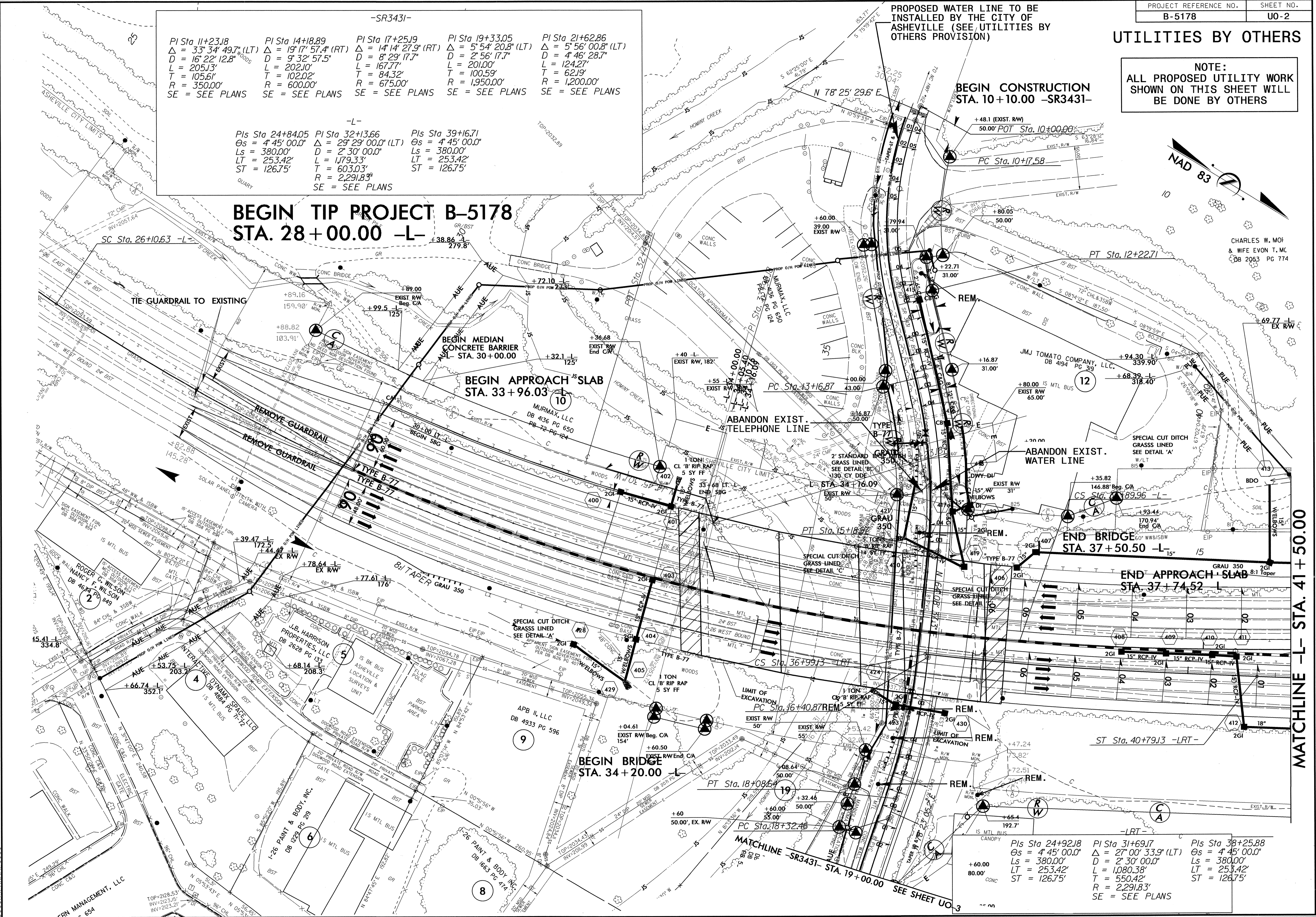
-SR3431-

PI Sta 11+23.18 Δ = 33°34'49.7" (LT) D = 16'22'12.8" L = 205.13' T = 105.61' R = 350.00' SE = SEE PLANS	PI Sta 14+18.89 Δ = 19°17'57.4" (RT) D = 9'32'57.5" L = 202.10' T = 102.02' R = 600.00' SE = SEE PLANS	PI Sta 17+25.19 Δ = 14°14'27.9" (RT) D = 8'29'17.7" L = 167.77' T = 84.32' R = 675.00' SE = SEE PLANS	PI Sta 19+33.05 Δ = 5°54'20.8" (LT) D = 5'56'17.7" L = 201.00' T = 100.59' R = 1,950.00' SE = SEE PLANS	PI Sta 21+62.86 Δ = 5°56'00.8" (LT) D = 4'46'28.7" L = 124.27' T = 62.19' R = 1,200.00' SE = SEE PLANS
---	--	---	---	--

-L-

PIs Sta 24+84.05 Os = 4°45'00.0" Ls = 380.00' LT = 253.42' ST = 126.75'	PI Sta 32+13.66 Δ = 29°29'00.0" (LT) D = 2'30'00.0" L = 1,179.33' T = 603.03' R = 2,291.83' SE = SEE PLANS	PIs Sta 39+16.71 Os = 4°45'00.0" Ls = 380.00' LT = 253.42' ST = 126.75'
---	--	---

**BEGIN TIP PROJECT B-5178
STA. 28+00.00 -L-**



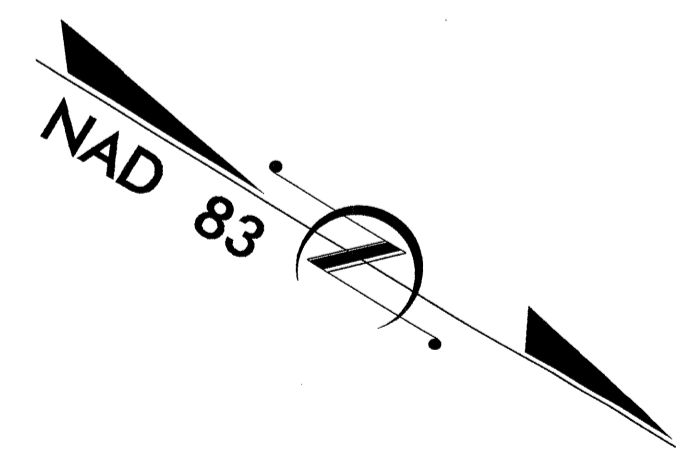
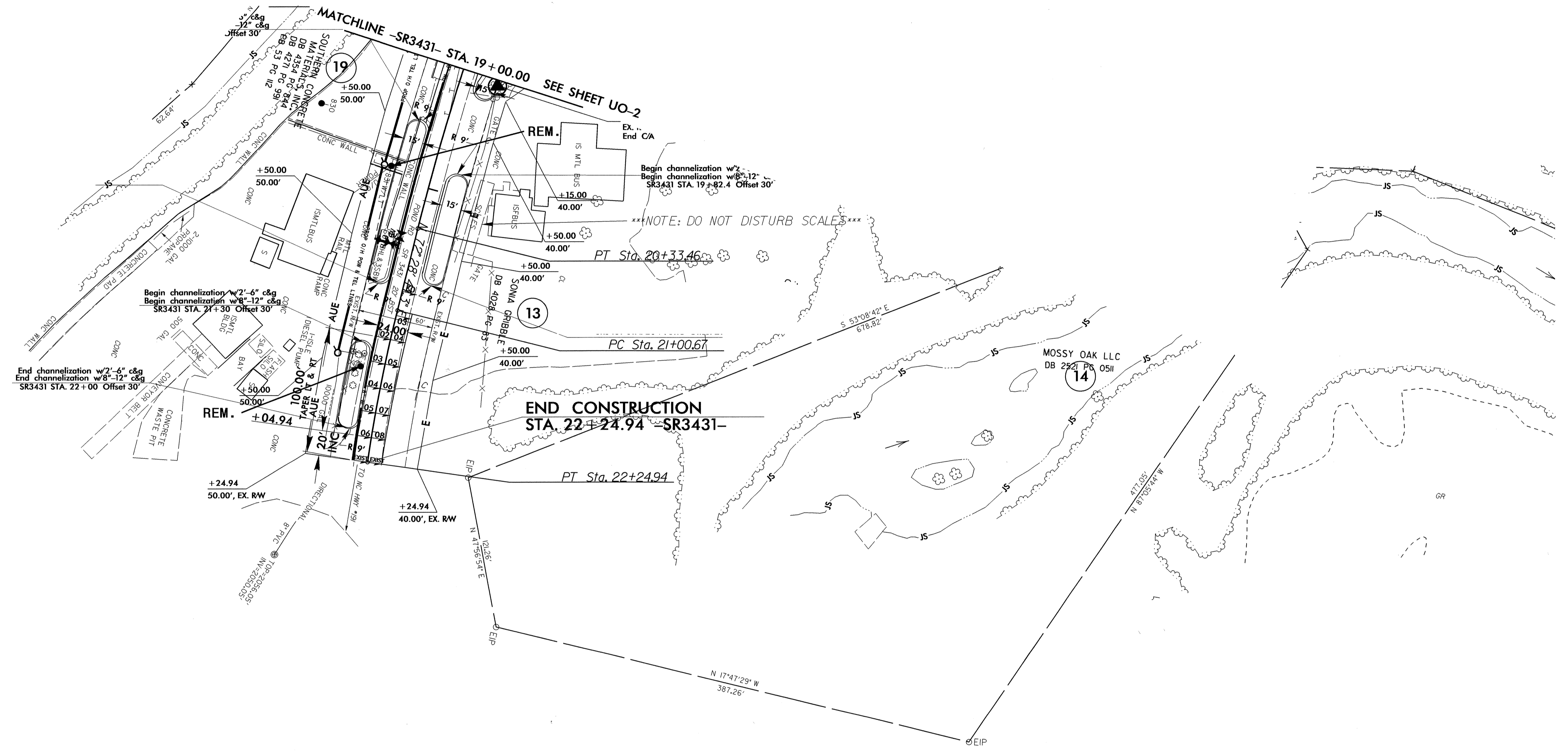
PIs Sta 24+92.18 Os = 4°45'00.0" Ls = 380.00' LT = 253.42' ST = 126.75'	PI Sta 31+69.17 Δ = 27°00'33.9" (LT) D = 2'30'00.0" L = 1,080.38' T = 550.42' R = 2,291.83' SE = SEE PLANS	PIs Sta 38+25.88 Os = 4°45'00.0" Ls = 380.00' LT = 253.42' ST = 126.75'
---	--	---

MATCHLINE -L- STA. 41+50.00

09-MAY-2012 08:30 R:\Users\paul.van... \B-5178_Rdw-psht4-U02.dgn

UTILITIES BY OTHERS

NOTE:
ALL PROPOSED UTILITY WORK
SHOWN ON THIS SHEET WILL
BE DONE BY OTHERS



5/14/99

08-MAY-2012 15:56
 \\utah\itess\road\14\pco\B-5178_Rdy.pst6_UO-3.dgn.dgn
 \$\$\$\$SUSANRENCHIE\$\$\$\$