

15

31

08-MAY-2012 10:49
R:\Traffic\Signing\CADD\PM\ Pavement Marking Seed 4-12-12.dgn
At LE244736
dhbeard


T.I.P.: B-5178

CONTRACT: C202880

STATE OF NORTH CAROLINA
DEPARTMENT OF TRANSPORTATION

PAVEMENT MARKING PLAN
BUNCOMBE COUNTY

LOCATION: REPLACEMENT OF BRIDGES No. 235 AND 238
ON I-26 OVER SR 3431 (POND RD.) AND
HOMINY CREEK

TIP NO. B-5178	SHEET NO. PMP-1
APPROVED: <i>[Signature]</i>	
DATE: 5/10/12	
SEAL	
	

ROADWAY STANDARD DRAWING

THE FOLLOWING ROADWAY STANDARDS AS APPEAR IN "ROADWAY STANDARD DRAWINGS" - PROJECT SERVICES UNIT - N.C. DEPARTMENT OF TRANSPORTATION - RALEIGH, N.C., DATED JANUARY 2012 ARE APPLICABLE TO THIS PROJECT AND BY REFERENCE HEREBY ARE CONSIDERED A PART OF THESE PLANS:

STD. NO.	TITLE
1205.01	PAVEMENT MARKINGS - LINE TYPES AND OFFSETS
1205.02	PAVEMENT MARKINGS - TWO-LANE AND MULTILANE ROADWAYS
1205.04	PAVEMENT MARKINGS - INTERSECTIONS
1205.09	PAVEMENT MARKINGS - PAINTED ISLANDS
1205.12	PAVEMENT MARKINGS - BRIDGES
1250.01	RAISED PAVEMENT MARKERS - INSTALLATION SPACING
1251.01	RAISED PAVEMENT MARKERS - PERMANENT AND TEMPORARY
1253.01	RAISED PAVEMENT MARKERS - SNOWPLOWABLE
1261.01	GUARDRAIL AND BARRIER DELINEATORS - INSTALLATION SPACING
1261.02	GUARDRAIL AND BARRIER DELINEATORS - TYPES AND MOUNTING
1262.01	GUARDRAIL END DELINEATION

GENERAL NOTES

THE FOLLOWING GENERAL NOTES APPLY AT ALL TIMES FOR THE DURATION OF THE CONSTRUCTION PROJECT, EXCEPT WHEN OTHERWISE NOTED IN THE PLAN, OR DIRECTED BY THE ENGINEER.

- A) INSTALL PAVEMENT MARKINGS AND PAVEMENT MARKERS ON THE FINAL SURFACE AS FOLLOWS:

ROAD NAME	MARKING	MARKER
-L- I-26 BRIDGE	POLYUREA & THERMOPLASTIC POLYUREA & COLD APPLIED PLASTIC	SNOW PLOWABLE PERMANENT RAISED
-SR3431- POND RD.	PAINT	NONE

- B) PLACE TWO APPLICATIONS OF PAINT PAVEMENT MARKINGS ON THE FINAL WEARING SURFACE. PLACE THE SECOND APPLICATION OF PAINT UPON SUFFICIENT DRYING TIME OF THE FIRST.
- C) TIE PROPOSED PAVEMENT MARKING LINES TO EXISTING PAVEMENT MARKING LINES.
- D) REMOVE/REPLACE ANY CONFLICTING/DAMAGED PAVEMENT MARKINGS AND MARKERS.
- E) PASSING ZONES WILL BE DETERMINED IN THE FIELD AND MUST BE APPROVED BY THE ENGINEER.
- F) REMOVE ALL RESIDUE AND SURFACE LAITANCE BY ACCEPTABLE METHODS ON CONCRETE BRIDGE DECKS PRIOR TO PLACING POLYUREA AND COLD APPLIED PLASTIC PAVEMENT MARKING MATERIAL.
- G) UNLESS OTHERWISE SPECIFIED, HEATED-IN-PLACE THERMOPLASTIC MAY BE USED IN LIEU OF EXTRUDED THERMOPLASTIC FOR STOP BARS, SYMBOLS, CHARACTERS AND DIAGONALS. IF HEATED-IN-PLACE IS USED, IT SHALL BE PAID FOR USING THE EXTRUDED THERMOPLASTIC PAY ITEM.
- H) TYPE III COLD APPLIED PLASTIC MAY BE USED IN LIEU OF TYPE II COLD APPLIED PLASTIC. IF TYPE III COLD APPLIED PLASTIC IS USED, IT SHALL BE PAID FOR USING THE TYPE II COLD APPLIED PLASTIC PAY ITEM.

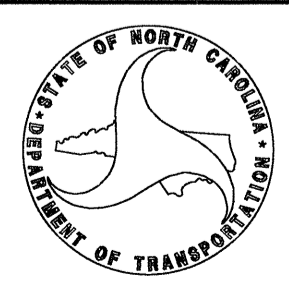
INDEX

SHEET NO.	DESCRIPTION
PMP-1	PAVEMENT MARKING PLAN TITLE SHEET
PMP-2	PAVEMENT MARKING SCHEDULE SHEET
PMP-3-4	PAVEMENT MARKING PLANS

PLAN PREPARED BY: N.C.D.O.T. SIGNING AND DELINEATION UNIT

KELVIN L. JORDAN SIGNING & DELINEATION REGIONAL ENGINEER

DERRICK H. BEARD SIGNING & DELINEATION PROJECT DESIGN ENGINEER



TIP NO.	SHEET NO.
B-5178	PMP-2
APPROVED: <i>[Signature]</i>	
DATE: 5/10/12	
SEAL	

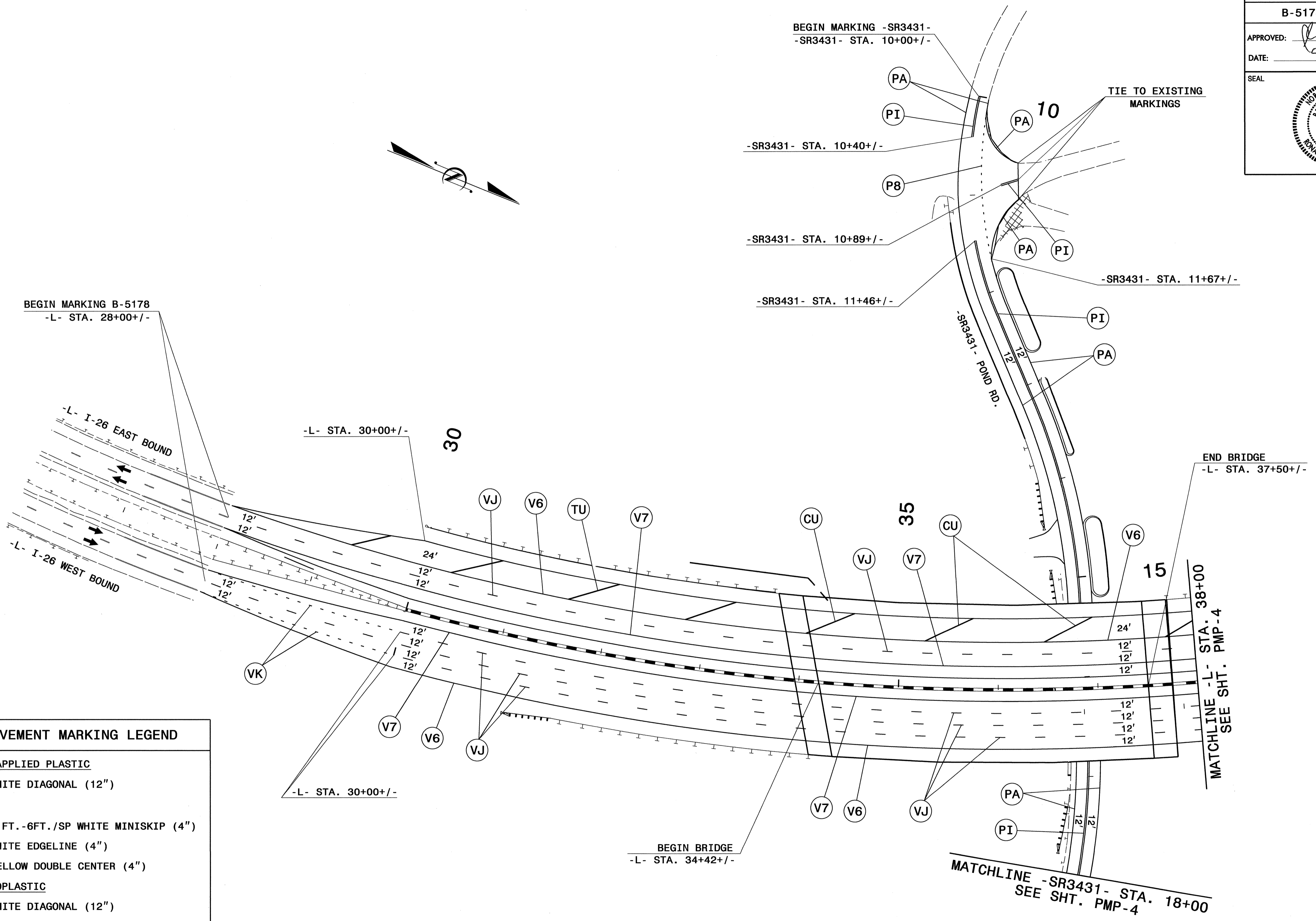
B-5178 PAVEMENT MARKING SCHEDULE

SYMBOL	DESCRIPTION
FINAL PAVEMENT MARKINGS	
<u>COLD APPLIED PLASTIC (12") Type2 - Permanent High Performance</u>	
CU	WHITE DIAGONAL
<u>THERMOPLASTIC(12", 90 MILS)</u>	
TU	WHITE DIAGONAL
<u>PAINT(4")</u>	
P9	2 FT. - 6 FT./SP YELLOW MINISKIP
PA	WHITE EDGELINE
PI	YELLOW DOUBLE CENTER
<u>POLYUREA (6") Highly Reflective Elements</u>	
V6	WHITE EDGELINE
V7	YELLOW EDGELINE
VJ	10 FT. WHITE SKIP
VK	3 FT. - 9 FT./SP WHITE MINISKIP
MARKERS	
<u>PERMANENT RAISED PAVEMENT MARKERS</u>	
MB	CRYSTAL & RED
<u>SNOWPLOWABLE RAISED PAVEMENT MARKERS</u>	
MF	CRYSTAL & RED

PAVEMENT MARKING SCHEDULE

TIP NO.	SHEET NO.
B-5178	PMP-3
APPROVED: <i>[Signature]</i>	
DATE: 5/10/11	
SEAL	

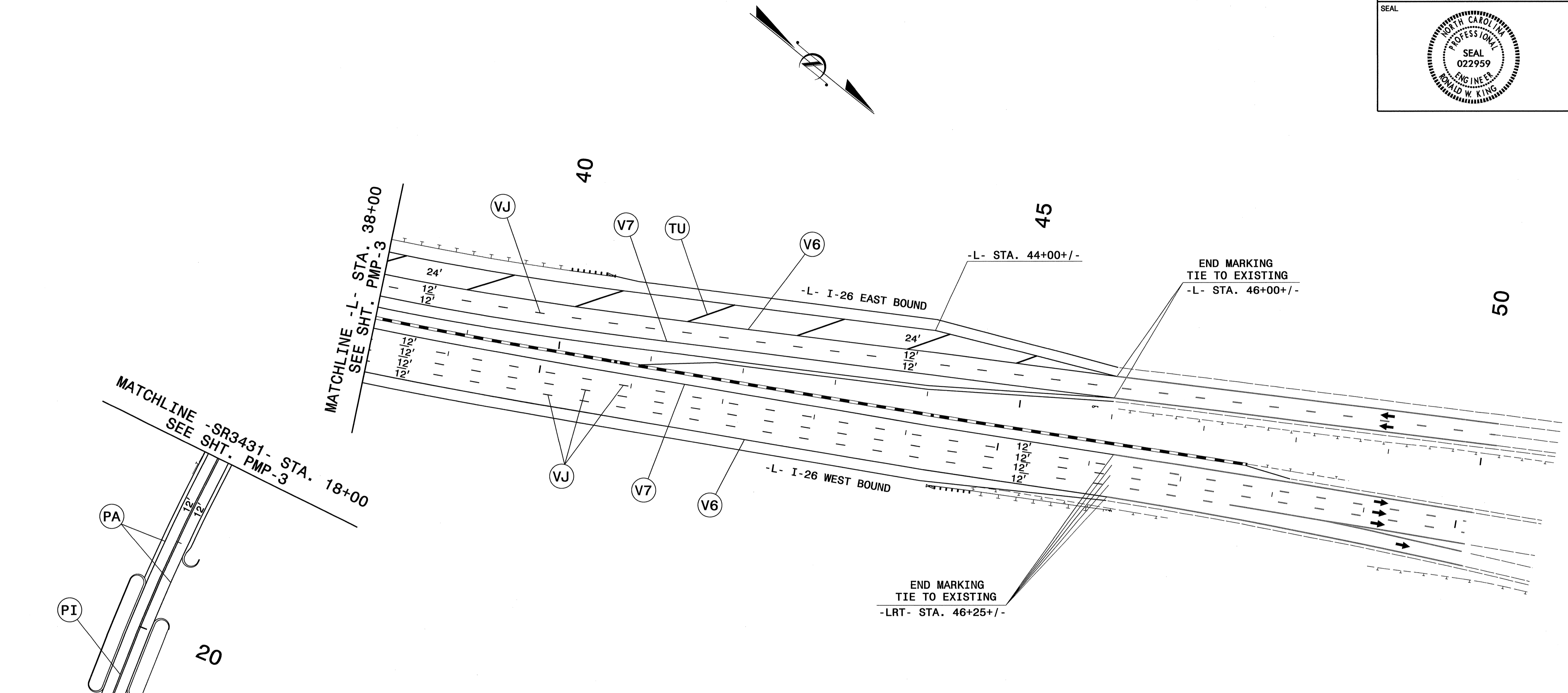
PAVEMENT MARKING LEGEND	
COLD APPLIED PLASTIC	
(CU)	WHITE DIAGONAL (12")
PAINT	
(P8)	2 FT.-6FT./SP WHITE MINISKIP (4")
(PA)	WHITE EDGELINE (4")
(PI)	YELLOW DOUBLE CENTER (4")
THERMOPLASTIC	
(TU)	WHITE DIAGONAL (12")
POLYUREA	
(V6)	WHITE EDGELINE (6")
(V7)	YELLOW EDGELINE (6")
(VJ)	10 FT. WHITE SKIP (6")
(VK)	3FT.-9FT./SP WHITE MINISKIP (6")



PAVEMENT MARKING DETAIL

10-MAY-2012 11:43
 R:\T\offr\Signing\CADD\PM\B-5178_Sgn_PMP-1.dgn
 dibeard

TIP NO. B-5178	SHEET NO. PMP-4
APPROVED: <i>[Signature]</i>	
DATE: _____	
SEAL	



PAVEMENT MARKING LEGEND	
PAINT	
(PA)	WHITE EDGELINE (4")
(PI)	YELLOW DOUBLE CENTER (4")
THERMOPLASTIC	
(TU)	WHITE DIAGONAL (12")
POLYUREA	
(V6)	WHITE EDGELINE (6")
(V7)	YELLOW EDGELINE (6")
(VJ)	10 FT. WHITE SKIP (6")

PAVEMENT MARKING DETAIL

10-MAY-2012 11:51
 R:\Traffic\Signing\CADD\B-5178_Sgn_PMP_2.dgn
 AT TE244736
 dhbeard