

09/08/99

TIP PROJECT: B-4028

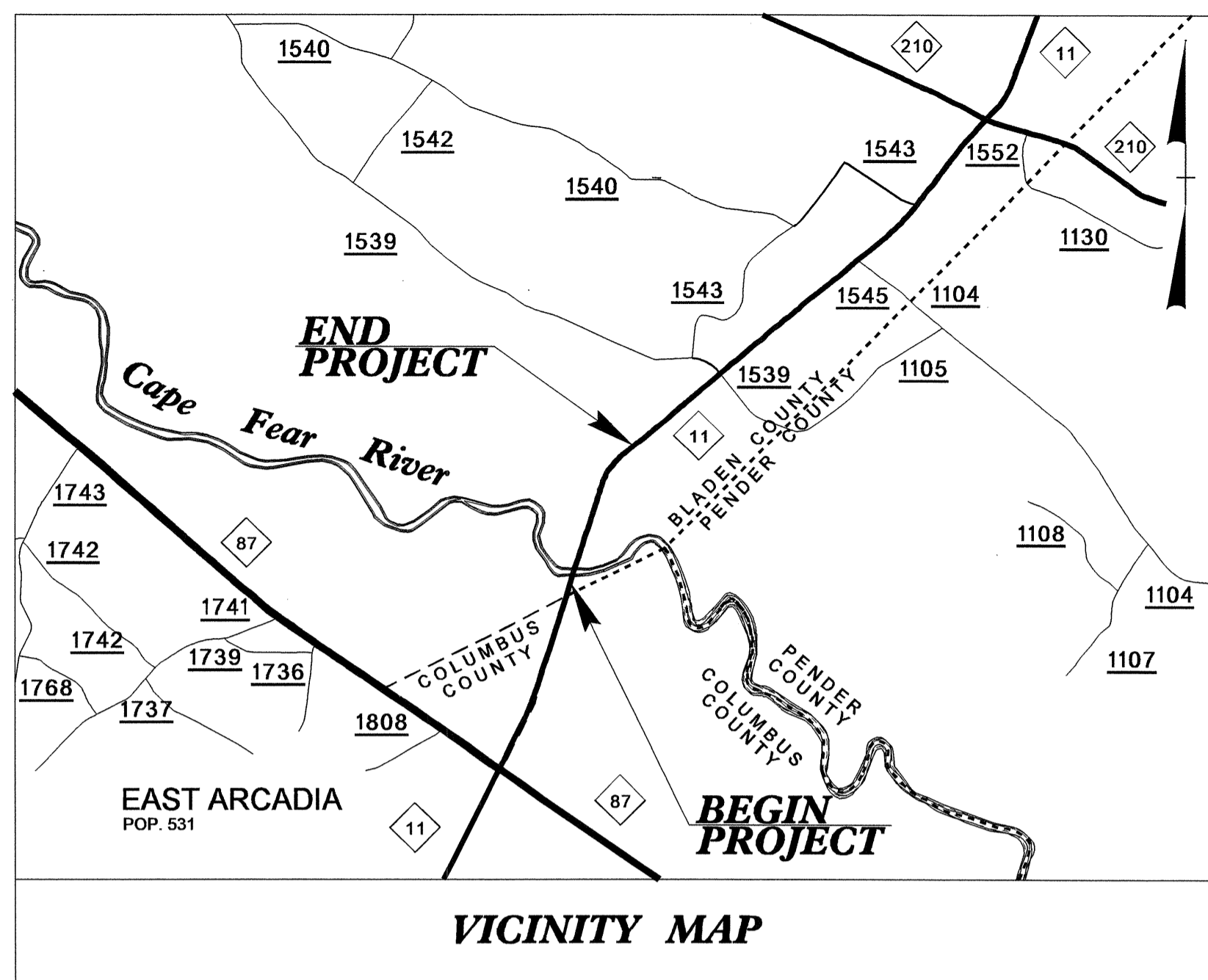
T.I.P. NO.	SHEET NO.
B-4028	UO-1

STATE OF NORTH CAROLINA  
DIVISION OF HIGHWAYS

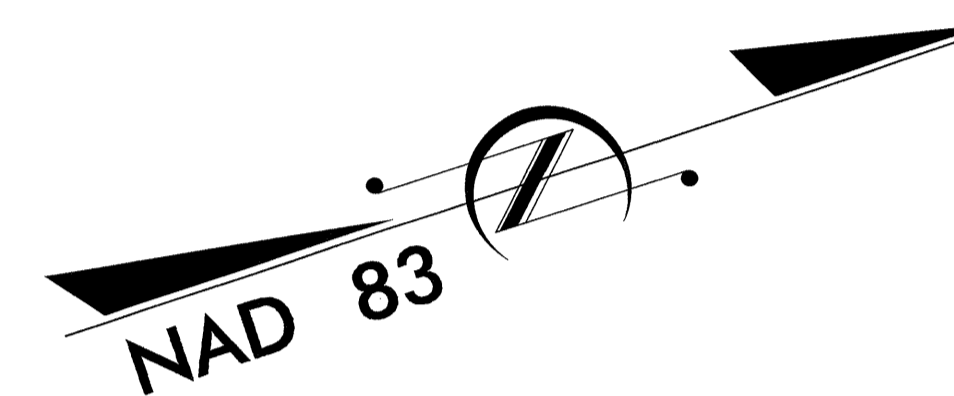
**UTILITIES BY OTHERS PLANS  
BLADEN COUNTY**

**LOCATION: BRIDGE NOS. 12, 18 AND 42 OVER CAPE FEAR RIVER AND OVERFLOW ON NC 11**

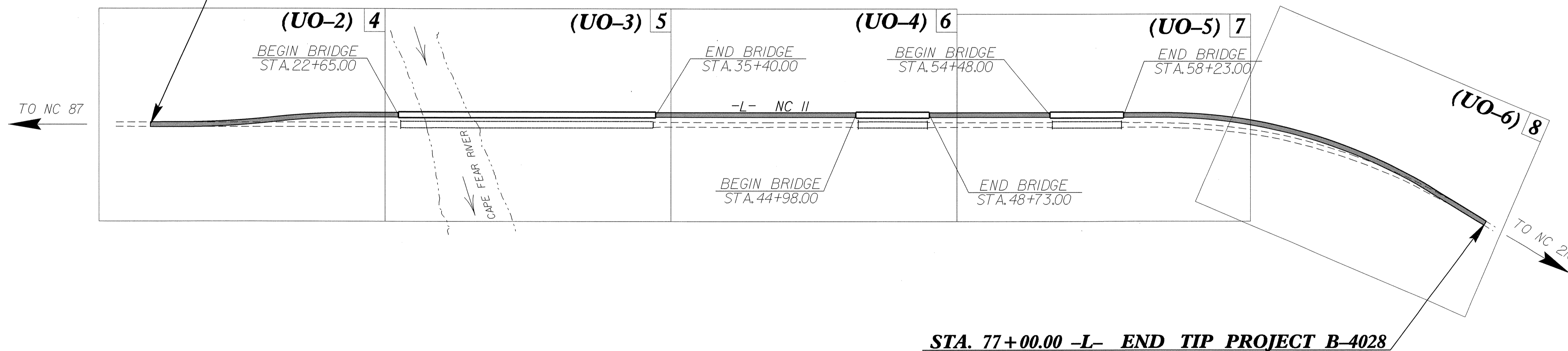
**TYPE OF WORK: UTILITIES RELOCATION**



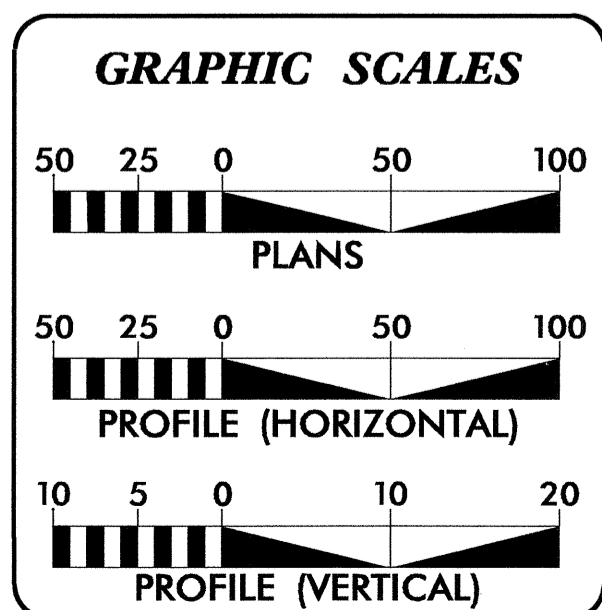
VICINITY MAP



STA. 10+50.00 -L- BEGIN TIP PROJECT B-4028



STA. 77+00.00 -L- END TIP PROJECT B-4028



INDEX OF SHEETS	
SHEET NO.	DESCRIPTION
UO-1	TITLE SHEET
UO-2 THRU UO-6	UTILITY BY OTHERS PLAN SHEETS

UTILITY OWNERS ON PROJECT
(1) Four County EMC (Power)
(2) EarthLink (Telephone)
(3) AT&T (Telephone)

PREPARED IN THE OFFICE OF:  
**DIVISION OF HIGHWAYS  
UTILITIES UNIT  
UTILITIES ENGINEERING**

1591 MAIL SERVICES CENTER  
RALEIGH NC 27699-1591  
PHONE (919) 707-6690  
FAX (919) 250-4151

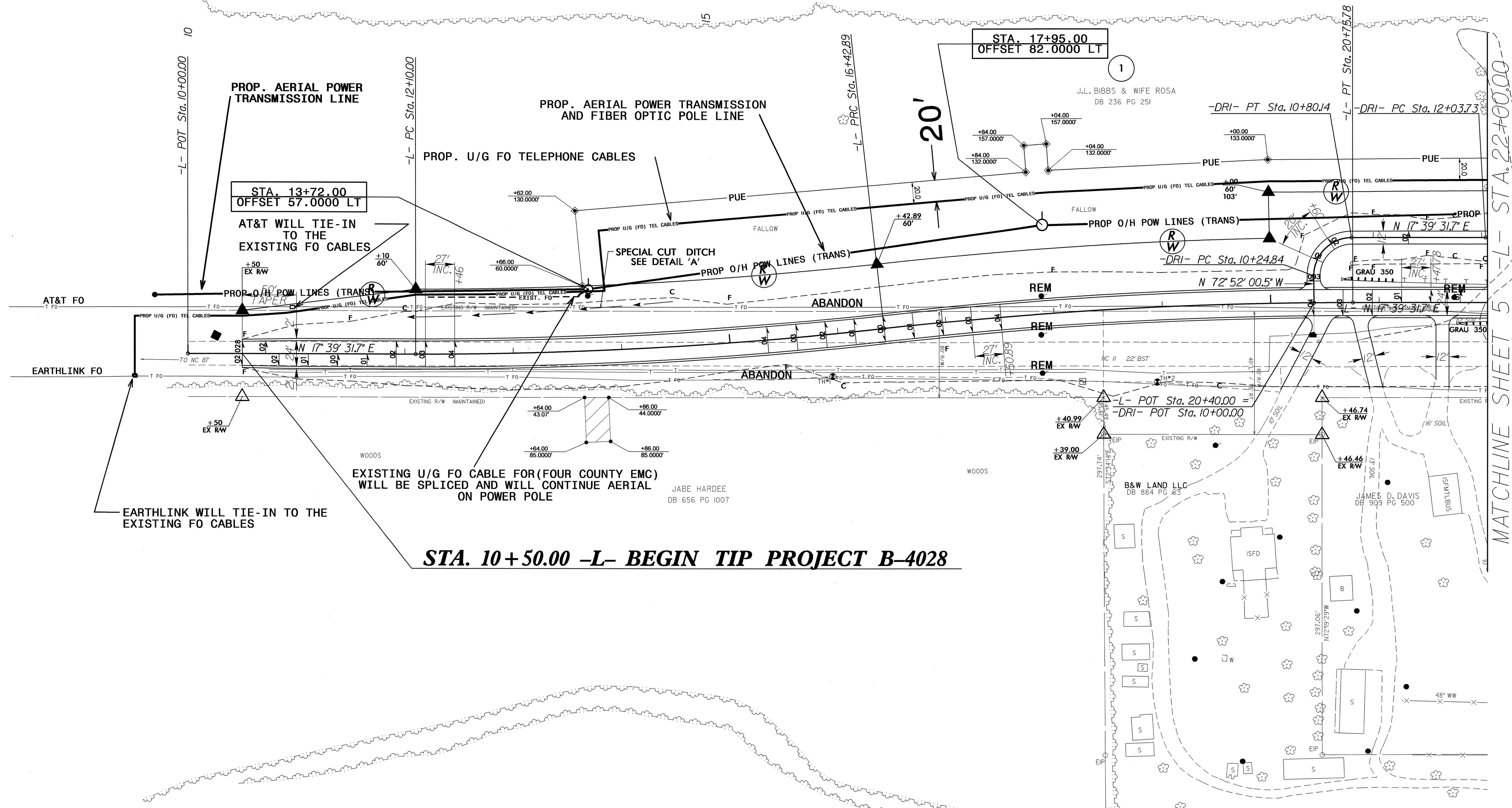
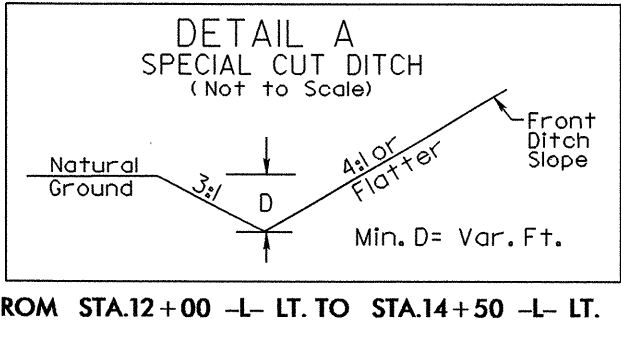
**Roger Worthington, P.E.** UTILITIES SECTION ENGINEER  
**Corey Bousquet, P.E.** UTILITIES SQUAD LEADER PROJECT ENGINEER  
**Nabil Hamdan** UTILITIES PROJECT DESIGNER

18-JUN-2012 10:19  
R:\Utilities\VRdy\_Ut\Proj\b4028\_rdy\_tsh.dgn  
\$\$\$\$\$USERNAME\$\$\$\$\$

UTILITIES BY OTHERS

NOTE:  
ALL PROPOSED UTILITY WORK SHOWN ON THIS SHEET WILL BE DONE BY OTHERS

-L-		-DRI-	
PI Sta 14+26.67	PI Sta 18+59.56	PI Sta 10+60.17	PI Sta 12+43.01
$\Delta = 6' 21' 34.8''$ (LT)	$\Delta = 6' 21' 34.8''$ (RT)	$\Delta = 90' 31' 32.2''$ (RT)	$\Delta = 96' 35' 49.4''$ (LT)
D = 128' 08.8"	D = 128' 08.8"	D = 163' 42' 08.0"	D = 163' 42' 08.0"
L = 432.89'	L = 432.89'	L = 55.30'	L = 59.01'
T = 216.67'	T = 216.67'	T = 35.32'	T = 39.28'
R = 3,900.00'	R = 3,900.00'	R = 35.00'	R = 35.00'
SE = 04	SE = 04		



**STA. 10+50.00 -L- BEGIN TIP PROJECT B-4028**

5/14/99

18-JUN-2012 10:46  
R:\11\11\18-JUN-2012 10:46  
BIBBS\PROJECTS\B-4028-rdy\_psh4\_L002.dgn

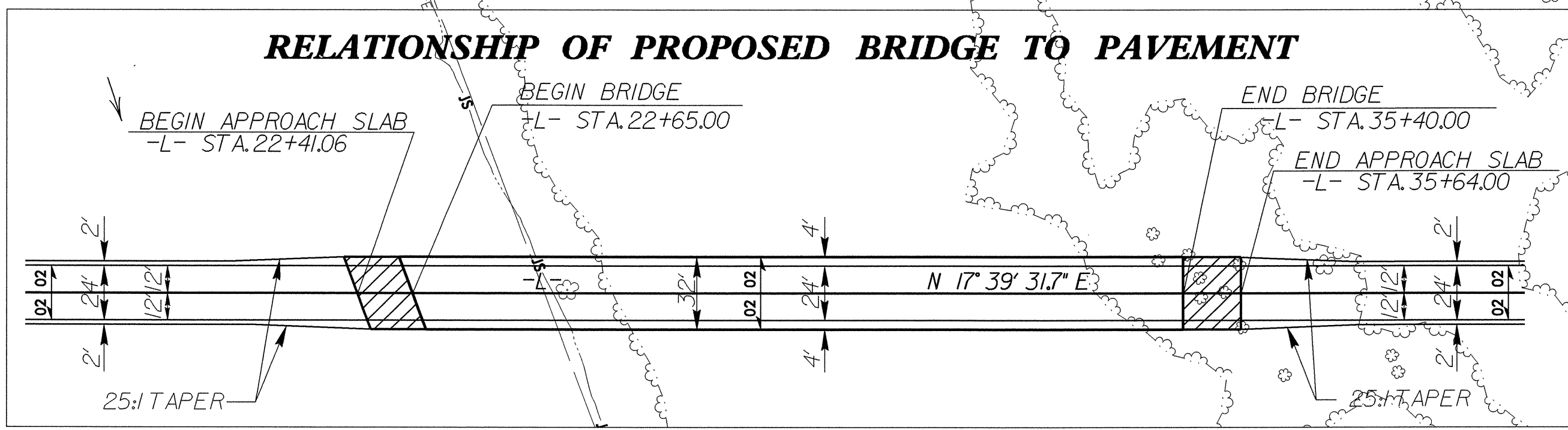
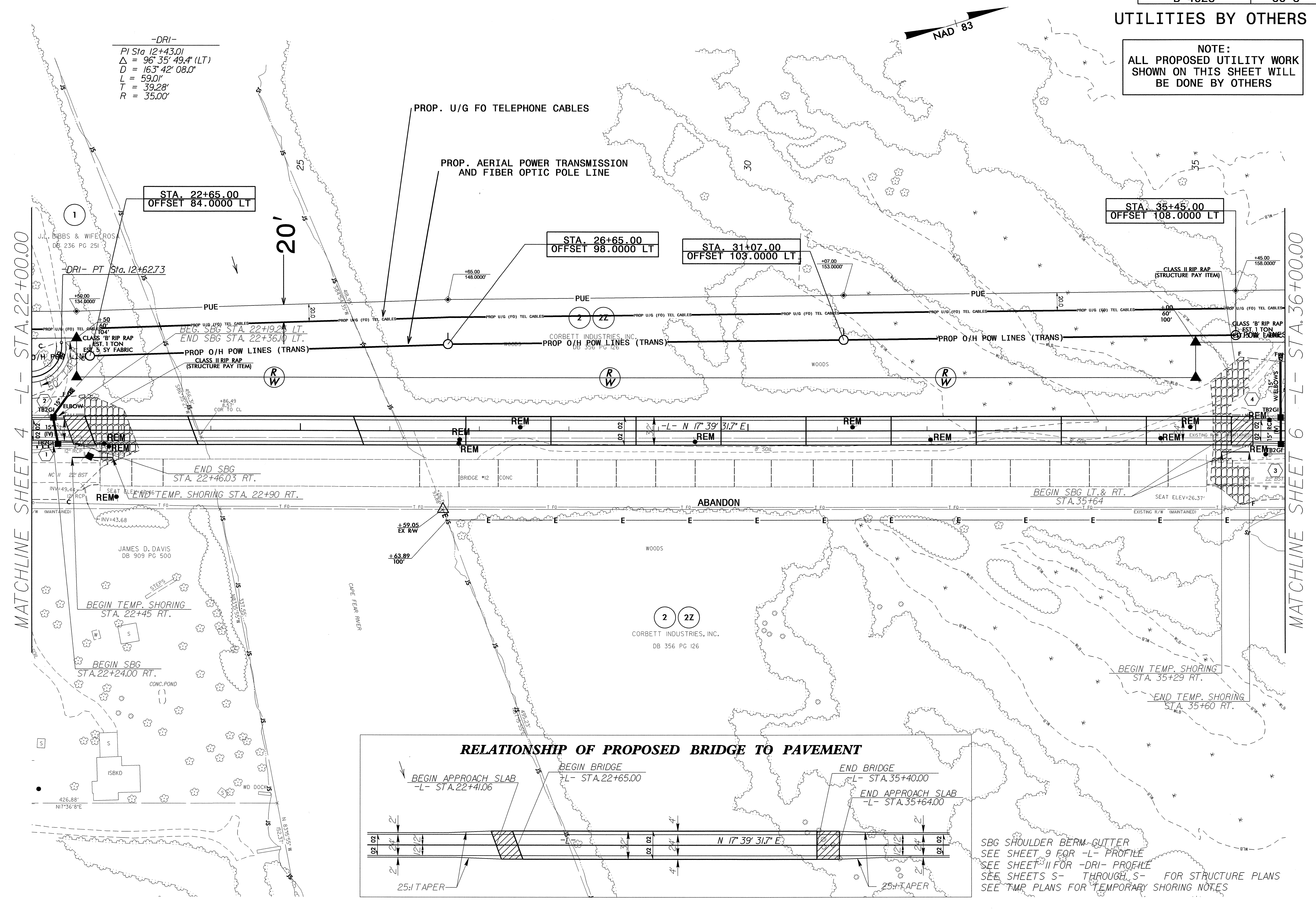
**UTILITIES BY OTHERS**

**NOTE:**  
 ALL PROPOSED UTILITY WORK  
 SHOWN ON THIS SHEET WILL  
 BE DONE BY OTHERS

-DRI-  
 PI Sta. 12+43.01  
 $\Delta = 96^{\circ} 35' 49.4" (LT)$   
 $D = 163^{\circ} 42' 08.0"$   
 $L = 59.0'$   
 $T = 39.28'$   
 $R = 35.00'$

MATCHLINE SHEET 4 -L- STA. 22+00.00

MATCHLINE SHEET 6 -L- STA. 36+00.00

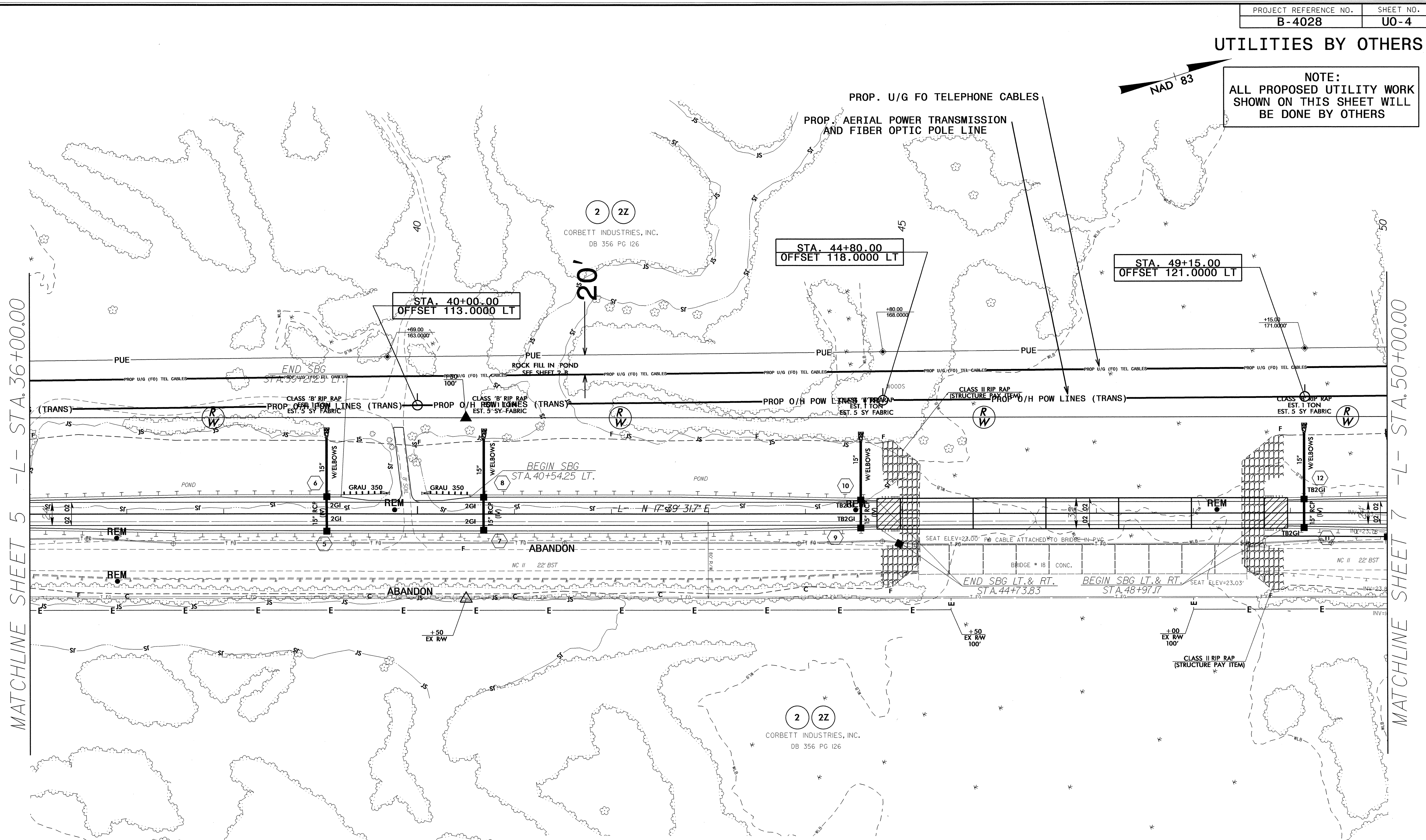


SBG SHOULDER BERM CUTTER  
 SEE SHEET 9 FOR -L- PROFILE  
 SEE SHEET 11 FOR -DRI- PROFILE  
 SEE SHEETS S- THROUGH S- FOR STRUCTURE PLANS  
 SEE TMR PLANS FOR TEMPORARY SHORING NOTES

5/14/99  
 18-JUN-2012 10:15  
 RAU  
 C:\PROJECTS\B-4028-rd\psh5-U03.dgn  
 \$\$\$USERNAME\$\$\$

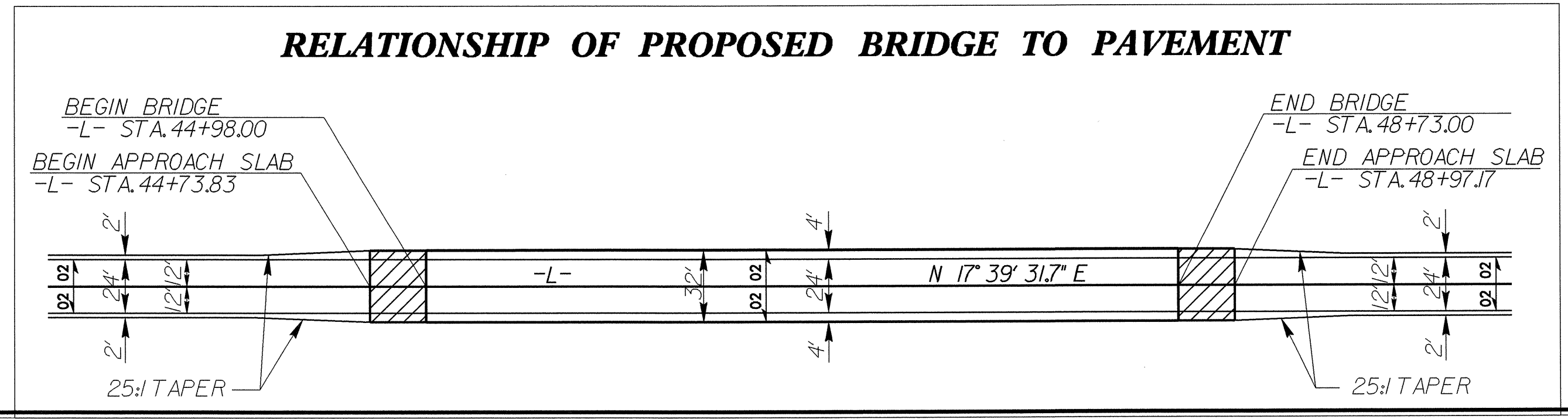
UTILITIES BY OTHERS

NOTE:  
ALL PROPOSED UTILITY WORK  
SHOWN ON THIS SHEET WILL  
BE DONE BY OTHERS



MATCHLINE SHEET 5 -L- STA. 36+00.00

MATCHLINE SHEET 7 -L- STA. 50+00.00



5/14/99

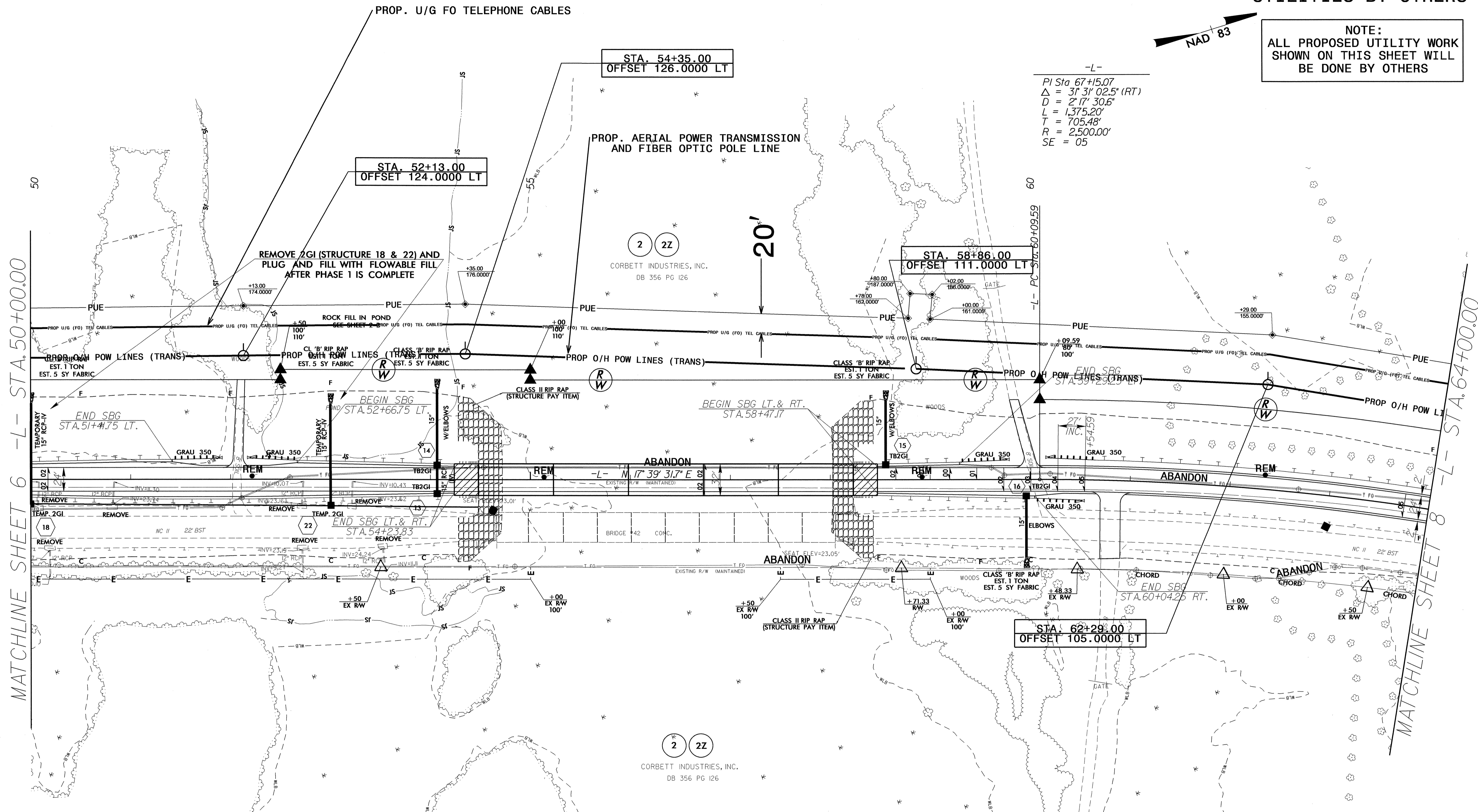
18-JUN-2012 10:14  
R:\11\18-JUN-2012 10:14  
3:33:58 PM  
J:\b4028\_rdy\_psh6\_U04.dgn

**UTILITIES BY OTHERS**

**NOTE:**  
ALL PROPOSED UTILITY WORK SHOWN ON THIS SHEET WILL BE DONE BY OTHERS



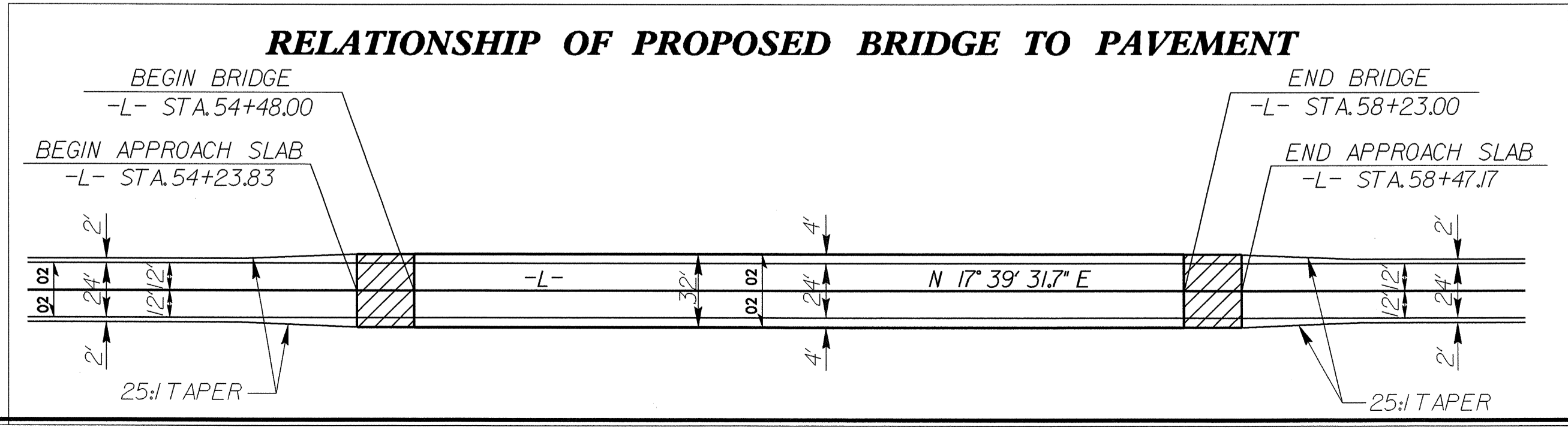
-L-  
PI Sta 67+15.07  
Δ = 31° 31' 02.5" (RT)  
D = 2' 17" 30.6"  
L = 1,375.20'  
T = 705.48'  
R = 2,500.00'  
SE = 05



MATCHLINE SHEET 6 -L- STA.50+00.00

MATCHLINE SHEET 8 -L- STA.64+00.00

REVISIONS



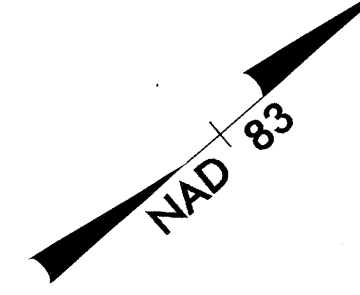
SBG SHOULDER BERM GUT  
SEE SHEET 10 FOR -L-  
SEE SHEETS S- THRC  
SEE TMP PLANS FOR TE

5/14/99

RA\18-JUN-2012 10:14  
J:\b4028\_rdy-ps77\_U05.dgn

**UTILITIES BY OTHERS**

**NOTE:**  
ALL PROPOSED UTILITY WORK  
SHOWN ON THIS SHEET WILL  
BE DONE BY OTHERS



-L-  
PI Sta 67+15.07  
 $\Delta = 3^\circ 31' 02.5''$  (RT)  
 $D = 2' 17' 30.6''$   
 $L = 1,375.20'$   
 $T = 705.48'$   
 $R = 2,500.00'$   
 $SE = 05$

STA. 65+55.00  
OFFSET 102.0000 LT

PROP. U/G FO TELEPHONE CABLES  
(AT&T AND EARTHLINK  
4" AND 5" CONDUIT)

PROP. AERIAL POWER TRANSMISSION  
AND FIBER OPTIC POLE LINE

(2) (2Z)  
CORBETT INDUSTRIES, INC.  
DB 356 PG 126

AT&T WILL TIE-IN  
TO THE  
EXISTING FO CABLES

RELOCATE  
EXIST. GATE

20'

STA. 64+00.00

MATCHLINE SHEET

(2) (2Z)  
CORBETT INDUSTRIES, INC.  
DB 356 PG 126

PROP. AERIAL POWER TRANSMISSION  
POLE LINE

**STA. 77+00.00 -L- END TIP PROJECT B-4028**

STA. 75+52.00  
OFFSET 59.0000 RT

PROP. AERIAL FO CABLE FOR  
(FOUR COUNTY EMC) ON POWER POLE  
WILL BE SPICED AND WILL CONTINUE U/G

SBG SHOULDER BERM GUTTER  
SEE SHEET II FOR -L- PROFILE

5/14/99

R:\11\18-JUN-2012 10:33 3333\PROJECTS\B-4028-UO-6\B-4028-rdu-psb8\_UO6.dgn