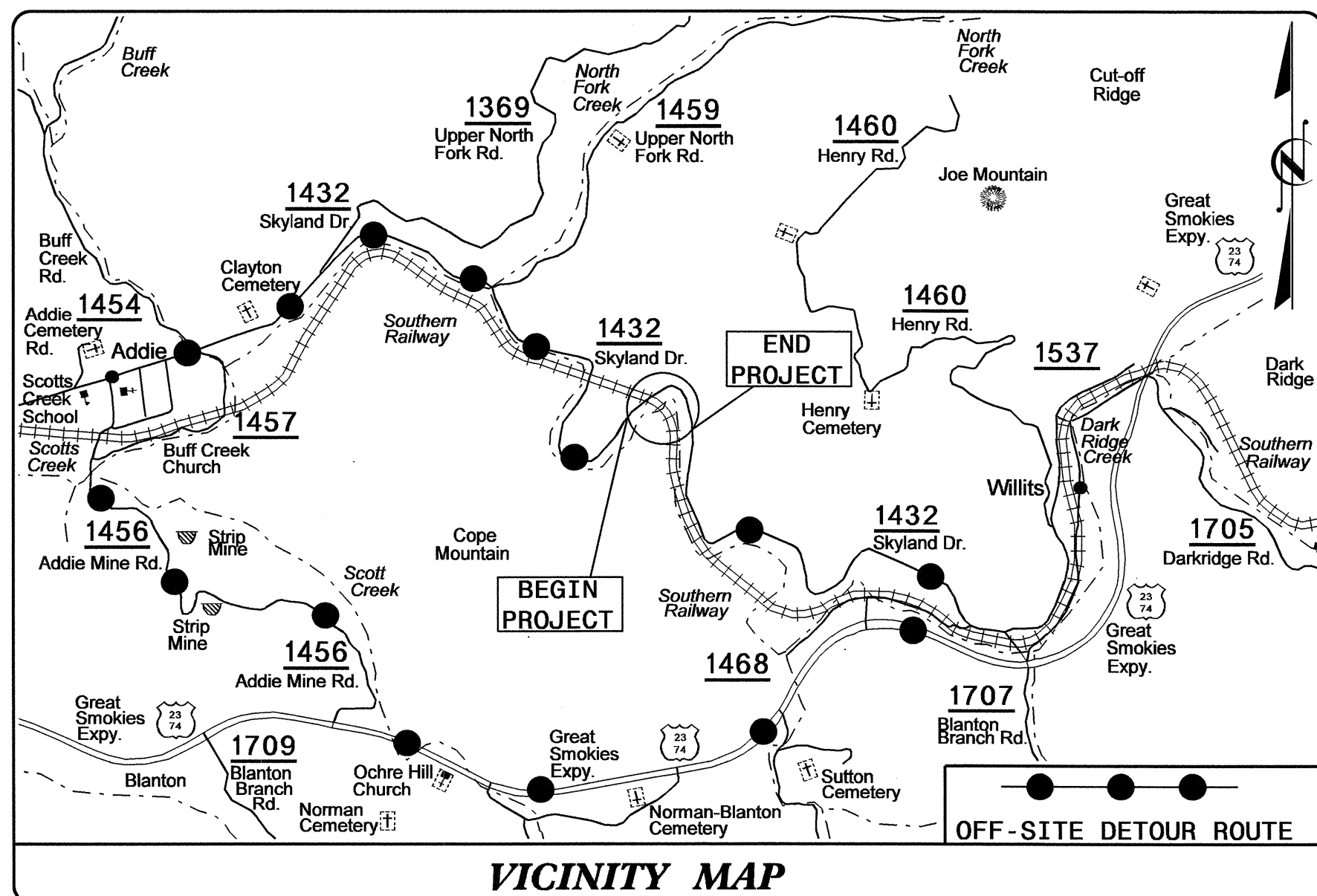


09/08/99

See Sheet 1-A For Index of Sheets



STATE OF NORTH CAROLINA
DIVISION OF HIGHWAYS

T.I.P. NO.	SHEET NO.
B-4162	UO-1

**UTILITIES BY OTHERS PLANS
JACKSON COUNTY**

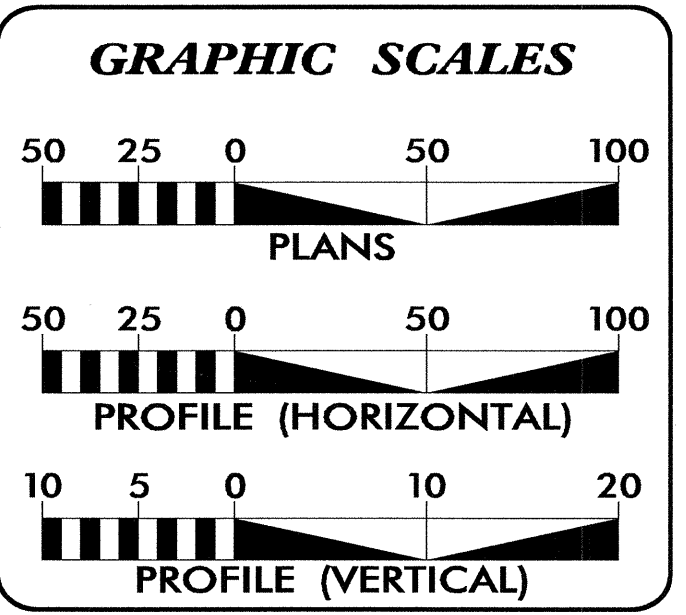
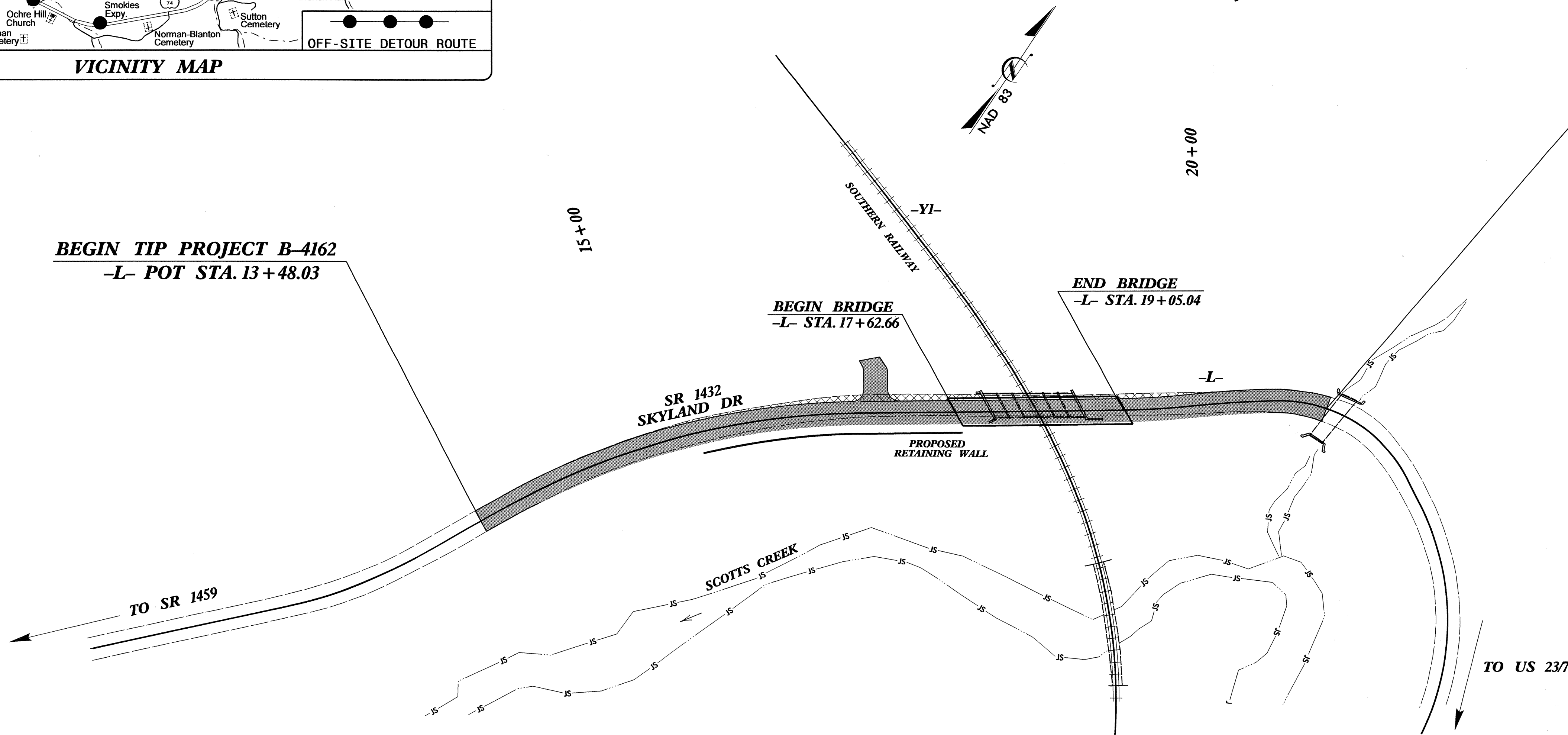
LOCATION: BRIDGE NO. 320 OVER SOUTHERN RAILWAY ON SR 1432 (SKYLAND DRIVE)

TYPE OF WORK: POWER DISTRIBUTION, TELEPHONE

TIP PROJECT: B-4162

BEGIN TIP PROJECT B-4162
-L- POT STA. 13+48.03

END TIP PROJECT B-4162
-L- POC Sta. 20+75.00



INDEX OF SHEETS

SHEET NO.	DESCRIPTION
UO-1	TITLE SHEET
UO-2	UTILITIES BY OTHERS PLAN SHEET

UTILITY OWNERS ON PROJECT

- (1) Power Distribution - Duke Energy
- (2) Telephone - Frontier Communications

PREPARED IN THE OFFICE OF:
**DIVISION OF HIGHWAYS
UTILITIES ENGINEERING SECTION**

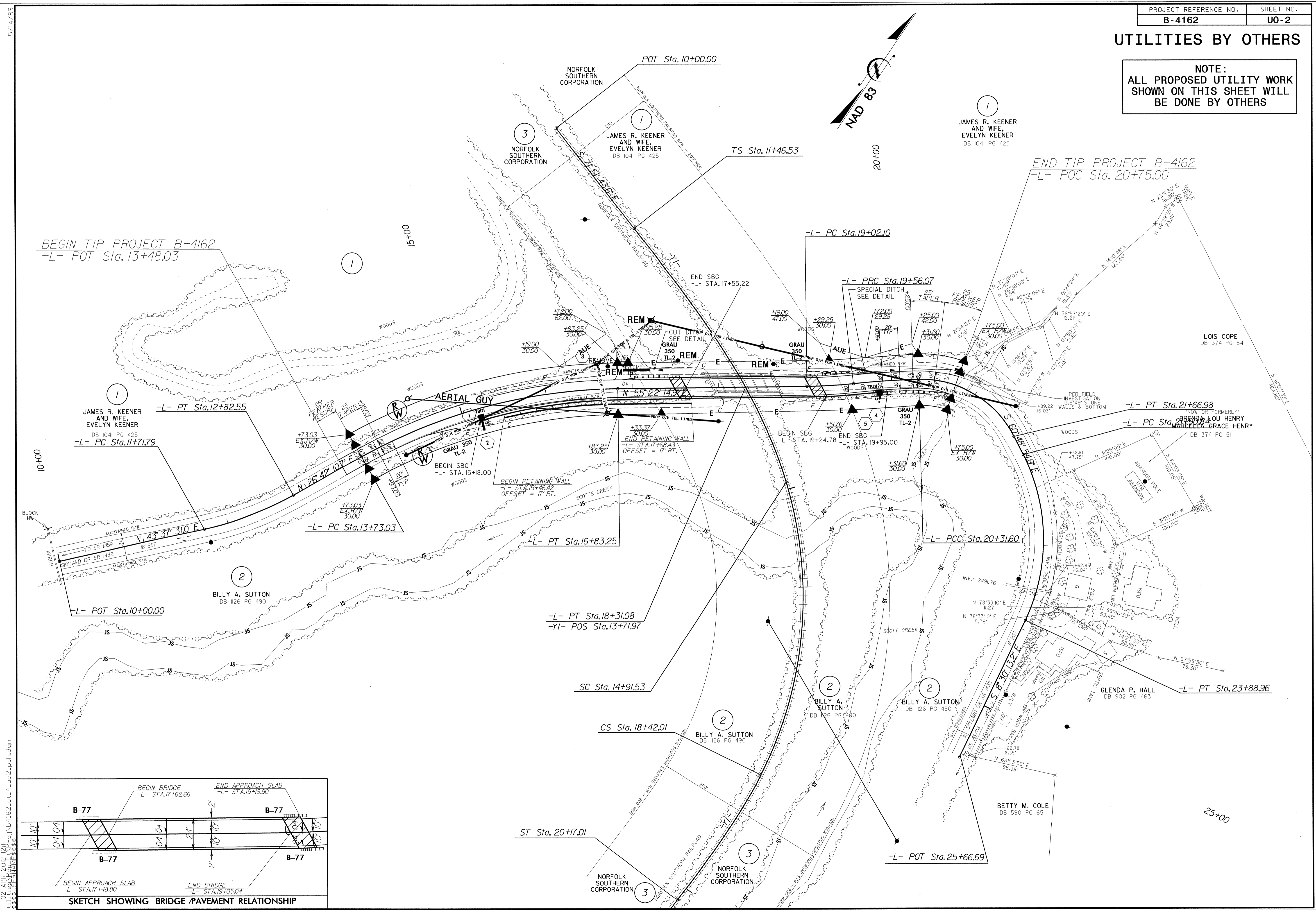
1591 MAIL SERVICES CENTER
RALEIGH, NC 27699-1591
PHONE (919) 707-6690
FAX (919) 250-4151

Roger Worthington, P.E. UTILITIES SECTION ENGINEER
Carl Barclay, P.E. UTILITIES SQUAD LEADER PROJECT ENGINEER
Bo Hemphill, P.E. UTILITIES PROJECT DESIGNER

30-MAR-2012 13:19 R:\Utilities\RDY_Ut\Proj\b4162_ut_title_uol_psh.dgn \$\$\$USERNAME\$\$\$

UTILITIES BY OTHERS

NOTE:
ALL PROPOSED UTILITY WORK
SHOWN ON THIS SHEET WILL
BE DONE BY OTHERS



BEGIN TIP PROJECT B-4162
-L- POT Sta. 13+48.03

END TIP PROJECT B-4162
-L- POC Sta. 20+75.00

JAMES R. KEENER AND WIFE, EVELYN KEENER
DB 1041 PG 425
-L- PT Sta. 12+82.55
-L- PC Sta. 11+71.79

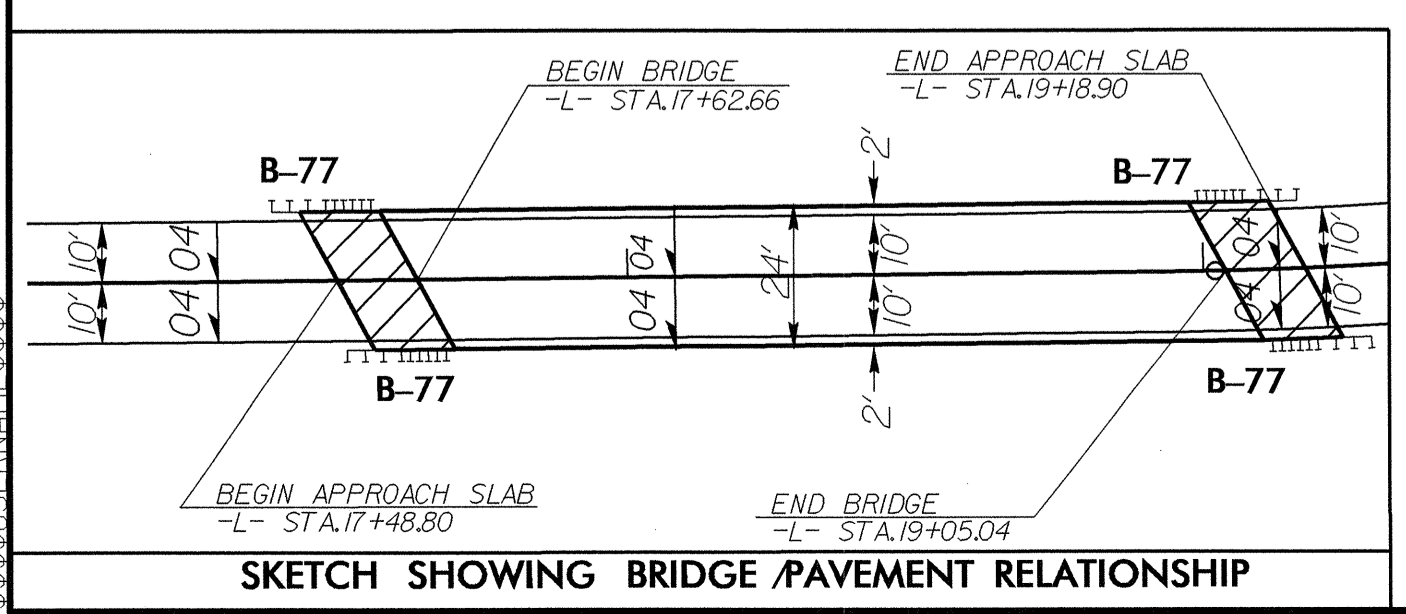
BILLY A. SUTTON
DB 1126 PG 490
-L- POT Sta. 10+00.00

-L- PT Sta. 18+31.08
-YI- POS Sta. 13+71.97

LOIS COPE
DB 374 PG 54
-L- PT Sta. 21+66.98
-L- PC Sta. 20+31.60

GLENDA P. HALL
DB 902 PG 463
-L- PT Sta. 23+88.96

BETTY M. COLE
DB 590 PG 65
-L- POT Sta. 25+66.69



5/14/99
02-APR-2012 12:11
r:\utilities\proj\4162\ut_4_uo2_psh.dgn