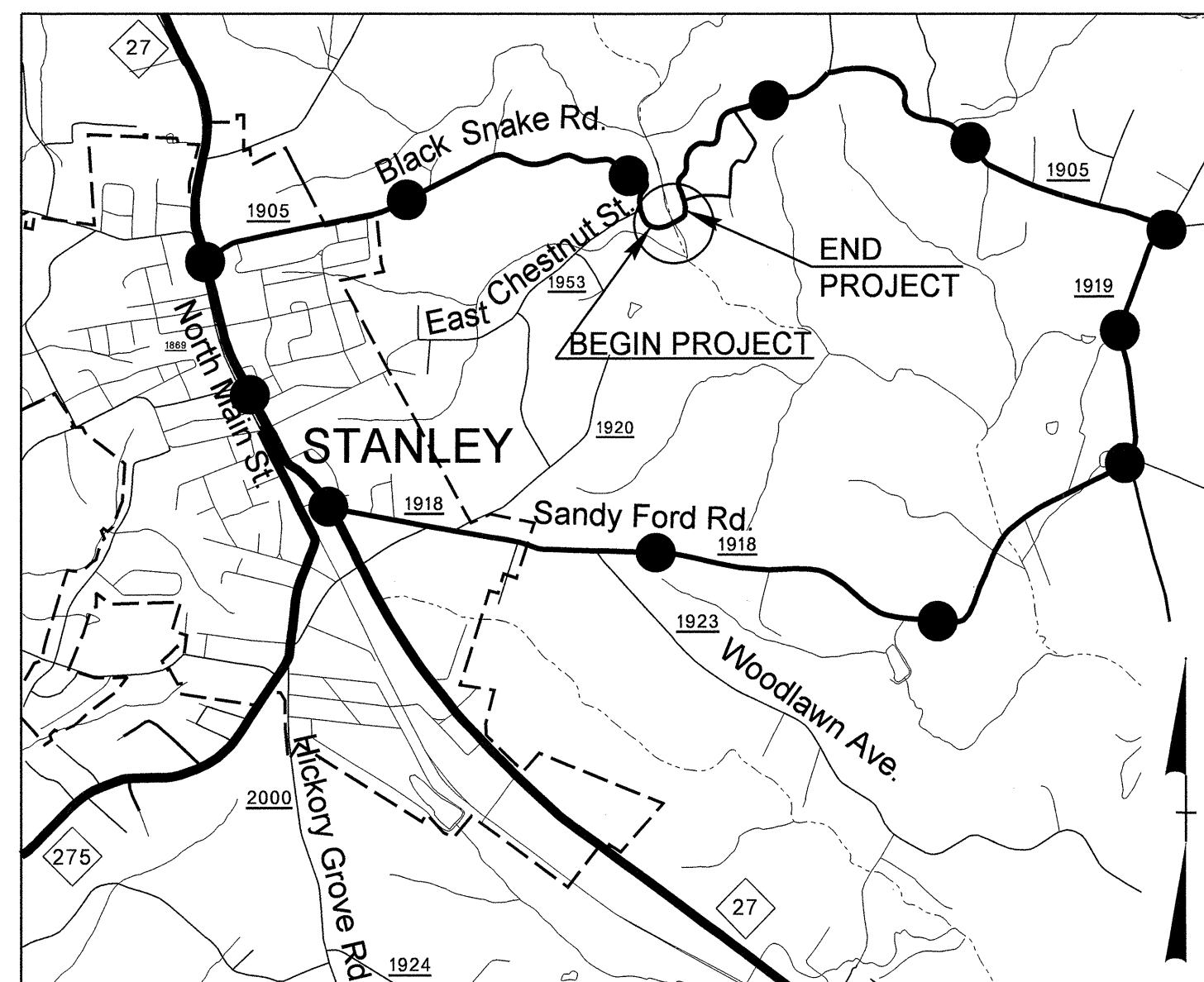


TIP PROJECT: B-4118

STATE OF NORTH CAROLINA
DIVISION OF HIGHWAYS

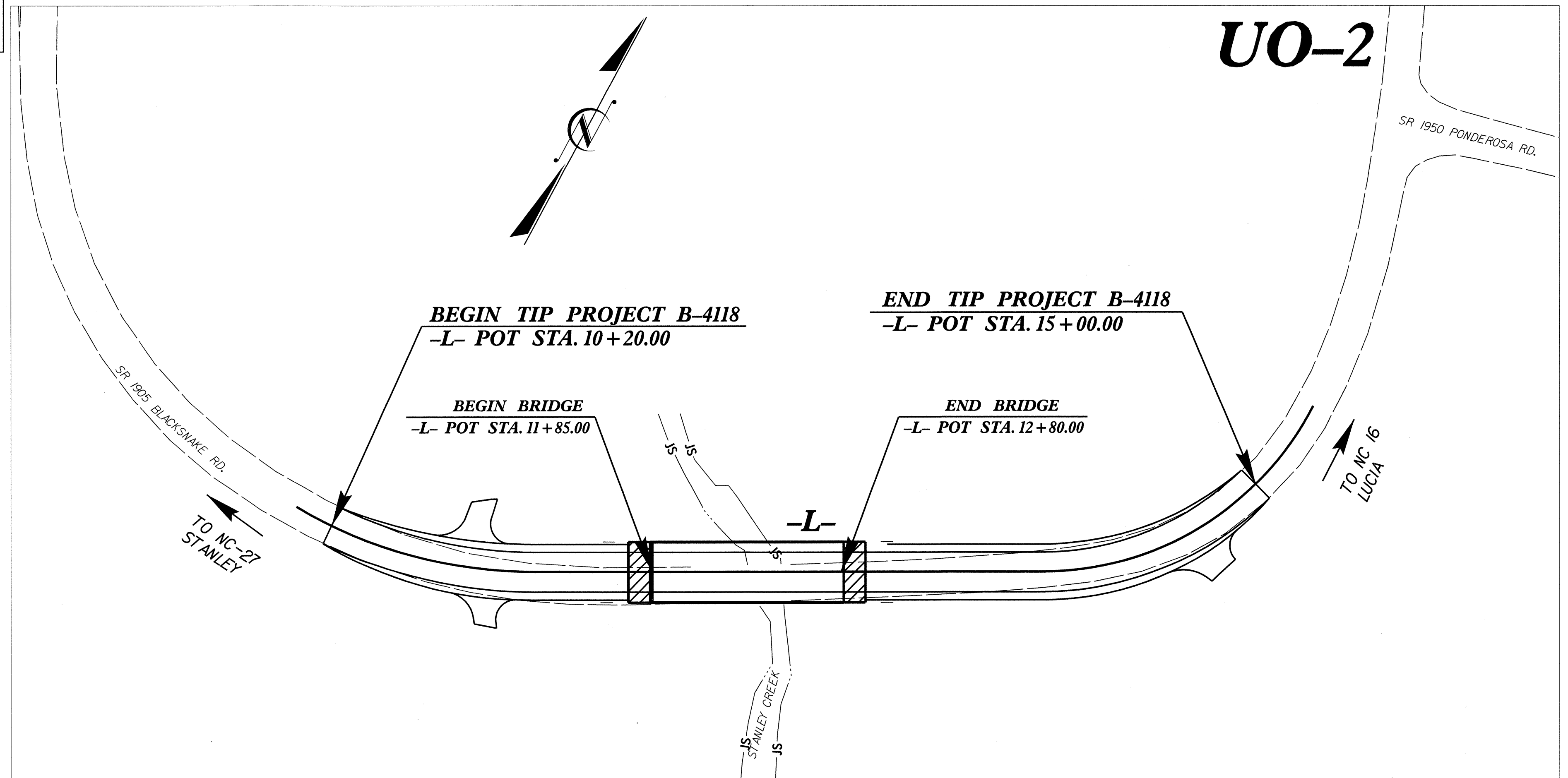
T.I.P. NO.	SHEET NO.
B-4118	UO-1



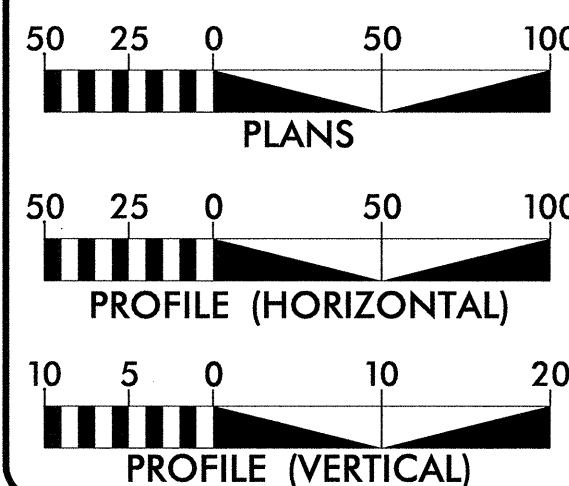
VICINITY MAP SHOWING LOCATION OF PROJECT B-4118
● ● ● ● ● ● DETOUR ROUTE

UTILITIES BY OTHERS PLANS
GASTON COUNTY

**LOCATION: BRIDGE NO. 200 ON SR 1205
(BLACKSNAKE RD.) OVER STANLEY CREEK**
TYPE OF WORK: UTILITY BY OTHERS RELOCATION



GRAPHIC SCALES



INDEX OF SHEETS

SHEET NO.	DESCRIPTION
UO-1	TITLE SHEET
UO-2	UTILITY BY OTHERS PLAN SHEETS

UTILITY OWNERS ON PROJECT

- (1) POWER - DUKE ENERGY
- (2) POWER - ENERGY UNITED
- (3) TELEPHONE - AT&T
- (4) GAS - PSNC ENERGY
- (5) GAS - PIEDMONT NATURAL GAS

UTILITY DESIGN BY:

MA Engineering
CONSULTANTS, INC.
598 East Chatham Street Suite 137 Cary, NC 27511
Phone: 919 297 0220 Fax: 919 297 0221

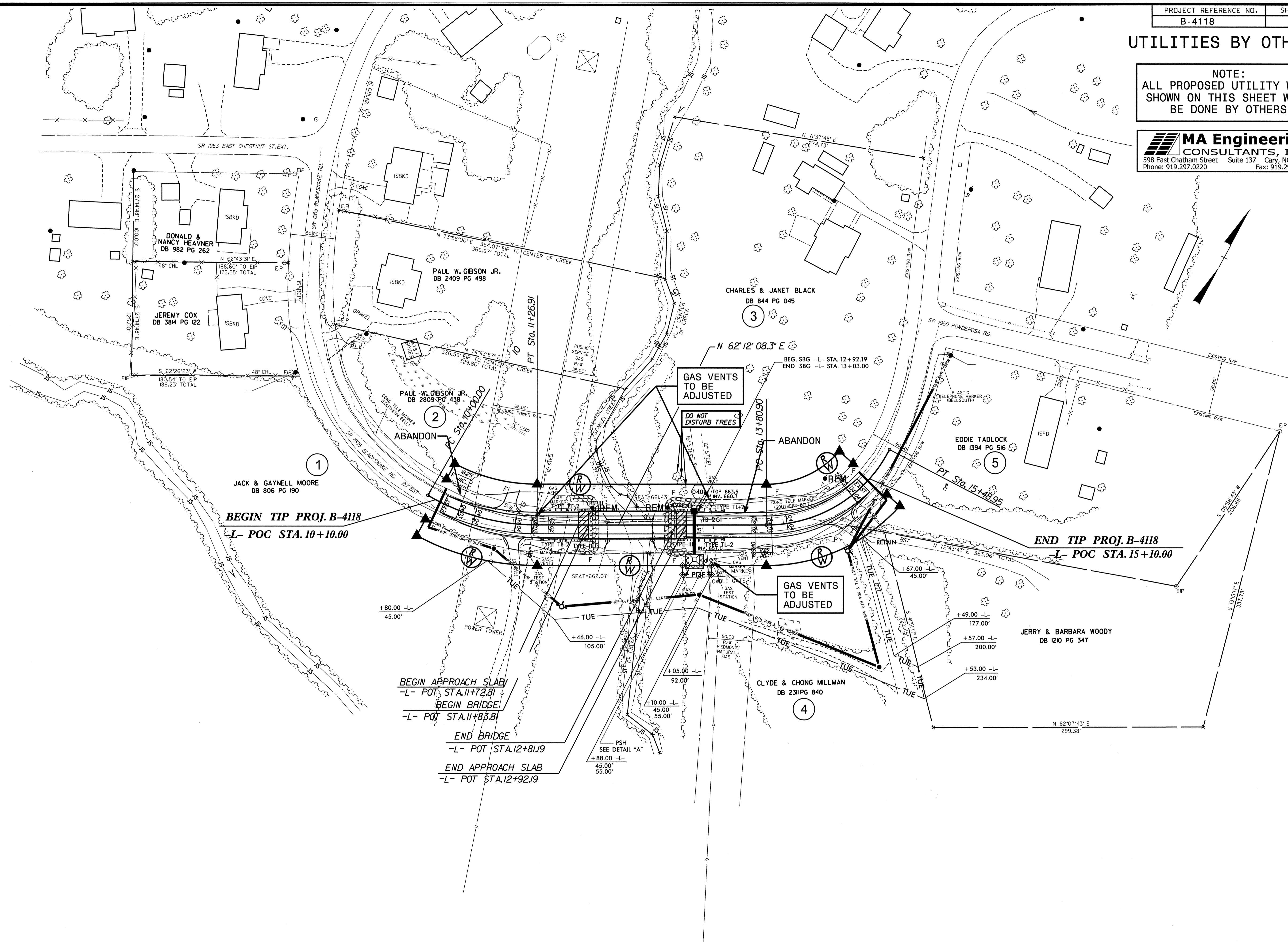
NCDOT PROJECT ENGINEER:
CARL BARCLAY, P.E.
PREPARED FOR:
NORTH CAROLINA
DEPARTMENT OF TRANSPORTATION
UTILITIES UNIT
RALEIGH, NC

\$\$\$\$\$SYTIME\$\$\$\$\$
\$\$\$\$\$CDGN\$\$\$\$\$
\$\$\$\$\$USERSNAME\$\$\$\$\$

UTILITIES BY OTHERS

NOTE:
ALL PROPOSED UTILITY WORK
SHOWN ON THIS SHEET WILL
BE DONE BY OTHERS

MA Engineering
CONSULTANTS, INC
598 East Chatham Street Cary, NC 27511
Phone: 919.297.0220 Suite 137 Fax: 919.297.0221



BEGIN TIP PROJ. B-4118
-L- POC STA. 10+10.00

END TIP PROJ. B-4118
-L- POC STA. 15+10.00

BEGIN APPROACH SLAB
-L- POT STA. 11+72.81
BEGIN BRIDGE
-L- POT STA. 11+83.81
END BRIDGE
-L- POT STA. 12+81.9
END APPROACH SLAB
-L- POT STA. 12+92.9

GAS VENTS
TO BE
ADJUSTED

DO NOT
DISTURB
TREES

GAS VENTS
TO BE
ADJUSTED

8/17/99