

TIP PROJECT: B-4118

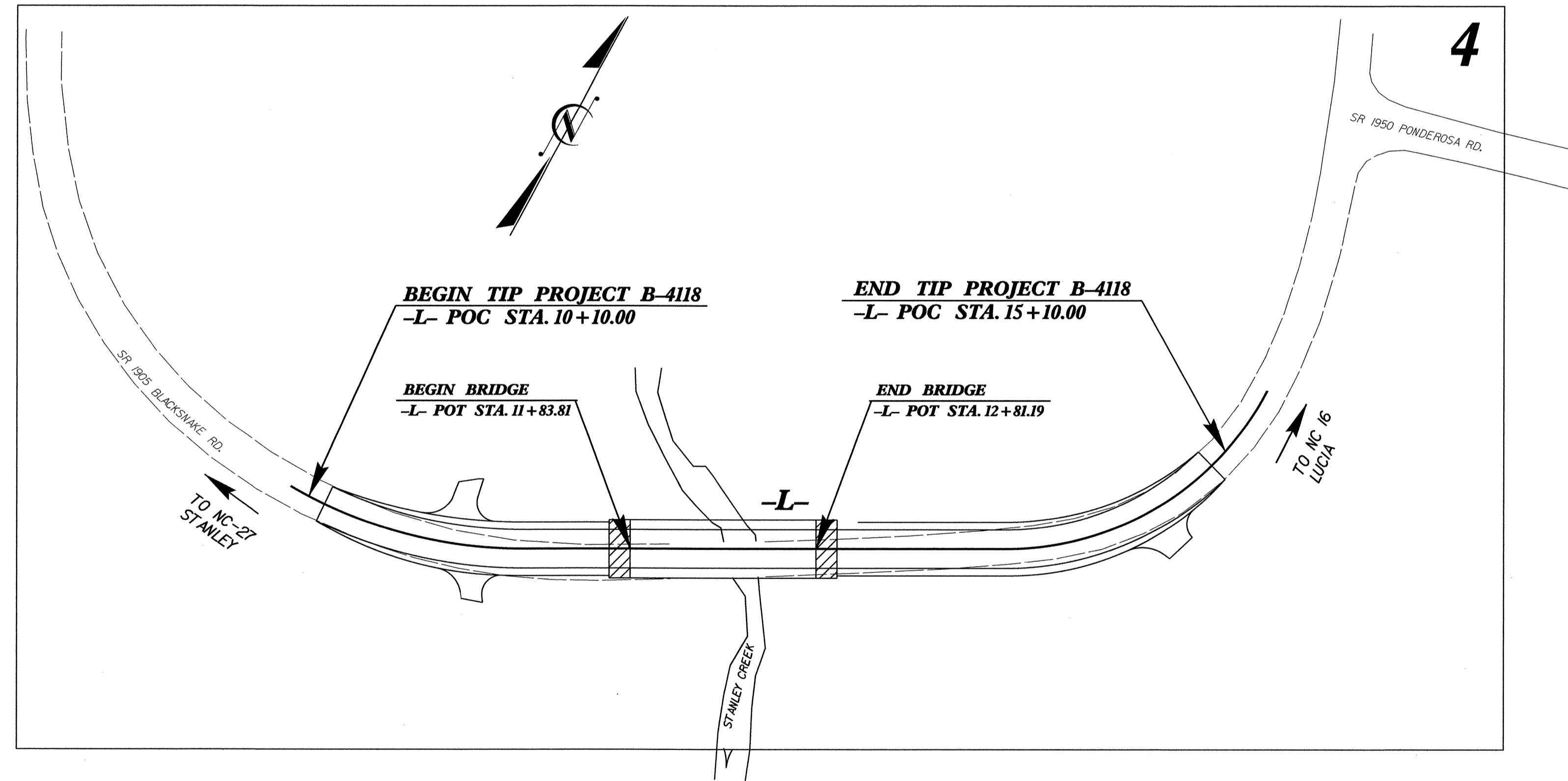
STATE OF NORTH CAROLINA
DIVISION OF HIGHWAYS

PLAN FOR PROPOSED
HIGHWAY EROSION CONTROL

GASTON COUNTY

**LOCATION: BRIDGE NO. 200 ON SR 1905 (BLACKSNAKE RD.)
OVER STANLEY CREEK**

**TYPE OF WORK: GRADING, PAVING, DRAINAGE
AND STRUCTURE**



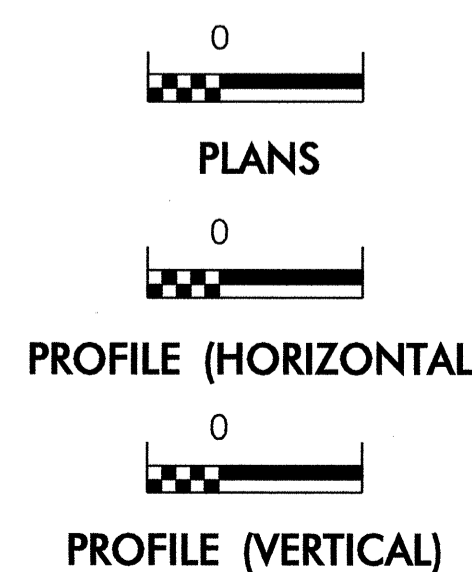
STATE	STATE PROJECT REFERENCE NO.	SHEET NO.	TOTAL SHEETS
N.C.	B-4118	EC-1	
STATE PROJ. NO.	F.A. PROJ. NO.	DESCRIPTION	

EROSION AND SEDIMENT CONTROL MEASURES

Std. #	Description	Symbol
1630.03	Temporary Silt Ditch	TD
1630.05	Temporary Diversion	TD
1605.01	Temporary Silt Fence	III III III
1606.01	Special Sediment Control Fence	△△△△△
1622.01	Temporary Berms and Slope Drains	—
1630.02	Silt Basin Type B	▨
1633.01	Temporary Rock Silt Check Type-A	▨
	Temporary Rock Silt Check Type-A with Matting and Polyacrylamide (PAM)	⊗
1633.02	Temporary Rock Silt Check Type-B	▶
	Wattle / Coir Fiber Wattle	⌒
	Wattle / Coir Fiber Wattle with Polyacrylamide (PAM)	⌒ ⊙
1634.01	Temporary Rock Sediment Dam Type-A	▨
1634.02	Temporary Rock Sediment Dam Type-B	⊙
1635.01	Rock Pipe Inlet Sediment Trap Type-A	⊕
1635.02	Rock Pipe Inlet Sediment Trap Type-B	⊕
1630.04	Stilling Basin	▭
1630.06	Special Stilling Basin	⊕
	Rock Inlet Sediment Trap:	
1632.01	Type A	A
1632.02	Type B	B
1632.03	Type C	C
	Skimmer Basin	▭
	Tiered Skimmer Basin	▭
	Infiltration Basin	▭

**THIS PROJECT CONTAINS
EROSION CONTROL PLANS
FOR CLEARING AND
GRUBBING PHASE OF
CONSTRUCTION.**

GRAPHIC SCALE



ROADSIDE ENVIRONMENTAL UNIT
DIVISION OF HIGHWAYS
STATE OF NORTH CAROLINA

THESE EROSION AND SEDIMENT CONTROL PLANS COMPLY
WITH THE REGULATIONS SET FORTH BY THE
NCG-010000 GENERAL CONSTRUCTION PERMIT EFFECTIVE AUGUST 3, 2011
ISSUED BY THE NORTH CAROLINA DEPARTMENT OF ENVIRONMENT AND
NATURAL RESOURCES DIVISION OF WATER QUALITY.

Prepared In the Office of:
ROADSIDE ENVIRONMENTAL UNIT
1 South Wilmington St.
Raleigh, NC 27611
2012 STANDARD SPECIFICATIONS

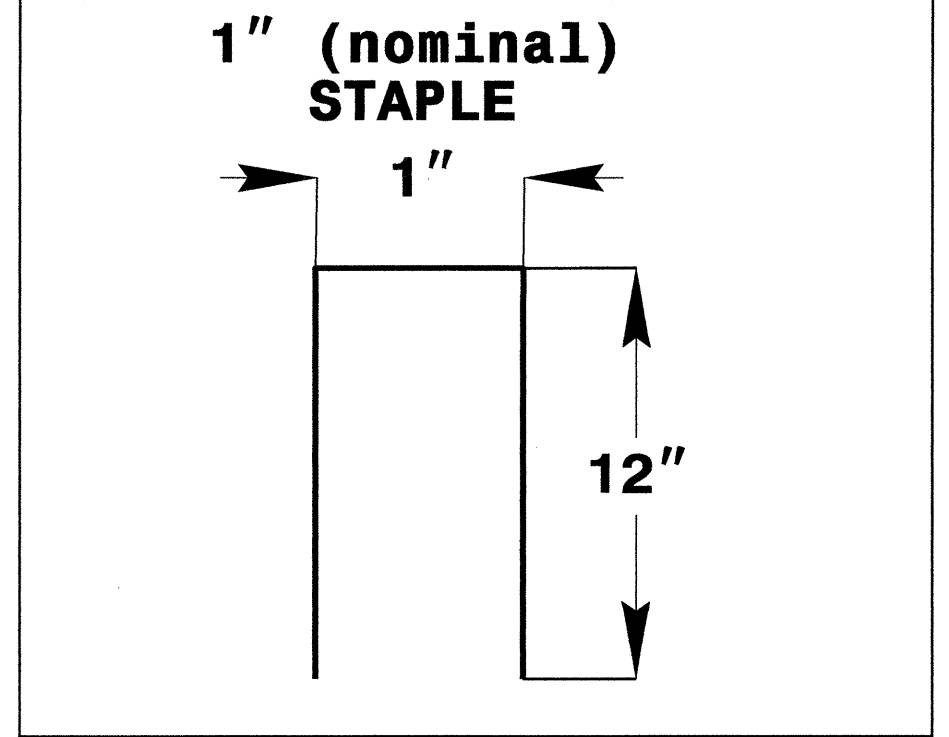
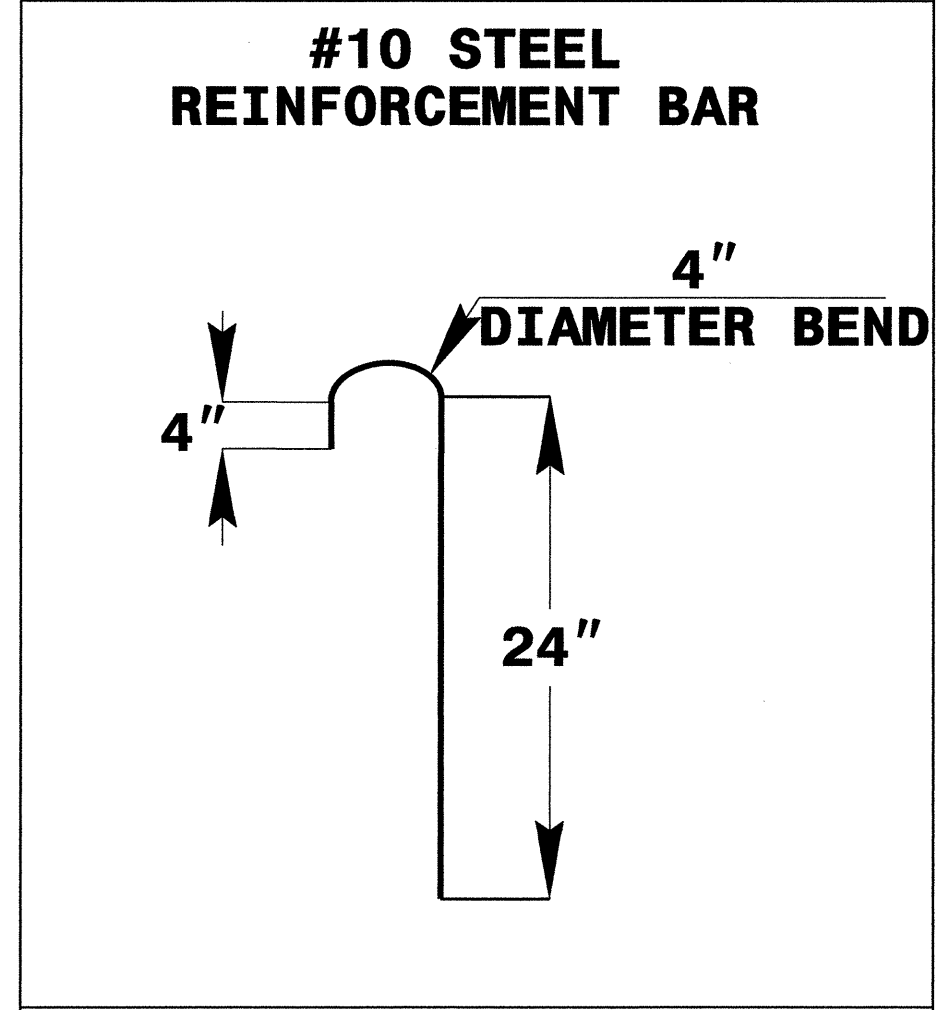
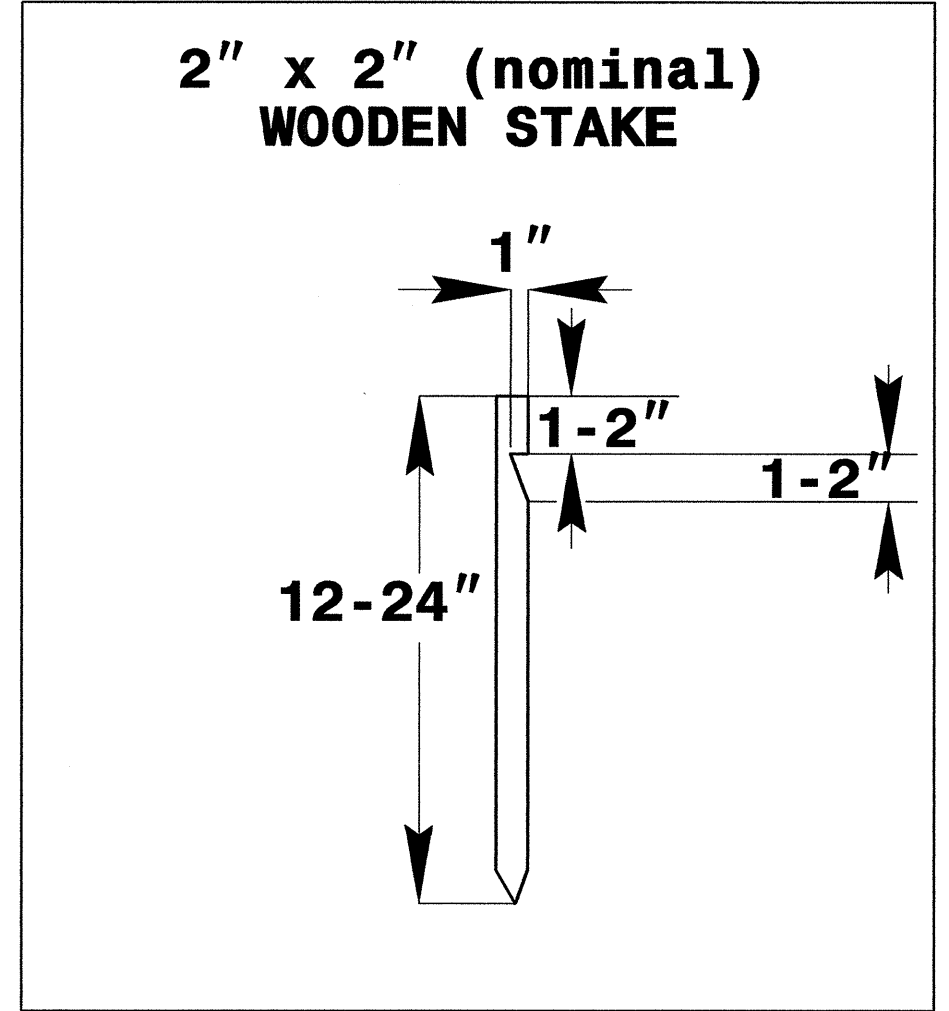
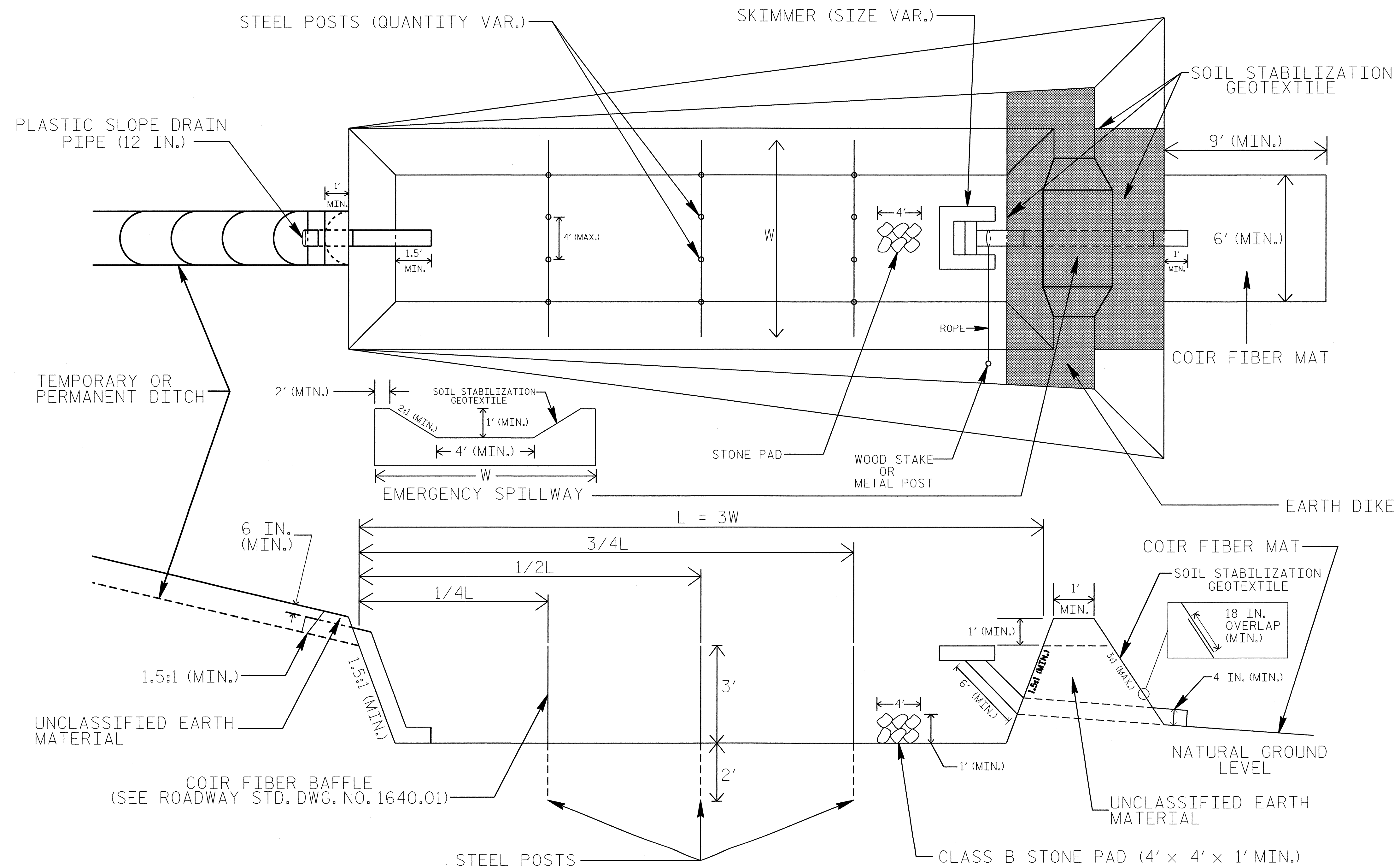
Roadway Standard Drawings

The following roadway english standards as appear in "Roadway Standard Drawings"- Roadway Design Unit - N. C. Department of Transportation - Raleigh, N. C., dated January 2012 and the latest revision thereto are applicable to this project and by reference hereby are considered a part of these plans.

1604.01 Railroad Erosion Control Detail	1632.01 Rock Inlet Sediment Trap Type A
1605.01 Temporary Silt Fence	1632.02 Rock Inlet Sediment Trap Type B
1606.01 Special Sediment Control Fence	1632.03 Rock Inlet Sediment Trap Type C
1607.01 Gravel Construction Entrance	1633.01 Temporary Rock Silt Check Type A
1622.01 Temporary Berms and Slope Drains	1633.02 Temporary Rock Silt Check Type B
1630.01 Riser Basin	1634.01 Temporary Rock Sediment Dam Type A
1630.02 Silt Basin Type B	1634.02 Temporary Rock Sediment Dam Type B
1630.03 Temporary Silt Ditch	1635.01 Rock Pipe Inlet Sediment Trap Type A
1630.04 Stilling Basin	1635.02 Rock Pipe Inlet Sediment Trap Type B
1630.05 Temporary Diversion	1640.01 Coir Fiber Baffle
1630.06 Special Stilling Basin	1645.01 Temporary Stream Crossing
1631.01 Matting Installation	

PROJECT REFERENCE NO. B-4118	SHEET NO. EC-2
RW SHEET NO.	
ROADWAY DESIGN ENGINEER	HYDRAULICS ENGINEER

SKIMMER BASIN WITH BAFFLES DETAIL



COIR FIBER MAT ANCHOR OPTIONS

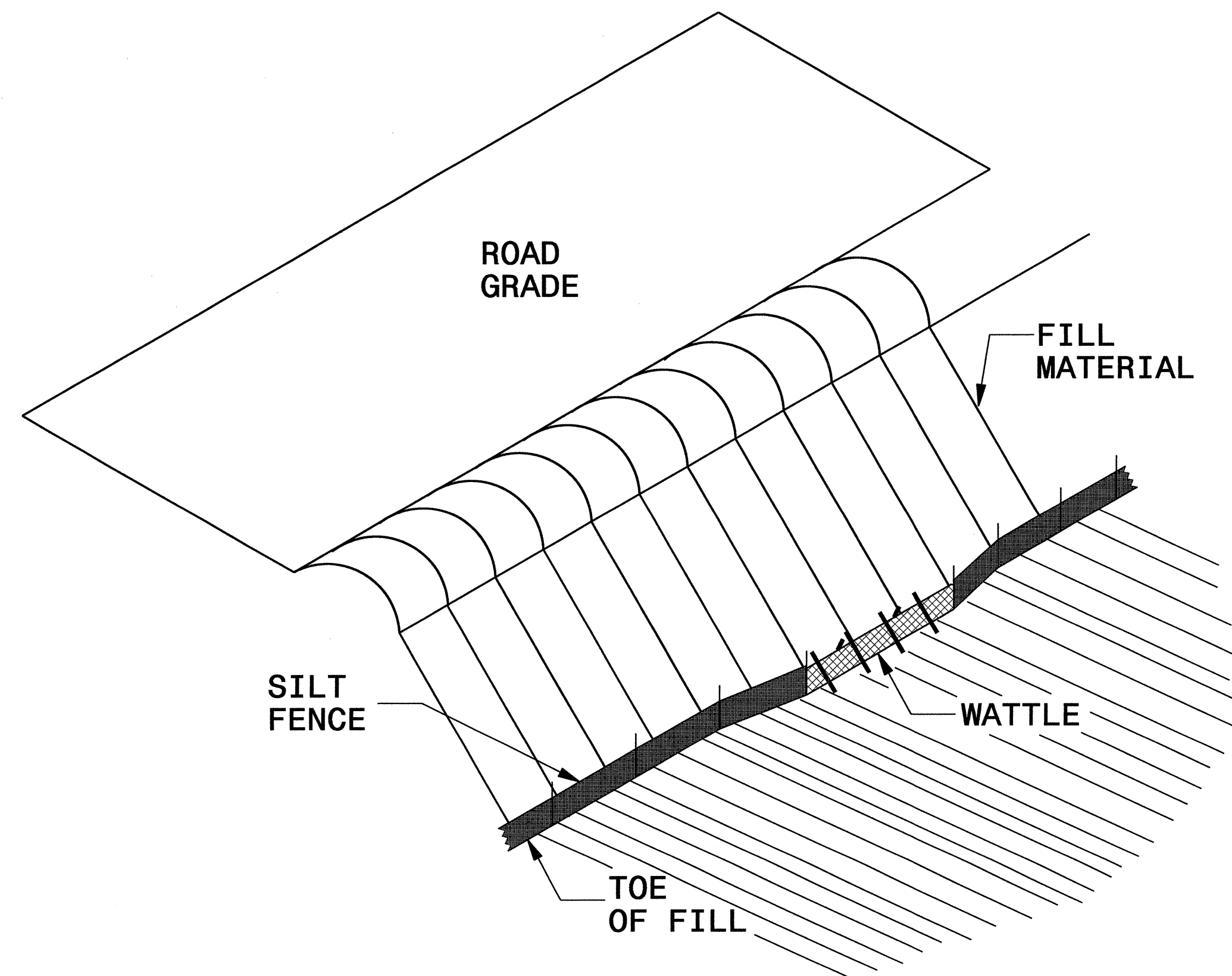
NOTES

1. SEED AND PLACE MATTING FOR EROSION CONTROL ON INTERIOR AND EXTERIOR SIDESLOPES.
2. LIMIT EARTH DIKE HEIGHT TO 5 FT.
3. FOR BASIN DEPTH OF 3 FT., THE MINIMUM BASIN WIDTH SHALL BE 9 FT.
4. DETERMINE EMERGENCY SPILLWAY LENGTH (FT.) USING $Q/0.8$, WHERE Q IS FLOW RATE (CFS) INTO BASIN.
5. PLASTIC SLOPE DRAIN PIPE AT INLET OF BASIN MAY BE REPLACED BY FILTRATION GEOTEXTILE AS DIRECTED.
6. SOIL STABILIZATION GEOTEXTILE FOR EMERGENCY SPILLWAY SHALL BE ONE CONTINUOUS PIECE OF MATERIAL OR OVERLAPPED 18 IN. (MIN.).

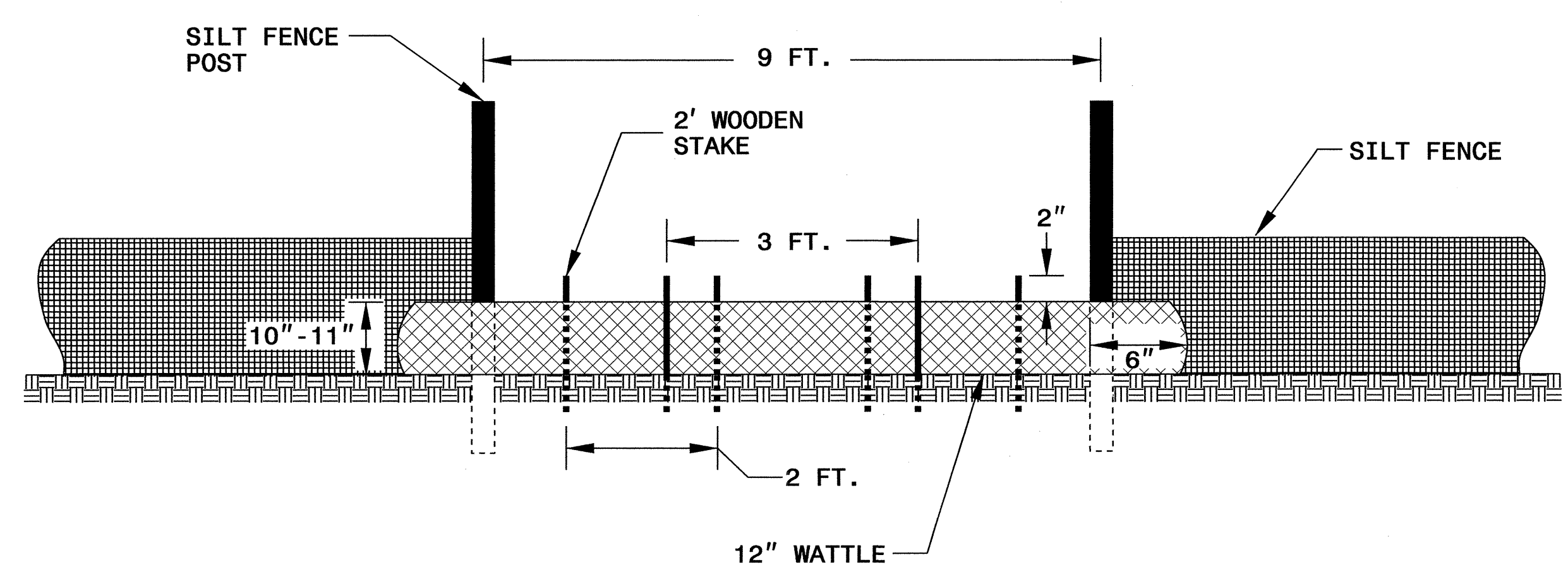
NOT TO SCALE

SILT FENCE WATTLE BREAK DETAIL

PROJECT REFERENCE NO. B-4118	SHEET NO. EC-2A
RW SHEET NO.	
ROADWAY DESIGN ENGINEER	HYDRAULICS ENGINEER



ISOMETRIC VIEW

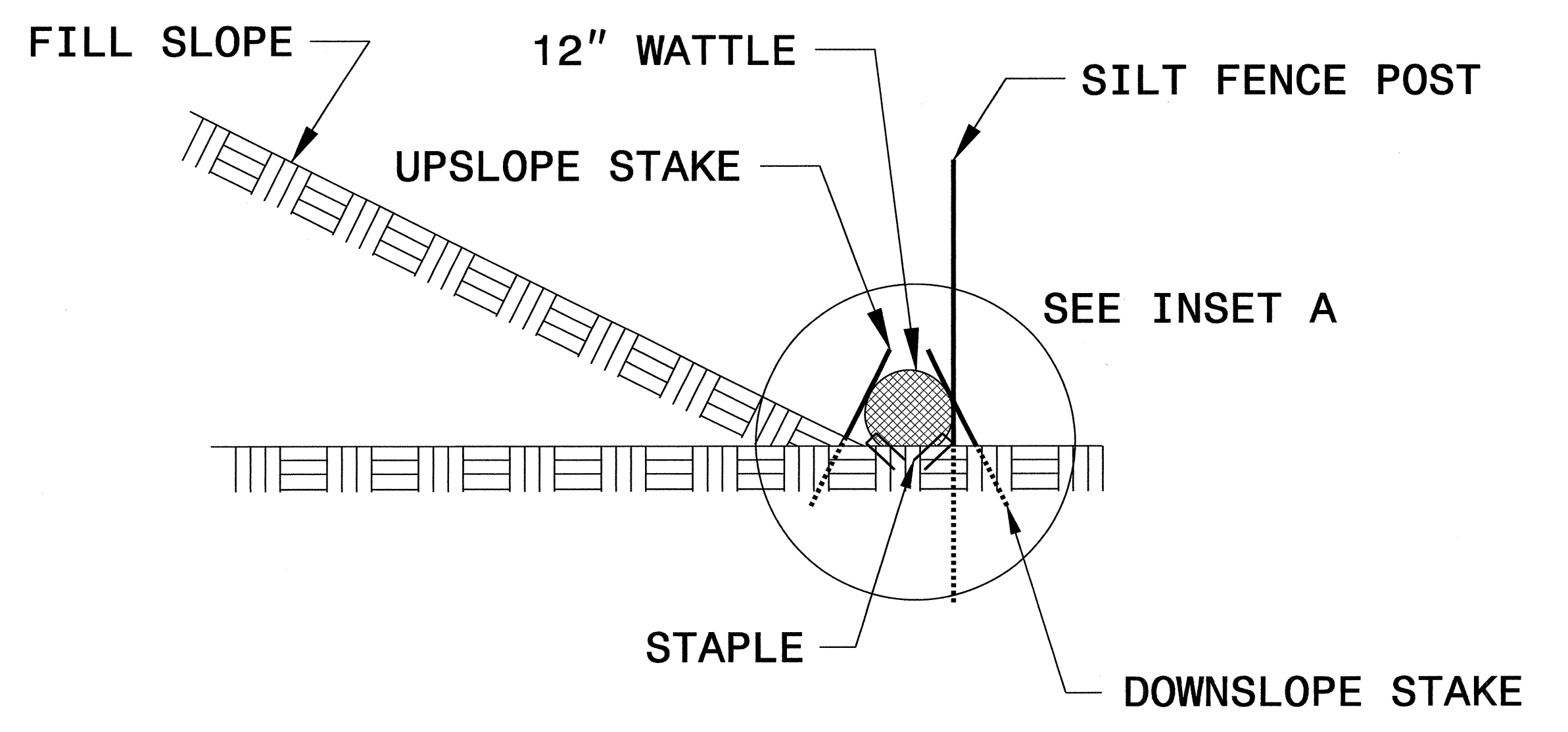
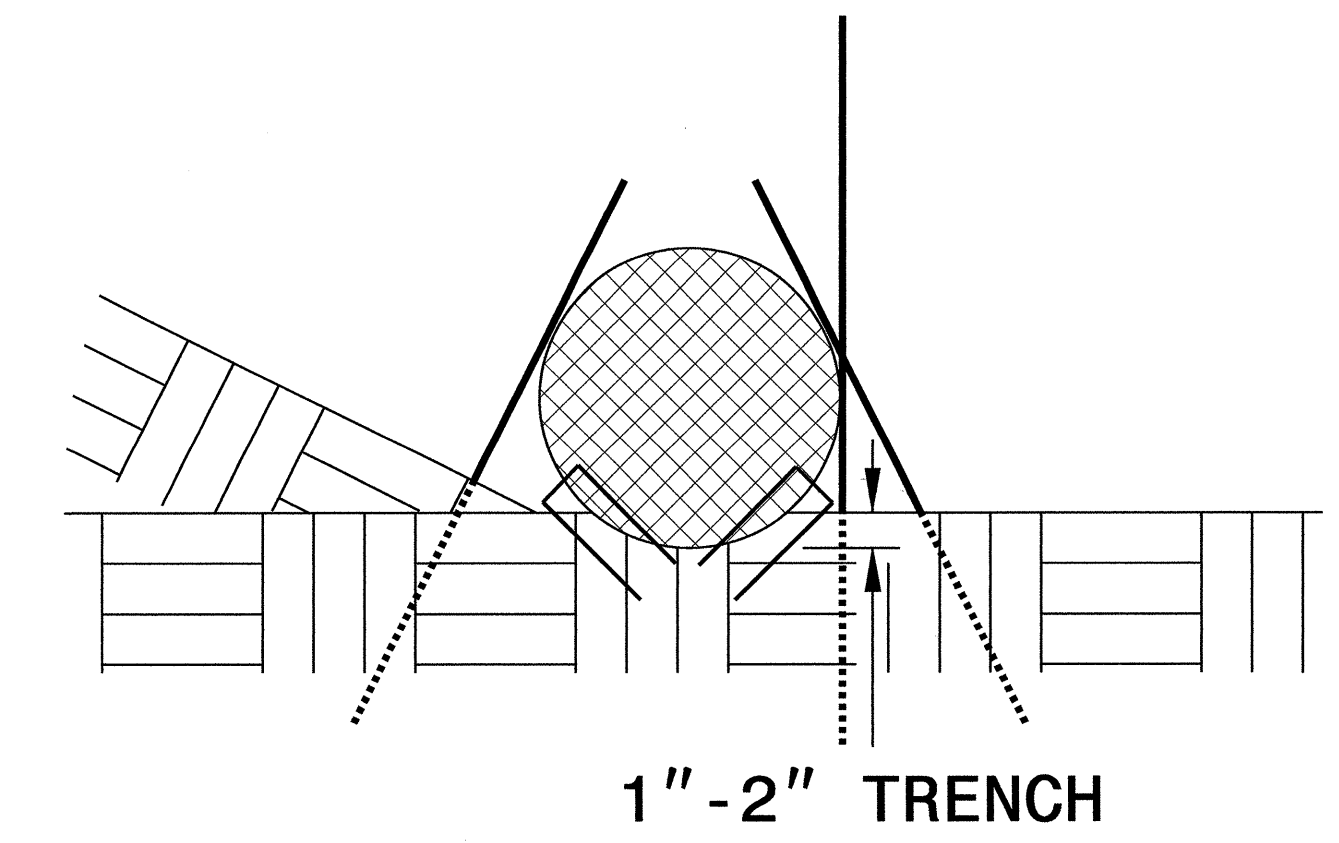


VIEW FROM SLOPE

NOTES:

- USE MINIMUM 12 IN. DIAMETER EXCELSIOR WATTLE AND LENGTH OF 10 FT.
- EXCAVATE A 1 TO 2 INCH TRENCH FOR WATTLE TO BE PLACED.
- DO NOT PLACE WATTLE ON TOE OF SLOPE.
- USE 2 FT. WOODEN STAKES WITH A 2 IN. BY 2 IN. NOMINAL CROSS SECTION.
- INSTALL A MINIMUM OF 2 UPSLOPE STAKES AND 4 DOWNSLOPE STAKES AT AN ANGLE TO WEDGE WATTLE TO GROUND.
- PROVIDE STAPLES MADE OF 0.125 IN. DIAMETER STEEL WIRE FORMED INTO A U SHAPE NOT LESS THAN 12" IN LENGTH.
- INSTALL STAPLES APPROXIMATELY EVERY 1 LINEAR FOOT ON BOTH SIDES OF WATTLE AND AT EACH END TO SECURE IT TO THE SOIL.
- WATTLE INSTALLATION CAN BE ON OUTSIDE OF THE SILT FENCE AS DIRECTED.
- INSTALL TEMPORARY SILT FENCE IN ACCORDANCE WITH SECTION 1605 OF THE STANDARD SPECIFICATIONS.

INSET A



SIDE VIEW

DIVISION OF HIGHWAYS
STATE OF NORTH CAROLINA

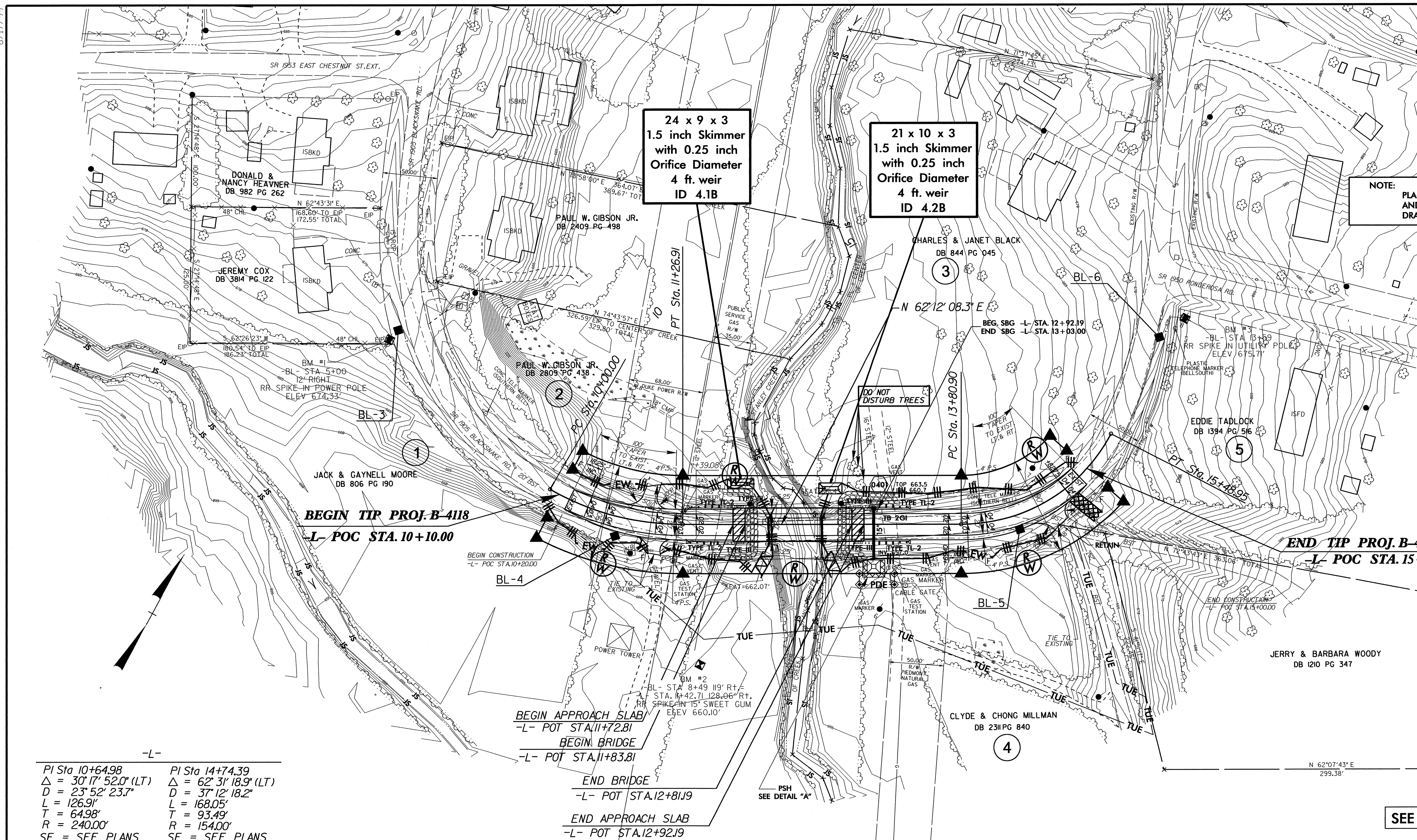
PROJECT REFERENCE NO. <i>B-4118</i>	SHEET NO. <i>EC-3</i>
ROADWAY DESIGN ENGINEER	HYDRAULICS ENGINEER

SOIL STABILIZATION TIMEFRAMES

<i>SITE DESCRIPTION</i>	<i>STABILIZATION TIME</i>	<i>TIMEFRAME EXCEPTIONS</i>
PERIMETER DIKES, SWALES, DITCHES AND SLOPES	7 DAYS	NONE
HIGH QUALITY WATER (HQW) ZONES	7 DAYS	NONE
SLOPES STEEPER THAN 3:1	7 DAYS	IF SLOPES ARE 10' OR LESS IN LENGTH AND ARE NOT STEEPER THAN 2:1, 14 DAYS ARE ALLOWED.
SLOPES 3:1 OR FLATTER	14 DAYS	7 DAYS FOR SLOPES GREATER THAN 50' IN LENGTH.
ALL OTHER AREAS WITH SLOPES FLATTER THAN 4:1	14 DAYS	NONE, EXCEPT FOR PERIMETERS AND HQW ZONES.

8/17/99

PROJECT REFERENCE NO. B-4118	SHEET NO. EC-4/CONST.4
ROADWAY DESIGN ENGINEER	HYDRAULICS ENGINEER



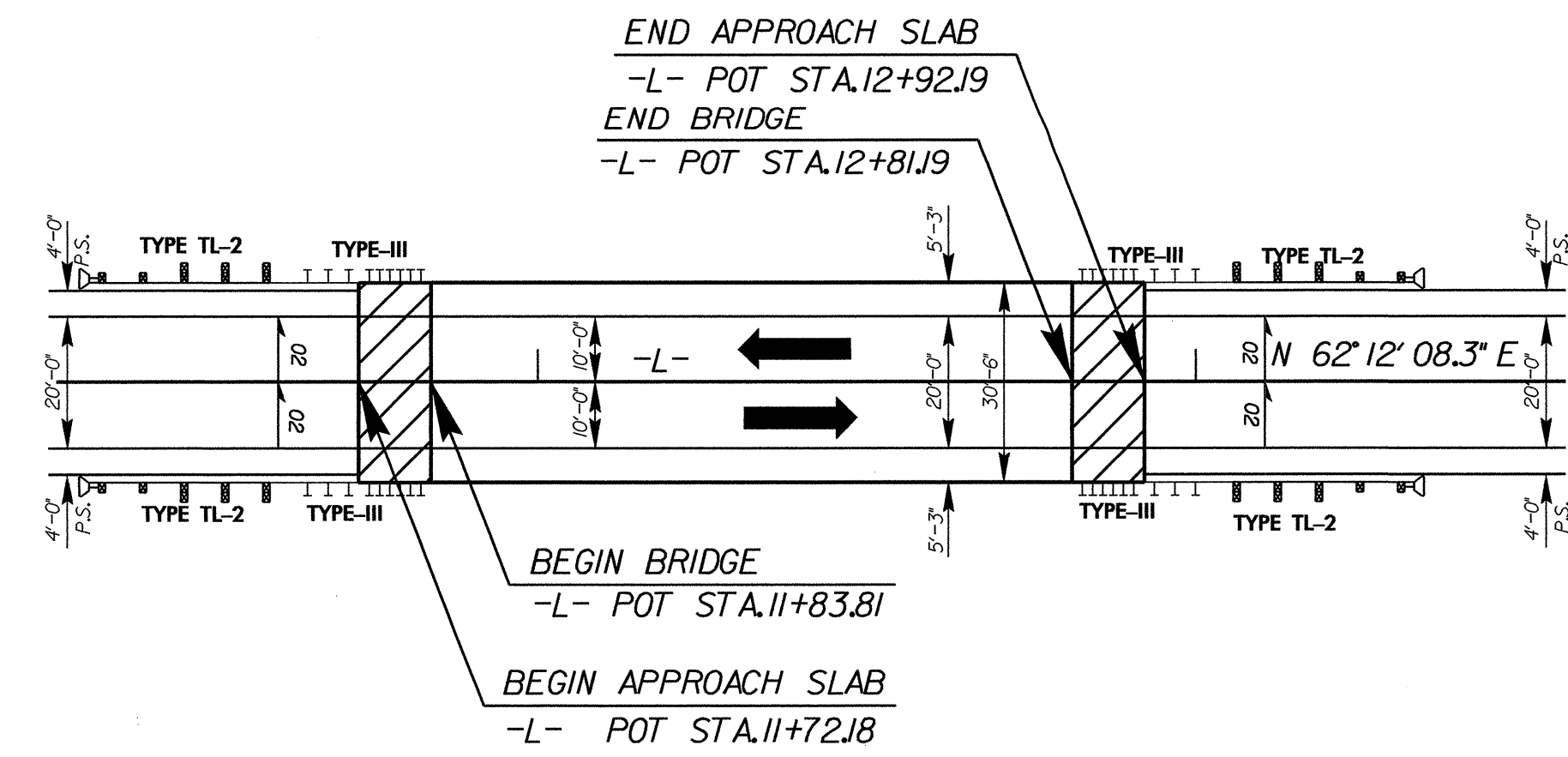
NOTE: PLACE TEMPORARY ROCK SEDIMENT DAMS TYPE - B AND TEMPORARY ROCK SILT CHECKS TYPE - A AT DRAINAGE OUTLETS.

CLEARING AND GRUBBING EROSION CONTROL FOR CONSTRUCTION SHEET 4

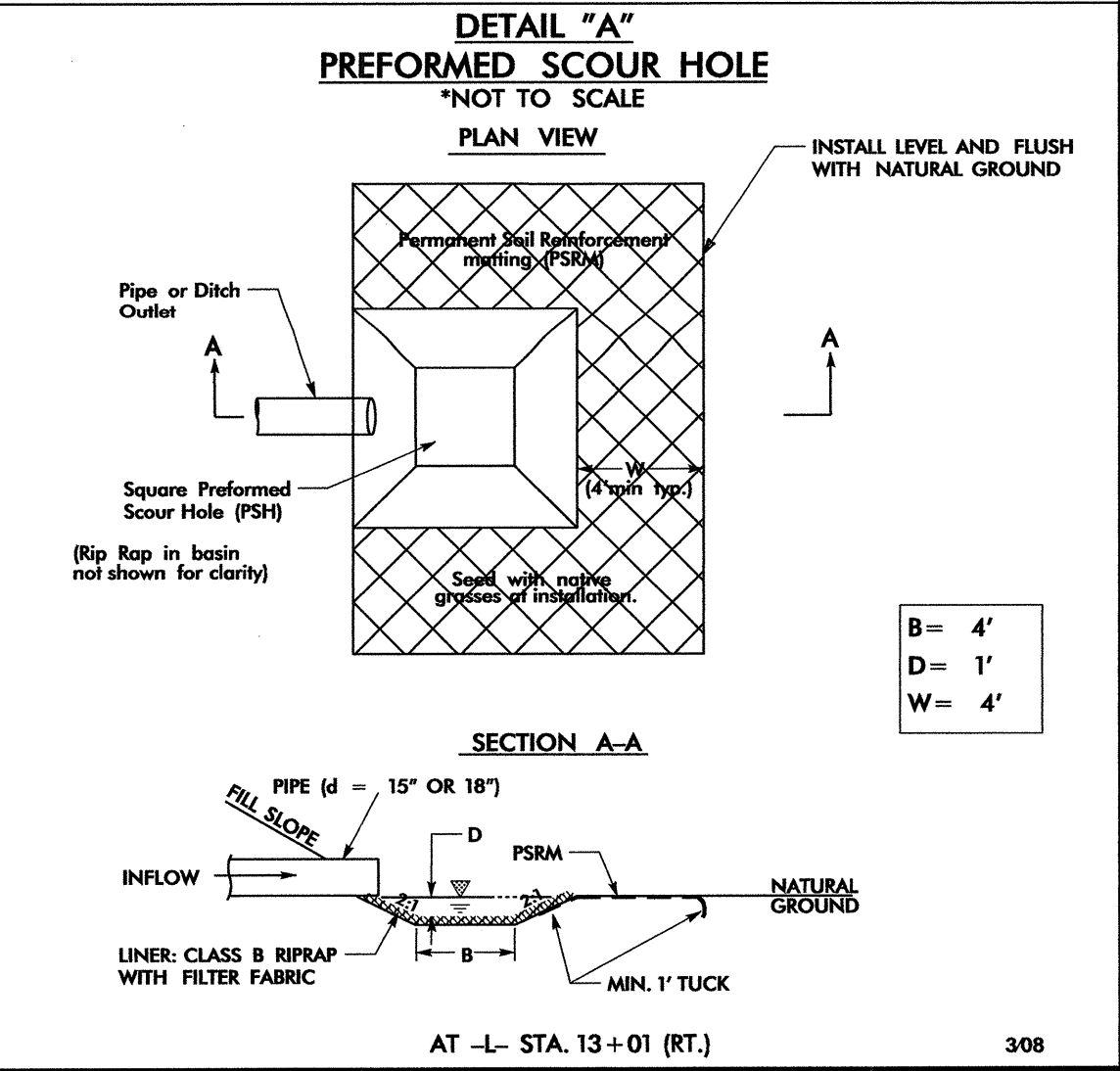
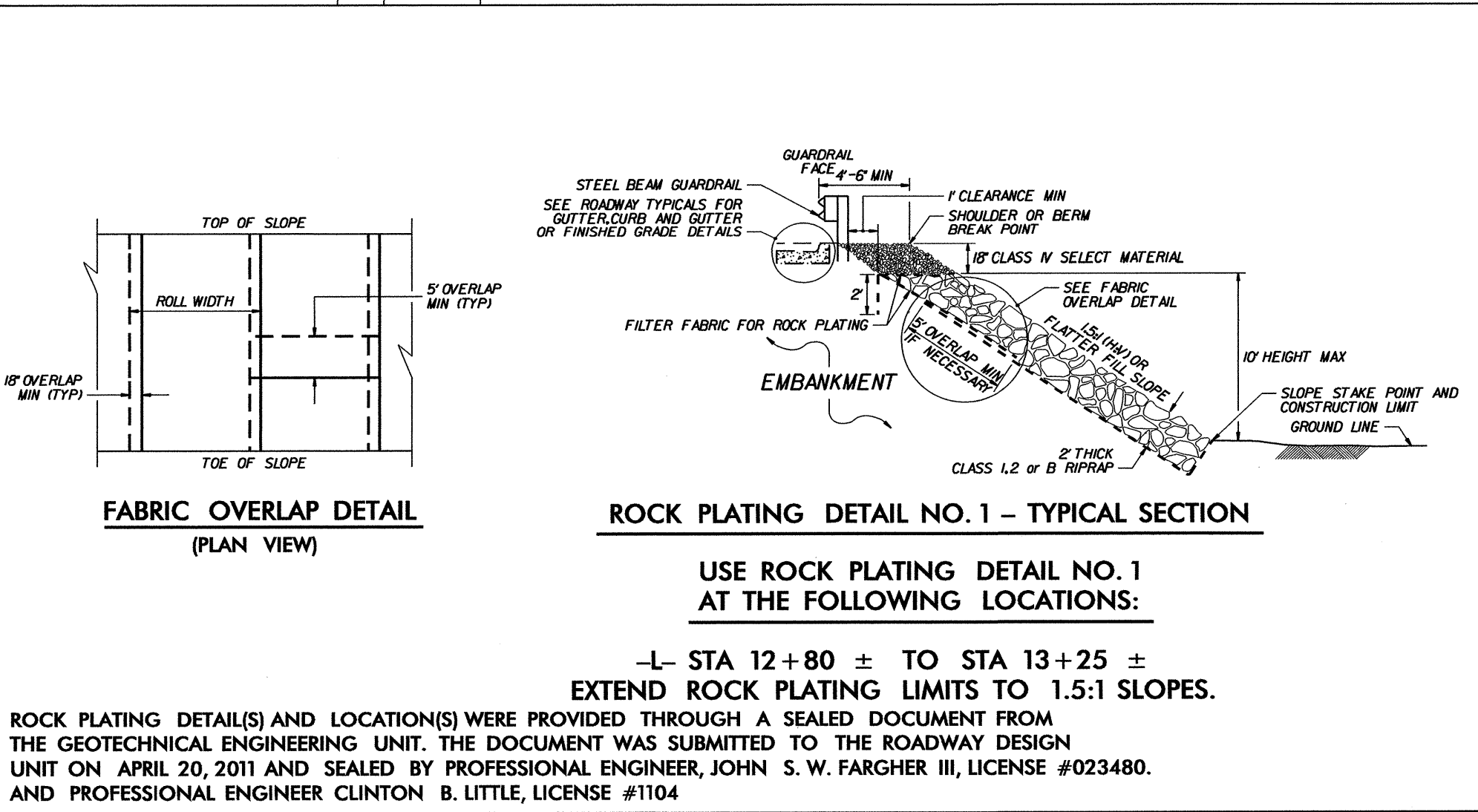
NOTE: UTILIZE SPECIAL STILLING BASIN WHERE APPLICABLE.

-L-	
PI Sta 10+64.98	PI Sta 14+74.39
$\Delta = 30' 17" 52.0" (LT)$	$\Delta = 62' 31" 18.9" (LT)$
$D = 23' 52" 23.7"$	$D = 37' 12" 18.2"$
$L = 126.9'$	$L = 168.05'$
$T = 64.98'$	$T = 93.49'$
$R = 240.00'$	$R = 154.00'$
SE = SEE PLANS	SE = SEE PLANS
RO = SEE PLANS	RO = SEE PLANS

SKETCH SHOWING BRIDGE/PAVEMENT RELATIONSHIP



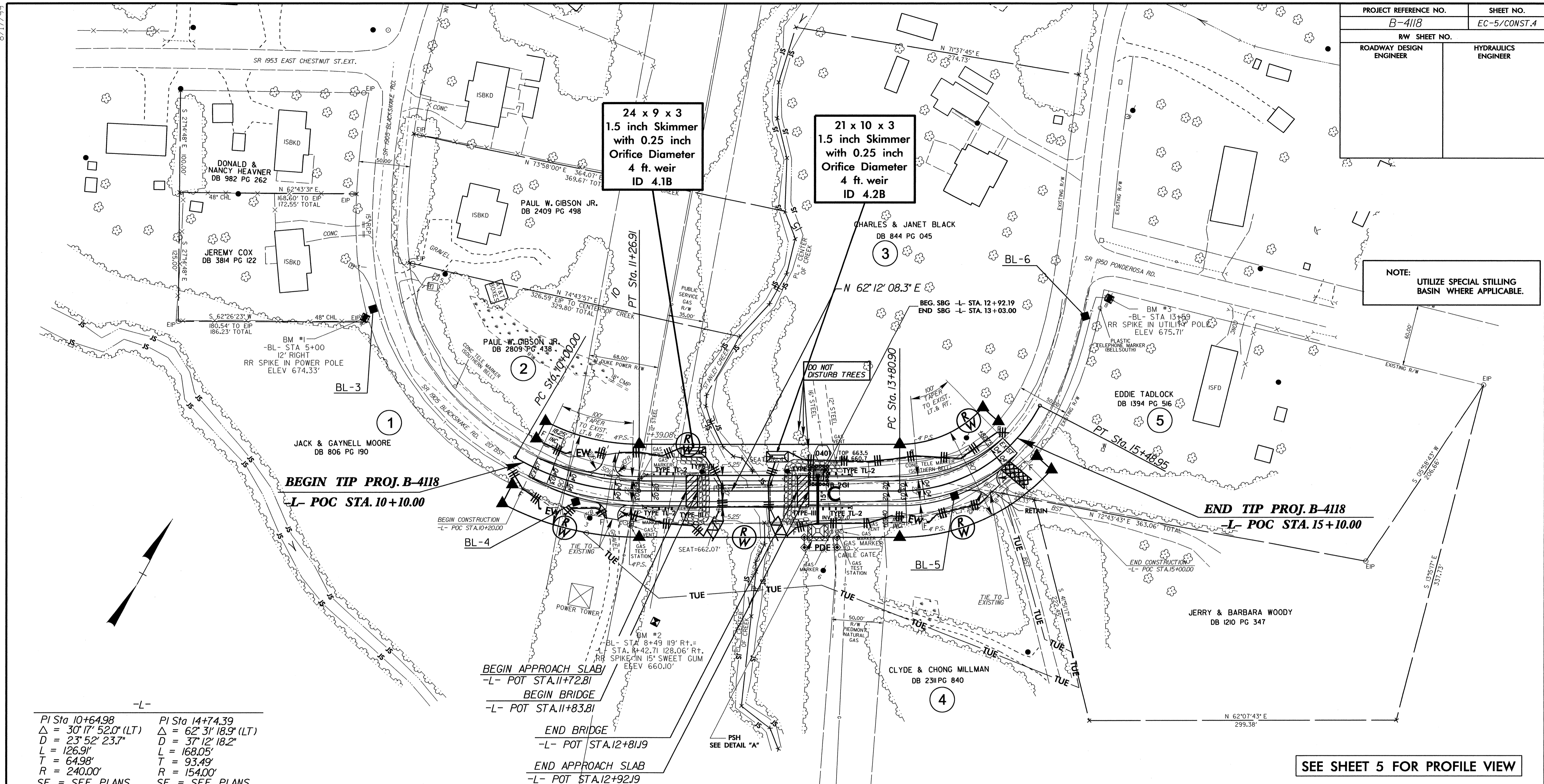
SEE SHEET 5 FOR PROFILE VIEW



15: MAR 2012 11:48
 I:\Projects\B-4118\Design\B-4118_EC.dsn.dgn
 CLINTON B. LITTLE

PROJECT REFERENCE NO. B-4118	SHEET NO. EC-5/CONST. A
R/W SHEET NO.	
ROADWAY DESIGN ENGINEER	HYDRAULICS ENGINEER

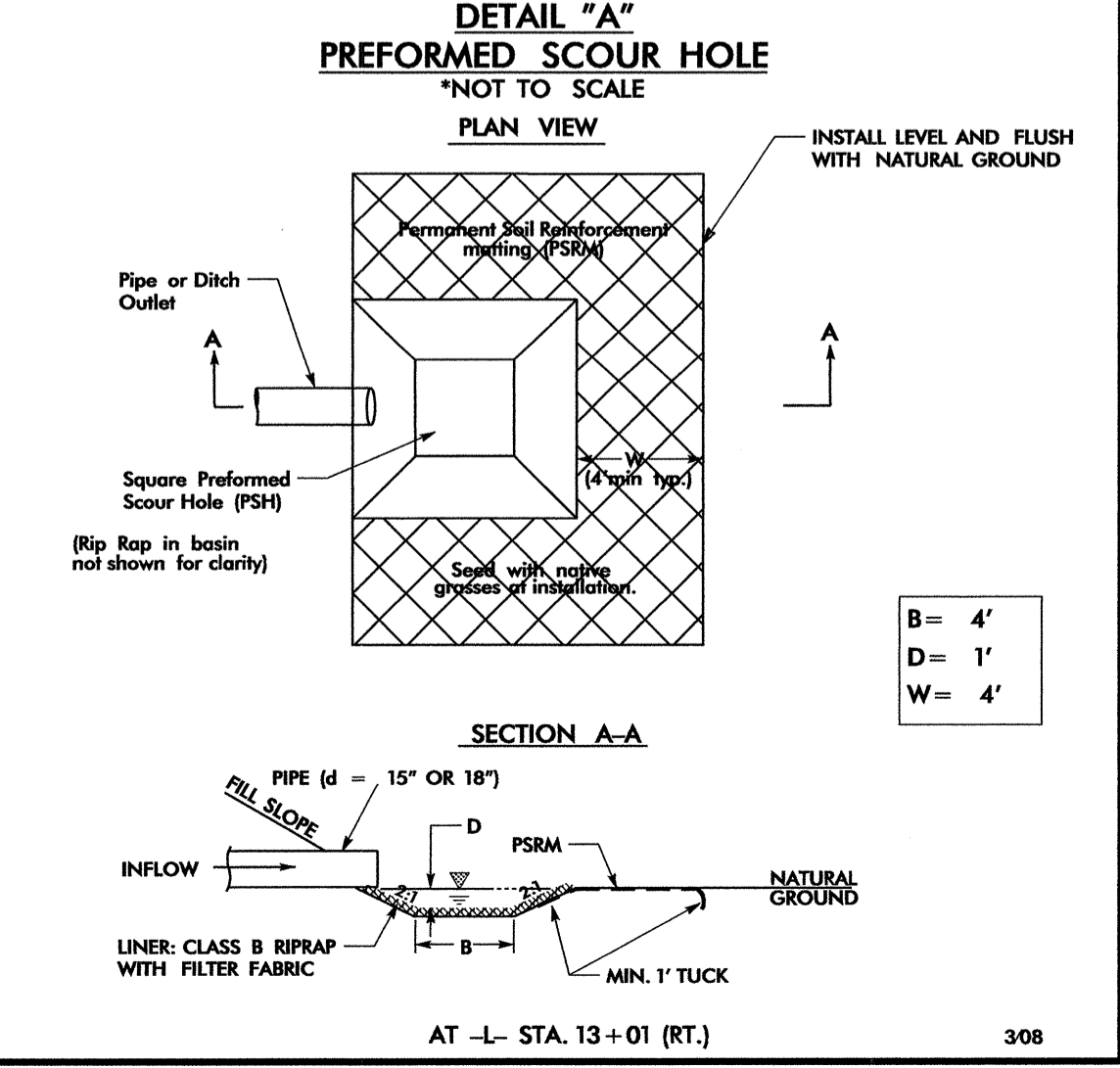
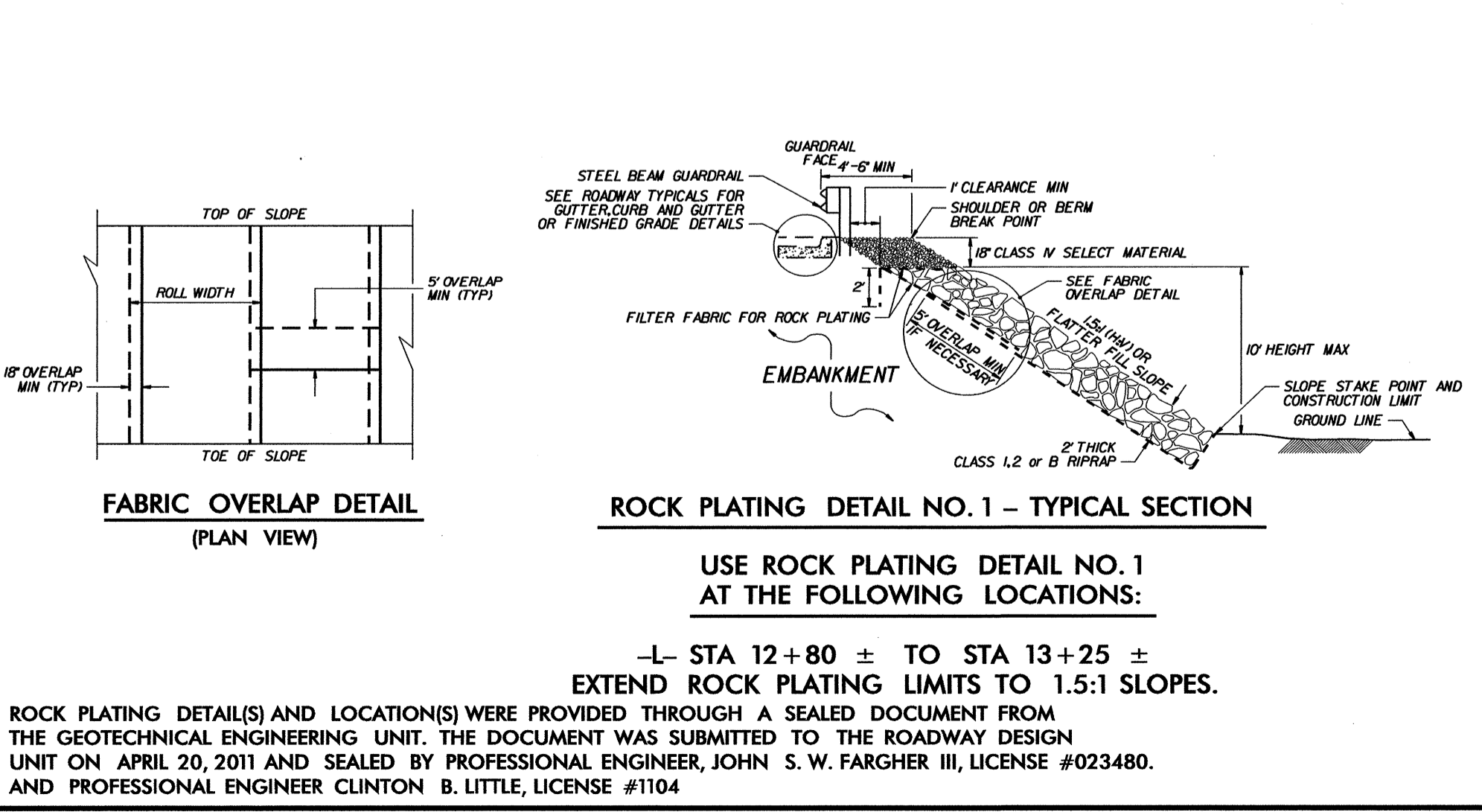
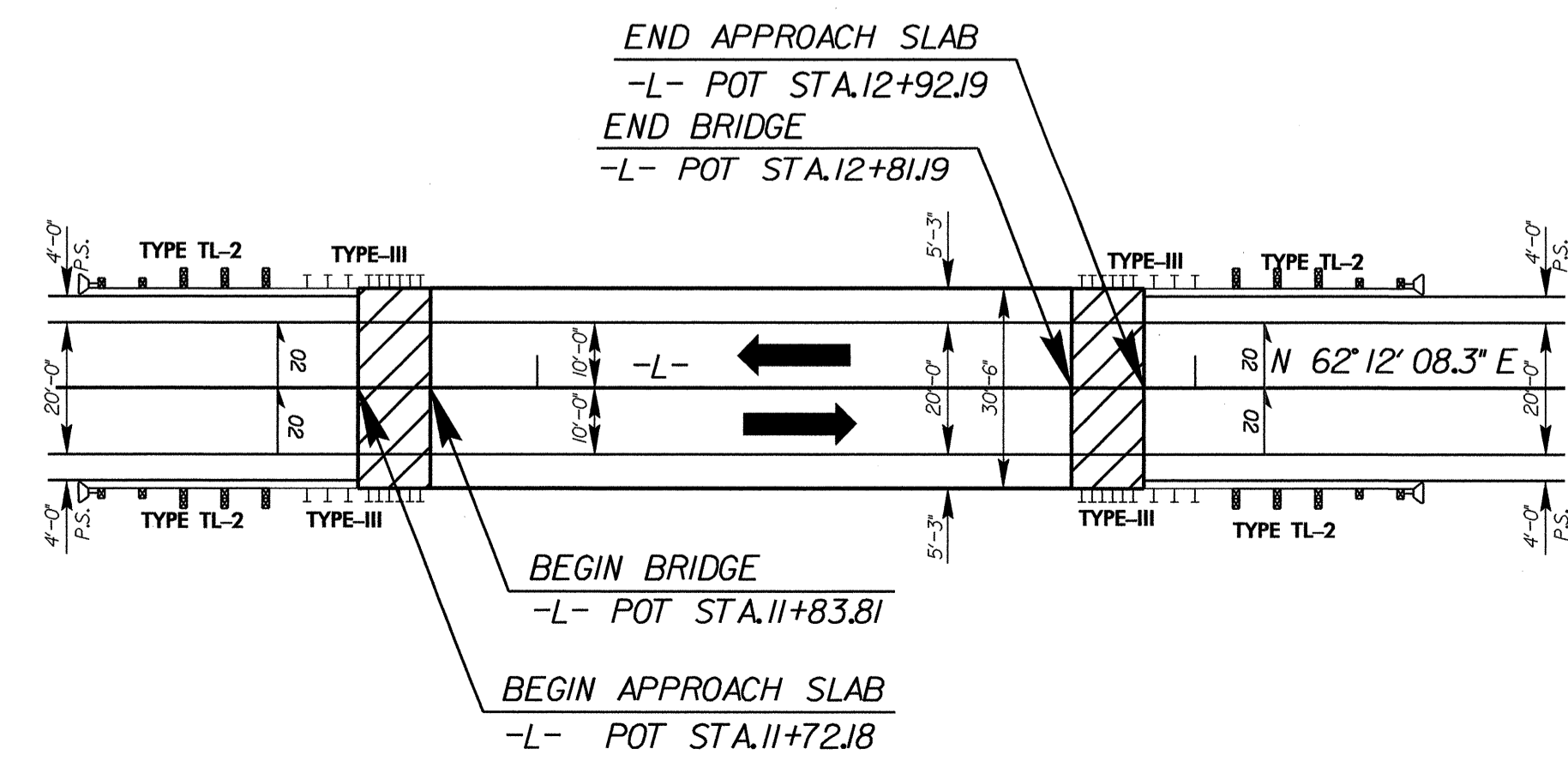
NOTE: UTILIZE SPECIAL STILLING BASIN WHERE APPLICABLE.



PI Sta 10+64.98	PI Sta 14+74.39
$\Delta = 30^{\circ} 17' 52.0''$ (LT)	$\Delta = 62^{\circ} 31' 18.9''$ (LT)
$D = 23^{\circ} 52' 23.7''$	$D = 37^{\circ} 12' 18.2''$
$L = 126.91'$	$L = 168.05'$
$T = 64.98'$	$T = 93.49'$
$R = 240.00'$	$R = 154.00'$
SE = SEE PLANS	SE = SEE PLANS
RO = SEE PLANS	RO = SEE PLANS

SEE SHEET 5 FOR PROFILE VIEW

SKETCH SHOWING BRIDGE/PAVEMENT RELATIONSHIP



8/17/99
E:\MAR-2012\1148 - B-4118 - EC.dsn.dgn
11:58:53 AM
CLINTON B. LITTLE