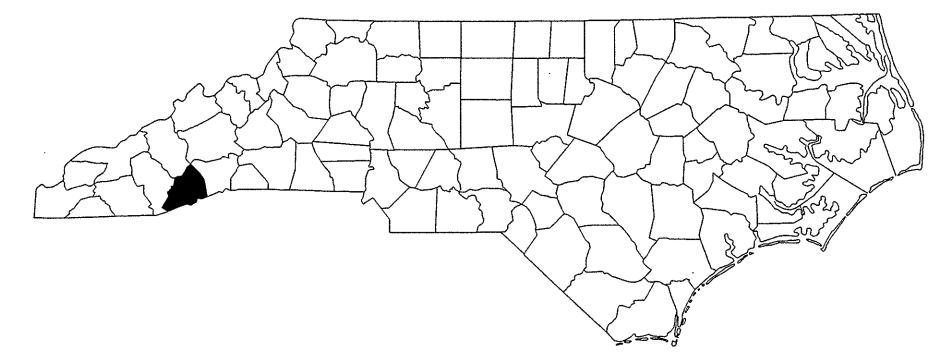
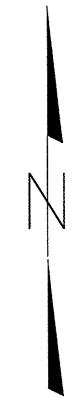
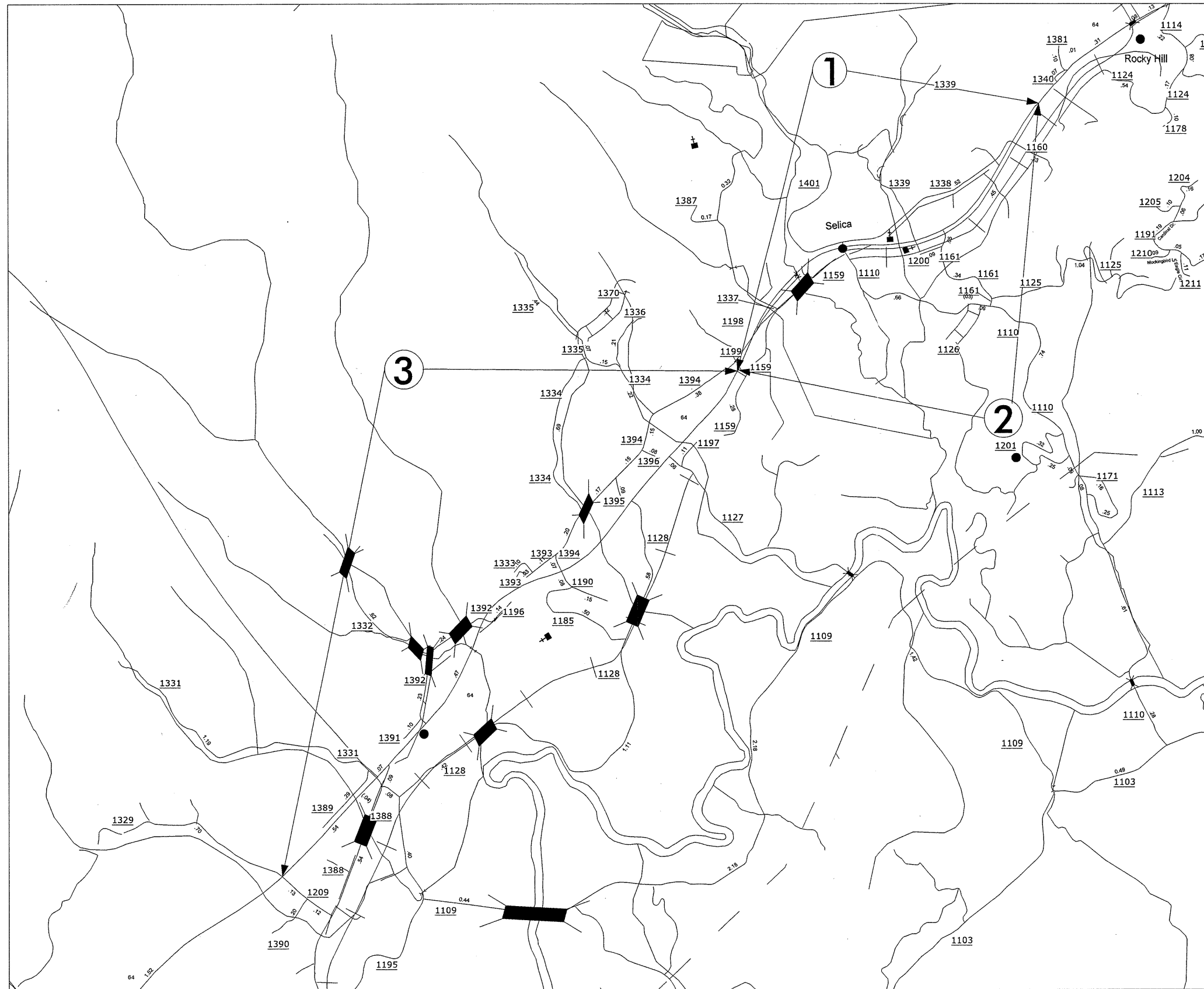


# TRANSYLVANIA COUNTY

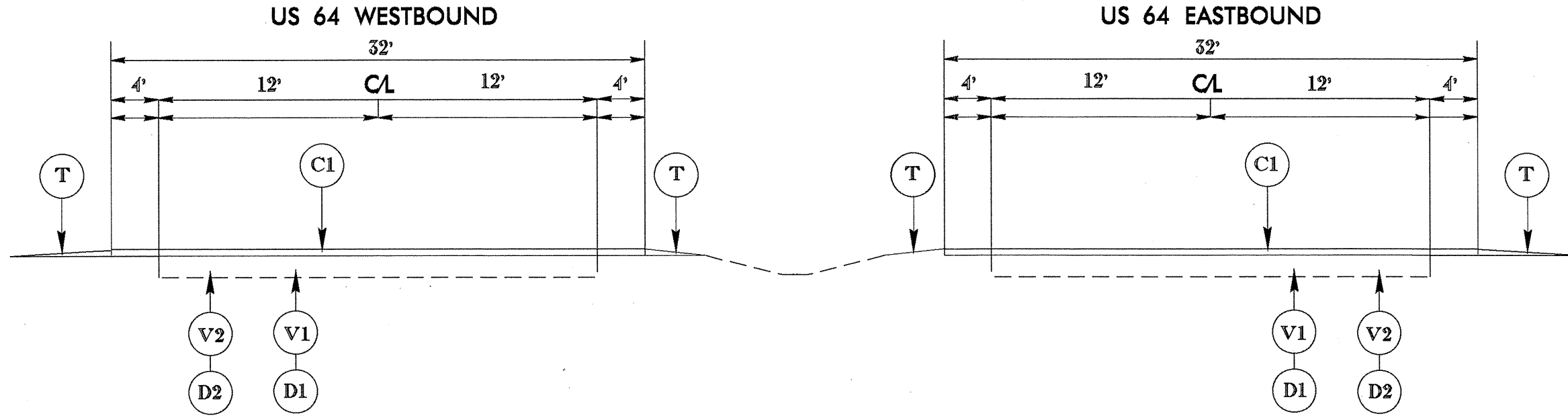
PROJECT REFERENCE NO.		SHEET NO.
14CR.10881.6		1
STATE PROJECT	F.A. PROJECT NO.	DESCRIPTION
14CR.10881.6		



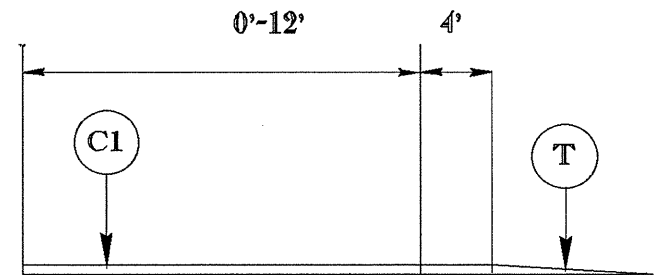
050197

PROJECT REFERENCE NO.		SHEET NO.
14CR.10881.6		2
STATE PROJECT	F.A. PROJECT NO.	DESCRIPTION
14CR.10881.6		

# TYPICAL 1



## TURN LANE/CROSSOVER



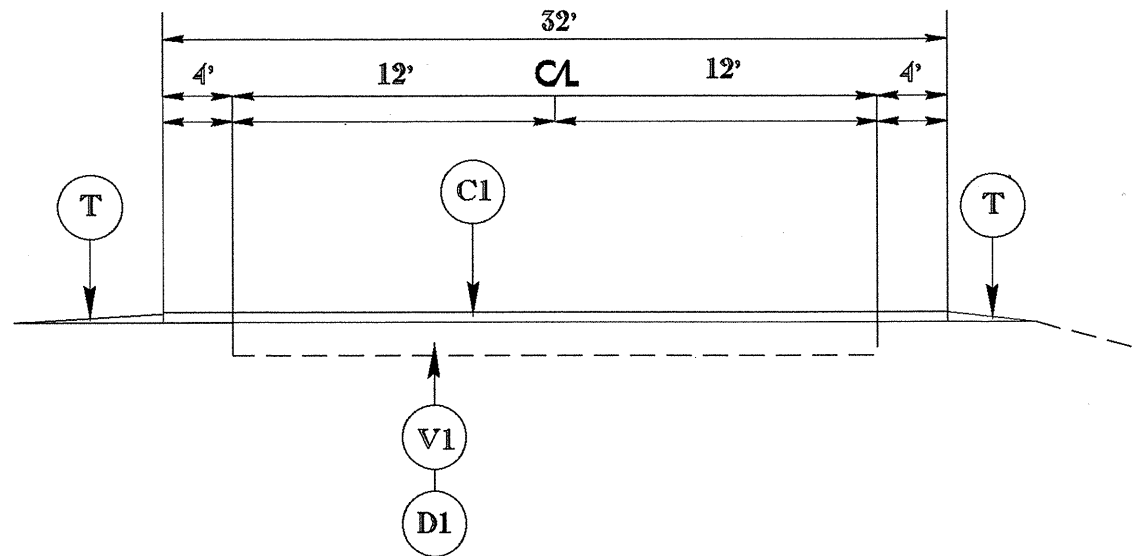
### SURFACING SCHEDULE

ITEM NO	DESCRIPTION
C1	ASPHALT CONCRETE SURFACE COURSE, TYPE S9.5B, AT AN AVERAGE RATE OF 168 LBS. PER SQ. YD (1 1/2").
D1	ASPHALT CONCRETE INTERMEDIATE COURSE, TYPE I19.0B, AT AN AVERAGE RATE OF 285 LBS. PER SQ. YD (2 1/2").
D2	ASPHALT CONCRETE INTERMEDIATE COURSE, TYPE I19.0B, AT AN AVERAGE RATE OF 342 LBS. PER SQ. YD (6"), PLACED IN 2 LIFTS
V1	MILLING ASPHALT PAVEMENT 2 1/2" IN DEPTH
V2	MILLING ASPHALT PAVEMENT 6" IN DEPTH AS DIRECTED BY PROJECT ENGINEER
T	SHOULDER RECONSTRUCTION WITH ABC (M) SEE SPECIAL PROVISIONS.
U	EXISTING PAVEMENT

050127

PROJECT REFERENCE NO.		SHEET NO.
14CR.10881.6		3
STATE PROJECT	F.A. PROJECT NO.	DESCRIPTION
14CR.10881.6		

# TYPICAL 2



## SURFACING SCHEDULE

ITEM NO	DESCRIPTION
C1	ASPHALT CONCRETE SURFACE COURSE, TYPE S9.5B, AT AN AVERAGE RATE OF 168 LBS. PER SQ. YD (1 1/2").
D1	ASPHALT CONCRETE INTERMEDIATE COURSE, TYPE I19.0B, AT AN AVERAGE RATE OF 285 LBS. PER SQ. YD (2 1/2").
D2	ASPHALT CONCRETE INTERMEDIATE COURSE, TYPE I19.0B, AT AN AVERAGE RATE OF 342 LBS. PER SQ. YD (6"), PLACED IN 2 LIFTS
V1	MILLING ASPHALT PAVEMENT 2 1/2" IN DEPTH
V2	MILLING ASPHALT PAVEMENT 6" IN DEPTH AS DIRECTED BY PROJECT ENGINEER
T	SHOULDER RECONSTRUCTION WITH ABC (M) SEE SPECIAL PROVISIONS.
U	EXISTING PAVEMENT

PROJECT NO.	SHEET NO.	TOTAL NO.
14CR.10881.6	4	

### SUMMARY OF QUANTITIES

PROJECT NO	COUNTY	MAP NO	ROUTE	DESCRIPTION	TYP NO	FINAL SURFACE TESTING REQUIRED	AGGREGATE SHOULDER BORROW ALLOWED	LENGTH MI	WIDTH FT	SHOULDER RECONSTRUCTION SMI	6" MILLING SY	2-1/2" MILLING SY	INTERMEDIATE COURSE, I19.0B TONS	SURFACE COURSE, S9.5B TONS	ASPHALT BINDER FOR PLANT MIX TONS
14CR.10881.6	Transylvania	1	US 64	FROM PAVEMENT CHANGE .01 MILES WEST OF SR-1381 TO SR-1394	1	YES	YES	1.77	32	3.54	300	25,000	3,700	3,300	376
TOTAL FOR MAP NO. 1								1.77		3.54	300	25,000	3,700	3,300	376
14CR.10881.6	Transylvania	2	US 64	FROM PAVEMENT CHANGE .01 MILES WEST OF SR-1381 TO SR-1394	1	YES	YES	1.77	32	3.54	300	25,000	3,700	3,300	376
TOTAL FOR MAP NO. 2								1.77		3.54	300	25,000	3,700	3,300	376
14CR.10881.6	Transylvania	3	US 64	FROM SR-1394 TO SR-1329	2	YES	YES	2.71	32	5.42		38,150	5,500	4,762	550
TOTAL FOR MAP NO. 3								2.71		5.42		38,150	5,500	4,762	550
TOTAL FOR PROJ NO. 14CR.10881.6								6.25		12.50	600	88,150	12,900	11,362	1,302
GRAND TOTAL								6.25		12.50	600	88,150	12,900	11,362	1,302

### THERMOPLASTIC AND PAINT QUANTITIES

PROJECT NO	COUNTY	MAP NO	ROUTE	DESCRIPTION	LENGTH	WIDTH	4400000000-E	4405000000-E	4415000000	4420000000-N	4430000000	4480000000	4516000000-N	4685000000-E	4686000000-E	4697000000	4710000000	4725000000-E			4810000000-E		4905000000-N		
							STATIONARY WORK ZONE SIGN	PORTABLE WORK ZONE SIGN	FLASHING ARROW BOARD	CHANGEABLE MESSAGE SIGN	DRUMS	TMA	SKINNY DRUMS	4" X 90 M WHITE THERMO	4" X 90 M YELLOW THERMO	4" X 120 M WHITE THERMO	4" X 120 M YELLOW THERMO	8" X 120 M YELLOW THERMO	24" X 120 M WHITE THERMO	THERMO LT ARROW 90 M	THERMO STR ARROW 90 M	THERMO RT ARROW 90 M	4" YELLOW PAINT	4" WHITE PAINT	SNOW PLOWABLE MARKERS
NO		NO					SF	SF	EA	EA	EA	EA	EA	LF	LF	LF	LF	LF	EA	EA	EA	LF	LF	EA	
14CR.10881.6	Transylvania	1	US 64	FROM PAVEMENT CHANGE .01 MILES WEST OF SR-1381 TO SR-1394	1.77	32	144	96	2	2	60	2	180	9,700	9,346	2,336		1,200	176	15	3	9	9,358	13,130	225
TOTAL FOR MAP NO. 1					1.77		144	96	2	2	60	2	180	9,700	9,346	2,336		1,200	176	15	3	9	9,358	13,130	225
14CR.10881.6	Transylvania	2	US 64	FROM PAVEMENT CHANGE .01 MILES WEST OF SR-1381 TO SR-1394	1.77	32								9,700	9,346	3,450			150	14		5	9,358	12,810	225
TOTAL FOR MAP NO. 2					1.77									9,700	9,346	3,450			150	14		5	9,358	12,810	225
14CR.10881.6	Transylvania	3	US 64	FROM SR-1394 TO SR-1329	2.71	32								29,160			28,617		150	19		6	28,618		180
TOTAL FOR MAP NO. 3					2.71									29,160			28,617		150	19		6	28,618		180
TOTAL FOR PROJ NO. 14CR.10881.6					6.25		144	96	2	2	60	2	180	48,560	18,692	5,786	28,617	1,200	476	48	3	20	47,334	25,940	630
GRAND TOTAL					6.25		144	96	2	2	60	2	180	67,252	34,403				71				73,274		