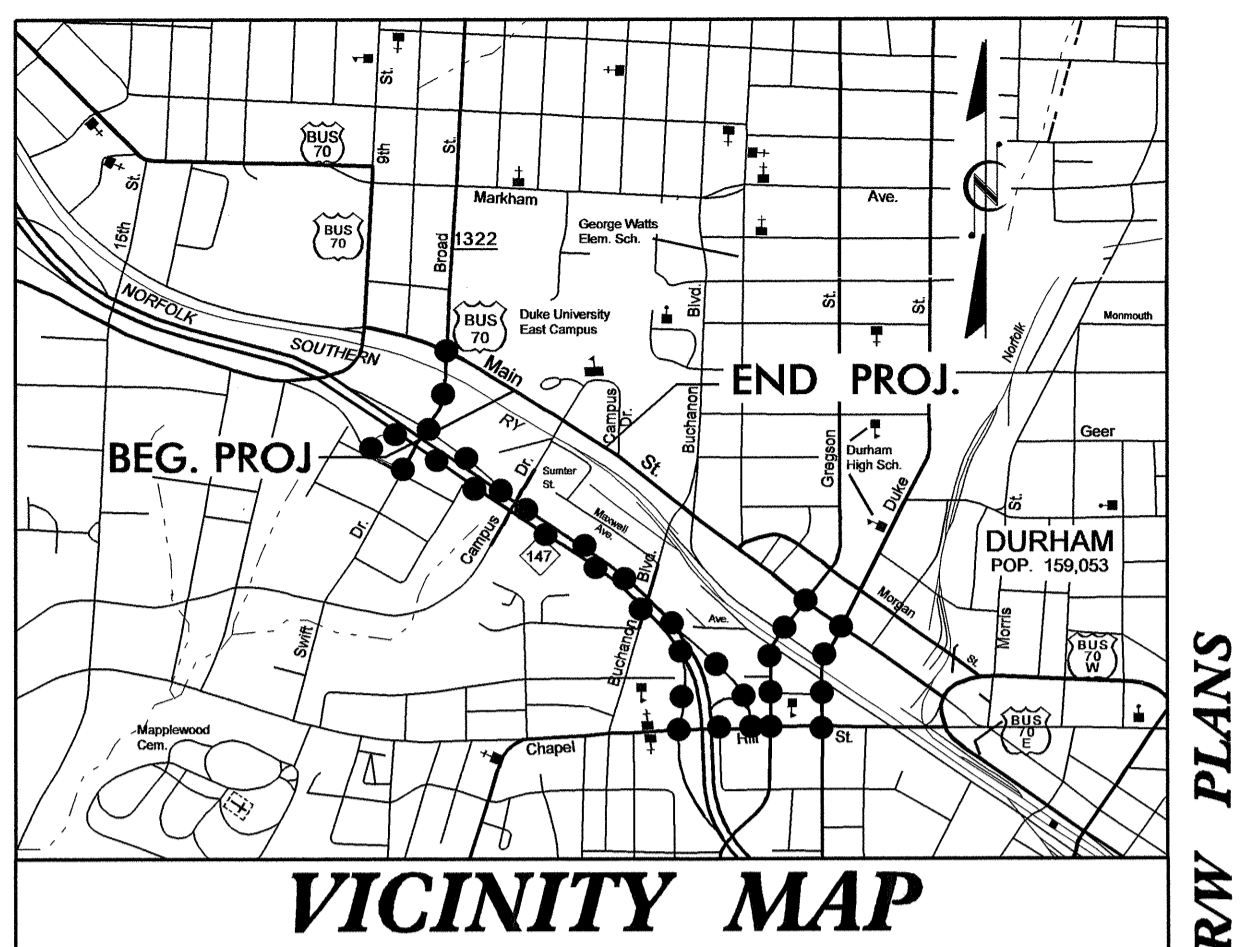


STATE OF NORTH CAROLINA
DIVISION OF HIGHWAYS

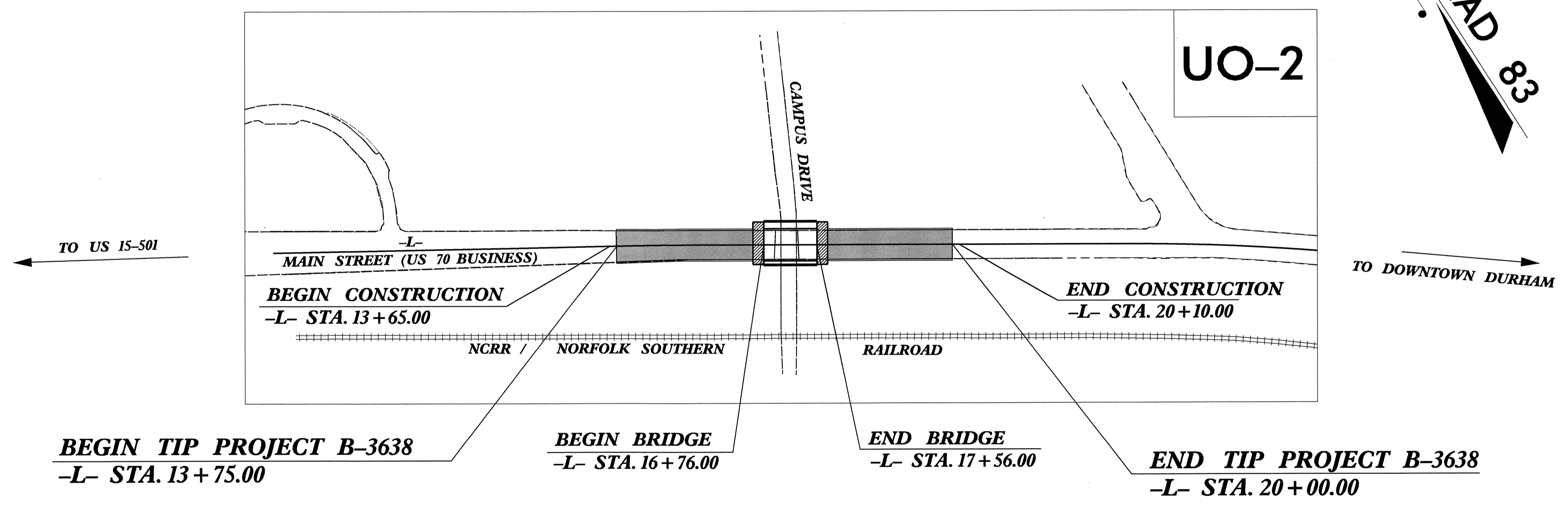
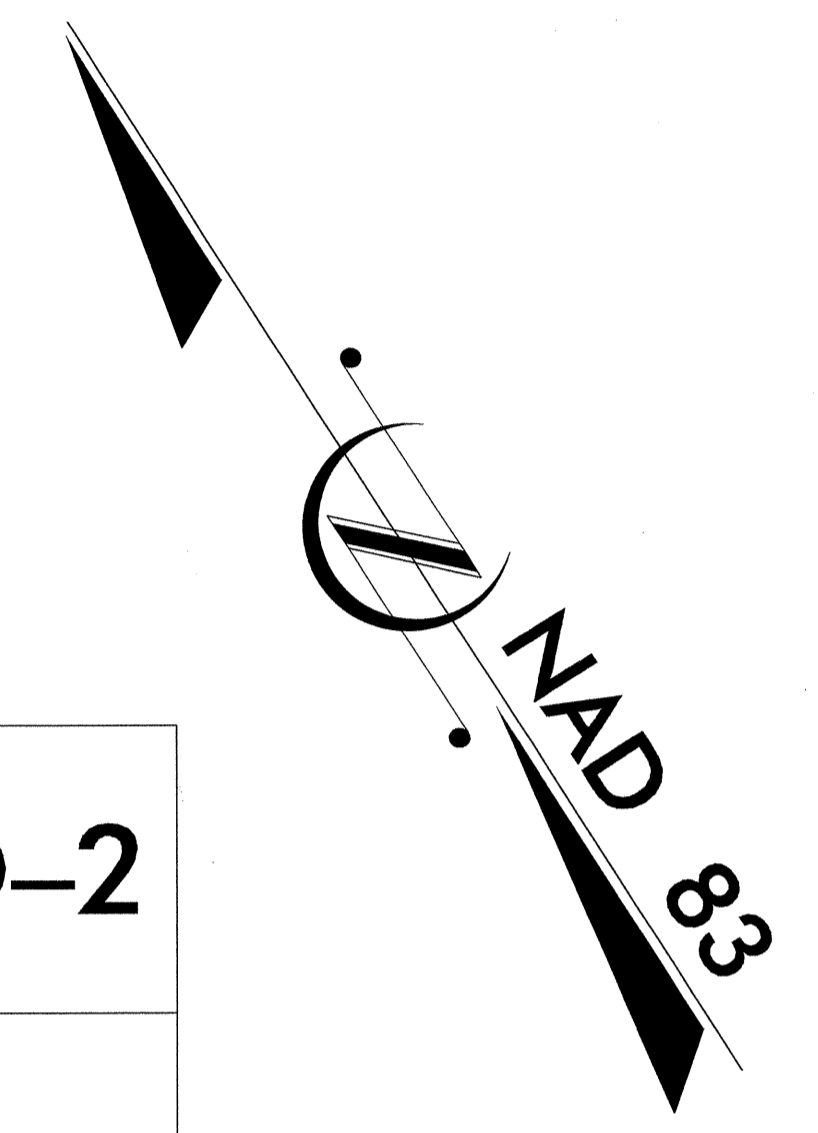
**UTILITIES BY OTHERS PLANS
DURHAM COUNTY**

**LOCATION: BRIDGE No. 316 OVER CAMPUS DRIVE
ON US 70 BUSINESS**

TYPE OF WORK: UTILITY CONSTRUCTION



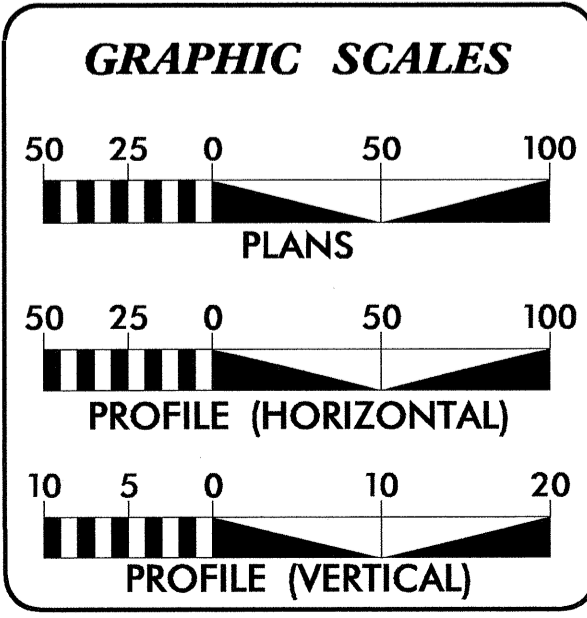
VICINITY MAP
THIS PROJECT IS WITHIN THE MUNICIPAL BOUNDARIES OF DURHAM.
---•---•---•--- DENOTES DETOUR ROUTE



CLEARING ON THIS PROJECT SHALL BE PERFORMED TO THE LIMITS ESTABLISHED BY METHOD III.

TIP PROJECT: B-3638

CONTRACT: 202436



SHEET NO.	DESCRIPTION
UO-1	TITLE SHEET
UO-2	UTILITY BY OTHERS PLAN SHEET

UTILITY OWNERS ON PROJECT

- (1) POWER - DUKE ENERGY
- (2) WATER - CITY OF DURHAM

PREPARED IN THE OFFICE OF:
**DIVISION OF HIGHWAYS
UTILITIES ENGINEERING
SECTION**

1591 MAIL SERVICES CENTER
RALEIGH, NC 27699-1591
PHONE (919) 707-6690
FAX (919) 250-4151

Roger Worthington, P.E. UTILITIES SECTION ENGINEER
Steve McKee, P.E. UTILITIES SQUAD LEADER PROJECT ENGINEER
Donald Proper UTILITIES PROJECT DESIGNER

UTILITIES BY OTHERS

NOTE:
ALL PROPOSED UTILITY WORK
SHOWN ON THIS SHEET WILL
BE DONE BY OTHERS

EXISTING CITY OF DURHAM
30" WATER MAIN EASEMENT

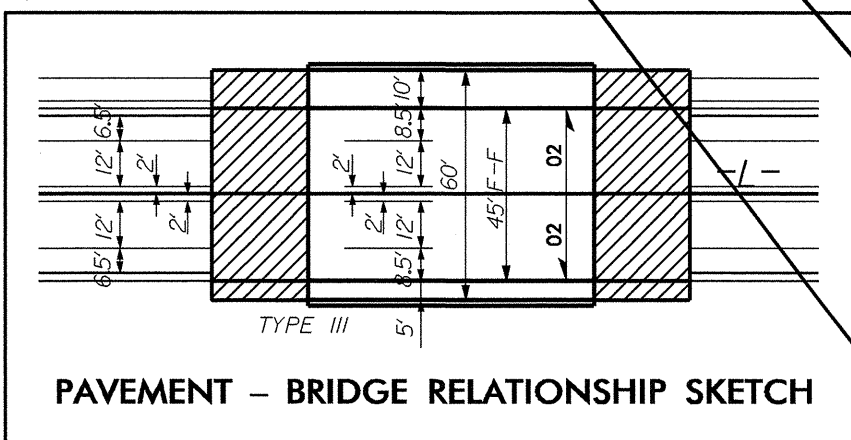
PROP. CITY OF DURHAM
36" WATER MAIN

PROP. (3) DUKE ENERGY
UTILITY POLES

PROP. (4) DUKE ENERGY
O/H POWER LINES

-L-

PI Sta 14+27.68	PI Sta 18+37.21	PI Sta 19+50.31
$\Delta = 1^{\circ}00'48.7"$ (RT)	$\Delta = 1^{\circ}10'26.3"$ (LT)	$\Delta = 1^{\circ}10'26.3"$ (RT)
D = 1'02'16.7"	D = 1'02'16.7"	D = 1'02'16.7"
L = 97.65'	L = 113.10'	L = 113.10'
T = 48.82'	T = 56.55'	T = 56.55'
R = 5,520.00'	R = 5,520.00'	R = 5,520.00'



INSTALL CURB RAMP AT EXISTING
CROSSWALK SALVAGE GRANITE
CURBSTONES FOR RETENTION BY
DUKE UNIVERSITY.

