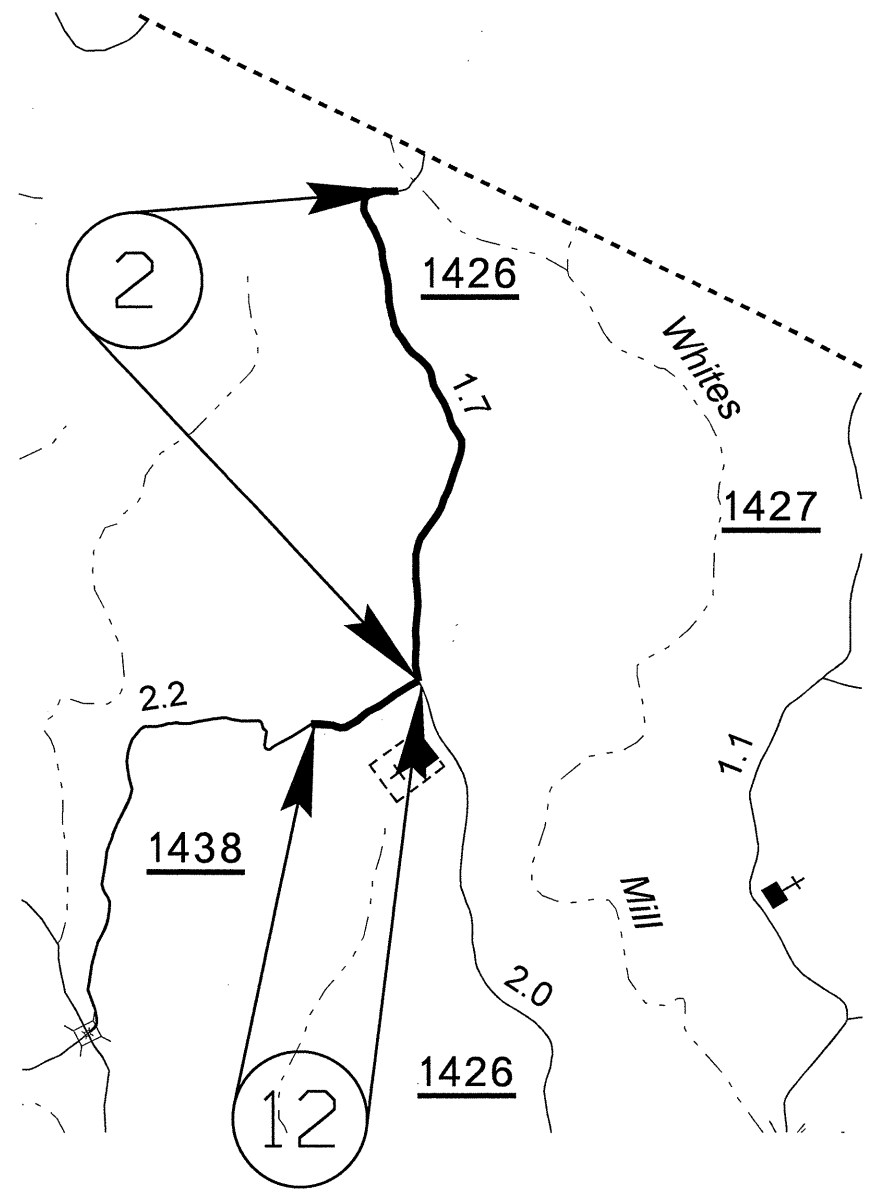
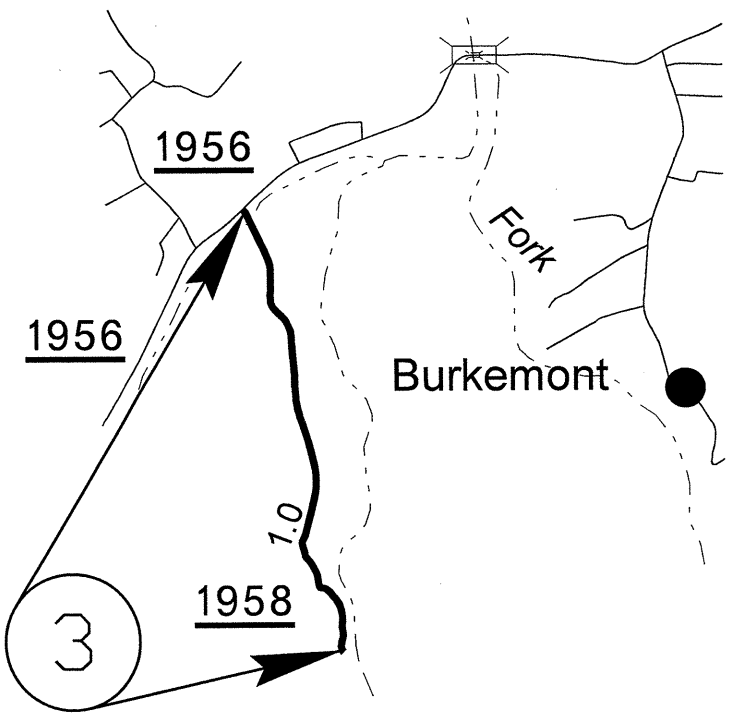
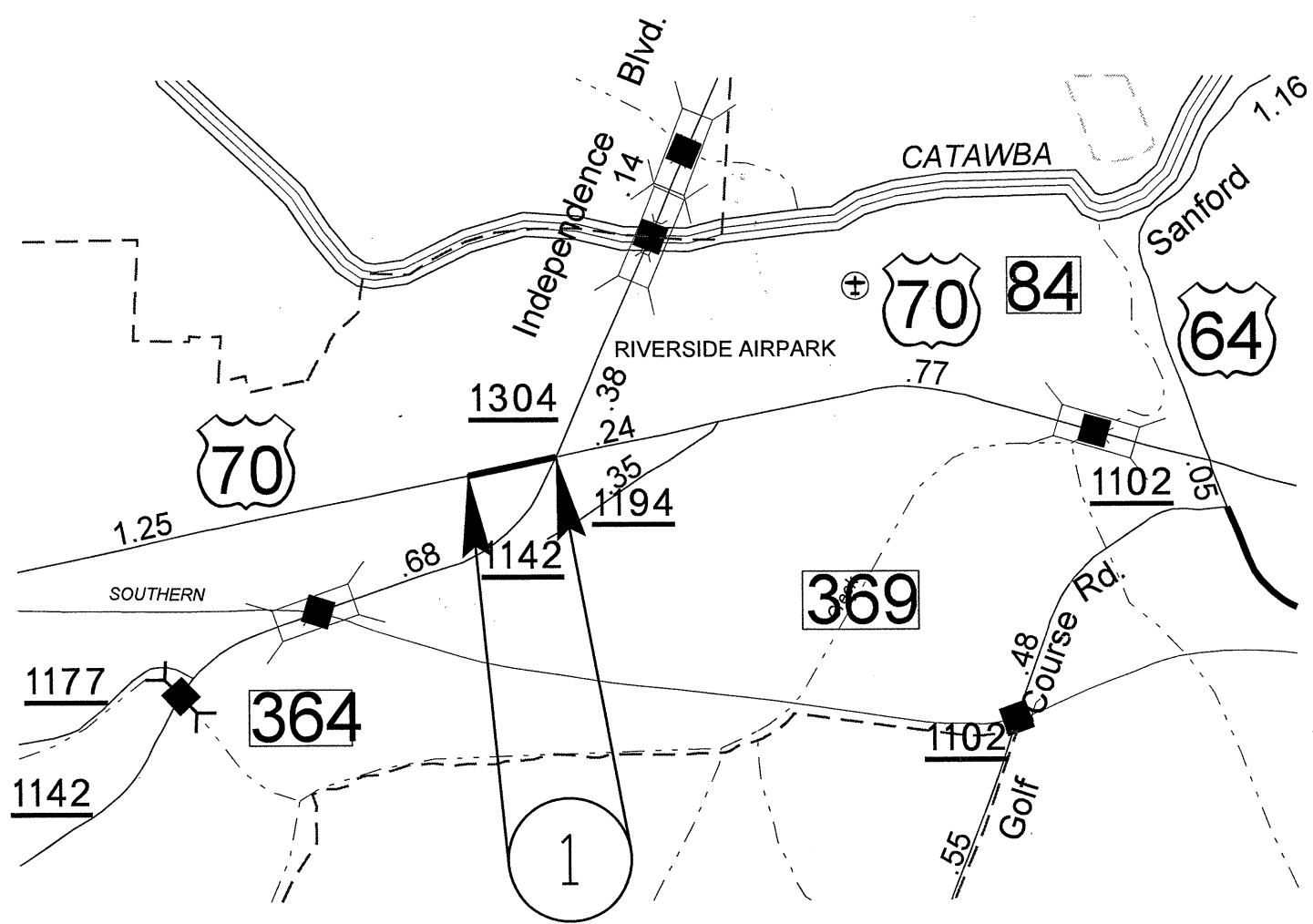
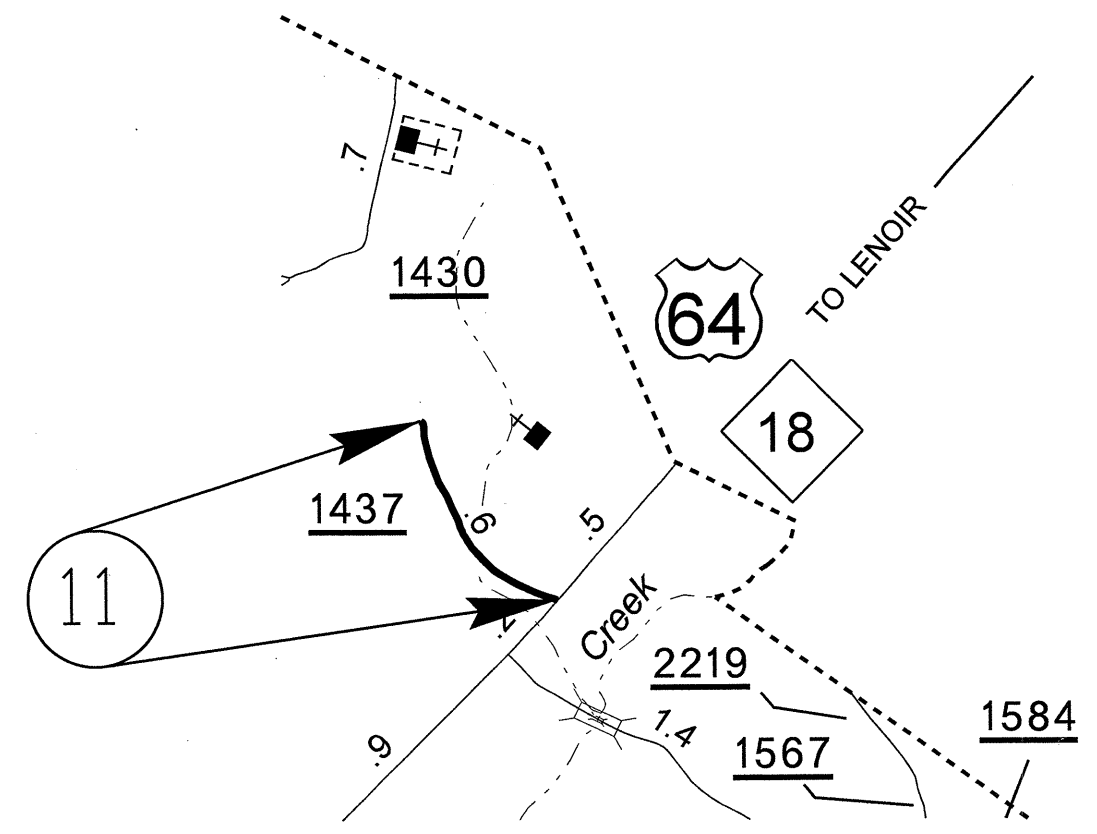
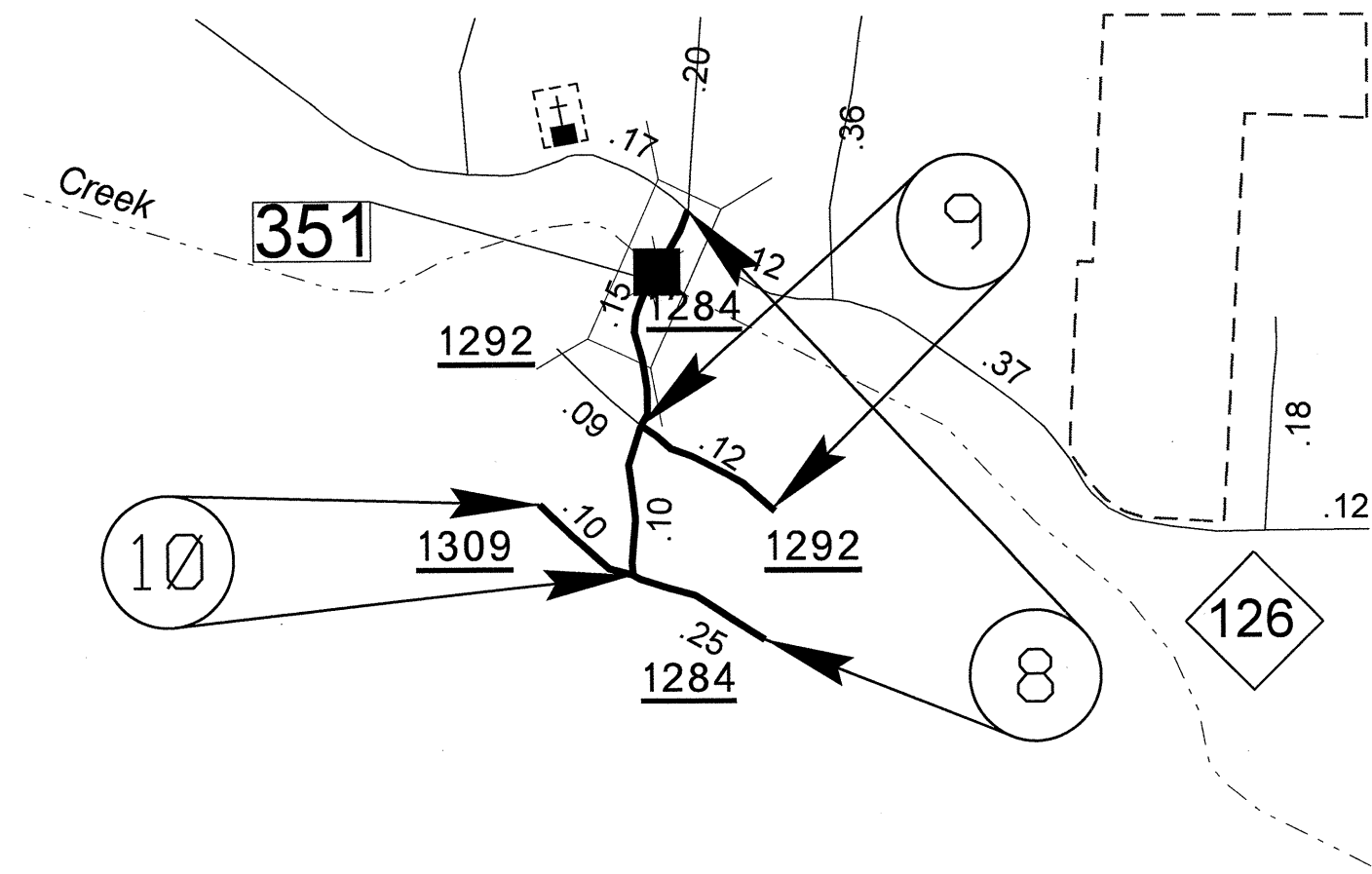


PROJECT NO.	SHEET NO.	TOTAL SHEETS
13CR.10121.10 13CR.20121.10	1	



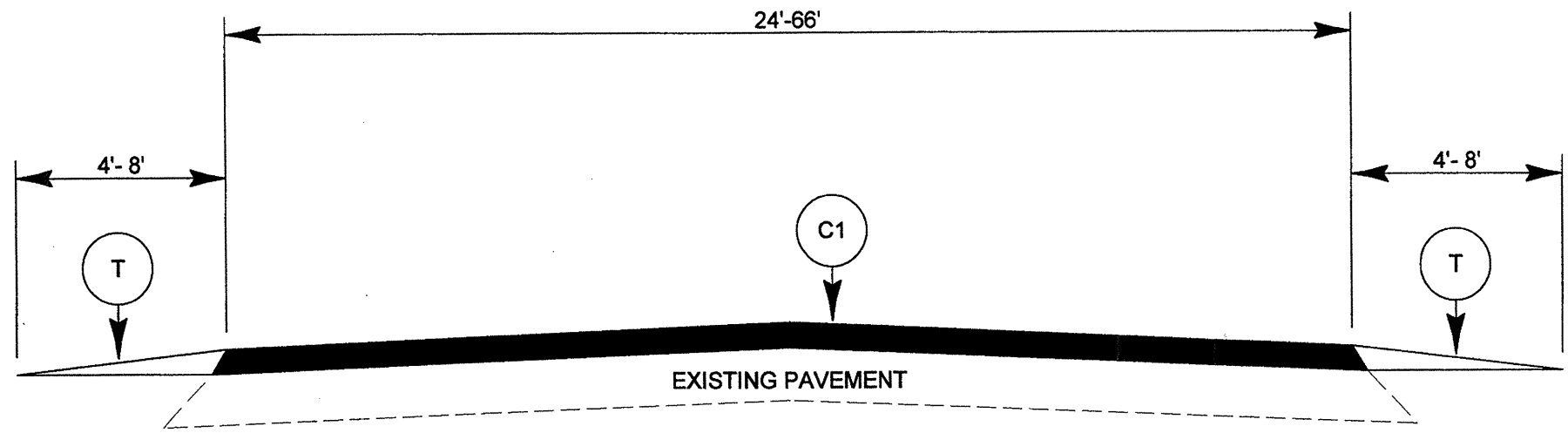
BURKE COUNTY

PROJECT NO.	SHEET NO.	TOTAL SHEETS
13CR.10121.10 13CR.20121.10	3	

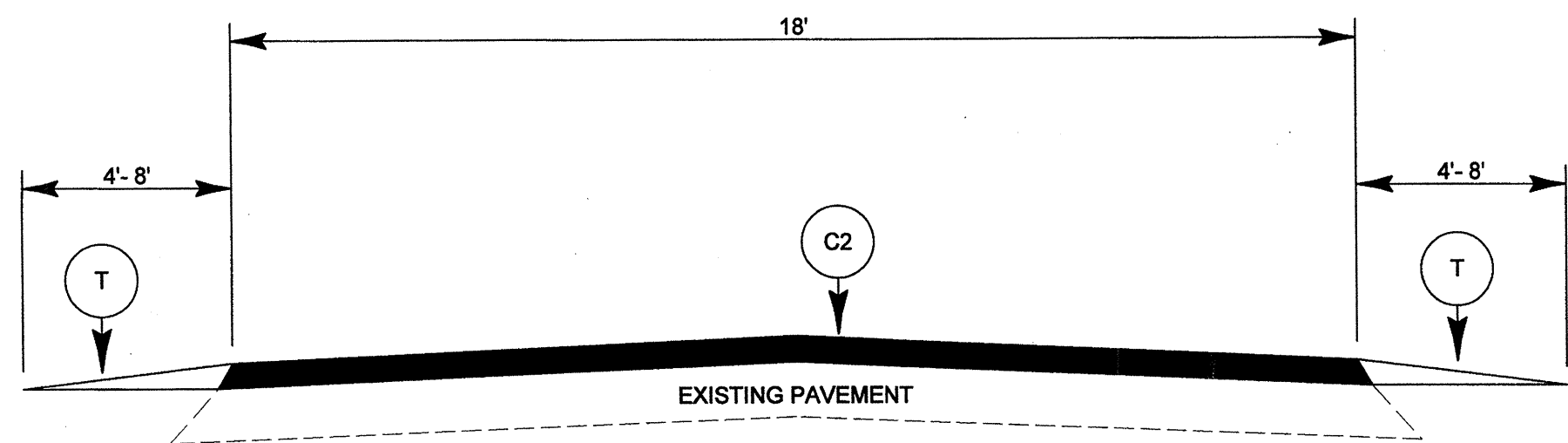


BURKE COUNTY

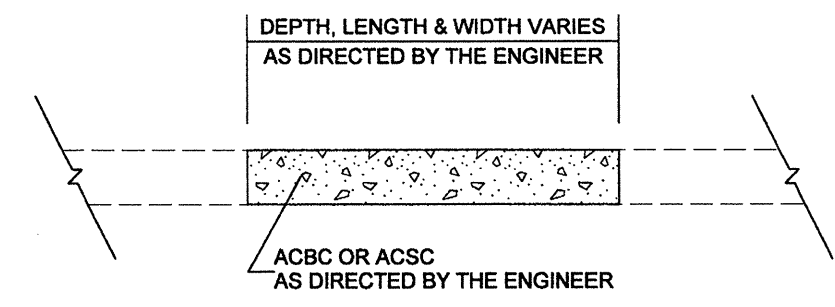
PROJECT NO.	SHEET NO.	TOTAL SHEETS
13CR.10121.10, 13CR.20121.10	4	



TYPICAL SECTION NO. 1



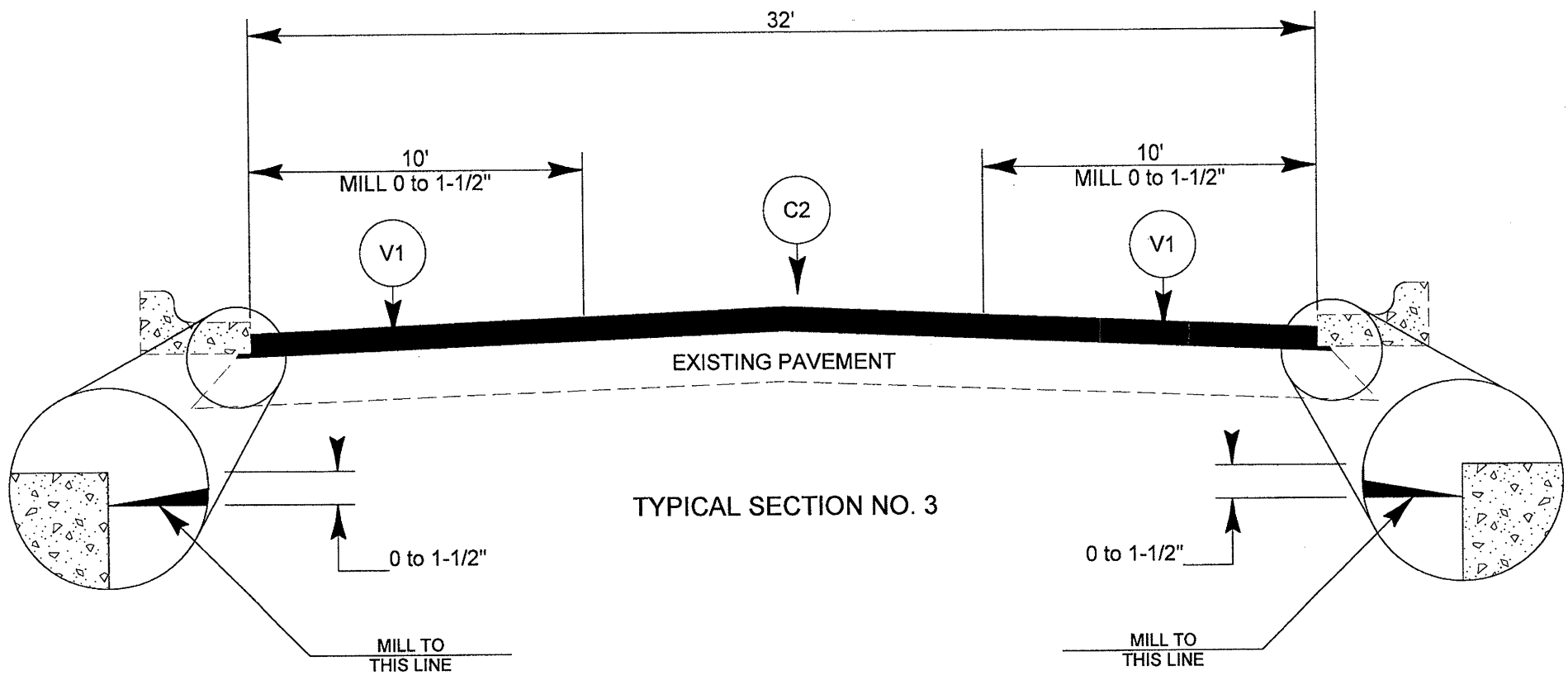
TYPICAL SECTION NO. 2



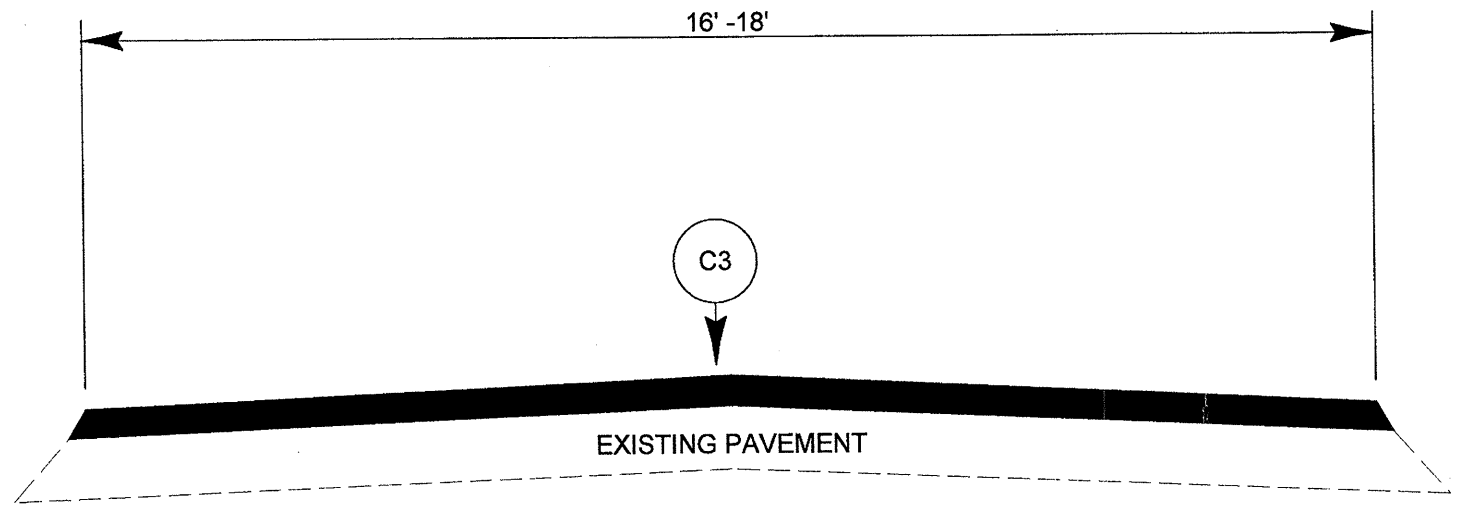
PATCHING EXISTING PAVEMENT

PAVEMENT SCHEDULE	
C1	PROP. APPROX. 1-1/2" ASPHALT CONCRETE SURFACE COURSE, TYPE S9.5B, AT AN AVERAGE RATE OF 168 LBS. PER SQ. YD
C2	PROP. APPROX. 1-1/2" ASPHALT CONCRETE SURFACE COURSE, TYPE SF9.5A, AT AN AVERAGE RATE OF 165 LBS. PER SQ. YARD
C3	PROP. APPROX. 1" ASPHALT CONCRETE SURFACE COURSE, TYPE SF9.5A, AT AN AVERAGE RATE OF 110 LBS. PER SQ. YARD
T	SHOULDER RECONSTRUCTION
V1	MILLING ASPHALT PAVEMENT, 0" TO 1-1/2" DEPTH

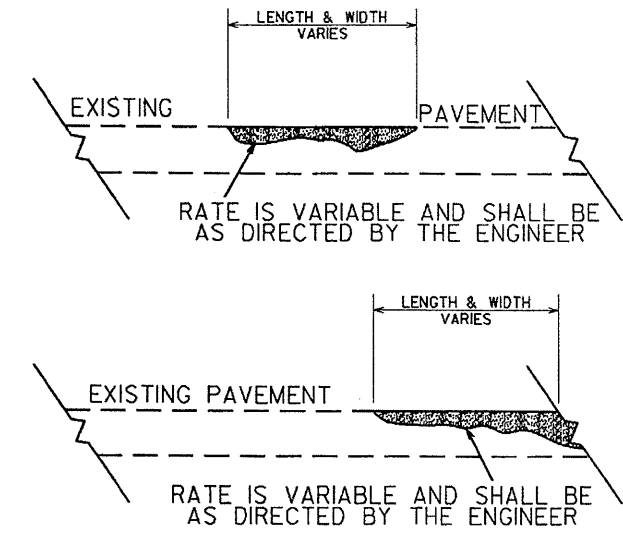
PROJECT NO. 13CR.10121.10, 13CR.20121.10	SHEET NO. 5	TOTAL SHEETS
--	----------------	--------------



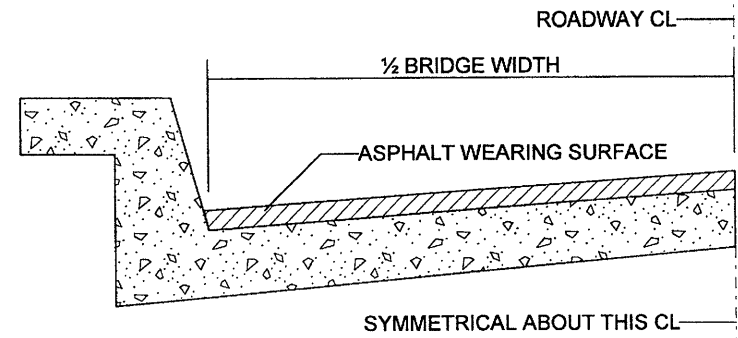
TYPICAL SECTION NO. 3



TYPICAL SECTION NO. 4



DETAIL SHOWING METHOD OF WEDGING



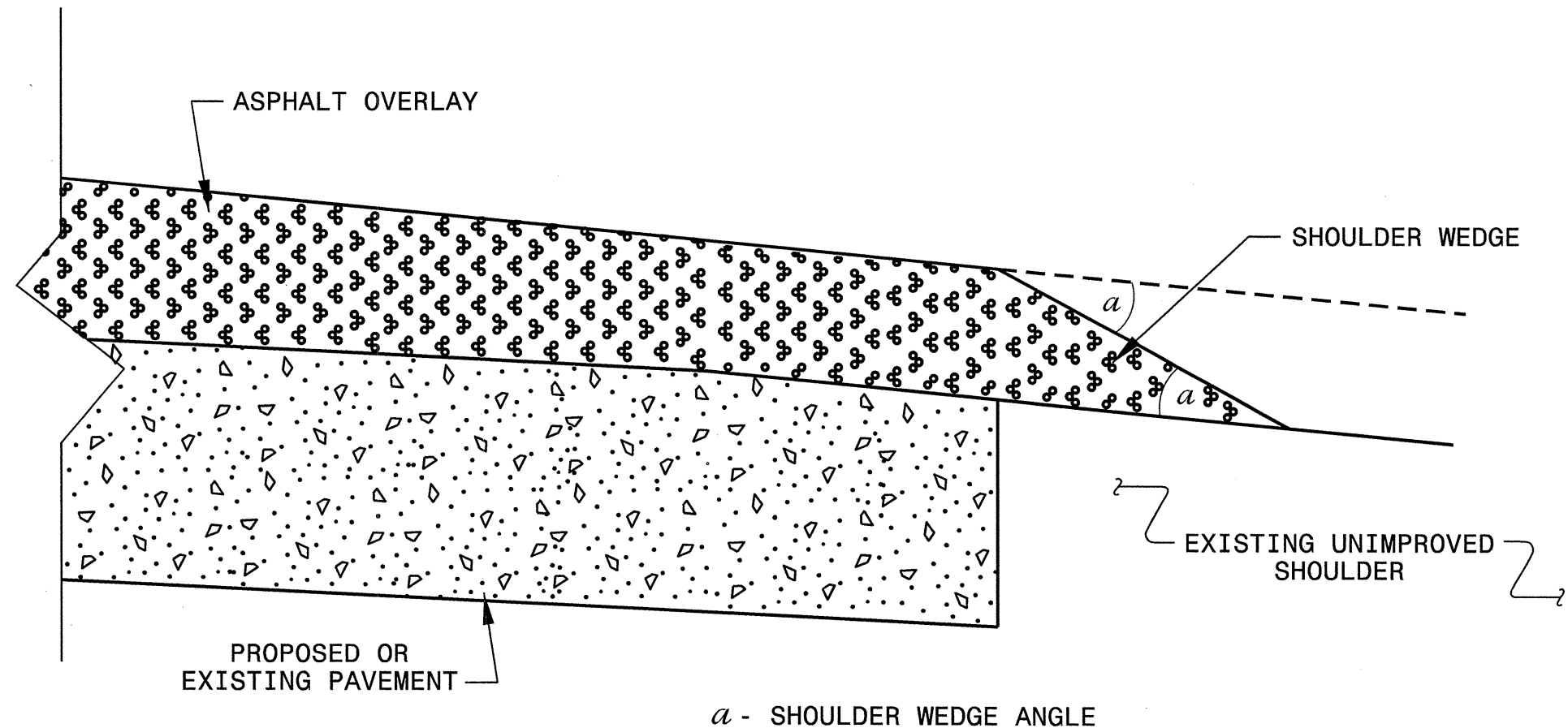
BRIDGE HALF TYPICAL SECTION

FOR BRIDGES WITH FLOOR DRAINS, CARE SHALL BE EXERCISED IN PLACING THE WEARING SURFACE AROUND FLOOR DRAINS SO AS NOT TO HINDER EFFECTIVE DRAINAGE. ALL DRAINS SHALL BE LEFT OPEN

THE PROPOSED WEARING SURFACE SHALL VARY IN THICKNESS AS NECESSARY TO PROVIDE A SMOOTH RIDING SURFACE. THE MINIMUM THICKNESS SHOULD DEPEND ON PAVEMENT TYPE AS FOLLOWS: S4.75A 1/2", SF9.5A 1.0", S9.5X 1.5", S12.5X 2.0", ULTRATHIN HOT MIX ASPHALT-TYPE A 1/2", ULTRATHIN HOT MIX ASPHALT-TYPE B 5/8", ULTRATHIN HOT MIX ASPHALT-TYPE C 3/4". THE MAXIMUM THICKNESS SHOULD DEPEND ON PAVEMENT TYPE AS FOLLOWS: S4.75A 1.0", SF9.5A 1.5", S9.5X 2.0", S12.5X 2.0", ULTRATHIN HOT MIX ASPHALT-TYPE A 3/4", ULTRATHIN HOT MIX ASPHALT-TYPE B 5/8", ULTRATHIN HOT MIX ASPHALT-TYPE C 1/2".

NOTES

ALL UNPAVED ROADS TO BE RESURFACED 50' FROM EDGE OF PAVEMENT OF MAIN PROJECT. ALL PAVED S.R. ROADS TO BE RESURFACED TO THE ENDS OF THE RADII, OR AS DIRECTED BY THE ENGINEER. EDGES, PAVEMENT WIDENING, INTERSECTIONS AND BRIDGE FLARES ARE INCLUDED IN THE TABLE OF QUANTITIES. SHOULDERS AND DITCHES ARE TO BE CONSTRUCTED BY OTHERS UNLESS OTHERWISE INDICATED. BRIDGES ARE TO BE RESURFACED AT LOCATIONS AND TO DEPTH AS DIRECTED BY THE ENGINEER.



SHOULDER WEDGE DETAIL

CR-APR-2012 12:08
 DO NOT USE FOR NAME
 C:\projects\Special Details\howerton\shoulderwedge\shoulderwgedetail.dgn

CONTRACT STANDARDS AND DEVELOPMENT UNIT	
Office 919-707-6950 FAX 919-250-4119	
SHOULDER WEDGE DETAIL	
ORIGINAL BY: T. SPELL	DATE: 7-19-11
MODIFIED BY:	DATE:
CHECKED BY:	DATE:
FILE SPEC.: s:\usr\details\stand\shoulderwgedetail.dgn	

PROJECT NO.	SHEET NO.	TOTAL NO.
13CR.10121.10, 13CR.20121.10	7	

SUMMARY OF QUANTITIES

PROJECT NO	COUNTY	MAP NO	ROUTE	DESCRIPTION	TYP	FINAL SURFACE TESTING REQUIRED	LENGTH MI	WIDTH FT	INCIDENTAL STONE BASE TON	SHOULDER RECONSTRUCTION SMI	0" TO 1 1/2" MILLING SY	ASPHALT CONC SURFACE COURSE, TYPE S9.5B TON	ASPHALT CONC SURFACE COURSE, TYPE SF9.5A TON	ASPHALT BINDER FOR PLANT MIX TON	PATCHING EXISTING PAVEMENT TON	ADJUSTMENT OF MANHOLES EA	ADJUSTMENT OF METER BOXES OR VALVE BOXES EA	
13CR.10121.10	Burke	1	US 70	FROM MP 8.97 TO SR 1142 MP 9.10	1	NO	0.13	24-66	10.00	0.18		250		15				
TOTAL FOR PROJ NO. 13CR.10121.10							0.13		10.00	0.18		250		15				
13CR.20121.10	Burke	2	SR 1426	FROM NEW PAVEMENT NEAR CO. LINE MP 0.30 TO SR 1438 MP 1.70	2	NO	1.4	18	70.00	2.80			1,375	92	314			
		3	SR 1958	FROM SR 1956 MP 0 TO EOM MP 1.0	2	NO	1	18	50.00	2.00			975	65	415		3	
		4	SR 1523	FROM SR 1525 MP 0 TO US 70 MP 0.92	2	NO	0.92	18	46.00	1.84			898	60	215		3	
		5	SR 1642	FROM CATAWBA CO. LINE MP 0 TO SR 1653 MP 0.4	3	NO	0.4	32			4,700		840	56	75	7	3	
		6	SR 1764	FROM US 70 MP 0 TO EOM MP 0.26	4	NO	0.26	16					148	10	40			
		7	SR 1869	FROM SR 1764 MP 0 TO EOM MP 0.1	4	NO	0.1	16					68	5				
		8	SR 1284	FROM NC 126 MP 0 TO DE MP 0.53	4	NO	0.53	18					340	23	134		2	
		9	SR 1292	FROM SR 1284 MP 0 TO DE MP 0.25	4	NO	0.25	18					160	11	37		2	
		10	SR 1309	FROM SR 1284 MP 0 TO EOM MP 0.09	4	NO	0.1	18					64	4	21			
		11	SR 1437	FROM US 64 MP 0 TO DE MP 0.67	4	NO	0.67	18					430	29	60			
		12	SR 1438	FROM EOP MP 1.95 TO SR 1426 MP 2.15	4	NO	0.2	18					128	9				
TOTAL FOR PROJ NO. 13CR.20121.10							5.83		166.00	6.64	4,700		5,426	364	1,311	7	13	
GRAND TOTAL							5.96		176.00	6.82	4,700	250	5,426	379	1,311	7	13	

THERMOPLASTIC AND PAINT QUANTITIES

PROJECT NO	COUNTY	MAP NO	ROUTE	DESCRIPTION	LENGTH	WIDTH	4685000000-E	4686000000-E	4695000000-E	4725000000-E			4810000000-E		4905000000-N		
							4" X 90 M WHITE THERMO LF	4" X 120 M WHITE THERMO LF	4" X 120 M YELLOW THERMO LF	8" X 90 M WHITE THERMO LF	THERMOPLASTIC PAVEMENT MARKING SYMBOL (90 MILS, LT ARROW) EA	THERMOPLASTIC PAVEMENT MARKING SYMBOL (90 MILS, STR ARROW) EA	THERMOPLASTIC PAVEMENT MARKING SYMBOL (90 MILS, STR & RT ARROW) EA	PAINT PAVEMENT MARKING LINES (4") WHITE LF	PAINT PAVEMENT MARKING LINES (4") YELLOW LF	SNOW/PLOWABLE PAVEMENT MARKERS EA	
13CR.10121.10	Burke	1	US 70	FROM MP 8.97 TO SR 1142 MP 9.10	0.13	36	1,373	60	1,373	288	2	1	1		26		
TOTAL FOR PROJ NO. 13CR.10121.10							0.13	1,373	60	1,373	288	2	1	1		26	
13CR.20121.10	Burke	2	SR 1426	FROM NEW PAVEMENT NEAR CO. LINE MP 0.30 TO SR 1438 MP 1.70	1.4	18								29,568	29,568		
		3	SR 1958	FROM SR 1956 MP 0 TO EOM MP 1.0	1	18								21,120	21,120		
		4	SR 1523	FROM SR 1525 MP 0 TO US 70 MP 0.92	0.92	18								19,430	19,430		
		5	SR 1642	FROM CATAWBA CO. LINE MP 0 TO SR 1653 MP 0.4	0.4	32									8,448		
		6	SR 1764	FROM US 70 MP 0 TO EOM MP 0.26	0.26	16											
		7	SR 1869	FROM SR 1764 MP 0 TO EOM MP 0.1	0.1	16											
		8	SR 1284	FROM NC 126 MP 0 TO DE MP 0.53	0.53	18											
		9	SR 1292	FROM SR 1284 MP 0 TO DE MP 0.25	0.25	18											
		10	SR 1309	FROM SR 1284 MP 0 TO EOM MP 0.09	0.1	18											
		11	SR 1437	FROM US 64 MP 0 TO DE MP 0.67	0.67	18											
		12	SR 1438	FROM EOP MP 1.95 TO SR 1426 MP 2.15	0.2	18								4,224	4,224		
TOTAL FOR PROJ NO. 13CR.20121.10							5.83								74,342	82,790	
GRAND TOTAL							5.96	1,373	60	1,373	288	2	1	1	74,342	82,790	26
								1,433							157,132		