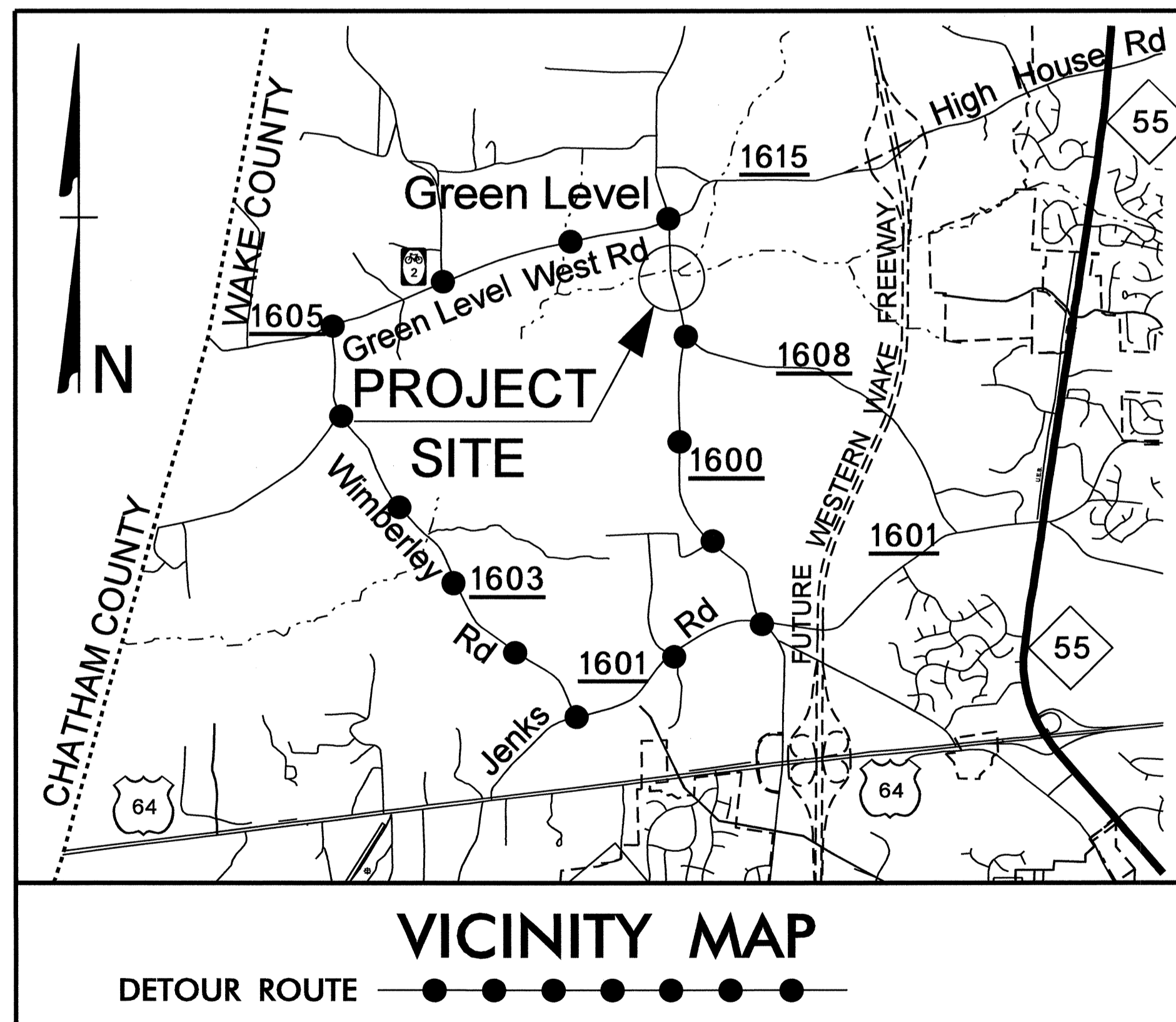
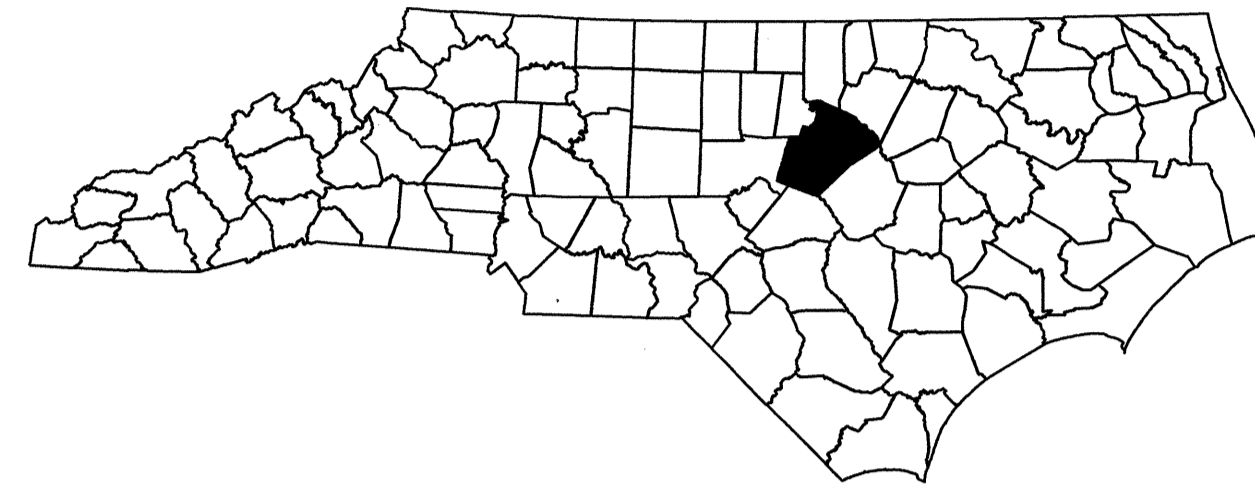


STATE OF NORTH CAROLINA
DIVISION OF HIGHWAYS

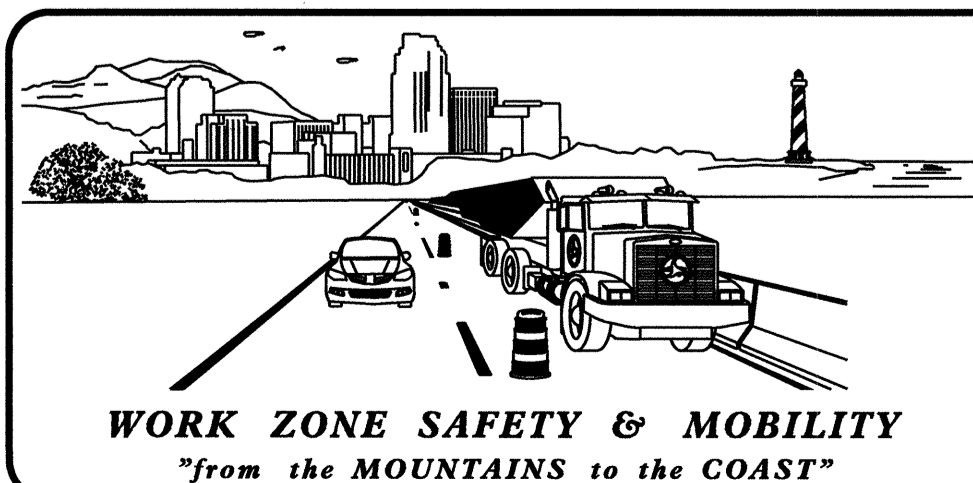
TRANSPORTATION MANAGEMENT PLAN

WAKE COUNTY



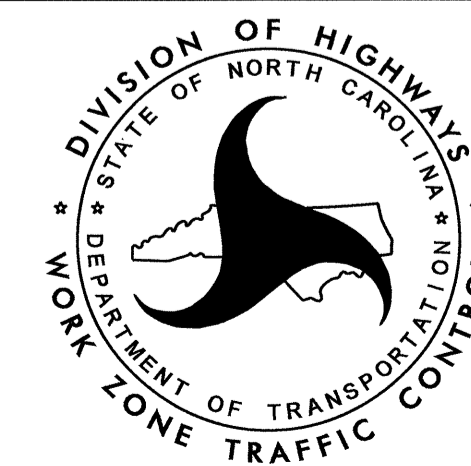
LOCATION: BRIDGE NO. 55 OVER
WHITE OAK CREEK
ON SR 1600 (GREEN
LEVEL CHURCH RD)

TYPE OF WORK: GRADING, PAVING,
DRAINAGE, BOARDWALK,
AND STRUCTURE



N.C.D.O.T. WORK ZONE TRAFFIC CONTROL
1561 MAIL SERVICE CENTER (MSC) RALEIGH, NC 27699-1561
750 N. GREENFIELD PARKWAY, GARNER, NC 27529 (DELIVERY)
PHONE: (919) 773-2800 FAX: (919) 771-2745

J. S. BOURNE, P.E. STATE TRAFFIC MANAGEMENT ENGINEER
J. S. KITE, P.E. TRAFFIC CONTROL PROJECT ENGINEER
D. W. BISSETTE, P.E. TRAFFIC CONTROL PROJECT DESIGN ENGINEER
M. T. CARLISLE, E.I. TRAFFIC CONTROL DESIGN ENGINEER



APPROVED: *[Signature]*
DATE: 01-03-12

SEAL

INDEX OF SHEETS

| SHEET NO. | TITLE |
|-----------|---|
| TMP-1 | TITLE SHEET, VICINITY MAP, AND INDEX OF SHEETS |
| TMP-1A | LIST OF APPLICABLE ROADWAY STANDARD DRAWINGS AND LEGEND |
| TMP-1B | TRANSPORTATION OPERATIONS PLAN: (GENERAL NOTES, MANAGEMENT STRATEGIES, AND PHASING) |
| TMP-2 | OFF-SITE DETOUR |
| TMP-3 | ROAD CLOSURE |
| SD-1 | SPECIAL SIGN DESIGN |

03-JAN-2012 17:05
\\dot\dfs\oo\01\ppr\projects-B\B4697\TrafficControl\TCP\B-4697-TC-TMP-01.dgn
dwissette AT TE243610L

TIP PROJECT: B-4697

ROADWAY STANDARD DRAWINGS

THE FOLLOWING ROADWAY STANDARDS AS SHOWN IN "ROADWAY STANDARD DRAWINGS" - PROJECT SERVICES UNIT - N.C. DEPARTMENT OF TRANSPORTATION - RALEIGH, N.C., DATED JANUARY 2012 ARE APPLICABLE TO THIS PROJECT AND BY REFERENCE HEREBY ARE CONSIDERED A PART OF THESE PLANS:

| <u>STD. NO.</u> | <u>TITLE</u> |
|-----------------|-------------------------------|
| 1101.03 | TEMPORARY ROAD CLOSURES |
| 1101.05 | WORK ZONE VEHICLE ACCESSES |
| 1101.11 | TRAFFIC CONTROL DESIGN TABLES |
| 1110.01 | STATIONARY WORK ZONE SIGNS |
| 1145.01 | BARRICADES - TYPE III |

LEGEND

GENERAL

- DIRECTION OF TRAFFIC FLOW
- DIRECTION OF PEDESTRIAN TRAFFIC FLOW
- EXIST. PVMT.
- NORTH ARROW
- PROPOSED PVMT.

WORK AREA

REMOVAL

USER DEFINED (IF NEEDED)

USER DEFINED (IF NEEDED)

TRAFFIC CONTROL DEVICES

- BARRICADE (TYPE III)
- CONE
- DRUM SKINNY DRUM TUBULAR MARKER
- TEMPORARY CRASH CUSHION
- FLASHING ARROW PANEL (TYPE C)
- FLAGGER
- LAW ENFORCEMENT
- TRUCK MOUNTED IMPACT ATTENUATOR (TMIA)
- CHANGEABLE MESSAGE SIGN

TEMPORARY SIGNING

- PORTABLE SIGN
- STATIONARY SIGN
- STATIONARY OR PORTABLE SIGN

SIGNALS

- EXISTING PROPOSED TEMPORARY

PAVEMENT MARKINGS

- EXISTING LINES
- TEMPORARY LINES

PAVEMENT MARKERS

- CRYSTAL / CRYSTAL
- CRYSTAL / RED
- YELLOW / YELLOW

PAVEMENT MARKING SYMBOLS

- PAVEMENT MARKING SYMBOLS

23-DEC-2011 09:19 \\dot\dfsrooft\proj\TIP\Projects-B\B4697\TrafficControl\TCP\B-4697_TC-TMP_01A.dgn
cwbissette AT 1E24360L

| | | |
|-------------------------------|--|---|
| APPROVED: DATE: 12-23-11 | | <h3>ROADWAY STANDARD DRAWINGS & LEGEND</h3> |
|-------------------------------|--|---|

GENERAL NOTES

CHANGES MAY BE REQUIRED WHEN PHYSICAL DIMENSIONS IN THE DETAIL DRAWINGS, STANDARD DETAILS, AND ROADWAY DETAILS ARE NOT ATTAINABLE TO MEET FIELD CONDITIONS OR RESULT IN DUPLICATE OR UNDESIRED OVERLAPPING OF DEVICES. MODIFICATION MAY INCLUDE: MOVING, SUPPLEMENTING, COVERING, OR REMOVAL OF DEVICES AS DIRECTED BY THE ENGINEER.

THE FOLLOWING GENERAL NOTES APPLY AT ALL TIMES FOR THE DURATION OF THE CONSTRUCTION PROJECT EXCEPT WHEN OTHERWISE NOTED IN THE PLAN OR DIRECTED BY THE ENGINEER.

PAVEMENT EDGE DROP OFF REQUIREMENTS

- A) BACKFILL AT A 6:1 SLOPE UP TO THE EDGE AND ELEVATION OF EXISTING PAVEMENT IN AREAS ADJACENT TO AN OPENED TRAVEL LANE THAT HAS AN EDGE OF PAVEMENT DROP-OFF AS FOLLOWS:

BACKFILL DROP-OFFS THAT EXCEED 2 INCHES ON ROADWAYS WITH POSTED SPEED LIMITS OF 45 MPH OR GREATER.

BACKFILL DROP-OFFS THAT EXCEED 3 INCHES ON ROADWAYS WITH POSTED SPEED LIMITS LESS THAN 45 MPH.

BACKFILL WITH SUITABLE COMPACTED MATERIAL, AS APPROVED BY THE ENGINEER, AT NO EXPENSE TO THE DEPARTMENT.

- B) DO NOT EXCEED A DIFFERENCE OF 2 INCHES IN ELEVATION BETWEEN OPEN LANES OF TRAFFIC FOR NOMINAL LIFTS OF 1.5 INCHES. INSTALL ADVANCE WARNING "UNEVEN LANES" SIGNS (W8-11) 500 FT IN ADVANCE AND A MINIMUM OF EVERY HALF MILE THROUGHOUT THE UNEVEN AREA.

TRAFFIC PATTERN ALTERATIONS

- C) NOTIFY THE ENGINEER TWENTY ONE (21) CALENDAR DAYS PRIOR TO ANY TRAFFIC PATTERN ALTERATION.

SIGNING

- D) PROVIDE SIGNING AND DEVICES REQUIRED TO CLOSE THE ROAD ACCORDING TO THE ROADWAY STANDARD DRAWINGS AND TRAFFIC CONTROL PLANS.
- E) PROVIDE SIGNING REQUIRED FOR THE OFF-SITE DETOUR ROUTE AS SHOWN IN THE TRAFFIC CONTROL PLANS.
- F) COVER OR REMOVE ALL SIGNS AND DEVICES REQUIRED TO CLOSE THE ROAD WHEN ROAD CLOSURE IS NOT IN OPERATION.
- G) COVER OR REMOVE ALL SIGNS REQUIRED FOR THE OFF-SITE DETOUR WHEN THE DETOUR IS NOT IN OPERATION.
- H) ENSURE ALL NECESSARY SIGNING IS IN PLACE PRIOR TO ALTERING ANY TRAFFIC PATTERN.

TRAFFIC CONTROL DEVICES

- I) PLACE TYPE III BARRICADES, WITH "ROAD CLOSED" SIGN R11-2 ATTACHED, OF SUFFICIENT LENGTH TO CLOSE ENTIRE ROADWAY.

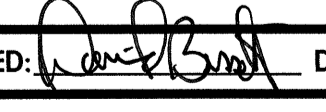


MANAGEMENT STRATEGIES

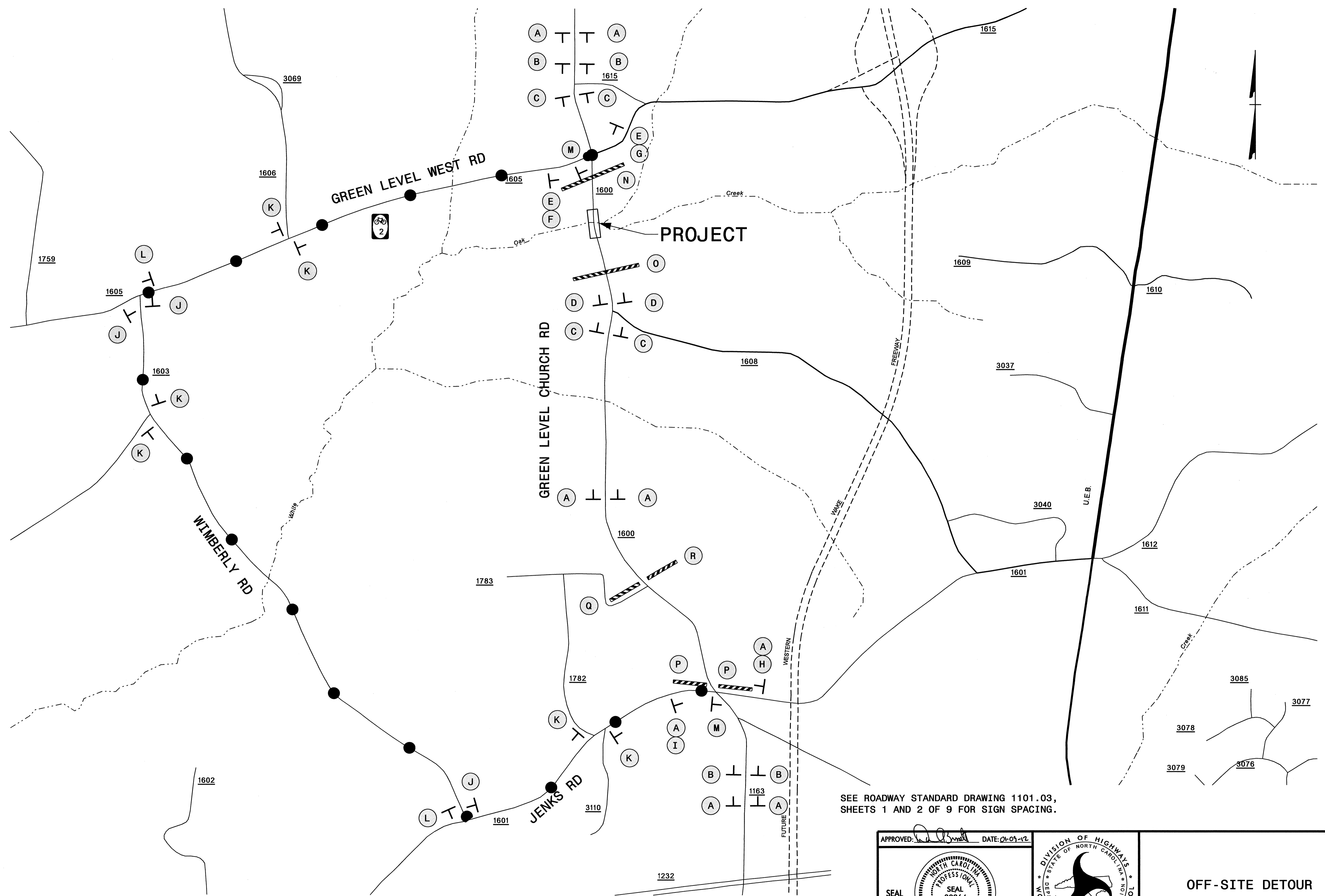
- CLOSE GREEN LEVEL CHURCH ROAD TO THROUGH TRAFFIC BETWEEN GREEN LEVEL ROAD AND JENKS ROAD
- DIRECT THROUGH TRAFFIC TO OFF SITE DETOUR
- MAINTAIN LOCAL TRAFFIC
- CLOSE WHITE OAK GREENWAY BOARDWALK BETWEEN GREEN LEVEL CHURCH ROAD AND BATCHELOR BRANCH GREENWAY

PHASING

- STEP 1 INSTALL SIGNS AND BARRICADES CLOSING SR 1600 (GREEN LEVEL CHURCH RD) TO THROUGH TRAFFIC AS SHOWN ON TMP-2 AND TMP-3 AND IN ACCORDANCE WITH ROADWAY STANDARD DRAWING 1101.03, SHEETS 1 AND 2 OF 9.
- STEP 2 PERFORM THE FOLLOWING WORK WITHIN THE ROAD CLOSURE:
- INSTALL SIGNS AND BARRICADES CLOSING THE WHITE OAK GREENWAY BOARDWALK BETWEEN GREEN LEVEL CHURCH ROAD AND BATCHELOR BRANCH GREENWAY. (SPECIAL SIGN DESIGN WILL BE PROVIDED BY THE TOWN OF CARY)
 - REMOVE THE EXISTING STRUCTURE.
 - COMPLETE CONSTRUCTION OF THE PROPOSED STRUCTURE.
 - COMPLETE CONSTRUCTION OF THE PROPOSED ROADWAY SECTION -L- UP TO BUT NOT INCLUDING THE FINAL LAYER OF SURFACE FROM STATION 15+25 TO STATION 31+25.
 - COMPLETE CONSTRUCTION OF THE PROPOSED SECTION OF THE WHITE OAK GREENWAY BOARDWALK.
- STEP 3 WORKING WITHIN THE ROAD CLOSURE PLACE THE FINAL LAYER OF SURFACE COURSE, THE FINAL PAVEMENT MARKINGS AND THE FINAL PAVEMENT MARKERS ON -L- FROM STATION 15+25 TO STATION 31+25
- STEP 4 REMOVE ALL WORK ZONE TRAFFIC CONTROL DEVICES AND OPEN SR 1600 (GREEN LEVEL CHURCH RD) TO THROUGH TRAFFIC. OPEN THE WHITE OAK GREENWAY BOARDWALK.

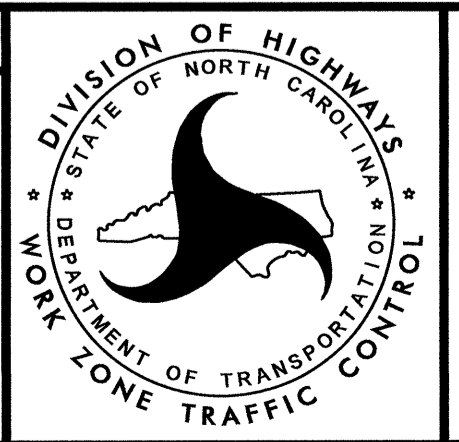
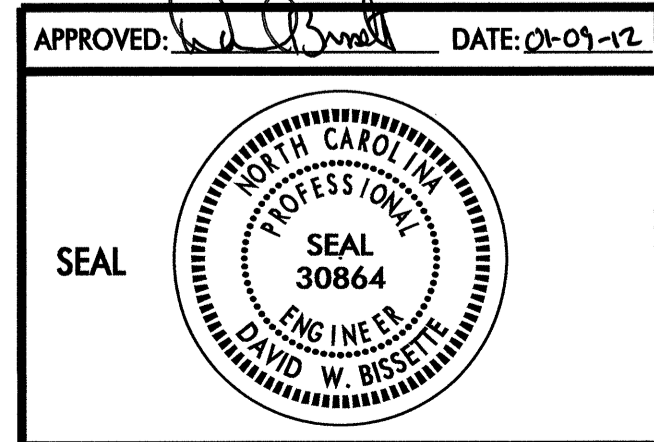
09-JAN-2012 16:06
 N:\cort\dfs\00701\p\c\1\TIPP\Projects-B\B4697\TrafficControl\TCP\B-4697-TC-TMP-01B.dgn
 dmdissette AT 1E243610L

| | | | |
|--|---|---|--|
| APPROVED:  DATE: 01-09-12 |  |  | <h3 style="margin: 0;">TRANSPORTATION OPERATIONS PLAN</h3> |
|--|---|---|--|



SEE ROADWAY STANDARD DRAWING 1101.03,
SHEETS 1 AND 2 OF 9 FOR SIGN SPACING.

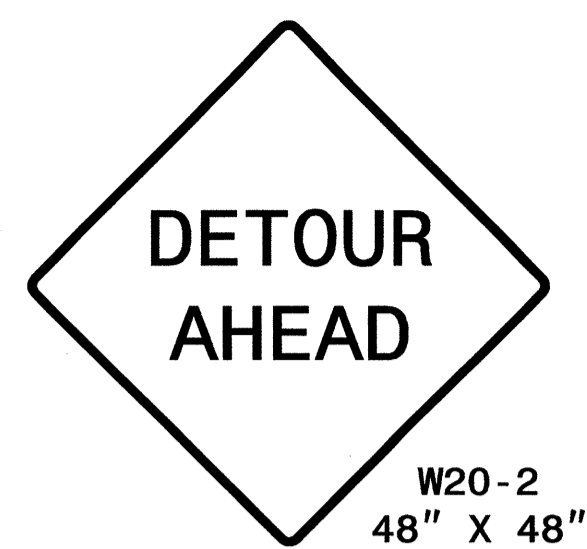
09-JAN-2012 16:08
 \\dot\dfsroot\j\p\proj\TrafficControl\TCP\B-4697.TC_TMP_02.dgn
 dwbissette AT 1E24960L



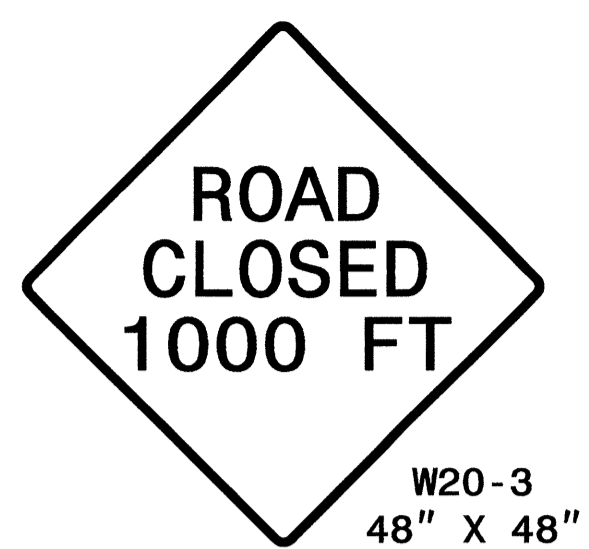
OFF-SITE DETOUR



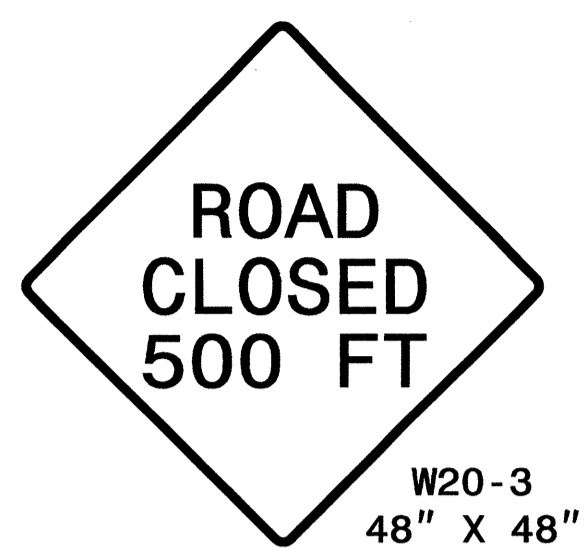
(A)
(8 EA)



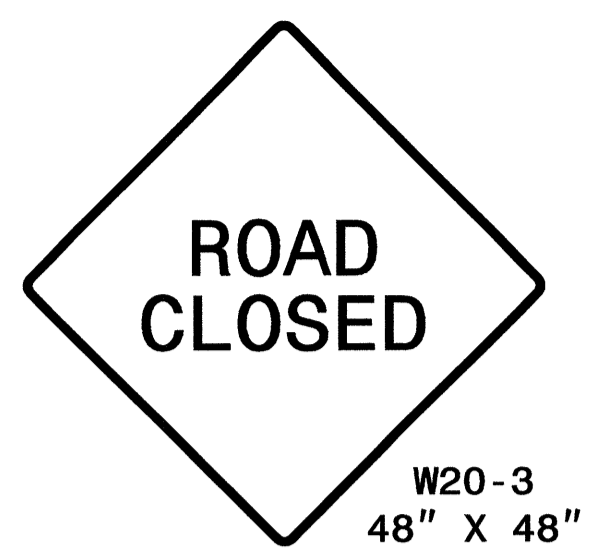
(B)
(4 EA)



(C)
(4 EA)



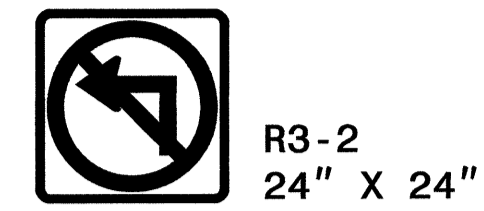
(D)
(2 EA)



(E)
(2 EA)



(F)
(1 EA)



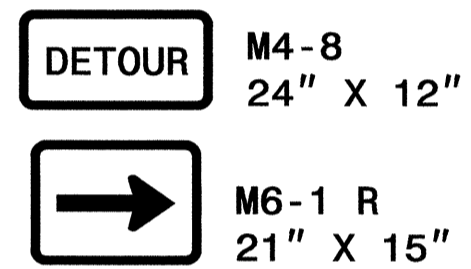
(G)
(1 EA)



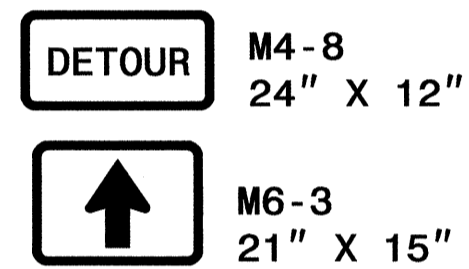
(H)
(1 EA)



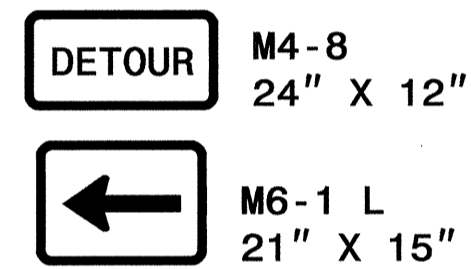
(I)
(1 EA)



(J)
(3 EA)



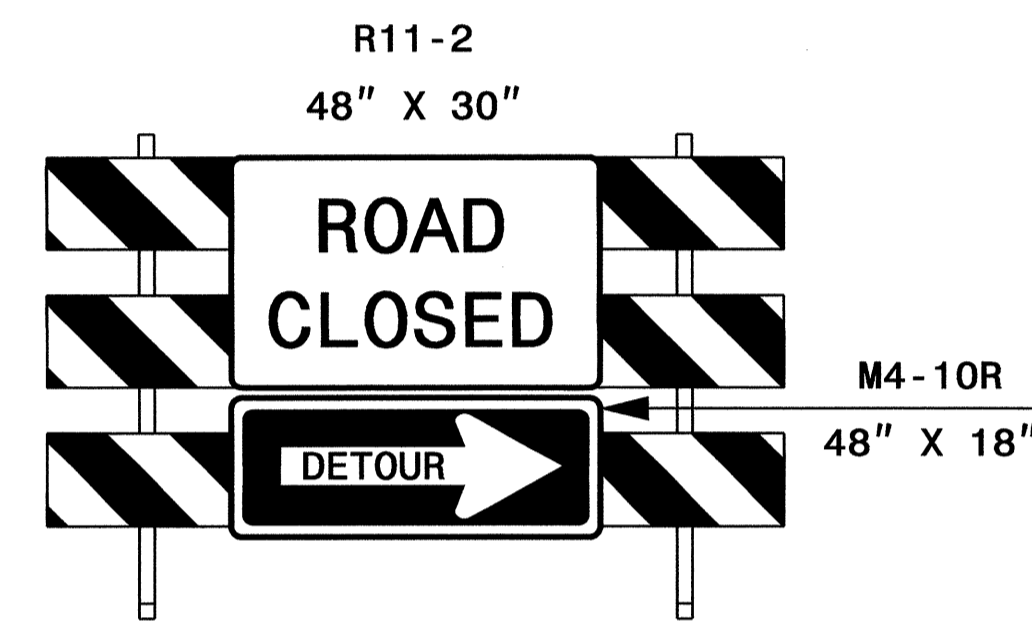
(K)
(6 EA)



(L)
(2 EA)

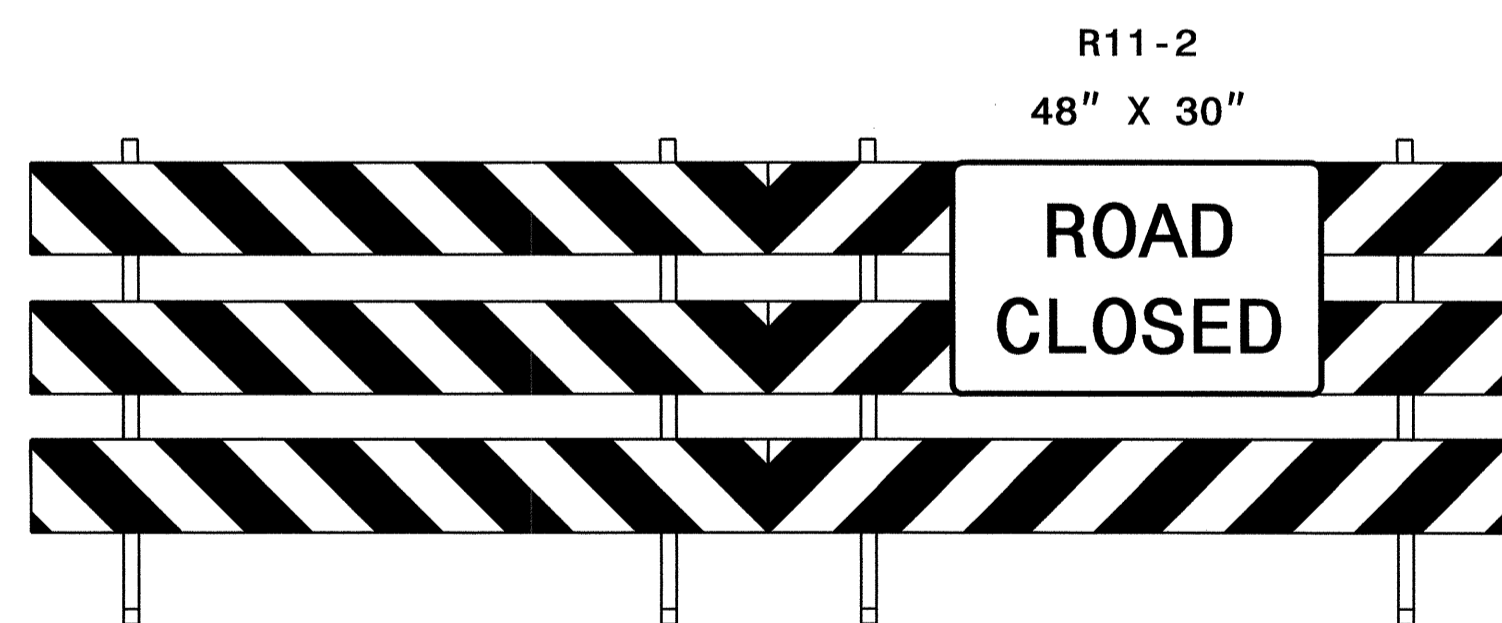


(M)
(2 EA)



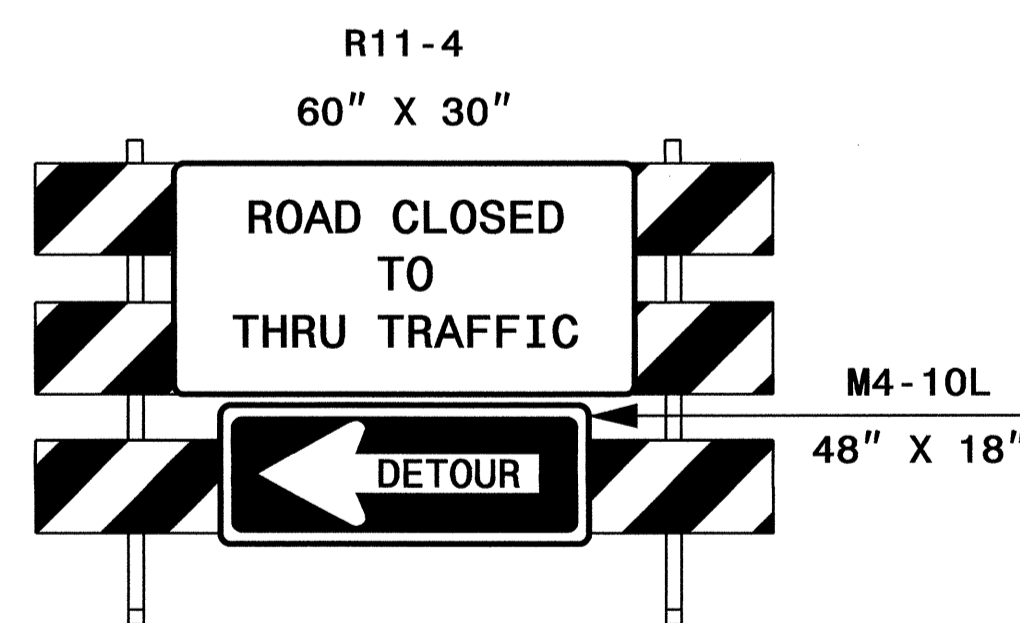
TYPE III BARRICADE(S)

(N)
(1 SET)



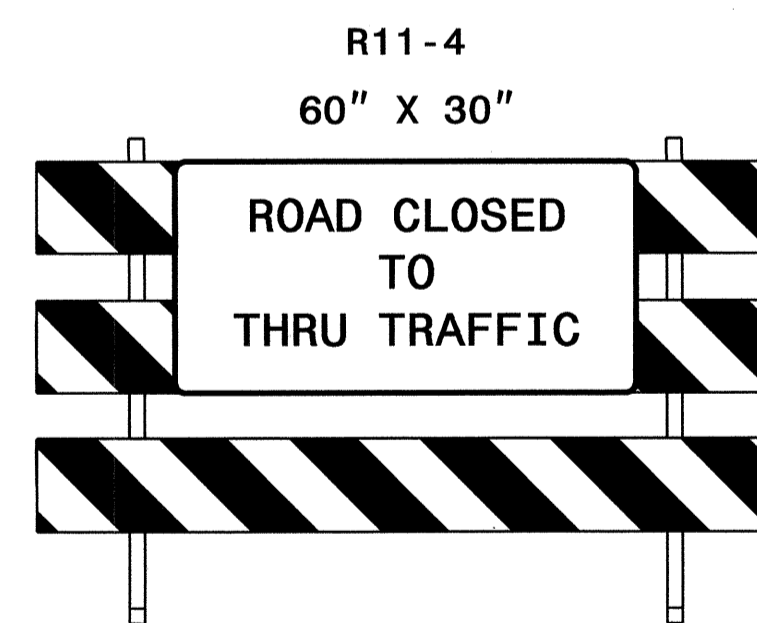
TYPE III BARRICADE(S)

(O)
(1 SET)



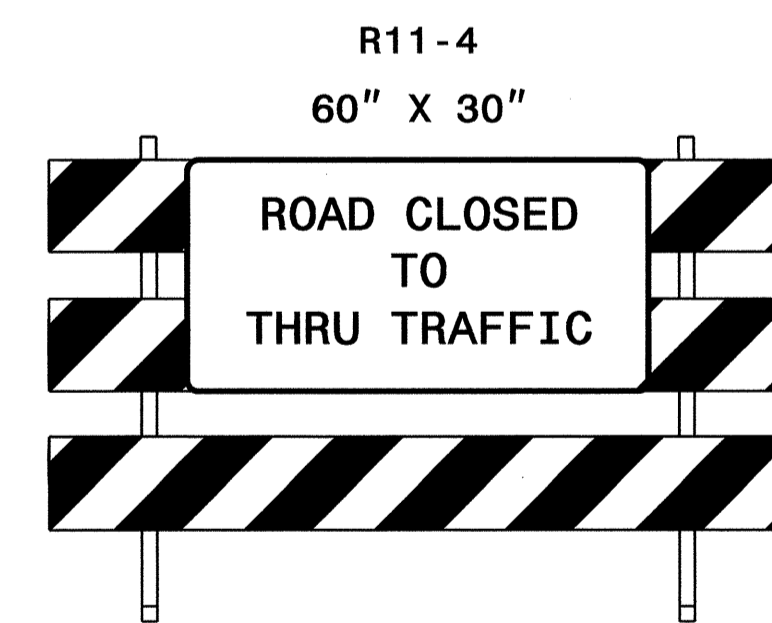
TYPE III BARRICADE

(P)
(2 EA)



TYPE III BARRICADE

(Q)
(1 EA)

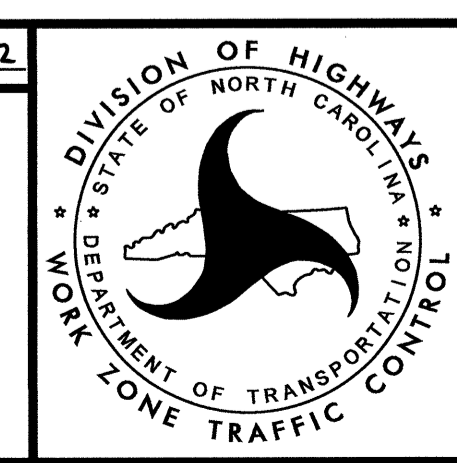


TYPE III BARRICADE

(R)
(1 EA)

09-JAN-2012 16:40
N:\gct\cfrs\00101\pcc\1\TIP\Projects\B\B4697\TrafficControl\TCP\B-4697-TC-TMP-03.dgn
amd\set116 AT 1E243610L

APPROVED: DATE: 01-09-12



ROAD CLOSURE