

TIP: U-5132

CONTRACT: C202816

STATE OF NORTH CAROLINA  
DEPARTMENT OF TRANSPORTATION

PAVEMENT MARKING PLAN  
ON SLOW COUNTY

LOCATION: NEW NC 24 ACCESS NEW BASE ENTRY ROAD  
FOR CAMP LEJEUNE MARINE CORPS BASE

PROJECT REFERENCE NO. U-5132	SHEET NO. PM-1
---------------------------------	-------------------

ROADWAY STANDARD DRAWING

THE FOLLOWING ROADWAY STANDARDS AS APPEAR IN "ROADWAY STANDARD DRAWINGS" - PROJECT SERVICES UNIT - N.C. DEPARTMENT OF TRANSPORTATION - RALEIGH, N.C., DATED JANUARY 2012 ARE APPLICABLE TO THIS PROJECT AND BY REFERENCE HEREBY ARE CONSIDERED A PART OF THESE PLANS:

STD. NO.	TITLE
1205.01	PAVEMENT MARKINGS - LINE TYPES AND OFFSETS
1205.02	PAVEMENT MARKINGS - TWO-LANE AND MULTI-LANE ROADWAYS
1205.03	PAVEMENT MARKINGS - EXIT AND ENTRANCE RAMP
1205.04	PAVEMENT MARKINGS - INTERSECTIONS
1205.05	PAVEMENT MARKINGS - TURN LANES
1205.06	PAVEMENT MARKINGS - LANE DROPS
1205.07	PAVEMENT MARKINGS - PEDESTRIAN CROSSWALKS
1205.08	PAVEMENT MARKINGS - SYMBOLS AND WORD MESSAGES
1205.09	PAVEMENT MARKINGS - PAINTED ISLANDS
1205.10	PAVEMENT MARKINGS - SCHOOL AREAS
1205.13	PAVEMENT MARKINGS - LANE REDUCTIONS
1250.01	RAISED PAVEMENT MARKERS - INSTALLATION SPACING
1251.01	RAISED PAVEMENT MARKERS - PERMANENT AND TEMPORARY
1253.01	RAISED PAVEMENT MARKERS - SNOWPLOWABLE
1261.01	GUARDRAIL AND BARRIER DELINEATORS - INSTALLATION SPACING
1261.02	GUARDRAIL AND BARRIER DELINEATORS - TYPES AND MOUNTING
1262.01	GUARDRAIL END DELINEATION
1264.01	OBJECT MARKERS - TYPES
1264.02	OBJECT MARKERS - INSTALLATION

INDEX

SHEET NO.	DESCRIPTION
PM-1	PAVEMENT MARKING PLAN TITLE SHEET
PM-2 THROUGH PM-13	PAVEMENT MARKING DETAILS

GENERAL NOTES

THE FOLLOWING GENERAL NOTES APPLY AT ALL TIMES FOR THE DURATION OF THE CONSTRUCTION PROJECT, EXCEPT WHEN OTHERWISE NOTED IN THE PLAN, OR DIRECTED BY THE ENGINEER.

A) INSTALL PAVEMENT MARKINGS AND PAVEMENT MARKERS ON THE FINAL SURFACE AS FOLLOWS:

ROAD NAME	MARKING	MARKER
-L- LINE AND RAMP	THERMOPLASTIC	SNOWPLOWABLE
-Y- LINES	THERMOPLASTIC	PERMANENT RAISED
CONCRETE SURFACES	POLYUREA HRE	PERMANENT RAISED
BRIDGE DECK SURFACES	POLYUREA HRE	PERMANENT RAISED

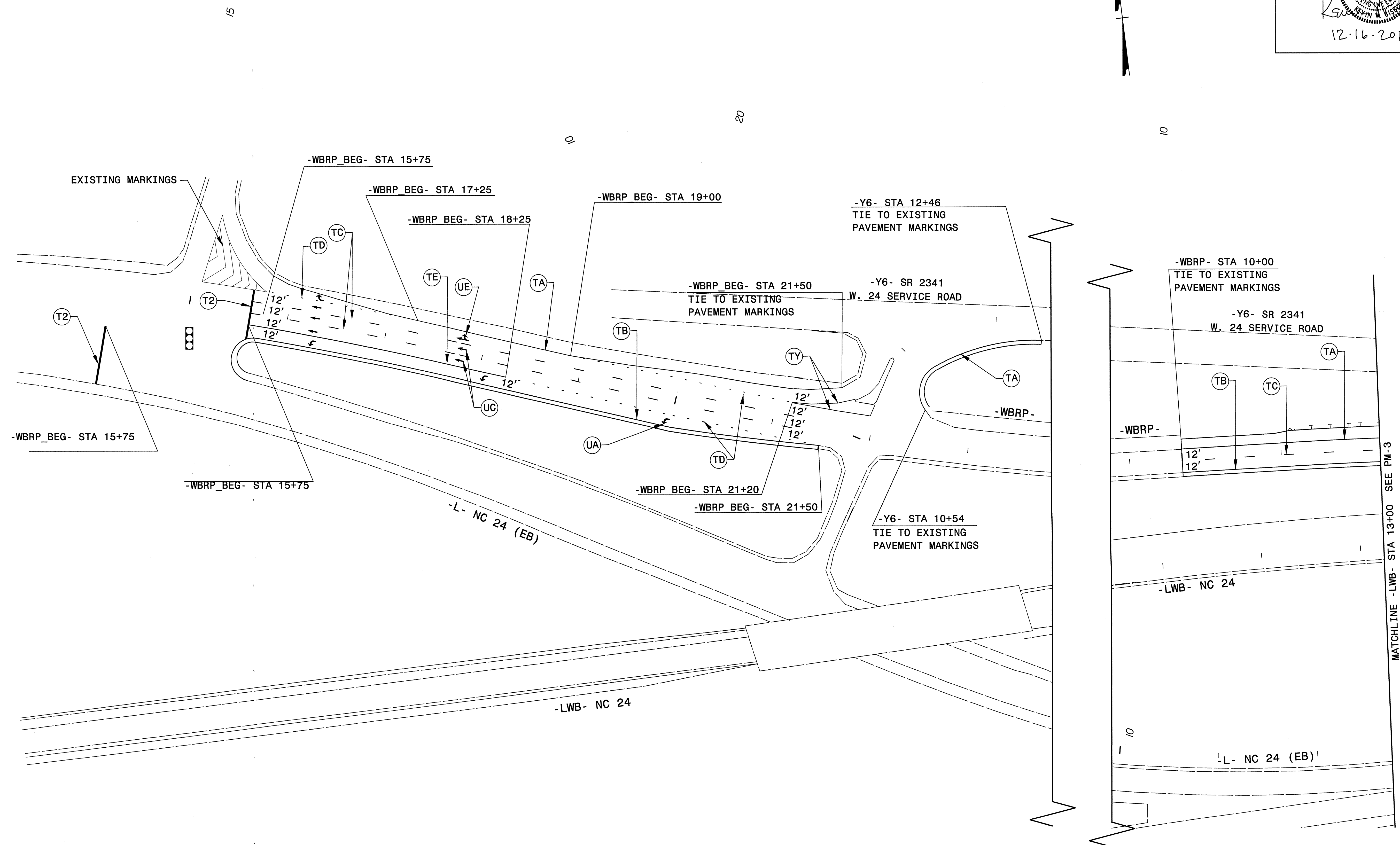
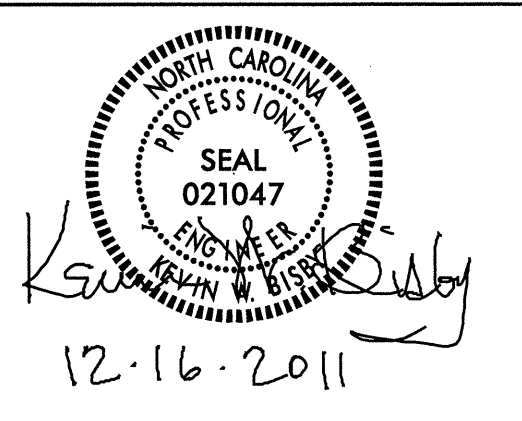
- B) TIE PROPOSED PAVEMENT MARKING LINES TO EXISTING PAVEMENT MARKING LINES.
- C) REMOVE/REPLACE ANY CONFLICTING/DAMAGED PAVEMENT MARKINGS AND MARKERS.
- D) STOPBAR LOCATION AT NON-SIGNALIZED INTERSECTIONS MAY BE ADJUSTED AS DIRECTED BY THE ENGINEER.

PAVEMENT MARKING SCHEDULE

THERMOPLASTIC	POLYUREA HIGHLY REFLECTIVE ELEMENTS
(TA) - 4" WHITE EDGE LINE, (90 MIL)	(UA) - LT TURN ARROW, (90 MIL)
(TB) - 4" YELLOW EDGE LINE, (90 MIL)	(UB) - RT TURN ARROW, (90 MIL)
(TC) - 4" 10 FT WHITE SKIP, (120 MIL)	(UC) - STRAIGHT ARROW, (90 MIL)
(TD) - 4" 3'-9"/SP WHITE MINI SKIP, (120 MIL)	(UD) - MERGE ARROW, (90 MIL)
(TE) - 4" WHITE SOLID LANE LINE, (120 MIL)	(UE) - COMBO STRAIGHT/ RIGHT, (90 MIL)
(TI) - 4" YELLOW DOUBLE CENTER, (120 MIL)	(UI) - ALPHANUMERIC CHARACTER, (120 MIL)
(TK) - 8" 3'-9"/SP WHITE MINI SKIP, (120 MIL)	(YL) - 24" WHITE YIELD LINE SYMBOL, (90 MIL)
(TL) - 6" WHITE SOLID LANE LINE, (120 MIL)	(TB) - 4" 2'-6"/SP WHITE MINI SKIP, (120 MIL)
(TT) - 8" YELLOW DIAGONAL, (90 MIL)	
(TY) - 8" WHITE GORE LINE, (90 MIL)	
(T2) - 24" WHITE STOP BAR, (120 MIL)	
(T3) - 24" WHITE TRANSVERSE BAND, (120 MIL)	

PAVEMENT MARKING PLAN  
PLANS PREPARED BY :  
K.W. BISBY, P.E. PROJECT ENGINEER  
N. HARRIS PROJECT DESIGNER

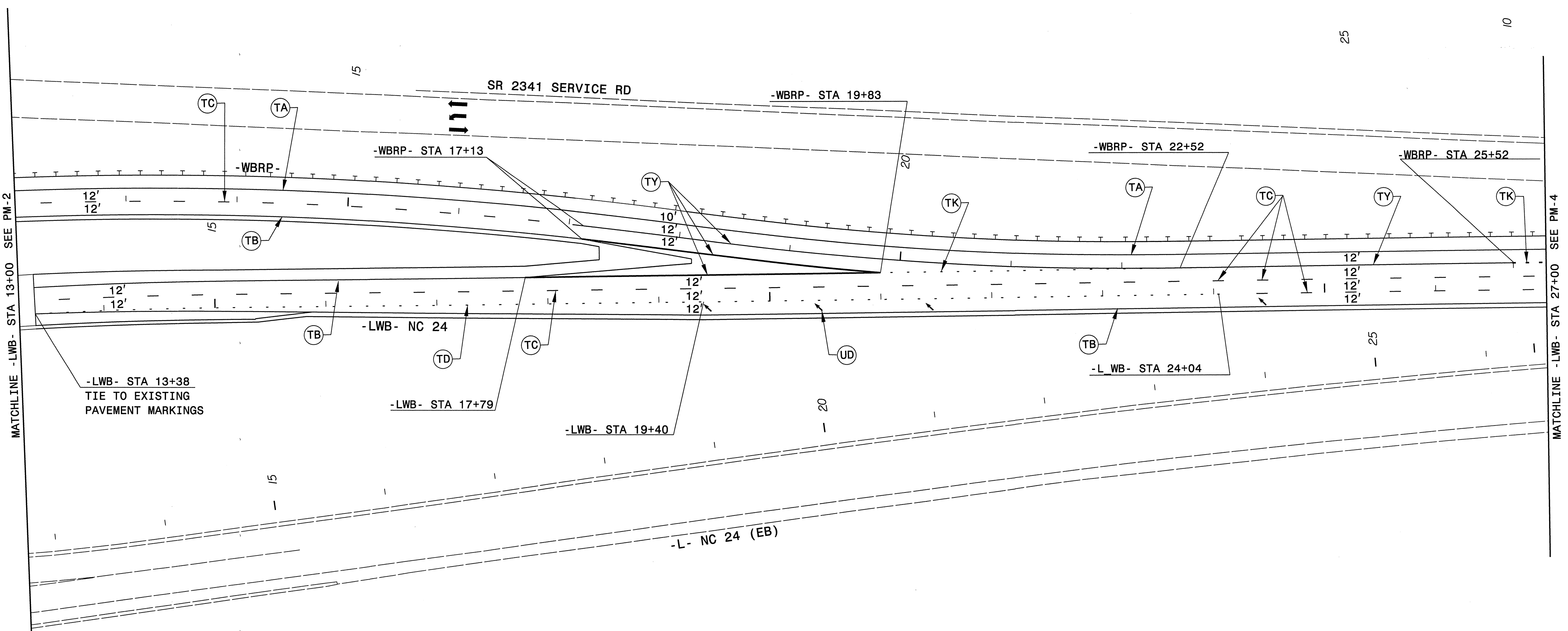
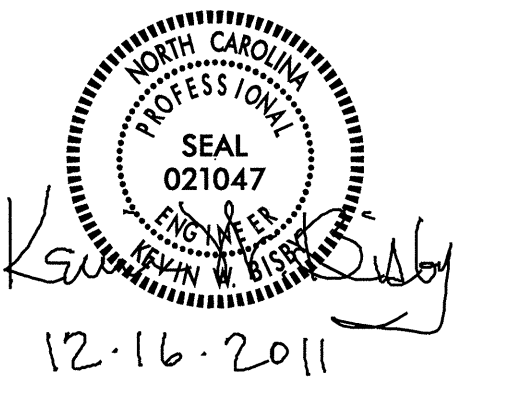
PLANS PREPARED BY :  
**RK&K**  
RUMMEL, KLEPPER & KAHL, LLP  
900 RIDGEFIELD DRIVE SUITE 350  
RALEIGH, NORTH CAROLINA 27609-3960  
NC LICENSE NO. F-0112 • (919) 878-9560



8/17/99  
R:\14720\TrafficControl\PMU5132.pmp\pm02.dgn  
12/16/2011  
micole

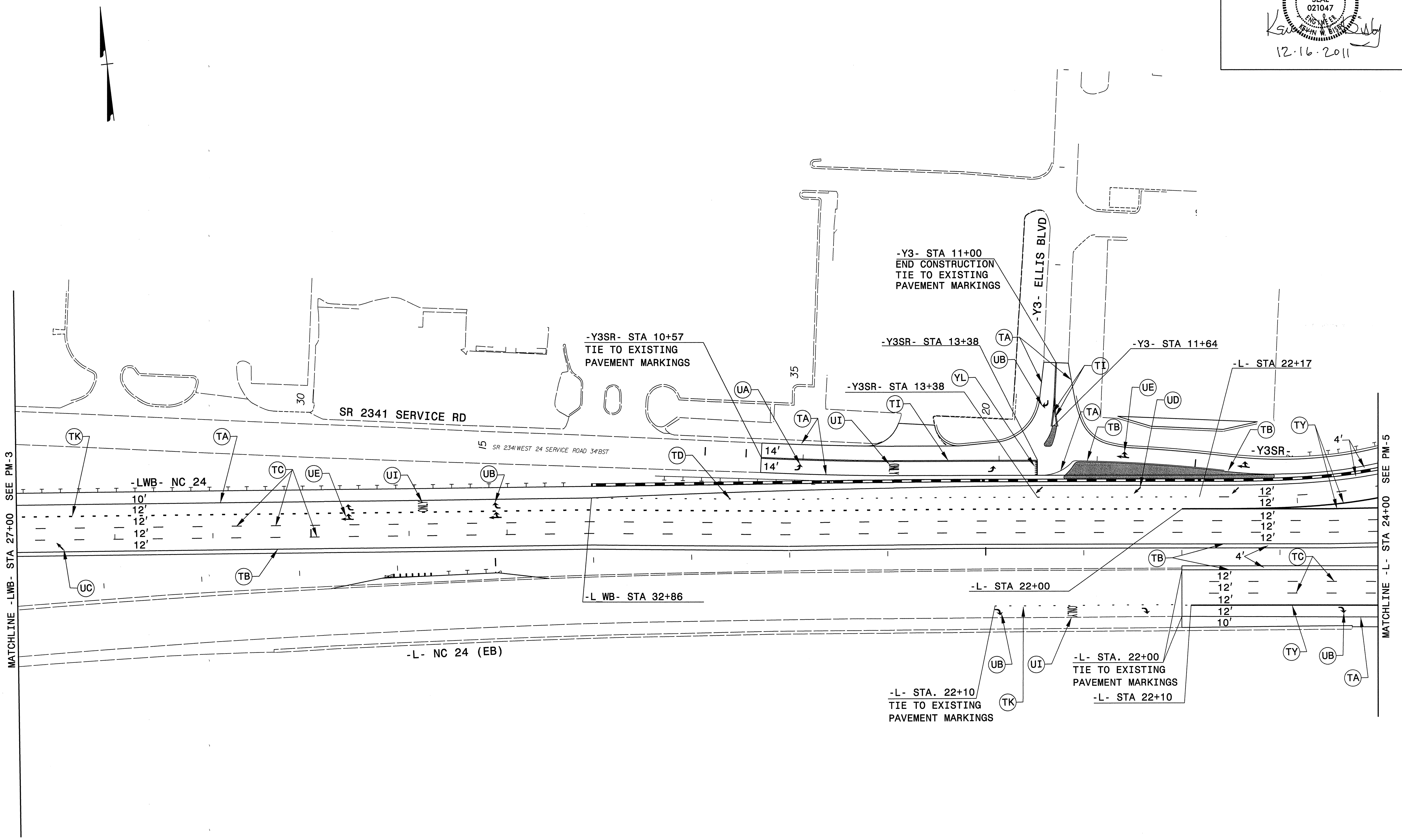
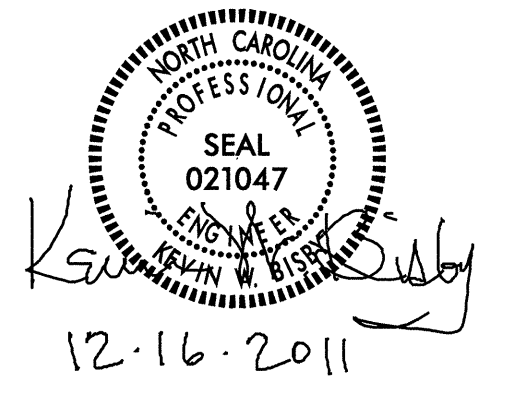
SIGNALIZED INTERSECTION

<b>PAVEMENT MARKING PLAN</b> -WB RP_BEG- STA 15+75 TO -LWB- STA 13+00	<b>PLANS PREPARED BY :</b>  RUMMEL, KLEPPER & KAHL, LLP 900 RIDGEFIELD DRIVE SUITE 350 RALEIGH, NORTH CAROLINA 27609-3960 NC LICENSE NO. F-0112 • (919) 878-9560
--	---



8/17/99  
12/14/2011  
R:\Projects\TrafficControl\PM-100\PM-100.dgn  
R:\Projects\TrafficControl\PM-100\PM-100.dgn  
R:\Projects\TrafficControl\PM-100\PM-100.dgn

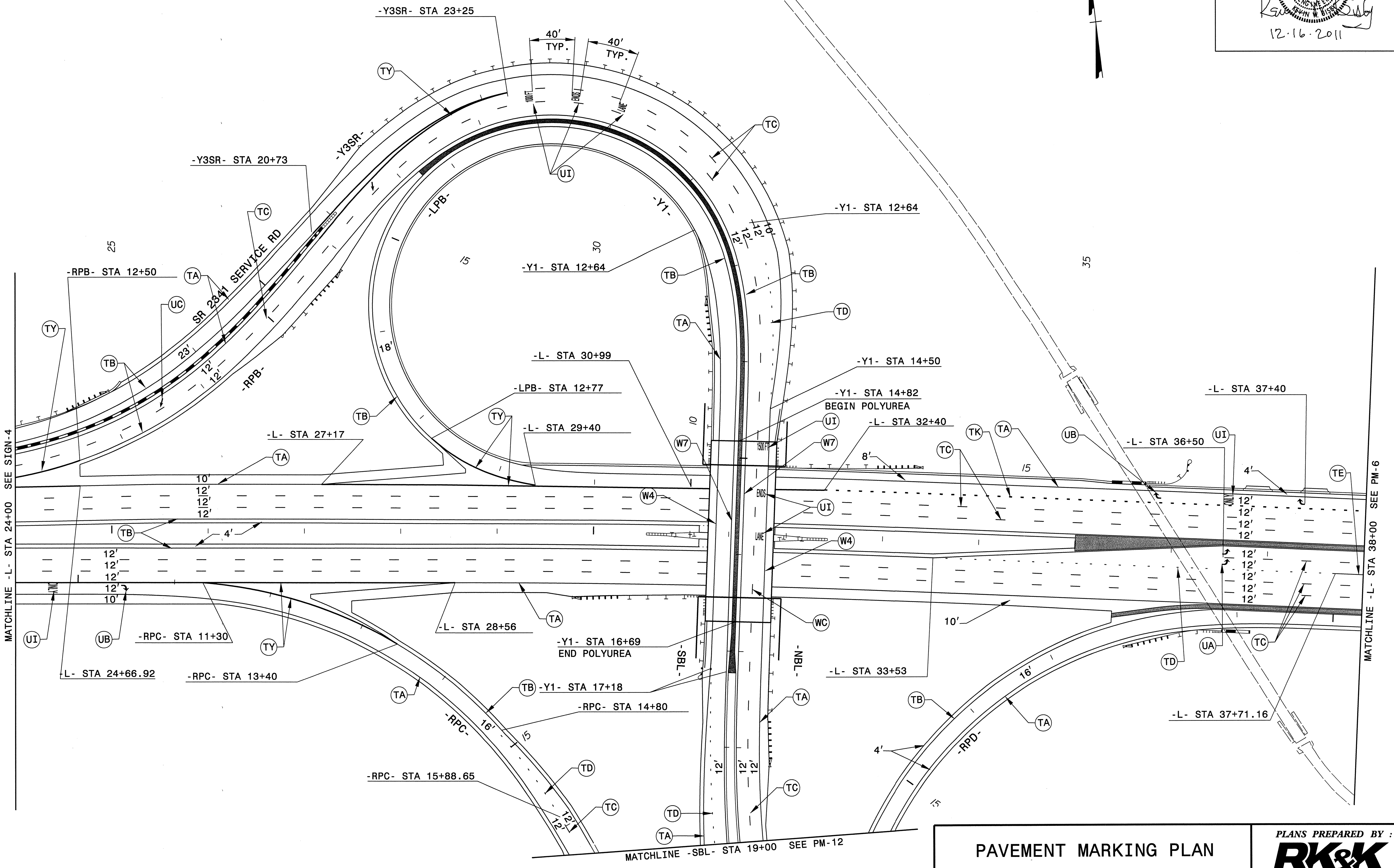
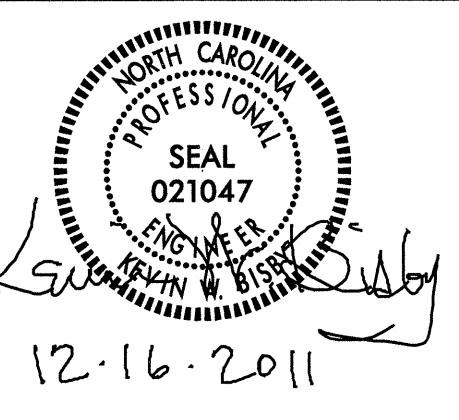
<b>PAVEMENT MARKING PLAN</b> -LWB- STA 13+00 TO -LWB- STA 27+00	<b>PLANS PREPARED BY :</b>  RUMMEL, KLEPPER & KAHL, LLP 900 RIDGEFIELD DRIVE SUITE 350 RALEIGH, NORTH CAROLINA 27609-3960 NC LICENSE NO. F-0112 • (919) 878-9560
--	---



8/17/99  
12/14/2011  
R:\TrafficControl\PM\1002\PM\U5132\_pmp\_pm04.dgn

<b>PAVEMENT MARKING PLAN</b> -LWB- STA 27+00 TO -L- STA 24+00	<b>PLANS PREPARED BY :</b>  RUMMEL, KLEPPER & KAHL, LLP 900 RIDGEFIELD DRIVE SUITE 350 RALEIGH, NORTH CAROLINA 27609-3960 NC LICENSE NO. F-0112 • (919) 878-9560
--	---

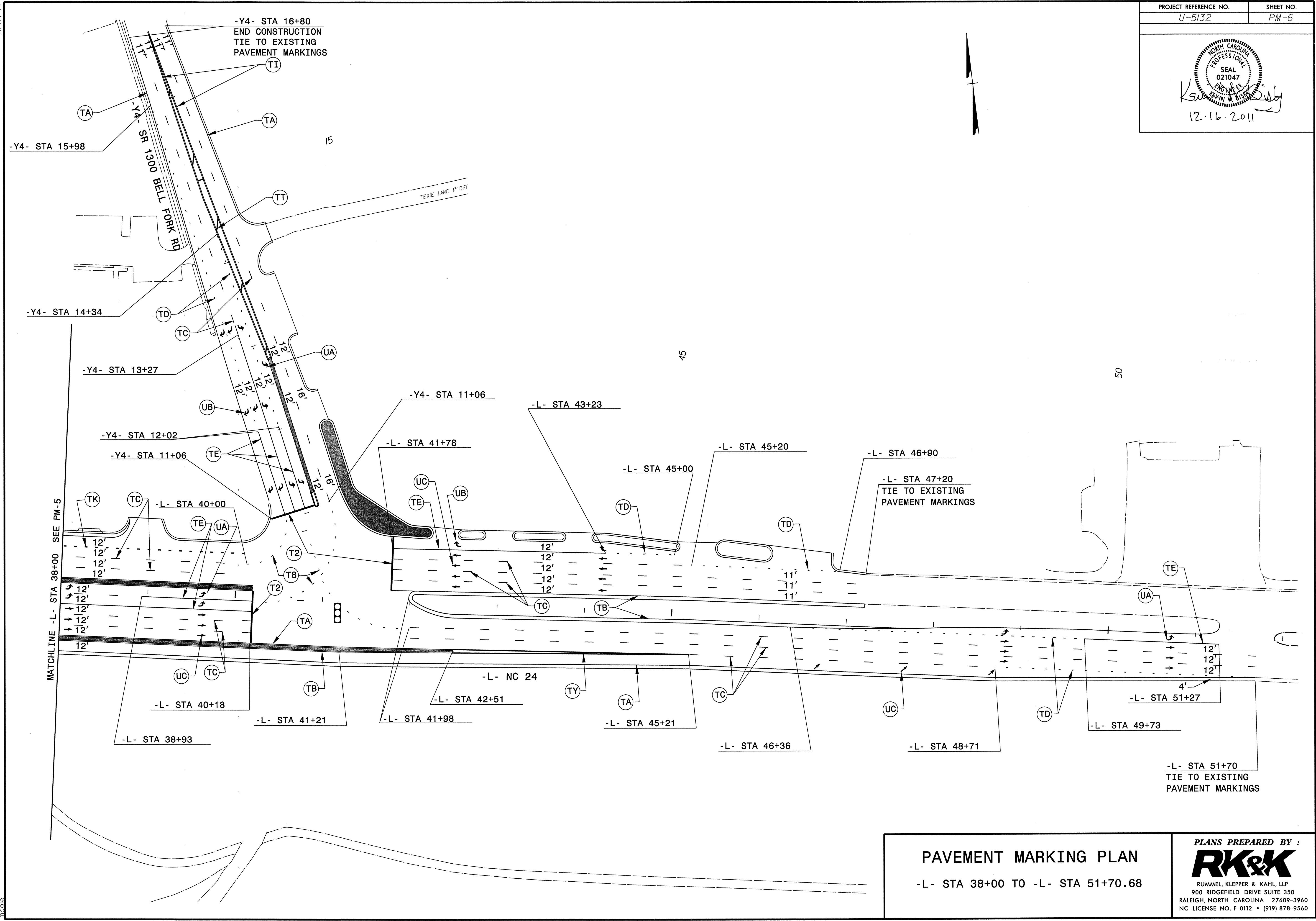
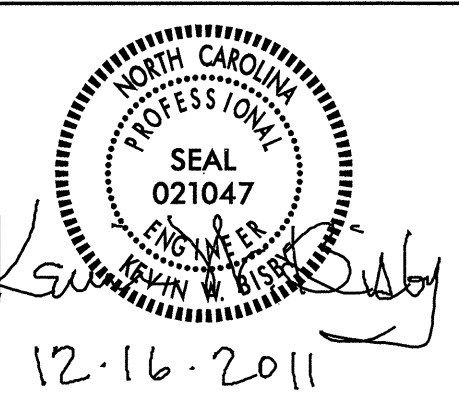




**PAVEMENT MARKING PLAN**  
-L- STA 24+00 TO -L- STA 38+00

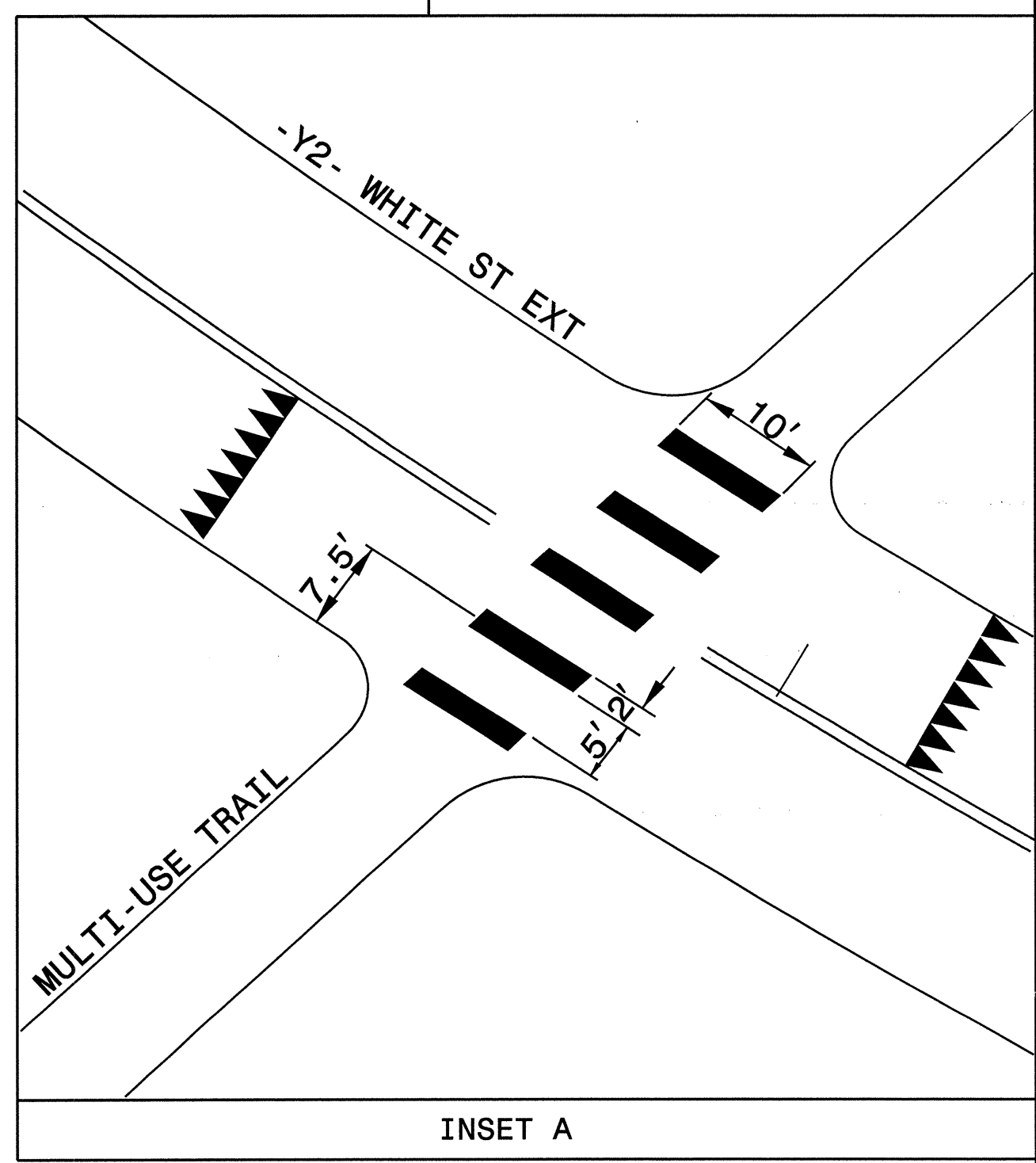
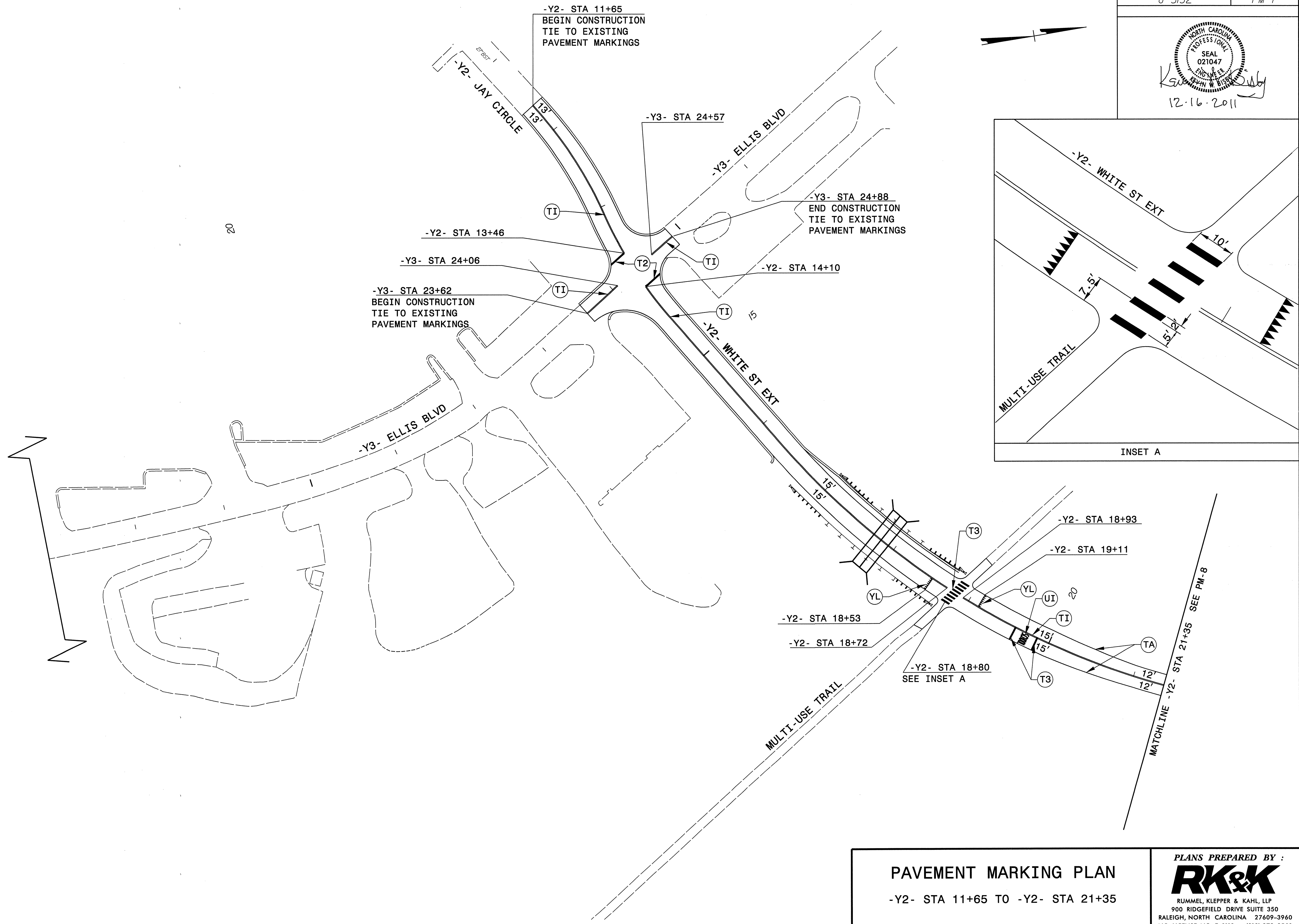
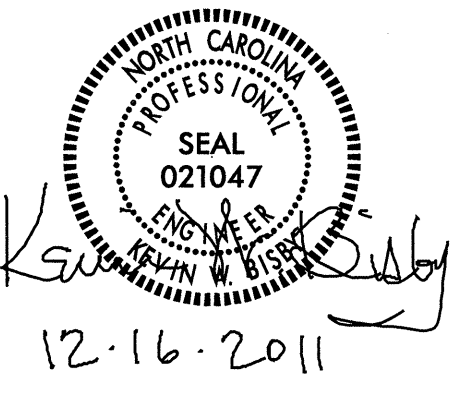
PLANS PREPARED BY :  
**RK&K**  
RUMMEL, KLEPPER & KAHL, LLP  
900 RIDGEFIELD DRIVE SUITE 350  
RALEIGH, NORTH CAROLINA 27609-3960  
NC LICENSE NO. F-0112 • (919) 878-9560

8/17/09  
12/14/2011  
C:\Users\kahl\Documents\TrafficControl\PM-5\U5132\_pmp\U5132\_pmp\_pm05.dgn



8/17/99  
R:\14\2011\TrafficControl\PM\U5132\_pmp\_pm06.dgn

<p><b>PAVEMENT MARKING PLAN</b></p> <p>-L- STA 38+00 TO -L- STA 51+70.68</p>	<p><b>PLANS PREPARED BY :</b></p> <p><b>RK&amp;K</b></p> <p>RUMMEL, KLEPPER &amp; KAHL, LLP 900 RIDGEFIELD DRIVE SUITE 350 RALEIGH, NORTH CAROLINA 27609-3960 NC LICENSE NO. F-0112 • (919) 878-9560</p>
--	--



**PAVEMENT MARKING PLAN**  
-Y2- STA 11+65 TO -Y2- STA 21+35

PLANS PREPARED BY :  
**RK&K**  
RUMMEL, KLEPPER & KAHL, LLP  
900 RIDGEFIELD DRIVE SUITE 350  
RALEIGH, NORTH CAROLINA 27609-3960  
NC LICENSE NO. F-0112 • (919) 878-9560

8/17/99  
K:\14\29\14\TrafficControl\PMF\100\PMF\U5132.pmp\_pm07.dgn  
12/16/2011 10:06:00 AM





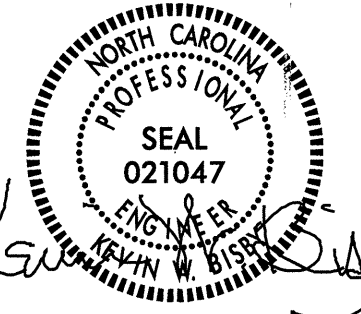


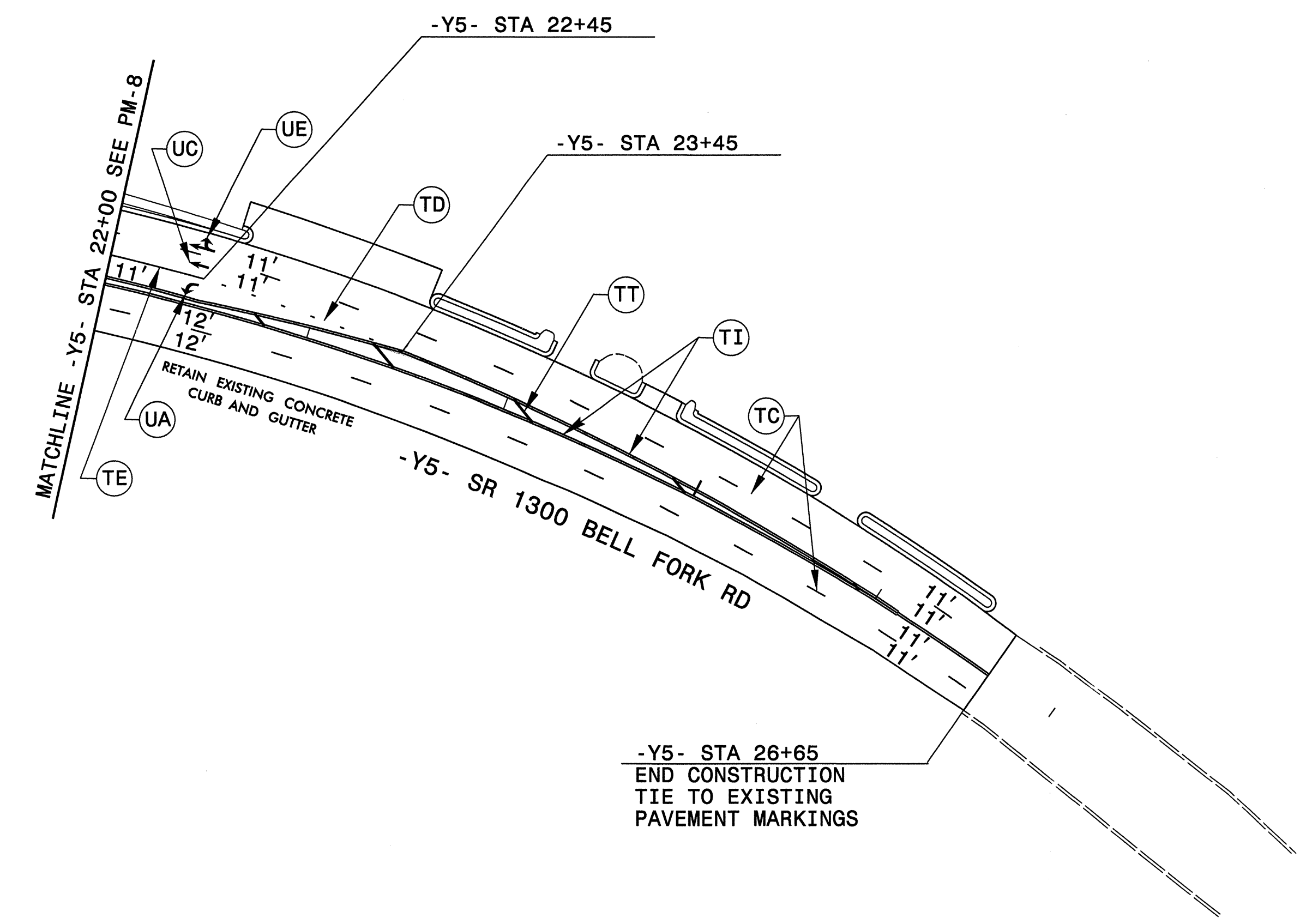




8/17/99

PROJECT REFERENCE NO.	SHEET NO.
U-5132	PM-11

  
 KWR  
 12.16.2011

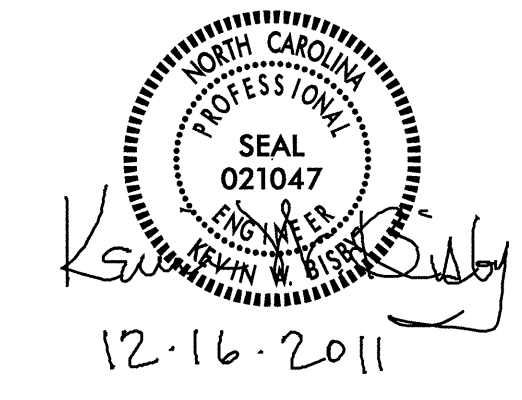


R:\Traffic\TrafficControl\PM-11\000: PMP\U5132.pmp.pml.dgn

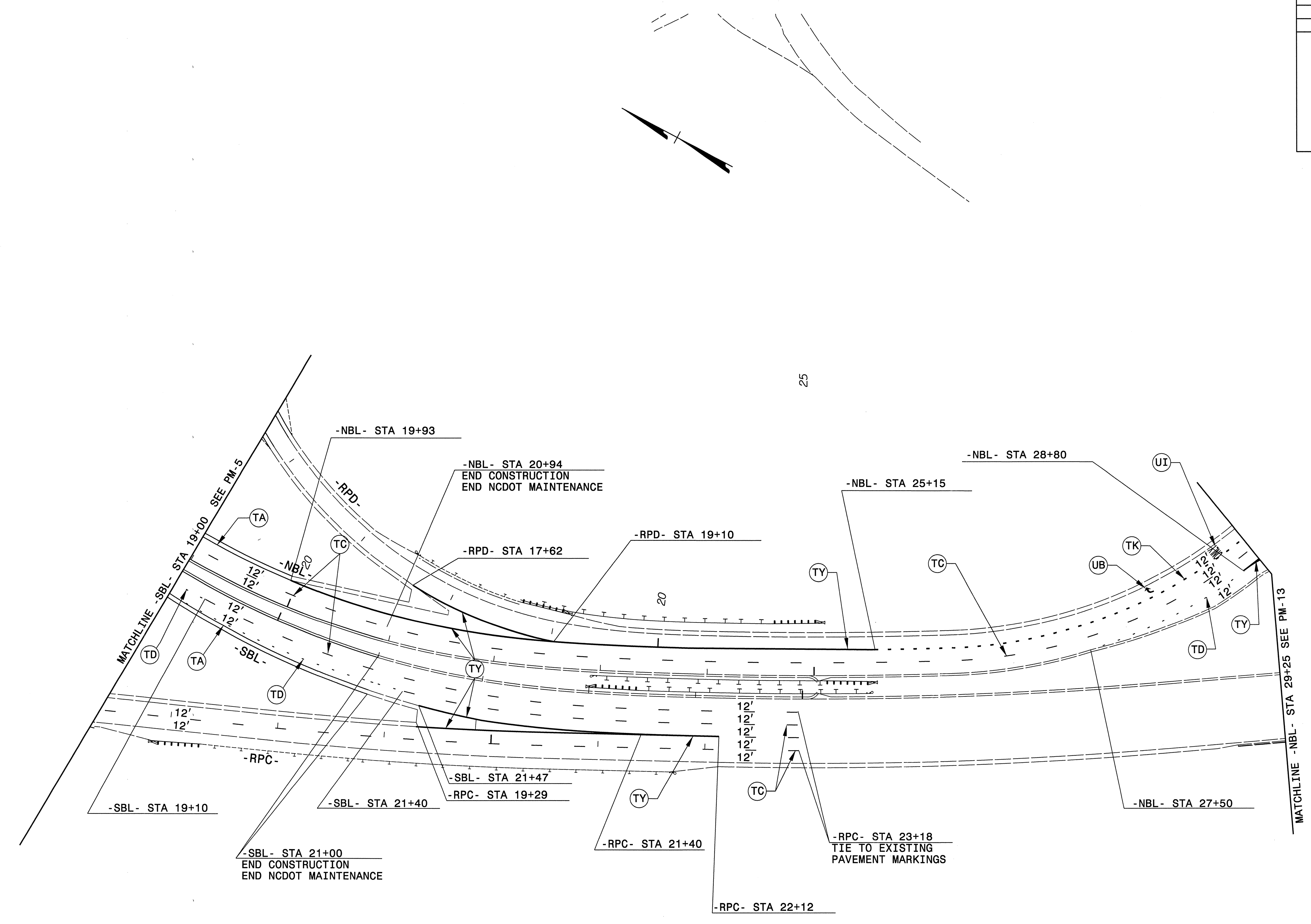
**PAVEMENT MARKING PLAN**  
 -Y5- STA 22+00 TO -Y5- STA 26+65

**PLANS PREPARED BY :**  
**RK&K**  
 RUMMEL, KLEPPER & KAHL, LLP  
 900 RIDGEFIELD DRIVE SUITE 350  
 RALEIGH, NORTH CAROLINA 27609-3960  
 NC LICENSE NO. F-0112 • (919) 878-9560





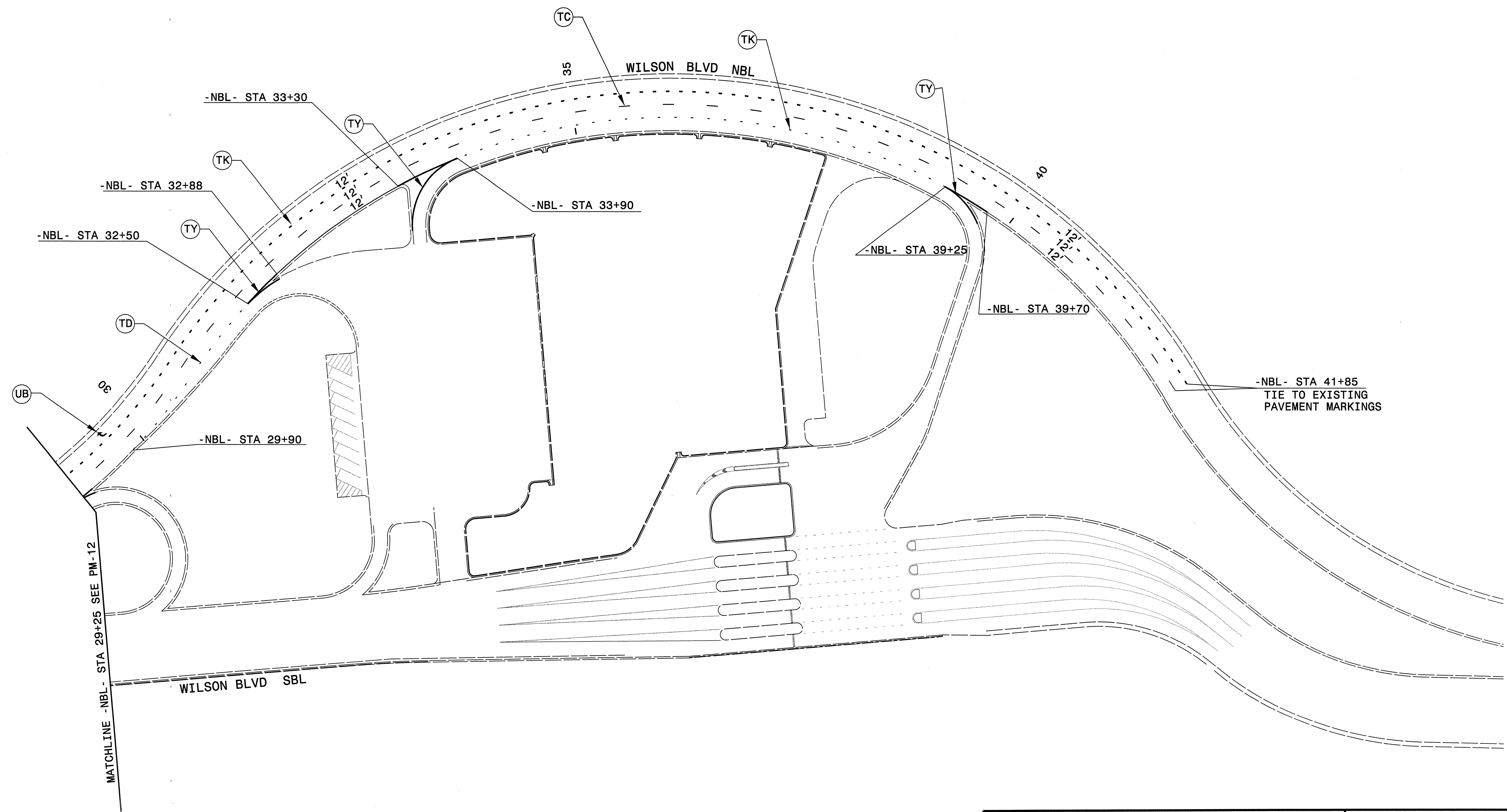
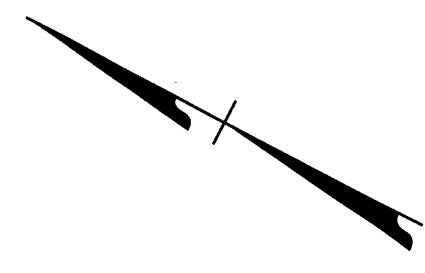
8/17/99  
K:\p2011\TrafficControl\PM-1002 S and S PMP 124201\U5132\_pmp\_pm12.dgn  
nicole



**PAVEMENT MARKING PLAN**  
-SBL- STA 19+00 TO -SBL- EXISTING

**PLANS PREPARED BY :**  
**RK&K**  
RUMMEL, KLEPPER & KAHL, LLP  
900 RIDGEFIELD DRIVE SUITE 350  
RALEIGH, NORTH CAROLINA 27609-3960  
NC LICENSE NO. F-0112 • (919) 878-9560

12.16.2011



8/17/99

K:\4\29\11\Office\TrafficControl\PM-1007.PMP\U5132.pmp\_pm3.dgn  
 12/16/11  
 mcd06

<b>PAVEMENT MARKING PLAN</b> EXISTING NBL AND SBL WILSON BLVD	<b>PLANS PREPARED BY :</b>  RUMMEL, KLEPPER & KAHL, LLP 900 RIDGEFIELD DRIVE SUITE 350 RALEIGH, NORTH CAROLINA 27609-3960 NC LICENSE NO. F-0112 • (919) 878-9560
---	---