

PROJECT: 33547.1.1 ID: B-4200

STATE OF NORTH CAROLINA
DEPARTMENT OF TRANSPORTATION
DIVISION OF HIGHWAYS
GEOTECHNICAL ENGINEERING UNIT

| STATE | STATE PROJECT REFERENCE NO. | SHEET NO. | TOTAL SHEETS |
|-------|-----------------------------|-----------|--------------|
| N.C. | 33547.1.1 (B-4200) | 1 | 10 |

CONTENTS

| SHEET | DESCRIPTION |
|-------|-------------------|
| 1 | TITLE SHEET |
| 2 | LEGEND |
| 3 | SITE PLAN |
| 4 | PROFILE |
| 5-6 | CROSS SECTIONS |
| 7-8 | BORE LOGS |
| 9 | SOIL TEST RESULTS |
| 10 | SCOUR REPORT |

STRUCTURE
SUBSURFACE INVESTIGATION

PROJ. REFERENCE NO. 33547.1.1 (B-4200) F.A. PROJ. BRSTP-2120(2)

COUNTY MECKLENBURG

PROJECT DESCRIPTION BRIDGE OVER GAR CREEK ON SR 2120
(McCOY RD.) BETWEEN SR 2074 AND SR 2117

SITE DESCRIPTION BRIDGE #100 ON SR 2120 OVER GAR CREEK

CAUTION NOTICE

THE SUBSURFACE INFORMATION AND THE SUBSURFACE INVESTIGATION ON WHICH IT IS BASED WERE MADE FOR THE PURPOSE OF STUDY, PLANNING, AND DESIGN, AND NOT FOR CONSTRUCTION OR PAY PURPOSES. THE VARIOUS FIELD BORING LOGS, ROCK CORES, AND SOIL TEST DATA AVAILABLE MAY BE REVIEWED OR INSPECTED IN RALEIGH BY CONTACTING THE N. C. DEPARTMENT OF TRANSPORTATION, GEOTECHNICAL ENGINEERING UNIT AT (919) 250-4088. NEITHER THE SUBSURFACE PLANS AND REPORTS, NOR THE FIELD BORING LOGS, ROCK CORES, OR SOIL TEST DATA ARE PART OF THE CONTRACT.

GENERAL SOIL AND ROCK STRATA DESCRIPTIONS AND INDICATED BOUNDARIES ARE BASED ON A GEOTECHNICAL INTERPRETATION OF ALL AVAILABLE SUBSURFACE DATA AND MAY NOT NECESSARILY REFLECT THE ACTUAL SUBSURFACE CONDITIONS BETWEEN BORINGS OR BETWEEN SAMPLED STRATA WITHIN THE BOREHOLE. THE LABORATORY SAMPLE DATA AND THE IN SITU (ON-PLACE) TEST DATA CAN BE RELIED ON ONLY TO THE DEGREE OF RELIABILITY INHERENT IN THE STANDARD TEST METHOD. THE OBSERVED WATER LEVELS OR SOIL MOISTURE CONDITIONS INDICATED IN THE SUBSURFACE INVESTIGATIONS ARE AS RECORDED AT THE TIME OF THE INVESTIGATION. THESE WATER LEVELS OR SOIL MOISTURE CONDITIONS MAY VARY CONSIDERABLY WITH TIME ACCORDING TO CLIMATIC CONDITIONS INCLUDING TEMPERATURES, PRECIPITATION, AND WIND, AS WELL AS OTHER NON-CLIMATIC FACTORS.

THE BIDDER OR CONTRACTOR IS CAUTIONED THAT DETAILS SHOWN ON THE SUBSURFACE PLANS ARE PRELIMINARY ONLY AND IN MANY CASES THE FINAL DESIGN DETAILS ARE DIFFERENT. FOR BIDDING AND CONSTRUCTION PURPOSES, REFER TO THE CONSTRUCTION PLANS AND DOCUMENTS FOR FINAL DESIGN INFORMATION ON THIS PROJECT. THE DEPARTMENT DOES NOT WARRANT OR GUARANTEE THE SUFFICIENCY OR ACCURACY OF THE INVESTIGATION MADE, NOR THE INTERPRETATIONS MADE, OR OPINION OF THE DEPARTMENT AS TO THE TYPE OF MATERIALS AND CONDITIONS TO BE ENCOUNTERED. THE BIDDER OR CONTRACTOR IS CAUTIONED TO MAKE SUCH INDEPENDENT SUBSURFACE INVESTIGATIONS AS HE DEEMS NECESSARY TO SATISFY HIMSELF AS TO CONDITIONS TO BE ENCOUNTERED ON THIS PROJECT. THE CONTRACTOR SHALL HAVE NO CLAIM FOR ADDITIONAL COMPENSATION OR FOR AN EXTENSION OF TIME FOR ANY REASON RESULTING FROM THE ACTUAL CONDITIONS ENCOUNTERED AT THE SITE DIFFERING FROM THOSE INDICATED IN THE SUBSURFACE INFORMATION.

PERSONNEL

J. K. STICKNEY

C. L. SMITH

M. R. MOORE

INVESTIGATED BY J. E. BEVERLY

CHECKED BY C. B. LITTLE

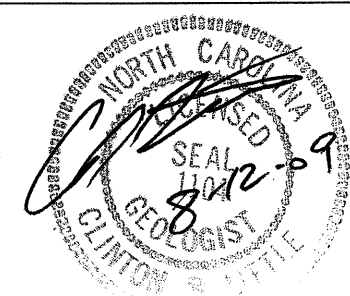
SUBMITTED BY C. B. LITTLE

DATE JULY, 2009

DRAWN BY: J. E. ROLFSMEYER

NOTE - THE INFORMATION CONTAINED HEREIN IS NOT IMPLIED OR GUARANTEED BY THE N. C. DEPARTMENT OF TRANSPORTATION AS BEING ACCURATE NOR IT IS CONSIDERED TO BE PART OF THE PLANS, SPECIFICATIONS, OR CONTRACT FOR THE PROJECT.

NOTE - BY HAVING REQUESTED THIS INFORMATION THE CONTRACTOR SPECIFICALLY WAIVES ANY CLAIMS FOR INCREASED COMPENSATION OR EXTENSION OF TIME BASED ON DIFFERENCES BETWEEN THE CONDITIONS INDICATED HEREIN AND THE ACTUAL CONDITIONS AT THE PROJECT SITE.



NORTH CAROLINA DEPARTMENT OF TRANSPORTATION
DIVISION OF HIGHWAYS
GEOTECHNICAL ENGINEERING UNIT

SUBSURFACE INVESTIGATION

SOIL AND ROCK LEGEND, TERMS, SYMBOLS, AND ABBREVIATIONS

| SOIL DESCRIPTION | GRADATION | ROCK DESCRIPTION | TERMS AND DEFINITIONS |
|---|--|--|---|
| SOIL IS CONSIDERED TO BE THE UNCONSOLIDATED, SEMI-CONSOLIDATED, OR WEATHERED EARTH MATERIALS THAT CAN BE PENETRATED WITH A CONTINUOUS FLIGHT POWER AUGER, AND YIELD LESS THAN 100 BLOWS PER FOOT ACCORDING TO STANDARD PENETRATION TEST (AASHTO T206, ASTM D-1586). SOIL CLASSIFICATION IS BASED ON THE AASHTO SYSTEM. BASIC DESCRIPTIONS GENERALLY SHALL INCLUDE: CONSISTENCY, COLOR, TEXTURE, MOISTURE, AASHTO CLASSIFICATION, AND OTHER PERTINENT FACTORS SUCH AS MINERALOGICAL COMPOSITION, ANGULARITY, STRUCTURE, PLASTICITY, ETC. EXAMPLE: <i>VERY STIFF, DARK SILTY CLAY, MOST WITH INTERBEDDED FINE SAND LAYERS, HIGH PLASTIC, A-7-6</i> | WELL GRADED - INDICATES A GOOD REPRESENTATION OF PARTICLE SIZES FROM FINE TO COARSE. UNIFORM - INDICATES THAT SOIL PARTICLES ARE ALL APPROXIMATELY THE SAME SIZE. (ALSO POORLY GRADED) POORLY GRADED - INDICATES A MIXTURE OF UNIFORM PARTICLES OF TWO OR MORE SIZES. ANGULARITY OF GRAINS THE ANGULARITY OR ROUNDNESS OF SOIL GRAINS IS DESIGNATED BY THE TERMS: <u>ANGULAR</u> , <u>SUBANGULAR</u> , <u>SUBROUNDED</u> , OR <u>ROUNDED</u> . | HARD ROCK IS NON-COASTAL PLAIN MATERIAL THAT IF TESTED, WOULD YIELD SPT REFUSAL, AN INFERRED ROCK LINE INDICATES THE LEVEL AT WHICH NON-COASTAL PLAIN MATERIAL WOULD YIELD SPT REFUSAL. SPT REFUSAL IS PENETRATION BY A SPLIT SPOON SAMPLER EQUAL TO OR LESS THAN 0.1 FOOT PER 60 BLOWS. IN NON-COASTAL PLAIN MATERIAL, THE TRANSITION BETWEEN SOIL AND ROCK IS OFTEN REPRESENTED BY A ZONE OF WEATHERED ROCK. ROCK MATERIALS ARE TYPICALLY DIVIDED AS FOLLOWS: WEATHERED ROCK (WR) - NON-COASTAL PLAIN MATERIAL THAT WOULD YIELD SPT N VALUES > 100 BLOWS PER FOOT IF TESTED. CRYSTALLINE ROCK (CR) - FINE TO COARSE GRAIN IGNEOUS AND METAMORPHIC ROCK THAT WOULD YIELD SPT REFUSAL IF TESTED. ROCK TYPE INCLUDES GRANITE, GNEISS, GABBRO, SCHIST, ETC. NON-CRYSTALLINE ROCK (NCR) - FINE TO COARSE GRAIN METAMORPHIC AND NON-COASTAL PLAIN SEDIMENTARY ROCK THAT WOULD YIELD SPT REFUSAL IF TESTED. ROCK TYPE INCLUDES PHYLLITE, SLATE, SANDSTONE, ETC. COASTAL PLAIN SEDIMENTARY ROCK (CP) - COASTAL PLAIN SEDIMENTS CEMENTED INTO ROCK, BUT MAY NOT YIELD SPT REFUSAL. ROCK TYPE INCLUDES LIMESTONE, SANDSTONE, CEMENTED SHELL BEDS, ETC. | ALLUVIUM (ALLUV.) - SOILS THAT HAVE BEEN TRANSPORTED BY WATER. AQUIFER - A WATER BEARING FORMATION OR STRATA. ARENACEOUS - APPLIED TO ROCKS THAT HAVE BEEN DERIVED FROM SAND OR THAT CONTAIN SAND. ARGILLACEOUS - APPLIED TO ALL ROCKS OR SUBSTANCES COMPOSED OF CLAY MINERALS, OR HAVING A NOTABLE PROPORTION OF CLAY IN THEIR COMPOSITION, AS SHALE, SLATE, ETC. ARTESIAN - GROUND WATER THAT IS UNDER SUFFICIENT PRESSURE TO RISE ABOVE THE LEVEL AT WHICH IT IS ENCOUNTERED, BUT WHICH DOES NOT NECESSARILY RISE TO OR ABOVE THE GROUND SURFACE. CALCAREOUS (CALC.) - SOILS THAT CONTAIN APPRECIABLE AMOUNTS OF CALCIUM CARBONATE. COLLUVIUM - ROCK FRAGMENTS MIXED WITH SOIL DEPOSITED BY GRAVITY ON SLOPE OR AT BOTTOM OF SLOPE. CORE RECOVERY (REC.) - TOTAL LENGTH OF ALL MATERIAL RECOVERED IN THE CORE BARREL DIVIDED BY TOTAL LENGTH OF CORE RUN AND EXPRESSED AS A PERCENTAGE. DIKE - A TABULAR BODY OF IGNEOUS ROCK THAT CUTS ACROSS THE STRUCTURE OF ADJACENT ROCKS OR CUTS MASSIVE ROCK. DIP - THE ANGLE AT WHICH A STRATUM OR ANY PLANAR FEATURE IS INCLINED FROM THE HORIZONTAL. DIP DIRECTION (DIP AZIMUTH) - THE DIRECTION OR BEARING OF THE HORIZONTAL TRACE OF THE LINE OF DIP, MEASURED CLOCKWISE FROM NORTH. FAULT - A FRACTURE OR FRACTURE ZONE ALONG WHICH THERE HAS BEEN DISPLACEMENT OF THE SIDES RELATIVE TO ONE ANOTHER PARALLEL TO THE FRACTURE. FISSILE - A PROPERTY OF SPLITTING ALONG CLOSELY SPACED PARALLEL PLANES. FLOAT - ROCK FRAGMENTS ON SURFACE NEAR THEIR ORIGINAL POSITION AND DISLODGED FROM PARENT MATERIAL. FLOOD PLAIN (FP) - LAND BORDERING A STREAM, BUILT OF SEDIMENTS DEPOSITED BY THE STREAM. FORMATION (FM.) - A MAPPABLE GEOLOGIC UNIT THAT CAN BE RECOGNIZED AND TRACED IN THE FIELD. JOINT - FRACTURE IN ROCK ALONG WHICH NO APPRECIABLE MOVEMENT HAS OCCURRED. LEDGE - A SHELF-LIKE RIDGE OR PROJECTION OF ROCK WHOSE THICKNESS IS SMALL COMPARED TO ITS LATERAL EXTENT. LENS - A BODY OF SOIL OR ROCK THAT THINS OUT IN ONE OR MORE DIRECTIONS. MOTTLED (MOT.) - IRREGULARLY MARKED WITH SPOTS OF DIFFERENT COLORS. MOTTLING IN SOILS USUALLY INDICATES POOR AERATION AND LACK OF GOOD DRAINAGE. PERCHED WATER - WATER MAINTAINED ABOVE THE NORMAL GROUND WATER LEVEL BY THE PRESENCE OF AN INTERVENING IMPERVIOUS STRATUM. RESIDUAL (RES.) SOIL - SOIL FORMED IN PLACE BY THE WEATHERING OF ROCK. ROCK QUALITY DESIGNATION (RQD) - A MEASURE OF ROCK QUALITY DESCRIBED BY TOTAL LENGTH OF ROCK SEGMENTS EQUAL TO OR GREATER THAN 4 INCHES DIVIDED BY THE TOTAL LENGTH OF CORE RUN AND EXPRESSED AS A PERCENTAGE. SAPROLITE (SAP.) - RESIDUAL SOIL THAT RETAINS THE RELIC STRUCTURE OR FABRIC OF THE PARENT ROCK. SILL - AN INTRUSIVE BODY OF IGNEOUS ROCK OF APPROXIMATELY UNIFORM THICKNESS AND RELATIVELY THIN COMPARED WITH ITS LATERAL EXTENT, THAT HAS BEEN EMPLACED PARALLEL TO THE BEDDING OR SCHISTOSITY OF THE INTRODUCED ROCKS. SLICKENSIDE - POLISHED AND STRIATED SURFACE THAT RESULTS FROM FRICTION ALONG A FAULT OR SLIP PLANE. STANDARD PENETRATION TEST (PENETRATION RESISTANCE) (SPT) - NUMBER OF BLOWS (N OR BPF) OF A 140 LB. HAMMER FALLING 30 INCHES REQUIRED TO PRODUCE A PENETRATION OF 1 FOOT INTO SOIL WITH A 2 INCH OUTSIDE DIAMETER SPLIT SPOON SAMPLER. SPT REFUSAL IS PENETRATION EQUAL TO OR LESS THAN 0.1 FOOT PER 60 BLOWS. STRATA CORE RECOVERY (SREC.) - TOTAL LENGTH OF STRATA MATERIAL RECOVERED DIVIDED BY TOTAL LENGTH OF STRATUM AND EXPRESSED AS A PERCENTAGE. STRATA ROCK QUALITY DESIGNATION (SRQD) - A MEASURE OF ROCK QUALITY DESCRIBED BY TOTAL LENGTH OF ROCK SEGMENTS WITHIN A STRATUM EQUAL TO OR GREATER THAN 4 INCHES DIVIDED BY THE TOTAL LENGTH OF STRATA AND EXPRESSED AS A PERCENTAGE. TOPSOIL (TS.) - SURFACE SOILS USUALLY CONTAINING ORGANIC MATTER. |
| SOIL LEGEND AND AASHTO CLASSIFICATION | MINERALOGICAL COMPOSITION | WEATHERING | |
| GENERAL CLASS. GRANULAR MATERIALS (<= 35% PASSING #200) SILT-CLAY MATERIALS (> 35% PASSING #200) ORGANIC MATERIALS | MINERAL NAMES SUCH AS QUARTZ, FELDSPAR, MICA, TALC, KAOLIN, ETC. ARE USED IN DESCRIPTIONS WHENEVER THEY ARE CONSIDERED OF SIGNIFICANCE. | FRESH - ROCK FRESH, CRYSTALS BRIGHT, FEW JOINTS MAY SHOW SLIGHT STAINING, ROCK RINGS UNDER HAMMER IF CRYSTALLINE. VERY SLIGHT (V SL.) - ROCK GENERALLY FRESH, JOINTS STAINED, SOME JOINTS MAY SHOW THIN CLAY COATINGS IF OPEN, CRYSTALS ON A BROKEN SPECIMEN FACE SHINE BRIGHTLY. ROCK RINGS UNDER HAMMER BLOWS IF OF A CRYSTALLINE NATURE. SLIGHT (SL.) - ROCK GENERALLY FRESH, JOINTS STAINED AND DISCOLORATION EXTENDS INTO ROCK UP TO 1 INCH. OPEN JOINTS MAY CONTAIN CLAY. IN GRANITOID ROCKS SOME OCCASIONAL FELDSPAR CRYSTALS ARE DULL AND DISCOLORED. CRYSTALLINE ROCKS RING UNDER HAMMER BLOWS. MODERATE (MOD.) - SIGNIFICANT PORTIONS OF ROCK SHOW DISCOLORATION AND WEATHERING EFFECTS. IN GRANITOID ROCKS, MOST FELDSPARS ARE DULL AND DISCOLORED, SOME SHOW CLAY. ROCK HAS DULL SOUND UNDER HAMMER BLOWS AND SHOWS SIGNIFICANT LOSS OF STRENGTH AS COMPARED WITH FRESH ROCK. MODERATELY SEVERE (MOD. SEV.) - ALL ROCK EXCEPT QUARTZ DISCOLORED OR STAINED. IN GRANITOID ROCKS, ALL FELDSPARS DULL AND DISCOLORED AND A MAJORITY SHOW KAOLINIZATION. ROCK SHOWS SEVERE LOSS OF STRENGTH AND CAN BE EXCAVATED WITH A GEOLOGIST'S PICK. ROCK GIVES "CLUNK" SOUND WHEN STRUCK. <i>IF TESTED, WOULD YIELD SPT REFUSAL</i> SEVERE (SEV.) - ALL ROCK EXCEPT QUARTZ DISCOLORED OR STAINED. ROCK FABRIC CLEAR AND EVIDENT BUT REDUCED IN STRENGTH TO STRONG SOIL. IN GRANITOID ROCKS ALL FELDSPARS ARE KAOLINIZED TO SOME EXTENT. SOME FRAGMENTS OF STRONG ROCK USUALLY REMAIN. <i>IF TESTED, YIELDS SPT N VALUES < 100 BPF</i> VERY SEVERE (V SEV.) - ALL ROCK EXCEPT QUARTZ DISCOLORED OR STAINED. ROCK FABRIC ELEMENTS ARE DISCERNIBLE BUT THE MASS IS EFFECTIVELY REDUCED TO SOIL STATUS, WITH ONLY FRAGMENTS OF STRONG ROCK REMAINING. SAPROLITE IS AN EXAMPLE OF ROCK WEATHERED TO A DEGREE SUCH THAT ONLY MINOR VESTIGES OF THE ORIGINAL ROCK FABRIC REMAIN. <i>IF TESTED, YIELDS SPT N VALUES < 100 BPF</i> COMPLETE - ROCK REDUCED TO SOIL. ROCK FABRIC NOT DISCERNIBLE, OR DISCERNIBLE ONLY IN SMALL AND SCATTERED CONCENTRATIONS. QUARTZ MAY BE PRESENT AS DIKES OR STRINGERS. SAPROLITE IS ALSO AN EXAMPLE. | |
| COMPRESSIBILITY SLIGHTLY COMPRESSIBLE MODERATELY COMPRESSIBLE HIGHLY COMPRESSIBLE | PERCENTAGE OF MATERIAL ORGANIC MATERIAL TRACE OF ORGANIC MATTER 2 - 3% LITTLE ORGANIC MATTER 3 - 5% MODERATELY ORGANIC 5 - 10% HIGHLY ORGANIC >10% SILT - CLAY SOILS 3 - 5% 5 - 12% 12 - 20% >20% OTHER MATERIAL TRACE 1 - 10% LITTLE 10 - 20% SOME 20 - 35% HIGHLY 35% AND ABOVE | WEATHERING | |
| GROUND WATER WATER LEVEL IN BORE HOLE IMMEDIATELY AFTER DRILLING STATIC WATER LEVEL AFTER 24 HOURS PERCHED WATER, SATURATED ZONE, OR WATER BEARING STRATA SPRING OR SEEP | MISCELLANEOUS SYMBOLS ROADWAY EMBANKMENT (RE) WITH SOIL DESCRIPTION SOIL SYMBOL ARTIFICIAL FILL (AF) OTHER THAN ROADWAY EMBANKMENT INFERRED SOIL BOUNDARY INFERRED ROCK LINE ALLUVIAL SOIL BOUNDARY DIP & DIP DIRECTION OF ROCK STRUCTURES SOUNDING ROD SPT TEST BORING AUGER BORING CORE BORING MONITORING WELL PIEZOMETER INSTALLATION SLOPE INDICATOR INSTALLATION SPT N-VALUE SPT REFUSAL | ROCK HARDNESS VERY HARD - CANNOT BE SCRATCHED BY KNIFE OR SHARP PICK. BREAKING OF HAND SPECIMENS REQUIRES SEVERAL HARD BLOWS OF THE GEOLOGIST'S PICK. HARD - CAN BE SCRATCHED BY KNIFE OR PICK ONLY WITH DIFFICULTY. HARD HAMMER BLOWS REQUIRED TO DETACH HAND SPECIMEN. MODERATELY HARD - CAN BE SCRATCHED BY KNIFE OR PICK. GOUGES OR GROOVES TO 0.25 INCHES DEEP CAN BE EXCAVATED BY HARD BLOW OF A GEOLOGIST'S PICK. HAND SPECIMENS CAN BE DETACHED BY MODERATE BLOWS. MEDIUM HARD - CAN BE GROOVED OR GOUGED 0.05 INCHES DEEP BY FIRM PRESSURE OF KNIFE OR PICK POINT. CAN BE EXCAVATED IN SMALL CHIPS TO PEICES 1 INCH MAXIMUM SIZE BY HARD BLOWS OF THE POINT OF A GEOLOGIST'S PICK. SOFT - CAN BE GROOVED OR GOUGED READILY BY KNIFE OR PICK. CAN BE EXCAVATED IN FRAGMENTS FROM CHIPS TO SEVERAL INCHES IN SIZE BY MODERATE BLOWS OF A PICK POINT. SMALL, THIN PIECES CAN BE BROKEN BY FINGER PRESSURE. VERY SOFT - CAN BE CARVED WITH KNIFE. CAN BE EXCAVATED READILY WITH POINT OF PICK. PIECES 1 INCH OR MORE IN THICKNESS CAN BE BROKEN BY FINGER PRESSURE. CAN BE SCRATCHED READILY BY FINGERNAIL. | |
| CONSISTENCY OR DENSENESS | ABBREVIATIONS AR - AUGER REFUSAL BT - BORING TERMINATED CL - CLAY CPT - CONE PENETRATION TEST CSE - COARSE DMT - DILATOMETER TEST DPT - DYNAMIC PENETRATION TEST F - FINE FOSS. - FOSSILIFEROUS FRAC. - FRACTURED, FRACTURES FRAGS. - FRAGMENTS HL - HIGHLY MED. - MEDIUM MICA - MICACEOUS MOD. - MODERATELY NP - NON PLASTIC ORG. - ORGANIC PMT - PRESSUREMETER TEST SAP. - SAPROLITIC SD. - SAND, SANDY SL. - SILT, SILTY SLI. - SLIGHTLY TCR - TRICONE REFUSAL # - MOISTURE CONTENT V - VERY VST - VANE SHEAR TEST WEA. - WEATHERED % - UNIT WEIGHT % - DRY UNIT WEIGHT | | |
| TEXTURE OR GRAIN SIZE | | | |
| SOIL MOISTURE - CORRELATION OF TERMS | | | |
| PLASTICITY | | | |
| COLOR | | | |
| EQUIPMENT USED ON SUBJECT PROJECT | FRACTURE SPACING | BEDDING | |
| INDURATION | | | |
| NOTES: | | | |



OLD HOMEPLACE LIMITED PARTNERSHIP
DB 8731 PG 409

BEGIN STATE PROJECT B-4200 -L- STA. 13+25.00

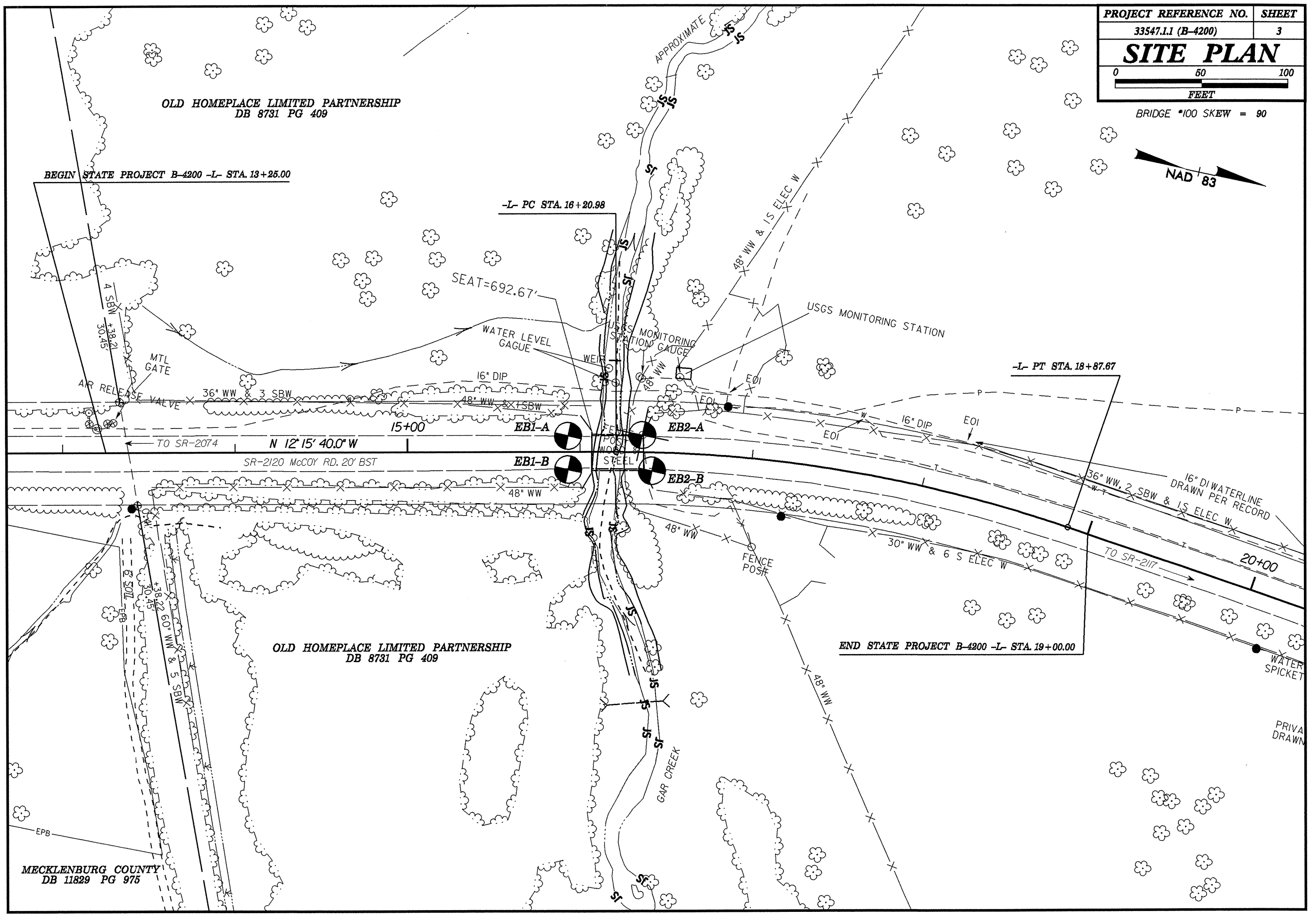
-L- PC STA. 16+20.98

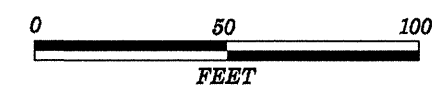
-L- PT STA. 18+87.67

END STATE PROJECT B-4200 -L- STA. 19+00.00

OLD HOMEPLACE LIMITED PARTNERSHIP
DB 8731 PG 409

MECKLENBURG COUNTY
DB 11829 PG 975

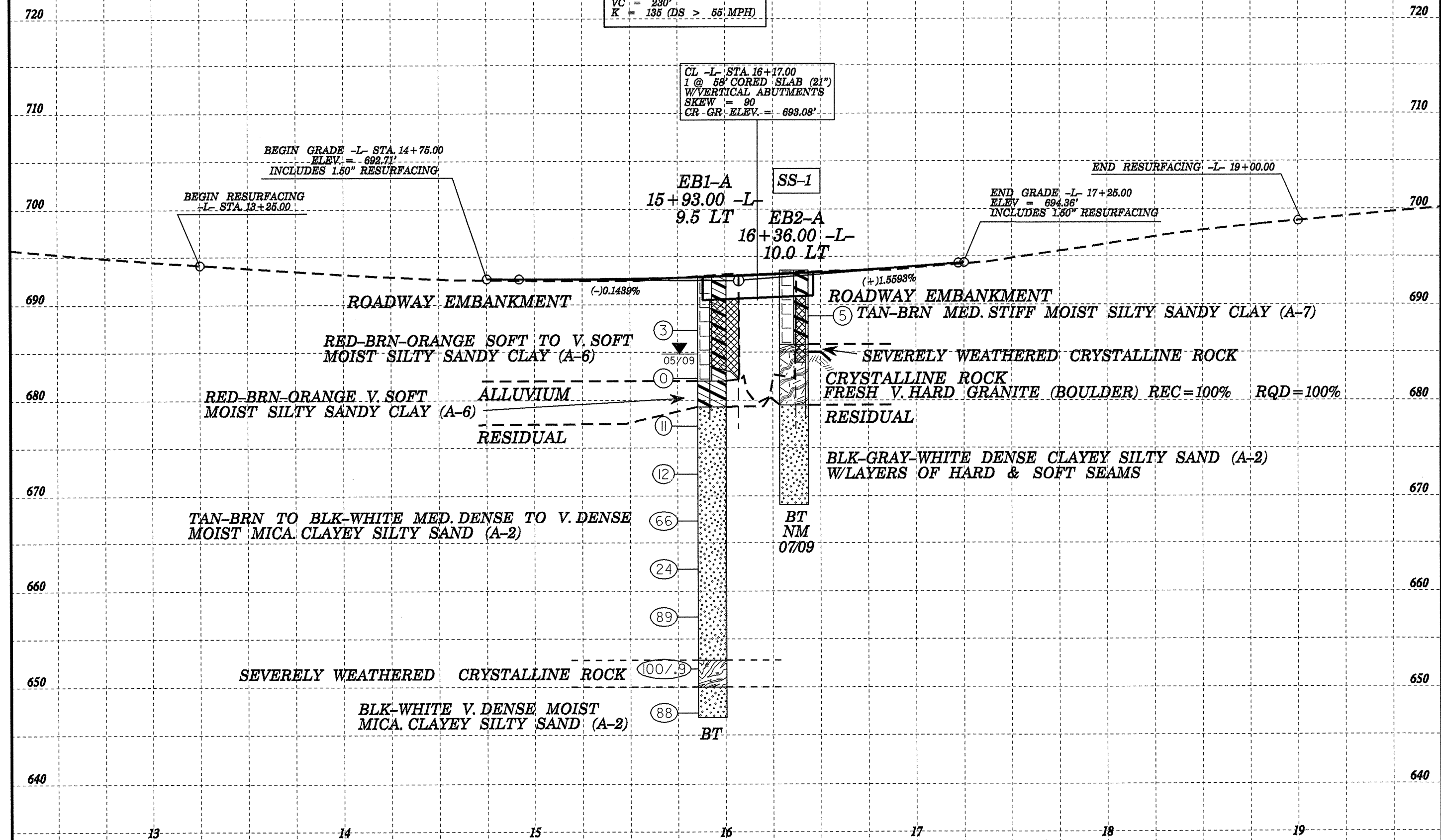




BM2 ELEV. = 692.34'
N 593144 E 1437742
-BL- STATION 13+07.00 27.0' RT.
-L- STATION 16+05.88 14.67' RT.
RR SPIKE IN BASE OF 18" PINE

PI = 16+07.00
ELEV. = 692.52'
VC = 230'
K = 135 (DS > 55 MPH)

-L- PROFILE



CL -L- STA. 16+17.00
1 @ 58' CORED SLAB (21")
W/VERTICAL ABUTMENTS
SKEW = 90
CR GR ELEV. = 693.08'

BEGIN GRADE -L- STA. 14+75.00
ELEV. = 692.71'
INCLUDES 1.50" RESURFACING

BEGIN RESURFACING
-L- STA. 13+25.00

END GRADE -L- STA. 17+25.00
ELEV. = 694.36'
INCLUDES 1.50" RESURFACING

END RESURFACING -L- 19+00.00

EB1-A
15+93.00 -L-
9.5 LT

SS-1
EB2-A
16+36.00 -L-
10.0 LT

(-)0.1439%

(+)1.5593%

RED-BRN-ORANGE SOFT TO V. SOFT
MOIST SILTY SANDY CLAY (A-6)

RED-BRN-ORANGE V. SOFT
MOIST SILTY SANDY CLAY (A-6)

ROADWAY EMBANKMENT
⑤ TAN-BRN MED. STIFF MOIST SILTY SANDY CLAY (A-7)

SEVERELY WEATHERED CRYSTALLINE ROCK

CRYSTALLINE ROCK
FRESH V. HARD GRANITE (BOULDER) REC=100% RQD=100%

RESIDUAL

BLK-GRAY-WHITE DENSE CLAYEY SILTY SAND (A-2)
W/LAYERS OF HARD & SOFT SEAMS

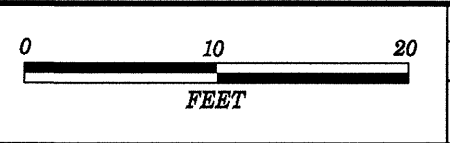
TAN-BRN TO BLK-WHITE MED. DENSE TO V. DENSE
MOIST MICA CLAYEY SILTY SAND (A-2)

BT
NM
0709

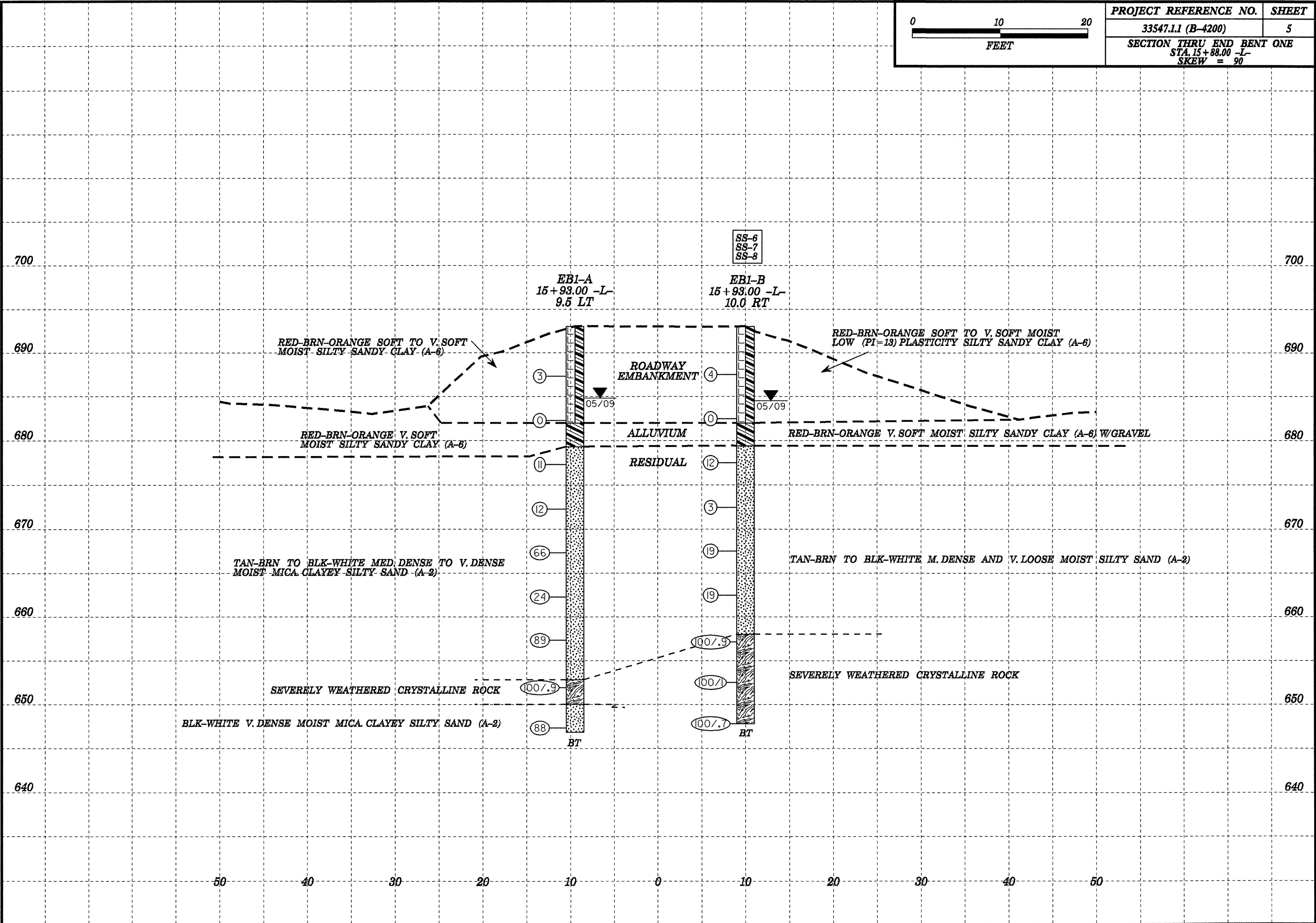
SEVERELY WEATHERED CRYSTALLINE ROCK

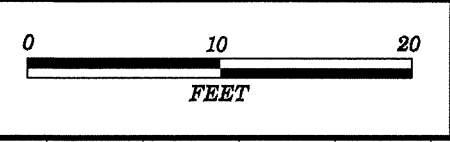
BLK-WHITE V. DENSE MOIST
MICA CLAYEY SILTY SAND (A-2)

BT

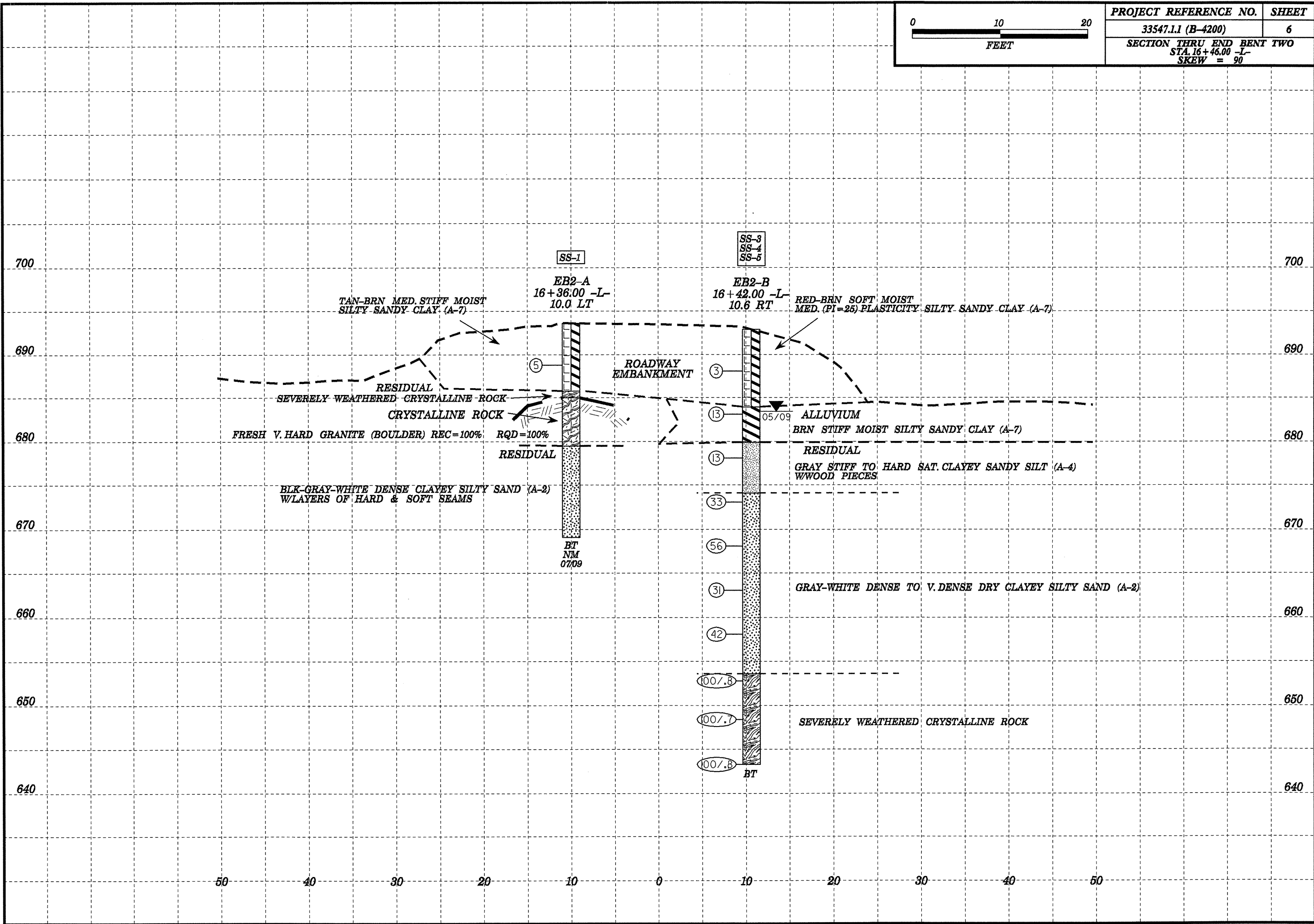


| | |
|---------------------------|-------|
| PROJECT REFERENCE NO. | SHEET |
| 33547.1.1 (B-4200) | 5 |
| SECTION THRU END BENT ONE | |
| STA. 15+88.00 -L- | |
| SKEW = 90 | |

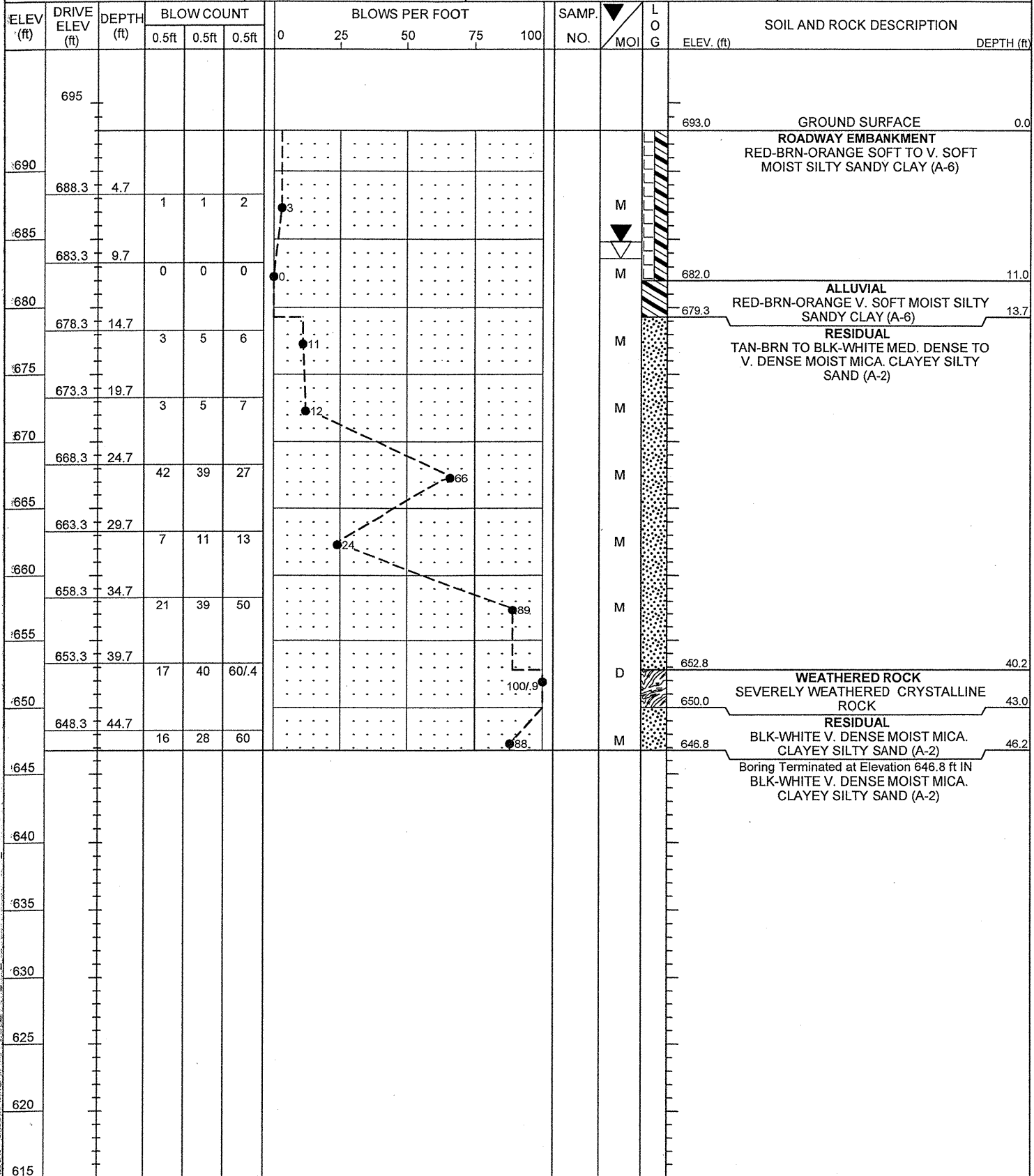




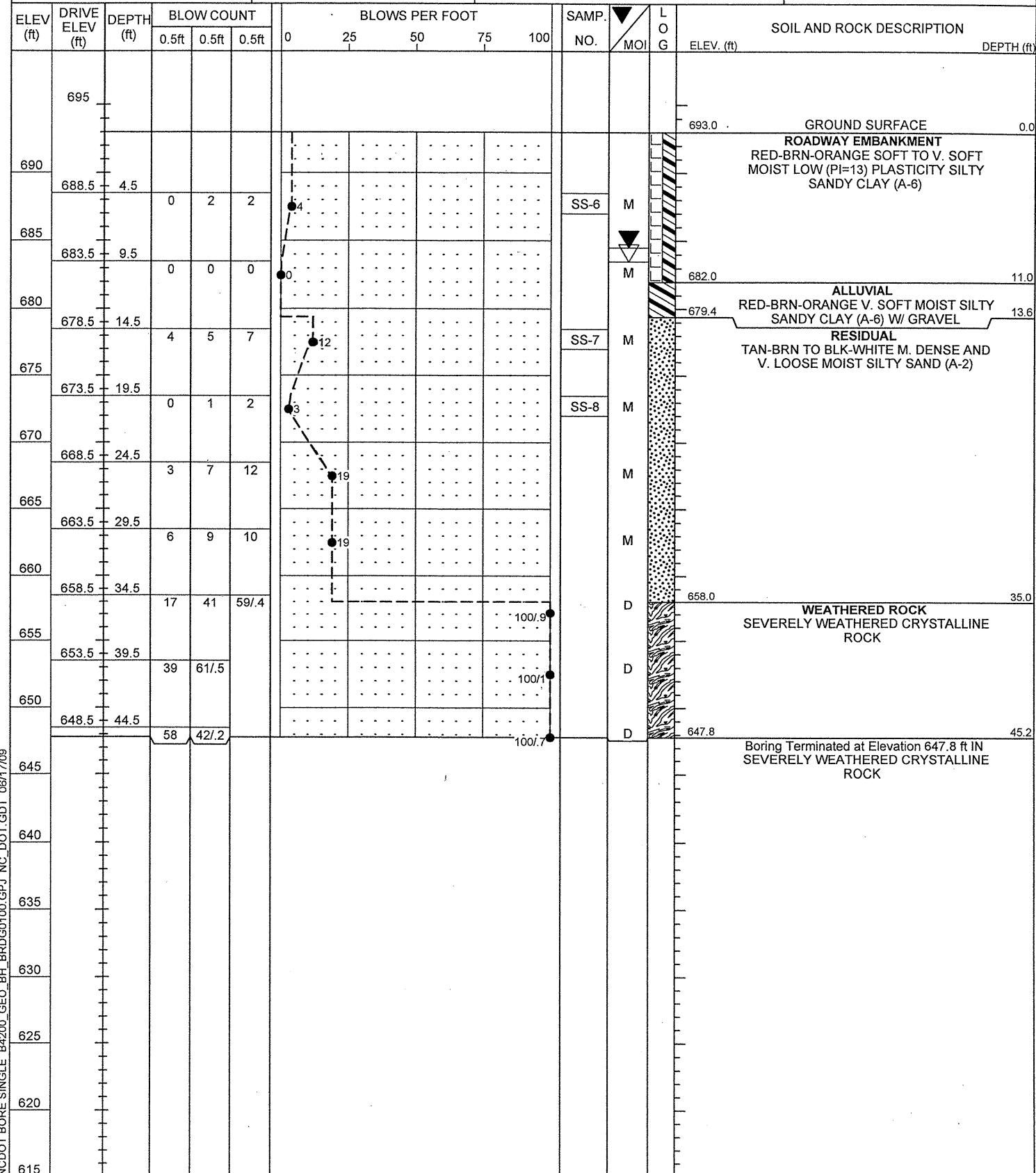
| | |
|---------------------------|-------|
| PROJECT REFERENCE NO. | SHEET |
| 33547.1.1 (B-4200) | 6 |
| SECTION THRU END BENT TWO | |
| STA. 16+46.00 -L- | |
| SKEW = 90 | |



| | | | |
|--|-------------------------------|-------------------------|---------------------------|
| PROJECT NO. 33547.1.1 | ID. B-4200 | COUNTY MECKLENBURG | GEOLOGIST Stickney, J. K. |
| SITE DESCRIPTION BRIDGE #100 ON SR 2120 OVER GAR CREEK | | | GROUND WTR (ft) |
| BORING NO. EB1-A | STATION 15+93 | OFFSET 10ft LT | ALIGNMENT -L- |
| COLLAR ELEV. 693.0 ft | TOTAL DEPTH 46.2 ft | NORTHING 593,126 | EASTING 1,437,721 |
| DRILL MACHINE CME-550X | DRILL METHOD NW Casing w/ SPT | HAMMER TYPE Automatic | |
| START DATE 05/06/09 | COMP. DATE 05/06/09 | SURFACE WATER DEPTH N/A | DEPTH TO ROCK N/A |



| | | | |
|--|-------------------------------|-------------------------|---------------------------|
| PROJECT NO. 33547.1.1 | ID. B-4200 | COUNTY MECKLENBURG | GEOLOGIST Stickney, J. K. |
| SITE DESCRIPTION BRIDGE #100 ON SR 2120 OVER GAR CREEK | | | GROUND WTR (ft) |
| BORING NO. EB1-B | STATION 15+93 | OFFSET 10ft RT | ALIGNMENT -L- |
| COLLAR ELEV. 693.0 ft | TOTAL DEPTH 45.2 ft | NORTHING 593,131 | EASTING 1,437,740 |
| DRILL MACHINE CME-550X | DRILL METHOD NW Casing w/ SPT | HAMMER TYPE Automatic | |
| START DATE 05/06/09 | COMP. DATE 05/06/09 | SURFACE WATER DEPTH N/A | DEPTH TO ROCK N/A |



NCDOT BORE SINGLE B4200_GEO_BH_BRDGG0100.GPJ NC_DOT_GDT 06/17/09

NCDOT BORE SINGLE B4200_GEO_BH_BRDGG0100.GPJ NC_DOT_GDT 06/17/09

| | | | |
|--|------------------------------------|-------------------------|---------------------------|
| PROJECT NO. 33547.1.1 | ID. B-4200 | COUNTY MECKLENBURG | GEOLOGIST Stickney, J. K. |
| SITE DESCRIPTION BRIDGE #100 ON SR 2120 OVER GAR CREEK | | | GROUND WTR (ft) |
| BORING NO. EB2-A | STATION 16+36 | OFFSET 10ft LT | ALIGNMENT -L- |
| COLLAR ELEV. 693.6 ft | TOTAL DEPTH 24.5 ft | NORTHING 593,169 | EASTING 1,437,711 |
| DRILL MACHINE CME-550X | DRILL METHOD NW Casing w/ SPT Core | HAMMER TYPE Automatic | |
| START DATE 07/02/09 | COMP. DATE 07/02/09 | SURFACE WATER DEPTH N/A | DEPTH TO ROCK 8.6 ft |

| ELEV (ft) | DRIVE ELEV (ft) | DEPTH (ft) | BLOW COUNT | | | BLOWS PER FOOT | | | | | SAMP. NO. | LOG | SOIL AND ROCK DESCRIPTION | DEPTH (ft) |
|-----------|-----------------|------------|------------|-------|-------|----------------|----|----|----|-----|-----------|-----|---|------------|
| | | | 0.5ft | 0.5ft | 0.5ft | 0 | 25 | 50 | 75 | 100 | | | | |
| 695 | | | | | | | | | | | | | GROUND SURFACE | 0.0 |
| 690 | 689.8 | 3.8 | 1 | 2 | 3 | | | | | | SS-1 | M | ROADWAY EMBANKMENT TAN-BRN MED. STIFF MOIST SILTY SANDY CLAY (A-7) | |
| 685 | | | | | | | | | | | | | WEATHERED ROCK SEVERELY WEATHERED CRYSTALLINE ROCK | 7.8 |
| 680 | | | | | | | | | | | | | CRYSTALLINE ROCK FRESH V. HARD GRANITE (BOULDER) REC=100% RQD=100% | 14.1 |
| 675 | | | | | | | | | | | | | RESIDUAL BLK-GRAY-WHITE DENSE CLAYEY SILTY SAND (A-2) W/ LAYERS OF HARD & SOFT SEAMS | |
| 670 | | | | | | | | | | | | | | |
| 665 | | | | | | | | | | | | | | |
| 660 | | | | | | | | | | | | | | |
| 655 | | | | | | | | | | | | | | |
| 650 | | | | | | | | | | | | | | |
| 645 | | | | | | | | | | | | | | |
| 640 | | | | | | | | | | | | | | |
| 635 | | | | | | | | | | | | | | |
| 630 | | | | | | | | | | | | | | |
| 625 | | | | | | | | | | | | | | |
| 620 | | | | | | | | | | | | | | |
| 615 | | | | | | | | | | | | | | |

| | | | |
|--|--------------------------|-------------------------|---------------------------|
| PROJECT NO. 33547.1.1 | ID. B-4200 | COUNTY MECKLENBURG | GEOLOGIST Stickney, J. K. |
| SITE DESCRIPTION BRIDGE #100 ON SR 2120 OVER GAR CREEK | | | GROUND WTR (ft) |
| BORING NO. EB2-B | STATION 16+42 | OFFSET 11ft RT | ALIGNMENT -L- |
| COLLAR ELEV. 692.9 ft | TOTAL DEPTH 49.6 ft | NORTHING 593,178 | EASTING 1,437,730 |
| DRILL MACHINE CME-550X | DRILL METHOD H.S. Augers | HAMMER TYPE Automatic | |
| START DATE 05/05/09 | COMP. DATE 05/05/09 | SURFACE WATER DEPTH N/A | DEPTH TO ROCK N/A |

| ELEV (ft) | DRIVE ELEV (ft) | DEPTH (ft) | BLOW COUNT | | | BLOWS PER FOOT | | | | | SAMP. NO. | LOG | SOIL AND ROCK DESCRIPTION | DEPTH (ft) |
|-----------|-----------------|------------|------------|-------|-------|----------------|----|----|----|-----|-----------|------|--|------------|
| | | | 0.5ft | 0.5ft | 0.5ft | 0 | 25 | 50 | 75 | 100 | | | | |
| 695 | | | | | | | | | | | | | GROUND SURFACE | 0.0 |
| 690 | 689.1 | 3.8 | 0 | 1 | 2 | | | | | | SS-3 | M | ROADWAY EMBANKMENT RED-BRN SOFT MOIST MED. (PI=25) PLASTICITY SILTY SANDY CLAY (A-7) | |
| 685 | 684.1 | 8.8 | 2 | 5 | 8 | | | | | | | | ALLUVIAL BRN STIFF MOIST SILTY SANDY CLAY (A-7) | 9.0 |
| 680 | 679.1 | 13.8 | 8 | 7 | 6 | | | | | | S-4 | Sat. | RESIDUAL GRAY STIFF TO HARD SAT. CLAYEY SANDY SILT (A-4) W/ WOOD PIECES | 13.0 |
| 675 | 674.1 | 18.8 | 10 | 17 | 16 | | | | | | SS-5 | D | RESIDUAL GRAY-WHITE DENSE TO V. DENSE DRY CLAYEY SILTY SAND (A-2) | 18.8 |
| 670 | 669.1 | 23.8 | 30 | 31 | 25 | | | | | | | | | |
| 665 | 664.1 | 28.8 | 15 | 15 | 16 | | | | | | | | | |
| 660 | 659.1 | 33.8 | 11 | 19 | 23 | | | | | | | | | |
| 655 | 654.1 | 38.8 | 21 | 45 | 55/3 | | | | | | | | | |
| 650 | 649.1 | 43.8 | 63 | 37/2 | | | | | | | | | | |
| 645 | 644.1 | 48.8 | 49 | 51/3 | | | | | | | | | | |
| 640 | | | | | | | | | | | | | | |
| 635 | | | | | | | | | | | | | | |
| 630 | | | | | | | | | | | | | | |
| 625 | | | | | | | | | | | | | | |
| 620 | | | | | | | | | | | | | | |
| 615 | | | | | | | | | | | | | | |

NCDOT BORE SINGLE B4200_GEO_BH_BRD0100.GPJ NC_DOT_GDT_07/07/09

NCDOT BORE SINGLE B4200_GEO_BH_BRD0100.GPJ NC_DOT_GDT_06/17/09

TEST RESULTS

PROJECT: 33547.1.1 (B-4200)
 COUNTY: MECKLENBURG
 SITE DESCRIPTION: BRIDGE NO. 100 ON SR 2120 OVER GAR CREEK

SOIL SAMPLE RESULTS

| SAMPLE NO. | OFFSET | STATION | DEPTH INTERVAL | AASHTO CLASS | N | L.L. | P.I. | % BY WEIGHT | | | | % PASSING SIEVES | | | UNIT WT. (d) | VOID RATIO |
|--------------|---------|--------------|----------------|--------------|----|------|------|-------------|---------|------|------|------------------|----|-----|--------------|------------|
| | | | | | | | | C. SAND | F. SAND | SILT | CLAY | 10 | 40 | 200 | | |
| EB1-B | | | | | | | | | | | | | | | | |
| SS-6 | 10.0 RT | 15+93.00 -L- | 5.00-6.00 | A-6(2) | 4 | 35 | 13 | 33.3 | 19.2 | 17.3 | 30.3 | 81 | 62 | 42 | | |
| SS-7 | 10.0 RT | 15+93.00 -L- | 15.00-16.00 | A-2-4(0) | 12 | 32 | NP | 30.7 | 44.8 | 16.4 | 8.1 | 91 | 76 | 29 | | |
| SS-8 | 10.0 RT | 15+93.00 -L- | 20.00-21.00 | A-2-4(0) | 3 | 31 | 2 | 29.1 | 44.6 | 18.3 | 8.1 | 100 | 85 | 34 | | |
| EB2-A | | | | | | | | | | | | | | | | |
| SS-1 | 10.0 LT | 16+36.00 -L- | 4.30-5.30 | A-7-6(11) | 5 | 44 | 24 | 20.8 | 19.8 | 15.0 | 44.4 | 93 | 81 | 59 | | |
| SS-2 | 10.3 LT | 16+41.00 -L- | 9.30-10.30 | A-7-6(13) | 23 | 46 | 21 | 11.3 | 21.6 | 18.7 | 48.4 | 93 | 87 | 67 | | |
| EB2-B | | | | | | | | | | | | | | | | |
| SS-3 | 10.6 RT | 16+42.00 -L- | 4.30-5.30 | A-7-6(11) | 3 | 50 | 25 | 23.4 | 16.5 | 19.7 | 40.4 | 86 | 71 | 55 | | |
| S-4 | 10.6 RT | 16+42.00 -L- | 14.30-15.30 | A-4(0) | - | 31 | 6 | 25.8 | 35.1 | 16.9 | 22.2 | 96 | 83 | 43 | | |
| SS-5 | 10.6 RT | 16+42.00 -L- | 19.30-20.30 | A-2-4(0) | 33 | 25 | NP | 34.9 | 41.6 | 13.4 | 10.1 | 89 | 70 | 27 | | |

ROCK SAMPLE RESULTS

| SAMPLE NO. | OFFSET | STATION | DEPTH INTERVAL | RQD | UNIT WT | Q(MPa) (MPsi) | E(MPa) (MPsi) |
|------------|--------|---------|----------------|-----|---------|---------------|---------------|
|------------|--------|---------|----------------|-----|---------|---------------|---------------|



**FIELD
 SCOUR REPORT**

WBS: 33547.1.1 TIP: B-4200 COUNTY: Mecklenburg

DESCRIPTION(1): Bridge #100 on SR 2120 over Gar Creek

EXISTING BRIDGE

Information from: Field Inspection Microfilm _____ (reel _____ pos: _____)
 Other (explain) _____

Bridge No.: 100 Length: 30' Total Bents: 2 Bents in Channel: 2 Bents in Floodplain: 2
 Foundation Type: Timber Piles w/ timber deck and steel I-beams

EVIDENCE OF SCOUR(2)

Abutments or End Bent Slopes: None observed

Interior Bents: N/A

Channel Bed: None

Channel Bank: None

EXISTING SCOUR PROTECTION

Type(3): None

Extent(4):

Effectiveness(5):

Obstructions(6): Beaver dam downstream has water backed up. Little to no flow.

INSTRUCTIONS

- 1 Describe the specific site's location, including route number and body of water crossed.
- 2 Note scour evidence at existing end bents or abutments (e.g. undermining, sloughing, degradations).
- 3 Note existing scour protection (e.g. rip rap).
- 4 Describe extent of existing scour protection.
- 5 Describe whether or not the scour protection appears to be working.
- 6 Note obstructions such as dams, fallen trees, debris at bents, etc.
- 7 Describe the channel bed material based on observation and/or samples. Include any lab results with report.
- 8 Describe the channel bank material based on observation and/or samples. Include any lab results with report.
- 9 Describe the material covering the banks (e.g. grass, trees, rip rap, none).
- 10 Determine the approximate floodplain width from field observation or a topographic map.
- 11 Describe the material covering the floodplain (e.g. grass, trees, crops).
- 12 Use professional judgement to specify if the stream is degrading, or aggrading.
- 13 Describe potential and direction of the stream to migrate laterally during the bridge's life (approx. 100 years).
- 14 Give the design scour elevation (DSE) expected over the life of the bridge (approx. 100 years). This elevation can be given as a range across the site, or for each bent. Discuss the relationship between the Hydraulics Unit theoretical scour and the DSE. If the DSE is dependent on scour counter measures, explain (e.g. rip rap armoring on slopes). The DSE is based on the erodability of materials, giving consideration to the influence of joints, foliation, bedding characteristics, % core recovery, % RQD, differential weathering, shear strength, observations at existing structures, other tests deemed appropriate, and overall geologic conditions at the site.

DESIGN INFORMATION

Channel Bed Material(7): Sandy silt and silty sand (ref. S-4)

Channel Bank Material(8): Clay and or silt (ref. SS-2 and S-4)

Channel Bank Cover(9): Shrubs, grass, and mature trees

Floodplain Width(10): Appx. 400'

Floodplain Cover(11): Small tress and shrubs

Stream is(12): Aggrading Degrading _____ Undetermined _____

Channel Migration Tendency(13): None

Observations and Other Comments: Debris accumulating due to beaver dam.

DESIGN SCOUR ELEVATIONS(14)

Feet _____ Meters _____

BENTS

| | | | | | | | | | | | | | | | | | | | | |
|-------------------|--|--|--|--|--|--|--|--|--|--|--|--|--|--|--|--|--|--|--|--|
| No interior bents | | | | | | | | | | | | | | | | | | | | |
| | | | | | | | | | | | | | | | | | | | | |
| | | | | | | | | | | | | | | | | | | | | |
| | | | | | | | | | | | | | | | | | | | | |
| | | | | | | | | | | | | | | | | | | | | |

Comparison of DSE to Hydraulics Unit theoretical scour:

SOIL ANALYSIS RESULTS FROM CHANNEL BED AND BANK MATERIAL

| | | | | | | | | | | | | | | | | | | | | |
|-------------|--|--|--|--|--|--|--|--|--|--|--|--|--|--|--|--|--|--|--|--|
| Bed or Bank | | | | | | | | | | | | | | | | | | | | |
| Sample No. | | | | | | | | | | | | | | | | | | | | |
| Retained #4 | | | | | | | | | | | | | | | | | | | | |
| Passed #10 | | | | | | | | | | | | | | | | | | | | |
| Passed #40 | | | | | | | | | | | | | | | | | | | | |
| Passed #200 | | | | | | | | | | | | | | | | | | | | |
| Coarse Sand | | | | | | | | | | | | | | | | | | | | |
| Fine Sand | | | | | | | | | | | | | | | | | | | | |
| Silt | | | | | | | | | | | | | | | | | | | | |
| Clay | | | | | | | | | | | | | | | | | | | | |
| LL | | | | | | | | | | | | | | | | | | | | |
| PI | | | | | | | | | | | | | | | | | | | | |
| AASHTO | | | | | | | | | | | | | | | | | | | | |
| Station | | | | | | | | | | | | | | | | | | | | |
| Offset | | | | | | | | | | | | | | | | | | | | |
| Depth | | | | | | | | | | | | | | | | | | | | |

See Sheet # 9 for "Soil Test Results"

Reported by: *JES* JKS / JEB

Date: 7/1/2009